



REPÚBLICA DE MOÇAMBIQUE
MINISTÉRIO PARA A COORDENAÇÃO DA ACCÃO AMBIENTAL
DIRECÇÃO NACIONAL DE AVALIAÇÃO DO IMPACTO AMBIENTAL

Lista de consultores registados

N. Nome INDIVIDUAL	Provincia	Localizacao	Tel./Cel	Fax	E-mail	Emissao	Validade	Obs
1 ABIDA ZENA JAMAL	Maputo	Av. Patrice Lumumba, 899				27.11.2007	27.11.2010	
2 ALBERTO TSAMBA	MAPUTO	RUA DO PARTICULAR D/RA J.A.32 R/C dt				27.10.2007	27.10.2007	
3 ALEXANDRE JOSIAS	SOFALA	RUA DO CAPITAO CUR. N°5 371:				26.11.2004	26.11.2005	
4 ALEXANDRE ALBINO	Nampula	NAMPULA				26.04.2007	26.04.2010	
5 Amad Hassan Abdul Gani	Maputo	Av. Vladimir Lenin, 1156 F2 6 Andar				01.08.2008	01.08.2011	
6 Amadeu C. dos Muchangos	Maputo	Depart. De geologia da UEM				01.08.2008	01.08.2011	
7 Ambrosio Raul da Fonseca	Tele	*				20.12.2004	20.12.2007	
8 Anders Henrik Ellsgard	Maputo	R. Armando Trivane n°1, 1835 1				12.11.2007	12.11.2010	
9 ANICETO DOS MUCHANGOS	Maputo	Rua Alfonso Henriques				30/04/2009	30/04/2012	
10 ARCANGELO PAULO FASSELLA	MAPUTO	UNIVERSIDADE E MONDLANE				15/03/2010	15/03/2013	
11 Argentina Norma Oliveira	Maputo	Av. Mao Tse Tung nr. 57, 3 Andar.				30/04/2009	30/04/2012	
12 ARLITO OLIMPIO SEBASTIAO CUICO	Maputo	Gen Resources Mozambique				15/02/2006	15/02/2009	
13 Augusto Nelo Ferrinho	Maputo	Rua Simoes da Silva n°1, 13 1, andar Esq				26/05/2009	26/05/2012	
14 Bruno Alberto Nhasicale	Maputo	*				26/09/2006	26/09/2009	
15 Candido Antonio Bila	Maputo	*				17.11.2004	17.11.2007	
16 CASTELO MARIO MALULEQUE	MAPUTO	CIDADE SATELITE DA MATOLA				19.12.2007	19.12.2010	
17 CUSTODIO CORREIA VOABIL	Maputo	FREE LANCE -MAPUTO				19.12.2007	19.12.2010	
18 CUSTODIO JUDIAO	C. Delgado	Av. Alberto Lútili 823205660				19.12.2007	19.12.2010	
19 Custotio Judiao	Tele	Tele				28/04/2010	/ / 20	
20 Dinis Antonio Napido	MANICA	DISTRITO DE MANICA				6/11/2008	6/11/2011	
21 DULCIDIO FREDERICO	Maputo	AV. AMILCAR CABRAL				07.08.2004	07.08.2007	
22 Enoque Mendes Vicente	Maputo	Av. Joaquim Chissano n°8, 70 1				16/06/2006	16/06/2009	
23 Ernesto Jorge Macarangue	Maputo	Inhambane				05/08/2008	05/08/2011	
24 Fernando de Silva maquina	Maputo	Nampula				03/05/2010	03/05/2013	
25 Francisco Emidio Candrinho	Maputo	*				27.02.2007	27.02.2010	
26 GAYE TOPSON	Maputo	AV. ZIMBABWE, 1214				03.09.2004	03.09.2007	
27 Gislene Calvet Correa da Silva	Maputo	*				11/11/2006	11/11/2009	
28 Gustavo Sobrinho Dgedge	Maputo	*				11/08/2008	11/08/2011	
29 HASSANE ABECHANDE	Nampula	BAIRRO DE MUHVIRE NH455/9 1				07.02.2008	07.02.2011	
30 Honorato Baquete	Maputo	Av. Maguanguana n°2 1480:				8/2/2007	8/2/2010	

N. Nome	Provincia	Localizacao	Tel./Cel	Fax	E-mail	Emissao	Validade	Obs
31	INACIO TIAGO NHACALE	Maputo	Av. Aol Palme, 785 Esq, Maputo			17.05.2007	17.05.2010	DP
32	JOAO TIMOTEO Manjate KUINA	Maputo	*			23.02.2007	23.02.2010	DP
33	Joaquim Maqueti Langa	Maputo	Av. Julios Nyerere, n.º 1.983 : A			23/01/2007	23/01/2010	DP
34	Jose Chico Franque Mirembo	MAPUTO	AV F S MAGA/IA N.º 5 339 : A			5/1/2008	5/1/20011	DP
35	JOSE DOS SANTOS	C. Deigado	SEM ENDERECO			19.05.2003	19.05.2006	FP
36	JOSE HENRIQUE	Maputo	AV AMED SEKOU TOURE 2864			29.08.2002	29.08.2005	FP
37	Jose Henrique Menete	Maputo	*			22/01/2008	22/01/2011	FP
38	Jose Joao Miguel	Maputo	UEM-Direcáo Científica C P 257			19/05/2010	19/05/2013	DP
39	Jose Luis Carrimo M. Carvela	Maputo	Av. Marinis da Machava			19/05/2003	19/05/2006	FP
40	Jose Manuel F. de Sa Pereira	*	*			27/03/2009	27/03/2012	DP
41	LEONEL LEITE LOPES	INHAMBANE	DISTRITO DE INHASSORO			24/08/2009	24/08/2012	DP
42	LOURENCO SIMAO CHAMBELA	INHAMBANE	SERVICO PROVINCIAL DE G CAD.			04.08.2006	04.08.2009	FP
43	Luciano de Castro	Maputo	*			12/6/2009	12/6/2012	DP
44	Lucio Graça Cesar Augusto	Maputo	*			7/12/2004	7/12/2007	FP
45	Luis dos Santos Namanha	Tete	Bairro de Matundo			27/12/2006	27/12/2009	FP
46	Margarida Maria da Veiga	Maputo	*			24/07/2009	24/07/2012	DP
47	MARIA IMELDA SOUSA	Maputo	RUA COMANDANTE A. CARD. 33/R/C			01.03.2003	01.03.2006	FP
48	MICHAELA COSIJIN	INHAMBANE	DISTRITO DE VILANCULO			21.12.2007	21.12.2010	DP
49	NATALIE BOCKEL	MAPUTO	SEM ENDERECO			09.03.2004	09.03.2007	FP
50	NICOLAU OSCAR MOISES	C. Deigado	SEM ENDERECO			01.08.2008	01.08.2011	DP
51	Nitai hassane Puna	Maputo	R. Resiliencia n.º 3 598 : Dto			15/05/2009	15/05/2011	DP
52	PAULO LOURENCO COREIA	SOFALA	AV SAMORA MACHEL 2123 : 2			23.10.2007	23.10.2010	DP
53	Pedro A.L.Lampe-o Cardoso	MAPUTO	Av. 24 de Julho 3737 :1 ESQ.			1/6/2008	1/8/2011	DP
54	Pinto Madeira Duarte	Maputo	*			*	*	*
55	PITA RAUL SITO	MAPUTO	I.U.P.FCNM.AV.MOCAMBIQUE N170 :			31.08.2007	31.08.2010	DP
56	QUIRINO APAMANDO	INHAMBANE	SERVICO PROVINCIAL DE G CAD.			09/11/2009	09/11/2012	DP
57	Rafael Correia Barao	Maputo	*			27/03/2009	27/03/2012	DP
58	Rozaque Joao Guambe	Maputo	Tete			6/8/2008	6/8/2011	DP
59	SALLY TOMPSON	MAPUTO	AV MAO TSE TUNG N858 : R/C			03.09.2004	03.09.2007	FP
60	SELECT MUNDLOVO	MAPUTO	AV 24 DE JULHO N797 :1			10.03.2004	10.03.2007	FP
61	Sergio Manuel Tomas de Barros	Maputo	Av. Josina Machel n.º 1417-A/Andar			11/09/2009	11/09/2012	DP
62	Victor Raul	Maputo	Av. Julios Nyerere n84 : R/c			15/05/2009	15/05/2012	DP
EMPRESA								
63	3.J.S. - HORIZON, Mbique, Lda	Nampula	Av. 24 de Julho n1985 :1			06.08.2008	06.08.2011	FP
64	AGEMA, Lda	ZAMBEZIA	RUA PAULO S. K. N81 : C.P. N437 :			03.10.2002	03.10.2005	FP
65	ALEXANDRE AMO CHICATSA	SOFALA	RUA MARQUES SA N.º 5 714:			01.10.2002	01.10.2005	FP
66	ARCUS CONSULTORES	MAPUTO	AV 25 DE SETEMBRO N1676:			25.04.2002	25.04.2005	FP
67	AUDITORES & CONSULTORES LDA	Zambezia	AV EDUARDO MONDLHANE, N1369 :			13/06/2007	13/06/2010	DP
68	AUSTRAL CONSULTORIA Lda	MAPUTO	CAIXA POSTAL N2242:			29.08.2002	29.08.2005	FP

N. Nome	Provincia	Localizacao	Tel./Cel	Fax	E-mail	Emissao	Validade	Obs
69 AUSTRALCOWI, LDA	Maputo	AV ZEDEQUIAS MANGANHELAS 3-11 Andares				12.11.2007	12.11.2011	DP
70 BERGMAN INGEROP	MAPUTO	RUA DE CHINDE N57- C/P 3241				25.07.2002	25.07.2005	FP
71 BIOGLOBAL	Maputo	RUA FERNAO MAGALHAES N°098 ;				18.06.2007	18.06.2010	DP
72 Carthal	Maputo	**				24/02/2010	24/02/2013	DP
73 CBE - Southern Africa, Lda	Maputo	Rua Da Sa n11 ,114 ,114 , and ar				05/11/2008	05/11/2011	DP
74 ICEPEC.Lda	MAPUTO	RUA CORREIA DE BRITO N1612 ;				15/05/2009	15/05/2012	DP
75 CEPLAGA	SOFALA	RUA G.A CASTILHO PROM 12				30/04/2009	30/04/2012	DP
76 CESCO, C1 Mocambique	Maputo	Av. Amicar Cabral r853;				22/03/2010	22/04/2013	DP
77 CODEMO	MAPUTO	AV/MARTIRES DA MACHAVA				20.06.2006	20.06.2009	FP
78 Consaft, Lda	Maputo	R/Ammando Tivane, R/C n1111;				05/11/2008	05/11/2011	FP
79 CONSENG	Maputo	Av. Kwame Nkrumah n460 ;				22/07/2009	22/07/2012	DP
80 Consorcio Cobal/ Impacto, lda	Maputo	Av. Martires da Machva n98 ;				21/07/2009	21/07/2012	FP
81 CONSULMAR Lda	MAPUTO	RUA JOAQUIM LAPA 22 4C P. N312 ;				21.03.2003	21.03.2006	FP
82 CONSULTEC	MAPUTO	RUA ANTONIO J. DE ALMEIDA N271;				03/05/2010	03/05/2013	DP
83 CONSULTEC	Maputo	RUA, TEN GEN OSWALDO TAZAMA, 169				03.05.2010	03.05.2013	DP
84 Consultec e ERM	Nampula	*				11/06/2006	11/06/2009	FP
85 Consultores Associados, Lda	Maputo	*				08/05/2007	08/05/2010	DP
86 Consultrec e Diagonal Urbana	Maputo	*				11/11/2006	11/01/2009	FP
87 D&D Ambiente, Consultoria	Maputo	*				27/07/2009	27/07/2012	DP
88 DELOITTE & TOUCH MOC.Lda	Maputo	AV Z.MANGANHELA N4 95-ANDAR				06.08.2002	06.08.2005	FP
89 DORA CONSULTORES LDA	Maputo	Av. Samora Machel, N°4 30 ; Andar Maputo				11/2/2009	11/2/2012	DP
90 Ecoplain Lda, Consultores	Maputo	*				19/06/2007	19/06/2010	DP
91 ECESI - Estudos Consultoria, Sondagem e	Maputo	Av. PATRICE LULUMBA N357 ;				17/04/2009	17/04/2012	DP
92 Enco- Consultoria	Maputo	Rua Almeida Garrett n34 ; - coop				08/04/2009	08/04/2012	DP
93 Enviro-Gestao Amb e Servicos	Maputo	Bairro Ferroviario Q 63, n 113				09.09.2008	09.09.2011	DP
94 ERGA - ENERGIAS RENOVAVEIS	Maputo	Maguiana n°2 , 1480 ; f.7				24/03/2010	24/03/2013	DP
95 Febeca Consultoria, Lda	Zambezia	Av. 25 de Junho - Quelimane				31/03/2009	31/03/2012	DP
96 GEC.Lda	Sorlaia	AV SAMORA MACHEL 2123 12				03.10.2002	03.10.2004	FP
97 GEOMBIENTE, Lda	Maputo	Av. HO CHI MIN Nr 386 r/c				06.02.2008	06.02.2011	FP
98 GEOTEC	Maputo	Av. Julios Nyerere / Campus da UEM				22/03/2010	22/03/2013	DP
99 GMSG	Maputo	R. Joao de Querros n18 ; R/C				24/02/2010	24/02/2013	DP
100 Golder Associados Moc. Lda	Maputo	Av. 24 de Julho n4 370 ; Esq.				26/05/2009	26/05/2012	DP
101 IDEC, MOCAMBIQUE, LDA	Maputo	Av. 24 de Julho n°1 1638 Andar				26/11/2008	26/11/2011	DP
102 IMD MINERAS E SERVICOS	Maputo	AV Z.MANGANHELA N1 591/APAR13				7.12.2007	7.12.2007	FP
103 IMPACTO, Lda	Maputo	AV/MARTIRES DA MACHAVA N968 ;				15/12/2008	15/12/2011	DP
104 KACHELA LDA	Maputo	RUA MAJOR COUTO, 2017				11.01.2006	11.01.2009	FP
105 KNIGHT P. CONSULTING	Maputo	Av. Armando Tivane, 1961 - Map				19/12/2006	19/12/2009	FP
106 Mozafricon - Engenharia Cons.	Maputo	*				15/05/2009	15/05/2012	DP
107 Raquel Correia Barao	Maputo	*				17.04.2010	17.04.2010	DP
108 RMS - Consultores, Lda	Maputo	manires de moeda n13 399;				12/8/2008	12/8/2011	DP

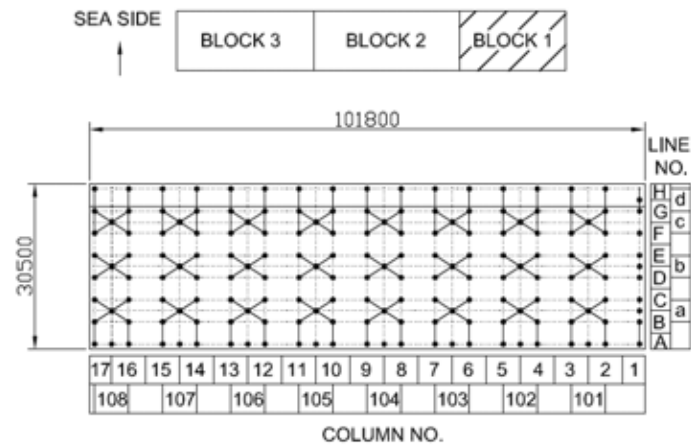
N. Nome	Provincia	Localizacao	Tel./Cel	Fax	E-mail	Emissao	Validade	Obs
09)RURAL CONSULTORES Lda	MAPUTO	RUA DE SE N°114 ; H.ROVUMA 1 A.				23.08.2004	23.08.2007	FP
10)Sal consultores	*					17/05/2005	17/05/2008	FP
11) SCOOT WILSON MOZAMBIQUE	MAPUTO	AV 25 DE SETEMBRO-1123.8E				24.04.2002	24.04.2005	FP
12)SEED	MAPUTO	AV PATRICE LUMUMBA N°78 ;				12.02.2008	12.02.2011	DP
13)SGS - Moc	Maputo	Rua de Bagamoiro n°1 322/andar				26/04/2006	26/04/2009	FP
14)SISTELMO AMBIENTE	Niassa	RITOHAMBA,405 C.P. 655				2002	2005	FP
15)Sociedade Crachas Consultoria, LDA	*					07/10/2009	07/10/2012	DP
16)SOCIEDADE KUKULA, SARL	MAPUTO	AV FER DE MAGALHANGE N°1 34 ;				20.12.2002	20.12.2005	FP
17)Solomen, Lda	Maputo	Rua Comand. Joao Belo, 189 - Maputo				14/08/2008	14/08/2011	DP
18)SOLUCOES AMBIENTAIS	MAPUTO	UNIVERSIDADE E.MONDLANE				05.09.2003	05.09.2006	FP
19)SPACE - Consultoria e Projectos, Lda	Maputo	Av. 25 de Setembro n°11 ,1123 ; D				09/11/2009	09/11/2012	DP
20)SUSTEM,Lda	MAPUTO	AV MAO TSE TUNG N886 ;				01.10.2002	01.10.2005	FP
21)Techniplan S.P.A	Maputo	Av. Zedequias Manganhela, n°1 ,591 ; flat - 152,133				17/12/2008	17/12/2012	DP
22)TECNICA ENGINHEIROS,Lda	MAPUTO	AV 25 DE SETEMBRO N2526;				20/03/2008	20/03/2011	DP
23)V3-CONSULTORES	MAPUTO	AV AMED SEKOU TOURE 361				08.07.2003	08.07.2006	FP
24)VERDE AZUL	MAPUTO	RUA DE CASTANHEDA 110				14.08.2003	14.08.2006	FP
25)We Consult, Lda	Maputo	Av. Kwame Nkrumah N°1 ,1013 ; Andar				17/12/2009	17/12/2012	DP

Legenda:

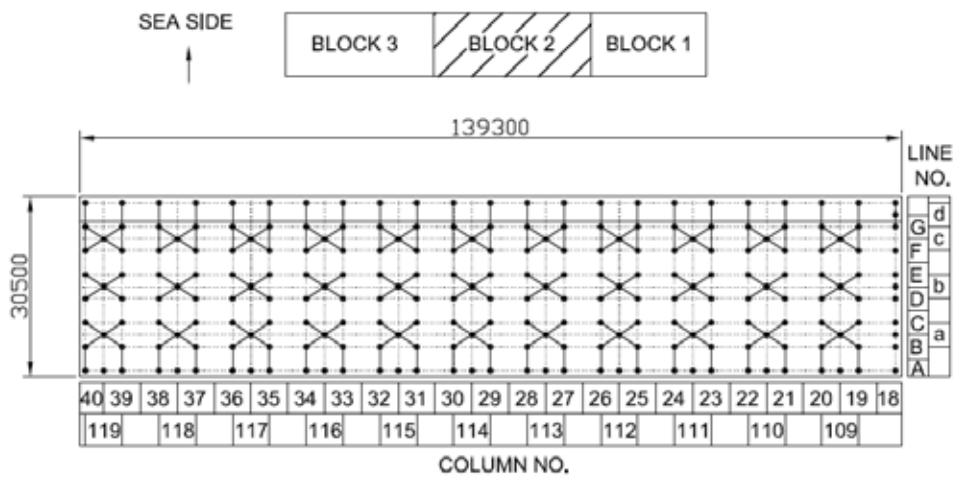
- * -Sem localizacao
- 0 -Sem Telefone e/ou Fax
- DP-Dentro do Prazo
- FP-Fora do Prazo

Appendix-6

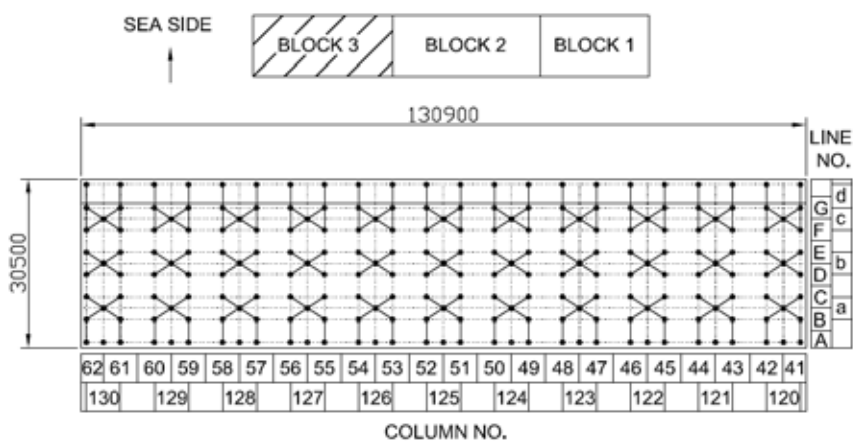
Photos of Piles and Props under Container Terminal



LOCATION OF PILES IN CONTAINER TERMINAL BLOCK 1



LOCATION OF PILES IN CONTAINER TERMINAL BLOCK 2



LOCATION OF PILES IN CONTAINER TERMINAL BLOCK 3

General layout of piles in Container Terminal

A 3.1 Block 1



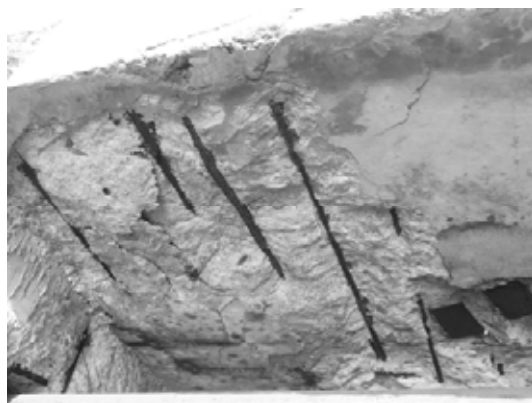
Block 1
Pile 1A and Wall



Block 1
Pile 1A and Slab



Block 1
Pile 1A



Block 1
Slab nearby Pile 1A



Block 1
Wall nearby Pile 1A



Block 1
Pile 1A



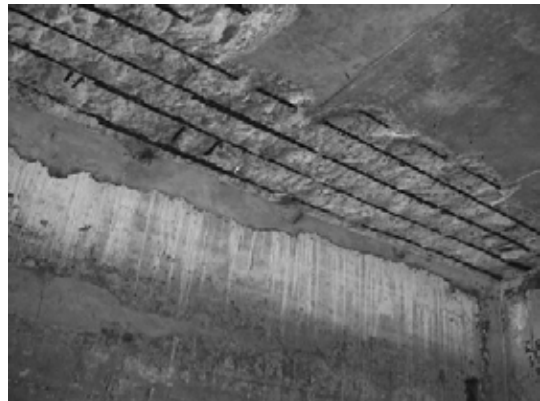
Block 1
Slab bet. Pile 1A& 2A-1



Block 1
Slab bet. Pile 1A& 2A-2



Block 1
Slab bet. Pile 1A& 2A-3



Block 1
Slab bet. Pile 1A& 2A-4



Block 1
Slab bet. Pile 1A& 2A-5



Block 1
Slab bet. Pile 1A& 2A-6



Block 1
Wall bet. Pile 1A & 2A-1



Block 1
Wall bet. Pile 1A & 2A-2



Block 1
Pile 1B-1



Block 1
Pile 1B-2



Block 1
Slab nearby Pile 1B-1



Block 1
Slab nearby Pile 1B-2



Block 1
Pile 1B & 1a



Block 1
Pile 1B ~ 1C



Block 1
Pile 1b ~ 1E



Block 1
Slab bet. Pile 1B & 2B



Block 1
Slab end-1



Block 1
Pile 1C



Block 1
Pile 1D



Block 1
Pile 1F ~ 1d



Block 1
Pile 2A



Block 1
Pile 2A ~ 2B-1



Block 1
Pile 2A ~ 2B-2



Block 1
Pile 2B-1



Block 1
Pile 2B-2



Block 1
Beam bet. Pile 2C & 101a



Block 1
Pile 2D-1



Block 1
Pile 2D-2



Block 1
Pile 2E



Block 1
Pile 2E ~ 2F



Block 1
Pile 2F



Block 1
Pile 3C



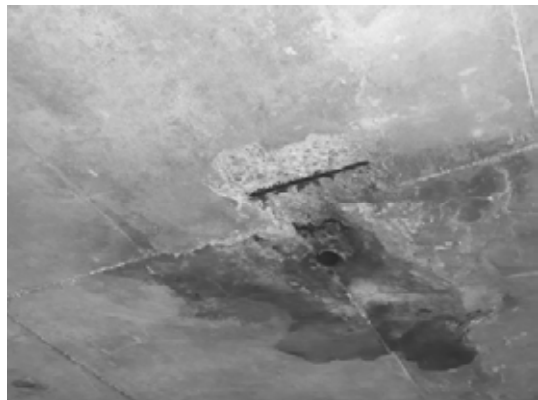
Block 1
Pile 3D-1



Block 1
Pile 3D-2



Block 1
Pile 3D-3



Block 1
Slab bet. 3D & 4D



Block 1
Pile 3E



Block 1
Pile 3G



Block 1
Pile 4A ~ 4B



Block 1
Pile 4B



Block 1
Pile 4C



Block 1
Pile 4D-1



Block 1
Pile 4D-2



Block 1
Pile 4E-1



Block 1
Pile 4E-2



Block 1
Pile 4E-3



Block 1
Pile 4F ~ 4G



Block 1
Slab bet. Pile 4F & 5F



Block 1
Pile 4G



Block 1
Pile 5B



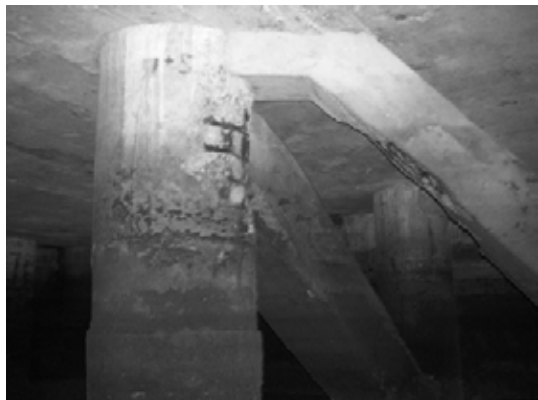
Block 1
Pile 5D-1



Block 1
Pile 5D-2



Block 1
Pile 5E



Block 1
Pile 5F



Block 1
Pile 5G-1



Block 1
Pile 5G-2



Block 1
Wall bet. Pile 5G & 6G



Block 1
Pile 6A ~ 6B-1



Block 1
Pile 6A ~ 6B-2



Block 1
Pile 6C



Block 1
Beam bet. 6C & 103a



Block 1
Pile 6D-1



Block 1
Pile 6D-2



Block 1
Pile 6E



Block 1
Pile 6F



Block 1
Pile 6F ~ 6G



Block 1
Pile 6G



Block 1
Pile 7C



Block 1
Pile 7D



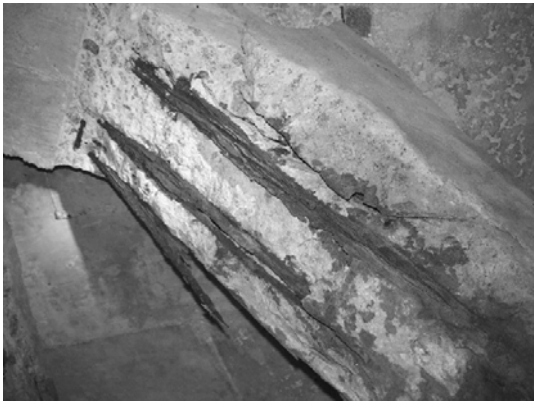
Block 1
Pile 7E-1



Block 1
Pile 7E-2



Block 1
Brace bet. Pile 7F & 7G



Block 1
Beam bet. Pile 7F & 103a



Block 1
Pile 7G



Block 1
Pile 8D



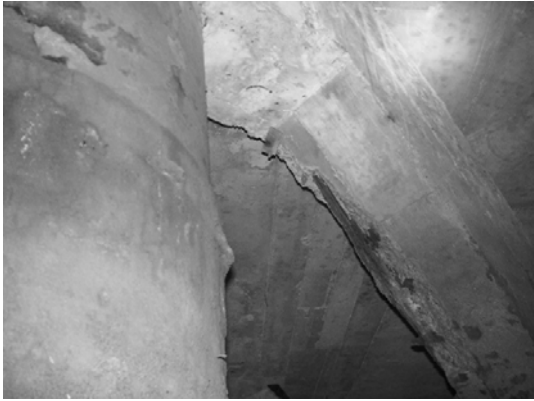
Block 1
Pile 8E-1



Block 1
Pile 8E-2



Block 1
Pile 8E-3



Block 1
Beam bet. Pile 8E & 104b



Block 1
Pile 8F-1



Block 1
Pile 8F-2



Block 1
Pile 8F-3



Block 1
Pile 8G



Block 1
Pile 9B



Block 1
Pile 9C-1



Block 1
Pile 9C-2



Block 1
Pile 9D-1



Block 1
Pile 9D-2



Block 1
Pile 9D-3



Block 1
Pile 9E-1



Block 1
Pile 9E-2



Block 1
Pile 9F



Block 1
Pile 10B



Block 1
Pile 10C



Block 1
Pile 10E-1



Block 1
Pile 10E-2



Block 1
Beam bet. Pile 10E & 105b



Block 1
Pile 10F-1



Block 1
Pile 10F-2



Block 1
Pile 10G



Block 1
Pile 11B-1



Block 1
Pile 11B-2



Block 1
Pile 11B-3



Block 1
Pile 11D



Block 1
Pile 11E



Block 1
Pile 11F



Block 1
Wall bet. Pile 11G & 12G-1



Block 1
Wall bet. Pile 11G & 12G-2



Block 1
Pile 12A ~ 12B



Block 1
Pile 12B



Block 1
Pile 12C-1



Block 1
Pile 12C-2



Block 1
Pile 12D-1



Block 1
Pile 12D-2



Block 1
Pile 12E



Block 1
Pile 12F-1



Block 1
Pile 12F-2



Block 1
Pile 12F-3



Block 1
Beam bet. Pile 12F & 106c-1



Block 1
Beam bet. Pile 12F & 106c-2



Block 1
Beam bet. Pile 12F & 106c-3



Block 1
Pile 13B



Block 1
Pile 13C



Block 1
Pile 13D-1



Block 1
Pile 13D-2



Block 1
Pile 13E



Block 1
Pile 13F



Block 1
Beam bet. Pile 13F & 106c



Block 1
Pile 14C-1



Block 1
Pile 14C-2



Block 1
Pile 14D



Block 1
Pile 14E



Block 1
Pile 14F-1



Block 1
Pile 14F-2



Block 1
Pile 15B



Block 1
Pile 15D-1



Block 1
Pile 15D-2



Block 1
Pile 15E-1



Block 1
Pile 15E-2



Block 1
Pile 15F



Block 1
Pile 16C



Block 1
Pile 16D



Block 1
Pile 16E-1



Block 1
Pile 16E-2



Block 1
Pile 16E-3



Block 1
Pile 16F-1



Block 1
Pile 16F-2



Block 1
Pile 17C-1



Block 1
Pile 17C-2



Block 1
Pile 17D-1



Block 1
Pile 17D-2



Block 1
Pile 17E-1



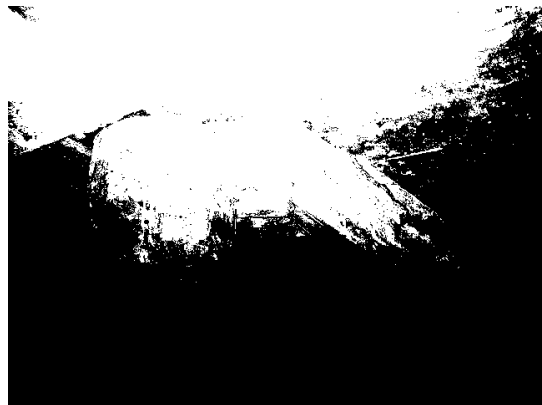
Block 1
Pile 17E-2



Block 1
Pile 17E-3



Block 1
Pile 17F-1



Block 1
Pile 17F-2



Block 1
Pile 17F-3



Block 1
Pile 17G-1



Block 1
Pile 17G-2



Block 1
Pile 101b-1



Block 1
Pile 101b-2



Block 1
Pile 101b-3



Block 1
Pile 101b-4



Block 1
Pile 101c-1



Block 1
Pile 101c-2



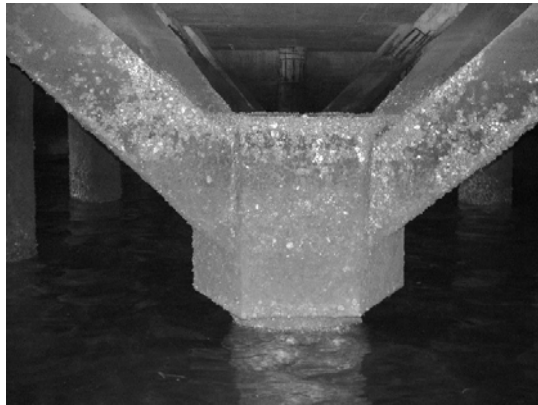
Block 1
Pile 101c-3



Block 1
Pile 102a



Block 1
Pile 102c



Block 1
Pile 103b



Block 1
Pile 103c



Block 1
Pile 104b



Block 1
Pile 106a



Block 1
Pile 106c