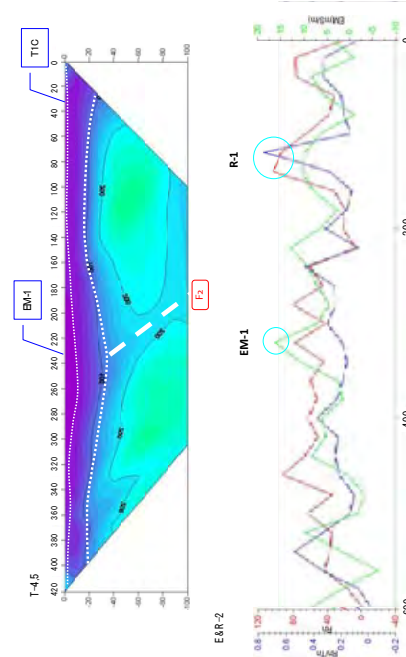
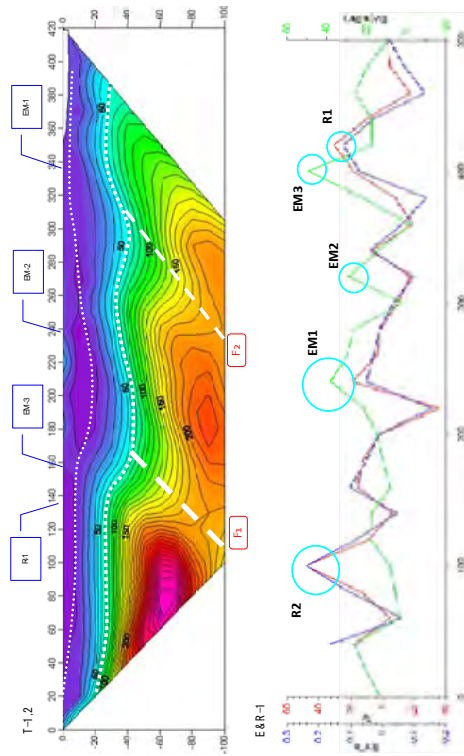


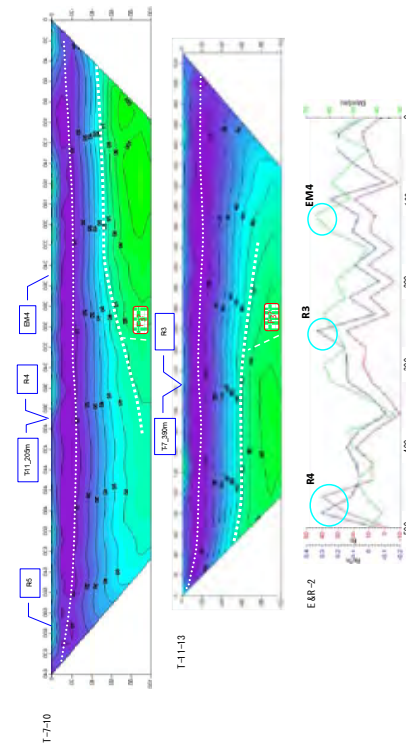
レベル 2: イサングガ村 探査 No.1 (2/2)



レベル 2: ウスングガ村 探査 No.1 (1/2)

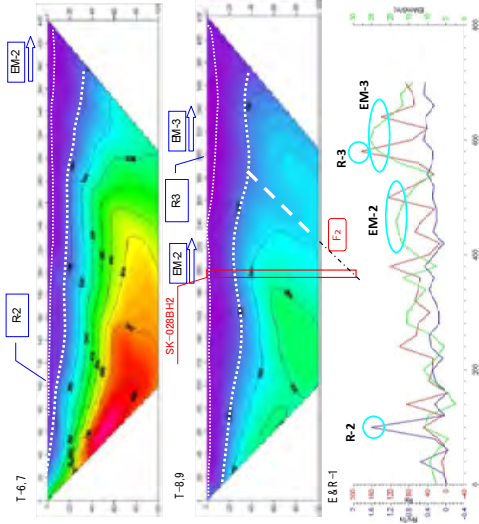


レベル 2: イサングガ村 探査 No.1 (1/2)

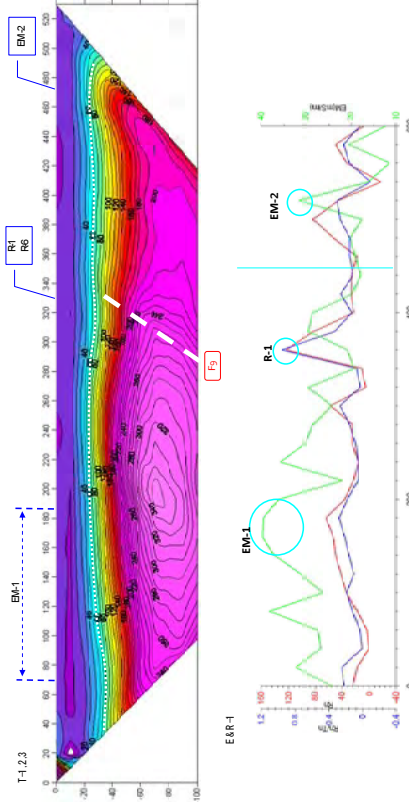


レベル 2: イサングガ村 探査 No.2

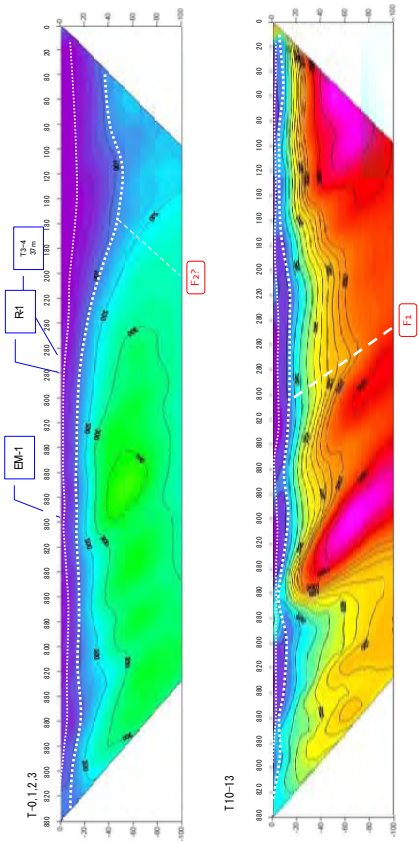
図-2 比抵抗二次元断面図・EMプロファイル・ラドンプロファイル (1/8)



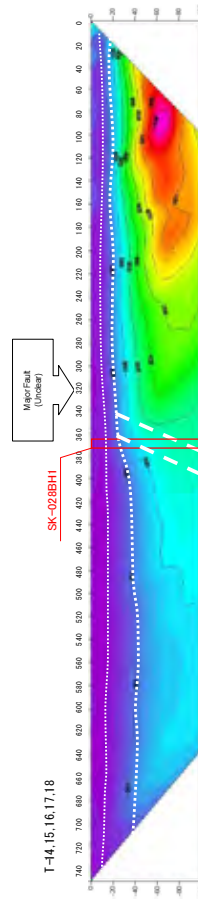
レベル 2: ウスンガ村 探査 No.2



レベル 2: ムポンブウエ村 探査 No.1 (1/3)

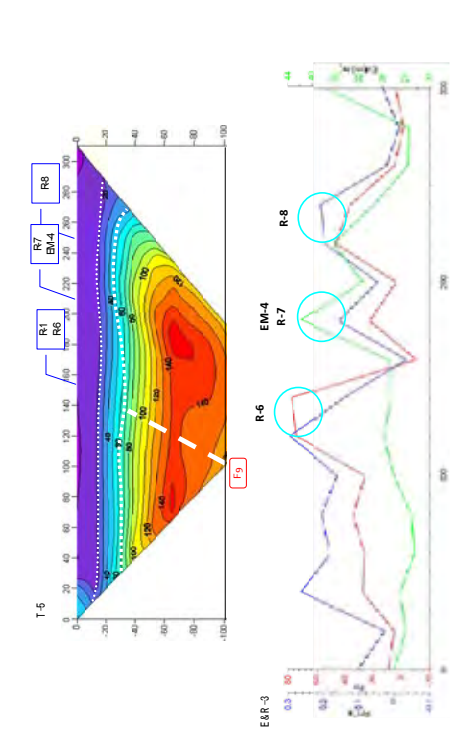


レベル 2: ウスンガ村 探査 No.1 (2/2)



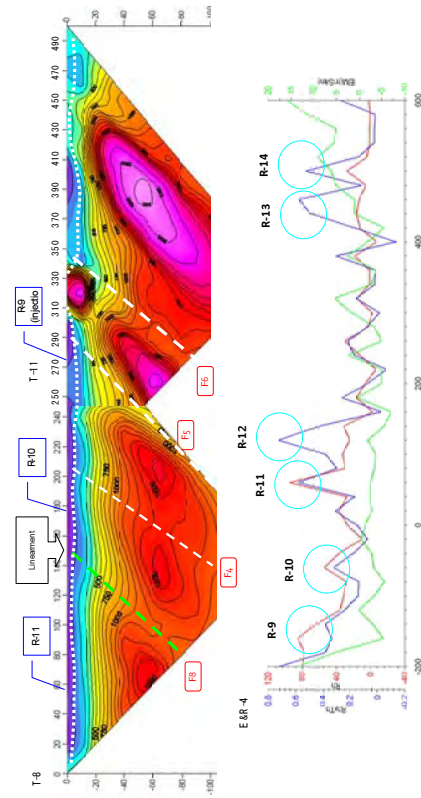
レベル 2: ウスンガ村 探査南西部

図-2 比抵抗二次元断面図・EMプロファイル・ラドンプロファイル (2/8)

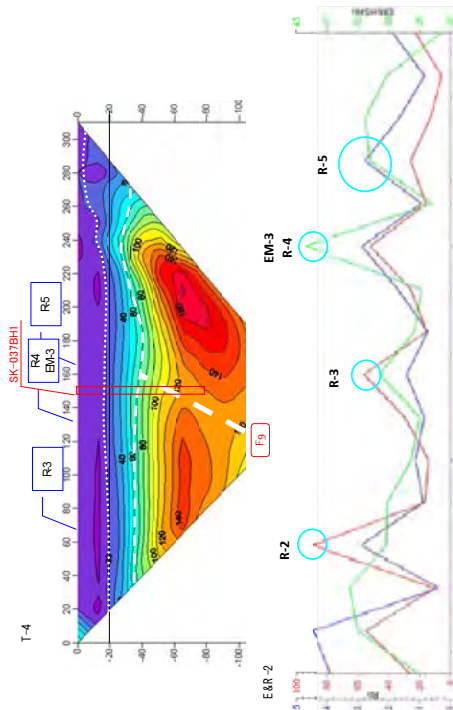


レベル 2: ムポンブウエ村 探査 No.1 (2/3)

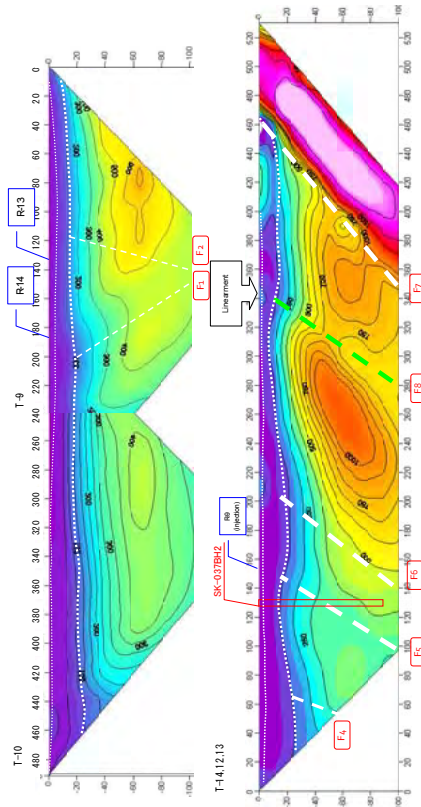
A7-17



レベル 2: ムポンブウエ村 探査 No.2 (1/3)



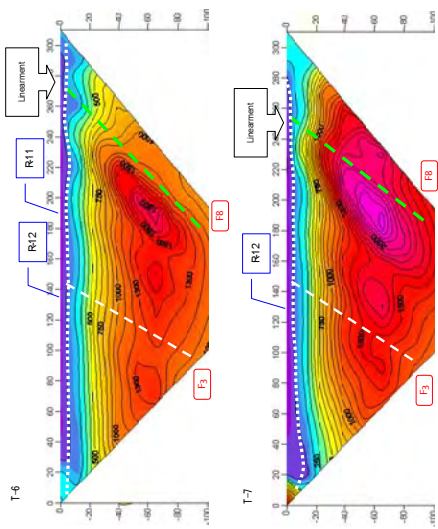
レベル 2: ムポンブウエ村 探査 No.1 (3/3)



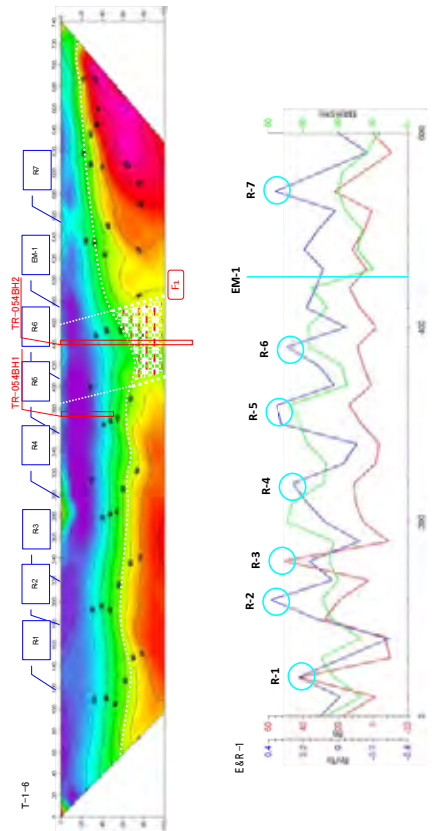
レベル 2: ムポンブウエ村 探査 No.2 (2/3)

図-2 比抵抗二次元断面図・EM プロファイル・ラドンプロファイル (3/8)

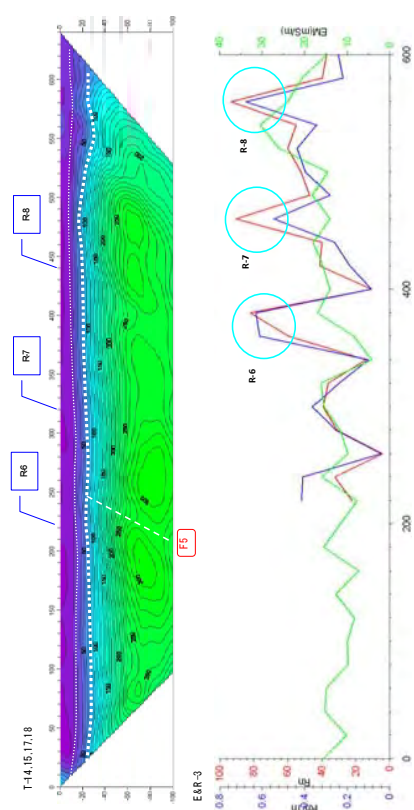




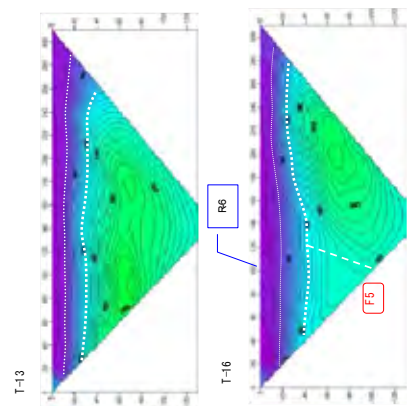
レベル 2: ムポンブウェ村 探査 No.2 (3/3)



レベル 2: ムポンブグリ村 探査 No.1

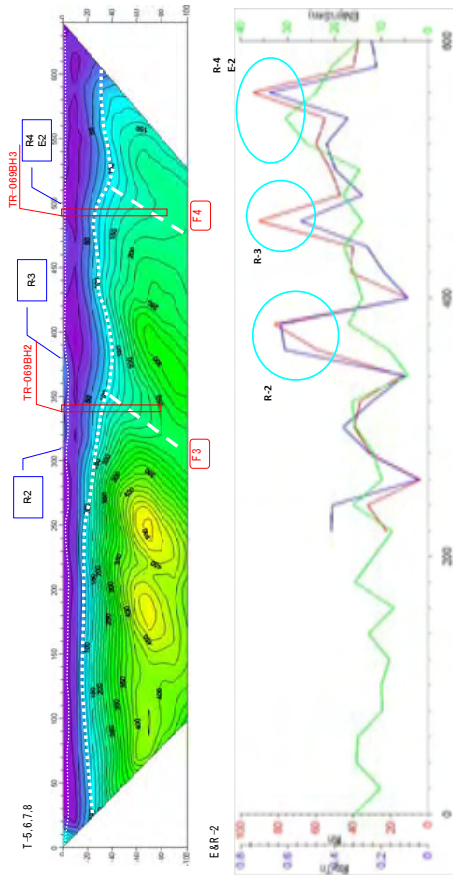


レベル 2: マバママ村 探査 No.1 (1/2)

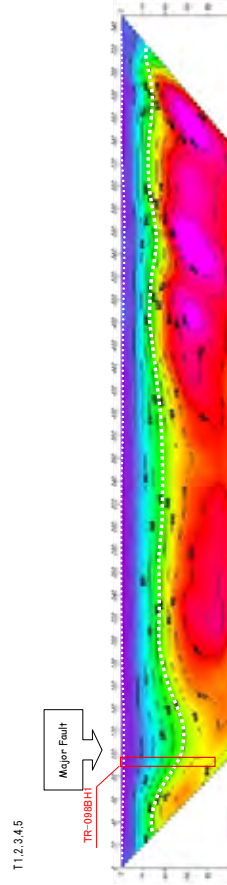


レベル 2: マバママ村 探査 No.1 (2/2)

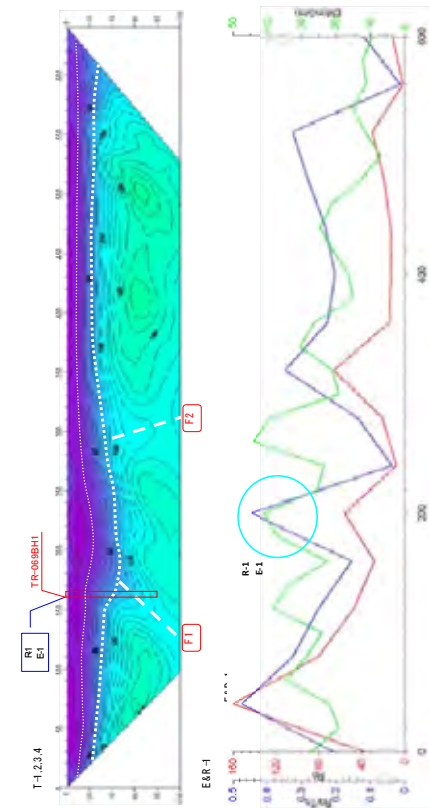
図-2 比抵抗二次元断面図・EM プロファイル・ラドンプロファイル (4/8)



レベル 2: マバマ村 探査 No.3



レベル 2: マバマ村 探査 No.2



レベル 2: マバマ村 探査 No.4

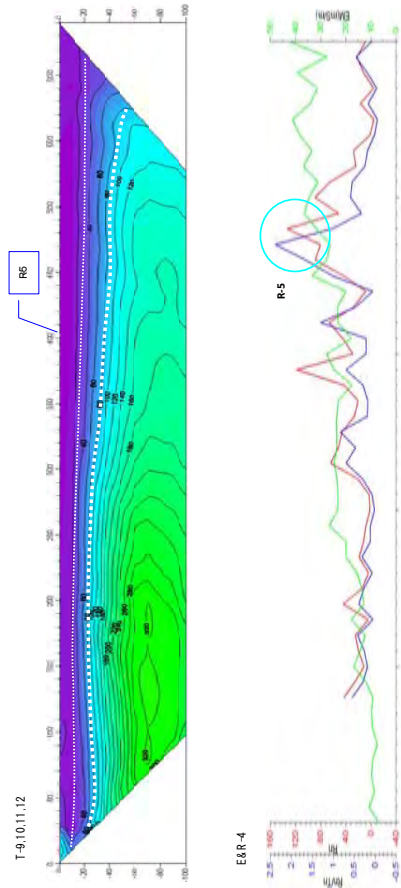
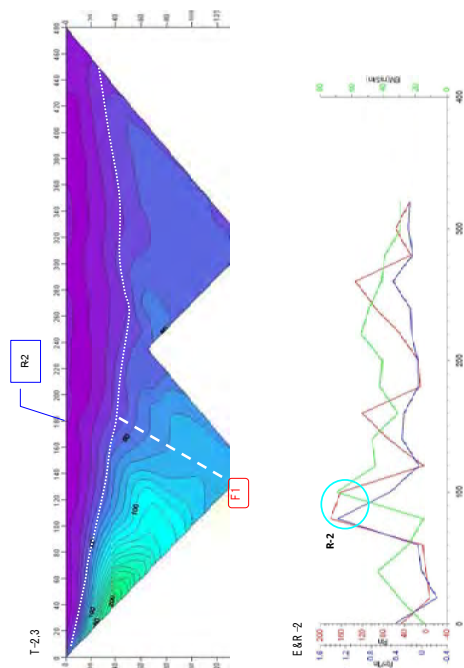
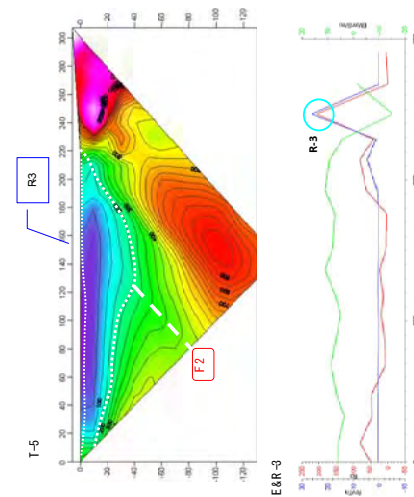


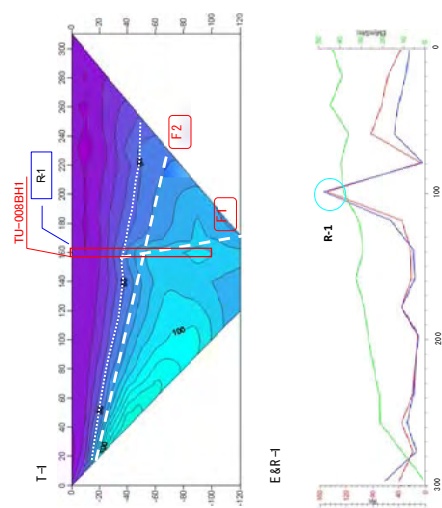
図-2 比抵抗二次元断面図・EMプロファイル・ラドンプロファイル (5/8)



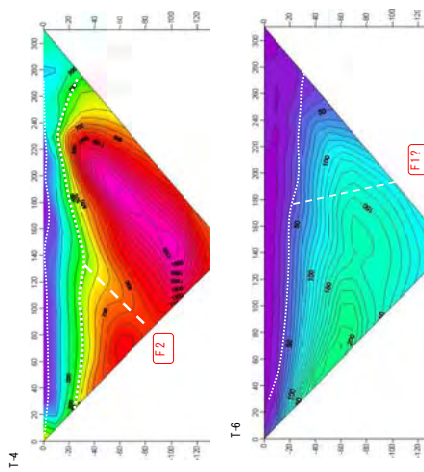
レベル 2: カコラ村 探査 No.2 (2/2)



レベル 2: カコラ村 探査 No.3 (2/2)

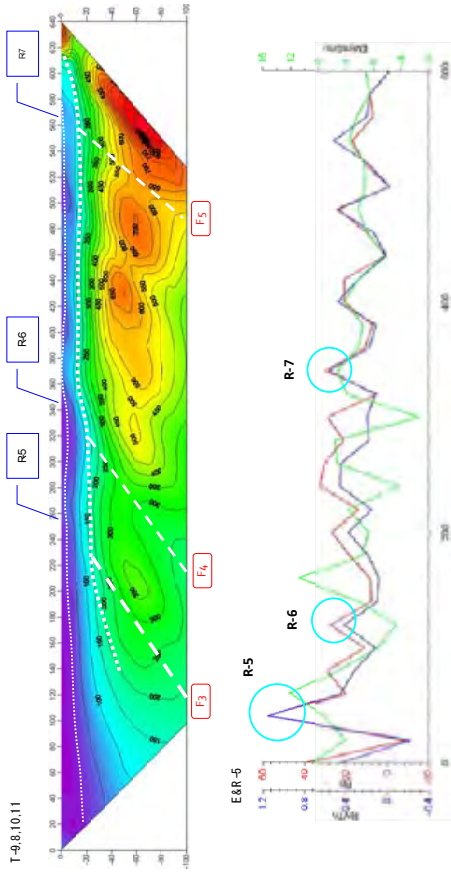


レベル 2: カコラ村 探査 No.2 (1/2)

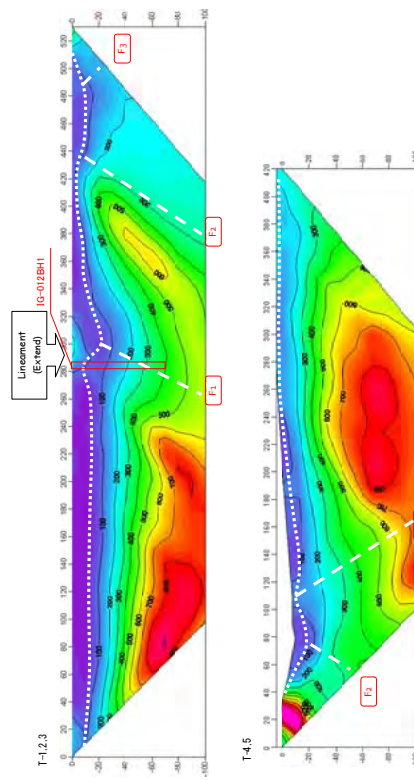


レベル 2: カコラ村 探査 No.2,3 (1/2)

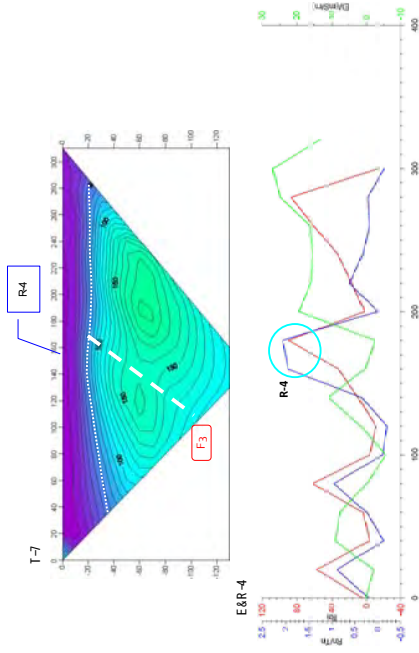
図-2 比抵抗二次元断面図・EMプロファイル・ラドンプロファイル (6/8)



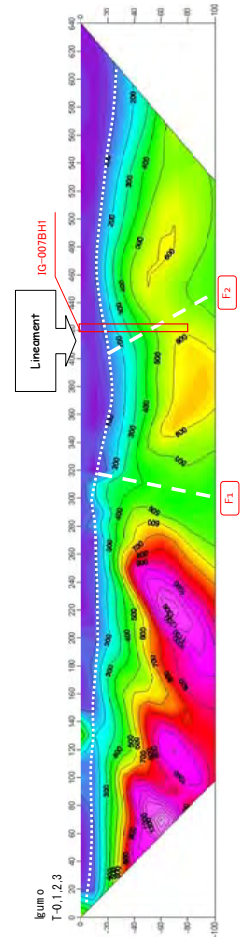
レベル2: カコラ村 探査 No.1 (2/2)



水質確認サイト: ブヘケラ村



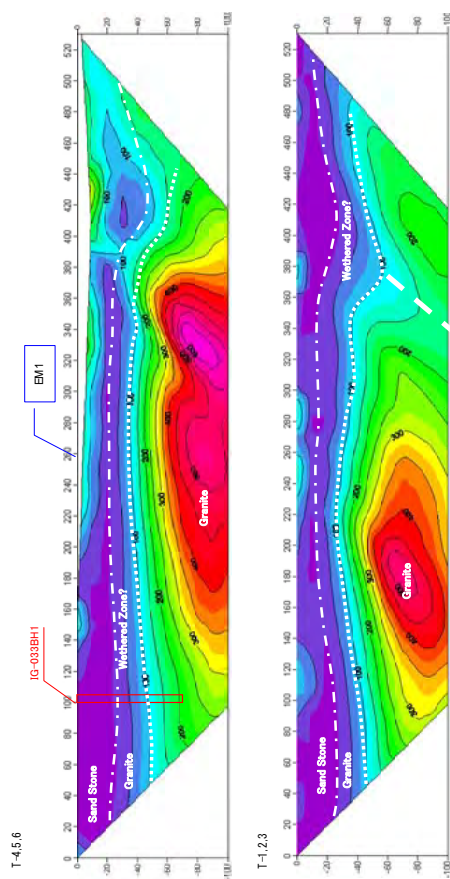
レベル2: カコラ村 探査 No.1 (1/2)



水質確認サイト: イグモ村

図-2 比抵抗二次元断面図・EMプロファイル・ラドンプロファイル (7/8)



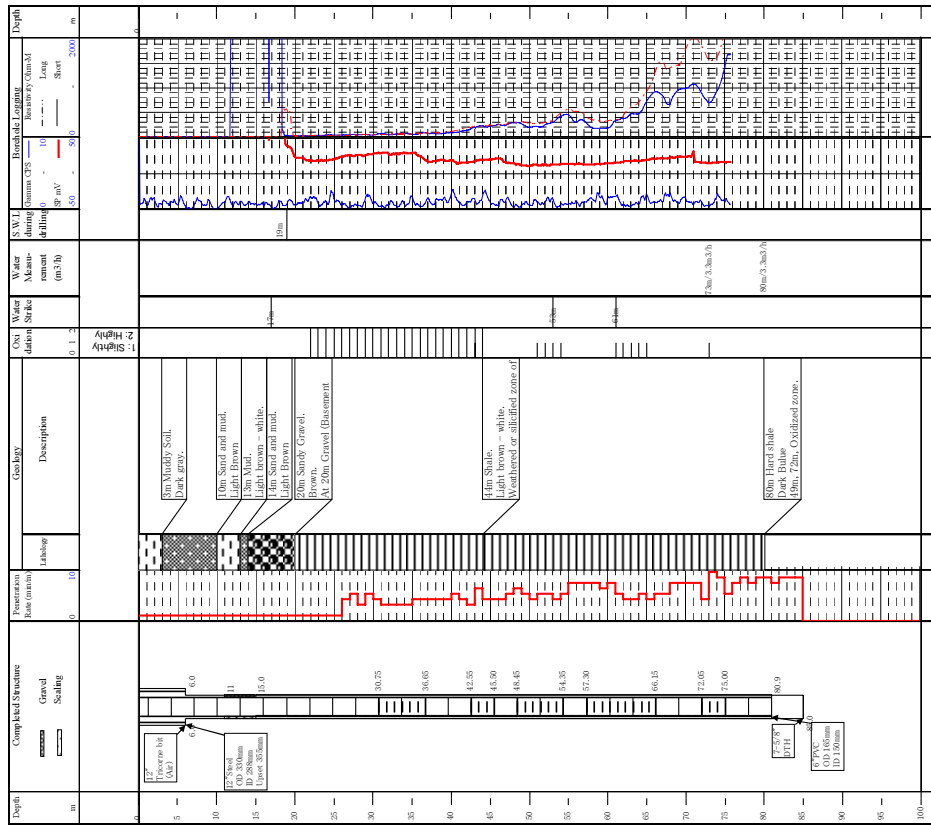


水質確認サイト：カゴングワ村

図-2 比抵抗二次元断面図・EM プロファイル・ラドンプロファイル (8/8)

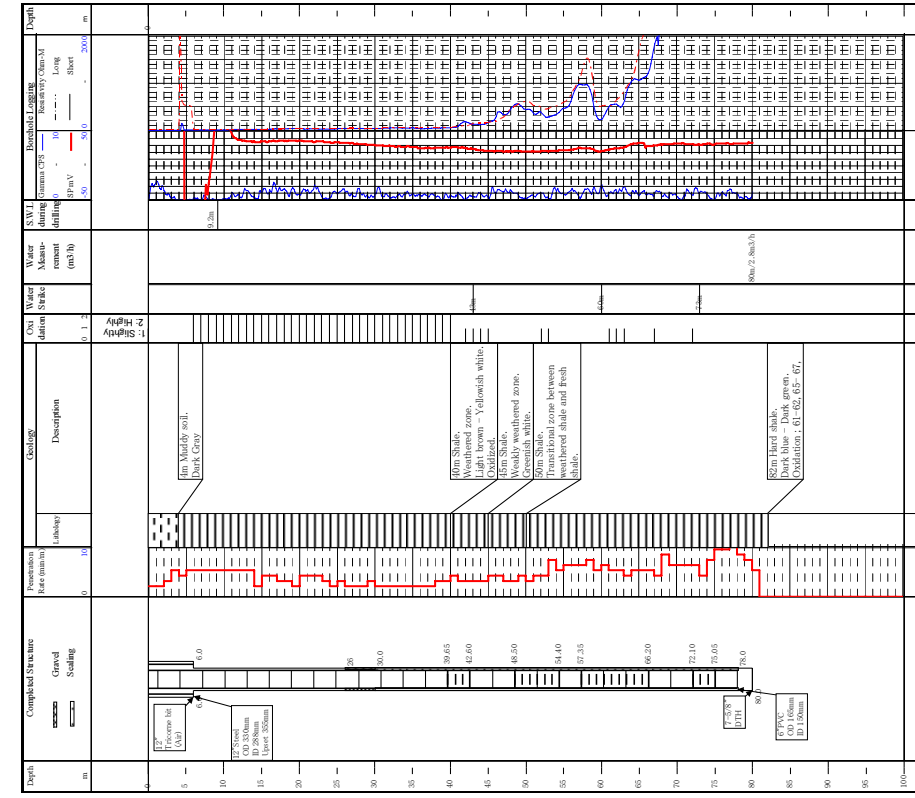


Drilling No. **NZ-047BH1** Registration No. **672,2010** Date of Commencement **24-Sep-10**  
 Village **Isanga** GPS Coordinates (Are 1960): **27-Sep-10**  
 Ward **Lusu** X Y Contractor **DDCA**  
 District/Municipality **Nzega** **36M0523911** **9550830** Rtg. **Sankyo** Drille **Tibo**



イサンガ村 1号井

Drilling No. **NZ-047BH2** Registration No. **672,2010** Date of Commencement **27-Sep-10**  
 Village **Isanga** GPS Coordinates (Are 1960): **28-Sep-10**  
 Ward **Lusu** X Y Contractor **DDCA**  
 District/Municipality **Nzega** **36M0524030** **9550844** Rtg. **Sankyo** Drille **Tibo**



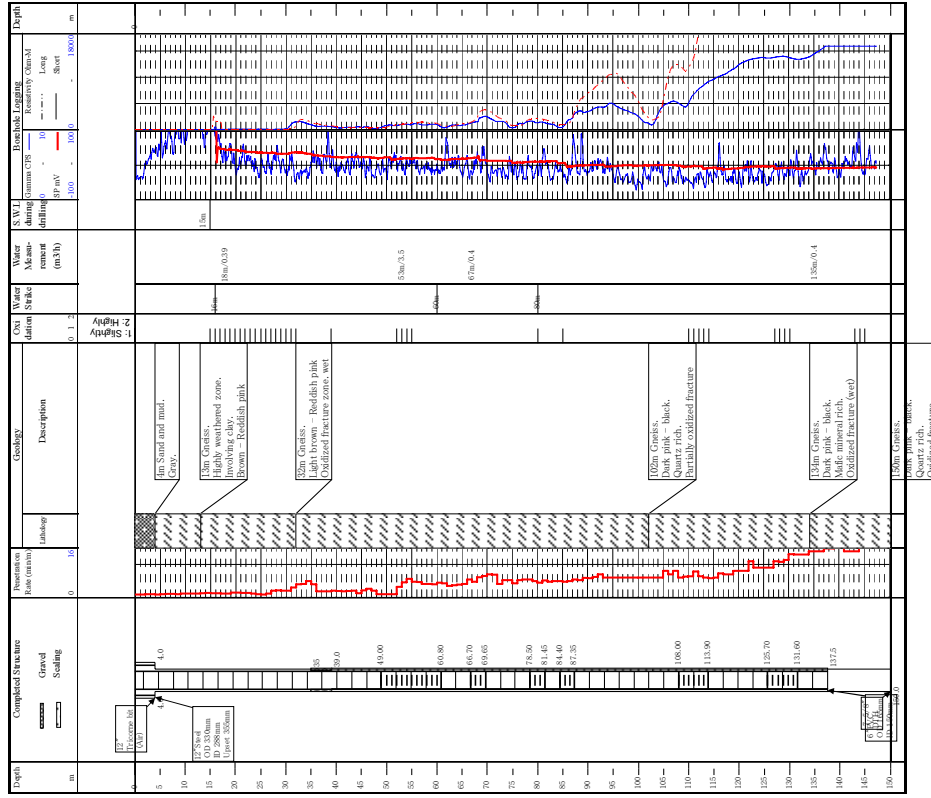
イサンガ村 2号井

図-3 掘削柱状図 (1/8)

Drilling No. SK-028BH2  
 Village Usunga  
 Ward Kipanga  
 District/Municipality Sikonge

Registration No. 671/2010  
 GPS Coordinates (Arc 1960) X Y  
 36M0494744 9368375

Date of Commencement 18-Sep-10  
 Date of Completion 22-Sep-10  
 Contractor DCCA  
 Reg. Sankyo Drille Tib

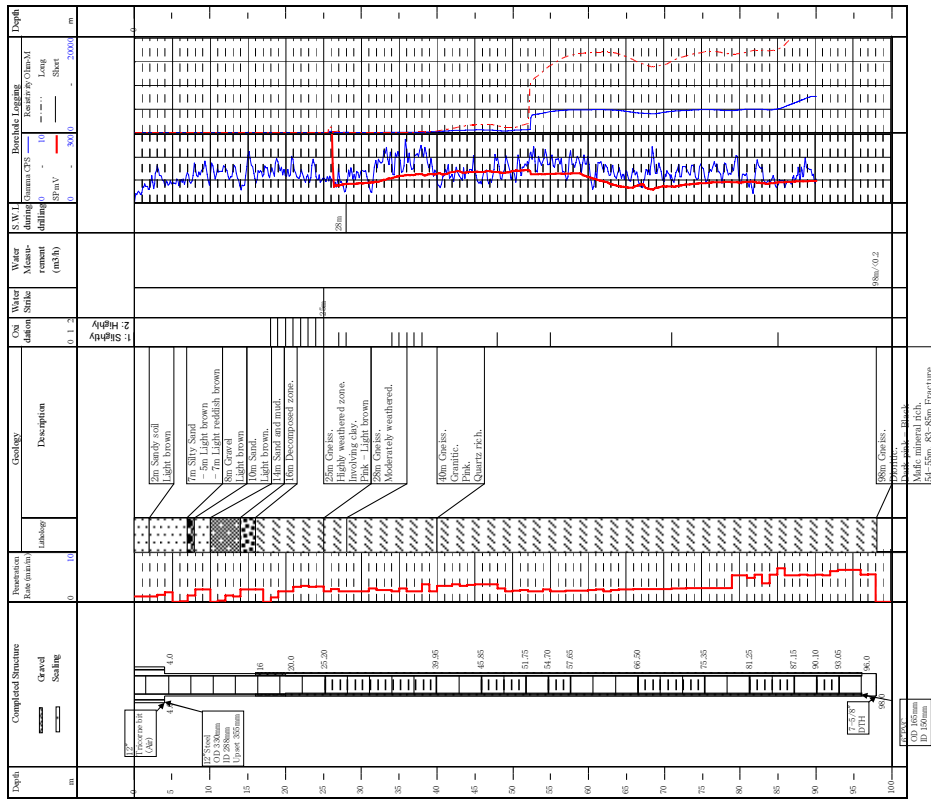


ウスンガ村 2号井

Drilling No. SK-028BH1  
 Village Usunga  
 Ward Kipanga  
 District/Municipality Sikonge

Registration No. 670/2010  
 GPS Coordinates (Arc 1960) X Y  
 36M0492530 9368238

Date of Commencement 14-Sep-10  
 Date of Completion 17-Sep-10  
 Contractor DCCA  
 Reg. Sankyo Drille Tib



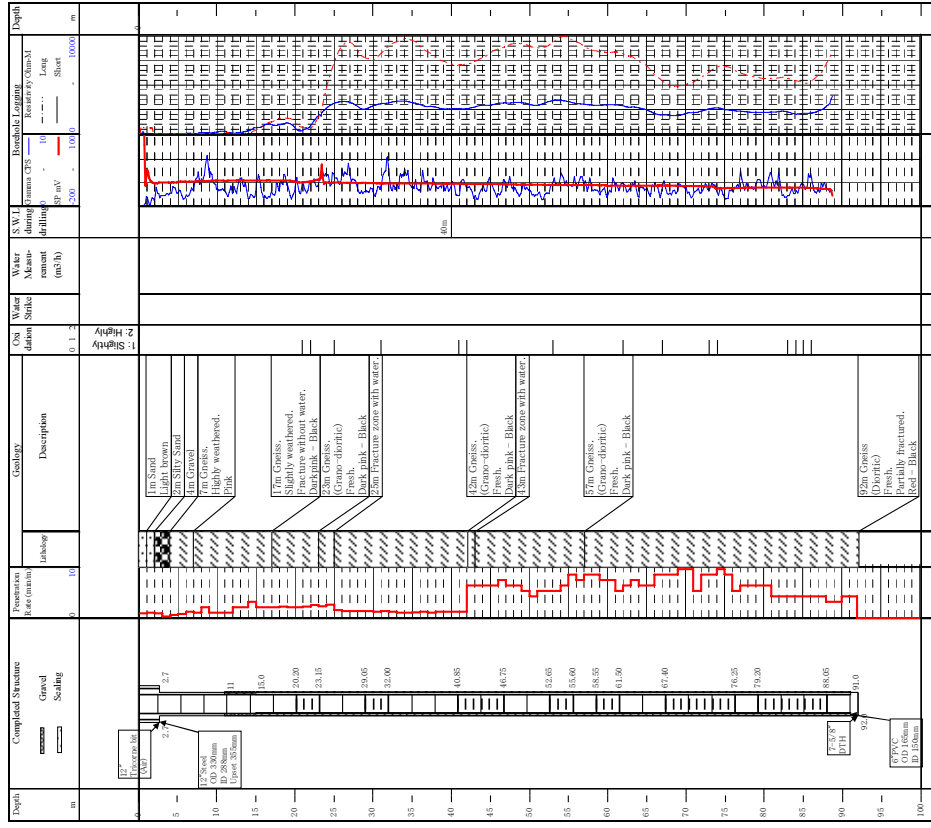
ウスンガ村 1号井

図-3 掘削柱状図 (2/8)

Drilling No. SK-037BH2  
 Village Mponbwe  
 Ward Pangale  
 District/Municipality Sikonge

Registration No. 669/2010  
 GPS Coordinates (Are 1960) X Y  
 36M0465783 9405719

Date of Commencement 12-Sep-10  
 Date of Completion 13-Sep-10  
 Contractor DDCA  
 Rig Sankyo Drille Tito

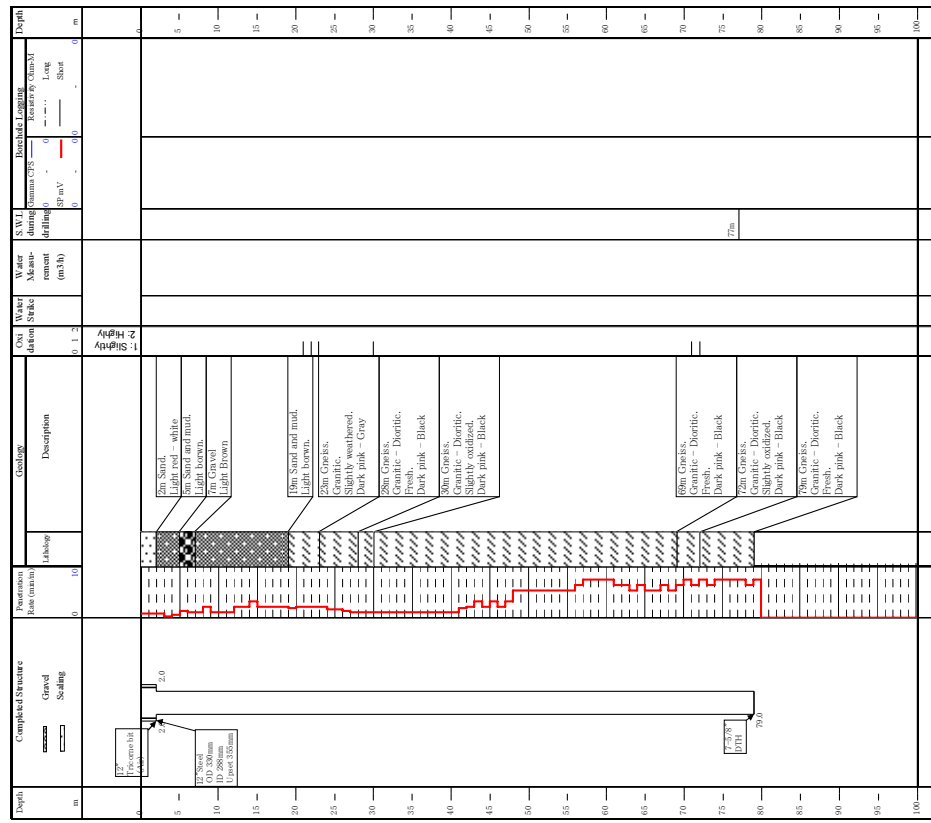


ムボンブウェ村 2号井

Drilling No. SK-037BH1  
 Village Mponbwe  
 Ward Pangale  
 District/Municipality Sikonge

Registration No. 669/2010  
 GPS Coordinates (Are 1960) X Y  
 36M0466529 9402556

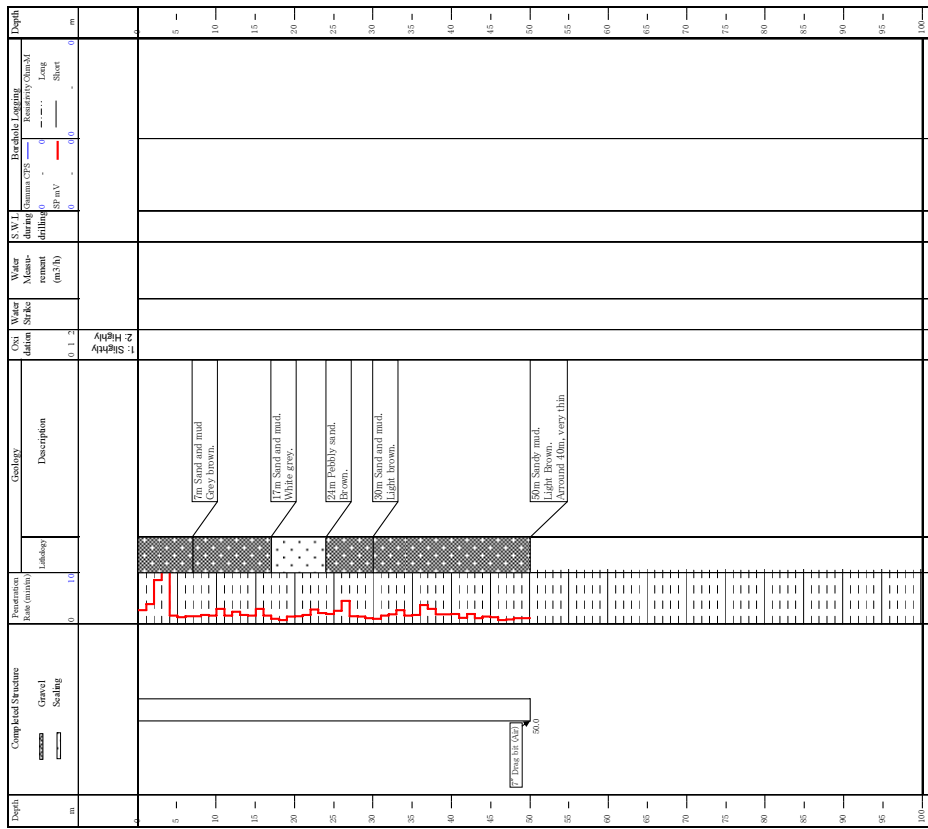
Date of Commencement 10-Sep-10  
 Date of Completion 11-Sep-10  
 Contractor DDCA  
 Rig Sankyo Drille Tito



ムボンブウェ村 1号井

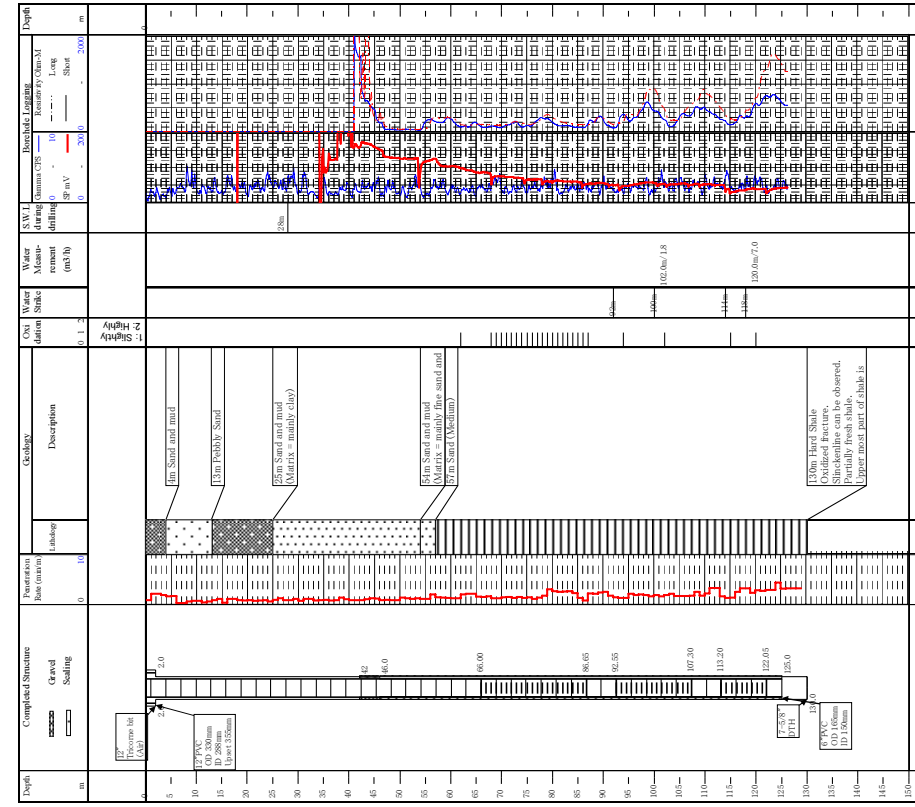
図-3 掘削柱状図 (3/8)

Drilling No. **TR-054BH1** Registration No. **6622010** Date of Commencement **17-Aug-10**  
 Village **Mpumbuli** GPS Coordinates (Are 1960): **17-Aug-10**  
 Ward **Kizeng'wi** X Y Contractor **DJCA**  
 District/Municipality **Tabora Rural** **36M0549469** **9413752** Rig **Shlum** Drille **Kariza**



ムブンブリ村 1号井

Drilling No. **TR-054BH2** Registration No. **6622010** Date of Commencement **18-Aug-10**  
 Village **Mpumbuli** GPS Coordinates (Are 1960): **19-Aug-10**  
 Ward **Kizeng'wi** X Y Contractor **DJCA**  
 District/Municipality **Tabora Rural** **36M0549535** **9413742** Rig **Shlum** Drille **Kariza**

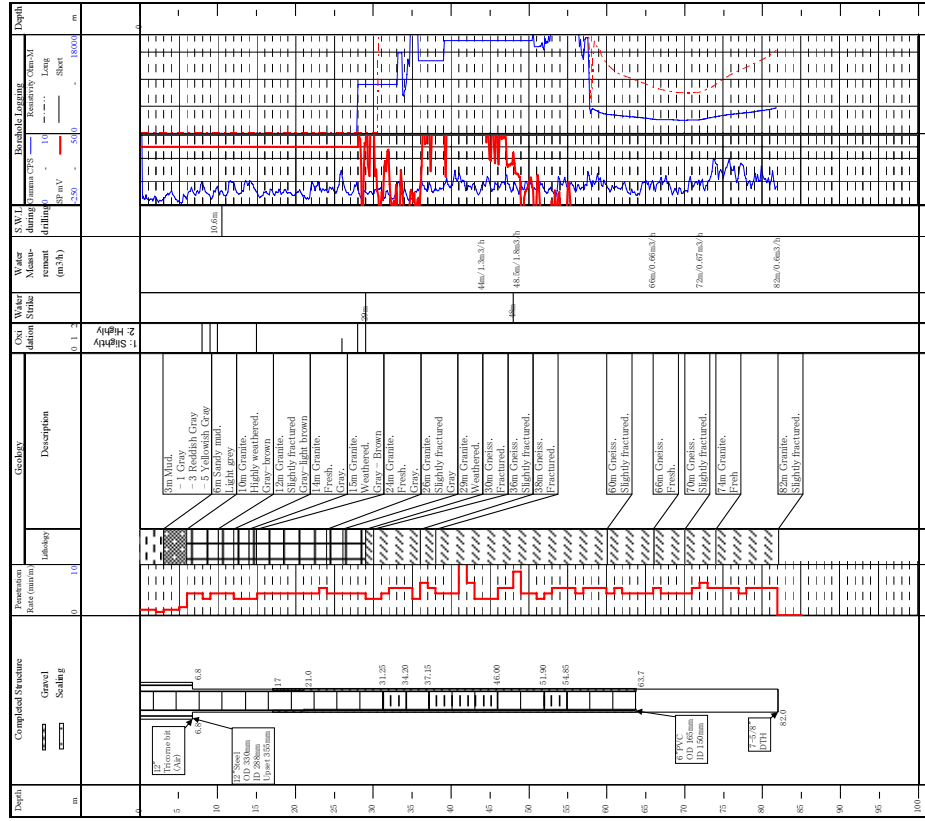


ムブンブリ村 2号井

図-3 掘削柱状図 (4/8)

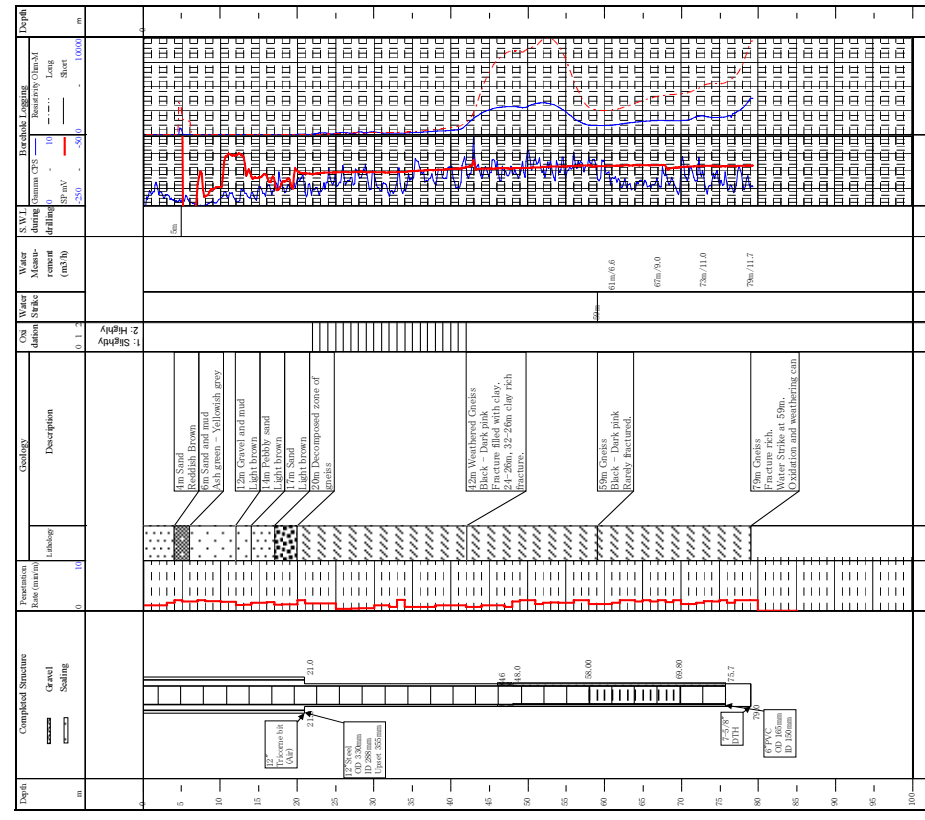


Drilling No. TR-069BH2  
 Registration No. 665/2010  
 Date of Commencement 10-Sep-10  
 Village Mabama  
 GPS Coordinates (Ari 1960) X Y  
 Date of Completion 13-Sep-10  
 Contractor DDCA  
 Ward Mabama  
 District/Municipality Tabora Rural  
 Rg Shlum Drille Kanza  
 36M0448362 9433208



マバマ村 2号井

Drilling No. TR-069BH1  
 Registration No. 664/2010  
 Date of Commencement 1-Sep-10  
 Village Mabama  
 GPS Coordinates (Ari 1960) X Y  
 Date of Completion 9-Sep-10  
 Contractor DDCA  
 Ward Mabama  
 District/Municipality Tabora Rural  
 Rg Shlum Drille Kanza  
 36M0448218 9433981



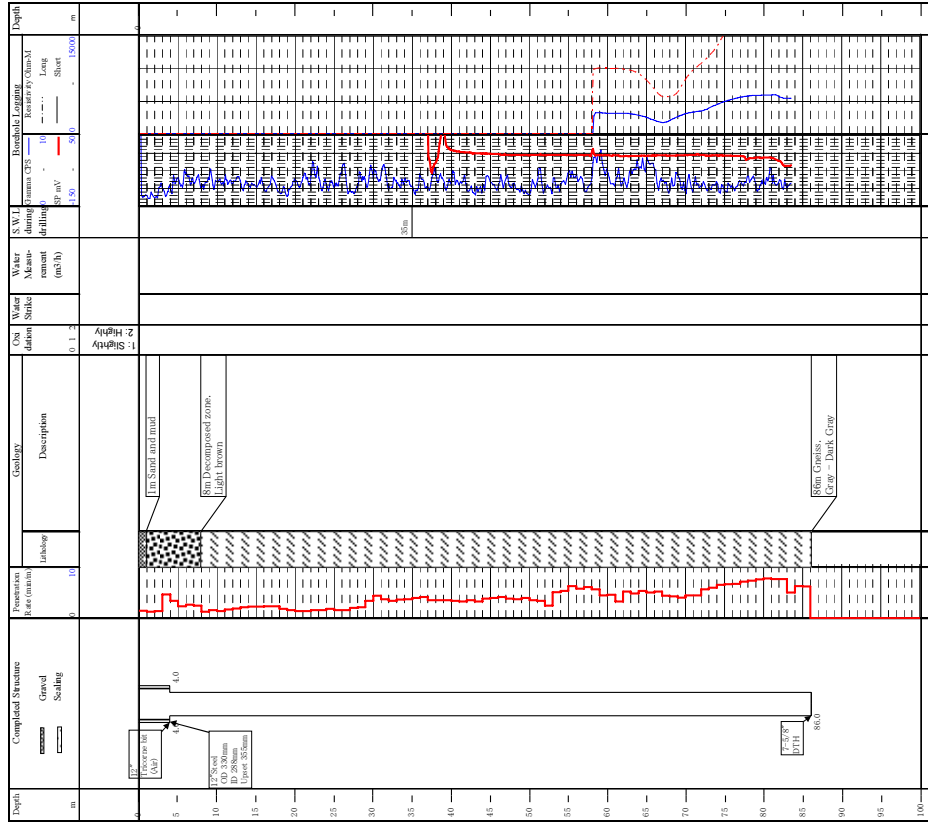
マバマ村 1号井

図-3 掘削柱状図 (5/8)

Drilling No. TR-098BH1  
 Village Ufuluma  
 Ward Ufuluma  
 District/Municipality Tabora Rural

Registration No. X  
 GPS Coordinates (Are 1960) 36M042250 9447793

Date of Commencement 19-Sep-10  
 Date of Completion 22-Sep-10  
 Contractor DDKA  
 Reg. Shtun Dille Kanza

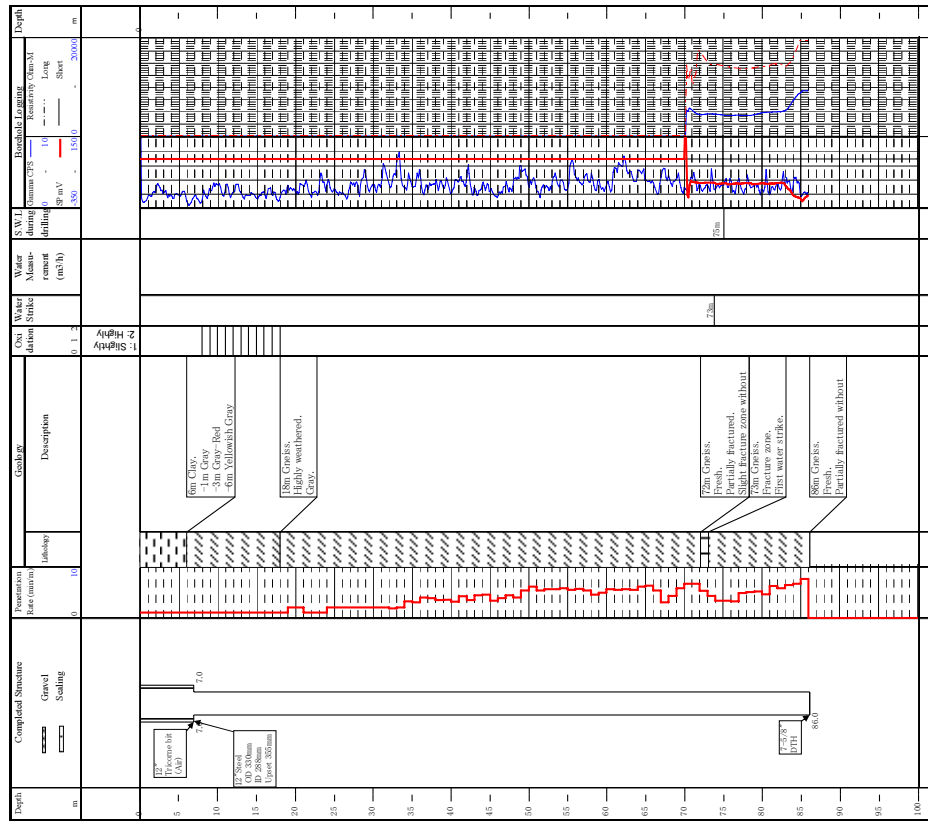


ウフルマ村 1号井

Drilling No. TR-069BH3  
 Village Mabamba  
 Ward Mabamba  
 District/Municipality Tabora Rural

Registration No. X  
 GPS Coordinates (Are 1960) 36M0448517 9433250

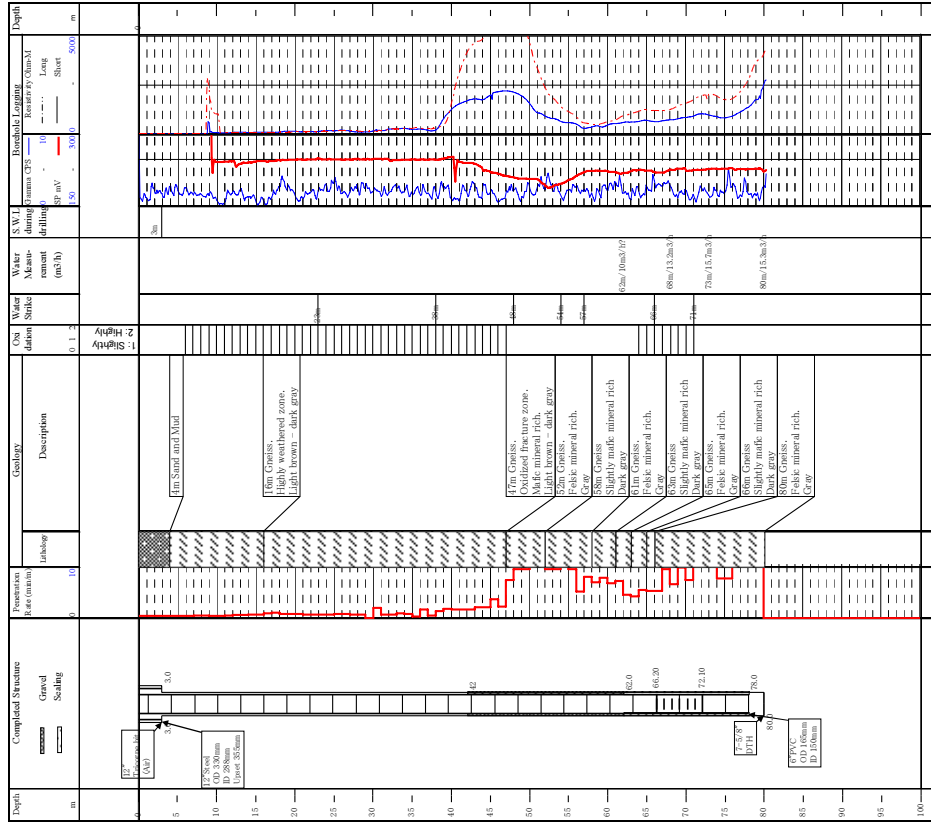
Date of Commencement 14-Sep-10  
 Date of Completion 16-Sep-10  
 Contractor DDKA  
 Reg. Shtun Dille Kanza



マバマ村 3号井

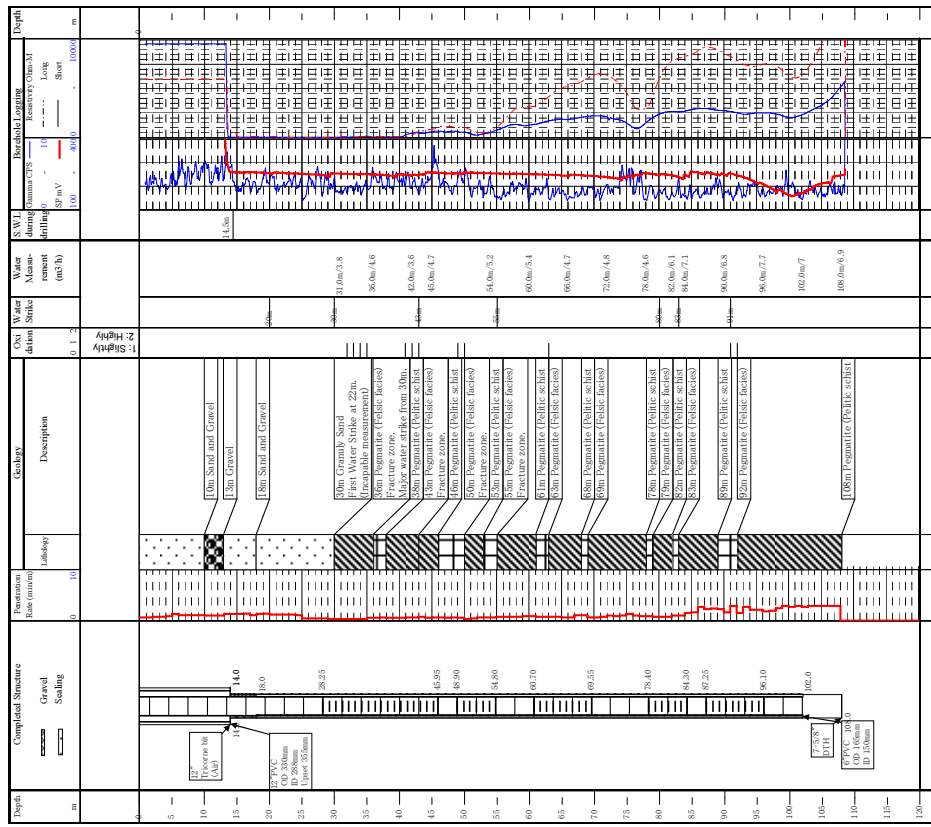
図-3 掘削柱状図 (6/8)

Drilling No. IG-007BHI Registration No. 675/2010 Date of Commencement 24-Sep-10  
 Village Igumo GPS Coordinates (Are 1960) Date of Completion 28-Sep-10  
 Ward Chaburwa X Y Contractor DDCA  
 District/Municipality Iganga 36M0551014 9495593  
 Reg. Siltum Drille Kanza



イグモ村 1号井

Drilling No. TU-008BHI Registration No. 663/2010 Date of Commencement 26-Aug-10  
 Village Kakola GPS Coordinates (Are 1960) Date of Completion 31-Aug-10  
 Ward Kakola X Y Contractor DDCA  
 District/Municipality Tabora Urban 36M0482083 9462843  
 Reg. Siltum Drille Kanza



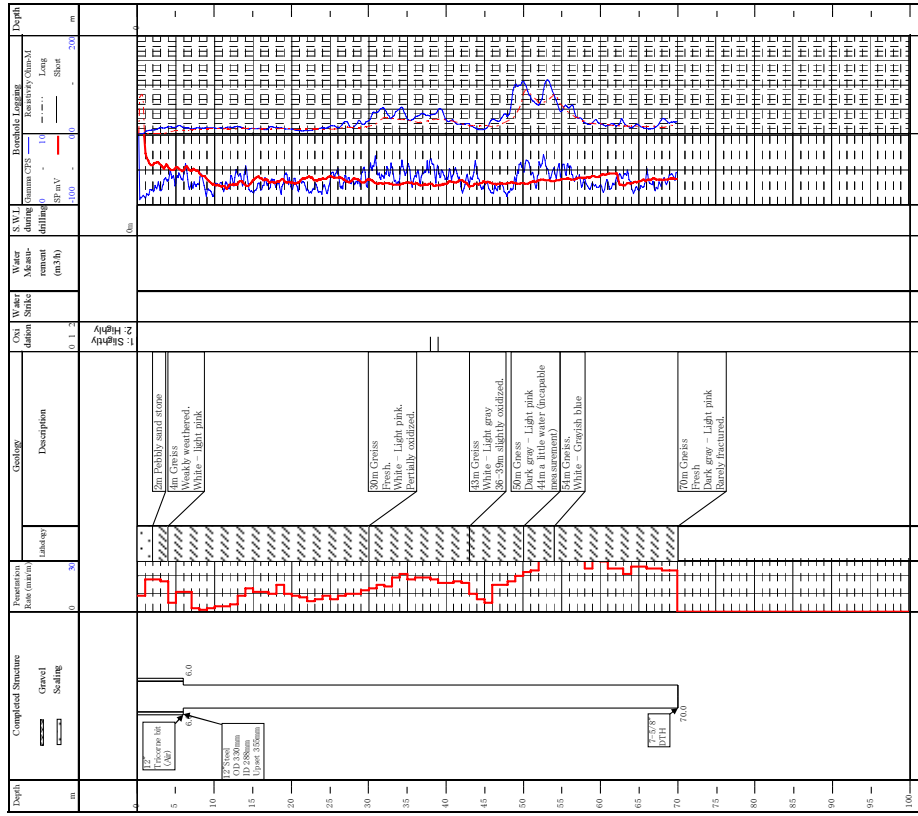
カコラ村 1号井

図-3 掘削柱状図 (7/8)

Drilling No. IG-012BHI  
 Village Buhelala  
 Ward Igwekeko  
 District/Municipality Iganga

Registration No. IG-012BHI  
 GPS Coordinates (Ave 1960) X Y  
 36M0578471 9472418

Date of Commencement 29-Sep-10  
 Date of Completion 6-Oct-10  
 Contractor DDCA  
 Rig Shilum Drille kanza

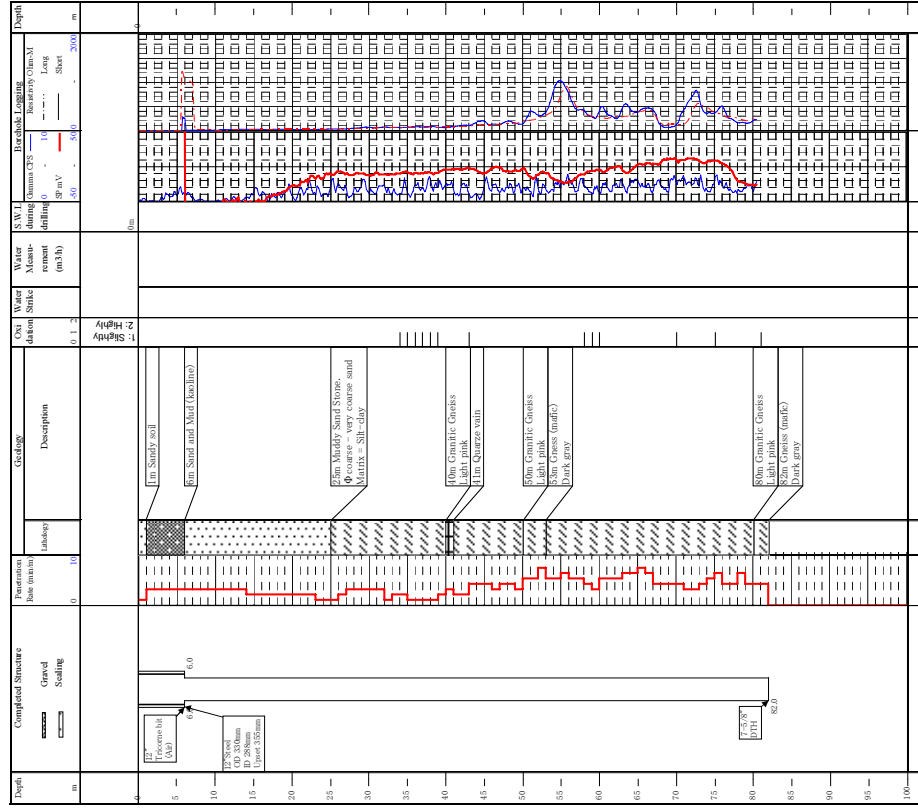


ブヘケラ村 1号井

Drilling No. IG-033BHI  
 Village Kagegwai  
 Ward Itunduru  
 District/Municipality Iganga

Registration No. IG-033BHI  
 GPS Coordinates (Ave 1960) X Y  
 36M0573228 9553481

Date of Commencement 29-Sep-10  
 Date of Completion 1-Oct-10  
 Contractor DDCA  
 Rig Sankyo Drille Tito



カゴングワ村 1号井

図-3 掘削柱状図 (8/8)



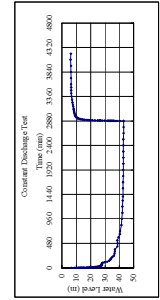
BH No. NZ-047BH1  
Borehole No. 673291D

Village Isanga  
Ward Uiten  
District/Municipality Ngema

Date of Submission 28-Oct-08  
Contractor DJCA

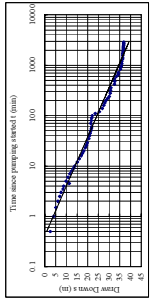
**Drying Results**

Completion Date	26-Sep-10
Static Water Level (m)	2.30
Blowdown Yield (L/min)	2880
Screen Position (m)	78
Flow Rate (m <sup>3</sup> /h)	38.65 @ 2.4
D.W.L. after 2 hr (m)	47.50
Specific Capacity after 2hr (m <sup>3</sup> /h/m)	97.53 @ 6.2
Specific Capacity after 12hr (m <sup>3</sup> /h/m)	72.17 @ 5.0
Recessed D.W.L. after 12hr (m)	35.31
Recessed D.W.L. after 18hr (m)	18.00



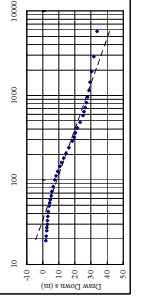
**Step-Drawdown Test**

Date	26-Oct-10
Static Water Level (m)	5.32
Step	1
Discharge (m <sup>3</sup> /h)	38.65
Q (m <sup>3</sup> /h)	38.65
D.W.L. (m)	23.70
s (m)	18.38
Q/s (m <sup>3</sup> /h/m)	2.10
Step	2
Discharge (m <sup>3</sup> /h)	45.67
Q (m <sup>3</sup> /h)	45.67
D.W.L. (m)	28.41
s (m)	22.99
Q/s (m <sup>3</sup> /h/m)	1.99
Step	3
Discharge (m <sup>3</sup> /h)	65.67
Q (m <sup>3</sup> /h)	65.67
D.W.L. (m)	33.09
s (m)	27.57
Q/s (m <sup>3</sup> /h/m)	2.38



**Analysis Results of Constant Discharge Rate Pumping Test**

Q (m <sup>3</sup> /h)	38.65
D.W.L. (m)	23.70
s (m)	18.38
Q/s (m <sup>3</sup> /h/m)	2.10
Screen Pipe Length (m)	78.63
L (m)	78.63
L <sup>2</sup> (m <sup>2</sup> )	6182.68
K (m <sup>3</sup> /h/m)	1.94 @ 5.0
K (m <sup>3</sup> /h/m)	1.94 @ 5.0
K (m <sup>3</sup> /h/m)	1.94 @ 5.0



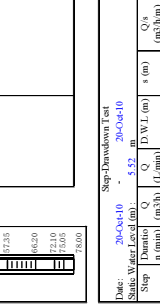
BH No. NZ-047BH2  
Borehole No. 673291D

Village Isanga  
Ward Uiten  
District/Municipality Ngema

Date of Submission 28-Oct-08  
Contractor DJCA

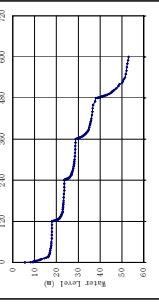
**Drying Results**

Completion Date	26-Sep-10
Static Water Level (m)	2.30
Blowdown Yield (L/min)	2880
Screen Position (m)	78
Flow Rate (m <sup>3</sup> /h)	38.65 @ 2.4
D.W.L. after 2 hr (m)	47.50
Specific Capacity after 2hr (m <sup>3</sup> /h/m)	97.53 @ 6.2
Specific Capacity after 12hr (m <sup>3</sup> /h/m)	72.17 @ 5.0
Recessed D.W.L. after 12hr (m)	35.31
Recessed D.W.L. after 18hr (m)	18.00



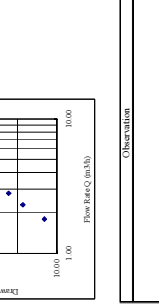
**Step-Drawdown Test**

Date	26-Oct-10
Static Water Level (m)	5.32
Step	1
Discharge (m <sup>3</sup> /h)	38.65
Q (m <sup>3</sup> /h)	38.65
D.W.L. (m)	23.70
s (m)	18.38
Q/s (m <sup>3</sup> /h/m)	2.10
Step	2
Discharge (m <sup>3</sup> /h)	45.67
Q (m <sup>3</sup> /h)	45.67
D.W.L. (m)	28.41
s (m)	22.99
Q/s (m <sup>3</sup> /h/m)	1.99
Step	3
Discharge (m <sup>3</sup> /h)	65.67
Q (m <sup>3</sup> /h)	65.67
D.W.L. (m)	33.09
s (m)	27.57
Q/s (m <sup>3</sup> /h/m)	2.38



**Analysis Results of Constant Discharge Rate Pumping Test**

Q (m <sup>3</sup> /h)	38.65
D.W.L. (m)	23.70
s (m)	18.38
Q/s (m <sup>3</sup> /h/m)	2.10
Screen Pipe Length (m)	78.63
L (m)	78.63
L <sup>2</sup> (m <sup>2</sup> )	6182.68
K (m <sup>3</sup> /h/m)	1.94 @ 5.0
K (m <sup>3</sup> /h/m)	1.94 @ 5.0
K (m <sup>3</sup> /h/m)	1.94 @ 5.0



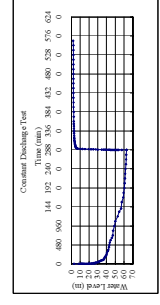
BH No. NZ-047BH1  
Borehole No. 6722010

Village Isanga  
Ward Uiten  
District/Municipality Ngema

Date of Submission 28-Oct-08  
Contractor DJCA

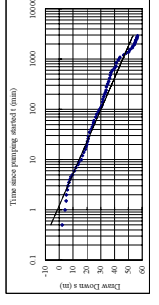
**Drying Results**

Completion Date	27-Sep-10
Static Water Level (m)	19.60
Blowdown Yield (L/min)	80.50
Screen Position (m)	80.50
Flow Rate (m <sup>3</sup> /h)	38.75 @ 6.65
D.W.L. after 2 hr (m)	47.13
Specific Capacity after 2hr (m <sup>3</sup> /h/m)	97.53 @ 6.2
Specific Capacity after 12hr (m <sup>3</sup> /h/m)	72.17 @ 5.0
Recessed D.W.L. after 12hr (m)	35.31
Recessed D.W.L. after 18hr (m)	18.00



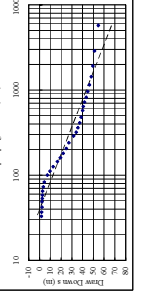
**Step-Drawdown Test**

Date	17-Oct-10
Static Water Level (m)	1.74
Step	1
Discharge (m <sup>3</sup> /h)	38.65
Q (m <sup>3</sup> /h)	38.65
D.W.L. (m)	24.60
s (m)	22.86
Q/s (m <sup>3</sup> /h/m)	1.69
Step	2
Discharge (m <sup>3</sup> /h)	45.67
Q (m <sup>3</sup> /h)	45.67
D.W.L. (m)	29.27
s (m)	27.53
Q/s (m <sup>3</sup> /h/m)	1.65
Step	3
Discharge (m <sup>3</sup> /h)	65.67
Q (m <sup>3</sup> /h)	65.67
D.W.L. (m)	34.26
s (m)	32.52
Q/s (m <sup>3</sup> /h/m)	2.02



**Analysis Results of Constant Discharge Rate Pumping Test**

Q (m <sup>3</sup> /h)	38.65
D.W.L. (m)	24.60
s (m)	22.86
Q/s (m <sup>3</sup> /h/m)	1.69
Screen Pipe Length (m)	80.53
L (m)	80.53
L <sup>2</sup> (m <sup>2</sup> )	6485.18
K (m <sup>3</sup> /h/m)	1.69 @ 5.0
K (m <sup>3</sup> /h/m)	1.69 @ 5.0
K (m <sup>3</sup> /h/m)	1.69 @ 5.0



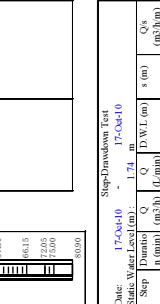
BH No. NZ-047BH2  
Borehole No. 6722010

Village Isanga  
Ward Uiten  
District/Municipality Ngema

Date of Submission 28-Oct-08  
Contractor DJCA

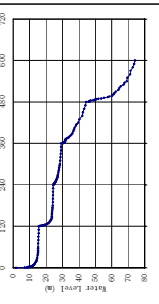
**Drying Results**

Completion Date	27-Sep-10
Static Water Level (m)	19.60
Blowdown Yield (L/min)	80.50
Screen Position (m)	80.50
Flow Rate (m <sup>3</sup> /h)	38.75 @ 6.65
D.W.L. after 2 hr (m)	47.13
Specific Capacity after 2hr (m <sup>3</sup> /h/m)	97.53 @ 6.2
Specific Capacity after 12hr (m <sup>3</sup> /h/m)	72.17 @ 5.0
Recessed D.W.L. after 12hr (m)	35.31
Recessed D.W.L. after 18hr (m)	18.00



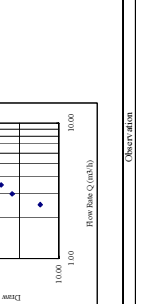
**Step-Drawdown Test**

Date	17-Oct-10
Static Water Level (m)	1.74
Step	1
Discharge (m <sup>3</sup> /h)	38.65
Q (m <sup>3</sup> /h)	38.65
D.W.L. (m)	24.60
s (m)	22.86
Q/s (m <sup>3</sup> /h/m)	1.69
Step	2
Discharge (m <sup>3</sup> /h)	45.67
Q (m <sup>3</sup> /h)	45.67
D.W.L. (m)	29.27
s (m)	27.53
Q/s (m <sup>3</sup> /h/m)	1.65
Step	3
Discharge (m <sup>3</sup> /h)	65.67
Q (m <sup>3</sup> /h)	65.67
D.W.L. (m)	34.26
s (m)	32.52
Q/s (m <sup>3</sup> /h/m)	2.02



**Analysis Results of Constant Discharge Rate Pumping Test**

Q (m <sup>3</sup> /h)	38.65
D.W.L. (m)	24.60
s (m)	22.86
Q/s (m <sup>3</sup> /h/m)	1.69
Screen Pipe Length (m)	80.53
L (m)	80.53
L <sup>2</sup> (m <sup>2</sup> )	6485.18
K (m <sup>3</sup> /h/m)	1.69 @ 5.0
K (m <sup>3</sup> /h/m)	1.69 @ 5.0
K (m <sup>3</sup> /h/m)	1.69 @ 5.0



イサンガ村 2号井

イサンガ村 1号井

図-4 揚水試験結果 (1/6)

BH No. NZ-047B12 Date of Submission 03-Jan-00  
 Borehole No. 67272010 Contractor DDCA

BH No. NZ-047B11 Date of Submission 28-Oct-08  
 Borehole No. 67272010 Contractor DDCA

Village Isanga  
 Ward Lushu  
 District/Municipality Nzezi

Village Isanga  
 Ward Lushu  
 District/Municipality Nzezi

Well Structure

1	10.00
2	10.00
3	10.00
4	10.00
5	10.00
6	10.00
7	10.00
8	10.00
9	10.00
10	10.00
11	10.00
12	10.00
13	10.00
14	10.00
15	10.00
16	10.00
17	10.00
18	10.00
19	10.00
20	10.00
21	10.00
22	10.00
23	10.00
24	10.00
25	10.00
26	10.00
27	10.00
28	10.00
29	10.00
30	10.00
31	10.00
32	10.00
33	10.00
34	10.00
35	10.00
36	10.00
37	10.00
38	10.00
39	10.00
40	10.00
41	10.00
42	10.00
43	10.00
44	10.00
45	10.00
46	10.00
47	10.00
48	10.00
49	10.00
50	10.00

Well Structure

1	10.00
2	10.00
3	10.00
4	10.00
5	10.00
6	10.00
7	10.00
8	10.00
9	10.00
10	10.00
11	10.00
12	10.00
13	10.00
14	10.00
15	10.00
16	10.00
17	10.00
18	10.00
19	10.00
20	10.00
21	10.00
22	10.00
23	10.00
24	10.00
25	10.00
26	10.00
27	10.00
28	10.00
29	10.00
30	10.00
31	10.00
32	10.00
33	10.00
34	10.00
35	10.00
36	10.00
37	10.00
38	10.00
39	10.00
40	10.00
41	10.00
42	10.00
43	10.00
44	10.00
45	10.00
46	10.00
47	10.00
48	10.00
49	10.00
50	10.00

Drilling Results

Completion Date:	27-Sep-10
Static Water Level (m):	19.00
Flow Rate (m <sup>3</sup> /min):	0.00
Screen Position (m-m):	80.9
Static Water Level (m):	19.00
Duration (min):	1800
Q (m <sup>3</sup> /min):	3.30 m <sup>3</sup> /min
D.W.L. (m):	30.75-36.65
Recovery (min):	42:55-44:55
Static Water Level (m):	45:50
Recovery (min):	57:46-1:05
Static Water Level (m):	57:46-1:05
Recovery (min):	1:05-1:15
Static Water Level (m):	66:15
Recovery (min):	72:05
Static Water Level (m):	75:00
Recovery (min):	80:00

Drilling Results

Completion Date:	28-Sep-10
Static Water Level (m):	92.20
Flow Rate (m <sup>3</sup> /min):	0.00
Screen Position (m-m):	78
Static Water Level (m):	92.20
Duration (min):	1800
Q (m <sup>3</sup> /min):	3.00 m <sup>3</sup> /min
D.W.L. (m):	39.65
Recovery (min):	48:55-54:4
Static Water Level (m):	42:00
Recovery (min):	52:15-58:22
Static Water Level (m):	52:15-58:22
Recovery (min):	57:17-59:07
Static Water Level (m):	57:17-59:07
Recovery (min):	68:50
Static Water Level (m):	67:35
Recovery (min):	66:30
Static Water Level (m):	72:10
Recovery (min):	75:05
Static Water Level (m):	78:00

Constant Discharge Rate Pumping Test

Static Water Level (m):	24.65-10
Flow Rate (m <sup>3</sup> /min):	1.80
Duration (min):	1800
Q (m <sup>3</sup> /min):	1.80 m <sup>3</sup> /min
D.W.L. (m):	31.00
Recovery (min):	41:29
Static Water Level (m):	40:00
Recovery (min):	52:12
Static Water Level (m):	52:12
Recovery (min):	60:58

Constant Discharge Rate Pumping Test

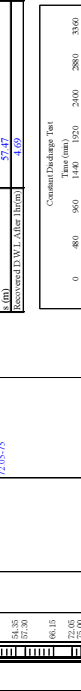
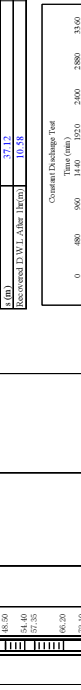
Static Water Level (m):	24.65-10
Flow Rate (m <sup>3</sup> /min):	1.90
Duration (min):	1800
Q (m <sup>3</sup> /min):	3.30 m <sup>3</sup> /min
D.W.L. (m):	29.27
Recovery (min):	41:58
Static Water Level (m):	41:58
Recovery (min):	57:47
Static Water Level (m):	57:47
Recovery (min):	4:09

Constant Discharge Rate Pumping Test

Static Water Level (m):	24.65-10
Flow Rate (m <sup>3</sup> /min):	3.7 m <sup>3</sup> /min
Duration (min):	1800
Q (m <sup>3</sup> /min):	14.50257 (42 min)
D.W.L. (m):	27.44-50.0
Recovery (min):	26.55
Static Water Level (m):	0.77
Recovery (min):	1:29:45-1:35
Static Water Level (m):	1:29:45-1:35
Recovery (min):	4:33:25-4:41

Constant Discharge Rate Pumping Test

Static Water Level (m):	24.65-10
Flow Rate (m <sup>3</sup> /min):	3.7 m <sup>3</sup> /min
Duration (min):	1800
Q (m <sup>3</sup> /min):	10.18378 (42 min)
D.W.L. (m):	46.83-59.4
Recovery (min):	27:52-1:14
Static Water Level (m):	0
Recovery (min):	0.02
Static Water Level (m):	6:30:19-6:36
Recovery (min):	2:56:21-2:57



Step Drawdown Test

Date:					
Static Water Level (m):					
Step	Duration (min)	Q (m <sup>3</sup> /min)	D.W.L. (m)	s (m)	Q/s (m <sup>3</sup> /h.m)
1					
2					
3					
4					
5					

Step Drawdown Test

Date:					
Static Water Level (m):					
Step	Duration (min)	Q (m <sup>3</sup> /min)	D.W.L. (m)	s (m)	Q/s (m <sup>3</sup> /h.m)
1					
2					
3					
4					
5					

Step Drawdown Test

Date:					
Static Water Level (m):					
Step	Duration (min)	Q (m <sup>3</sup> /min)	D.W.L. (m)	s (m)	Q/s (m <sup>3</sup> /h.m)
1					
2					
3					
4					
5					

Step Drawdown Test

Date:					
Static Water Level (m):					
Step	Duration (min)	Q (m <sup>3</sup> /min)	D.W.L. (m)	s (m)	Q/s (m <sup>3</sup> /h.m)
1					
2					
3					
4					
5					

Analysis Results of Constant Discharge Rate Pumping Test

Q (m <sup>3</sup> /min)	1.80
dh1 (m)	13.671775 (42 min)
dh2 (m)	4.162525 (42 min)
Screen Pipe Length (m)	20.65
L (m/min)	0.85
T (m <sup>3</sup> /h)	1.454E+03
K (m/min)	7.041E+01

Analysis Results of Constant Discharge Rate Pumping Test

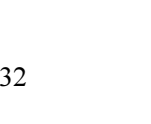
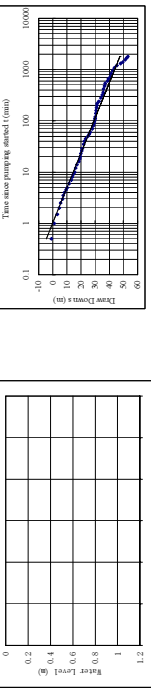
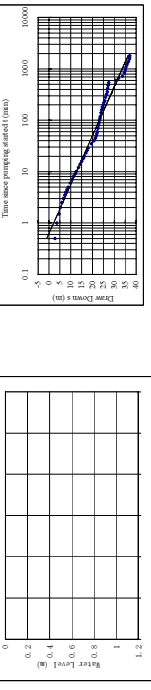
Q (m <sup>3</sup> /min)	3.7
dh1 (m)	14.50257 (42 min)
dh2 (m)	7.44-50.0 (42 min)
Screen Pipe Length (m)	26.55
L (m/min)	0.77
T (m <sup>3</sup> /h)	1.294E+03
K (m/min)	4.832E+01

Analysis Results of Constant Discharge Rate Pumping Test

Q (m <sup>3</sup> /min)	10.18378
dh1 (m)	46.83-59.4 (42 min)
dh2 (m)	27.52-1:14 (42 min)
Screen Pipe Length (m)	26.55
L (m/min)	0
T (m <sup>3</sup> /h)	6.3019E+06
K (m/min)	2.562E+07

Analysis Results of Constant Discharge Rate Pumping Test

Q (m <sup>3</sup> /min)	3 m <sup>3</sup> /min
dh1 (m)	13.800783 (42 min)
dh2 (m)	30.42044 (42 min)
Screen Pipe Length (m)	16.61976 (42 min)
L (m/min)	0.85
T (m <sup>3</sup> /h)	9.176E+06
K (m/min)	4.443E+07



Results of Recovery Test

dh1 (m)	13.800783 (42 min)
dh2 (m)	30.42044 (42 min)
Screen Pipe Length (m)	16.61976 (42 min)
L (m/min)	0.85
T (m <sup>3</sup> /h)	9.176E+06
K (m/min)	4.443E+07

Results of Recovery Test

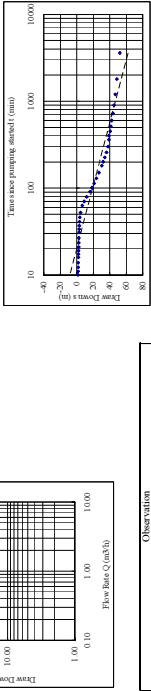
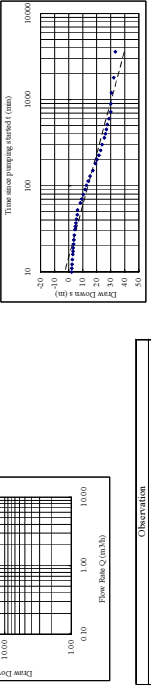
dh1 (m)	46.83-59.4 (42 min)
dh2 (m)	27.52-1:14 (42 min)
Screen Pipe Length (m)	26.55
L (m/min)	0
T (m <sup>3</sup> /h)	6.3019E+06
K (m/min)	2.562E+07

Results of Recovery Test

dh1 (m)	13.800783 (42 min)
dh2 (m)	30.42044 (42 min)
Screen Pipe Length (m)	16.61976 (42 min)
L (m/min)	0.85
T (m <sup>3</sup> /h)	9.176E+06
K (m/min)	4.443E+07

Results of Recovery Test

dh1 (m)	13.800783 (42 min)
dh2 (m)	30.42044 (42 min)
Screen Pipe Length (m)	16.61976 (42 min)
L (m/min)	0.85
T (m <sup>3</sup> /h)	9.176E+06
K (m/min)	4.443E+07



Observation  
 Simultaneous pumping test with [NZ047B11]

Observation  
 Simultaneous pumping test with [NZ047B11]

Observation  
 Simultaneous pumping test with [NZ047B11]

イサンガ村 1号井 (同村2号井との同時揚水試験)      イサンガ村 2号井 (同村1号井との同時揚水試験)      図-4 揚水試験結果 (2/6)

BH No. SK-028B412  
 Borehole No. 671/2010

Village Usunga  
 Ward Kipanga  
 District/Municipality Sikonge

Date of Submission 28-Oct-08  
 Contractor DDCA

**Drilling Results**

Completion Date	25-Sep-10
Static Water Level (m)	15.00
Flowm Yield (L/min)	134.5
Screen Position (m-m)	40-60.8
Q (m <sup>3</sup> /h)	66.746.65
D.W.L. (m)	11.729
D.W.L. after 12-hr (m)	7.72
Static charge time (hrs:m:30)	1:00:13.9
Recovered D.W.L. after 12hrs (m)	8.408

**Constant Discharge Rate Pumping Test**

Date	25-Sep-10
Static Water Level (m)	15.00
Completion Date	25-Sep-10
Flowm Yield (L/min)	134.5
Screen Position (m-m)	40-60.8
Q (m <sup>3</sup> /h)	66.746.65
D.W.L. (m)	11.729
D.W.L. after 12-hr (m)	7.72
Static charge time (hrs:m:30)	1:00:13.9
Recovered D.W.L. after 12hrs (m)	8.408

**Step Drawdown Test**

Step	Duration (min)	Q (m <sup>3</sup> /h)	D.W.L. (m)	s (m)	Q/s (m <sup>3</sup> /h/m)
1	1.20	0.60	19.83	3.44	0.174
2	1.20	0.60	21.89	4.50	0.133
3	1.20	0.60	13.33	20.08	22.69
4	1.20	1.00	16.67	56.53	59.14
5	1.20	1.20	20	69.23	42.81

Date: 27-Oct-10

Static Water Level (m): 17.39 m

**Analysis Results of Constant Discharge Rate Pumping Test**

Q (m <sup>3</sup> /h)	0.6 m <sup>3</sup> /h
dh1 (m)	20.1701 dh1 (mm)
dh2 (m)	21.2202 dh2 (mm)
Screen Pipe Length (m)	12.45
L (m-min)	0.1
L (m-min)	1.98154
K (m-min)	6.127464

**Step Drawdown Test**

**Q-s Curve**

**Analysis Results of Recovery Test**

dh1 (m)	83.1447 dh1 (mm)
dh2 (m)	94.9702 dh2 (mm)
dh (m)	11.8457
Screen Pipe Length (m)	0
L (m-min)	0
L (m-min)	3.431646
K (m-min)	0.61
K (m-min)	1.0581457

ウスンガ村 2号井

図-4 揚水試験結果 (3/6)

BH No. SK-028B411  
 Borehole No. 670/2010

Village Usunga  
 Ward Kipanga  
 District/Municipality Sikonge

Date of Submission 28-Oct-08  
 Contractor DDCA

**Drilling Results**

Completion Date	17-Sep-10
Static Water Level (m)	29.00
Flowm Yield (L/min)	58
Screen Position (m-m)	282-339.95
Q (m <sup>3</sup> /h)	48.854175
D.W.L. (m)	6.00
D.W.L. after 12-hr (m)	4.00
Static charge time (hrs:m:30)	81:28:47.15
Recovered D.W.L. after 12hrs (m)	81:03:05

**Constant Discharge Rate Pumping Test**

Date	17-Sep-10
Static Water Level (m)	29.00
Completion Date	17-Sep-10
Flowm Yield (L/min)	58
Screen Position (m-m)	282-339.95
Q (m <sup>3</sup> /h)	48.854175
D.W.L. (m)	6.00
D.W.L. after 12-hr (m)	4.00
Static charge time (hrs:m:30)	81:28:47.15
Recovered D.W.L. after 12hrs (m)	81:03:05

**Step Drawdown Test**

Step	Duration (min)	Q (m <sup>3</sup> /h)	D.W.L. (m)	s (m)	Q/s (m <sup>3</sup> /h/m)
1	1.20	0.6	6.00	0.183048	3.27801
2	1.20	1.00	6.00	0.285714	3.49999
3	1.20	1.20	6.00	0.357143	3.35999

Date: 17-Sep-10

Static Water Level (m): 29.00

**Analysis Results of Constant Discharge Rate Pumping Test**

Q (m <sup>3</sup> /h)	0.6 m <sup>3</sup> /h
dh1 (m)	6.731347 dh1 (mm)
dh2 (m)	6.731347 dh2 (mm)
Screen Pipe Length (m)	41.30
L (m-min)	0.03
L (m-min)	6.391547
K (m-min)	1.548046

**Step Drawdown Test**

**Q-s Curve**

**Analysis Results of Recovery Test**

dh1 (m)	5.831758 dh1 (mm)
dh2 (m)	70.02448 dh2 (mm)
dh (m)	15.71569
Screen Pipe Length (m)	0.05
L (m-min)	0
L (m-min)	9.705147
K (m-min)	2.5301246

ウスンガ村 1号井

BH No. **TR-044BH2**  
 Borehole No. **662/2010**

Village **Mpanabuli**  
 Ward **Kizenge**  
 District/Municipality **Tabora Rural**

Date of Submission **28-Oct-08**  
 Contractor **DDCA**

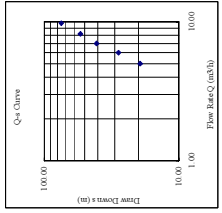
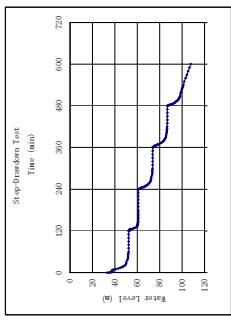
Well Structure

Dripping Results

Completion Date:	15-Oct-10
Static Water Level (m):	28.00
Screen Bottom (m):	12.5
Screen Position (m-m):	66.00-86.65, 92.55-107.50, 113.20-122.05

Step-Drawdown Test

Date:	6-Oct-10	7-Oct-10			
Static Water Level (m):	31.04	m			
Step	Duration (min)	Q (m <sup>3</sup> /h)	DWL (m)	s (m)	Q/s (m <sup>3</sup> /h.m)
1	120	5.00	38.33	52.46	19.42
2	120	6.00	100	61.10	28.06
3	120	7.00	116.07	73.82	40.78
4	120	8.20	135.67	86.93	53.91
5	120	9.80	163.33	107.69	74.65



Observation

BH No. **SK-037BH2**  
 Borehole No. **669/2010**

Village **Mpanabuli**  
 Ward **Pungule**  
 District/Municipality **Sikonge**

Date of Submission **28-Oct-08**  
 Contractor **DDCA**

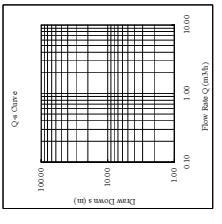
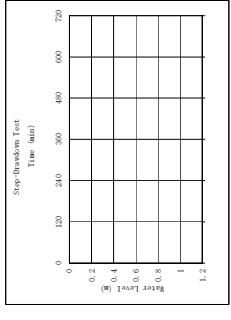
Well Structure

Dripping Results

Completion Date:	13-Sep-10
Static Water Level (m):	40.00
Screen Bottom (m):	91
Screen Position (m-m):	20.2-21.15, 29.05-32, 40.85-46.75, 53.00-58.50, 61.50-67.40, 79.20-89.05, 91.20

Step-Drawdown Test

Date:	14-Sep-08	15-Sep-08			
Static Water Level (m):	40.00	m			
Step	Duration (min)	Q (m <sup>3</sup> /h)	DWL (m)	s (m)	Q/s (m <sup>3</sup> /h.m)
1	120	0.5	41.07	41.07	0.012
2	120	0.5	41.07	41.07	0.012
3	120	0.5	41.07	41.07	0.012



Observation

BH No. **TR-044BH2**  
 Borehole No. **662/2010**

Village **Mpanabuli**  
 Ward **Kizenge**  
 District/Municipality **Tabora Rural**

Date of Submission **28-Oct-08**  
 Contractor **DDCA**

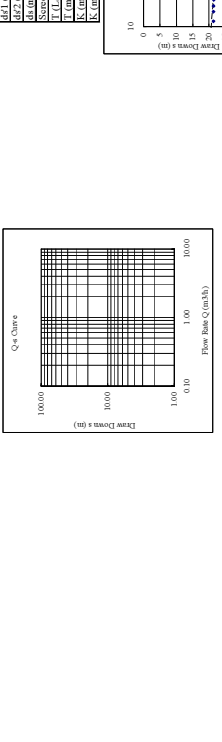
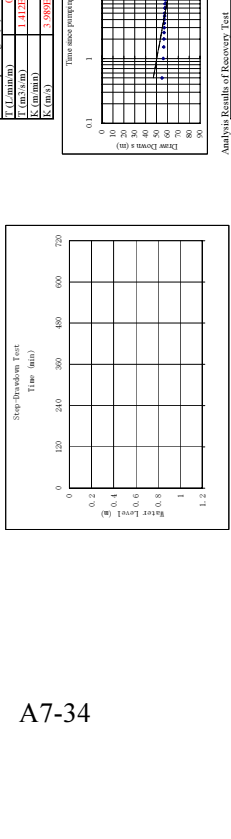
Well Structure

Dripping Results

Completion Date:	15-Oct-10
Static Water Level (m):	28.00
Screen Bottom (m):	12.5
Screen Position (m-m):	66.00-86.65, 92.55-107.50, 113.20-122.05

Step-Drawdown Test

Date:	6-Oct-10	7-Oct-10			
Static Water Level (m):	31.04	m			
Step	Duration (min)	Q (m <sup>3</sup> /h)	DWL (m)	s (m)	Q/s (m <sup>3</sup> /h.m)
1	120	5.00	38.33	52.46	19.42
2	120	6.00	100	61.10	28.06
3	120	7.00	116.07	73.82	40.78
4	120	8.20	135.67	86.93	53.91
5	120	9.80	163.33	107.69	74.65



Observation

BH No. **TR-044BH2**  
 Borehole No. **662/2010**

Village **Mpanabuli**  
 Ward **Kizenge**  
 District/Municipality **Tabora Rural**

Date of Submission **28-Oct-08**  
 Contractor **DDCA**

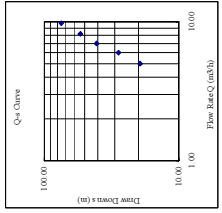
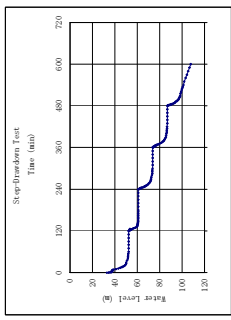
Well Structure

Dripping Results

Completion Date:	15-Oct-10
Static Water Level (m):	28.00
Screen Bottom (m):	12.5
Screen Position (m-m):	66.00-86.65, 92.55-107.50, 113.20-122.05

Step-Drawdown Test

Date:	6-Oct-10	7-Oct-10			
Static Water Level (m):	31.04	m			
Step	Duration (min)	Q (m <sup>3</sup> /h)	DWL (m)	s (m)	Q/s (m <sup>3</sup> /h.m)
1	120	5.00	38.33	52.46	19.42
2	120	6.00	100	61.10	28.06
3	120	7.00	116.07	73.82	40.78
4	120	8.20	135.67	86.93	53.91
5	120	9.80	163.33	107.69	74.65



Observation

BH No. **TR-044BH2**  
 Borehole No. **662/2010**

Village **Mpanabuli**  
 Ward **Kizenge**  
 District/Municipality **Tabora Rural**

Date of Submission **28-Oct-08**  
 Contractor **DDCA**

Well Structure

Dripping Results

Completion Date:	15-Oct-10
Static Water Level (m):	28.00
Screen Bottom (m):	12.5
Screen Position (m-m):	66.00-86.65, 92.55-107.50, 113.20-122.05

Step-Drawdown Test

Date:	6-Oct-10	7-Oct-10			
Static Water Level (m):	31.04	m			
Step	Duration (min)	Q (m <sup>3</sup> /h)	DWL (m)	s (m)	Q/s (m <sup>3</sup> /h.m)
1	120	5.00	38.33	52.46	19.42
2	120	6.00	100	61.10	28.06
3	120	7.00	116.07	73.82	40.78
4	120	8.20	135.67	86.93	53.91
5	120	9.80	163.33	107.69	74.65



Observation

ムポンブエ村 2号井

ムポンブエ村 2号井

図-4 揚水試験結果 (4/6)



BH No. TR-069BH2  
 Borehole No. 6652010

Mahanna  
 Mahanna  
 Taberna Rural

Date of Submission 29-Oct-08  
 Contractor DDCA

BH No. TR-069BH1  
 Borehole No. 6642010

Mahanna  
 Mahanna  
 Taberna Rural

Date of Submission 25-Oct-08  
 Contractor DDCA

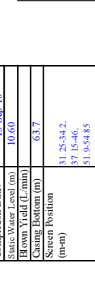
Drilling Results

Completion Date	15-Sep-10
Static Water Level (m)	10.60
Screen Bottom (m)	63.7
Screen Position (m)	
Q (m <sup>3</sup> /h)	31.25-34.2
D.W.L. (m)	17.15-18.6
Specific Capacity (liters/m <sup>3</sup> h)	11.54-14.9
Recovery (%)	67.7
Recovered D.W.L. After 1hr (m)	16.60
Recovery (%)	11.00
Recovery (%)	14.85
Recovery (%)	16.20



Constant Discharge Rate Pumping Test

Date	05-Oct-10
Static Water Level (m)	11.50
Duration (min)	2800
Q (m <sup>3</sup> /h)	28.80
D.W.L. (m)	13.14
Specific Capacity (liters/m <sup>3</sup> h)	0.02
Recovered D.W.L. After 1hr (m)	49.00
Recovery (%)	16.61



Step-Drawdown Test

Date	14-Oct-10			
Static Water Level (m)	11.68			
Step	1	2	3	4
Duration (min)	120	120	120	120
Q (m <sup>3</sup> /h)	0.60	0.60	0.60	0.60
D.W.L. (m)	17.04	21.89	10.21	5.36
Q's (m <sup>3</sup> /h)	0.60	0.60	0.60	0.60



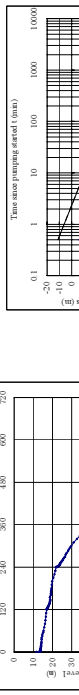
Analysis Results of Constant Discharge Rate Pumping Test

Q	0.8
d <sub>1</sub> (m)	10.7375
d <sub>2</sub> (m)	12.42
Screen Pipe Length (m)	14.75
L (m/min)	0.14
L (m <sup>3</sup> /h)	2.471546
K (m/min)	0.01
K (m <sup>3</sup> /h)	1.672421



Analysis Results of Recovery Test

Q	0.6
d <sub>1</sub> (m)	11.4425
d <sub>2</sub> (m)	16.20
Screen Pipe Length (m)	14.75
L (m/min)	0.01
K (m/min)	1.006407



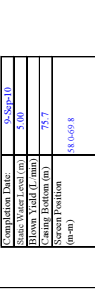
Drilling Results

Completion Date	05-Sep-10
Static Water Level (m)	5.00
Screen Bottom (m)	75.7
Screen Position (m)	
Q (m <sup>3</sup> /h)	58.6-69.8
D.W.L. (m)	57.78
Specific Capacity (liters/m <sup>3</sup> h)	0.27
Recovery (%)	67.7
Recovered D.W.L. After 1hr (m)	11.01
Recovery (%)	11.00
Recovery (%)	14.85
Recovery (%)	16.20



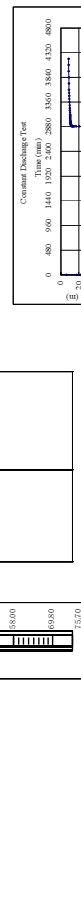
Constant Discharge Rate Pumping Test

Date	25-Sep-10
Static Water Level (m)	6.31
Duration (min)	2800
Q (m <sup>3</sup> /h)	11.00
D.W.L. (m)	66.69
Specific Capacity (liters/m <sup>3</sup> h)	0.27
Recovered D.W.L. After 1hr (m)	11.01
Recovery (%)	11.00
Recovery (%)	14.85
Recovery (%)	16.20



Step-Drawdown Test

Date	22-Sep-10			
Static Water Level (m)	5.93			
Step	1	2	3	4
Duration (min)	120	120	120	120
Q (m <sup>3</sup> /h)	11.00	18.33	20.83	25.33
D.W.L. (m)	54.58	56.50	46.37	41.28
Q's (m <sup>3</sup> /h)	11.00	18.33	20.83	25.33



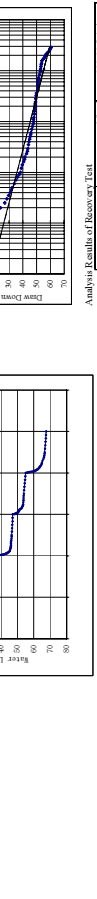
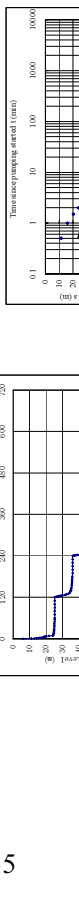
Analysis Results of Constant Discharge Rate Pumping Test

Q	14
d <sub>1</sub> (m)	55.9035
d <sub>2</sub> (m)	53.775
Screen Pipe Length (m)	11.80
L (m/min)	4.48
L (m <sup>3</sup> /h)	7.471546
K (m/min)	0.333246
K (m <sup>3</sup> /h)	6.333246



Analysis Results of Recovery Test

Q	14
d <sub>1</sub> (m)	57.7601
d <sub>2</sub> (m)	35.6076
Screen Pipe Length (m)	11.80
L (m/min)	1.14
L (m <sup>3</sup> /h)	1.851645
K (m/min)	0.99
K (m <sup>3</sup> /h)	1.572146



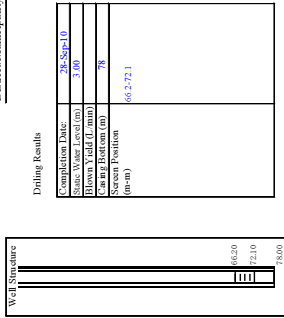
マバマ村 2号井

マバマ村 1号井

図-4 揚水試験結果 (5/6)

BH No. IG-07BH11 Date of Submission 28-Oct-08  
 Borehole No. 6752010 Contractor DDCA

Village Igumo  
 Ward Chibutava  
 District/Municipality Igunga

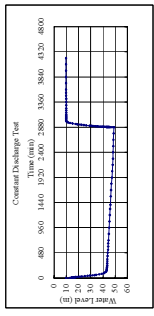


Driiling Results

Completion Date	<u>28-Sep-10</u>
Static Water Level (m)	<u>3.00</u>
Screen Depth (m)	<u>78</u>
Screen Position (m-m)	<u>66.2-72.1</u>

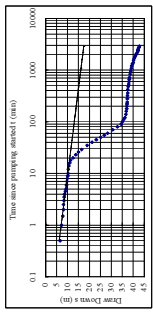
Constant Discharge Rate Pumping Test

Date	<u>27-Oct-10</u>
Static Water Level (m)	<u>28.90</u>
Duration (min)	<u>10.0</u>
Q (m <sup>3</sup> /h)	<u>16.67</u>
D.W.L. (m)	<u>49.93</u>
D.W.L. after 12 hr (m)	<u>44.51</u>
Specific Capacity (liters/m <sup>3</sup> h)	<u>332.3</u>
Recovered D.W.L. After 12hr (m)	<u>17.76</u>



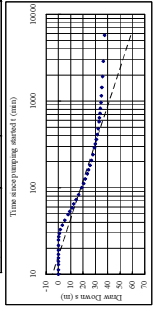
Analysis Results of Constant Discharge Rate Pumping Test

Q (m <sup>3</sup> /h)	<u>16.67</u>
del (m)	<u>10.12977 (dl (1mm))</u>
del (m)	<u>7.581151 (dl (2mm))</u>
Screen Pipe Length (m)	<u>5.30</u>
T (m <sup>3</sup> /m)	<u>1.7171543</u>
K (m/min)	<u>2.9102424</u>



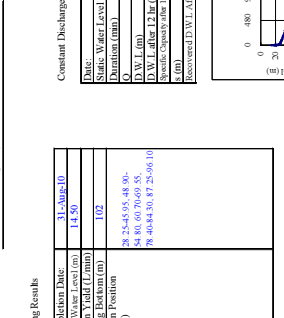
Analysis Results of Recovery Test

del (m)	<u>18.20985 (dl (1 mm))</u>
del (m)	<u>11.97952 (dl (2 mm))</u>
Screen Pipe Length (m)	<u>5.30</u>
T (m <sup>3</sup> /m)	<u>0.17182046</u>
K (m/min)	<u>0.6277 (Screen Length)</u>
K (m/s)	<u>3.7371467</u>



BH No. IG-07BH11 Date of Submission 28-Oct-08  
 Borehole No. 6752010 Contractor DDCA

Village Kichib  
 Ward Kichib  
 District/Municipality Tabori Urban

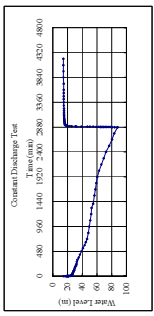


Driiling Results

Completion Date	<u>31-Mar-10</u>
Static Water Level (m)	<u>14.50</u>
Screen Depth (m)	<u>102</u>
Screen Position (m-m)	<u>28.25-45.95, 48.90-58.00, 59.69-58.70, 60.35-60.35, 61.20-66.16</u>

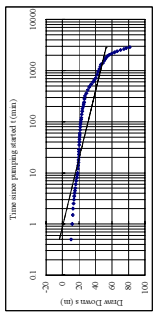
Constant Discharge Rate Pumping Test

Date	<u>5-Oct-10</u>
Static Water Level (m)	<u>28.90</u>
Duration (min)	<u>6.00</u>
Q (m <sup>3</sup> /h)	<u>10.0</u>
D.W.L. (m)	<u>57.57</u>
D.W.L. after 12 hr (m)	<u>40.19</u>
Specific Capacity (liters/m <sup>3</sup> h)	<u>73.52</u>
Recovered D.W.L. After 12hr (m)	<u>16.61</u>



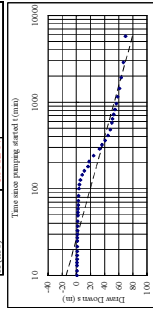
Analysis Results of Constant Discharge Rate Pumping Test

Q (m <sup>3</sup> /h)	<u>10.0</u>
del (m)	<u>15.94514 (dl (1mm))</u>
del (m)	<u>11.545332 (dl (2mm))</u>
Screen Pipe Length (m)	<u>47.20</u>
T (m <sup>3</sup> /m)	<u>1.21183046</u>
K (m/min)	<u>2.0787495</u>
K (m/s)	<u>4.2912421</u>



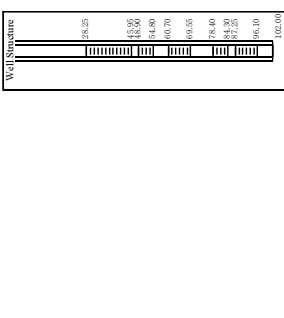
Analysis Results of Recovery Test

del (m)	<u>42.71212 (dl (1 mm))</u>
del (m)	<u>53.63489 (dl (2 mm))</u>
Screen Pipe Length (m)	<u>33.866274</u>
T (m <sup>3</sup> /m)	<u>0.570183046</u>
K (m/min)	<u>3.0049246</u>
K (m/s)	<u>1.9082607</u>



BH No. TL-008BH1 Date of Submission 28-Oct-08  
 Borehole No. 6632010 Contractor DDCA

Village Kichib  
 Ward Kichib  
 District/Municipality Tabori Urban

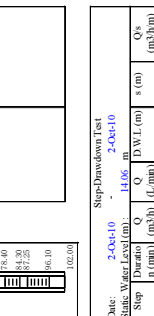


Driiling Results

Completion Date	<u>2-Oct-10</u>
Static Water Level (m)	<u>14.50</u>
Screen Depth (m)	<u>102</u>
Screen Position (m-m)	<u>28.25-45.95, 48.90-58.00, 59.69-58.70, 60.35-60.35, 61.20-66.16</u>

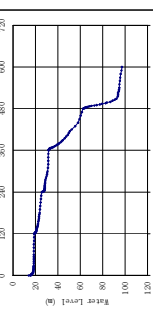
Step-Drawdown Test

Date	<u>2-Oct-10</u>
Static Water Level (m)	<u>14.50</u>
Step Duration (min)	<u>1.00</u>
Step D.W.L. (m)	<u>4.76</u>
Q (m <sup>3</sup> /h)	<u>11.35</u>
Q (m <sup>3</sup> /h)	<u>11.35</u>
Q (m <sup>3</sup> /h)	<u>17.64</u>
Q (m <sup>3</sup> /h)	<u>48.48</u>
Q (m <sup>3</sup> /h)	<u>83.22</u>



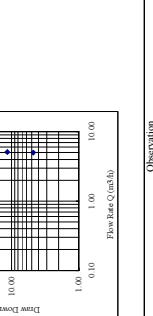
Analysis Results of Recovery Test

del (m)	<u>42.71212 (dl (1 mm))</u>
del (m)	<u>53.63489 (dl (2 mm))</u>
Screen Pipe Length (m)	<u>33.866274</u>
T (m <sup>3</sup> /m)	<u>0.570183046</u>
K (m/min)	<u>3.0049246</u>
K (m/s)	<u>1.9082607</u>



Analysis Results of Recovery Test

del (m)	<u>42.71212 (dl (1 mm))</u>
del (m)	<u>53.63489 (dl (2 mm))</u>
Screen Pipe Length (m)	<u>33.866274</u>
T (m <sup>3</sup> /m)	<u>0.570183046</u>
K (m/min)	<u>3.0049246</u>
K (m/s)	<u>1.9082607</u>



イグモ村 1号井

カコラ村 1号井

図-4 揚水試験結果 (6/6)