

7. その他の資料・情報

- (1) 試掘・揚水試験結果一覧表
- (2) 水質分析結果一覧表
- (3) 物理探査位置図
- (4) 物理探査解析図（比抵抗二次元・電磁探査・ラドン探査）
- (5) 試掘結果図
- (6) 揚水試験結果図

表-1 試掘・揚水試験結果一覧表

No.	Drilling No.	Registration No.	District	Village	Drilling			Remarks	
					Date from	Date to	Casing Depth (m)		
1	NZ-047BH1	672/2010	Nzega	Isanga	2010/9/24	2010/9/27	85	80.9	
2	NZ-047BH2	673/2010	Nzega	Isanga	2010/9/27	2010/9/28	80	78.0	
3	SK-028BH1	670/2010	Sikonge	Usunga	2010/9/14	2010/9/17	98	96.0	
4	SK-028BH2	671/2010	Sikonge	Usunga	2010/9/18	2010/9/22	150	137.5	
5	SK-037BH1	-	Sikonge	Mpombwe	2010/9/10	2010/9/11	79	-	Back filled
6	SK-037BH2	669/2010	Sikonge	Mpombwe	2010/9/12	2010/9/13	92	91.0	
7	TR-054BH1	-	Tabora Rural	Mpumbuli	2010/8/17	2010/8/17	50	-	Back filled
8	TR-054BH2	662/2010	Tabora Rural	Mpumbuli	2010/8/18	2010/8/19	130	125.0	
9	TR-069BH1	664/2010	Tabora Rural	Mabama	2010/9/1	2010/9/9	79	75.7	
10	TR-069BH2	665/2010	Tabora Rural	Mabama	2010/9/10	2010/9/13	82	63.7	
11	TR-069BH3	-	Tabora Rural	Mabama	2010/9/14	2010/9/16	86	-	Back filled
12	TR-098BH1	-	Tabora Rural	Ufuluma	2010/9/19	2010/9/22	86	-	Back filled
13	TU-008BH1	663/2010	Tabora Municipality	Kakola	2010/8/26	2010/8/31	108	102.0	
14	IG-007BH1	675/2010	Igunga	Iguno	2010/9/24	2010/9/28	80	78.0	
15	IG-012BH1	-	Igunga	Buhekela	2010/9/29	2010/10/6	70	-	Back filled
16	IG-033BH1	-	Igunga	Kagongwa	2010/9/29	2010/10/1	82	-	Back filled

No.	Drilling No.	Registration No.	District	Village	Step Draw Down Test			Constant discharge Test					Water Quality Analysis	Well Head Type	Resulted Status	
					Date From	Date To	SWL (m)	Max. Discharge Rate (m ³ /h)	Max DWL (m)	Date From	Date To	SWL (m)				Discharge Rate (m ³ /h)
1	NZ-047BH1	672/2010	Nzega	Isanga	2010/10/17	2010/10/17	1.74	4.5	74.20	2010/10/17	2010/10/19	2.82	3.7	63.55	C/S	Water Source for Level -2
2	NZ-047BH2	673/2010	Nzega	Isanga	2010/10/20	2010/10/20	5.52	4.0	53.09	2010/10/20	2010/10/22	6.64	3.0	42.98	C/S	Water Source for Level -2
3	SK-028BH1	670/2010	Sikonge	Usunga	-	-	-	-	-	2010/10/12	2010/10/12	46.20	0.3	93.90	C/S	Observation Well
4	SK-028BH2	671/2010	Sikonge	Usunga	2010/10/27	2010/10/27	17.39	1.2	60.23	2010/9/28	2010/9/30	17.24	0.8	117.29	C/S	Observation Well
5	SK-037BH2	669/2010	Sikonge	Mpombwe	-	-	-	-	-	2010/10/15	2010/10/15	59.21	0.3	85.95	C/S	Observation Well
6	TR-054BH2	662/2010	Tabora Rural	Mpumbuli	2010/10/6	2010/10/7	33.04	9.8	107.69	2010/10/7	2010/10/13	33.09	9.0	101.38	C/S	Water Source for Level -2
7	TR-069BH1	664/2010	Tabora Rural	Mabama	2010/9/22	2010/9/23	5.93	15.0	67.53	2010/9/23	2010/9/25	6.21	14.0	66.69	C/S	Water Source for Level -2
8	TR-069BH2	665/2010	Tabora Rural	Mabama	2010/10/14	2010/10/15	11.68	1.2	60.23	2010/10/16	2010/10/16	11.20	0.8	60.20	C/S	Observation Well
9	TU-008BH1	663/2010	Tabora Municipality	Kakola	2010/10/2	2010/10/2	14.06	7.7	97.28	2010/10/3	2010/10/5	14.35	6.0	87.87	C/S	Water Source for Level -2
10	IG-007BH1	675/2010	Igunga	Iguno	2010/10/27	2010/10/27	9.61	1.1	76.57	2010/10/27	2010/10/27	9.82	1.0	49.03	C/S	Observation Well

C/S = Concrete and Steel Pipe

表-2 水質分析結果一覧表

Physical & Chemical Parameters	Village Name		Isanga	Isanga	Usunga	Usunga	Mpombwe	Mpumbuli	Mabama	Mabama	Kakola	Igumo
	Drilling No.	Registration No.	NZ-047BH1	SK-028BH1	SK-028BH2	SK-028BH2	SK-037BH2	TR-054BH2	TR-069BH1	TR-069BH2	TU-008BH1	IG-007BH1
Turbidity			0.99	1575	671/2010	671/2010	942	0.861	3.81	0.644	0.964	0.44
pH			7.6	7.4	7.8	7.6	7.6	7.1	7.1	7.2	7.7	7.8
Colour	mgPt/L		NIL	Pale brown	NIL	NIL	NIL	NIL	NIL	NIL	NIL	NIL
Electrical Conductivity	mS/cm		864	937	268	835	1370	1183	1183	1181	1200	1038
Total Filterable residue*4	mg/l		475.2	468	134	459.2	685	592	592	590	600	570.9
Odour	TON		NIL	NIL	NIL	NIL	NIL	NIL	NIL	NIL	NIL	NIL
Taste			NO	NO	NO	NO	NO	NO	NO	NO	NO	NO
Nitrate	mgNo3/l		0.479	1	0.9	0.471	0.5	0.29	1.76	0.02	0.02	0.291
Nitrite	mgNO2/L		0.01	0.6	0.01	0.02	0.01	0.01	0.02	0.02	0.02	0.002
Phenolphalein Alkalinity	mgCaCo3/L		NIL	NIL	NIL	NIL	NIL	NIL	NIL	NIL	NIL	NIL
Total Alkalinity	mgCaCo3/L		400	450	50	200	250	500	350	300	300	400
Non Carbonate Hardness	mgCaCo3/L		NIL	NIL	75	25	NIL	NIL	NIL	NIL	125	NIL
Total Hardness	mgCaCo3/L		300	200	125	225	200	325	200	425	425	250
Arsenic	mg/L		NIL	NIL	NIL	NIL	NIL	NIL	NIL	NIL	NIL	NIL
Bicarbonate (HCO3)	mgCo3/L		300	200	50	200	200	325	200	300	300	250
Calcium	mg/l		80	60	40	50	50	100	70	160	160	60
Magnesium	mg/l		24.3	12.16	6.08	24.3	18.24	18.24	6.08	6.08	6.08	24.32
Manganese	mg/l		NIL	0.05	NIL	1.5	NIL	NIL	NIL	NIL	NIL	NIL
Zinc	mg/l		NIL	NIL	NIL	NIL	NIL	NIL	NIL	NIL	NIL	NIL
Iron	mg/l		NIL	0.64	NIL	3.02	0.02	NIL	0.02	0.02	NIL	NIL
Chloride	mg/l		88.6	194.97	53.17	88.6	212.7	124.07	141.8	159.5	159.5	70.9
Sulphate (SO4)	mg/l		NIL	8	9.6	1.7	250	NIL	70	48	48	18.72
Nickel	mg/l		NIL	NIL	NIL	NIL	NIL	NIL	NIL	NIL	NIL	NIL
Sodium	mg/l		60.2	119.37	3.22	86.9	220.5	121.9	176.41	79.81	79.81	121.4
Potassium	mg/l		1.5	7.7	2.2	3.3	4.9	1.7	6	2.1	2.1	4.6
Lead (Pb)	mg/l		NIL	NIL	NIL	NIL	NIL	NIL	NIL	NIL	NIL	NIL
Fluoride	mg/l		2.4	1.46	2.53	1.1	3.95	1.5	2.24	1.61	1.61	7
Copper (Cu)	mg/l		NIL	0.001	NIL	0.001	0.001	NIL	0.002	NIL	NIL	NIL
Ammonium (NH3+ NH4)	mg/l		NIL	NIL	0.001	NIL	NIL	NIL	NIL	NIL	NIL	NIL
Orthophosphate	mg/l		NIL	NIL	NIL	NIL	NIL	NIL	0.001	NIL	NIL	NIL
Temperature	°C		28.6	26.5	26	28.8	28	26	26	25	25	28.7
Cadmium (Cd)	mg/l		NIL	NIL	NIL	NIL	NIL	NIL	NIL	NIL	NIL	NIL
BACTERIOLOGICAL PARAMETERS	Count/100mL											
Total Coliform			NIL	NIL	NIL	NIL	NIL	NIL	NIL	NIL	NIL	NIL
Escherichia coli			NIL	NIL	NIL	NIL	NIL	NIL	NIL	NIL	NIL	NIL

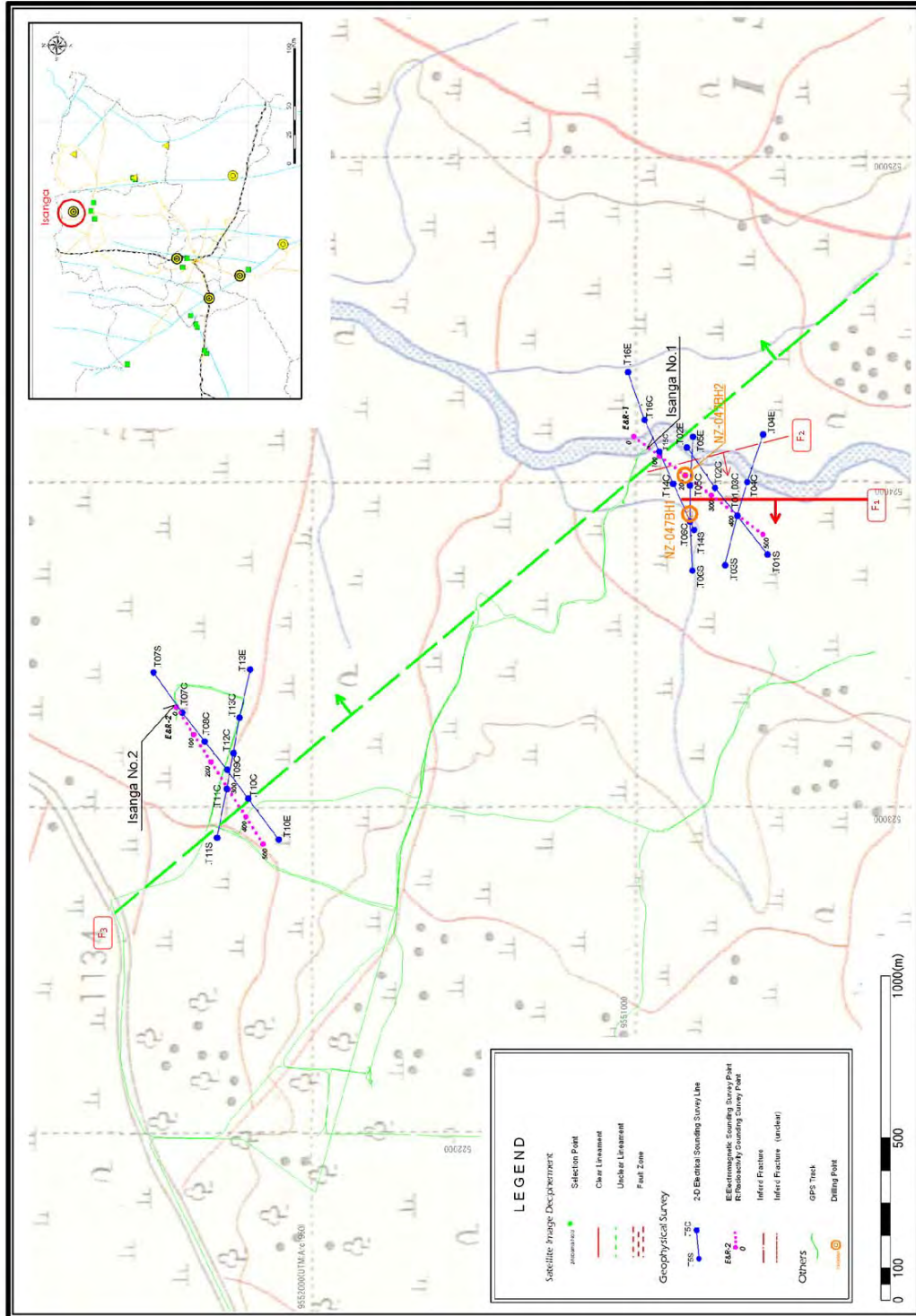


図-1 物理探査測線位置図 1/12 (レベル 2:イサンガ村)

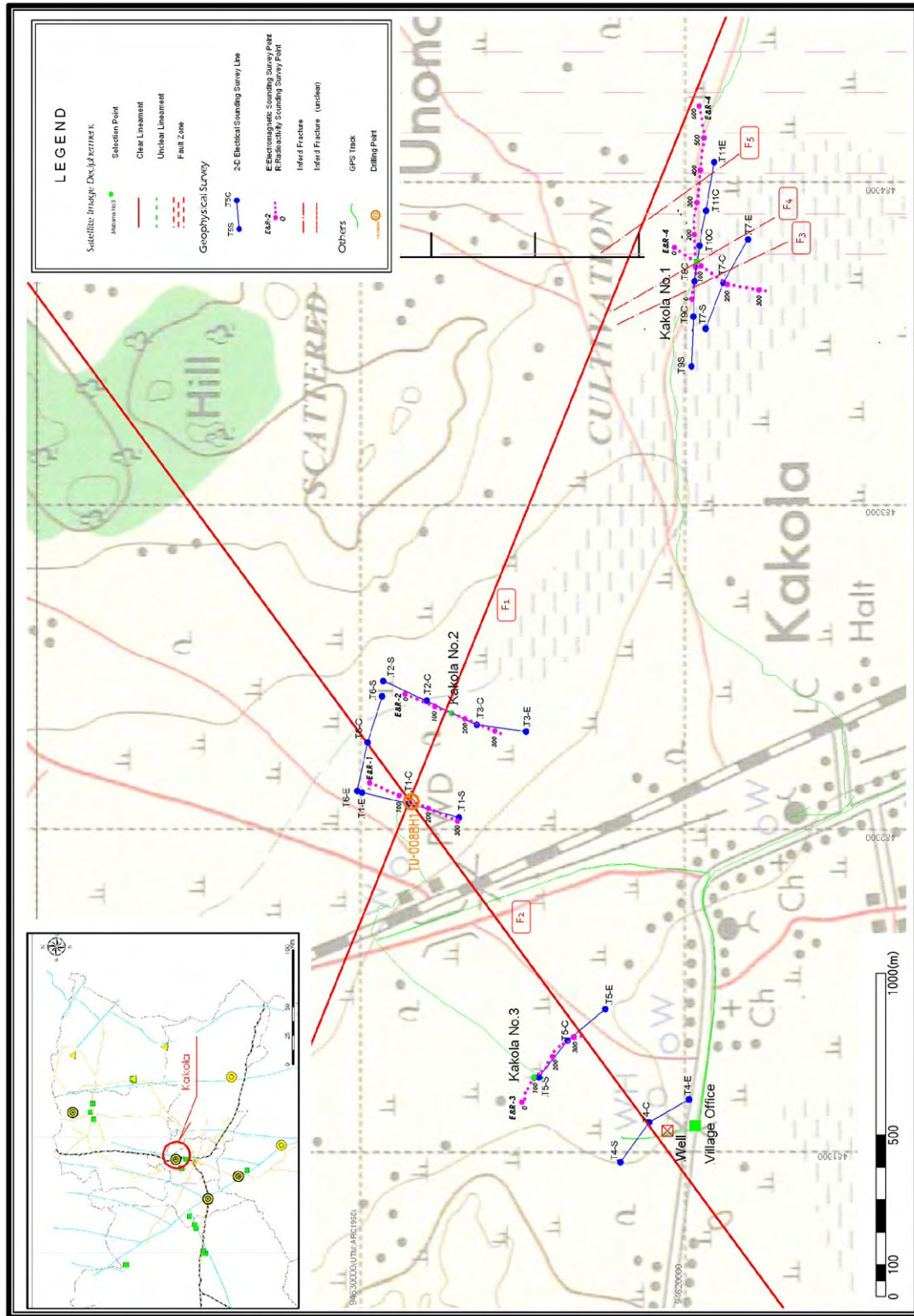


図-1 物理探査測線位置図 2/12 (レベル 2:カコラ村)

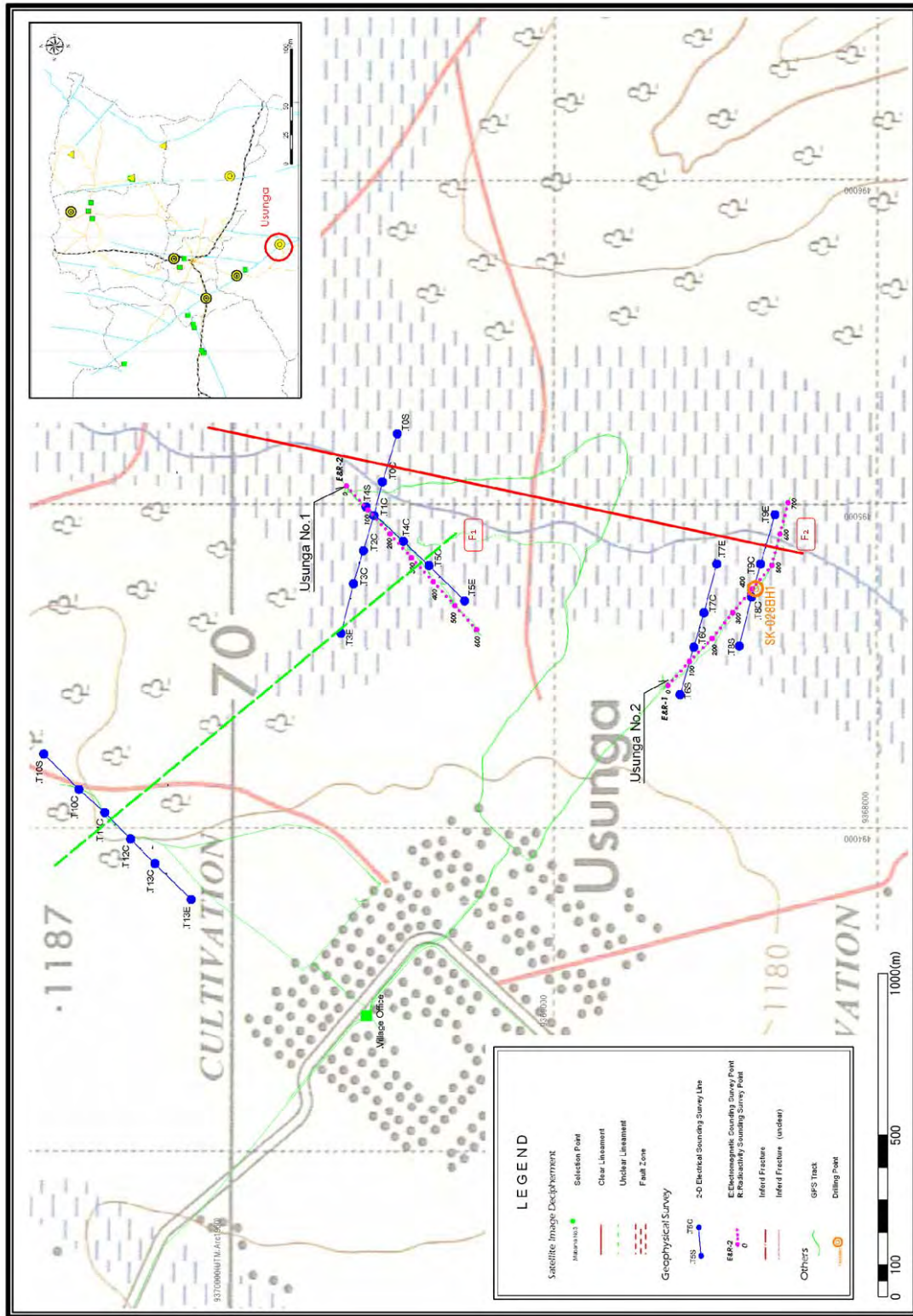


図-1 物理探査測線位置図 3/12 (レベル2:ウスンガ村 1/2)

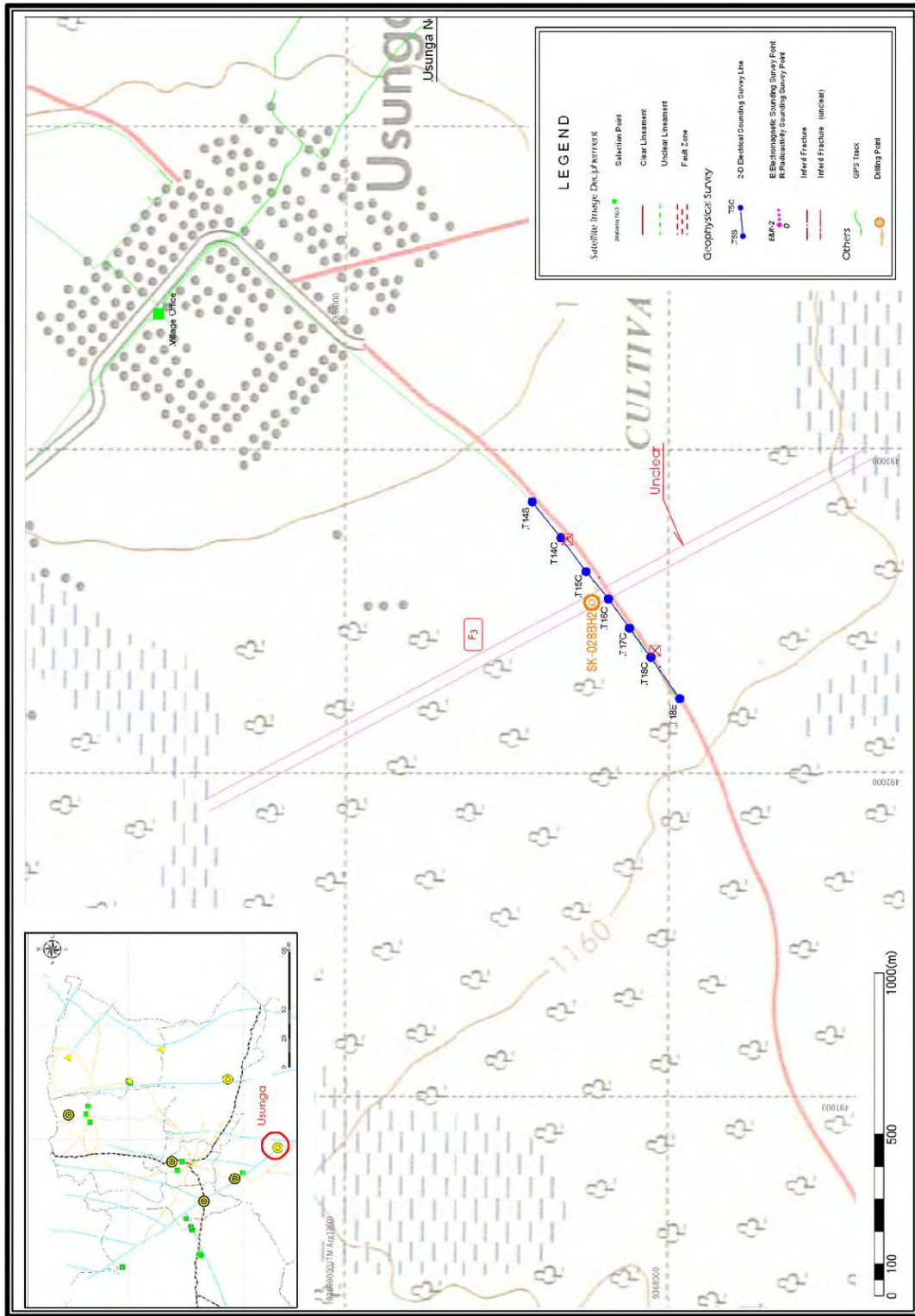


図-1 物理探査測線位置図 4/12 (レベル 2:ウスンガ村 2/2)

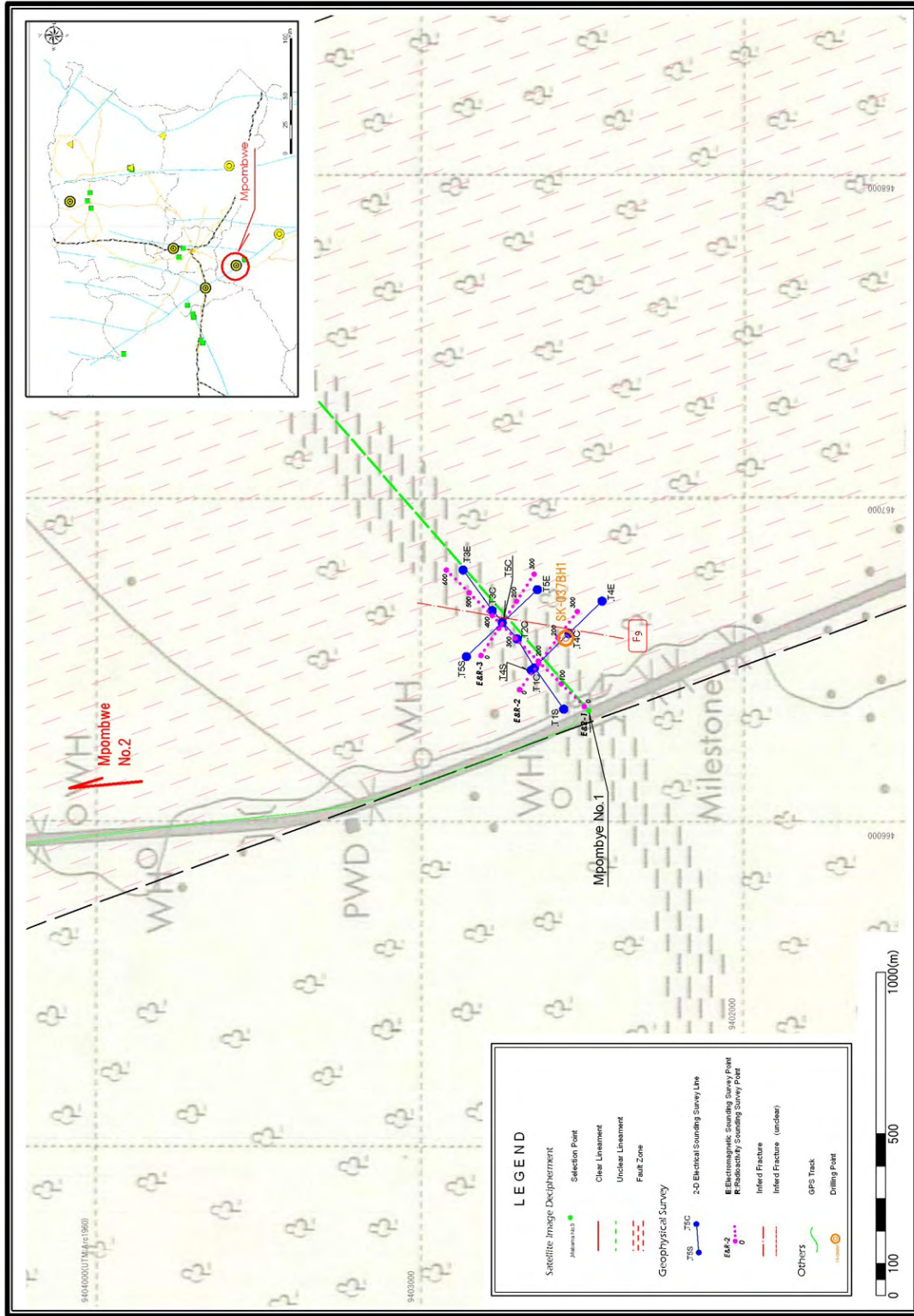


図-1 物理探査測線位置図 5/12 (レベル 2: ムポンブウェ村 1/2)

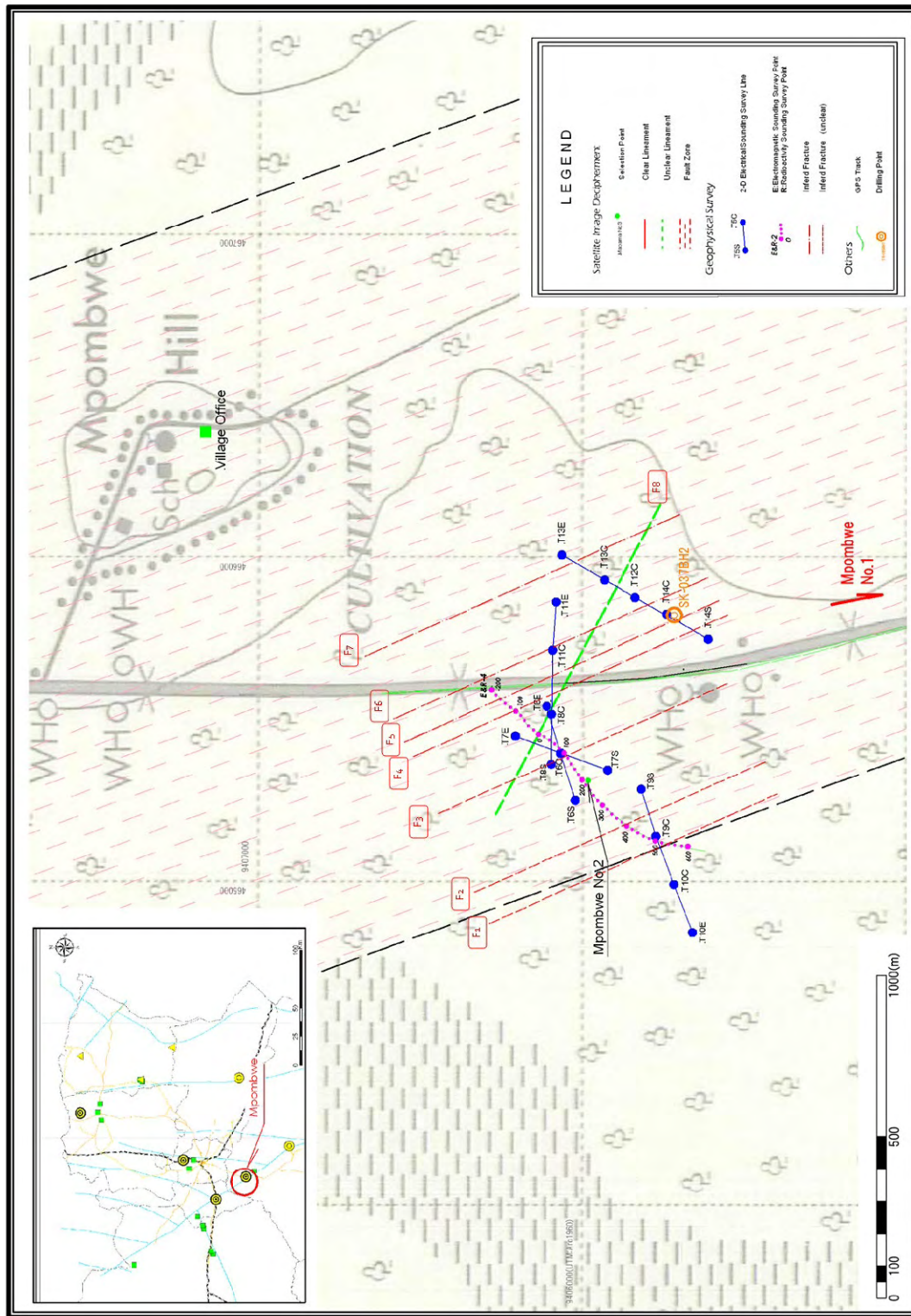


図-1 物理探査測線位置図 6/12 (レベル 2: ムポンブウェ村 2/2)

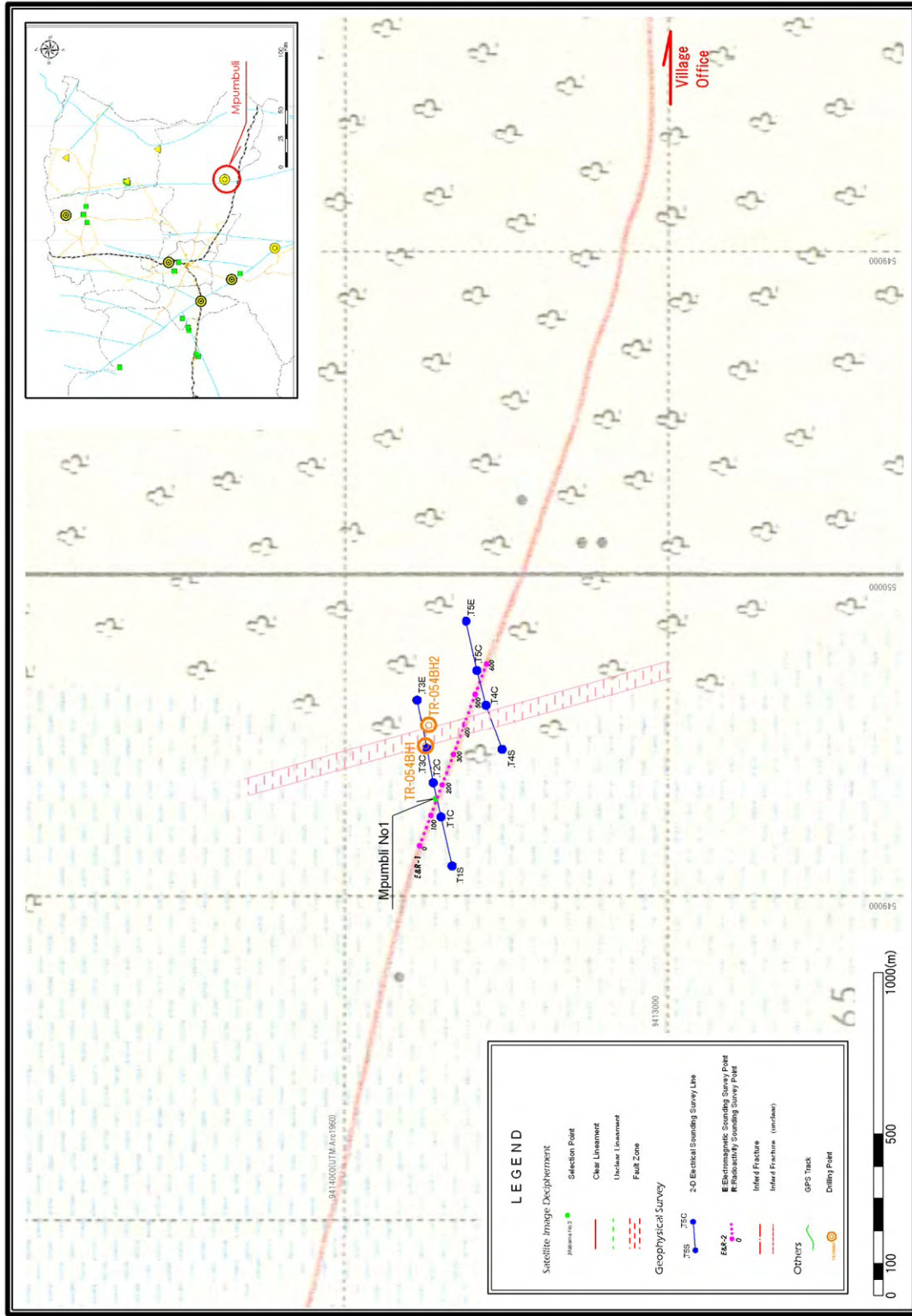


図-1 物理探査測線位置図 7/12 (レベル 2:ムンプンブリ村)

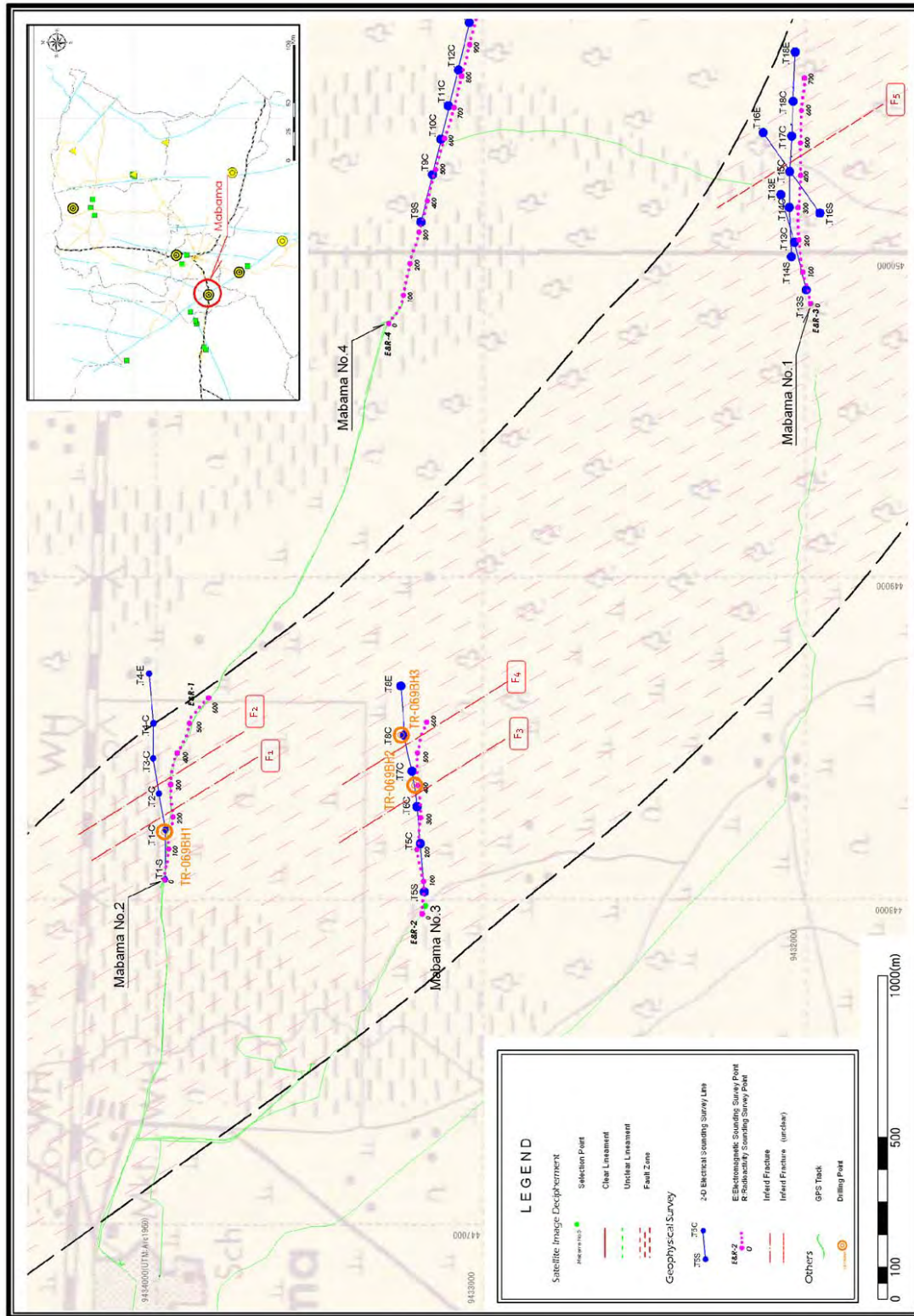


図-1 物理探査測線位置図 8/12 (レベル 2:マバマ村)

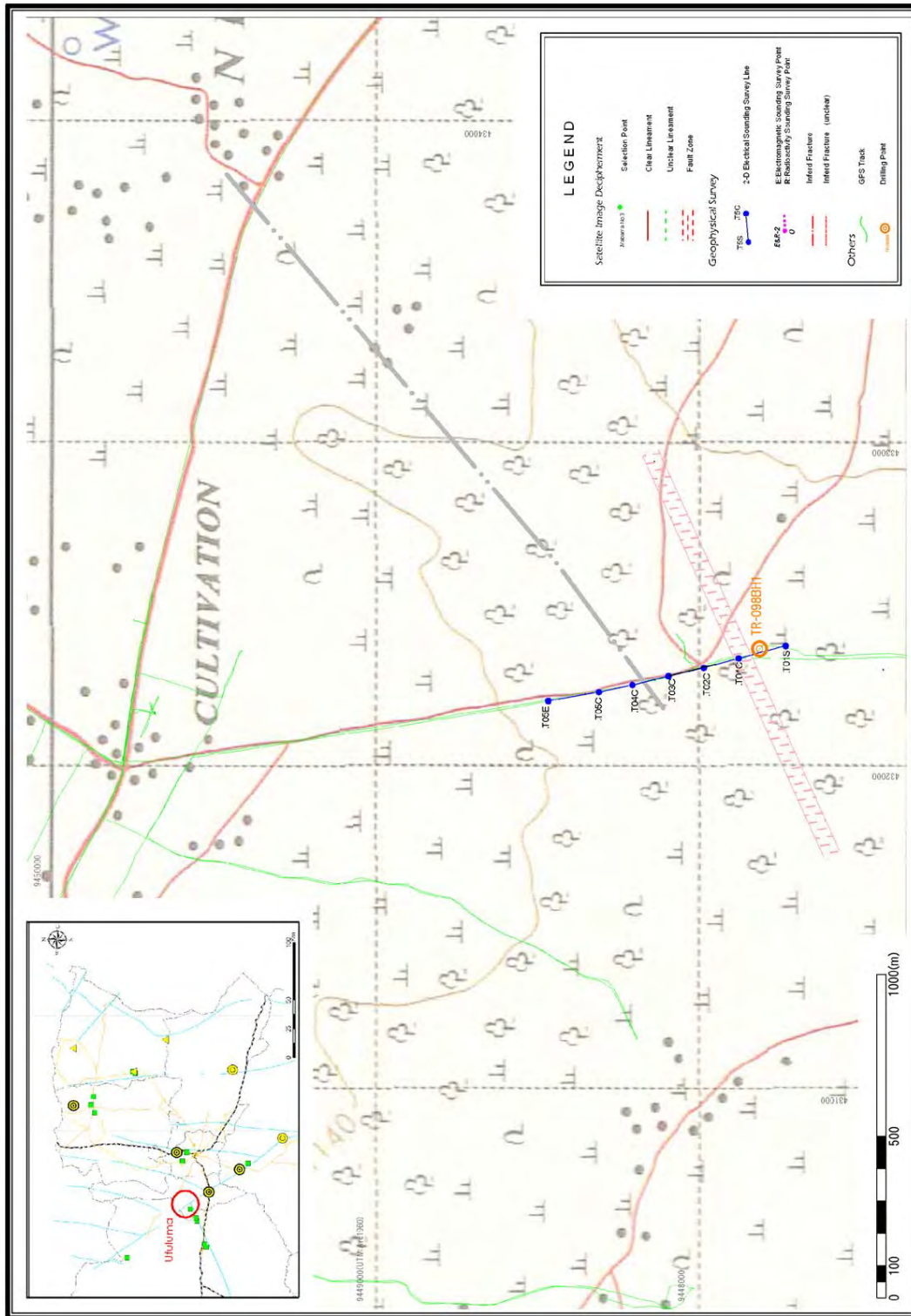


図-1 物理探査測線位置図 9/12 (レベル 2:ウフルマ村)

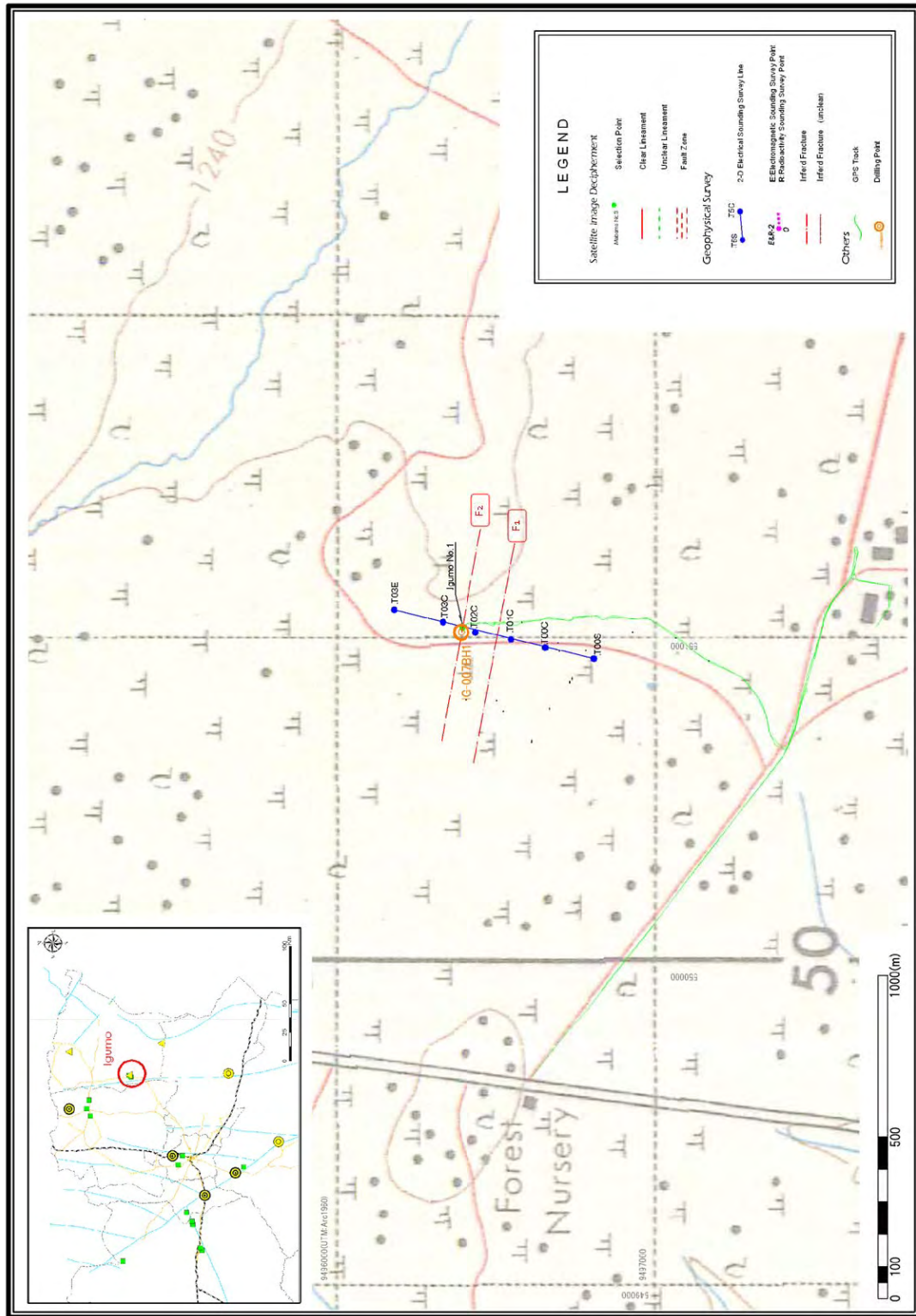


図-1 物理探査測線位置図 10/12 (水質確認サイト:イグモ村)

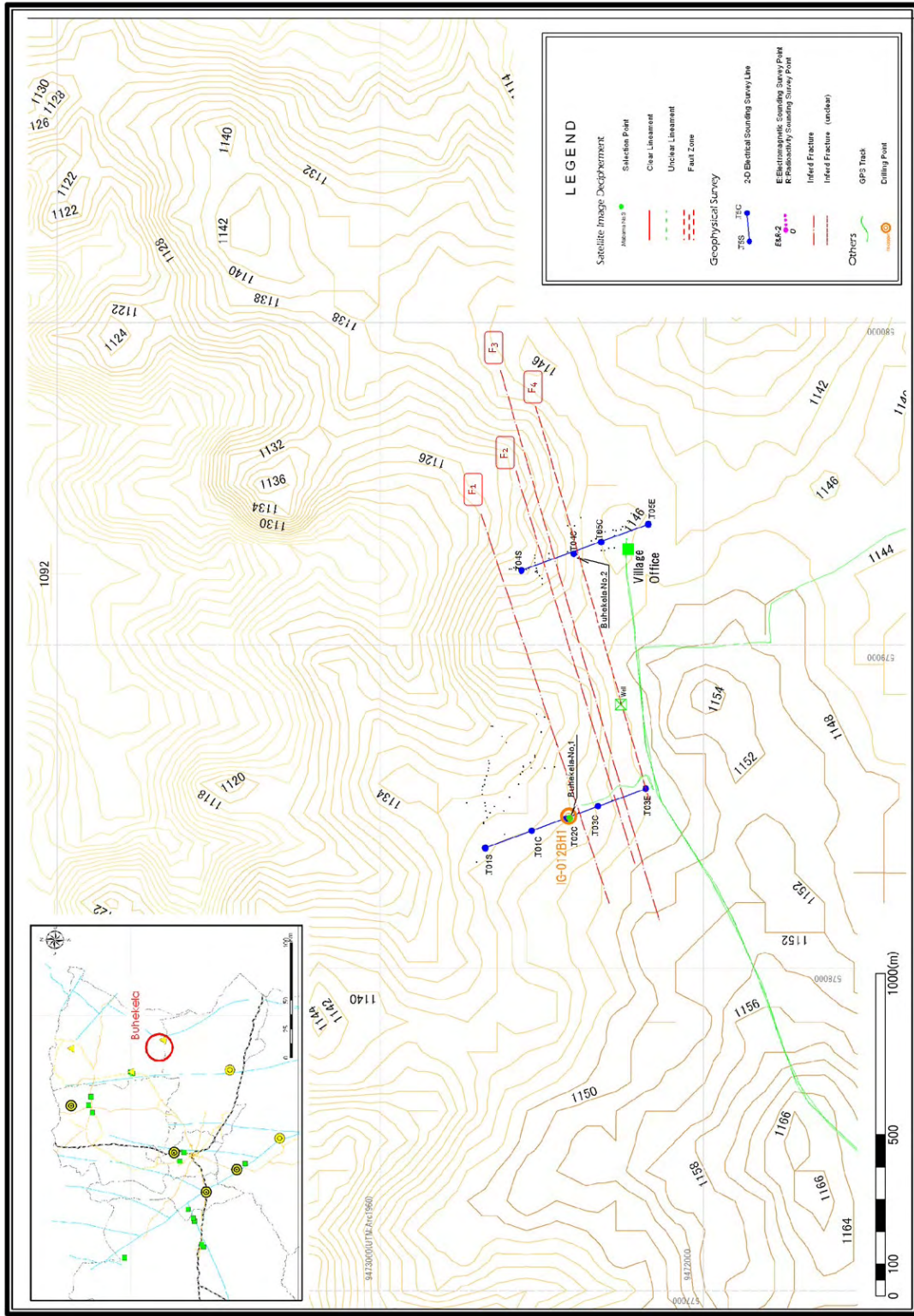
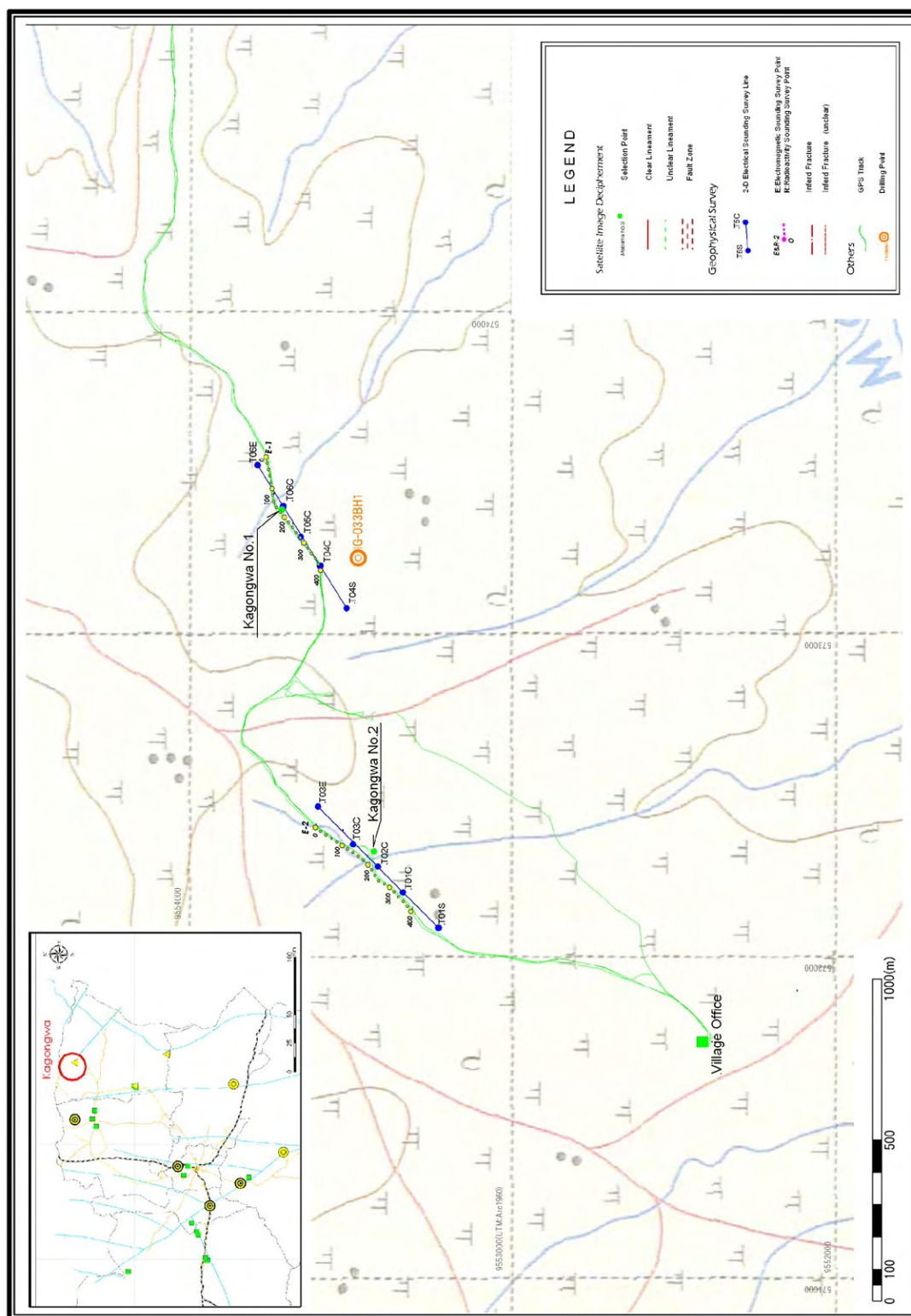


図-1 物理探査測線位置図 11/12 (水質確認サイト:ブヘケラ村)



図・1 物理探査測線位置図 12/12 (水質確認サイト:カゴングワ村)