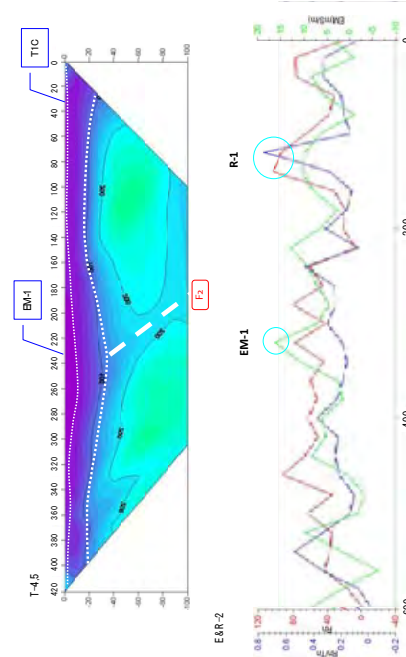
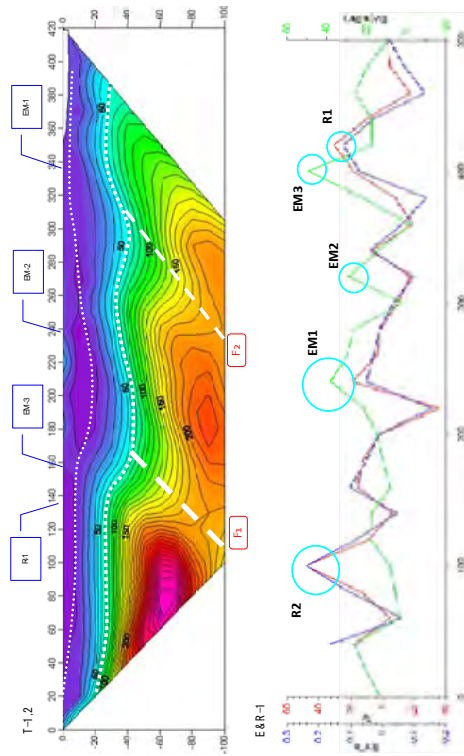


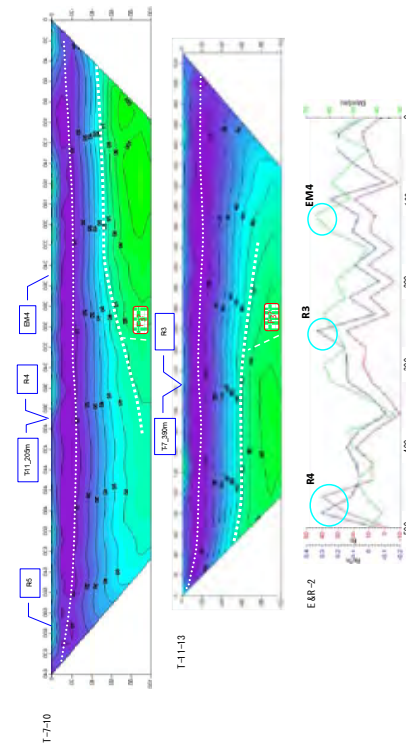
レベル 2: イサングガ村 探査 No.1 (2/2)



レベル 2: ウスングガ村 探査 No.1 (1/2)

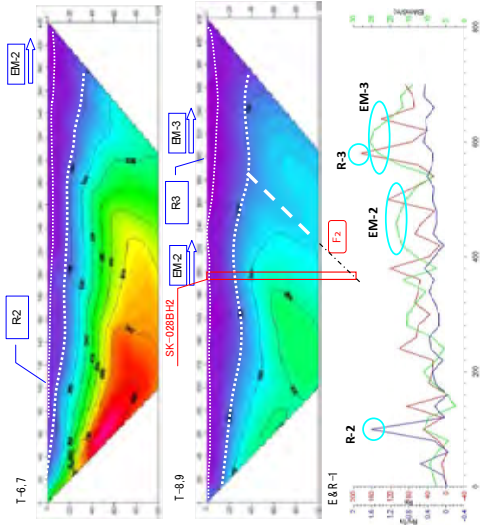


レベル 2: イサングガ村 探査 No.1 (1/2)

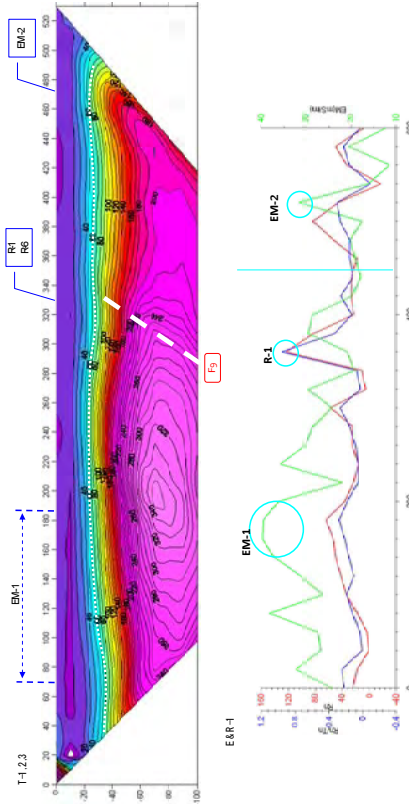


レベル 2: イサングガ村 探査 No.2

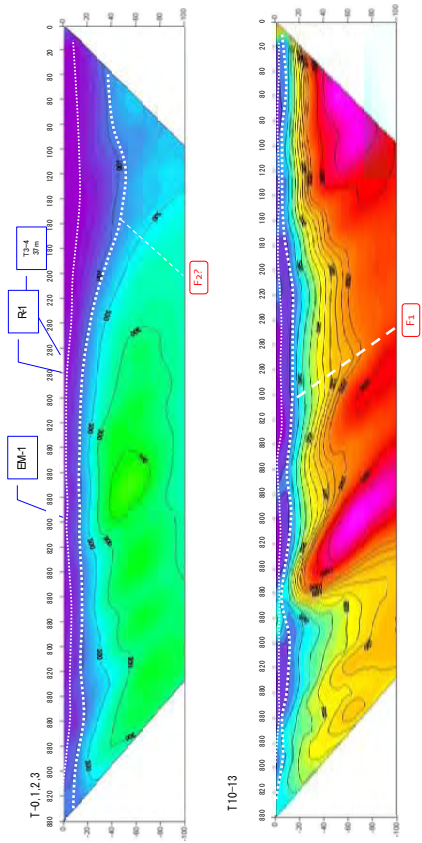
図-2 比抵抗二次元断面図・EMプロファイル・ラドンプロファイル (1/8)



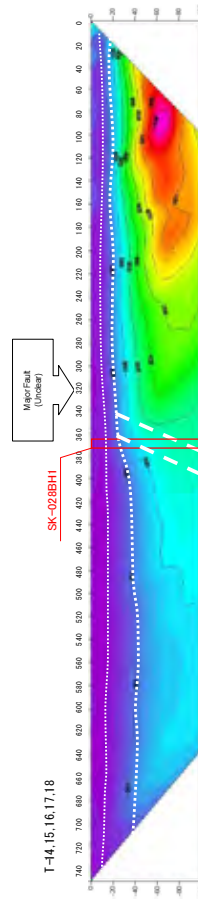
レベル 2: ウスンガ村 探査 No.2



レベル 2: ムポンブウエ村 探査 No.1 (1/3)

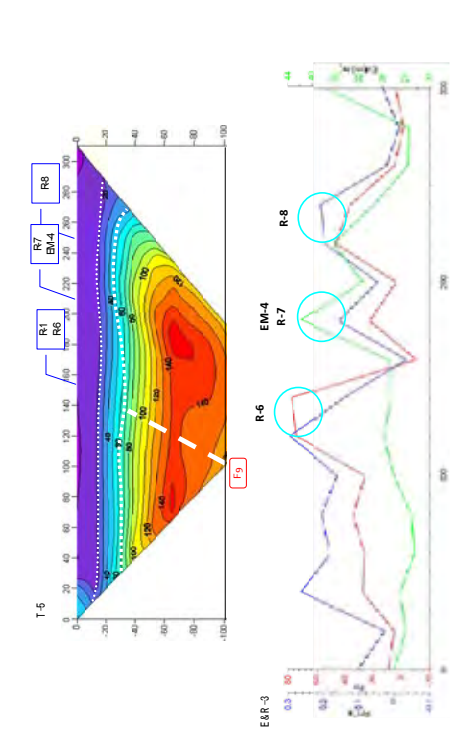


レベル 2: ウスンガ村 探査 No.1 (2/2)



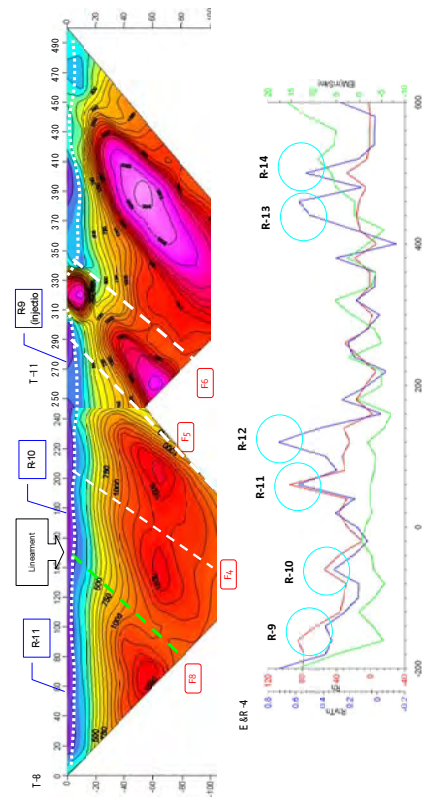
レベル 2: ウスンガ村 探査南西部

図-2 比抵抗二次元断面図・EM プロファイル・ラドンプロファイル (2/8)

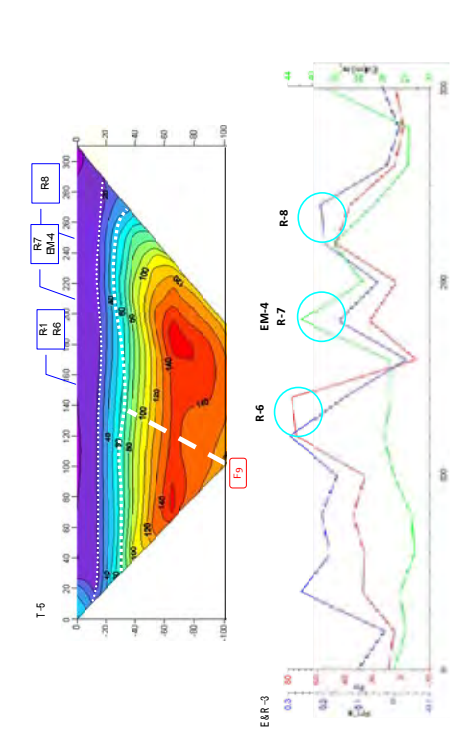


レベル 2: ムポンブウェ村 探査 No.1 (2/3)

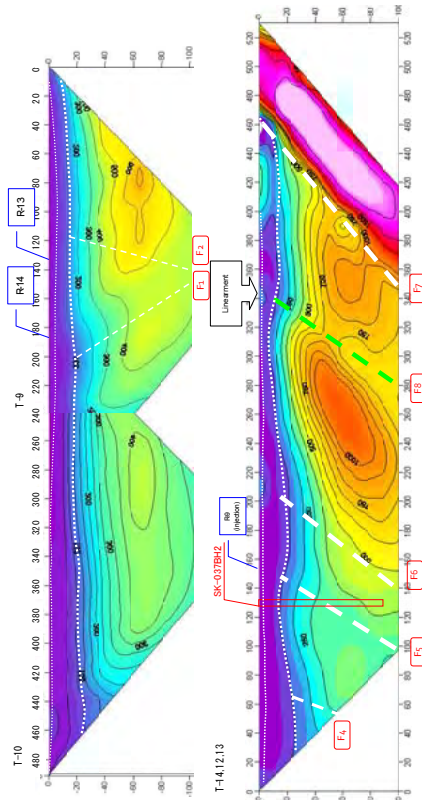
A7-17



レベル 2: ムポンブウェ村 探査 No.2 (1/3)



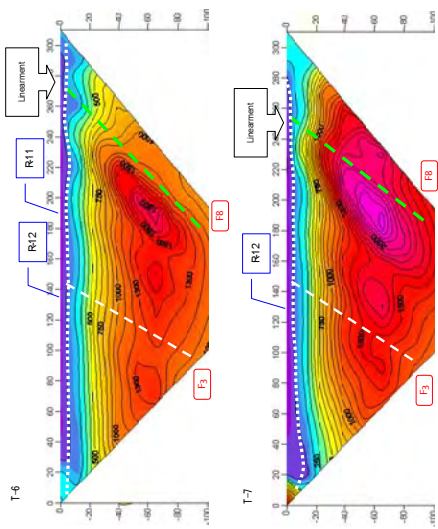
レベル 2: ムポンブウェ村 探査 No.1 (3/3)



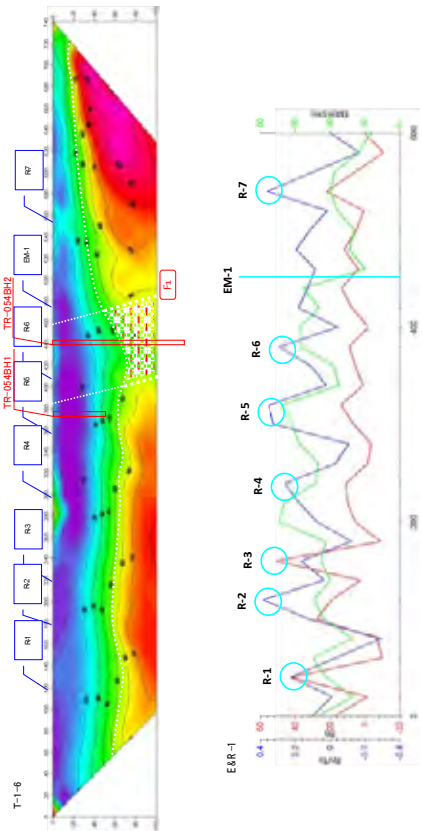
レベル 2: ムポンブウェ村 探査 No.2 (2/3)

図-2 比抵抗二次元断面図・EM プロファイル・ラドンプロファイル (3/8)

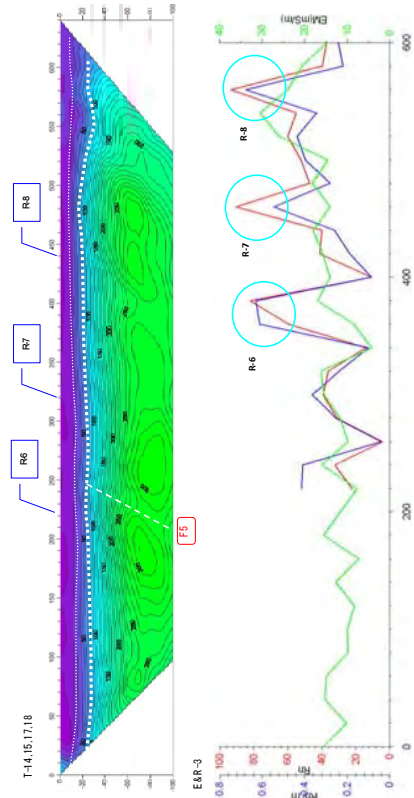




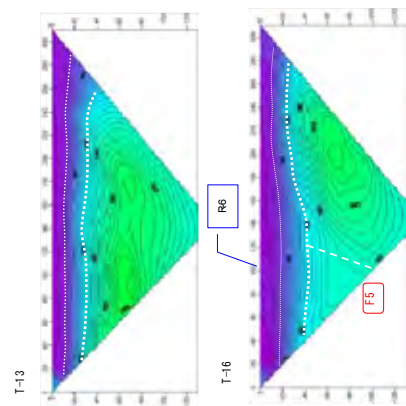
レベル 2: ムポンブウェ村 探査 No.2 (3/3)



レベル 2: ムポンブグリ村 探査 No.1

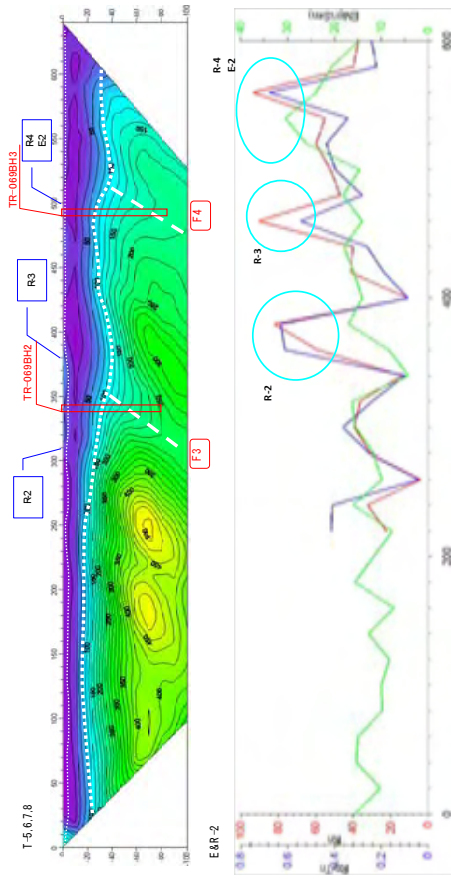


レベル 2: マバママ村 探査 No.1 (1/2)

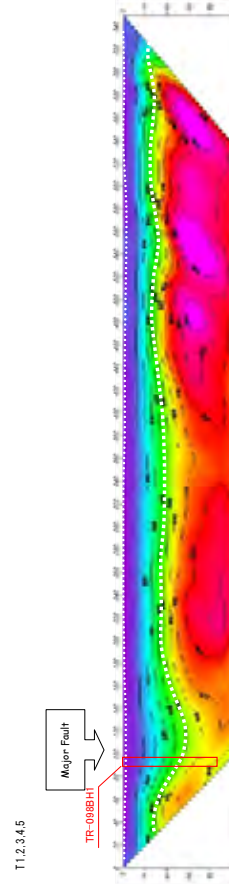


レベル 2: マバママ村 探査 No.1 (2/2)

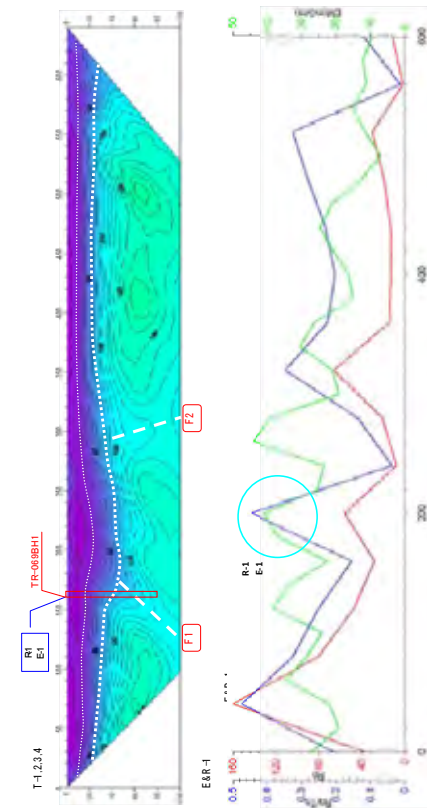
図-2 比抵抗二次元断面図・EMプロファイル・ラドンプロファイル (4/8)



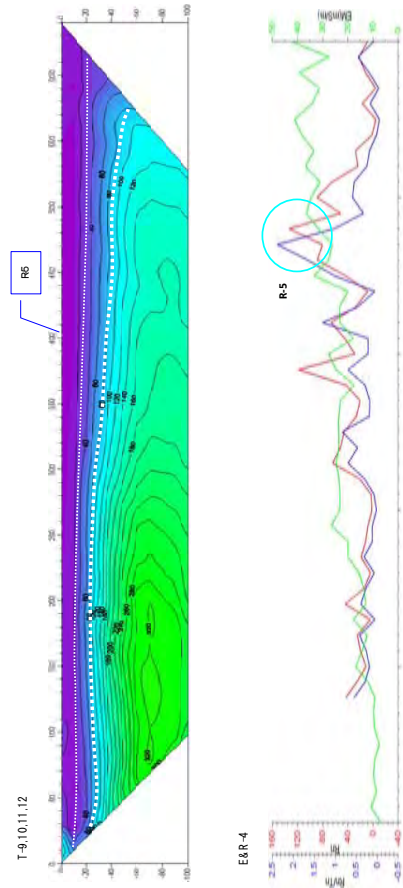
レベル 2: マバマ村 探査 No.3



レベル 2: ウフルマ村

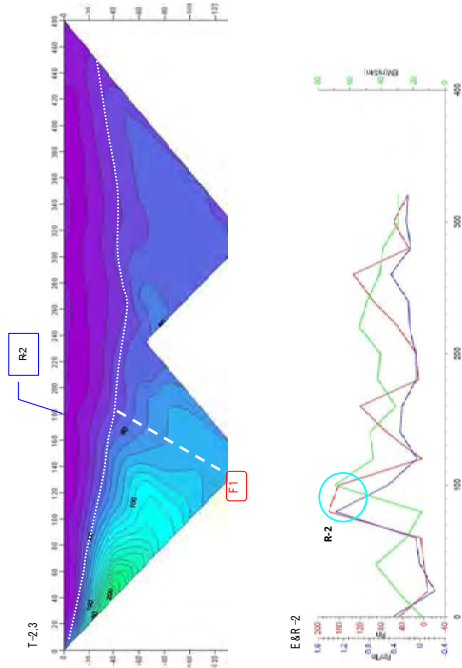


レベル 2: マバマ村 探査 No.2

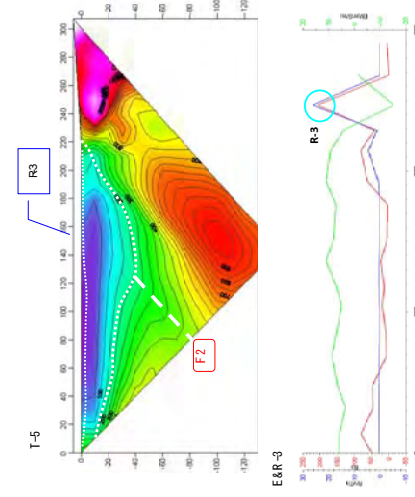


レベル 2: マバマ村 探査 No.4

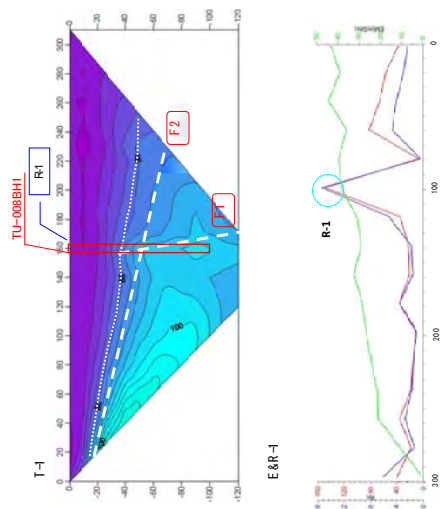
図-2 比抵抗二次元断面図・EMプロファイル・ラドンプロファイル (5/8)



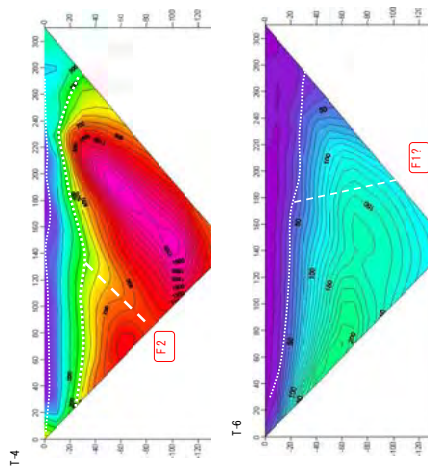
レベル 2: カコラ村 探査 No.2 (2/2)



レベル 2: カコラ村 探査 No.3 (2/2)

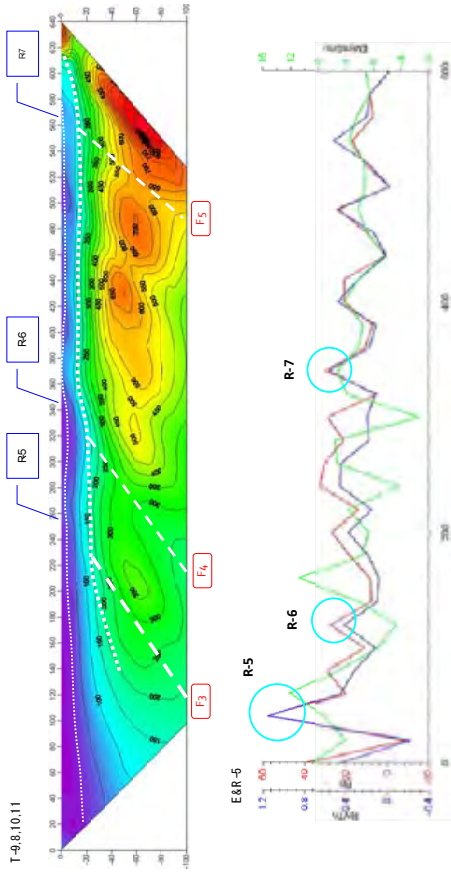


レベル 2: カコラ村 探査 No.2 (1/2)

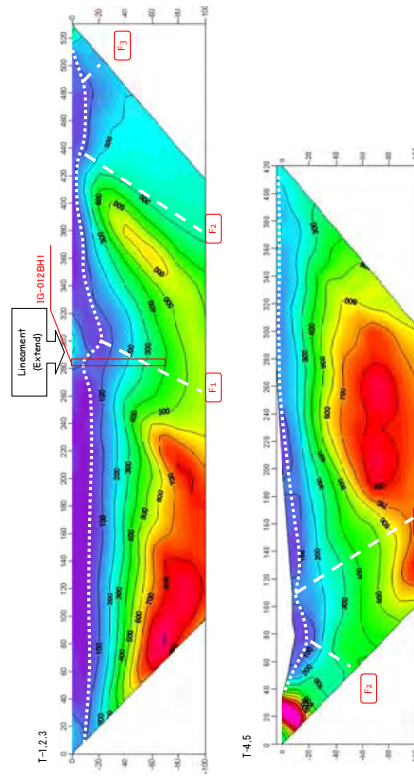


レベル 2: カコラ村 探査 No.2,3 (1/2)

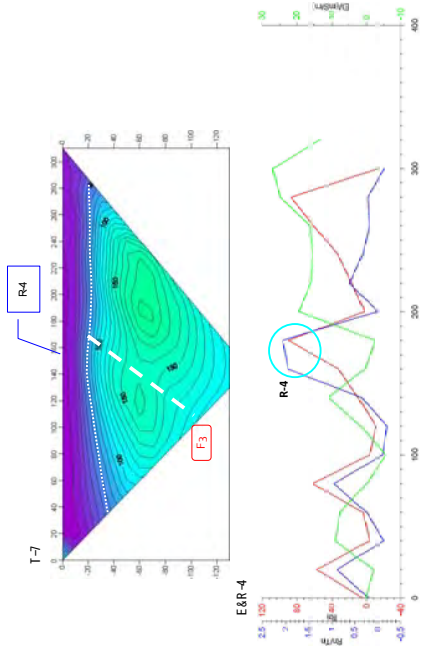
図-2 比抵抗二次元断面図・EMプロファイル・ラドンプロファイル (6/8)



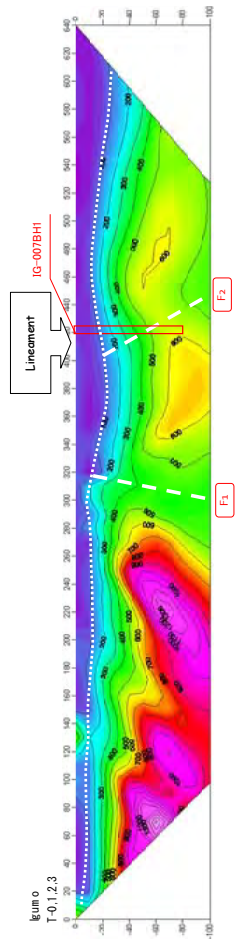
レベル2: カコラ村 探査 No.1 (2/2)



水質確認サイト: ブヘケラ村



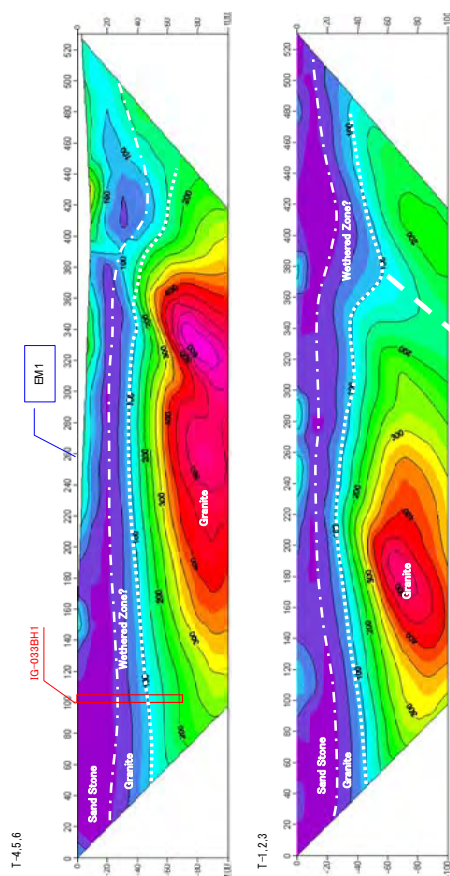
レベル2: カコラ村 探査 No.1 (1/2)



水質確認サイト: イグモ村

図-2 比抵抗二次元断面図・EMプロファイル・ラドンプロファイル (7/8)



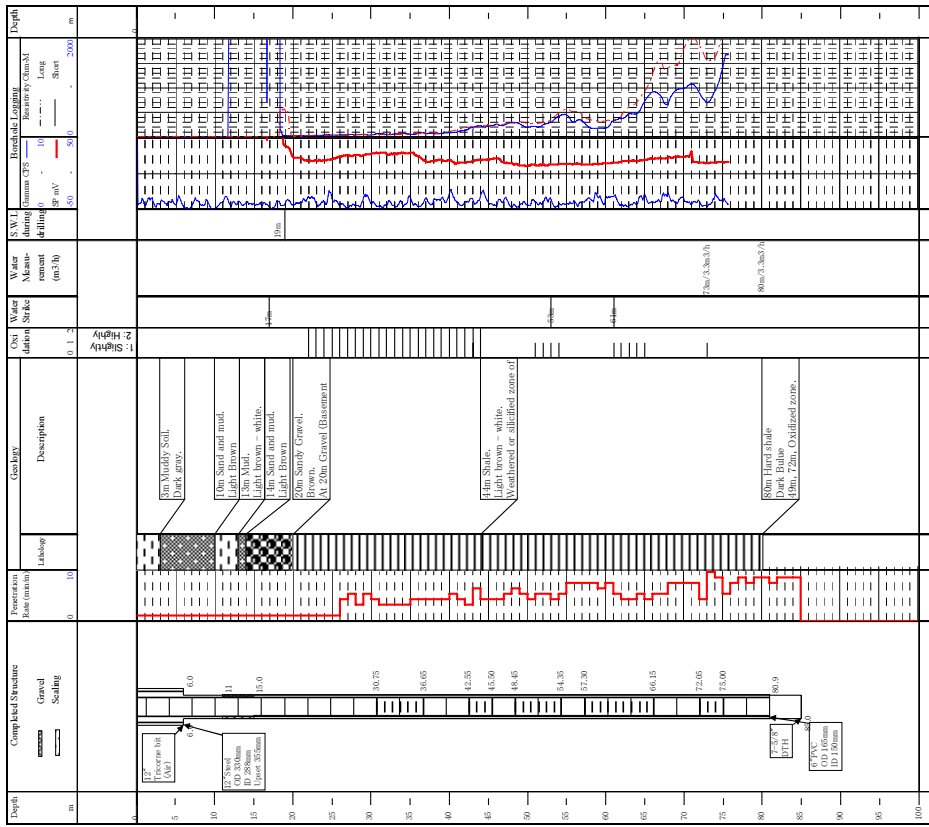


水質確認サイト：カゴングワ村

図-2 比抵抗二次元断面図・EM プロファイル・ラドンプロファイル (8/8)

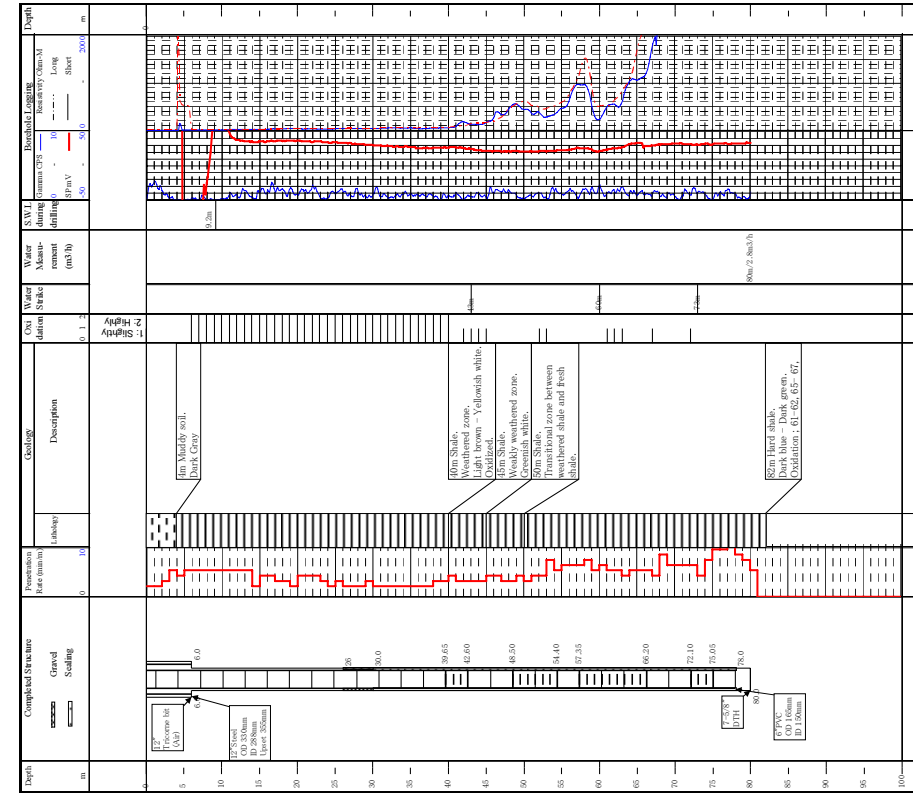


Drilling No. **NZ-047BH1** Registration No. **672,2010** Date of Commencement **24-Sep-10**  
 Village **Isanga** GPS Coordinates (Are 1960): **27-Sep-10**  
 Ward **Lusu** X Y Contractor **DDCA**  
 District/Municipality **Nzega** **3.6M0523911** **9550830** Rtg. **Sankoyo** Drille **Tho**



イサンガ村 1号井

Drilling No. **NZ-047BH2** Registration No. **672,2010** Date of Commencement **27-Sep-10**  
 Village **Isanga** GPS Coordinates (Are 1960): **28-Sep-10**  
 Ward **Lusu** X Y Contractor **DDCA**  
 District/Municipality **Nzega** **3.6M0524030** **9550844** Rtg. **Sankoyo** Drille **Tho**



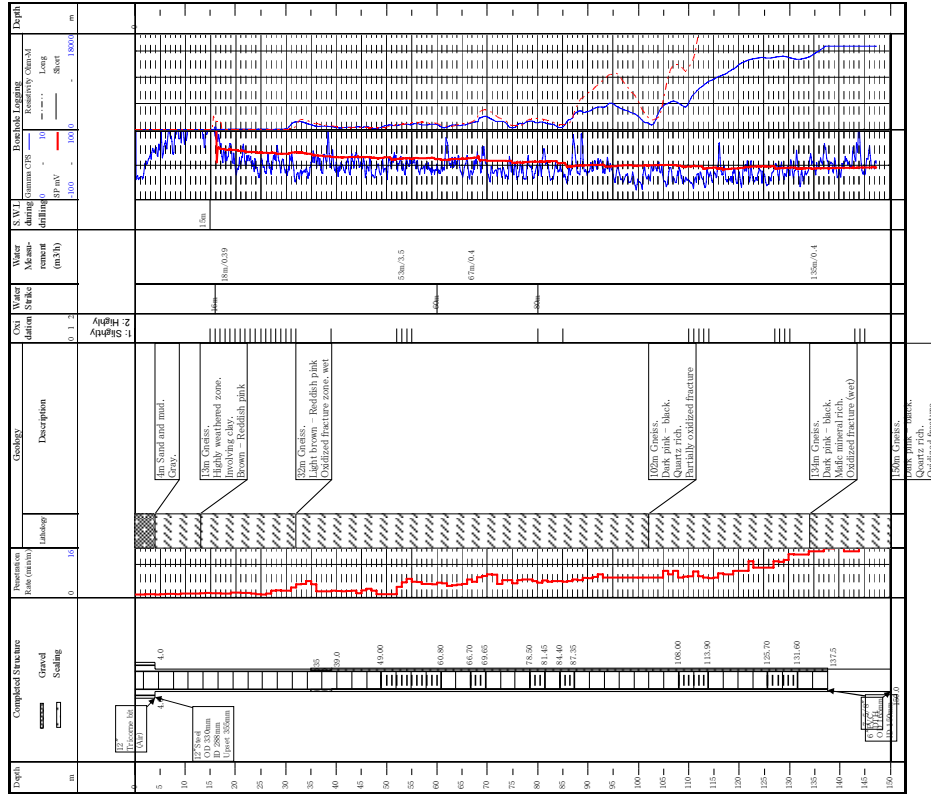
イサンガ村 2号井

図-3 掘削柱状図 (1/8)

Drilling No. SK-028BH2  
 Village Usunga  
 Ward Kipanga  
 District/Municipality Sikonge

Registration No. 671/2010  
 GPS Coordinates (Arc 1960) X Y  
 36M0494744 9368375

Date of Commencement 18-Sep-10  
 Date of Completion 22-Sep-10  
 Contractor DCCA  
 Rig Sankyo Drille Tib

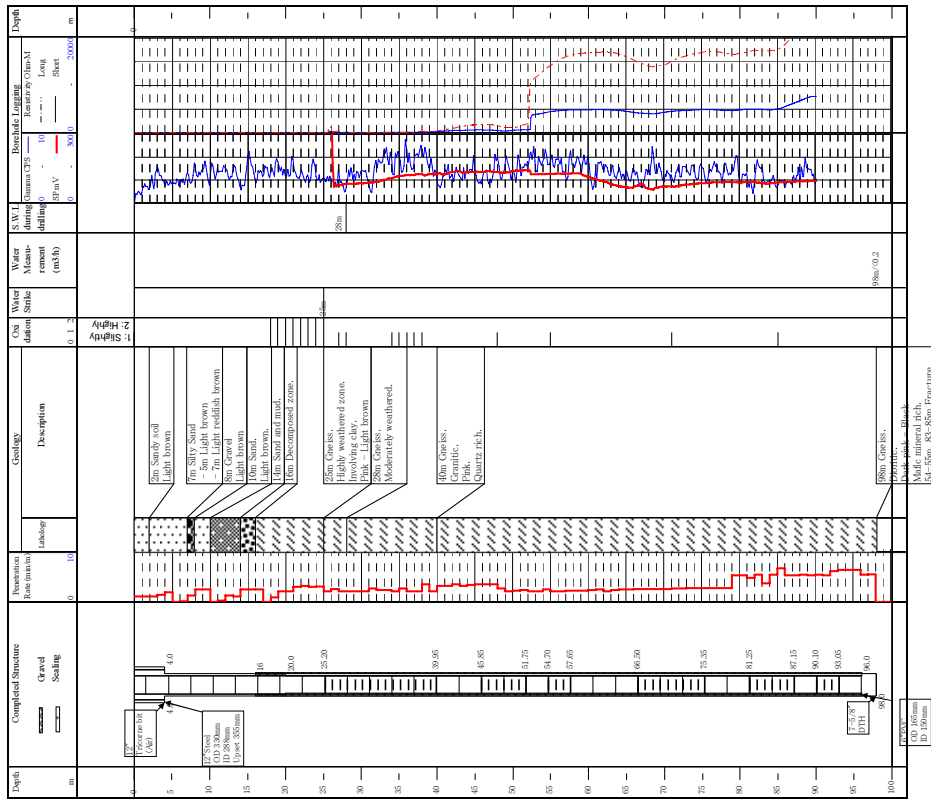


ウスンガ村 2号井

Drilling No. SK-028BH1  
 Village Usunga  
 Ward Kipanga  
 District/Municipality Sikonge

Registration No. 670/2010  
 GPS Coordinates (Arc 1960) X Y  
 36M0492530 9368238

Date of Commencement 14-Sep-10  
 Date of Completion 17-Sep-10  
 Contractor DCCA  
 Rig Sankyo Drille Tib



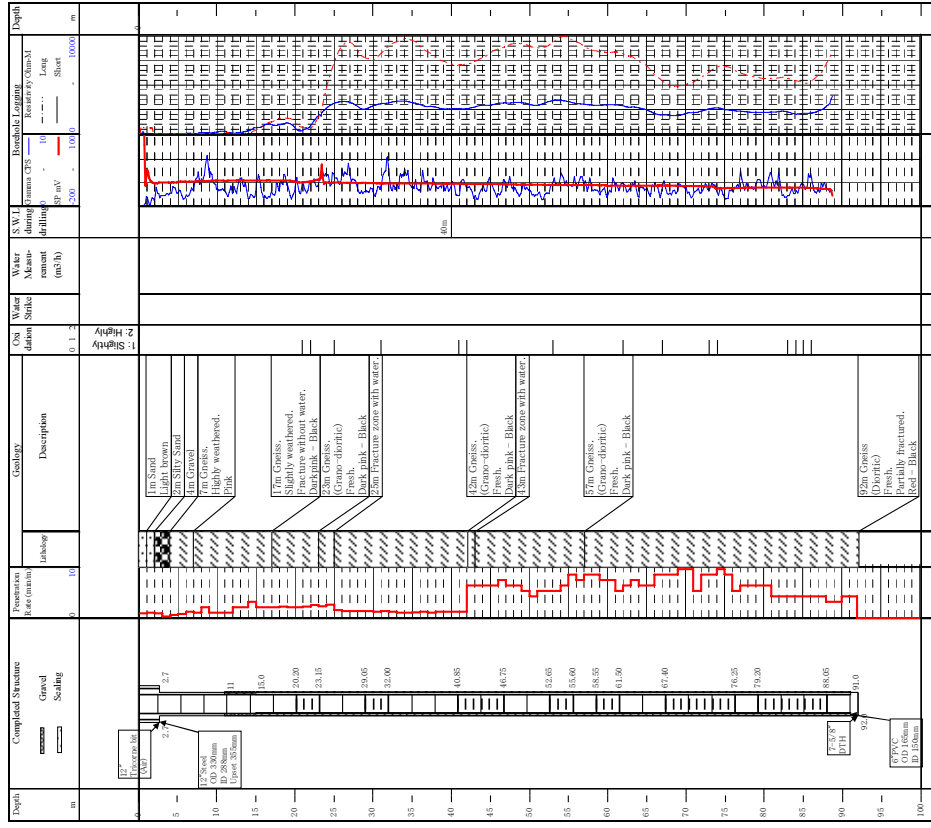
ウスンガ村 1号井

図-3 掘削柱状図 (2/8)

Drilling No. SK-037BH2  
 Village Mpombwe  
 Ward Pangale  
 District/Municipality Sikonge

Registration No. 669/2010  
 GPS Coordinates (Are 1960) X Y  
 36M0465783 9405719

Date of Commencement 12-Sep-10  
 Date of Completion 13-Sep-10  
 Contractor DDCA  
 Rig Sankyo Drille Tito

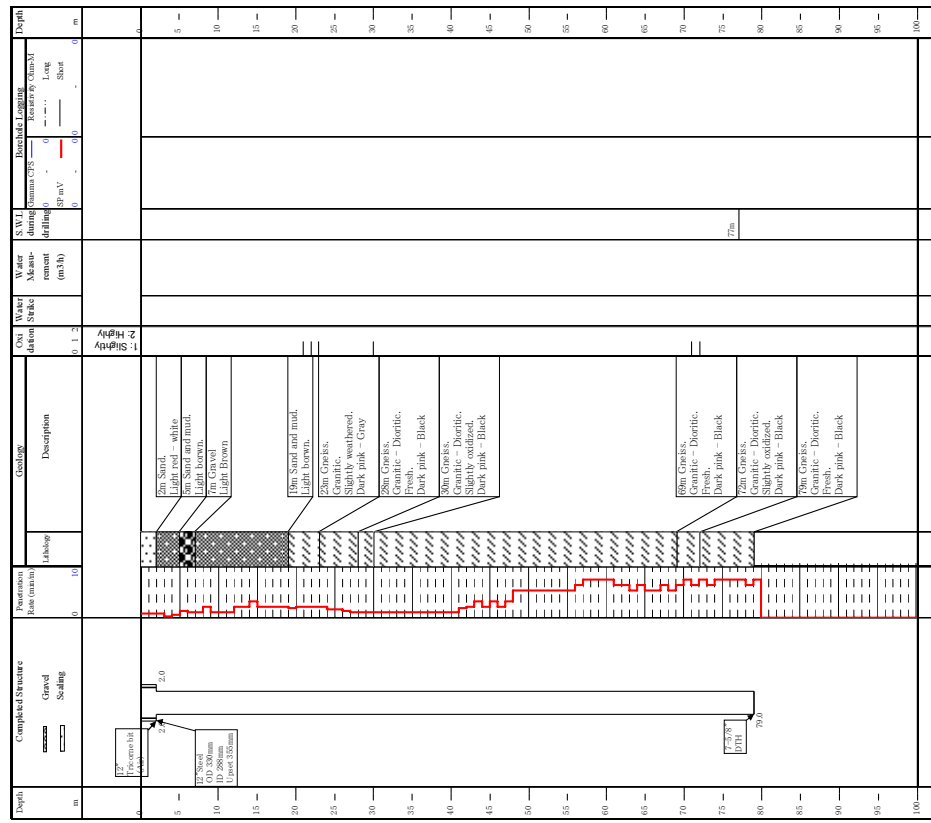


ムボンブウェ村 2号井

Drilling No. SK-037BH1  
 Village Mpombwe  
 Ward Pangale  
 District/Municipality Sikonge

Registration No. 669/2010  
 GPS Coordinates (Are 1960) X Y  
 36M0466529 9402556

Date of Commencement 10-Sep-10  
 Date of Completion 11-Sep-10  
 Contractor DDCA  
 Rig Sankyo Drille Tito



ムボンブウェ村 1号井

図-3 掘削柱状図 (3/8)

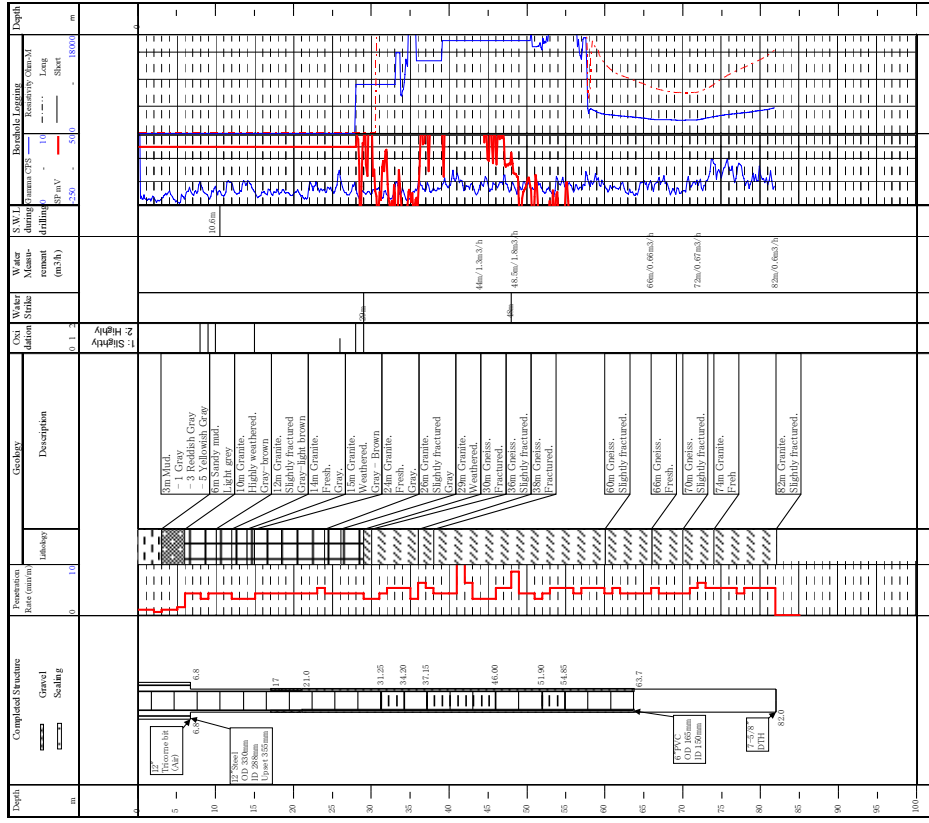




Drilling No. TR-069BHZ  
 Village Mabama  
 Ward Mabama  
 District/Municipality Tabora Rural

Registration No. 665/2010  
 GPS Coordinates (Are 1960) X Y  
 3.6M0448362 9433208

Date of Commencement 10-Sep-10  
 Date of Completion 13-Sep-10  
 Contractor DCCA  
 Rig Shlum Drille kanza

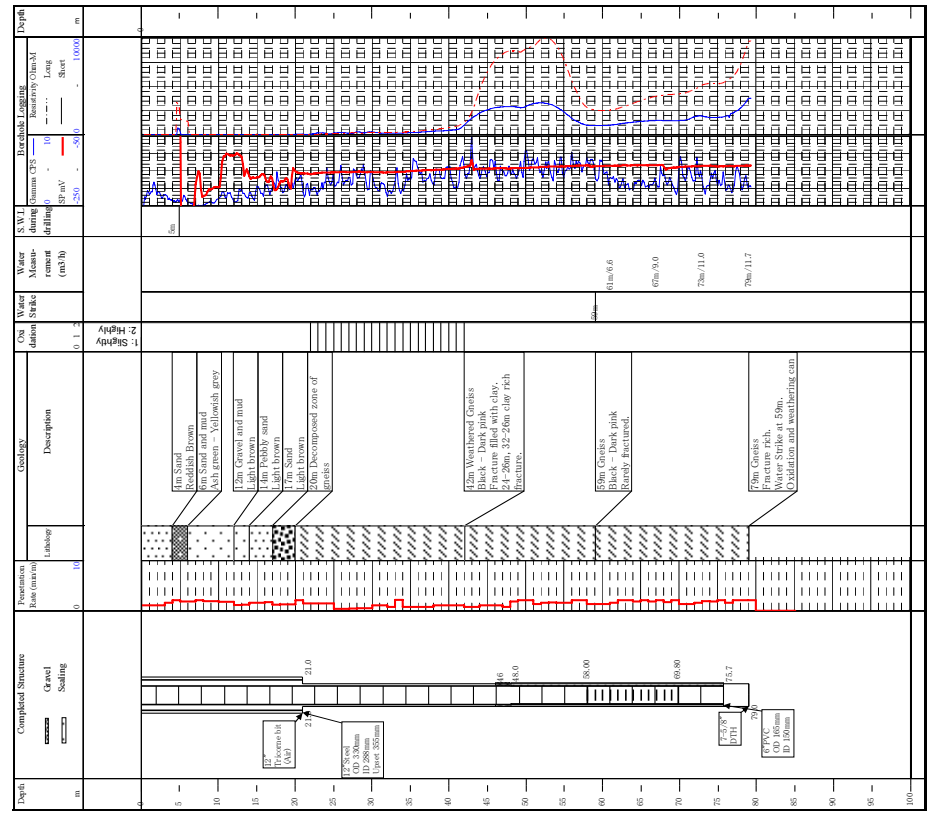


マバマ村 2号井

Drilling No. TR-069BHI  
 Village Mabama  
 Ward Mabama  
 District/Municipality Tabora Rural

Registration No. 664/2010  
 GPS Coordinates (Are 1960) X Y  
 3.6M0448218 9433981

Date of Commencement 1-Sep-10  
 Date of Completion 9-Sep-10  
 Contractor DCCA  
 Rig Shlum Drille kanza



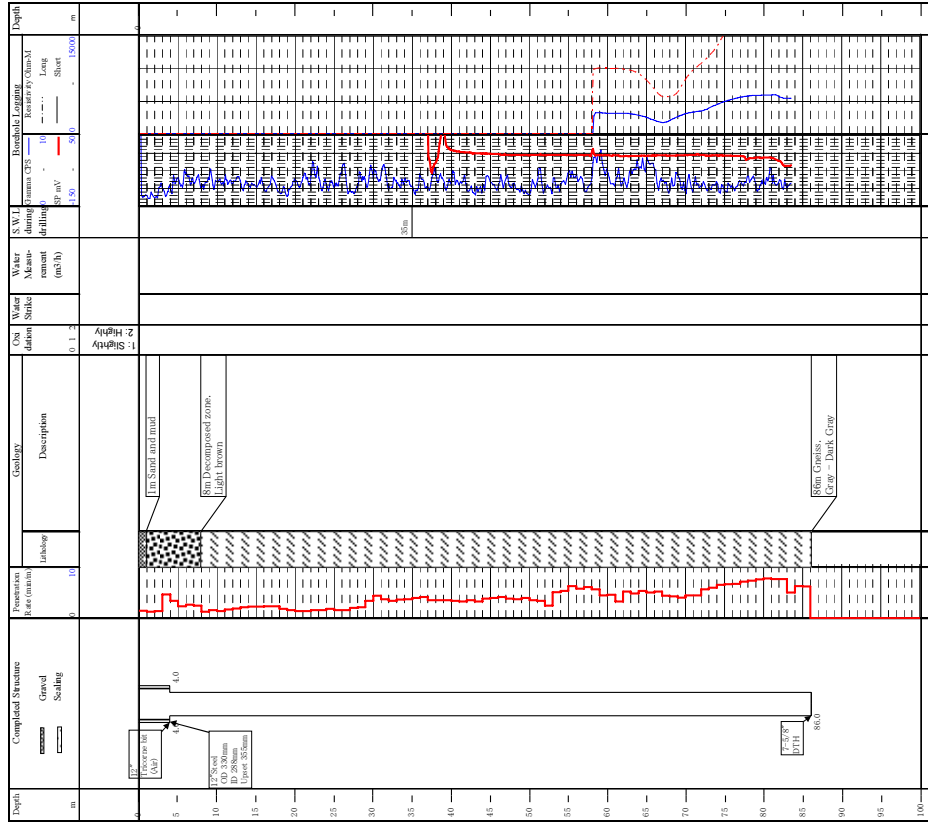
マバマ村 1号井

図-3 掘削柱状図 (5/8)

Drilling No. TR-098BHI  
 Village Ufuluma  
 Ward Ufuluma  
 District/Municipality Tabora Rural

Registration No. X  
 GPS Coordinates (Are 1960) 3.6M042250 9447793

Date of Commencement 19-Sep-10  
 Date of Completion 22-Sep-10  
 Contractor DICA  
 Reg. Shtun Dille Kanza

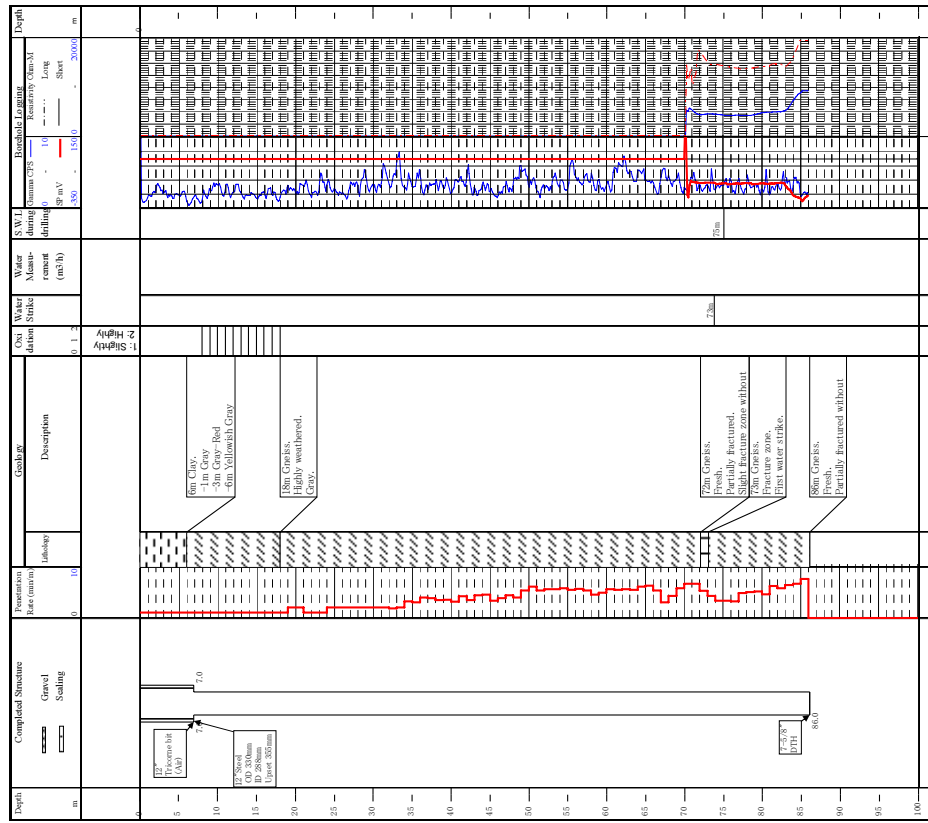


ウフルマ村 1号井

Drilling No. TR-069BHI  
 Village Mabamba  
 Ward Mabamba  
 District/Municipality Tabora Rural

Registration No. X  
 GPS Coordinates (Are 1960) 3.6M0448517 9433250

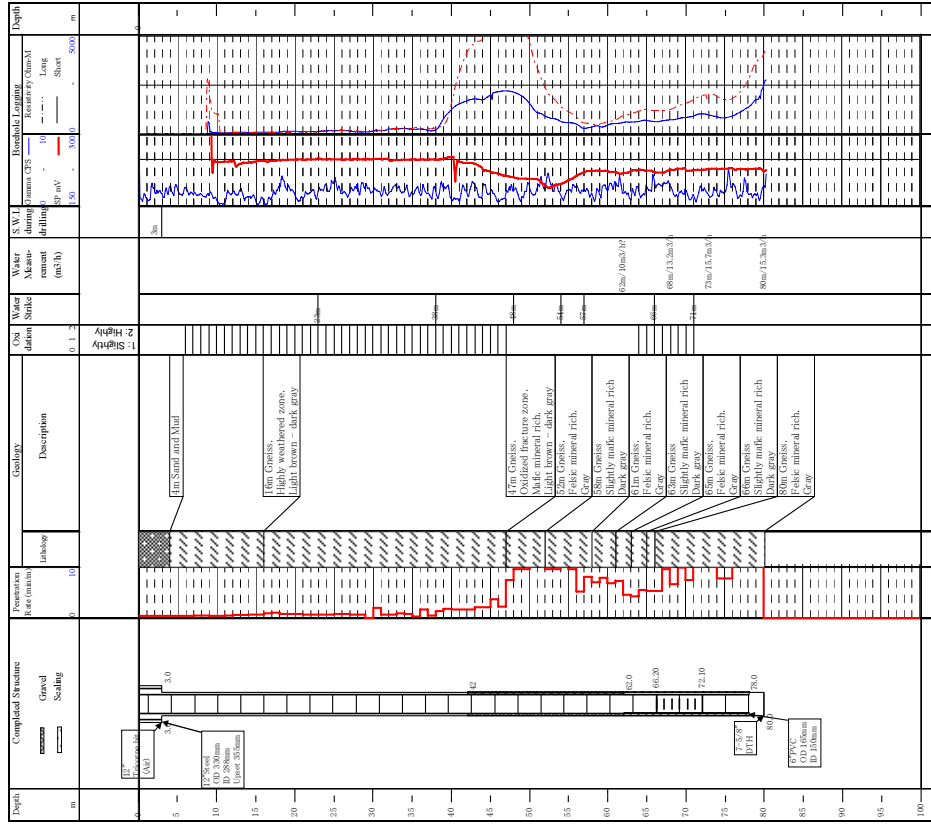
Date of Commencement 14-Sep-10  
 Date of Completion 16-Sep-10  
 Contractor DICA  
 Reg. Shtun Dille Kanza



マバマ村 3号井

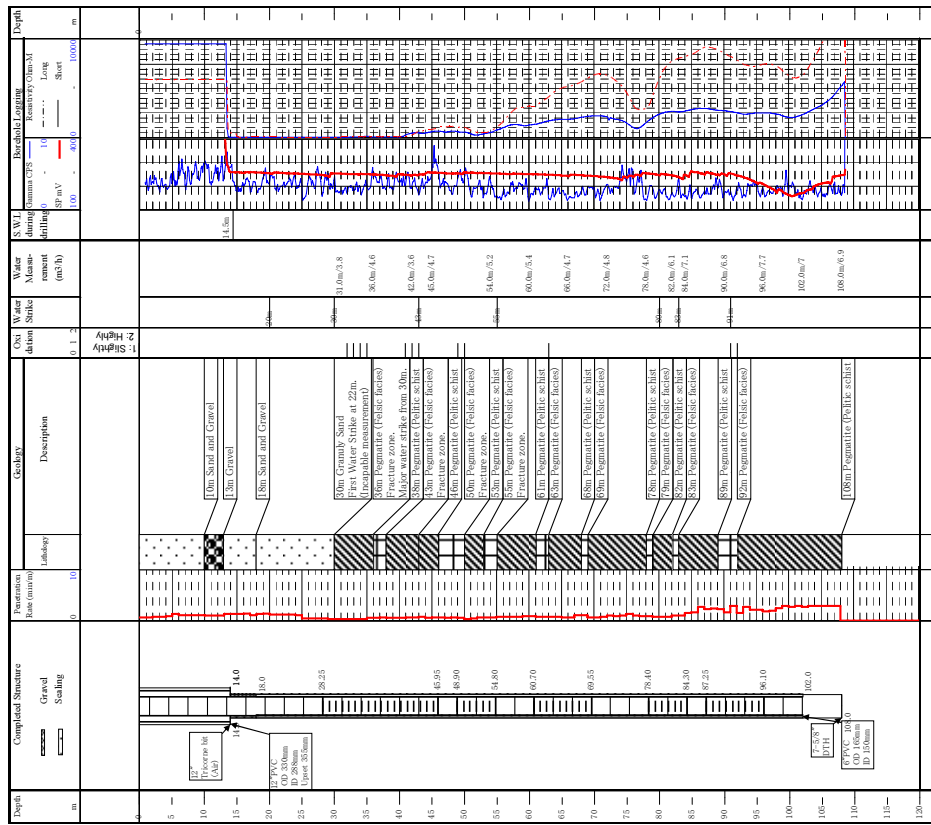
図-3 掘削柱状図 (6/8)

Drilling No. IG-007BHI Registration No. 675/2010 Date of Commencement 24-Sep-10  
 Village Igumo GPS Coordinates (Are 1960) 28-Sep-10  
 Ward Chaburwa X Y Contractor DDCA  
 District/Municipality Iganga 36M0551014 9495593  
 Reg. Status Drill. Status



イグモ村 1号井

Drilling No. TU-008BHI Registration No. 663/2010 Date of Commencement 26-Aug-10  
 Village Kakola GPS Coordinates (Are 1960) 31-Aug-10  
 Ward Kakola X Y Contractor DDCA  
 District/Municipality Tabora Urban 36M0482083 9462843  
 Reg. Status Drill. Status



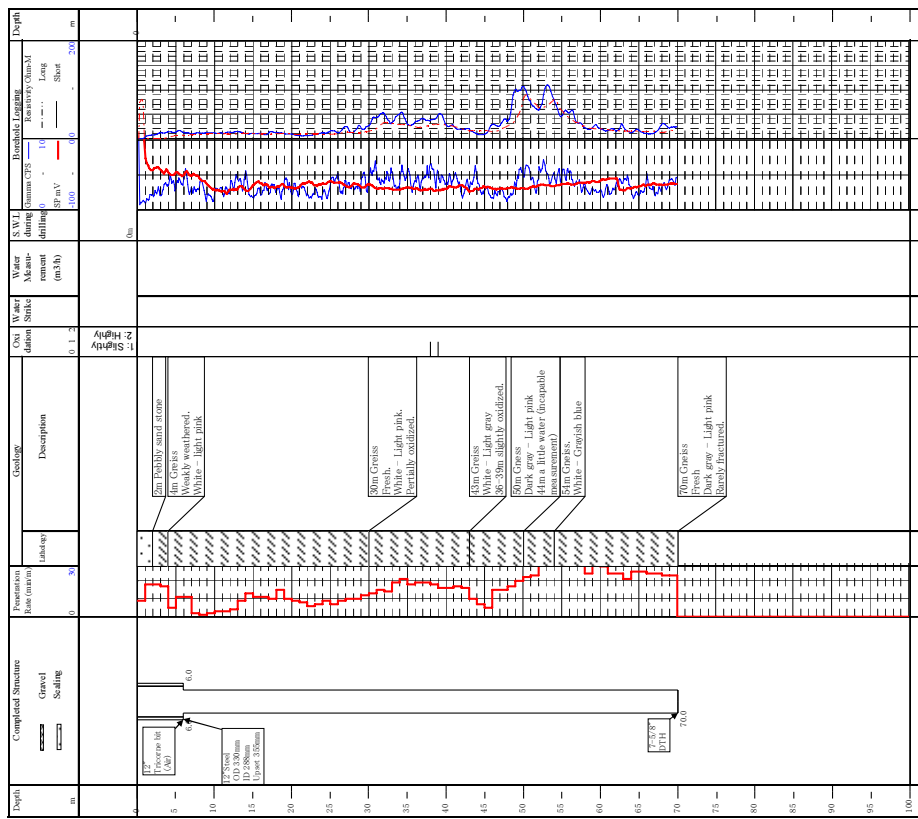
カコラ村 1号井

図-3 掘削柱状図 (7/8)

Drilling No. IG-012BHI  
 Village Bubekele  
 Ward Igwekele  
 District/Municipality Iganga

Registration No. IG-012BHI  
 GPS Coordinates (Ave 1960) X Y  
 36M0578471 9472418

Date of Commencement 29-Sep-10  
 Date of Completion 6-Oct-10  
 Contractor DDKA  
 Rig Shilum Drille kanza

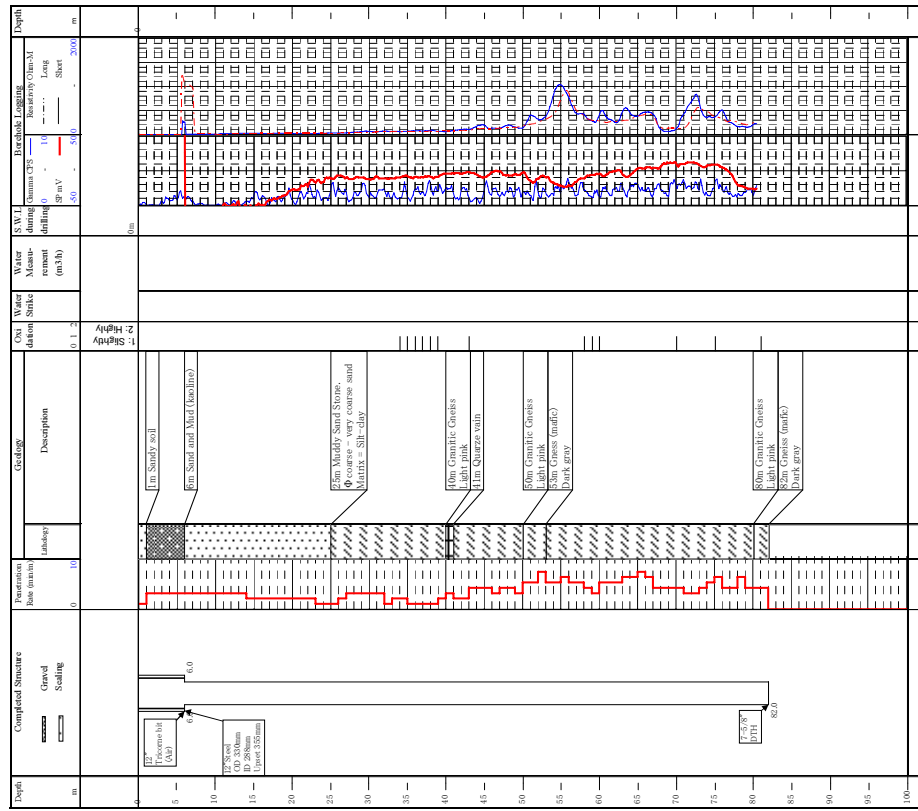


ブベケラ村 1号井

Drilling No. IG-033BHI  
 Village Kagegwai  
 Ward Itunduru  
 District/Municipality Iganga

Registration No. 36M0573228  
 GPS Coordinates (Ave 1960) X Y  
 9553481

Date of Commencement 29-Sep-10  
 Date of Completion 1-Oct-10  
 Contractor DDKA  
 Rig Sankyo Drille Tito



カゴンゴワ村 1号井

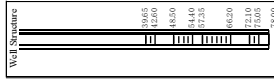
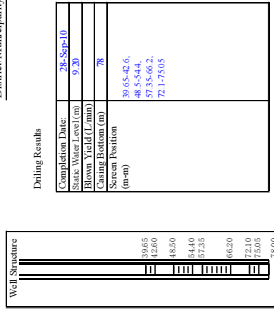
図-3 掘削柱状図 (8/8)



BH No. NZ-047BH1  
Borehole No. 673291D

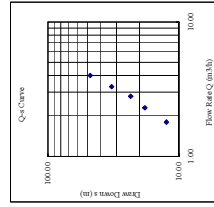
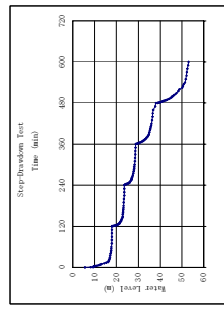
Village Isanga  
Ward Uton  
District/Municipality Ngezi

Date of Submission 28-Oct-08  
Contractor DJCA

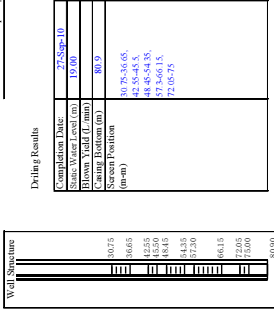
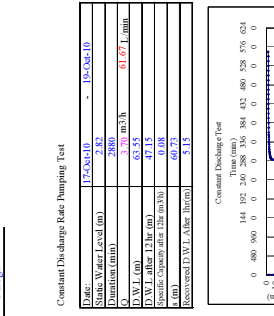


Step-Drawdown Test

Step	Diameter (mm)	Q (m³/h)	D.W.L. (m)	s (m)	Q/s (m³/h.m)
1	120	4.30	38.33	17.66	0.13
2	120	4.30	38.33	23.70	0.13
3	120	4.30	40.67	28.41	0.12
4	120	4.30	51	37.59	0.10
5	120	4.30	66.67	53.09	0.08

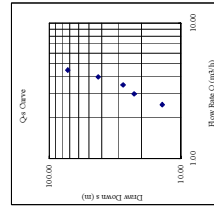
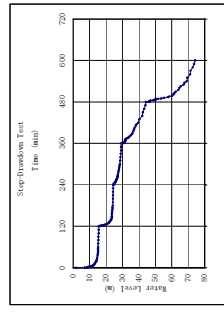


Observation



Step-Drawdown Test

Step	Diameter (mm)	Q (m³/h)	D.W.L. (m)	s (m)	Q/s (m³/h.m)
1	120	4.30	41.13	21.43	0.13
2	120	4.30	41.13	24.40	0.13
3	120	4.30	44.36	27.53	0.13
4	120	4.30	66.67	47.62	0.09
5	120	4.30	74.20	54.90	0.08

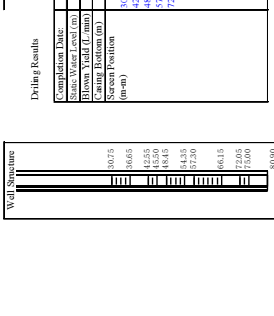
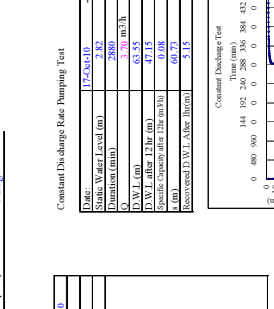


Observation

BH No. NZ-047BH2  
Borehole No. 673291D

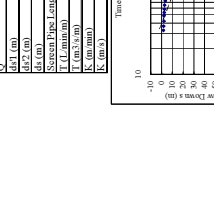
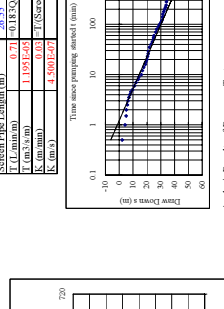
Village Isanga  
Ward Uton  
District/Municipality Ngezi

Date of Submission 28-Oct-08  
Contractor DJCA



Step-Drawdown Test

Step	Diameter (mm)	Q (m³/h)	D.W.L. (m)	s (m)	Q/s (m³/h.m)
1	120	4.30	38.33	17.66	0.13
2	120	4.30	38.33	23.70	0.13
3	120	4.30	40.67	28.41	0.12
4	120	4.30	51	37.59	0.10
5	120	4.30	66.67	53.09	0.08

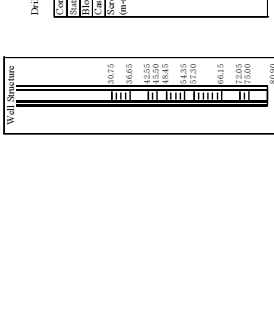


Observation

BH No. NZ-047BH2  
Borehole No. 673291D

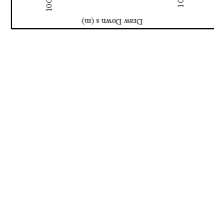
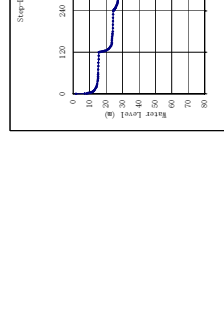
Village Isanga  
Ward Uton  
District/Municipality Ngezi

Date of Submission 28-Oct-08  
Contractor DJCA



Step-Drawdown Test

Step	Diameter (mm)	Q (m³/h)	D.W.L. (m)	s (m)	Q/s (m³/h.m)
1	120	4.30	38.33	17.66	0.13
2	120	4.30	38.33	23.70	0.13
3	120	4.30	40.67	28.41	0.12
4	120	4.30	51	37.59	0.10
5	120	4.30	66.67	53.09	0.08



Observation

イサンガ村 2号井

図-4 揚水試験結果 (1/6)

イサンガ村 1号井

BH No. NZ-047B12 Date of Submission 03-Jan-00  
 Borehole No. 67272010 Contractor DDCA

BH No. NZ-047B11 Date of Submission 28-Oct-08  
 Borehole No. 67272010 Contractor DDCA

Village Isanga  
 Ward Lushu  
 District/Municipality Nzega

Village Isanga  
 Ward Lushu  
 District/Municipality Nzega

Village Isanga  
 Ward Lushu  
 District/Municipality Nzega

Village Isanga  
 Ward Lushu  
 District/Municipality Nzega

Village Isanga  
 Ward Lushu  
 District/Municipality Nzega

Well Structure  
 Completion Date: 28-Sep-10  
 Static Water Level (m): 92.20  
 Screen Position (m-m): 78  
 Diameter (mm): 1800  
 Q (m³/min): 18.00  
 D.W.L. (m): 59.65-62.6  
 Riser Pipe Length (m): 48.5-54.4  
 S (m): 42.60  
 S (m): 72.1-79.0  
 Recovered D.W.L. After 10min (m): 60.58

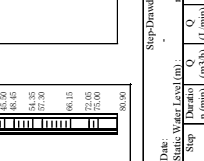
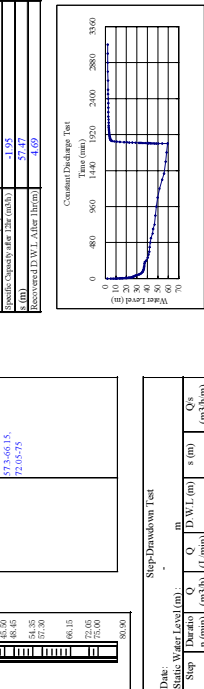
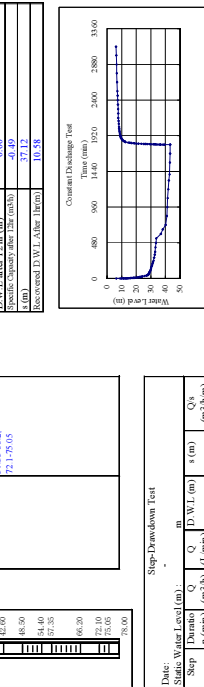
Well Structure  
 Completion Date: 27-Sep-10  
 Static Water Level (m): 19.00  
 Screen Position (m-m): 80.9  
 Diameter (mm): 1800  
 Q (m³/min): 30.75-36.65  
 D.W.L. (m): 42.55-45.5  
 Riser Pipe Length (m): 45.50  
 S (m): 37.66-41.5  
 Recovered D.W.L. After 10min (m): 19.00

Well Structure  
 Completion Date: 27-Sep-10  
 Static Water Level (m): 19.00  
 Screen Position (m-m): 80.9  
 Diameter (mm): 1800  
 Q (m³/min): 30.75-36.65  
 D.W.L. (m): 42.55-45.5  
 Riser Pipe Length (m): 45.50  
 S (m): 37.66-41.5  
 Recovered D.W.L. After 10min (m): 19.00

Constant Discharge Rate Pumping Test  
 Static Water Level (m): 24.64-10  
 Duration (min): 1800  
 Q (m³/min): 3.00 m³/h  
 D.W.L. (m): 43.29  
 Riser Pipe Length (m): 0.00  
 S (m): 37.12  
 Recovered D.W.L. After 10min (m): 60.58

Constant Discharge Rate Pumping Test  
 Static Water Level (m): 24.64-10  
 Duration (min): 1800  
 Q (m³/min): 3.00 m³/h  
 D.W.L. (m): 43.29  
 Riser Pipe Length (m): 0.00  
 S (m): 37.12  
 Recovered D.W.L. After 10min (m): 60.58

Constant Discharge Rate Pumping Test  
 Static Water Level (m): 24.64-10  
 Duration (min): 1800  
 Q (m³/min): 3.00 m³/h  
 D.W.L. (m): 43.29  
 Riser Pipe Length (m): 0.00  
 S (m): 37.12  
 Recovered D.W.L. After 10min (m): 60.58



Step	Duration (min)	Q (m³/min)	D.W.L. (m)	S (m)	Q's (m³/h)
1	1	1.5	43.29	42.60	18.00
2	2	3.0	43.29	42.60	36.00
3	3	4.5	43.29	42.60	54.00
4	4	6.0	43.29	42.60	72.00
5	5	7.5	43.29	42.60	90.00

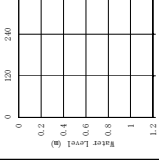
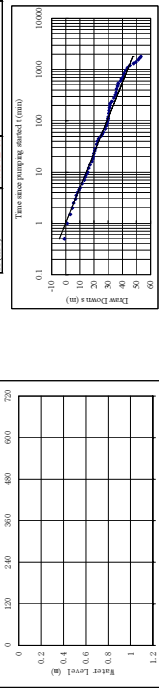
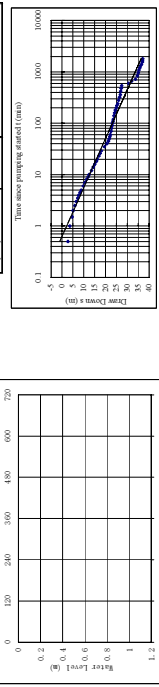
Step	Duration (min)	Q (m³/min)	D.W.L. (m)	S (m)	Q's (m³/h)
1	1	1.5	43.29	42.60	18.00
2	2	3.0	43.29	42.60	36.00
3	3	4.5	43.29	42.60	54.00
4	4	6.0	43.29	42.60	72.00
5	5	7.5	43.29	42.60	90.00

Step	Duration (min)	Q (m³/min)	D.W.L. (m)	S (m)	Q's (m³/h)
1	1	1.5	43.29	42.60	18.00
2	2	3.0	43.29	42.60	36.00
3	3	4.5	43.29	42.60	54.00
4	4	6.0	43.29	42.60	72.00
5	5	7.5	43.29	42.60	90.00

Analysis Results of Constant Discharge Rate Pumping Test  
 Q (m³/min): 3.00 m³/h  
 dL1 (m): 13.671774 dL2 (min): 50 Lamin  
 dL2 (m): 13.671774 dL3 (min): 100  
 dL3 (m): 13.671774 dL4 (min): 150  
 Screen Pipe Length (m): 20.65  
 T (m³/h): 0.85 Q1 RQ/Qd  
 U (m³/h): 1.454E-05  
 K (m³/min): 7.041E-09 T (Screen Length)  
 R (m³/min): 7.041E-09

Analysis Results of Constant Discharge Rate Pumping Test  
 Q (m³/min): 3.00 m³/h  
 dL1 (m): 13.671774 dL2 (min): 50 Lamin  
 dL2 (m): 13.671774 dL3 (min): 100  
 dL3 (m): 13.671774 dL4 (min): 150  
 Screen Pipe Length (m): 20.65  
 T (m³/h): 0.85 Q1 RQ/Qd  
 U (m³/h): 1.454E-05  
 K (m³/min): 7.041E-09 T (Screen Length)  
 R (m³/min): 7.041E-09

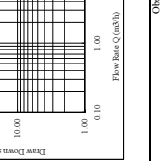
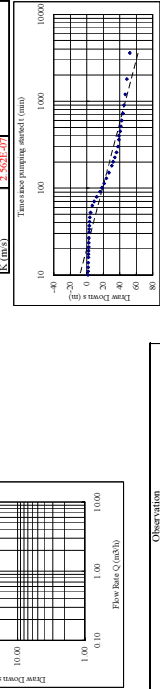
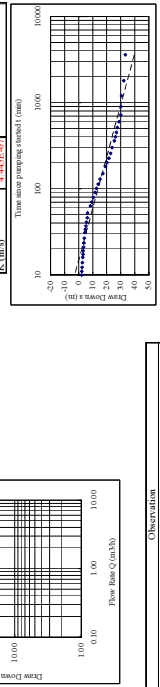
Analysis Results of Constant Discharge Rate Pumping Test  
 Q (m³/min): 3.00 m³/h  
 dL1 (m): 13.671774 dL2 (min): 50 Lamin  
 dL2 (m): 13.671774 dL3 (min): 100  
 dL3 (m): 13.671774 dL4 (min): 150  
 Screen Pipe Length (m): 20.65  
 T (m³/h): 0.85 Q1 RQ/Qd  
 U (m³/h): 1.454E-05  
 K (m³/min): 7.041E-09 T (Screen Length)  
 R (m³/min): 7.041E-09



Results of Recovery Test  
 dL1 (m): 13.800783 dL2 (min): 50 Lamin  
 dL2 (m): 30.42044 dL3 (min): 100  
 dL3 (m): 15.61976 dL4 (min): 150  
 Screen Pipe Length (m): 0.85 Q1 RQ/Qd  
 U (m³/h): 0.00  
 T (m³/h): 9.179E-06  
 K (m³/min): 0.00 T (Screen Length)  
 R (m³/min): 4.445E-07

Results of Recovery Test  
 dL1 (m): 13.800783 dL2 (min): 50 Lamin  
 dL2 (m): 30.42044 dL3 (min): 100  
 dL3 (m): 15.61976 dL4 (min): 150  
 Screen Pipe Length (m): 0.85 Q1 RQ/Qd  
 U (m³/h): 0.00  
 T (m³/h): 9.179E-06  
 K (m³/min): 0.00 T (Screen Length)  
 R (m³/min): 4.445E-07

Results of Recovery Test  
 dL1 (m): 13.800783 dL2 (min): 50 Lamin  
 dL2 (m): 30.42044 dL3 (min): 100  
 dL3 (m): 15.61976 dL4 (min): 150  
 Screen Pipe Length (m): 0.85 Q1 RQ/Qd  
 U (m³/h): 0.00  
 T (m³/h): 9.179E-06  
 K (m³/min): 0.00 T (Screen Length)  
 R (m³/min): 4.445E-07



Observation  
 Simultaneous pumping test with [NZ047B11]

Observation  
 Simultaneous pumping test with [NZ047B11]

Observation  
 Simultaneous pumping test with [NZ047B11]

イサंगा村 2 号井 (同村1号井との同時揚水試験)

イサंगा村 1 号井 (同村2号井との同時揚水試験)

図-4 揚水試験結果 (2/6)

BH No. SK-028B11 Date of Submission 28-Oct-08  
 Borehole No. 670/2010 Contractor DDCA

Village Usunga  
 Ward Kipanga  
 District/Municipality Sikonge

BH No. SK-028B12 Date of Submission 28-Oct-08  
 Borehole No. 670/2010 Contractor DDCA

Village Usunga  
 Ward Kipanga  
 District/Municipality Sikonge

BH No. SK-028B14 Date of Submission 28-Oct-08  
 Borehole No. 670/2010 Contractor DDCA

Village Usunga  
 Ward Kipanga  
 District/Municipality Sikonge

BH No. SK-028B11 Date of Submission 28-Oct-08  
 Borehole No. 670/2010 Contractor DDCA

Village Usunga  
 Ward Kipanga  
 District/Municipality Sikonge

**Well Structure**

**Dripping Results**

Completion Date:	22-Sep-10
Static Water Level (m):	15.00
Flowm Yield (L/min):	131.5
Casing Position (m-m):	49-60.8
Q:	66.7-69.65
Q <sub>10</sub> (m <sup>3</sup> /h):	7.7-7.9
D.W.L. (m):	117.59
D.W.L. after 12-hr (m):	7.7-7.9
Static Discharge Rate Pumping Test (m <sup>3</sup> /h):	100.03
Recovered D.W.L. after 12hr (m):	84.018

**Constant Discharge Rate Pumping Test**

Date:	22-Sep-10
Static Water Level (m):	15.00
Completion Date:	22-Sep-10
Flowm Yield (L/min):	131.5
Casing Position (m-m):	49-60.8
Q:	66.7-69.65
Q <sub>10</sub> (m <sup>3</sup> /h):	7.7-7.9
D.W.L. (m):	117.59
D.W.L. after 12-hr (m):	7.7-7.9
Static Discharge Rate Pumping Test (m <sup>3</sup> /h):	100.03
Recovered D.W.L. after 12hr (m):	84.018

**Step Drawdown Test**

Date: 27-Oct-10

Step	Duration (min)	Q (m <sup>3</sup> /h)	D.W.L. (m)	s (m)	Q/s (m <sup>3</sup> /h/m)
1	30	20.83	20.83	4.50	0.13
2	120	21.89	21.89	4.50	0.13
3	120	13.13	20.08	22.69	0.64
4	120	16.67	26.53	29.14	0.03
5	120	20.23	28.24	28.24	0.03

**Analysis Results of Constant Discharge Rate Pumping Test**

Q	0.8 m <sup>3</sup> /h
Q <sub>10</sub> (m <sup>3</sup> /h)	20.1701 (dl (mm))
dl (m)	20.1701 (dl (mm))
dl <sub>2</sub> (m)	20.1701 (dl (mm))
L (m-min)	20.1701 (dl (mm))
L (m <sup>3</sup> /min)	1.99815-0.6
K (m <sup>2</sup> /min)	6.12726-0.17 (Screen Length)

**Step Drawdown Test**

Date: 27-Oct-10

Step	Duration (min)	Q (m <sup>3</sup> /h)	D.W.L. (m)	s (m)	Q/s (m <sup>3</sup> /h/m)
1	30	20.83	20.83	4.50	0.13
2	120	21.89	21.89	4.50	0.13
3	120	13.13	20.08	22.69	0.64
4	120	16.67	26.53	29.14	0.03
5	120	20.23	28.24	28.24	0.03

**Analysis Results of Recovery Test**

dl (m)	83.14472 (dl (m))
dl <sub>2</sub> (m)	94.97062 (dl (m))
dl (m)	118.6572
Screen Pipe Length (m)	0
L (m-min)	0
L (m <sup>3</sup> /min)	3.4316-0.6
K (m <sup>2</sup> /min)	1.95815-0.17 (Screen Length)

**Well Structure**

**Dripping Results**

Completion Date:	17-Sep-10
Static Water Level (m):	29.00
Flowm Yield (L/min):	98
Casing Position (m-m):	382-399.95
Q:	48.85-51.75
Q <sub>10</sub> (m <sup>3</sup> /h):	54.25-56.65
D.W.L. (m):	132.05
D.W.L. after 12-hr (m):	132.05
Static Discharge Rate Pumping Test (m <sup>3</sup> /h):	81.28-87.15
Recovered D.W.L. after 12hr (m):	90.1-93.05

**Constant Discharge Rate Pumping Test**

Date:	17-Sep-10
Static Water Level (m):	29.00
Completion Date:	17-Sep-10
Flowm Yield (L/min):	98
Casing Position (m-m):	382-399.95
Q:	48.85-51.75
Q <sub>10</sub> (m <sup>3</sup> /h):	54.25-56.65
D.W.L. (m):	132.05
D.W.L. after 12-hr (m):	132.05
Static Discharge Rate Pumping Test (m <sup>3</sup> /h):	81.28-87.15
Recovered D.W.L. after 12hr (m):	90.1-93.05

**Step Drawdown Test**

Date: 17-Sep-10

Step	Duration (min)	Q (m <sup>3</sup> /h)	D.W.L. (m)	s (m)	Q/s (m <sup>3</sup> /h/m)
1	30	20.83	20.83	4.50	0.13
2	120	21.89	21.89	4.50	0.13
3	120	13.13	20.08	22.69	0.64
4	120	16.67	26.53	29.14	0.03
5	120	20.23	28.24	28.24	0.03

**Analysis Results of Constant Discharge Rate Pumping Test**

Q	0.8 m <sup>3</sup> /h
Q <sub>10</sub> (m <sup>3</sup> /h)	6.7-313.14 (dl (mm))
dl (m)	6.7-313.14 (dl (mm))
dl <sub>2</sub> (m)	6.7-313.14 (dl (mm))
L (m-min)	6.7-313.14 (dl (mm))
L (m <sup>3</sup> /min)	6.39151-0.7
K (m <sup>2</sup> /min)	1.5480-0.01 (Screen Length)

**Step Drawdown Test**

Date: 17-Sep-10

Step	Duration (min)	Q (m <sup>3</sup> /h)	D.W.L. (m)	s (m)	Q/s (m <sup>3</sup> /h/m)
1	30	20.83	20.83	4.50	0.13
2	120	21.89	21.89	4.50	0.13
3	120	13.13	20.08	22.69	0.64
4	120	16.67	26.53	29.14	0.03
5	120	20.23	28.24	28.24	0.03

**Analysis Results of Recovery Test**

dl (m)	5.831758 (dl (m))
dl <sub>2</sub> (m)	70.026448 (dl (m))
dl (m)	15.715691
Screen Pipe Length (m)	0.05
L (m-min)	9.70516-0.7
L (m <sup>3</sup> /min)	2.53012-0.01 (Screen Length)

**Well Structure**

**Dripping Results**

Completion Date:	17-Sep-10
Static Water Level (m):	29.00
Flowm Yield (L/min):	98
Casing Position (m-m):	382-399.95
Q:	48.85-51.75
Q <sub>10</sub> (m <sup>3</sup> /h):	54.25-56.65
D.W.L. (m):	132.05
D.W.L. after 12-hr (m):	132.05
Static Discharge Rate Pumping Test (m <sup>3</sup> /h):	81.28-87.15
Recovered D.W.L. after 12hr (m):	90.1-93.05

**Constant Discharge Rate Pumping Test**

Date:	17-Sep-10
Static Water Level (m):	29.00
Completion Date:	17-Sep-10
Flowm Yield (L/min):	98
Casing Position (m-m):	382-399.95
Q:	48.85-51.75
Q <sub>10</sub> (m <sup>3</sup> /h):	54.25-56.65
D.W.L. (m):	132.05
D.W.L. after 12-hr (m):	132.05
Static Discharge Rate Pumping Test (m <sup>3</sup> /h):	81.28-87.15
Recovered D.W.L. after 12hr (m):	90.1-93.05

**Step Drawdown Test**

Date: 17-Sep-10

Step	Duration (min)	Q (m <sup>3</sup> /h)	D.W.L. (m)	s (m)	Q/s (m <sup>3</sup> /h/m)
1	30	20.83	20.83	4.50	0.13
2	120	21.89	21.89	4.50	0.13
3	120	13.13	20.08	22.69	0.64
4	120	16.67	26.53	29.14	0.03
5	120	20.23	28.24	28.24	0.03

**Analysis Results of Constant Discharge Rate Pumping Test**

Q	0.8 m <sup>3</sup> /h
Q <sub>10</sub> (m <sup>3</sup> /h)	6.7-313.14 (dl (mm))
dl (m)	6.7-313.14 (dl (mm))
dl <sub>2</sub> (m)	6.7-313.14 (dl (mm))
L (m-min)	6.7-313.14 (dl (mm))
L (m <sup>3</sup> /min)	6.39151-0.7
K (m <sup>2</sup> /min)	1.5480-0.01 (Screen Length)

**Step Drawdown Test**

Date: 17-Sep-10

Step	Duration (min)	Q (m <sup>3</sup> /h)	D.W.L. (m)	s (m)	Q/s (m <sup>3</sup> /h/m)
1	30	20.83	20.83	4.50	0.13
2	120	21.89	21.89	4.50	0.13
3	120	13.13	20.08	22.69	0.64
4	120	16.67	26.53	29.14	0.03
5	120	20.23	28.24	28.24	0.03

**Analysis Results of Recovery Test**

dl (m)	5.831758 (dl (m))
dl <sub>2</sub> (m)	70.026448 (dl (m))
dl (m)	15.715691
Screen Pipe Length (m)	0.05
L (m-min)	9.70516-0.7
L (m <sup>3</sup> /min)	2.53012-0.01 (Screen Length)

ウスンガ村 2号井

ウスンガ村 1号井

図-4 揚水試験結果 (3/6)

BH No. **TR-044BH2**  
 Borehole No. **662/2010**

Village **Mpanabuli**  
 Ward **Kizengei**  
 District/Municipality **Tabora Rural**

Date of Submission **28-Oct-08**  
 Contractor **DDCA**

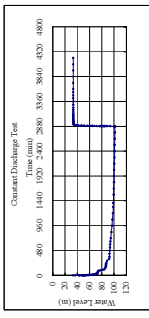
Well Structure

Driiling Results

Completion Date:	15-Oct-10
Static Water Level (m):	28.00
Screen Bottom (m):	12.5
Screen Position (m-m):	66.00-86.65, 92.55-107.50, 113.20-122.05
Q (m <sup>3</sup> /h):	166.00
Q (m <sup>3</sup> /d):	3984.00
Q (m <sup>3</sup> /a):	142200.00
Recommended D.W.L. After 1hr (m):	92.35
Q (m <sup>3</sup> /h):	107.30
Q (m <sup>3</sup> /d):	2575.20
Q (m <sup>3</sup> /a):	94500.00

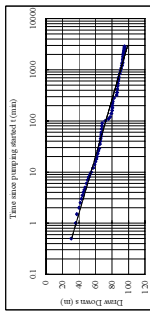
Constant Discharge Rate Pumping Test

Date:	25-Oct-10
Static Water Level (m):	31.09
Duration (min):	2880
Q (m <sup>3</sup> /h):	9.00
D.W.L. (m):	101.38
Screen Position (m-m):	0.0-1.5
Screen Pipe Length (m):	68.29
Recommended D.W.L. After 1hr (m):	133.86



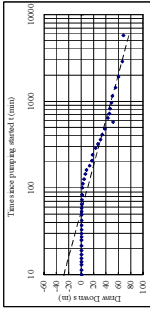
Analysis Results of Constant Discharge Rate Pumping Test

Q (m <sup>3</sup> /h):	9.00
dL (m):	53.545454 (dL (mm))
dR (m):	1.590402 (dR (mm))
Screen Pipe Length (m):	44.25
L (L (mm)):	1.53 (0.183Q/ds)
L (m <sup>3</sup> /s):	2.5554545
K (mm/min):	0.03 (Screen Length)
K (m <sup>3</sup> /d):	5.7742421



Analysis Results of Recovery Test

dL (m):	40.270404 (dL (mm))
dR (m):	48.2723 (dR (mm))
Screen Pipe Length (m):	38.017165
L (L (mm)):	0.02 (0.183Q/ds)
L (m <sup>3</sup> /s):	1.204972
K (mm/min):	0.02 (Screen Length)
K (m <sup>3</sup> /d):	2.7206407



BH No. **TR-044BH2**  
 Borehole No. **662/2010**

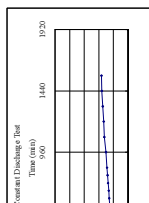
Village **Mpanabuli**  
 Ward **Kizengei**  
 District/Municipality **Tabora Rural**

Date of Submission **28-Oct-08**  
 Contractor **DDCA**

Well Structure

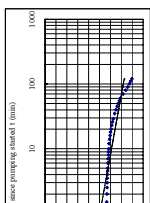
Driiling Results

Completion Date:	15-Oct-10
Static Water Level (m):	28.00
Screen Bottom (m):	12.5
Screen Position (m-m):	66.00-86.65, 92.55-107.50, 113.20-122.05
Q (m <sup>3</sup> /h):	166.00
Q (m <sup>3</sup> /d):	3984.00
Q (m <sup>3</sup> /a):	142200.00
Recommended D.W.L. After 1hr (m):	92.35
Q (m <sup>3</sup> /h):	107.30
Q (m <sup>3</sup> /d):	2575.20
Q (m <sup>3</sup> /a):	94500.00



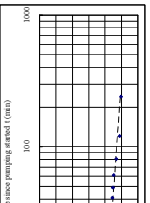
Analysis Results of Constant Discharge Rate Pumping Test

Q (m <sup>3</sup> /h):	9.00
dL (m):	53.545454 (dL (mm))
dR (m):	1.590402 (dR (mm))
Screen Pipe Length (m):	44.25
L (L (mm)):	1.53 (0.183Q/ds)
L (m <sup>3</sup> /s):	2.5554545
K (mm/min):	0.03 (Screen Length)
K (m <sup>3</sup> /d):	5.7742421



Analysis Results of Recovery Test

dL (m):	40.270404 (dL (mm))
dR (m):	48.2723 (dR (mm))
Screen Pipe Length (m):	38.017165
L (L (mm)):	0.02 (0.183Q/ds)
L (m <sup>3</sup> /s):	1.204972
K (mm/min):	0.02 (Screen Length)
K (m <sup>3</sup> /d):	2.7206407



BH No. **SK-037BH2**  
 Borehole No. **669/2010**

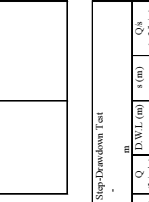
Village **Mpanabuli**  
 Ward **Pungule**  
 District/Municipality **Sikonge**

Date of Submission **28-Oct-08**  
 Contractor **DDCA**

Well Structure

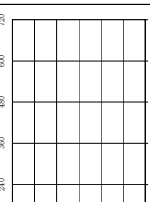
Driiling Results

Completion Date:	13-Sep-10
Static Water Level (m):	40.00
Screen Bottom (m):	91
Screen Position (m-m):	20.2-21.15, 29.05-32, 40.85-46.75, 55.00-59.00, 61.50-67.40
Q (m <sup>3</sup> /h):	67.40
Q (m <sup>3</sup> /d):	1617.60
Q (m <sup>3</sup> /a):	592320.00
Recommended D.W.L. After 1hr (m):	79.80
Q (m <sup>3</sup> /h):	79.80
Q (m <sup>3</sup> /d):	1915.20
Q (m <sup>3</sup> /a):	697440.00



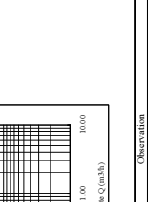
Analysis Results of Constant Discharge Rate Pumping Test

Q (m <sup>3</sup> /h):	0.5
dL (m):	61.02418 (dL (mm))
dR (m):	1.870752 (dR (mm))
Screen Pipe Length (m):	13.40
L (L (mm)):	0.06 (0.183Q/ds)
L (m <sup>3</sup> /s):	1.4172506
K (mm/min):	3.989740



Analysis Results of Recovery Test

dL (m):	23.55044 (dL (mm))
dR (m):	26.43272 (dR (mm))
Screen Pipe Length (m):	2.891129
L (L (mm)):	0.31 (0.183Q/ds)
L (m <sup>3</sup> /s):	5.2911406
K (mm/min):	1.495107



ムポンブエリ村 2号井

ムポンブエリ村 2号井

図-4 揚水試験結果 (4/6)



BH No. TR-069BH2  
 Borehole No. 6652010

Mahama  
 Mahama  
 Tabona Rural

Date of Submission 28-Oct-08  
 Contractor DDCA

Drilling Results  
 Completion Date: 15-Sep-10  
 Static Water Level (m): 10.60  
 Screen Bottom (m): 63.7  
 Screen Position (m): 31.25-34.2, 37.15-40.6, 43.05-46.5, 49.95-53.4



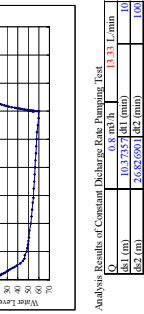
Constant Discharge Rate Pumping Test

Date:	05-Oct-10
Static Water Level (m):	11.50
Duration (min):	2800
Q (m <sup>3</sup> /h):	2.800
D.W.L. (m):	13.14
Specific Capacity (lit/2hr (m <sup>3</sup> )):	0.02
Recovered D.W.L. After 1hr (m):	49.00
Recovered D.W.L. After 3hr (m):	16.61



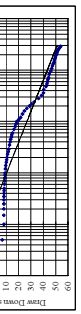
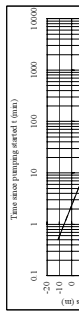
Analysis Results of Constant Discharge Rate Pumping Test

Q	0.8 m <sup>3</sup> /h
d <sub>1</sub> (m)	10.7375 d <sub>1</sub> (min)
d <sub>2</sub> (m)	12.4533 d <sub>2</sub> (min)
Screen Pipe Length (m)	14.75
L (m/min)	0.14
K (m <sup>3</sup> /m)	2.471E+05
K (m <sup>3</sup> /min)	0.01
K (m <sup>3</sup> /d)	1.675E+07



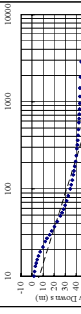
Step-Drawdown Test

Date:	14-Oct-10					
Static Water Level (m):	11.68					
Duration	Q	D.W.L. (m)	s (m)	Q's		
1	1.20	0.60	20.77	17.04	5.36	0.02
2	1.20	0.60	10	21.89	10.21	0.06
3	1.20	0.60	13.13	40.08	28.40	0.03
4	1.20	1.00	16.67	56.53	44.85	0.02
5	1.20	1.20	21	69.23	48.53	0.02



Analysis Results of Recovery Test

Q	0.6 m <sup>3</sup> /h
d <sub>1</sub> (m)	31.4454 d <sub>1</sub> (min)
d <sub>2</sub> (m)	56.9683 d <sub>2</sub> (min)
Screen Pipe Length (m)	2.027065
L (m/min)	0.09
K (m <sup>3</sup> /m)	1.631E+09
K (m <sup>3</sup> /min)	0.01
K (m <sup>3</sup> /d)	1.096E+07



Observation

BH No. TR-069BH2  
 Borehole No. 6652010

Mahama  
 Mahama  
 Tabona Rural

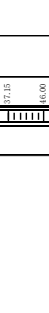
Date of Submission 29-Oct-08  
 Contractor DDCA

Drilling Results  
 Completion Date: 15-Sep-10  
 Static Water Level (m): 10.60  
 Screen Bottom (m): 63.7  
 Screen Position (m): 31.25-34.2, 37.15-40.6, 43.05-46.5, 49.95-53.4



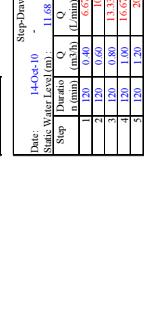
Constant Discharge Rate Pumping Test

Date:	25-Sep-10
Static Water Level (m):	6.31
Duration (min):	2800
Q (m <sup>3</sup> /h):	1.000
D.W.L. (m):	66.69
Specific Capacity (lit/2hr (m <sup>3</sup> )):	0.277
Recovered D.W.L. After 1hr (m):	66.7
Recovered D.W.L. After 3hr (m):	11.01



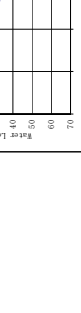
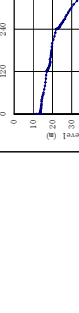
Analysis Results of Constant Discharge Rate Pumping Test

Q	1.4 m <sup>3</sup> /h
d <sub>1</sub> (m)	5.91035 d <sub>1</sub> (min)
d <sub>2</sub> (m)	5.33775 d <sub>2</sub> (min)
Screen Pipe Length (m)	11.80
L (m/min)	4.48
K (m <sup>3</sup> /m)	7.471E+04
K (m <sup>3</sup> /min)	0.333E+06
K (m <sup>3</sup> /d)	6.333E+06



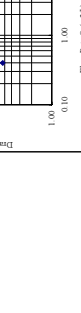
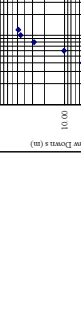
Step-Drawdown Test

Date:	22-Sep-10					
Static Water Level (m):	5.93					
Duration	Q	D.W.L. (m)	s (m)	Q's		
1	1.20	11.06	183.3	56.50	36.37	0.56
2	1.20	12.50	204.3	47.21	41.28	0.20
3	1.20	14.00	253.3	55.12	49.19	0.28
4	1.20	15.00	259	67.53	61.60	0.24



Analysis Results of Recovery Test

Q	1.4 m <sup>3</sup> /h
d <sub>1</sub> (m)	57.7601 d <sub>1</sub> (min)
d <sub>2</sub> (m)	35.6507 d <sub>2</sub> (min)
Screen Pipe Length (m)	35.6889
L (m/min)	1.80
K (m <sup>3</sup> /m)	1.14
K (m <sup>3</sup> /min)	1.851E+04
K (m <sup>3</sup> /d)	259.959
K (m <sup>3</sup> /min)	1.573E+06



Observation

BH No. TR-069BH1  
 Borehole No. 6642010

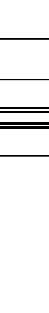
Mahama  
 Mahama  
 Tabona Rural

Drilling Results  
 Completion Date: 05-Sep-10  
 Static Water Level (m): 5.00  
 Screen Bottom (m): 75.7  
 Screen Position (m): 58.6-69.8



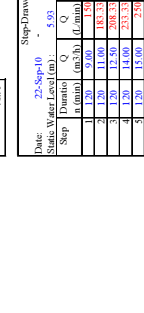
Constant Discharge Rate Pumping Test

Date:	25-Sep-10
Static Water Level (m):	5.00
Duration (min):	2800
Q (m <sup>3</sup> /h):	1.000
D.W.L. (m):	66.69
Specific Capacity (lit/2hr (m <sup>3</sup> )):	0.277
Recovered D.W.L. After 1hr (m):	66.7
Recovered D.W.L. After 3hr (m):	11.01



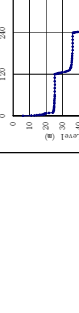
Analysis Results of Constant Discharge Rate Pumping Test

Q	1.4 m <sup>3</sup> /h
d <sub>1</sub> (m)	5.91035 d <sub>1</sub> (min)
d <sub>2</sub> (m)	5.33775 d <sub>2</sub> (min)
Screen Pipe Length (m)	11.80
L (m/min)	4.48
K (m <sup>3</sup> /m)	7.471E+04
K (m <sup>3</sup> /min)	0.333E+06
K (m <sup>3</sup> /d)	6.333E+06



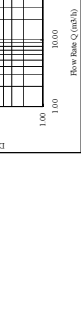
Step-Drawdown Test

Date:	22-Sep-10					
Static Water Level (m):	5.93					
Duration	Q	D.W.L. (m)	s (m)	Q's		
1	1.20	11.06	183.3	56.50	36.37	0.56
2	1.20	12.50	204.3	47.21	41.28	0.20
3	1.20	14.00	253.3	55.12	49.19	0.28
4	1.20	15.00	259	67.53	61.60	0.24



Analysis Results of Recovery Test

Q	1.4 m <sup>3</sup> /h
d <sub>1</sub> (m)	57.7601 d <sub>1</sub> (min)
d <sub>2</sub> (m)	35.6507 d <sub>2</sub> (min)
Screen Pipe Length (m)	35.6889
L (m/min)	1.80
K (m <sup>3</sup> /m)	1.14
K (m <sup>3</sup> /min)	1.851E+04
K (m <sup>3</sup> /d)	259.959
K (m <sup>3</sup> /min)	1.573E+06



Observation

マバマ村 2号井

マバマ村 1号井

図-4 揚水試験結果 (5/6)

BH No. IG-07BH11  
 Borehole No. 67521011  
 Date of Submission 28-Oct-08  
 Contractor JDDCA

Village Iguno  
 Ward Chabutava  
 District/Municipality Iguga

Well Structure

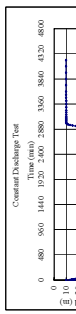
Drilling Results

Completion Date	28-Sep-10
Static Water Level (m)	3.00
Screen Length (m)	7.8
Screen Position (m-m)	662.7-72.1

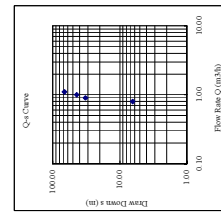
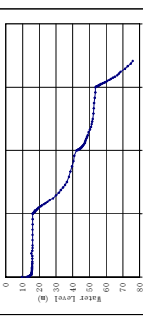
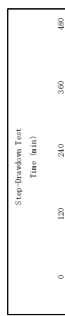
Completion Date	28-Sep-10
Static Water Level (m)	3.00
Screen Length (m)	7.8
Screen Position (m-m)	662.7-72.1

Constant Discharge Rate Pumping Test

Static Water Level (m)	37.5-24.0
Duration (min)	2800
Q (m <sup>3</sup> /h)	16.6
D.W.L. (m)	10.1
S.W.L. after 12 hr (m)	49.93
S.W.L. after 24 hr (m)	44.51
S.W.L. after 36 hr (m)	39.21
Recovered D.W.L. After 180m	1.776



Date	27-Oct-10	D.W.L. (m)	5 (m)	Q's (m <sup>3</sup> /h)
Step	Duration (min)	Q (m <sup>3</sup> /h)	D (m)	Q's (m <sup>3</sup> /h)
1	1:30	1.15	16.03	6.42
2	1:20	0.90	21.19	32.38
3	1:20	1.00	16.67	44.02
4	1:10	1.10	18.33	66.96
5	1:10	1.10	18.33	93.01



Observation

BH No. TL-08BH1  
 Borehole No. 66321010  
 Date of Submission 28-Oct-08  
 Contractor JDDCA

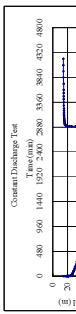
Village Kichib  
 Ward Kichib  
 District/Municipality Taban Urban

Well Structure

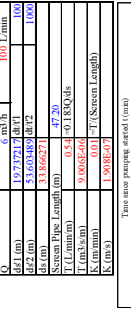
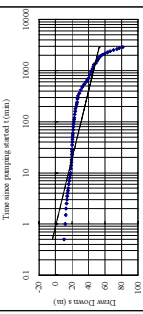
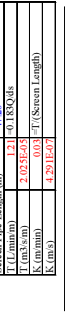
Drilling Results

Completion Date	31-Mar-10
Static Water Level (m)	14.30
Screen Length (m)	1.02
Screen Position (m-m)	28.25-43.95, 48.90-58.80, 60.39-69.28, 70.40-84.56, 91.29-96.16

Completion Date	31-Mar-10
Static Water Level (m)	14.30
Screen Length (m)	1.02
Screen Position (m-m)	28.25-43.95, 48.90-58.80, 60.39-69.28, 70.40-84.56, 91.29-96.16



Date	2-Oct-10	D.W.L. (m)	4 (m)	Q's (m <sup>3</sup> /h)
Step	Duration (min)	Q (m <sup>3</sup> /h)	D (m)	Q's (m <sup>3</sup> /h)
1	3:30	4.33	18.84	4.78
2	5:10	5.85	23.64	11.35
3	5:20	5.90	31.70	17.64
4	1:20	6.70	111.67	62.54
5	1:20	7.70	128.33	97.28



Observation

BH No. TL-08BH1  
 Borehole No. 66321010  
 Date of Submission 28-Oct-08  
 Contractor JDDCA

Village Kichib  
 Ward Kichib  
 District/Municipality Taban Urban

Well Structure

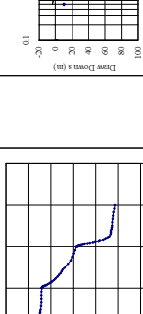
Drilling Results

Completion Date	31-Mar-10
Static Water Level (m)	14.30
Screen Length (m)	1.02
Screen Position (m-m)	28.25-43.95, 48.90-58.80, 60.39-69.28, 70.40-84.56, 91.29-96.16

Completion Date	31-Mar-10
Static Water Level (m)	14.30
Screen Length (m)	1.02
Screen Position (m-m)	28.25-43.95, 48.90-58.80, 60.39-69.28, 70.40-84.56, 91.29-96.16



Date	2-Oct-10	D.W.L. (m)	4 (m)	Q's (m <sup>3</sup> /h)
Step	Duration (min)	Q (m <sup>3</sup> /h)	D (m)	Q's (m <sup>3</sup> /h)
1	3:30	4.33	18.84	4.78
2	5:10	5.85	23.64	11.35
3	5:20	5.90	31.70	17.64
4	1:20	6.70	111.67	62.54
5	1:20	7.70	128.33	97.28



Observation

イグモ村 1号井

カコラ村 1号井

図-4 揚水試験結果 (6/6)