

図.2.4.9 探査実施地点 (ンゼガ県キタンギリ村)

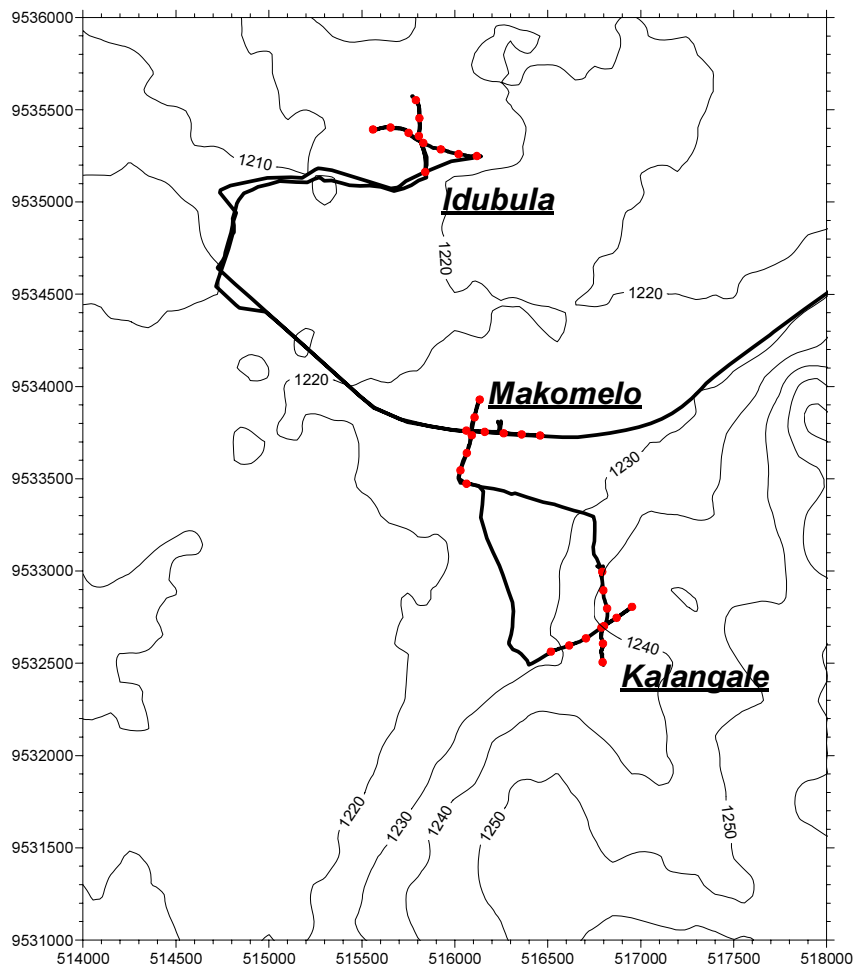


図.2.4.10 探査実施地点 (ンゼガ県マコモロ村)

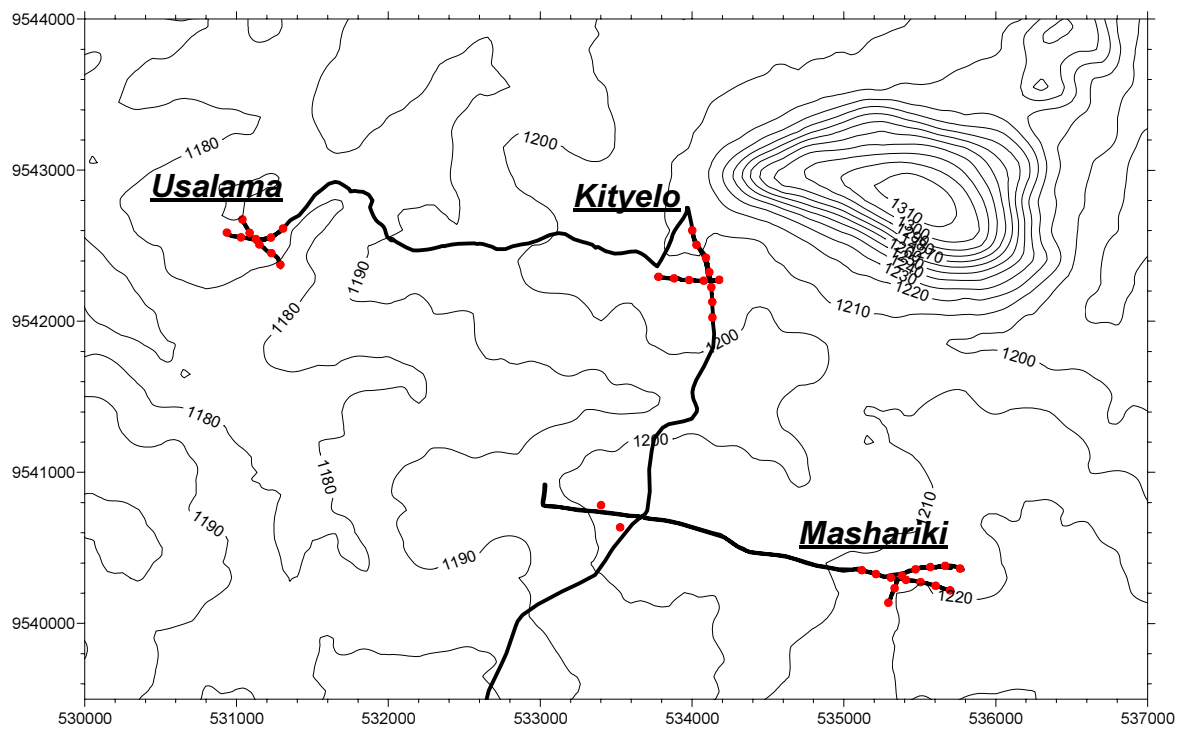


図.2.4.11 探査実施地点 (ンゼガ県ウエラ村)

第2章 物理探査

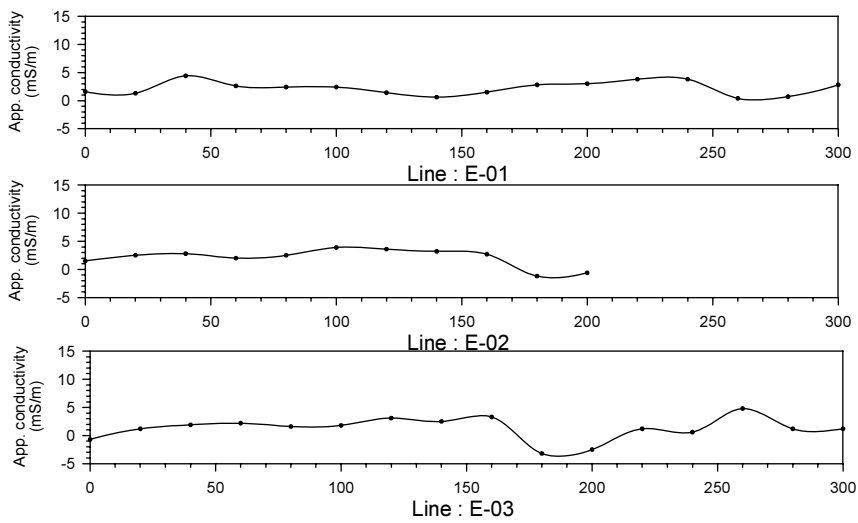
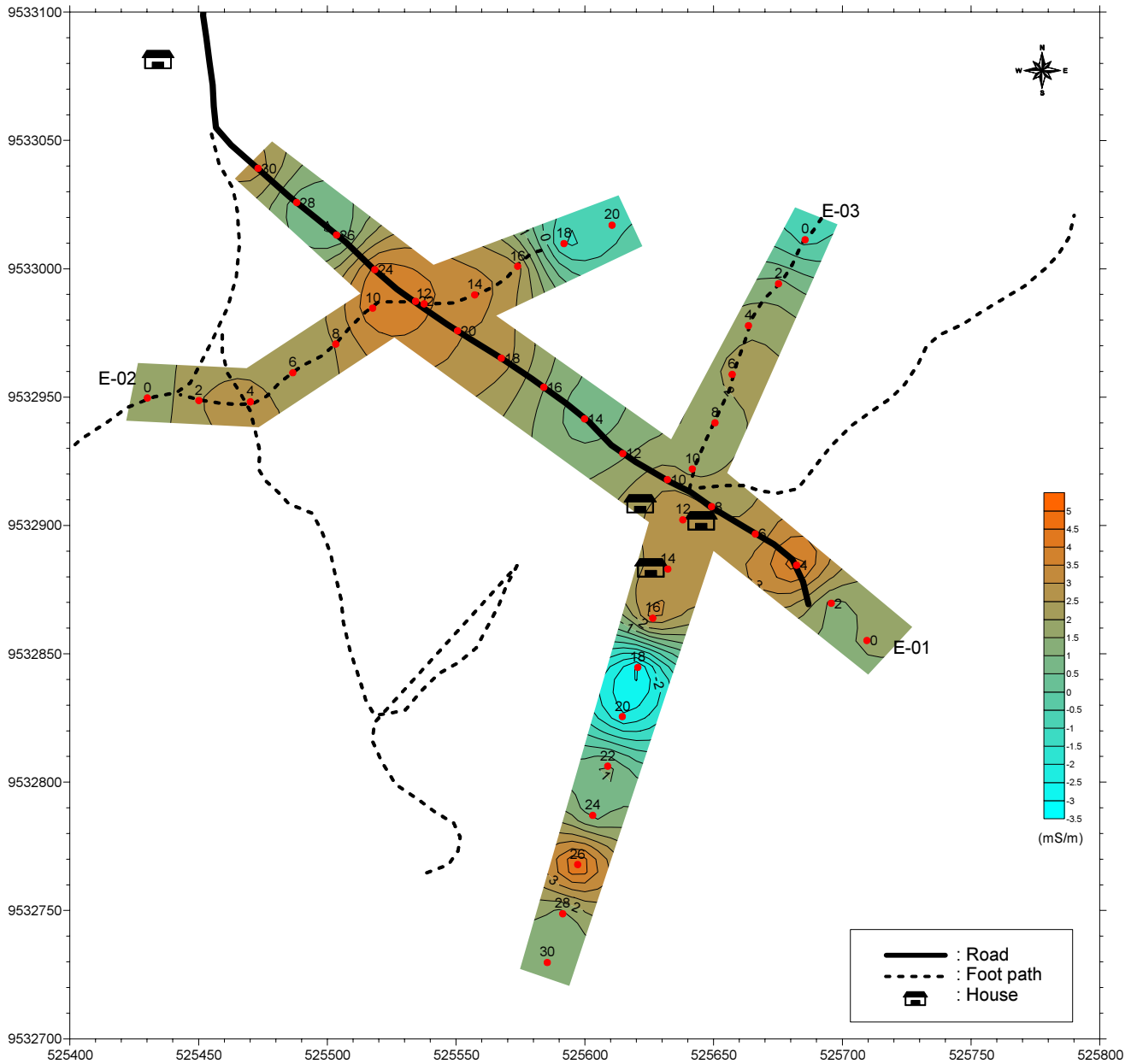


図.2.4.12 探査結果 (ンゼガ県キタンギリ村 Bukoli sub-village)

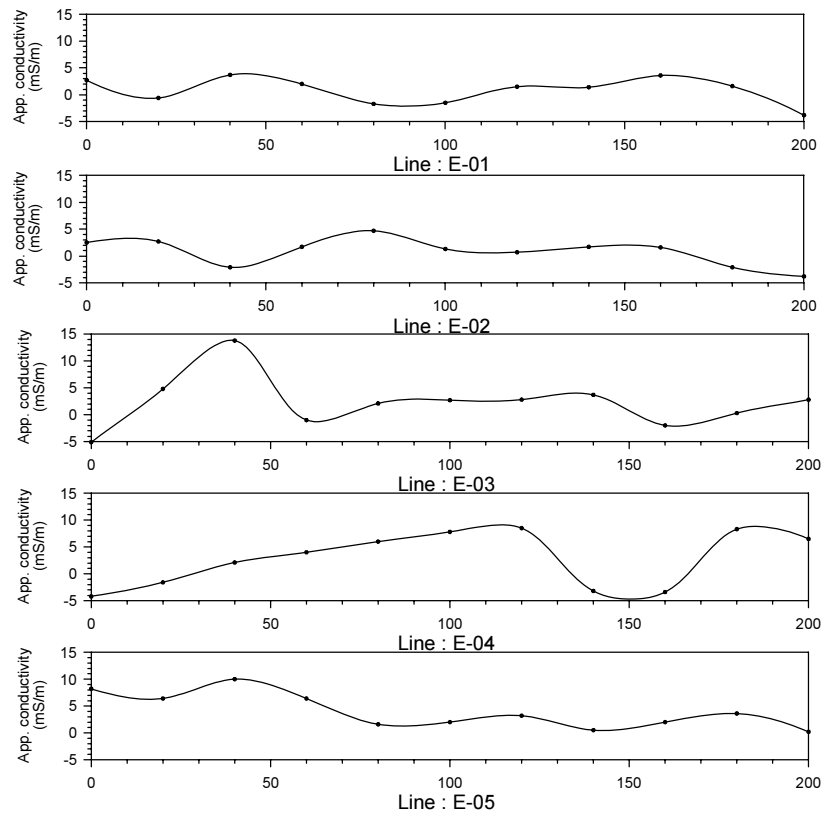
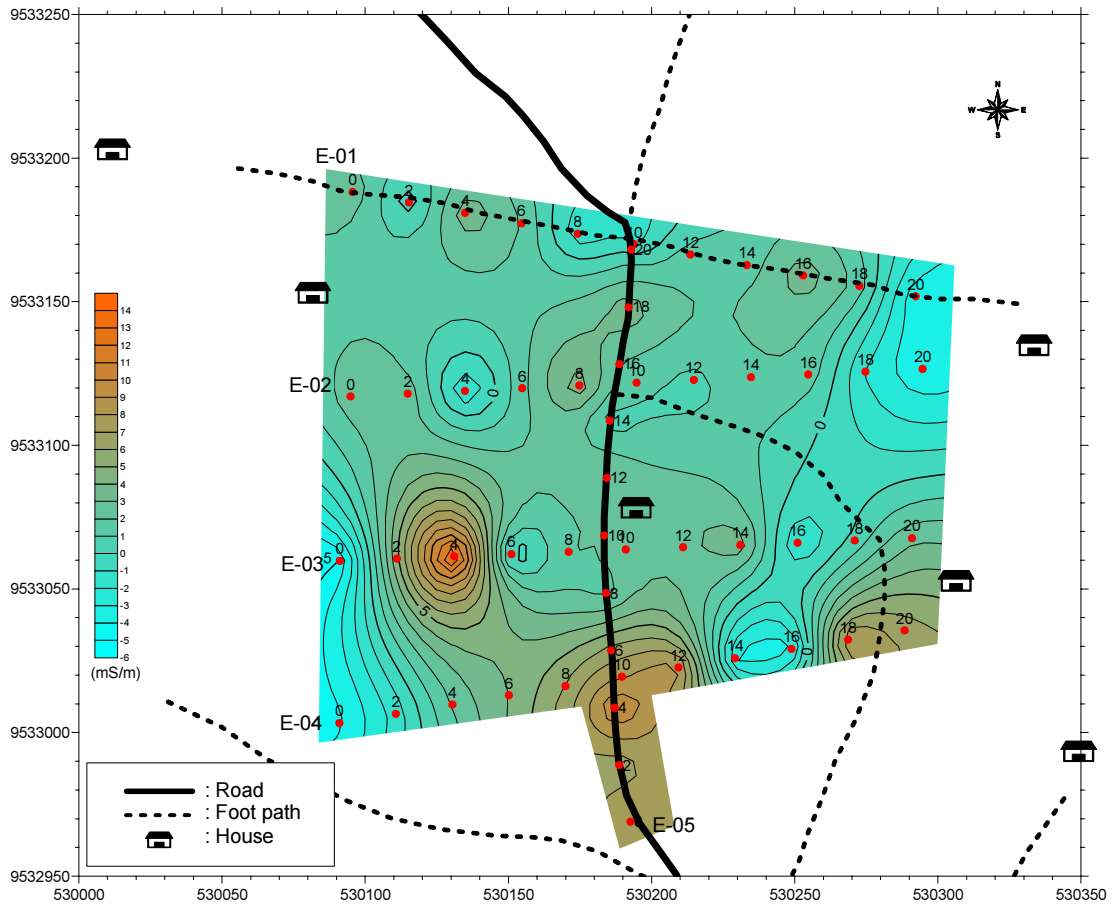


図.2.4.13 探査結果 (ンゼガ県キタンギリ村 Shandu sub-village)

第2章 物理探査

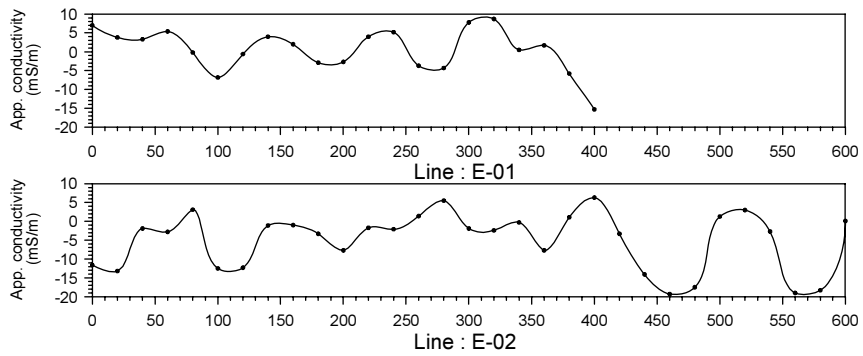
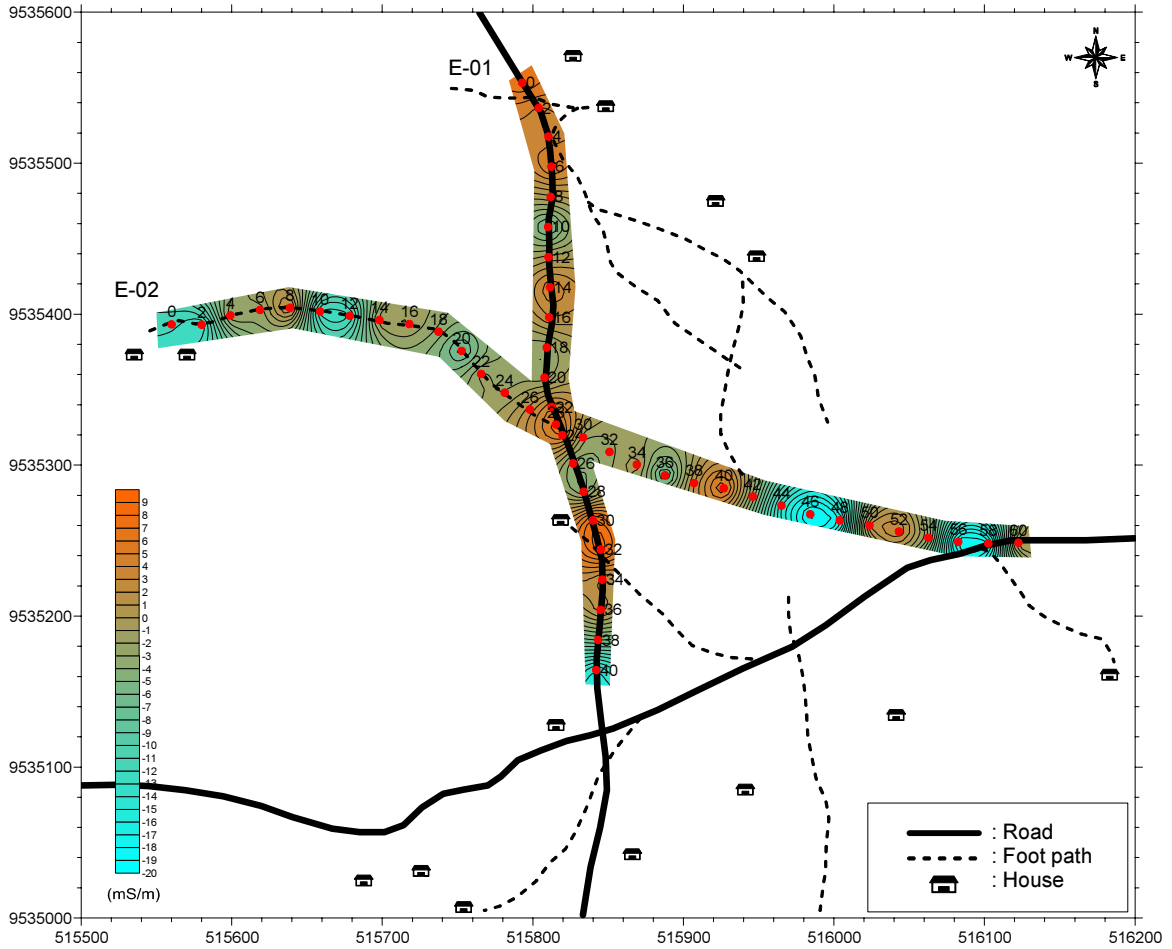


図.2.4.14 探査結果 (ンゼガ県マコメロ村 Idubula sub-village)

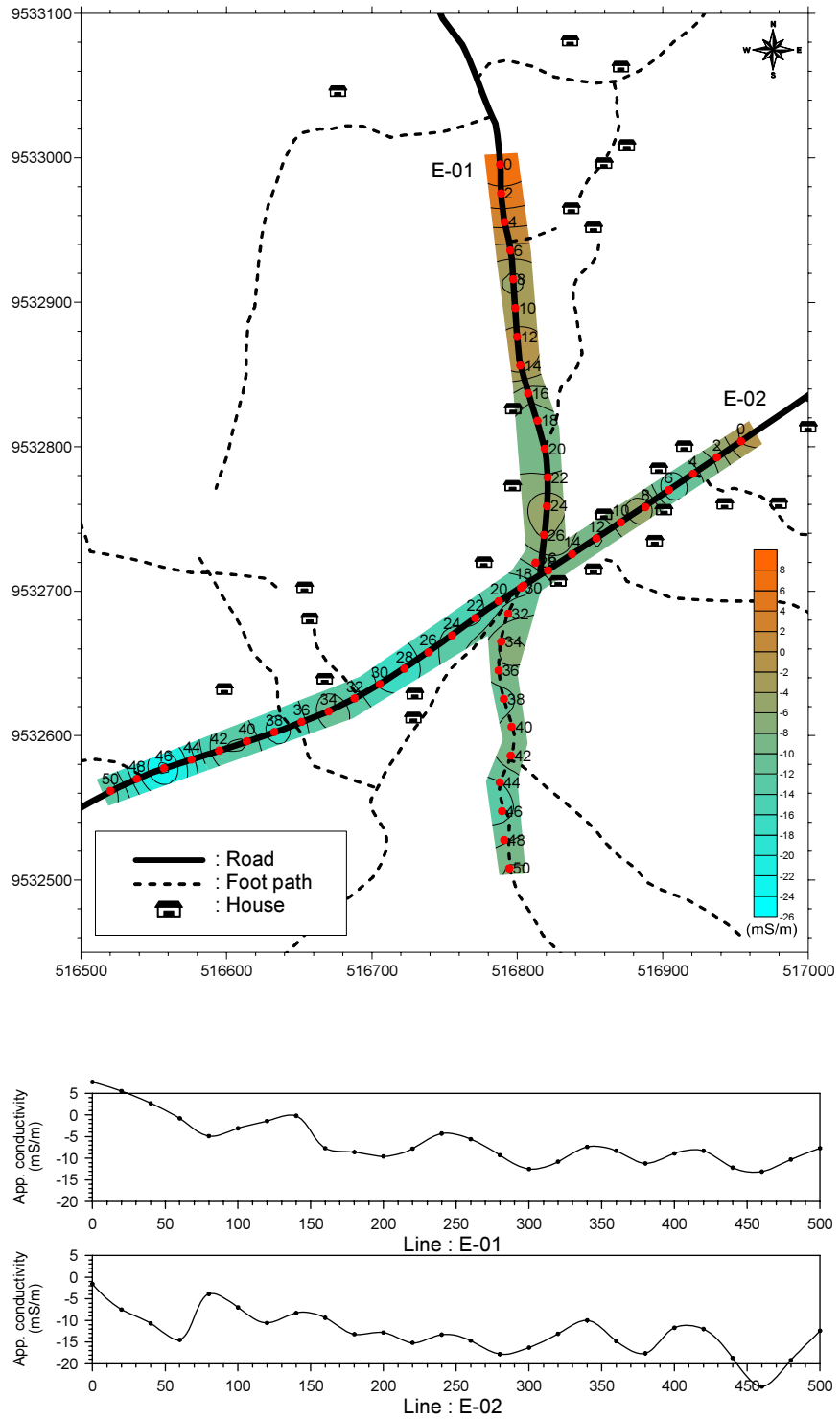


図.2.4.15 探査結果 (ンゼガ県マコモロ村 Kalangale sub-village)

第2章 物理探査

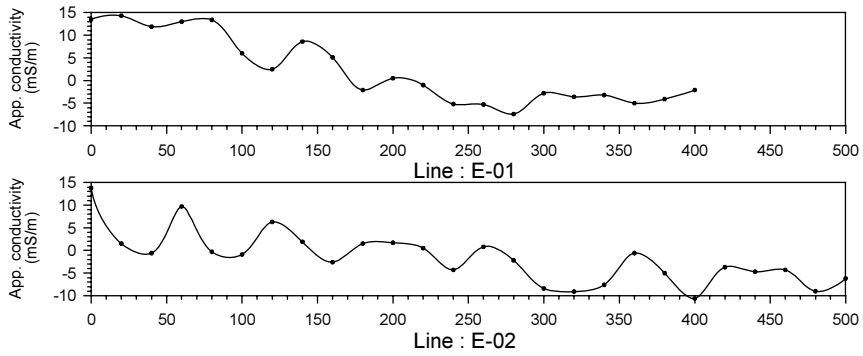
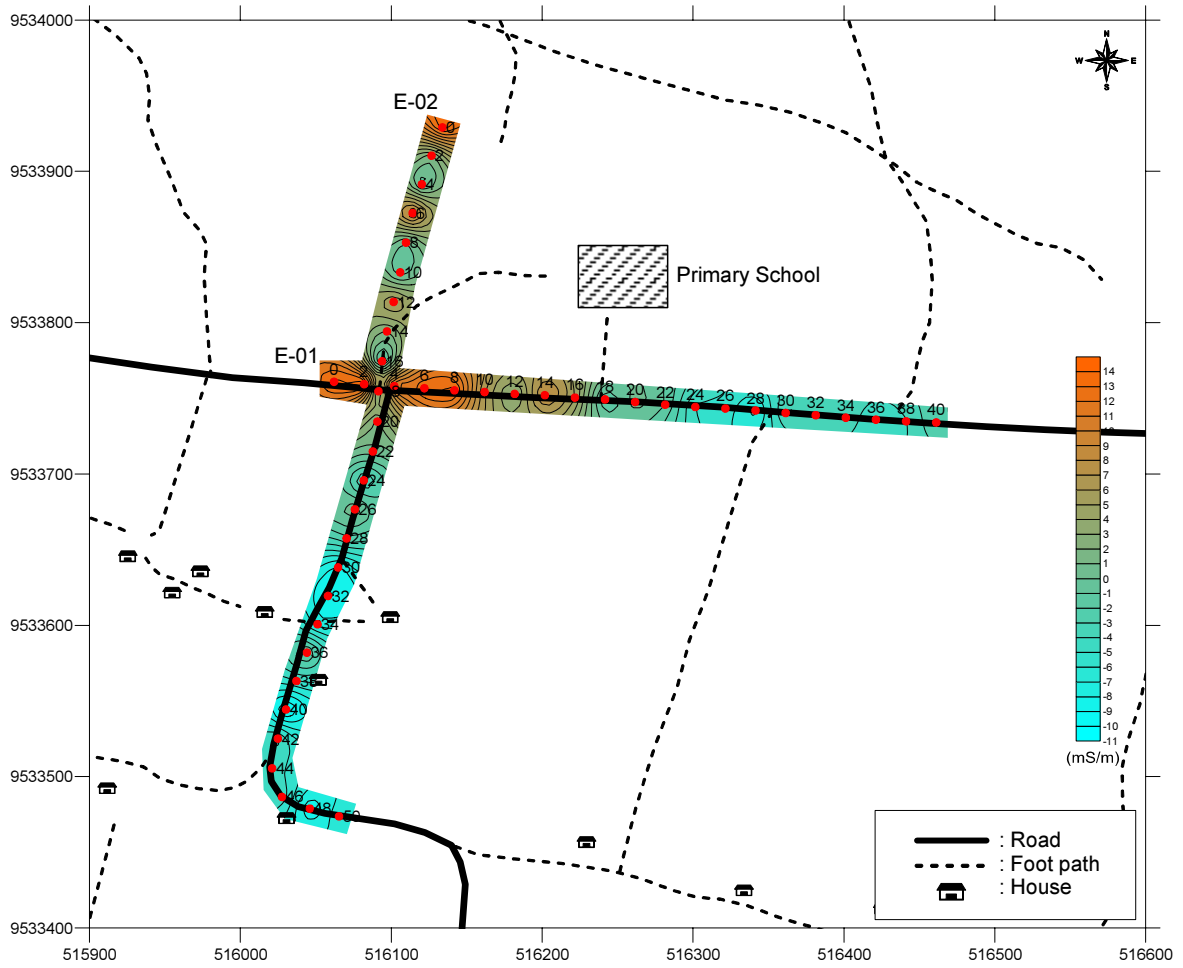


図.2.4.16 探査結果 (ンゼガ県マコメロ村 Makomelo sub-village)

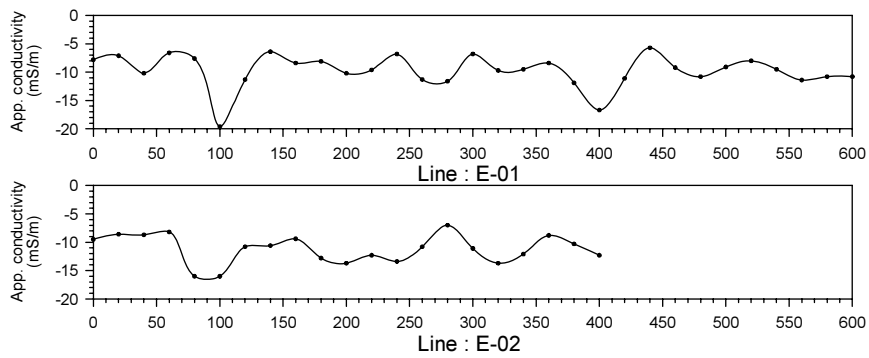
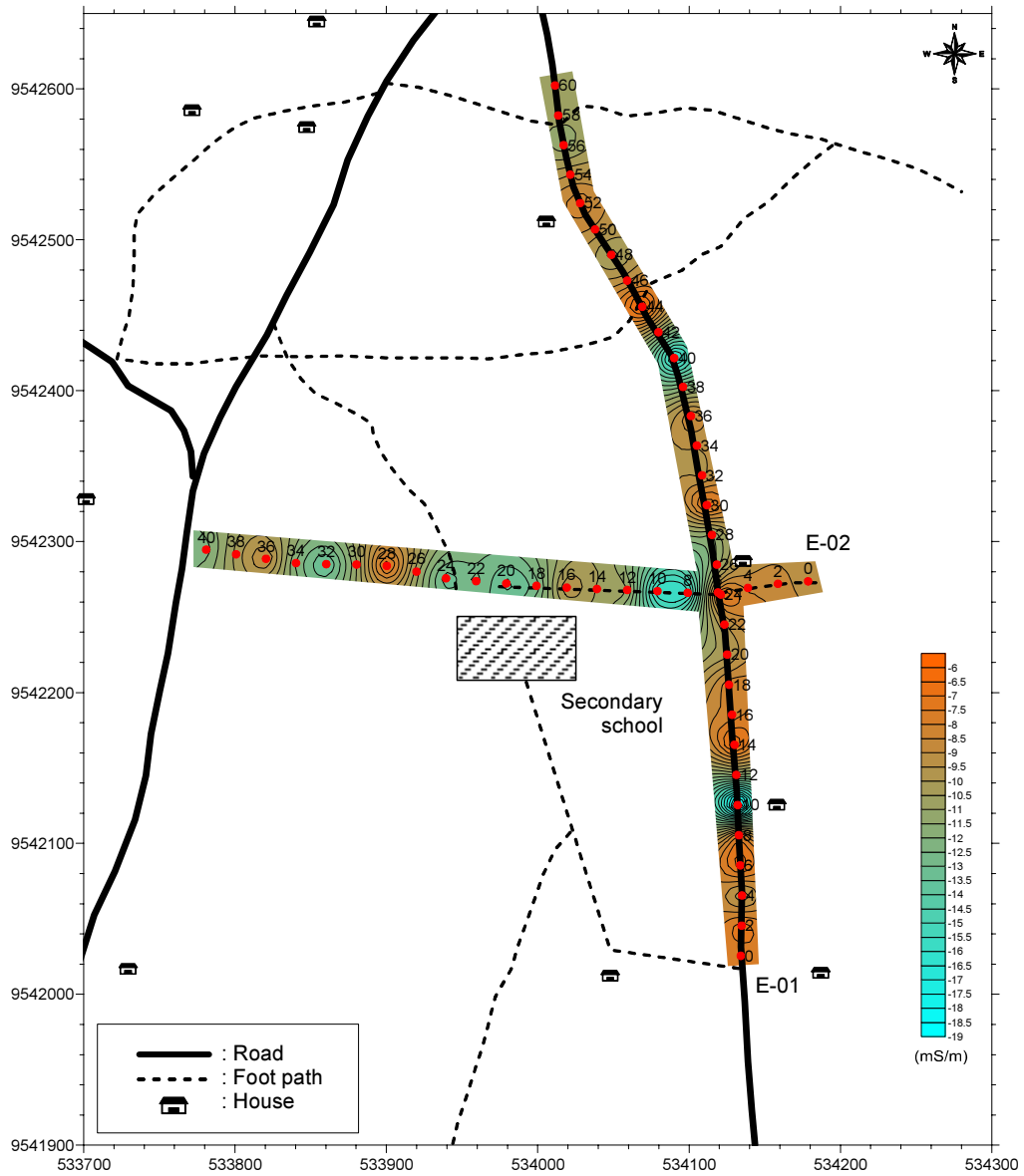


図.2.4.17 探査結果 (ンゼガ県ウエラ村 Kityelo sub-village)



第2章 物理探査

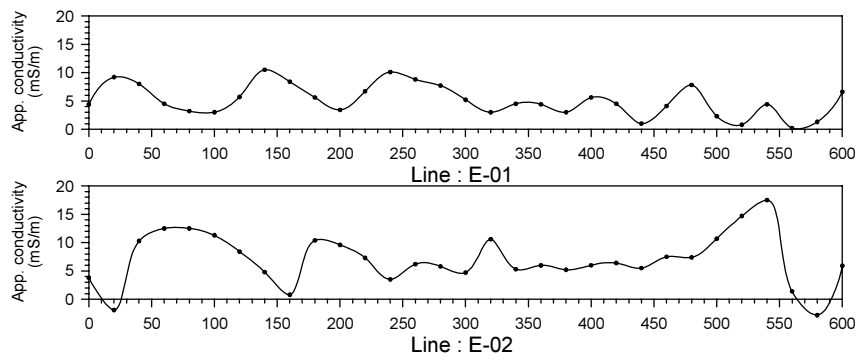
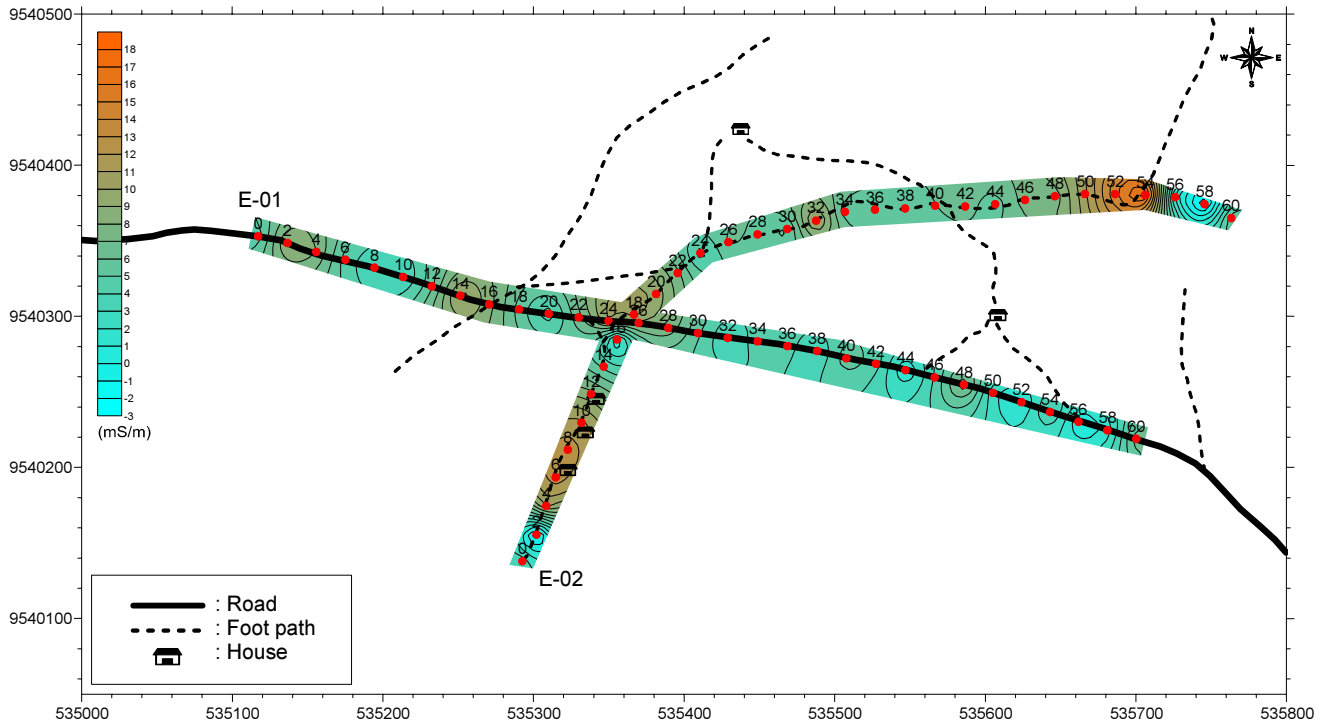


図.2.4.18 探査結果 (ンゼガ県ウエラ村 Mashariki sub-village)

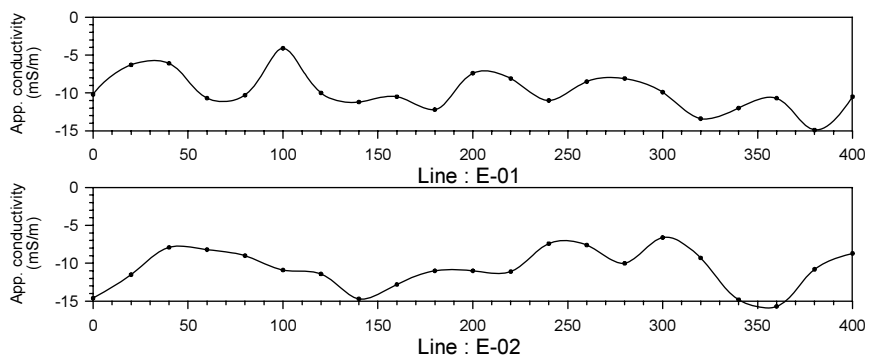
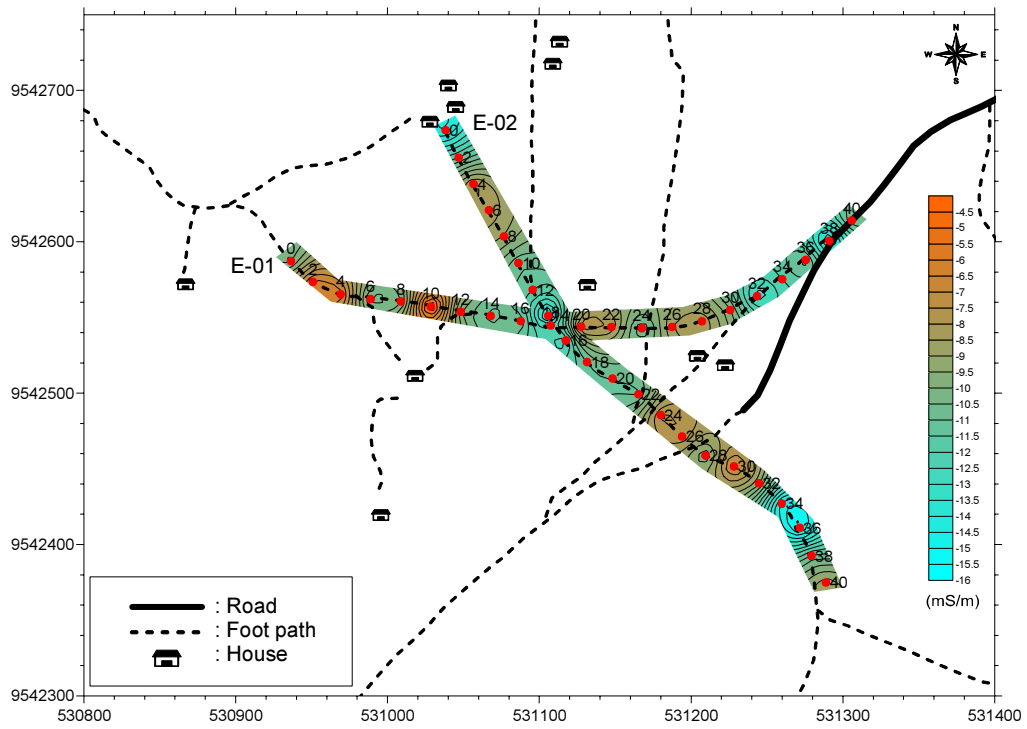


図.2.4.19 探査結果 (ンゼガ県ウエラ村 Usalama sub-village)

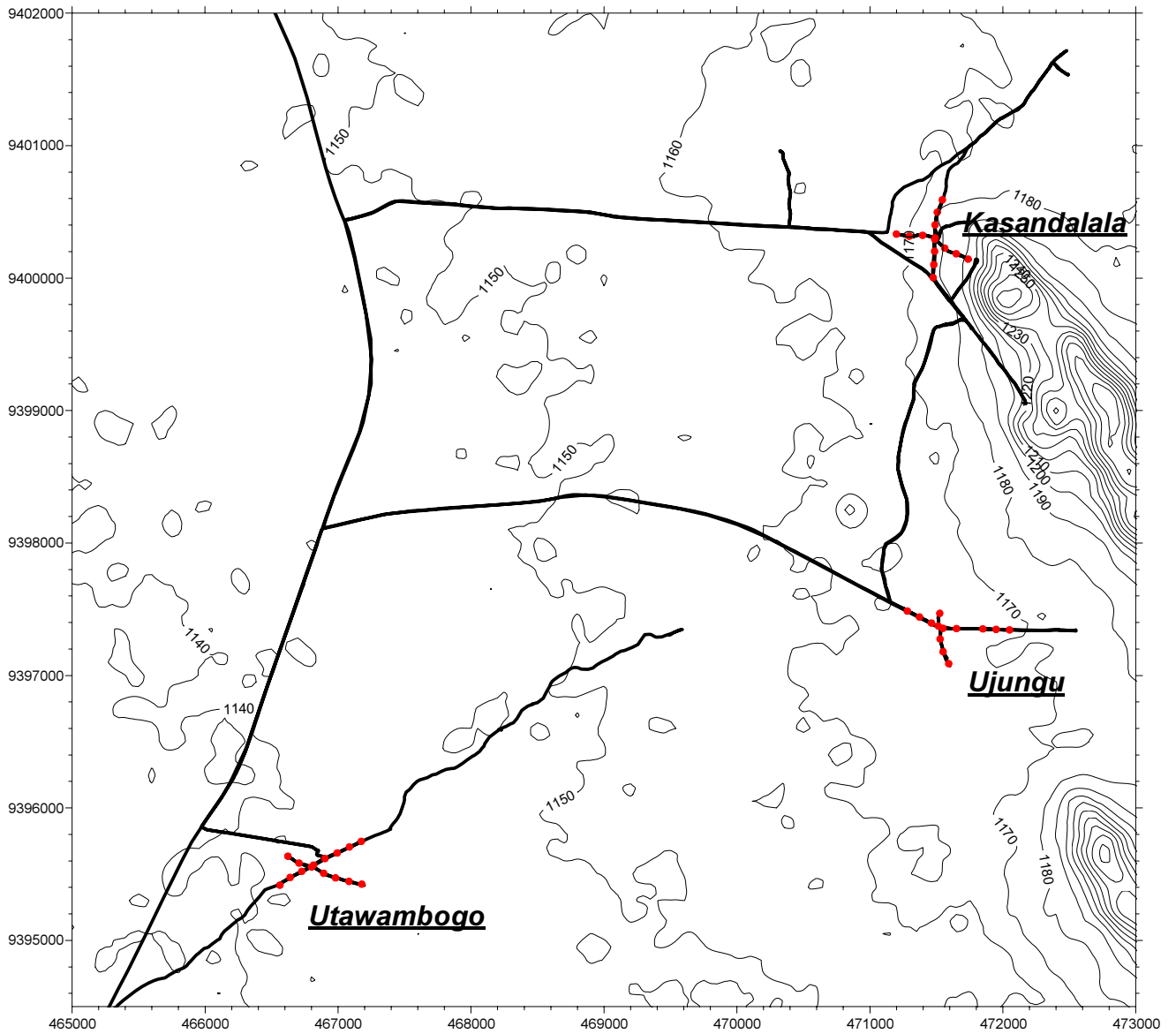


図.2.4.20 探査実施地点 (シコンゲ県カサンダララ村)

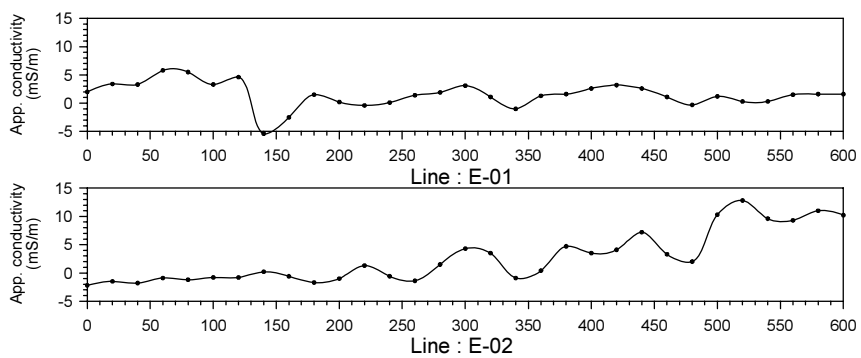
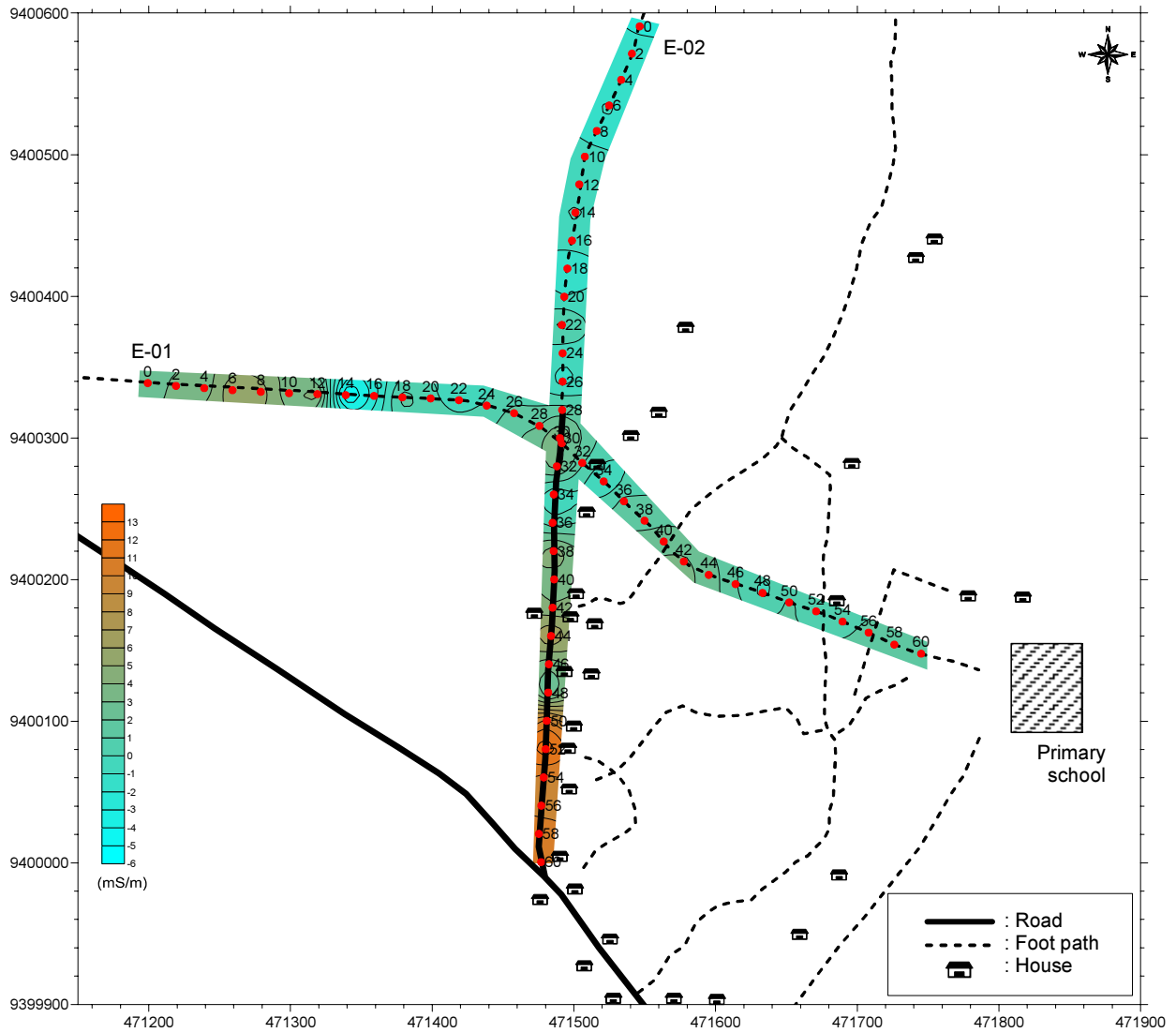


図.2.4.21 探査結果 (シコンゲ県カサンダラ村 Kasandalala sub-village)

第2章 物理探査

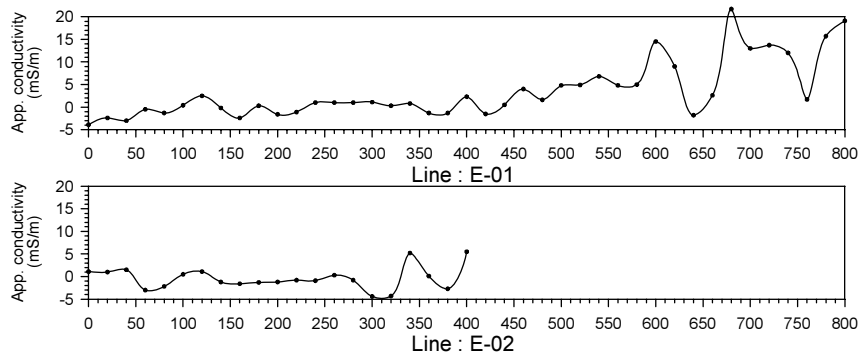
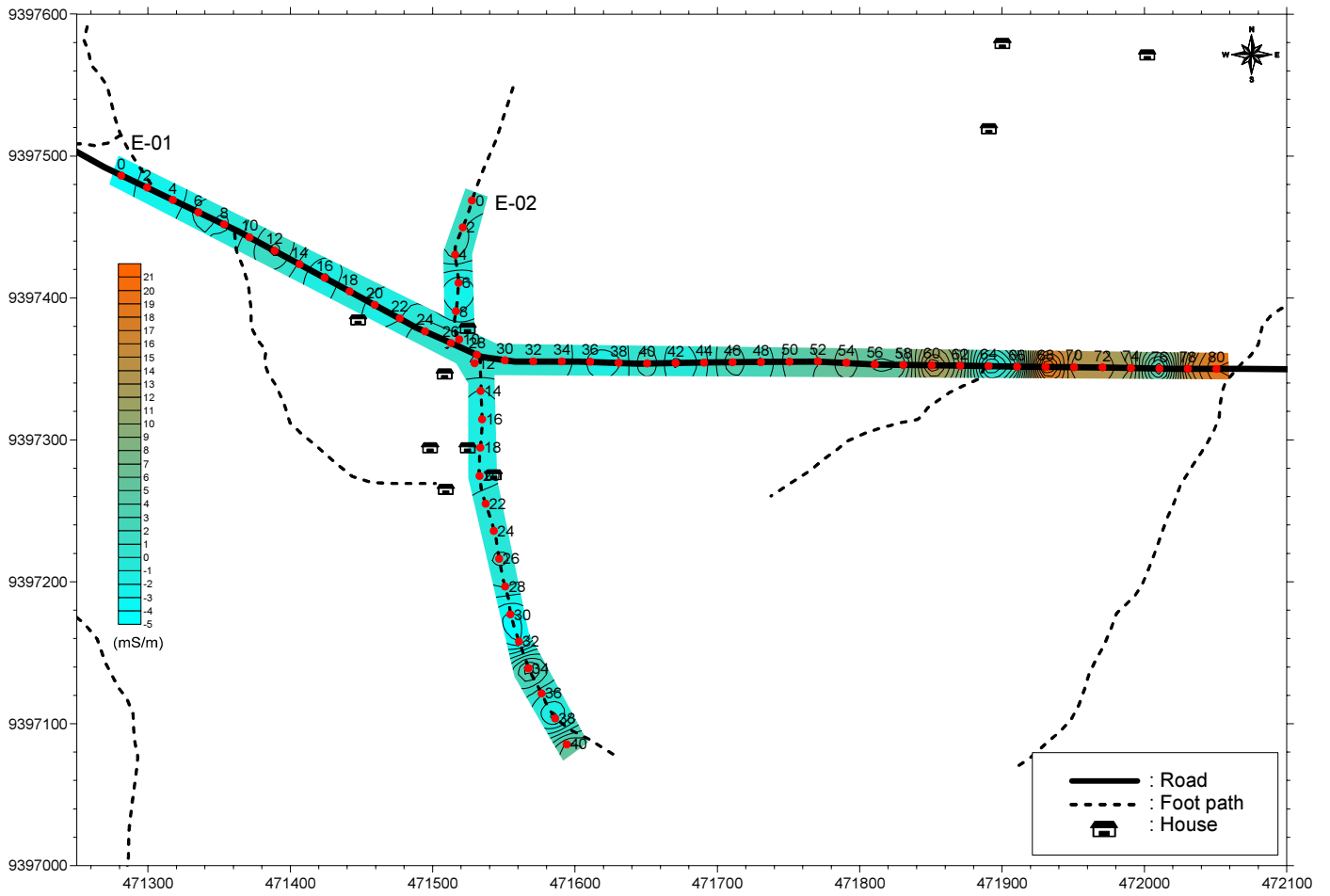


図.2.4.22 探査結果 (シコンゲ県カサンダララ村 Ujungu sub-village)

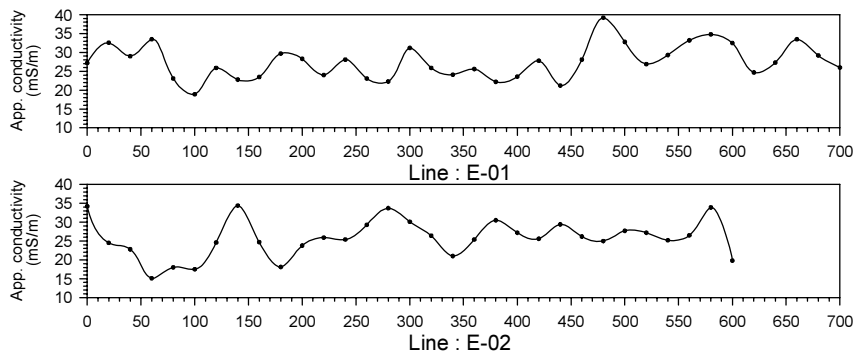
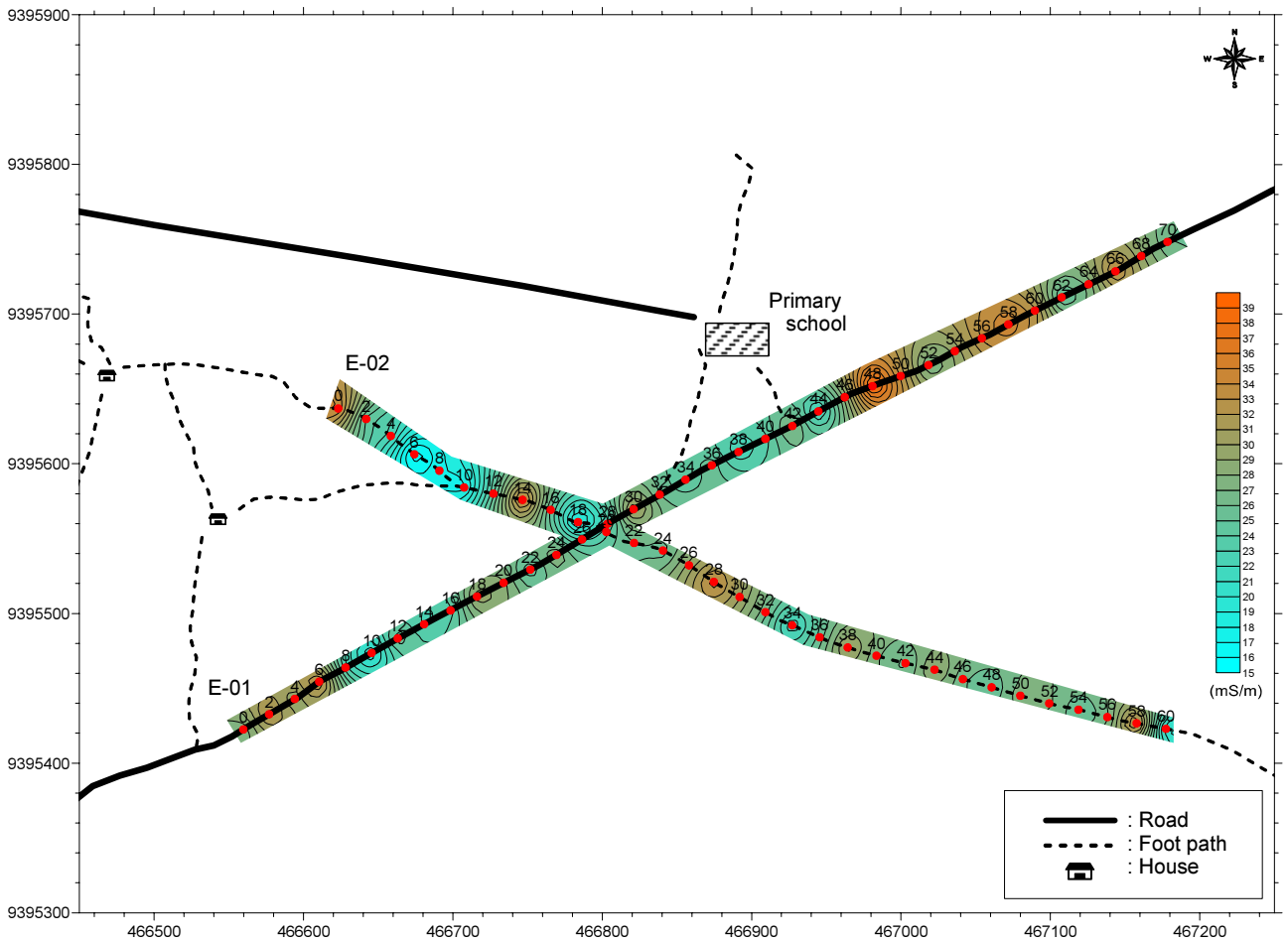


図.2.4.23 探査結果 (シコンゲ県カサンダラ村 Utawambogo sub-village)

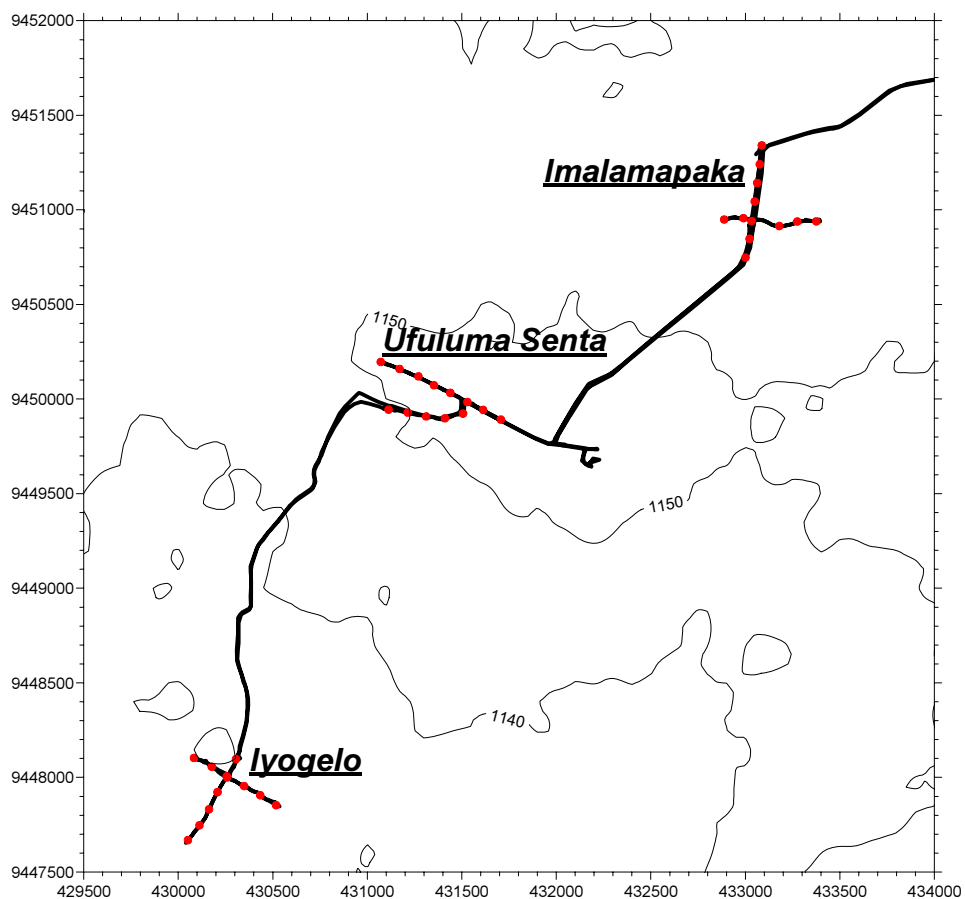


図.2.4.24 探査実施地点 (タボラ・ルーラル県ウフルマ村)

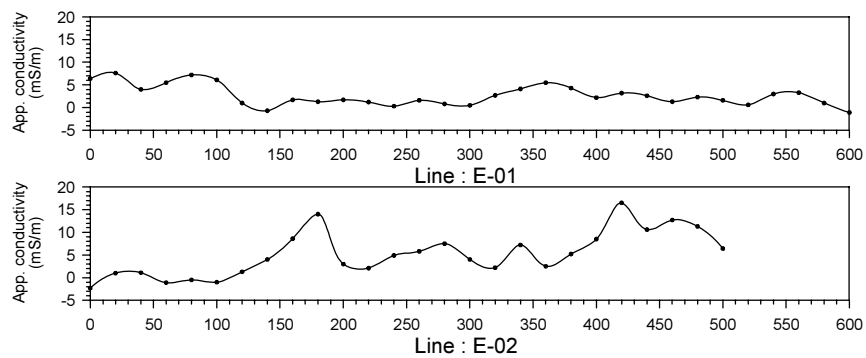
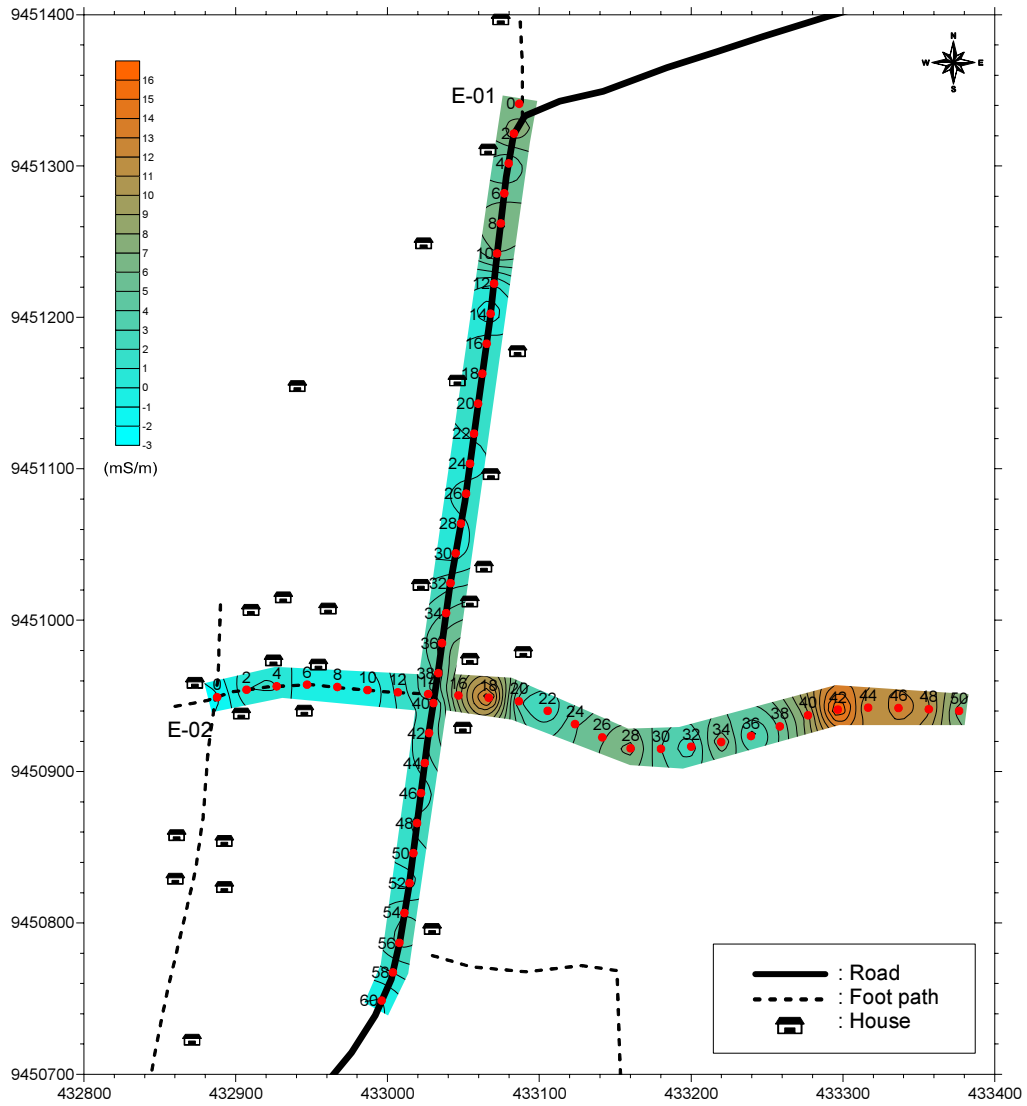


図.2.4.25 探査結果 (タボラ・ルーラル県ウフルマ村)



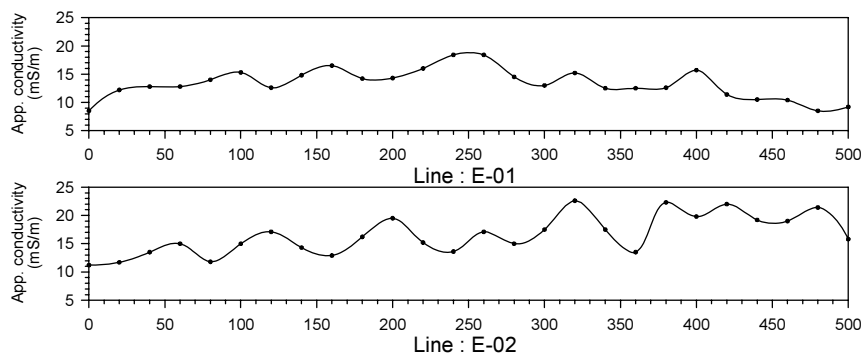
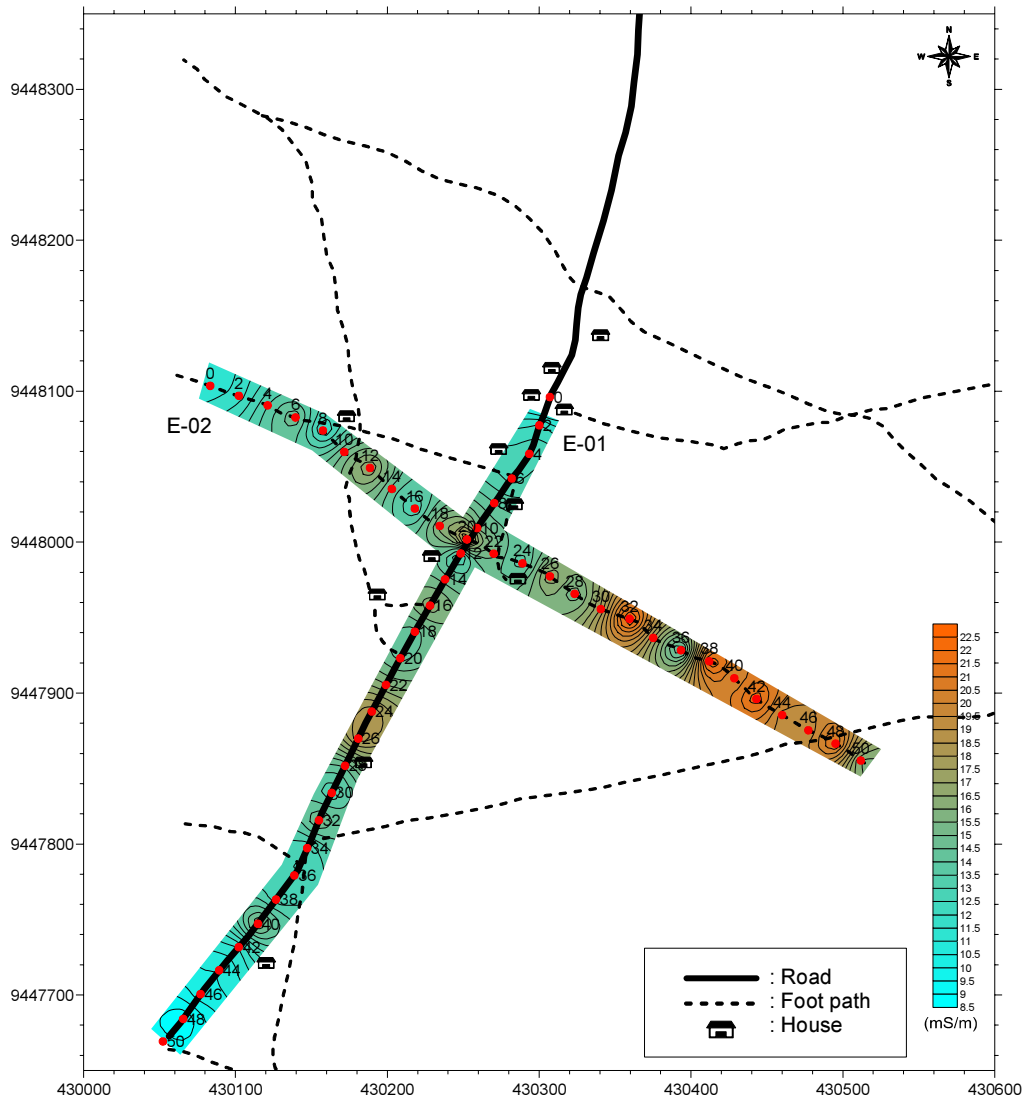


図.2.4.26 探査結果 (タボラ・ルーラル県ウフルマ村 Iyogelo sub-village)

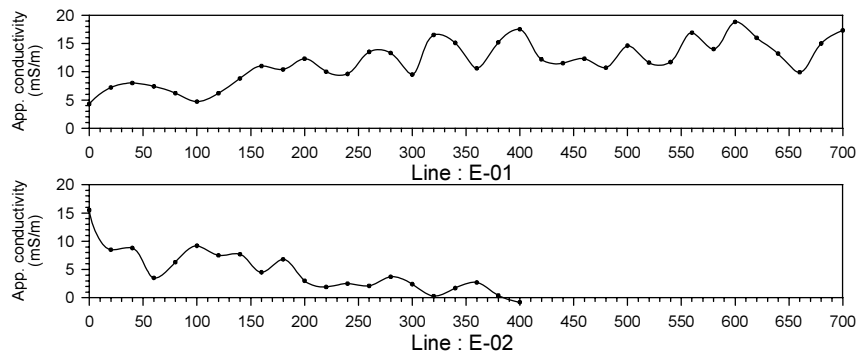
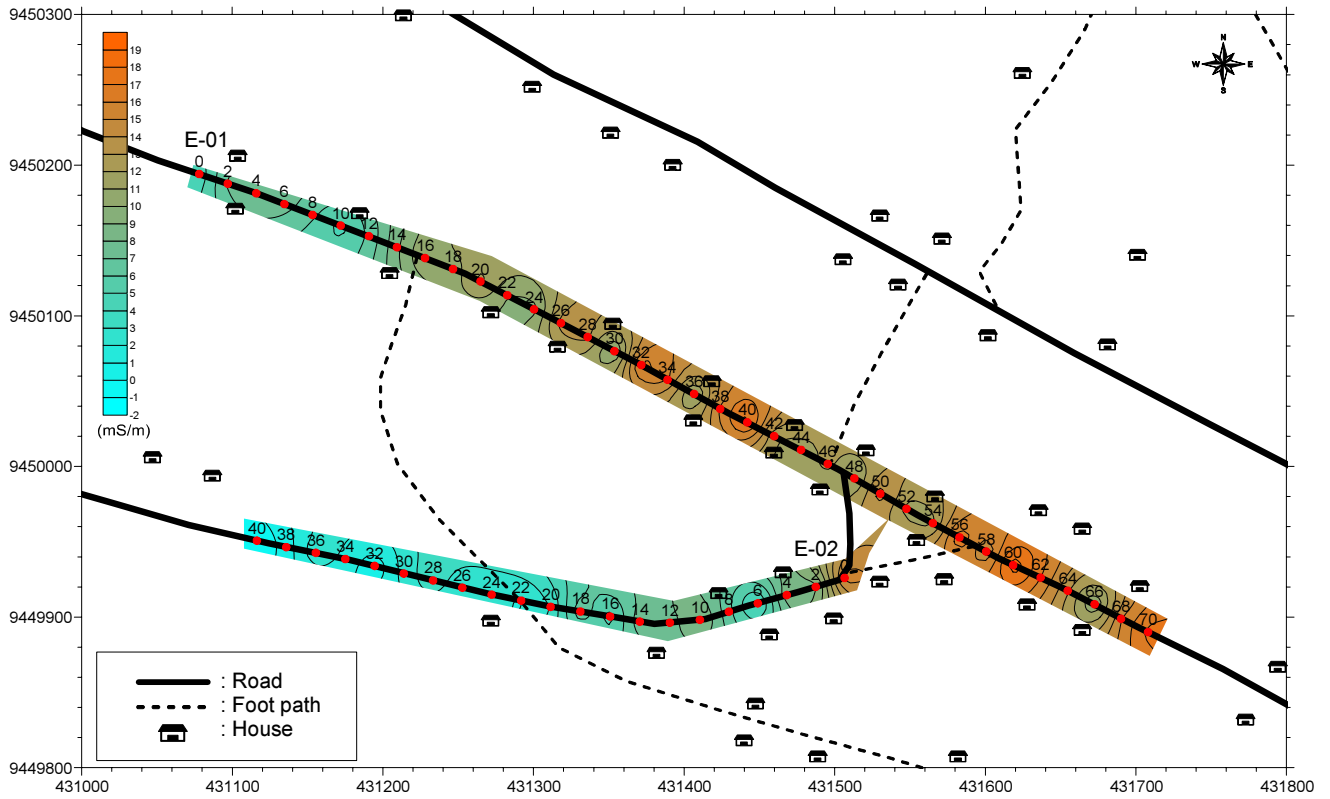


図.2.4.27 探査結果 (タボラ・ルーラル県ウフルマ村 Ufuluma Senta sub-village)

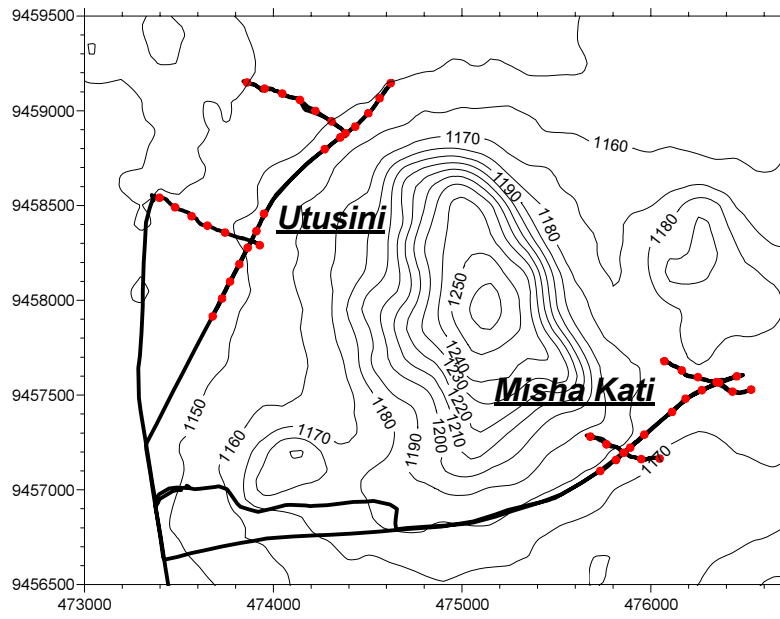


図.2.4.28 探査実施地点 (タボラ市ミシャ村)

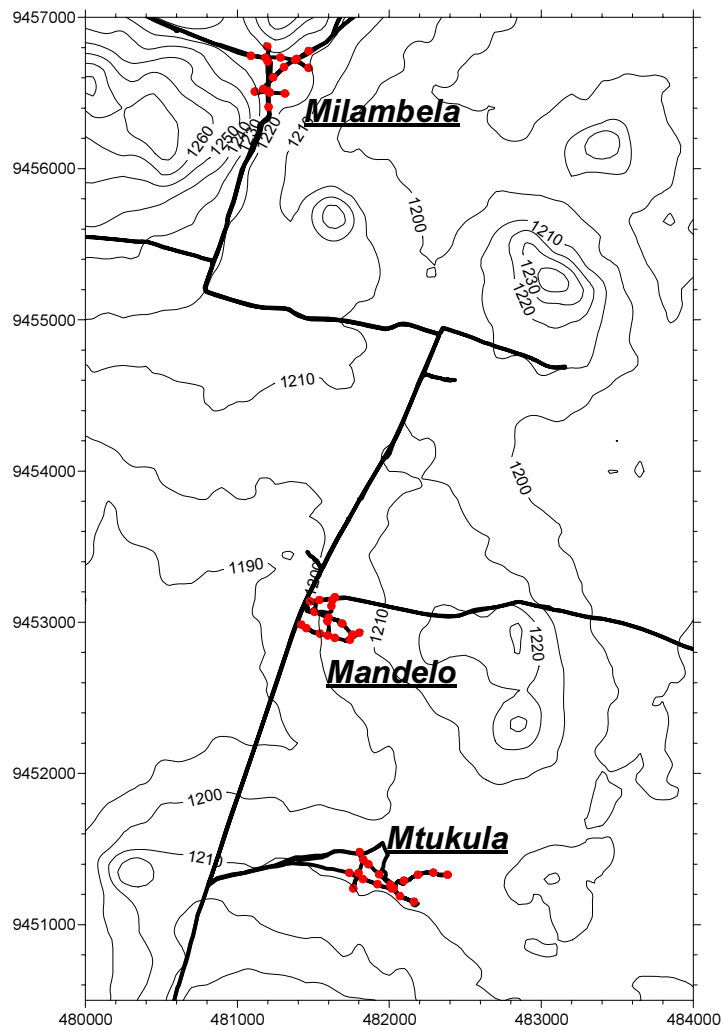


図.2.4.29 探査実施地点 (タボラ市ウエイ村)

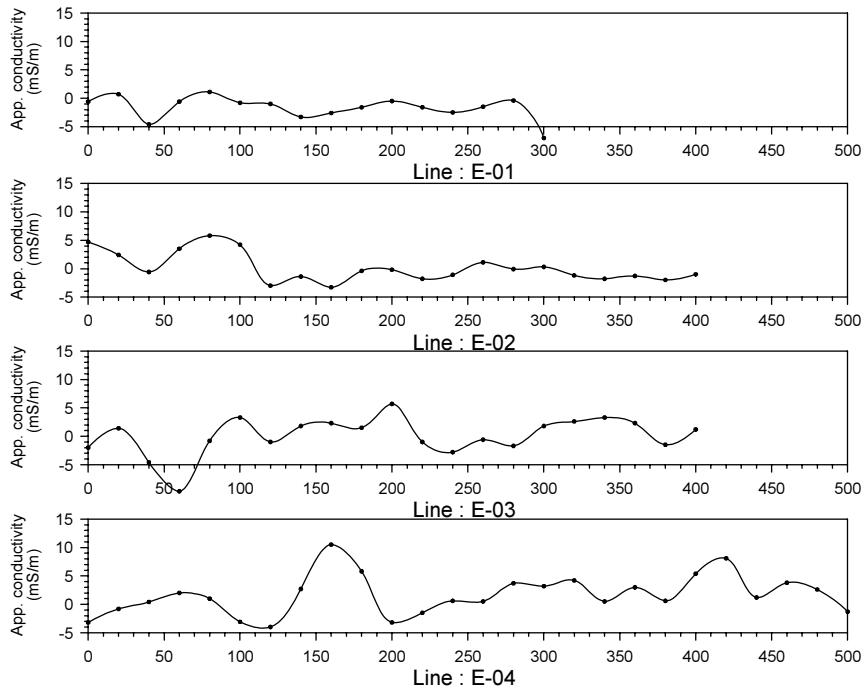
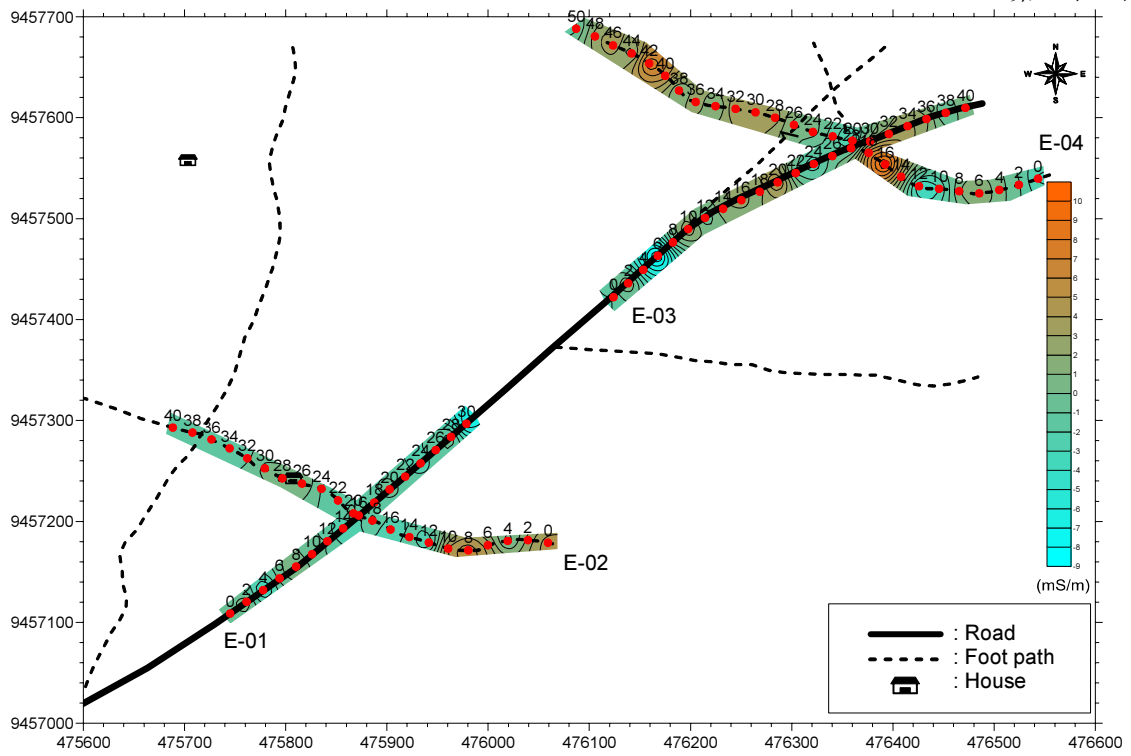


図.2.4.30 探査結果 (タボラ市ミシャ村 Misha Kati sub-village )

第2章 物理探査

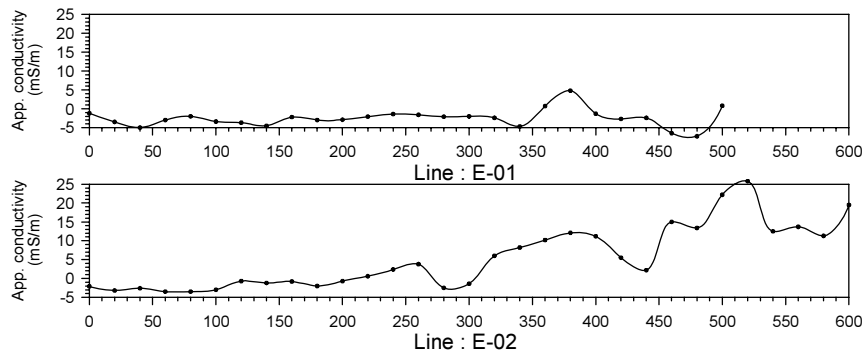
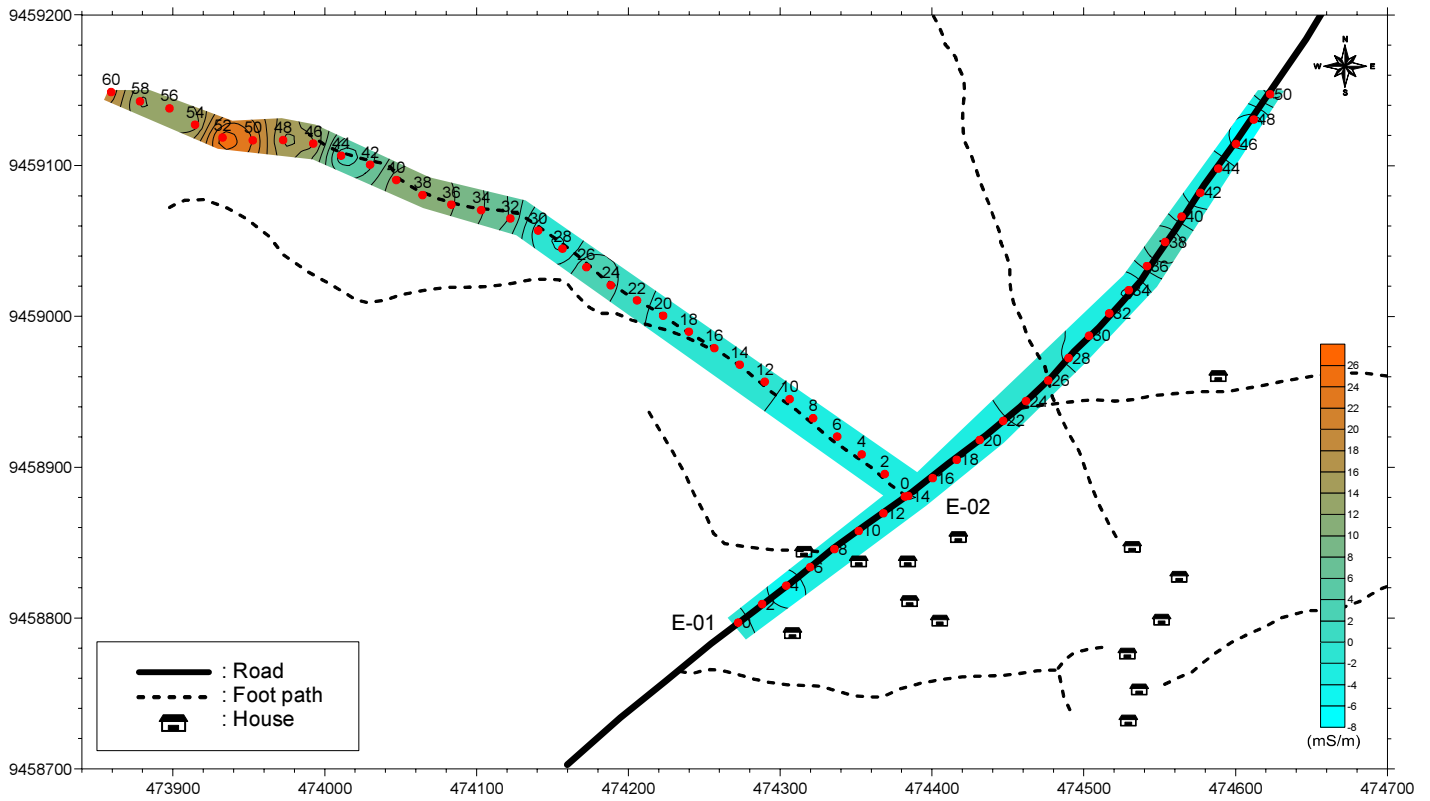


図.2.4.31 探査結果 (タボラ市ミシャ村 Utusini sub-village)

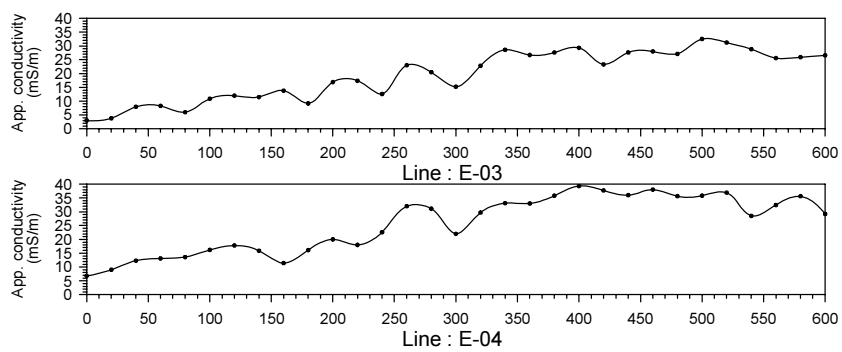
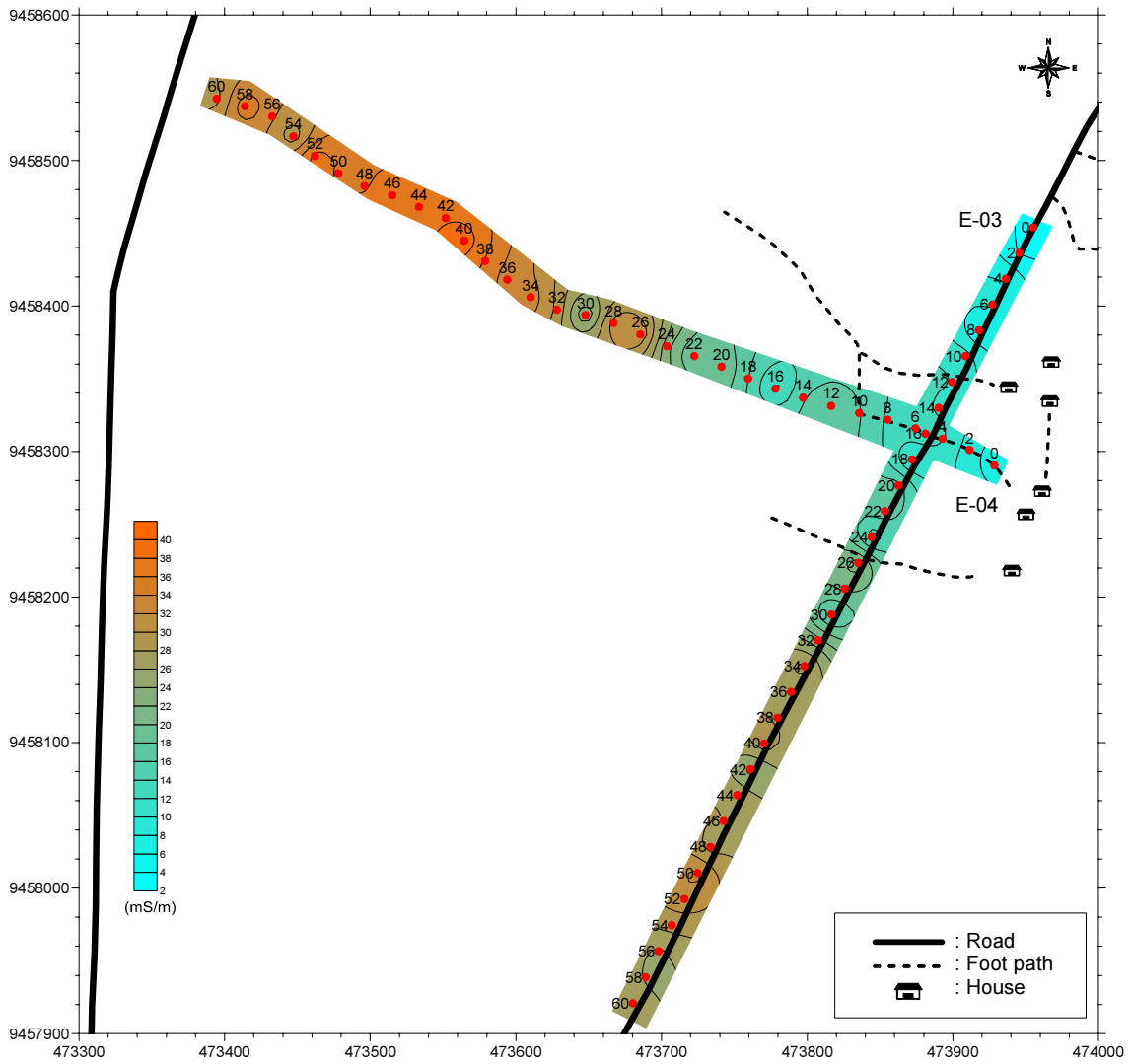


図.2.4.32 探査結果 (タボラ市ミシヤ村 Utusini sub-village 南部)

第2章 物理探査

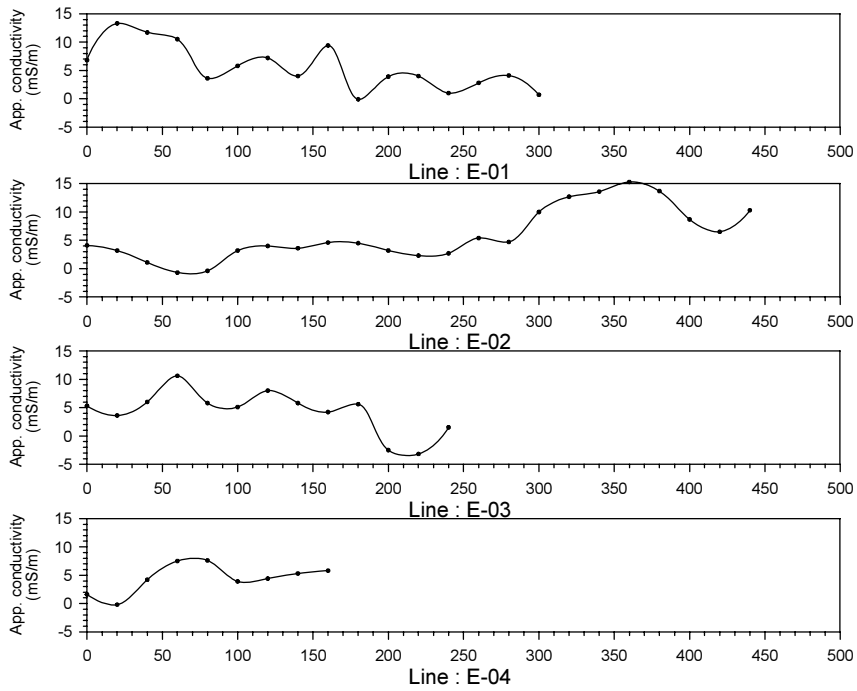
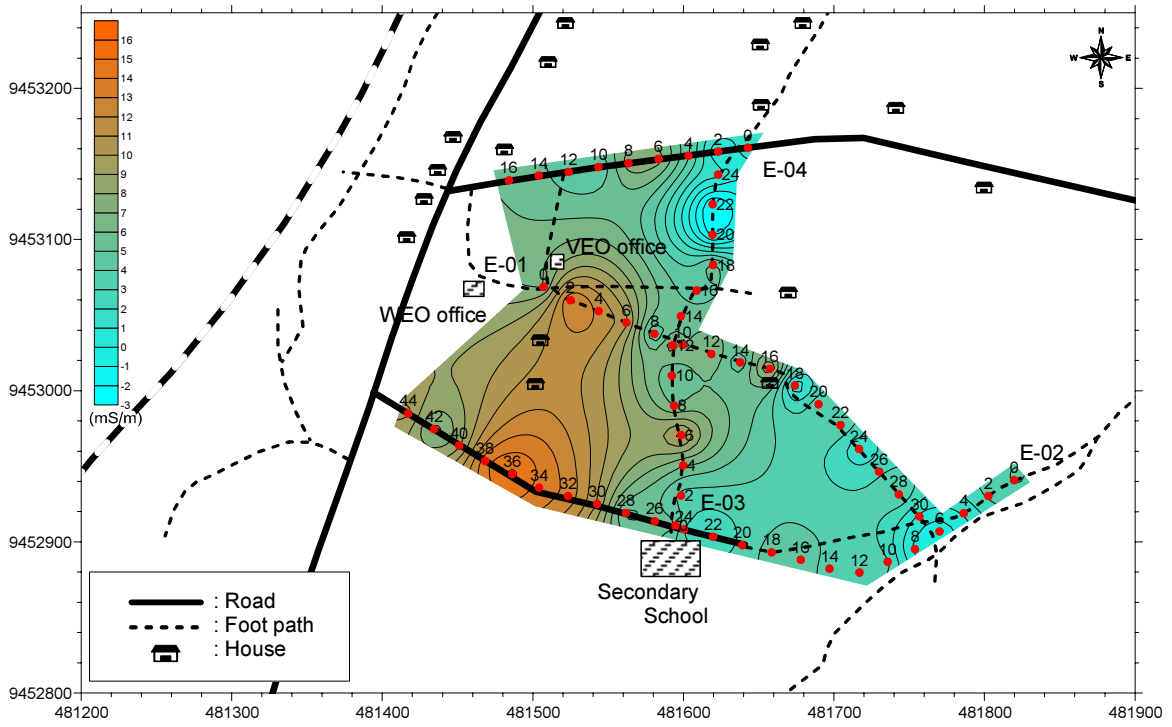


図.2.4.33 探査結果 (タボラ市ウユイ村 Mandelo sub-village)

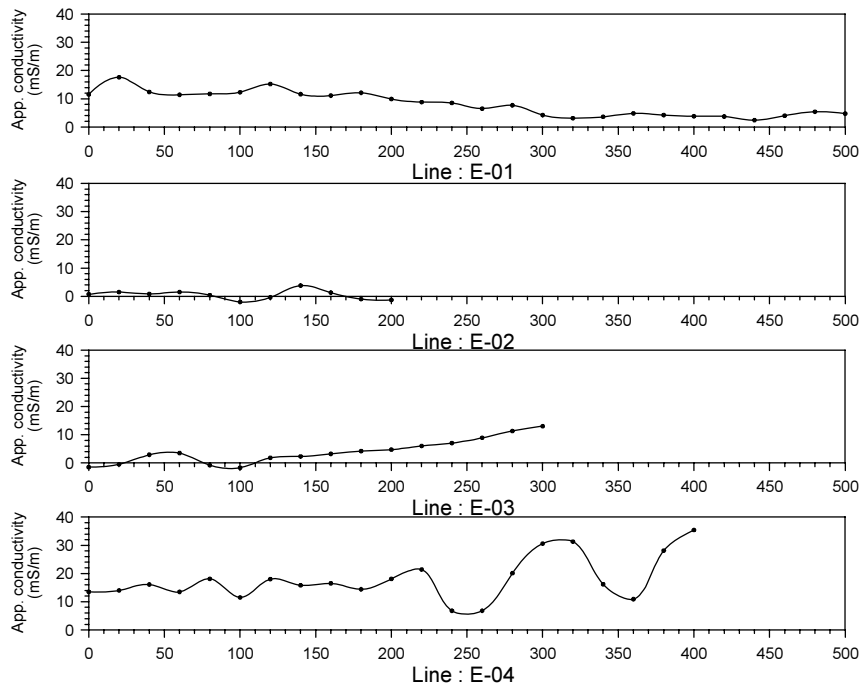
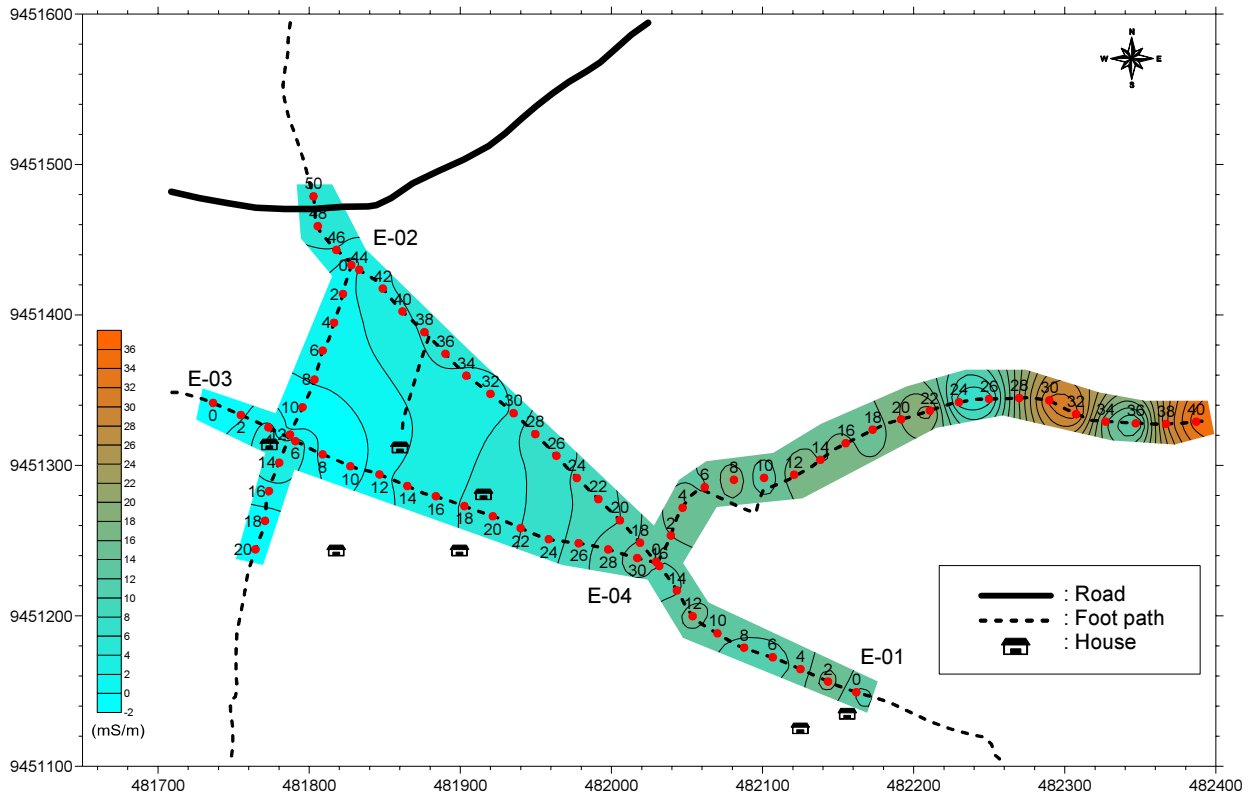


図.2.4.34 探査結果 (タボラ市ウユイ村 Milambela sub-village)



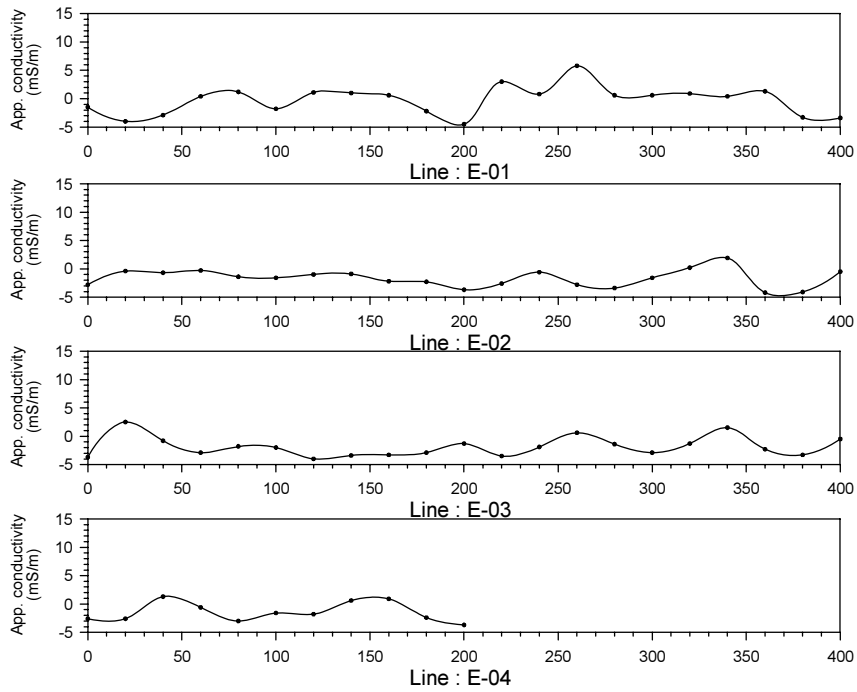
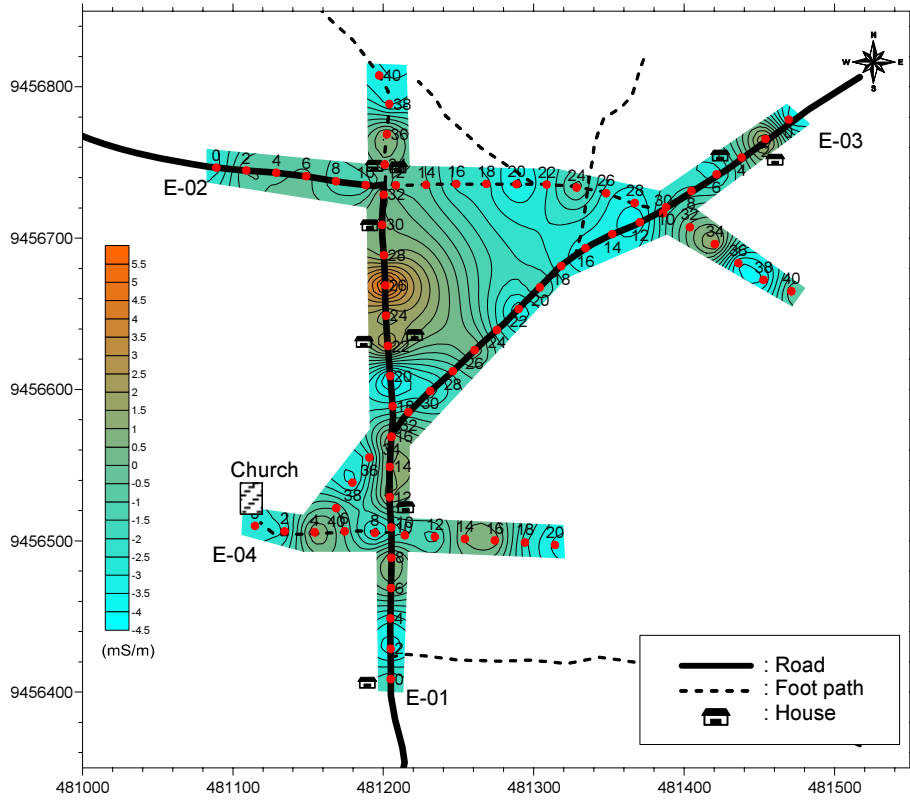


図.2.4.35 探査結果 (タボラ市ウユイ村 Mtukula sub-village)

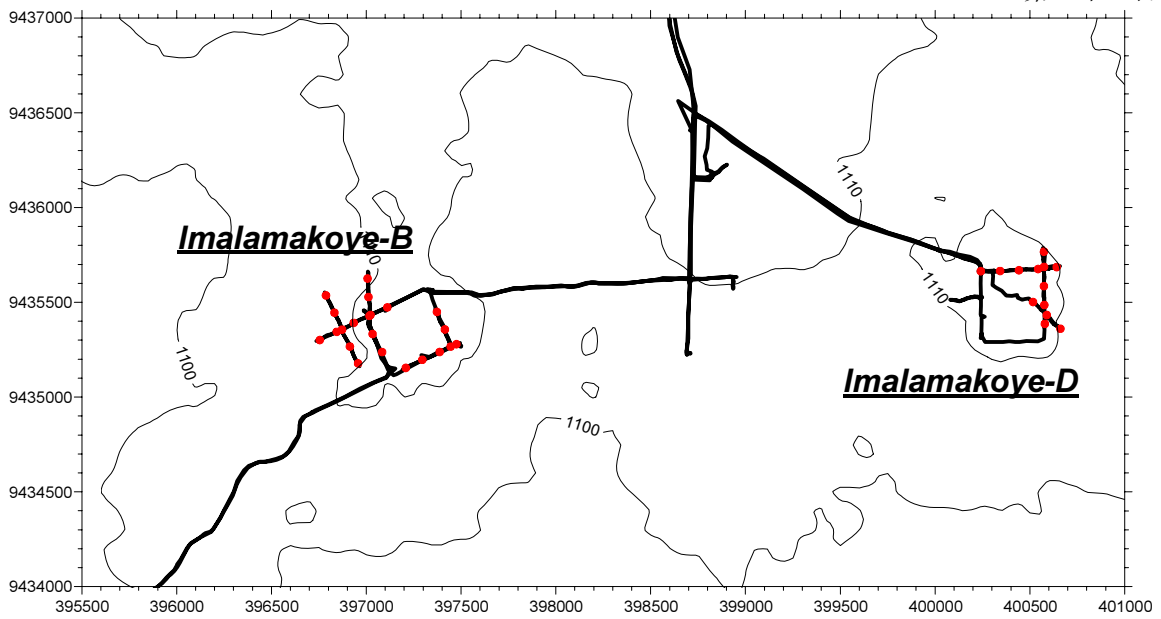


図.2.4.36 探査実施地点 (ウランボ県イマラマコエ村)

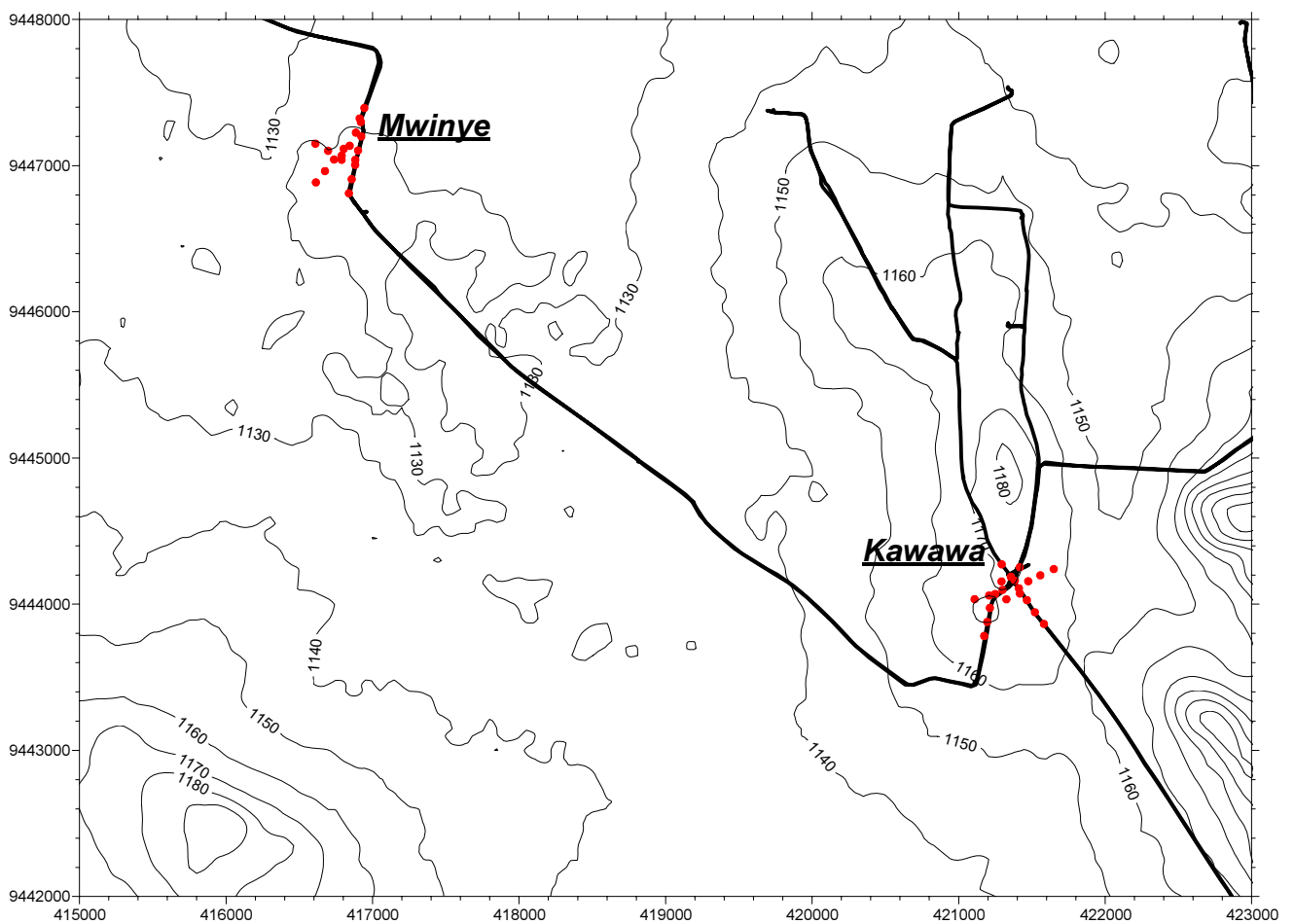


図.2.4.37 探査実施地点 (ウランボ県カレンベラ村)

第2章 物理探査

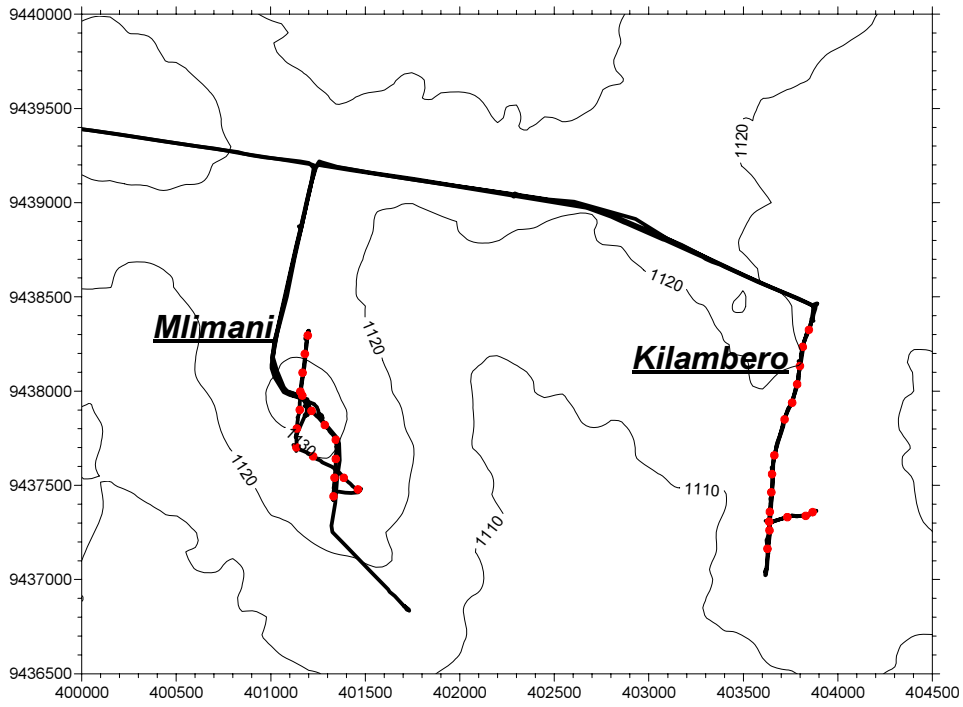


図.2.4.38 探査実施地点 (ウランボ県カピルラ村)

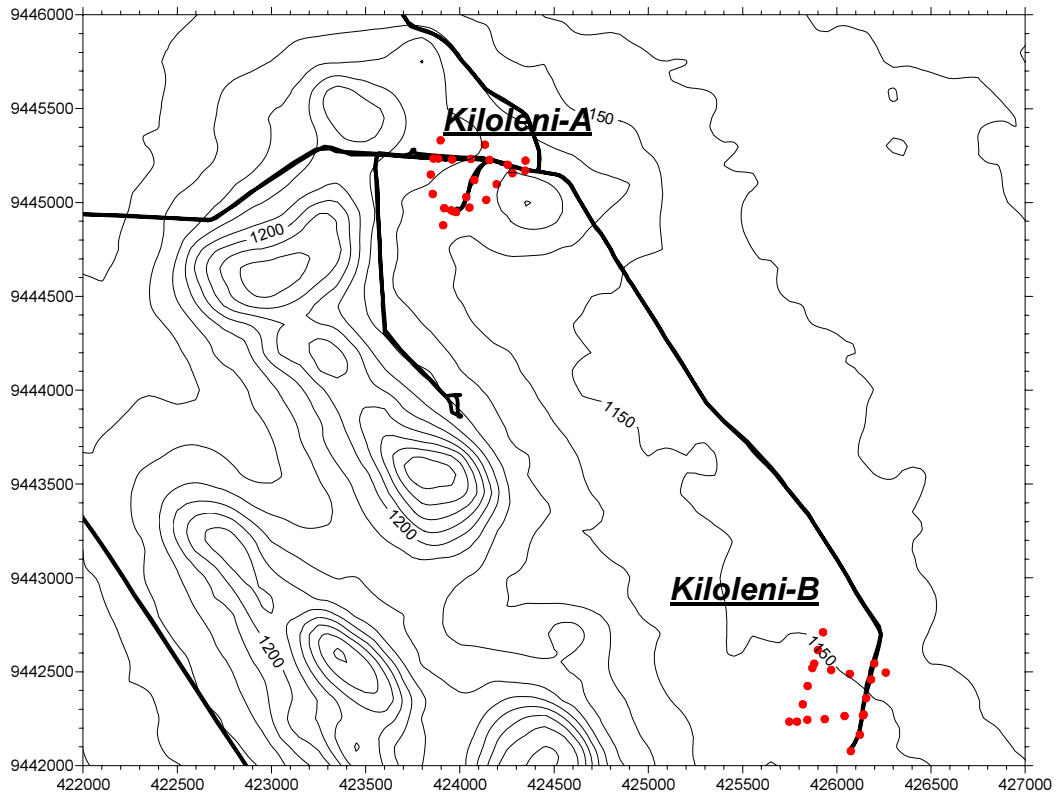


図.2.4.39 探査実施地点 (ウランボ県キロレニ村)

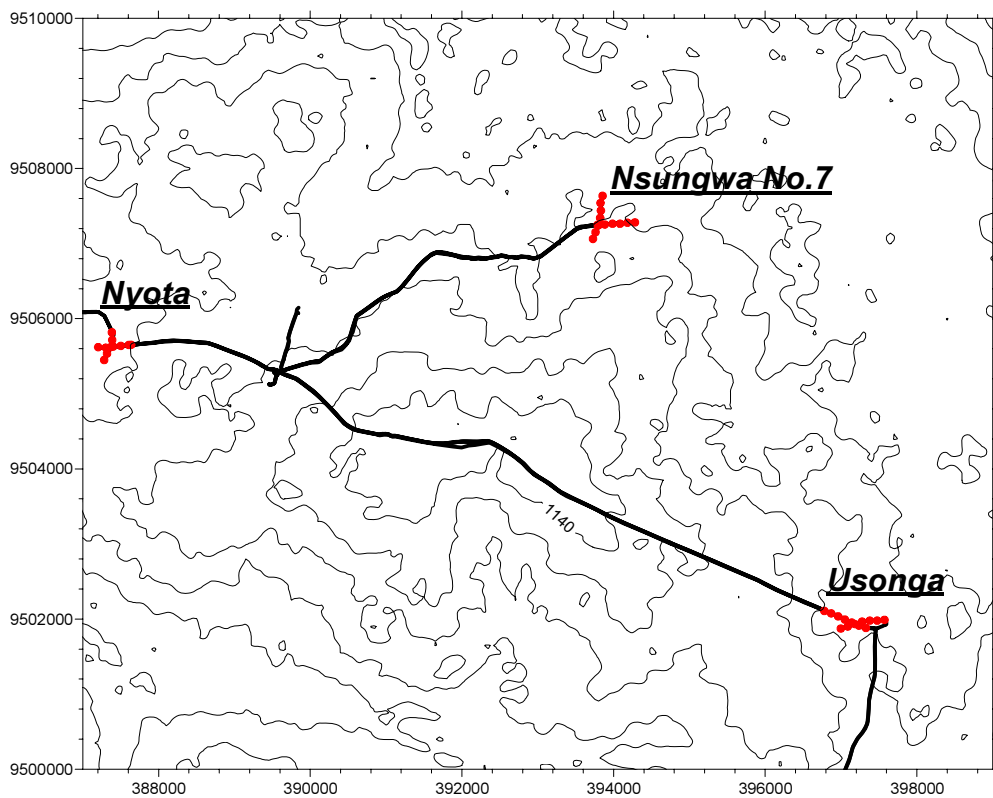


図.2.4.40 探査実施地点 (ウランゴ県ンシングワ村)

第2章 物理探査

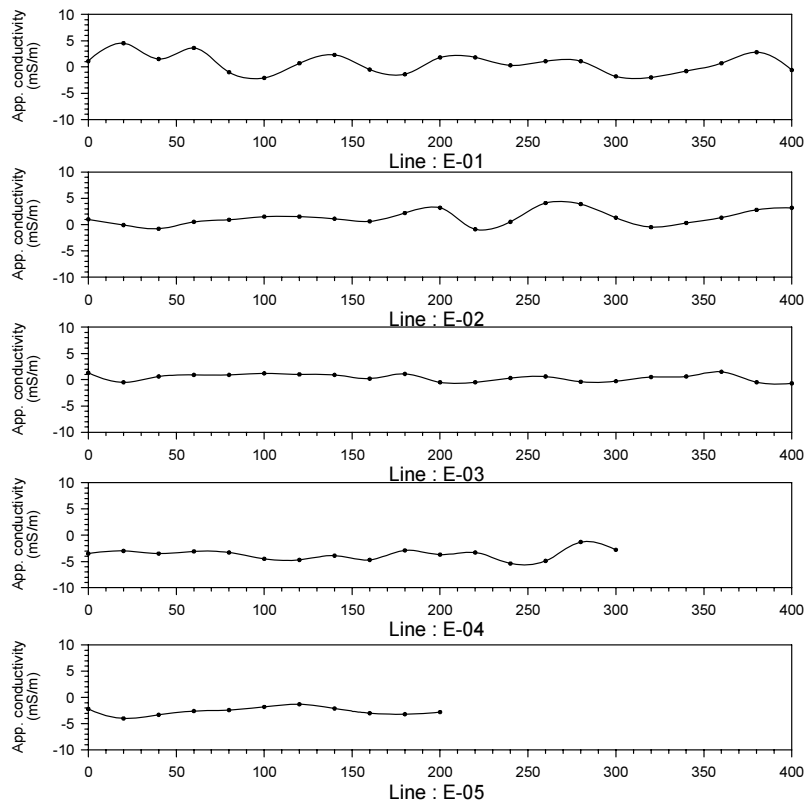
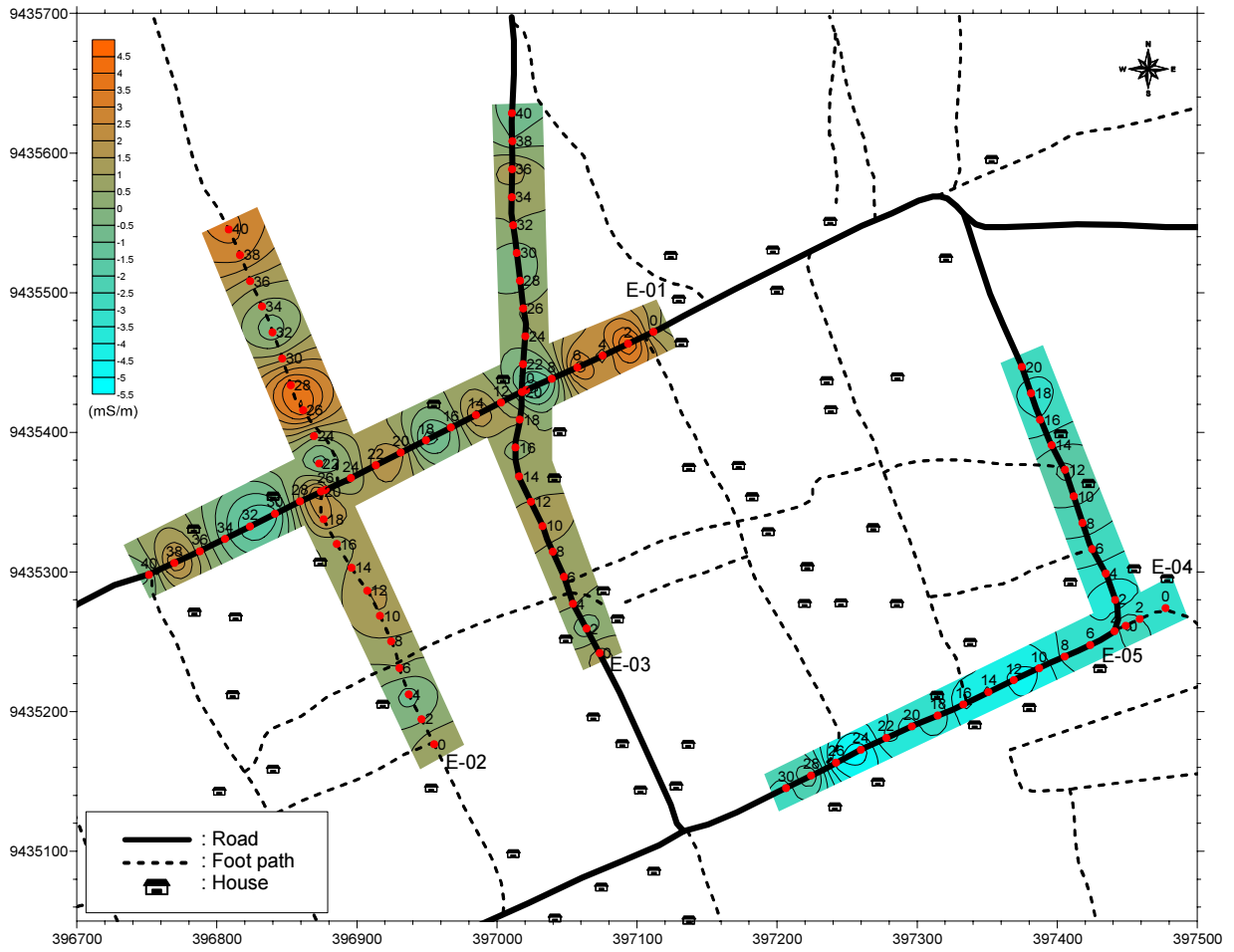


図.2.4.41 探査結果（ウランボ県イマラマコエ村 Imalamakoye-B sub-village）

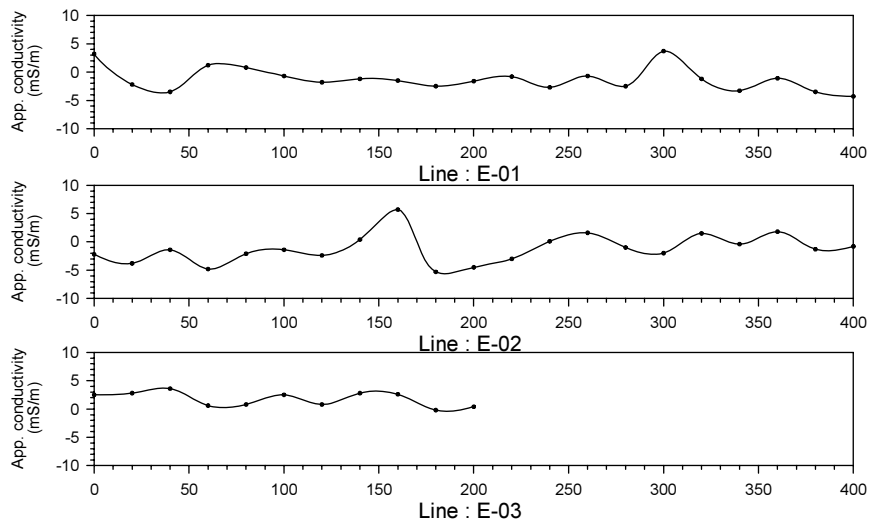
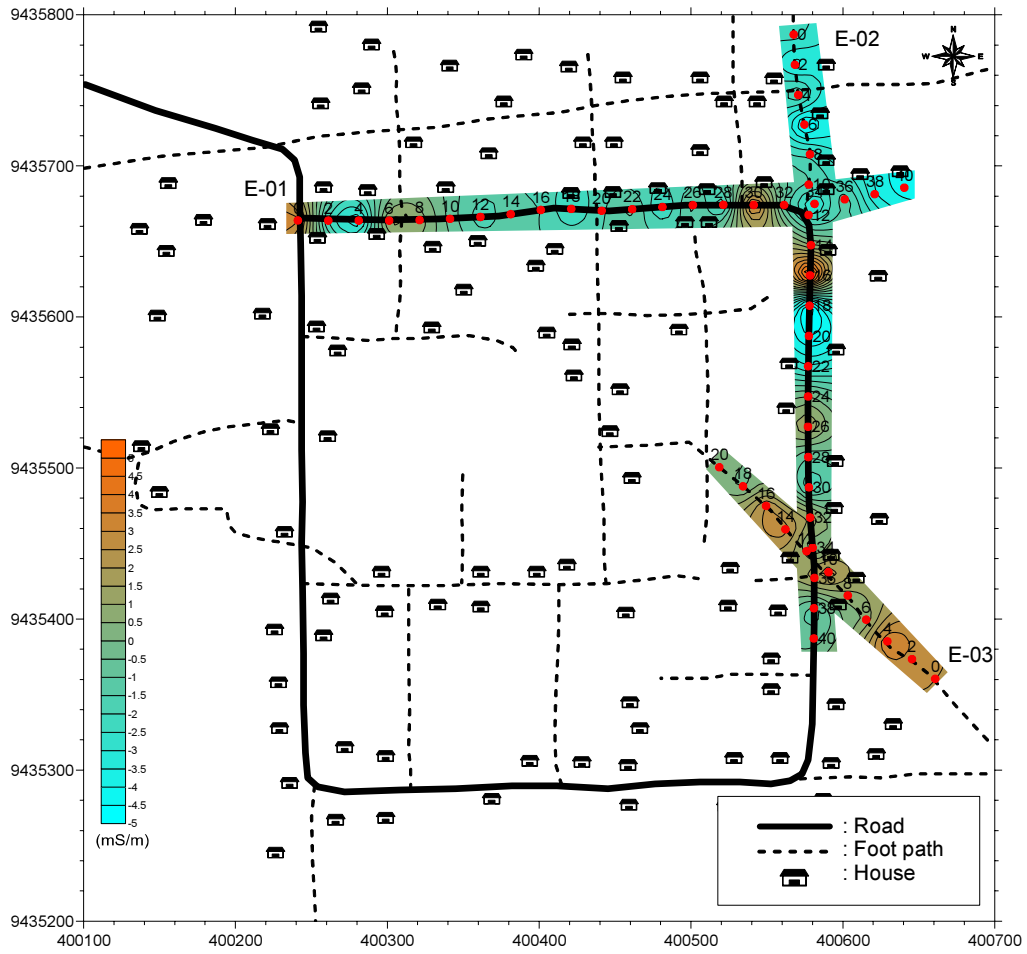


図.2.4.42 探査結果 (ウランゴ県イマラマコエ村 Imalamakoye-D sub-village )

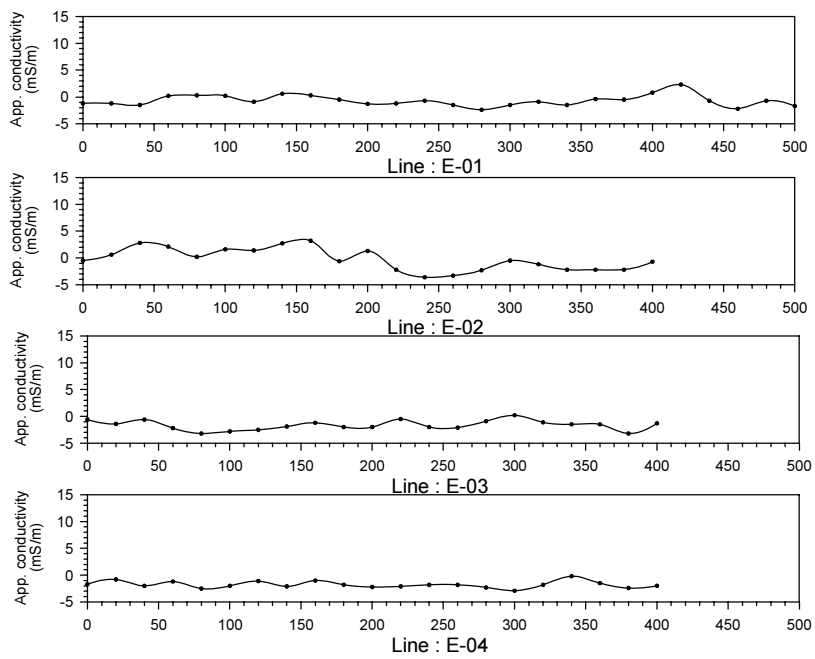
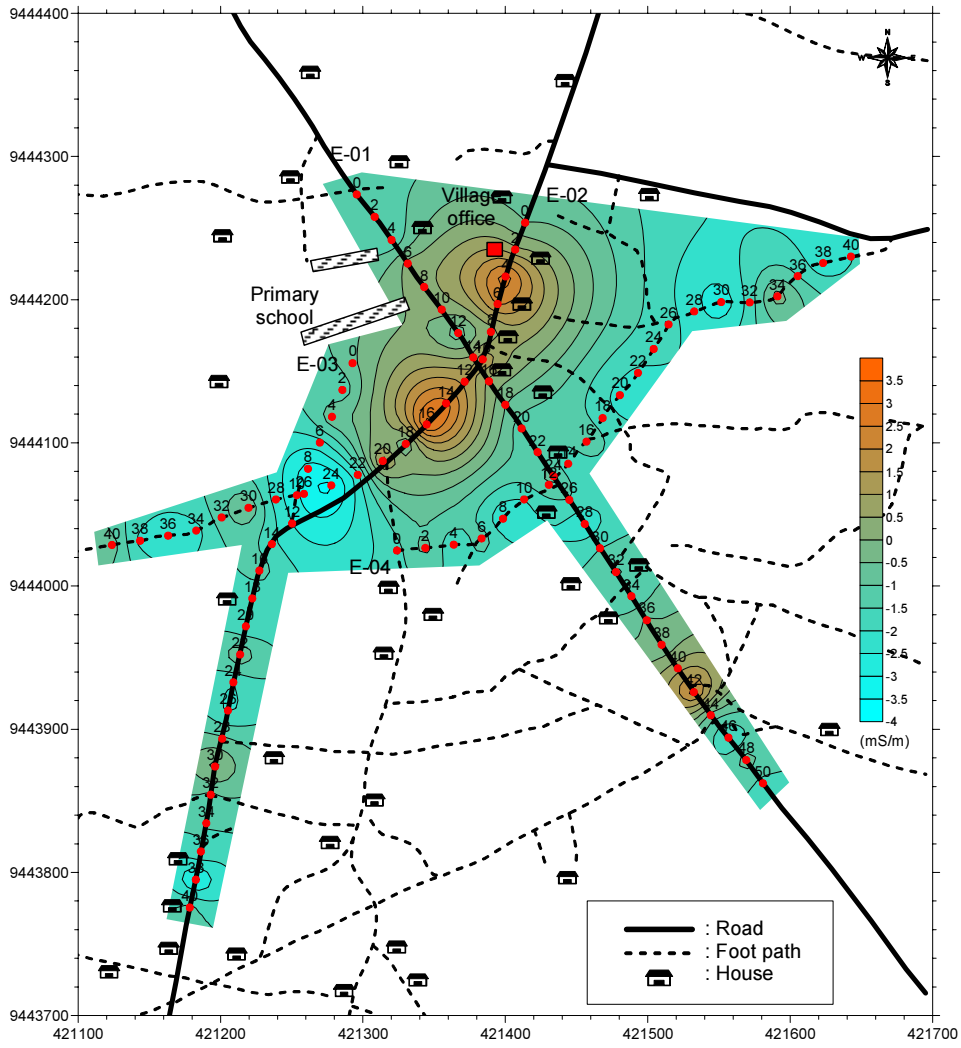


図.2.4.43 探査結果 (ウランゴ県イマラマコエ村 Kawawa sub-village )

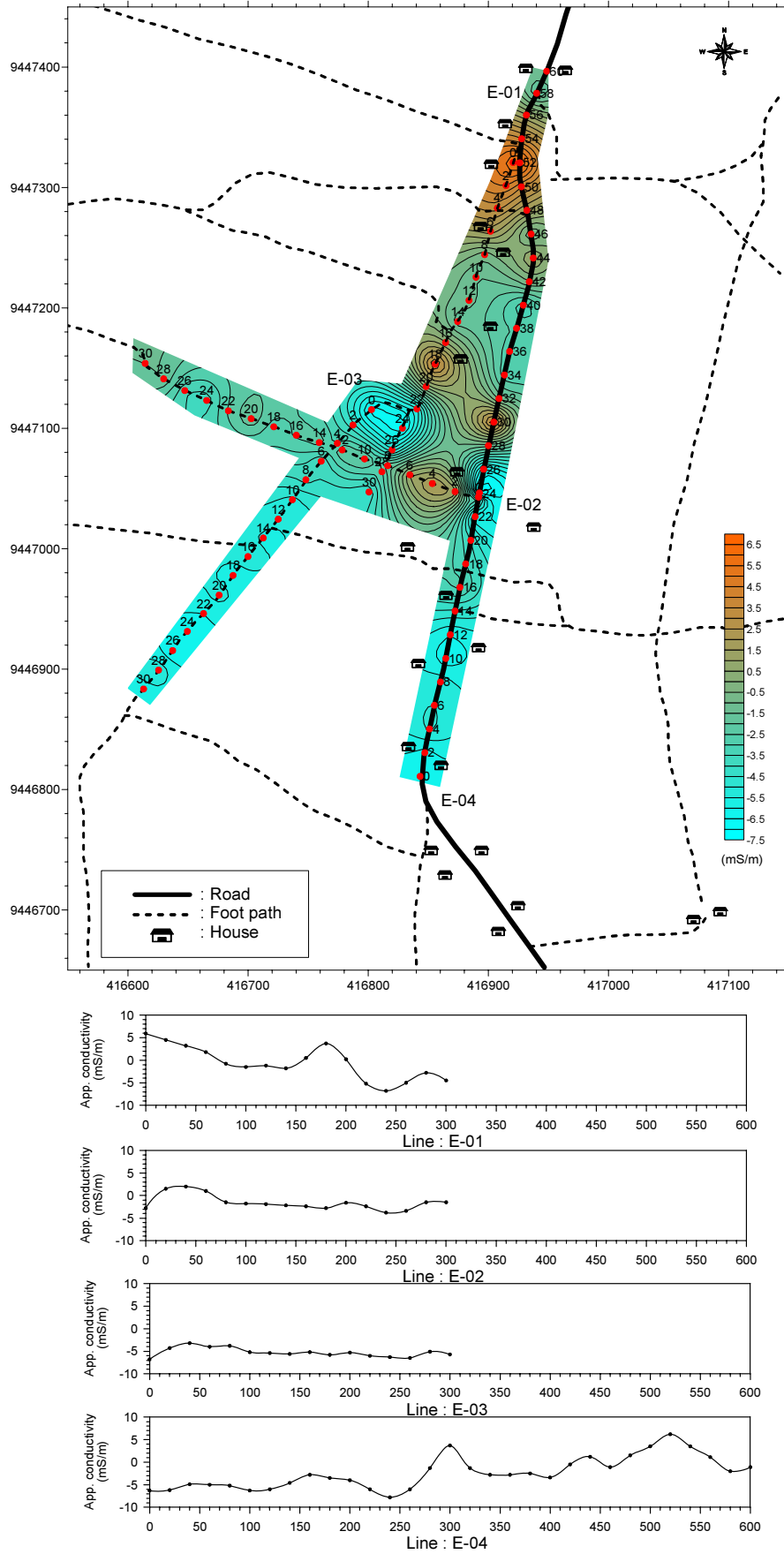


図.2.4.44 探査結果 (ウランゴ県カレンベラ村 Mwinye sub-village )



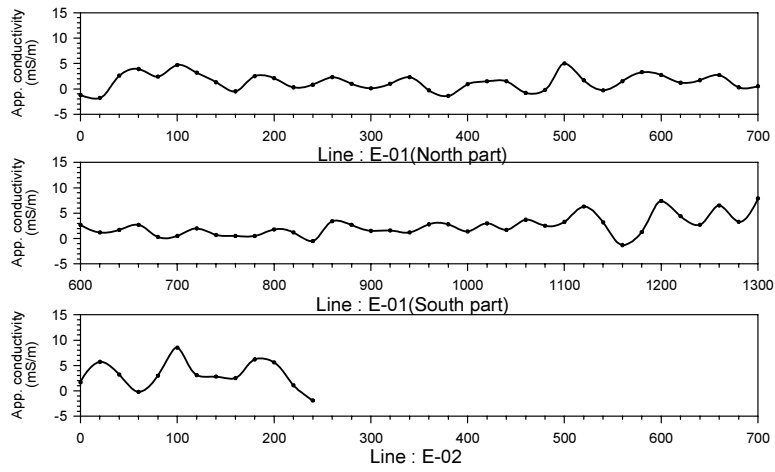
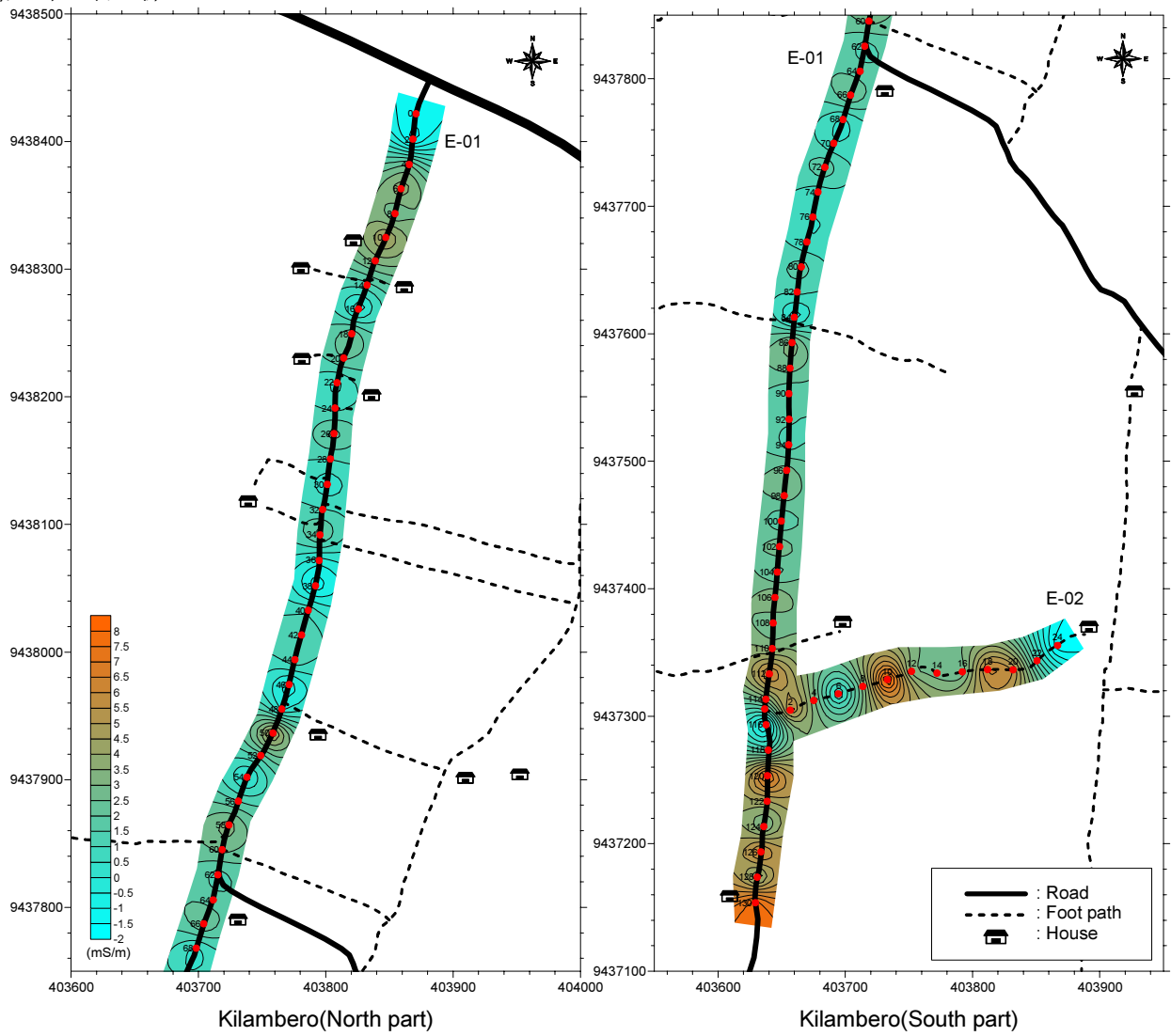


図.2.4.45 探査結果 (ウランゴ県カピラ村 Kilambero sub-village )

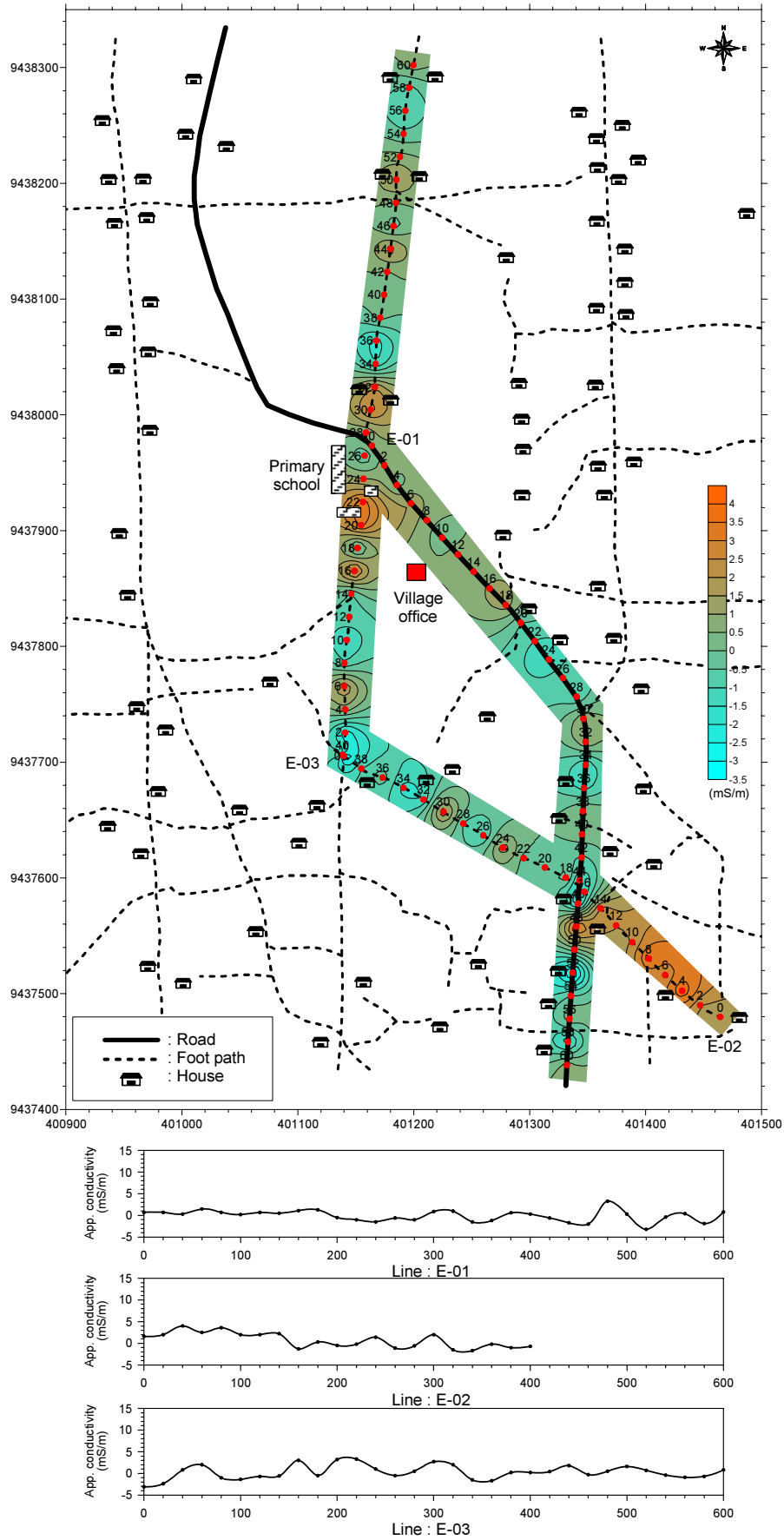


図.2.4.46 探査結果 (ウランボ県カピルラ村 Mlimani sub-village )

第2章 物理探査

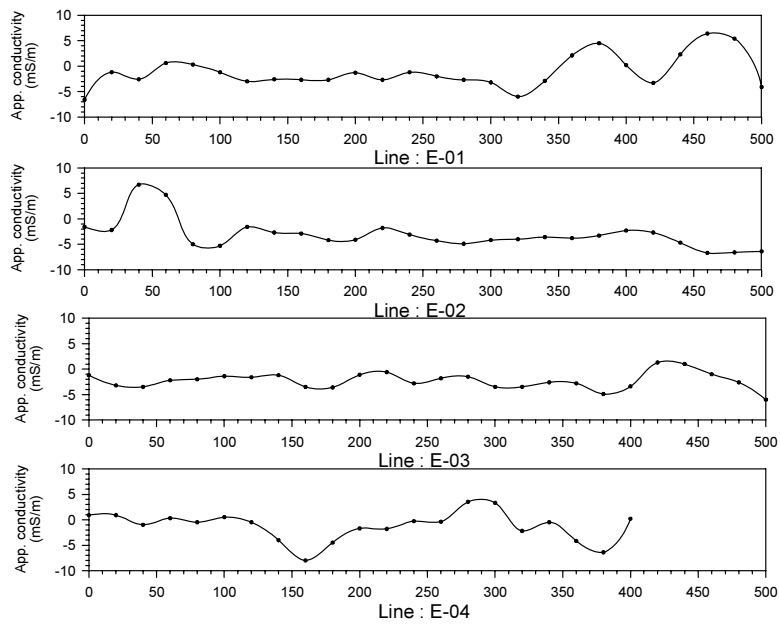
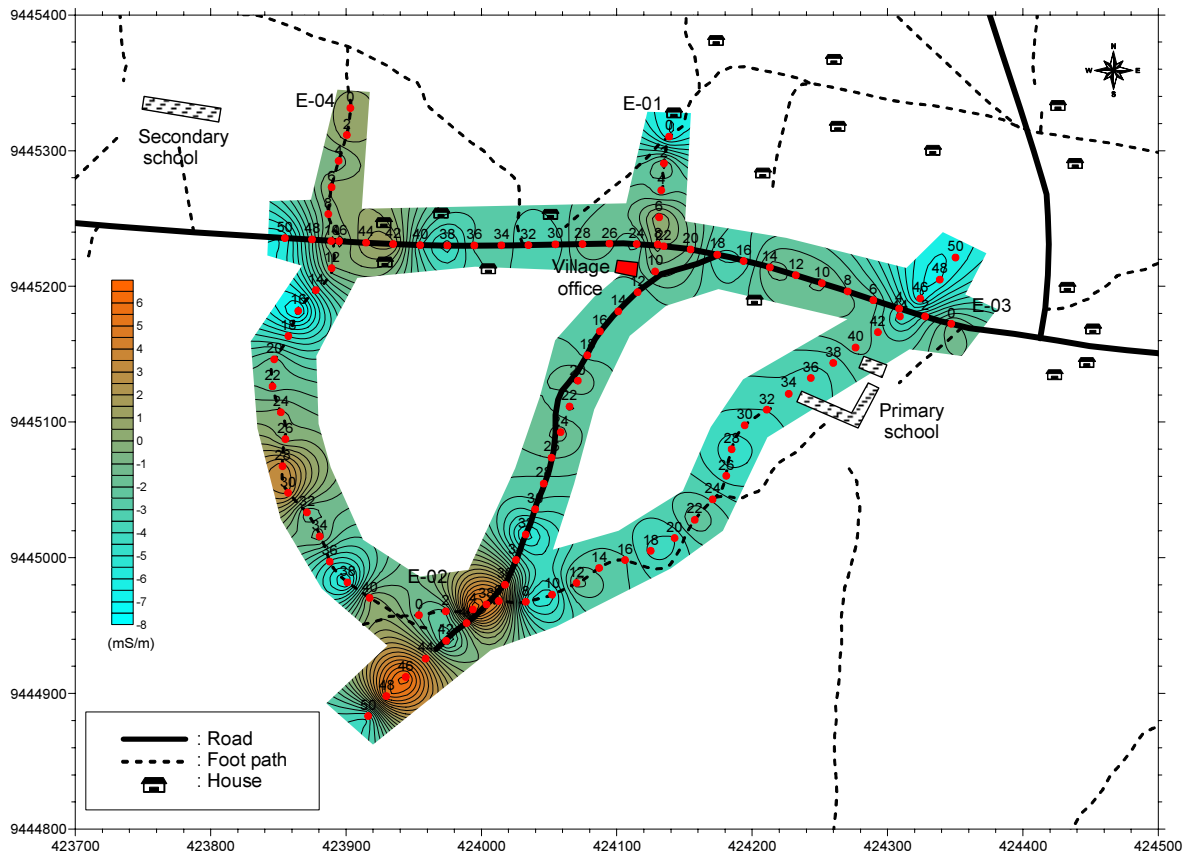


図.2.4.47 探査結果 (ウランゴ県キロレニ村 Kiloleni-A sub-village )

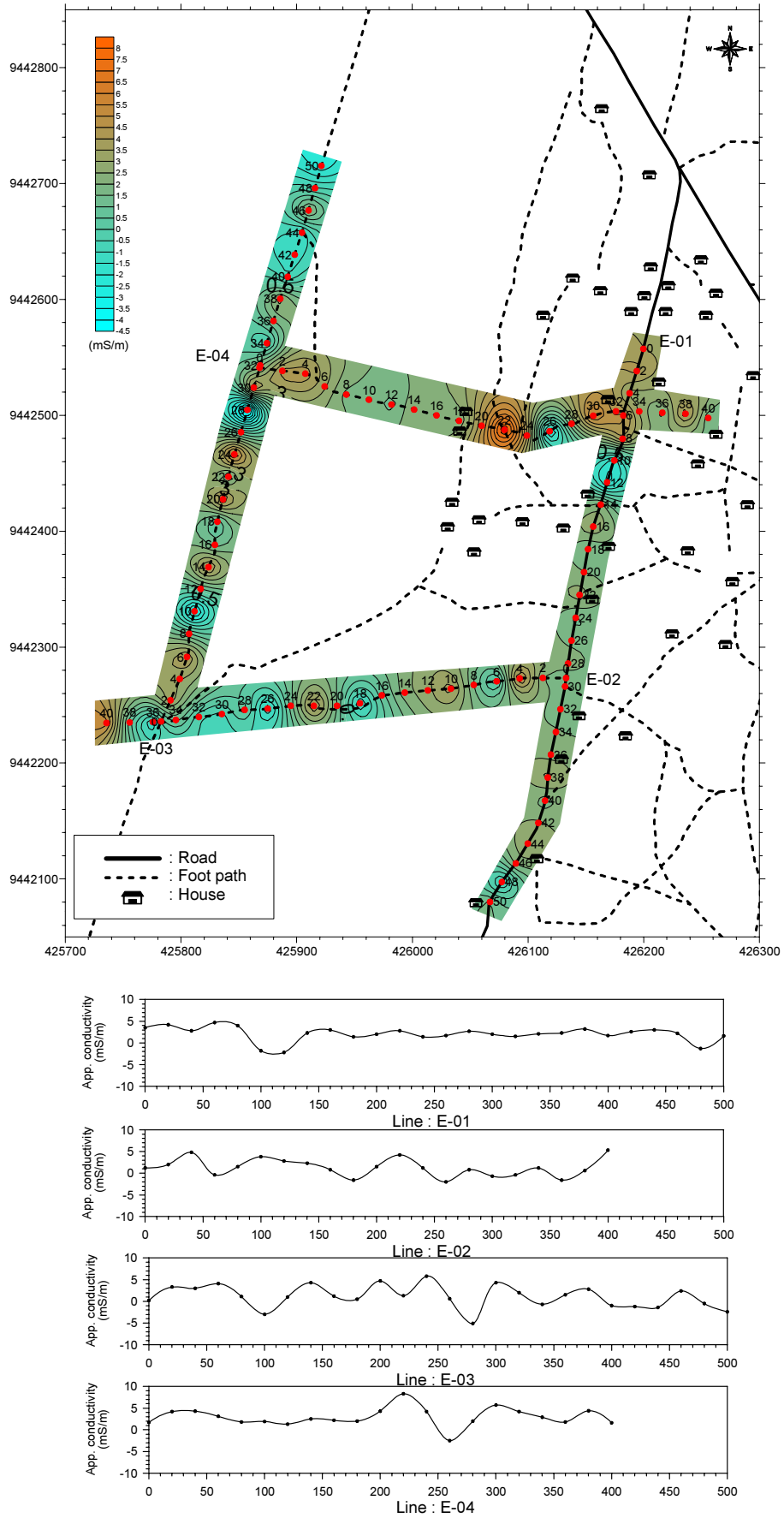


図.2.4.48 探査結果 (ウランゴ県キロレニ村 Kiloleni-B sub-village )

第2章 物理探査

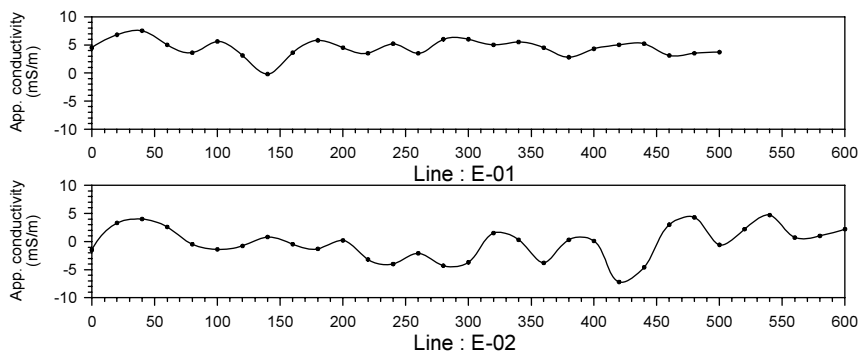
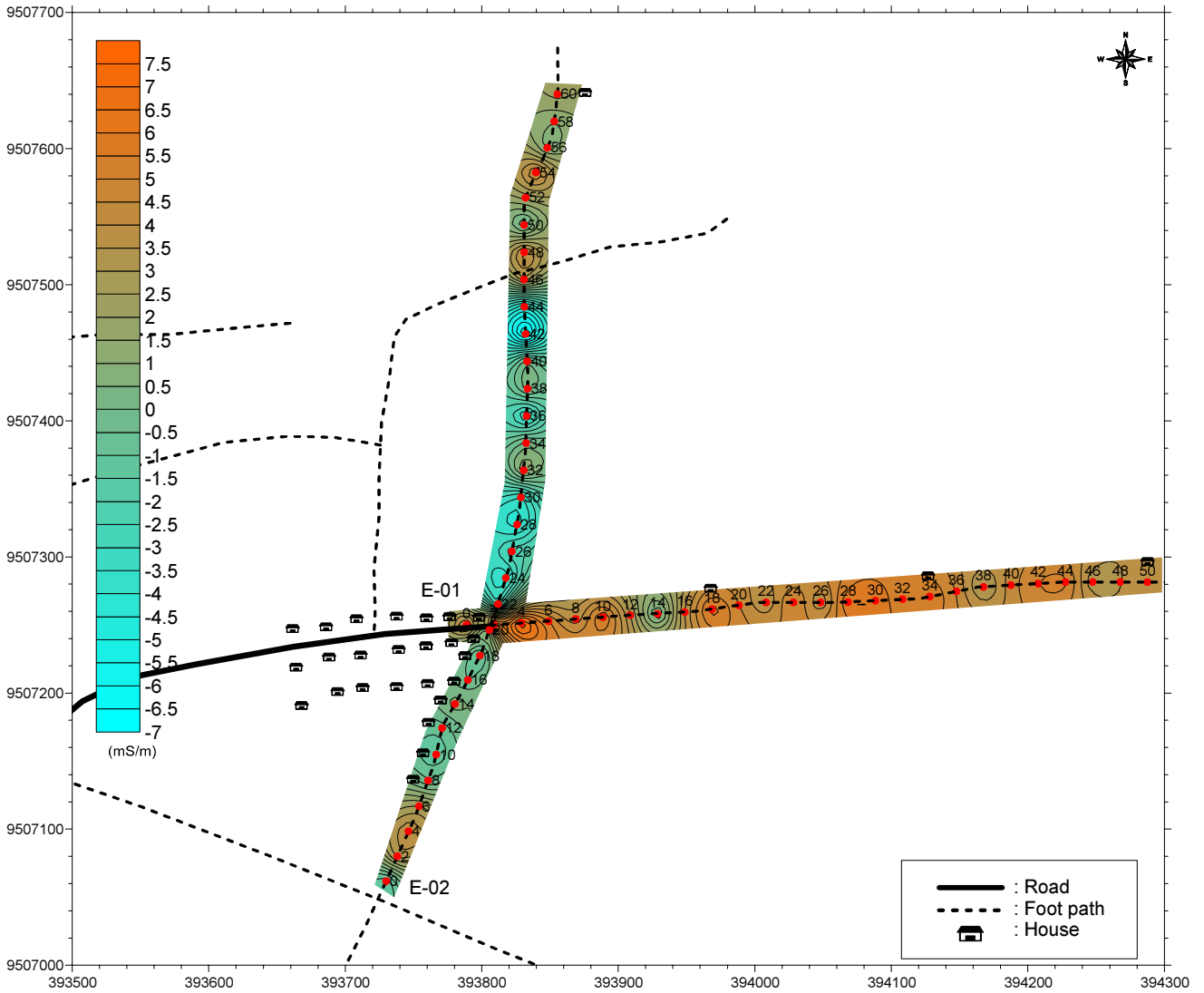


図.2.4.49 探査結果 (ウランボ県シスングワ村 Nsungwa No.7 sub-village )

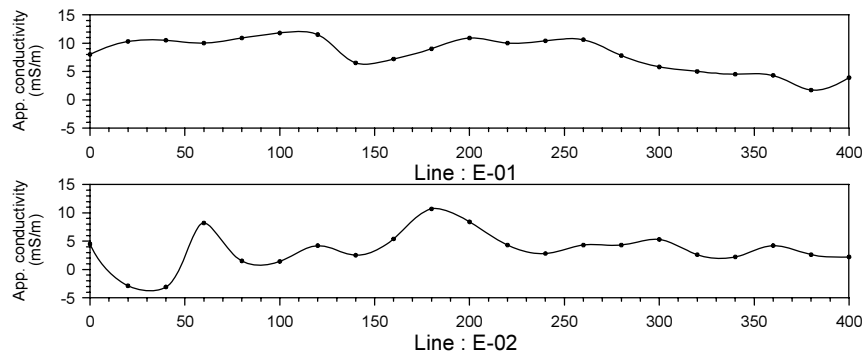
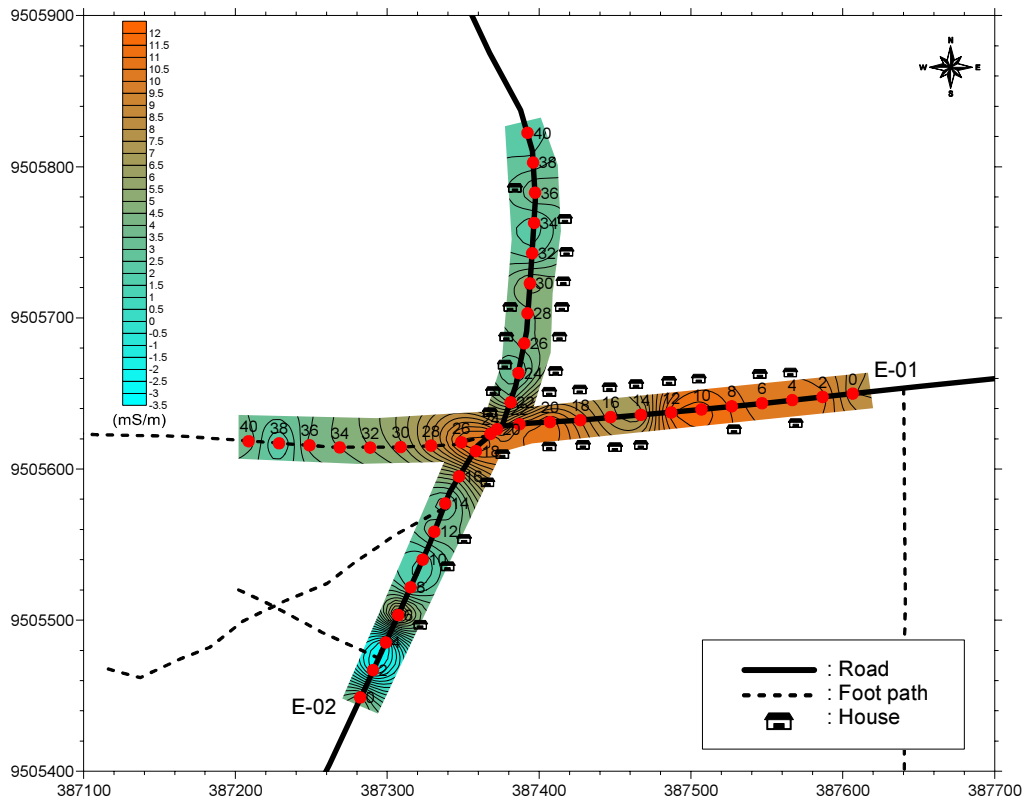


図.2.4.50 探査結果 (ウランゴ県ンスングワ村 Nyota sub-village )

第2章 物理探査

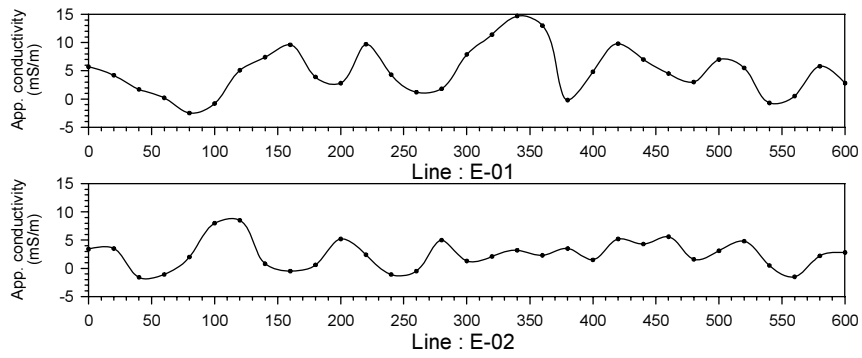
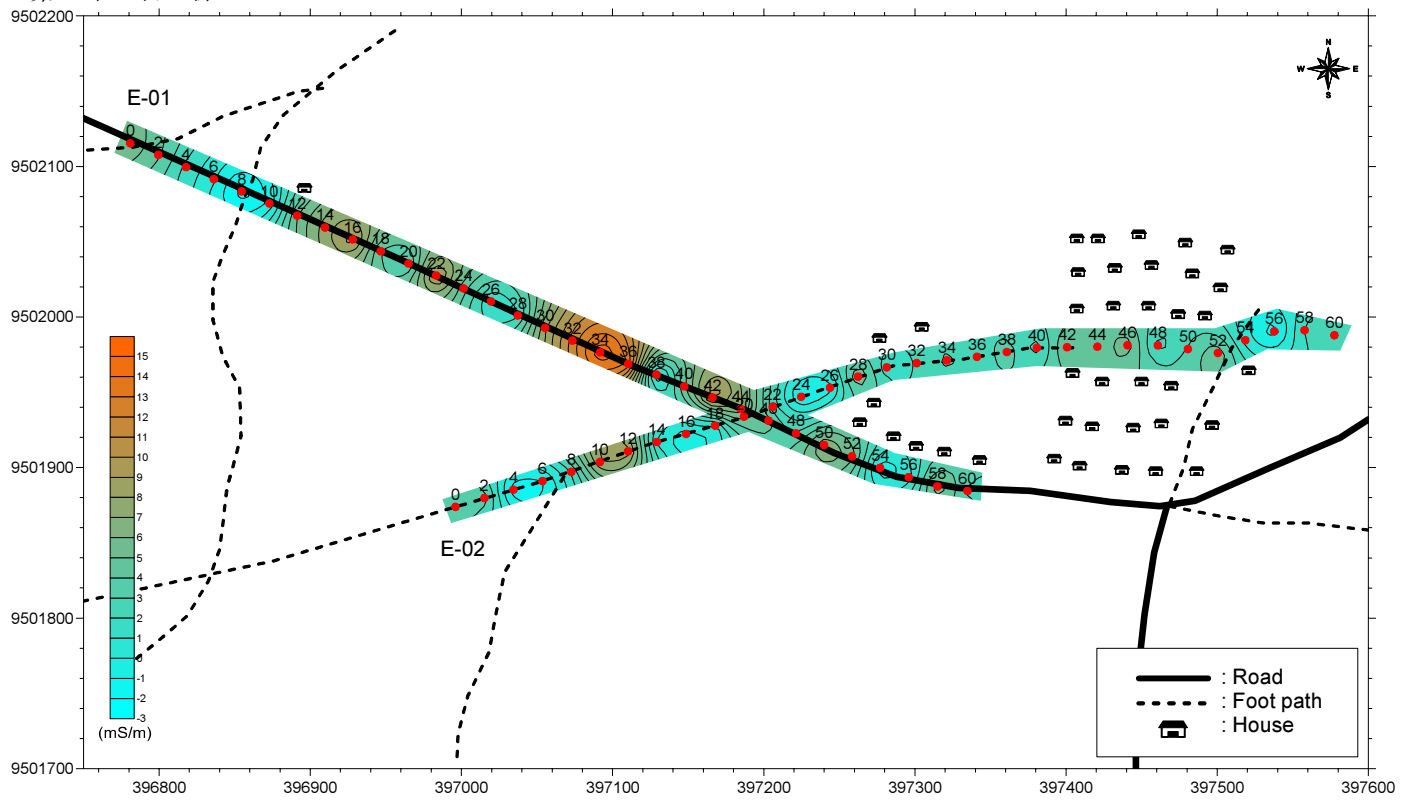


図.2.4.51 探査結果 (ウランゴ県シスングワ村 Usonga sub-village )