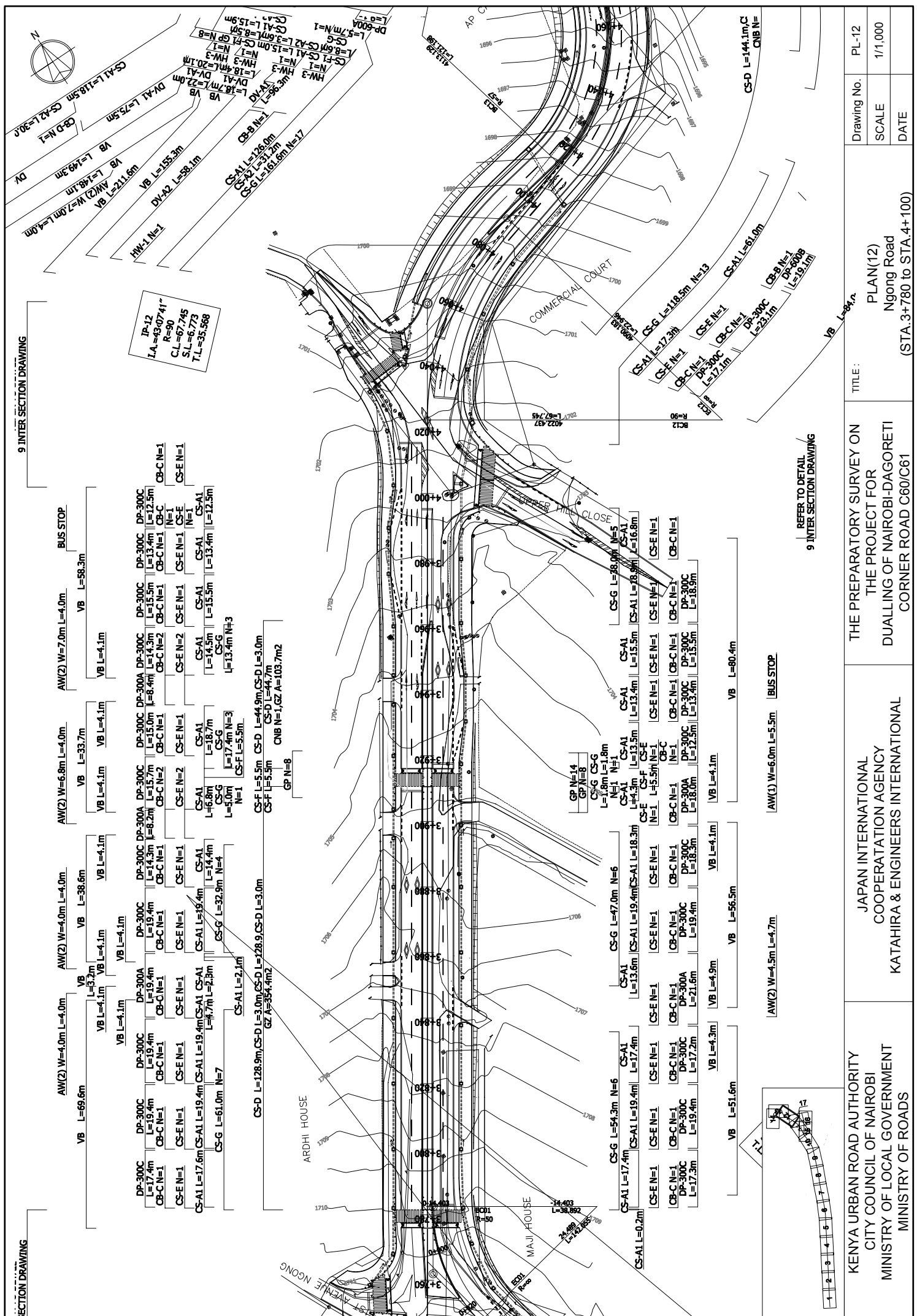


KENYA URBAN ROAD AUTHORITY CITY COUNCIL OF NAIROBI MINISTRY OF LOCAL GOVERNMENT MINISTRY OF ROADS	JAPAN INTERNATIONAL COOPERATION AGENCY KATAHIRA & ENGINEERS INTERNATIONAL	THE PREPARATORY SURVEY ON THE PROJECT FOR DUALLING OF NAIROBI-DAGORETTI CORNER ROAD C60/C61	PLAN(11) Ngong Road (STA.3+420 to STA.3+780)	Drawing No. PL-11
				SCALE 1/1,000
			DATE	



SECTION DRAWING

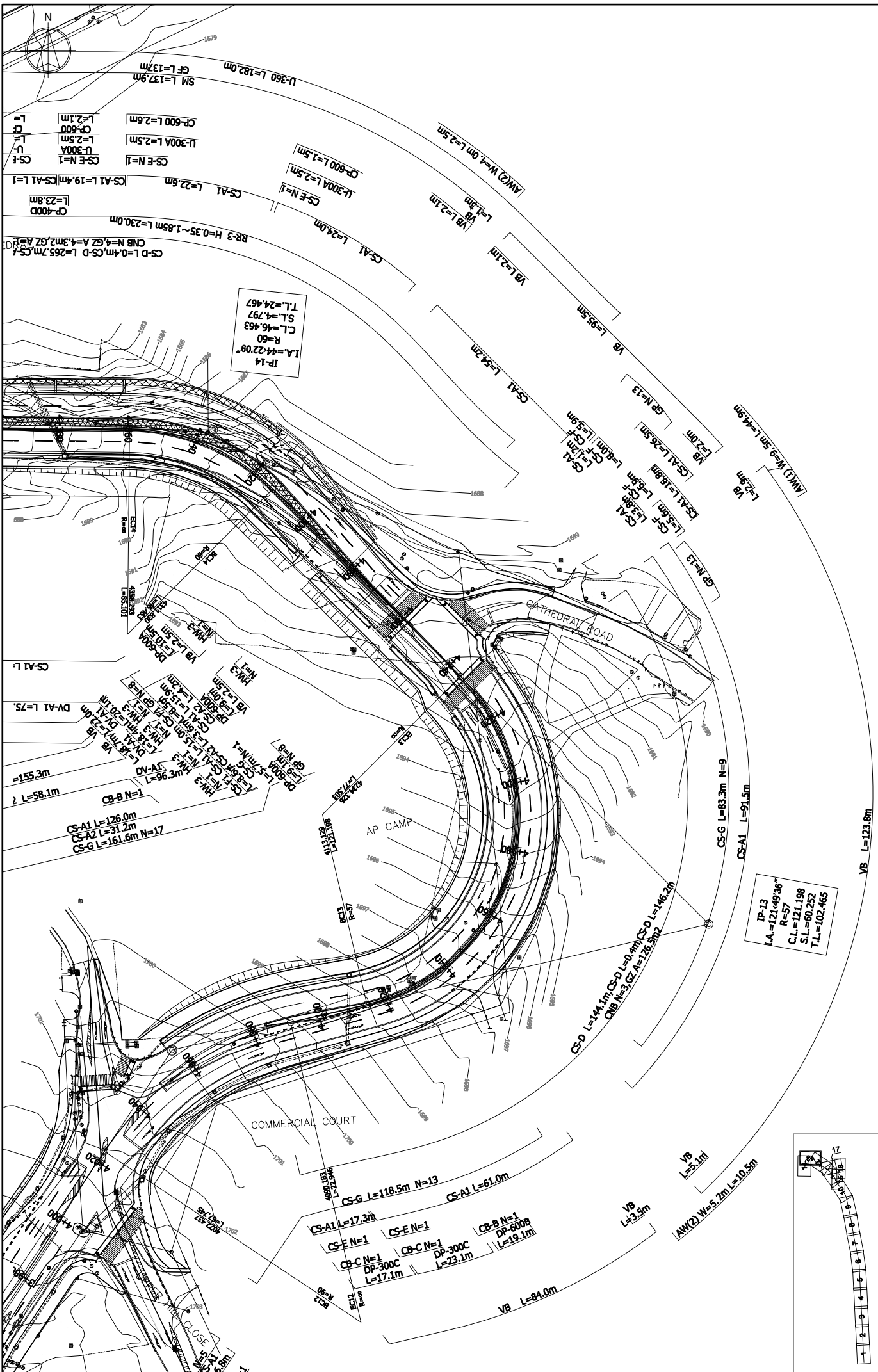
9 INTER SECTION DRAWING

I.P-12  
 L.A.=43.0741°  
 R=90  
 C.L.=67.745  
 S.L.=6.773  
 T.L.=35.568

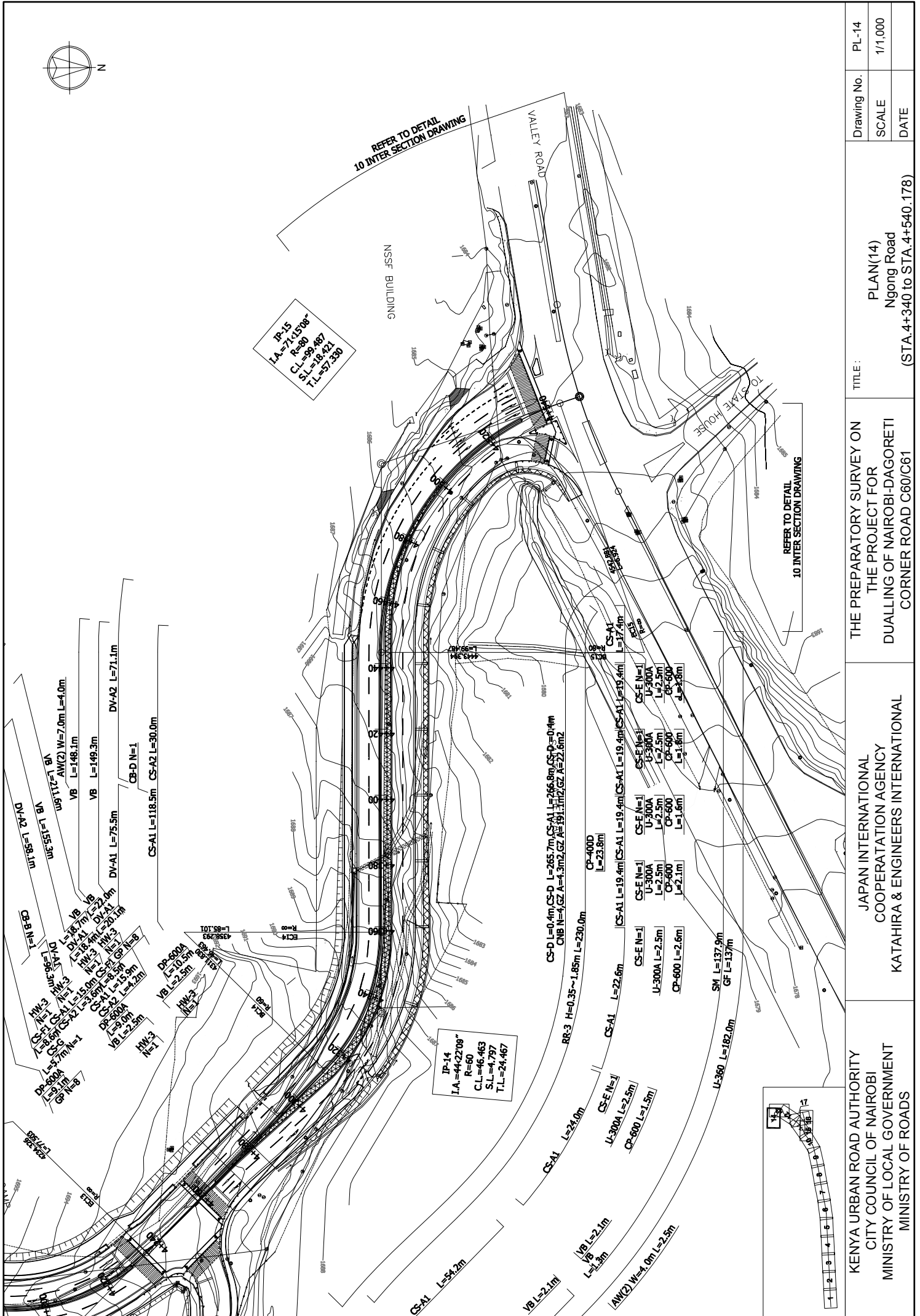
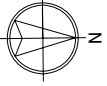
REFER TO DETAIL  
9 INTER SECTION DRAWING



Drawing No.	PL-12
SCALE	1/1,000
DATE	
TITLE :	THE PREPARATORY SURVEY ON THE PROJECT FOR DUALLING OF NAIROBI-DAGORETTI CORNER ROAD C60/C61
KATHAIRA & ENGINEERS INTERNATIONAL	JAPAN INTERNATIONAL COOPERATION AGENCY KATHAIRA & ENGINEERS INTERNATIONAL
KENYA URBAN ROAD AUTHORITY CITY COUNCIL OF NAIROBI MINISTRY OF LOCAL GOVERNMENT MINISTRY OF ROADS	PLAN(12) Ngong Road (STA.3+780 to STA.4+100)



Drawing No.	PL-13
	SCALE
DATE	1/1,000
TITLE:	
THE PREPARATORY SURVEY ON THE PROJECT FOR DUALLING OF NAIROBI-DAGORETTI CORNER ROAD C60/C61 (STA. 4+100 to STA. 4+340)	
JAPAN INTERNATIONAL COOPERATION AGENCY KATAHIRA & ENGINEERS INTERNATIONAL	
KENYA URBAN ROAD AUTHORITY CITY COUNCIL OF NAIROBI MINISTRY OF LOCAL GOVERNMENT MINISTRY OF ROADS	



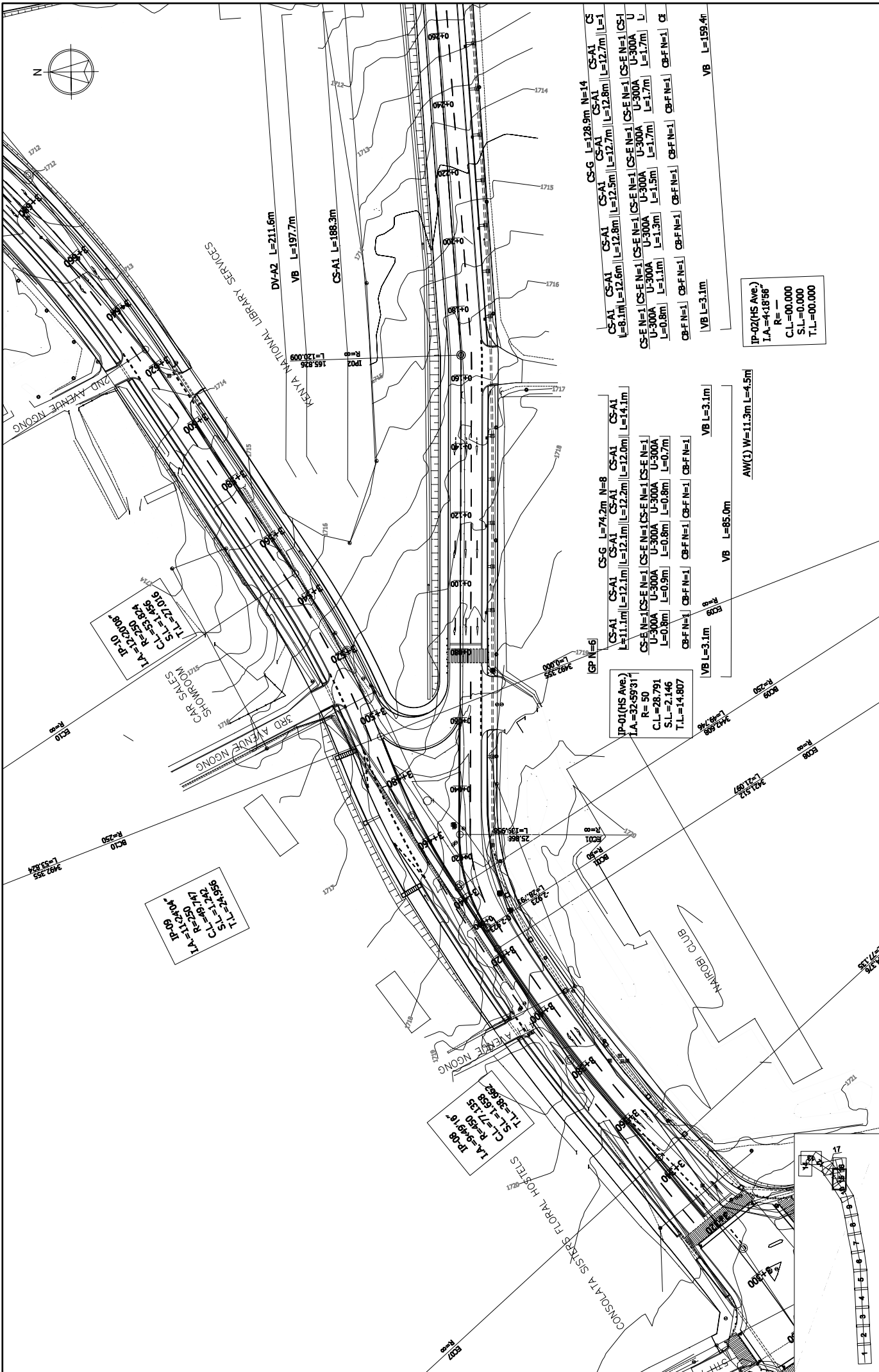
Drawing No.	PL-14
SCALE	1/1,000
DATE	

TITLE :  
 PLAN(14)  
 Ngong Road  
 (STA.4+340 to STA.4+540.178)

THE PREPARATORY SURVEY ON  
 THE PROJECT FOR  
 DUALLING OF NAIROBI-DAGORETTI  
 CORNER ROAD C60/C61

JAPAN INTERNATIONAL  
 COOPERATION AGENCY  
 KATAHIRA & ENGINEERS INTERNATIONAL

KENYA URBAN ROAD AUTHORITY  
 CITY COUNCIL OF NAIROBI  
 MINISTRY OF LOCAL GOVERNMENT  
 MINISTRY OF ROADS



IP-10  
 LA=12.208  
 CL=53.824  
 TL=27.406

IP-9  
 LA=11.204  
 CL=49.747  
 TL=24.396

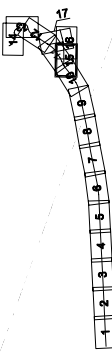
IP-8  
 LA=9.918  
 CL=47.53  
 TL=21.638

IP-01(HS Ave.)  
 LA=32.5931  
 R=50  
 CL=28.791  
 S.L.=2.146  
 T.L.=14.807

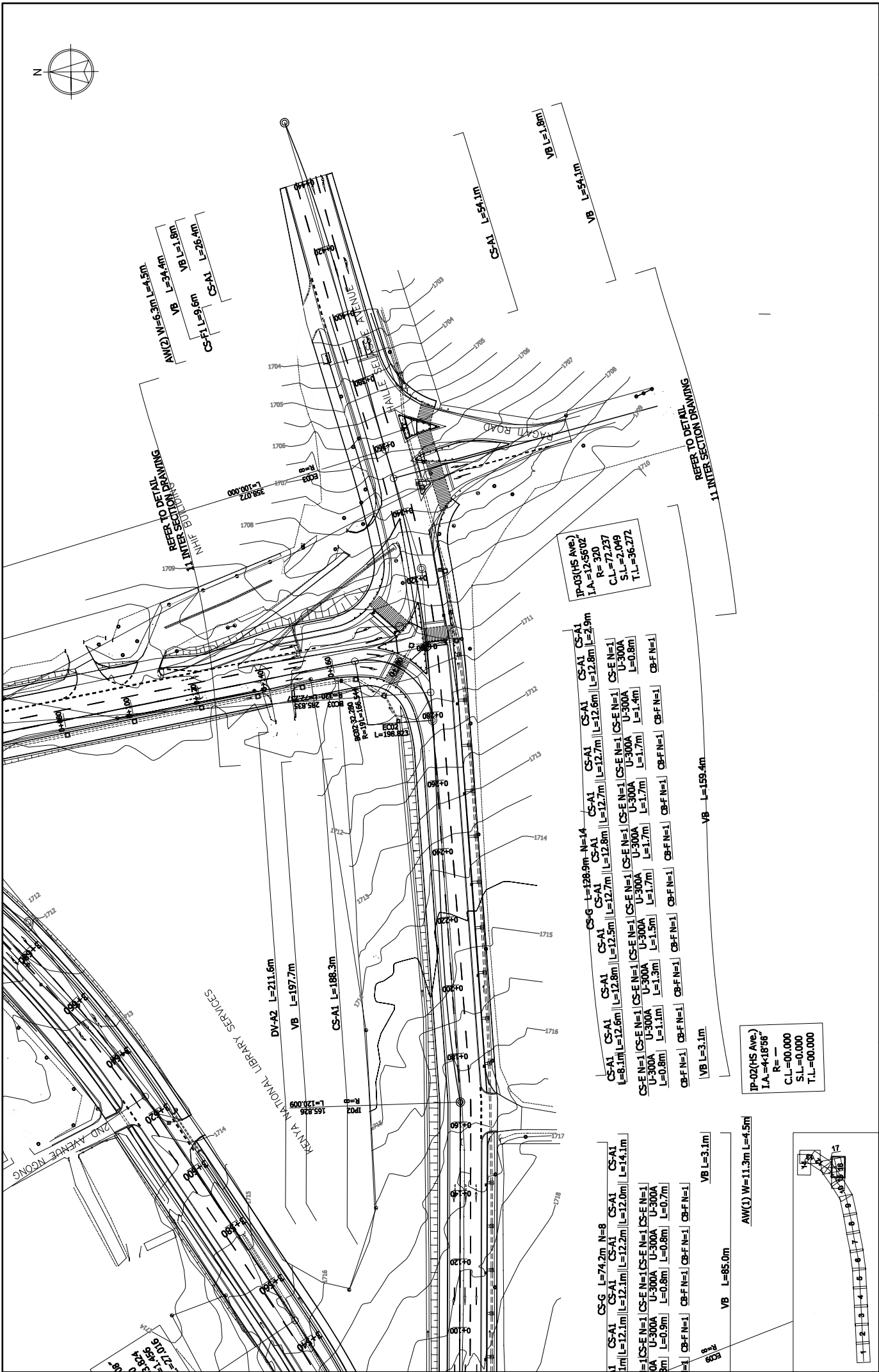
CS-G L=74.2m N=8  
 CS-A1 CS-A1 CS-A1 CS-A1  
 L=11.1m L=12.1m L=12.1m L=12.2m L=12.0m L=14.1m  
 CS-E N=1 CS-E N=1 CS-E N=1 CS-E N=1 CS-E N=1  
 U-300A U-300A U-300A U-300A U-300A  
 L=0.8m L=0.9m L=0.8m L=0.8m L=0.7m  
 CB-F N=1 CB-F N=1 CB-F N=1 CB-F N=1 CB-F N=1  
 VB L=3.1m VB L=85.0m VB L=3.1m  
 AW(C) W=11.3m L=4.5m

CS-G L=128.9m N=14  
 CS-A1 CS-A1 CS-A1 CS-A1 CS-A1 CS-A1  
 L=8.1m L=12.6m L=12.8m L=12.5m L=12.7m L=12.7m L=12.7m L=1  
 CS-E N=1 CS-E N=1 CS-E N=1 CS-E N=1 CS-E N=1 CS-E N=1 CS-E N=1 CS-E N=1  
 U-300A U-300A U-300A U-300A U-300A U-300A U-300A U-300A  
 L=0.8m L=1.1m L=1.3m L=1.5m L=1.7m L=1.7m L=1.7m L=1.7m  
 CB-F N=1 CB-F N=1 CB-F N=1 CB-F N=1 CB-F N=1 CB-F N=1 CB-F N=1 CB-F N=1  
 VB L=3.1m VB L=159.4m

IP-02(HS Ave.)  
 LA=4.1866  
 R=—  
 CL=00.000  
 S.L.=0.000  
 T.L.=00.000



KENYA URBAN ROAD AUTHORITY CITY COUNCIL OF NAIROBI MINISTRY OF LOCAL GOVERNMENT MINISTRY OF ROADS	JAPAN INTERNATIONAL COOPERATION AGENCY KATAHIRA & ENGINEERS INTERNATIONAL	THE PREPARATORY SURVEY ON THE PROJECT FOR DUALLING OF NAIROBI-DAGORETTI CORNER ROAD C60/C61  TITLE:  PLAN(15) Haile Selassie Avenue (STA.0-2.923 to STA.0+240)	Drawing No. PL-15 SCALE 1/1,000 DATE
--	---	---	--



AW(2) W=6.3m L=4.5m  
 VB L=34.4m  
 VB L=1.8m  
 CS-F1 L=9.6m CS-A1 L=26.4m

CS-A1 L=54.1m  
 VB L=54.1m  
 VB L=1.8m

REFER TO DETAIL  
 11 INTER SECTION DRAWING

REFER TO DETAIL  
 11 INTER SECTION DRAWING

IP-03(HS AVE.)  
 I.A.=12.56'02"  
 R= 320  
 C.L.=72.237  
 S.L.=2.049  
 T.L.=36.272

CS-G L=128.9m N=14  
 CS-A1 CS-A1 CS-A1 CS-A1 CS-A1 CS-A1 CS-A1 CS-A1 CS-A1 CS-A1  
 L=8.1m L=12.6m L=12.6m L=12.5m L=12.7m L=12.7m L=12.7m L=12.7m L=12.7m L=12.6m L=12.8m L=12.8m L=2.9m  
 CS-E N=1 CS-E N=1 CS-E N=1 CS-E N=1 CS-E N=1 CS-E N=1 CS-E N=1 CS-E N=1 CS-E N=1 CS-E N=1 CS-E N=1 CS-E N=1 CS-E N=1  
 U-300A U-300A U-300A U-300A U-300A U-300A U-300A U-300A U-300A U-300A U-300A U-300A U-300A  
 L=0.8m L=1.1m L=1.1m L=1.3m L=1.5m L=1.5m L=1.7m L=1.7m L=1.7m L=1.7m L=1.7m L=1.7m L=1.4m L=0.8m  
 CS-F N=1 CS-F N=1 CS-F N=1 CS-F N=1 CS-F N=1 CS-F N=1 CS-F N=1 CS-F N=1 CS-F N=1 CS-F N=1 CS-F N=1 CS-F N=1 CS-F N=1

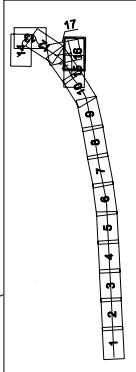
VB L=3.1m  
 VB L=159.4m

IP-02(HS AVE.)  
 I.A.=4-18'56"  
 R= -  
 C.L.=00.000  
 S.L.=0.000  
 T.L.=00.000

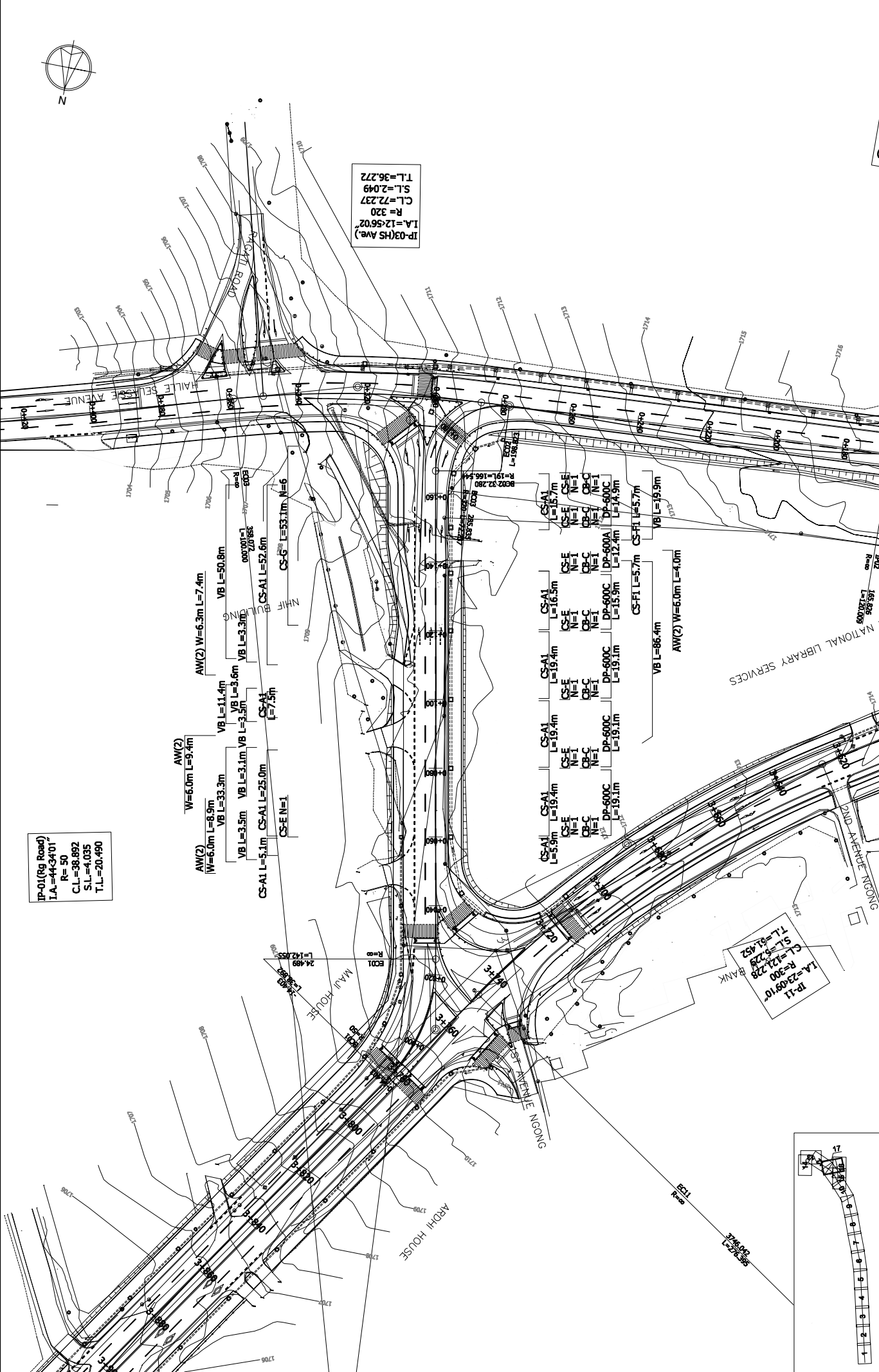
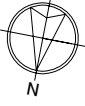
AW(1) W=11.3m L=4.5m

VB L=85.0m  
 VB L=3.1m

CS-G L=74.2m N=8  
 CS-A1 CS-A1 CS-A1 CS-A1 CS-A1 CS-A1  
 L=12.1m L=12.1m L=12.1m L=12.1m L=12.2m L=12.0m L=14.1m  
 CS-E N=1 CS-E N=1 CS-E N=1 CS-E N=1 CS-E N=1 CS-E N=1  
 U-300A U-300A U-300A U-300A U-300A U-300A  
 L=0.9m L=0.9m L=0.8m L=0.8m L=0.7m L=0.7m  
 CS-F N=1 CS-F N=1 CS-F N=1 CS-F N=1 CS-F N=1 CS-F N=1



KENYA URBAN ROAD AUTHORITY CITY COUNCIL OF NAIROBI MINISTRY OF LOCAL GOVERNMENT MINISTRY OF ROADS	JAPAN INTERNATIONAL COOPERATION AGENCY KATAHIRA & ENGINEERS INTERNATIONAL	THE PREPARATORY SURVEY ON THE PROJECT FOR DUALLING OF NAIROBI-DAGORETTI CORNER ROAD C60/C61  PLAN(16) Haile Selassie Avenue (STA.0+240 TO STA.0+458.072)	Drawing No. PL-16 SCALE 1/1,000 DATE
--	---	---	--



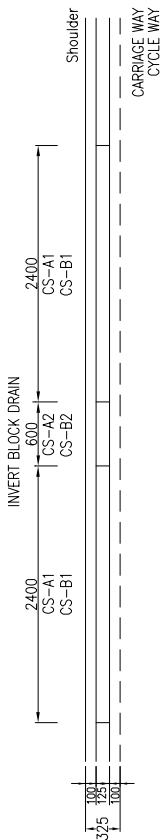
IP-01 (Big Road)  
 I.A. = 44.34101°  
 R = 50  
 C.L. = 36.892  
 S.L. = 4.035  
 T.L. = 20.490

IP-03 (HS Ave.)  
 I.A. = 12.5672°  
 R = 320  
 C.L. = 72.237  
 S.L. = 2.049  
 T.L. = 36.272

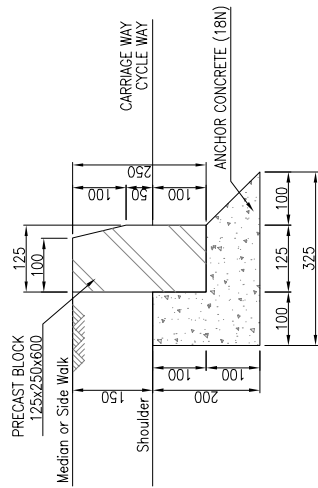
IP-11  
 I.A. = 23.0910°  
 R = 300  
 C.L. = 12.278  
 S.L. = 5.228  
 T.L. = 31.452

KENYA URBAN ROAD AUTHORITY CITY COUNCIL OF NAIROBI MINISTRY OF LOCAL GOVERNMENT MINISTRY OF ROADS	JAPAN INTERNATIONAL COOPERATION AGENCY KATAHIRA & ENGINEERS INTERNATIONAL	THE PREPARATORY SURVEY ON THE PROJECT FOR DUALLING OF NAIROBI-DAGORETTI CORNER ROAD C60/C61	TITLE :	PLAN (17)	PL-17
				Ragati Road STA.0-14.403 to STA.0+187.867	SCALE 1/1,000
				DATE	

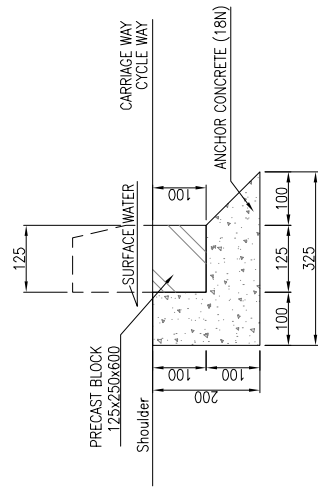




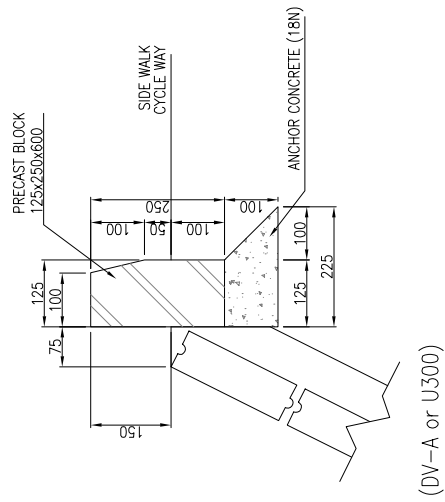
LAYOUT S=1/50



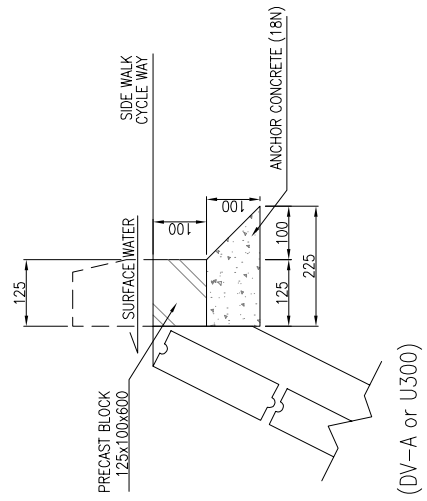
CURB STONE ( CS-A1 )  
S=1/10



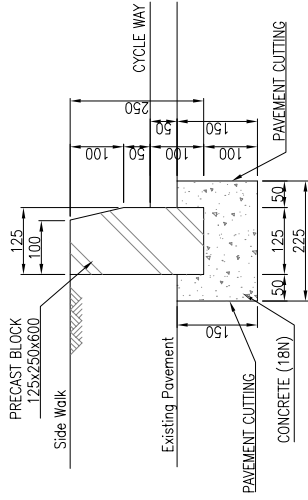
CURB STONE ( CS-A2 )  
S=1/10



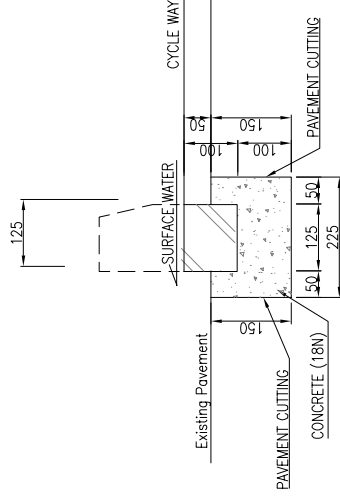
(DV-A or U300)  
CURB STONE ( CS-B1 )  
S=1/10



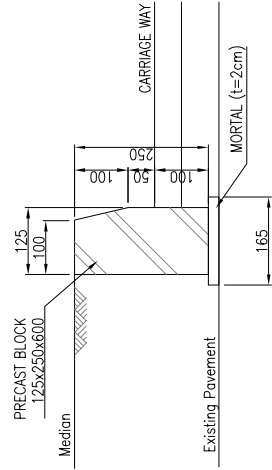
(DV-A or U300)  
CURB STONE ( CS-B2 )  
S=1/10



CURB STONE ( CS-C1 )  
S=1/10



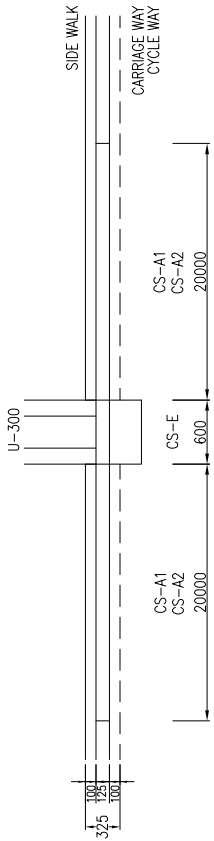
CURB STONE ( CS-C2 )  
S=1/10



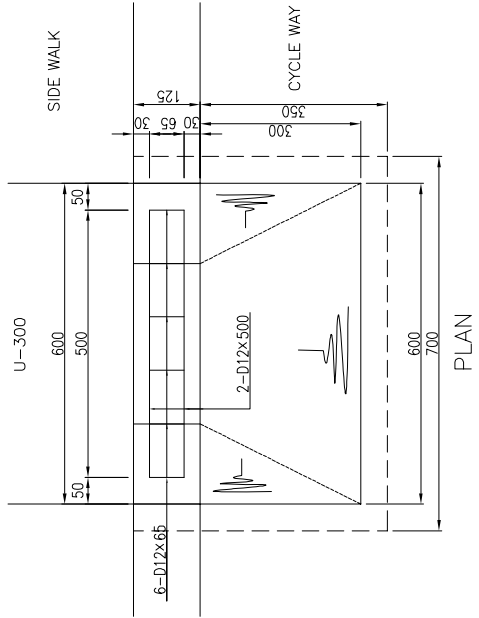
CURB STONE ( CS-D )  
S=1/10

KENYA URBAN ROAD AUTHORITY CITY COUNCIL OF NAIROBI MINISTRY OF LOCAL GOVERNMENT MINISTRY OF ROADS	JAPAN INTERNATIONAL COOPERATION AGENCY KATAHIRA & ENGINEERS INTERNATIONAL	THE PREPARATORY SURVEY ON THE PROJECT FOR DUALLING OF NAIROBI-DAGORETI CORNER ROAD C60/C61	TITLE :	CURB STONE (1)	Drawing No.	CT-1
			SCALE		AS SHOWN	
			DATE			

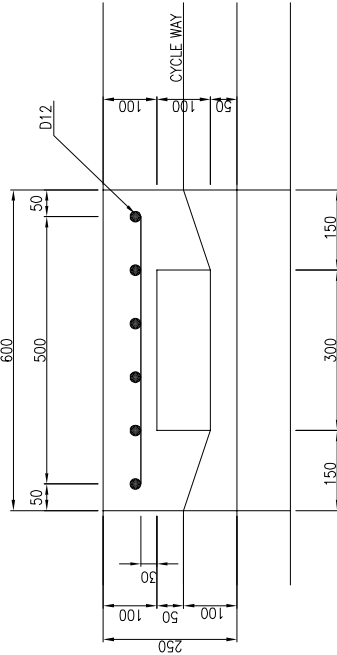




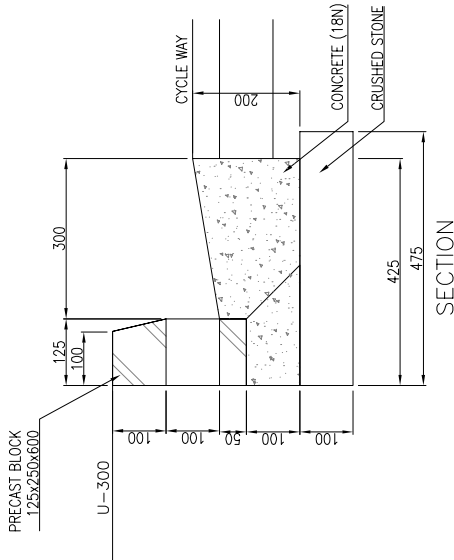
LAYOUT



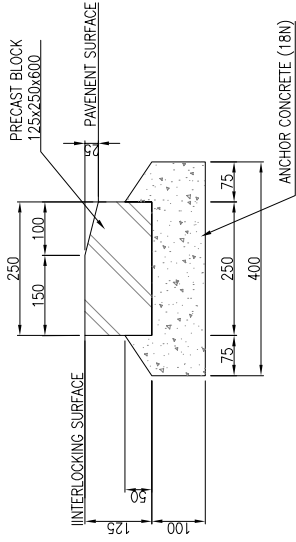
PLAN



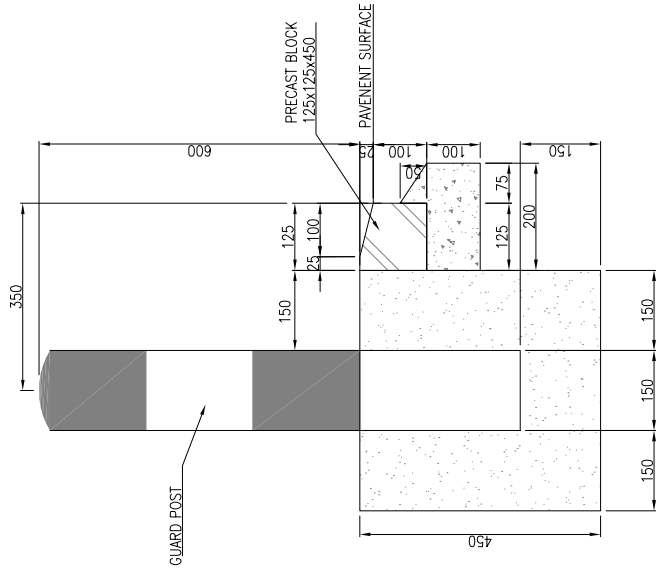
ELEVATION



SECTION



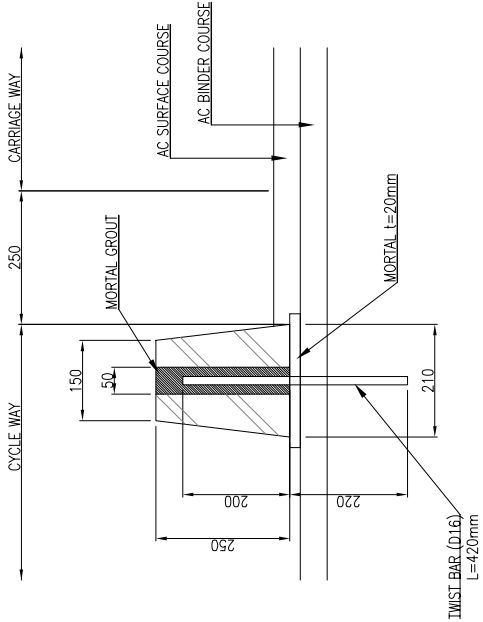
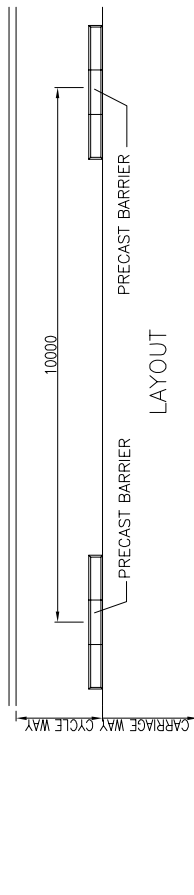
CURB STONE ( CS-F1 )  
S=1/10



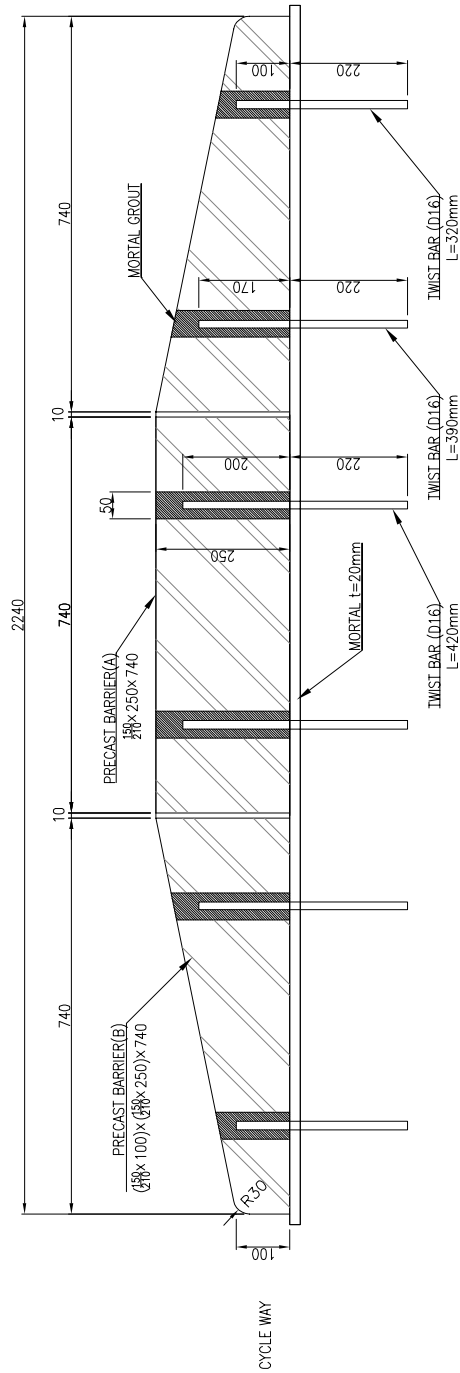
CURB STONE ( CS-F2 )  
S=1/10

CURB STONE ( CS-E )  
S=1/10

KENYA URBAN ROAD AUTHORITY CITY COUNCIL OF NAIROBI MINISTRY OF LOCAL GOVERNMENT MINISTRY OF ROADS	JAPAN INTERNATIONAL COOPERATION AGENCY KATAHIRA & ENGINEERS INTERNATIONAL	THE PREPARATORY SURVEY ON THE PROJECT FOR DUALLING OF NAIROBI-DAGORETI CORNER ROAD C60/C61		TITLE:	CURB STONE (2)	Drawing No. CT-2
		SCALE	AS SHOWN	DATE		

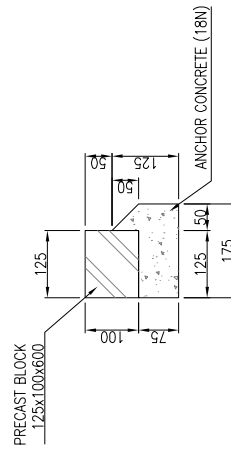


SECTION



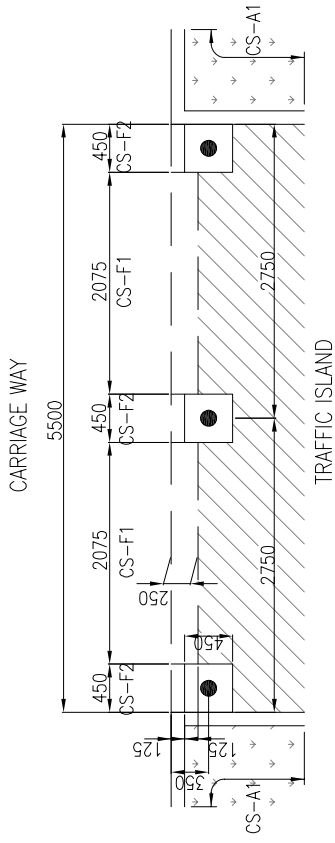
SIDE VIEW

CURB STONE ( CS-G )  
S=1/10

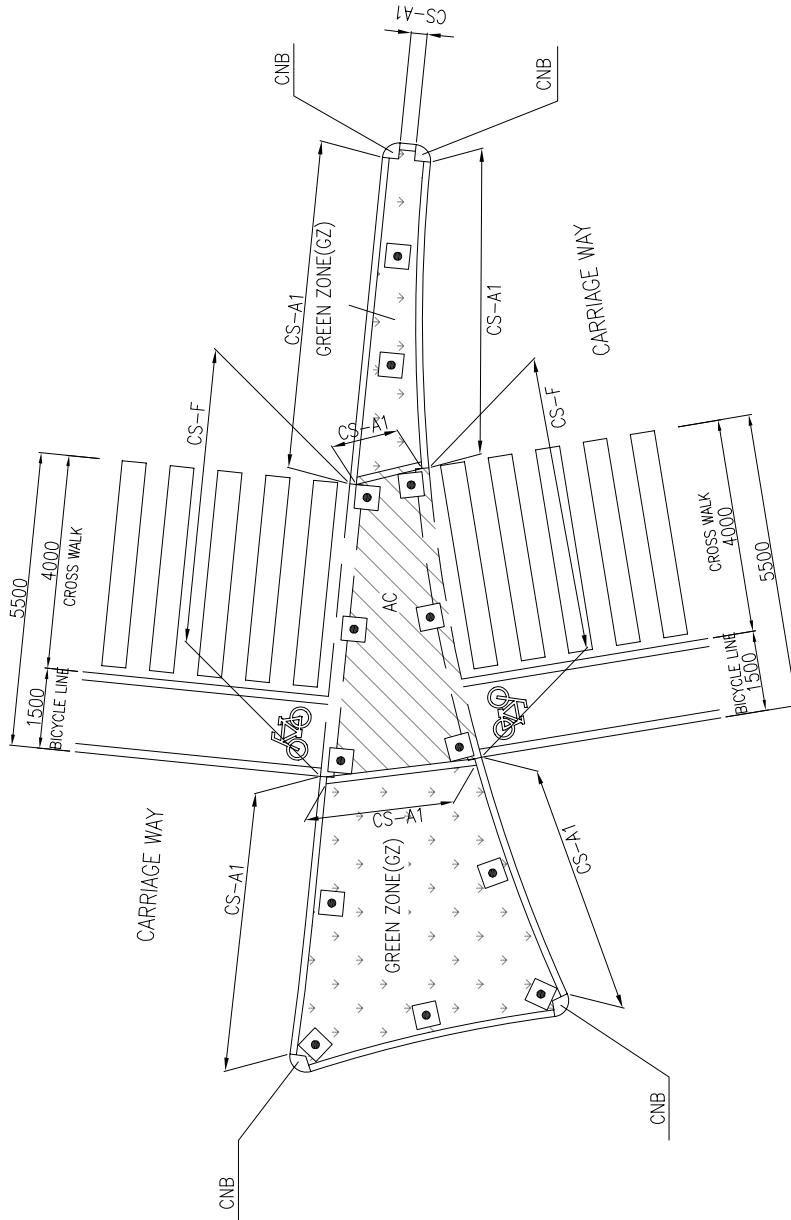


VERGE BLOCK ( VB )  
S=1/10

KENYA URBAN ROAD AUTHORITY CITY COUNCIL OF NAIROBI MINISTRY OF LOCAL GOVERNMENT MINISTRY OF ROADS	JAPAN INTERNATIONAL COOPERATION AGENCY KATAHIRA & ENGINEERS INTERNATIONAL	THE PREPARATORY SURVEY ON THE PROJECT FOR DUALLING OF NAIROBI-DAGORETI CORNER ROAD C60/C61	TITLE :		
			CURB STONE (3)		
Drawing No.	CT-3	SCALE	AS SHOWN	DATE	

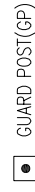


CS-C1 & C2 LAYOUT  
S=1/50



TRAFFIC ISLAND LAYOUT  
CORNER BLOCK ( CNB )  
S=1/100

LEGEND



KENYA URBAN ROAD AUTHORITY CITY COUNCIL OF NAIROBI MINISTRY OF LOCAL GOVERNMENT MINISTRY OF ROADS	JAPAN INTERNATIONAL COOPERATION AGENCY KATAHIRA & ENGINEERS INTERNATIONAL	THE PREPARATORY SURVEY ON THE PROJECT FOR DUALLING OF NAIROBI-DAGORETI CORNER ROAD C60/C61	TITLE:	CURB STONE (4) CURB STONE LAYOUT AT TRAFFIC ISLAND	Drawing No.	CT-4
					SCALE	AS SHOWN
				DATE		