

図 3-2-3.12 Mwanyanya 変電所 制御棟 平面図

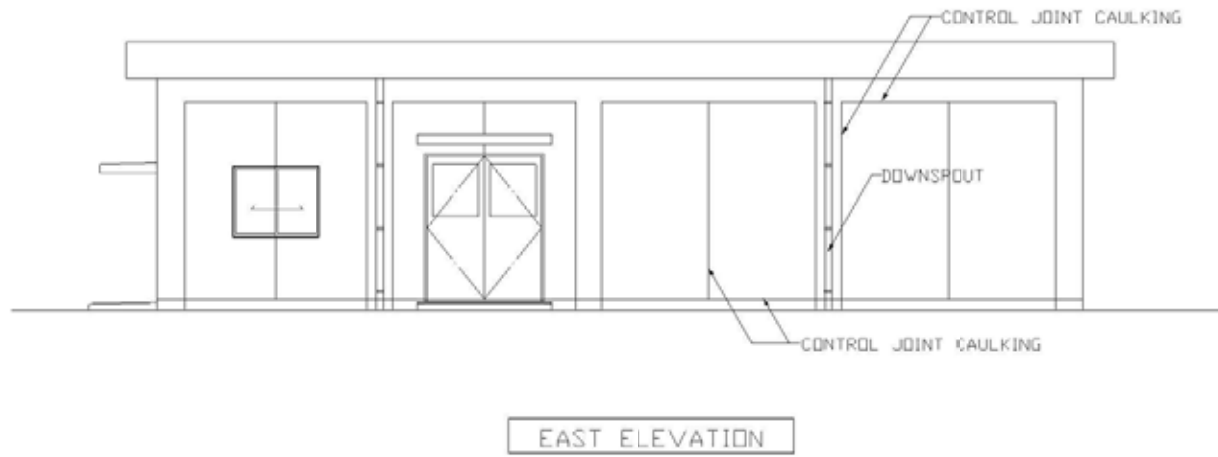
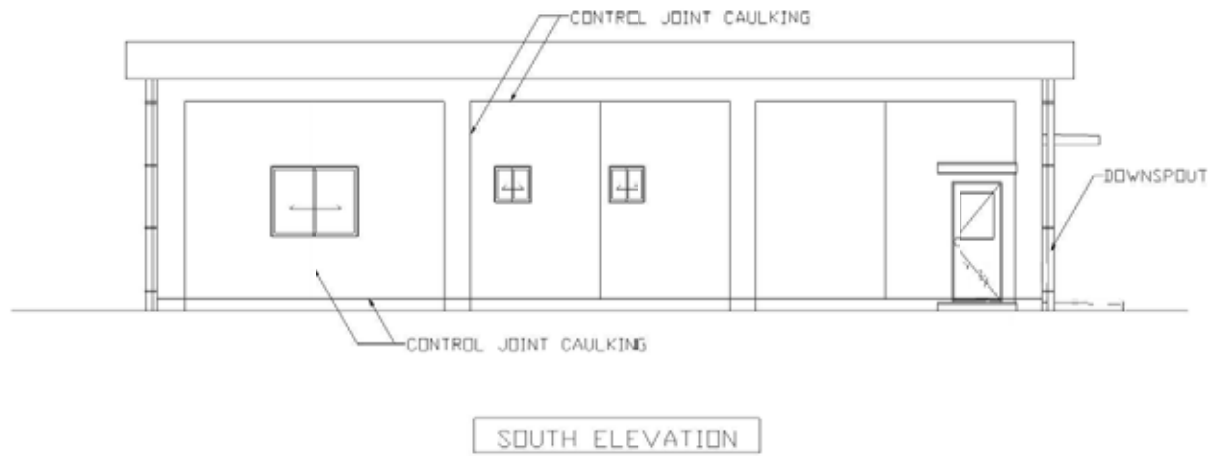


図 3-2-3.13 Mwanyanya 変電所 制御棟 立面図（南及び東）

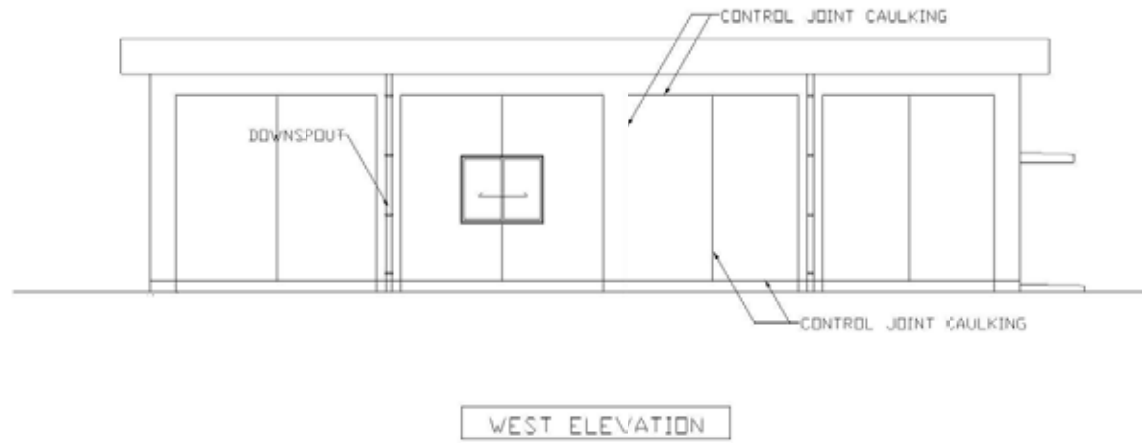
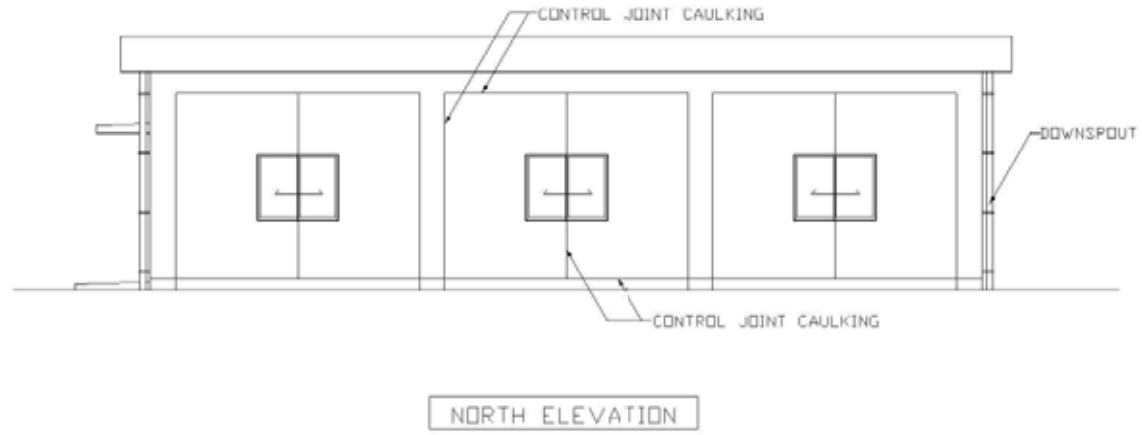
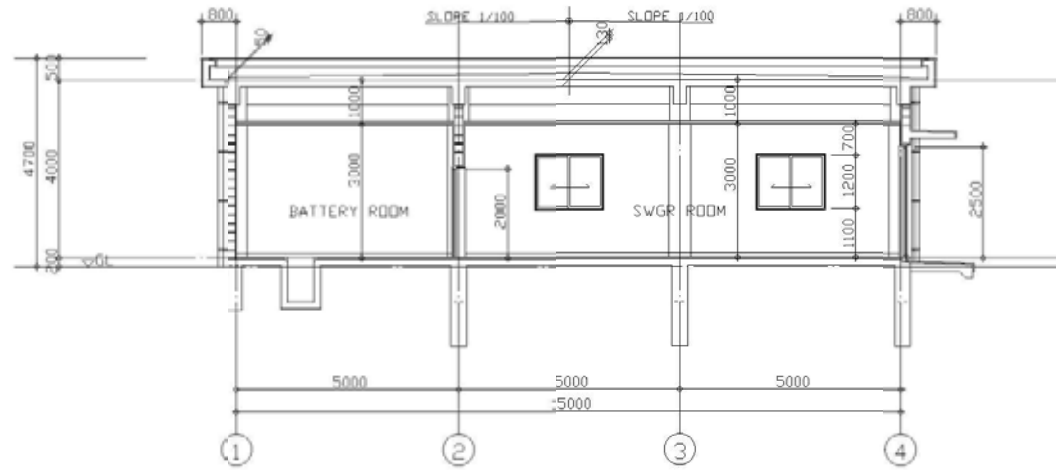
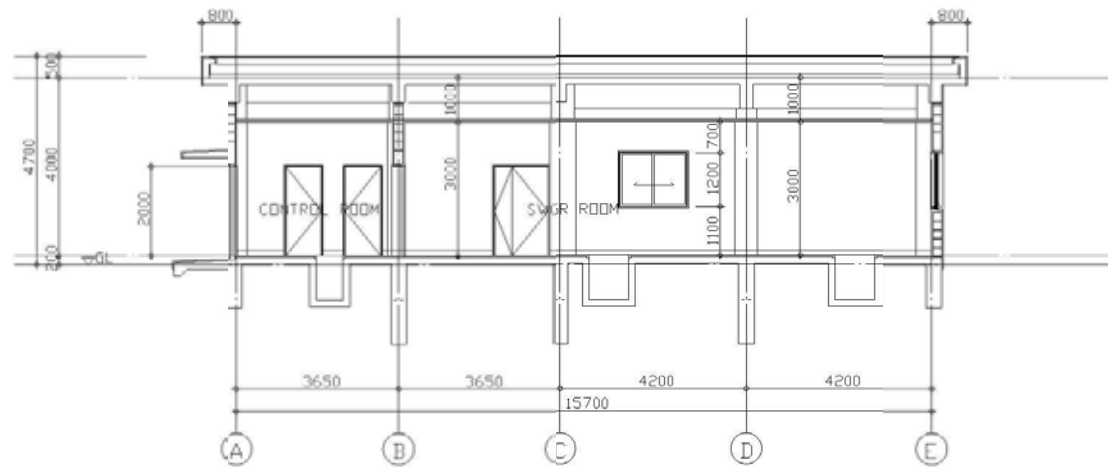


図 3-2-3.14 Mwanyanya 変電所 制御棟 立面図（北及び西）



A - A SECTION S=1/100



B - B SECTION S=1/100

図 3-2-3.15 Mwanyanya 変電所 制御棟 断面図

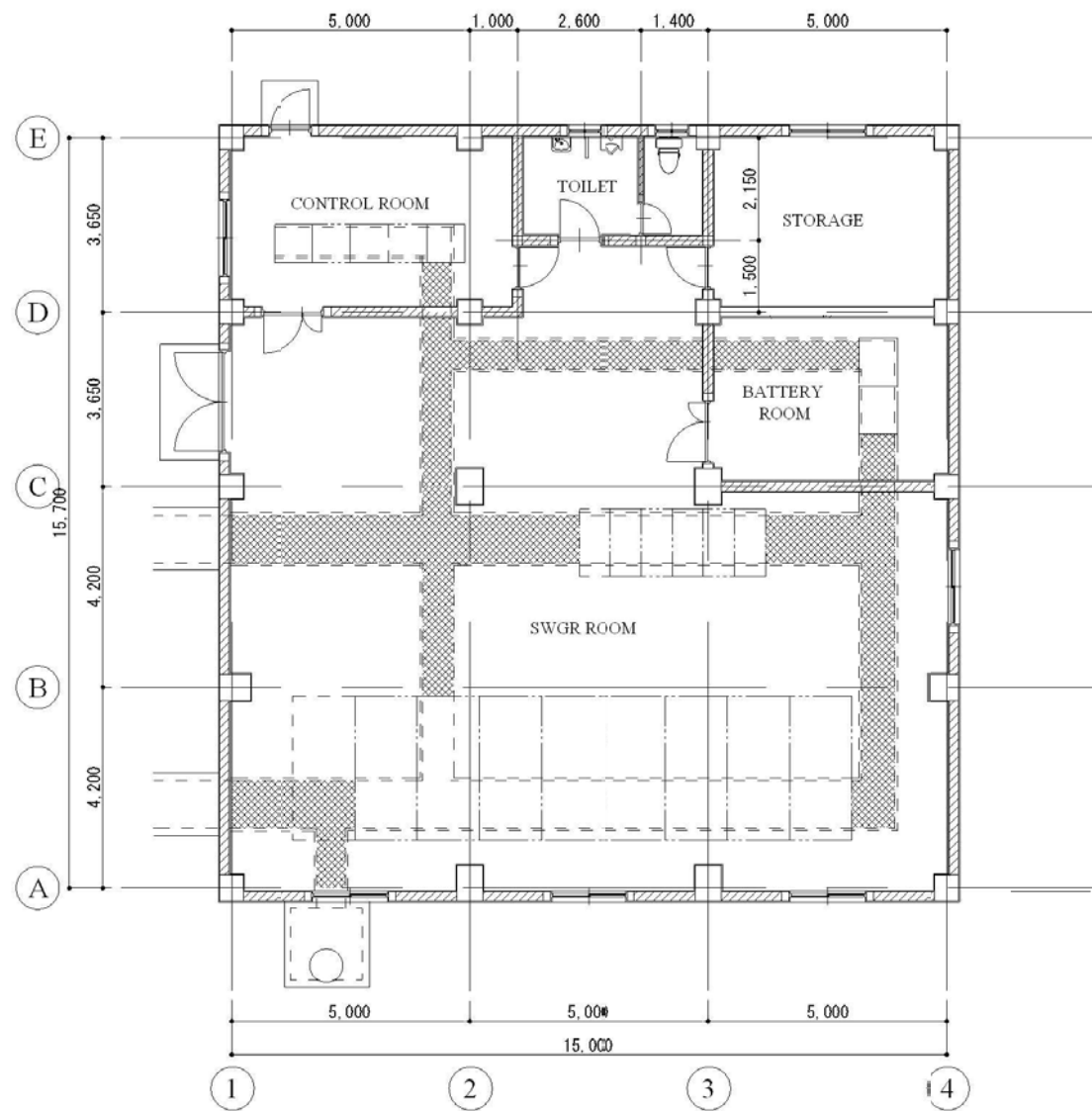


図 3-2-3.16 Welezo 変電所 制御棟 平面図

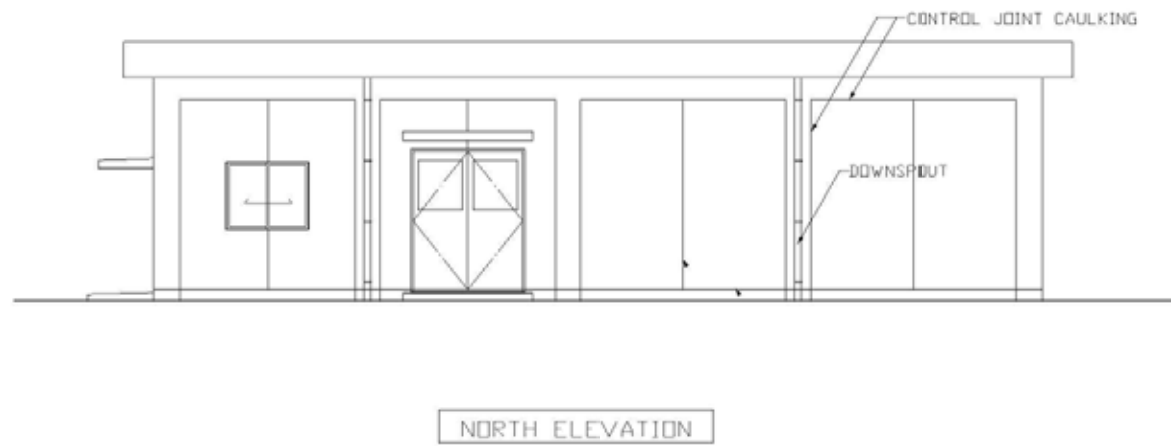
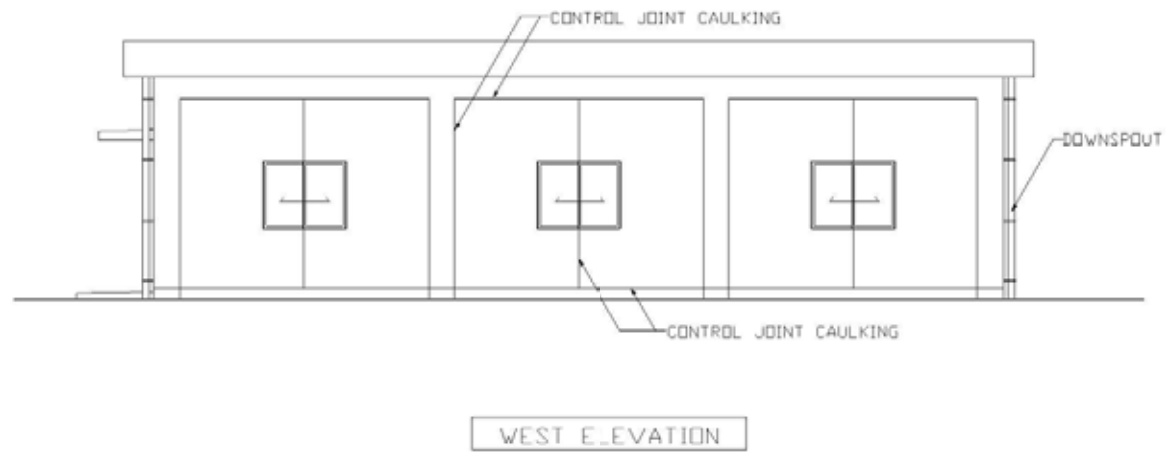
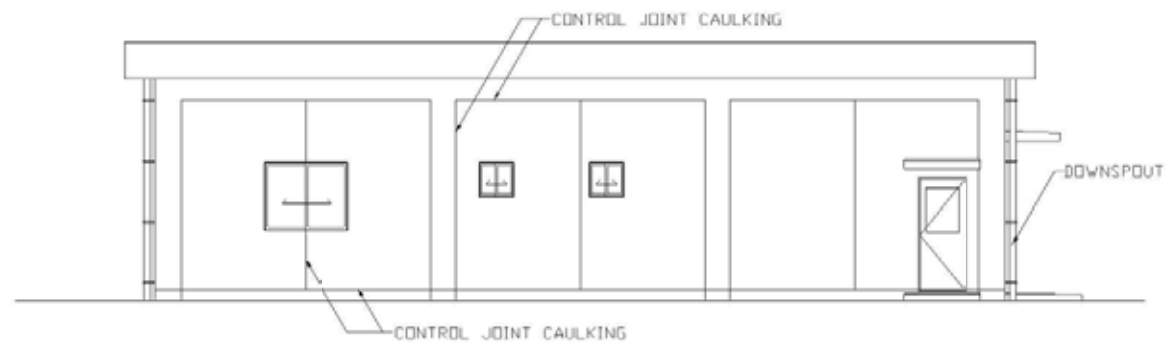
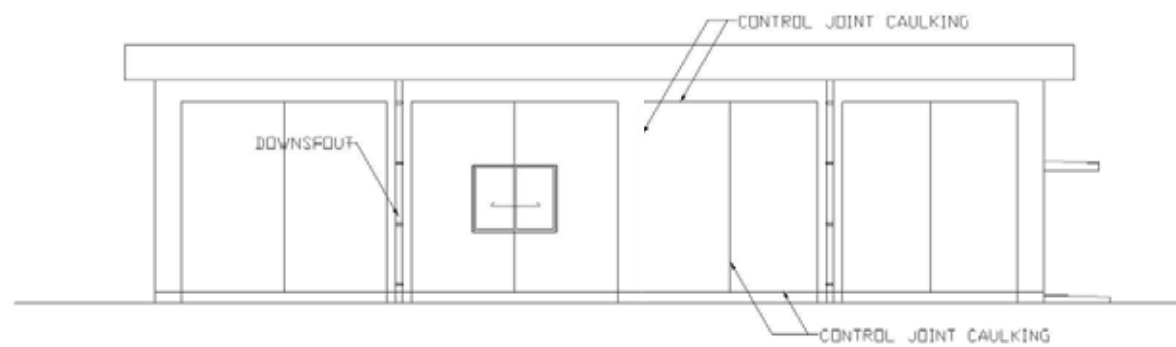


图 3-2-3.17 Welezo 变电所 制御棟 立面图 (西及び北)



EAST ELEVATION



SOUTH ELEVATION

図 3-2-3.18 Welezo 変電所 制御棟 立面図 (東及び南)

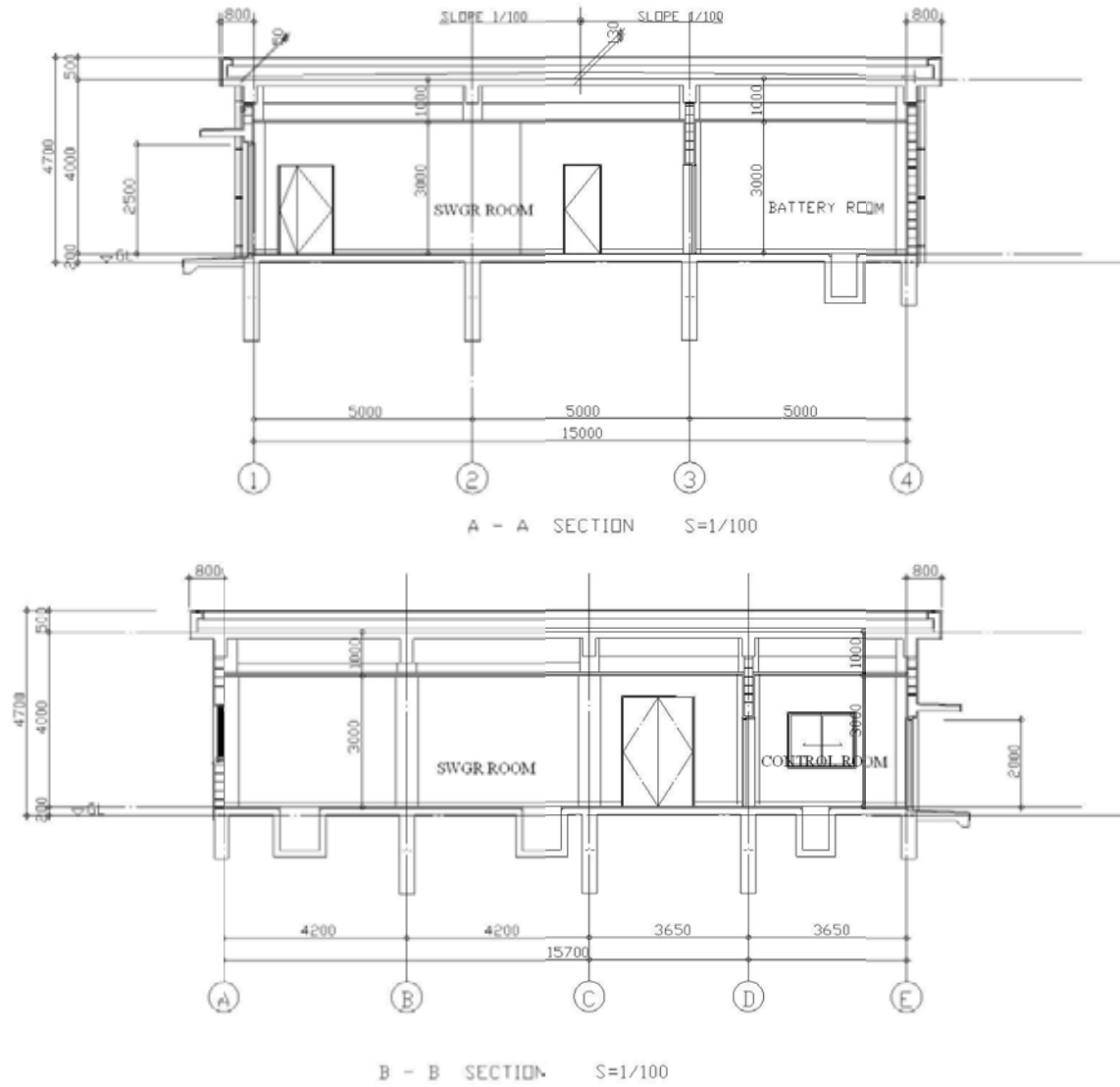


图 3-2-3.19 Welezo 变电所 制御棟 平面図

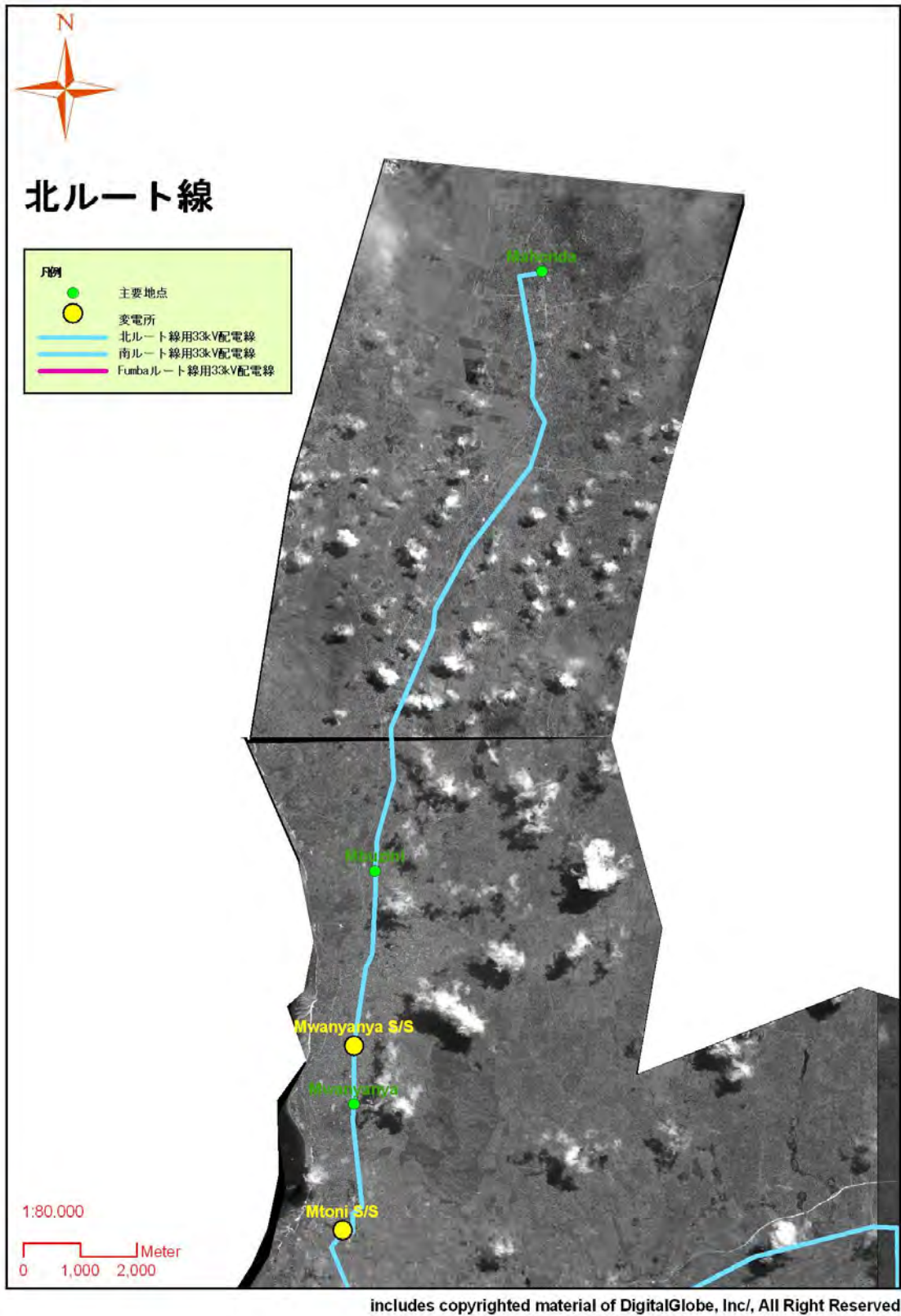
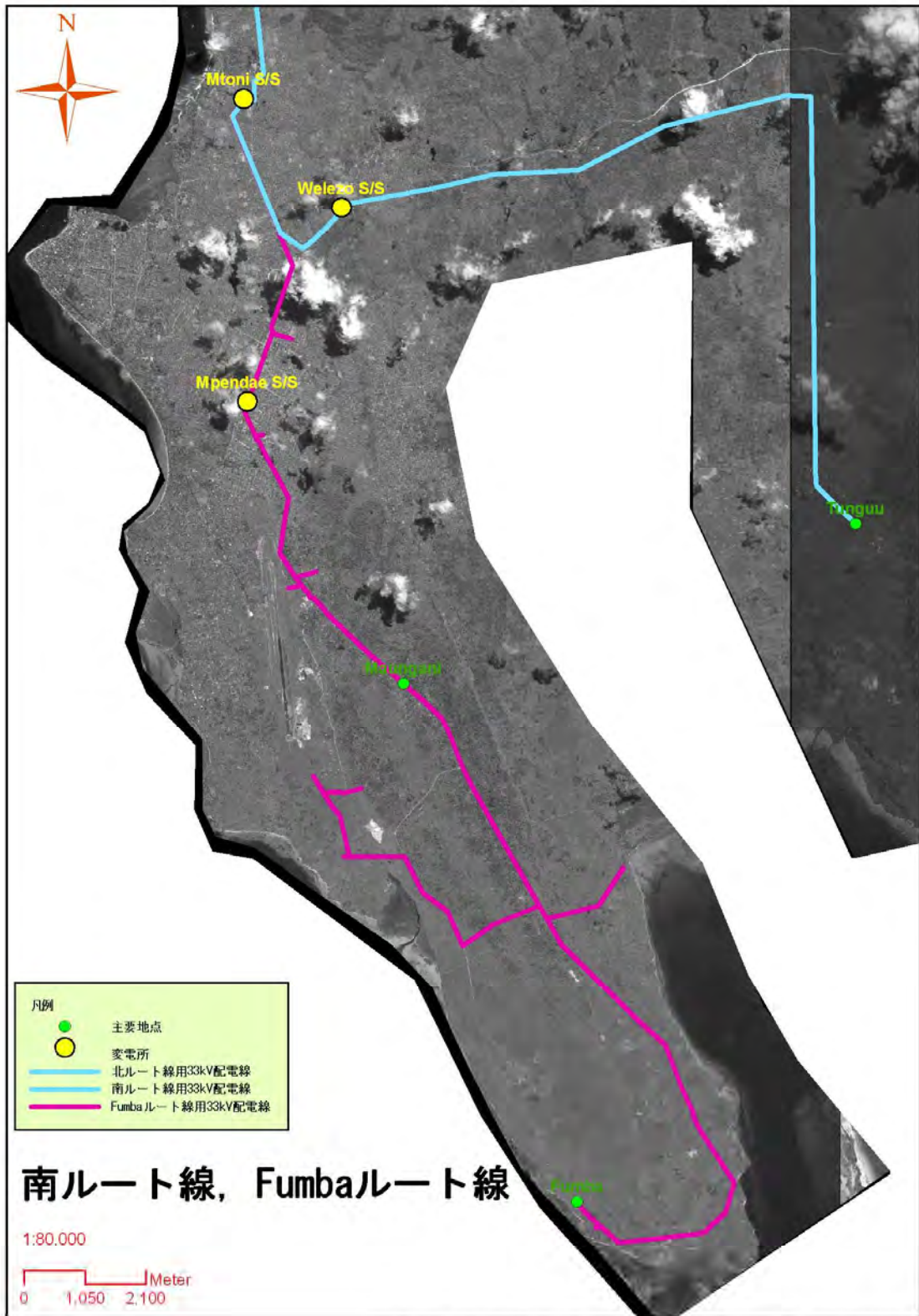


図 3-2-3.20 33 kV 配電線ルート図（北ルート線）



includes copyrighted material of DigitalGlobe, Inc/, All Right Reserved

図 3-2-3.21 33 kV 配電線ルート図 (南ルート線、Fumba ルート線)

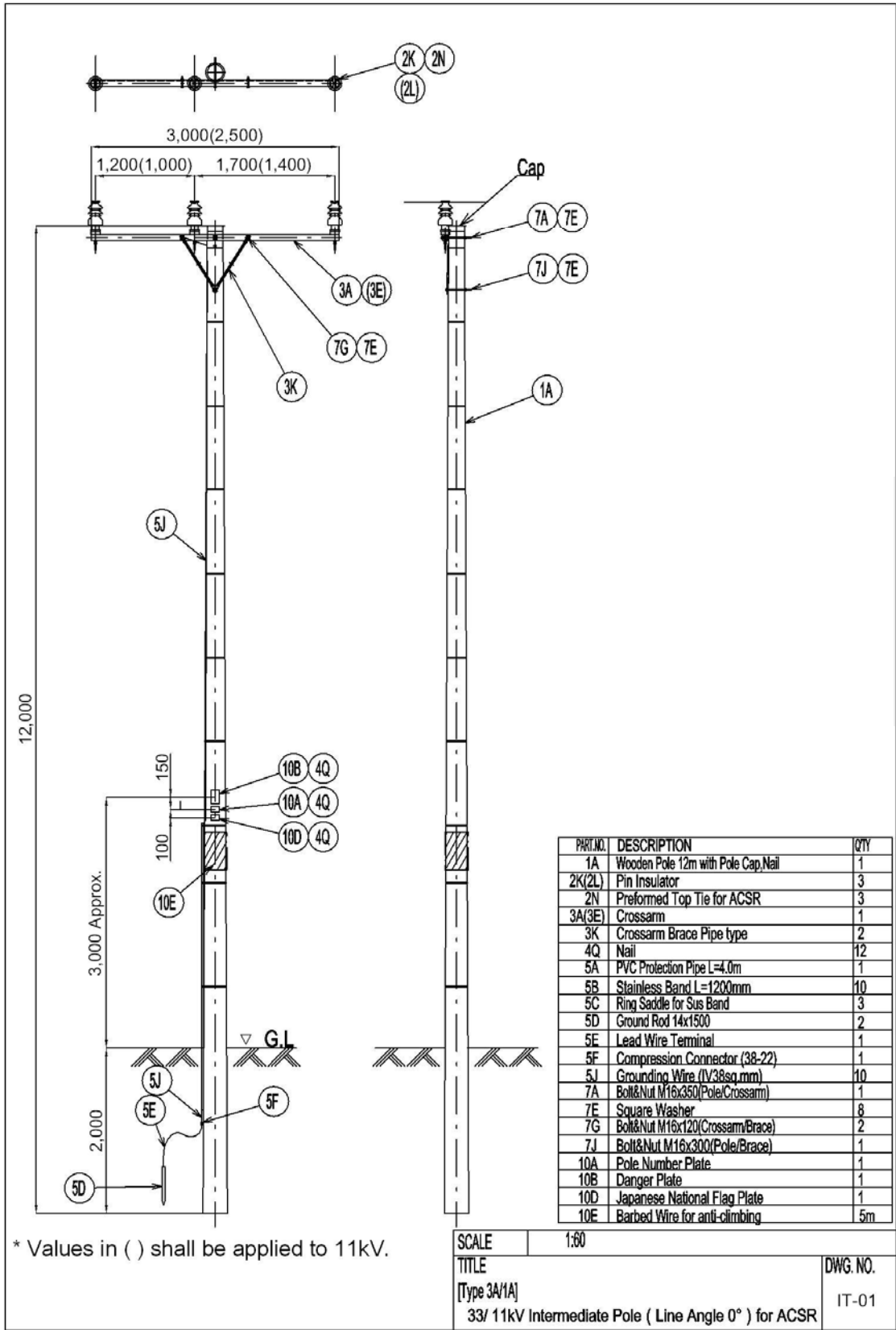


図 3-2-3.22 33/11 kV 引通し柱(0度) ACSR 用

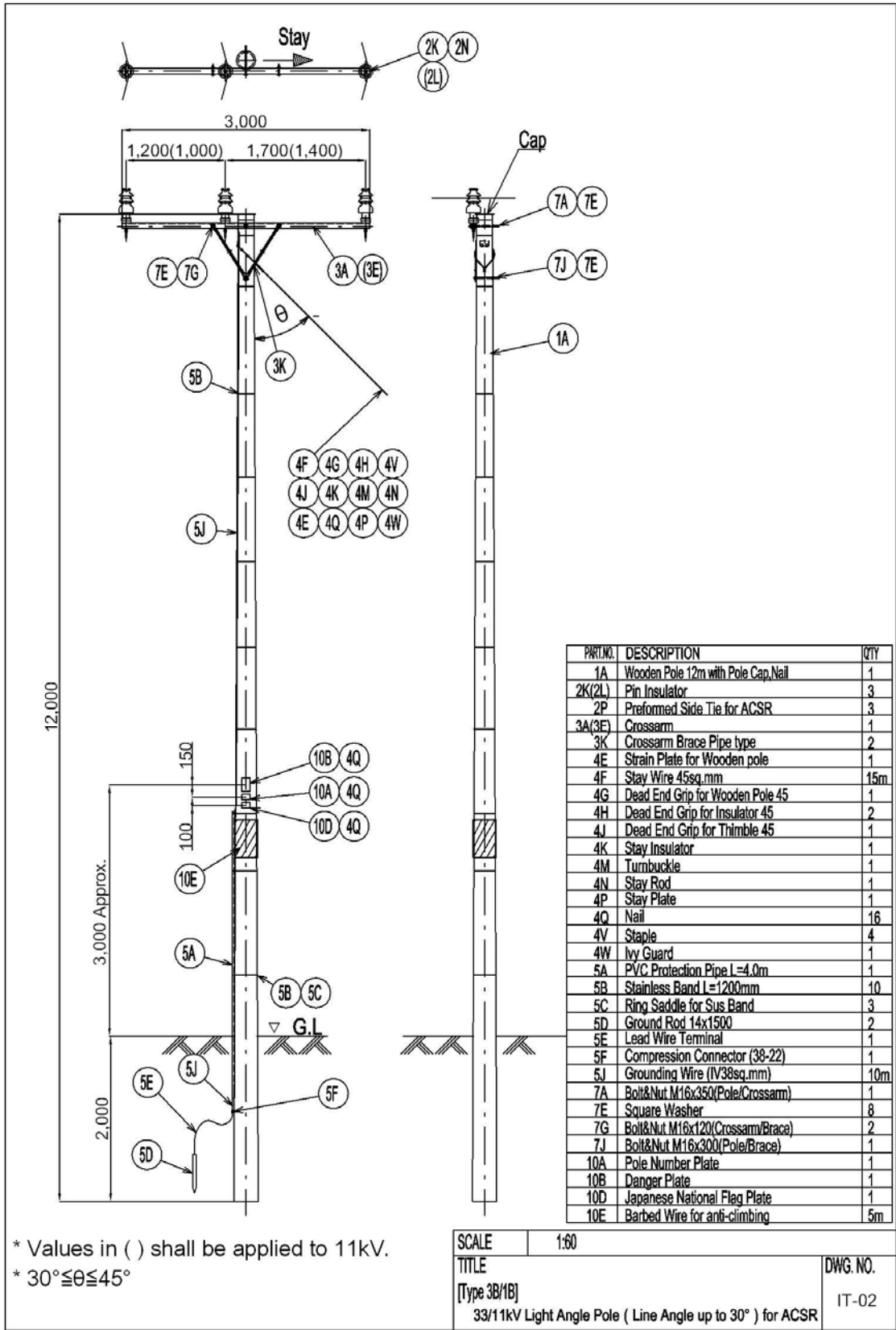


図 3-2-3.23 33 kV 軽角度柱(0~30度) ACSR 用

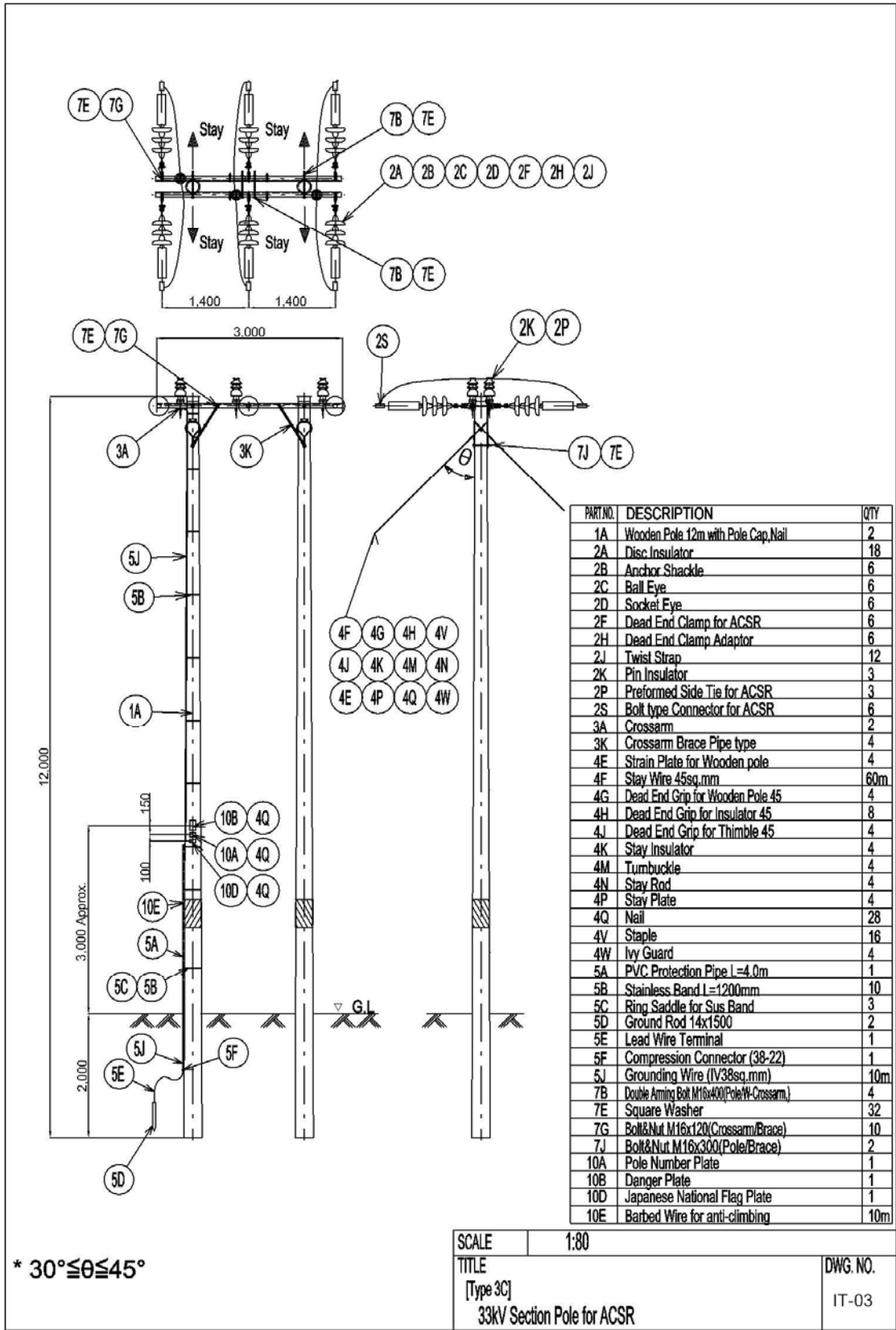
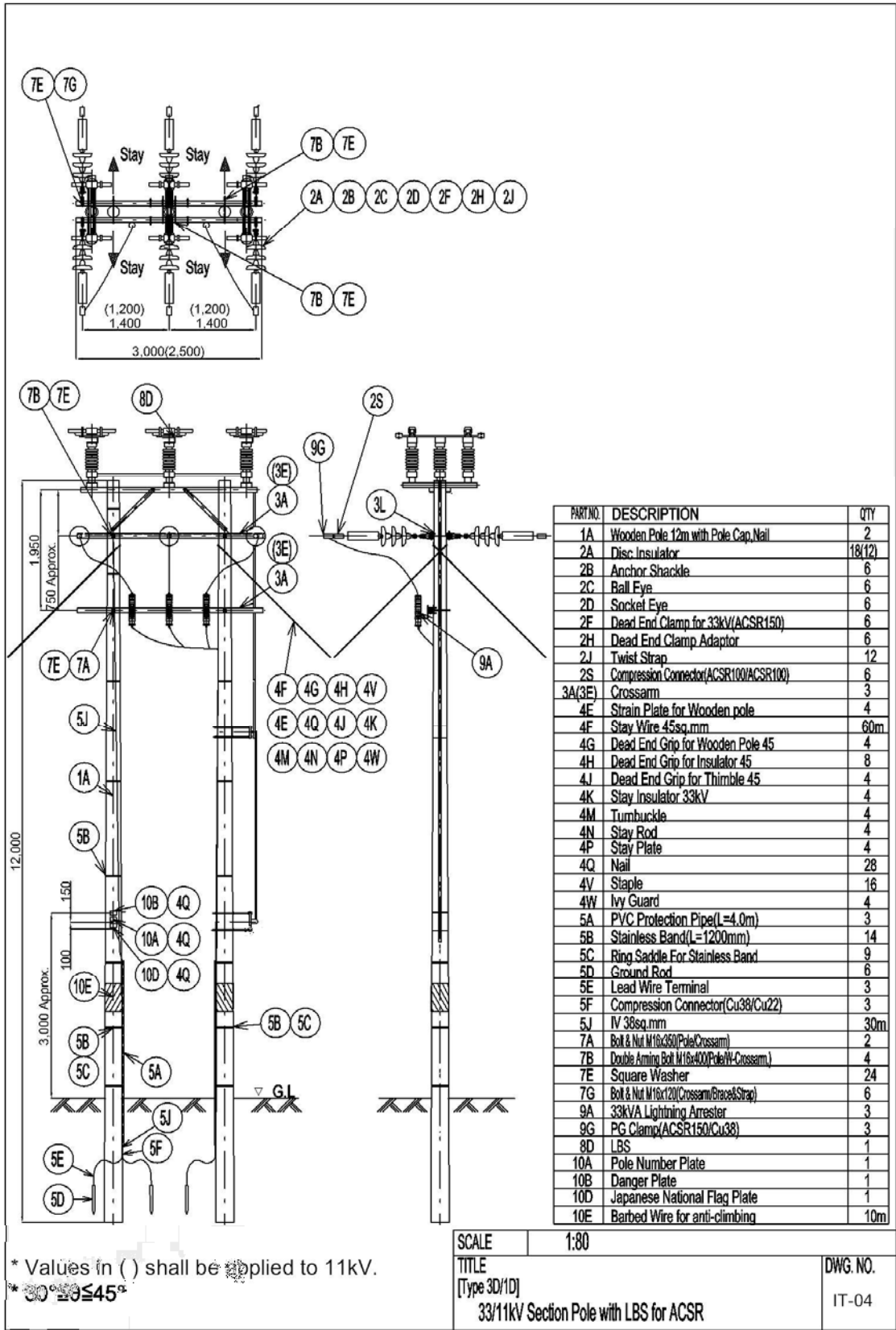


図 3-2-3.24 33 kV 両引留柱 ACSR 用



* Values in () shall be applied to 11kV.
 * $30^\circ \leq \theta \leq 45^\circ$

SCALE	1:80	DWG. NO.
TITLE	[Type 3D/1D] 33/11kV Section Pole with LBS for ACSR	IT-04

図 3-2-3.25 33 kV 両引留柱 (負荷開閉器付き) ACSR 用

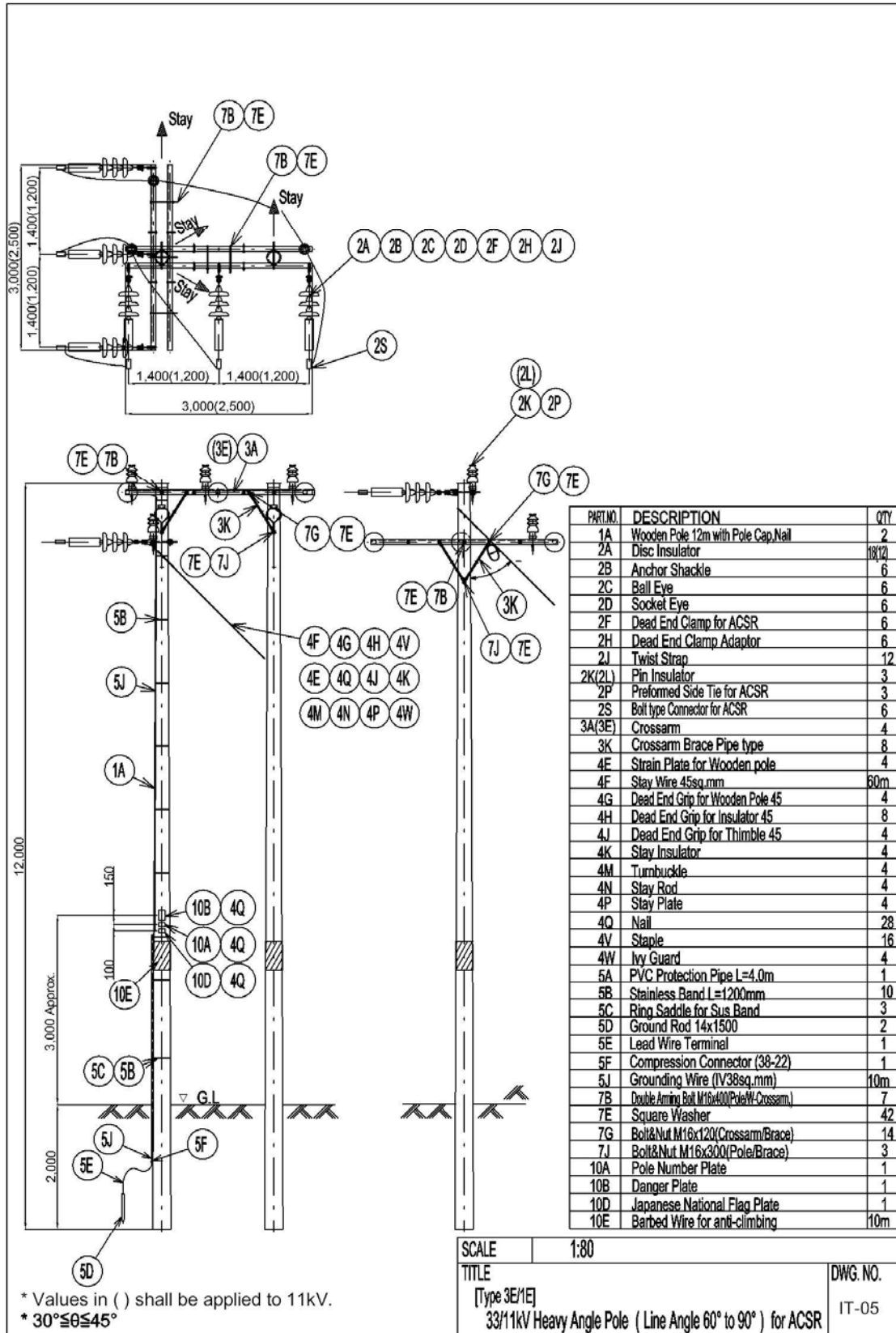
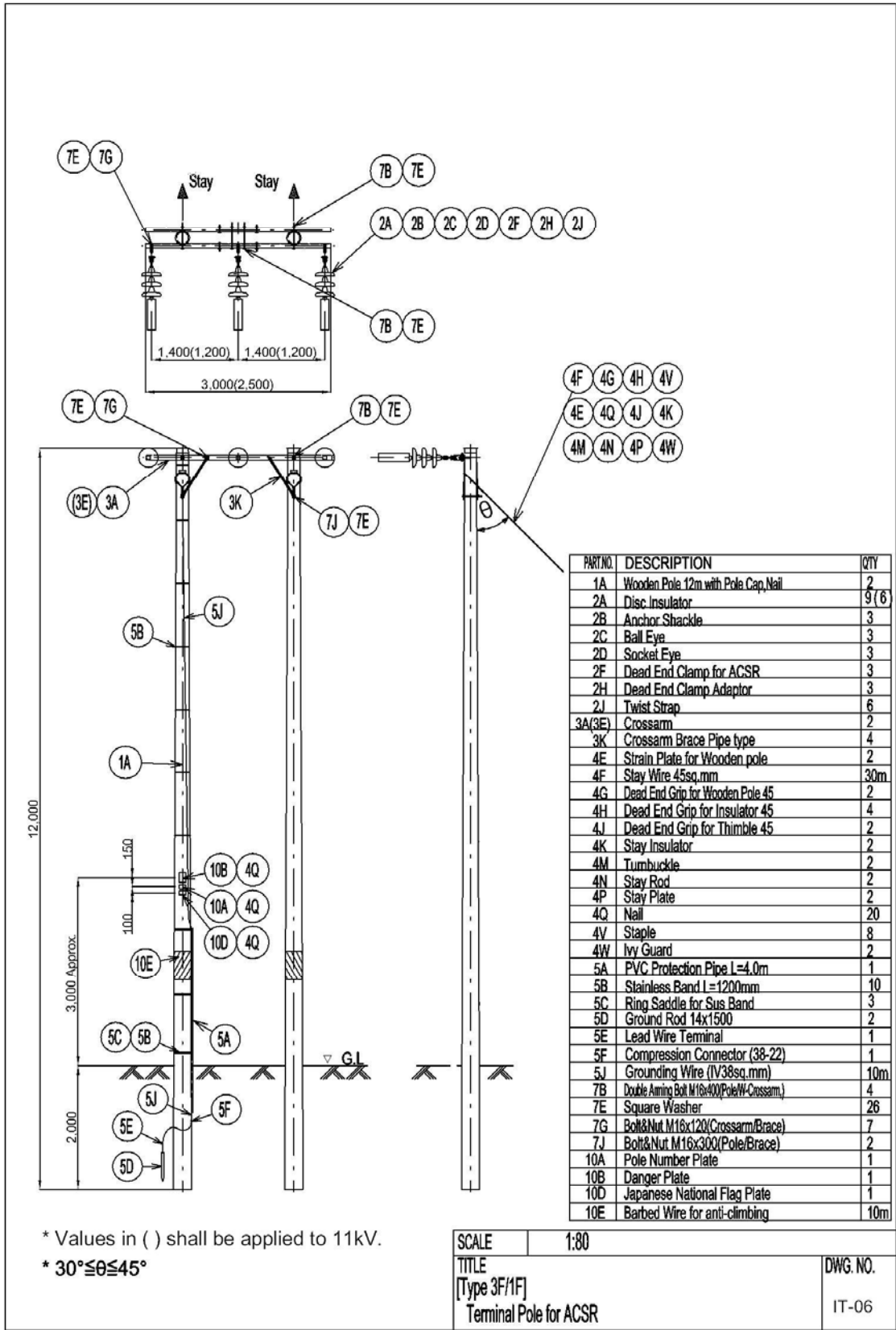


図 3-2-3.26 33/11 kV 強角度柱 (60 ~ 90 度) ACSR 用



* Values in () shall be applied to 11kV.
 * 30° ≤ θ ≤ 45°

SCALE	1:80	DWG. NO.	IT-06
TITLE	[Type 3F/1F] Terminal Pole for ACSR		

図 3-2-3.27 33/11 kV 引留柱 ACSR 用

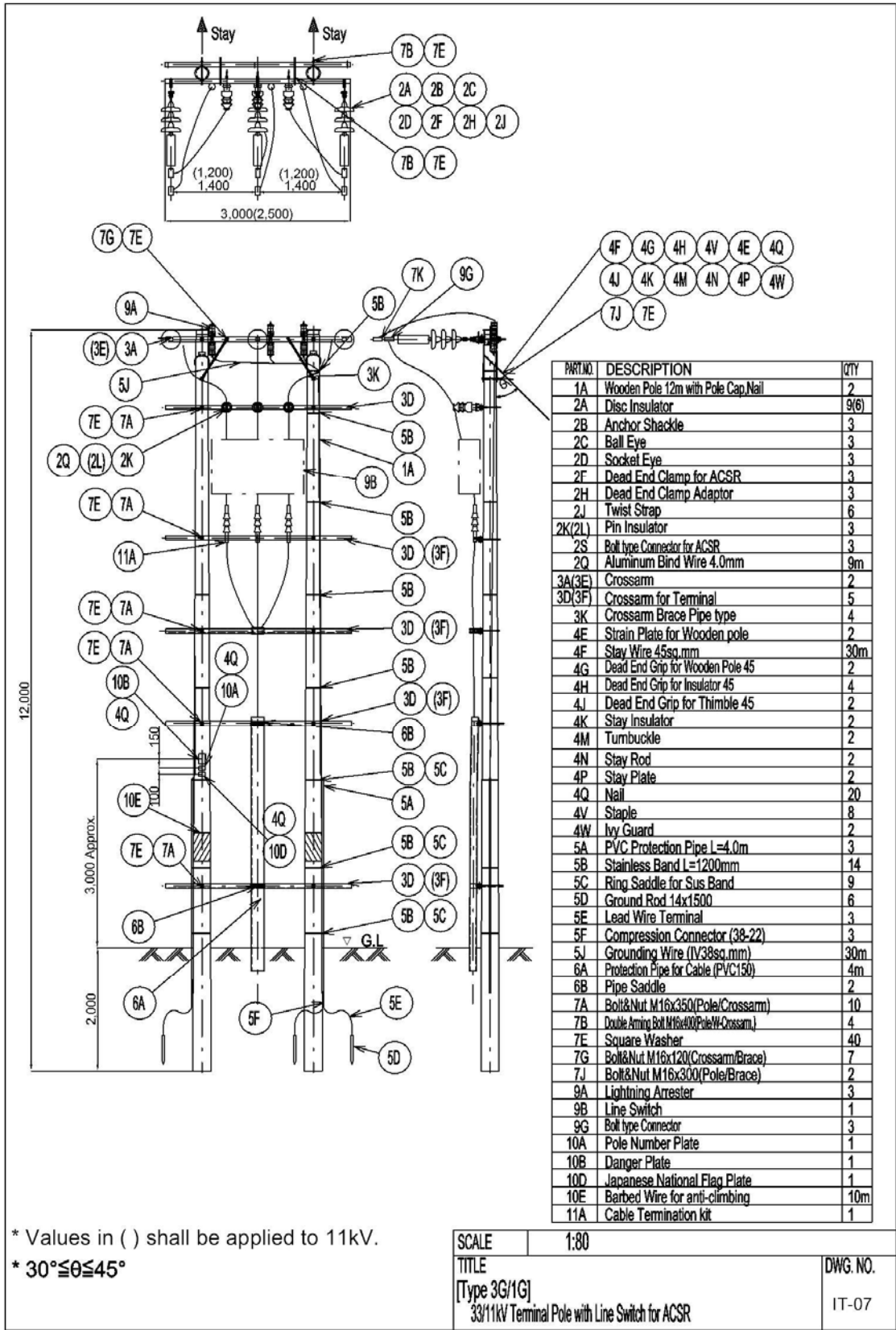


図 3-2-3.28 33/11 kV 引留柱 (ラインスイッチ付き) ACSR 用