

**THE PREPARATORY SURVEY
ON
THE PROJECT FOR CONSTRUCTION
OF NEAK LOEUNG BRIDGE
IN
THE KINGDOM OF CAMBODIA**

< DRAWINGS >

March 2010

JAPAN INTERNATIONAL COOPERATION AGENCY

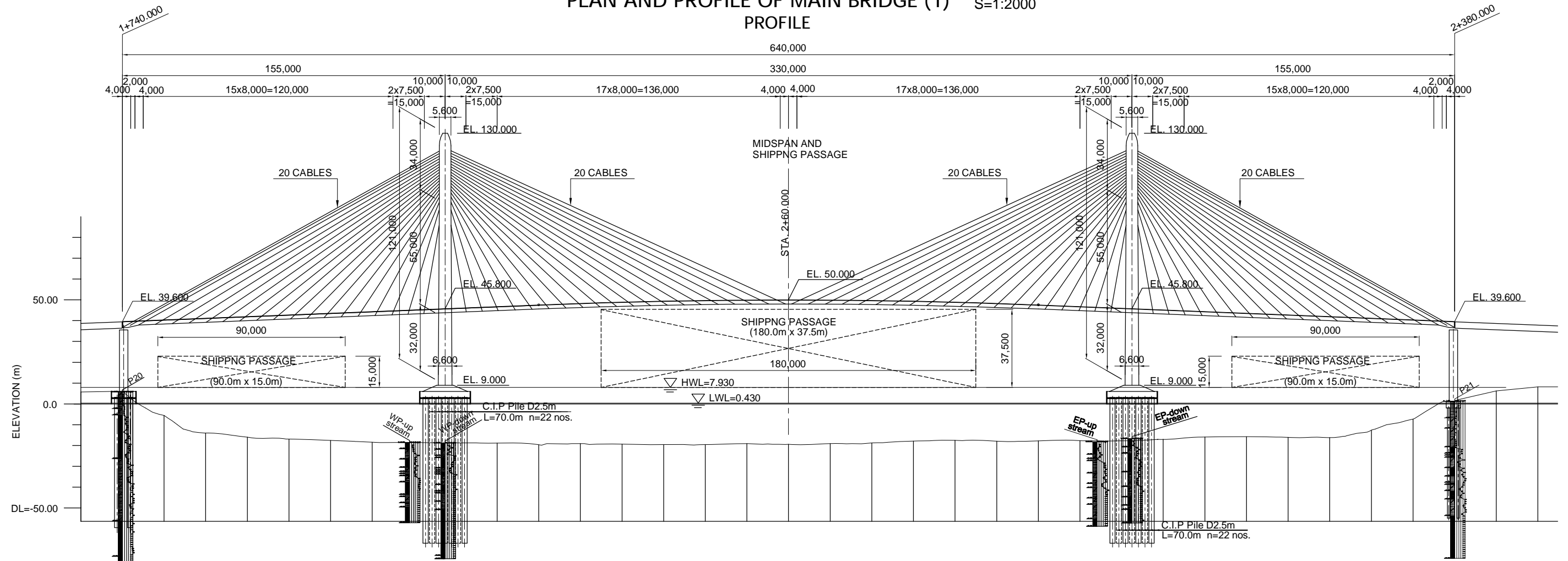
**CHODAI CO., LTD.
ORIENTAL CONSULTANTS CO., LTD.**

DRAWING SCHEDULE

CABLE STAYED BRIDGE	
No	DRAWING TITLE
C-1	PLAN AND PROFILE OF MAIN BRIDGE (1)
C-2	PLAN AND PROFILE OF MAIN BRIDGE (2)
C-3	GENERAL VIEW OF GIRDER (1)
C-4	GENERAL VIEW OF GIRDER (2)
C-5	GENERAL VIEW OF STAY CABLE (1)
C-6	GENERAL VIEW OF PYLON (1)
C-7	GENERAL VIEW OF FOUNDATION (WEST PYLON)
C-8	GENERAL VIEW OF FOUNDATION (EAST PYLON)
C-9	GENERAL VIEW OF SUBSTRUCTURE AND FOUNDATION (P20)
C-10	GENERAL VIEW OF SUBSTRUCTURE AND FOUNDATION (P21)
APPROACH BRIDGE	
No	DRAWING TITLE
P-1	PLAN AND PROFILE OF APPROACH BRIDGE (A1 to P10)
P-2	PLAN AND PROFILE OF APPROACH BRIDGE (P10 to P20)
P-3	PLAN AND PROFILE OF APPROACH BRIDGE (P21 to A2)
P-4	PLAN AND PROFILE OF APPROACH BRIDGE (SECTION)
P-5	GENERAL ARRANGEMENT OF SUPERSTRUCTURE (1)
P-6	SUBSTRUCTURE (3)
P-7	SUBSTRUCTURE (4)
P-8	SUBSTRUCTURE (5)
P-9	SUBSTRUCTURE (6)
P-10	SUBSTRUCTURE (7)
P-11	SUBSTRUCTURE (8)

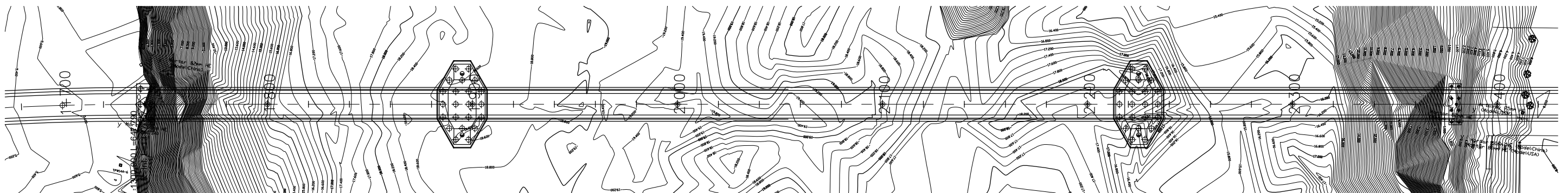
ROAD	
No	DRAWING TITLE
R-1	PLAN (1) & (2)
R-2	PLAN (3) & (4)
R-3	PLAN (5) & (6)
R-4	PLAN (7) & (8)
R-5	PROFILE - MAIN (1)
R-6	PROFILE - MAIN (2)
R-7	PROFILE - MAIN (3)
R-8	PROFILE - MAIN (4)
R-9	PROFILE - MAIN (5)
R-10	PROFILE - MINOR ROAD (1)
R-11	PROFILE - MINOR ROAD (2)
R-12	TYPICAL CROSS SECTION (1)
R-13	TYPICAL CROSS SECTION (2)
R-14	TYPICAL CROSS SECTION (3)
R-15	BOX CULVERT (1)
R-16	BOX CULVERT (2)
R-17	BOX CULVERT (3)
R-18	BOX CULVERT (4)
R-19	BOX CULVERT (5)
R-20	BOX CULVERT (6)
R-21	RETAINING WALL (1)
R-22	RETAINING WALL (2)
R-23	RETAINING WALL (3)
R-24	SOFT GROUND TREATMENT

PLAN AND PROFILE OF MAIN BRIDGE (1) S=1:2000
PROFILE



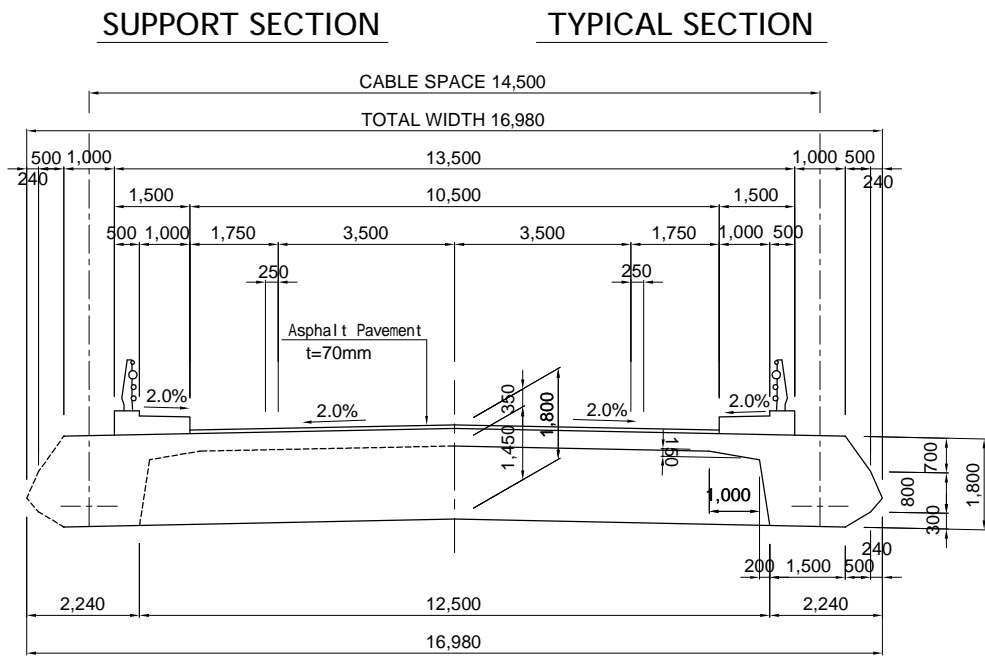
GRADE	VCL=220.0m VCR=10,000 4.000% L=750.000m										VCL=240.0m VCR=3,000										VCL=170.0m VCR=3,778																	
DESIGN LEVEL	39.6000	40.4000	41.2000	42.0000	42.8000	43.6000	44.4000	45.2000	46.0000	46.8000	47.6000	48.3333	48.9333	49.4000	49.7333	49.9333	50.0000	49.9333	49.7333	49.4000	48.9333	48.3333	47.6000	46.8000	46.0000	45.2000	44.4000	43.6000	42.8000	42.0000	39.6000							
EXISTING HEIGHT	6.071	5.477	13.966	15.970	16.911	17.561	18.360	18.582	18.700	18.784	18.666	19.070	19.316	19.537	19.533	19.073	18.440	19.075	18.730	17.839	17.473	17.844	17.677	17.657	17.733	16.939	15.840	15.785	16.039	16.166	12.529	1.315						
CHAINAGE	1+740	1+760	1+780	1+800	1+820	1+840	1+860	1+880	1+895	1+900	1+920	1+940	1+960	1+980	2+000	2+020	2+040	2+060	2+080	2+100	2+120	2+140	2+160	2+180	2+200	2+220	2+225	2+240	2+260	2+280	2+300	2+320	2+340	2+360	2+380	2+400		
CURVE ELEMENT	R=																																					
SUPER ELEVATION	2.00%																																					

PLAN

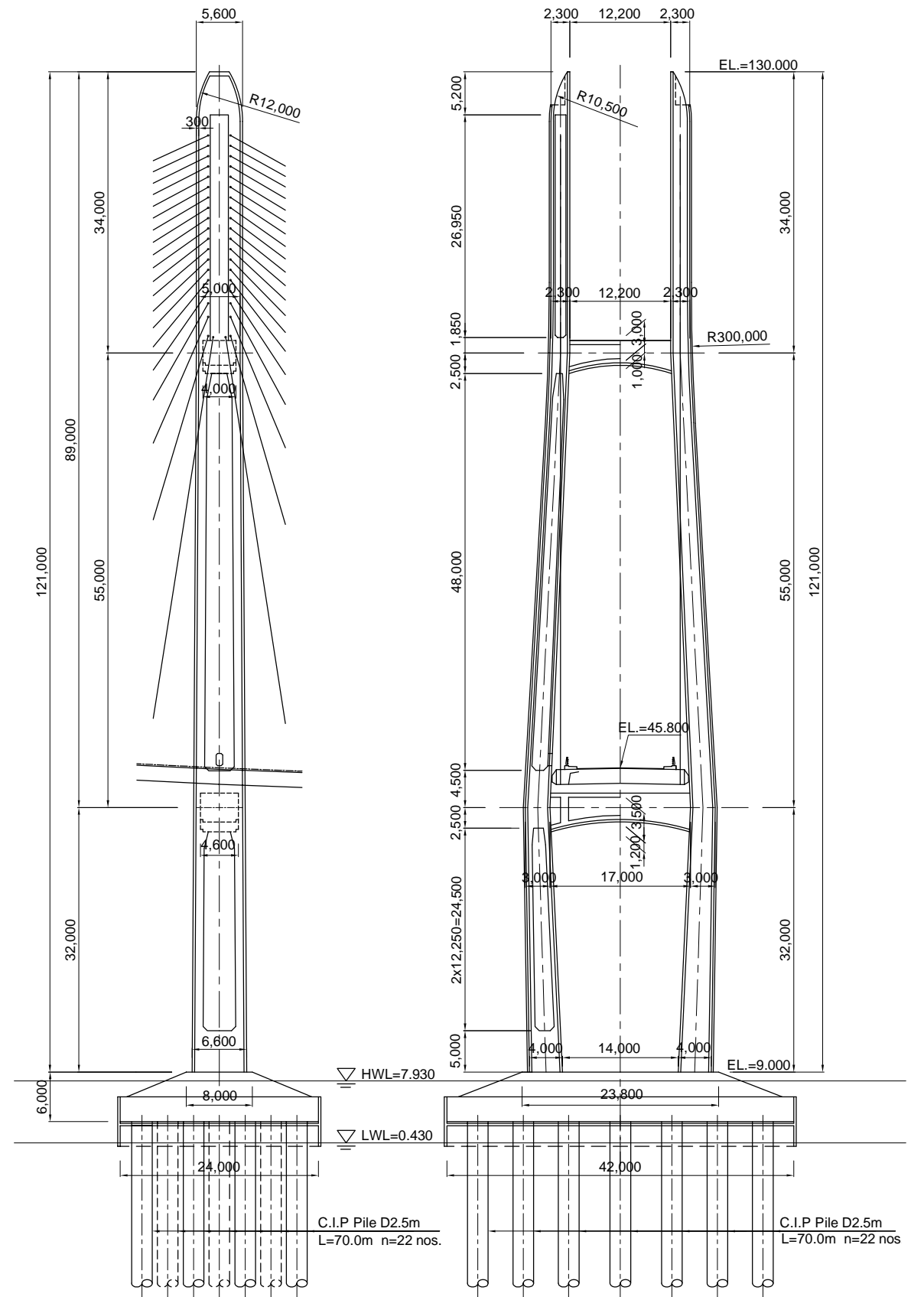


GENERAL VIEW OF MAIN BRIDGE (2)

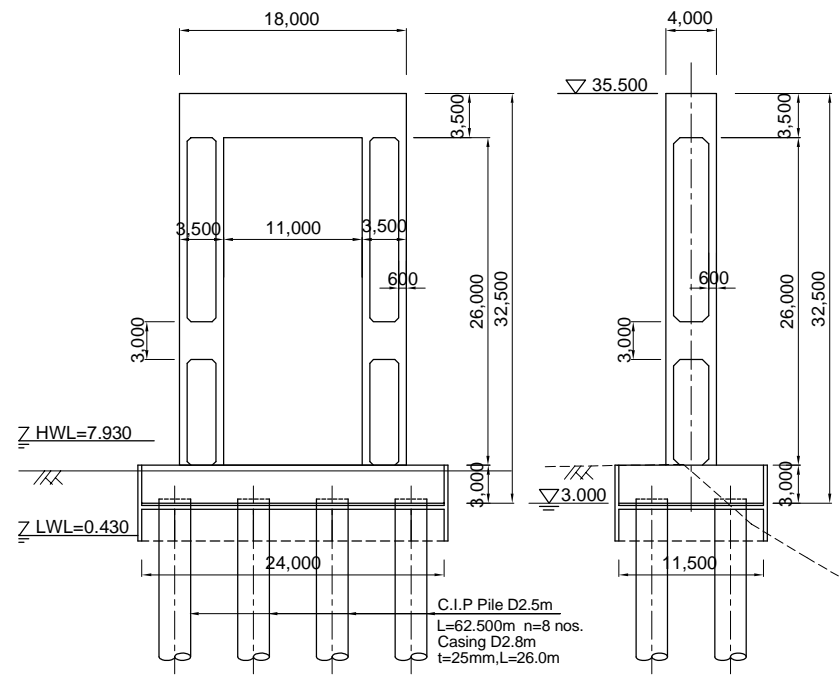
GIRDER CROSS SECTION S=1:150



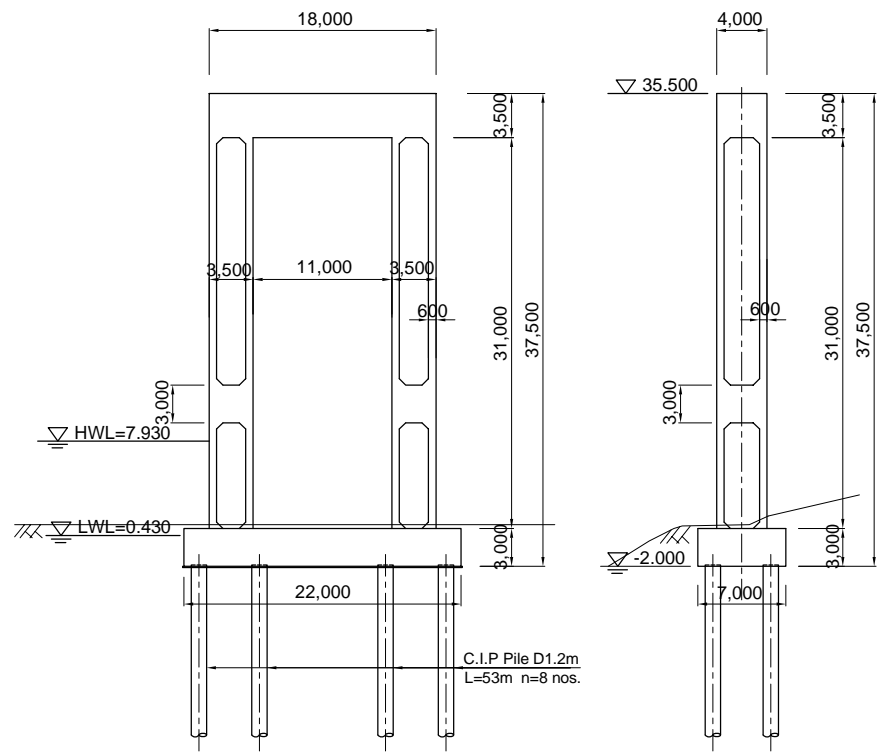
PYLON S=1:700



P20 S=1:600

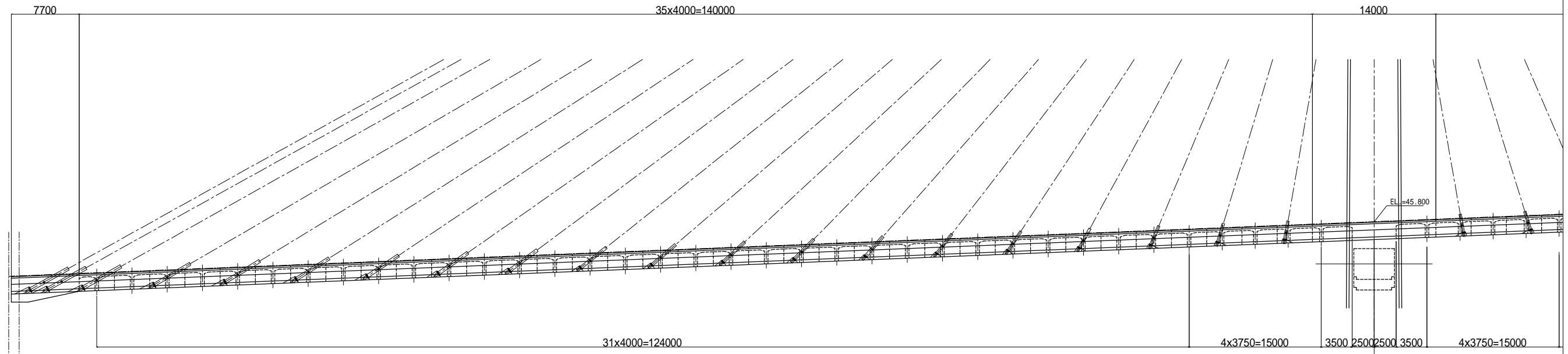


P21 S=1:600

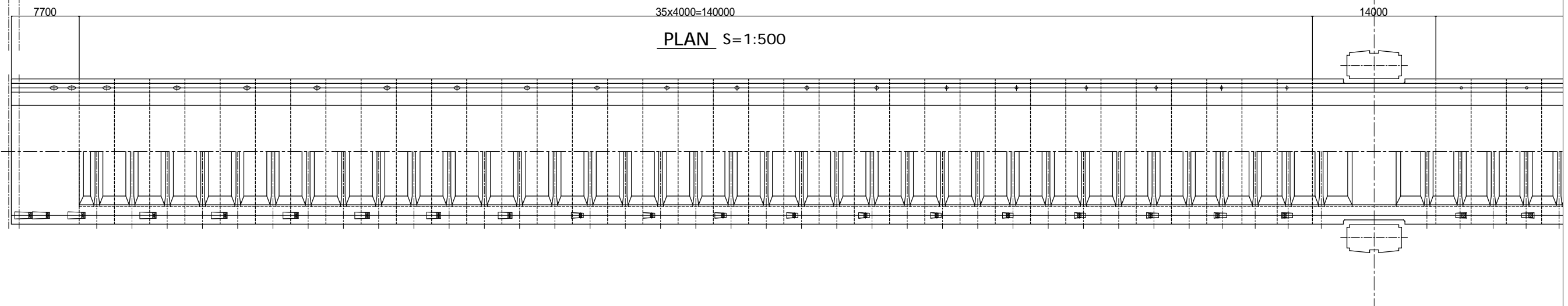


GENERAL VIEW OF GIRDER (1)

ELEVATION S=1:500

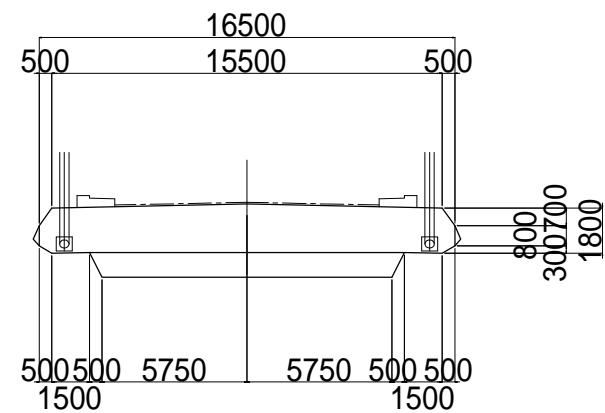


PLAN S=1:500

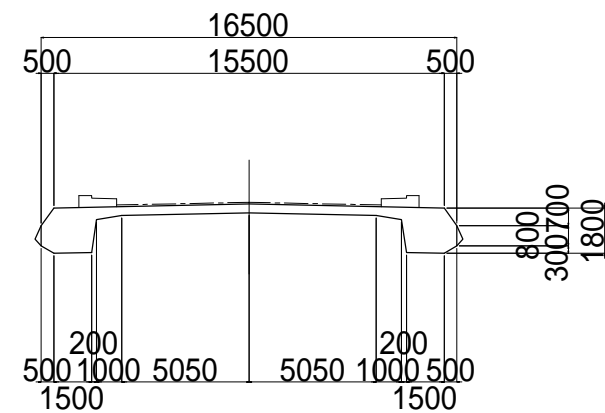


SECTION S=1:300

GIRDER END SECTION

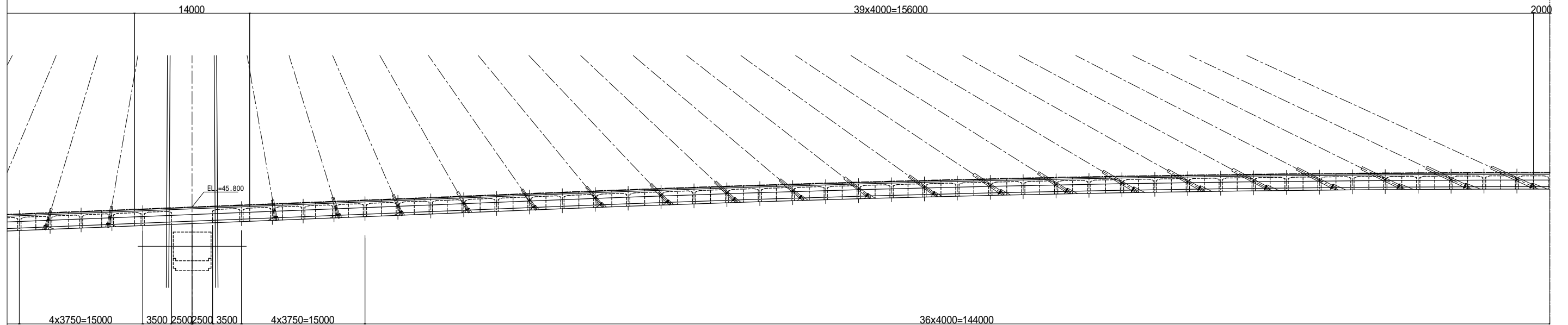


TYPICAL SECTION

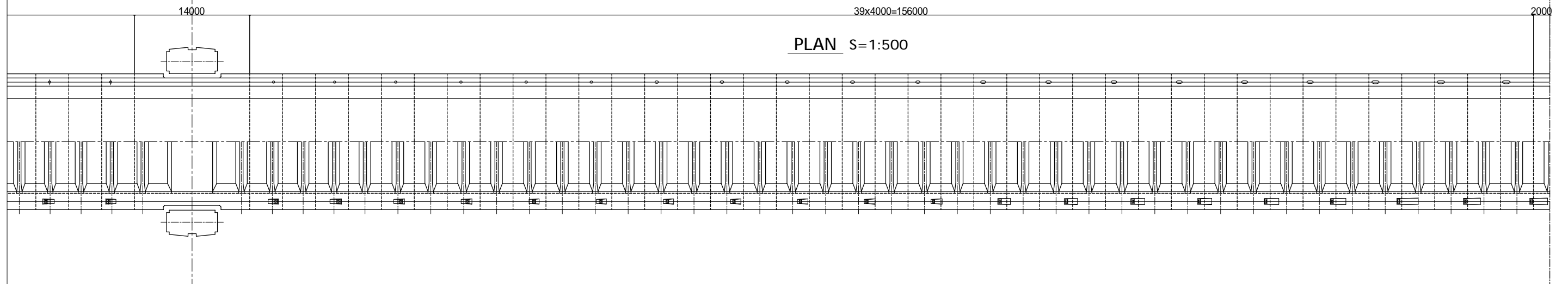


GENERAL VIEW OF GIRDER (2)

ELEVATION S=1:500

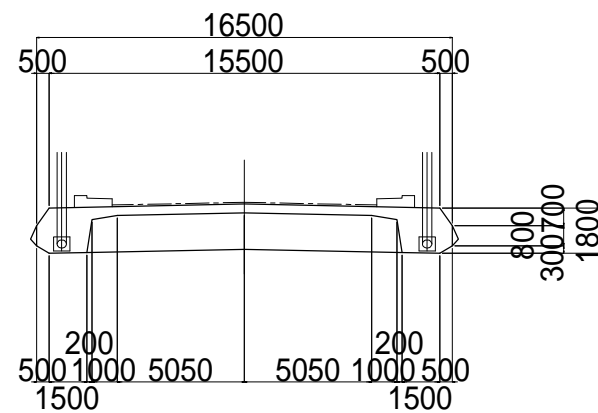


PLAN S=1:500

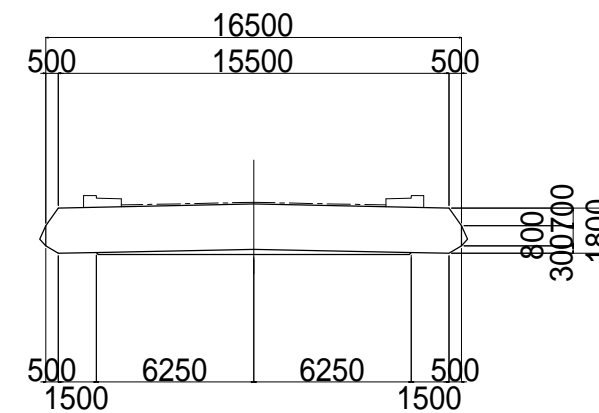


SECTION S=1:300

CROSSBEAM SECTION



SUPPORT SECTION



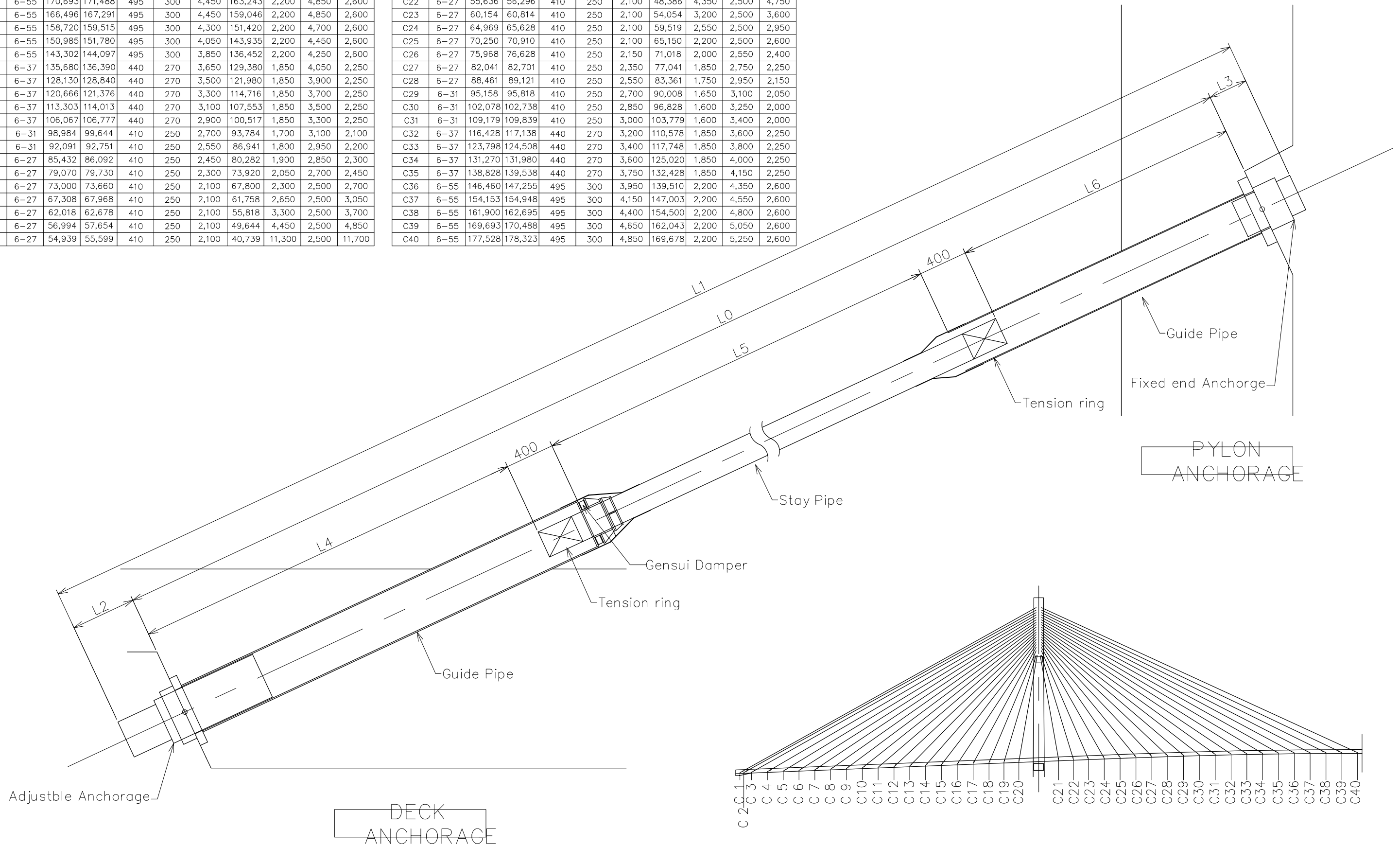
GENERAL VIEW OF STAY CABLE

(Unit : mm)

Cable No.	Anchorage Unit	Cable Length						Guide Pipe		
		L 0	L 1	L 2	L 3	L 4	L 5	L 6	Deck	Pylon
C 1	6-61	173,084	173,934	530	320	4,550	165,384	2,350	4,950	2,750
C 2	6-55	170,693	171,488	495	300	4,450	163,243	2,200	4,850	2,600
C 3	6-55	166,496	167,291	495	300	4,450	159,046	2,200	4,850	2,600
C 4	6-55	158,720	159,515	495	300	4,300	151,420	2,200	4,700	2,600
C 5	6-55	150,985	151,780	495	300	4,050	143,935	2,200	4,450	2,600
C 6	6-55	143,302	144,097	495	300	3,850	136,452	2,200	4,250	2,600
C 7	6-37	135,680	136,390	440	270	3,650	129,380	1,850	4,050	2,250
C 8	6-37	128,130	128,840	440	270	3,500	121,980	1,850	3,900	2,250
C 9	6-37	120,666	121,376	440	270	3,300	114,716	1,850	3,700	2,250
C10	6-37	113,303	114,013	440	270	3,100	107,553	1,850	3,500	2,250
C11	6-37	106,067	106,777	440	270	2,900	100,517	1,850	3,300	2,250
C12	6-31	98,984	99,644	410	250	2,700	93,784	1,700	3,100	2,100
C13	6-31	92,091	92,751	410	250	2,550	86,941	1,800	2,950	2,200
C14	6-27	85,432	86,092	410	250	2,450	80,282	1,900	2,850	2,300
C15	6-27	79,070	79,730	410	250	2,300	73,920	2,050	2,700	2,450
C16	6-27	73,000	73,660	410	250	2,100	67,800	2,300	2,500	2,700
C17	6-27	67,308	67,968	410	250	2,100	61,758	2,650	2,500	3,050
C18	6-27	62,018	62,678	410	250	2,100	55,818	3,300	2,500	3,700
C19	6-27	56,994	57,654	410	250	2,100	49,644	4,450	2,500	4,850
C20	6-27	54,939	55,599	410	250	2,100	40,739	11,300	2,500	11,700

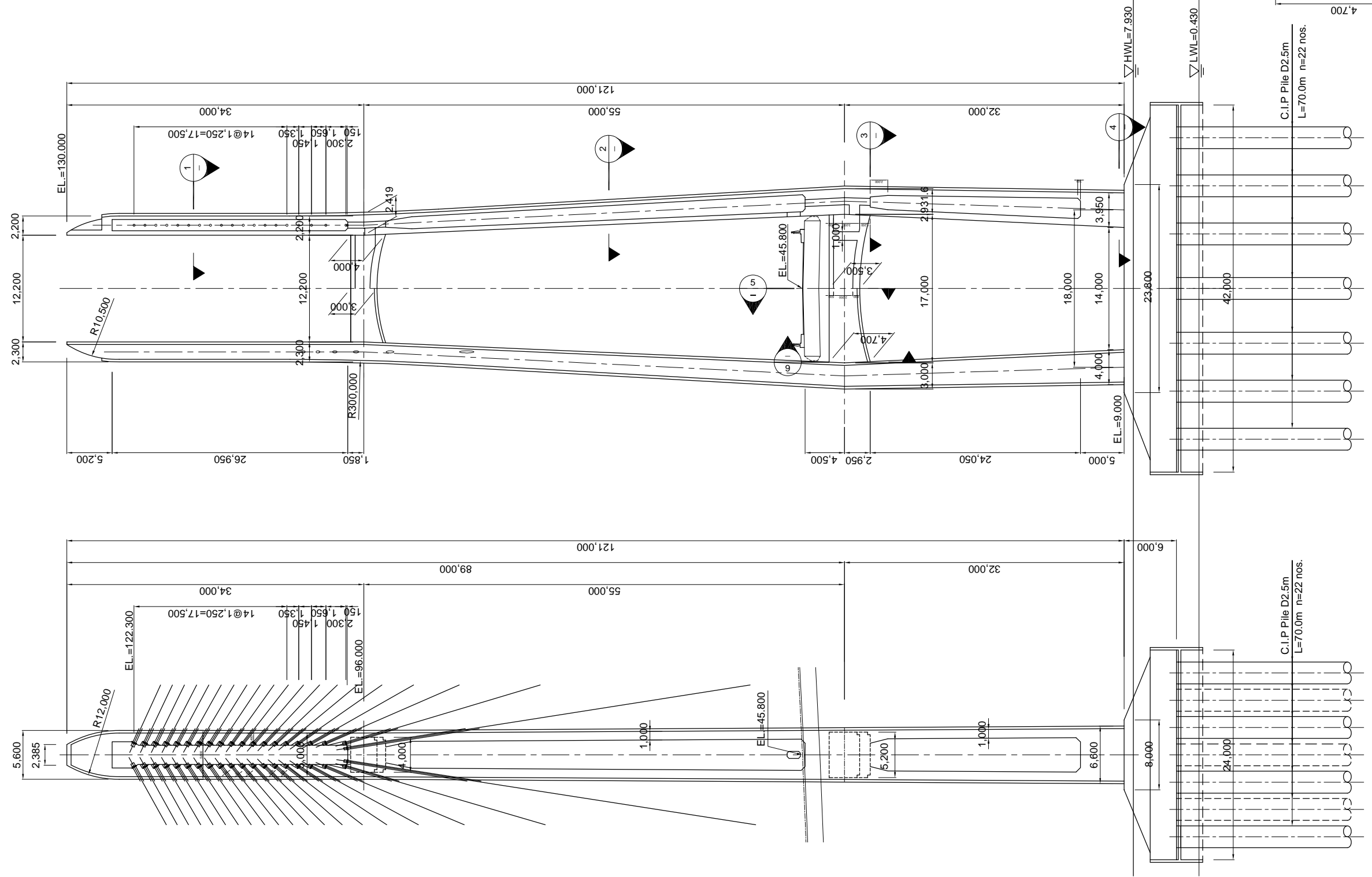
(Unit : mm)

Cable No.	Anchorage Unit	Cable Length						Guide Pipe		
		L 0	L 1	L 2	L 3	L 4	L 5	L 6	Deck	Pylon
C21	6-27	54,140	54,800	410	250	2,100	40,140	11,100	2,500	11,500
C22	6-27	55,636	56,296	410	250	2,100	48,386	4,350	2,500	4,750
C23	6-27	60,154	60,814	410	250	2,100	54,054	3,200	2,500	3,600
C24	6-27	64,969	65,628	410	250	2,100	59,519	2,550	2,500	2,950
C25	6-27	70,250	70,910	410	250	2,100	65,150	2,200	2,500	2,600
C26	6-27	75,968	76,628	410	250	2,150	71,018	2,000	2,550	2,400
C27	6-27	82,041	82,701	410	250	2,350	77,041	1,850	2,750	2,250
C28	6-27	88,461	89,121	410	250	2,550	83,361	1,750	2,950	2,150
C29	6-31	95,158	95,818	410	250	2,700	90,008	1,650	3,100	2,050
C30	6-31	102,078	102,738	410	250	2,850	96,828	1,600	3,250	2,000
C31	6-31	109,179	109,839	410	250	3,000	103,779	1,600	3,400	2,000
C32	6-37	116,428	117,138	440	270	3,200	110,578	1,850	3,600	2,250
C33	6-37	123,798	124,508	440	270	3,400	117,748	1,850	3,800	2,250
C34	6-37	131,270	131,980	440	270	3,600	125,020	1,850	4,000	2,250
C35	6-37	138,828	139,538	440	270	3,750	132,428	1,850	4,150	2,250
C36	6-55	146,460	147,255	495	300	3,950	139,510	2,200	4,350	2,600
C37	6-55	154,153	154,948	495	300	4,150	147,003	2,200	4,550	2,600
C38	6-55	161,900	162,695	495	300	4,400	154,500	2,200	4,800	2,600
C39	6-55	169,693	170,488	495	300	4,650	162,043	2,200	5,050	2,600
C40	6-55	177,528	178,323	495	300	4,850	169,678	2,200	5,250	2,600



GENERAL VIEW OF PYLON (1)

PYLON
S=1:500



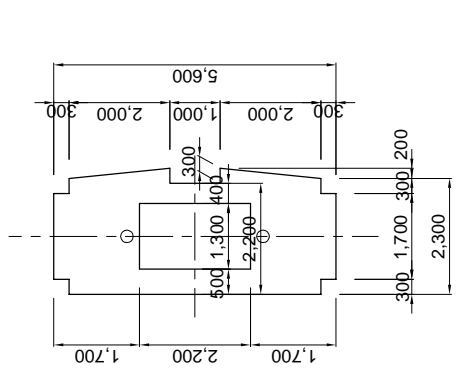
MINISTRY OF PUBLIC WORKS
AND TRANSPORT (MPWT)

THE PROJECT FOR CONSTRUCTION OF NEAK LOEUNG BRIDGE
IN THE KINGDOM OF CAMBODIA

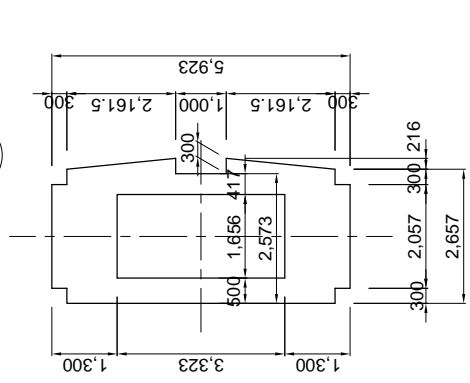
JAPAN INTERNATIONAL
COOPERATION AGENCY (JICA)

TITLE
GENERAL VIEW OF PYLON (1)

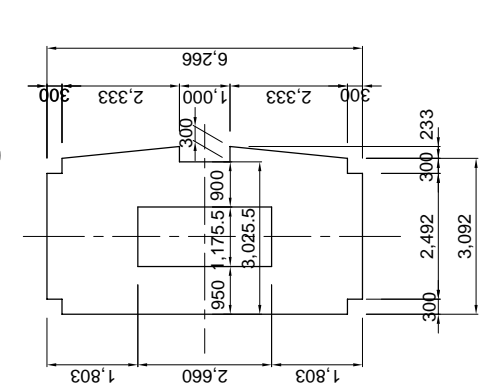
SCALE	DATE	DRAWING NO.
-	June/09	000



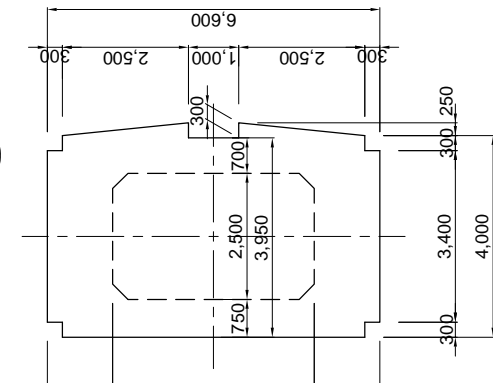
SECTION 1
1:150



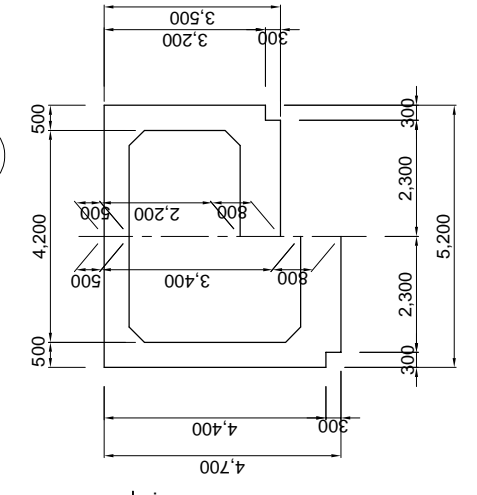
SECTION 2
1:150



SECTION 3
1:150



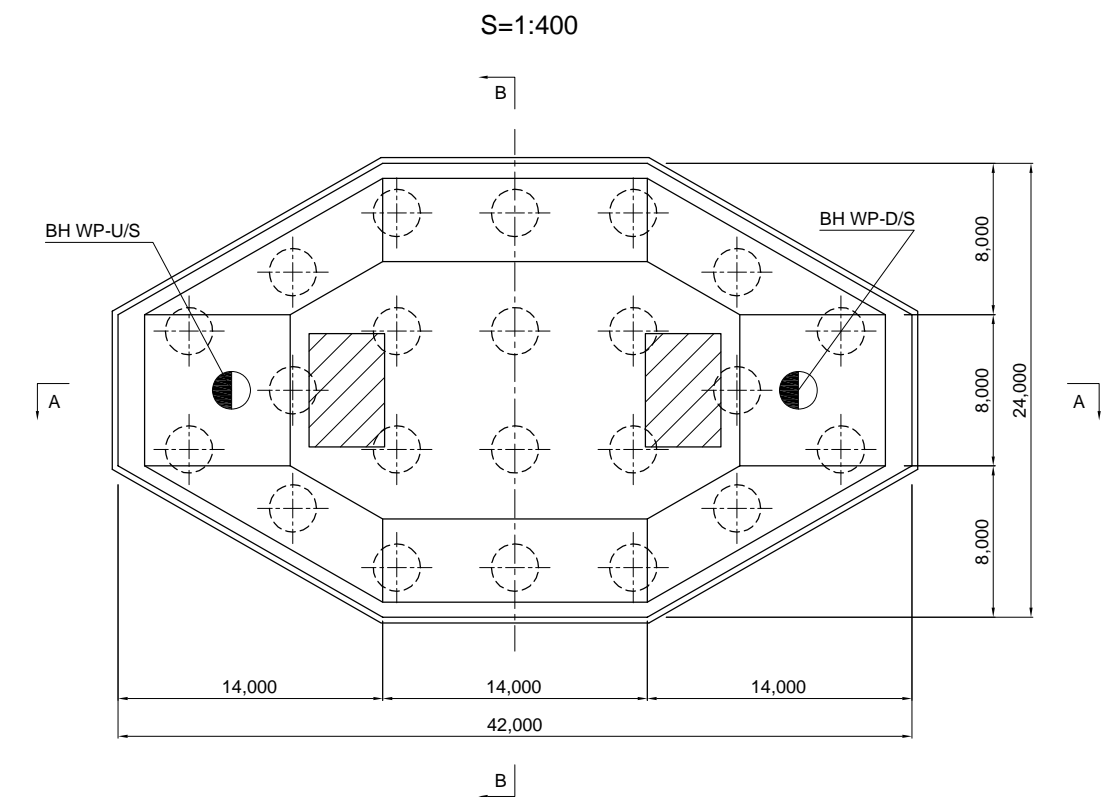
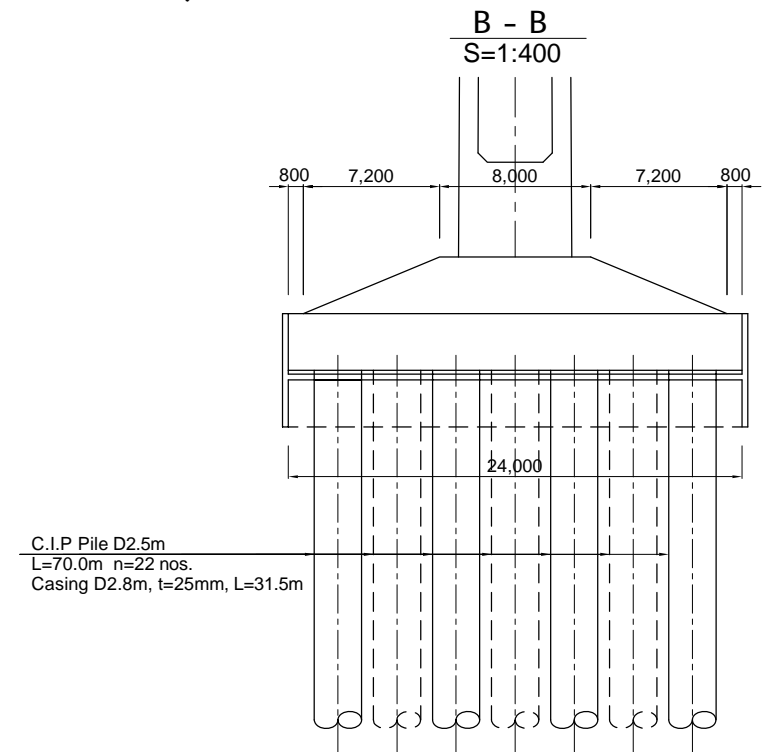
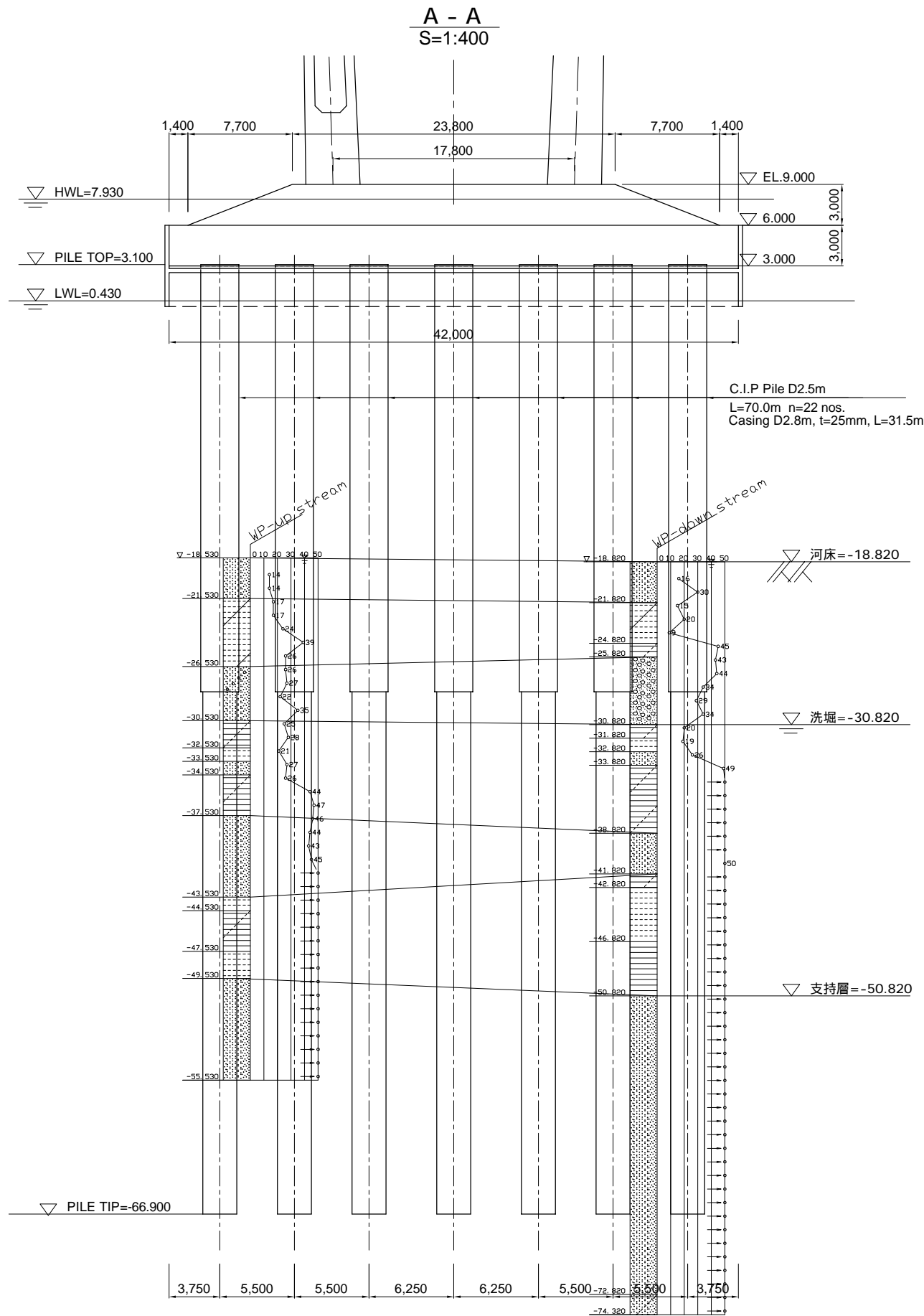
SECTION 4
1:150



SECTION 5
1:150

SECTION 6
1:150

GENERAL VIEW OF FOUNDATION (WEST PYLON)

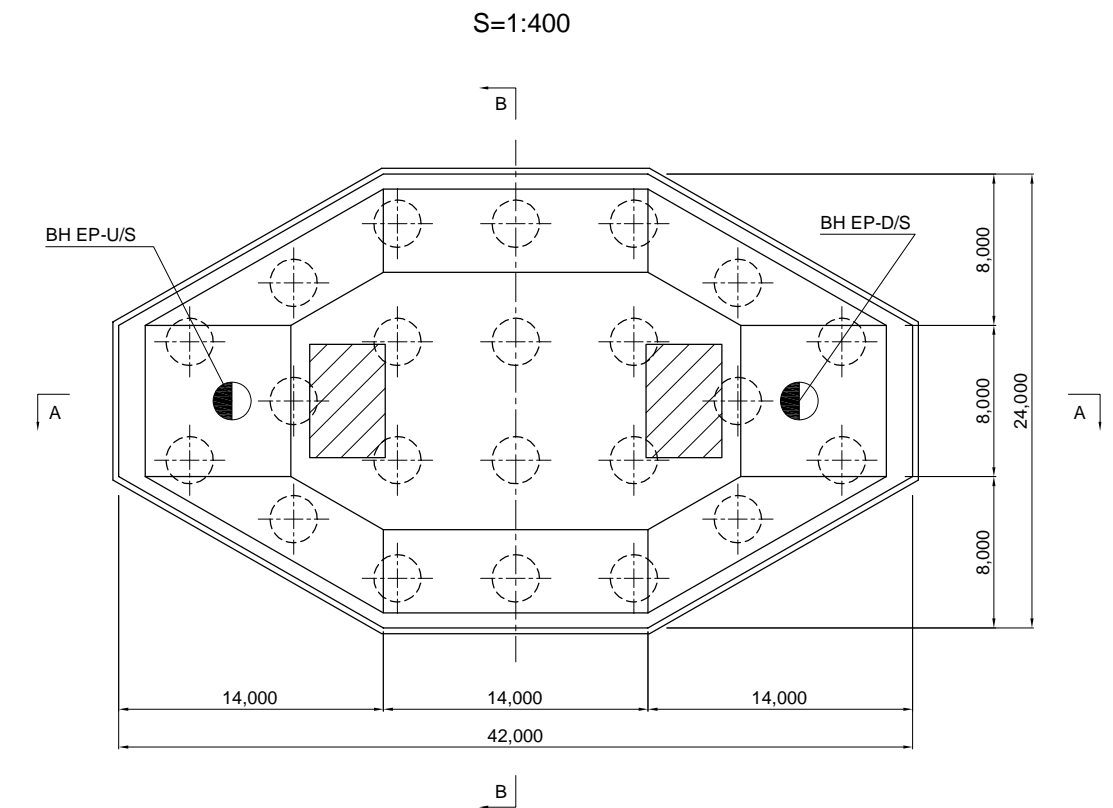
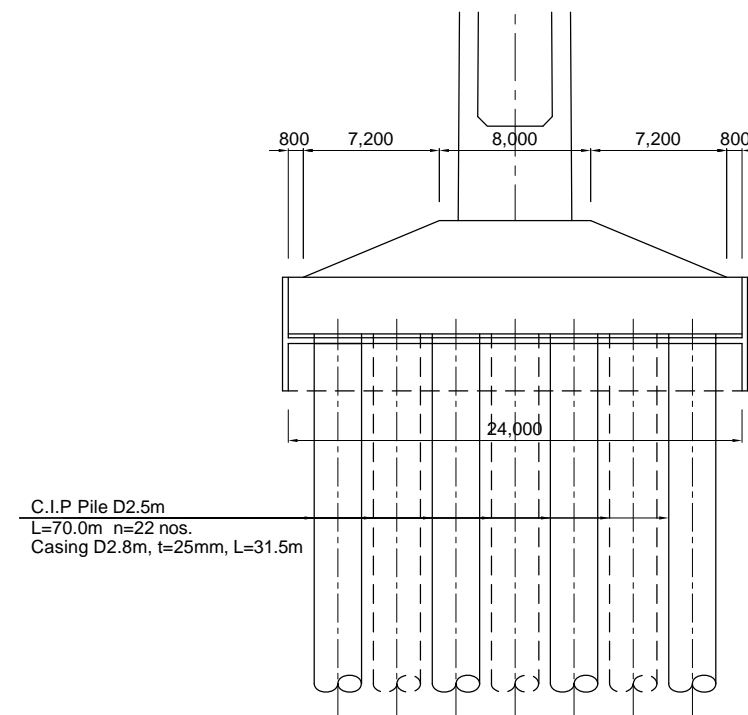
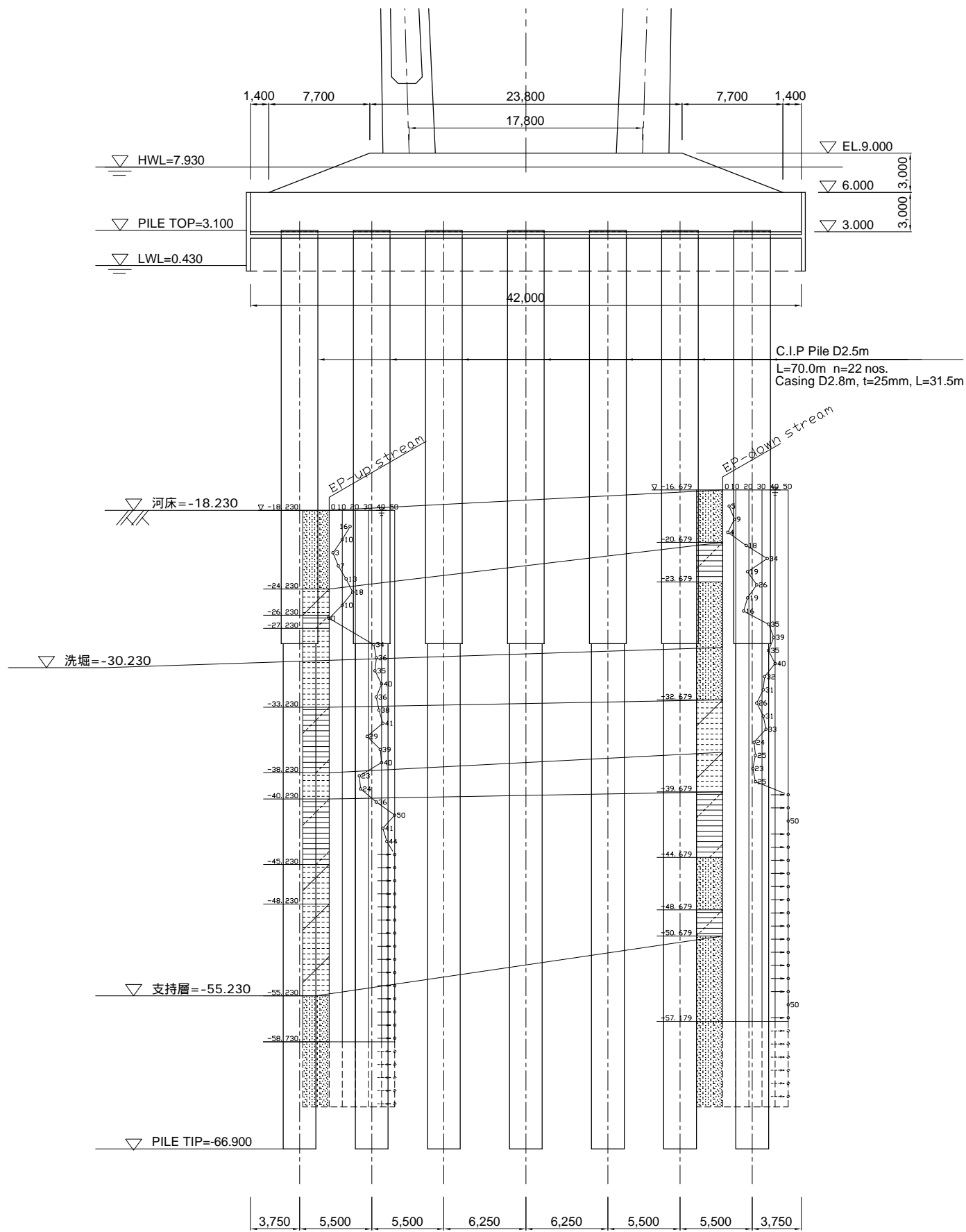


MINISTRY OF PUBLIC WORKS AND TRANSPORT (MPWT)	THE PROJECT FOR CONSTRUCTION OF NEAK LOEUNG BRIDGE IN THE KINGDOM OF CAMBODIA	JAPAN INTERNATIONAL COOPERATION AGENCY (JICA)	TITLE	SCALE	DATE	DRAWING NO.
			GENERAL VIEW OF FOUNDATION (WEST PYLON)	-	May/09	000

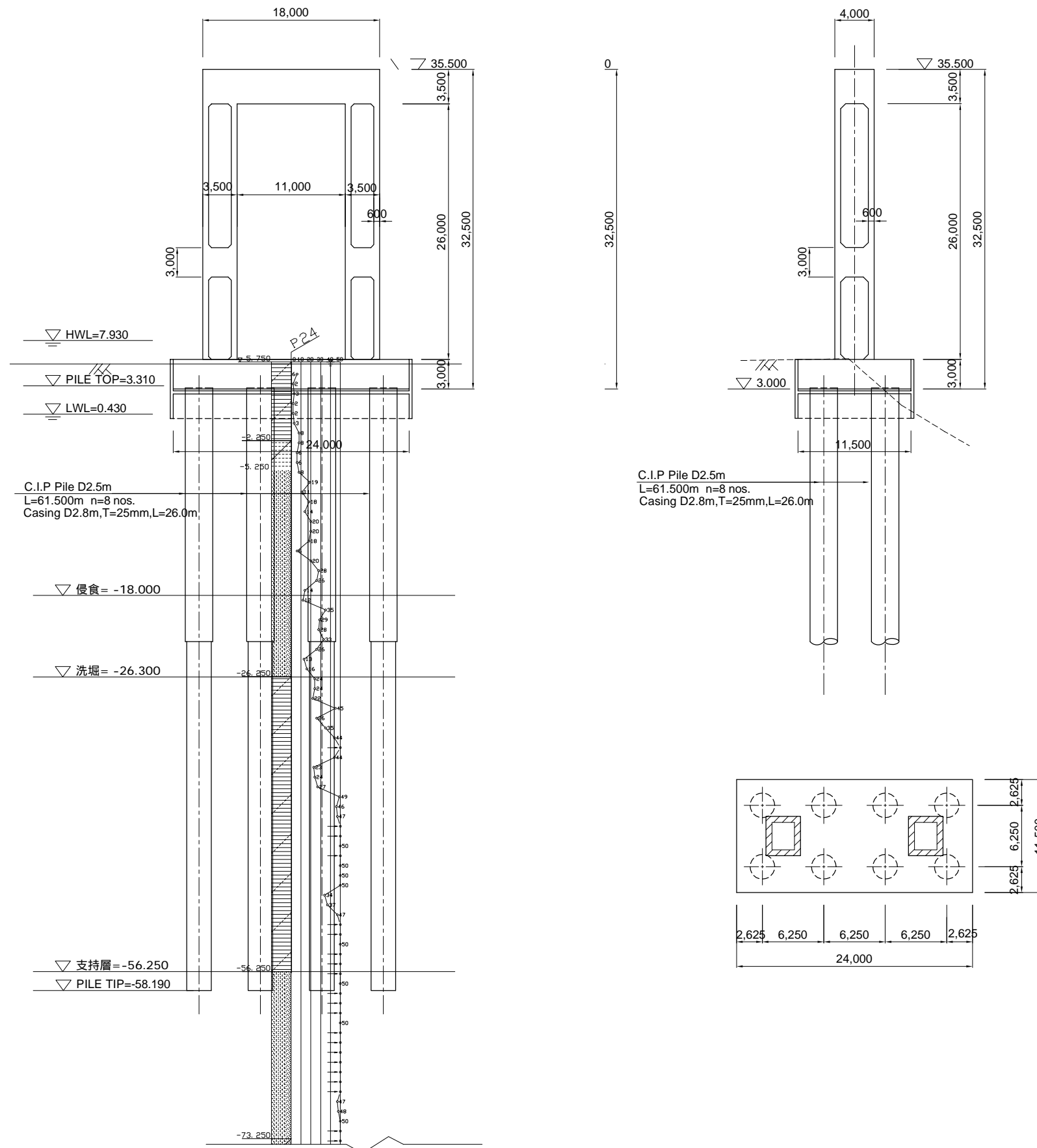
GENERAL VIEW OF FOUNDATION (EAST PYLON)

A - A
S=1:400

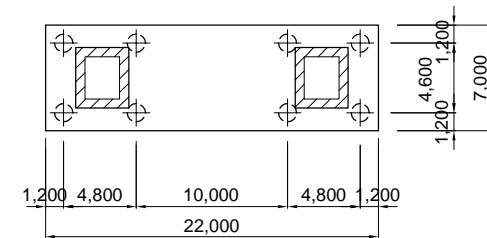
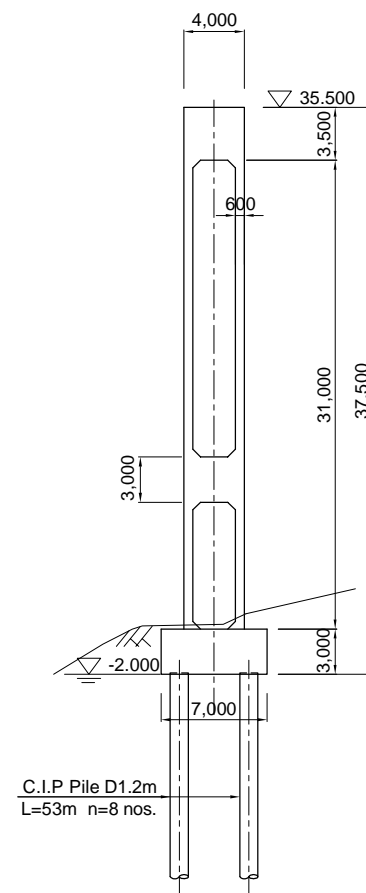
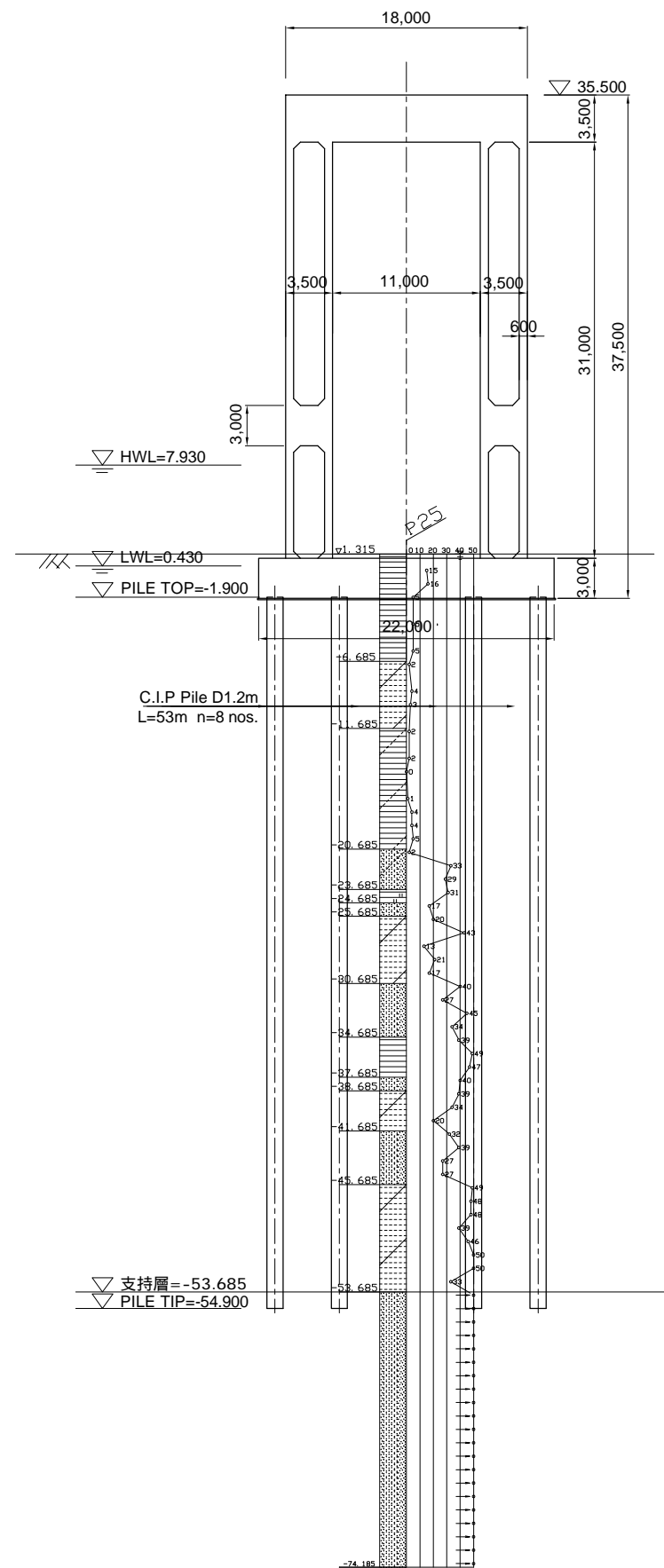
B - B
S=1:400



GENERAL VIEW OF SUBSTRUCTURE AND FOUNDATION (P20) S=1:500

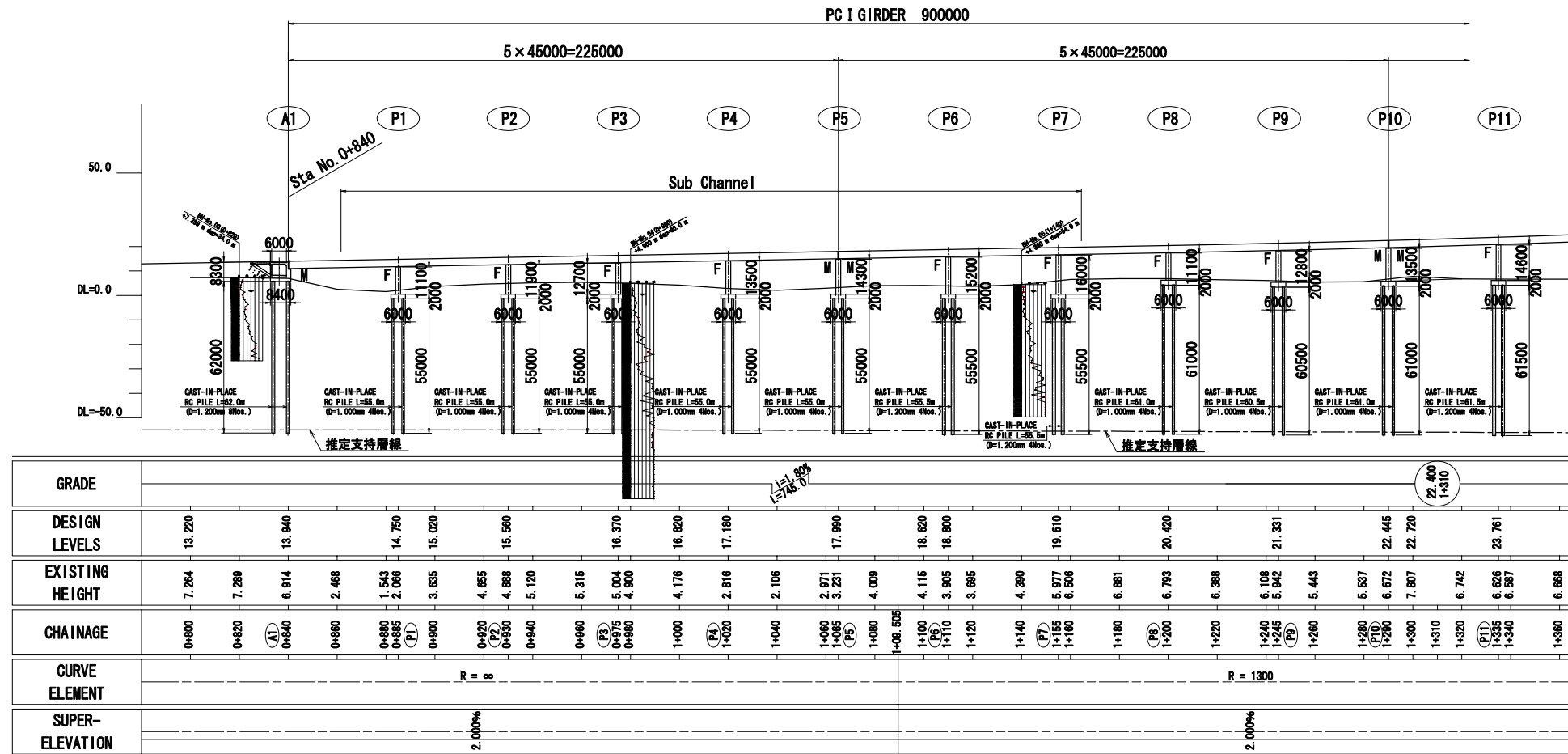


GENERAL VIEW OF SUBSTRUCTURE AND FOUNDATION (P21) S=1:500

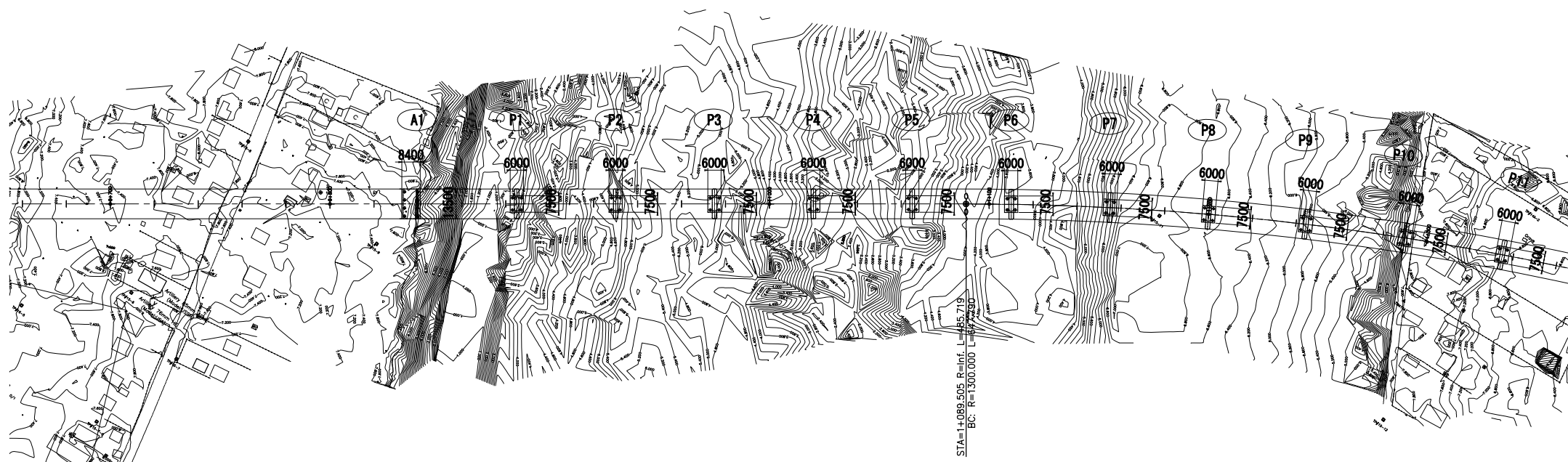


PLAN AND PROFILE OF APPROACH BRIDGE(A1 to P10) [Temporary July 2009]

PROFILE S=1:2,500



PLAN S=1:2,500



PLAN AND PROFILE OF APPROACH BRIDGE(P10 to P20) [Temporary July 2009]

PROFILE S=1:2,500

