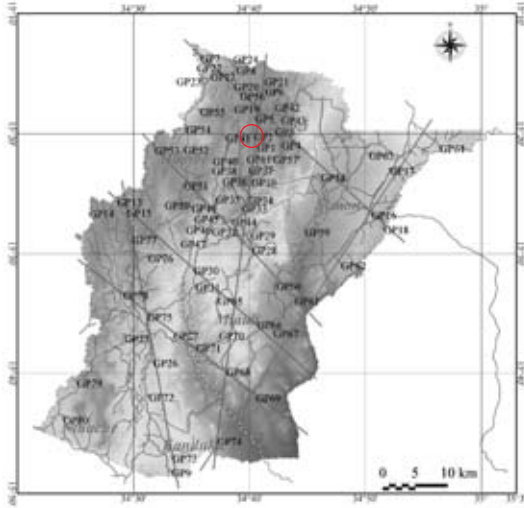


No: GP41

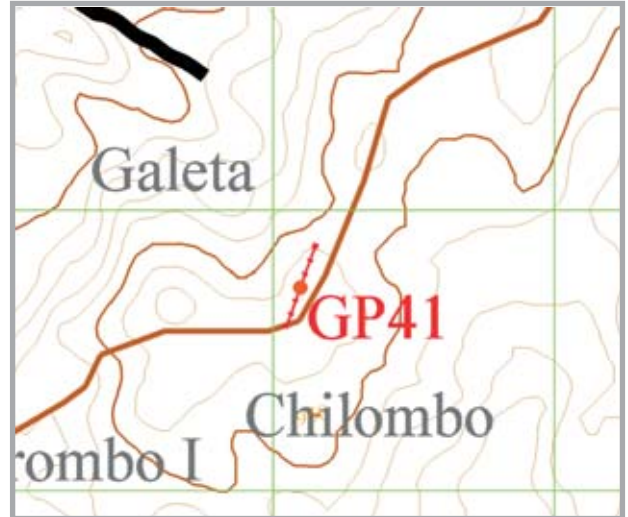
District: Neno

Village: Galeta

POS(UTM36) N8,303,728m ,E679,097m, Elevation=960m



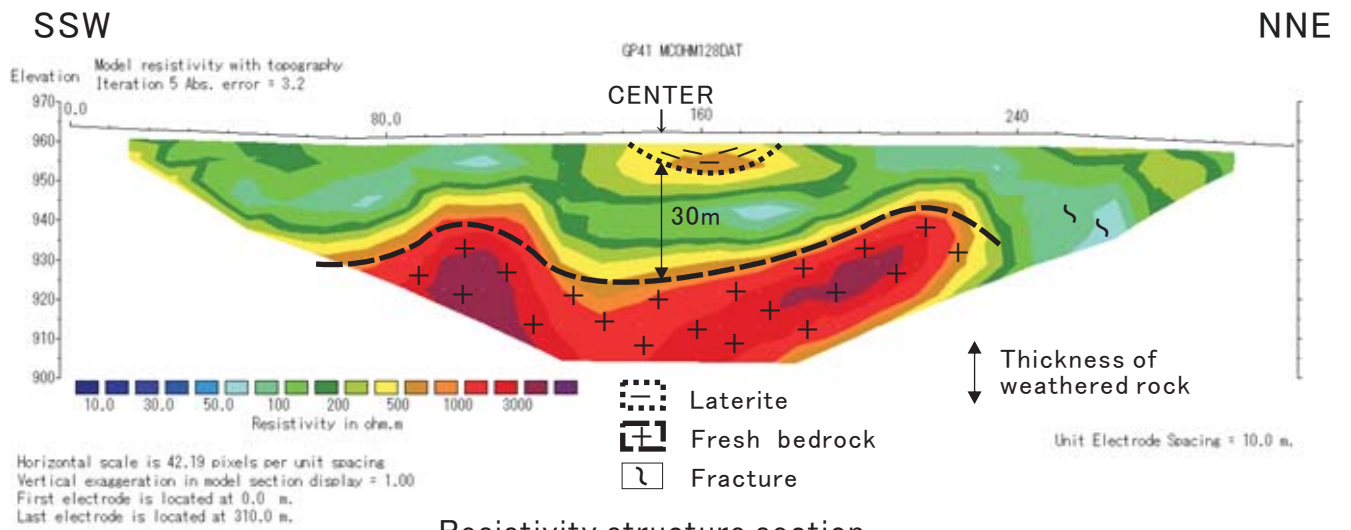
Index map



Location map



Scene of field site



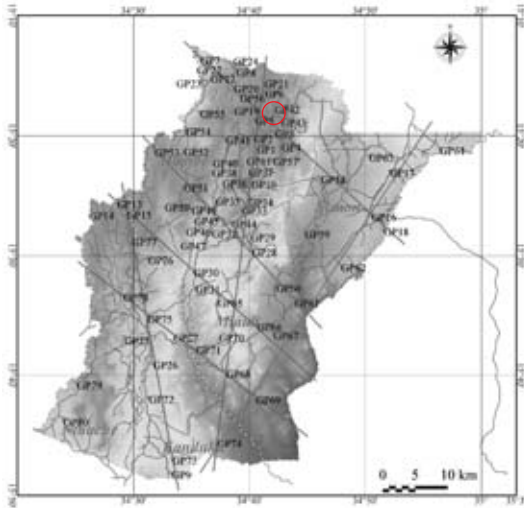
Resistivity structure section

No: GP42

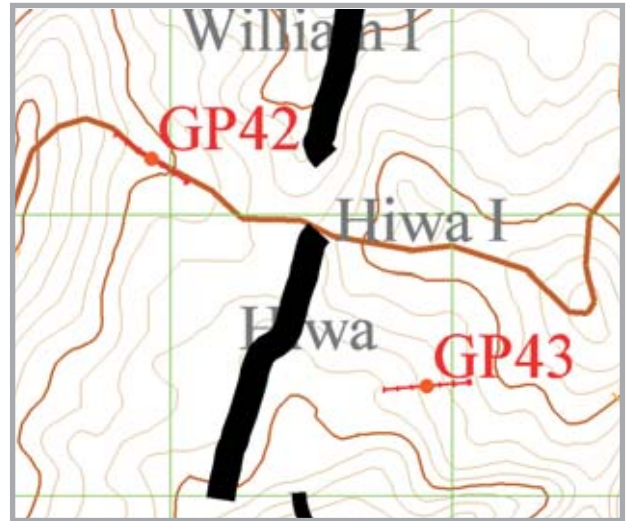
District: Neno

Village: Watchoka

POS(UTM36) N8,307,203m ,E682,932m, Elevation=1,003m



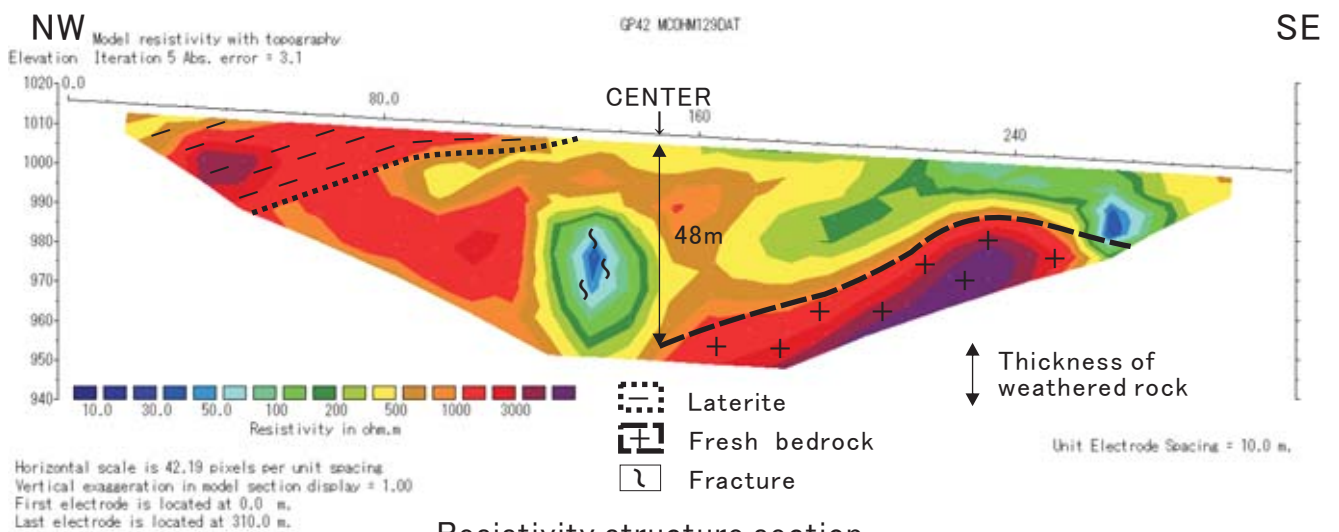
Index map



Location map



Scene of field site



Resistivity structure section

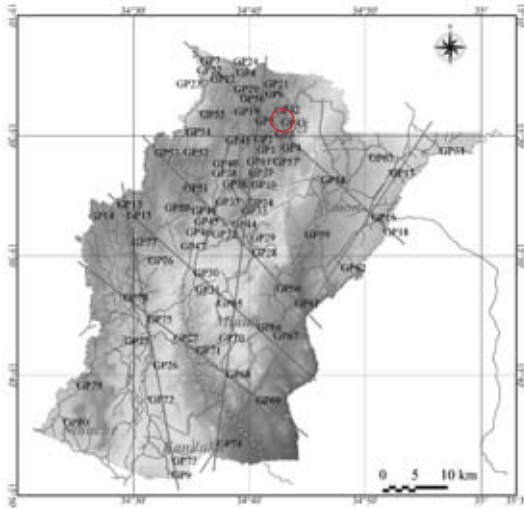


No: GP43

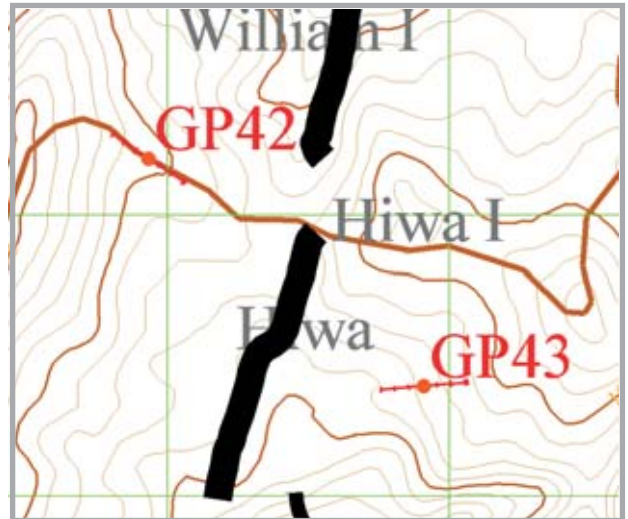
District: Neno

Village: Hiwa III

POS(UTM36) N8,306,392m ,E683,911m, Elevation=978m



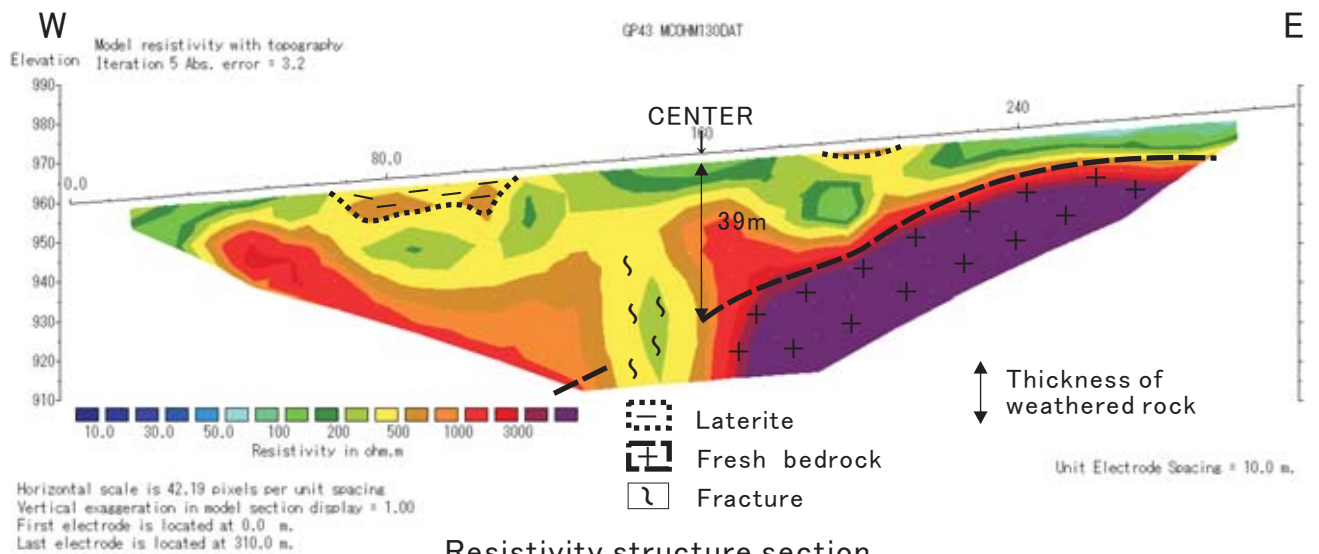
Index map



Location map



Scene of field site



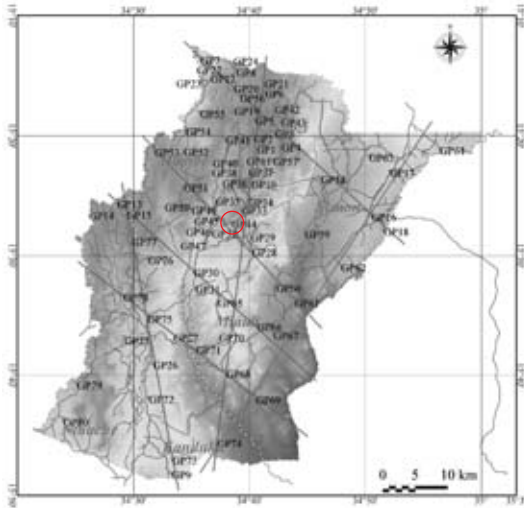
Resistivity structure section

No: GP44

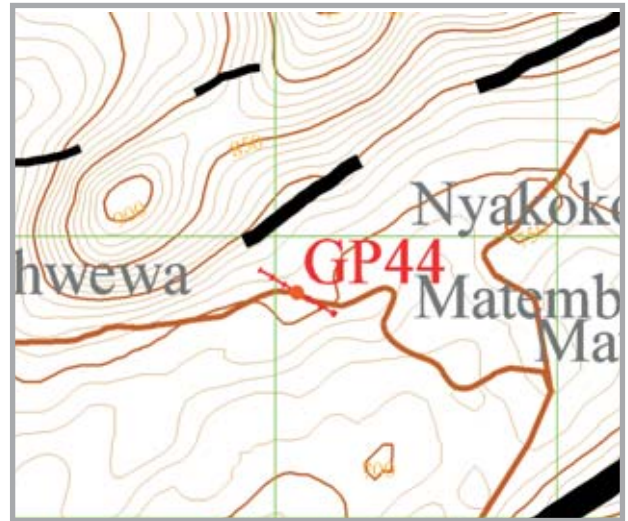
District: Neno

Village: Matemba

POS(UTM36) N8,290,806m ,E676,076m ,Elevation=750m



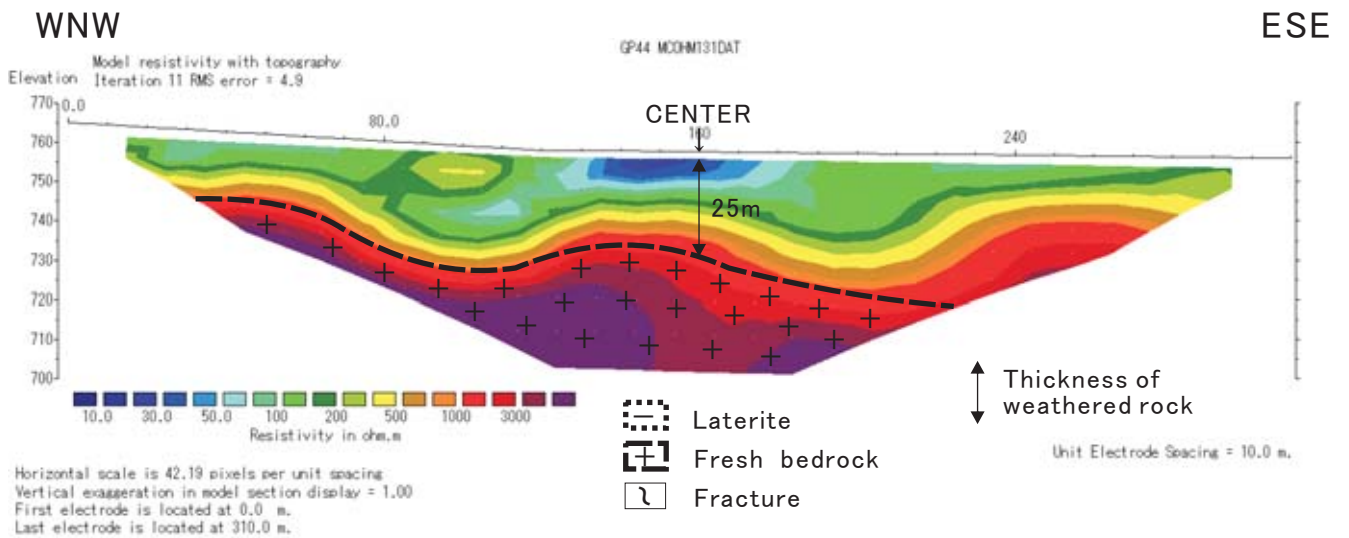
Index map



Location map



Scene of field site



Resistivity structure section

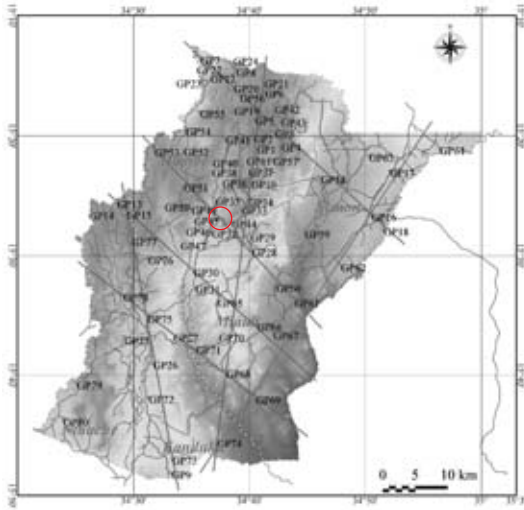


No: GP45

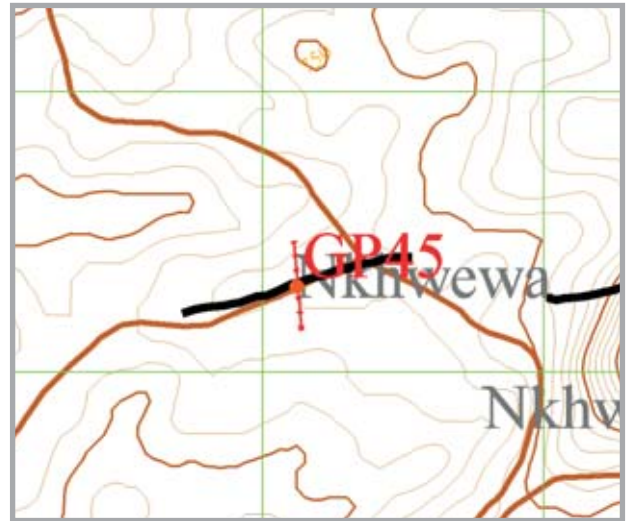
District: Neno

Village: Nkhwewa

POS(UTM36) N8,291,308m ,E674,123m, Elevation=732m



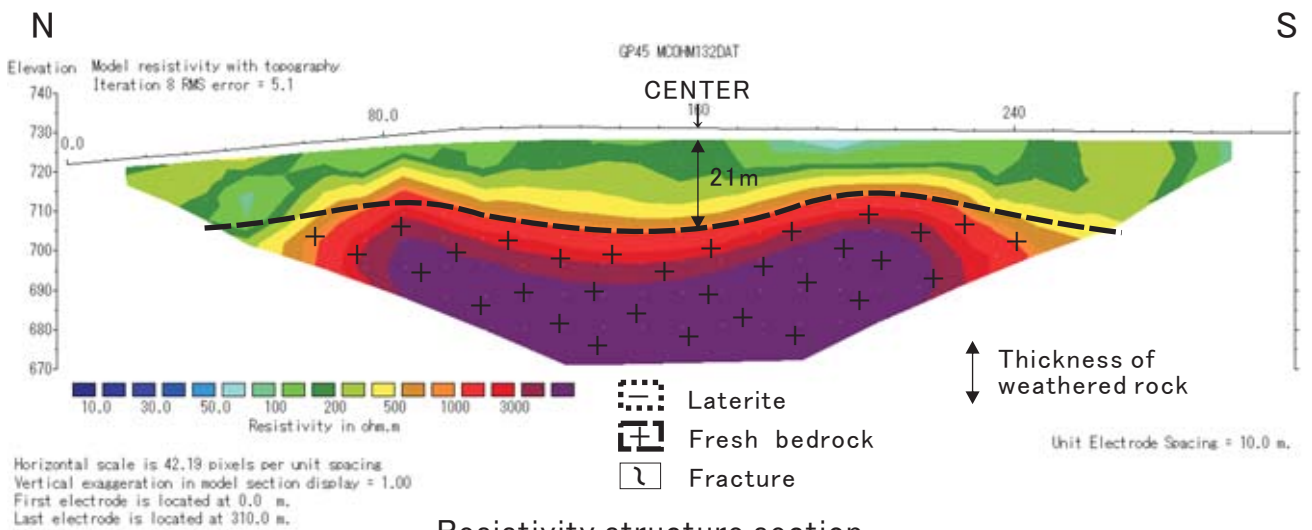
Index map



Location map



Scene of field site



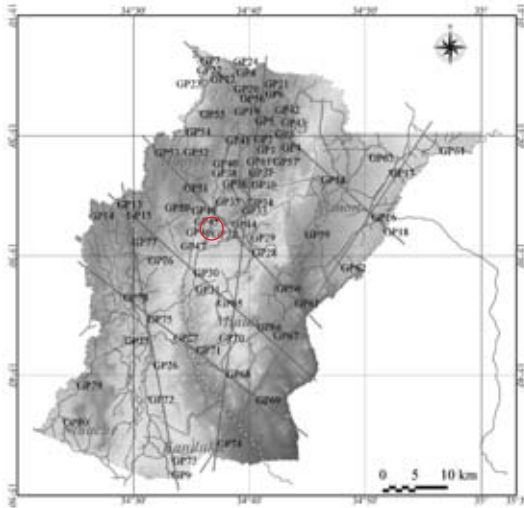
Resistivity structure section

No: GP46

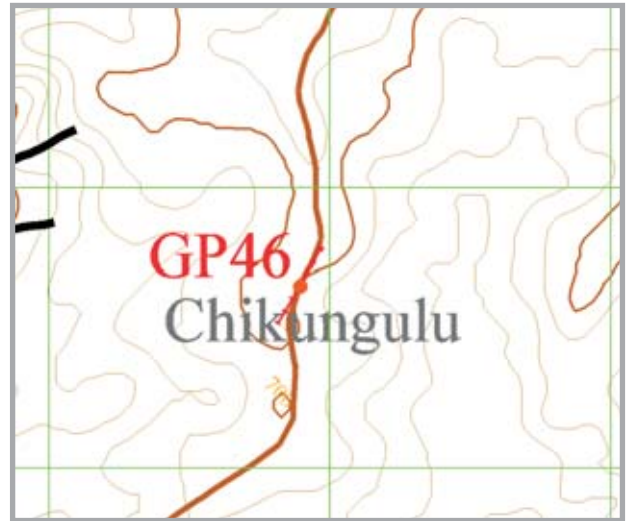
District: Neno

Village: Chikungula

POS(UTM36) N8,289,651m ,E672,896m, Elevation=700m



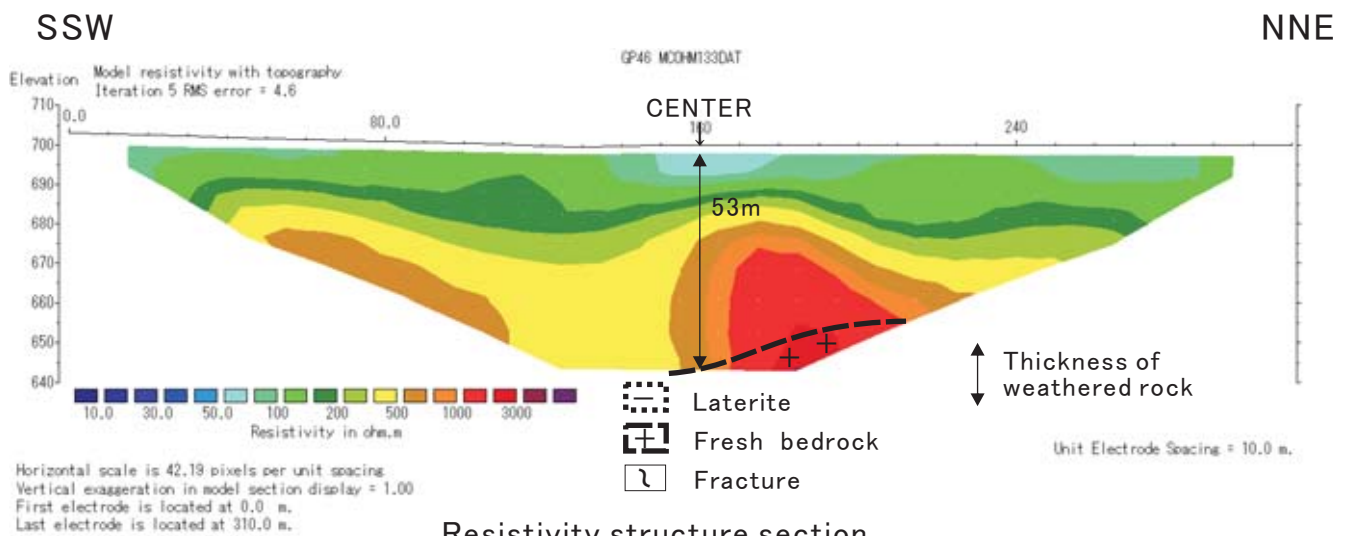
Index map



Location map



Scene of field site



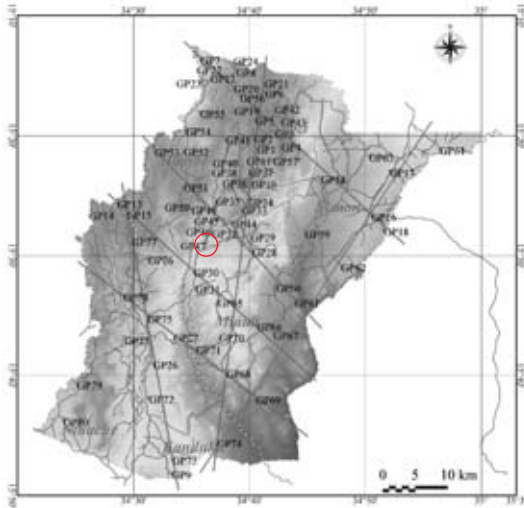
Resistivity structure section

No: GP47

District: Neno

Village: Chimpazi

POS(UTM36) N8,287,502m ,E672,034m ,Elevation=628m



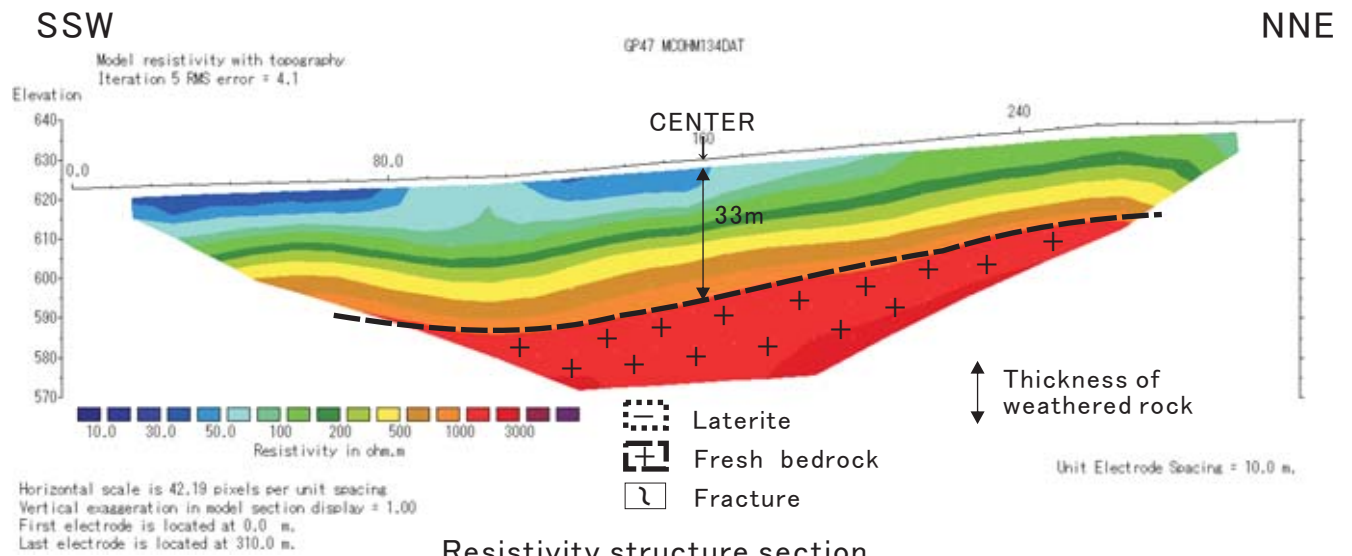
Index map



Location map



Scene of field site



Resistivity structure section

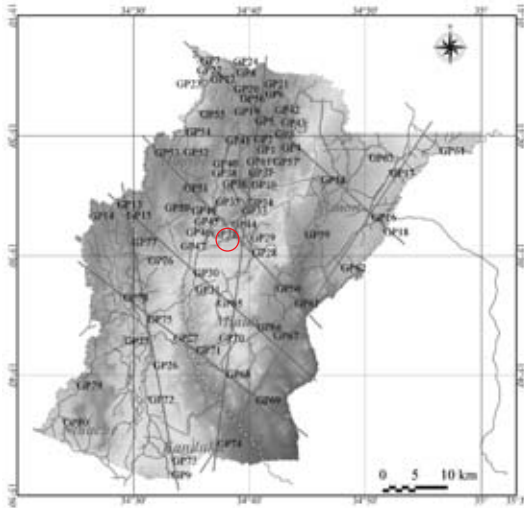


No: GP48

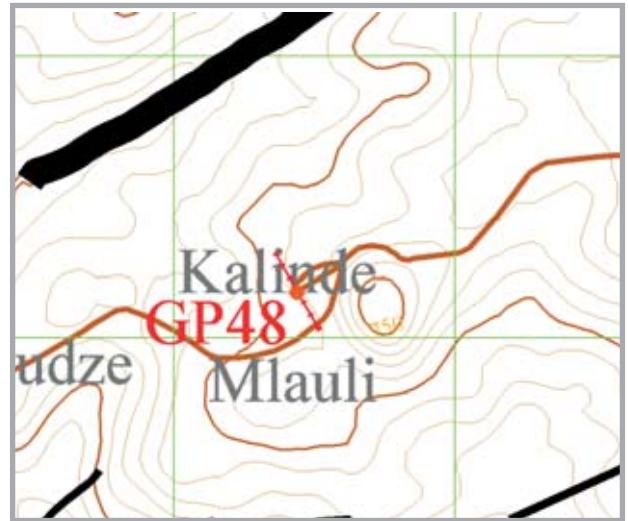
District: Neno

Village: Kalinde

POS(UTM36) N8,288,162m ,E675,438m, Elevation=695m



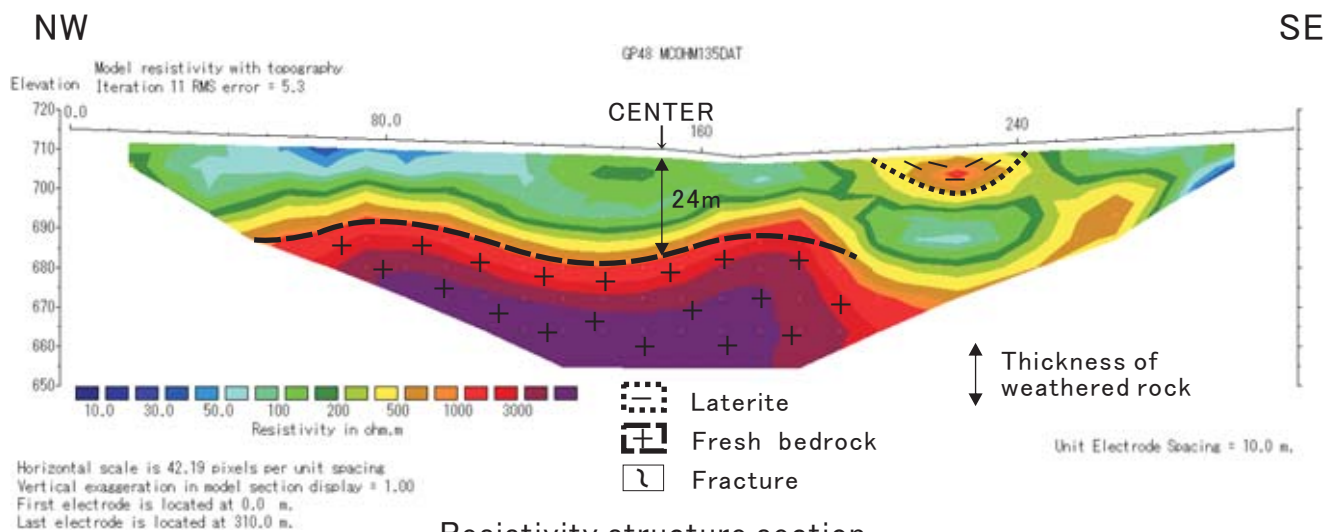
Index map



Location map



Scene of field site



Resistivity structure section

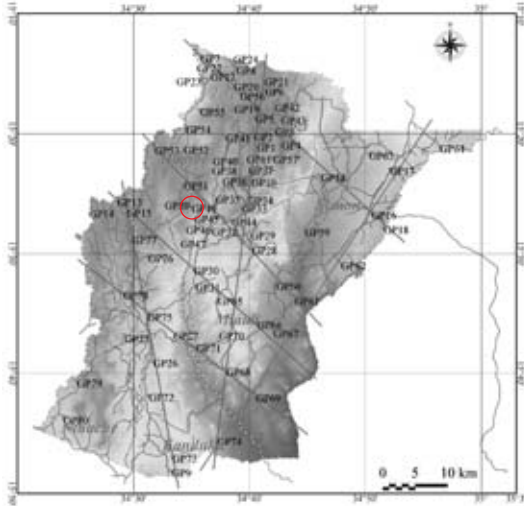


No: GP49

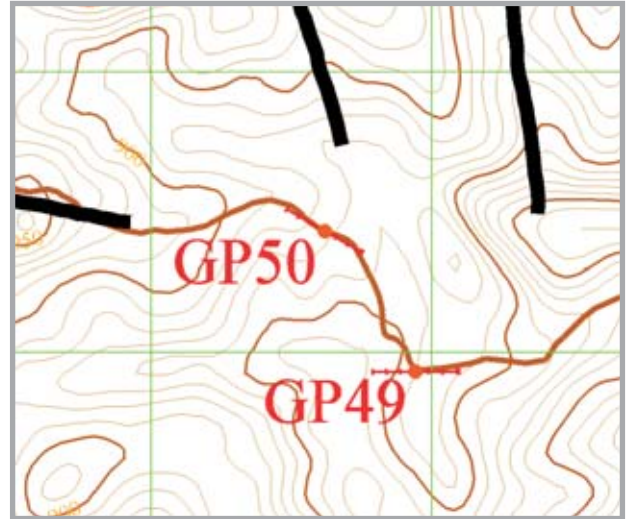
District: Neno

Village: Chikalima

POS(UTM36) N8,292,933m ,E669,941m, Elevation=851m



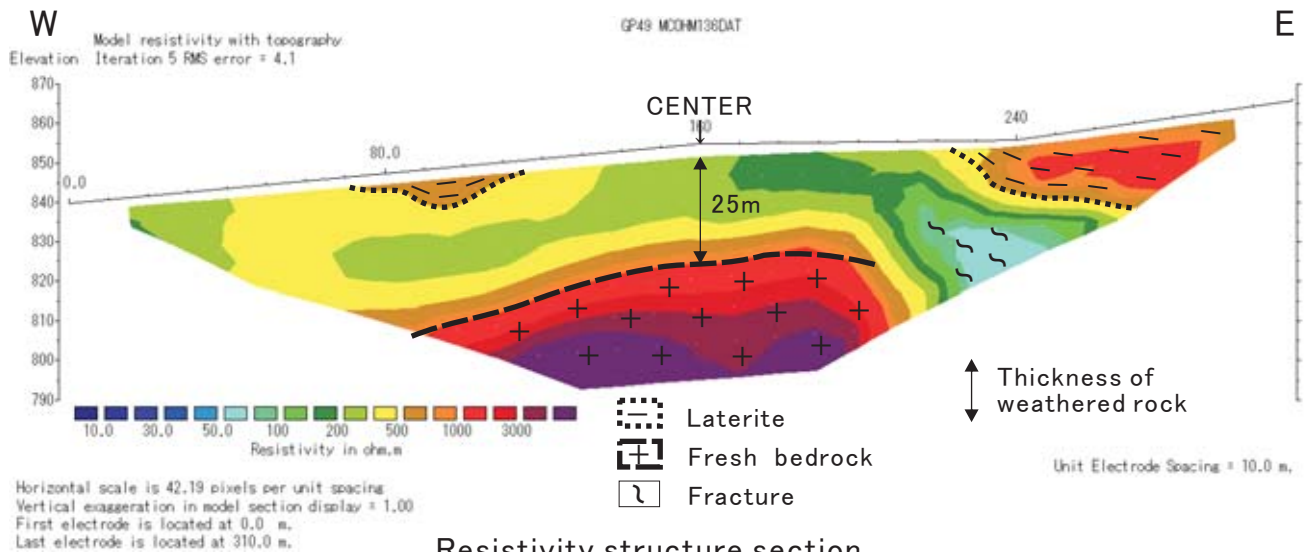
Index map



Location map



Scene of field site



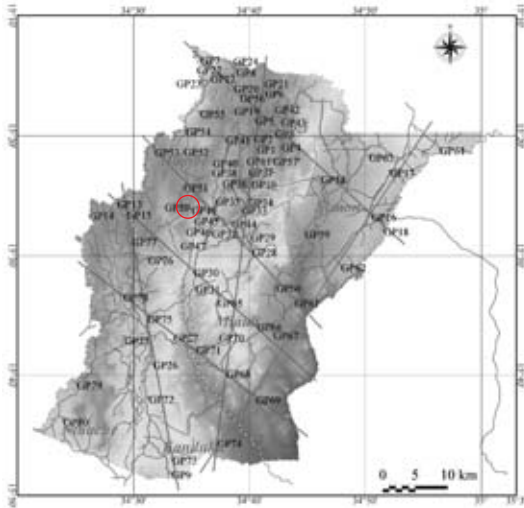
Resistivity structure section

No: GP50

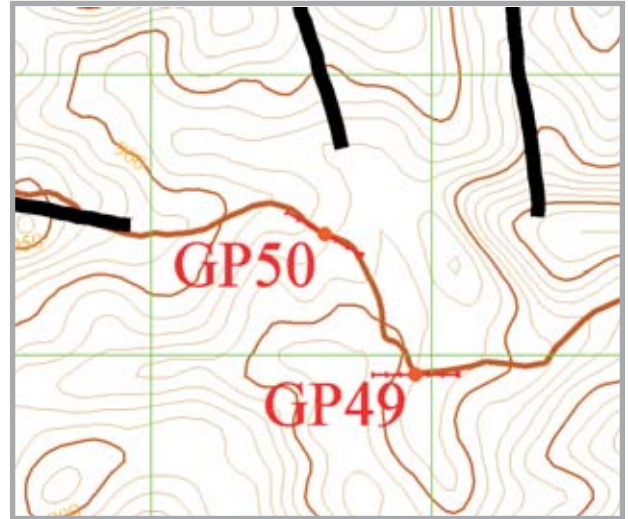
District: Neno

Village: Chikalima

POS(UTM36) N8,293,431m ,E669,619m, Elevation=871m



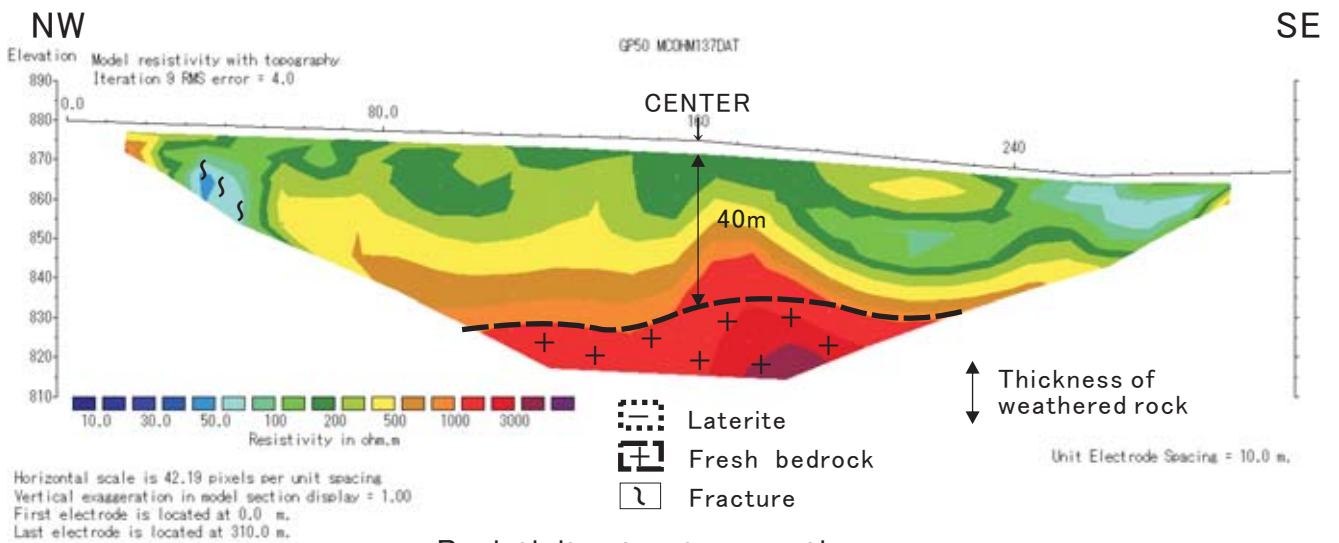
Index map



Location map



Scene of field site



Resistivity structure section

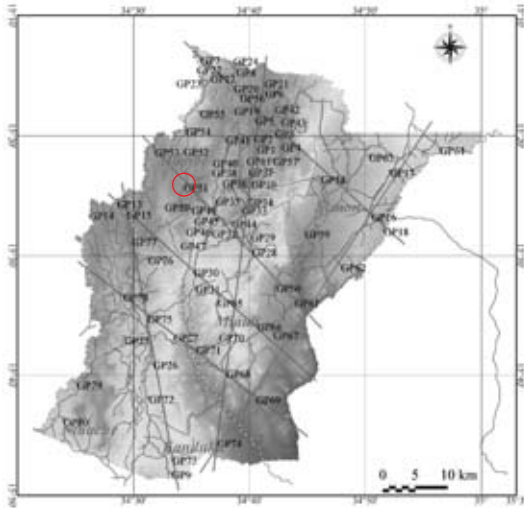


No: GP51

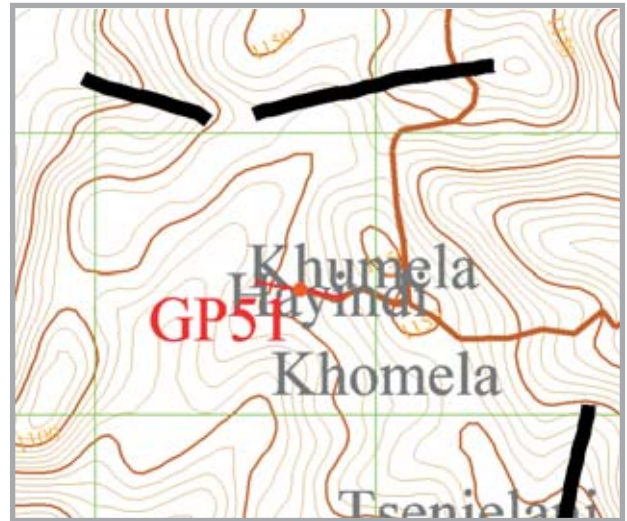
District: Neno

Village: Chakhumbira

POS(UTM36) N8,296,447m ,E668,731m, Elevation=1,098m



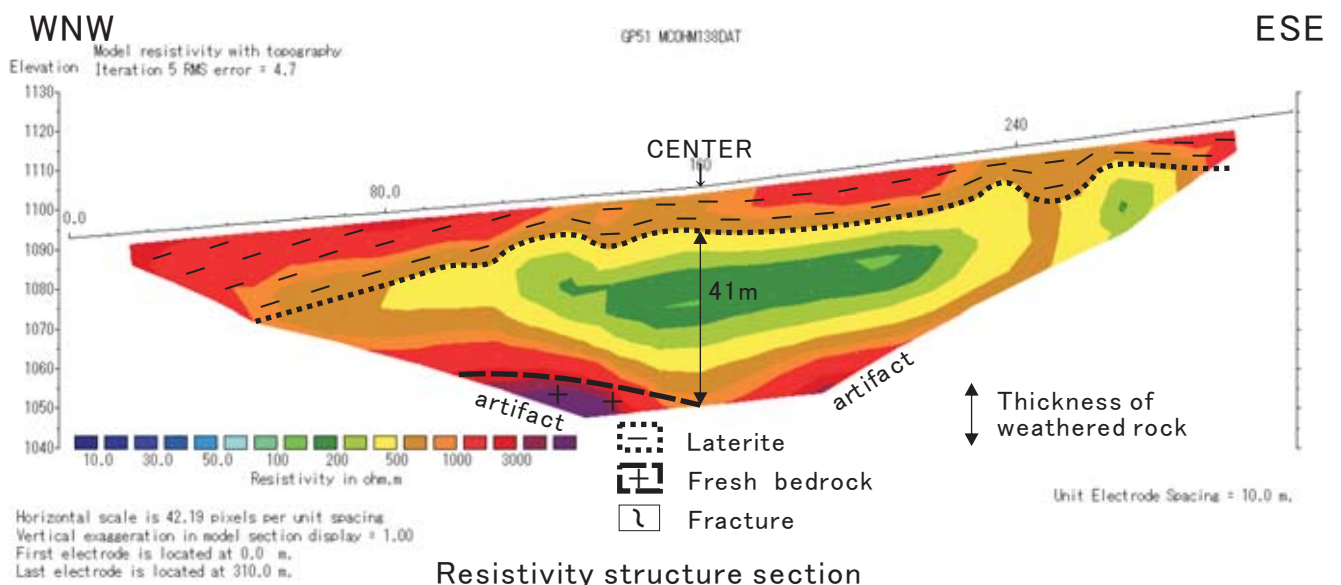
Index map



Location map



Scene of field site

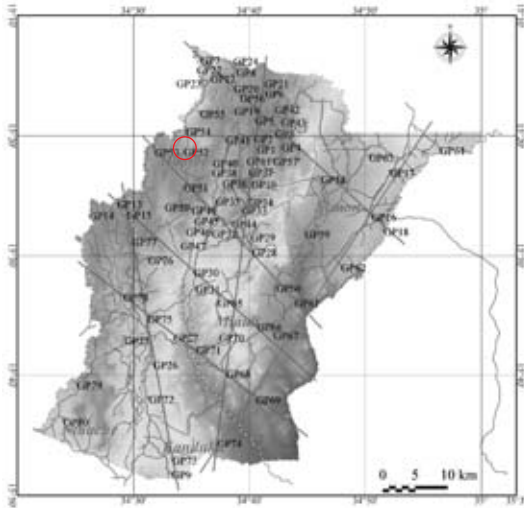


No: GP52

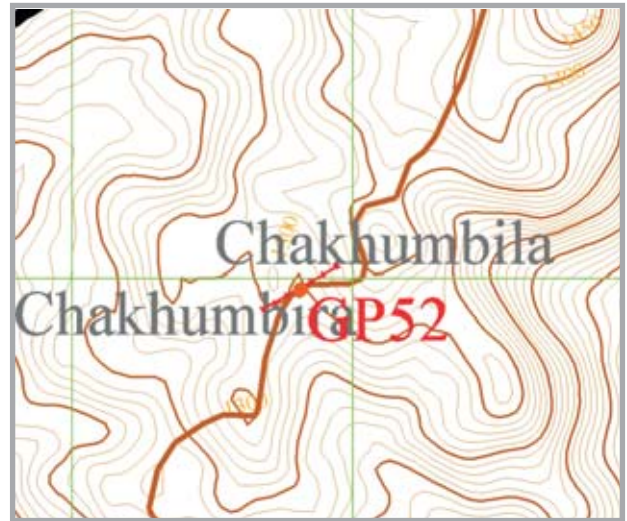
District: Neno

Village: Chakhumbira

POS(UTM36) N8,301,961m ,E668,813m ,Elevation=1,302m



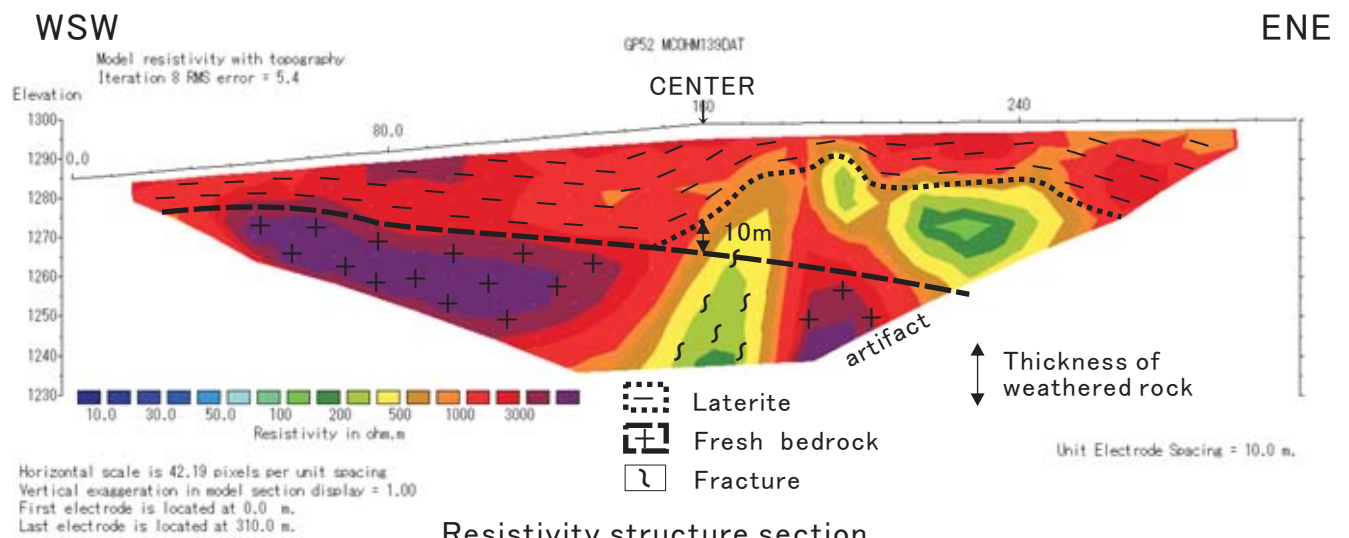
Index map



Location map



Scene of field site



Resistivity structure section

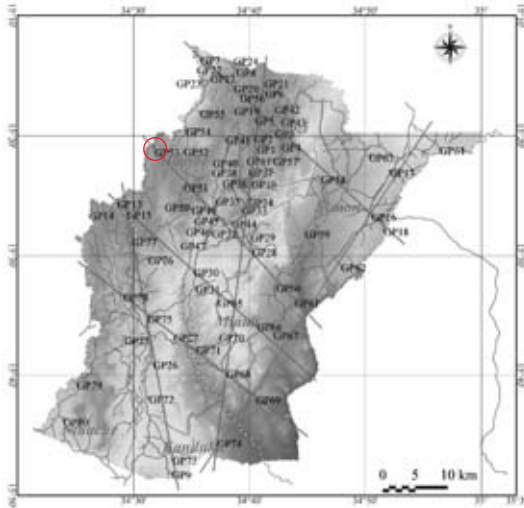


No: GP53

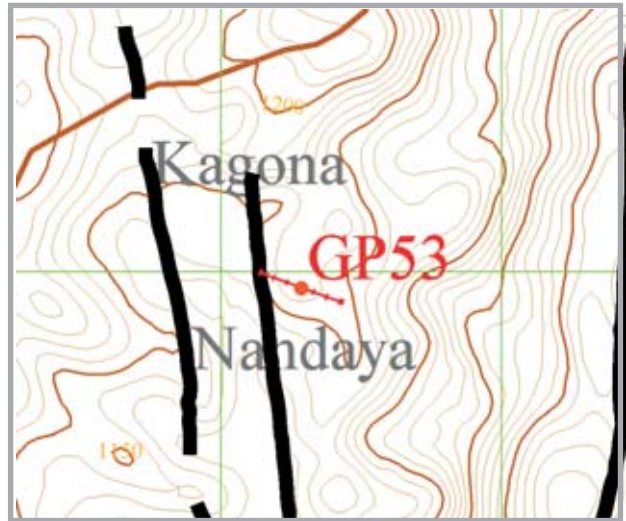
District: Neno

Village: Nandaya

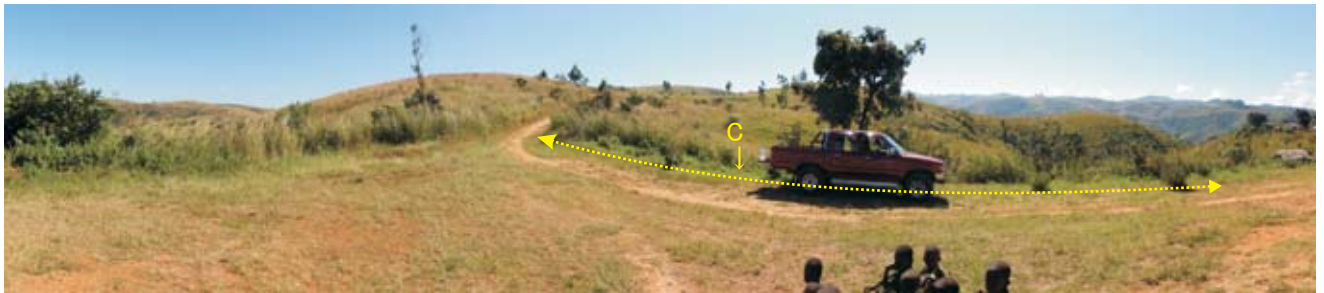
POS(UTM36) N8,301,944m ,E664,287m, Elevation=1,161m



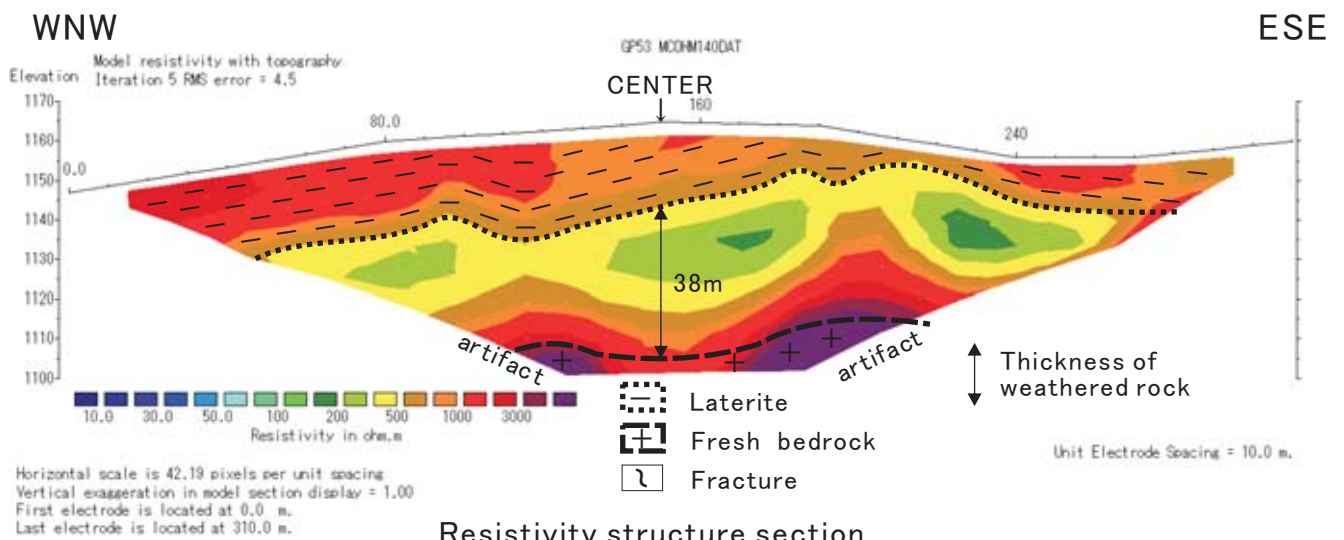
Index map



Location map



Scene of field site



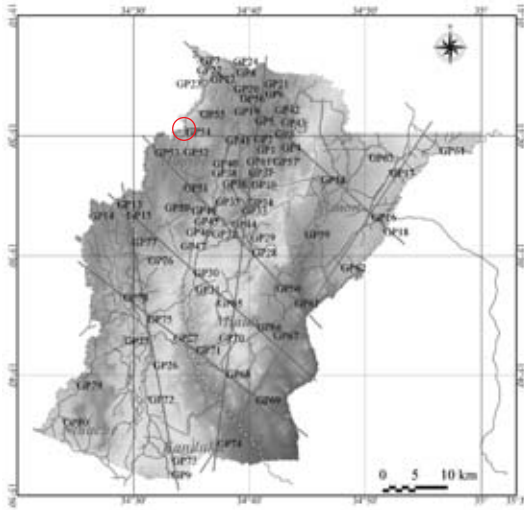
Resistivity structure section

No: GP54

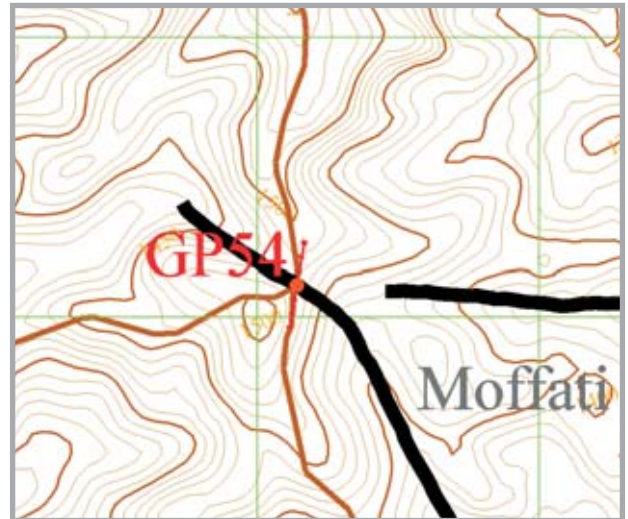
District: Neno

Village: Kumbwani

POS(UTM36) N8,305,117m ,E669,140m, Elevation=1,487m



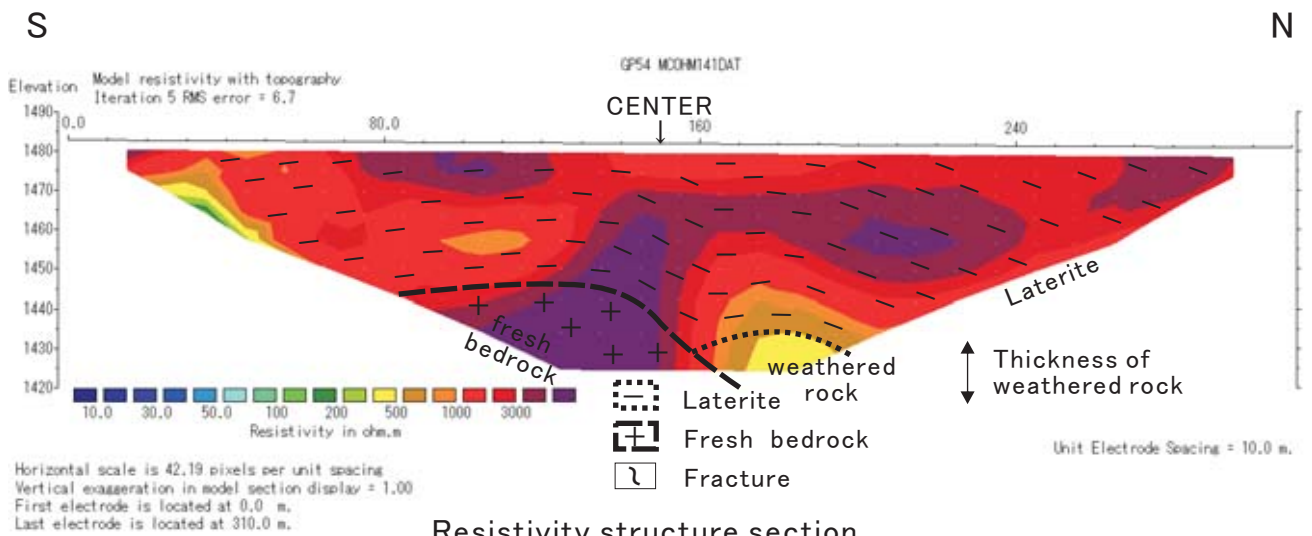
Index map



Location map



Scene of field site



Resistivity structure section

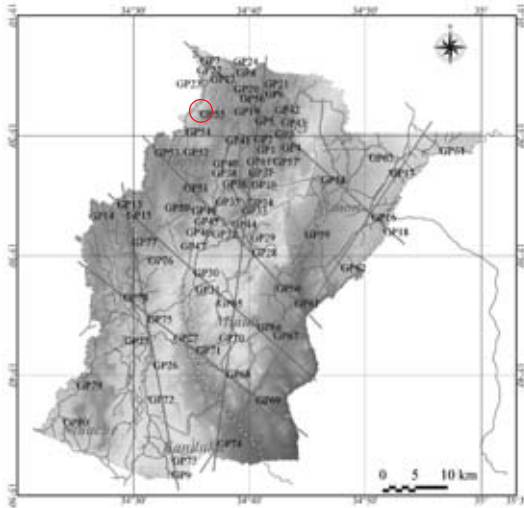


No: GP55

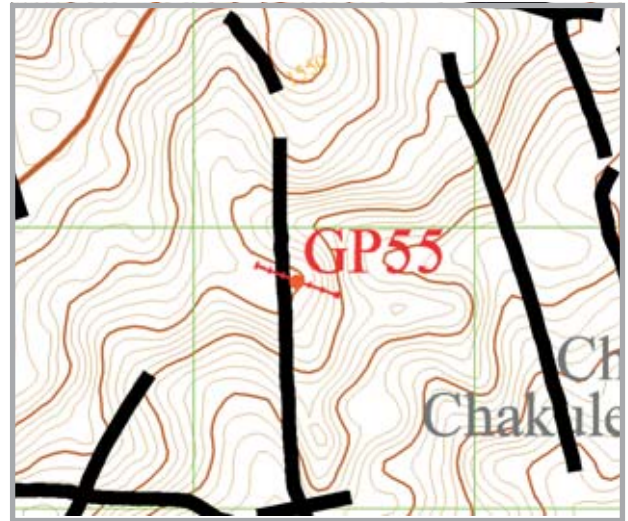
District: Neno

Village: Nseula

POS(UTM36) N8,307,811m ,E671,367m, Elevation=1,450m



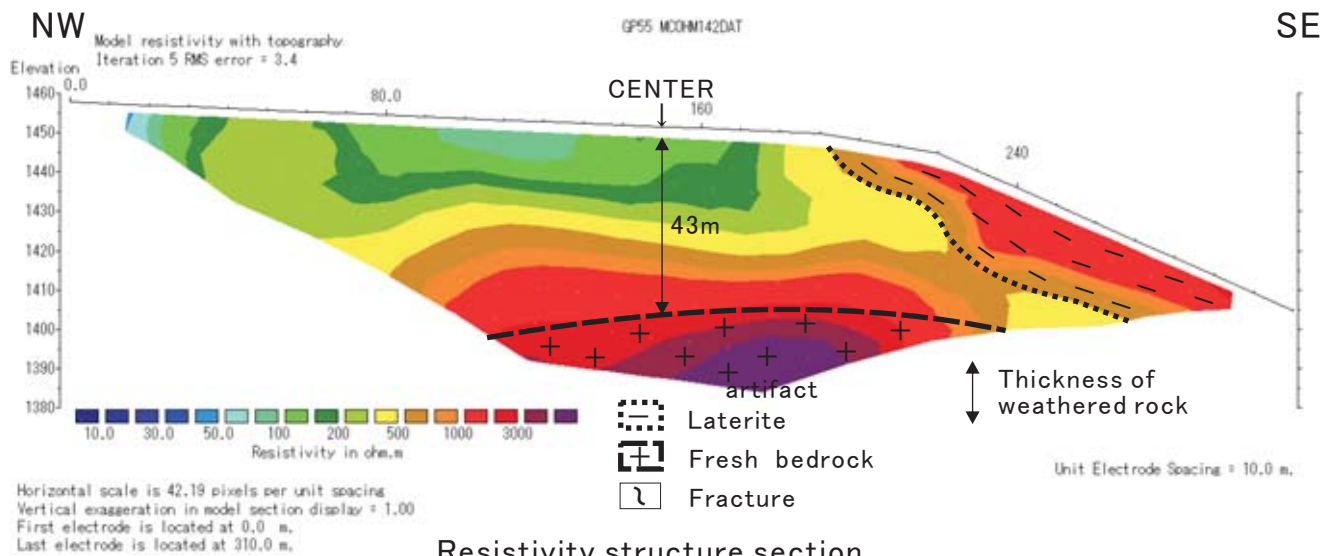
Index map



Location map



Scene of field site



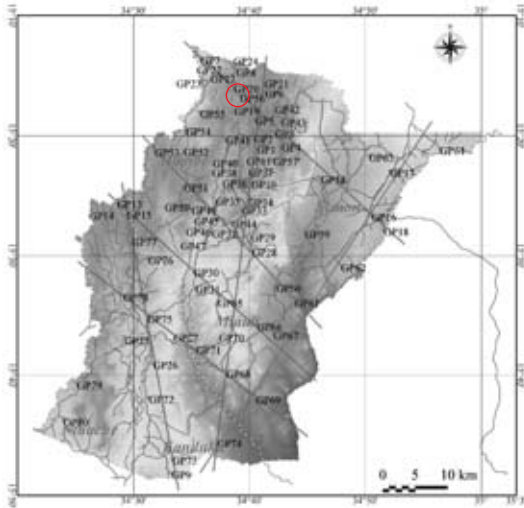
Resistivity structure section

No: GP56

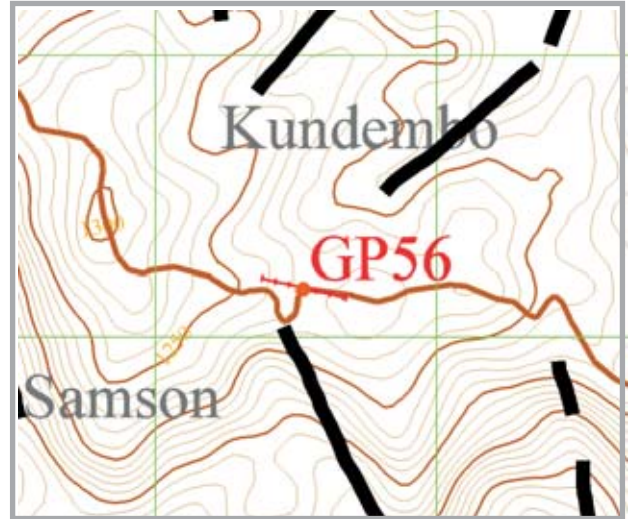
District: Neno

Village: Samson

POS(UTM36) N8,310,171m ,E677,526m, Elevation=1,225m



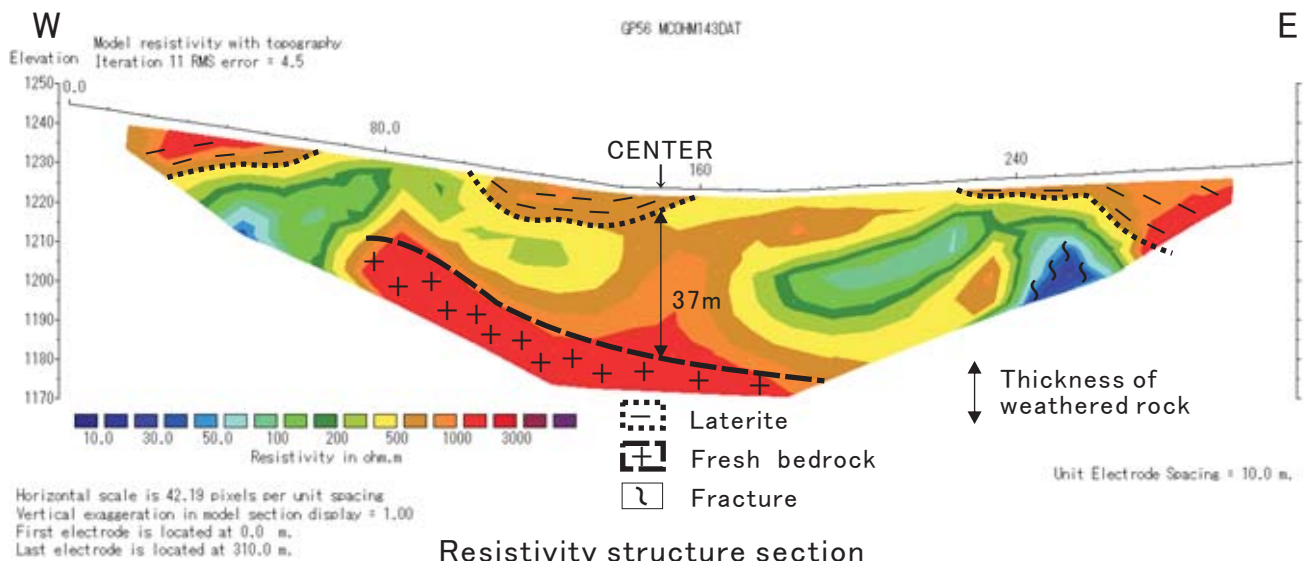
Index map



Location map



Scene of field site



Resistivity structure section

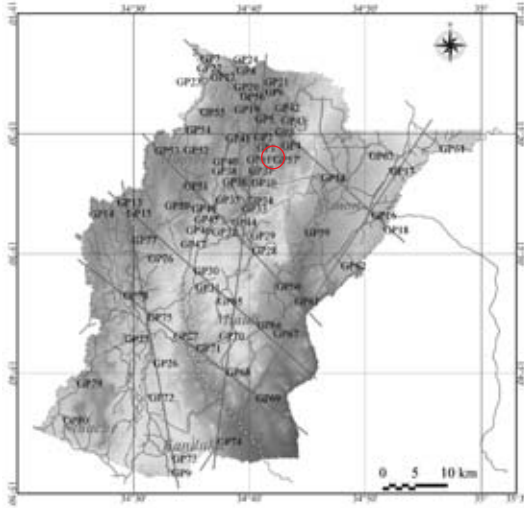


No: GP57

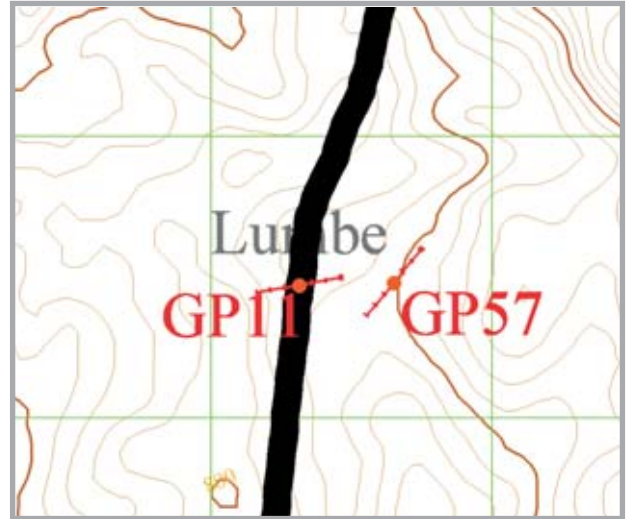
District: Neno

Village: Lumbe III

POS(UTM36) N8,300,480m ,E682,651m, Elevation=839m



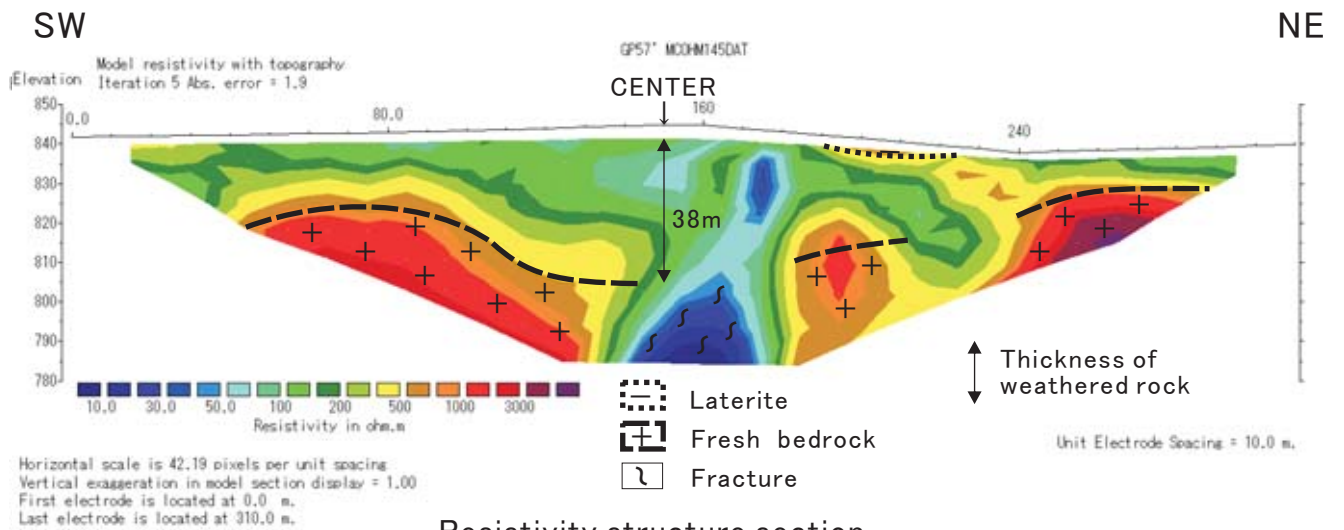
Index map



Location map



Scene of field site



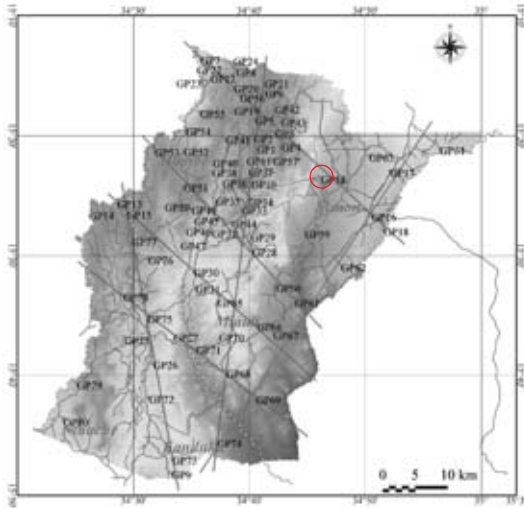
Resistivity structure section

No: GP58

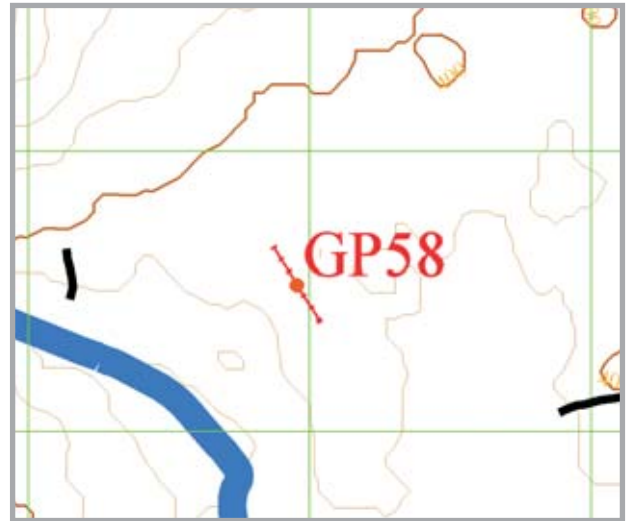
District: Neno

VillageMapundi I

POS(UTM36) N8,297,525m ,E689,955m, Elevation=398m



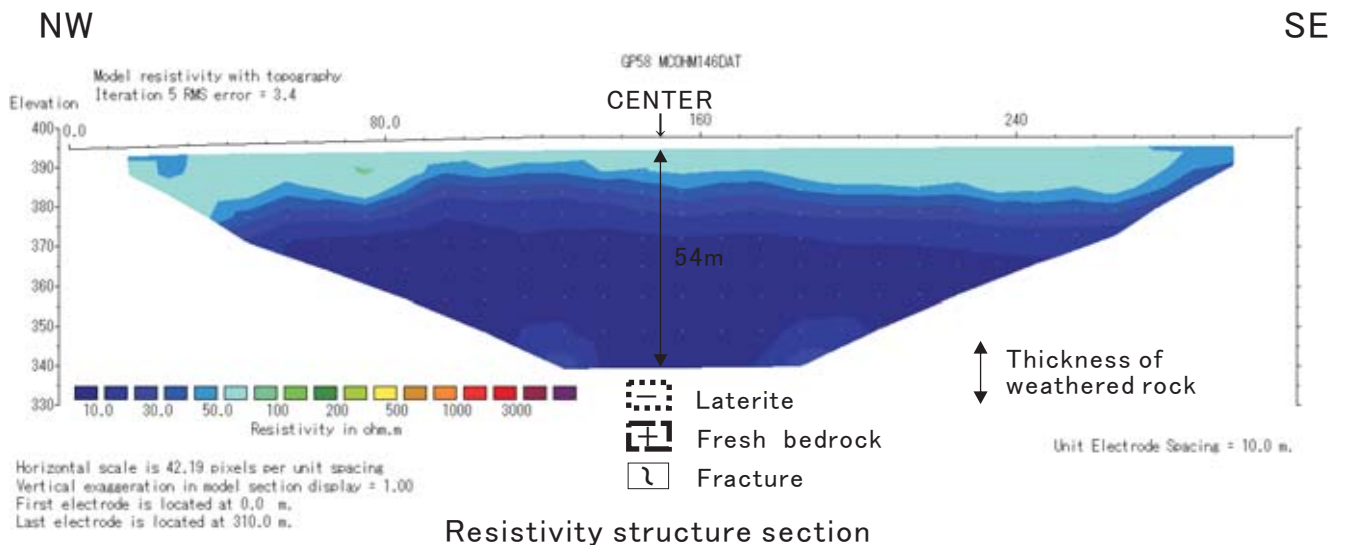
Index map



Location map



Scene of field site



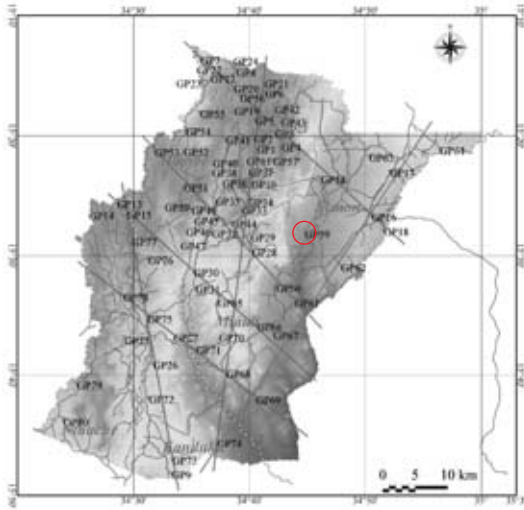


No: GP59

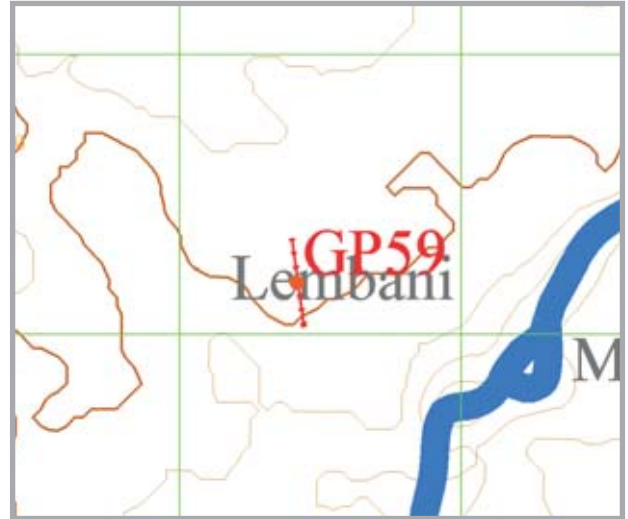
District: Neno

Village: Lembani

POS(UTM36) N8,289,186m ,E687,416m ,Elevation=341



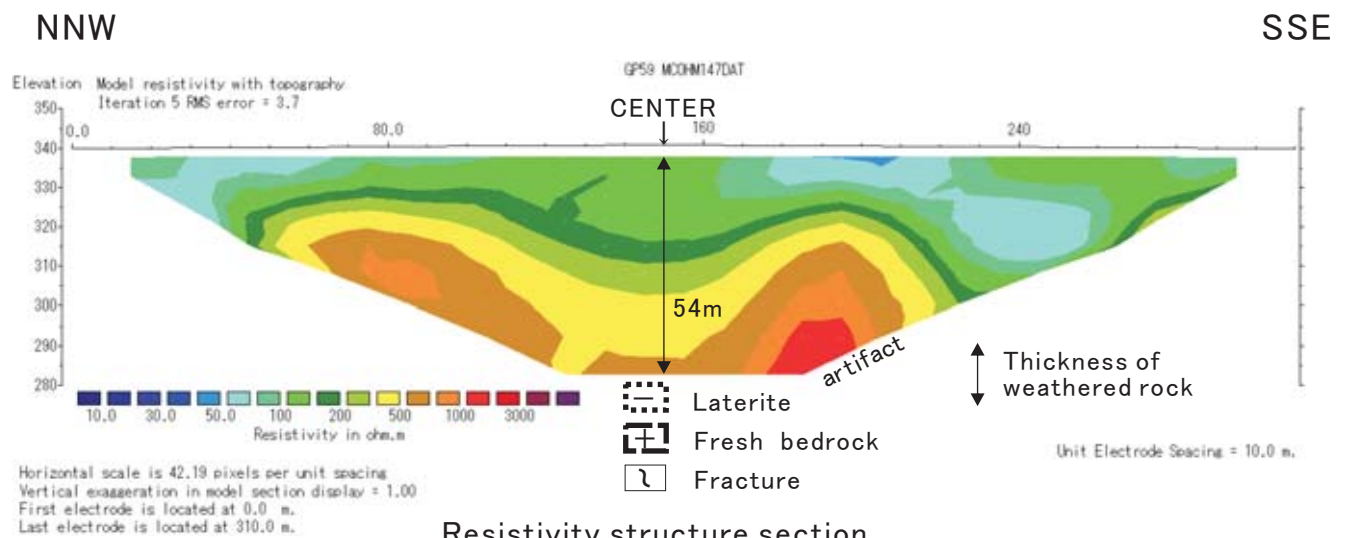
Index map



Location map



Scene of field site



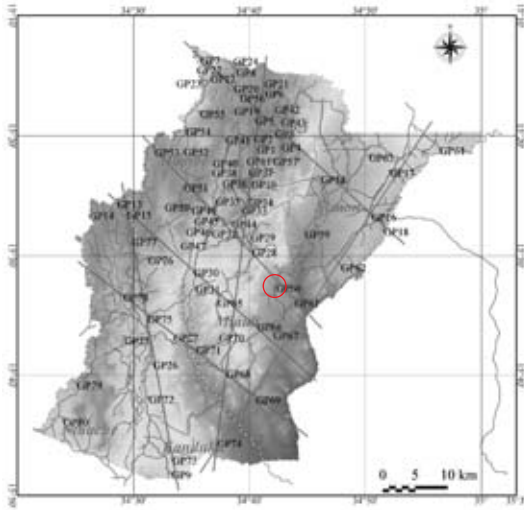
Resistivity structure section

No: GP60

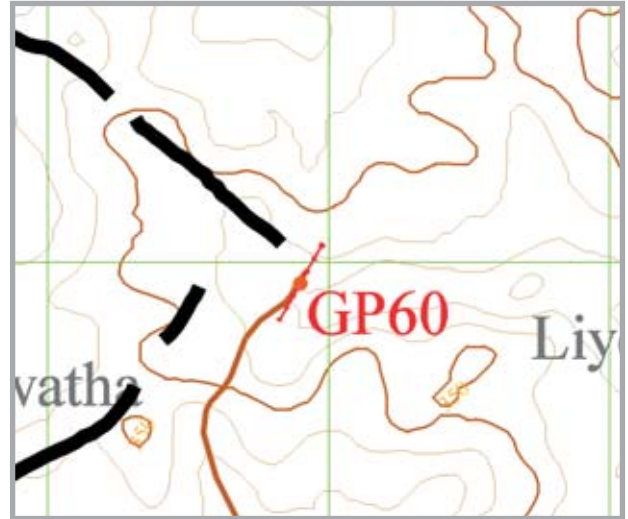
District: Neno

Village: Ndelema

POS(UTM36) N8,280,930m ,E682,899m, Elevation=336m



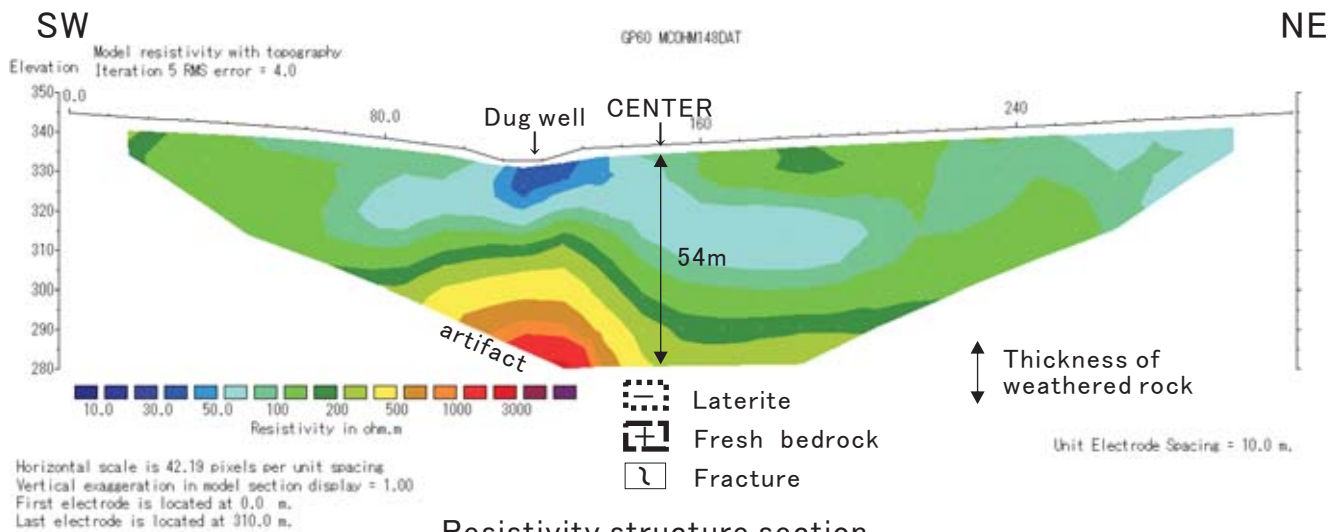
Index map



Location map



Scene of field site



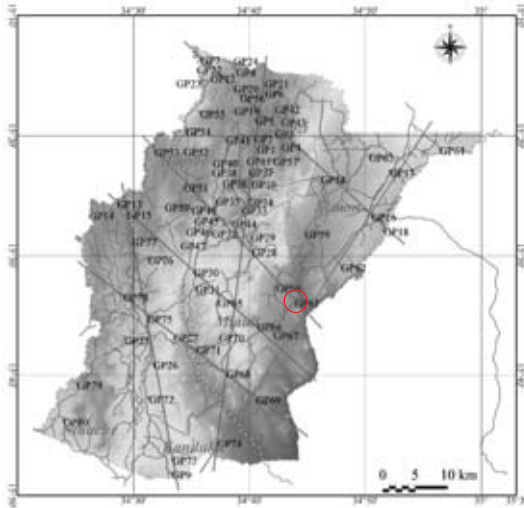


No: GP61

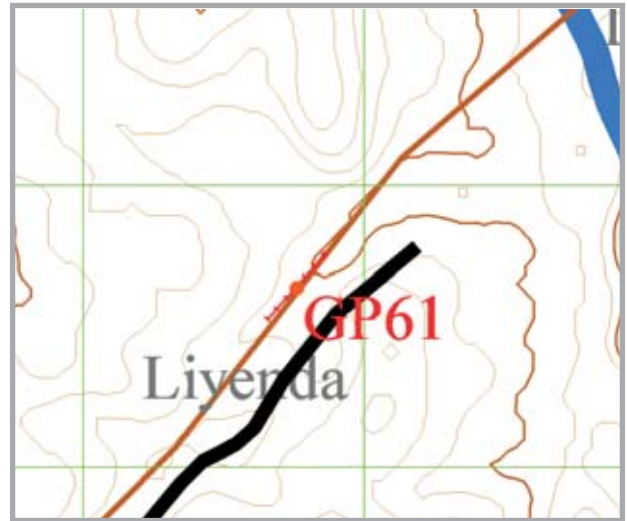
District: Neno

Village: Liyenda

POS(UTM36) N8,278,639m ,E685,761m, Elevation=308m



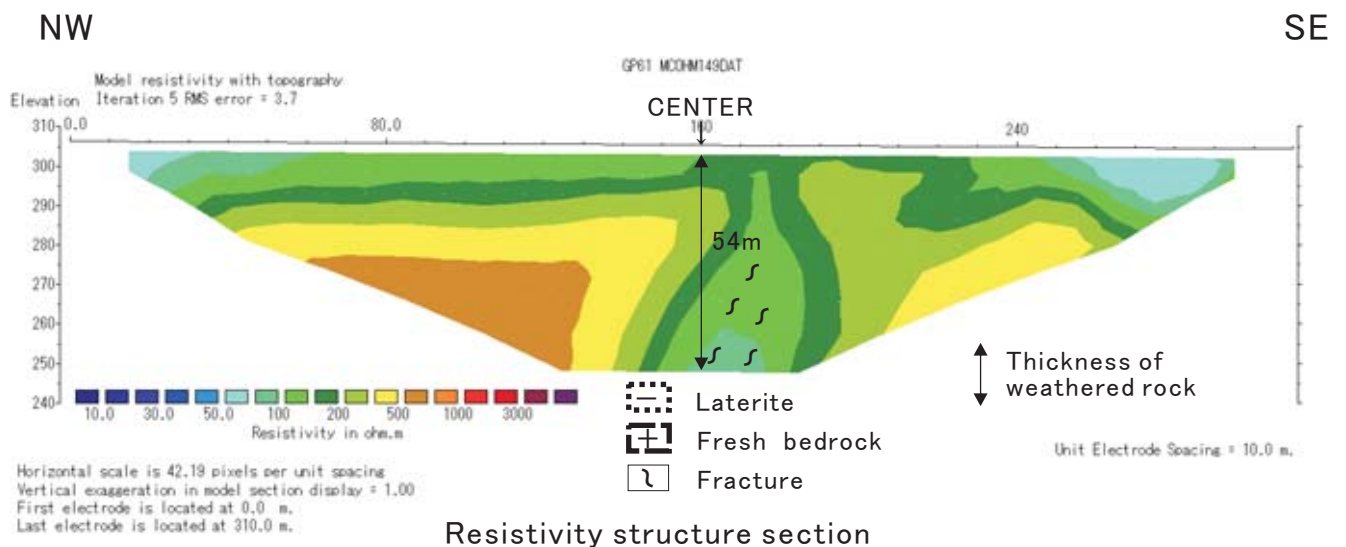
Index map



Location map



Scene of field site



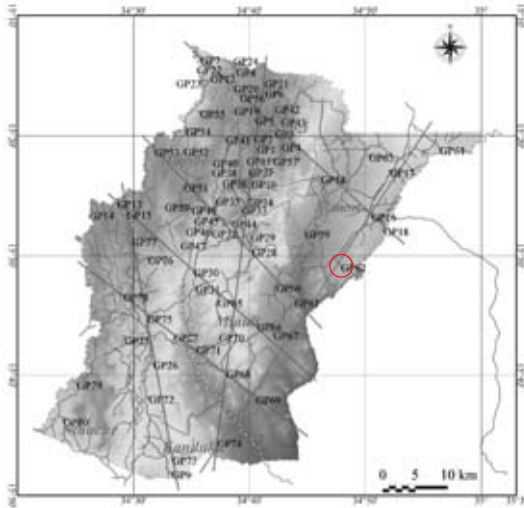
Resistivity structure section

No: GP62

District: Neno

Village: Mfingala

POS(UTM36) N8,283,874m ,E692,941m, Elevation=414m



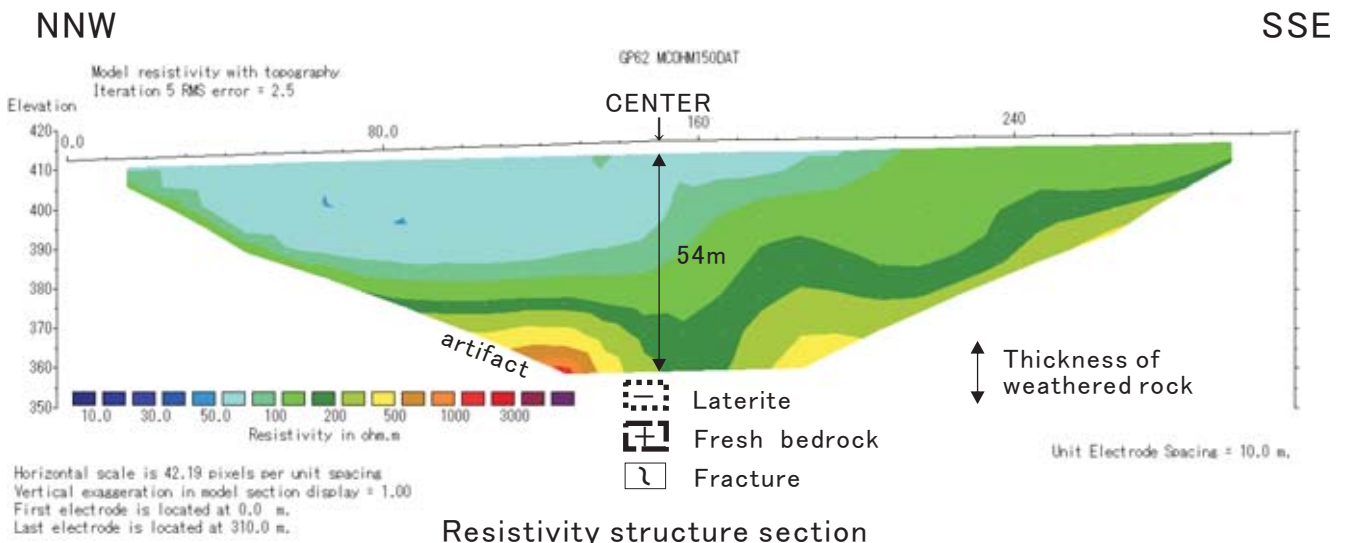
Index map



Location map



Scene of field site



Resistivity structure section

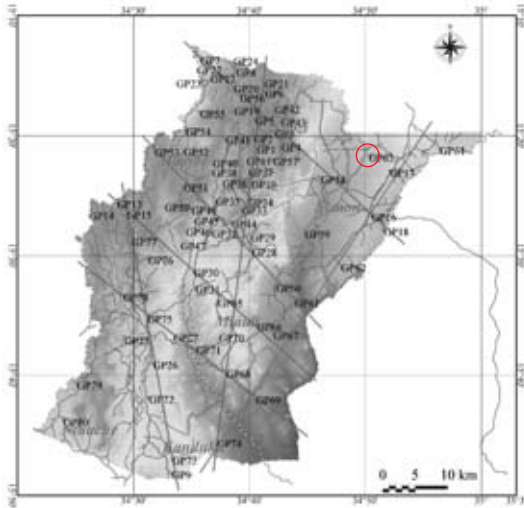


No: GP63

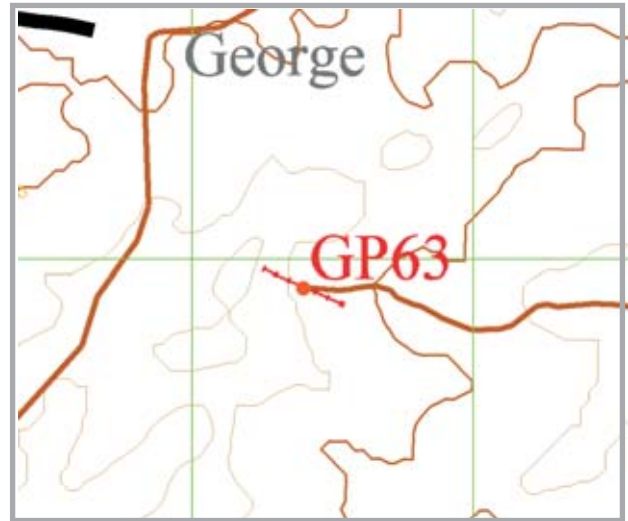
District: Neno

Village: George II

POS(UTM36) N8,300,902m ,E697,396m, Elevation=444m



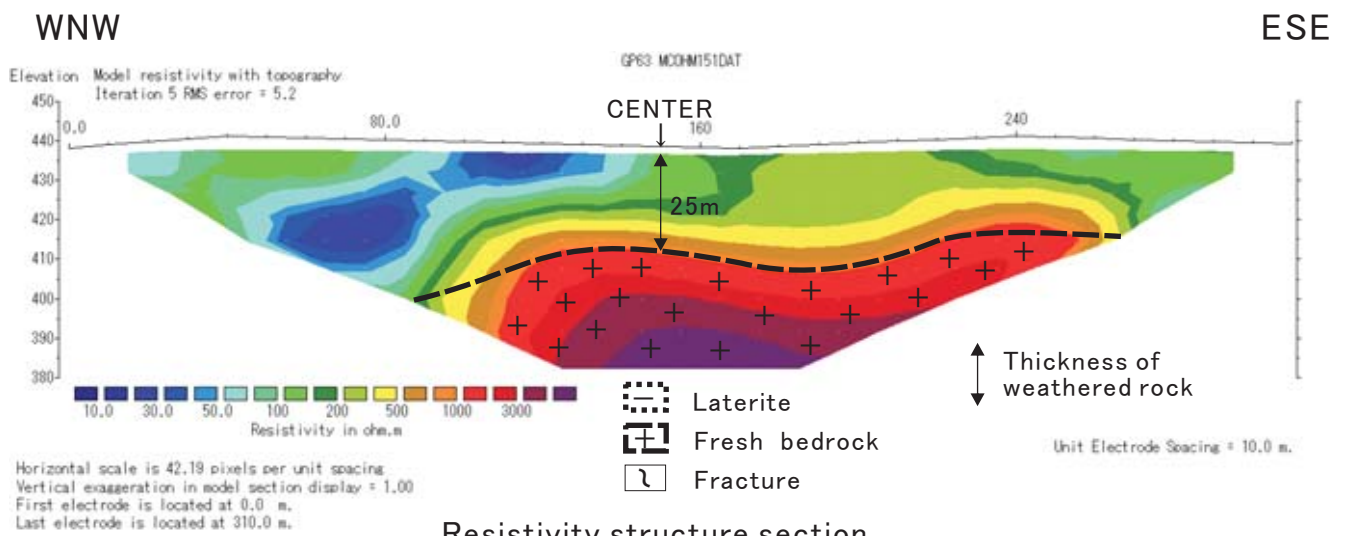
Index map



Location map



Scene of field site



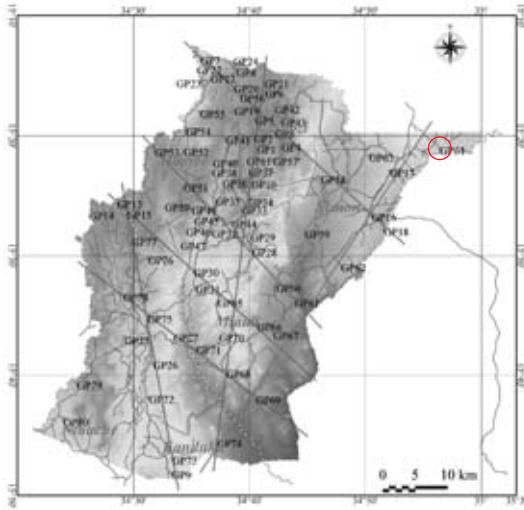
Resistivity structure section

No: GP64

District: Neno

Village: Njalamanu

POS(UTM36) N8,301,884m ,E708,334m ,Elevation=475m



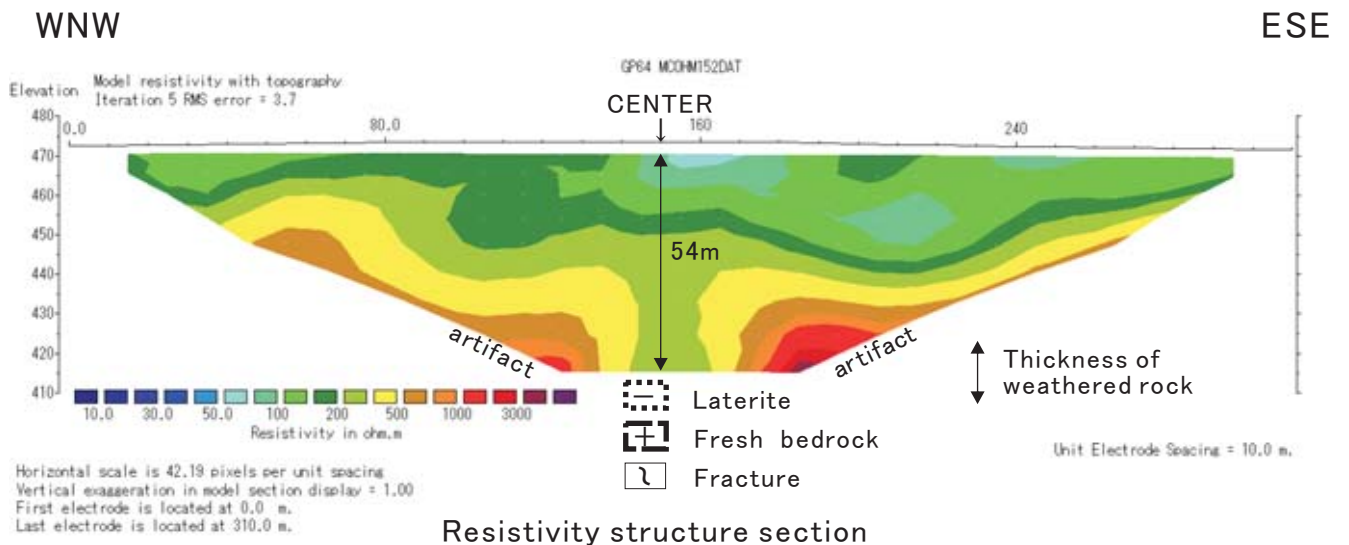
Index map



Location map



Scene of field site



Resistivity structure section

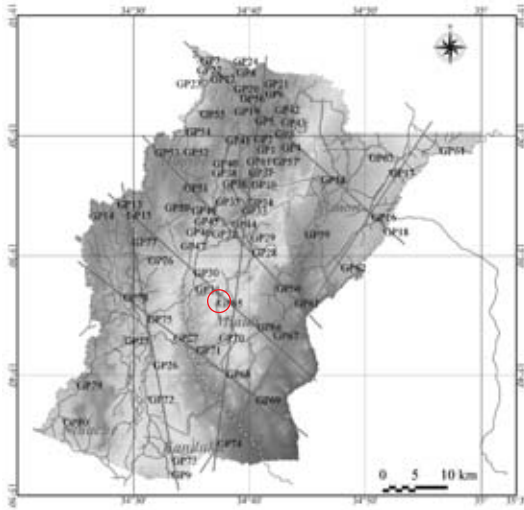


No: GP65

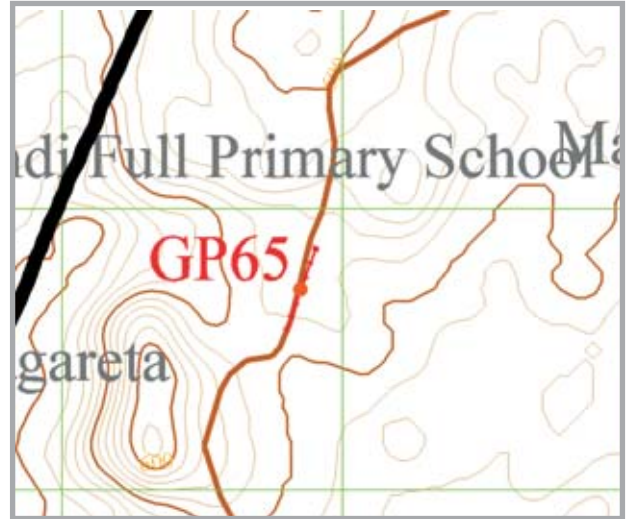
District: Neno

Village: Jamu

POS(UTM36) N8,278,718m ,E673,850m, Elevation=565m



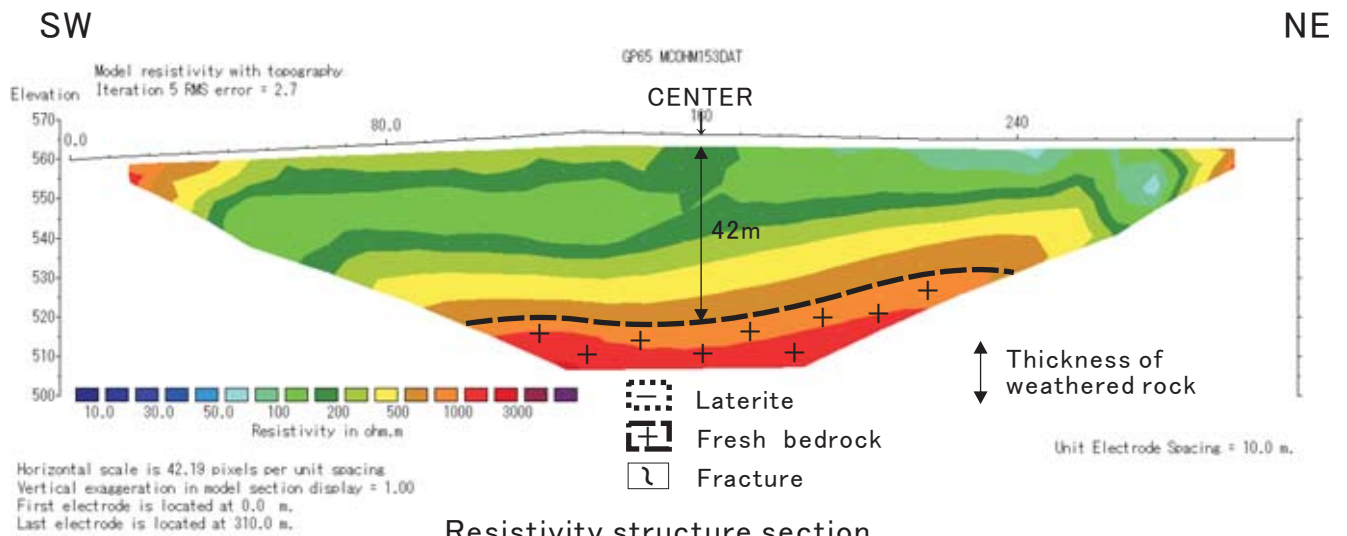
Index map



Location map



Scene of field site



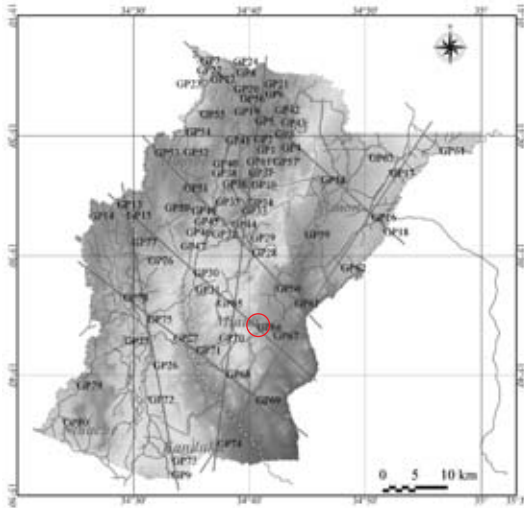
Resistivity structure section

No: GP66

District: Neno

Village: Kazumga II

POS(UTM36) N8,275,015m ,E679,945m, Elevation=415m



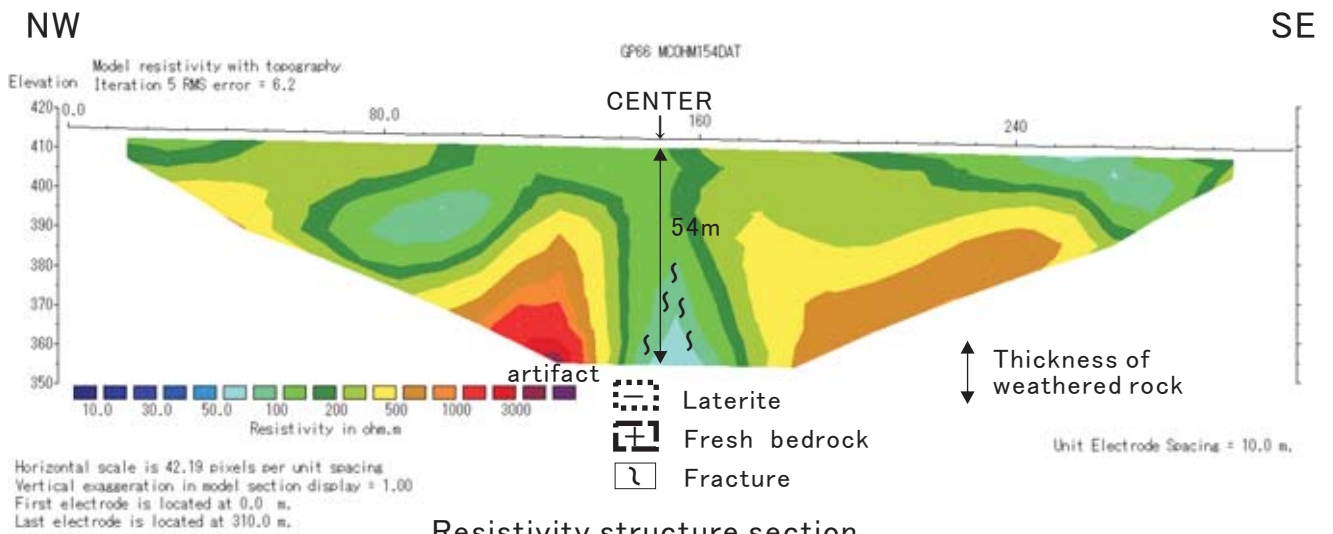
Index map



Location map



Scene of field site



Resistivity structure section

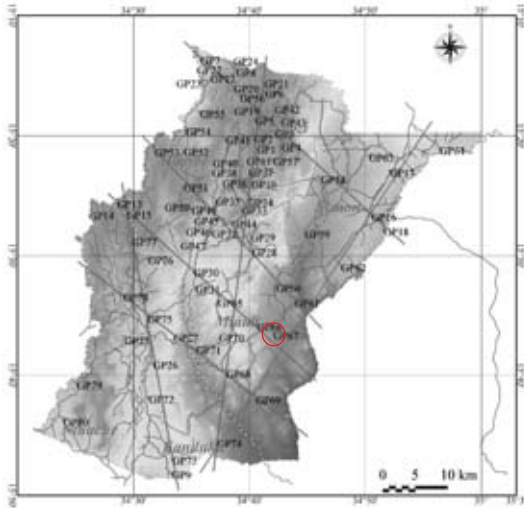


No: GP67

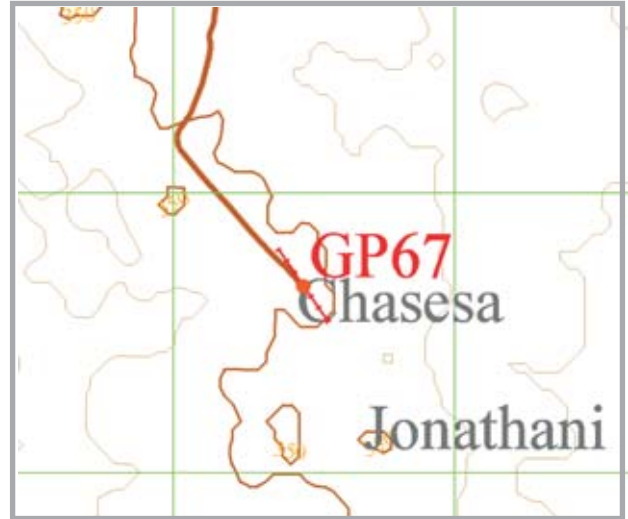
District: Neno

Village: Jonasan II

POS(UTM36) N8,273,670m ,E682,461m, Elevation=354m



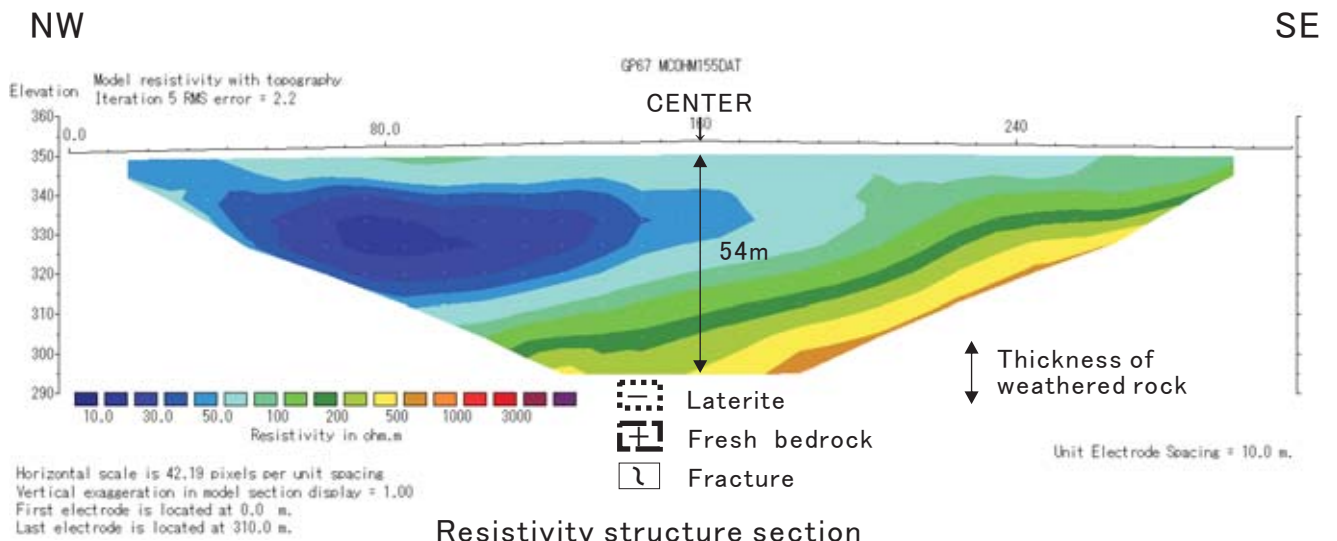
Index map



Location map



Scene of field site



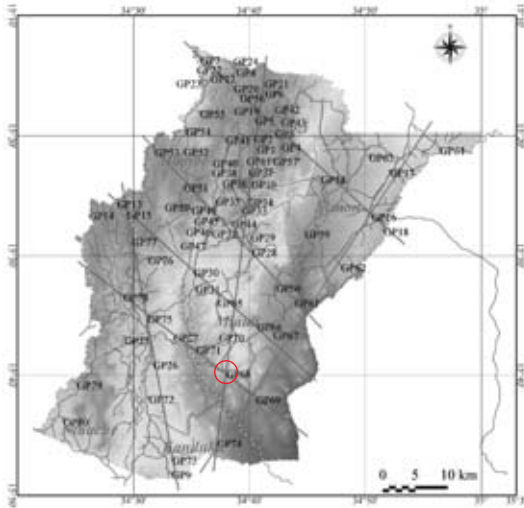
Resistivity structure section

No: GP68

District: Neno

Village: Fram

POS(UTM36) N8,267,783m ,E675,067m, Elevation=421m



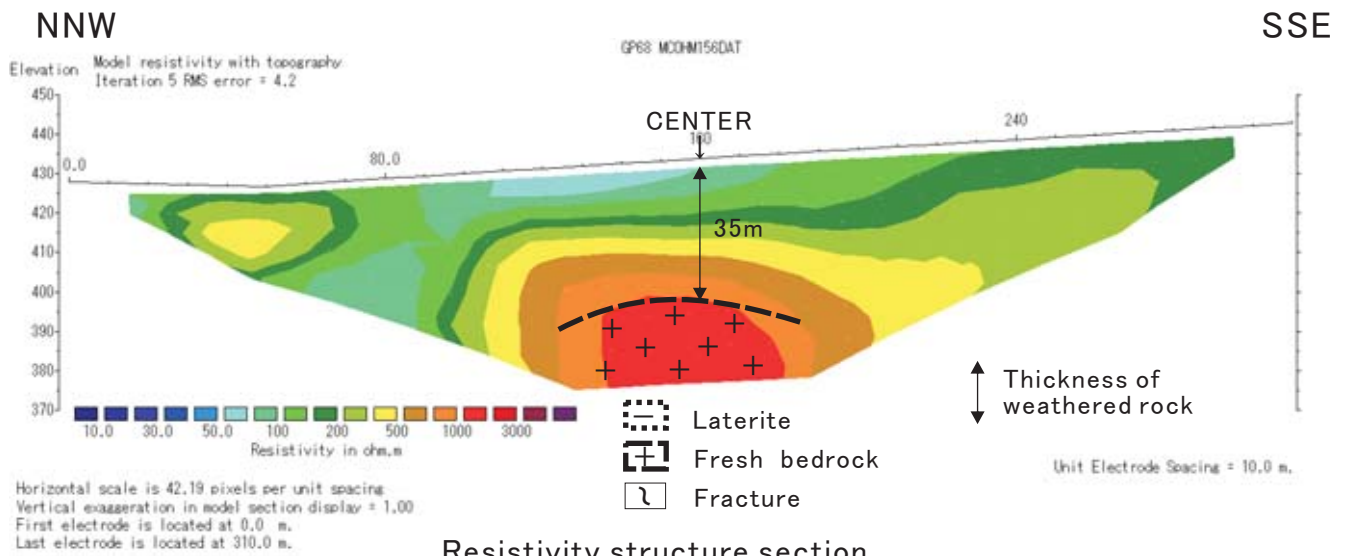
Index map



Location map



Scene of field site



Resistivity structure section

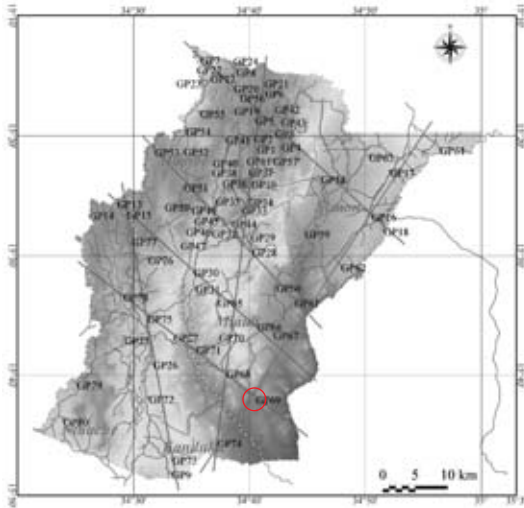


No: GP69

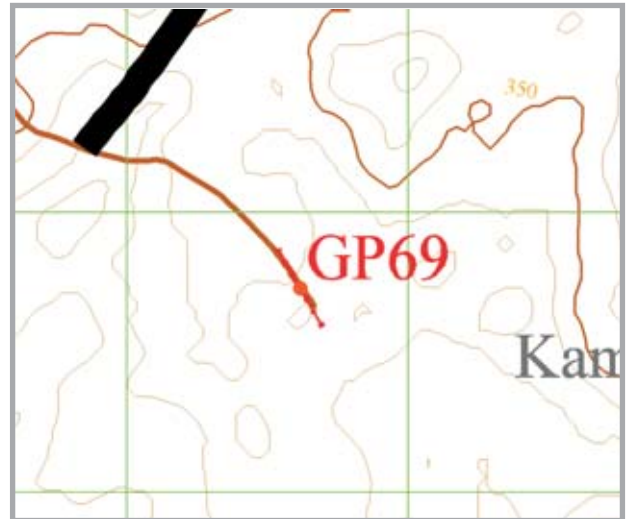
District: Neno

Village: Feremu

POS(UTM36) N8,263,732m ,E679,619m, Elevation=340m



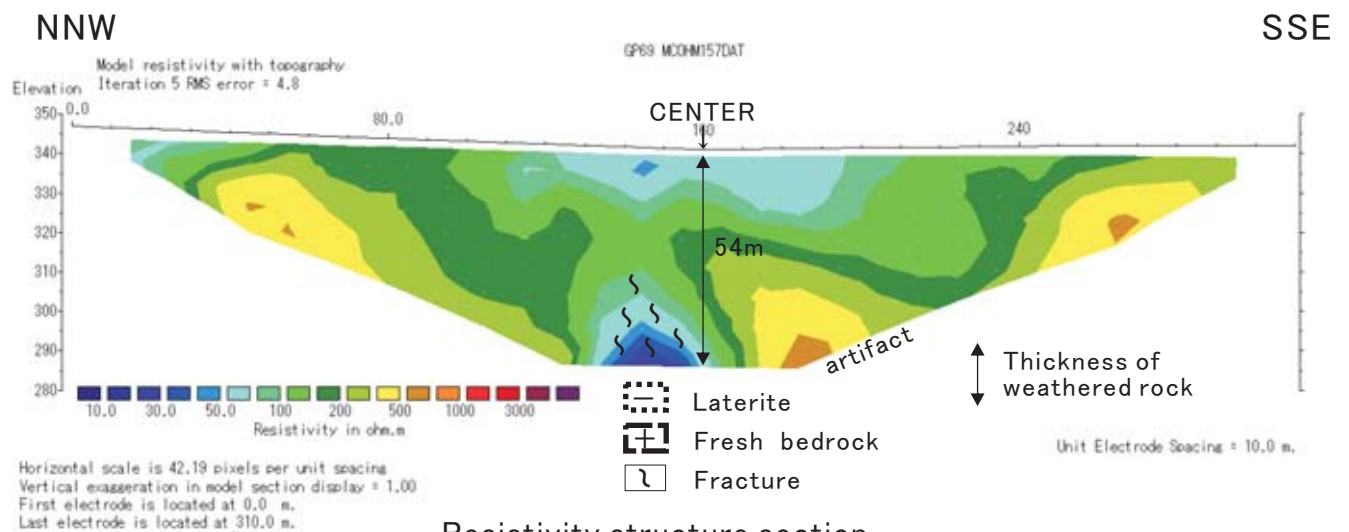
Index map



Location map



Scene of field site



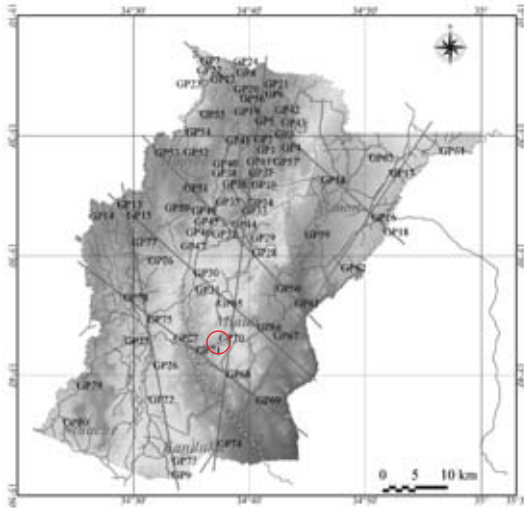
Resistivity structure section

No: GP70

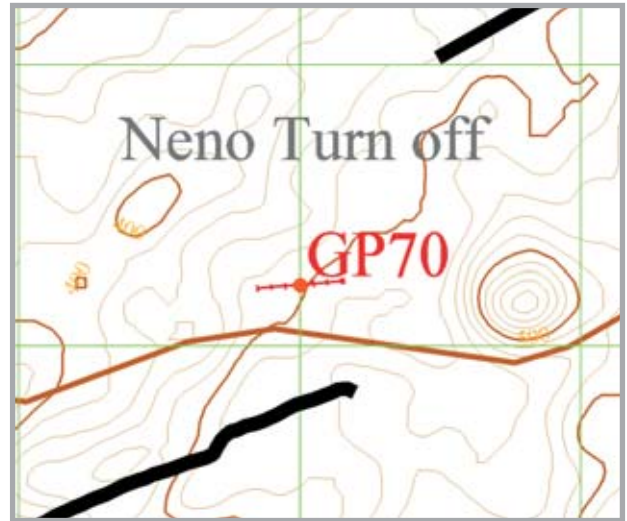
District: Neno

Village: Kaniedza

POS(UTM36) N8,272,218m ,E674,002m, Elevation=435m



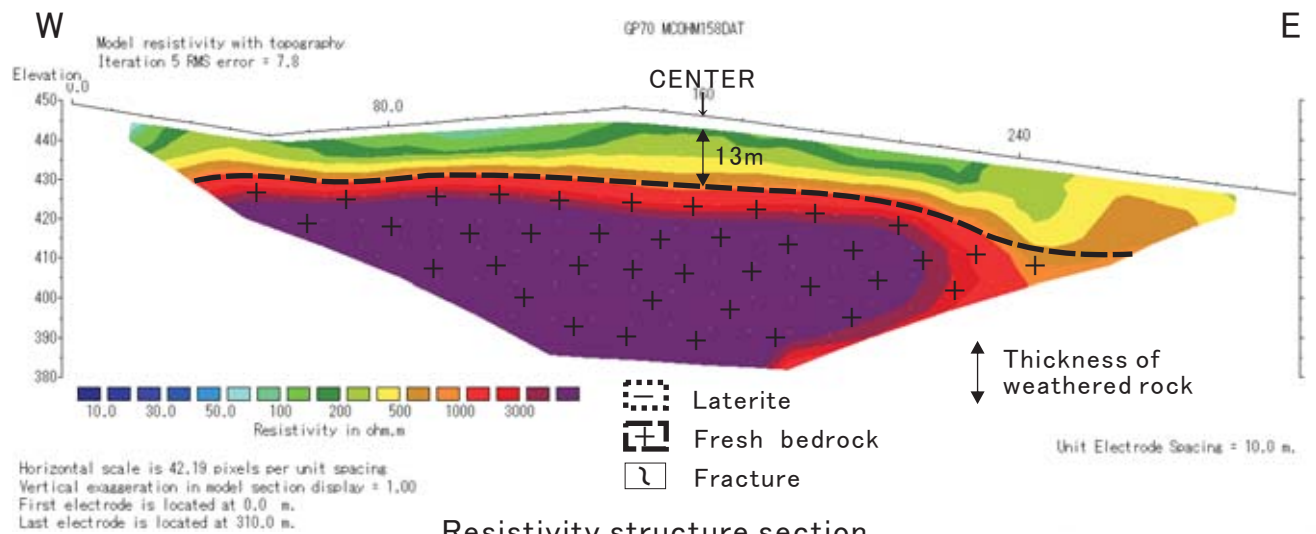
Index map



Location map



Scene of field site



Resistivity structure section

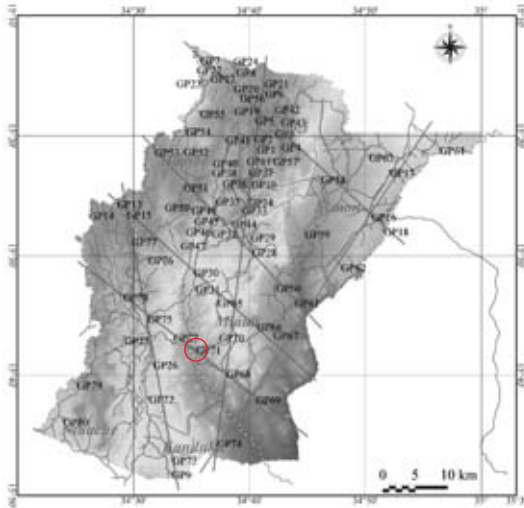


No: GP71

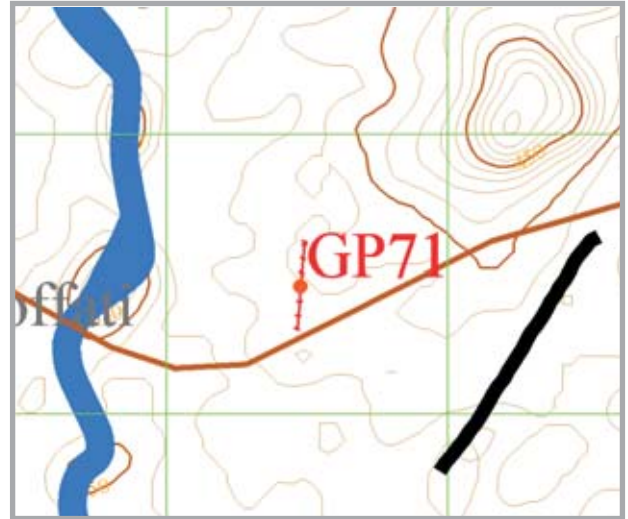
District: Neno

Village: Chigona

POS(UTM36) N8,271,460m ,E670,476m, Elevation=388m



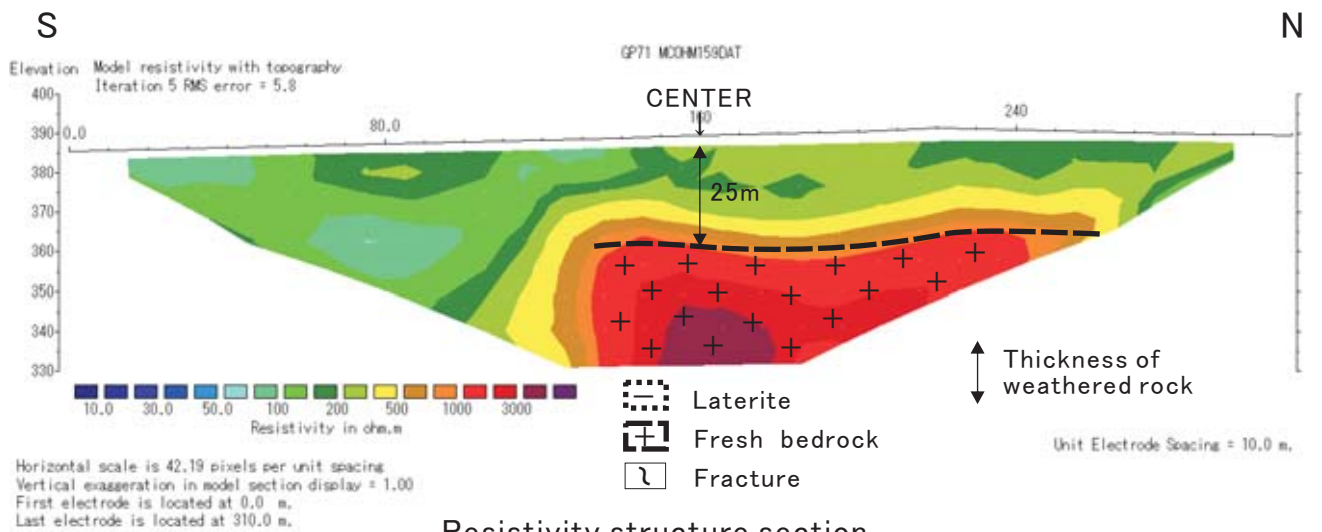
Index map



Location map



Scene of field site

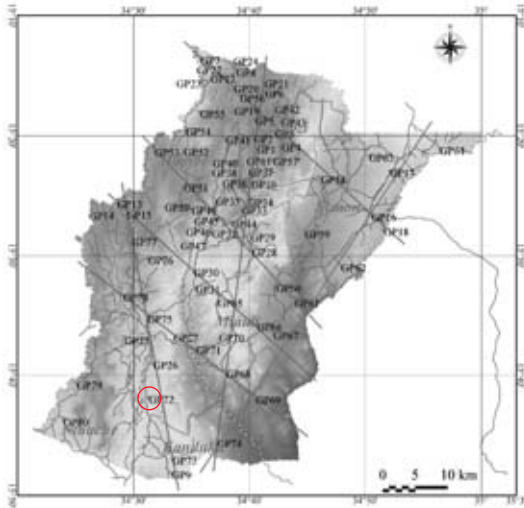


No: GP72

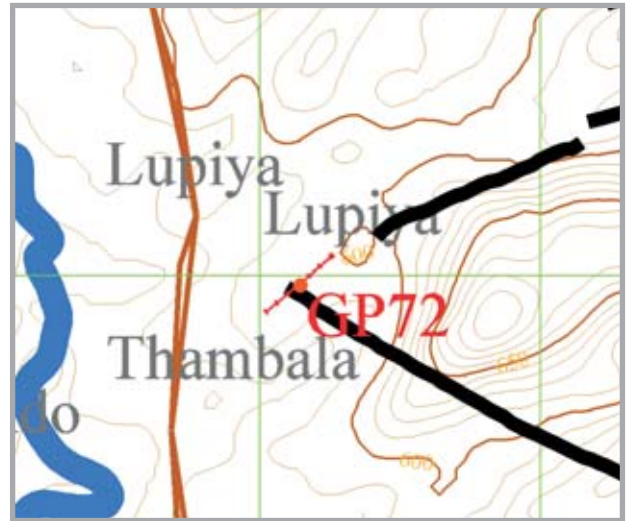
District: Mwanza

Village: Kaunje

POS(UTM36) N8,263,966m ,E663,146m, Elevation=593m



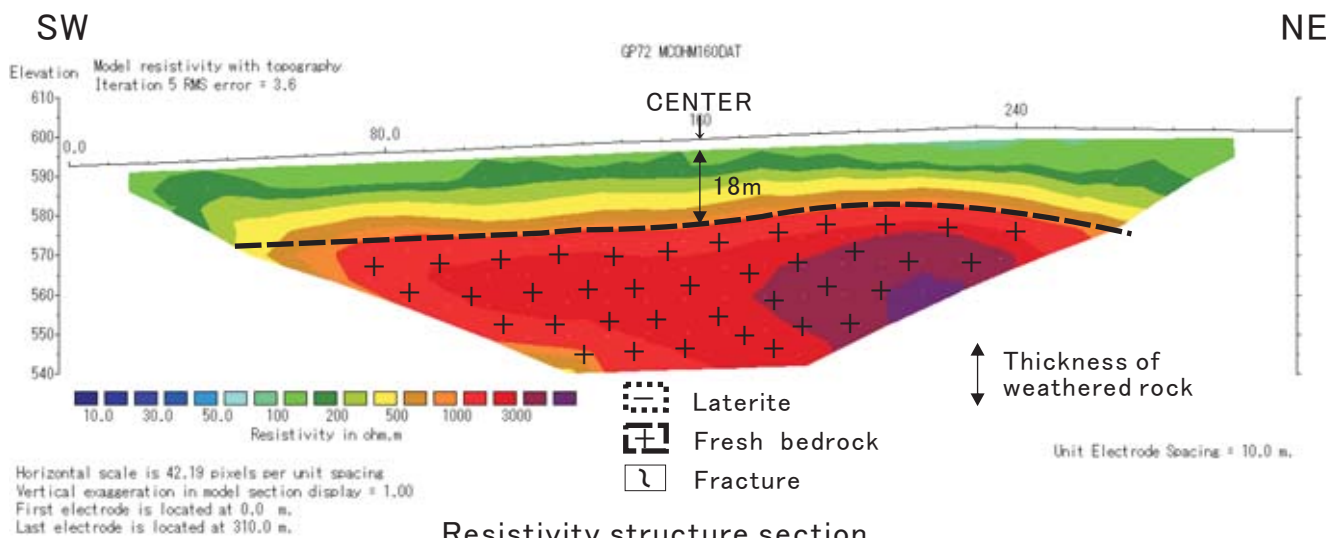
Index map



Location map



Scene of field site



Resistivity structure section

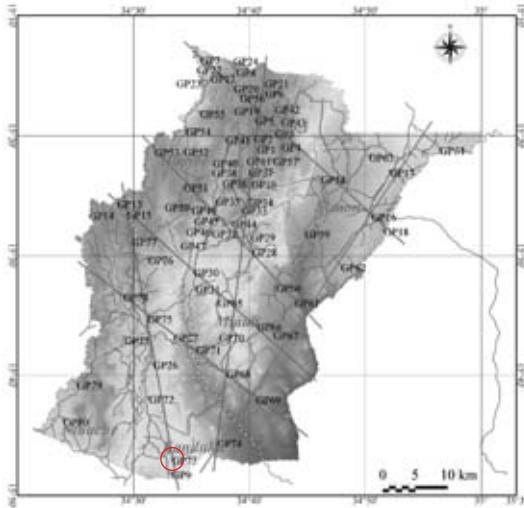


No: GP73

District: Mwanza

Village: Chiphaso

POS(UTM36) N8,254,579m ,E666,689m, Elevation=621m



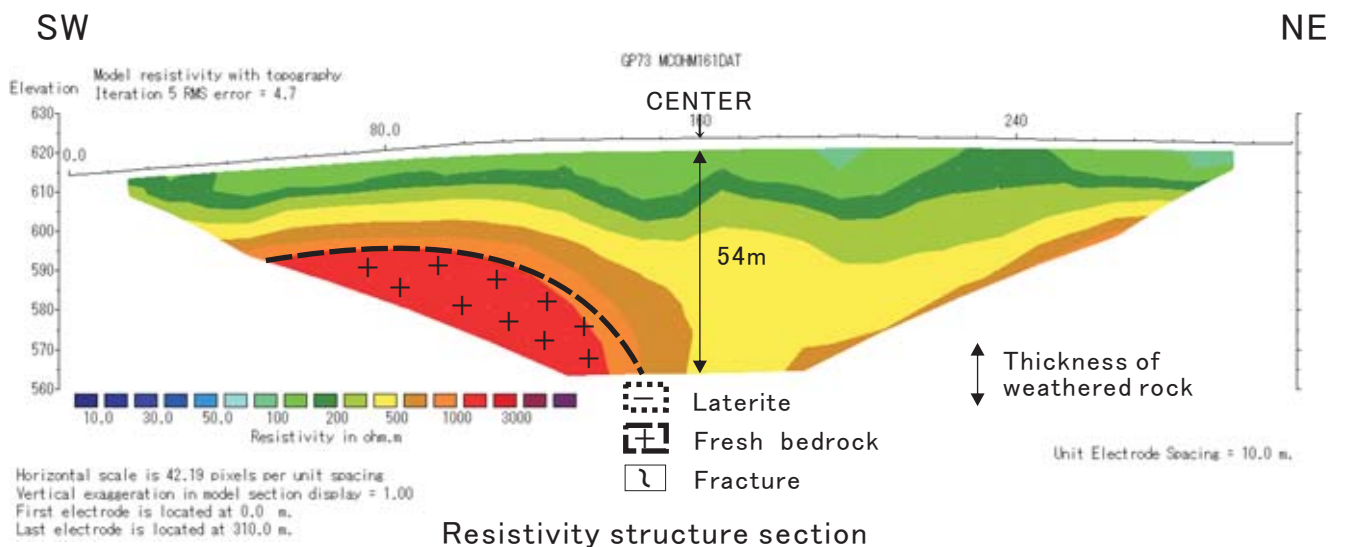
Index map



Location map



Scene of field site



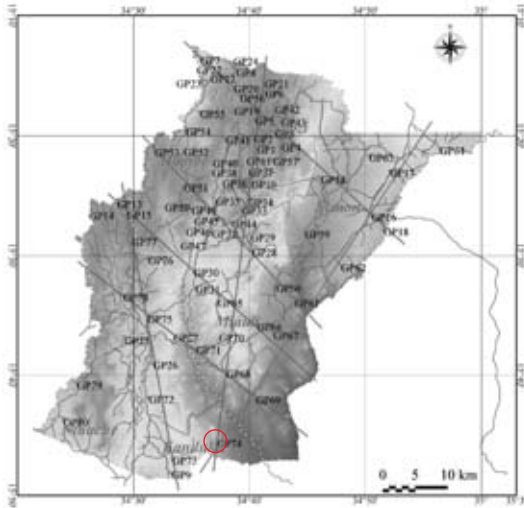
Resistivity structure section

No: GP74

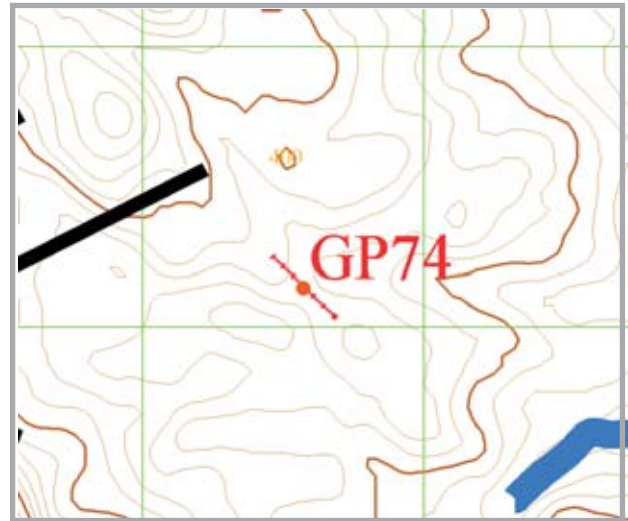
District: Mwanza

Village: Mulingalira

POS(UTM36) N8,257,141m ,E673,572m, Elevation=379m



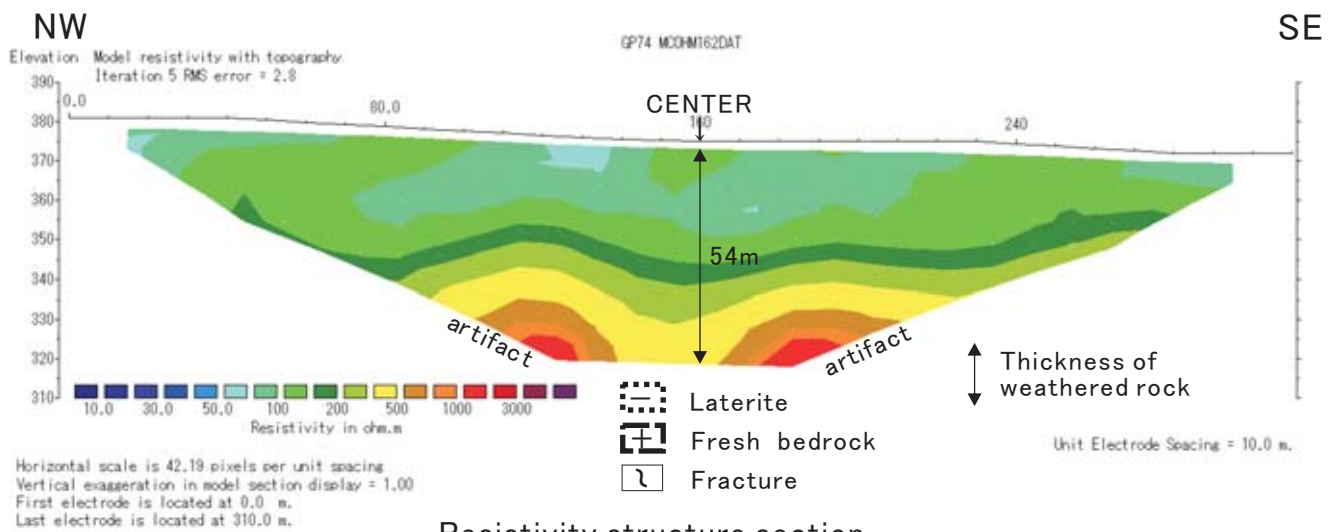
Index map



Location map



Scene of field site



Resistivity structure section

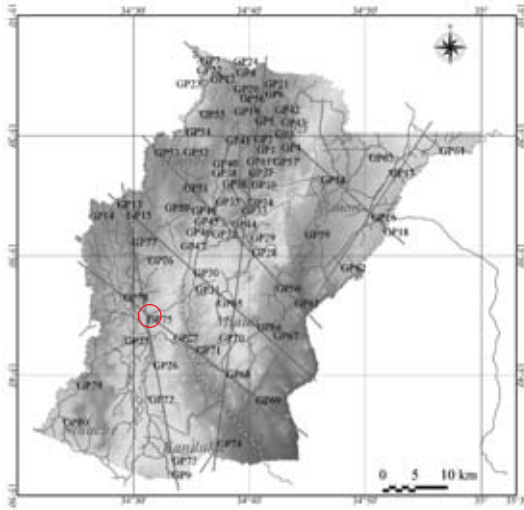


No: GP75

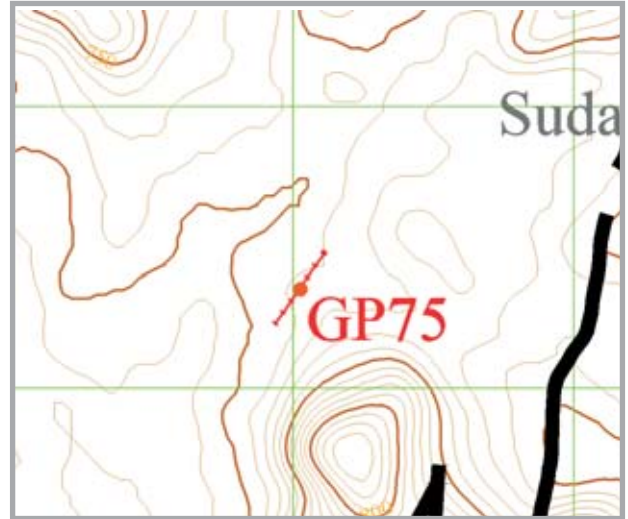
District: Mwanza

Village: Sundala

POS(UTM36) N8,276,354m ,E663,027m, Elevation=699m



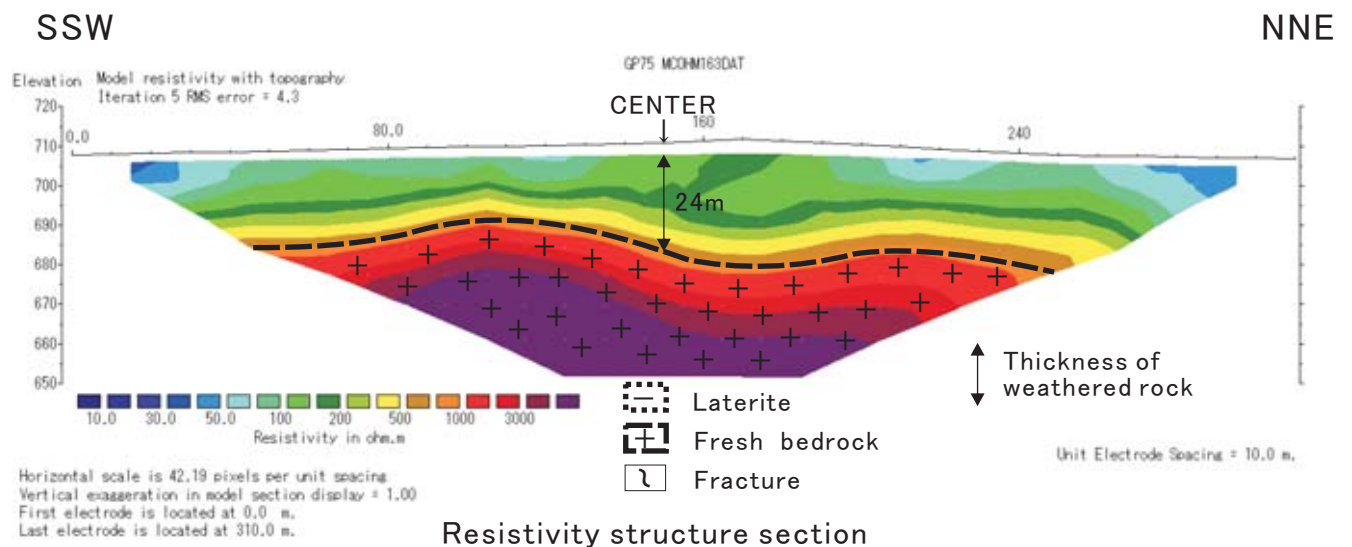
Index map



Location map



Scene of field site



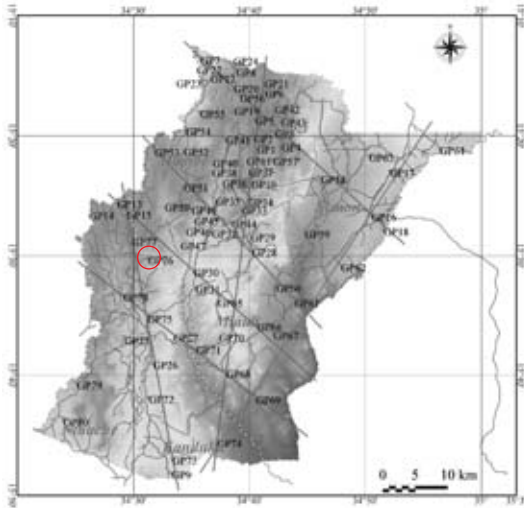
Resistivity structure section

No: GP76

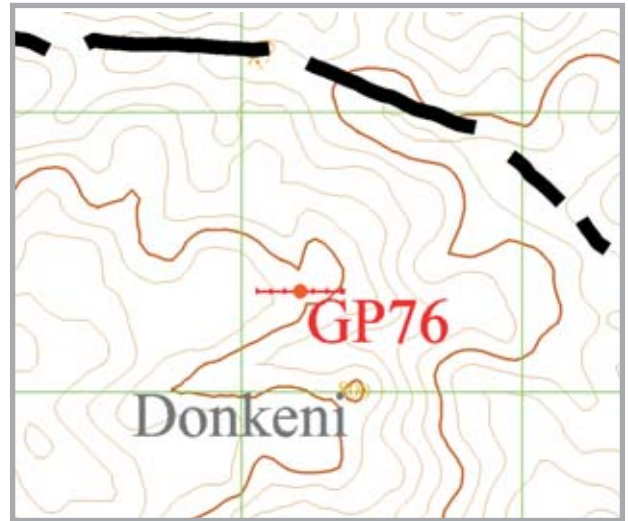
District: Mwanza

Village: Molleni

POS(UTM36) N8,285,364m ,E663,210m, Elevation=800m



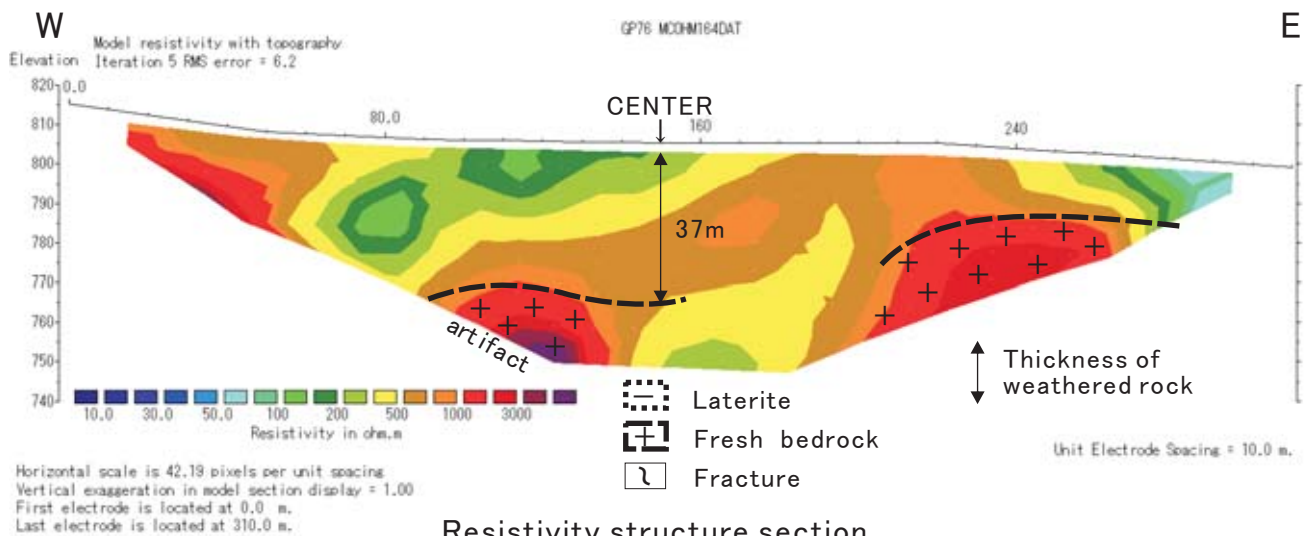
Index map



Location map



Scene of field site



Resistivity structure section

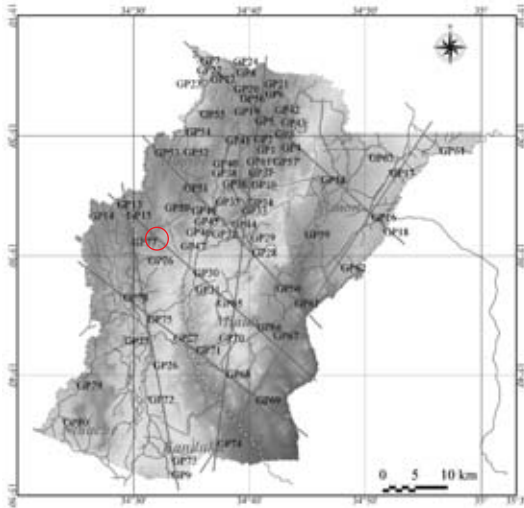


No: GP77

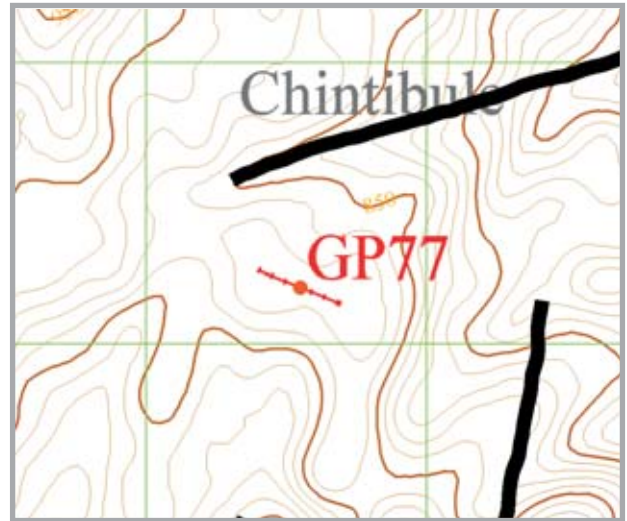
District: Neno

Village: Chitimbe school

POS(UTM36) N8,288,200m ,E664,550m, Elevation=868m



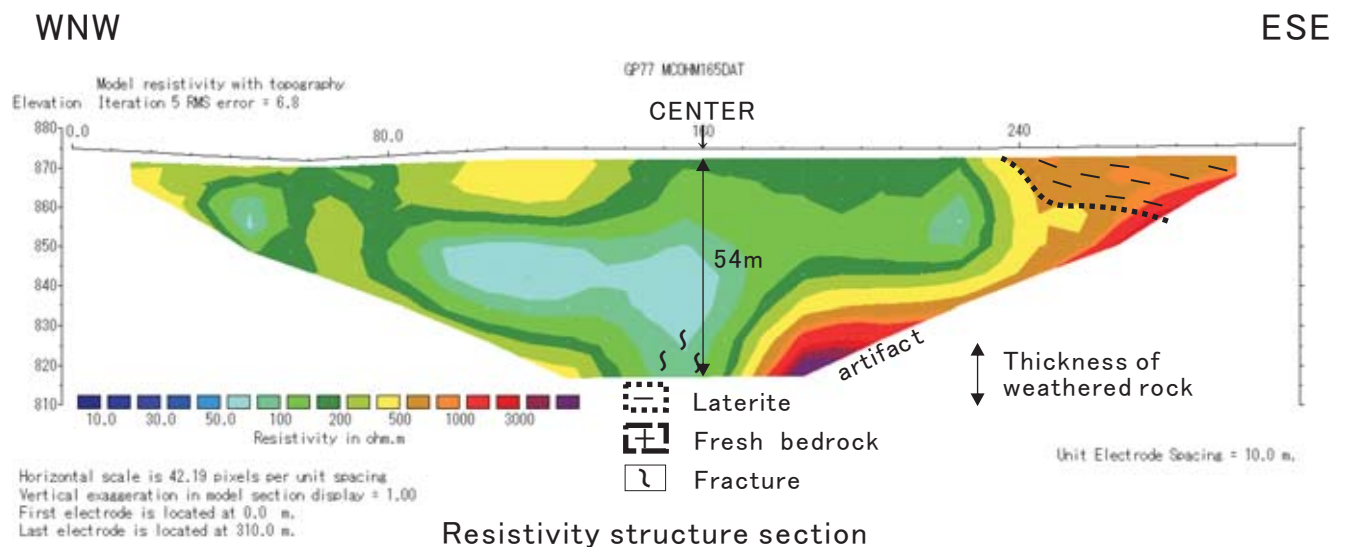
Index map



Location map



Scene of field site



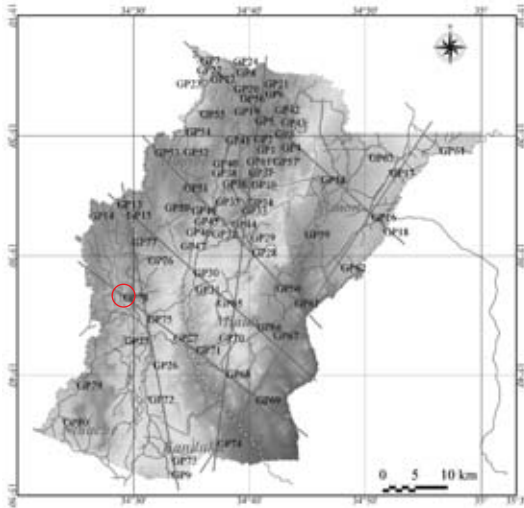
Resistivity structure section

No: GP78

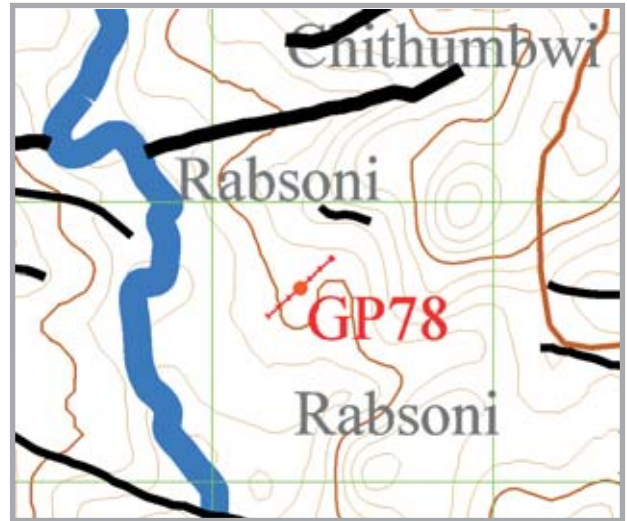
District: Mwanza

Village: Rabisoni

POS(UTM36) N8,279,695m ,E659,314m, Elevation=760m



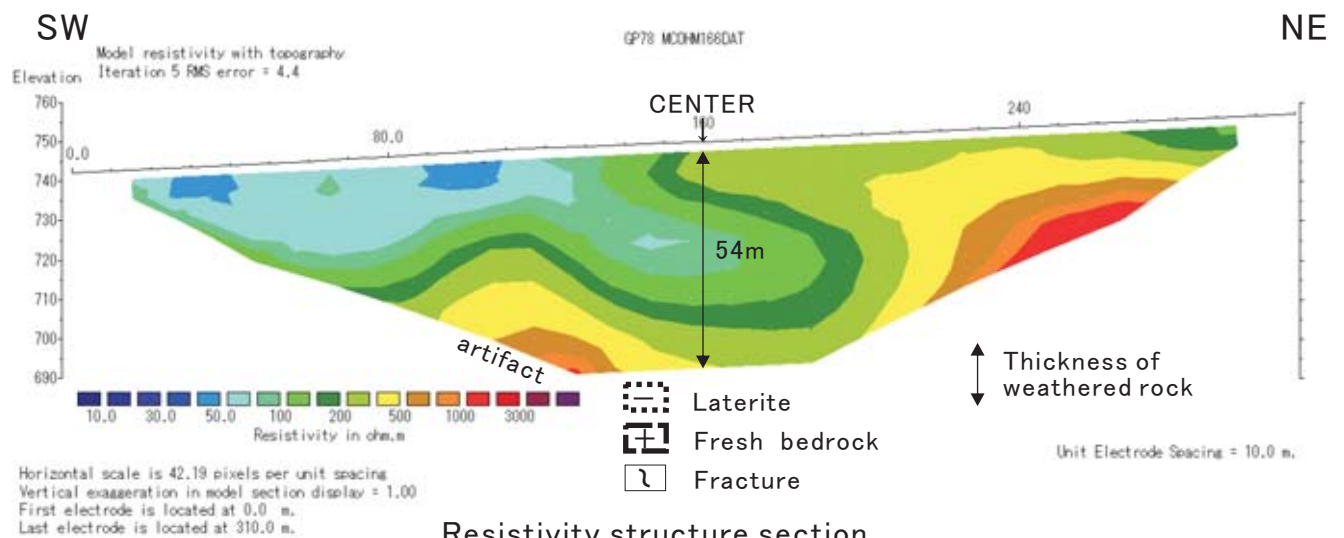
Index map



Location map



Scene of field site



Resistivity structure section

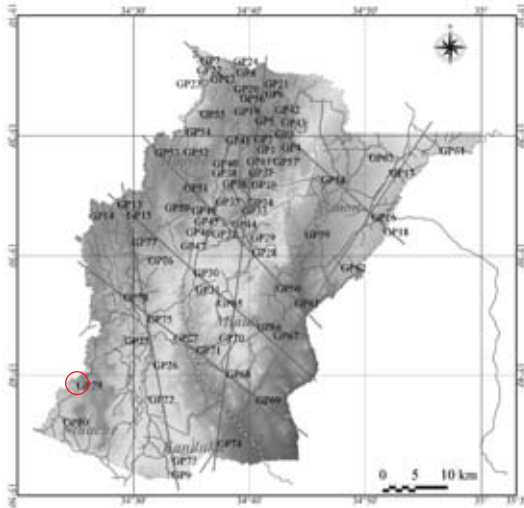


No: GP79

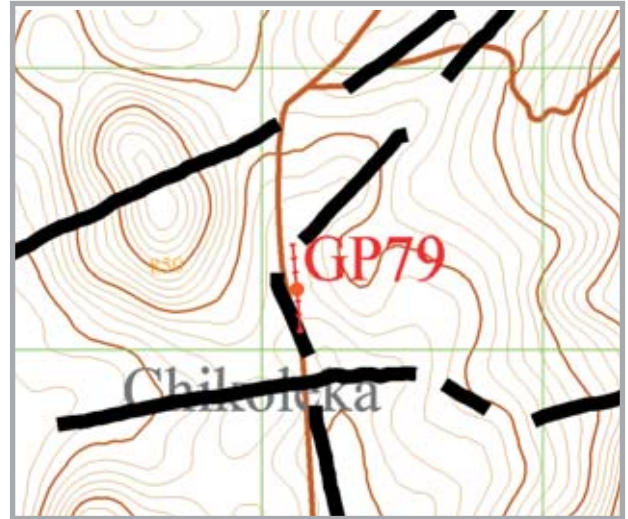
District: Mwanza

Village: Chikoleka

POS(UTM36) N8,266,217m ,E652,125m, Elevation=760m



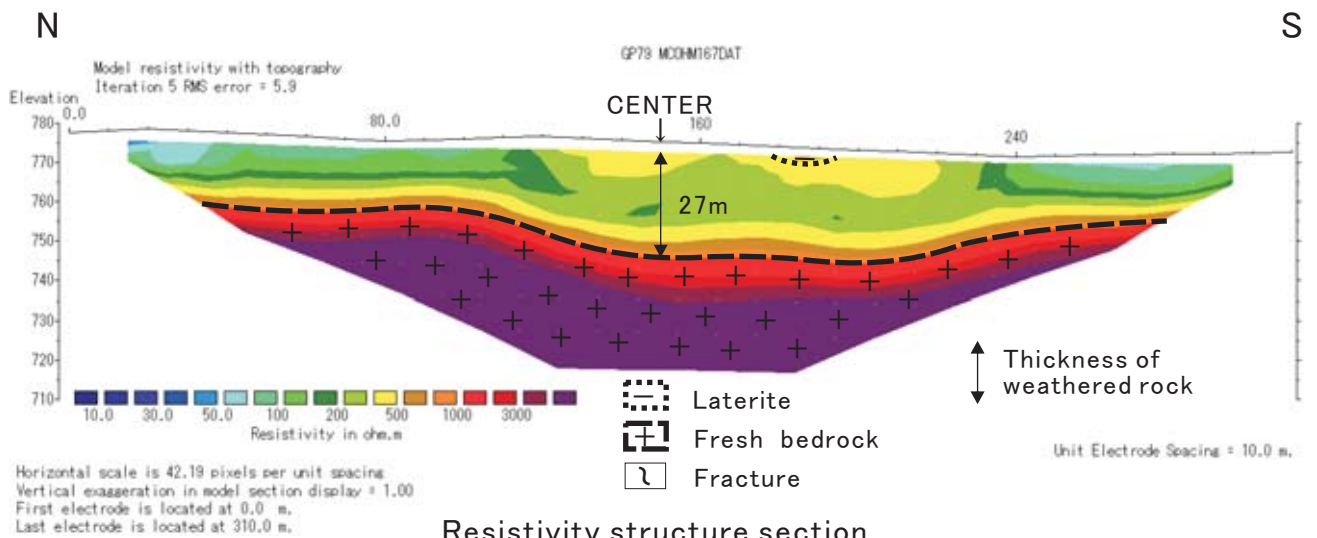
Index map



Location map



Scene of field site



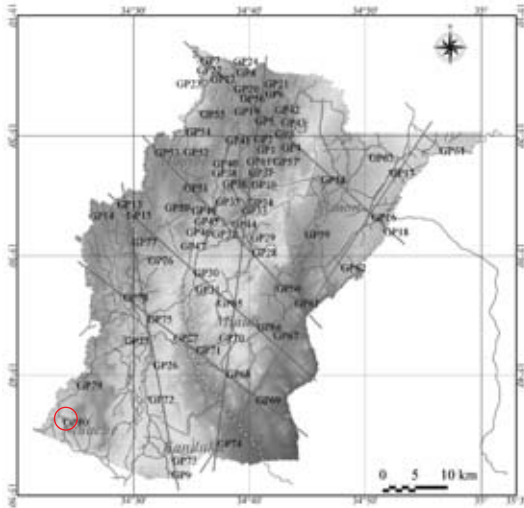


No: GP80

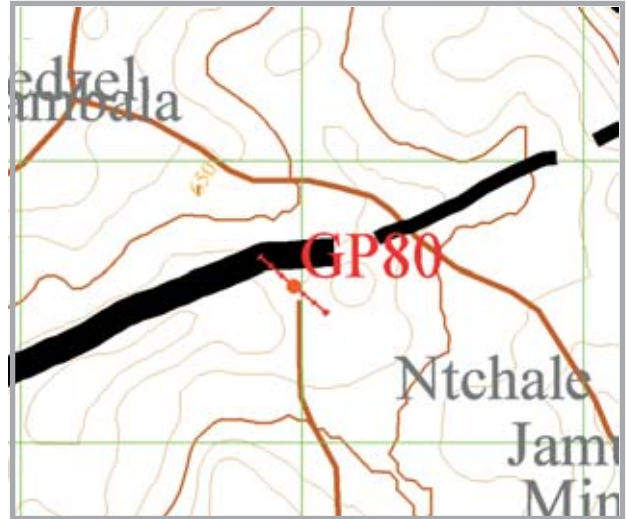
District: Mwanza

Village: Tchale

POS(UTM36) N8,260,559m ,E649,971m, Elevation=630m



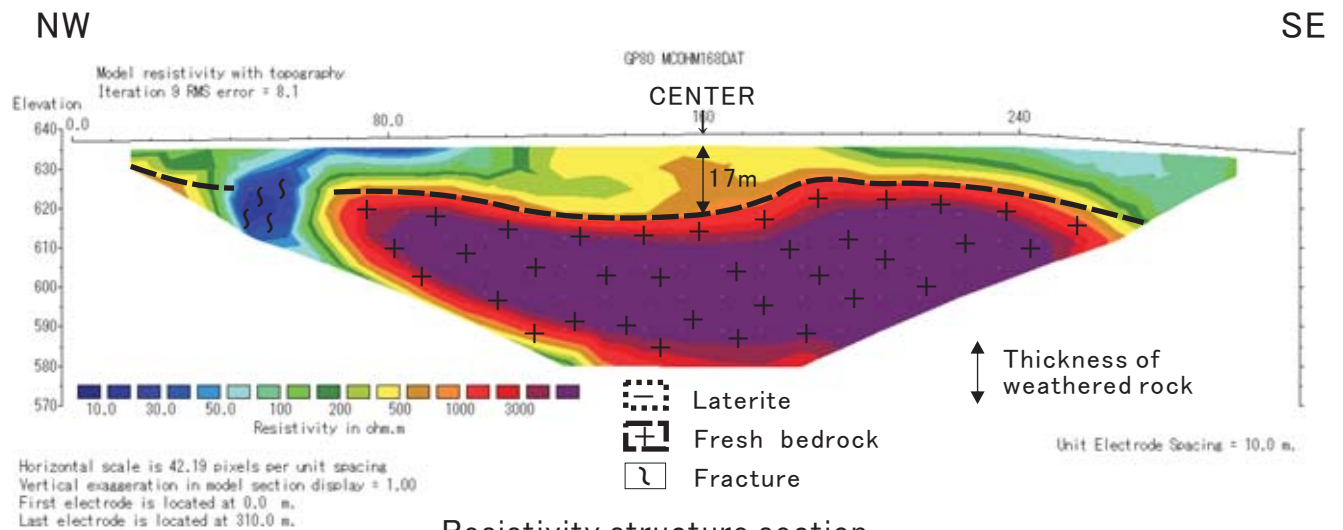
Index map



Location map



Scene of field site



Resistivity structure section