

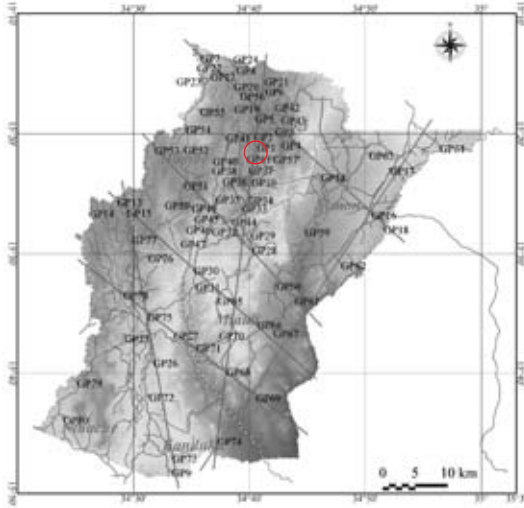
6. 4)-2

No: GP1

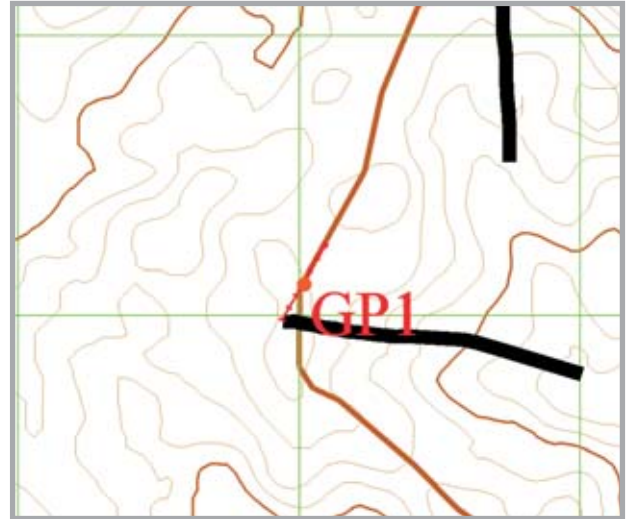
District: Neno

Village: George

POS(UTM36) N8,301,115m ,E680,018m, Elevation=894m



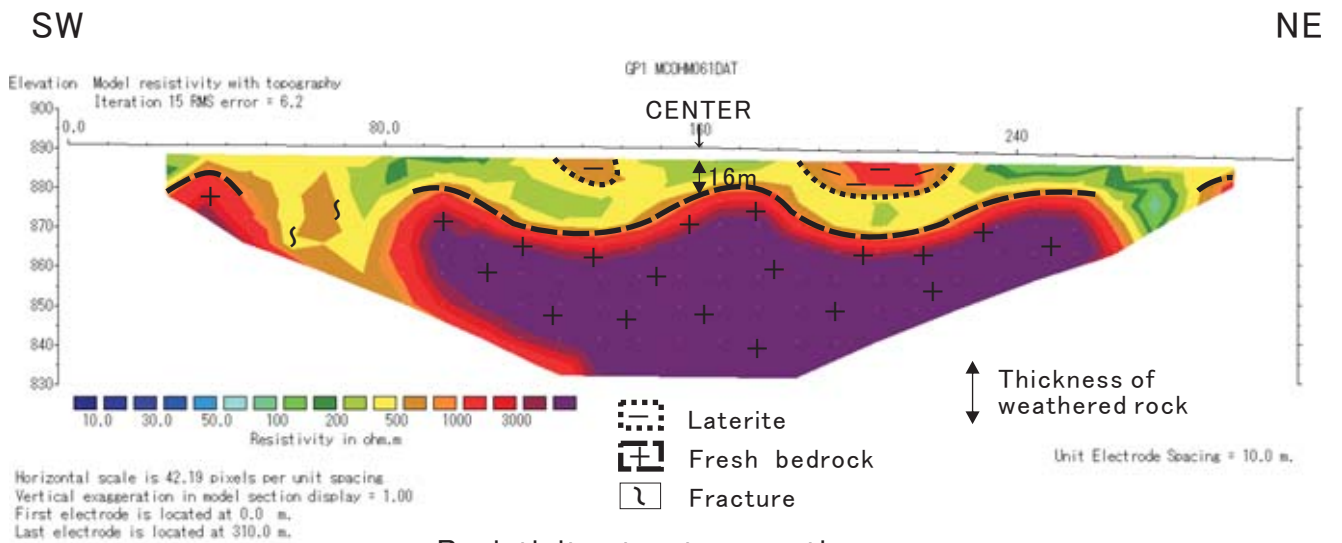
Index map



Location map



Scene of field site



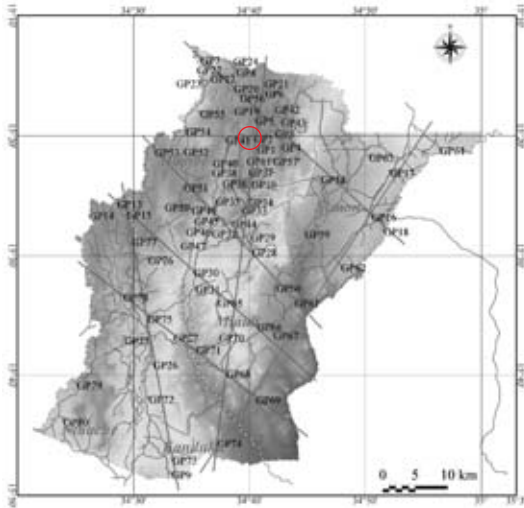
Resistivity structure section

No: GP2

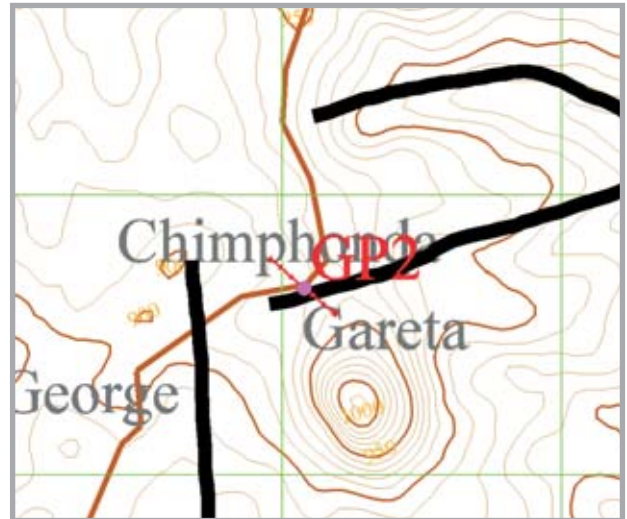
District: Neno

Village: Chimphonda

POS(UTM36) N8,302,670m ,E681,080m, Elevation=924m



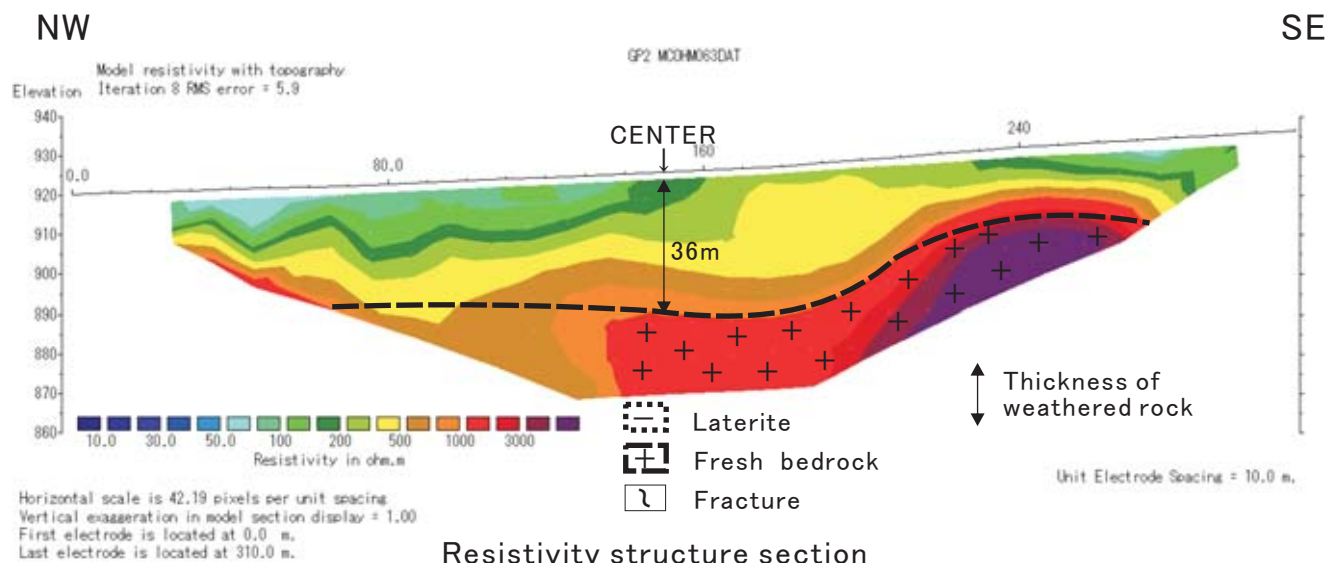
Index map



Location map



Scene of field site



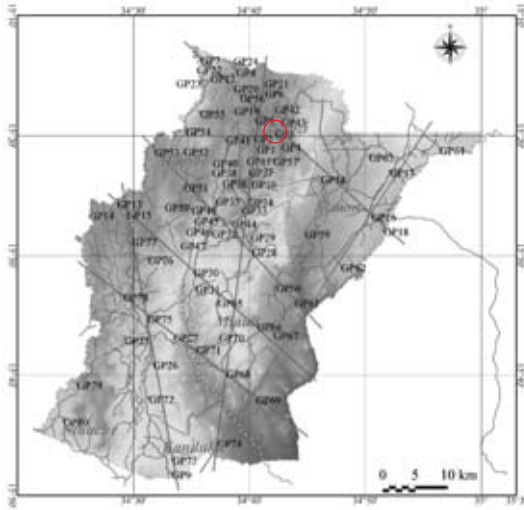
Resistivity structure section

No: GP3

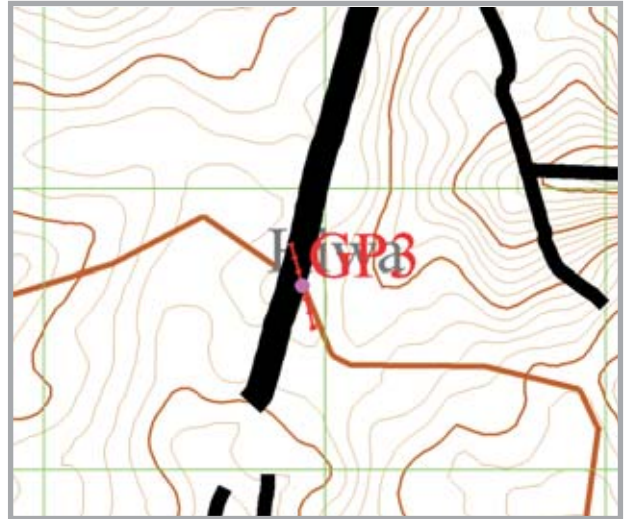
District: Neno

Village: Hiwa

POS(UTM36) N8,304,657m ,E682,919m, Elevation=936m



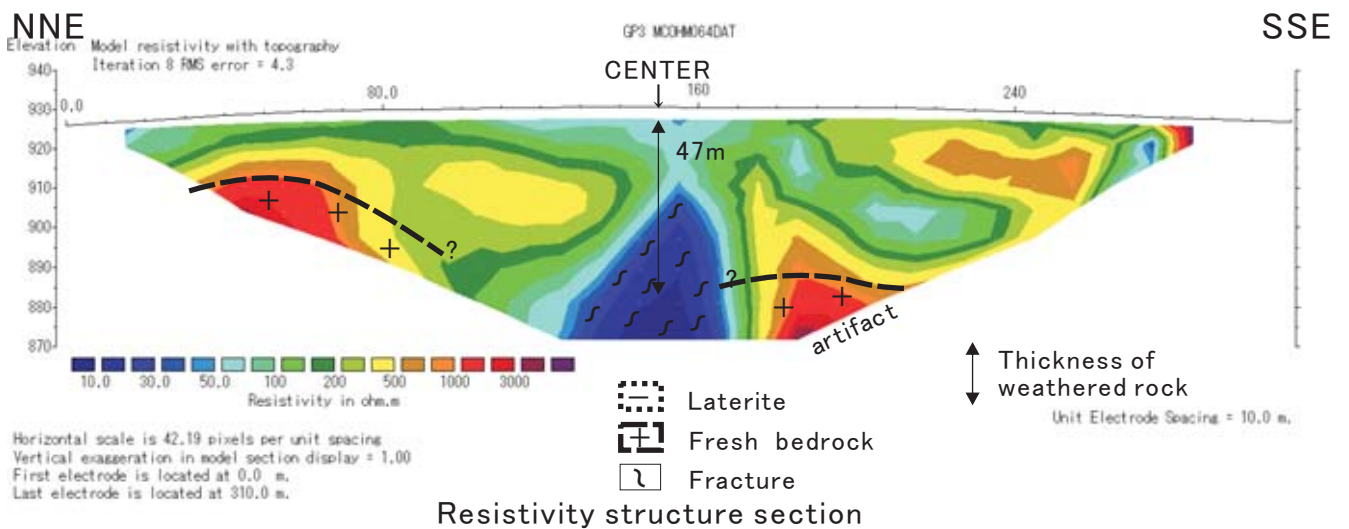
Index map



Location map



Scene of field site

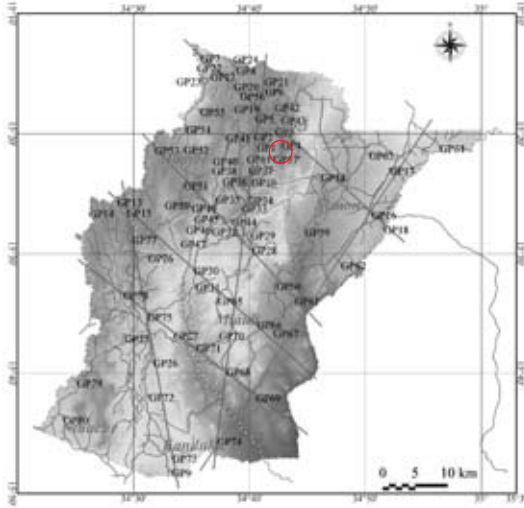


No: GP4

District: Neno

Village: Lumbe I

POS(UTM36) N8,301,407m ,E683,926m, Elevation=972m



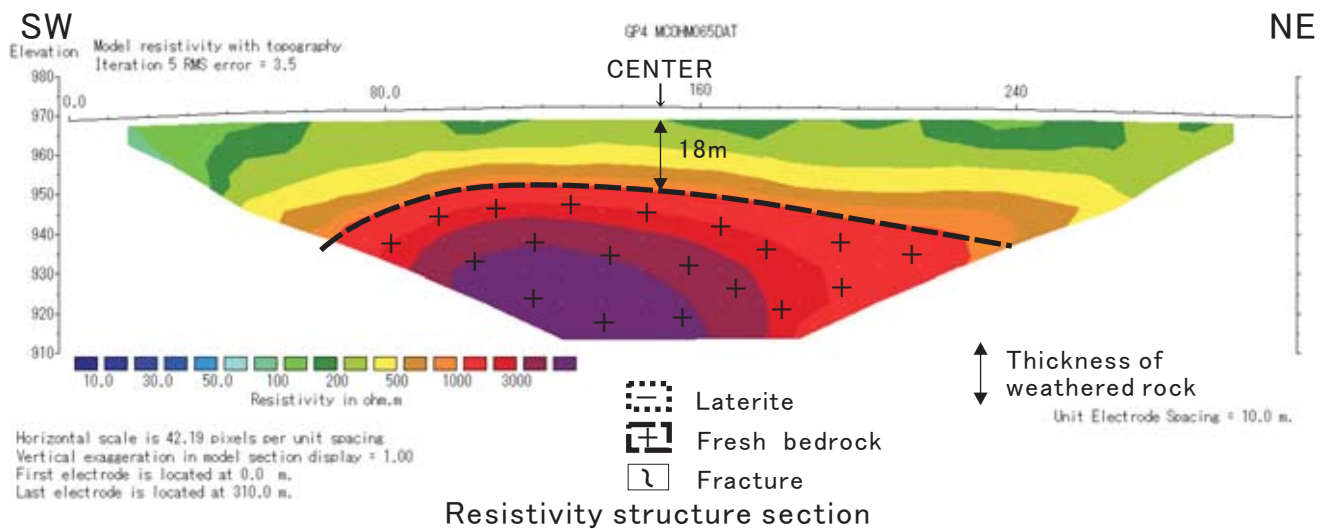
Index map



Location map



Scene of field site

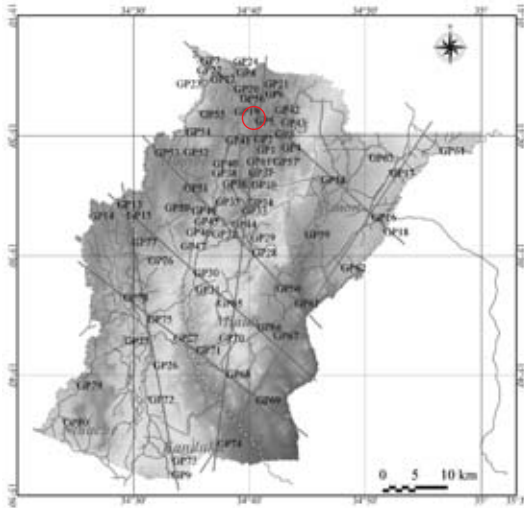


No: GP5

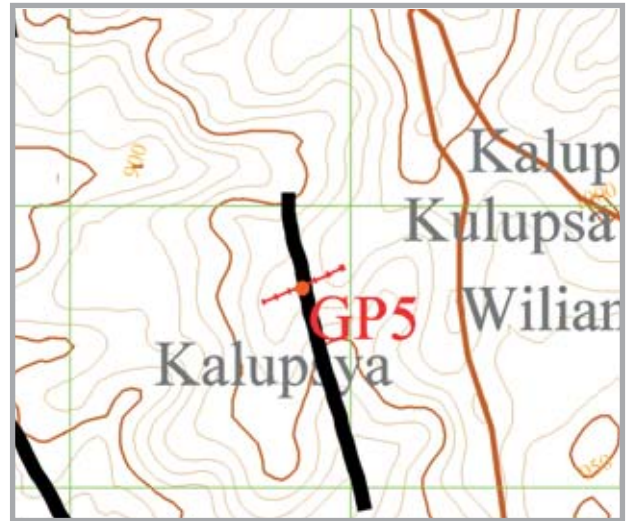
District: Neno

Village: Kalupsya

POS(UTM36) N8,306,712m ,E679,827m, Elevation=984m



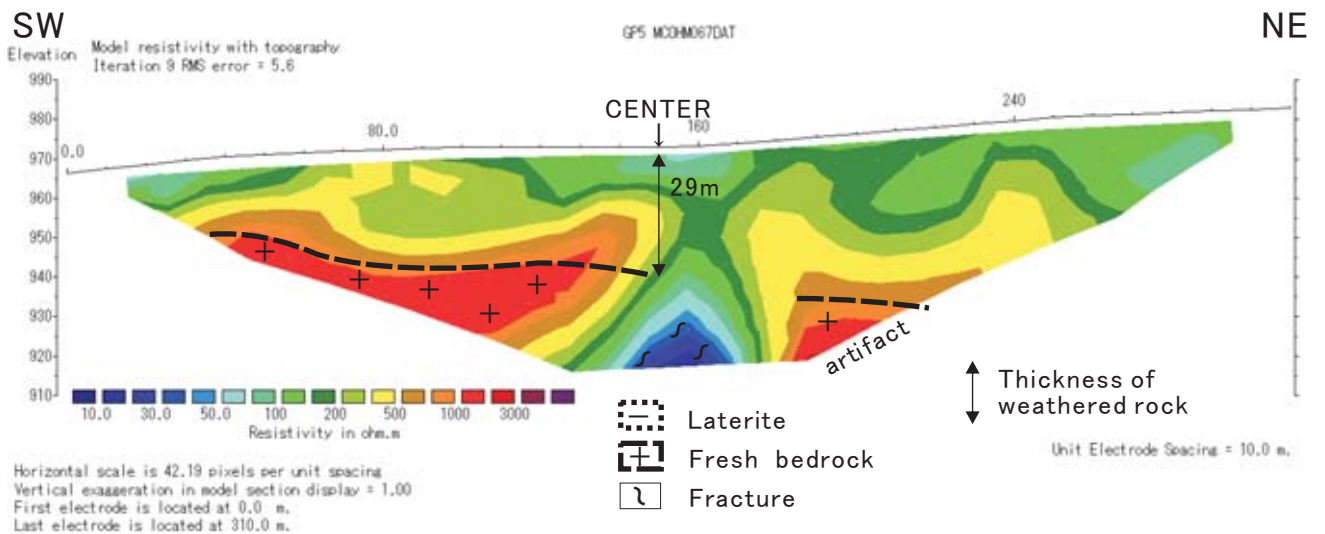
Index map



Location map



Scene of field site



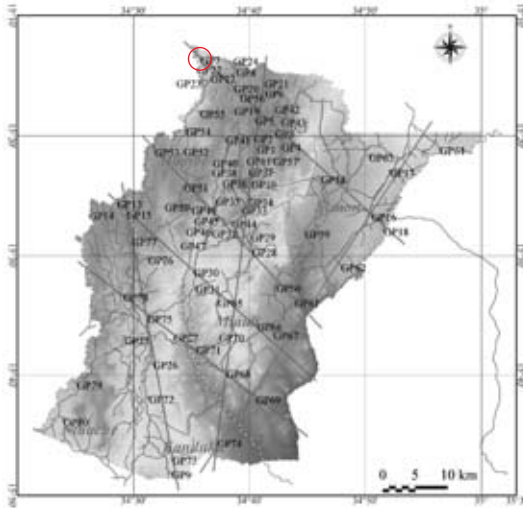
Resistivity structure section

No: GP7

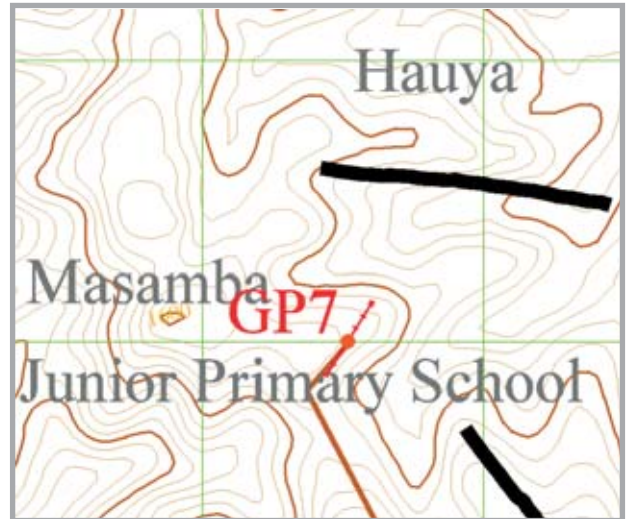
District: Neno

Village: Thava JPS

POS(UTM36) N8,316,002m ,E671,516m, Elevation=1,576m



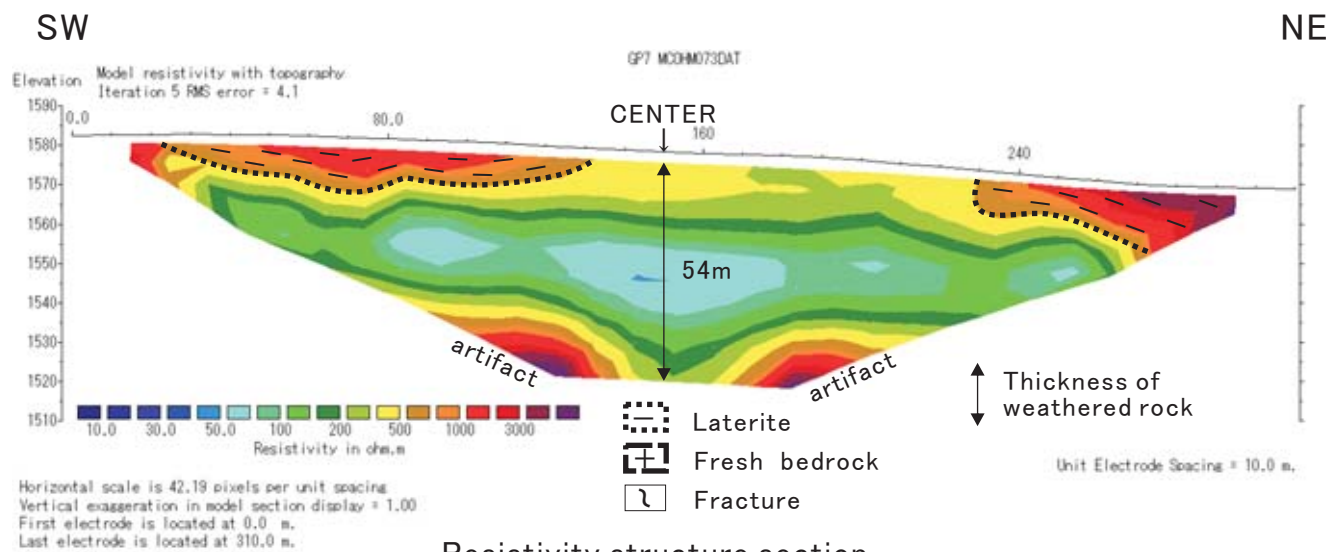
Index map



Location map



Scene of field site



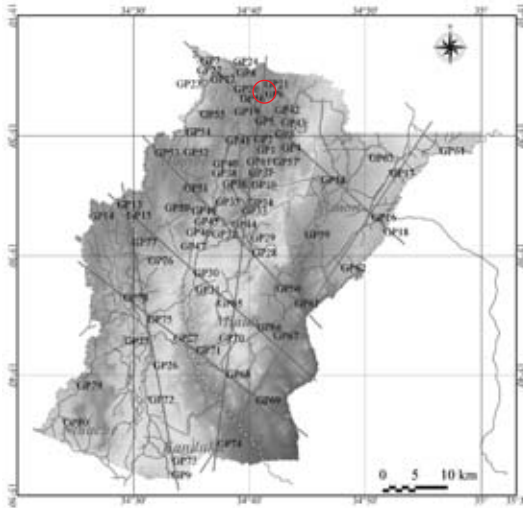
Resistivity structure section

No: GP6

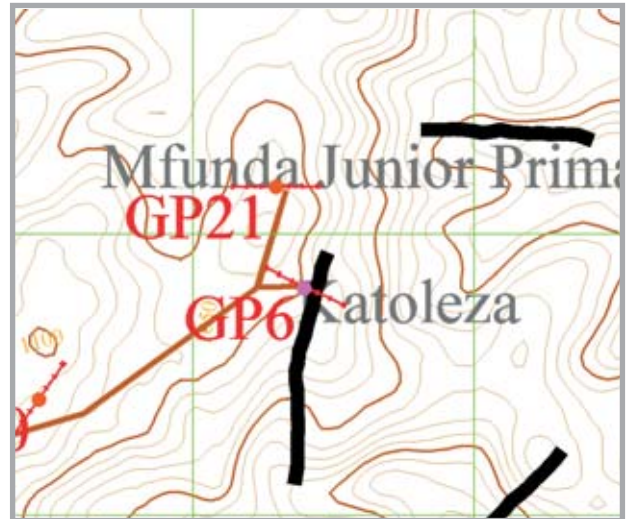
District: Neno

Village: Katoleza

POS(UTM36) N8,310,812m ,E681,396m, Elevation=1,059m



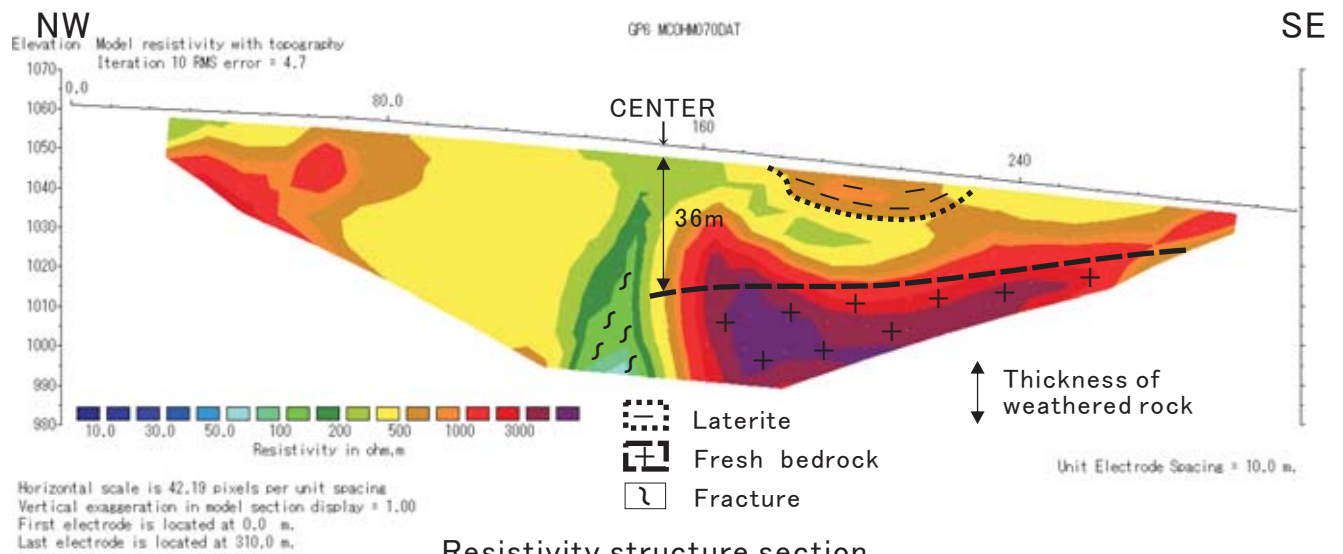
Index map



Location map



Scene of field site



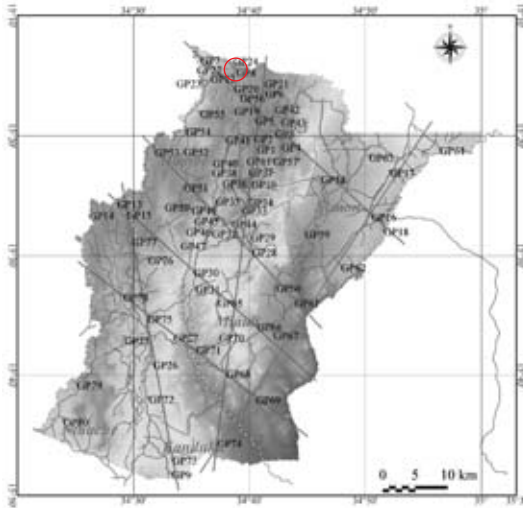
Resistivity structure section

No: GP8

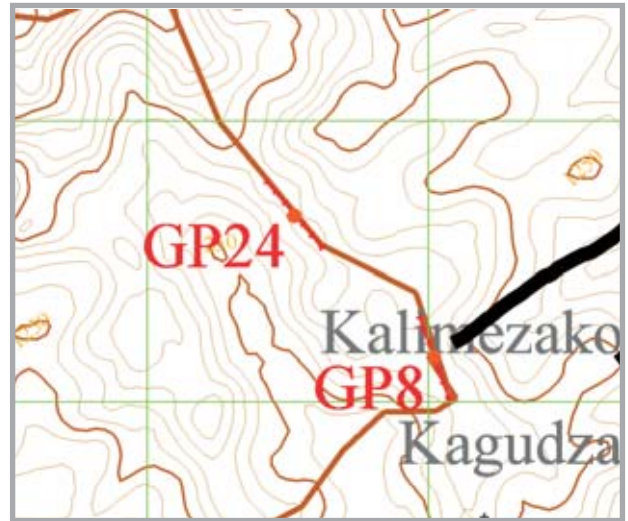
District: Neno

Village: Kalimezako

POS(UTM36) N8,314,159m ,E677,019m, Elevation=1,294m



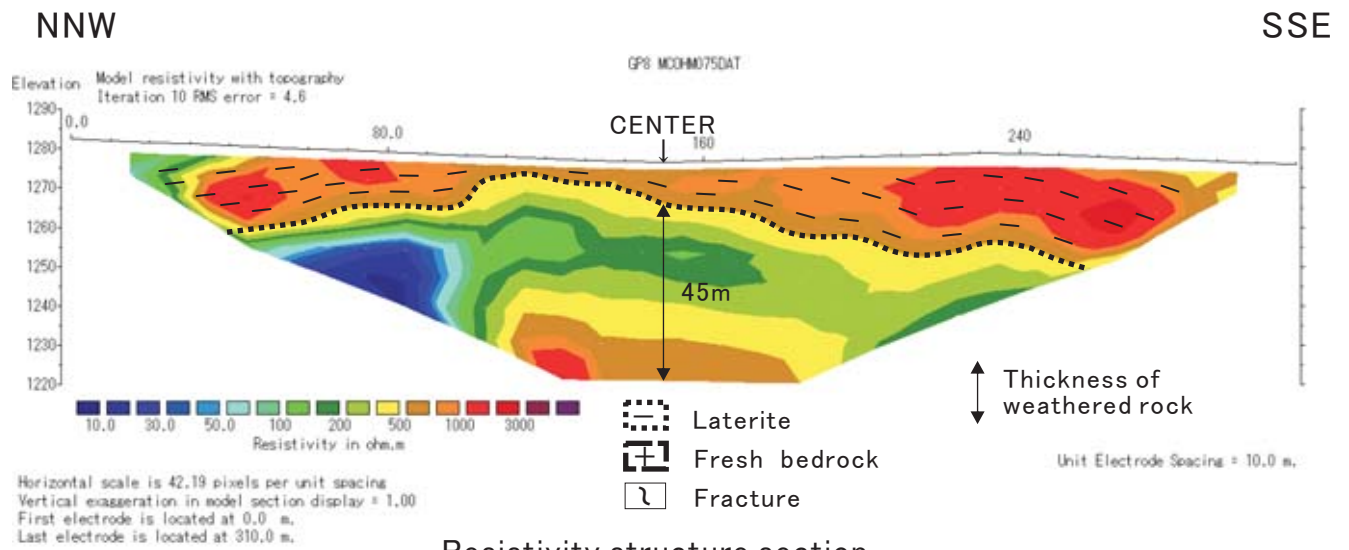
Index map



Location map



Scene of field site

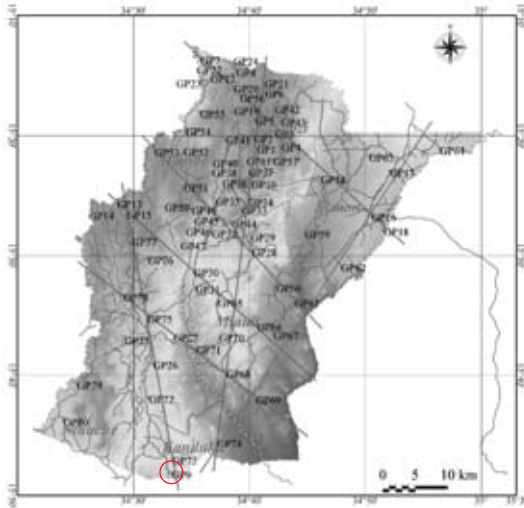


No: GP9

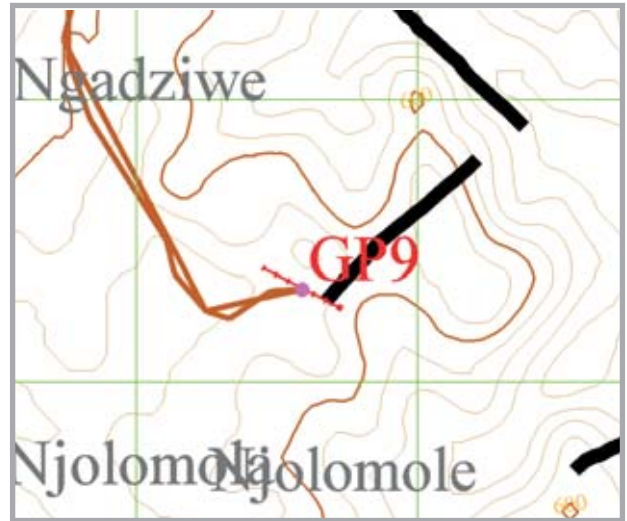
District: Neno

Village: Robatie

POS(UTM36) N8,252,329m ,E666,590m, Elevation=615m



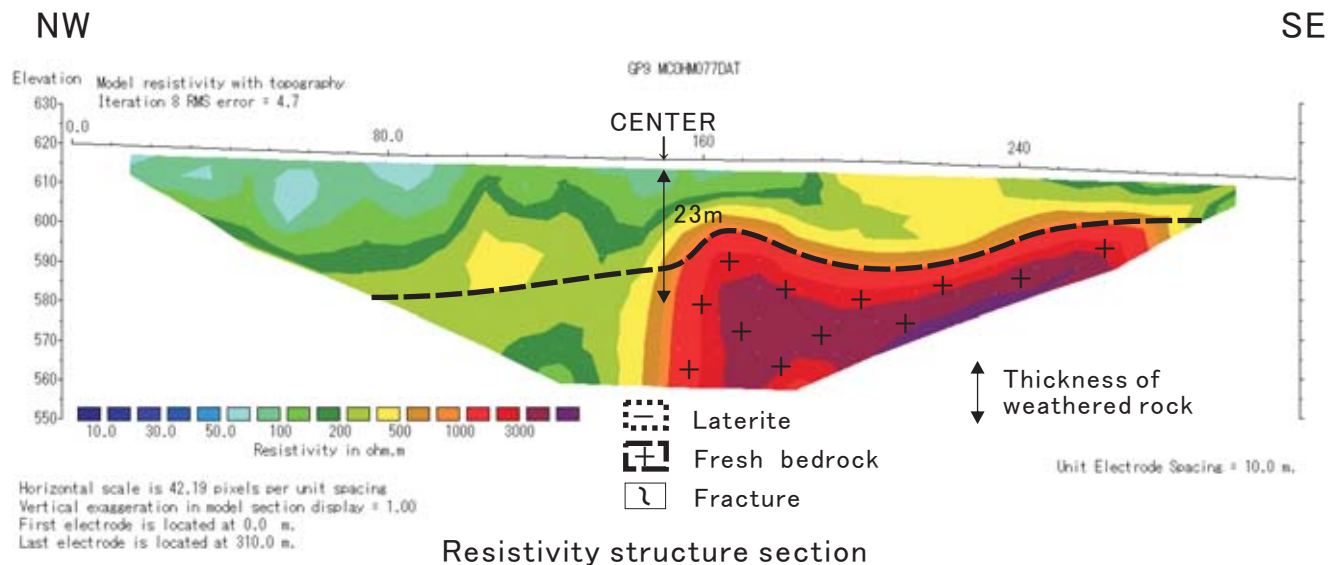
Index map



Location map



Scene of field site

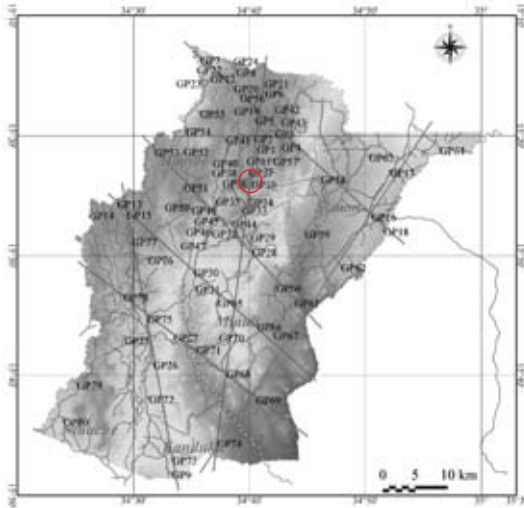


No: GP10

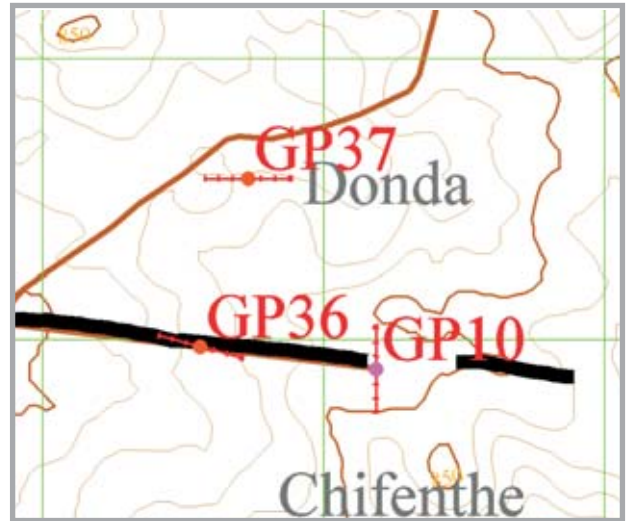
District: Neno

Village: Donda III

POS(UTM36) N8,296,897m ,E679,187m, Elevation=845m



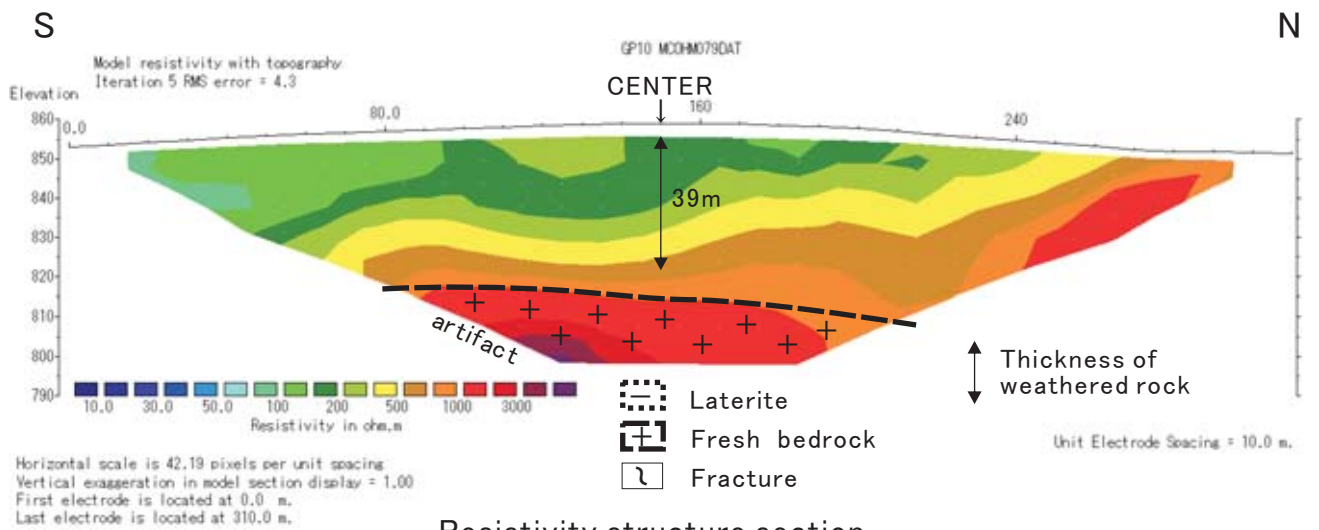
Index map



Location map



Scene of field site



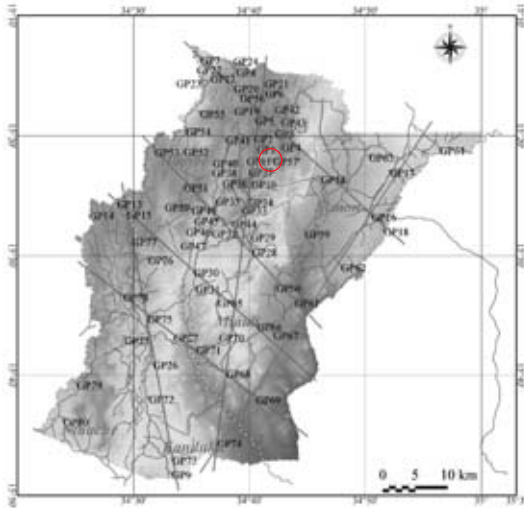
Resistivity structure section

No: GP11

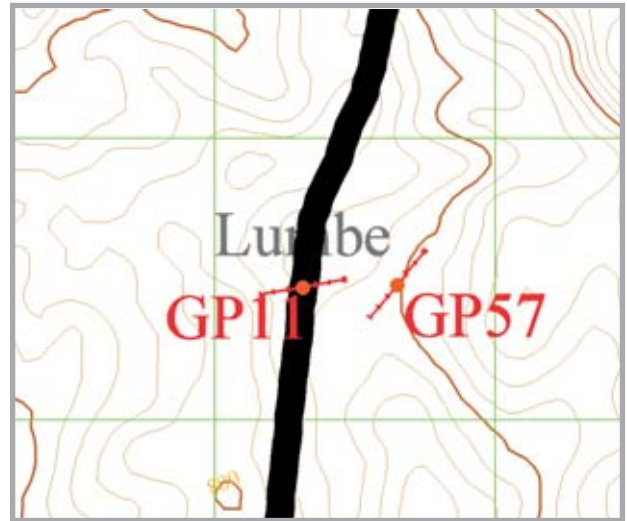
District: Neno

Village: Lumbe III

POS(UTM36) N8,300,472m ,E682,315m, Elevation=842m



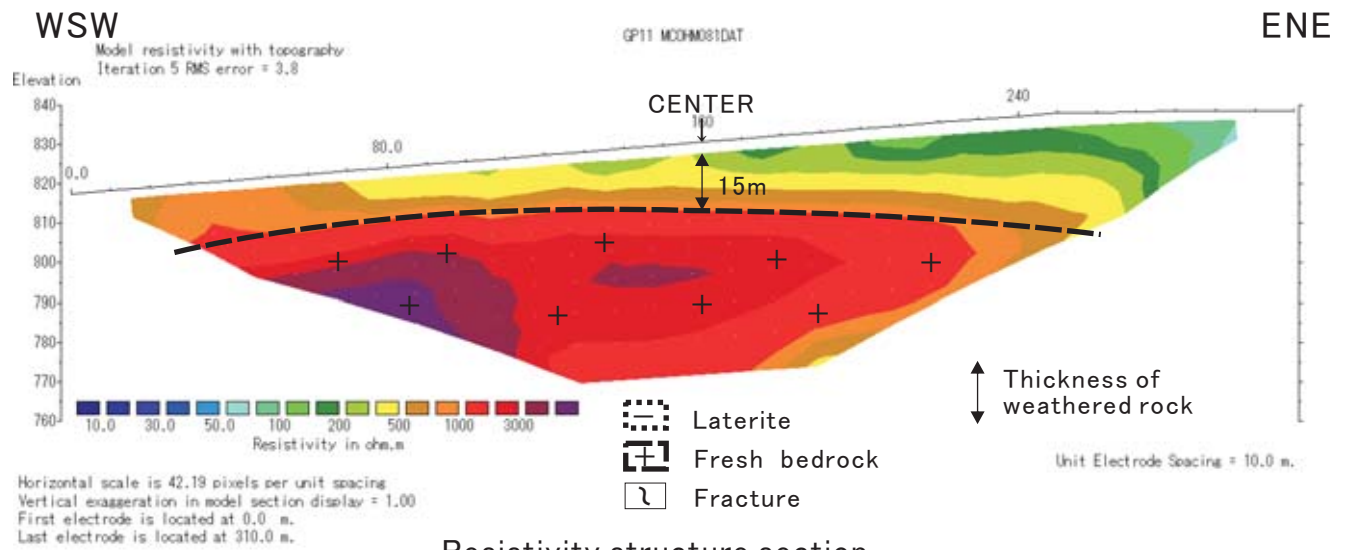
Index map



Location map



Scene of field site



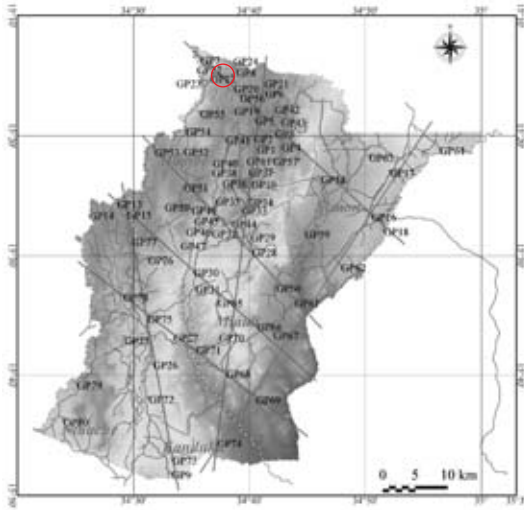
Resistivity structure section

No: GP12

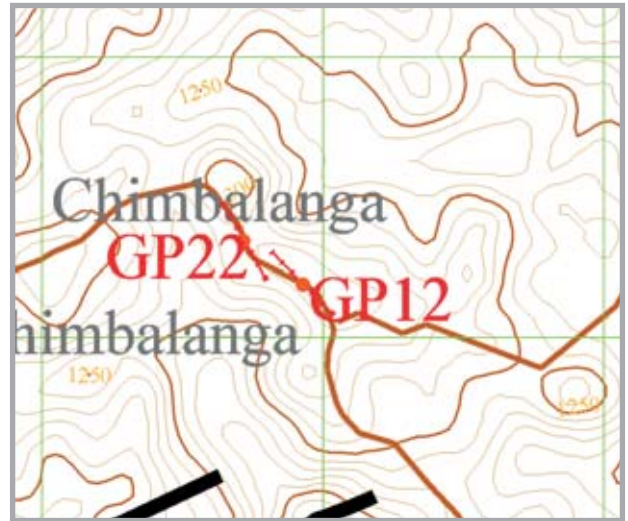
District: Neno

Village: Chimbalanga(N005)

POS(UTM36) N8,313,191m ,E674,929m, Elevation=1,306m



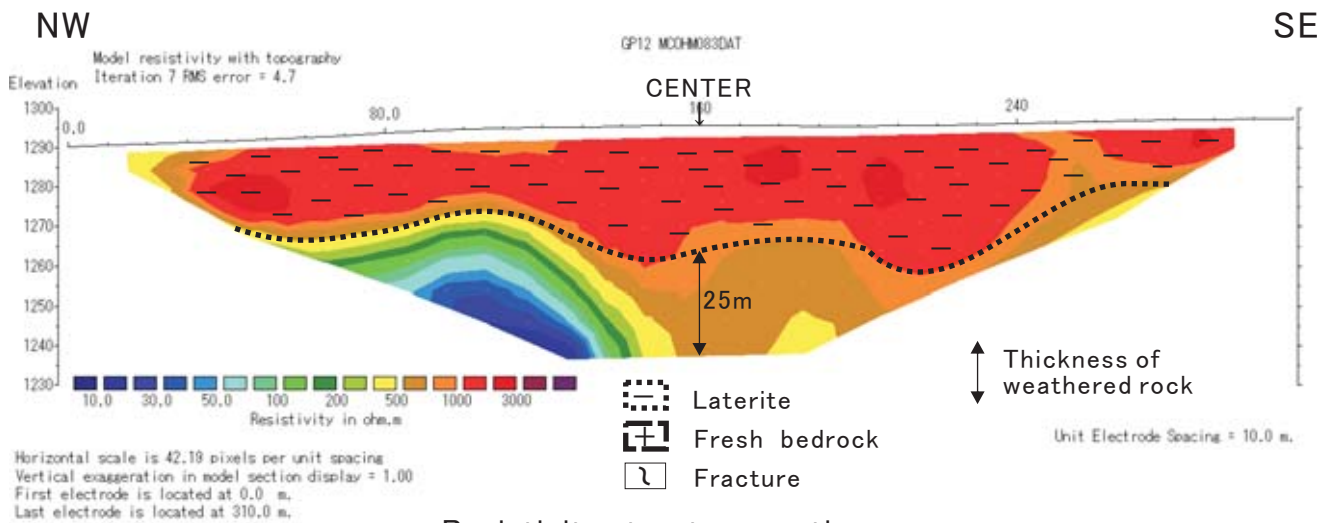
Index map



Location map



Scene of field site



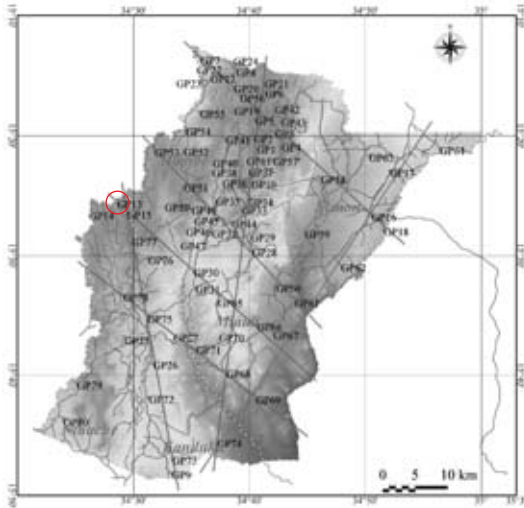
Resistivity structure section

No: GP13

District: Neno

Village: Timvele

POS(UTM36) N8,294,004m ,E658,469m, Elevation=1,114m



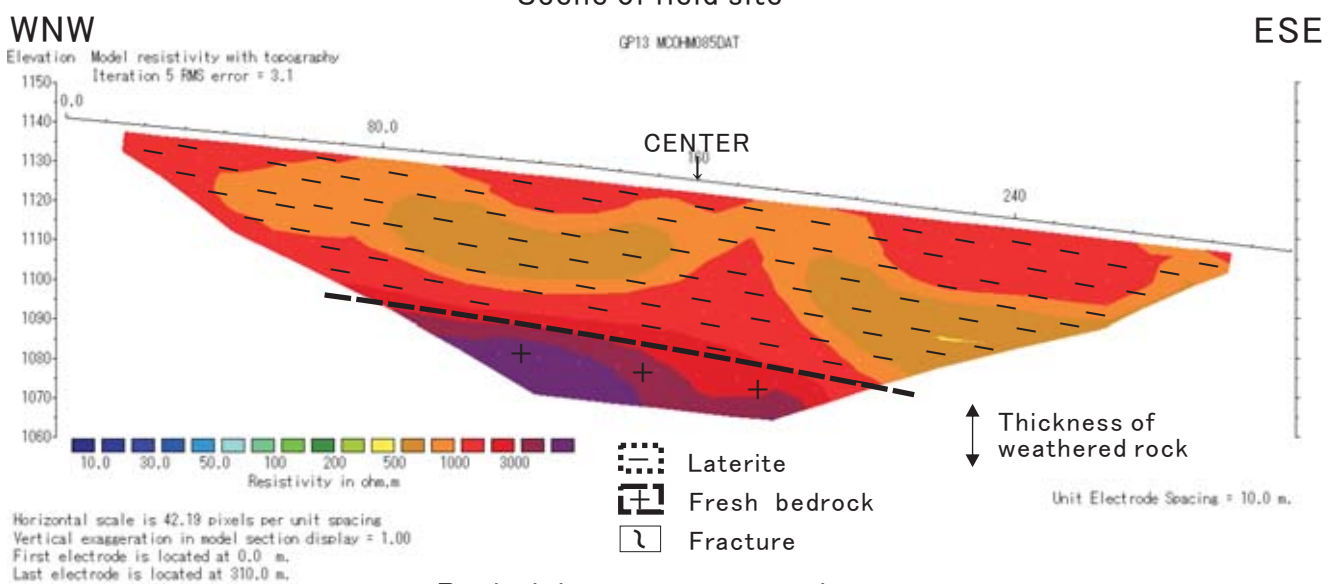
Index map



Location map



Scene of field site



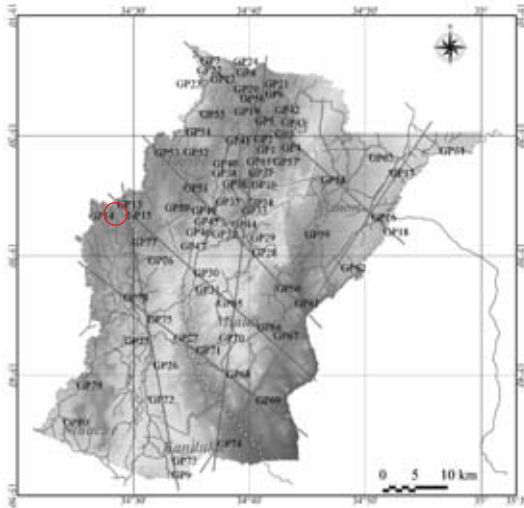
Resistivity structure section

No: GP14

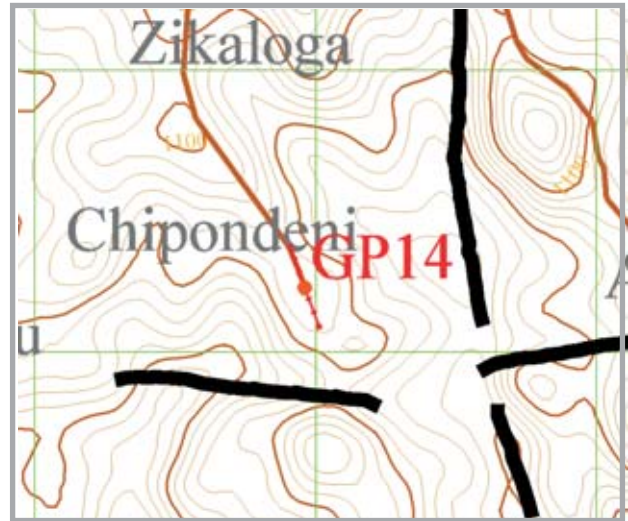
District: Mwanza

Village: Kalimanja(M169)

POS(UTM36) N8,292,230m ,E657,960m, Elevation=1,066m



Index map

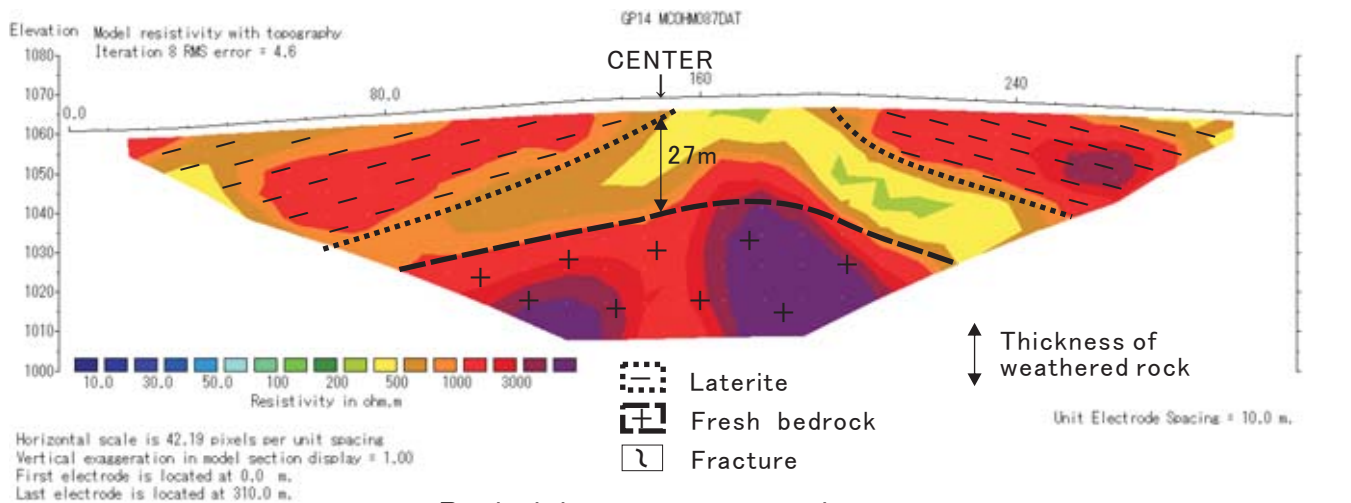


Location map



Scene of field site

NNW



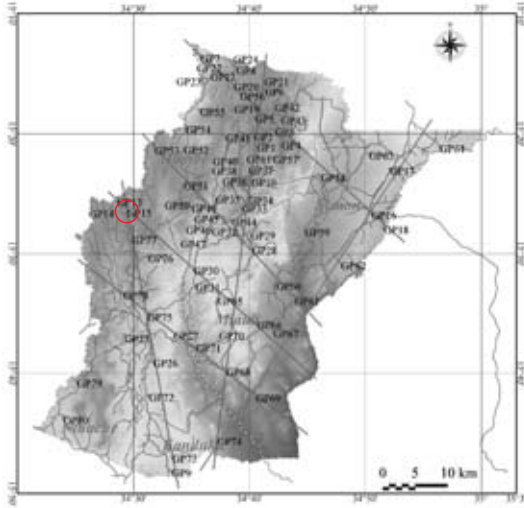
Resistivity structure section

No: GP15

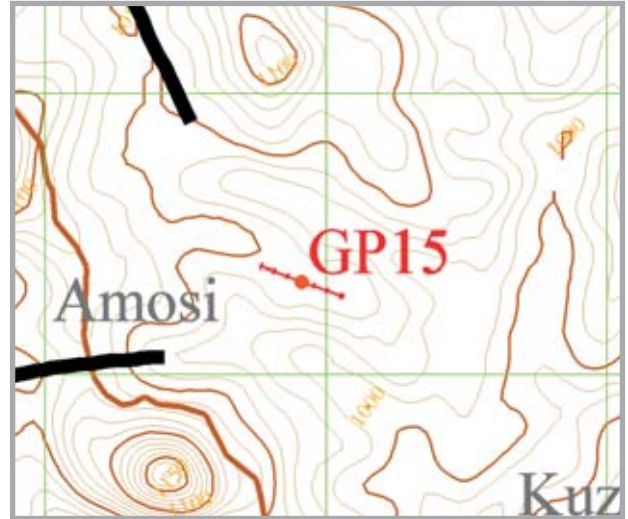
District: Mwanza

Village: Amosi

POS(UTM36) N8,292,330m ,E659,912m, Elevation=1,038m



Index map

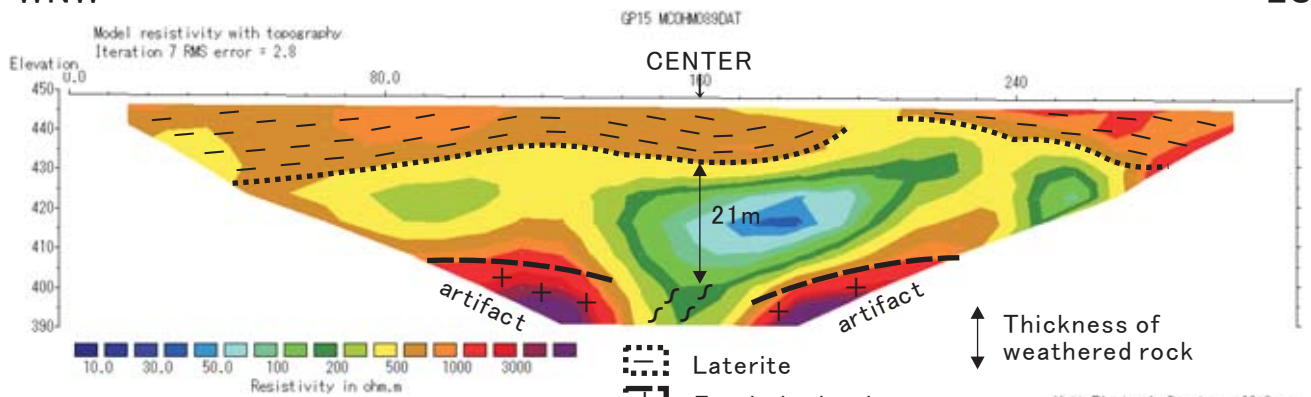


Location map



Scene of field site

WNW



Horizontal scale is 42.19 pixels per unit spacing
Vertical exaggeration in model section display = 1.00
First electrode is located at 0.0 m.
Last electrode is located at 310.0 m.

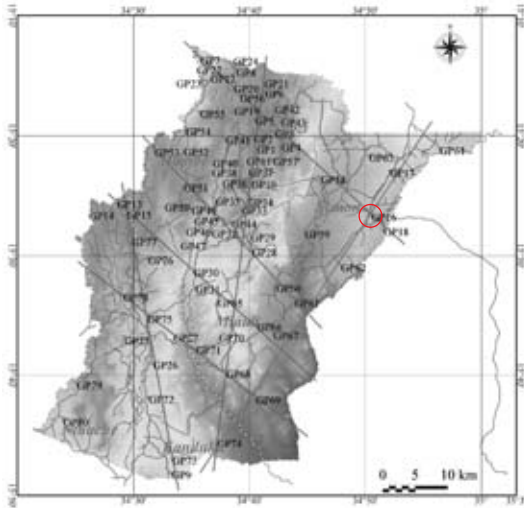
Resistivity structure section

No: GP16

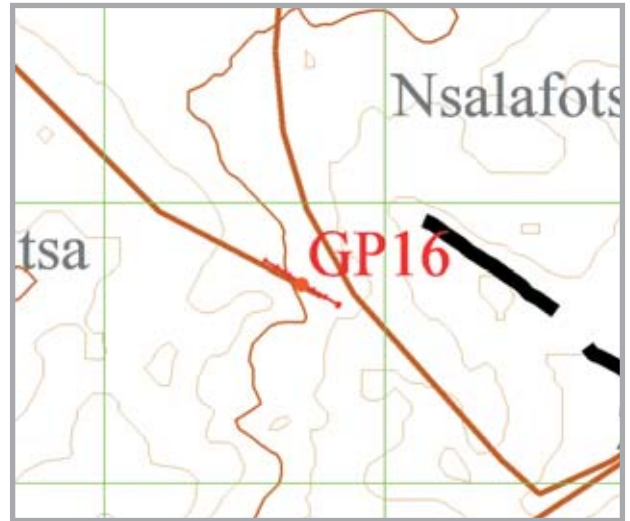
District: Neno

Village: Zalewa

POS(UTM36) N8,291,713m ,E697,703m, Elevation=450m



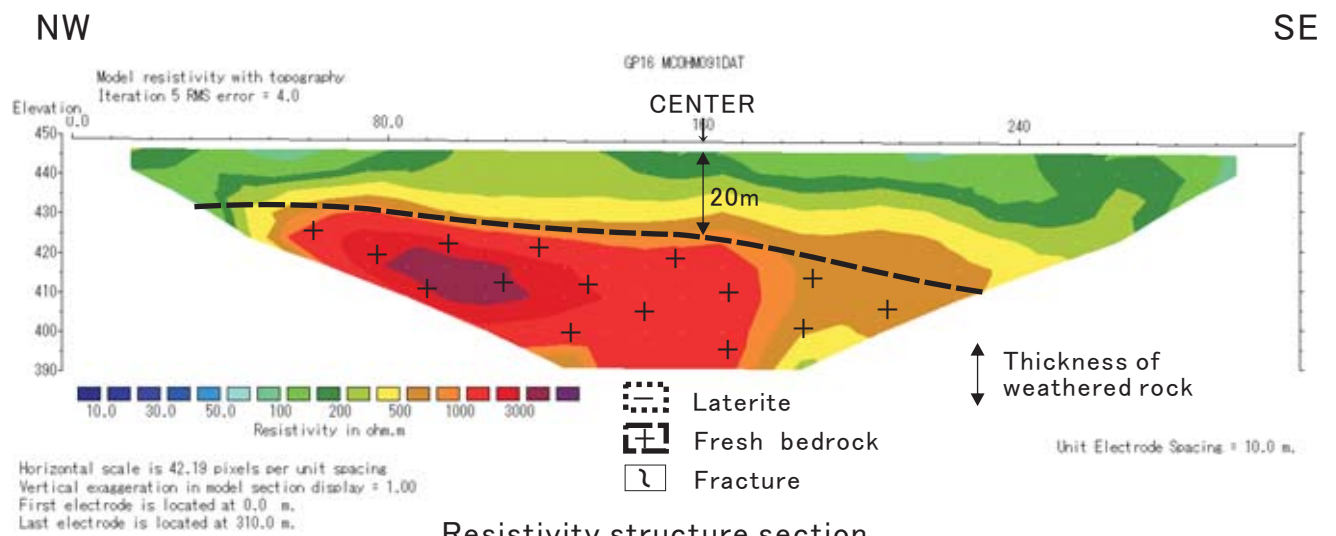
Index map



Location map



Scene of field site



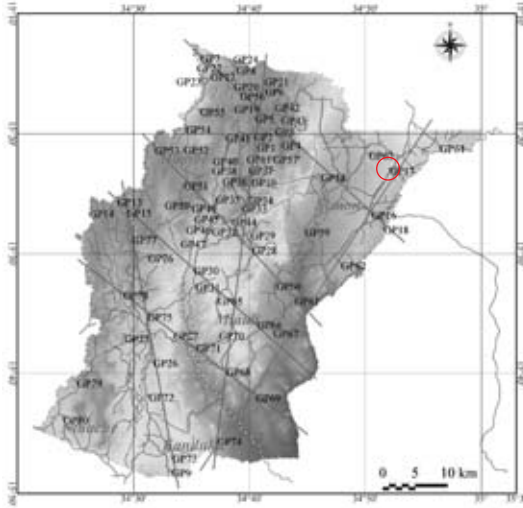
Resistivity structure section

No: GP17

District: Neno

Village: Phokos

POS(UTM36) N8,298,490m ,E700,558m, Elevation=476m



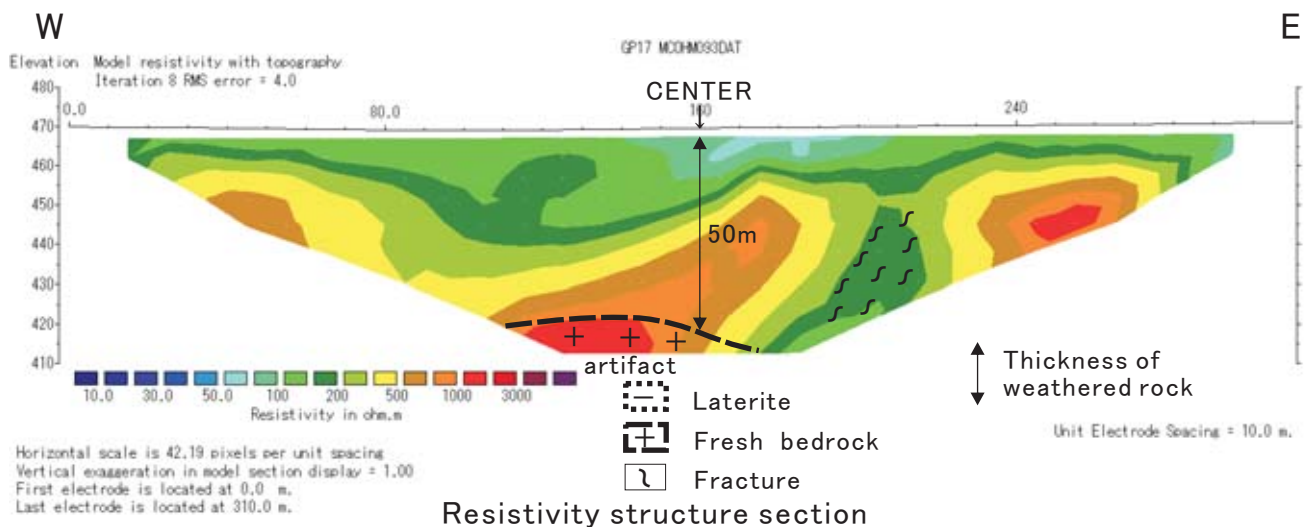
Index map



Location map



Scene of field site



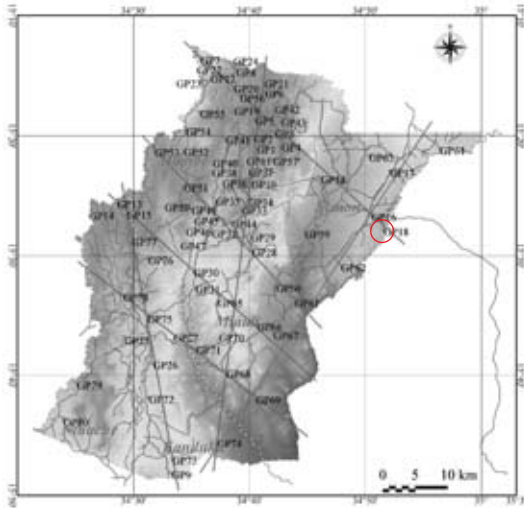
Resistivity structure section

No: GP18

District: Neno

Village: Chinyezi(N202)

POS(UTM36) N8,289,450m ,E699,575m, Elevation=388m



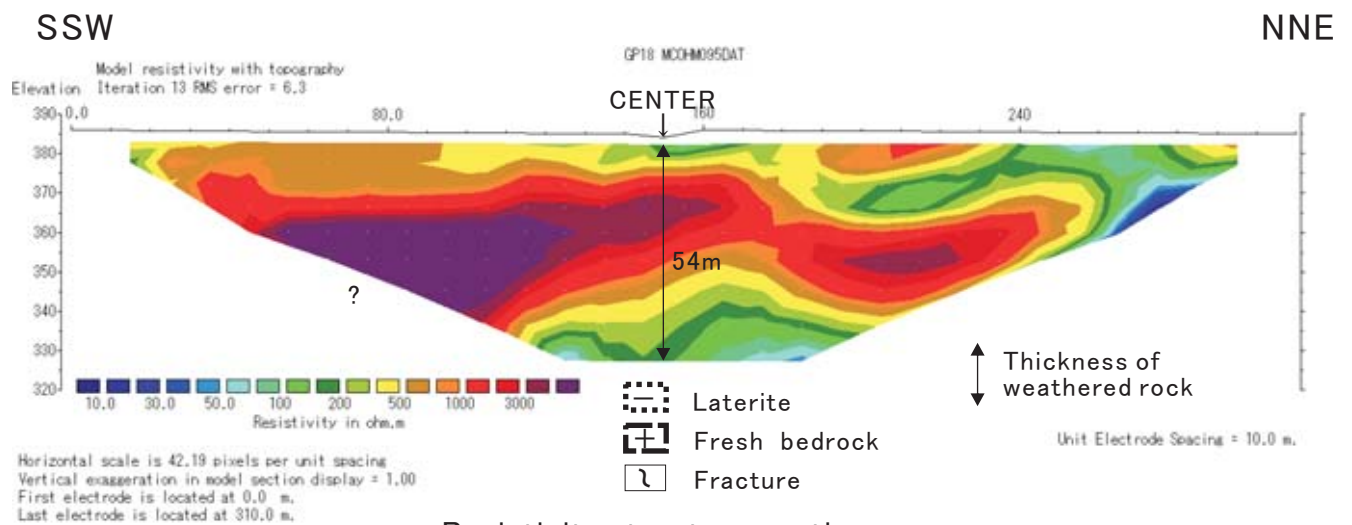
Index map



Location map



Scene of field site



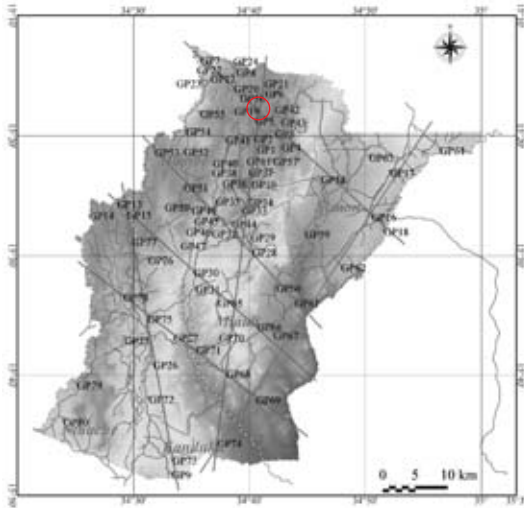
Resistivity structure section

No: GP19

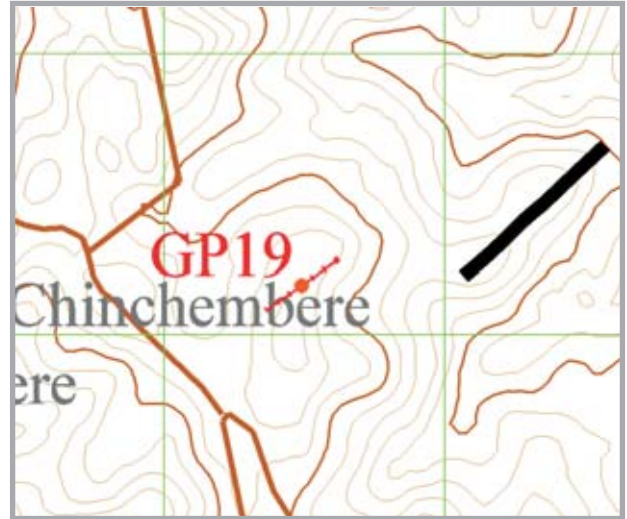
District: Neno

Village: Chinchembere

POS(UTM36) N8,308,177m ,E680,491m, Elevation=1,034m



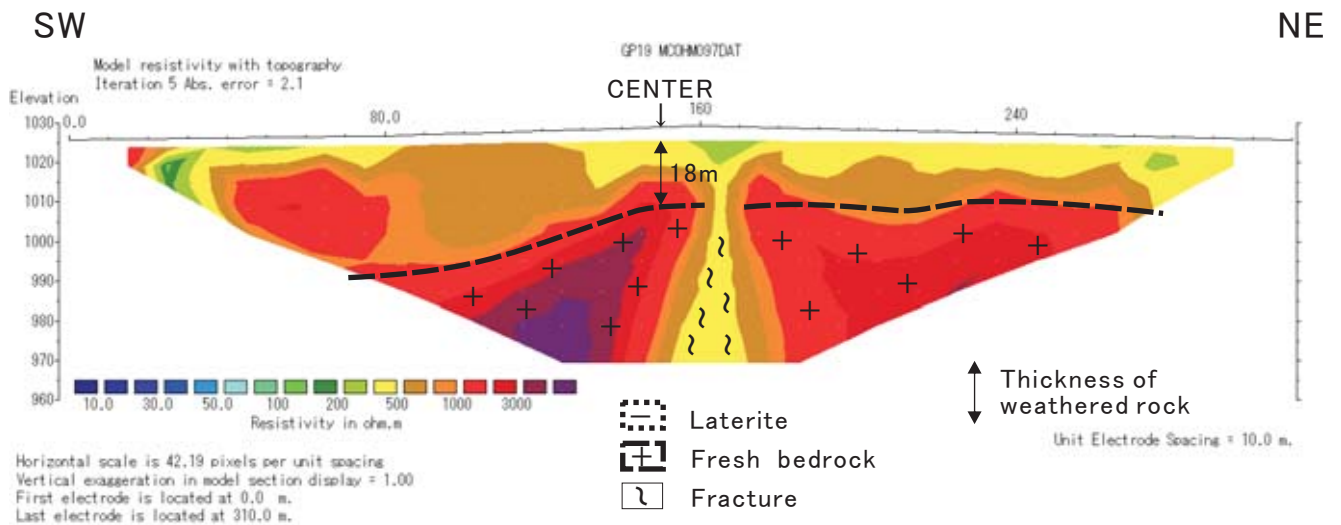
Index map



Location map



Scene of field site



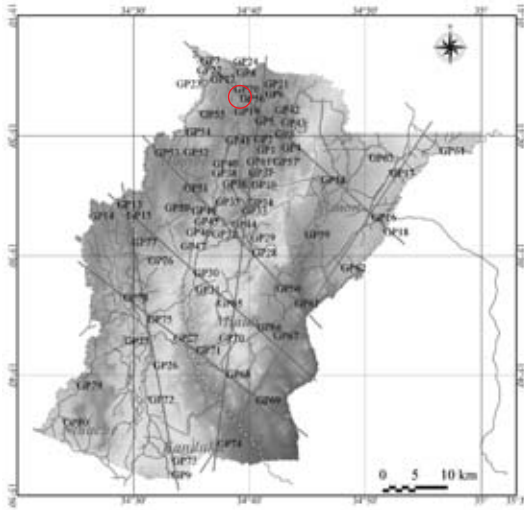
Resistivity structure section

No: GP20

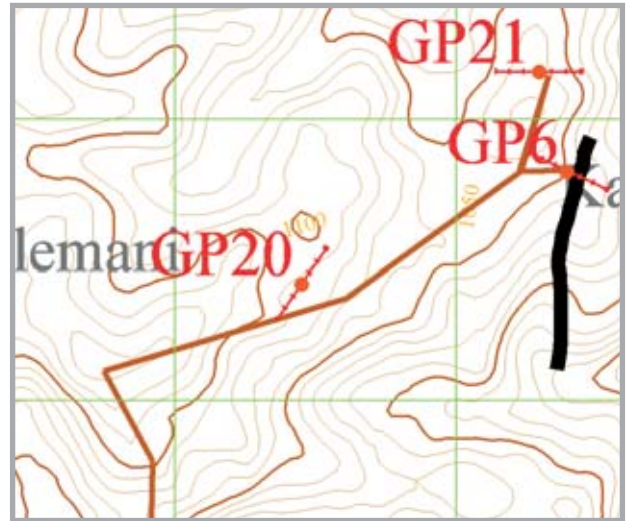
District: Neno

Village: Selamani

POS(UTM36) N8,310,414m ,E680,451m, Elevation=1,103m



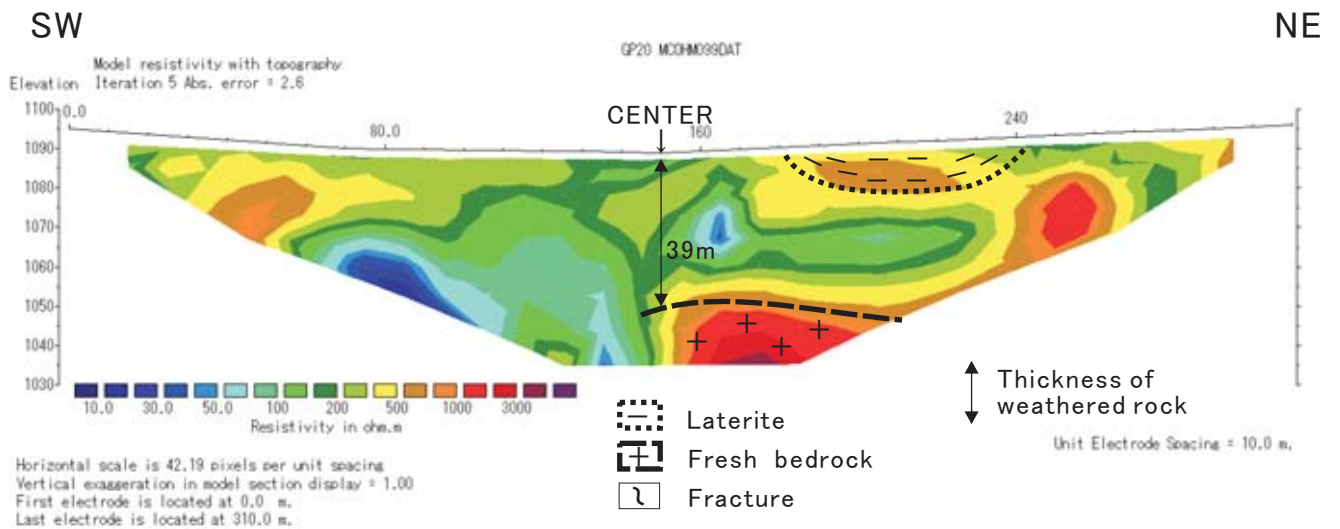
Index map



Location map



Scene of field site



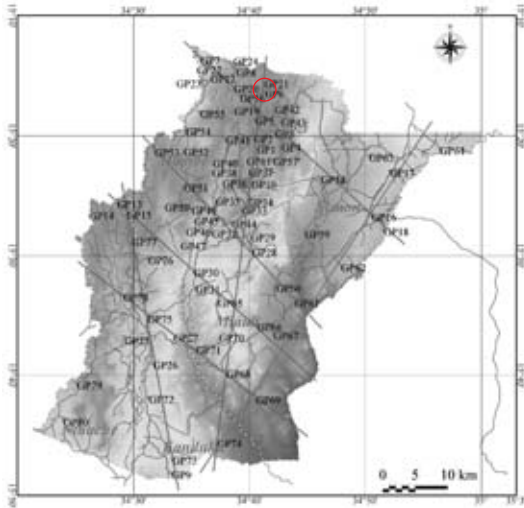
Resistivity structure section

No: GP21

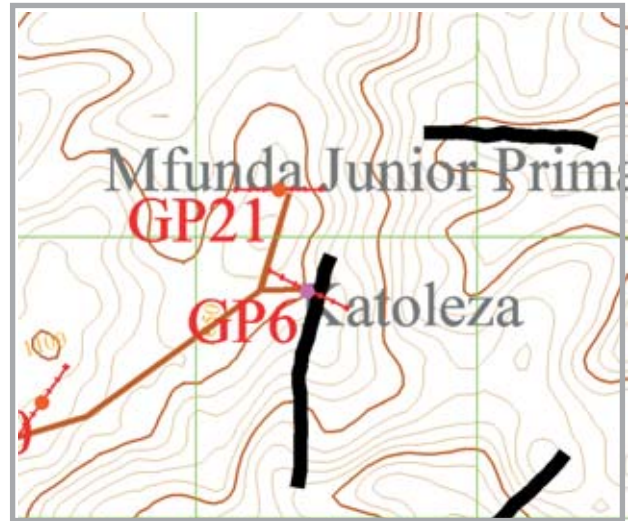
District: Neno

Village: Mfunda JPS

POS(UTM36) N8,311,170m ,E681,296m, Elevation=1,075m



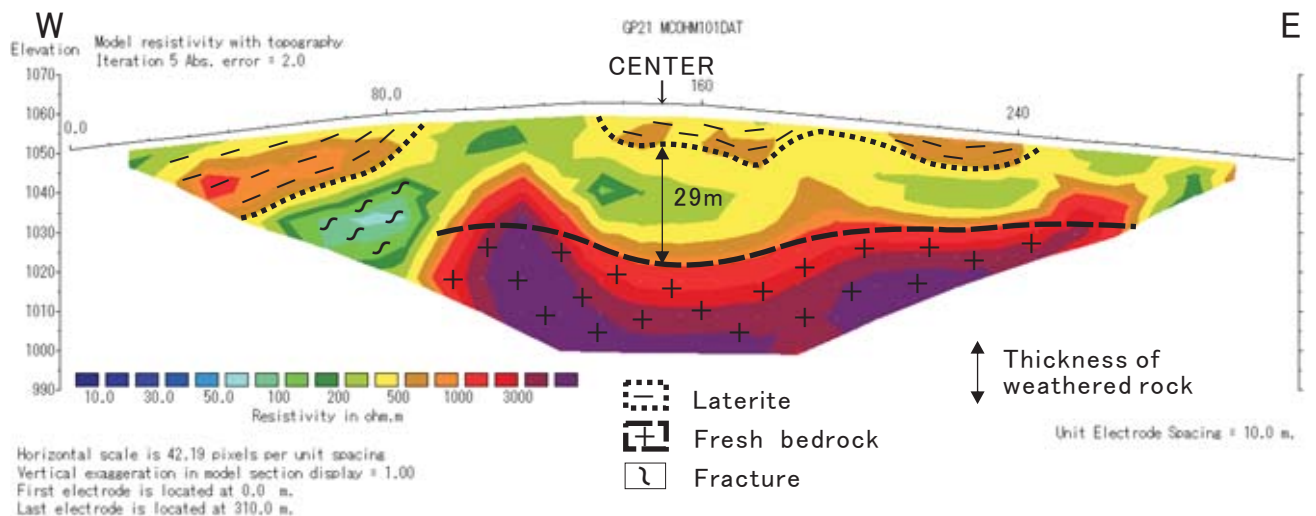
Index map



Location map



Scene of field site



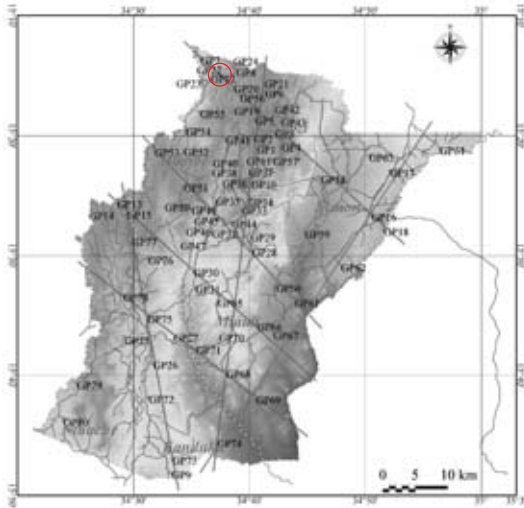
Resistivity structure section

No: GP22

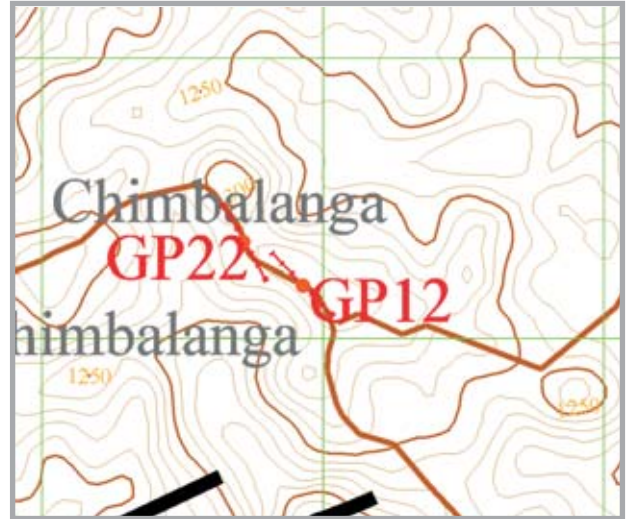
District: Neno

Village: Chimbalanga

POS(UTM36) N8,313,342m ,E674,717m, Elevation=1,291m



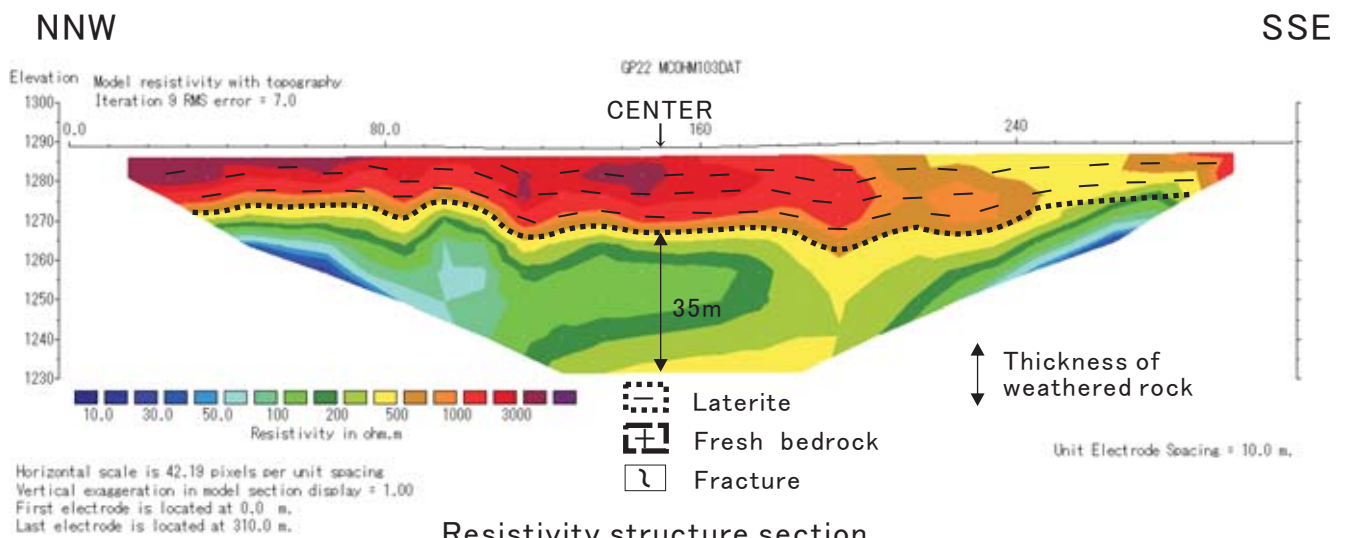
Index map



Location map



Scene of field site



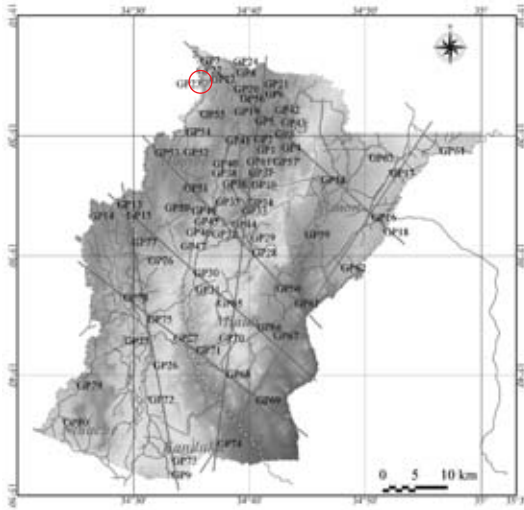
Resistivity structure section

No: GP23

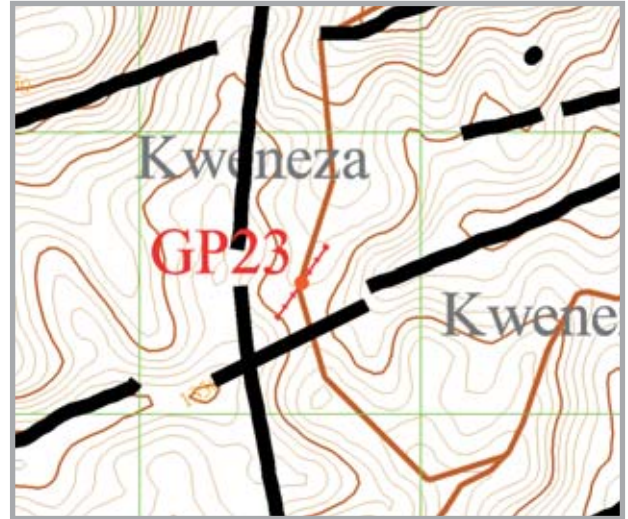
District: Neno

Village: Kwenza

POS(UTM36) N8,312,470m ,E671,576m, Elevation=1,415m



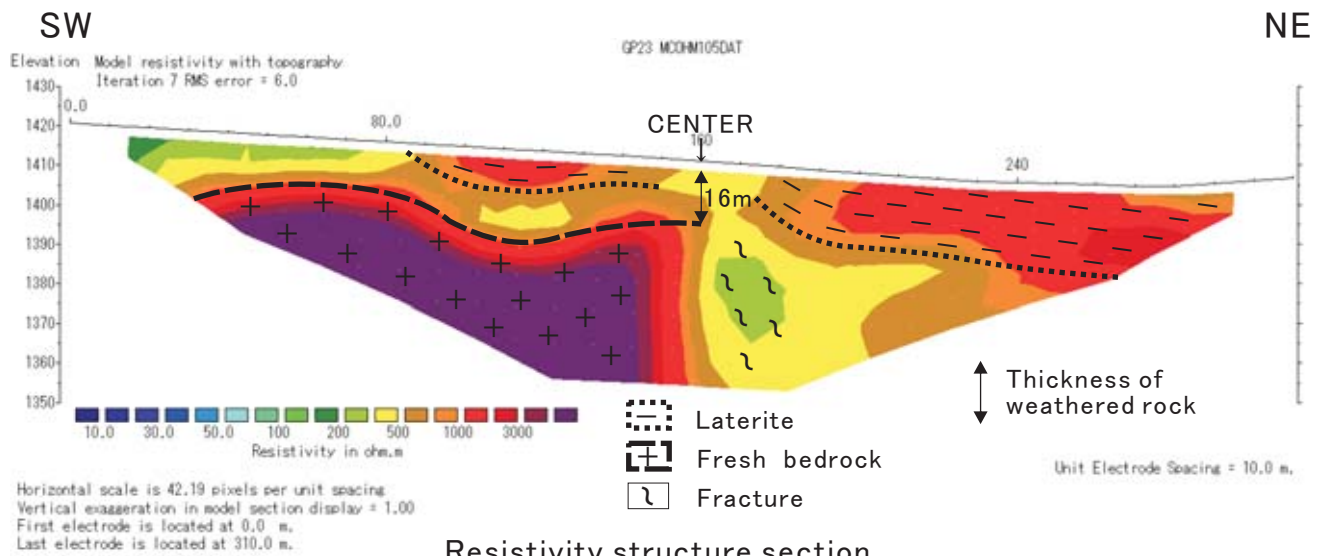
Index map



Location map



Scene of field site



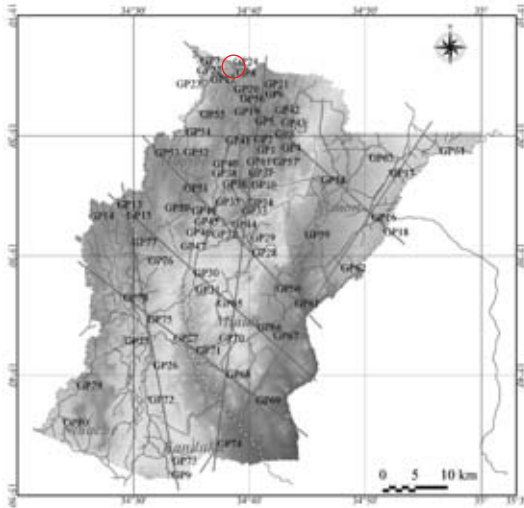
Resistivity structure section

No: GP24

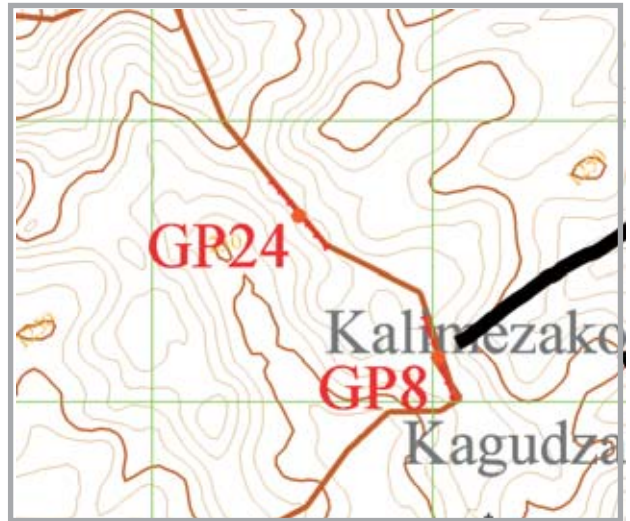
District: Neno

Village: Chimbalanga II

POS(UTM36) N8,314,663m ,E676,523m, Elevation=1,305m



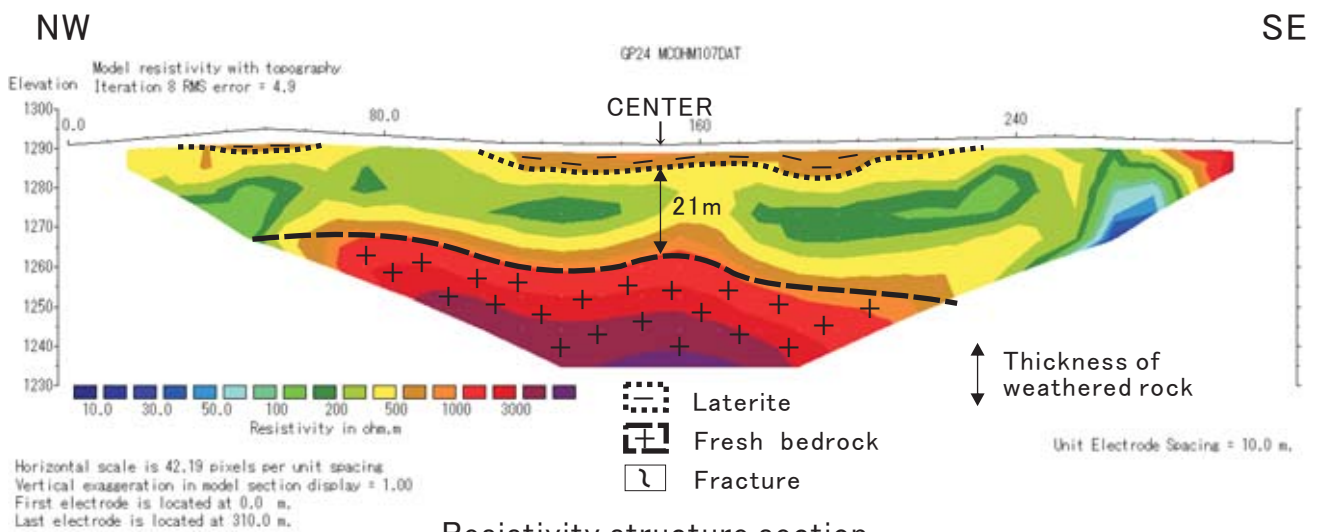
Index map



Location map



Scene of field site



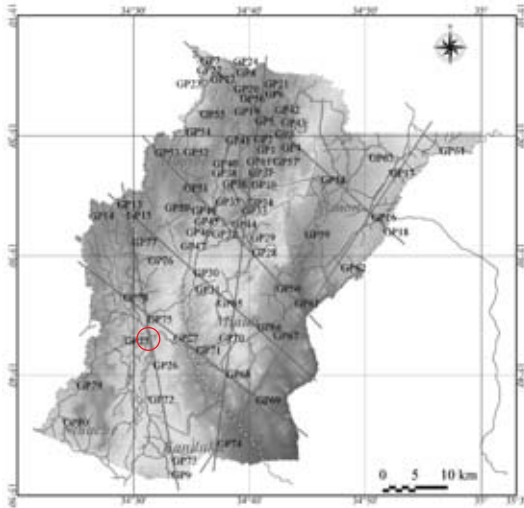
Resistivity structure section

No: GP25

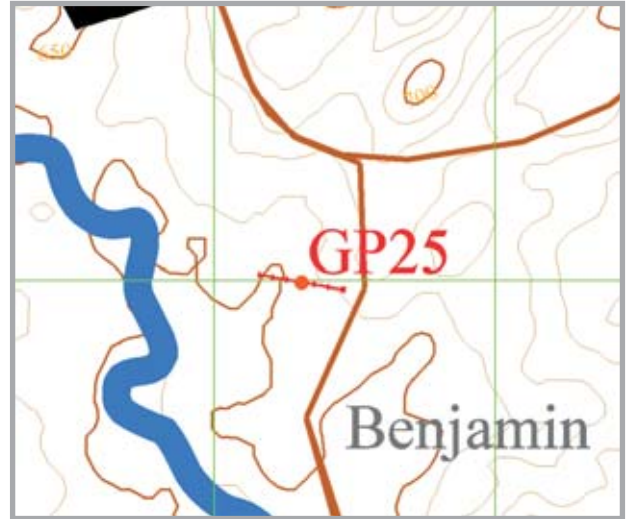
District: Mwanza

Village: Elia

POS(UTM36) N8,272,995m ,E663,311m, Elevation=642m



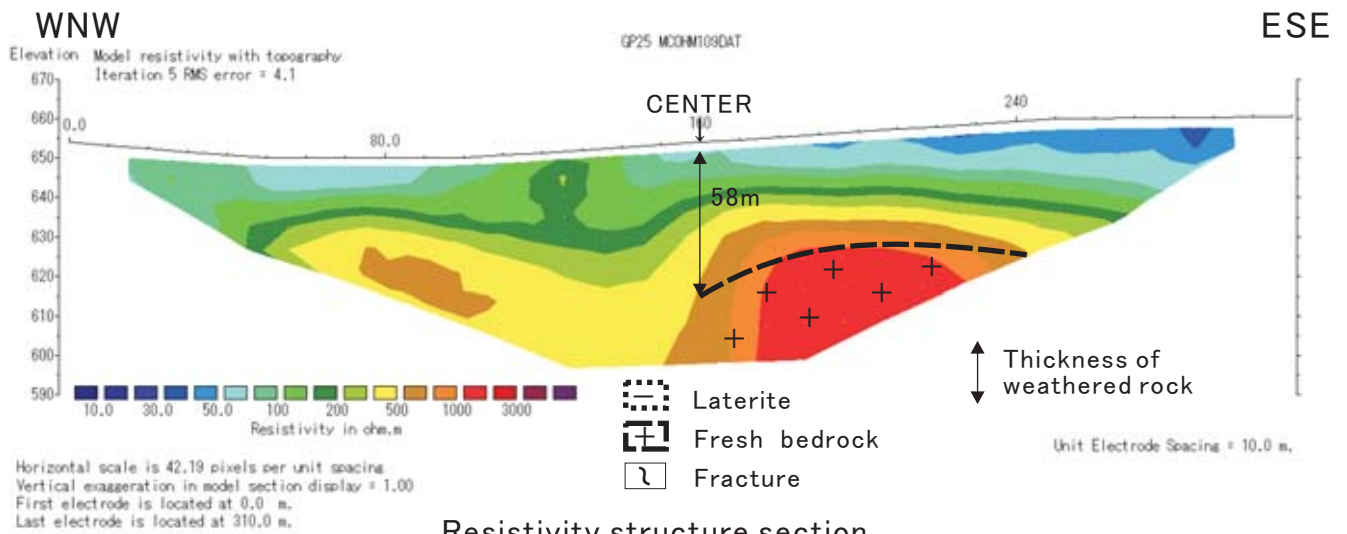
Index map



Location map



Scene of field site



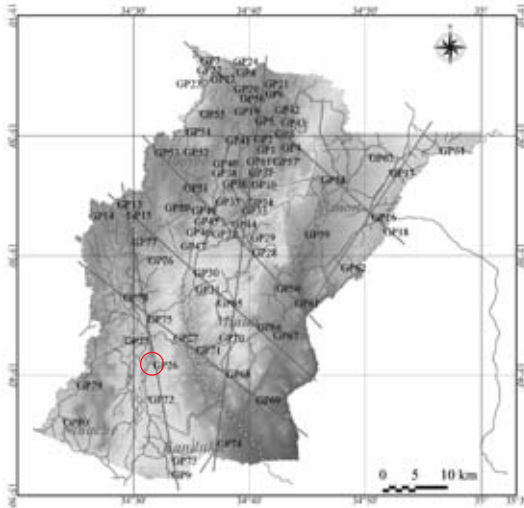
Resistivity structure section

No: GP26

District: Mwanza

Village: Siledi

POS(UTM36) N8,629,208m ,E663,835m, Elevation=643m



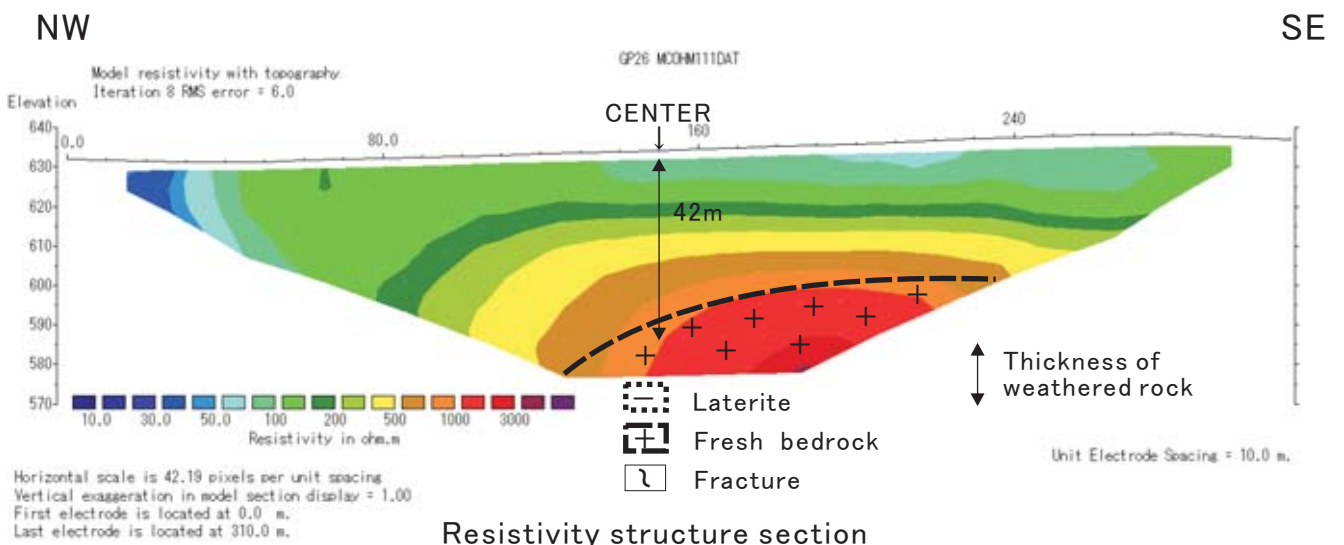
Index map



Location map



Scene of field site



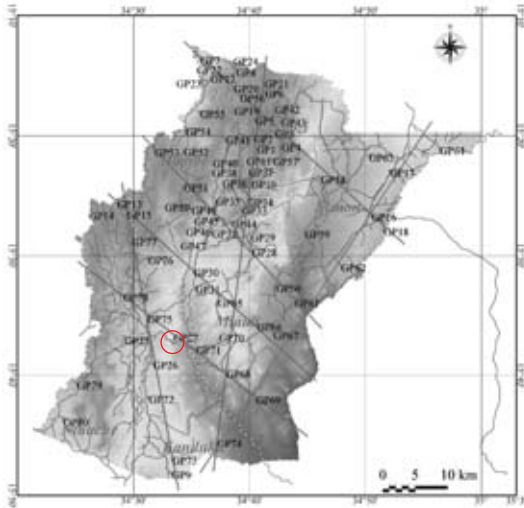
Resistivity structure section

No: GP27

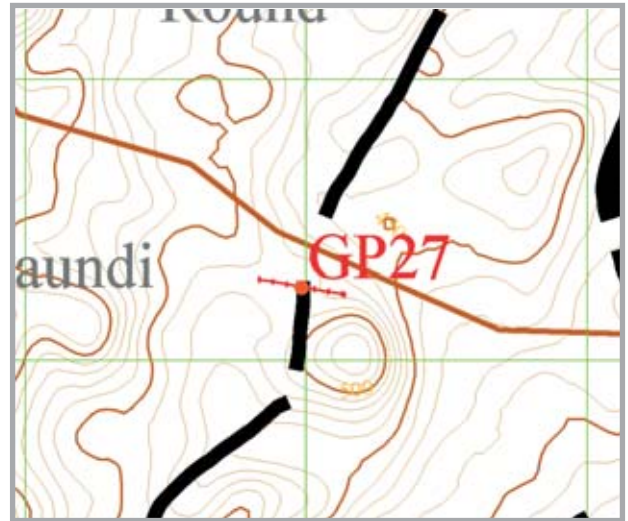
District: Mwanza

Village: Raundi

POS(UTM36) N8,272,261m ,E666,985m, Elevation=491m



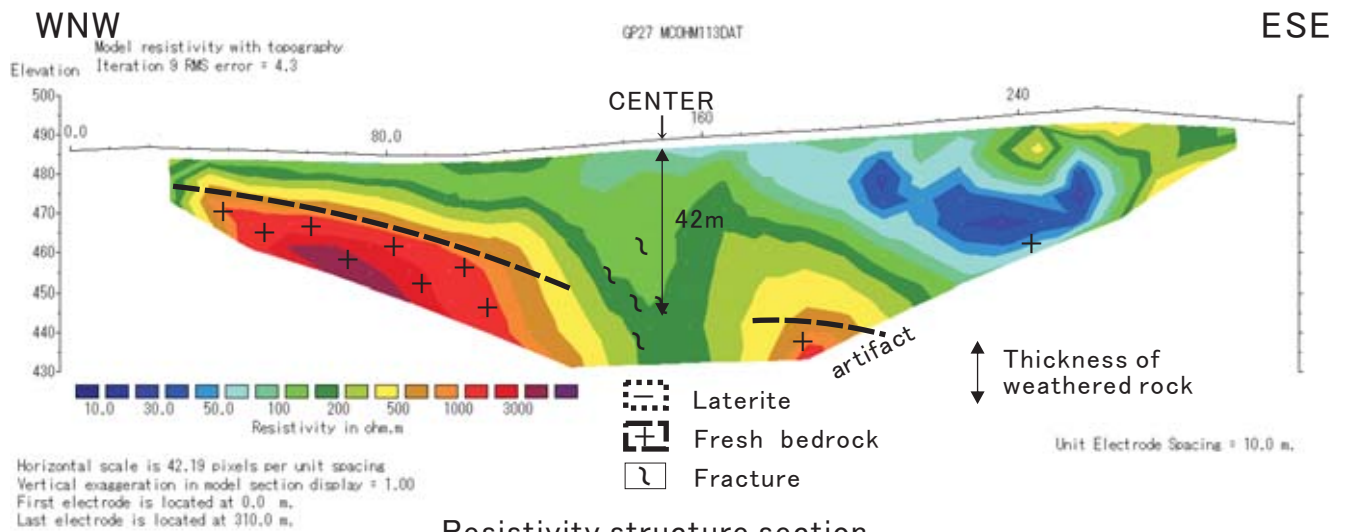
Index map



Location map



Scene of field site



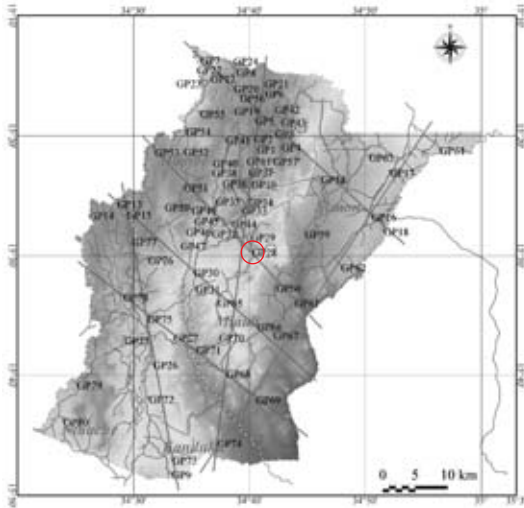
Resistivity structure section

No: GP28

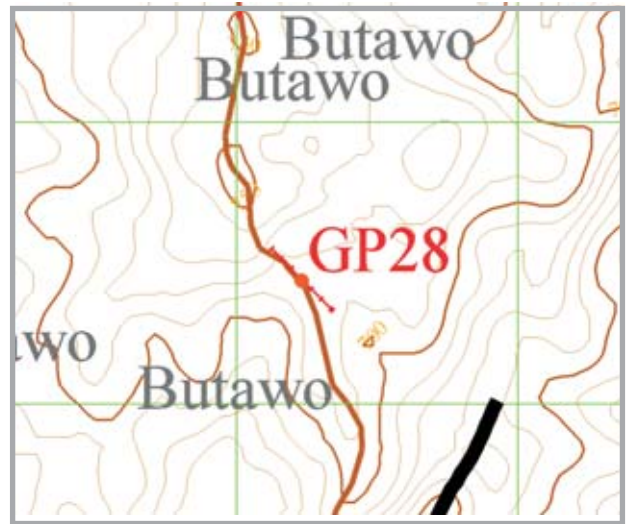
District: Neno

Village: Butawo

POS(UTM36) N8,286,440m ,E679,231m, Elevation=709m



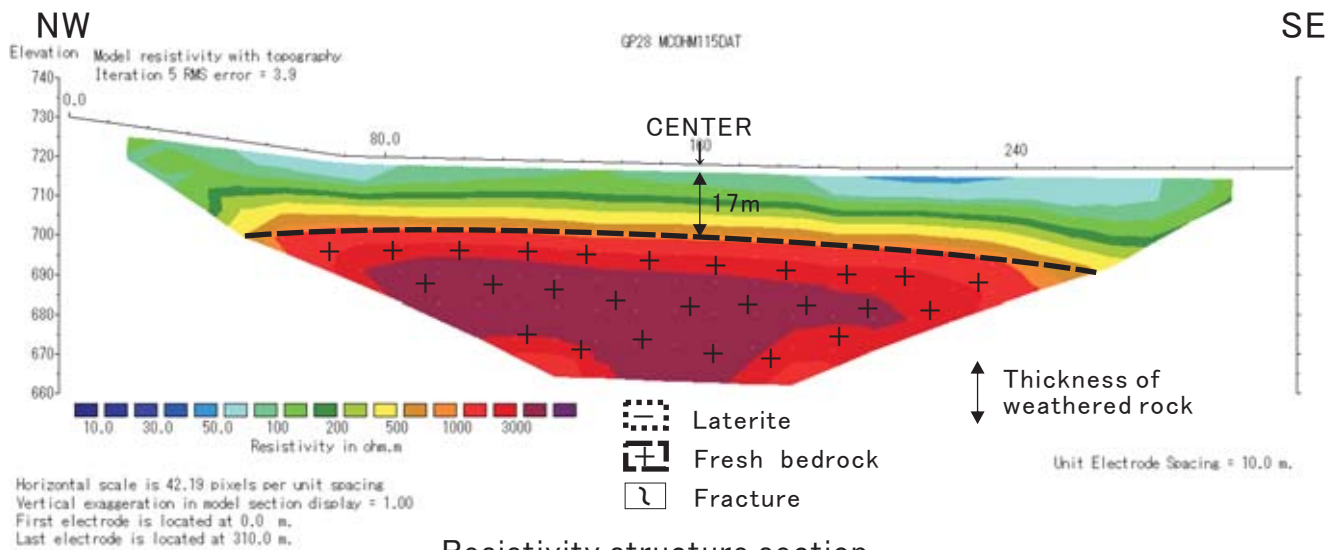
Index map



Location map



Scene of field site

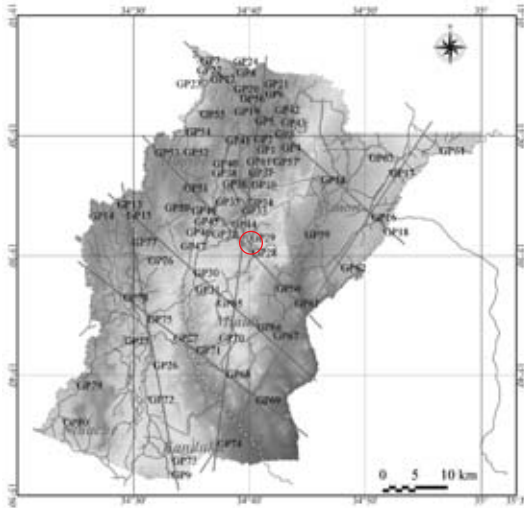


No: GP29

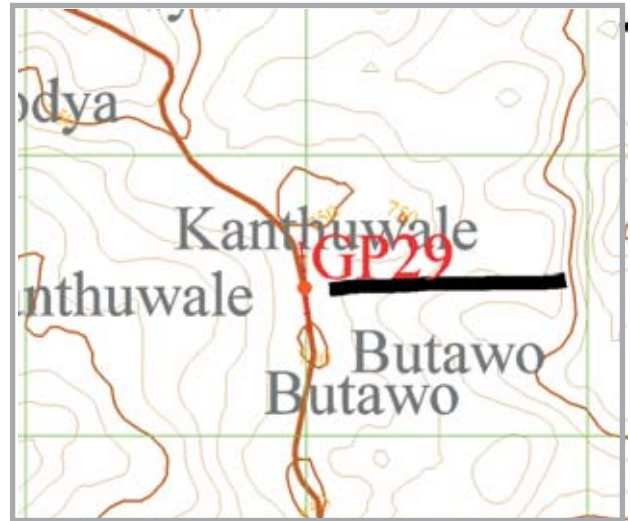
District: Neno

Village: Kamtuwale

POS(UTM36) N8,287,532m ,E678,994m, Elevation=747m



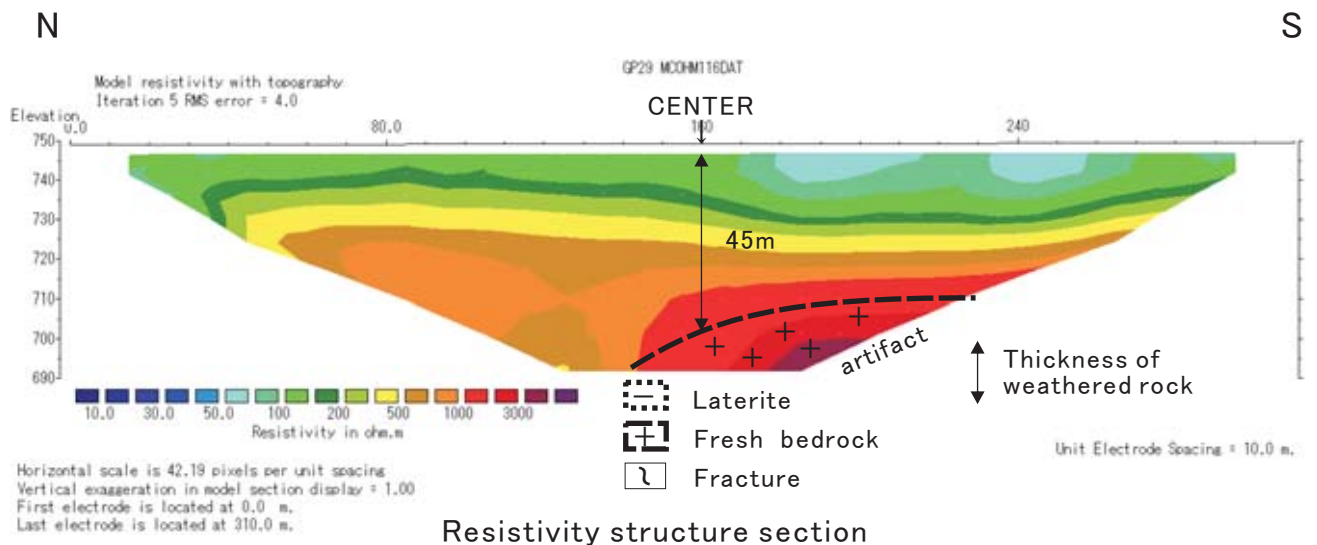
Index map



Location map



Scene of field site



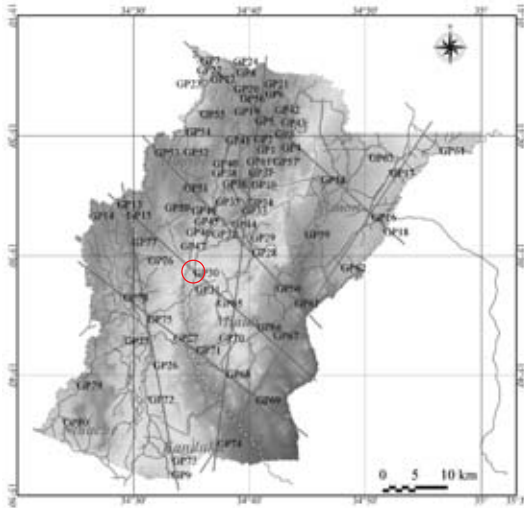
Resistivity structure section

No: GP30

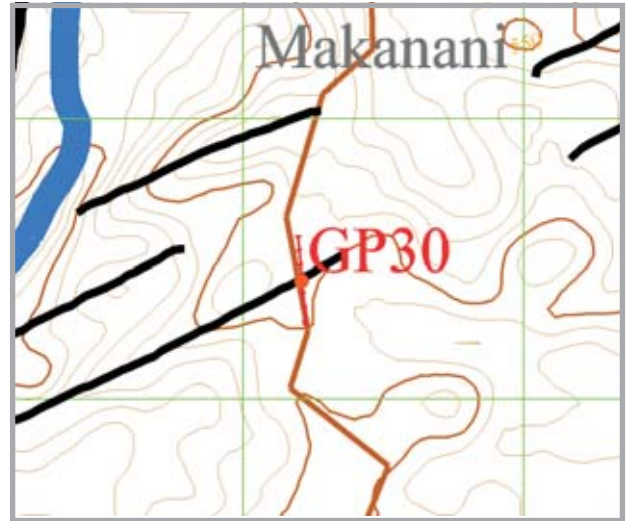
District: Neno

Village: Gonti

POS(UTM36) N8,283,423m ,E670,210m, Elevation=521m



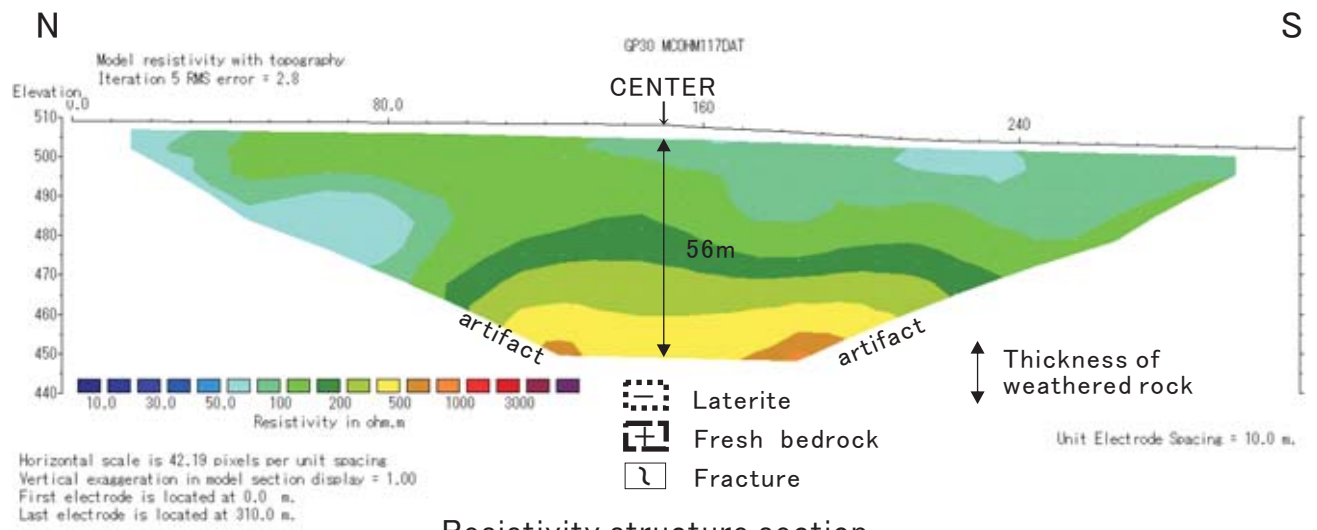
Index map



Location map



Scene of field site



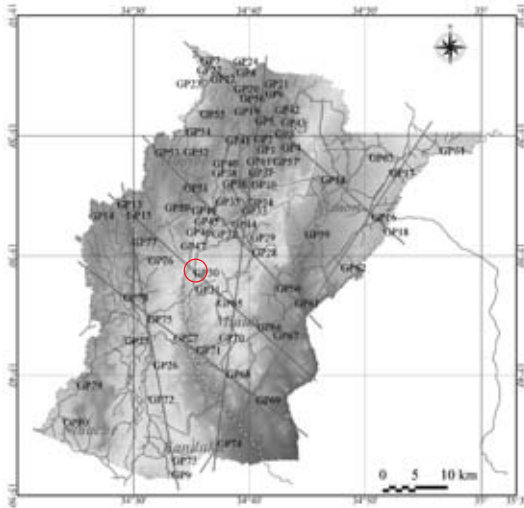
Resistivity structure section

No: GP31

District: Neno

Village: Gomthi

POS(UTM36) N8,280,832m ,E670,431m, Elevation=492m



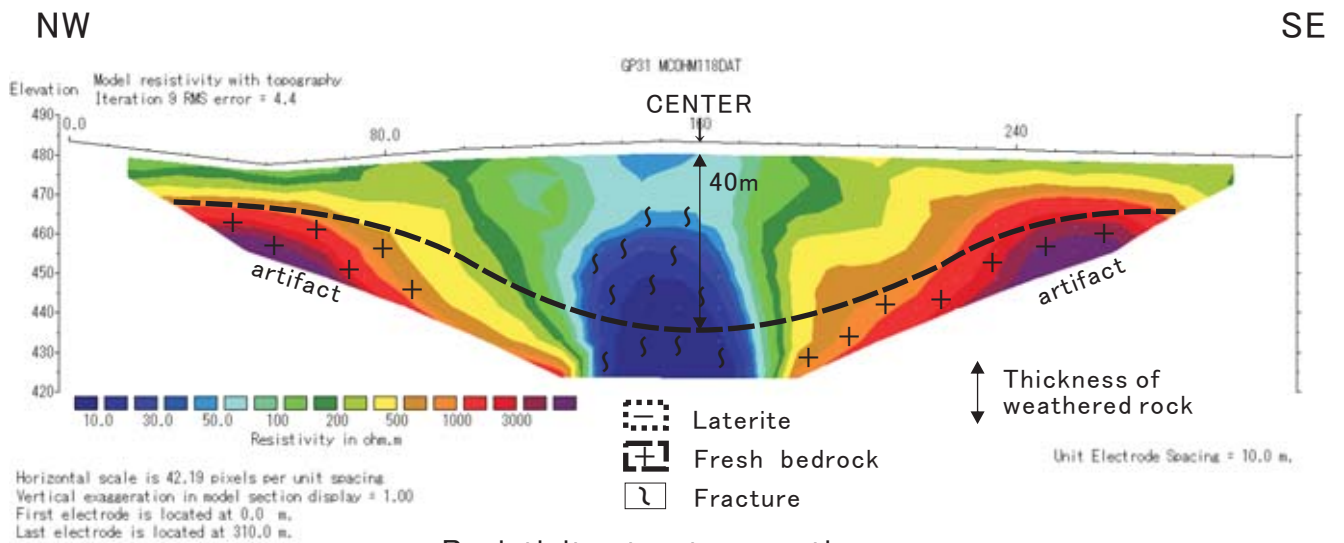
Index map



Location map



Scene of field site



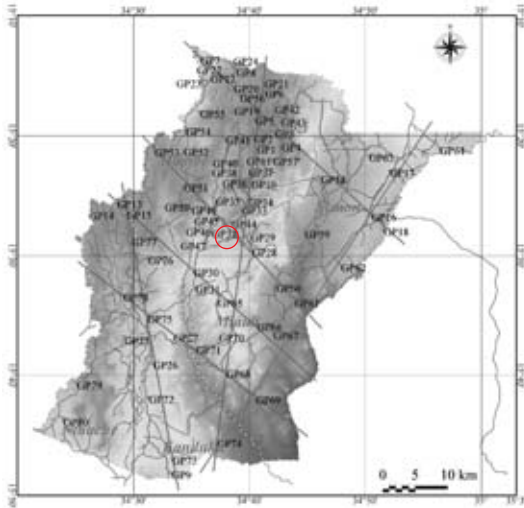
Resistivity structure section

No: GP32

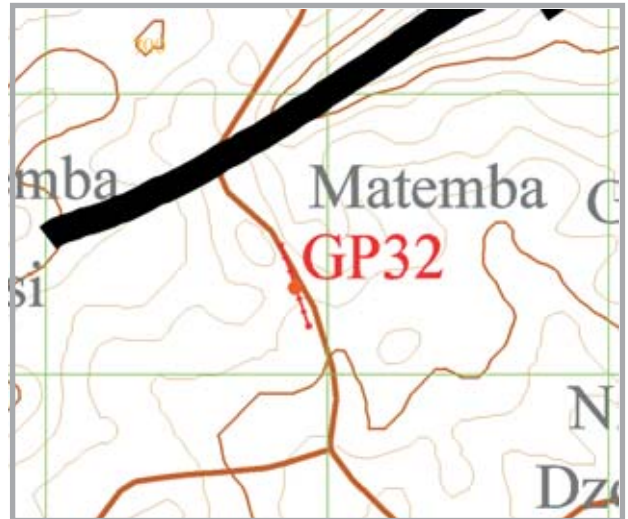
District: Neno

Village: Matemba

POS(UTM36) N8,289,312m ,E676,885m, Elevation=733m



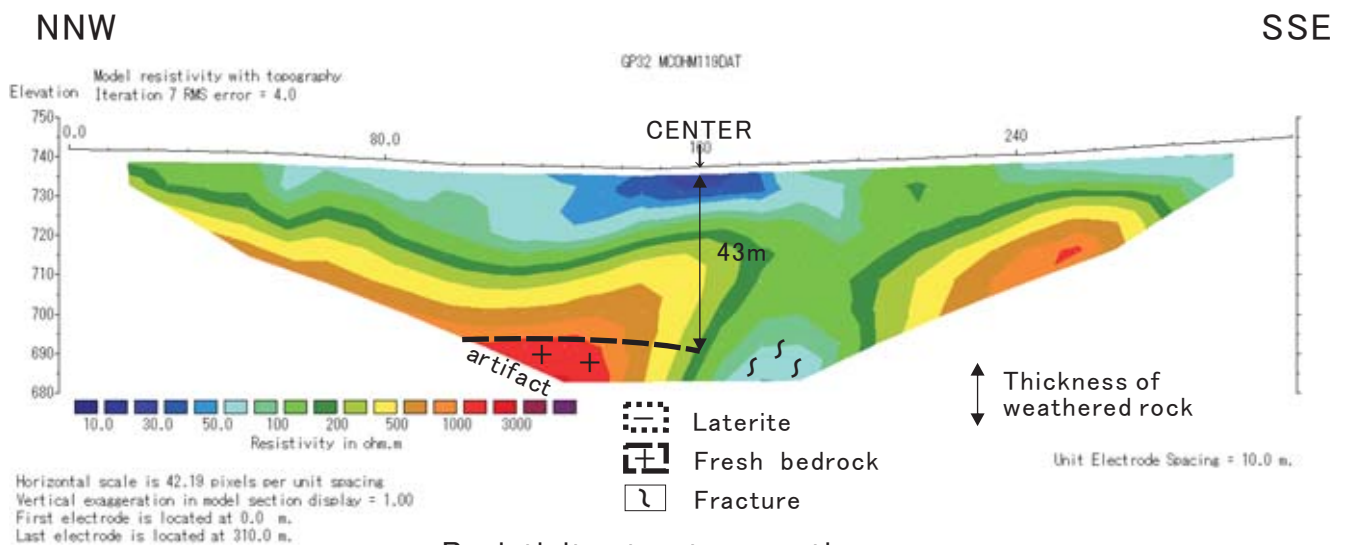
Index map



Location map



Scene of field site



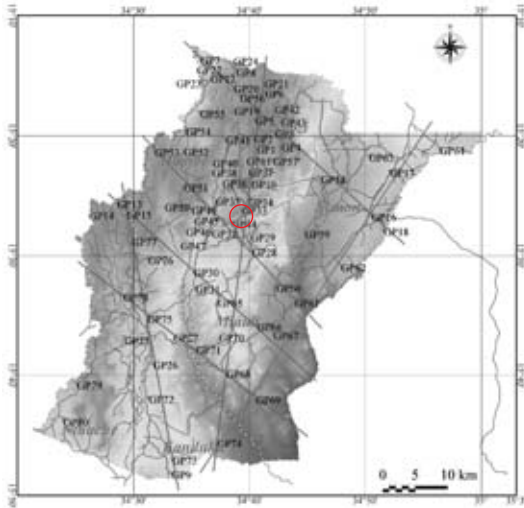
Resistivity structure section

No: GP33

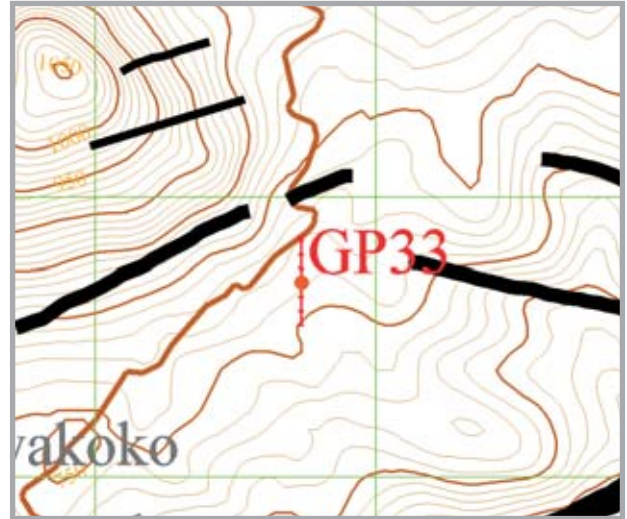
District: Neno

Village: Nyakoko

POS(UTM36) N8,291,698m ,E677,735m, Elevation=771m



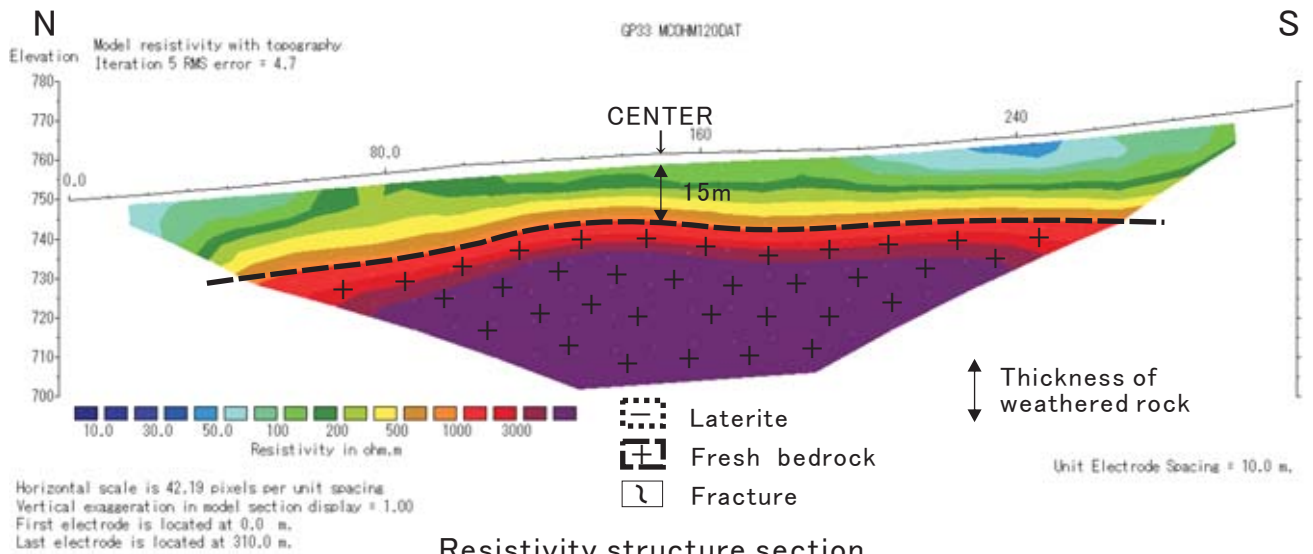
Index map



Location map



Scene of field site



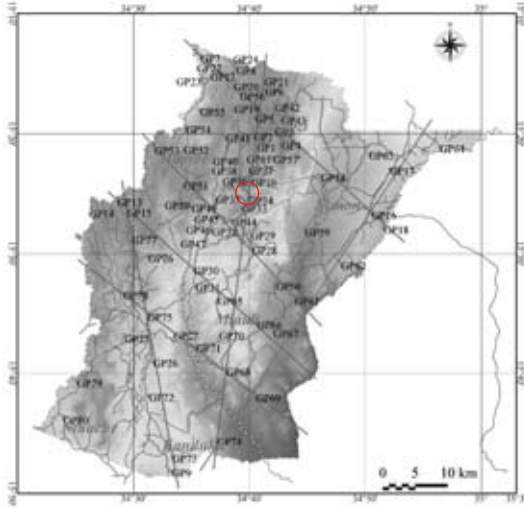
Resistivity structure section

No: GP34

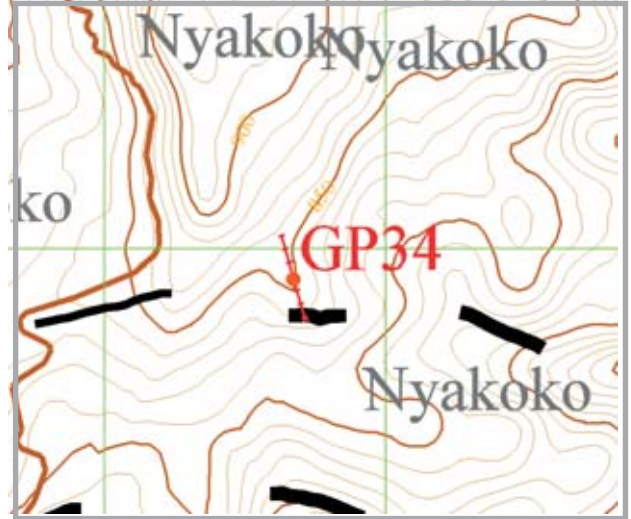
District: Neno

Village: Nyakoko

POS(UTM36) N8,292,897m ,E678,673m ,Elevation=835m



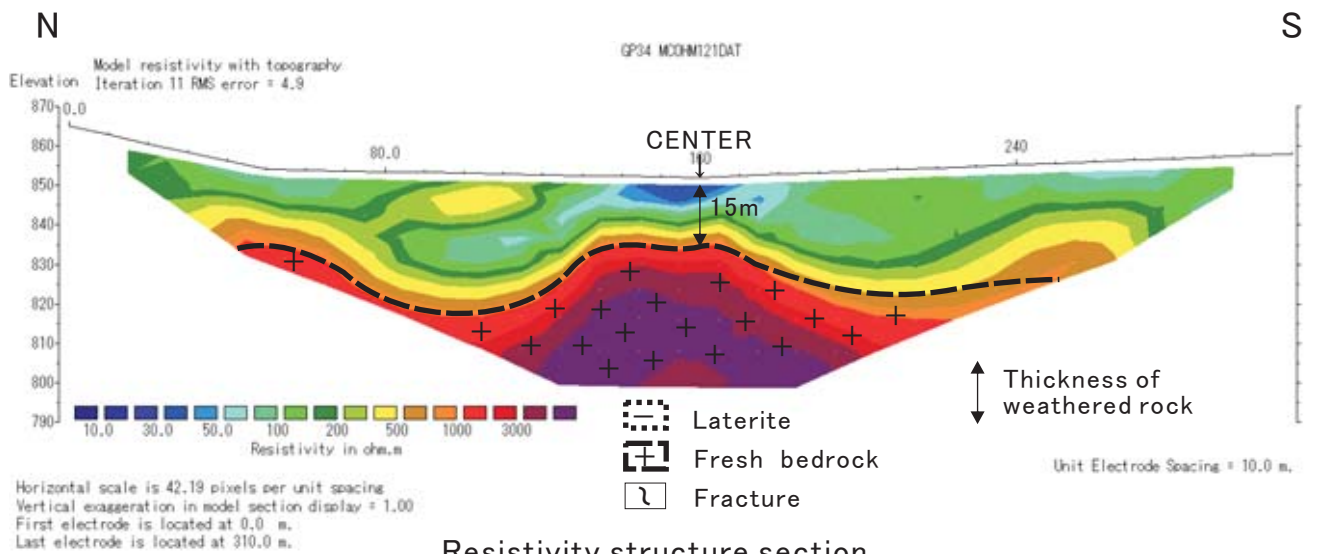
Index map



Location map



Scene of field site



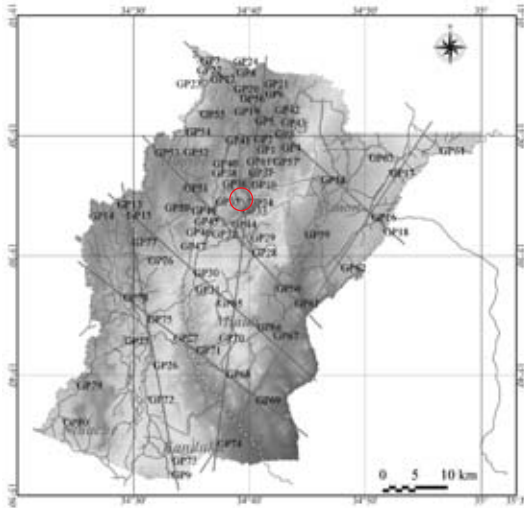
Resistivity structure section

No: GP35

District: Neno

Village: Chinyani

POS(UTM36) N8,294,285m ,E677,454m, Elevation=782m



Index map



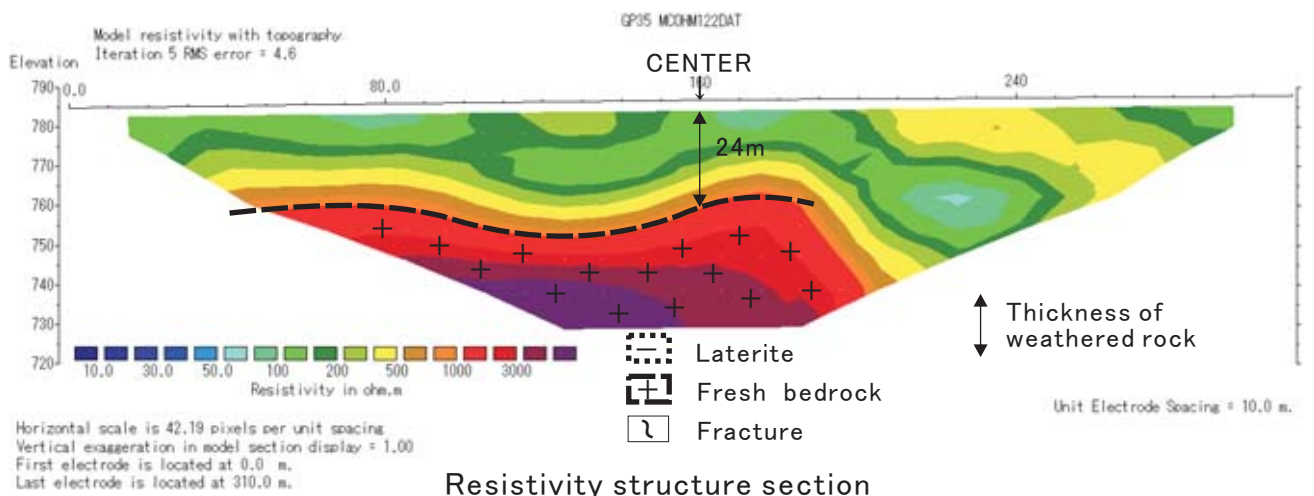
Location map



Scene of field site

WSW

ENE



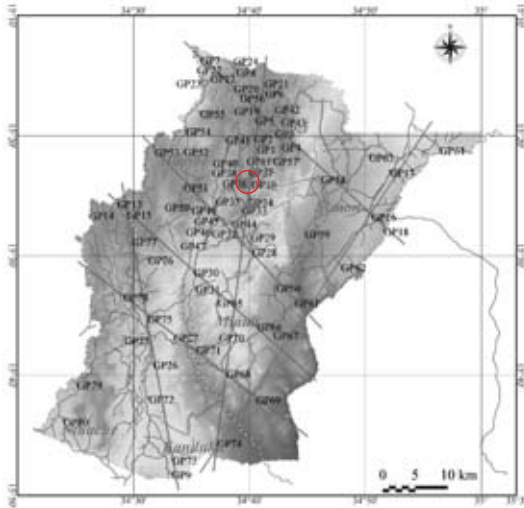
Resistivity structure section

No: GP36

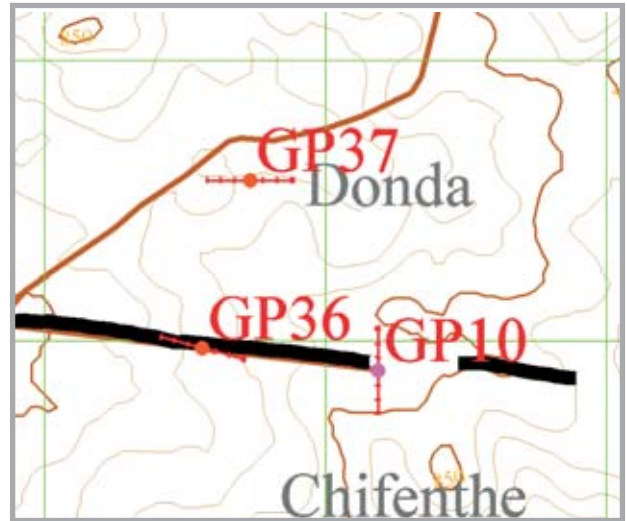
District: Neno

Village: Khonjeni

POS(UTM36) N8,296,976m ,E678,561m, Elevation=876m



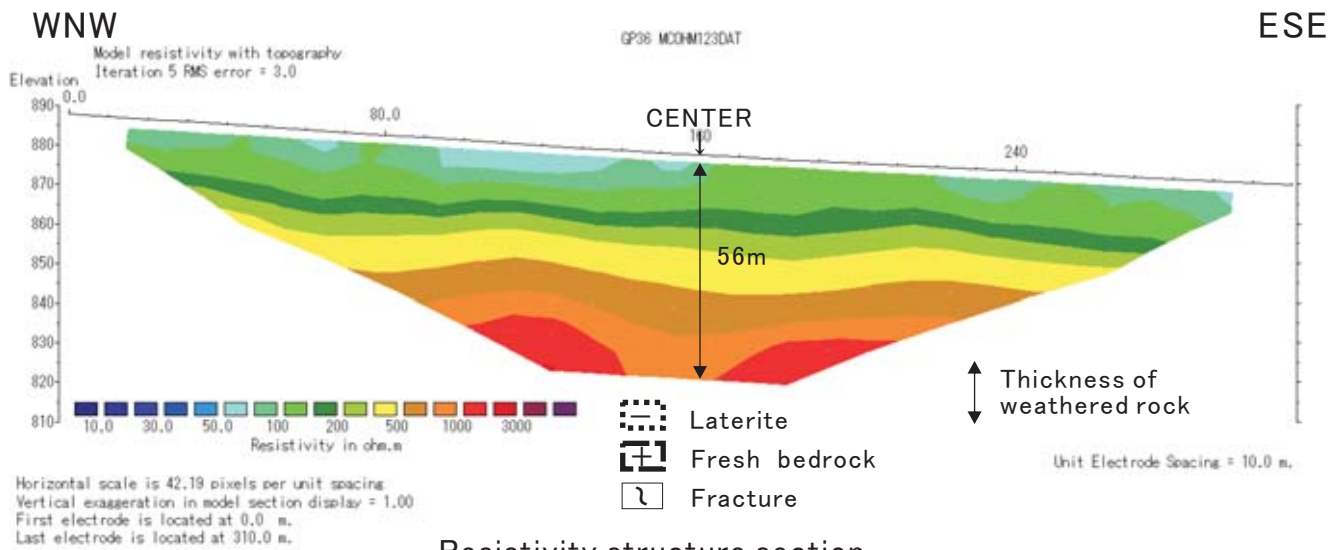
Index map



Location map



Scene of field site



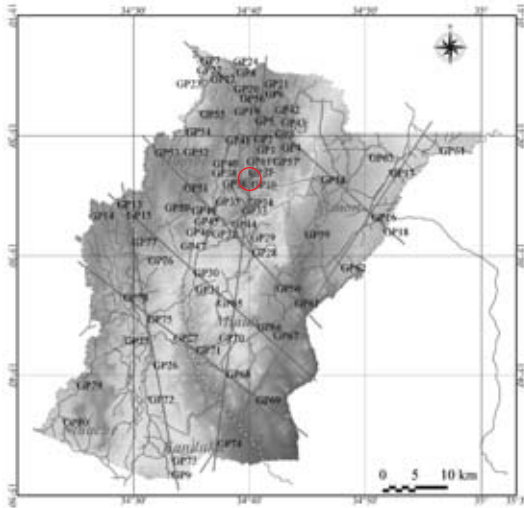
Resistivity structure section

No: GP37

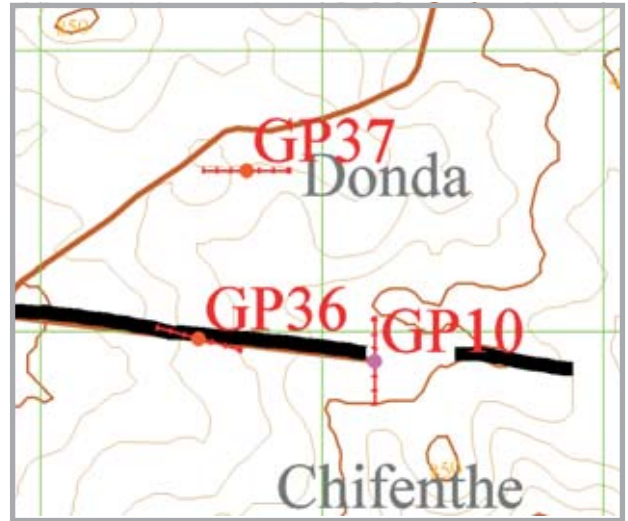
District: Neno

Village: Donda I

POS(UTM36) N8,297,573m ,E678,732m, Elevation=880m



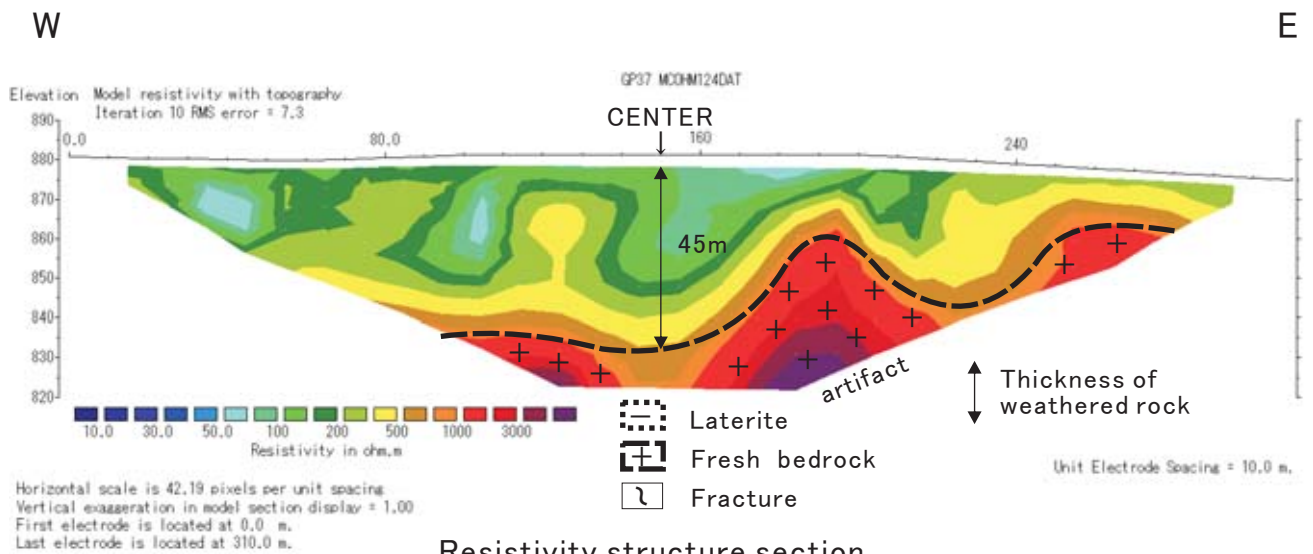
Index map



Location map



Scene of field site



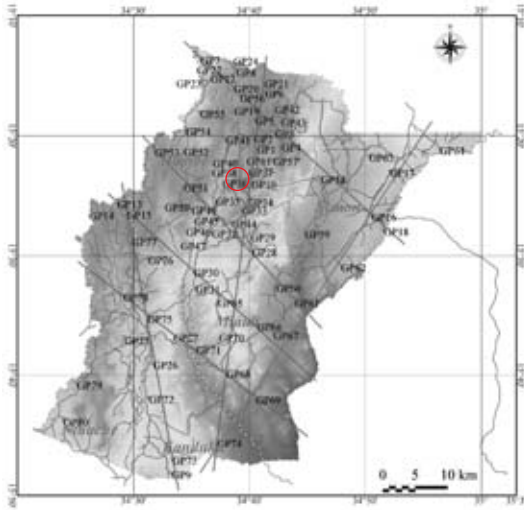
Resistivity structure section

No: GP38

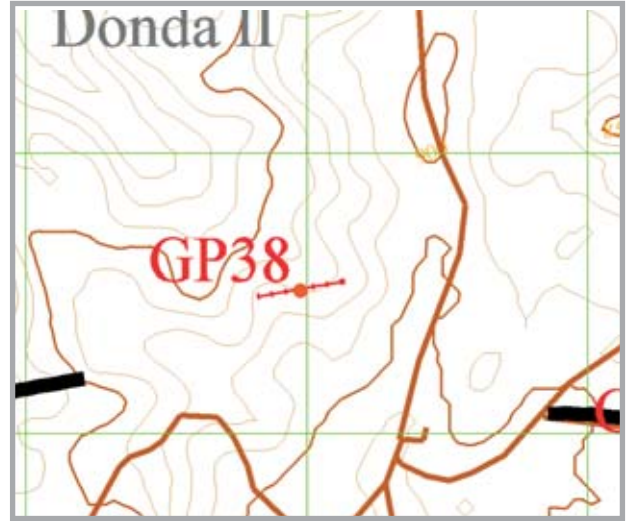
District: Neno

Village: Litchowa

POS(UTM36) N8,297,514m ,E676,977m, Elevation=864m



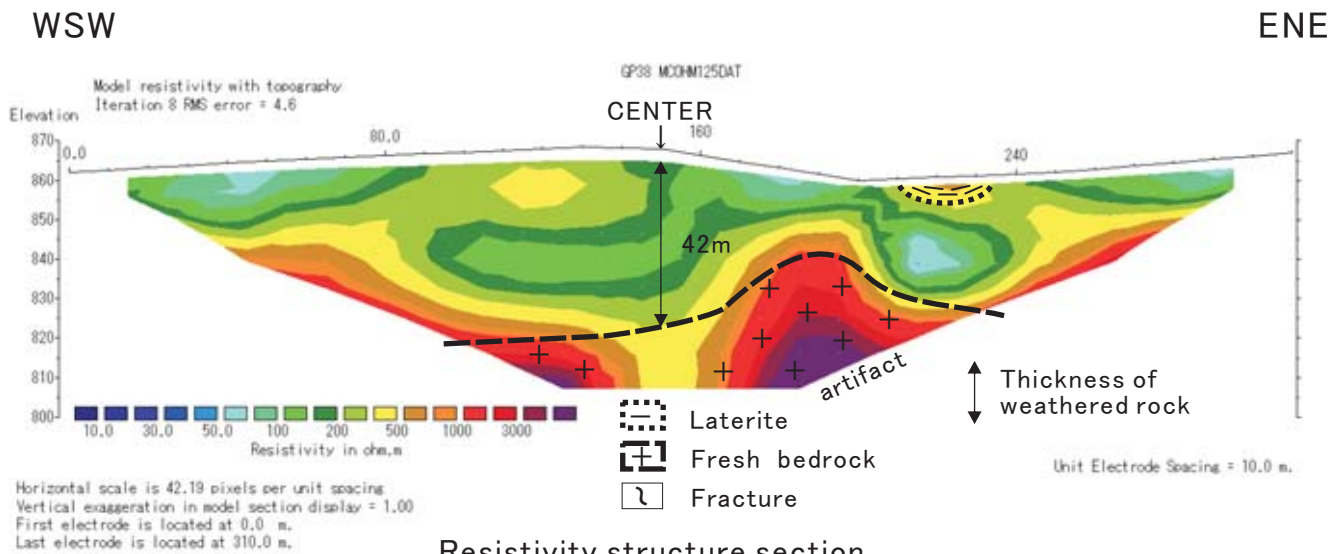
Index map



Location map



Scene of field site



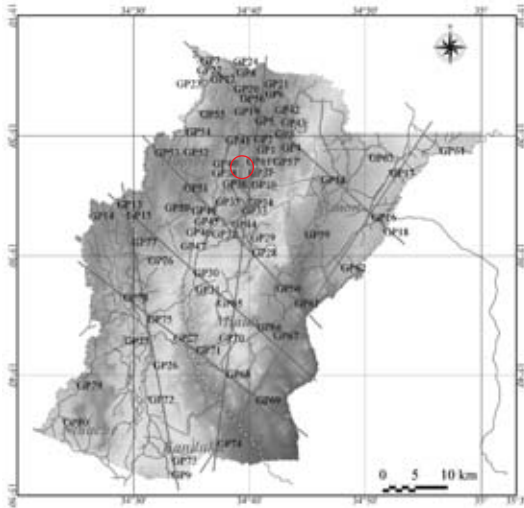
Resistivity structure section

No: GP39

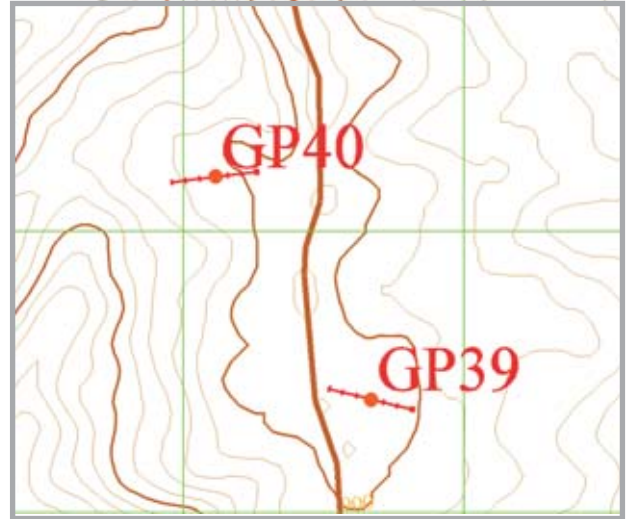
District: Neno

Village: Thambani

POS(UTM36) N8,299,404m ,E677,669m, Elevation=963m



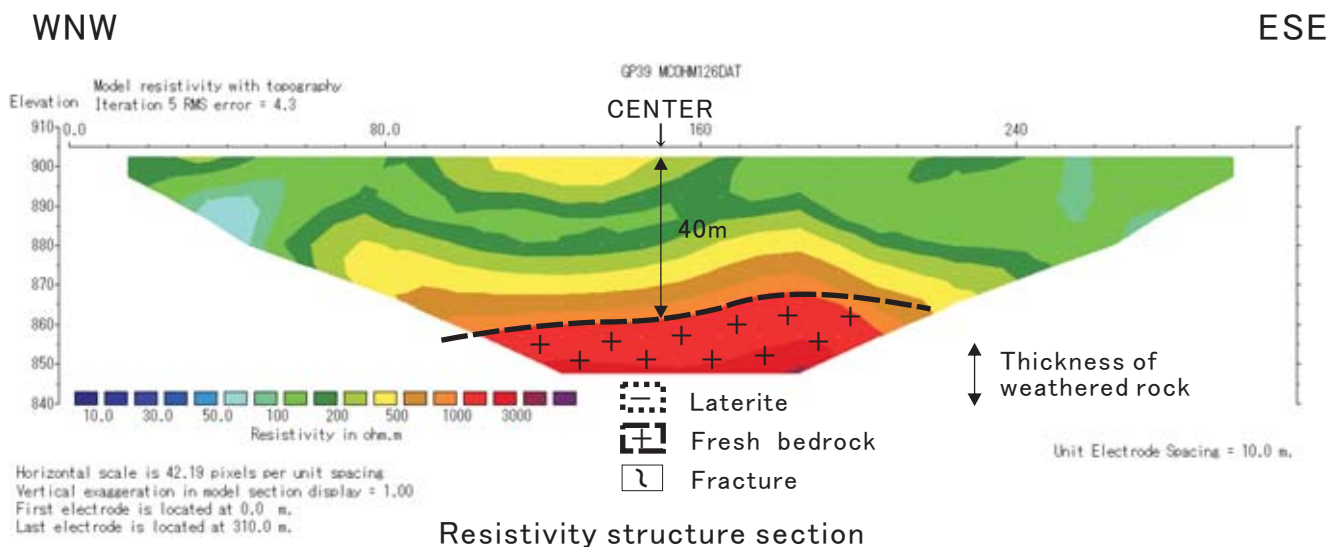
Index map



Location map



Scene of field site



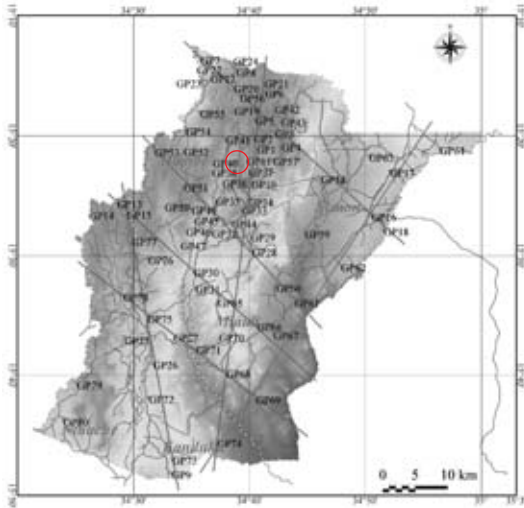
Resistivity structure section

No: GP40

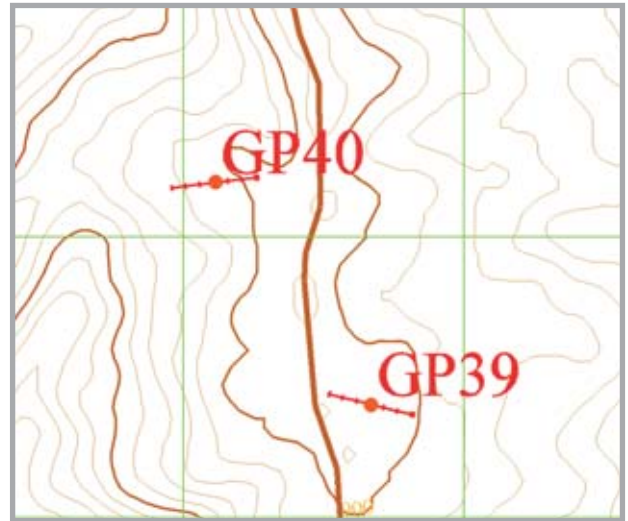
District: Neno

Village: Helani

POS(UTM36) N8,300,195m ,E677,115m, Elevation=891m



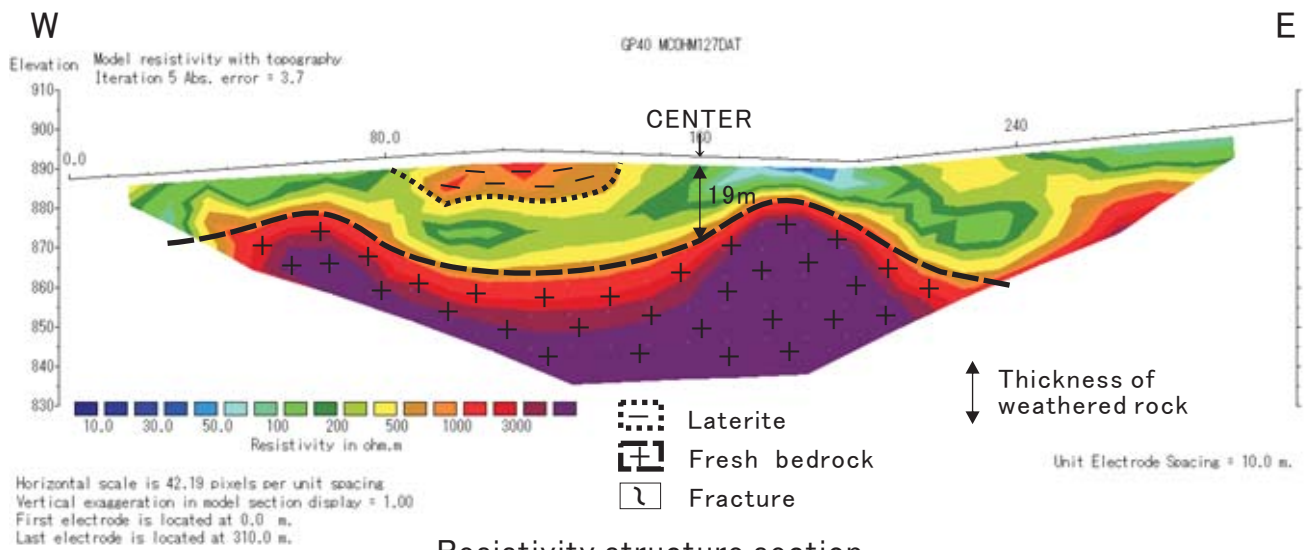
Index map



Location map



Scene of field site



Resistivity structure section