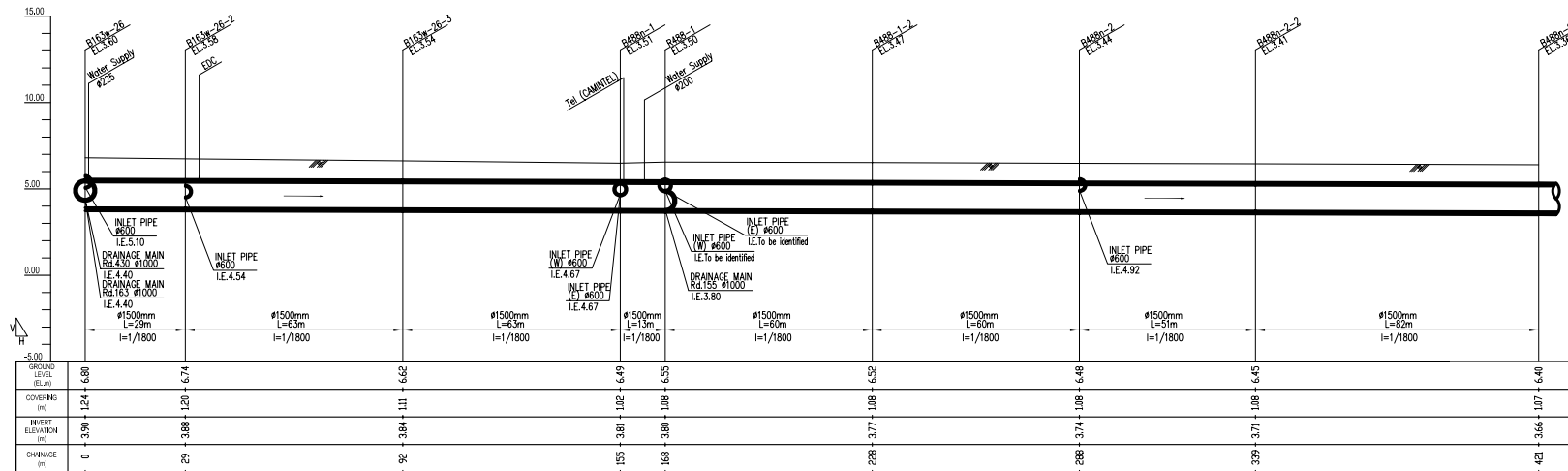


PLAN (Manhole No. fr. B163w-26 to B488n-2-3)

SCALE A

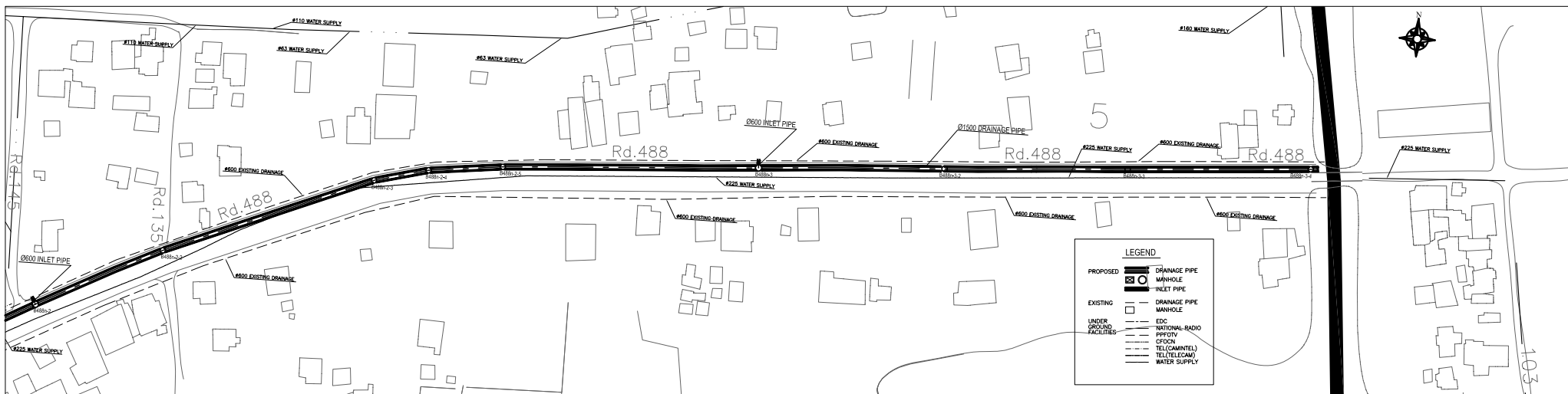


PROFILE (Manhole No. fr. B163w-26 to B488n-2-3)

H: SCALE A V: SCALE B

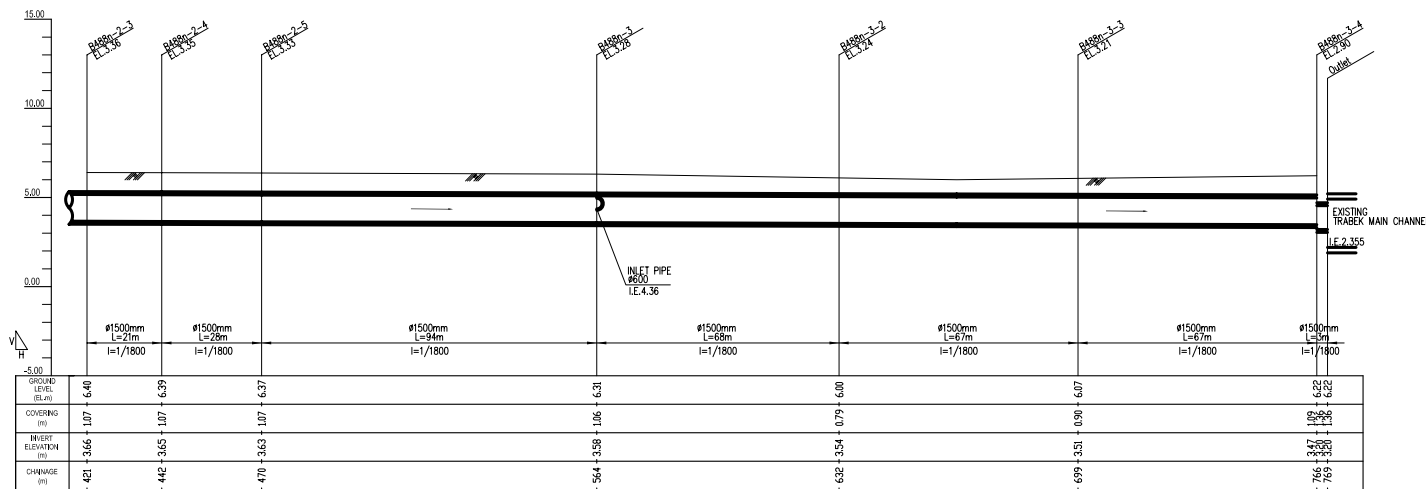
SCALE A 0 10 20 30 40 50 m

SCALE B 0 2 4 6 8 10 m



PLAN (Manhole No. fr. B288n-2-3 to Outlet for Trabek Main Channel)

SCALE A



PROFILE (Manhole No. fr. B488n-2-3 to Outlet for Trabek Main Channel)

H: SCALE A V: SCALE B

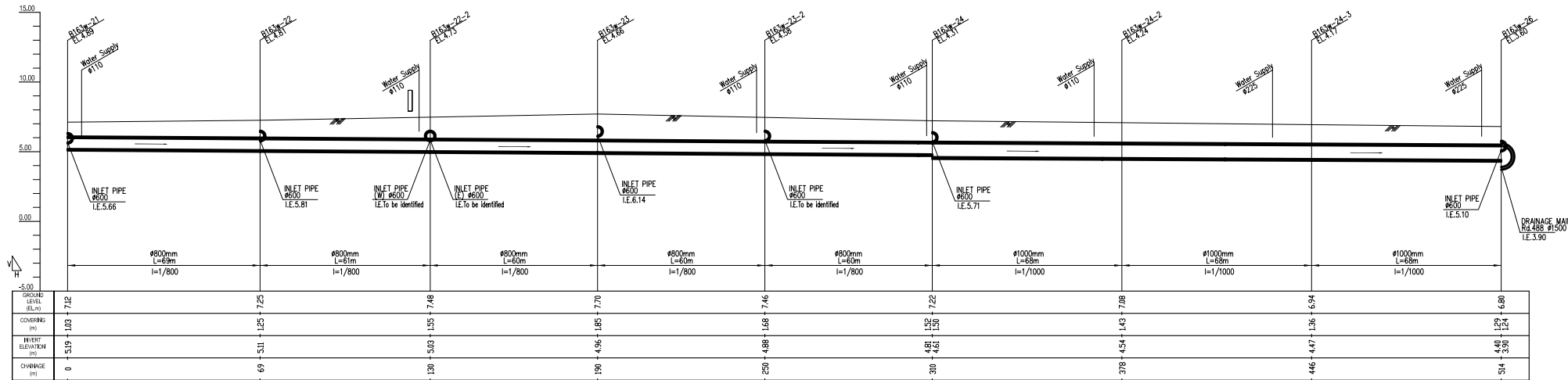
SCALE A 0 10 20 30 40 50 m

SCALE B 0 2 4 6 8 10 m



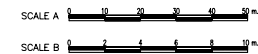
PLAN (Manhole No. fr. B163w-21 to B163w-26)

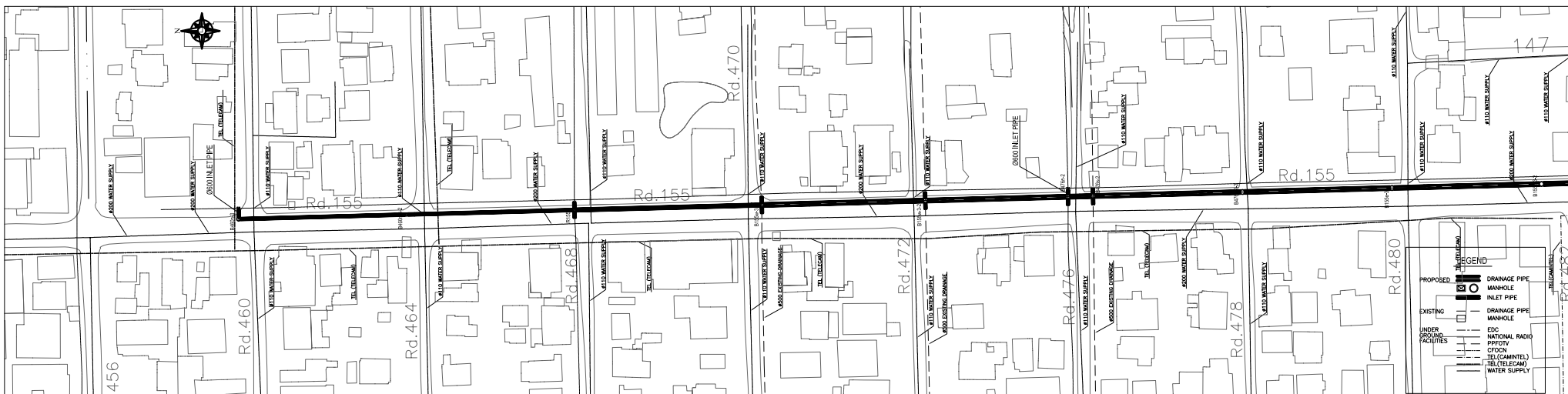
SCALE A



PROFILE (Manhole No. fr. B163w-21 to B163w-26)

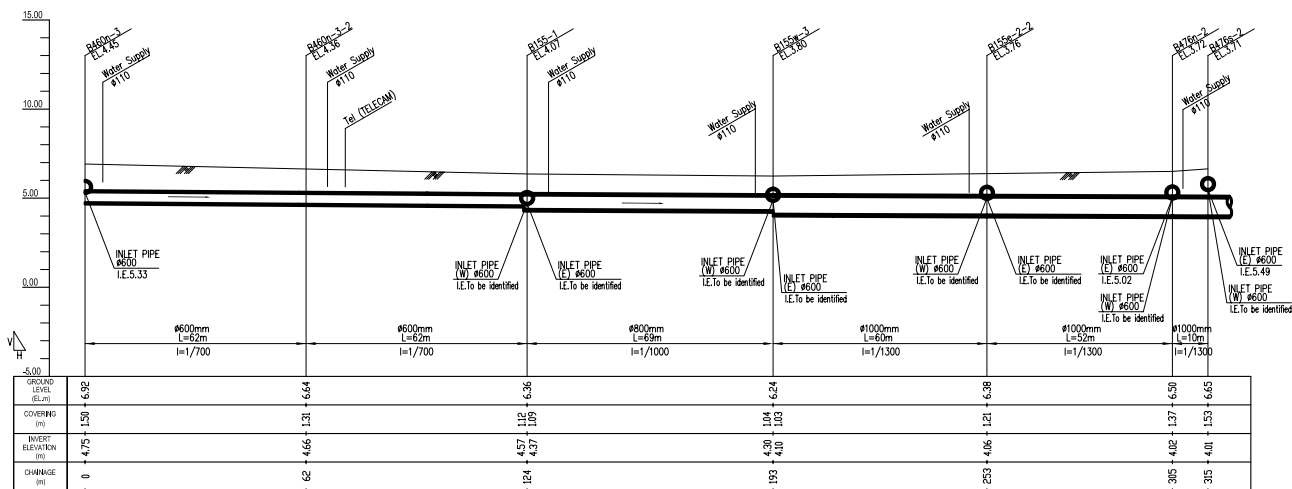
H: SCALE A V: SCALE B





PLAN (Manhole No. fr. B460n-3 to B476s-2)

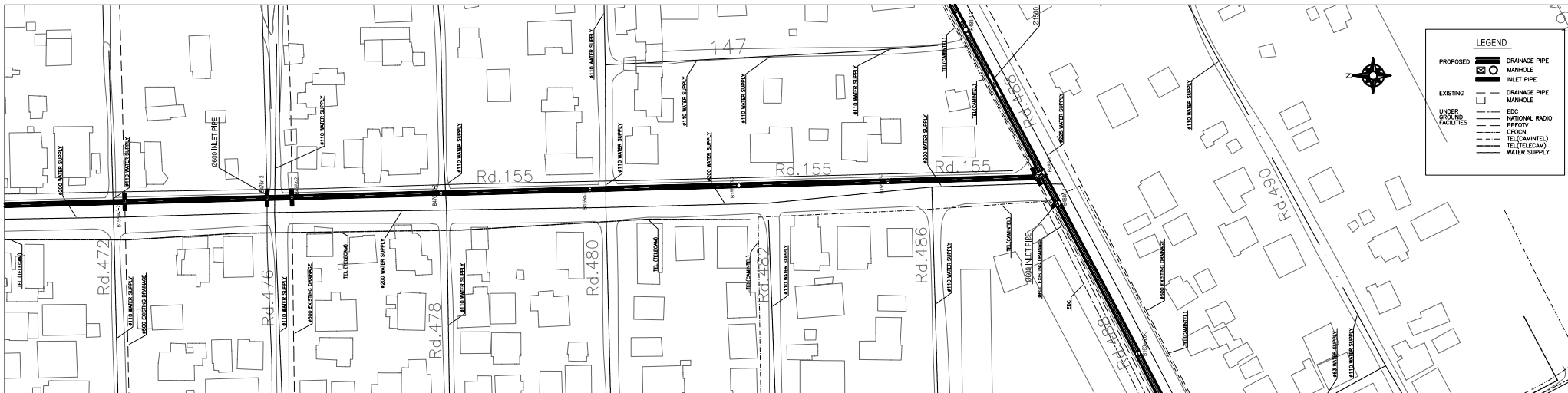
SCALE A



PROFILE (Manhole No. fr. B460n-3 to B476s-2)

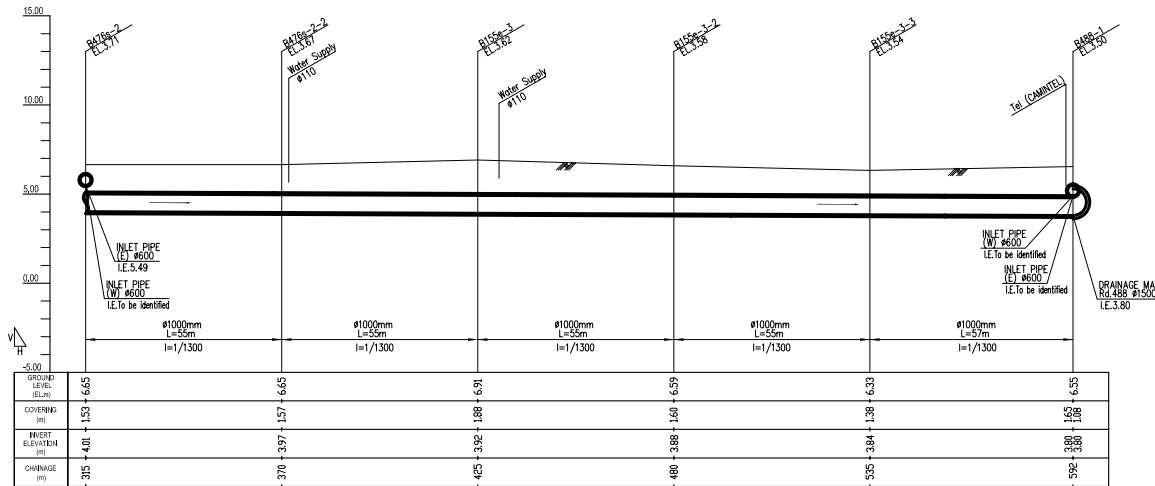
H: SCALE A V: SCALE B





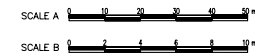
PLAN (Manhole No. fr. B476s-2 to B488-1)

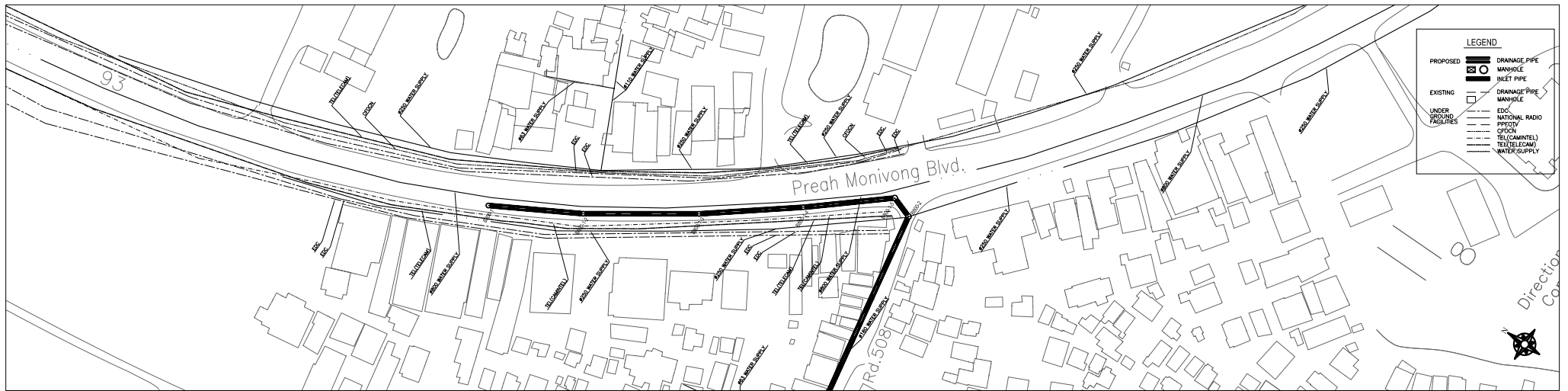
SCALE A



PROFILE (Manhole No. fr. B476s-2 to B488-1)

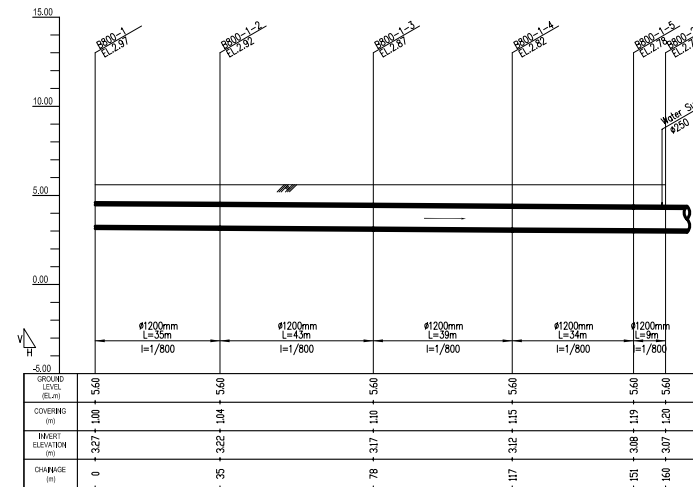
H: SCALE A V: SCALE B





PLAN (Manhole No. fr. B800-1 to B800-2)

SCALE A

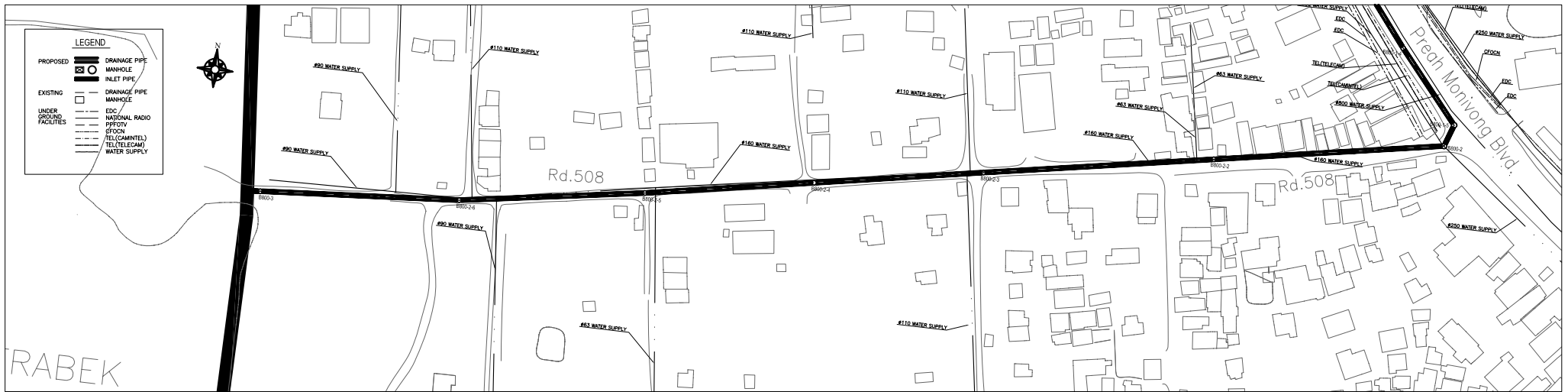


PROFILE (Manhole No. fr. B800-1 to B800-2)

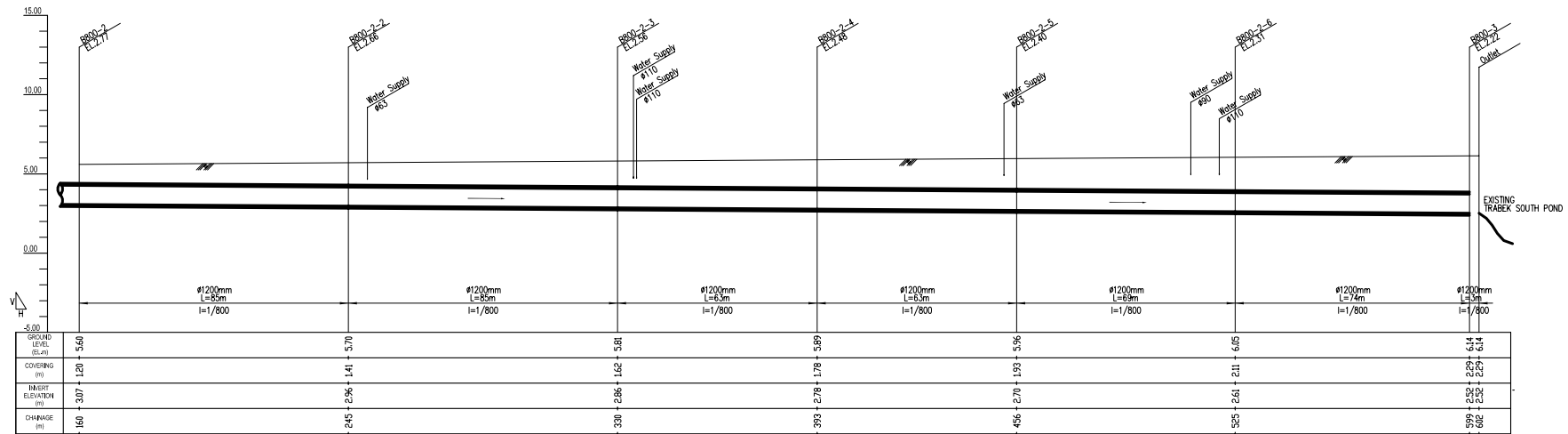
H: SCALE A V: SCALE B

SCALE A 0 10 20 30 40 50 m

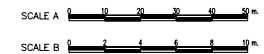
SCALE B 0 2 4 6 8 10 m

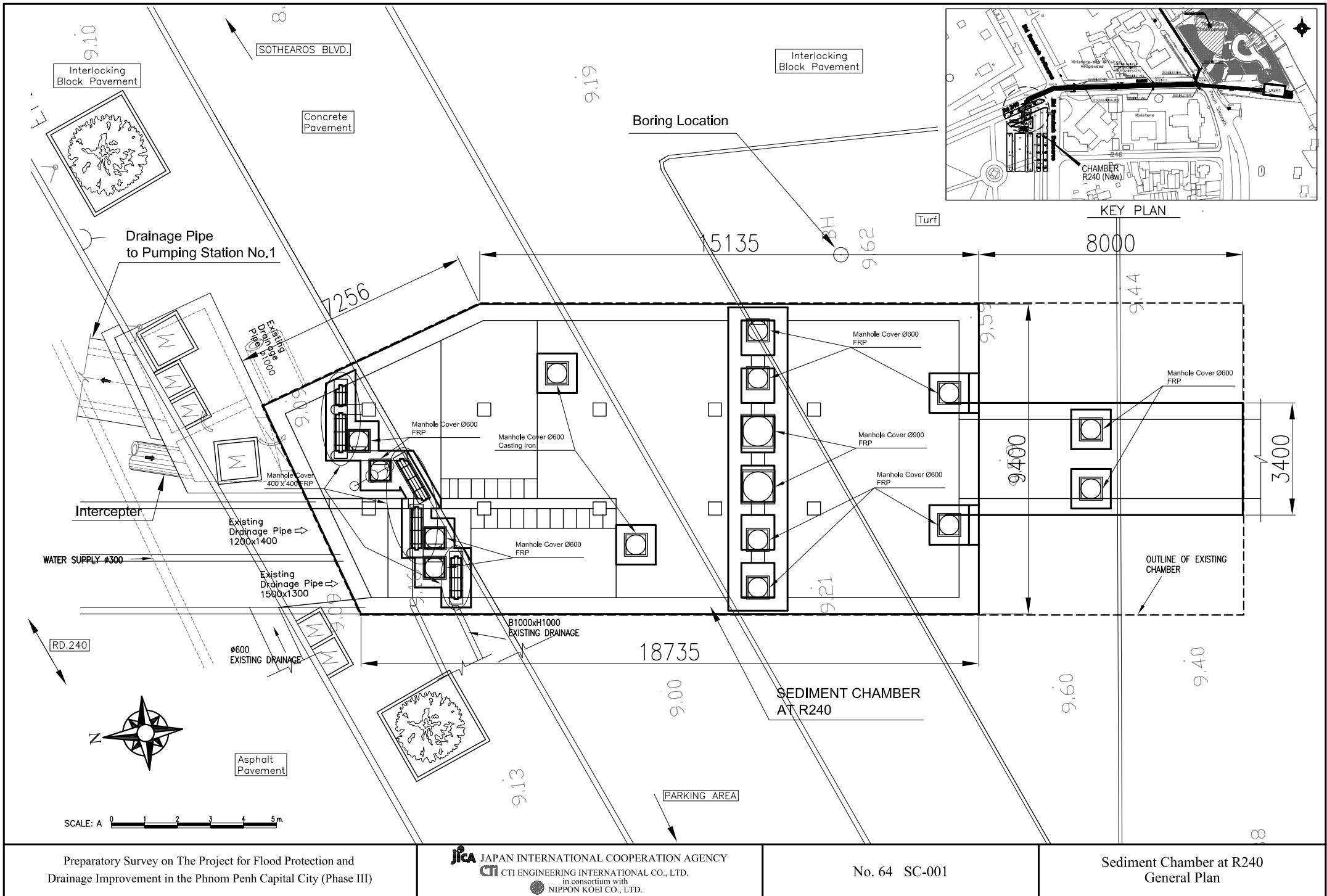


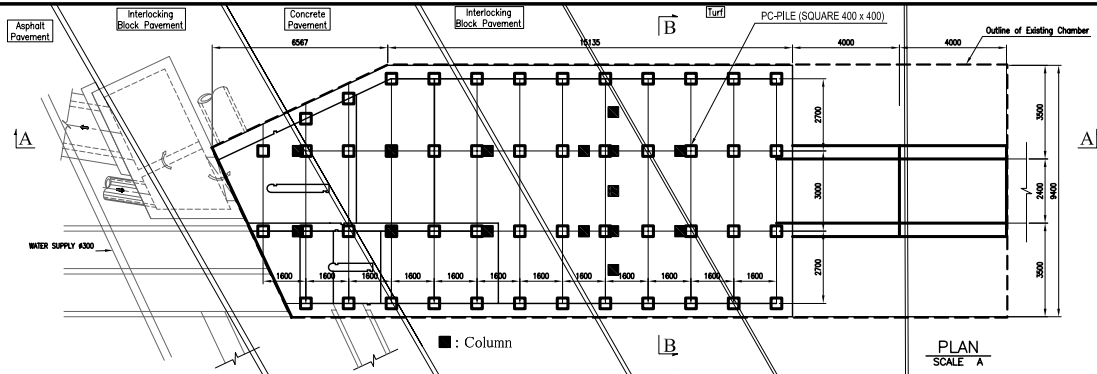
PLAN (Manhole No. fr. B800-2 to Outlet for Trabek South Pond)
SCALE A



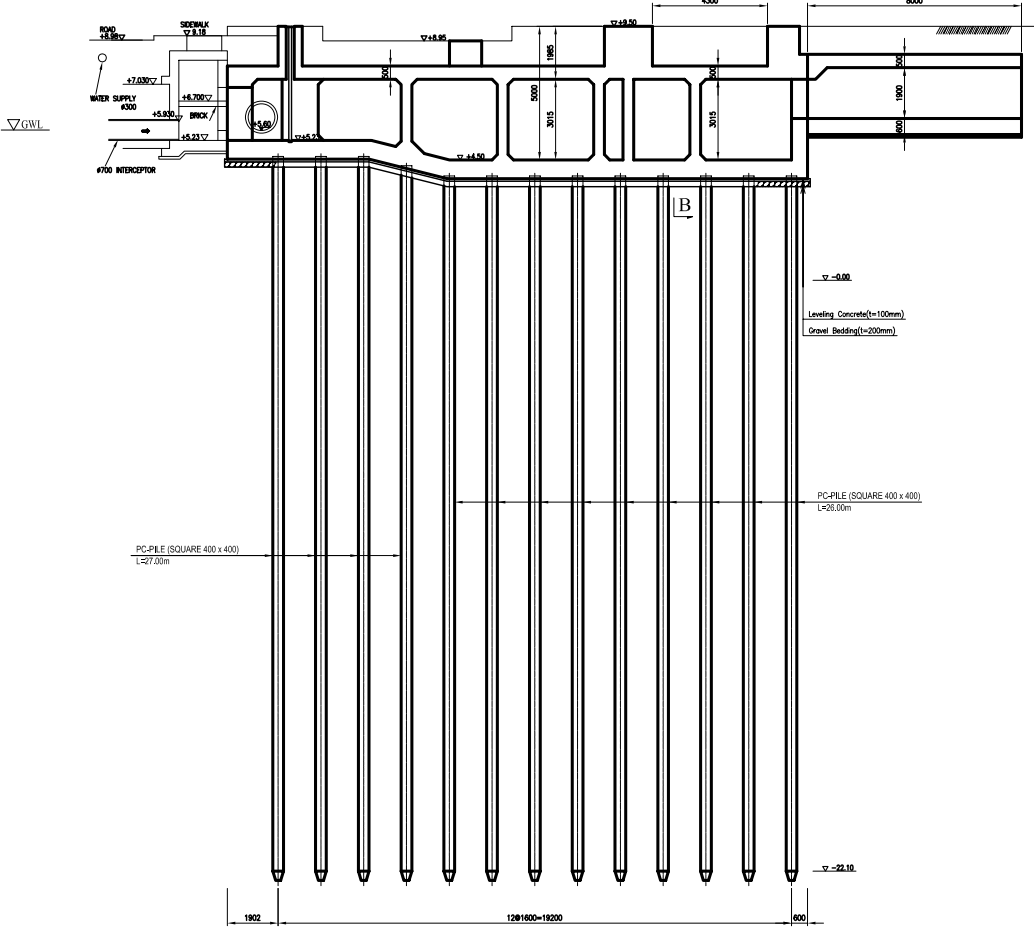
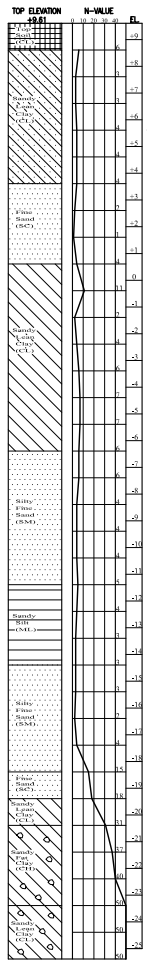
PROFILE (Manhole No. fr. B800-2 to Outlet for Trabek South Pond)
H: SCALE A V: SCALE B



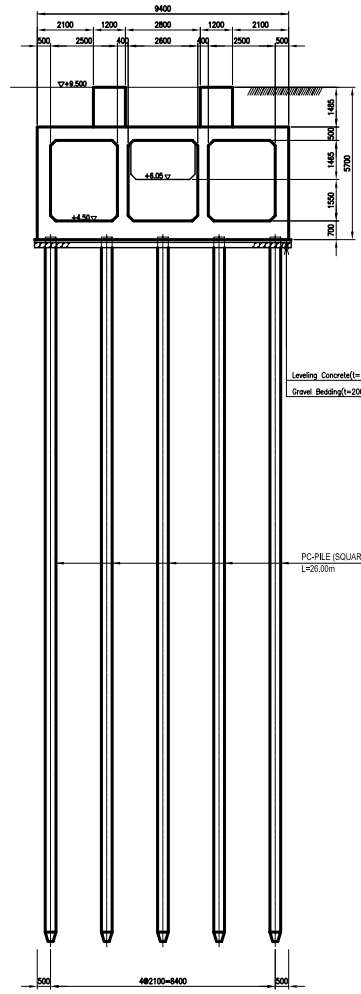




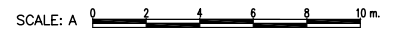
PLAN
SCALE A

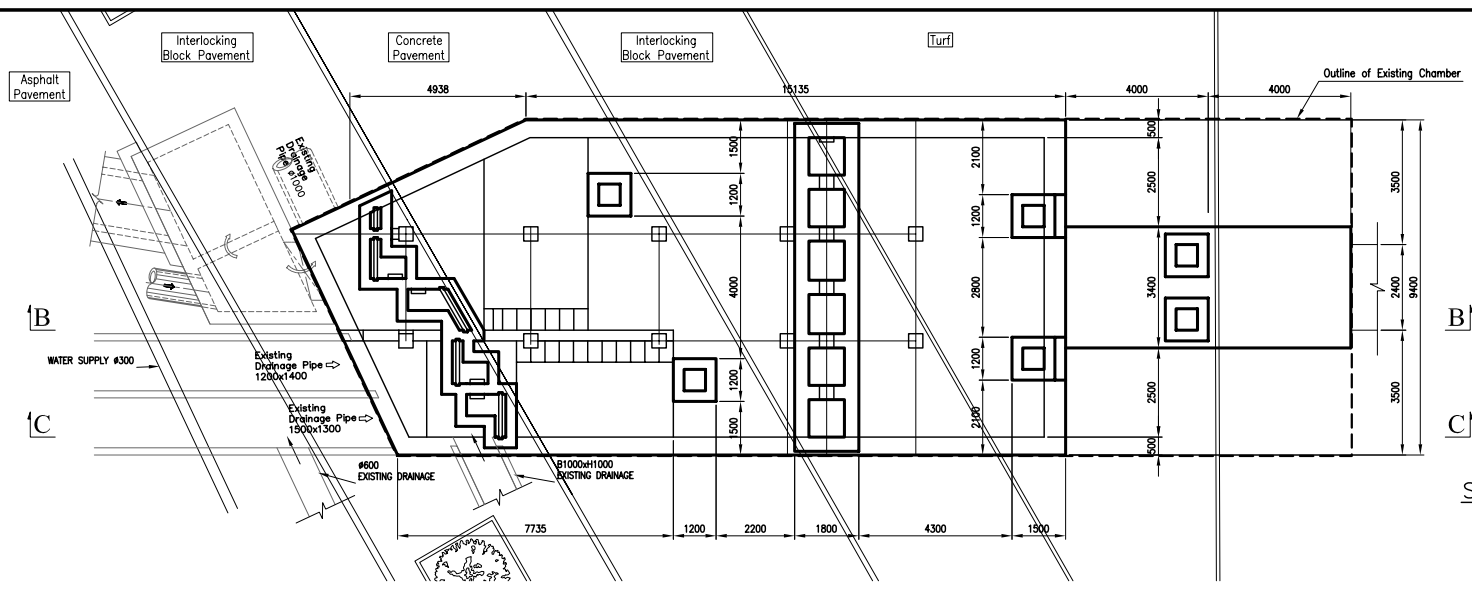


SECTION A-A
SCALE A

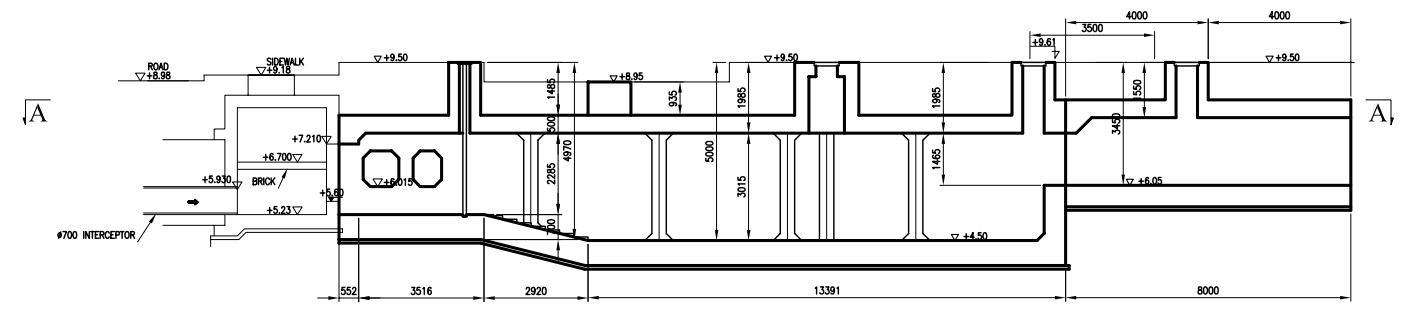


SECTION B-B
SCALE A

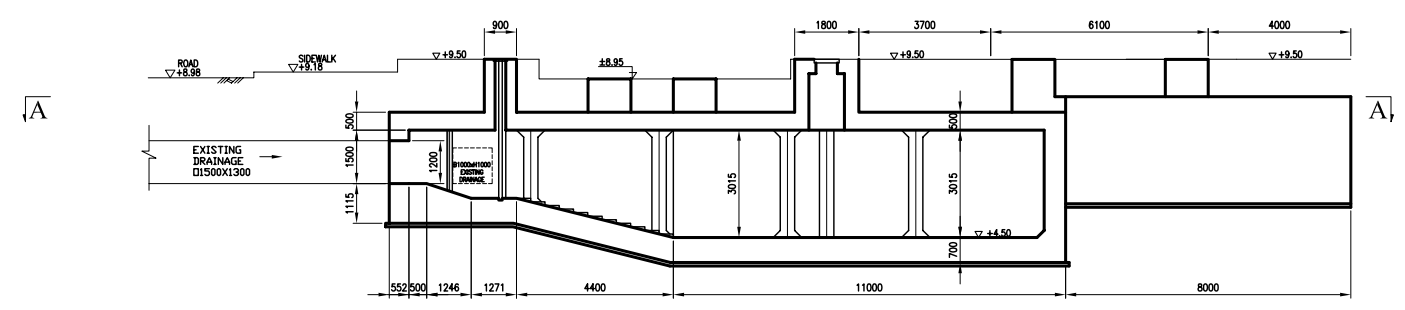




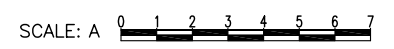
SECTION A-A
SCALE A

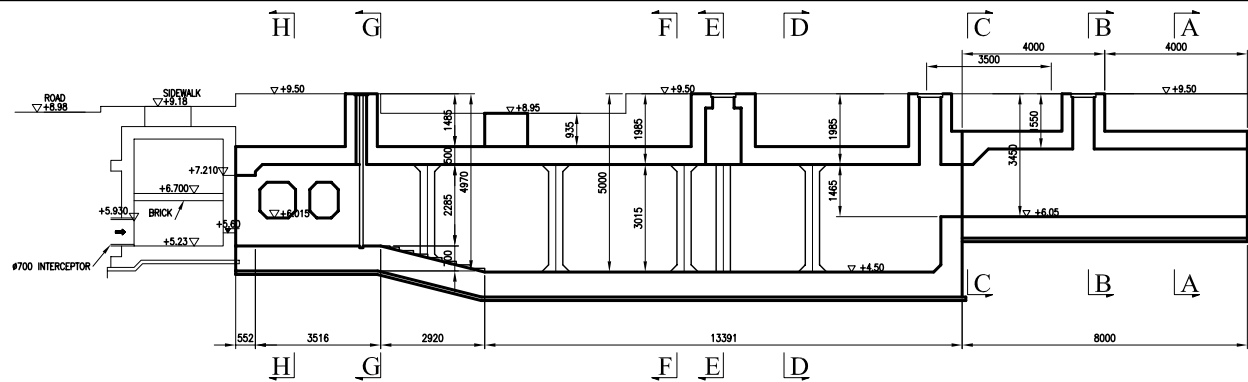


SECTION B-B
SCALE A

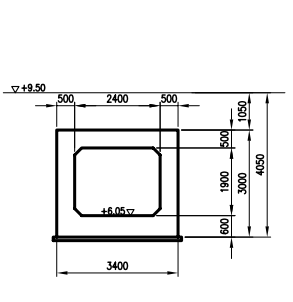


SECTION C-C
SCALE A

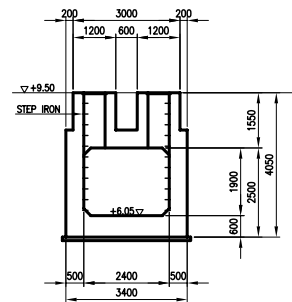




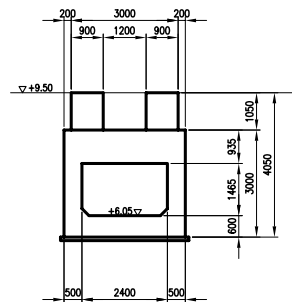
PROFILE
SCALE A



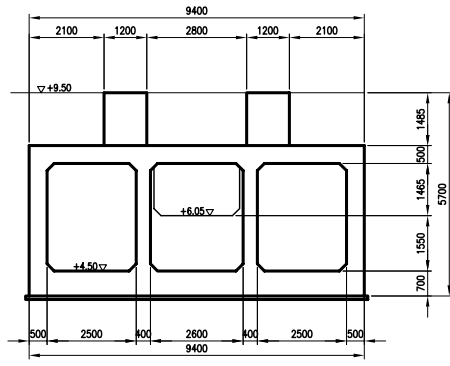
SECTION A-A
SCALE A



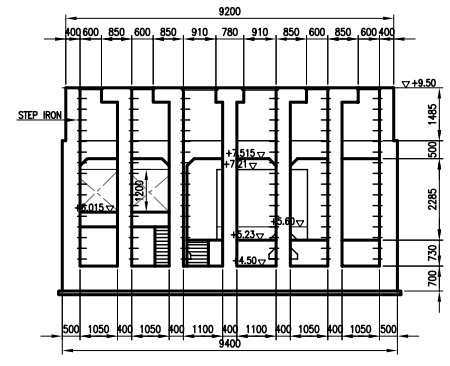
SECTION B-B
SCALE A



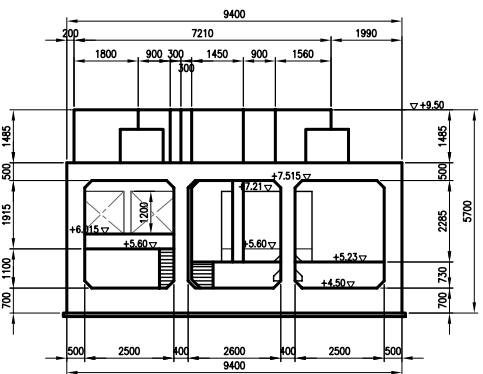
SECTION C-C
SCALE A



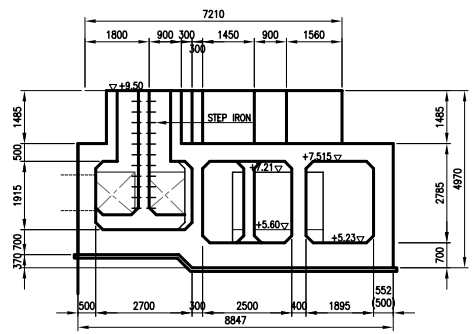
SECTION D-D
SCALE A



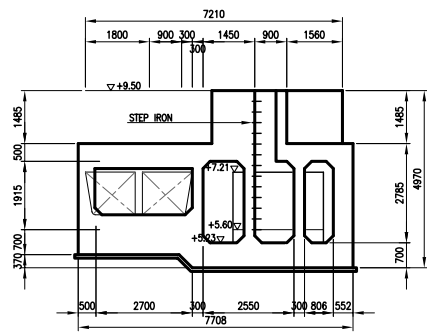
SECTION E-E
SCALE A



SECTION F-F
SCALE A



SECTION G-G
SCALE A



SECTION H-H
SCALE A

