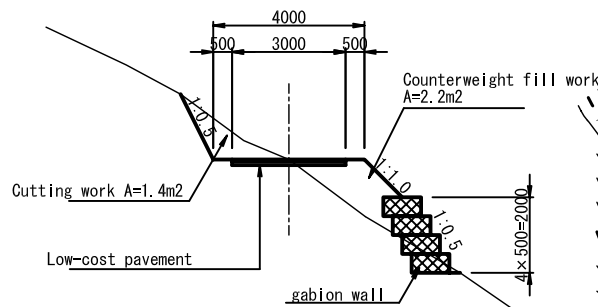
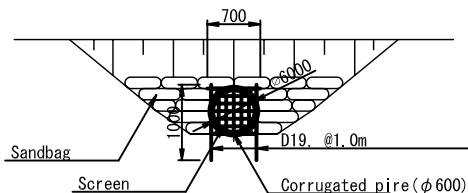


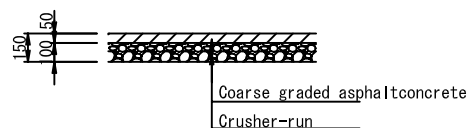
A-A Cross Section S=1:100



Underdrainage S=1:50



Asphalt pavement S=1:20



General Plan site road

Site road W=4.0m L=686.0m i=0~42%. Cutting work V=1171.2m³. Counterweight fill work V=1112.6m³. Gabion wall L=686.0m  
 Asphalt pavement A=1834.8m². Passing place=2Point. Temporary material yard=1Point. Underdrainage (φ600) L=40.0m

Passing place

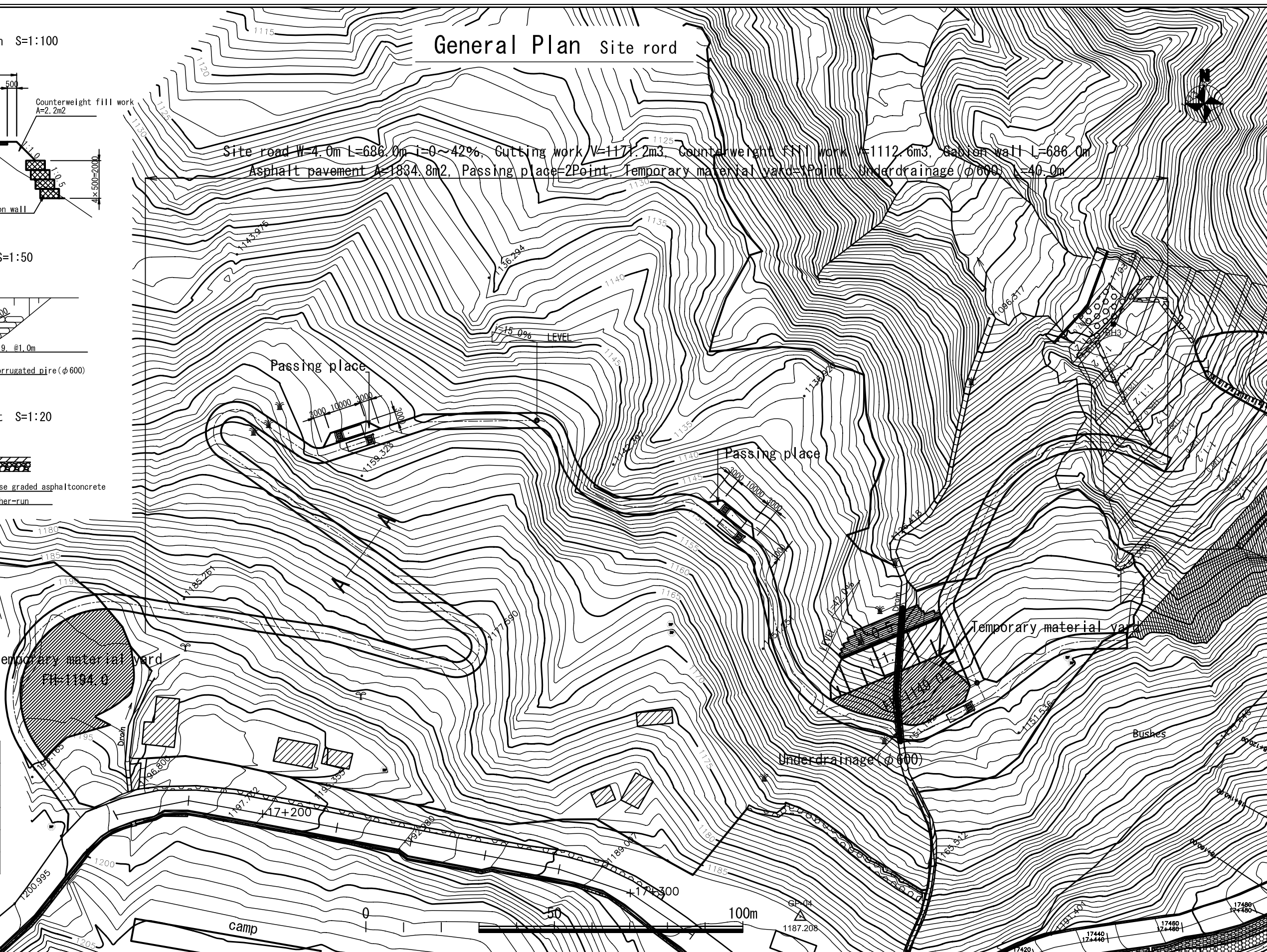
Passing place

Temporary material yard

Temporary material yard

Underdrainage (φ600)

Legend	
	Site road
	Passing place
	Temporary material yard
	Gabion wall
	Slope
	Underdrainage (φ600)



THE DEPARTMENT OF ROADS  
 MINISTRY OF PHYSICAL PLANNING  
 AND WORKS  
 NEPAL

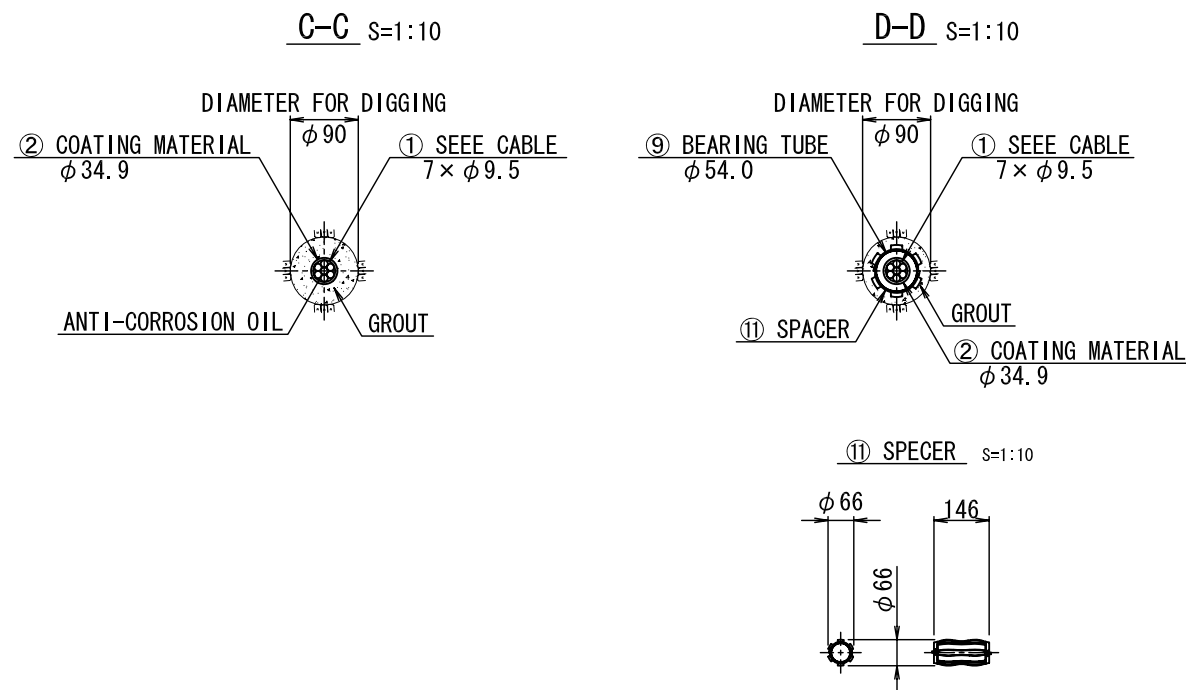
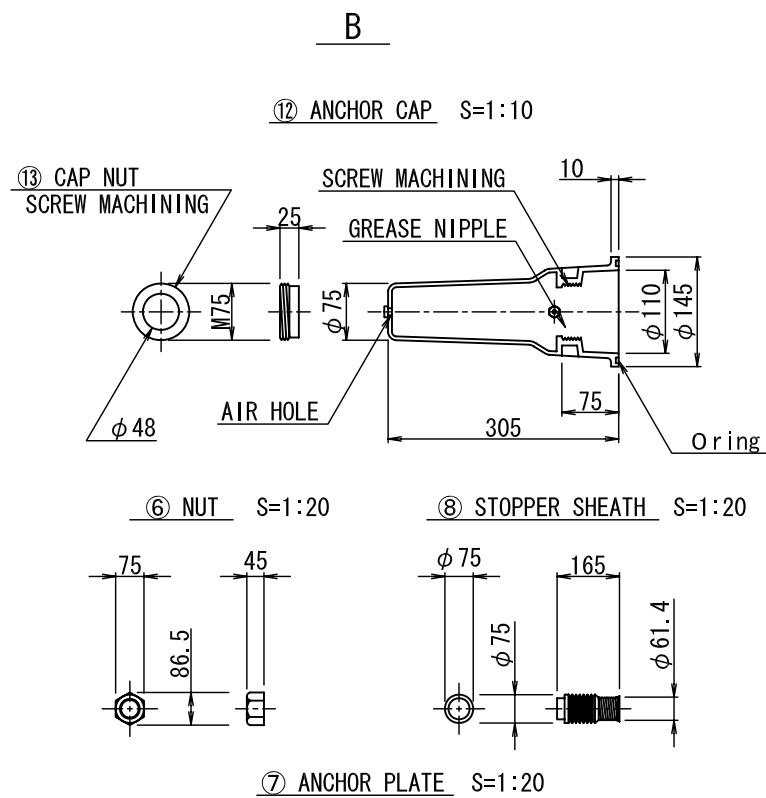
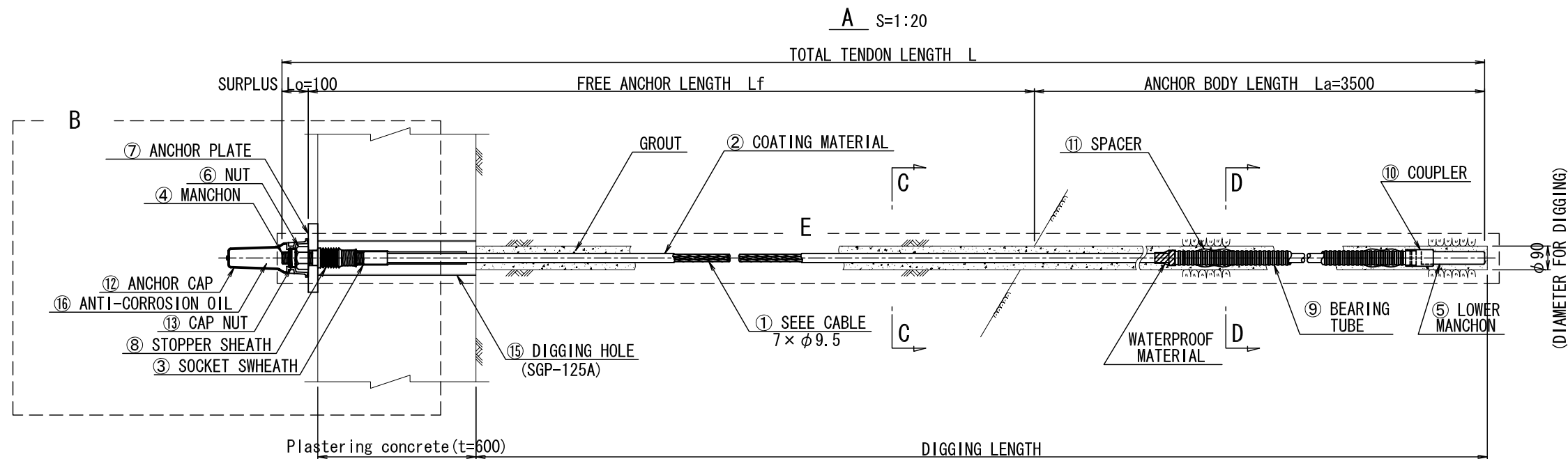
JAPAN INTERNATIONAL COOPERATION AGENCY  
 NIPPON KOEI CO., LTD. (NK)

04		DESIGNED BY	
03		DRAWN BY	
02		ASSISTED BY	
01		RECOMMENDED BY	
REV.	DATE	APPROVED BY	

THE PREPARATORY SURVEY  
 ON THE PROJECT  
 FOR COUNTERMEASURE CONSTRUCTION  
 FOR THE LANDSLIDES  
 ON SINDHULI ROAD (SECTION II)

DATE	DWG.NO.	1:1000
MARCH 2011		26

# STANDARD DRAWING ANCHOR WORKS (F-70UA)



**BILL OF MATERIAL TABLE ANCHOR (PER ONE)**

ITEM	SPECIFICATION	UNIT	QUANTITY	REMARKS
① SEE E CABLE (RUSH-PROOF OIL FILLED)	F70UA (7 × φ 9.5)	set	1	
④ MANCHON	φ 48.0, L=400	number	1	
⑤ LOWER MANCHON	φ 48.0, L=240	number	1	
⑥ NUT	L=75.0, H=45	pieces	1	
⑦ ANCHOR PLATE	PL-260 × 36 × 58	sheet	1	
⑧ STOPPER SHEATH	φ 75, L=165	pieces	1	
⑨ BEARING TUBE	φ 54.0, L=2100	set	1	
⑩ COUPLER	φ 63, L=105	pieces	1	
⑪ SPACER	φ 66, L=146	pieces	2	
⑫ ANCHOR CAP	φ 145, L=305	pieces	1	
⑬ GROUT PIPE	FLAT 10~27	m		
⑮ DIGGING HOLE	SGP-125A	m		
⑯ ANTI-CORROSION OIL		kg	0.96	

THE DEPARTMENT OF ROADS  
MINISTRY OF PHYSICAL PLANNING  
AND WORKS  
NEPAL

JAPAN INTERNATIONAL COOPERATION AGENCY  
**JICA** NIPPON KOEI CO., LTD. (NK)

04			DESIGNED BY	
03			DRAWN BY	
02			ASSISTED BY	
01			RECOMMENDED BY	
REV.	DATE		APPROVED BY	

		DESIGNED BY	
		DRAWN BY	
		ASSISTED BY	
		RECOMMENDED BY	
		APPROVED BY	

THE PREPARATORY SURVEY  
ON THE PROJECT  
FOR COUNTERMEASURE CONSTRUCTION  
FOR THE LANDSLIDES  
ON SINDHULI ROAD (SECTION II)

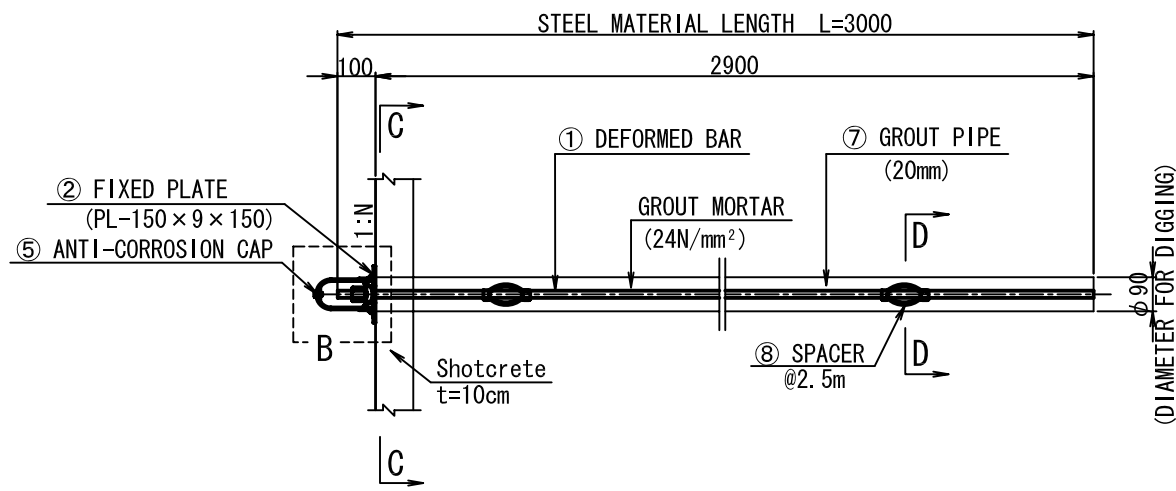
DATE  
MARCH 2011

DWG.NO.  
27

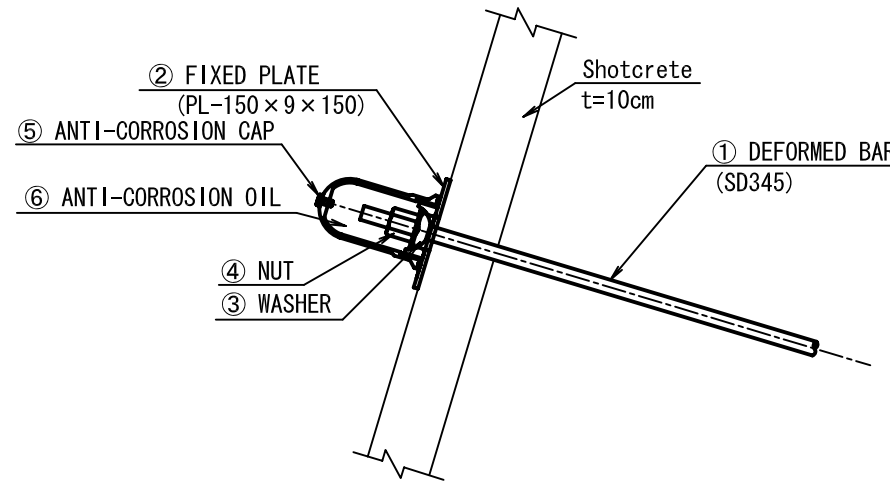
SCALE

# ROCK BOLT (1)

**A DEFORMED BAR (D19) S=1:20**



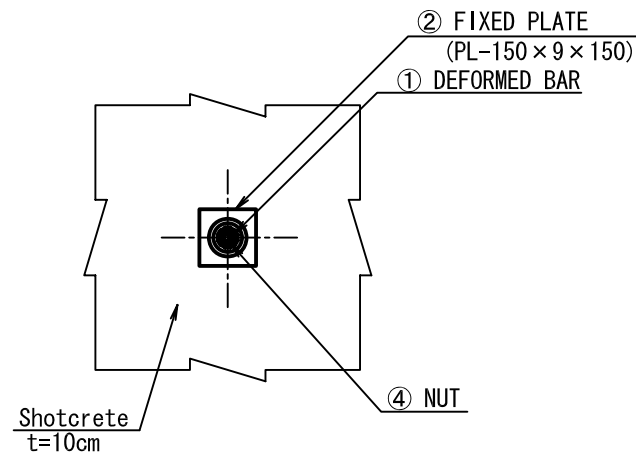
**B ATTACHMENTS S=1:10**



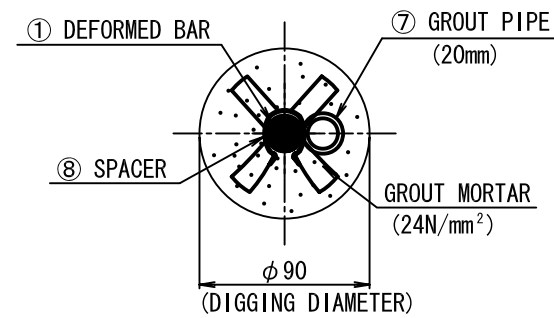
**B ATTACHMENTS (PER ONE)**

ITEM	SPECIFICATION	UNIT	QUANTITY	REMARKS
① DEFORMED BAR	D19 , SD345	mm	3000	
② FIXED PLATE	PL-150×9×150	sheet	1	
③ WASHER	ϕ 76 , H=25	piece	1	
④ NUT	H=40 , D19	piece	1	
⑤ ANTI-CORROSION CAP	H=100	piece	1	
⑥ ANTI-CORROSION OIL		kg	0.38	
⑦ GROUT PIPE	20mm	mm	3000	
⑧ SPACER	ϕ 65 , L=127	piece	2	

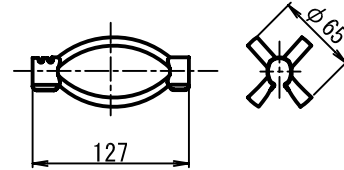
**C-C S=1:20**



**D-D S=1:4**

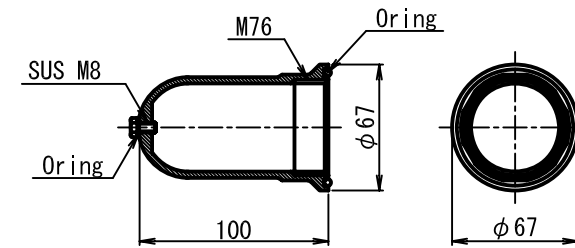


**⑧ SPACER S=1:6**

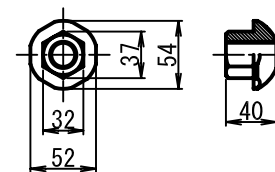


**C DETAIL ATTACHMENT**

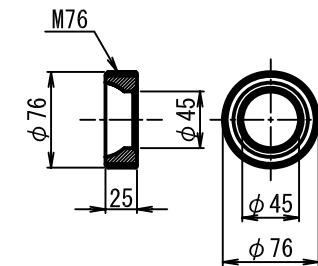
**⑤ ANTI-CORROSION CAP S=1:4**



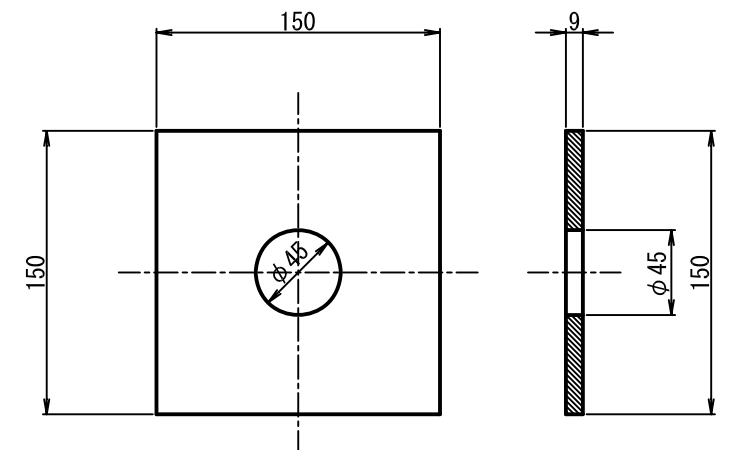
**④ NUT S=1:6**



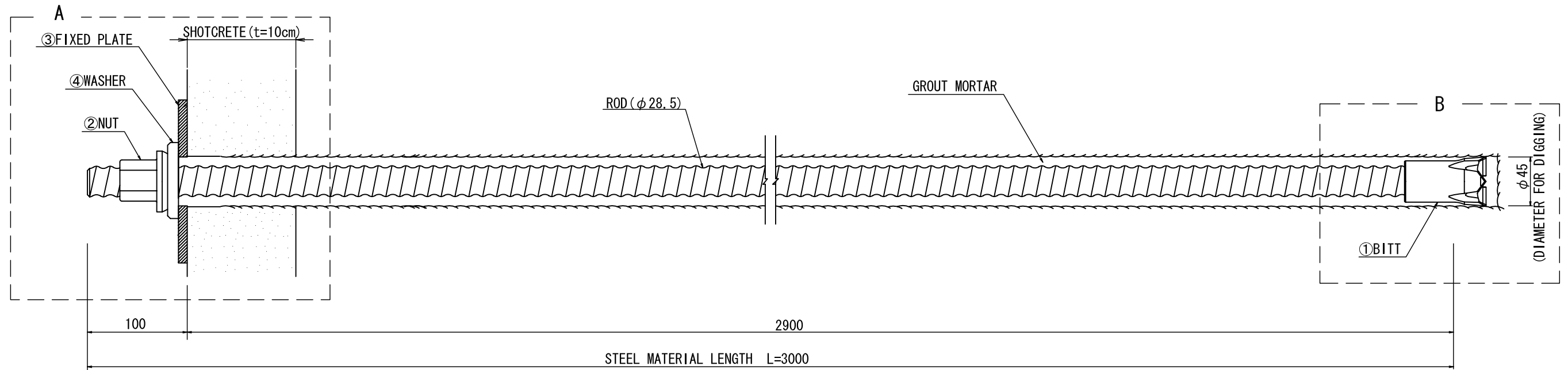
**③ WASHER S=1:6**



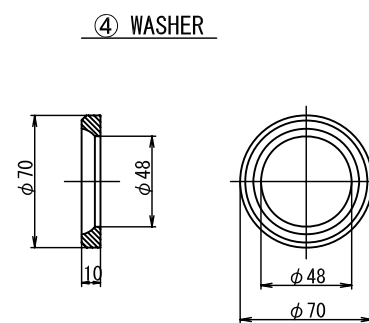
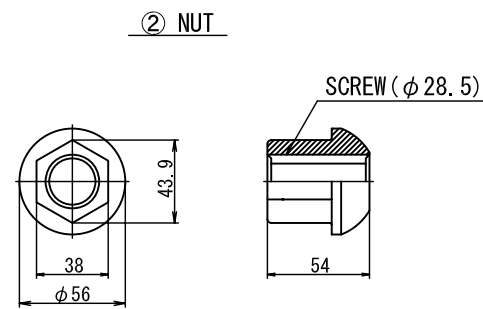
**② FIXED PLATE S=1:4**



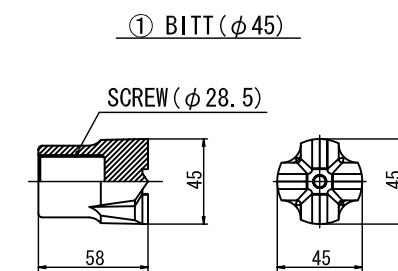
# ROCK BOLT (2)



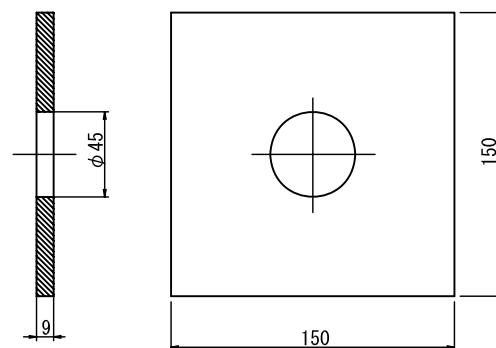
## A ATTACHMENTS



## B ATTACHMENT



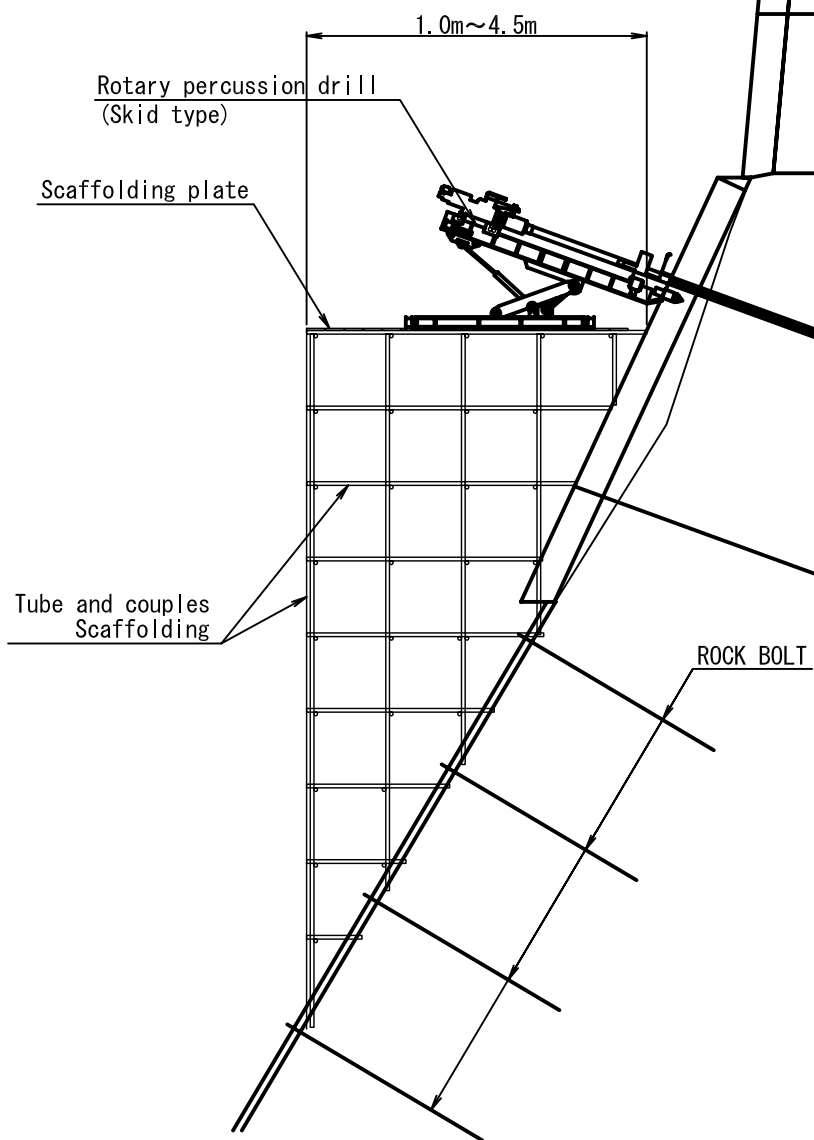
## ③ FIXED PLATE



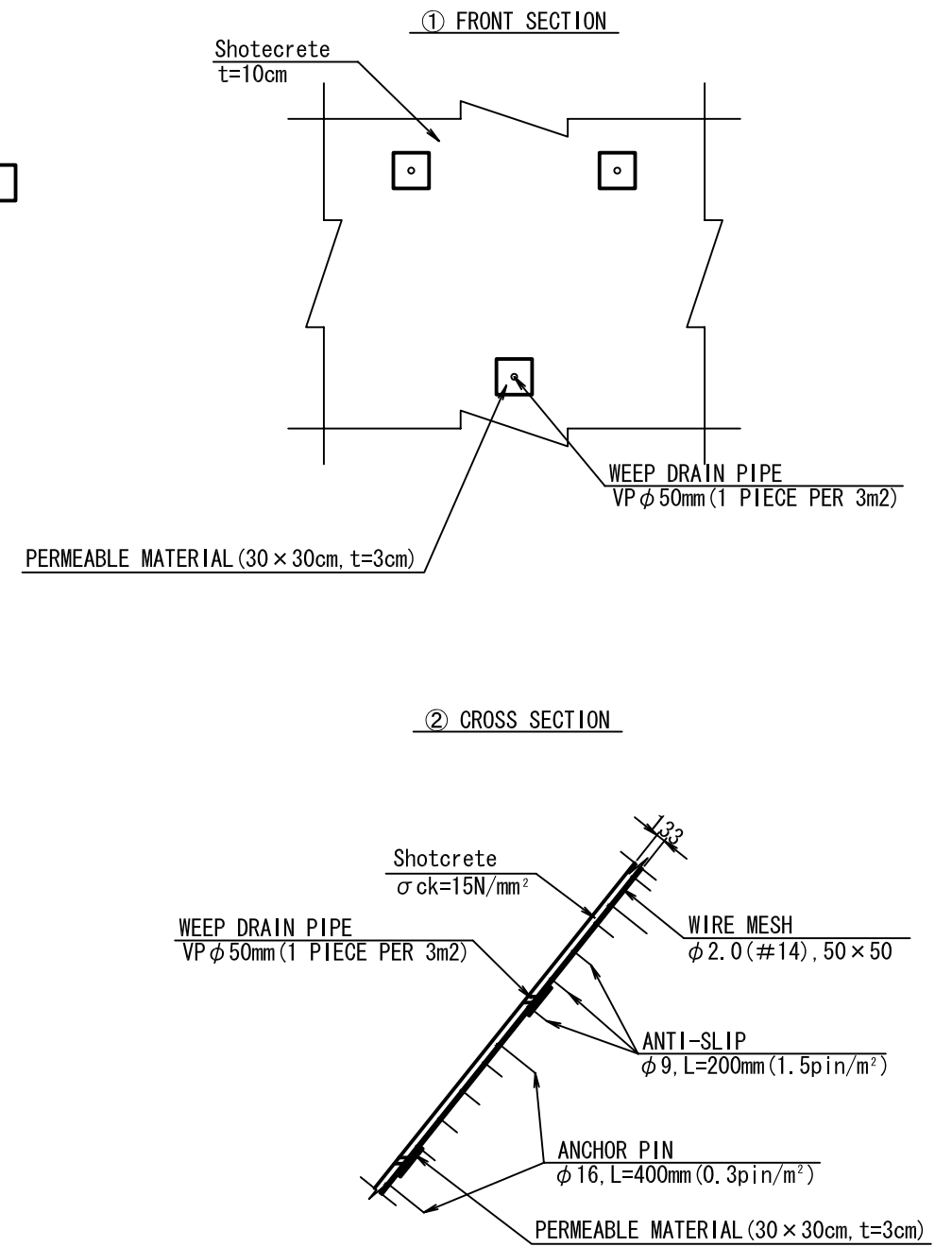
04		DESIGNED BY	
03		DRAWN BY	
02		ASSISTED BY	
01		RECOMMENDED BY	
REV.	DATE	APPROVED BY	

# SLOPE WORKS

## A SCAFFOLDING



## B SHOTCRETE S=1:60



THE DEPARTMENT OF ROADS  
MINISTRY OF PHYSICAL PLANNING  
AND WORKS  
NEPAL

JAPAN INTERNATIONAL COOPERATION AGENCY  
**JICA** NIPPON KOEI CO., LTD. (NK)

04		DESIGNED BY	
03		DRAWN BY	
02		ASSISTED BY	
01		RECOMMENDED BY	
REV.	DATE	APPROVED BY	

THE PREPARATORY SURVEY  
ON THE PROJECT  
FOR COUNTERMEASURE CONSTRUCTION  
FOR THE LANDSLIDES  
ON SINDHULI ROAD (SECTION II)

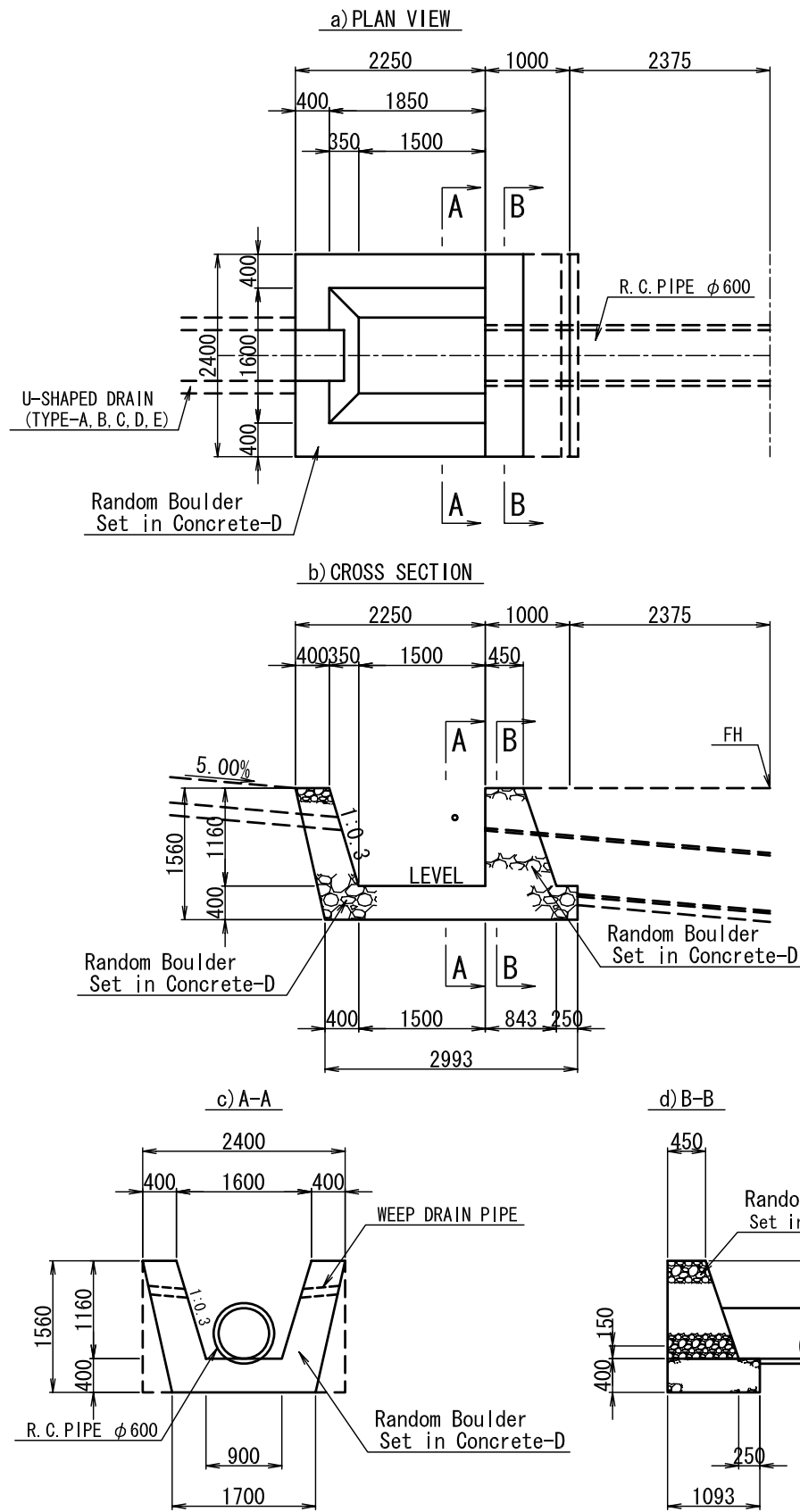
DATE  
MARCH 2011

DWG.NO.

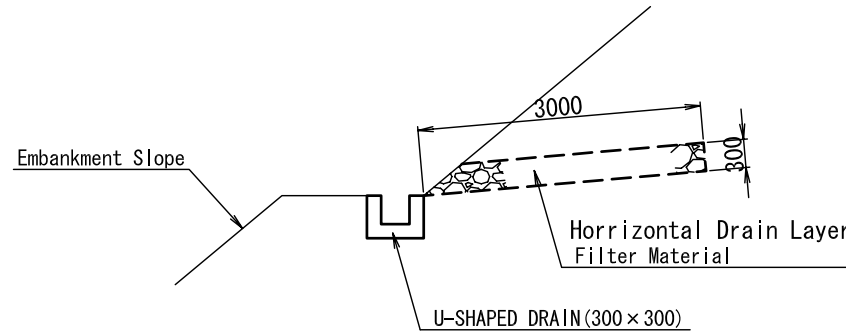
SCALE  
30

# DRAINAGE STRUCTURES

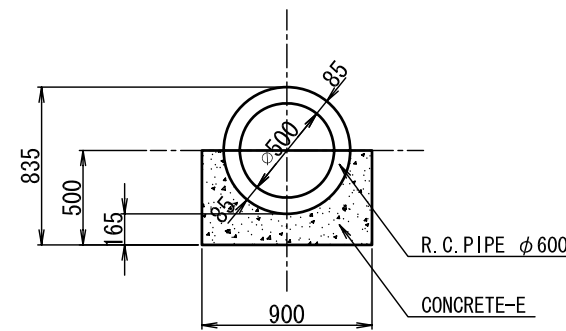
(1) CATCH BASIN TYPE-(CB-1) S=1:80  
(for  $\phi 600 \times 1$ )



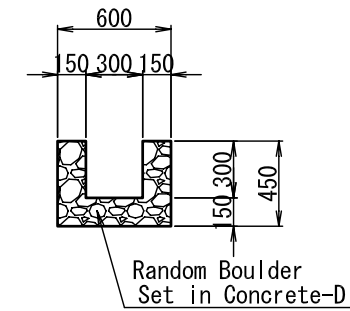
(2) FRANCH DRAIN (FD-D) S=1:80



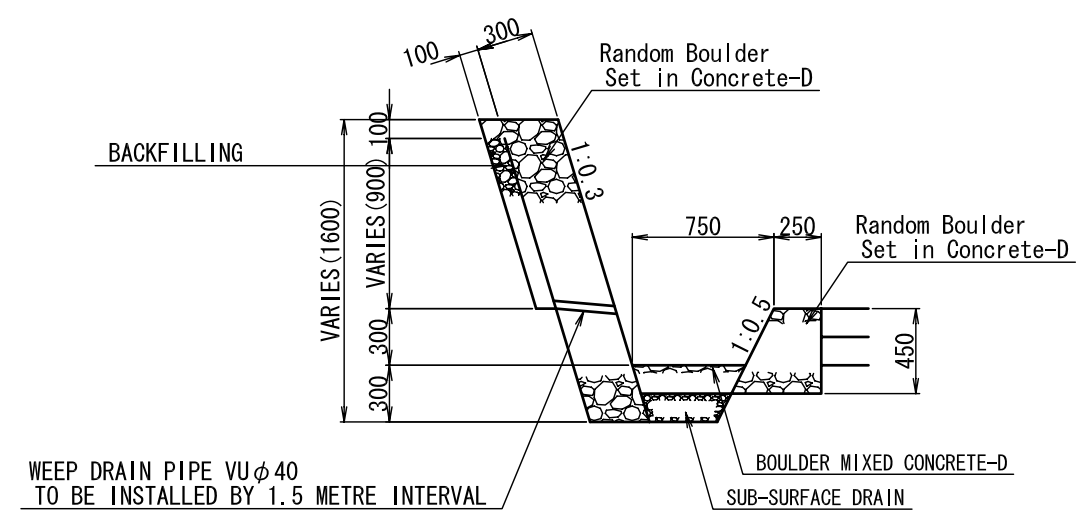
(4) PIPE CULVERT ( $\phi 600$ ) (CON, 180°) S=1:40



(3) U-SHAPED DRAIN (300 x 300) (UD-A) S=1:40



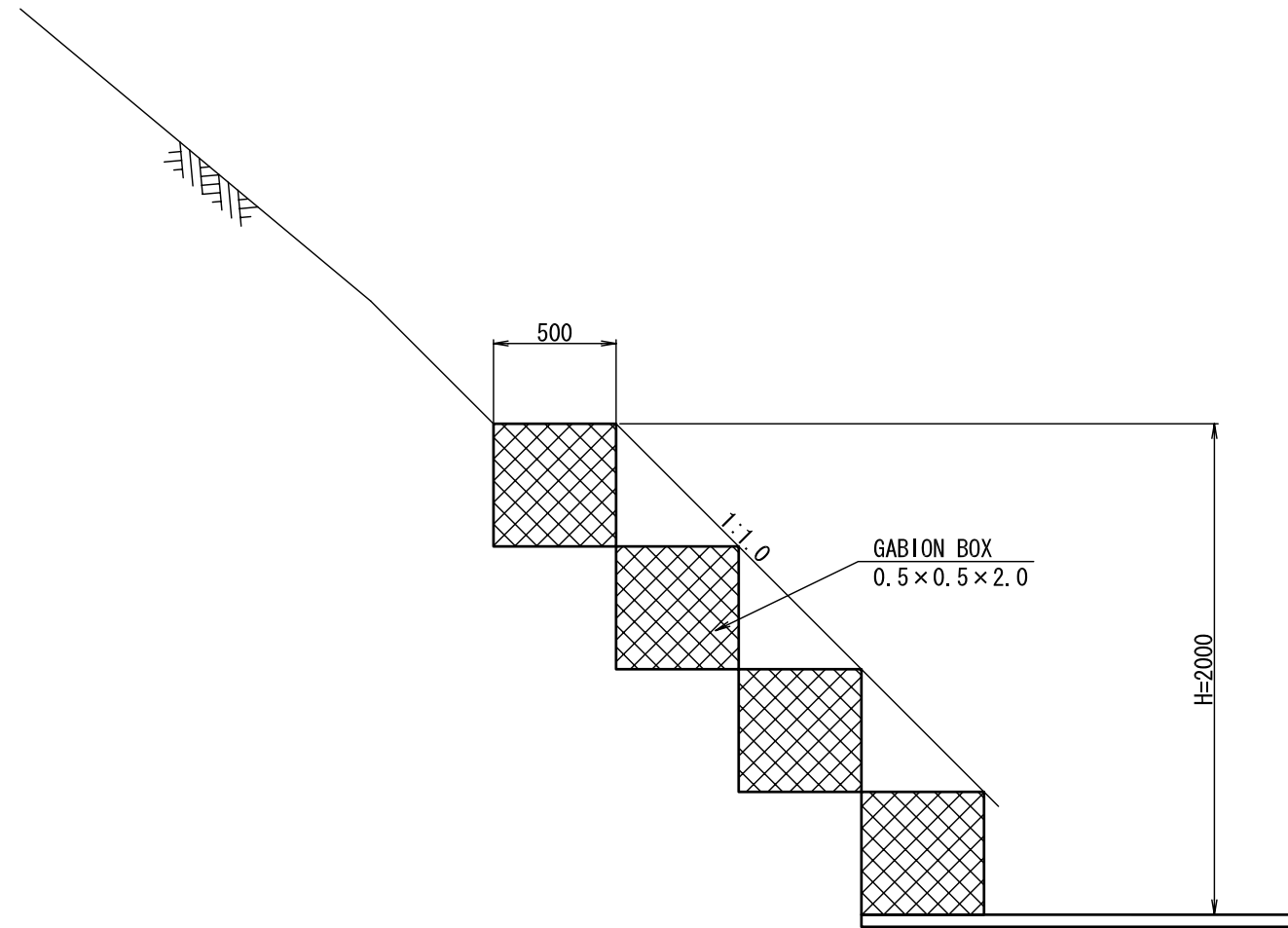
(5) SIDE DITCH-B (SD-B) S=1:40



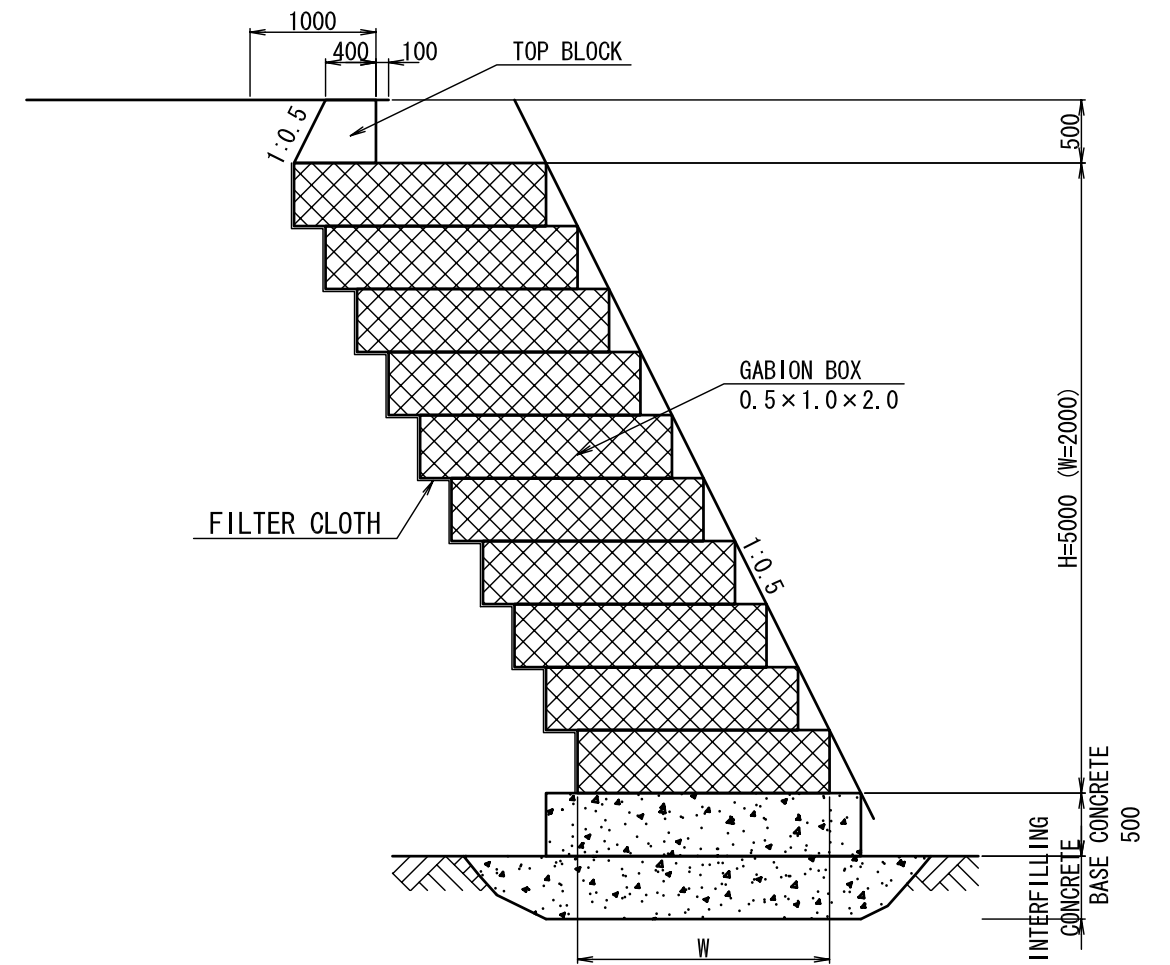
04		DESIGNED BY	
03		DRAWN BY	
02		ASSISTED BY	
01		RECOMMENDED BY	
REV.	DATE	APPROVED BY	

# GABION WALL

(1) GABION WALL S=1:30  
(STA17+600 SLOPE)



(2) GABION WALL S=1:60  
(CHECK DAM)



THE DEPARTMENT OF ROADS  
MINISTRY OF PHYSICAL PLANNING  
AND WORKS  
NEPAL

JAPAN INTERNATIONAL COOPERATION AGENCY  
**JICA** NIPPON KOEI CO., LTD. (NK)

04		DESIGNED BY	
03		DRAWN BY	
02		ASSISTED BY	
01		RECOMMENDED BY	
REV.	DATE	APPROVED BY	

THE PREPARATORY SURVEY  
ON THE PROJECT  
FOR COUNTERMEASURE CONSTRUCTION  
FOR THE LANDSLIDES  
ON SINDHULI ROAD (SECTION II)

DATE  
MARCH 2011

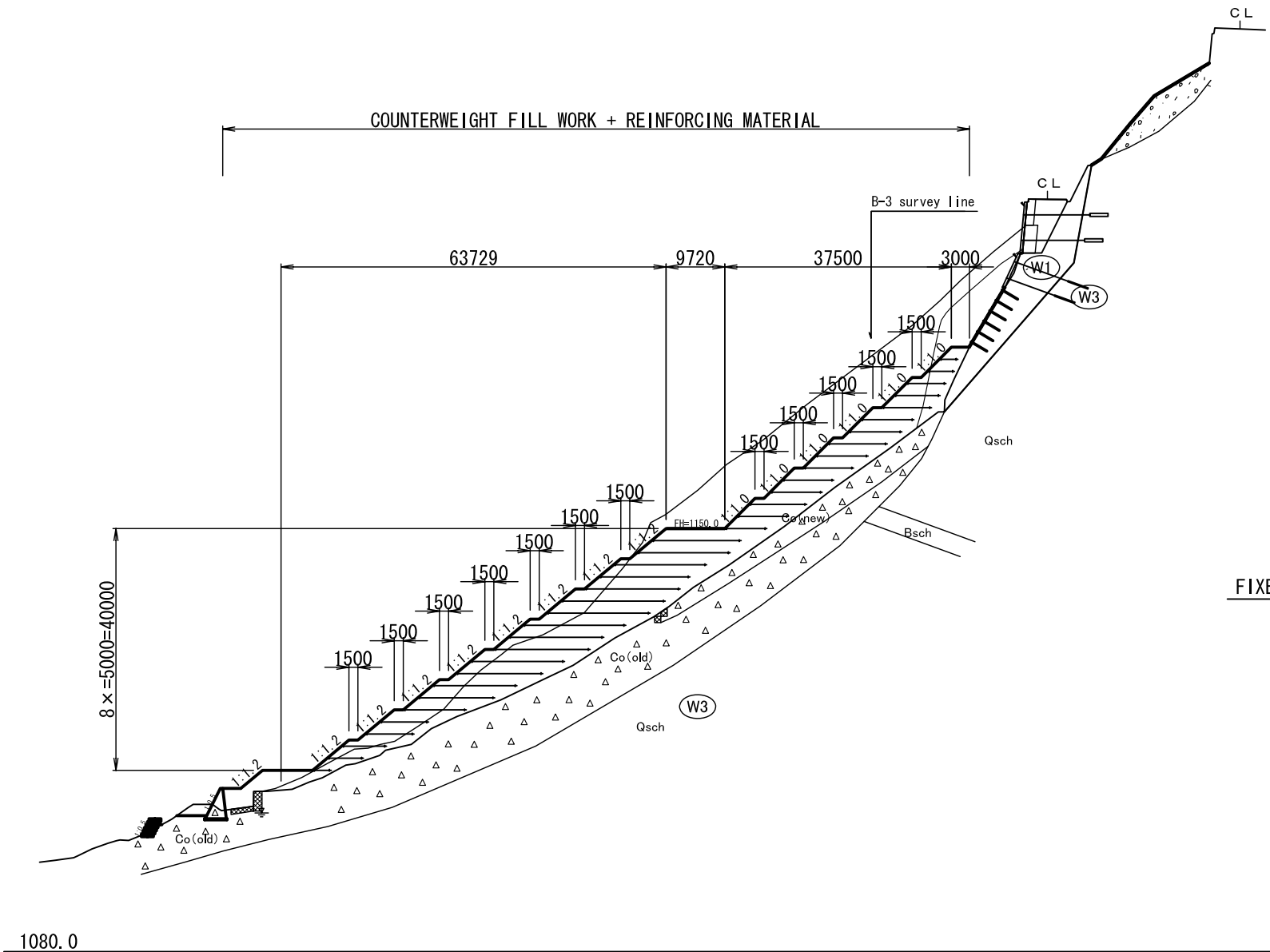
DWG.NO.

SCALE

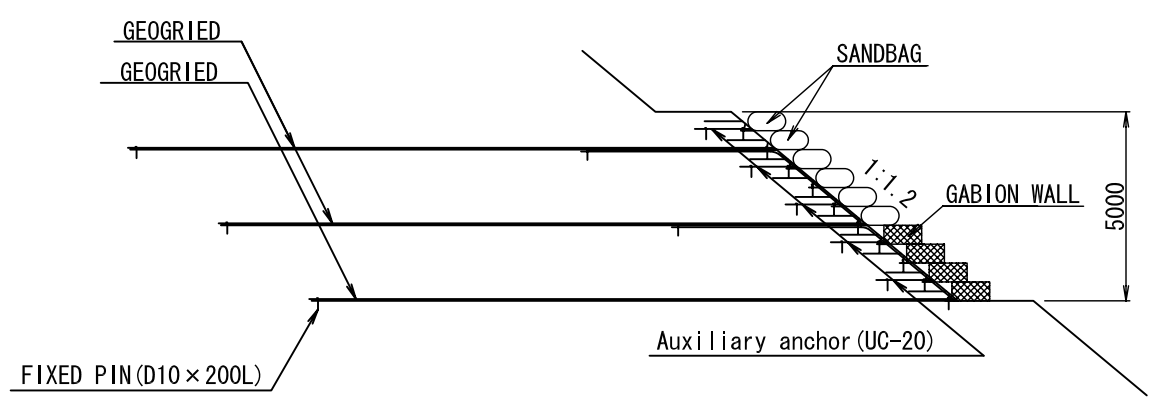
32

# REINFORCEMENT BANK

SECTION S=1:1000



DETAILS S=1:200



THE DEPARTMENT OF ROADS  
MINISTRY OF PHYSICAL PLANNING  
AND WORKS  
NEPAL

JAPAN INTERNATIONAL COOPERATION AGENCY  
**JICA** NIPPON KOEI CO., LTD. (NK)

04		DESIGNED BY	
03		DRAWN BY	
02		ASSISTED BY	
01		RECOMMENDED BY	
REV.	DATE	APPROVED BY	

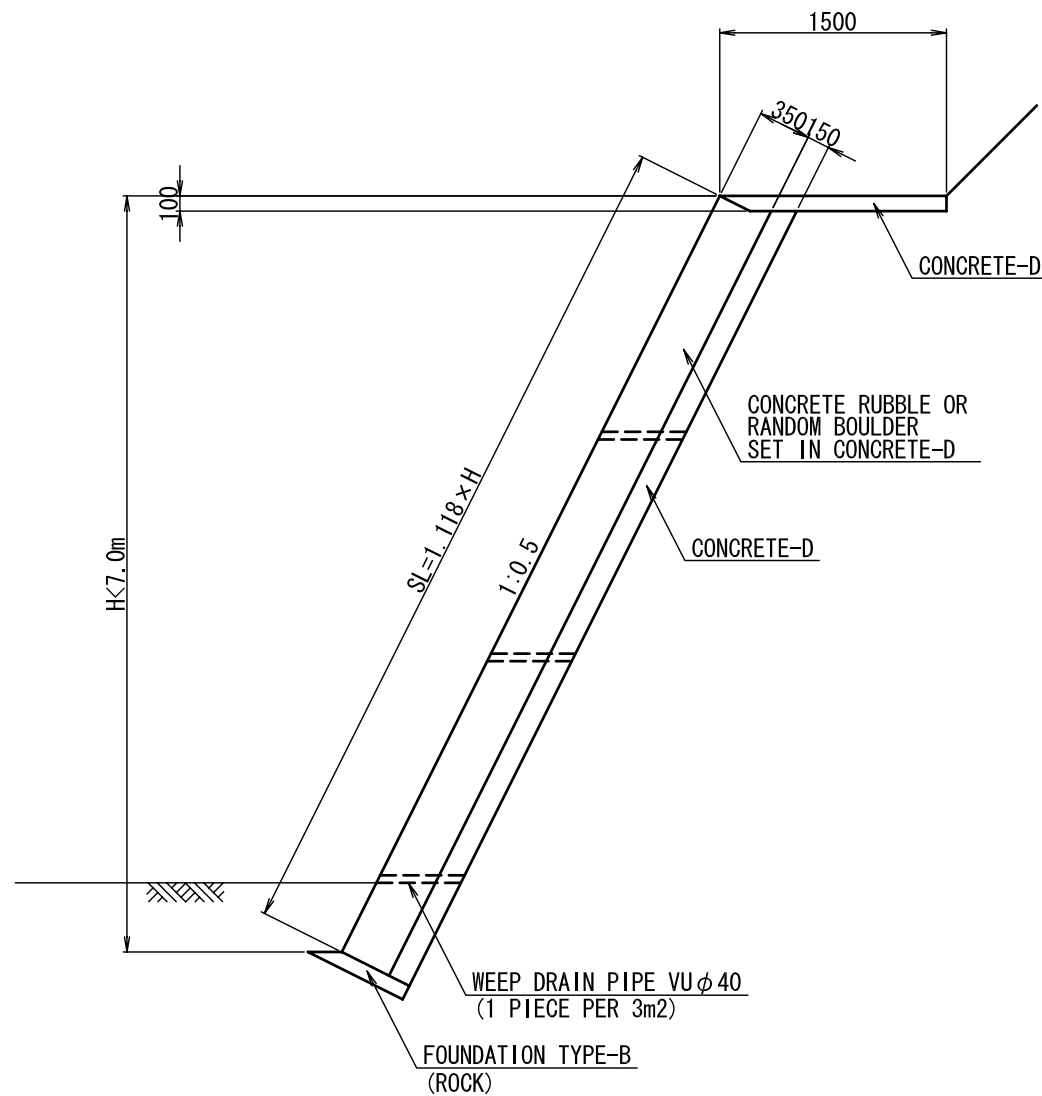
THE PREPARATORY SURVEY  
ON THE PROJECT  
FOR COUNTERMEASURE CONSTRUCTION  
FOR THE LANDSLIDES  
ON SINDHULI ROAD (SECTION II)

		SCALE	
DATE	DWG.NO.		
MARCH 2011	33		

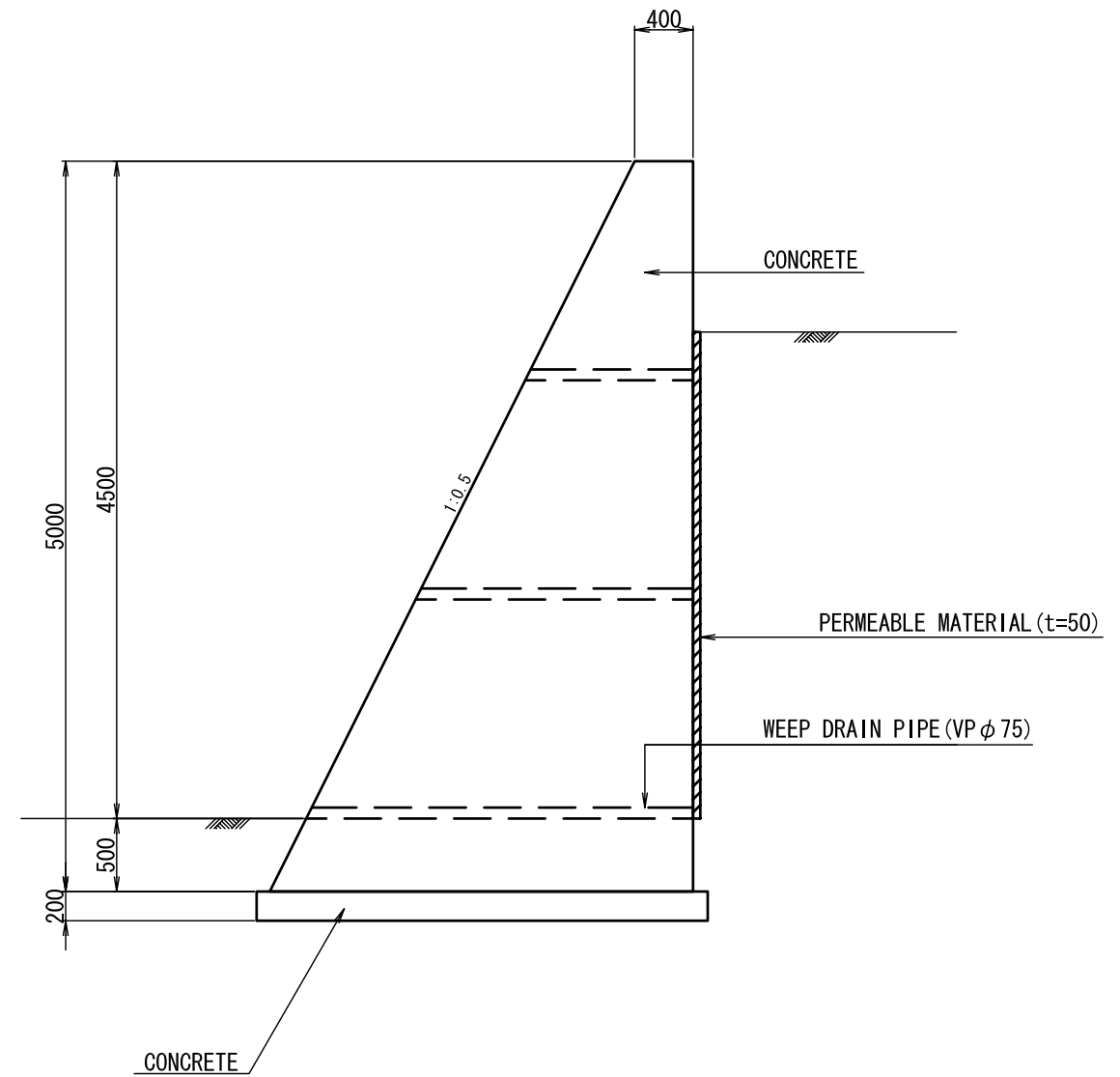


# RETAINING WALLS

(1) MASONRY RETAINING WALL



(2) GRAVITY-TYPE RETAINING WALL



THE DEPARTMENT OF ROADS  
MINISTRY OF PHYSICAL PLANNING  
AND WORKS  
NEPAL

JAPAN INTERNATIONAL COOPERATION AGENCY  
**JICA** NIPPON KOEI CO., LTD. (NK)

04		DESIGNED BY	
03		DRAWN BY	
02		ASSISTED BY	
01		RECOMMENDED BY	
REV.	DATE	APPROVED BY	

THE PREPARATORY SURVEY  
ON THE PROJECT  
FOR COUNTERMEASURE CONSTRUCTION  
FOR THE LANDSLIDES  
ON SINDHULI ROAD (SECTION II)

DATE  
MARCH 2011

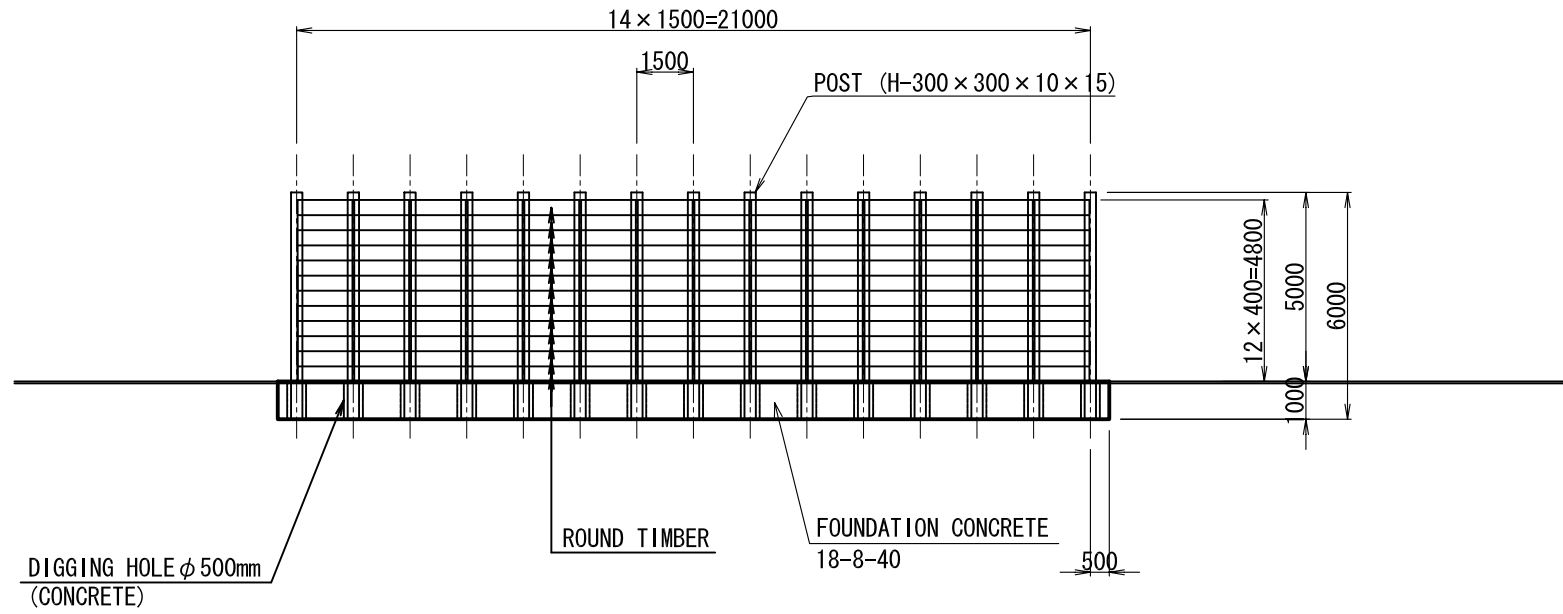
DWG.NO.

34

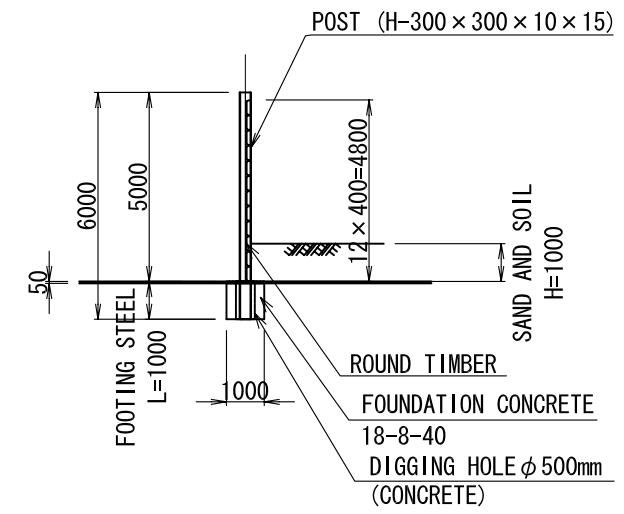
1:500

# TENTATIVE PROTECTION FENCE

(1) ELEVATION VIEW

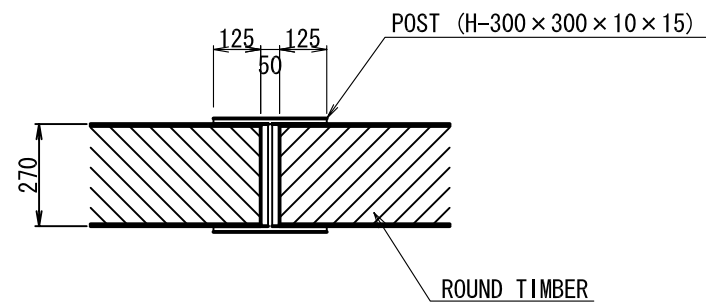


(3) CROSS SECTION



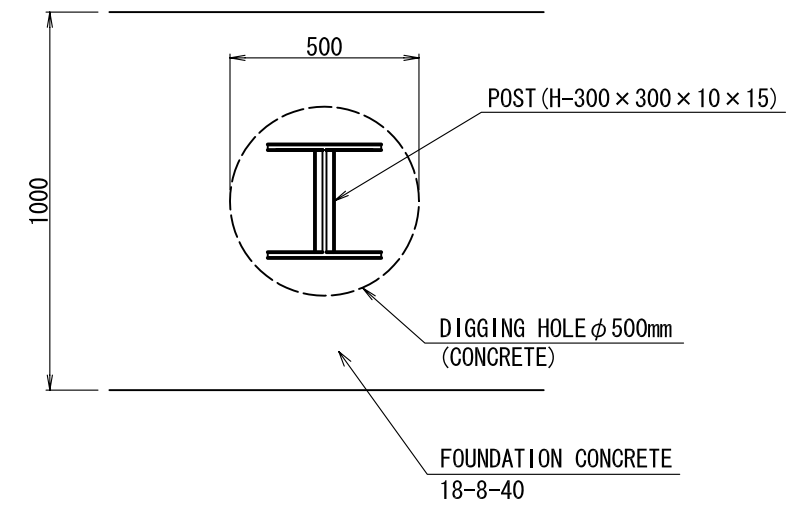
(2) DETAIL OF JOINT S=1:20

PLANE VIEW




(4) DETAIL OF FOUNDATION S=1:20

PLANE VIEW



THE DEPARTMENT OF ROADS  
 MINISTRY OF PHYSICAL PLANNING  
 AND WORKS  
 NEPAL

JAPAN INTERNATIONAL COOPERATION AGENCY  
 NIPPON KOEI CO., LTD. (NK)

04		DESIGNED BY	
03		DRAWN BY	
02		ASSISTED BY	
01		RECOMMENDED BY	
REV.	DATE	APPROVED BY	

THE PREPARATORY SURVEY  
 ON THE PROJECT  
 FOR COUNTERMEASURE CONSTRUCTION  
 FOR THE LANDSLIDES  
 ON SINDHULI ROAD (SECTION II)

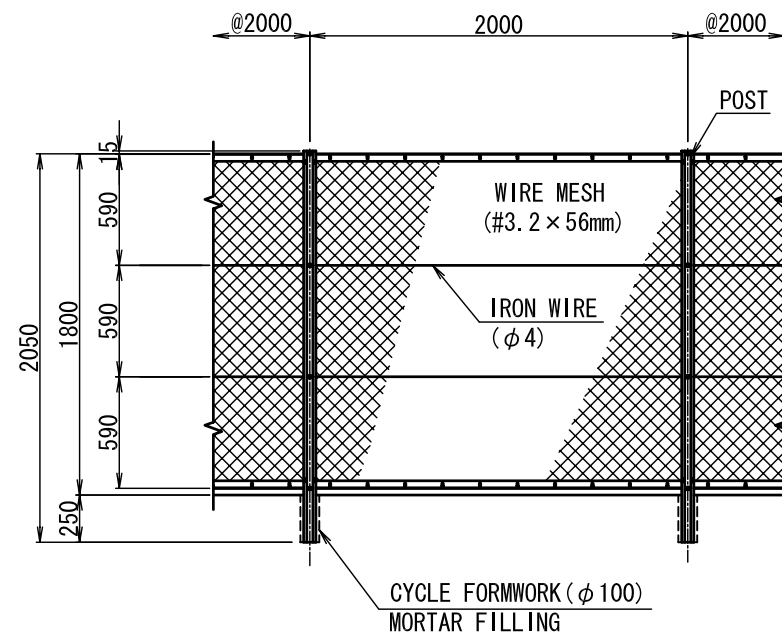
DATE  
 MARCH 2011

DWG.NO.  
 35

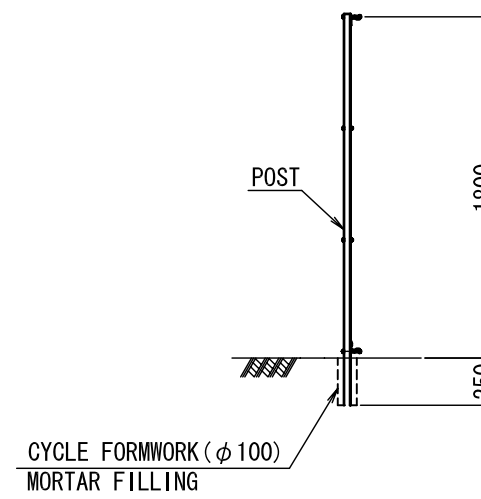
1:200

# GUARD FENCE

(1) FRONT SECTION



(2) CROSS SECTION



THE DEPARTMENT OF ROADS  
MINISTRY OF PHYSICAL PLANNING  
AND WORKS  
NEPAL

JAPAN INTERNATIONAL COOPERATION AGENCY  
**JICA** NIPPON KOEI CO., LTD. (NK)

04		DESIGNED BY	
03		DRAWN BY	
02		ASSISTED BY	
01		RECOMMENDED BY	
REV.	DATE	APPROVED BY	

THE PREPARATORY SURVEY  
ON THE PROJECT  
FOR COUNTERMEASURE CONSTRUCTION  
FOR THE LANDSLIDES  
ON SINDHULI ROAD (SECTION II)

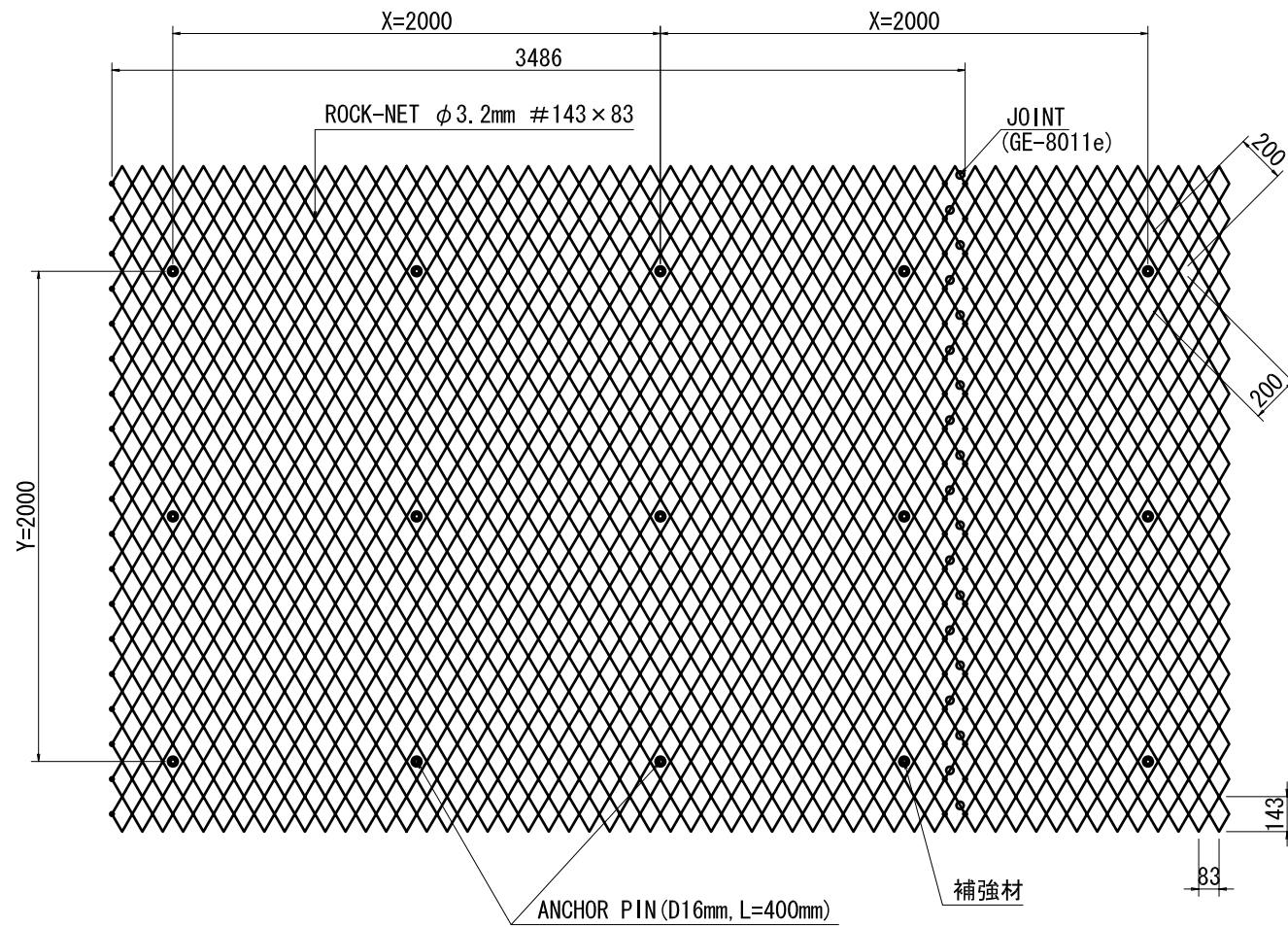
DATE  
MARCH 2011

DWG.NO.  
36

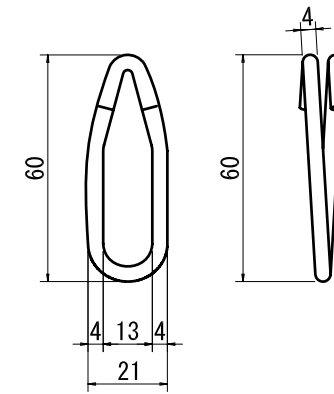
1:40

# ROCK-NET

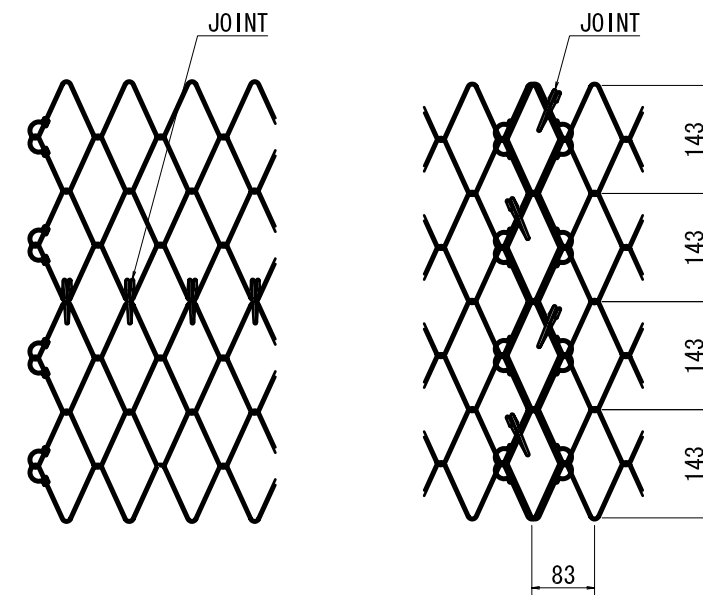
(1) ROCK-NET S=1:30



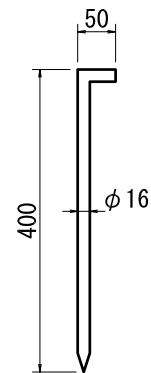
(2) JOINT PARTS S=1:2



(3) SAMPLE FOR JOINT S=1:10



(4) ANCHOR PIN S=1:10



THE DEPARTMENT OF ROADS  
MINISTRY OF PHYSICAL PLANNING  
AND WORKS  
NEPAL

JAPAN INTERNATIONAL COOPERATION AGENCY  
**JICA** NIPPON KOEI CO., LTD. (NK)

04		DESIGNED BY	
03		DRAWN BY	
02		ASSISTED BY	
01		RECOMMENDED BY	
REV.	DATE	APPROVED BY	

THE PREPARATORY SURVEY  
ON THE PROJECT  
FOR COUNTERMEASURE CONSTRUCTION  
FOR THE LANDSLIDES  
ON SINDHULI ROAD (SECTION II)

DATE  
MARCH 2011

DWG.NO.

37

SCALE