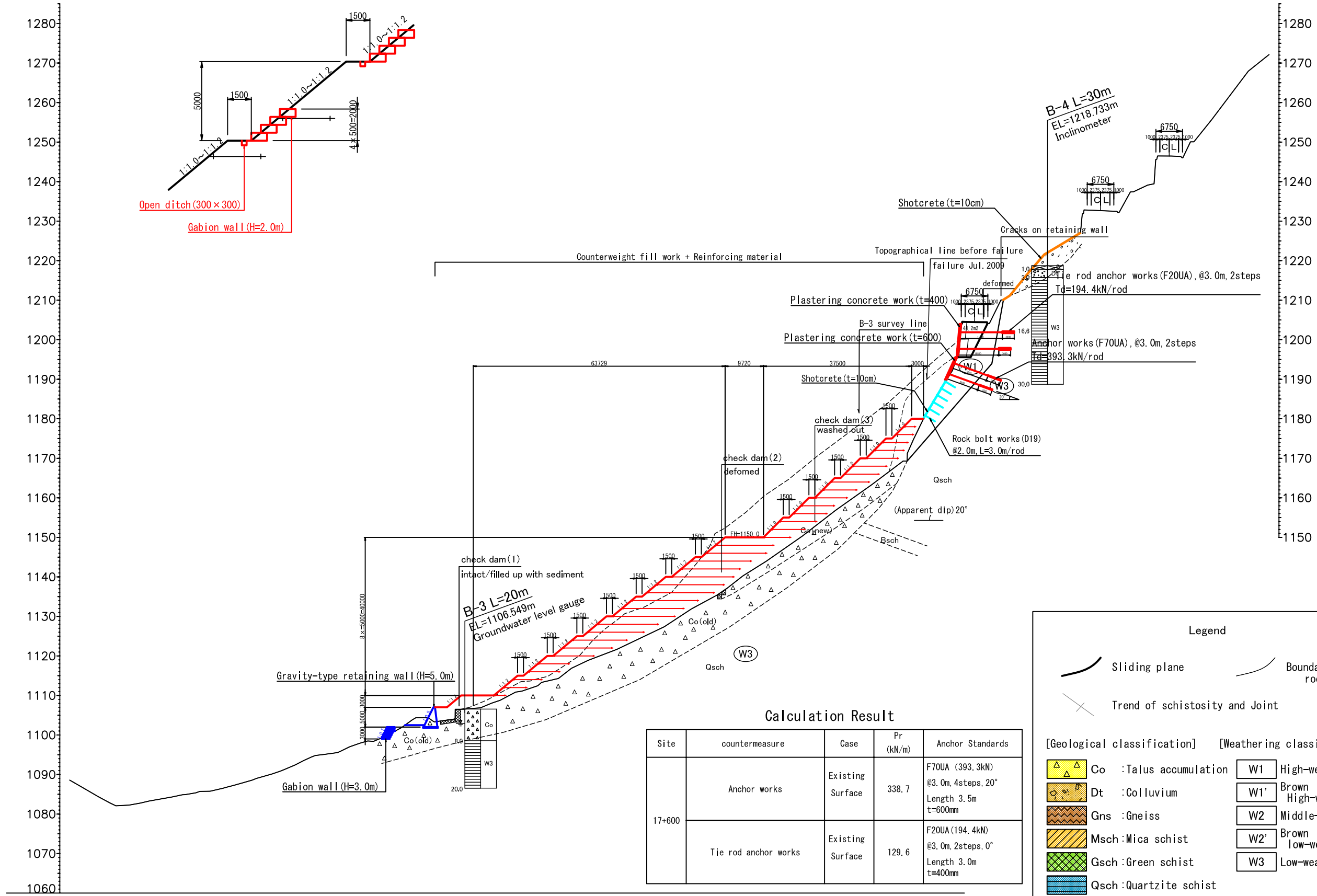


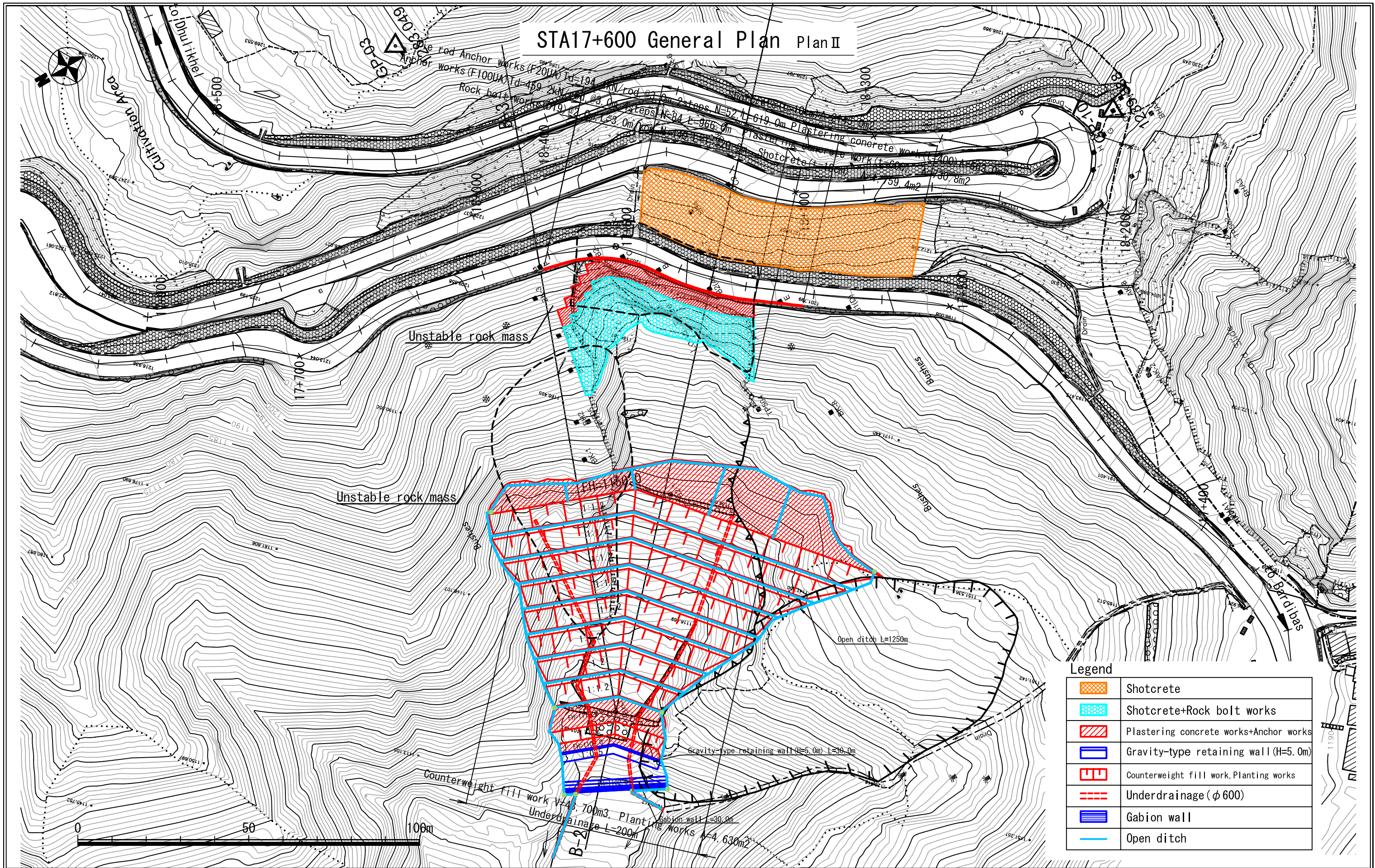
# Cross Section B-2 Plan I

## DETAILS





# STA17+600 General Plan Plan II



Legend	
	Shotcrete
	Shotcrete+Rock bolt works
	Plastering concrete works+Anchor works
	Gravity-type retaining wall (H=5.0m)
	Counterweight fill work, Planting works
	Underdrainage (φ 600)
	Gabion wall
	Open ditch

THE DEPARTMENT OF ROADS  
MINISTRY OF PHYSICAL PLANNING  
AND WORKS  
NEPAL

JAPAN INTERNATIONAL COOPERATION AGENCY  
 NIPPON KOEI CO., LTD. (NK)

04	
03	
02	
01	
REV.	DATE

DESIGNED BY	
DRAWN BY	
ASSISTED BY	
RECOMMENDED BY	
APPROVED BY	

THE PREPARATORY SURVEY  
ON THE PROJECT  
FOR COUNTERMEASURE CONSTRUCTION  
FOR THE LANDSLIDES  
ON SINDHULI ROAD (SECTION II)

DATE  
MARCH 2011

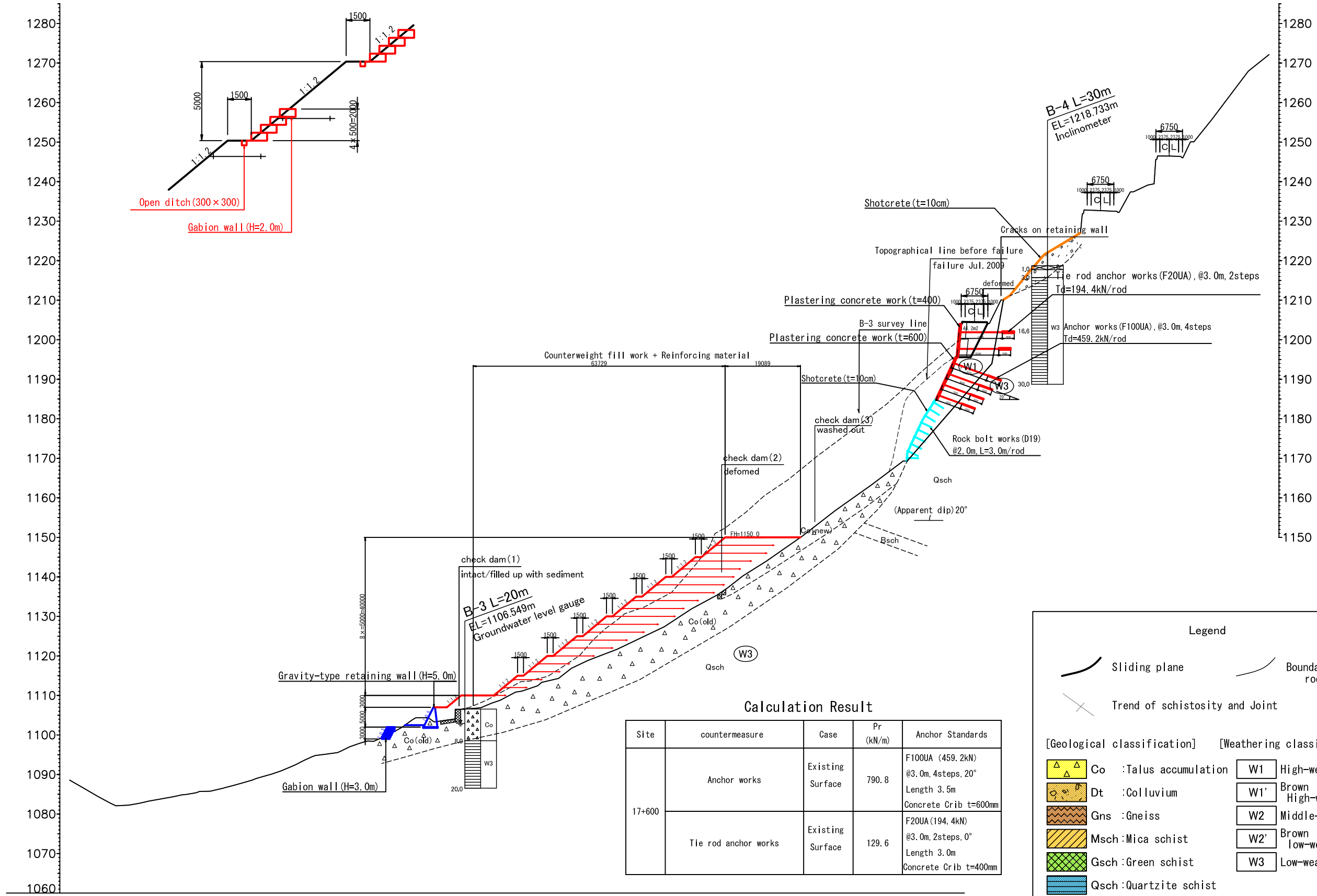
DWG.NO.

13

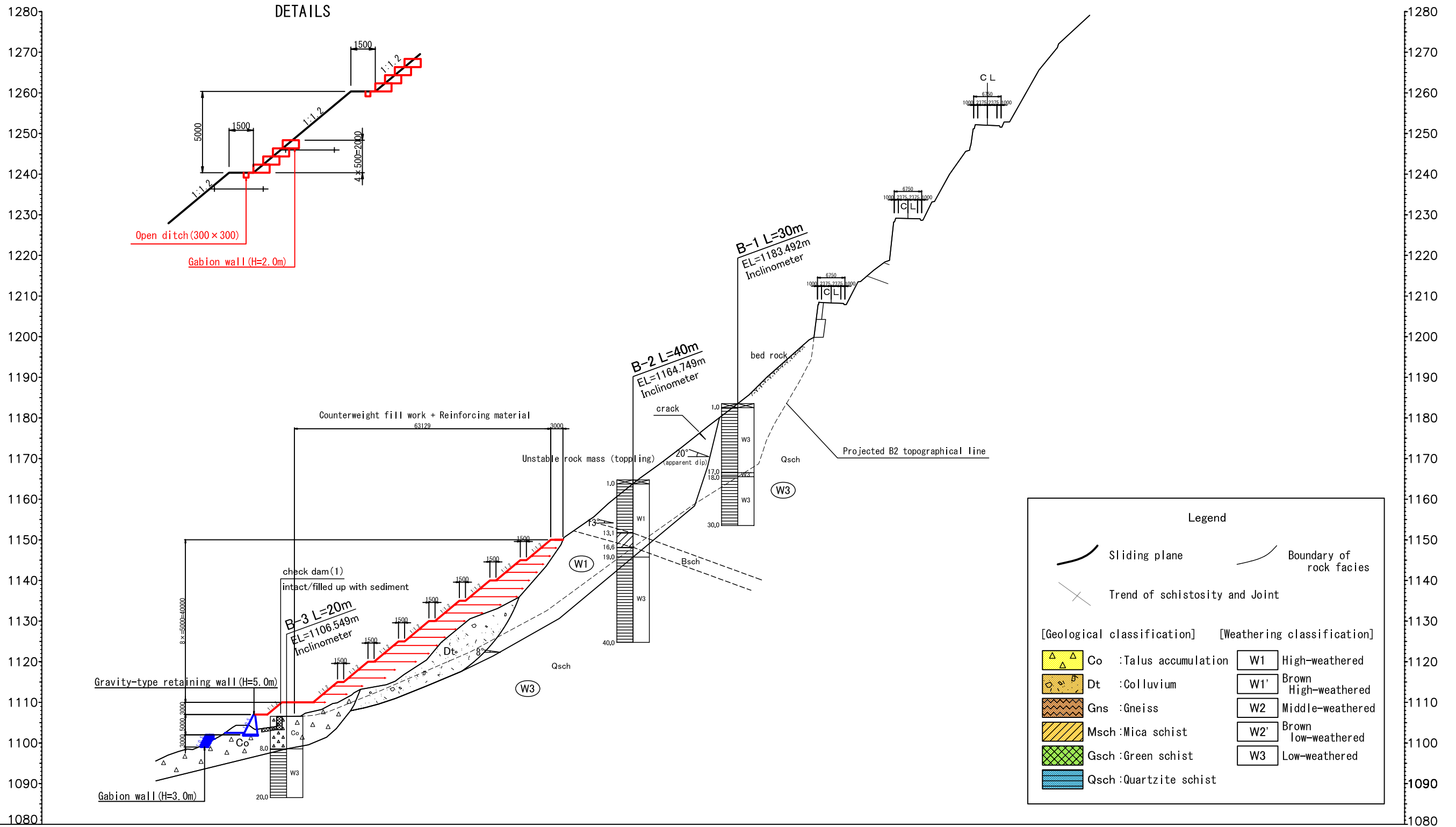
1:1000

# Cross Section B-2 Plan II

## DETAILS



# Cross Section B-3 Plan II



THE DEPARTMENT OF ROADS  
MINISTRY OF PHYSICAL PLANNING  
AND WORKS  
NEPAL

JAPAN INTERNATIONAL COOPERATION AGENCY  
**JICA** NIPPON KOEI CO., LTD. (NK)

04			
03			
02			
01			
REV.	DATE		

DESIGNED BY	
DRAWN BY	
ASSISTED BY	
RECOMMENDED BY	
APPROVED BY	

THE PREPARATORY SURVEY  
ON THE PROJECT  
FOR COUNTERMEASURE CONSTRUCTION  
FOR THE LANDSLIDES  
ON SINDHULI ROAD (SECTION II)

DATE  
MARCH 2011

DWG.NO.  
15

1:1000