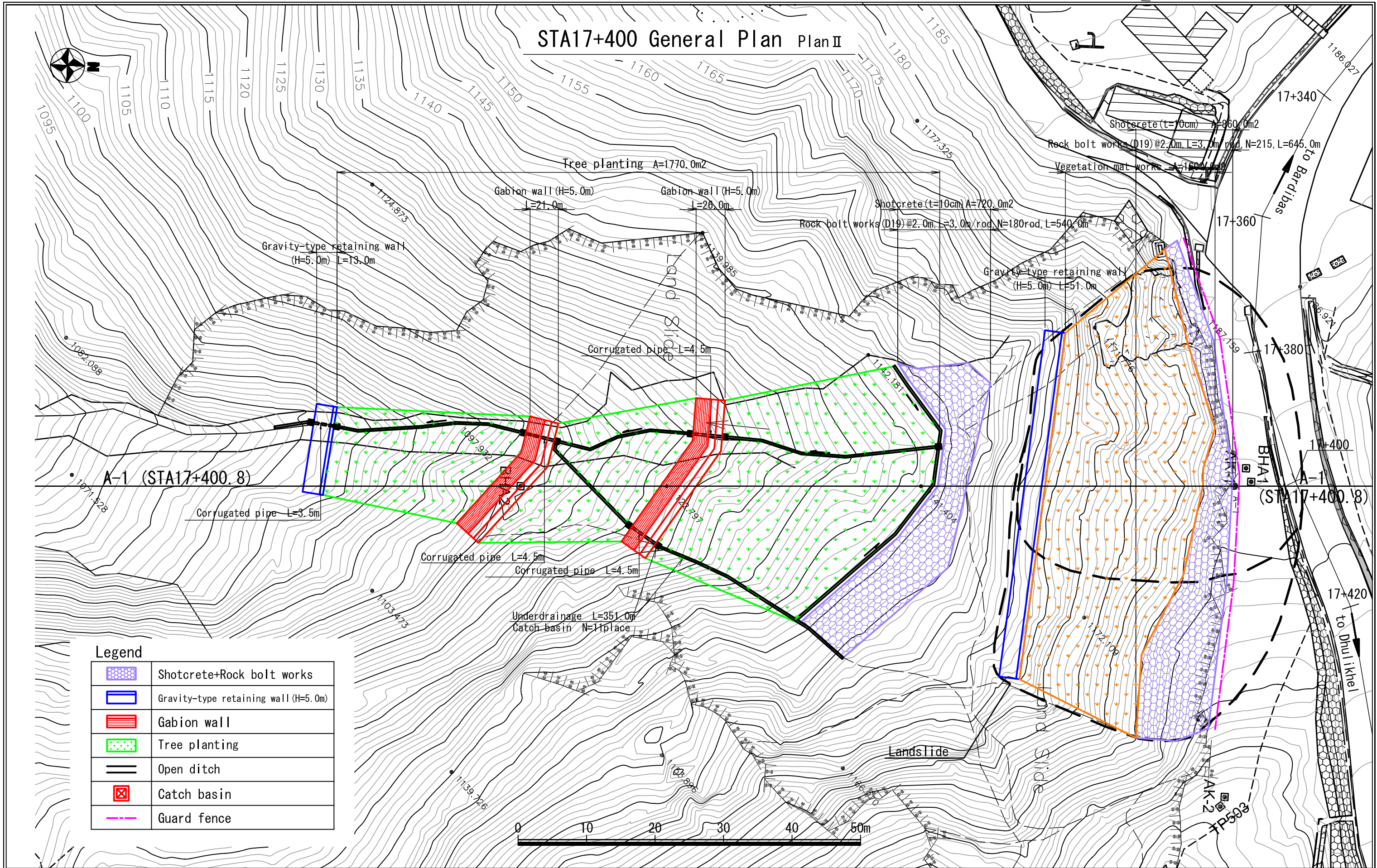


STA17+400 General Plan Plan II



Legend	
	Shotcrete+Rock bolt works
	Gravity-type retaining wall (H=5.0m)
	Gabion wall
	Tree planting
	Open ditch
	Catch basin
	Guard fence



THE DEPARTMENT OF ROADS
MINISTRY OF PHYSICAL PLANNING
AND WORKS
NEPAL

JAPAN INTERNATIONAL COOPERATION AGENCY
 NIPPON KOEI CO., LTD. (NK)

04			
03			
02			
01			
REV.	DATE		

DESIGNED BY	
DRAWN BY	
ASSISTED BY	
RECOMMENDED BY	
APPROVED BY	

THE PREPARATORY SURVEY
ON THE PROJECT
FOR COUNTERMEASURE CONSTRUCTION
FOR THE LANDSLIDES
ON SINDHULI ROAD (SECTION II)

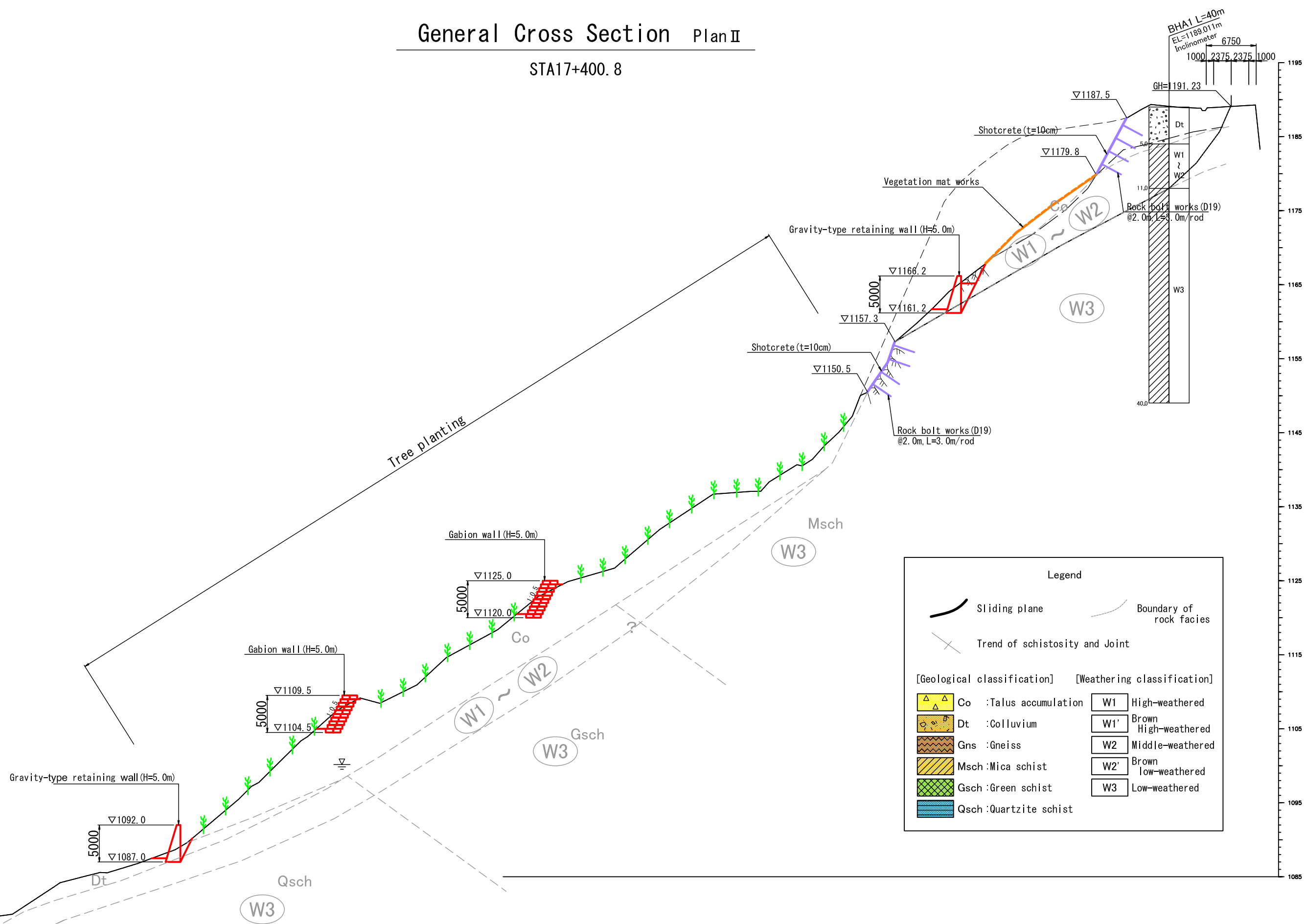
DATE
MARCH 2011

DWG.NO.
05

1:500

General Cross Section Plan II

STA17+400.8



Legend

- Sliding plane
- Boundary of rock facies
- Trend of schistosity and Joint

[Geological classification]	[Weathering classification]
Co : Talus accumulation	W1 High-weathered
Dt : Colluvium	W1' Brown High-weathered
Gns : Gneiss	W2 Middle-weathered
Msch : Mica schist	W2' Brown low-weathered
Gsch : Green schist	W3 Low-weathered
Qsch : Quartzite schist	

THE DEPARTMENT OF ROADS
MINISTRY OF PHYSICAL PLANNING
AND WORKS
NEPAL

JAPAN INTERNATIONAL COOPERATION AGENCY
JICA NIPPON KOEI CO., LTD. (NK)

04		DESIGNED BY	
03		DRAWN BY	
02		ASSISTED BY	
01		RECOMMENDED BY	
REV.	DATE	APPROVED BY	

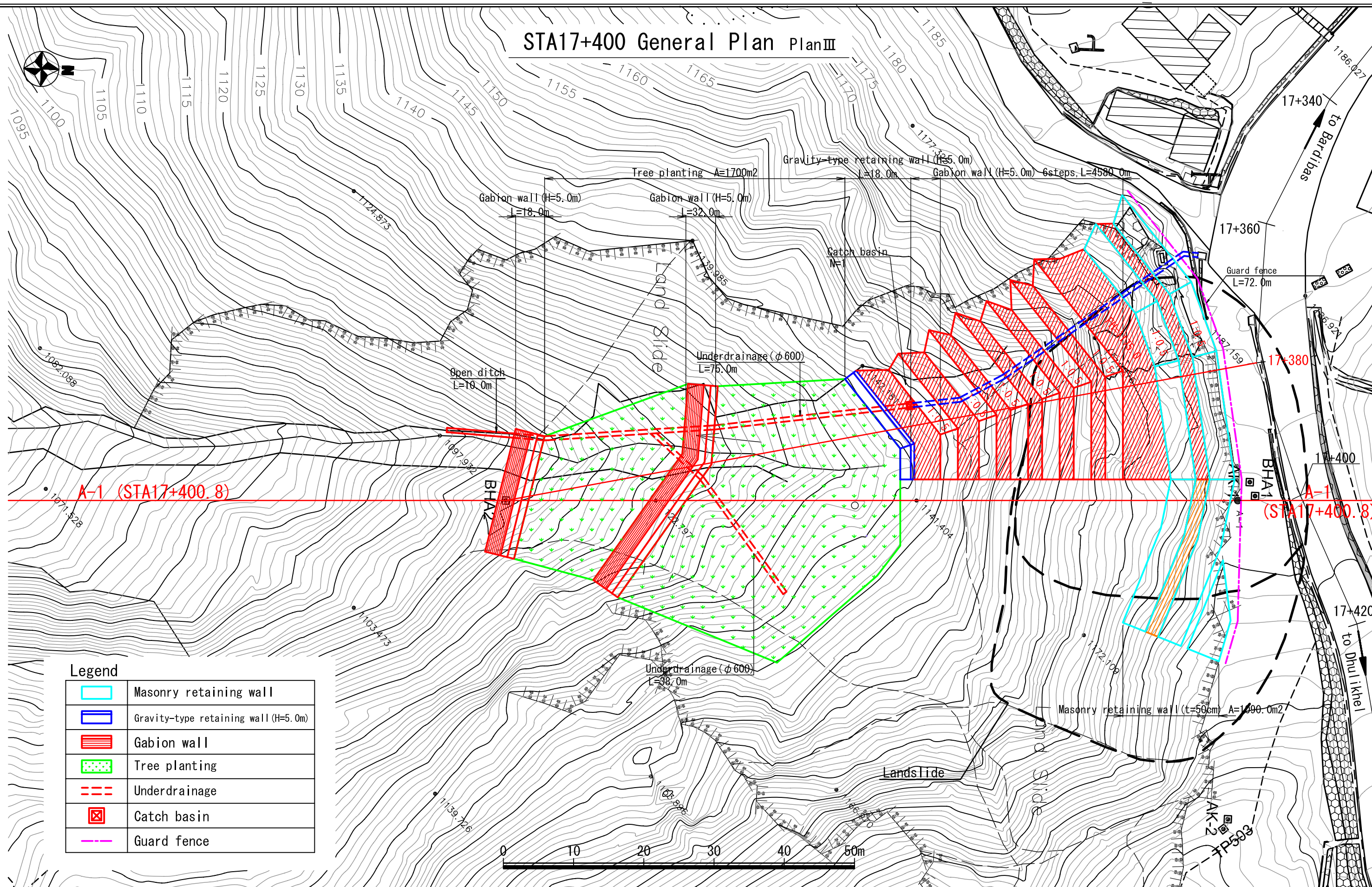
THE PREPARATORY SURVEY
ON THE PROJECT
FOR COUNTERMEASURE CONSTRUCTION
FOR THE LANDSLIDES
ON SINDHULI ROAD (SECTION II)

DATE
MARCH 2011

DWG.NO.
06

1:500

STA17+400 General Plan Plan III



Legend	
	Masonry retaining wall
	Gravity-type retaining wall (H=5.0m)
	Gabion wall
	Tree planting
	Underdrainage
	Catch basin
	Guard fence

THE DEPARTMENT OF ROADS
MINISTRY OF PHYSICAL PLANNING
AND WORKS
NEPAL

JAPAN INTERNATIONAL COOPERATION AGENCY
 NIPPON KOEI CO., LTD. (NK)

04		DESIGNED BY	
03		DRAWN BY	
02		ASSISTED BY	
01		RECOMMENDED BY	
REV.	DATE	APPROVED BY	

THE PREPARATORY SURVEY
ON THE PROJECT
FOR COUNTERMEASURE CONSTRUCTION
FOR THE LANDSLIDES
ON SINDHULI ROAD (SECTION II)

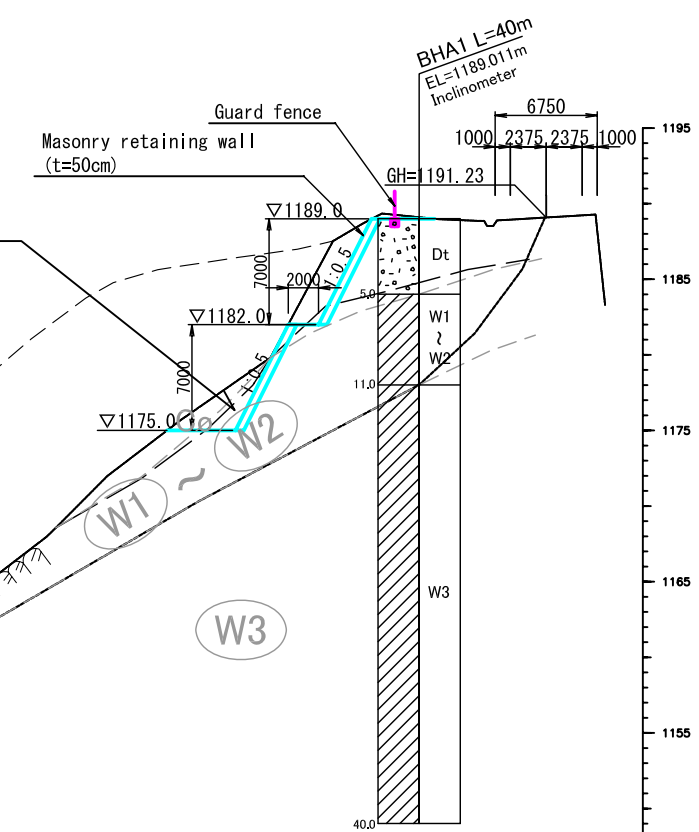
DATE	DWG.NO.	1:500
MARCH 2011	07	

General Cross Section Plan III

STA17+400.8

Surface collapses

Topographical line before collapses



Tree planting

Gabion wall (H=5.0m)

Gabion wall (H=5.0m)

Legend

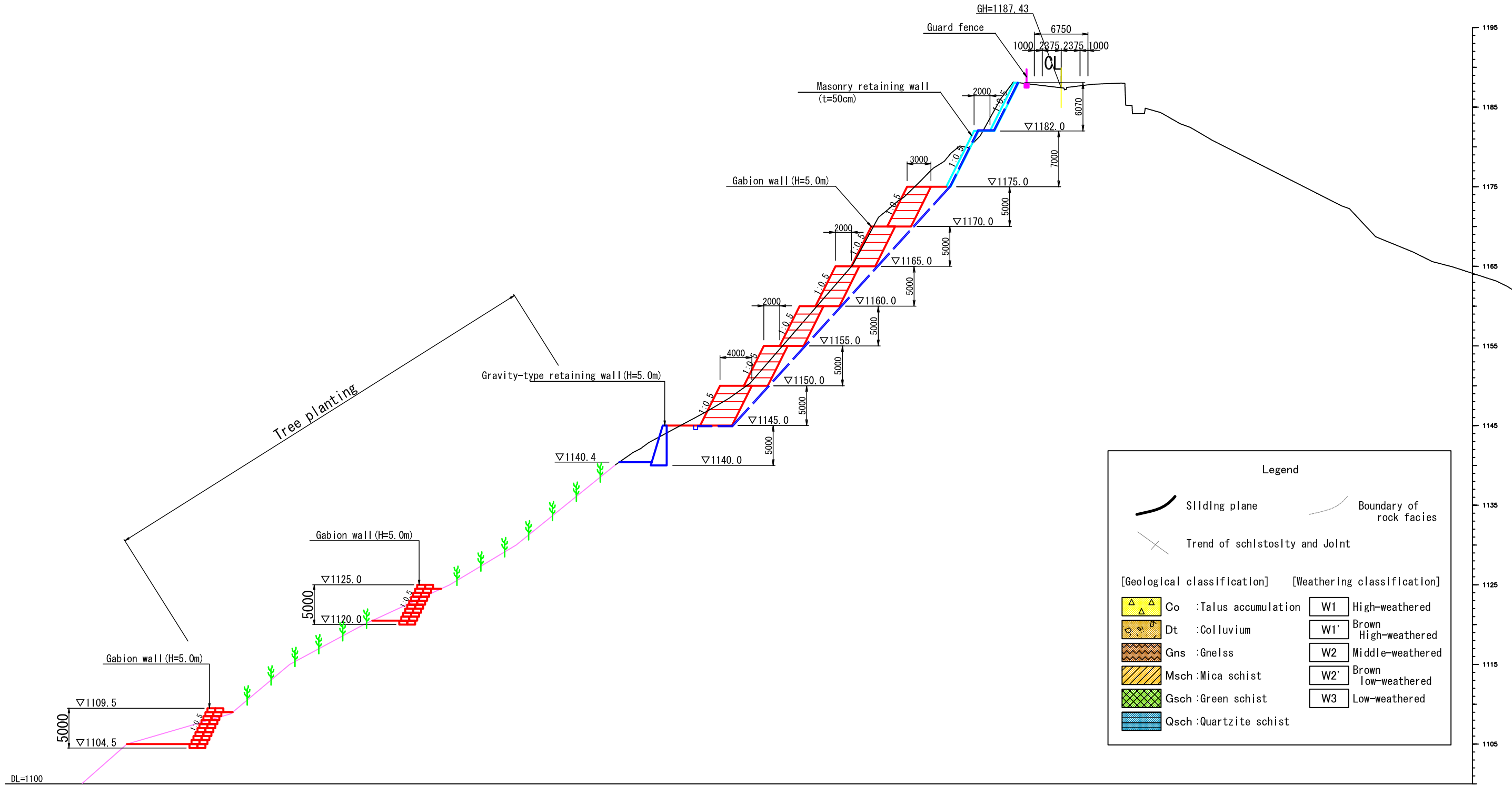
- Sliding plane
- Boundary of rock facies
- Trend of schistosity and Joint

[Geological classification]	[Weathering classification]
Co : Talus accumulation	W1 High-weathered
Dt : Colluvium	W1' Brown High-weathered
Gns : Gneiss	W2 Middle-weathered
Msch : Mica schist	W2' Brown low-weathered
Gsch : Green schist	W3 Low-weathered
Qsch : Quartzite schist	

THE DEPARTMENT OF ROADS MINISTRY OF PHYSICAL PLANNING AND WORKS NEPAL	JAPAN INTERNATIONAL COOPERATION AGENCY NIPPON KOEI CO., LTD. (NK)	04		DESIGNED BY		THE PREPARATORY SURVEY ON THE PROJECT FOR COUNTERMEASURE CONSTRUCTION FOR THE LANDSLIDES ON SINDHULI ROAD (SECTION II)	DATE MARCH 2011	DWG.NO. 08	1:500
		03		DRAWN BY					
		02		ASSISTED BY					
		01		RECOMMENDED BY					
		REV.	DATE	APPROVED BY					

General Cross Section Plan III

STA17+380.0



Legend			
	Sliding plane		Boundary of rock facies
	Trend of schistosity and joint		
[Geological classification]		[Weathering classification]	
	Co :Talus accumulation	W1	High-weathered
	Dt :Colluvium	W1'	Brown High-weathered
	Gns :Gneiss	W2	Middle-weathered
	Msch :Mica schist	W2'	Brown low-weathered
	Gsch :Green schist	W3	Low-weathered
	Qsch :Quartzite schist		

THE DEPARTMENT OF ROADS
MINISTRY OF PHYSICAL PLANNING
AND WORKS
NEPAL

JAPAN INTERNATIONAL COOPERATION AGENCY
 NIPPON KOEI CO., LTD. (NK)

04			DESIGNED BY	
03			DRAWN BY	
02			ASSISTED BY	
01			RECOMMENDED BY	
REV.	DATE		APPROVED BY	

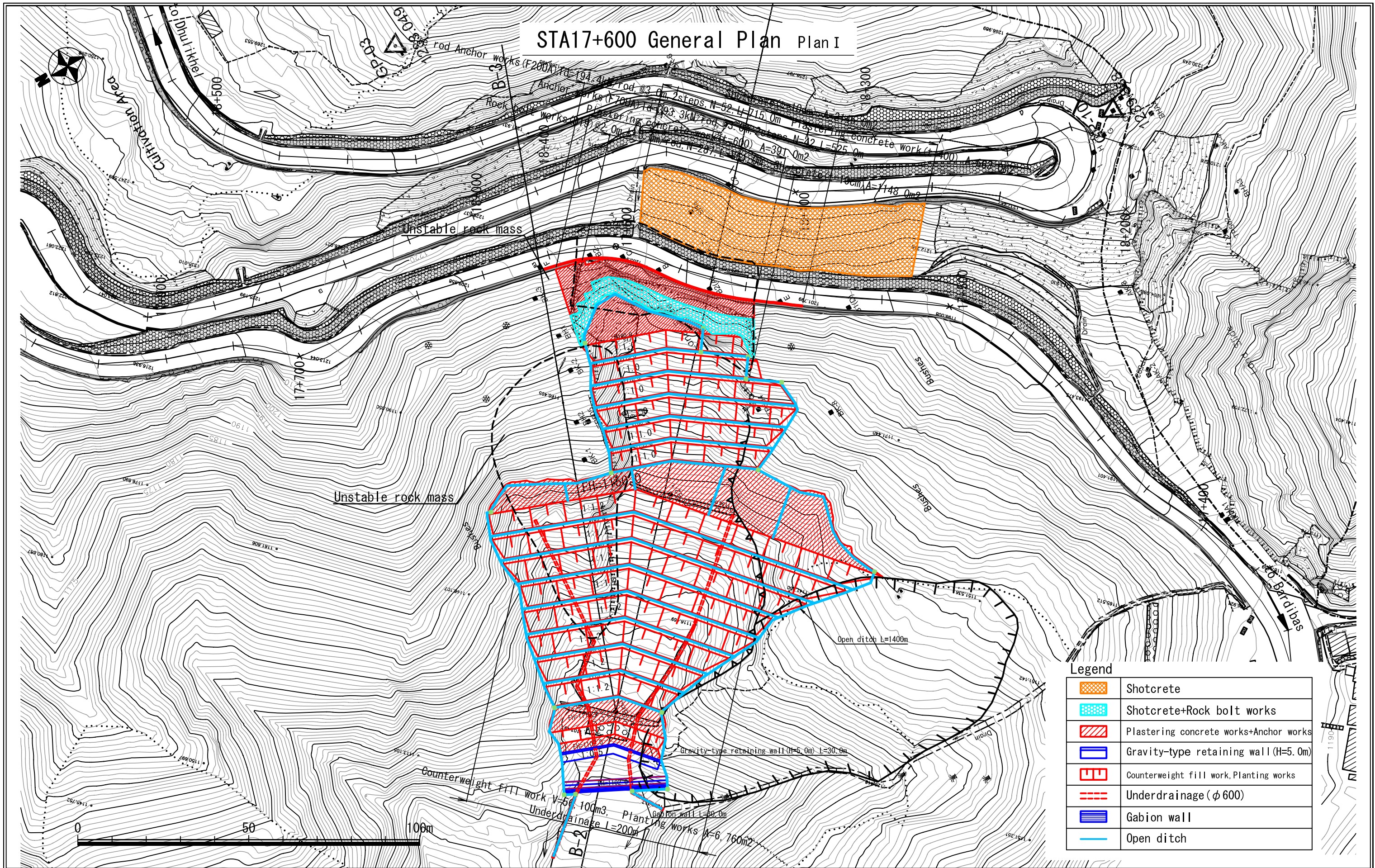
THE PREPARATORY SURVEY
ON THE PROJECT
FOR COUNTERMEASURE CONSTRUCTION
FOR THE LANDSLIDES
ON SINDHULI ROAD (SECTION II)

DATE
MARCH 2011

DWG.NO.
09

1:500

STA17+600 General Plan Plan I



THE DEPARTMENT OF ROADS
MINISTRY OF PHYSICAL PLANNING
AND WORKS
NEPAL

JAPAN INTERNATIONAL COOPERATION AGENCY
NIPON KOEI CO., LTD. (NK)

04	
03	
02	
01	
REV.	DATE

DESIGNED BY	
DRAWN BY	
ASSISTED BY	
RECOMMENDED BY	
APPROVED BY	

THE PREPARATORY SURVEY
ON THE PROJECT
FOR COUNTERMEASURE CONSTRUCTION
FOR THE LANDSLIDES
ON SINDHULI ROAD (SECTION II)

DATE
MARCH 2011

DWG.NO.
10

1:1000