

THE DEPARTMENT OF ROADS,  
MINISTRY OF PHYSICAL PLANNING AND WORKS  
NEPAL

THE PREPARATORY SURVEY  
ON  
THE PROJECT  
FOR  
COUNTERMEASURE CONSTRUCTION  
FOR  
THE LANDSLIDES  
ON  
SINDHULI ROAD (SECTION II)

March 2011

JAPAN INTERNATIONAL COOPERATION AGENCY  
NIPPON KOEI CO., LTD.

THE DEPARTMENT OF ROADS,  
MINISTRY OF PHYSICAL PLANNING AND WORKS  
NEPAL

THE PREPARATORY SURVEY  
ON  
THE PROJECT  
FOR  
COUNTERMEASURE CONSTRUCTION  
FOR  
THE LANDSLIDES  
ON  
SINDHULI ROAD (SECTION II)

Volume II

Drawing

March 2011

JAPAN INTERNATIONAL COOPERATION AGENCY

NIPPON KOEI CO., LTD.

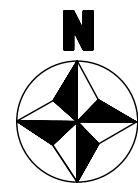
**VOLUME II DRAWING**

**STURUCTUAL DRAWING**

**STANDARD DRAWING**

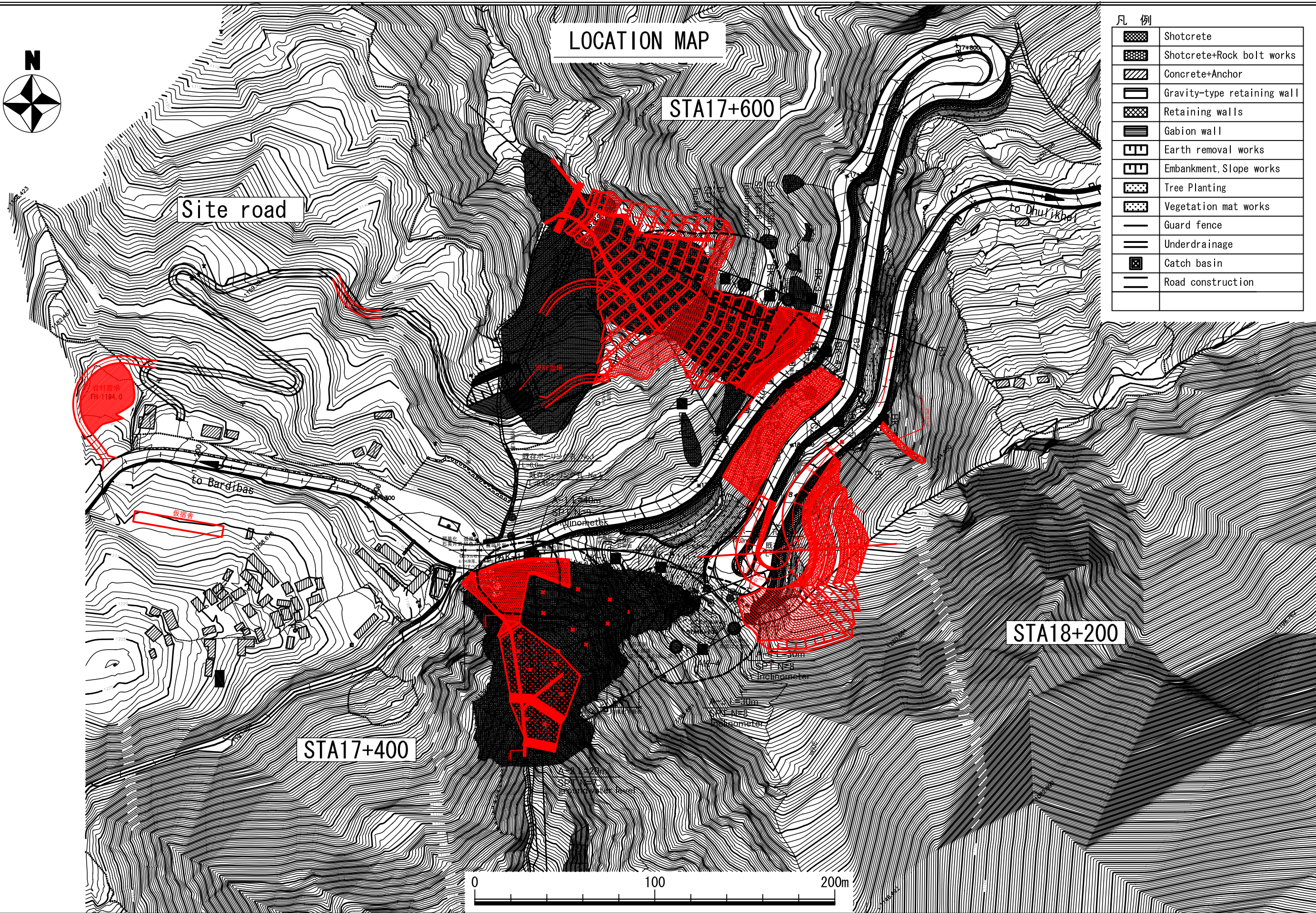
Figure number	Station	Name	Plan
Figure 1		Location Map	
Figure 2	Sta.17+400	General Plan	Plan I
Figure 3	Sta.17+400	General Cross Section Sta17+400.8	Plan I
Figure 4	Sta.17+400	General Cross Section Sta17+380.0	Plan I
Figure 5	Sta.17+400	General Plan	Plan II
Figure 6	Sta.17+400	General Cross Section Sta17+400.8	Plan II
Figure 7	Sta.17+400	General Plan	Plan III
Figure 8	Sta.17+400	General Cross Section Sta17+400.8	Plan III
Figure 9	Sta.17+400	General Cross Section Sta17+380.0	Plan III
Figure 10	Sta.17+600	General Plan	Plan I
Figure 11	Sta.17+600	General Cross Section B-2	Plan I
Figure 12	Sta.17+600	General Cross Section B-3	Plan I
Figure 13	Sta.17+600	General Plan	Plan II
Figure 14	Sta.17+600	General Cross Section B-2	Plan II
Figure 15	Sta.17+600	General Cross Section B-3	Plan II
Figure 16	Sta.17+600	General Plan	Plan III
Figure 17	Sta.17+600	General Cross Section B-2	Plan III
Figure 18	Sta.17+600	General Cross Section B-3	Plan III
Figure 19	Sta.18+200	General Plan & General Cross Section	Plan I
Figure 20	Sta.18+200	General Plan	Plan II
Figure 21	Sta.18+200	General Cross Section A-2	Plan II
Figure 22	Sta.18+200	General Cross Section A-3	Plan II
Figure 23	Sta.18+200	General Plan	Plan III
Figure 24	Sta.18+200	General Cross Section A-2	Plan III
Figure 25	Sta.18+200	General Cross Section A-3	Plan III
Figure 26	Sta.17+600	General Plan Site road	

Figure number	Name	remarks
Figure 27	Anchor Works	
Figure 28	Rock Bolt (1)	
Figure 29	Rock Bolt (2)	
Figure 30	Slope Works (Scaffolding Works, Shotcrete)	
Figure 31	Drainage Structures	
Figure 32	Gabion Wall	
Figure 33	Reinforcement Bank Works	
Figure 34	Retaining wall, Gravity retaining wall	
Figure 35	Tentative Protection Fence	
Figure 36	Guard Fence	
Figure 37	Rock-Net	



LOCATION MAP

凡例	
	Shotcrete
	Shotcrete+Rock bolt works
	Concrete+Anchor
	Gravity-type retaining wall
	Retaining walls
	Gabion wall
	Earth removal works
	Embankment, Slope works
	Tree Planting
	Vegetation mat works
	Guard fence
	Underdrainage
	Catch basin
	Road construction



THE DEPARTMENT OF ROADS  
MINISTRY OF PHYSICAL PLANNING  
AND WORKS  
NEPAL

JAPAN INTERNATIONAL COOPERATION AGENCY  
 NIPPON KOEI CO., LTD. (NK)

04		DESIGNED BY	
03		DRAWN BY	
02		ASSISTED BY	
01		RECOMMENDED BY	
REV.	DATE	APPROVED BY	

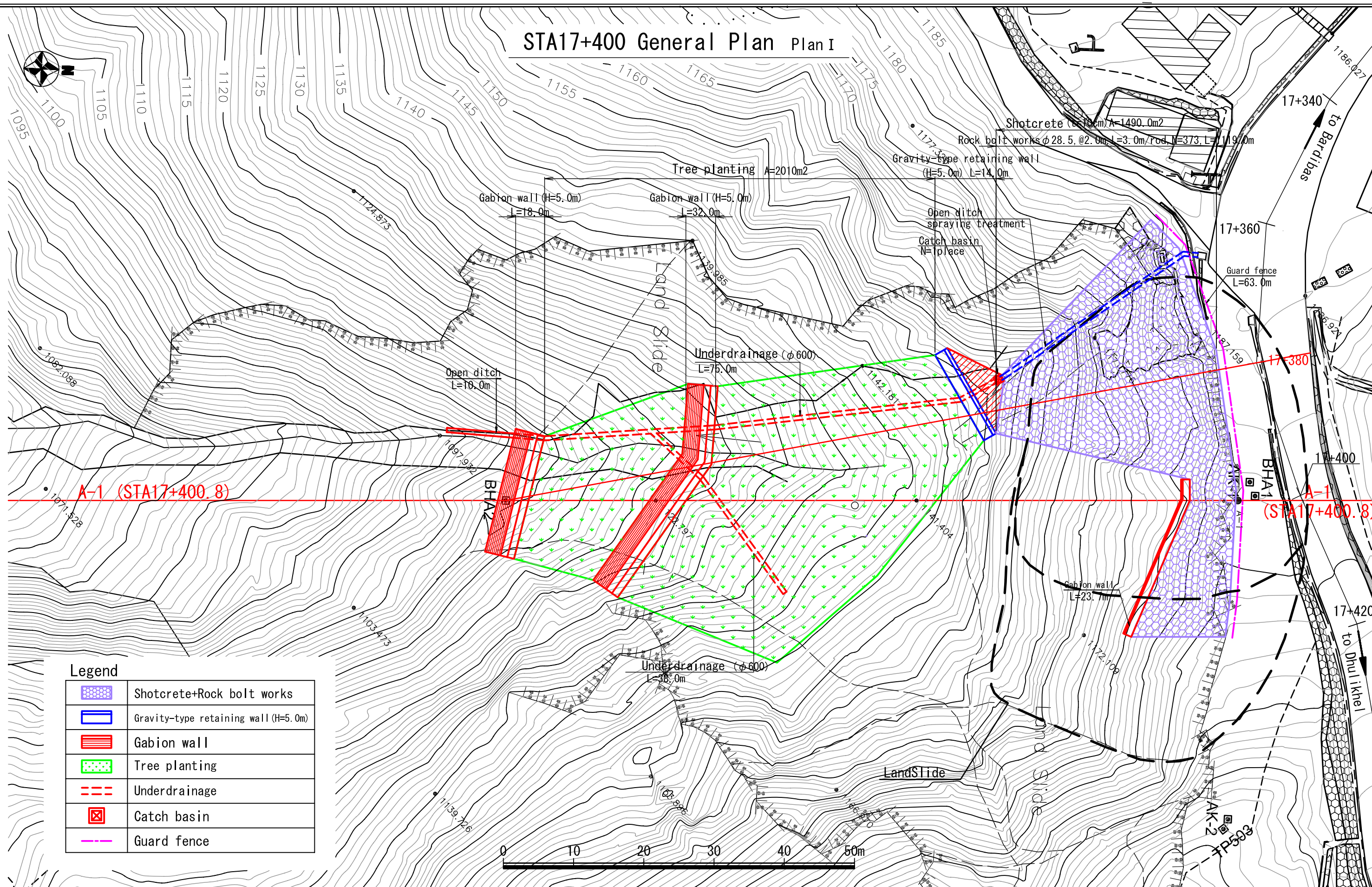
THE PREPARATORY SURVEY  
ON THE PROJECT  
FOR COUNTERMEASURE CONSTRUCTION  
FOR THE LANDSLIDES  
ON SINDHULI ROAD (SECTION II)

DATE  
MARCH 2011

DWG.NO.  
01

1:2000

# STA17+400 General Plan Plan I



Legend	
	Shotcrete+Rock bolt works
	Gravity-type retaining wall (H=5.0m)
	Gabion wall
	Tree planting
	Underdrainage
	Catch basin
	Guard fence

THE DEPARTMENT OF ROADS  
MINISTRY OF PHYSICAL PLANNING  
AND WORKS  
NEPAL

JAPAN INTERNATIONAL COOPERATION AGENCY  
 NIPPON KOEI CO., LTD. (NK)

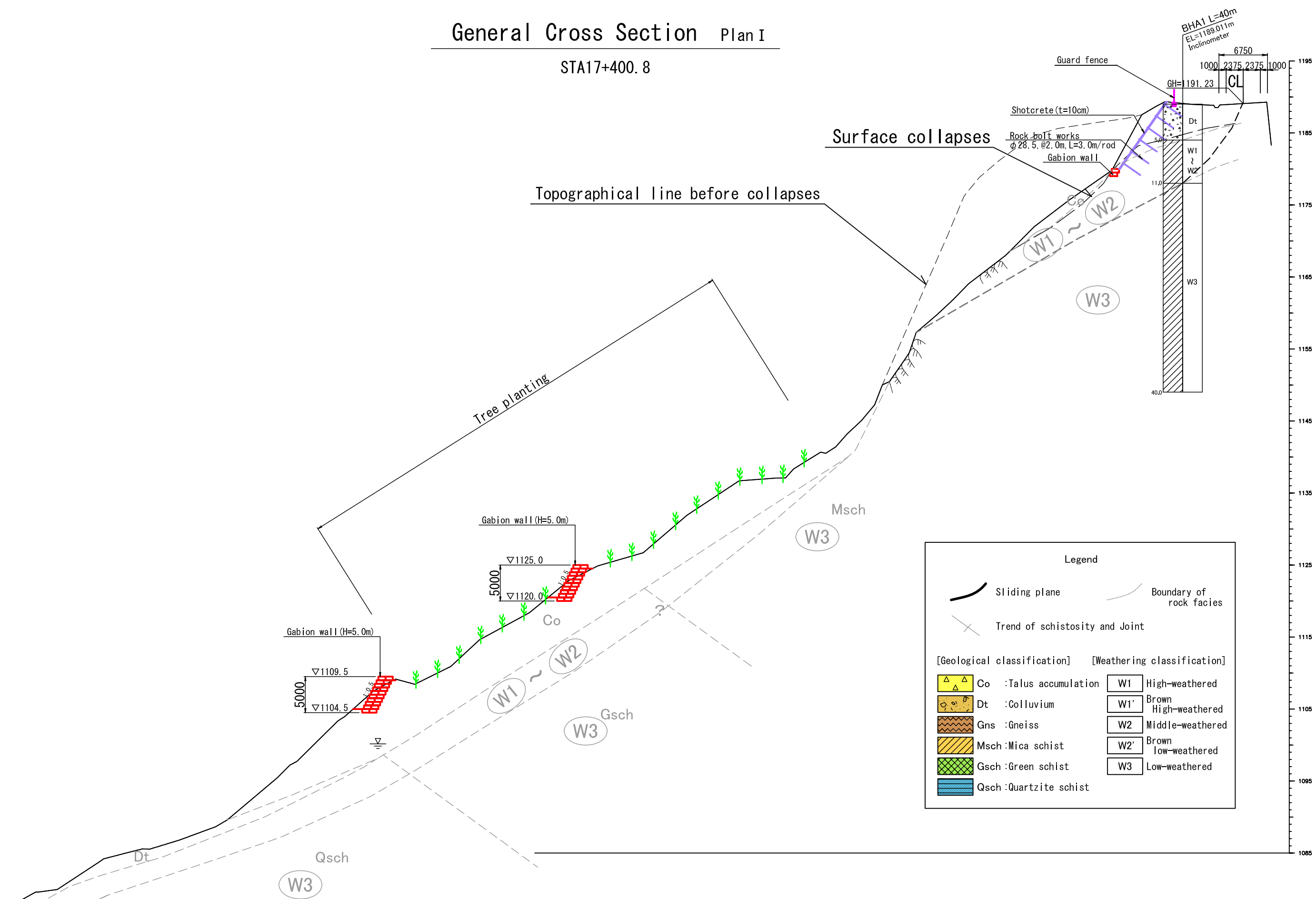
04		DESIGNED BY	
03		DRAWN BY	
02		ASSISTED BY	
01		RECOMMENDED BY	
REV.	DATE	APPROVED BY	

THE PREPARATORY SURVEY  
ON THE PROJECT  
FOR COUNTERMEASURE CONSTRUCTION  
FOR THE LANDSLIDES  
ON SINDHULI ROAD (SECTION II)

DATE	DWG.NO.	1:500
MARCH 2011	02	

# General Cross Section Plan I

STA17+400.8



**Legend**

- Sliding plane
- Boundary of rock facies
- Trend of schistosity and Joint

[Geological classification]		[Weathering classification]	
	Co : Talus accumulation		W1 High-weathered
	Dt : Colluvium		W1' Brown High-weathered
	Gns : Gneiss		W2 Middle-weathered
	Msch : Mica schist		W2' Brown low-weathered
	Gsch : Green schist		W3 Low-weathered
	Qsch : Quartzite schist		

THE DEPARTMENT OF ROADS  
MINISTRY OF PHYSICAL PLANNING  
AND WORKS  
NEPAL

JAPAN INTERNATIONAL COOPERATION AGENCY  
 NIPPON KOEI CO., LTD. (NK)

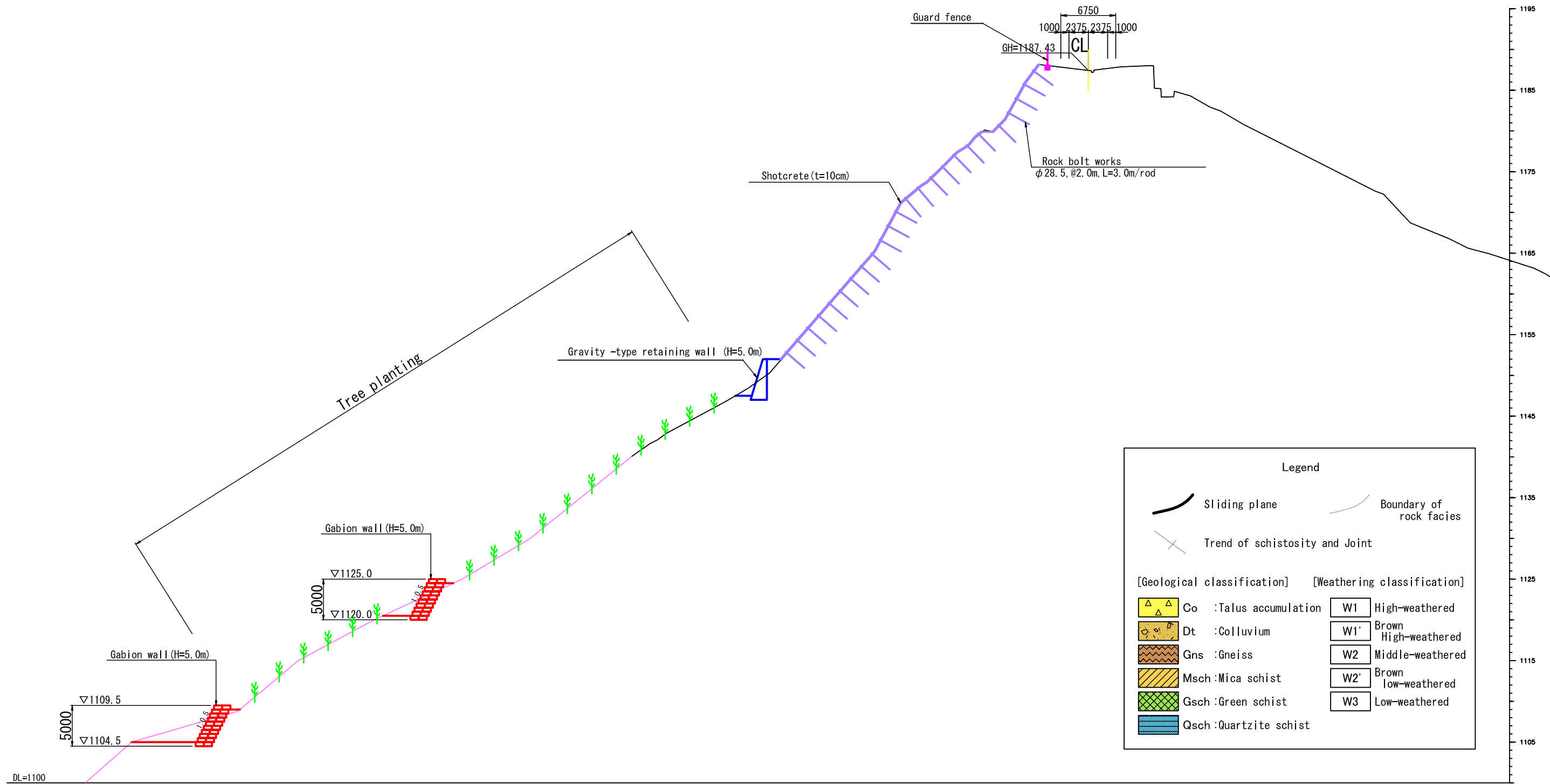
04		DESIGNED BY	
03		DRAWN BY	
02		ASSISTED BY	
01		RECOMMENDED BY	
REV.	DATE	APPROVED BY	

THE PREPARATORY SURVEY  
ON THE PROJECT  
FOR COUNTERMEASURE CONSTRUCTION  
FOR THE LANDSLIDES  
ON SINDHULI ROAD (SECTION II)

DATE	DWG.NO.	1:500
MARCH 2011	03	

# General Cross Section Plan I

STA17+380.0



**Legend**

Sliding plane

Boundary of rock facies

Trend of schistosity and Joint

**[Geological classification]**

- Co :Talus accumulation
- Dt :Colluvium
- Gns :Gneiss
- Msch :Mica schist
- Gsch :Green schist
- Qsch :Quartzite schist

**[Weathering classification]**

- W1 High-weathered
- W1' Brown High-weathered
- W2 Middle-weathered
- W2' Brown low-weathered
- W3 Low-weathered

THE DEPARTMENT OF ROADS  
MINISTRY OF PHYSICAL PLANNING  
AND WORKS  
NEPAL

JAPAN INTERNATIONAL COOPERATION AGENCY  
 NIPPON KOEI CO., LTD. (NK)

04			DESIGNED BY
03			DRAWN BY
02			ASSISTED BY
01			RECOMMENDED BY
REV.	DATE		APPROVED BY

THE PREPARATORY SURVEY  
ON THE PROJECT  
FOR COUNTERMEASURE CONSTRUCTION  
FOR THE LANDSLIDES  
ON SINDHULI ROAD (SECTION II)

DATE  
MARCH 2011

DWG.NO.  
04

1:500