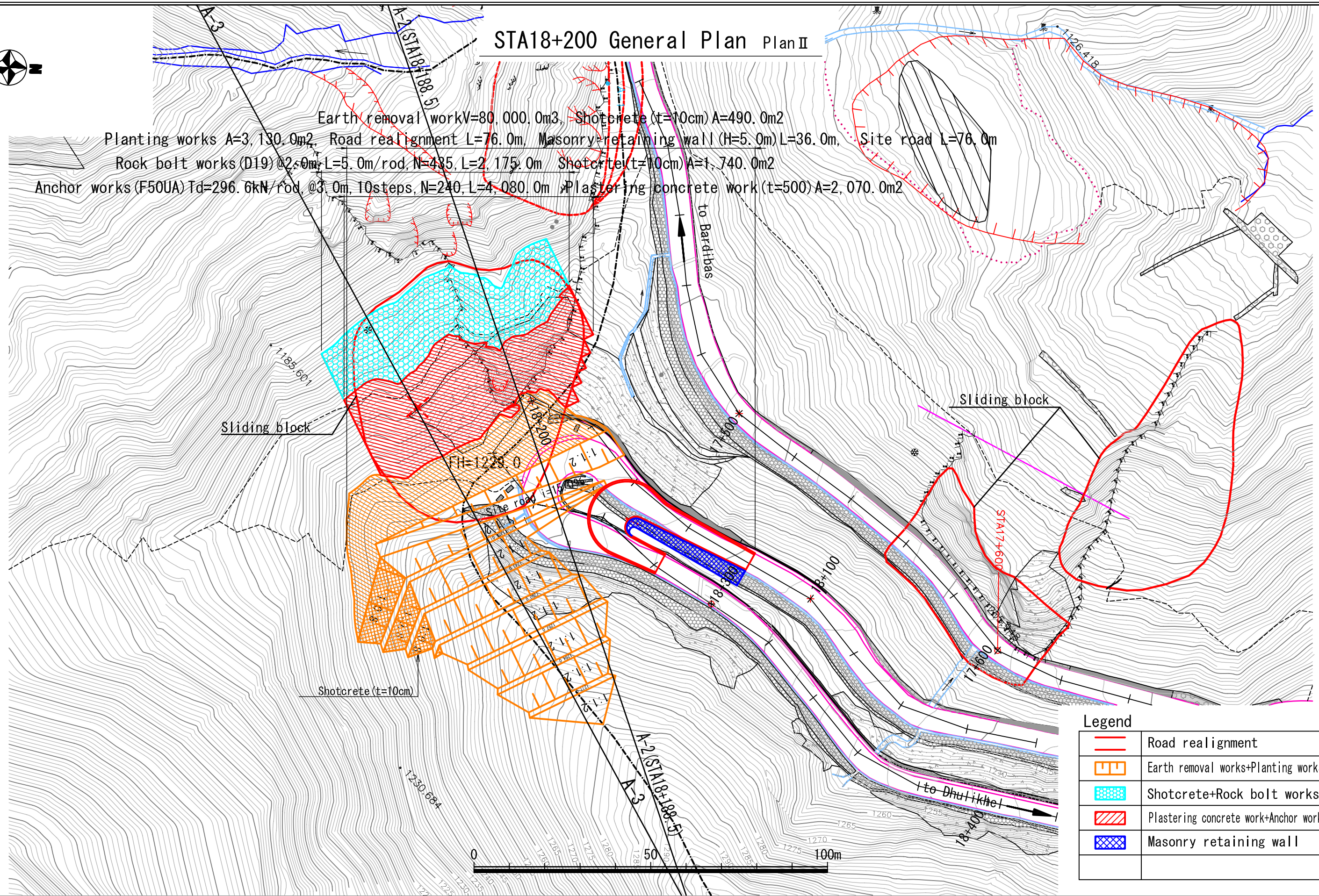


STA18+200 General Plan Plan II

Earth removal work $V=80,000.0m^3$, Shotcrete ($t=10cm$) $A=490.0m^2$
 Planting works $A=3,130.0m^2$, Road realignment $L=76.0m$, Masonry retaining wall ($H=5.0m$) $L=36.0m$, Site road $L=76.0m$
 Rock bolt works (D19) @ $2.0m$ $L=5.0m/rod$, $N=435$, $L=2,175.0m$ Shotcrete ($t=10cm$) $A=1,740.0m^2$
 Anchor works (F50UA) $T_d=296.6kN/rod$, @ $3.0m$, 10 steps, $N=240$, $L=4,080.0m$ Plastering concrete work ($t=500$) $A=2,070.0m^2$



Legend	
	Road realignment
	Earth removal works+Planting works
	Shotcrete+Rock bolt works
	Plastering concrete work+Anchor works
	Masonry retaining wall

THE DEPARTMENT OF ROADS
 MINISTRY OF PHYSICAL PLANNING
 AND WORKS
 NEPAL

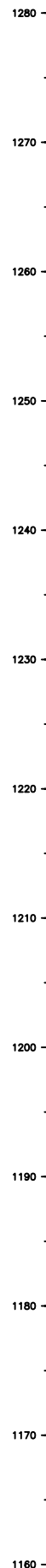
JAPAN INTERNATIONAL COOPERATION AGENCY
 NIPPON KOEI CO., LTD. (NK)

04		DESIGNED BY	
03		DRAWN BY	
02		ASSISTED BY	
01		RECOMMENDED BY	
REV.	DATE	APPROVED BY	

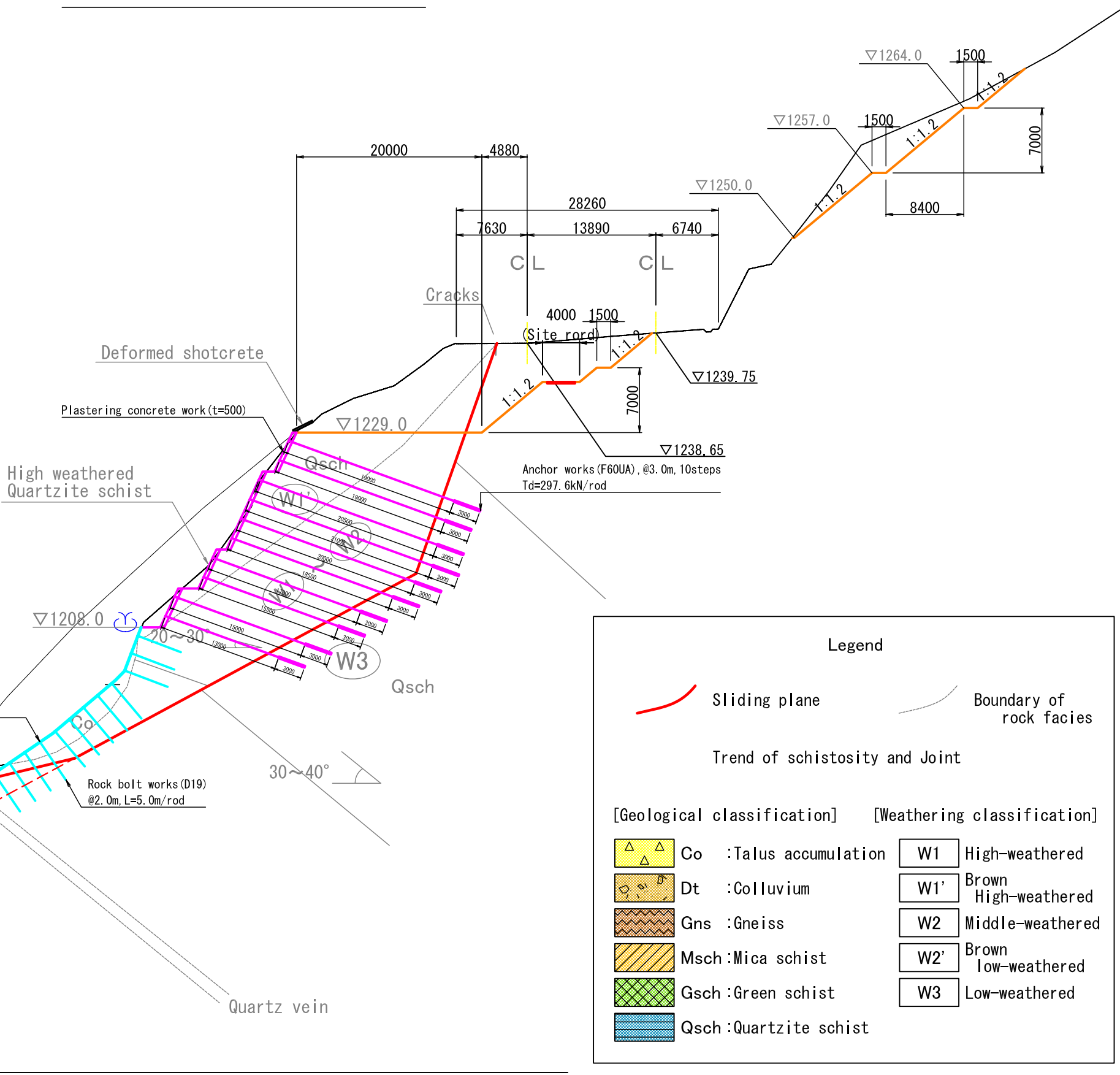
THE PREPARATORY SURVEY
 ON THE PROJECT
 FOR COUNTERMEASURE CONSTRUCTION
 FOR THE LANDSLIDES
 ON SINDHULI ROAD (SECTION II)

		1:1000	
DATE	DWG.NO.		
MARCH 2011	20		

Cross Section A-2 Plan II



Factor of Safety	
Initial Factor of Safety	Fs = 0.95
Earth removal works	Fs = 1.05
Proposed Factor of Safety	PFs = 1.20
Pr	945.0 KN/m



Legend

Sliding plane
Boundary of rock facies
Trend of schistosity and Joint

[Geological classification]	[Weathering classification]
Co :Talus accumulation	W1 High-weathered
Dt :Colluvium	W1' Brown High-weathered
Gns :Gneiss	W2 Middle-weathered
Msch :Mica schist	W2' Brown low-weathered
Gsch :Green schist	W3 Low-weathered
Qsch :Quartzite schist	

THE DEPARTMENT OF ROADS
MINISTRY OF PHYSICAL PLANNING
AND WORKS
NEPAL

JICA INTERNATIONAL COOPERATION AGENCY
NIPPON KOEI CO., LTD. (NK)
Gns

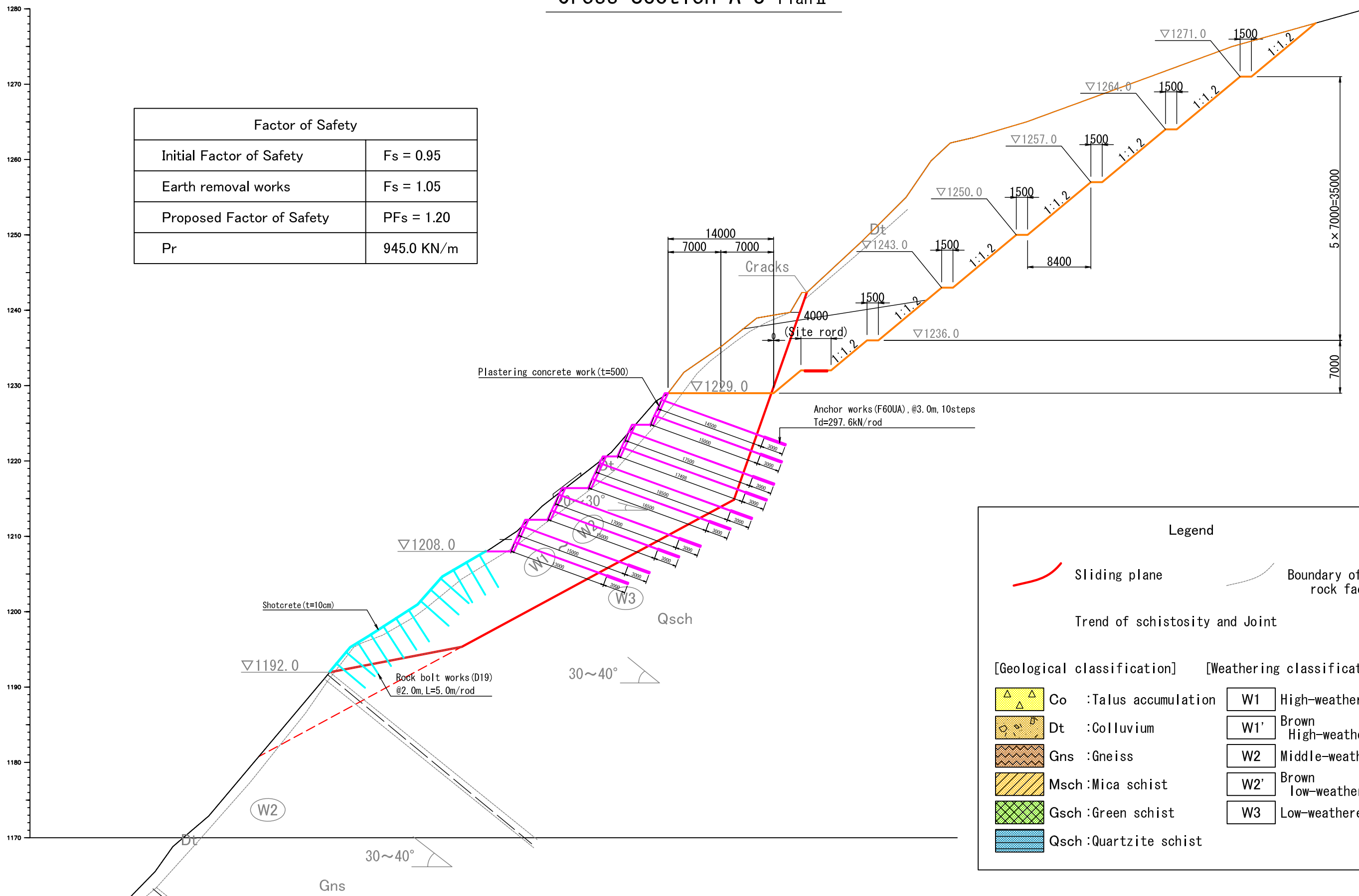
04		DESIGNED BY	
03		DRAWN BY	
02		ASSISTED BY	
01		RECOMMENDED BY	
REV.	DATE	APPROVED BY	

THE PREPARATORY SURVEY
ON THE PROJECT
FOR COUNTERMEASURE CONSTRUCTION
FOR THE LANDSLIDES
ON SINDHULI ROAD (SECTION II)

DATE		DWG.NO.	
MARCH 2011		21	

1:500

Cross Section A-3 Plan II



THE DEPARTMENT OF ROADS
MINISTRY OF PHYSICAL PLANNING
AND WORKS
NEPAL

JAPAN INTERNATIONAL COOPERATION AGENCY
JICA NIPPON KOEI CO., LTD. (NK)

04		DESIGNED BY	
03		DRAWN BY	
02		ASSISTED BY	
01		RECOMMENDED BY	
REV.	DATE	APPROVED BY	

THE PREPARATORY SURVEY
ON THE PROJECT
FOR COUNTERMEASURE CONSTRUCTION
FOR THE LANDSLIDES
ON SINDHULI ROAD (SECTION II)

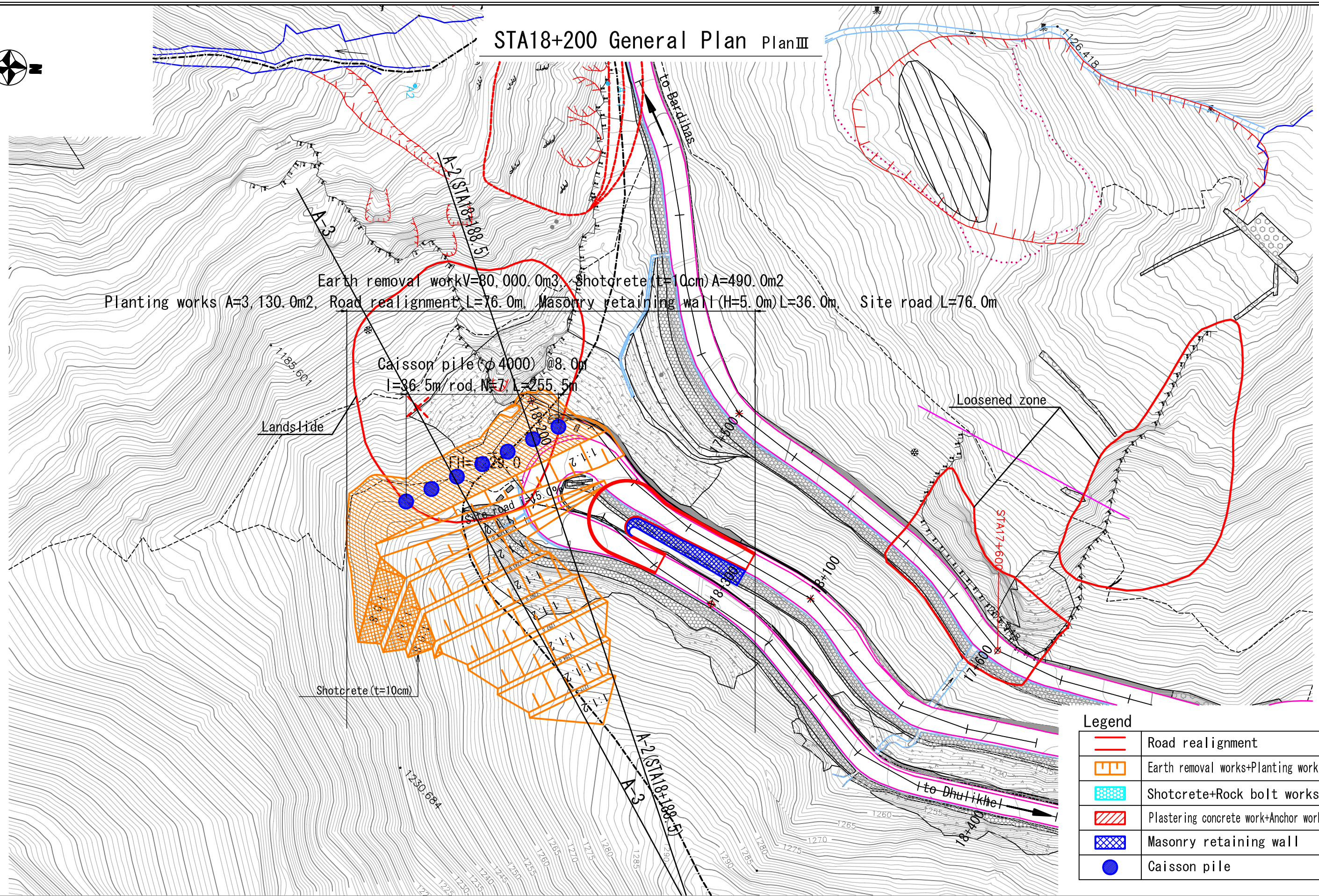
DATE
MARCH 2011

DWG.NO.
22

1:500



STA18+200 General Plan Plan III



Legend	
	Road realignment
	Earth removal works+Planting works
	Shotcrete+Rock bolt works
	Plastering concrete work+Anchor works
	Masonry retaining wall
	Caisson pile

THE DEPARTMENT OF ROADS
 MINISTRY OF PHYSICAL PLANNING
 AND WORKS
 NEPAL

JAPAN INTERNATIONAL COOPERATION AGENCY
 NIPPON KOEI CO., LTD. (NK)

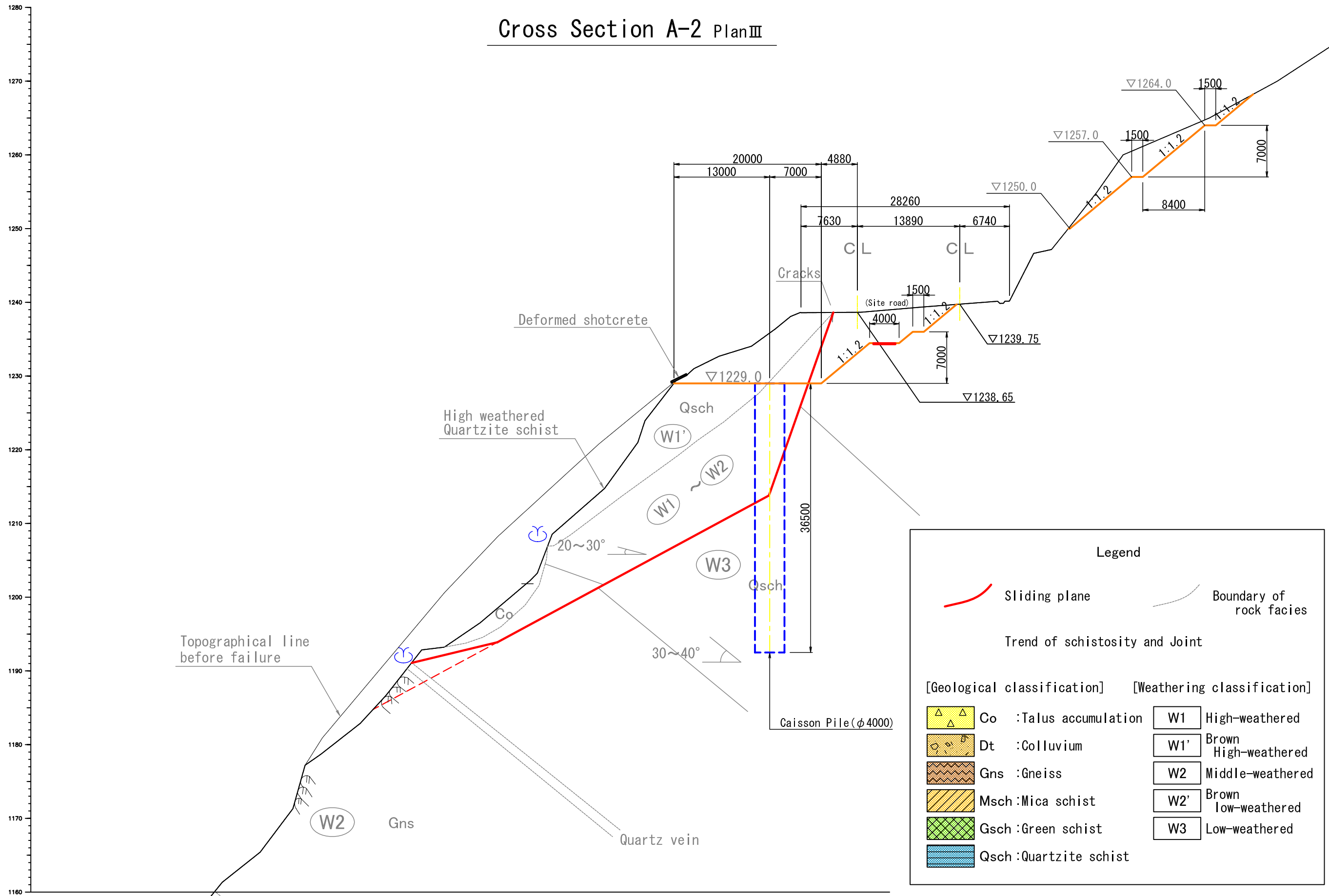
04		
03		
02		
01		
REV.	DATE	

DESIGNED BY	
DRAWN BY	
ASSISTED BY	
RECOMMENDED BY	
APPROVED BY	

THE PREPARATORY SURVEY
 ON THE PROJECT
 FOR COUNTERMEASURE CONSTRUCTION
 FOR THE LANDSLIDES
 ON SINDHULI ROAD (SECTION II)

DATE	DWG.NO.	1:1000
MARCH 2011	23	

Cross Section A-2 Plan III



THE DEPARTMENT OF ROADS
MINISTRY OF PHYSICAL PLANNING
AND WORKS
NEPAL

JICA INTERNATIONAL COOPERATION AGENCY
NIPPON KOEI CO., LTD. (NK)
Gns

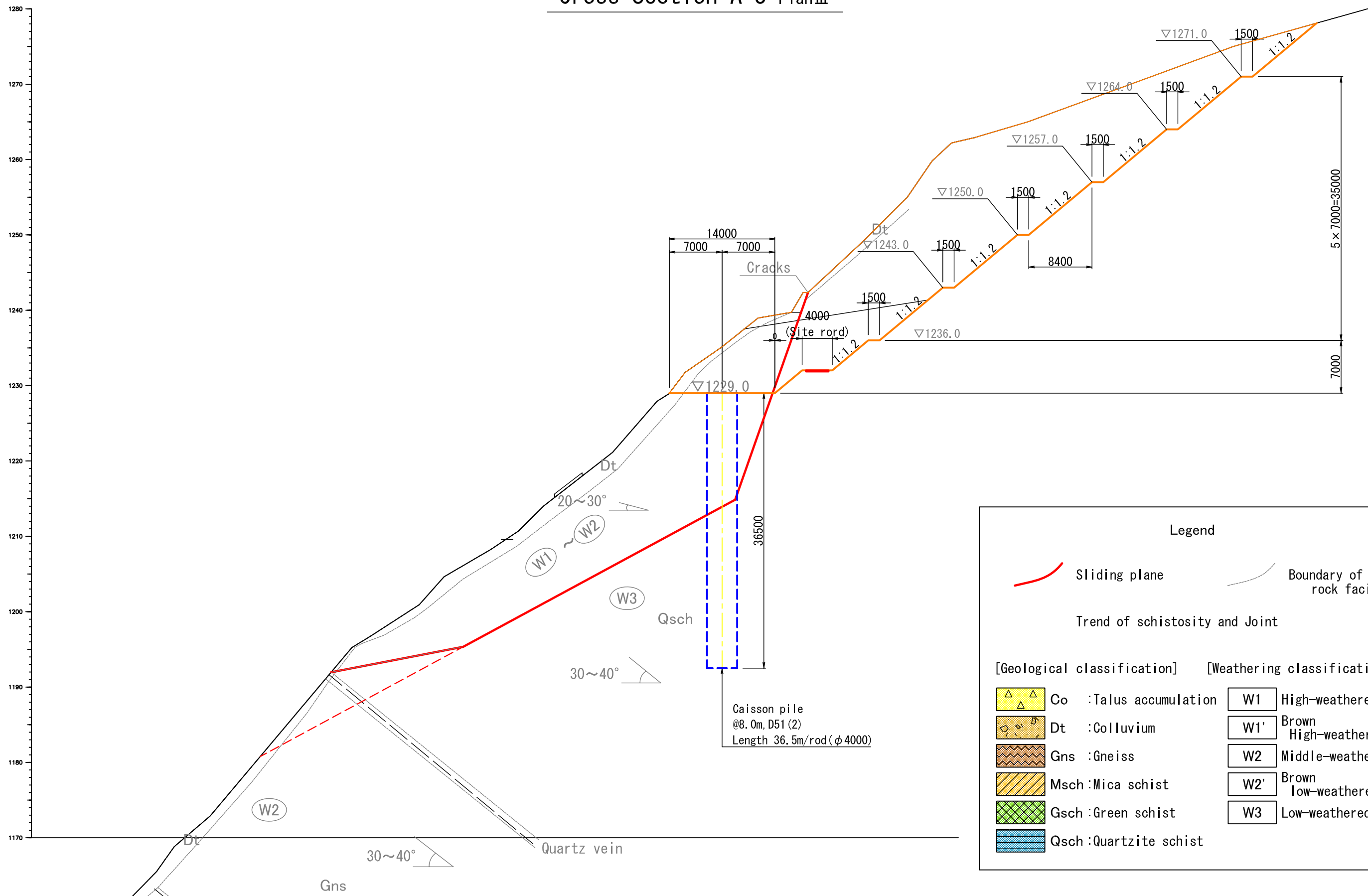
04				DESIGNED BY	
03				DRAWN BY	
02				ASSISTED BY	
01				RECOMMENDED BY	
REV.	DATE			APPROVED BY	

DESIGNED BY	
DRAWN BY	
ASSISTED BY	
RECOMMENDED BY	
APPROVED BY	

THE PREPARATORY SURVEY
ON THE PROJECT
FOR COUNTERMEASURE CONSTRUCTION
FOR THE LANDSLIDES
ON SINDHULI ROAD (SECTION II)

DATE	MARCH 2011	DWG.NO.	24	1:500
------	------------	---------	----	-------

Cross Section A-3 Plan III



Legend

Sliding plane
 Boundary of rock facies
 Trend of schistosity and Joint

[Geological classification]		[Weathering classification]	
	Co :Talus accumulation	W1	High-weathered
	Dt :Colluvium	W1'	Brown High-weathered
	Gns :Gneiss	W2	Middle-weathered
	Msch :Mica schist	W2'	Brown low-weathered
	Gsch :Green schist	W3	Low-weathered
	Qsch :Quartzite schist		

THE DEPARTMENT OF ROADS MINISTRY OF PHYSICAL PLANNING AND WORKS NEPAL	JAPAN INTERNATIONAL COOPERATION AGENCY NIPPON KOEI CO., LTD. (NK)	04			DESIGNED BY		THE PREPARATORY SURVEY ON THE PROJECT FOR COUNTERMEASURE CONSTRUCTION FOR THE LANDSLIDES ON SINDHULI ROAD (SECTION II)	1:500
		03			DRAWN BY			
		02			ASSISTED BY			
		01			RECOMMENDED BY			
		REV.	DATE		APPROVED BY			
							DATE	DWG.NO.
							MARCH 2011	25