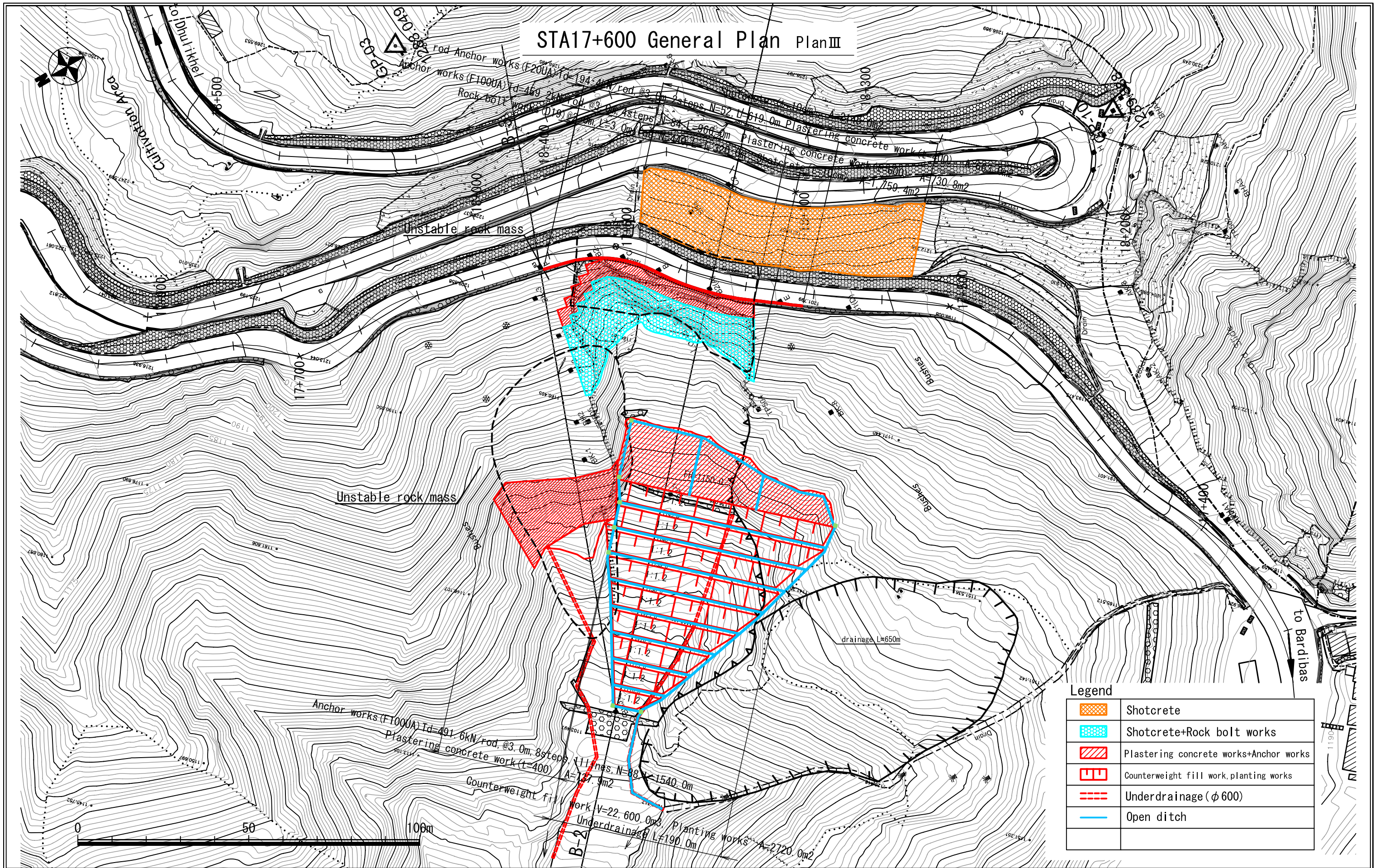


# STA17+600 General Plan Plan III



Legend	
	Shotcrete
	Shotcrete+Rock bolt works
	Plastering concrete works+Anchor works
	Counterweight fill work, planting works
	Underdrainage (φ 600)
	Open ditch

THE DEPARTMENT OF ROADS  
MINISTRY OF PHYSICAL PLANNING  
AND WORKS  
NEPAL

JAPAN INTERNATIONAL COOPERATION AGENCY  
 NIPPON KOEI CO., LTD. (NK)

04	
03	
02	
01	
REV.	DATE

DESIGNED BY	
DRAWN BY	
ASSISTED BY	
RECOMMENDED BY	
APPROVED BY	

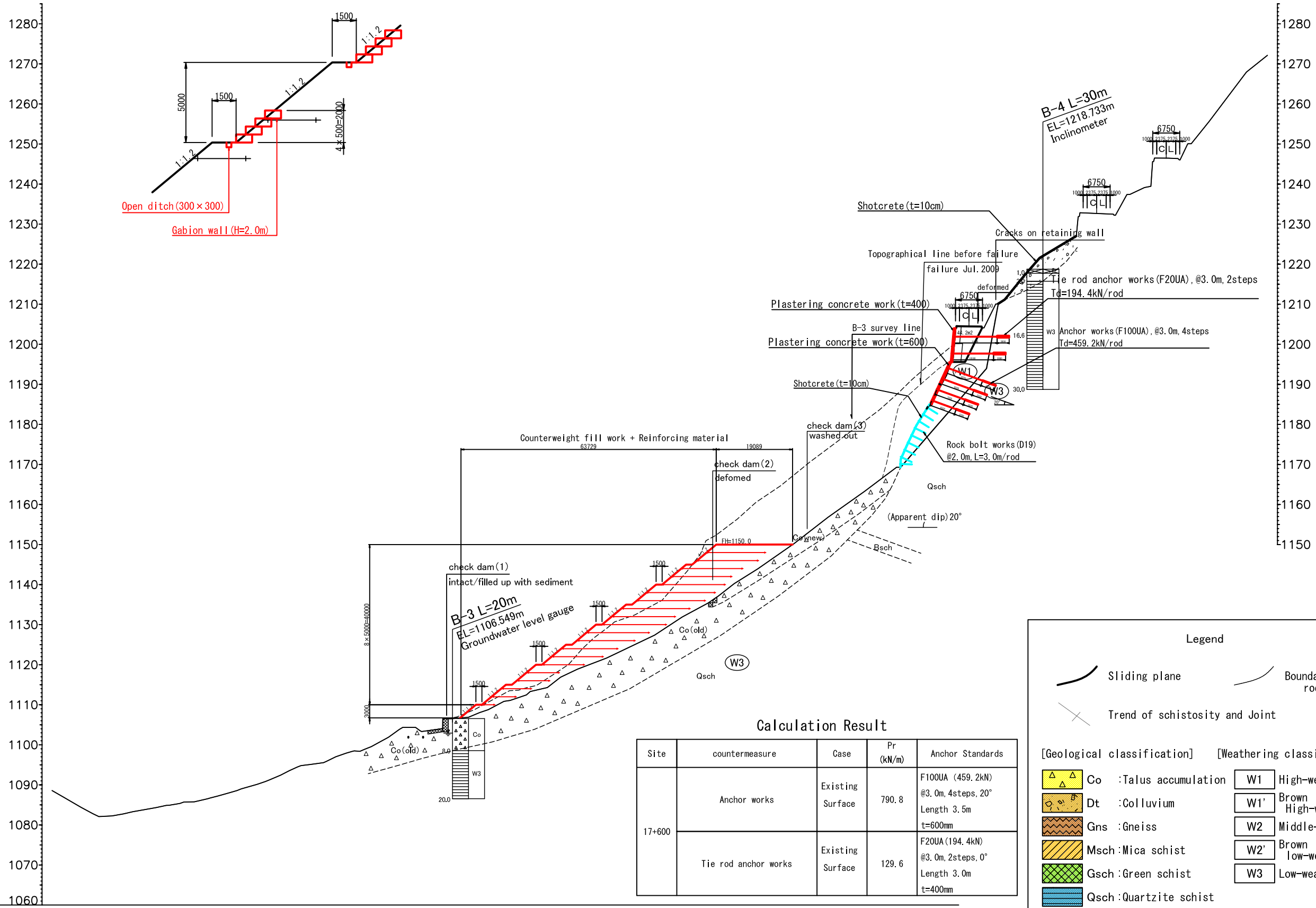
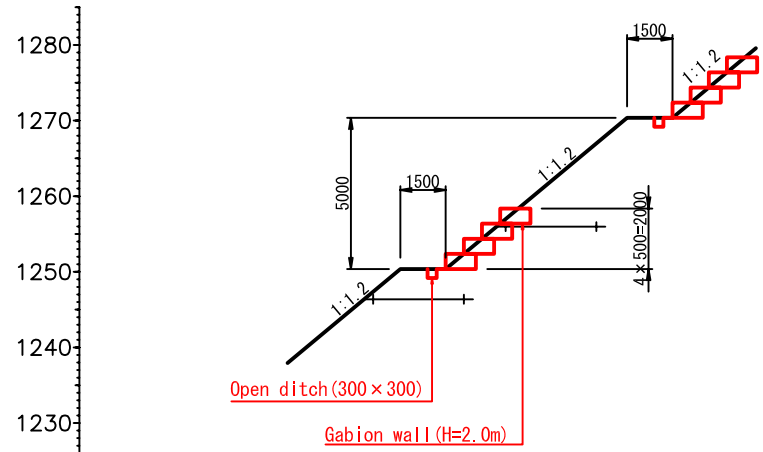
THE PREPARATORY SURVEY  
ON THE PROJECT  
FOR COUNTERMEASURE CONSTRUCTION  
FOR THE LANDSLIDES  
ON SINDHULI ROAD (SECTION II)

DATE		DWG.NO.		1:1000
MARCH 2011		16		



# Cross Section B-2 Plan III

## DETAILS



### Calculation Result

Site	countermeasure	Case	Pr (kN/m)	Anchor Standards
17+600	Anchor works	Existing Surface	790.8	F100UA (459.2kN) @3.0m, 4steps, 20° Length 3.5m t=600mm
	Tie rod anchor works	Existing Surface	129.6	F20UA (194.4kN) @3.0m, 2steps, 0° Length 3.0m t=400mm

**Legend**

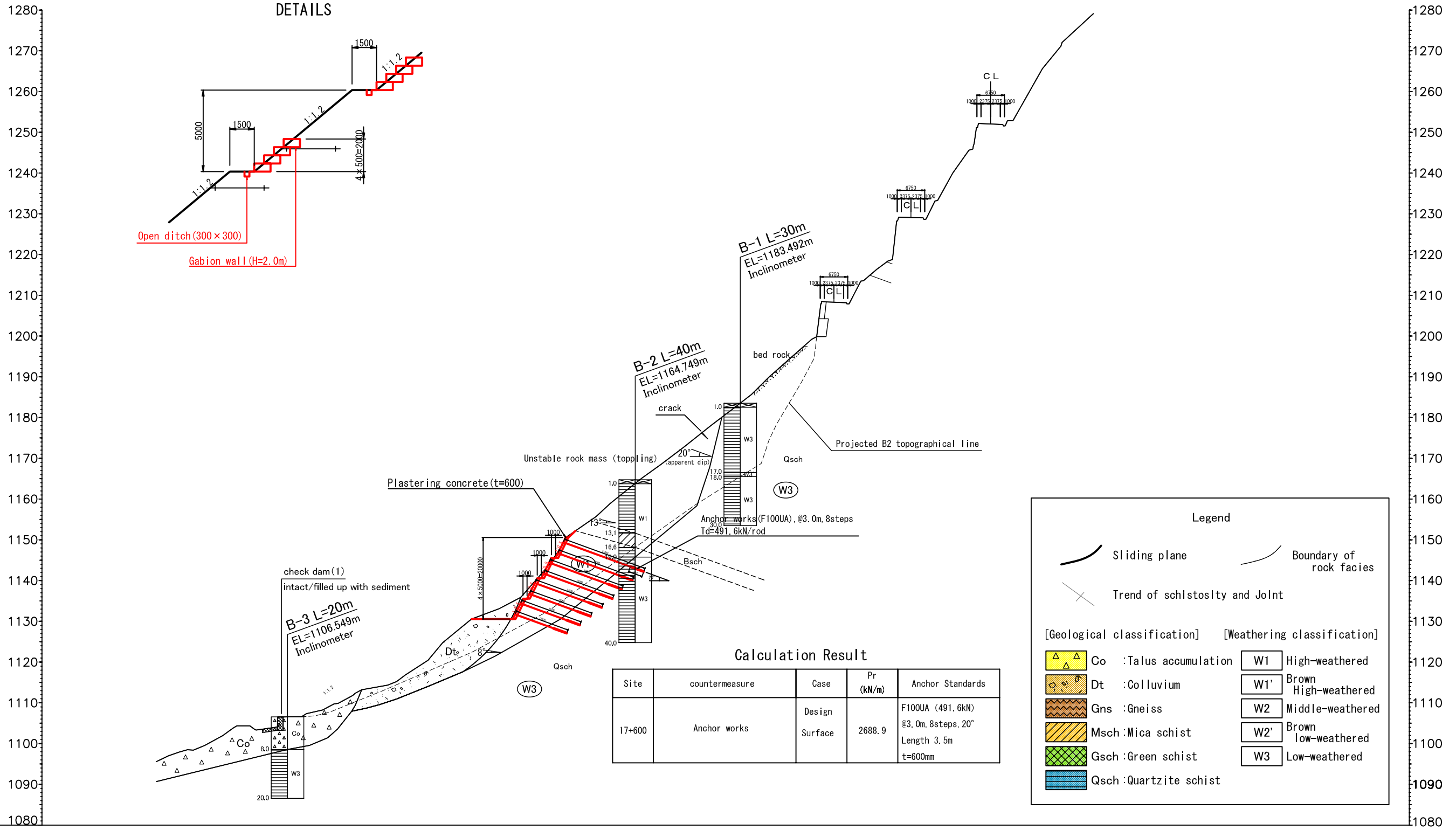
Sliding plane  
Boundary of rock facies  
Trend of schistosity and Joint

[Geological classification] [Weathering classification]

Co :Talus accumulation	W1 High-weathered
Dt :Colluvium	W1' High-weathered
Gns :Gneiss	W2 Middle-weathered
Msch :Mica schist	W2' Brown low-weathered
Gsch :Green schist	W3 Low-weathered
Qsch :Quartzite schist	

04		DESIGNED BY	
03		DRAWN BY	
02		ASSISTED BY	
01		RECOMMENDED BY	
REV.	DATE	APPROVED BY	

# Cross Section B-3 Plan III



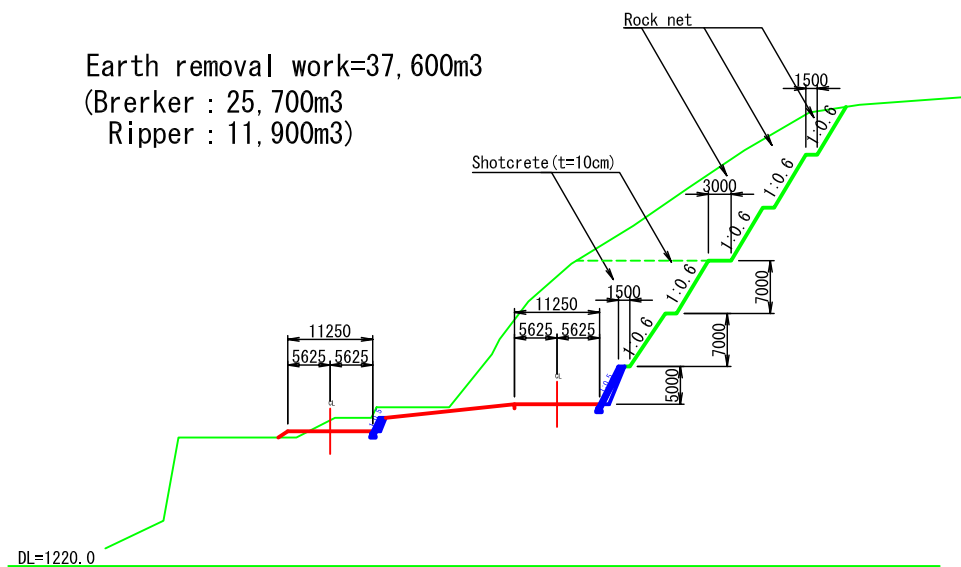




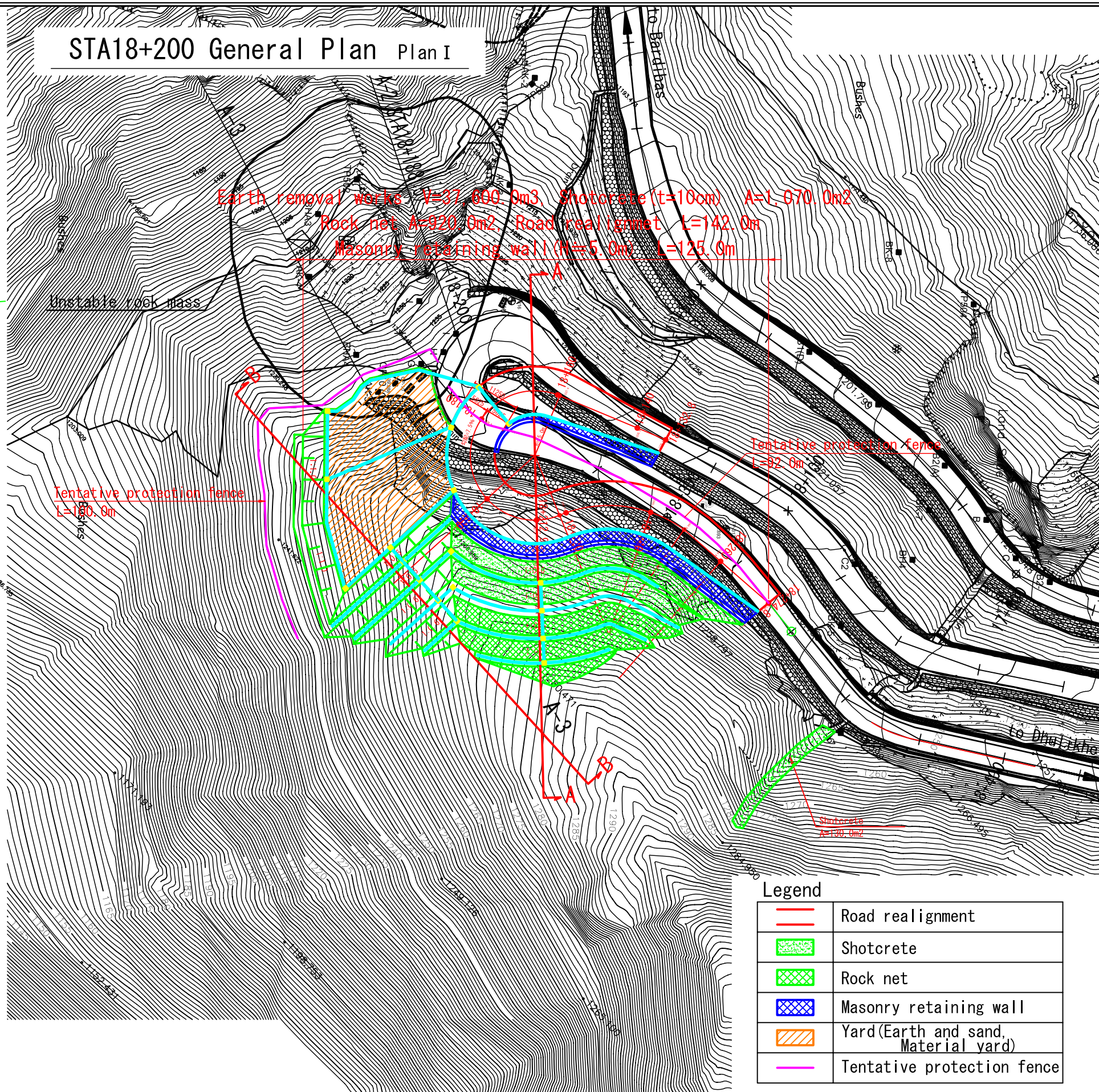
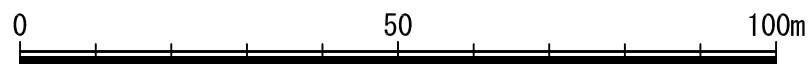
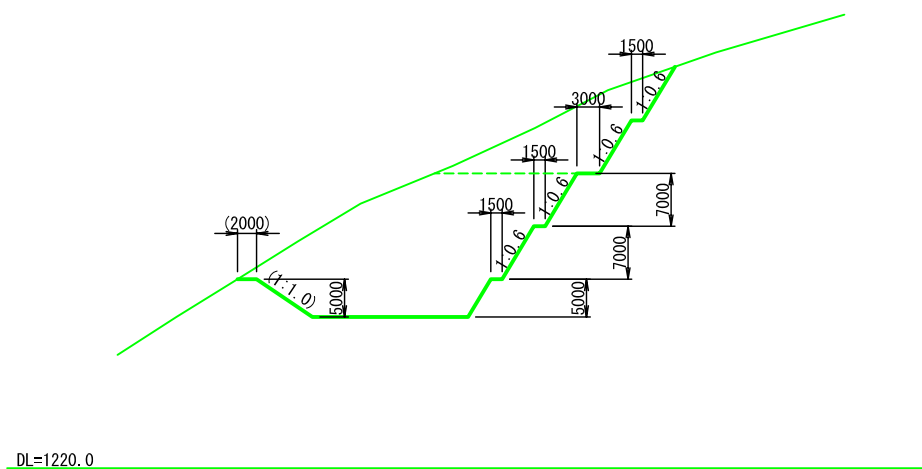
# STA18+200 General Plan Plan I

## A-A Cross Section

Earth removal work=37,600m<sup>3</sup>  
 (Breker : 25,700m<sup>3</sup>  
 Ripper : 11,900m<sup>3</sup>)



## B-B Cross Section



Legend	
	Road realignment
	Shotcrete
	Rock net
	Masonry retaining wall
	Yard (Earth and sand, Material yard)
	Tentative protection fence

THE DEPARTMENT OF ROADS  
 MINISTRY OF PHYSICAL PLANNING  
 AND WORKS  
 NEPAL

JAPAN INTERNATIONAL COOPERATION AGENCY  
 NIPPON KOEI CO., LTD. (NK)

04		DESIGNED BY	
03		DRAWN BY	
02		ASSISTED BY	
01		RECOMMENDED BY	
REV.	DATE	APPROVED BY	

THE PREPARATORY SURVEY  
 ON THE PROJECT  
 FOR COUNTERMEASURE CONSTRUCTION  
 FOR THE LANDSLIDES  
 ON SINDHULI ROAD (SECTION II)

		1:1000	
DATE	DWG.NO.		
MARCH 2011	19		