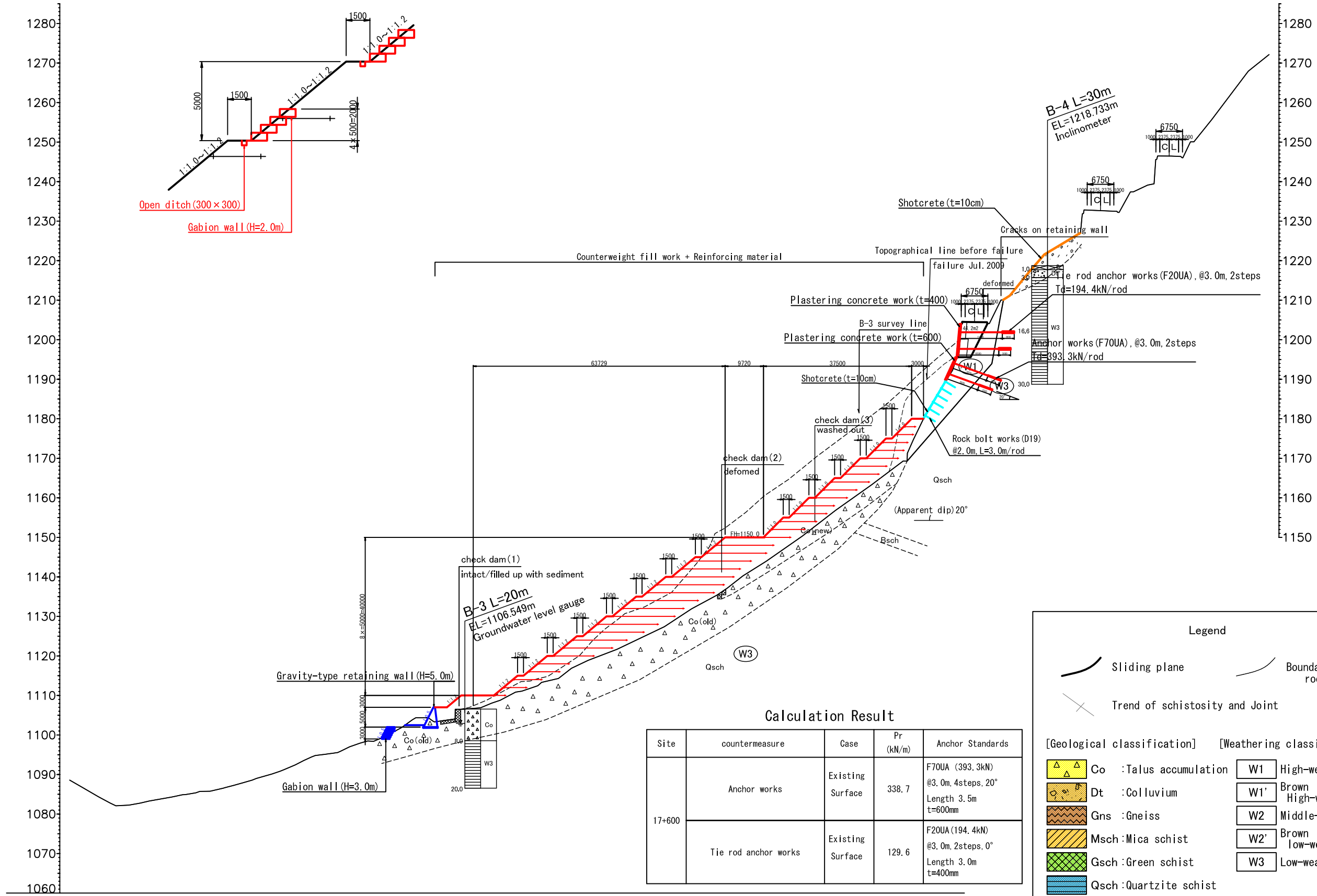
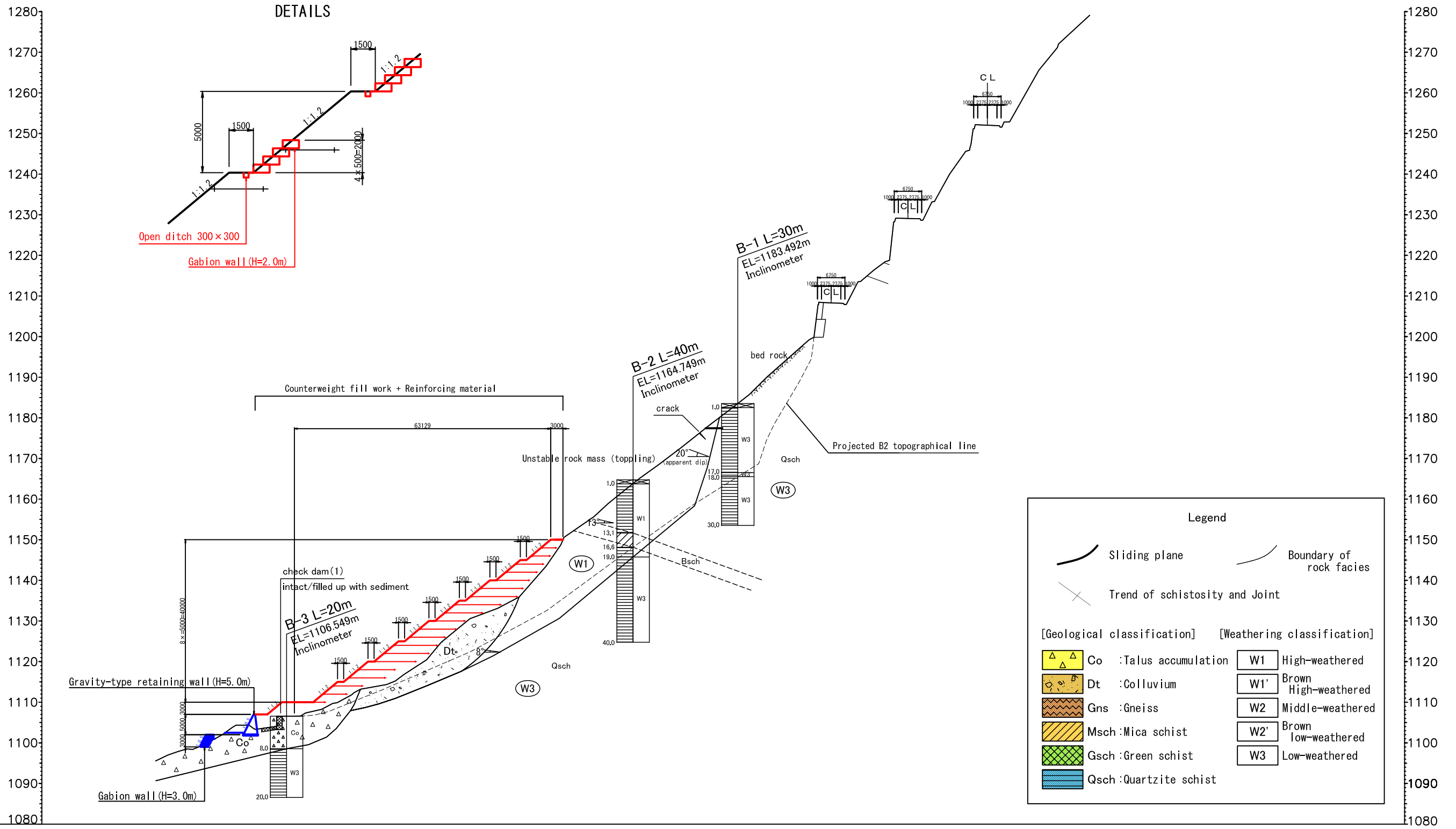


Cross Section B-2 Plan I

DETAILS



Cross Section B-3 Plan I



THE DEPARTMENT OF ROADS
MINISTRY OF PHYSICAL PLANNING
AND WORKS
NEPAL

JAPAN INTERNATIONAL COOPERATION AGENCY
JICA NIPPON KOEI CO., LTD. (NK)

04			
03			
02			
01			
REV.	DATE		

DESIGNED BY	
DRAWN BY	
ASSISTED BY	
RECOMMENDED BY	
APPROVED BY	

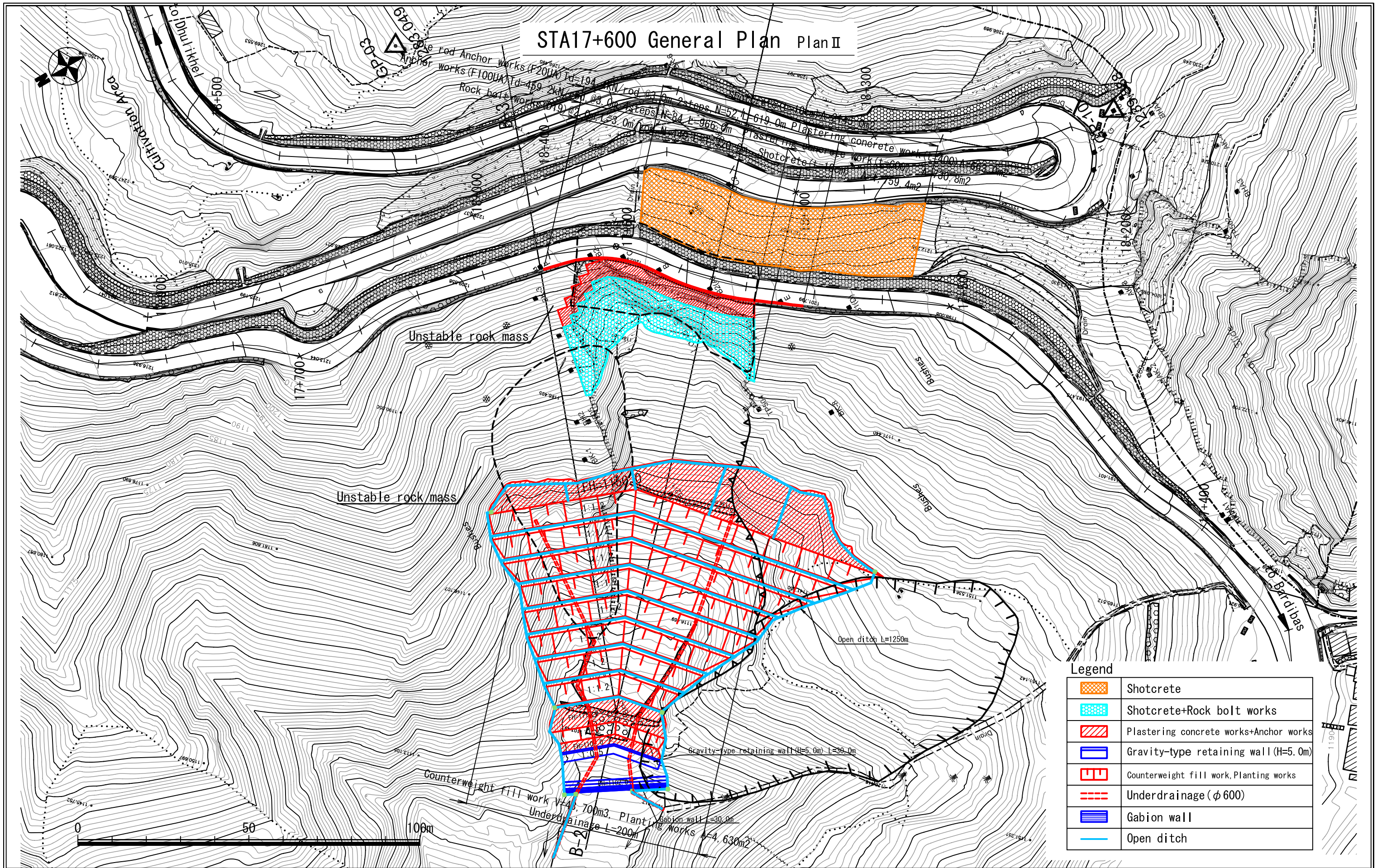
THE PREPARATORY SURVEY
ON THE PROJECT
FOR COUNTERMEASURE CONSTRUCTION
FOR THE LANDSLIDES
ON SINDHULI ROAD (SECTION II)

DATE
MARCH 2011

DWG.NO.
12

1:1000

STA17+600 General Plan Plan II



Legend	
	Shotcrete
	Shotcrete+Rock bolt works
	Plastering concrete works+Anchor works
	Counterweight fill work, Planting works
	Underdrainage (φ 600)
	Gabion wall
	Open ditch

THE DEPARTMENT OF ROADS
MINISTRY OF PHYSICAL PLANNING
AND WORKS
NEPAL

JAPAN INTERNATIONAL COOPERATION AGENCY
 NIPPON KOEI CO., LTD. (NK)

04		
03		
02		
01		
REV.	DATE	

DESIGNED BY	
DRAWN BY	
ASSISTED BY	
RECOMMENDED BY	
APPROVED BY	

THE PREPARATORY SURVEY
ON THE PROJECT
FOR COUNTERMEASURE CONSTRUCTION
FOR THE LANDSLIDES
ON SINDHULI ROAD (SECTION II)

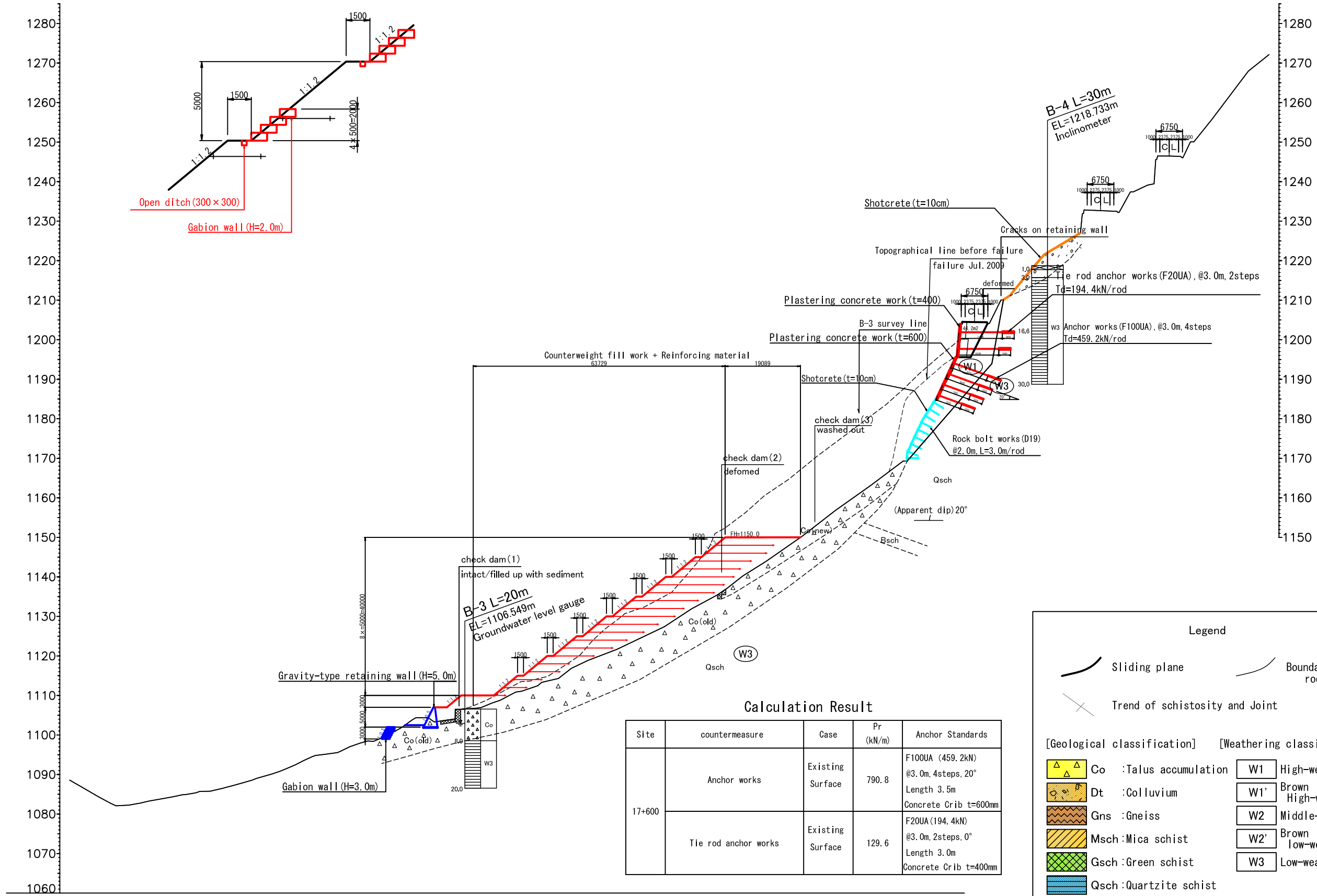
DATE
MARCH 2011

DWG.NO.
13

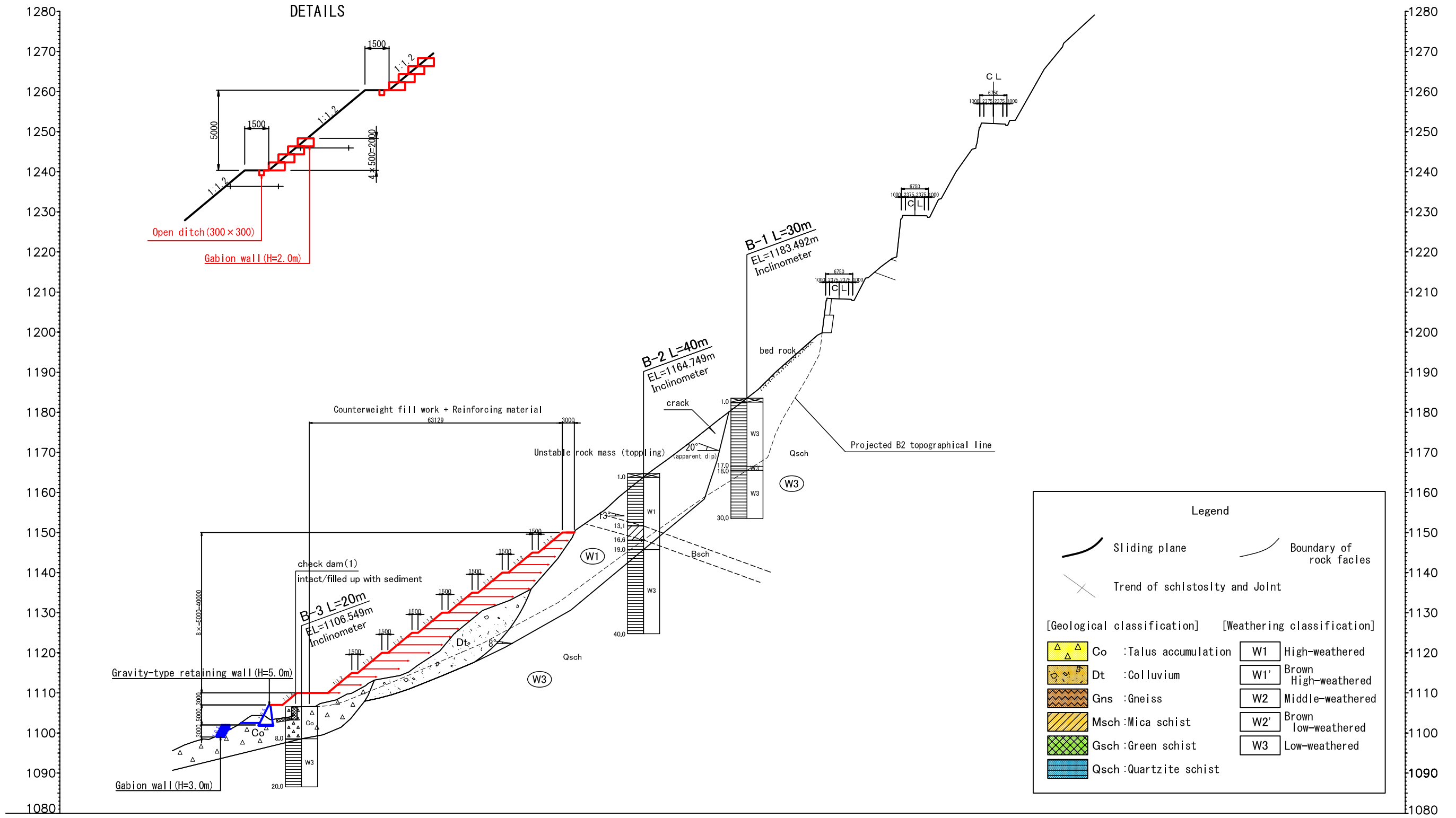
1:1000

Cross Section B-2 Plan II

DETAILS



Cross Section B-3 Plan II



Legend			
	Sliding plane		
	Boundary of rock facies		
	Trend of schistosity and Joint		
[Geological classification]	[Weathering classification]		
Co :Talus accumulation	<table border="1" style="font-size: 8px; width: 50px;"><tr><td style="text-align: center;">W1</td><td>High-weathered</td></tr></table>	W1	High-weathered
W1	High-weathered		
Dt :Colluvium	<table border="1" style="font-size: 8px; width: 50px;"><tr><td style="text-align: center;">W1'</td><td>Brown High-weathered</td></tr></table>	W1'	Brown High-weathered
W1'	Brown High-weathered		
Gns :Gneiss	<table border="1" style="font-size: 8px; width: 50px;"><tr><td style="text-align: center;">W2</td><td>Middle-weathered</td></tr></table>	W2	Middle-weathered
W2	Middle-weathered		
Msch :Mica schist	<table border="1" style="font-size: 8px; width: 50px;"><tr><td style="text-align: center;">W2'</td><td>Brown low-weathered</td></tr></table>	W2'	Brown low-weathered
W2'	Brown low-weathered		
Gsch :Green schist	<table border="1" style="font-size: 8px; width: 50px;"><tr><td style="text-align: center;">W3</td><td>Low-weathered</td></tr></table>	W3	Low-weathered
W3	Low-weathered		
Qsch :Quartzite schist			