



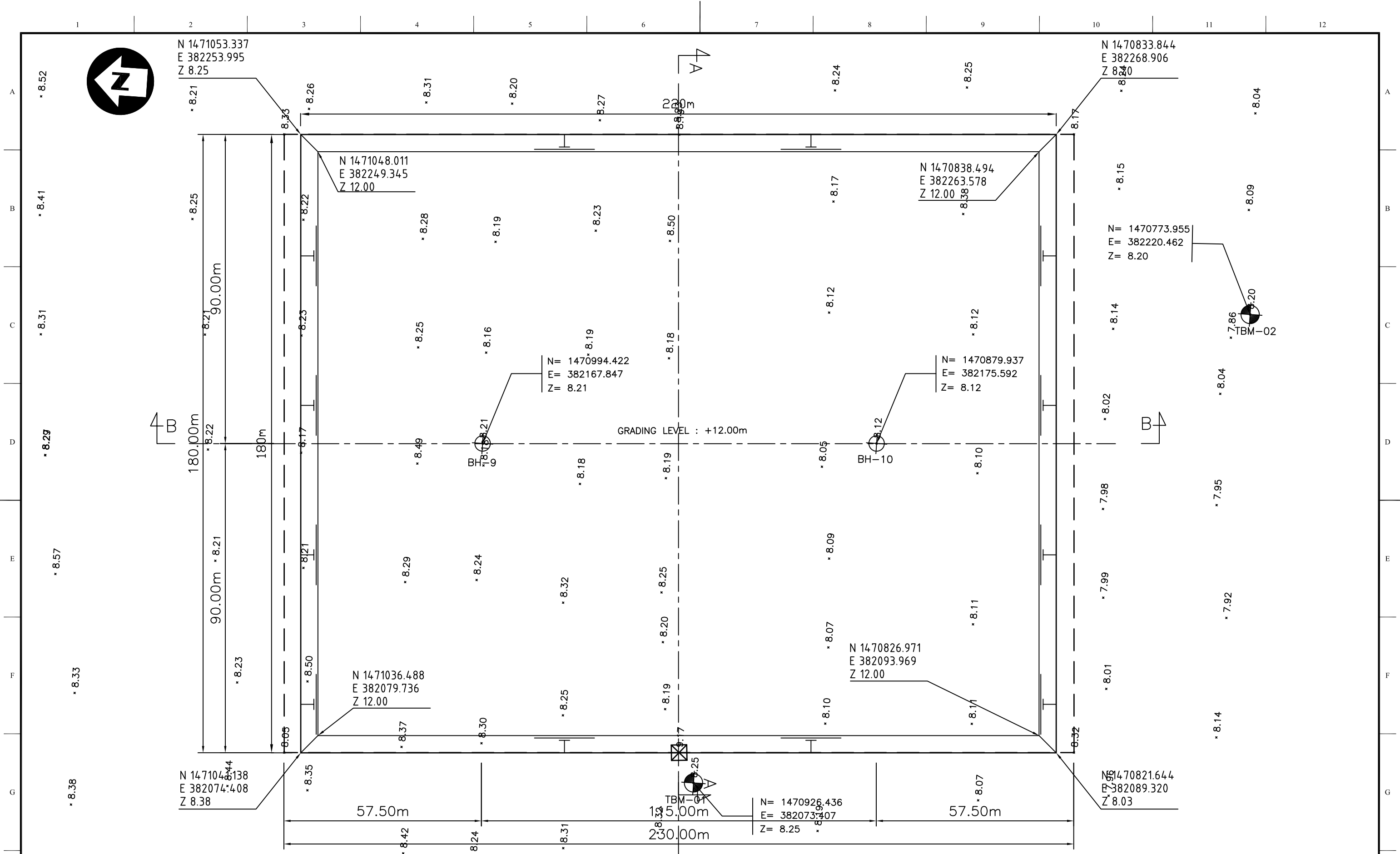




PROJECT: THE PREPARATORY STUDY ON THE SIEM REAP WATER SUPPLY EXPANSION PROJECT IN THE KINGDOM OF CAMBODIA											
CLIENT:			CONSULTANTS :			REV.	DESCRIPTION	DATE	SIGN.	TITLE:	
 SIEM REAP WATER SUPPLY AUTHORITY  JAPAN INTERNATIONAL COOPERATION AGENCY			 NJS CONSULTANTS CO., LTD. - JAPAN  KOKUSAI KOGYO CO., LTD.-JAPAN							Proposed Water Supply Service Area ( Existing , F/S , LTDP )	
										SCALE:	Not To Scale
										DATE:	03/2010
										DRAWING NO.:	
										SR-00-G-10	





PROJECT: THE PREPARATORY STUDY ON THE SIEM REAP WATER SUPPLY EXPANSION PROJECT IN THE KINGDOM OF CAMBODIA

CLIENT:

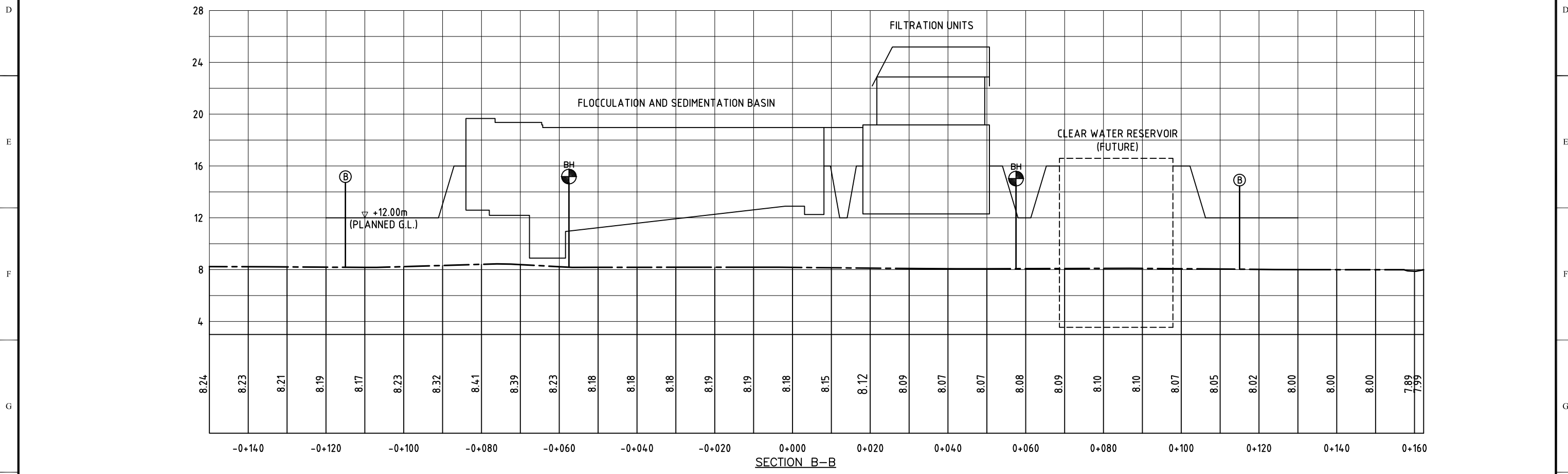
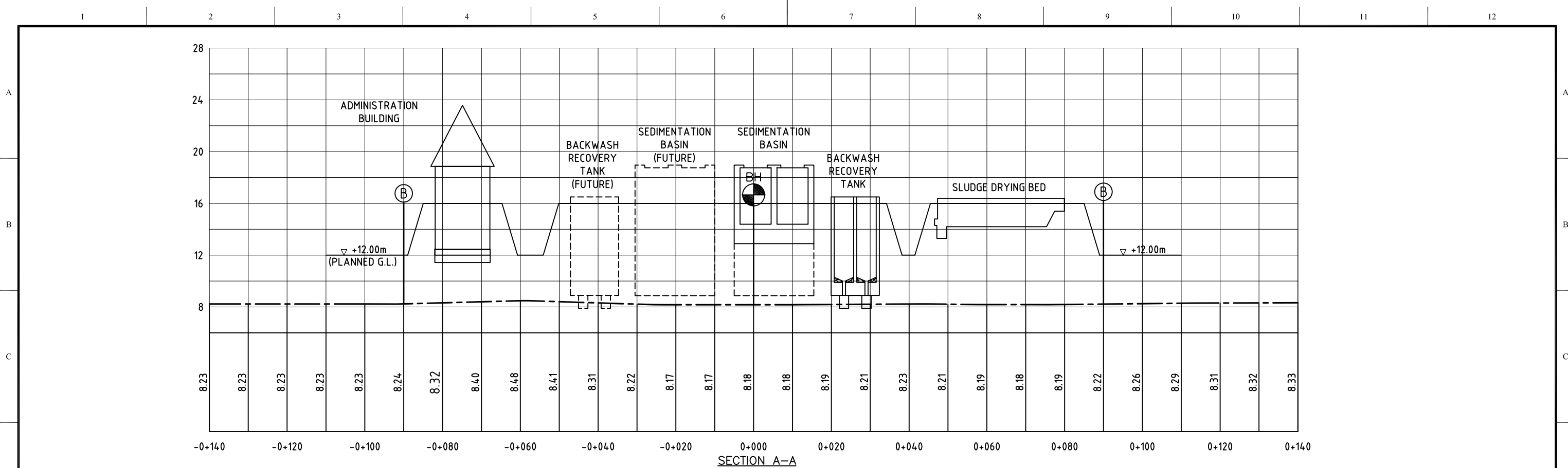
	SIEM REAP WATER SUPPLY AUTHORITY
	JAPAN INTERNATIONAL COOPERATION AGENCY

CONSULTANTS :

	NJS CONSULTANTS CO., LTD. - JAPAN
	KOKUSAI KOGYO CO., LTD.-JAPAN

REV.	DESCRIPTION	DATE	SIGN.



TITLE: WATER TREATMENT PLANT SITE GRADING PLAN		
SCALE: 1 : 1000	DATE: 30/09/2009	DRAWING NO.: SR-00-C-01





PROJECT:

THE PREPARATORY STUDY ON THE SIEM REAP WATER SUPPLY EXPANSION PROJECT IN THE KINGDOM OF CAMBODIA

CLIENT:

 SIEM REAP WATER SUPPLY AUTHORITY  
 JAPAN INTERNATIONAL COOPERATION AGENCY

CONSULTANTS :

 NJS CONSULTANTS CO., LTD. - JAPAN  
 KOKUSAI KOGYO CO., LTD.-JAPAN

REV.	DESCRIPTION	DATE	SIGN.

TITLE:

WATER TREATMENT PLANT SITE GRADING PROFILE

SCALE:

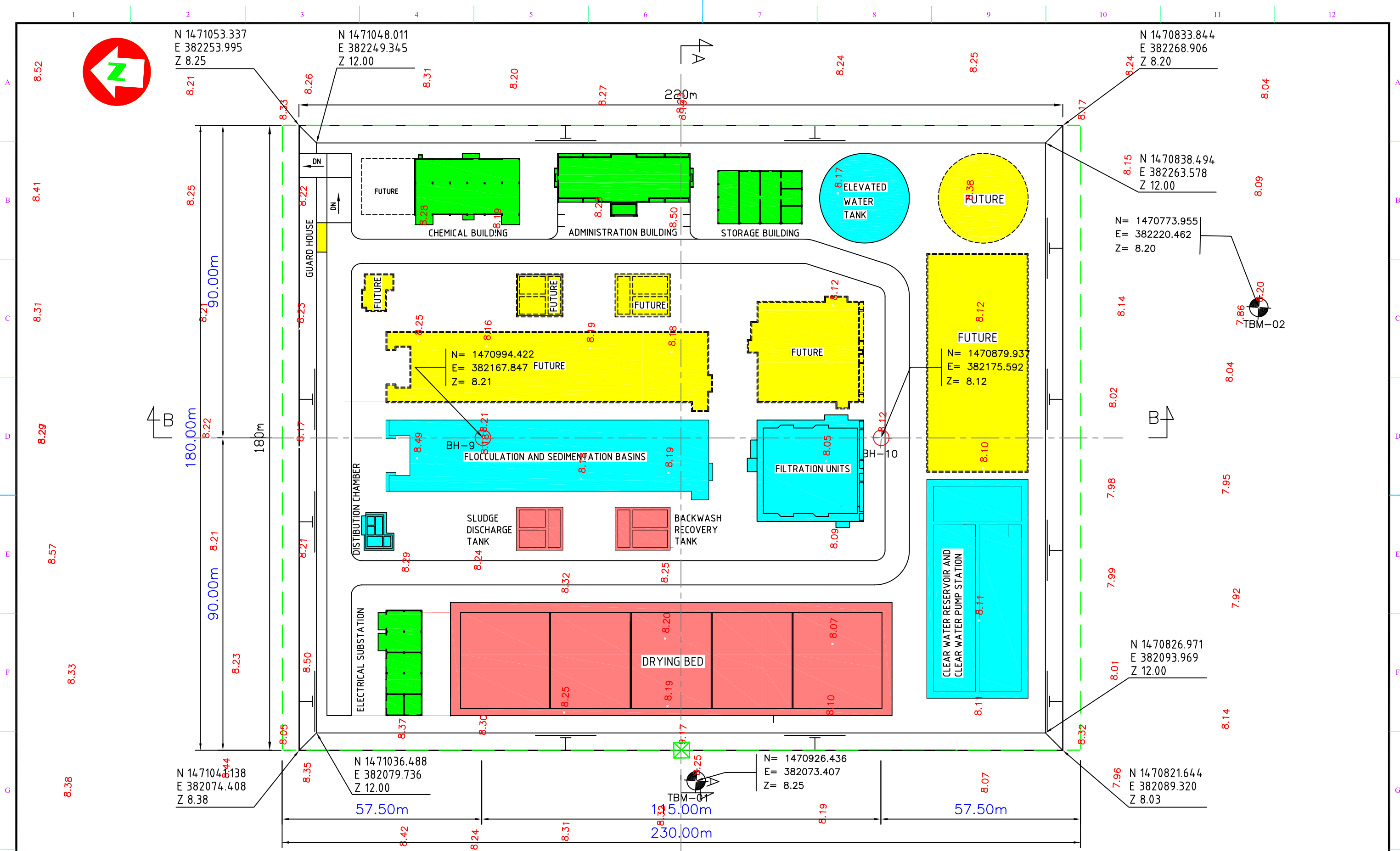
H 1:1000  
V 1:300

DATE:

30/09/2009

DRAWING NO.:

SR-00-C-02



PROJECT: THE PREPARATORY STUDY ON THE SIEM REAP WATER SUPPLY EXPANSION PROJECT IN THE KINGDOM OF CAMBODIA

CLIENT:

 SIEM REAP WATER SUPPLY AUTHORITY

 JAPAN INTERNATIONAL COOPERATION AGENCY

CONSULTANTS :

 NJS CONSULTANTS CO., LTD. - JAPAN

 KOKUSAI KOGYO CO., LTD.-JAPAN

REV.	DESCRIPTION	DATE	SIGN.

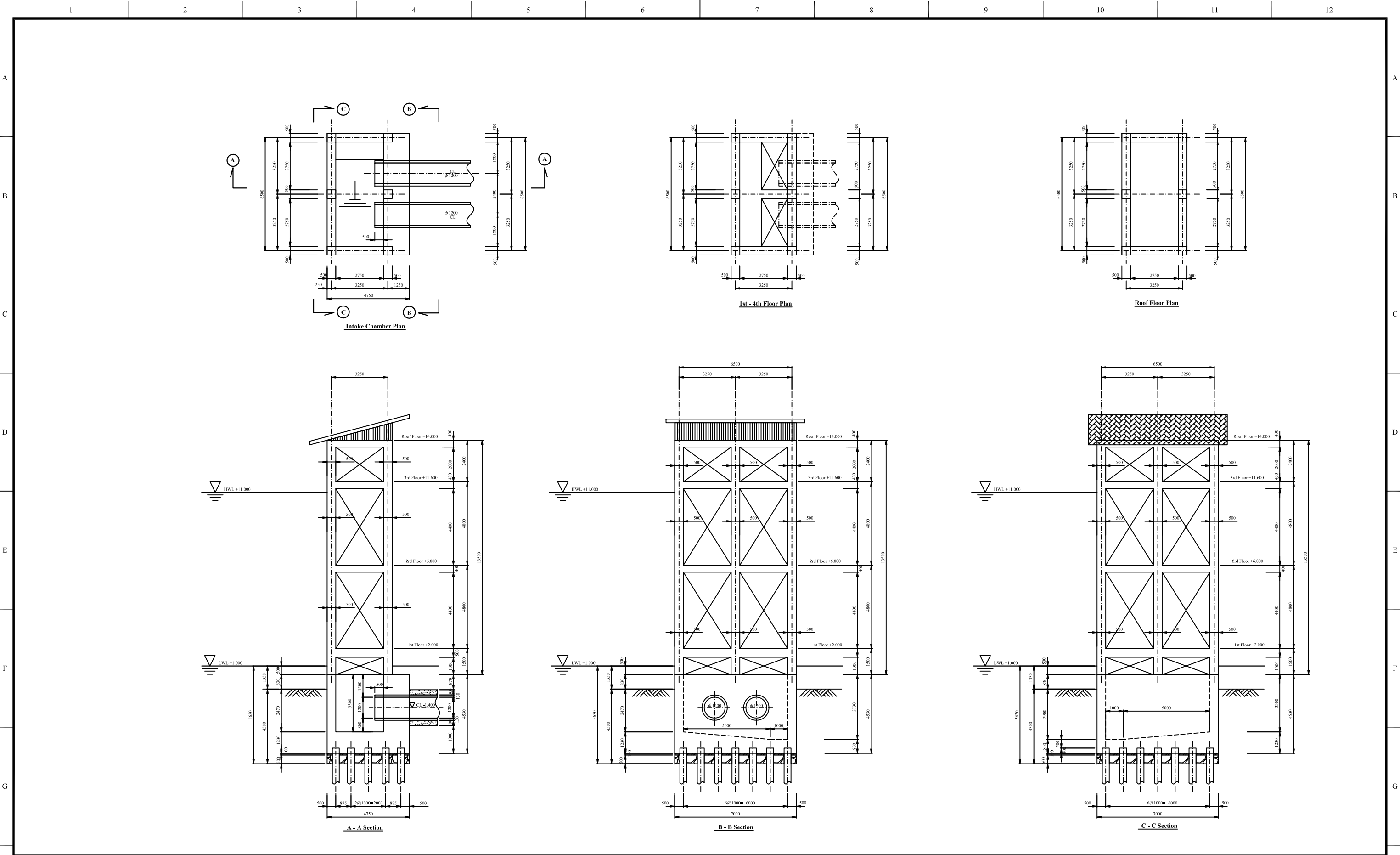
TITLE: WATER TREATMENT PLANT SITEWORK AND LANSCAPING PLAN



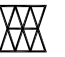

SCALE: 1 : 1000

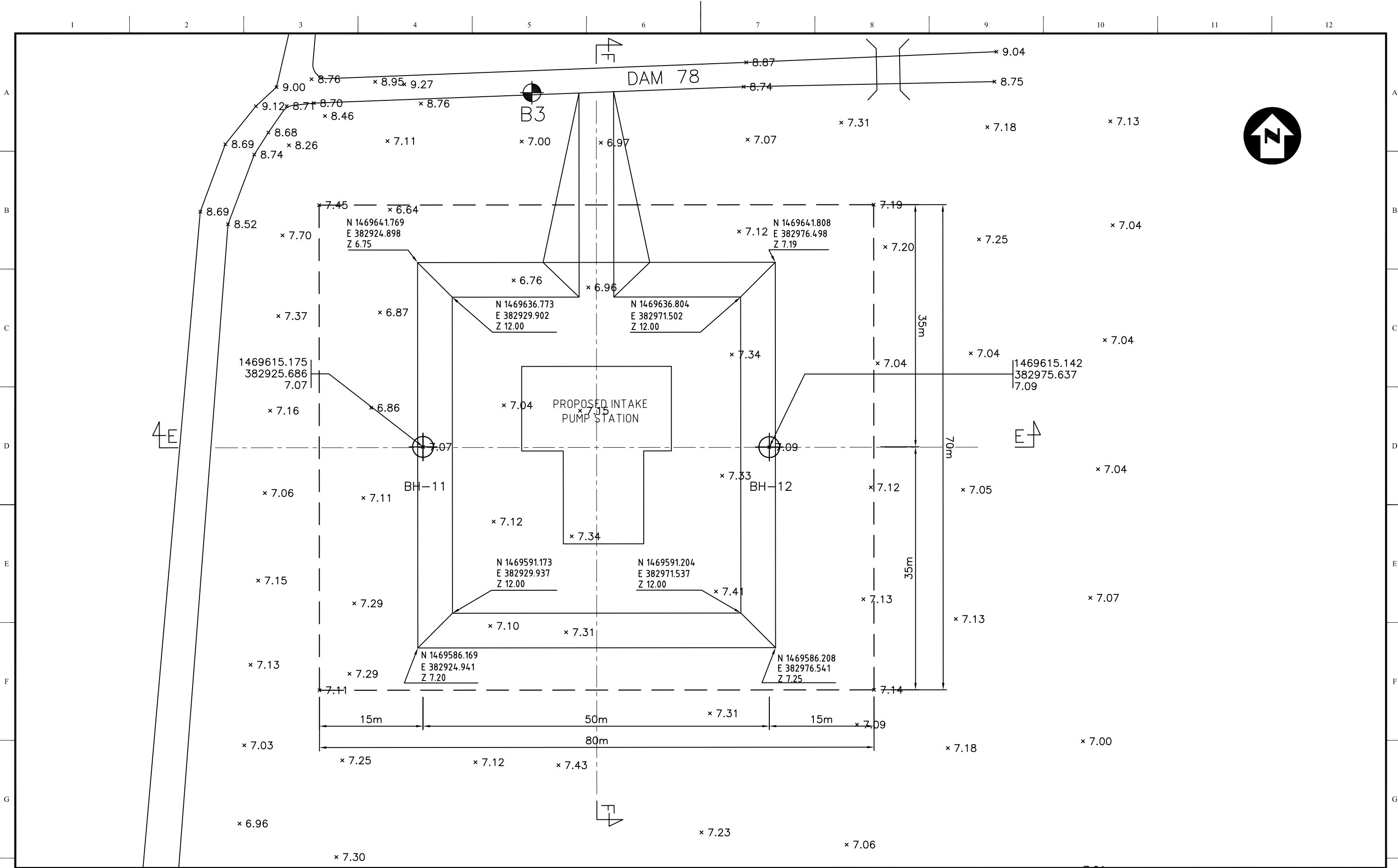
DATE: 30/09/2009





DRAWING NO.: SR-00-C-03



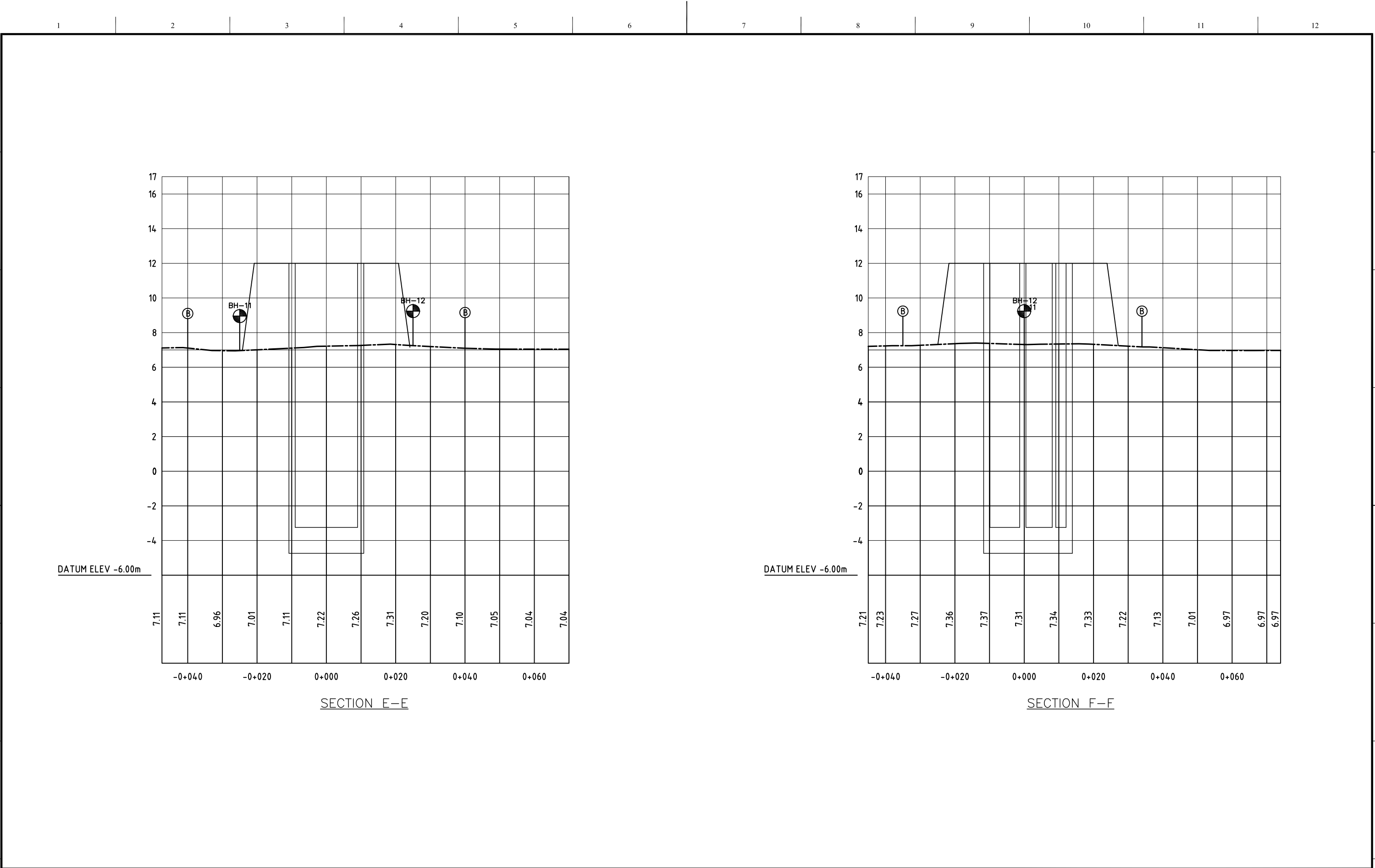




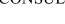

PROJECT: THE PREPARATORY STUDY ON THE SIEM REAP WATER SUPPLY EXPANSION PROJECT IN THE KINGDOM OF CAMBODIA											
CLIENT:  SIEM REAP WATER SUPPLY AUTHORITY  JAPAN INTERNATIONAL COOPERATION AGENCY	CONSULTANTS :  NJS CONSULTANTS CO., LTD. - JAPAN  KOKUSAI KOGYO CO., LTD. - JAPAN			REV.	DESCRIPTION	DATE	SIGN.	TITLE RAW WATER INTAKE CHAMBER PLAN AND SECTIONS			
								SCALE: 1/200	DATE: 30/09/2009	DRAWING NO.: SR-01-C-04	



PROJECT: THE PREPARATORY STUDY ON THE SIEM REAP WATER SUPPLY EXPANSION PROJECT IN THE KINGDOM OF CAMBODIA											
CLIENT:  SIEM REAP WATER SUPPLY AUTHORITY  JAPAN INTERNATIONAL COOPERATION AGENCY	CONSULTANTS :  NJS CONSULTANTS CO., LTD. - JAPAN  KOKUSAI KOGYO CO., LTD.-JAPAN				REV.	DESCRIPTION	DATE	SIGN.	TITLE: RAW WATER INTAKE PUMP STATION SITEWORKS AND LANDSCAPING PLAN		
									SCALE: 1:500		
									DATE: 30/09/2009		
									DRAWING NO.: SR-02-C-05		

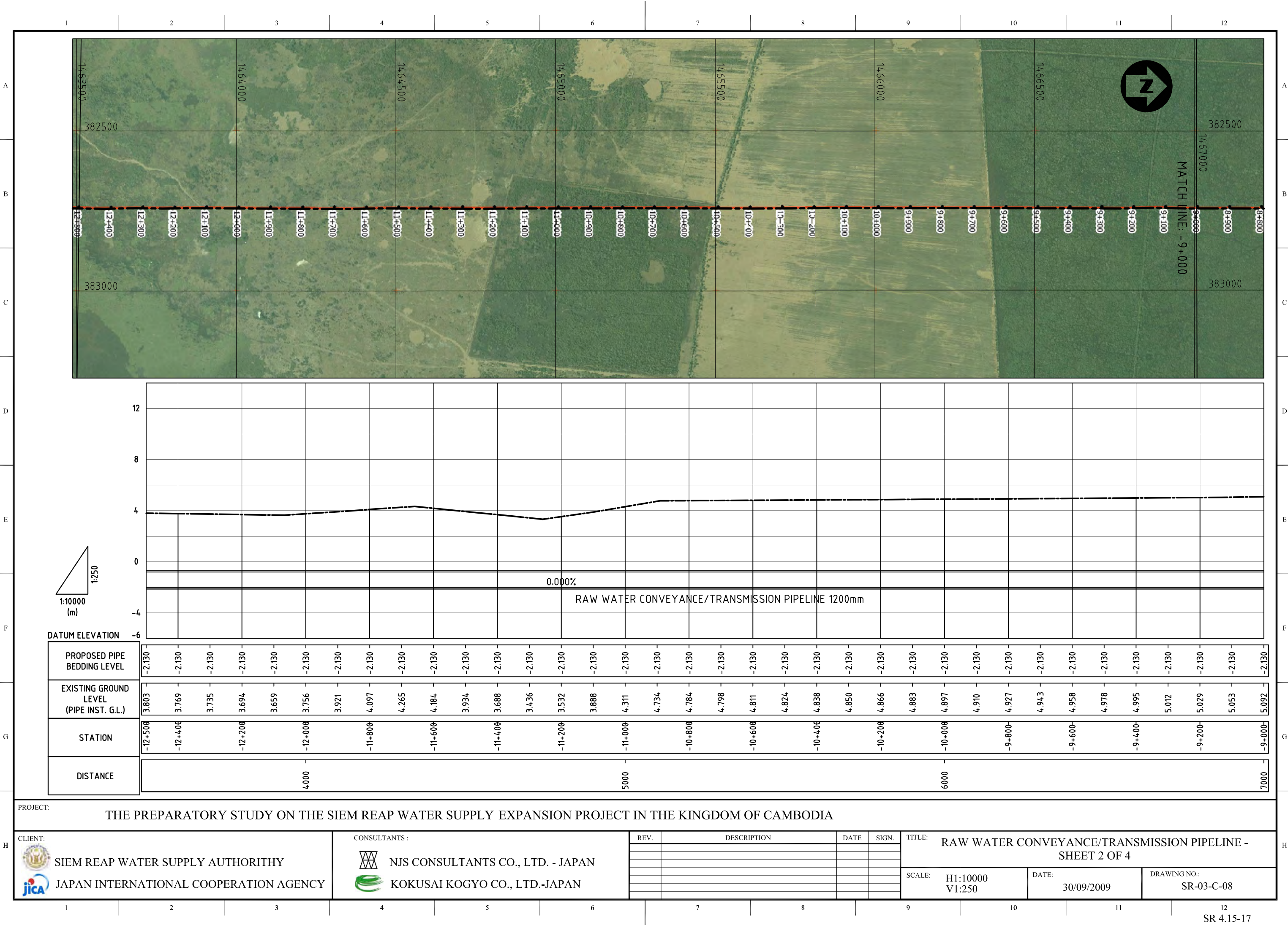




PROJECT: THE PREPARATORY STUDY ON THE SIEM REAP WATER SUPPLY EXPANSION PROJECT IN THE KINGDOM OF CAMBODIA												
<div>CLIENT:</div> <div> SIEM REAP WATER SUPPLY AUTHORITY</div> <div> JAPAN INTERNATIONAL COOPERATION AGENCY</div>			<div>CONSULTANTS :</div> <div> NJS CONSULTANTS CO., LTD. - JAPAN</div> <div> KOKUSAI KOGYO CO., LTD.-JAPAN</div>			REV.	DESCRIPTION	DATE	SIGN.	TITLE: RAW WATER INTAKE PUMP STATION GRADING PROFILE		
						SCALE: H 1:1000 V 1:200		DATE: 30/09/2009		DRAWING NO.: SR-02-C-06		



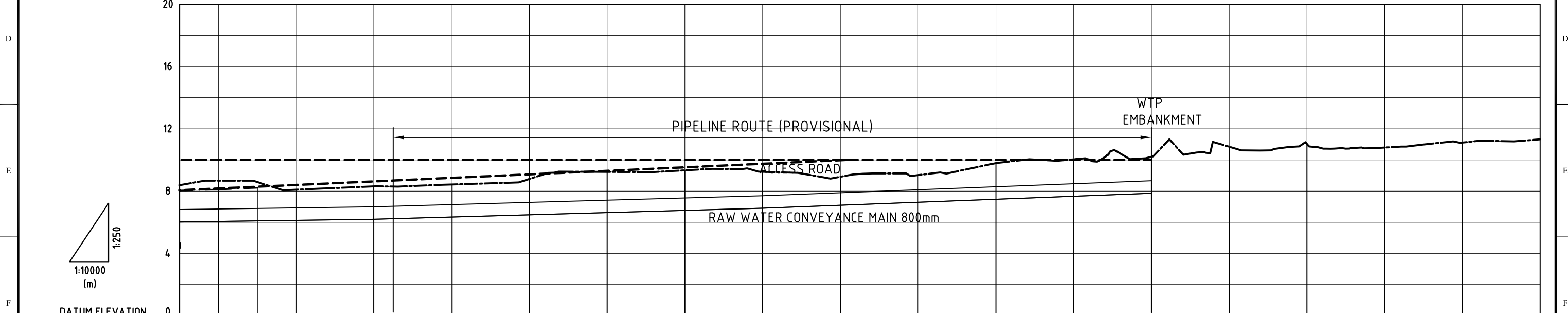
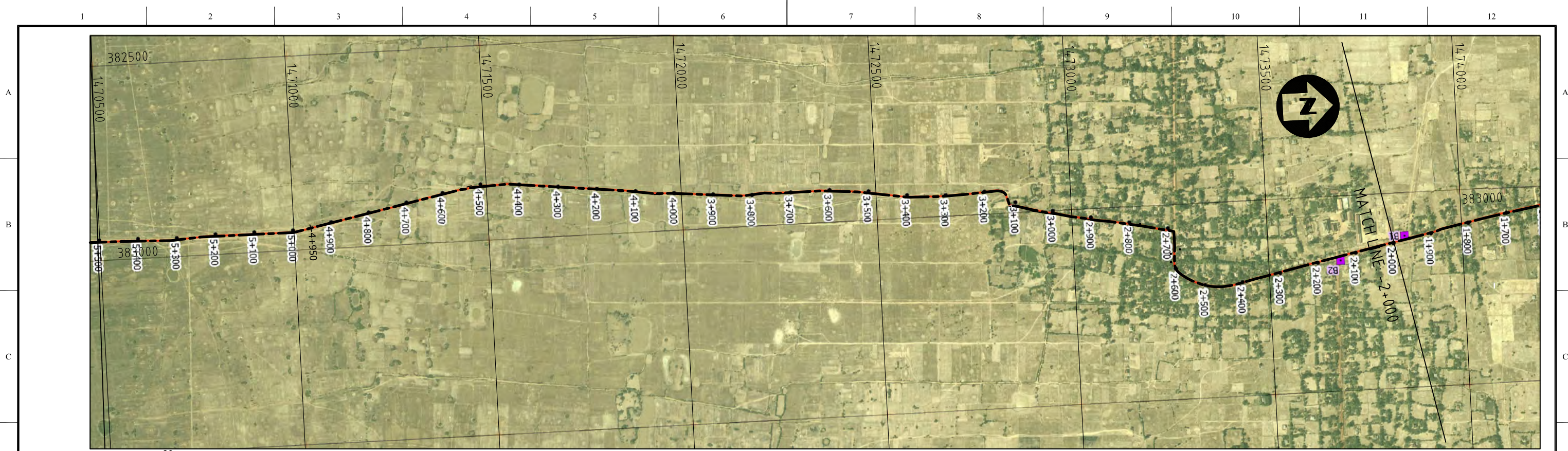















DATUM ELEVATION	0
PROPOSED PIPE BEDDING LEVEL	6.192
EXISTING GROUND LEVEL (PIPE INST. G.L.)	8.382 (8.037) 8.669 (8.102) 8.578 (8.216) 8.089 8.198 8.304 8.331 8.427 8.502 8.779 9.250 9.236 9.223 9.336 9.423 9.245 9.132 8.921 9.135 9.026 9.270 9.797 10.024 10.042 10.603 10.204 10.412 10.852 10.614 11.031 10.727 10.798 10.993 11.118 11.211 11.324
STATION	-5+500 -5+400 -5+200 -5+000 -4+950 -4+800 -4+600 -4+400 -4+200 -4+000 -3+800 -3+600 -3+400 -3+200 -3+000 -2+800 -2+600 -2+400 -2+200 -2+000
DISTANCE	11000 12000 13000 14000

PROJECT: THE PREPARATORY STUDY ON THE SIEM REAP WATER SUPPLY EXPANSION PROJECT IN THE KINGDOM OF CAMBODIA



SIEM REAP WATER SUPPLY AUTHORITY  
JAPAN INTERNATIONAL COOPERATION AGENCY

CONSULTANTS :

NJS CONSULTANTS CO., LTD. - JAPAN  
KOKUSAI KOGYO CO., LTD.-JAPAN

REV.	DESCRIPTION	DATE	SIGN.

TITLE: RAW WATER CONVEYANCE/TRANSMISSION PIPELINE - SHEET 4 OF 4

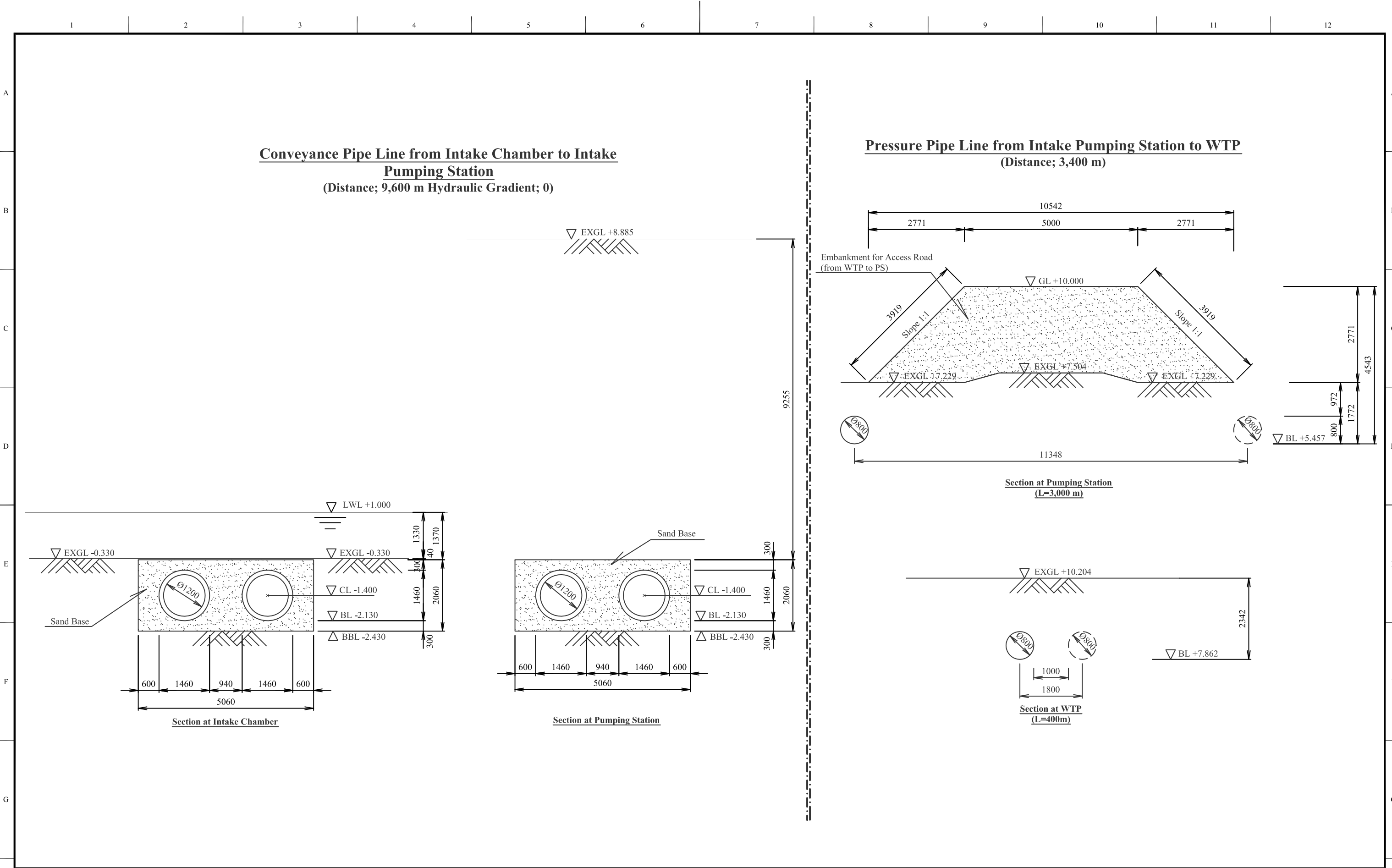
SCALE: H1:10000  
V1:250

DATE: 30/09/2009

DRAWING NO.: SR-03-C-10

SR 4.15-19



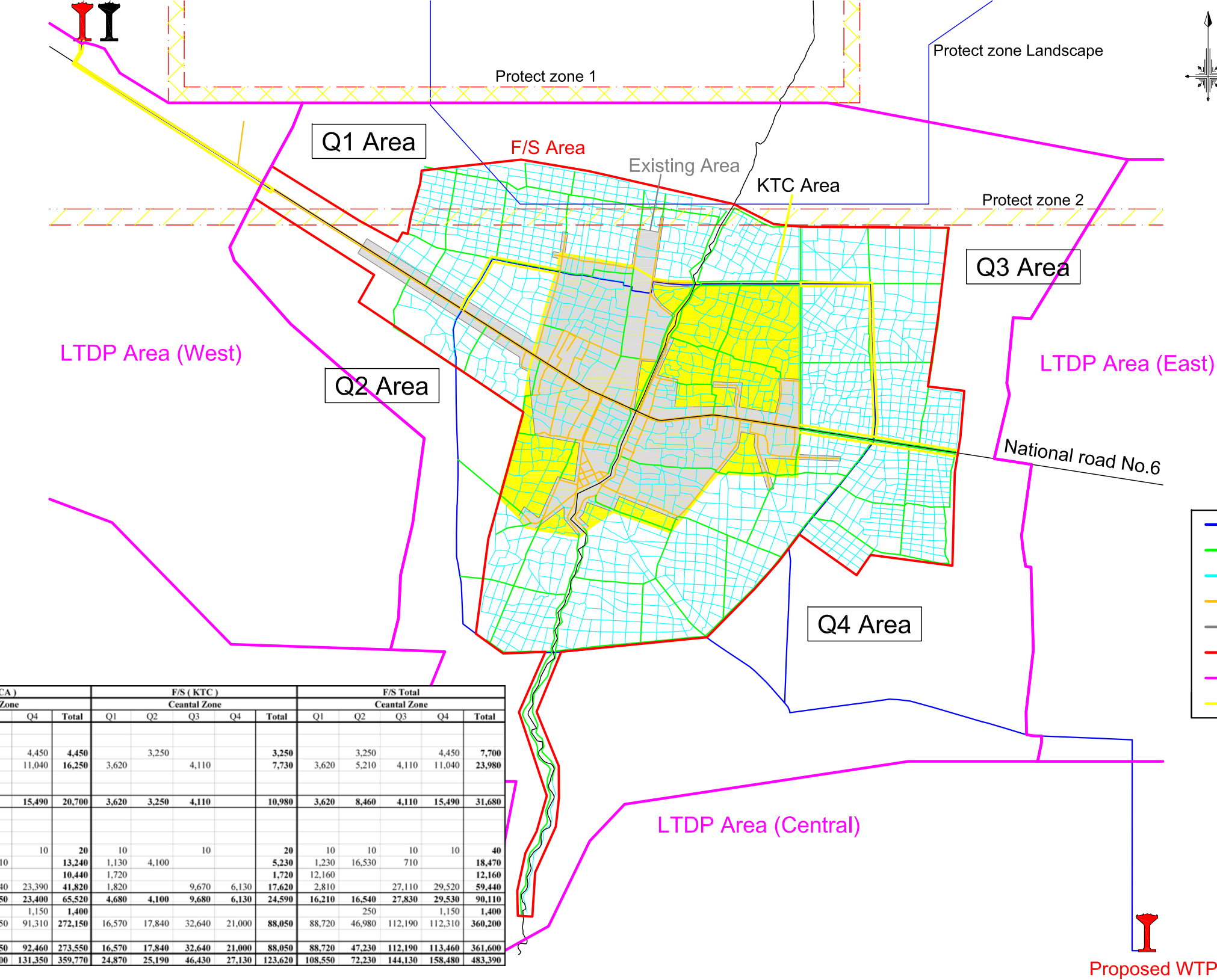


PROJECT: THE PREPARATORY STUDY ON THE SIEM REAP WATER SUPPLY EXPANSION PROJECT IN THE KINGDOM OF CAMBODIA											
CLIENT: <div><div></div><div>SIEM REAP WATER SUPPLY AUTHORITY</div><div></div><div>JAPAN INTERNATIONAL COOPERATION AGENCY</div></div>	CONSULTANTS : <div><div></div><div>NJS CONSULTANTS CO., LTD. - JAPAN</div><div></div><div>KOKUSAI KOGYO CO., LTD. - JAPAN</div></div>				REV.	DESCRIPTION	DATE	SIGN.	TITLE		
									RAW WATER CONVEYANCE/TRANSMISSION PIPELINE SECTIONS		
									SCALE: 1/100		
									DATE: 30/09/2009		DRAWING NO.:
											SR-03-C-11



Distribution Network General Plan ( F/S )

KTC WTP Existing WTP



Legend	
<span style="color: blue;">—</span>	Distribution Main Pipe : More than φ500
<span style="color: green;">—</span>	Distribution Sub Main Pipe : φ150 - φ450
<span style="color: cyan;">—</span>	Distribution Branch Pipe : Less than φ100
<span style="color: orange;">—</span>	Distribution Existing Pipe : φ50 - φ500
<span style="color: grey;">—</span>	Existing Water Supply Service Area
<span style="color: red;">—</span>	F/S Water Supply Service Area
<span style="color: magenta;">—</span>	LTDP Water Supply Service Area
<span style="color: yellow;">—</span>	KTC Water Supply Service Area

Category	Material	Diameter	F/S (JICA) Ceantal Zone					F/S (KTC) Ceantal Zone					F/S Total Ceantal Zone				
			Q1	Q2	Q3	Q4	Total	Q1	Q2	Q3	Q4	Total	Q1	Q2	Q3	Q4	Total
Main	DCIP	1,000															
Main	DCIP	900															
Main	DCIP	800				4,450	4,450		3,250			3,250		3,250		4,450	7,700
Main	DCIP	700		5,210		11,040	16,250	3,620		4,110		7,730	3,620	5,210	4,110	11,040	23,980
Main	DCIP	600															
Main	DCIP	500															
Sub Total	-	-		5,210		15,490	20,700	3,620	3,250	4,110		10,980	3,620	8,460	4,110	15,490	31,680
Sub Main	DCIP	450															
Sub Main	DCIP	400															
Sub Main	DCIP	350															
Sub Main	DCIP	300															
Sub Main	DCIP	250	100	12,430	710		13,240	1,130	4,100			5,230	1,230	16,530	710		18,470
Sub Main	DCIP	200	10,440				10,440	1,720				1,720	12,160				12,160
Sub Main	PE	200															
Sub Main	PE	150	990		17,440	23,390	41,820	1,820		9,670	6,130	17,620	2,810		27,110	29,520	59,440
Sub Total	-	-	11,530	12,440	18,150	23,400	65,520	4,680	4,100	9,680	6,130	24,590	16,210	16,540	27,830	29,530	90,110
Branch	PE	100			250		1,150					1,400		250		1,150	1,400
Branch	PE	80	72,150	29,140	79,550	91,310	272,150	16,570	17,840	32,640	21,000	88,050	88,720	46,980	112,190	112,310	360,200
Branch	PE	50															
Sub Total	-	-	72,150	29,390	79,550	92,460	273,550	16,570	17,840	32,640	21,000	88,050	88,720	47,230	112,190	113,460	361,600
Total	-	-	83,680	47,040	97,700	131,350	359,770	24,870	25,190	46,430	27,130	123,620	108,550	72,230	144,130	158,480	483,390



PROJECT: THE PREPARATORY STUDY ON THE SIEM REAP WATER SUPPLY EXPANSION PROJECT IN THE KINGDOM OF CAMBODIA

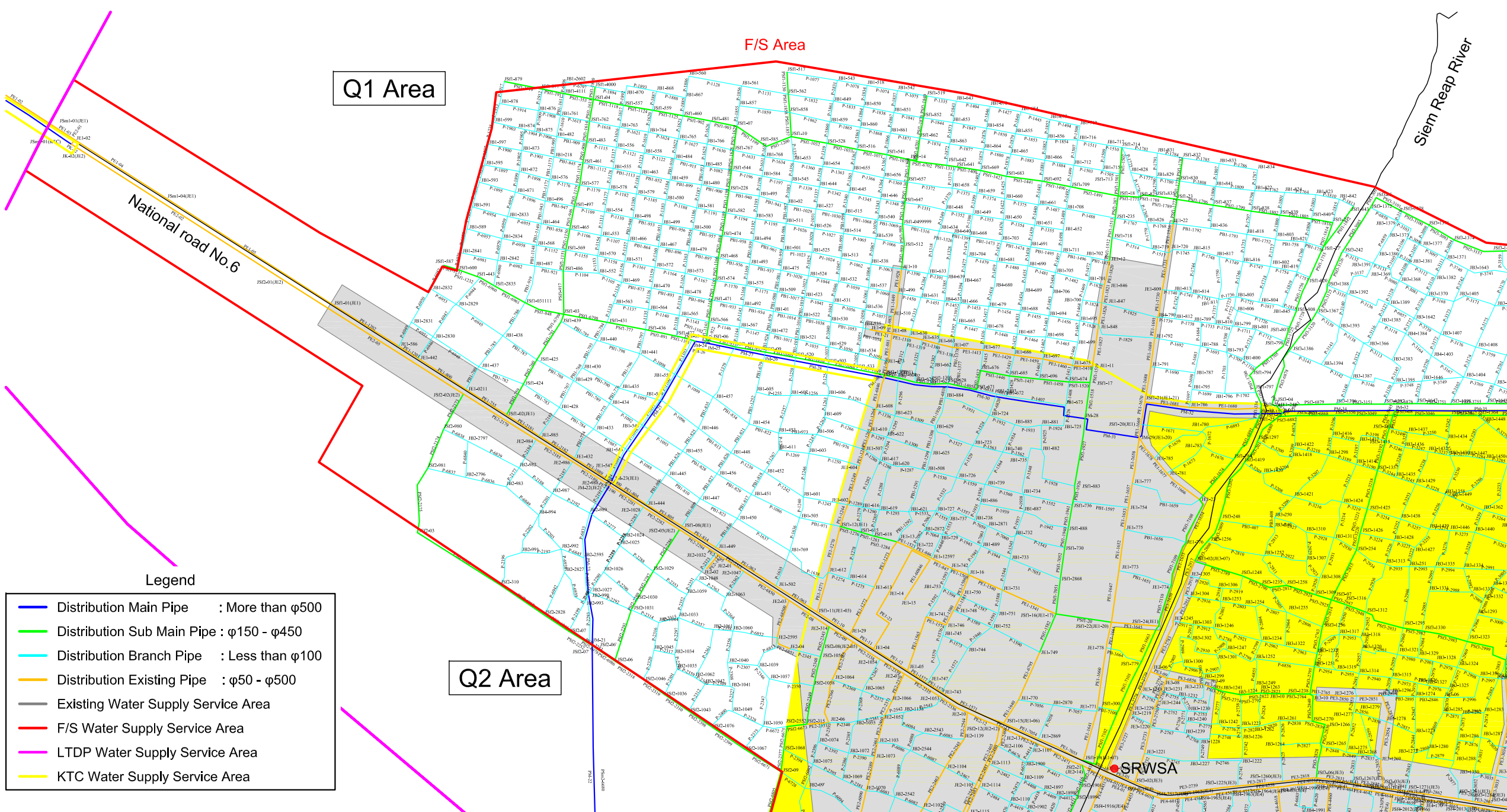
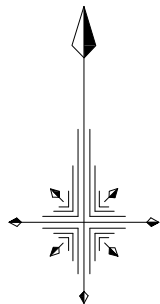
CLIENT:  
SIEM REAP WATER SUPPLY AUTHORITY  
JAPAN INTERNATIONAL COOPERATION AGENCY

CONSULTANTS :  
NJS CONSULTANTS CO., LTD. - JAPAN  
KOKUSAI KOGYO CO., LTD.-JAPAN





REV.	DESCRIPTION	DATE	SIGN.

TITLE: Distribution Network General Plan ( F/S )		
SCALE: Not To Scale	DATE: 27/02/2010	DRAWING NO.: SR-17-C-12

# Distribution Main Plan - Q1 Area

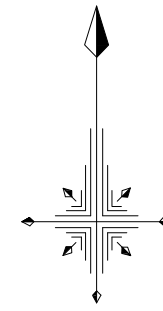


- Legend**
- Distribution Main Pipe : More than  $\phi 500$
  - Distribution Sub Main Pipe :  $\phi 150 - \phi 450$
  - Distribution Branch Pipe : Less than  $\phi 100$
  - Distribution Existing Pipe :  $\phi 50 - \phi 500$
  - Existing Water Supply Service Area
  - F/S Water Supply Service Area
  - LTDP Water Supply Service Area
  - KTC Water Supply Service Area

PROJECT: THE PREPARATORY STUDY ON THE SIEM REAP WATER SUPPLY EXPANSION PROJECT IN THE KINGDOM OF CAMBODIA											
<div>CLIENT:</div> <div> SIEM REAP WATER SUPPLY AUTHORITY</div> <div> JAPAN INTERNATIONAL COOPERATION AGENCY</div>		<div>CONSULTANTS :</div> <div> NJS CONSULTANTS CO., LTD. - JAPAN</div> <div> KOKUSAI KOGYO CO., LTD.-JAPAN</div>		REV.	DESCRIPTION	DATE	SIGN.	TITLE: Distribution Main Plan - Q1 Area			
								SCALE: Not To Scale	DATE: 27/02/2010	DRAWING NO.: SR-17-C-13	



# Distribution Main Plan - Q2 Area



SRWSA  
National road No.6

Q2 Area

Q4 Area

Q4 Area

## Legend

- Distribution Main Pipe : More than  $\phi 500$
- Distribution Sub Main Pipe :  $\phi 150 - \phi 450$
- Distribution Branch Pipe : Less than  $\phi 100$
- Distribution Existing Pipe :  $\phi 50 - \phi 500$
- Existing Water Supply Service Area
- F/S Water Supply Service Area
- LTDP Water Supply Service Area
- KTC Water Supply Service Area

Siem Reap River



PROJECT: THE PREPARATORY STUDY ON THE SIEM REAP WATER SUPPLY EXPANSION PROJECT IN THE KINGDOM OF CAMBODIA

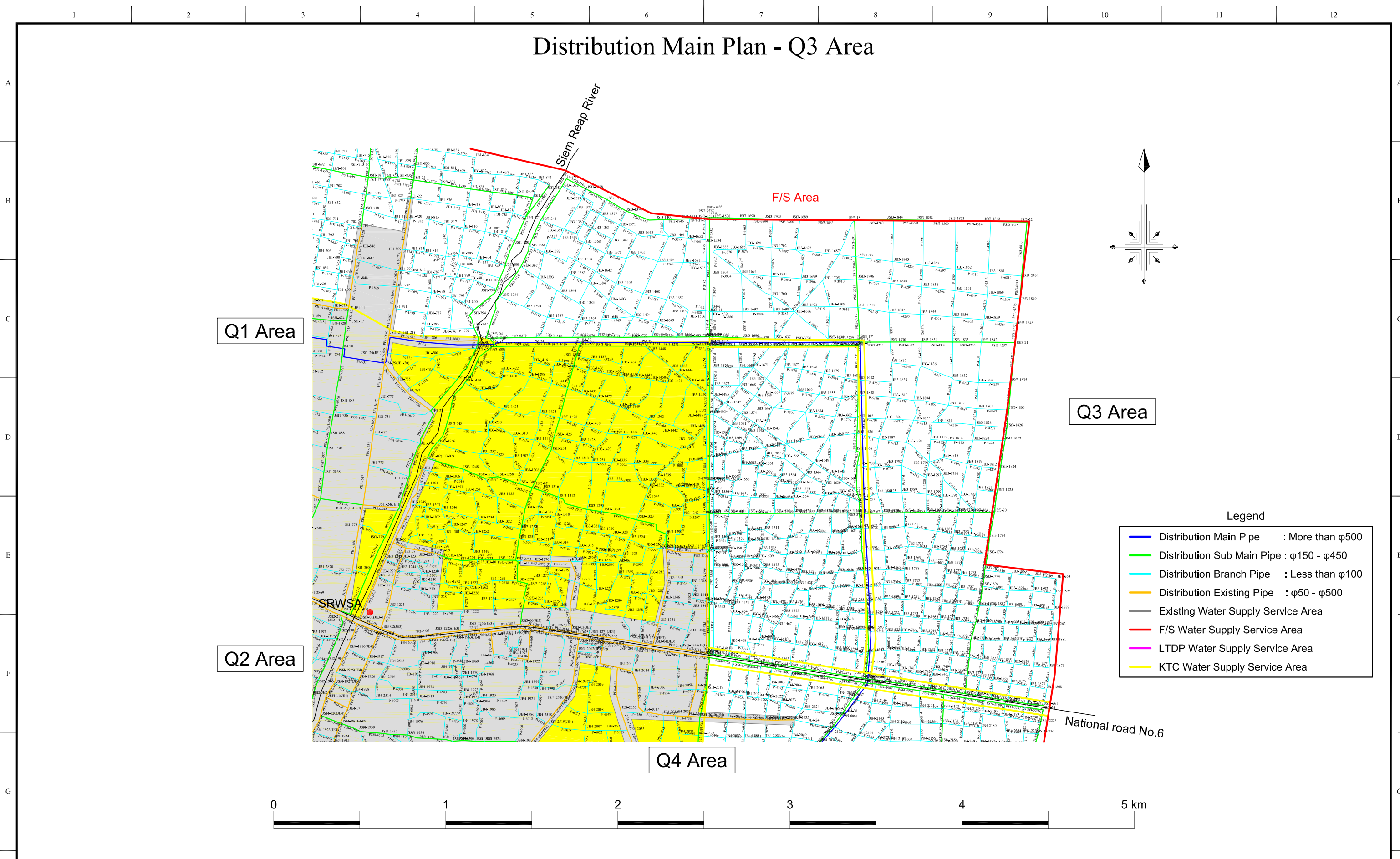
CLIENT:  
SIEM REAP WATER SUPPLY AUTHORITY  
JICA  
JAPAN INTERNATIONAL COOPERATION AGENCY

CONSULTANTS :  
NJS CONSULTANTS CO., LTD. - JAPAN  
KOKUSAI KOGYO CO., LTD.-JAPAN

REV.	DESCRIPTION	DATE	SIGN.





TITLE: Distribution Main Plan - Q2 Area		
SCALE: Not To Scale	DATE: 27/02/2010	DRAWING NO.: SR-17-C-14

Distribution Main Plan - Q3 Area



Legend

- Distribution Main Pipe : More than  $\phi 500$
- Distribution Sub Main Pipe :  $\phi 150 - \phi 450$
- Distribution Branch Pipe : Less than  $\phi 100$
- Distribution Existing Pipe :  $\phi 50 - \phi 500$
- Existing Water Supply Service Area
- F/S Water Supply Service Area
- LTDP Water Supply Service Area
- KTC Water Supply Service Area

PROJECT: THE PREPARATORY STUDY ON THE SIEM REAP WATER SUPPLY EXPANSION PROJECT IN THE KINGDOM OF CAMBODIA								
CLIENT:  SIEM REAP WATER SUPPLY AUTHORITY  JAPAN INTERNATIONAL COOPERATION AGENCY	CONSULTANTS :  NJS CONSULTANTS CO., LTD. - JAPAN  KOKUSAI KOGYO CO., LTD.-JAPAN			REV.	DESCRIPTION	DATE	SIGN.	TITLE: Distribution Main Plan - Q3 Area
								SCALE: Not To Scale
			DATE: 27/02/2010		DRAWING NO.: SR-17-C-15			