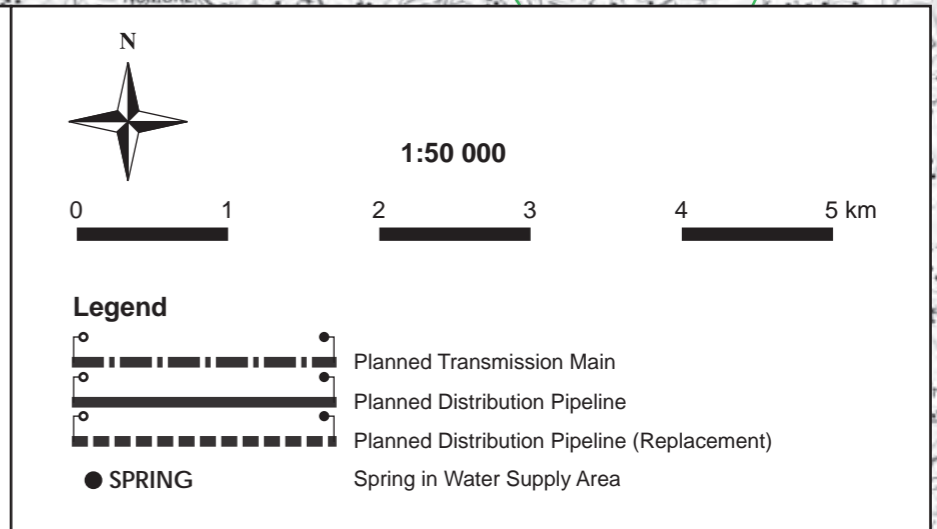
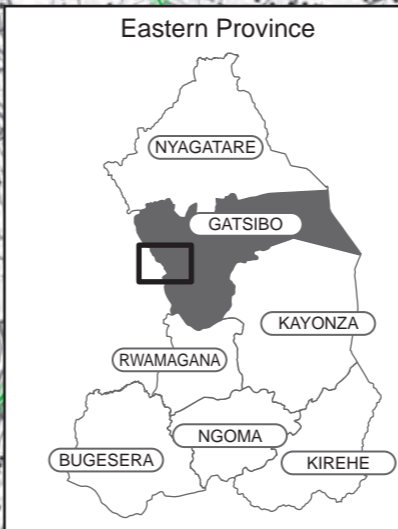


PLUMBING WORKS : DISTRIBUTION PIPELINE				
SECTION No.	MATERIAL	DN.[mm]	LENGTH[m]	BREAK PRESSURE TANK
1	PVC(PN10)	90	510	0
2	PVC(PN10)	90	544	1
3	PVC(PN10)	90	2 901	1
4	PVC(PN10)	90	3 450	0
5	PVC(PN10)	90	2 480	1
6	PVC(PN10)	90	690	0
7	PVC(PN10)	90	710	0

PUBLIC TAP STAND (4 taps)	28
VALVE BOX (GateValve, AirValve, Washout Valve)	23

WATER SOURCE INTAKE POINT
 - NYAKAGEZI Water Source
 - Collecting Weir : 3 nos
 - Receiving Tank : 100m³

DISTRIBUTION TANK : 200m³



2009.10

図3-16 優先プロジェクト計画概略図 : PP08 KAGEYO

PLUMBING WORKS : TRANSMISSION and DISTRIBUTION PIPELINE

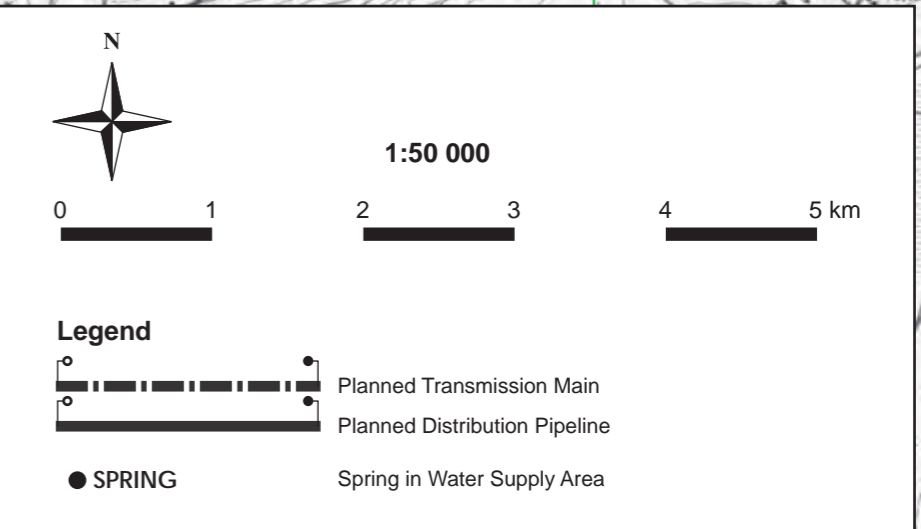
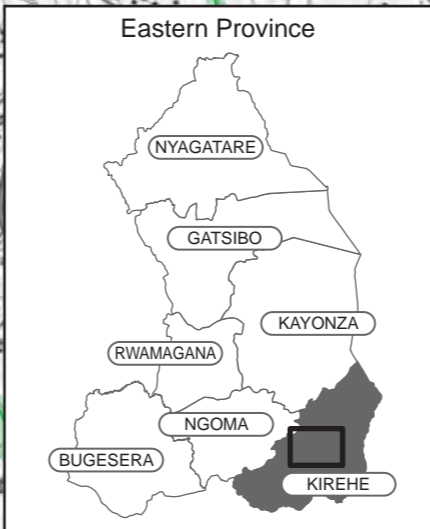
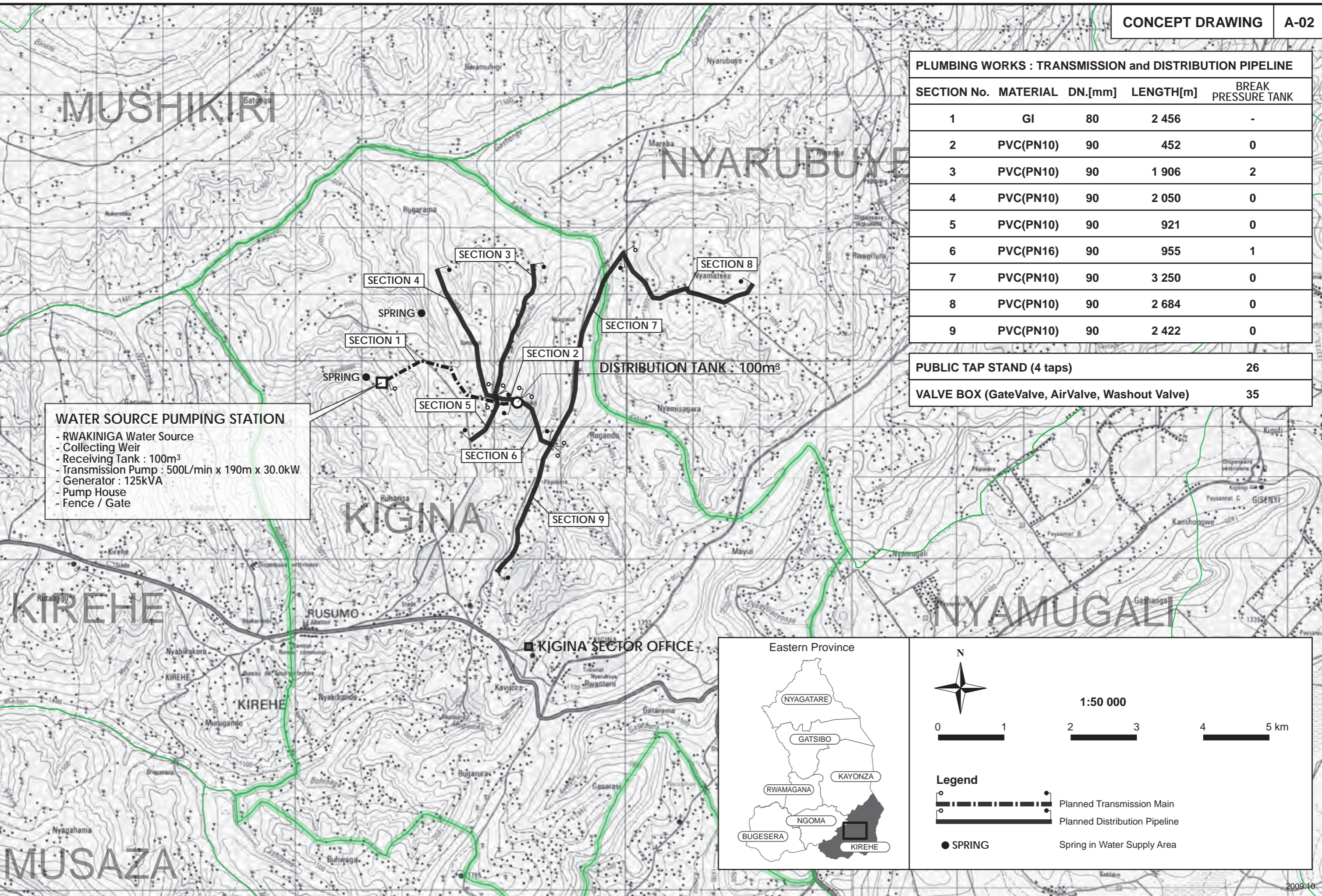
SECTION No.	MATERIAL	DN.[mm]	LENGTH[m]	BREAK PRESSURE TANK
1	GI	80	2 456	-
2	PVC(PN10)	90	452	0
3	PVC(PN10)	90	1 906	2
4	PVC(PN10)	90	2 050	0
5	PVC(PN10)	90	921	0
6	PVC(PN16)	90	955	1
7	PVC(PN10)	90	3 250	0
8	PVC(PN10)	90	2 684	0
9	PVC(PN10)	90	2 422	0

PUBLIC TAP STAND (4 taps) 26

VALVE BOX (Gate Valve, Air Valve, Washout Valve) 35

WATER SOURCE PUMPING STATION

- RWAKINIGA Water Source
- Collecting Weir
- Receiving Tank : 100m³
- Transmission Pump : 500L/min x 190m x 30.0kW
- Generator : 125kVA
- Pump House
- Fence / Gate



2009.10

3-23 図3-10 優先プロジェクト計画概略図 : PP02 KIGINA