



Legend

- Planned Pipe Line (New Installation)
- Planned Pipe Line (Replace existing pipe)
- Existing Pipe Line (Out of scope)
- Intake Facilities (Spring)
- Storage Tank (Receiving and/or Distribution)
- Pump Station
- Existing Facilities (Out of scope)
- Handpump (Borehole)

Piped Scheme (Rwamagana District)

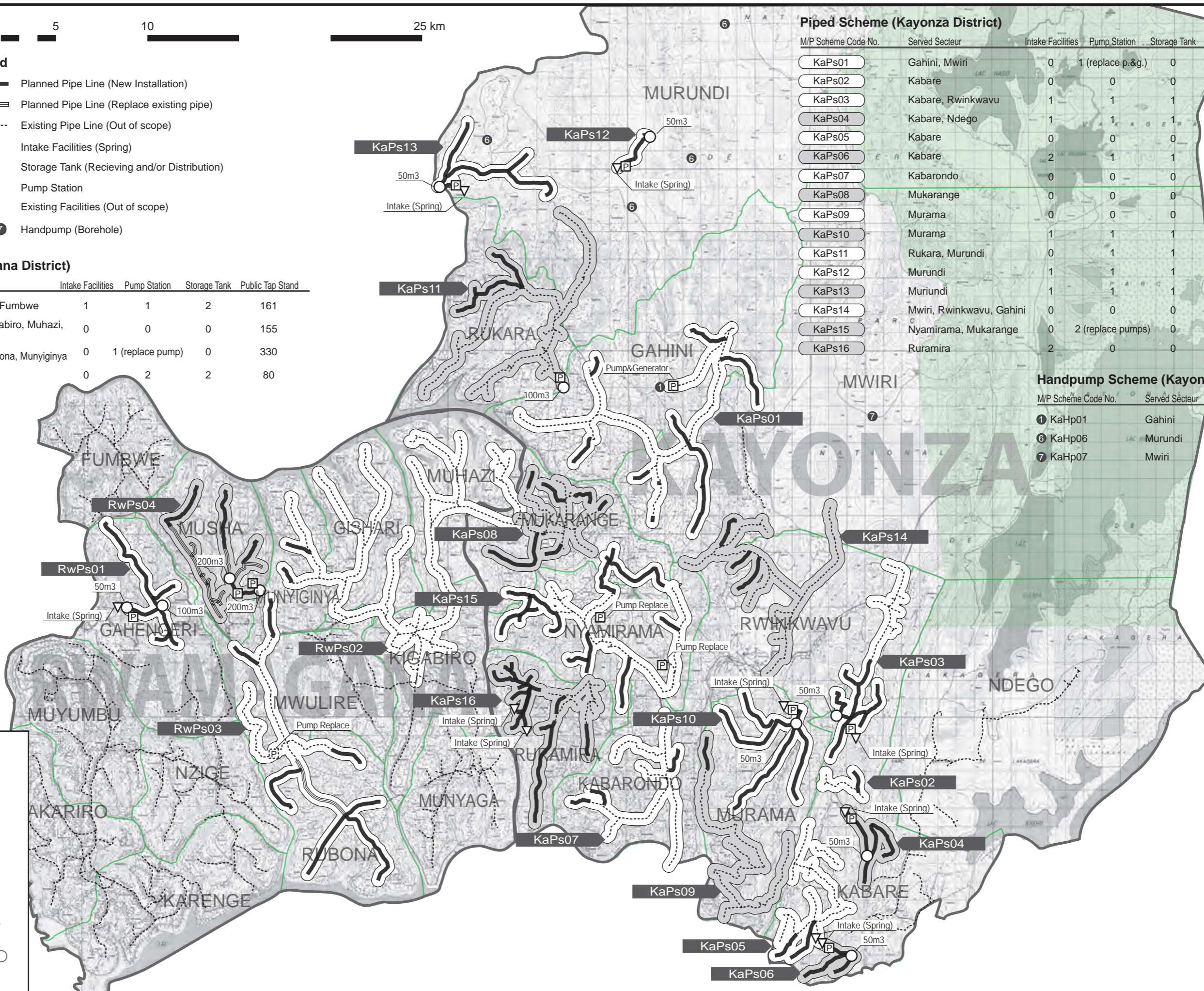
| M/P Scheme Code No. | Served Secteur | Intake Facilities | Pump Station | Storage Tank | Public Tap Stand |
|---------------------|---------------------------------------|-------------------|------------------|--------------|------------------|
| RwPs01 | Gahengeri, Fumbwe | 1 | 1 | 2 | 161 |
| RwPs02 | Gishari, Kigabiro, Muhazi, Munyiginya | 0 | 0 | 0 | 155 |
| RwPs03 | Mwulire, Rubona, Munyiginya | 0 | 1 (replace pump) | 0 | 330 |
| RwPs04 | Musha | 0 | 2 | 2 | 80 |

Piped Scheme (Kayonza District)

| M/P Scheme Code No. | Served Secteur | Intake Facilities | Pump Station | Storage Tank | Public Tap Stand |
|---------------------|--------------------------|-------------------|-------------------|--------------|------------------|
| KaPs01 | Gahini, Mwiri | 0 | 1 (replace p.&g.) | 0 | 87 |
| KaPs02 | Kabare | 0 | 0 | 0 | 6 |
| KaPs03 | Kabare, Rwinkwavu | 1 | 1 | 1 | 57 |
| KaPs04 | Kabare, Ndego | 1 | 1 | 1 | 40 |
| KaPs05 | Kabare | 0 | 0 | 0 | 17 |
| KaPs06 | Kabare | 2 | 1 | 1 | 16 |
| KaPs07 | Kabarondo | 0 | 0 | 0 | 69 |
| KaPs08 | Mukarange | 0 | 0 | 0 | 98 |
| KaPs09 | Murama | 0 | 0 | 0 | 55 |
| KaPs10 | Murama | 1 | 1 | 1 | 28 |
| KaPs11 | Rukara, Murundi | 0 | 1 | 1 | 119 |
| KaPs12 | Murundi | 1 | 1 | 1 | 2 |
| KaPs13 | Muriundi | 1 | 1 | 1 | 70 |
| KaPs14 | Mwiri, Rwinkwavu, Gahini | 0 | 0 | 0 | 83 |
| KaPs15 | Nyamirama, Mukarange | 0 | 2 (replace pumps) | 0 | 122 |
| KaPs16 | Ruramira | 2 | 0 | 0 | 69 |

Handpump Scheme (Kayonza District)

| M/P Scheme Code No. | Served Secteur | Replace |
|---------------------|----------------|---------|
| ① KaHp01 | Gahini | 1 |
| ⑥ KaHp06 | Murundi | 4 |
| ⑦ KaHp07 | Mwiri | 1 |



2009.7



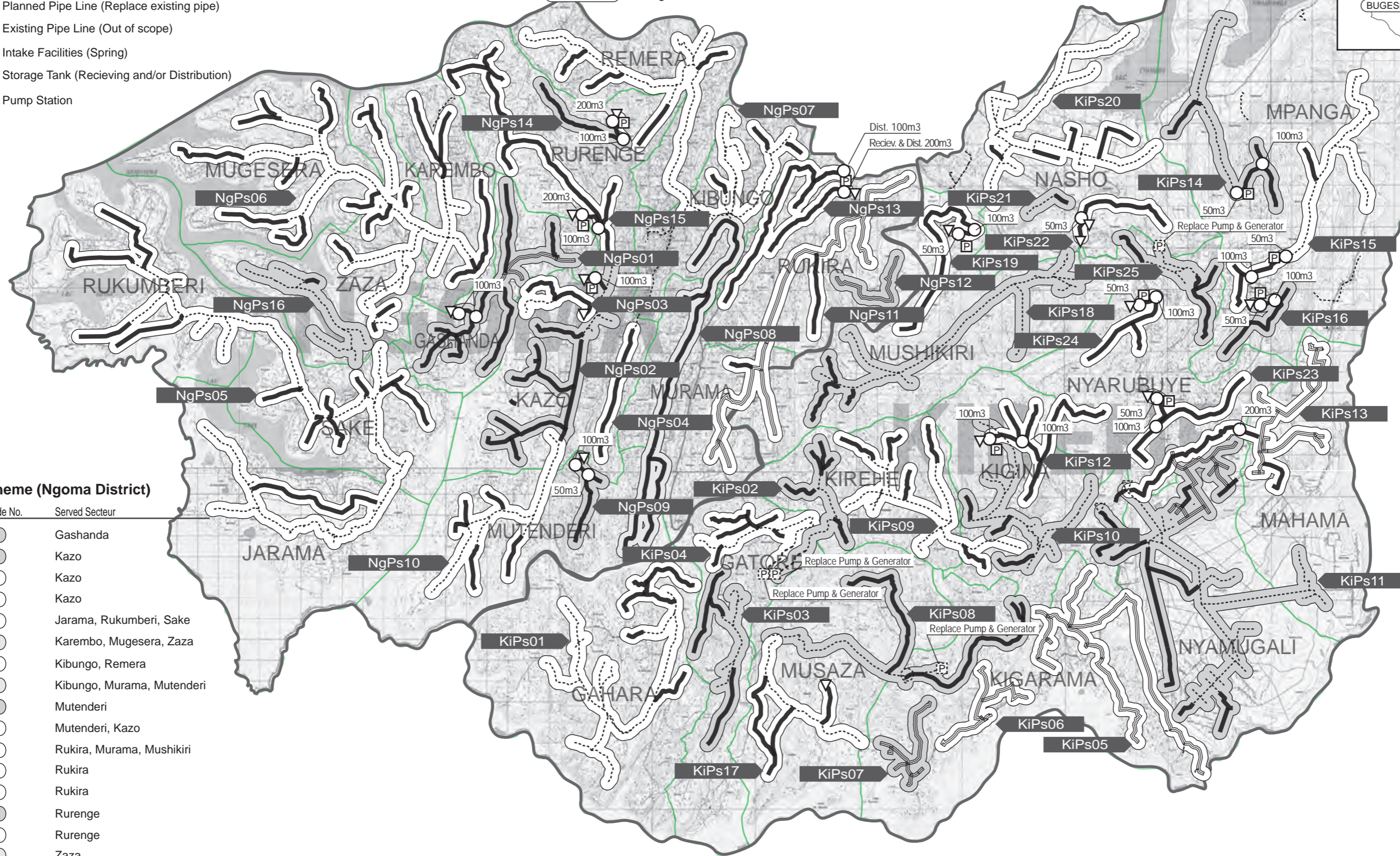
Legend

- Planned Pipe Line (New Installation)
- Planned Pipe Line (Replace existing pipe)
- Existing Pipe Line (Out of scope)
- Intake Facilities (Spring)
- Storage Tank (Receiving and/or Distribution)
- Pump Station

Piped Scheme (Kirehe District)

| M/P Scheme Code No. | Served Secteur | M/P Scheme Code No. | Served Secteur | M/P Scheme Code No. | Served Secteur |
|---------------------|------------------|---------------------|---------------------------|---------------------|----------------|
| KiPs01 | Gahara | KiPs10 | Kigina | KiPs18 | Mushikiri |
| KiPs02 | Kirehe, Gatore | KiPs11 | Kigina, Nyamugari, Mahama | KiPs19 | Mushikiri |
| KiPs03 | Gatore | KiPs12 | Kigina, Nyarubuye | KiPs20 | Nasho |
| KiPs04 | Gatore | KiPs13 | Kigina, Mahama | KiPs21 | Nasho |
| KiPs05 | Kigarama | KiPs14 | Mpanga | KiPs22 | Nasho |
| KiPs06 | Kigarama | KiPs15 | Mpanga | KiPs23 | Nyarubuye |
| KiPs07 | Kigarama | KiPs16 | Mpanga | KiPs24 | Nyarubuye |
| KiPs08 | Kigarama, Musaza | KiPs17 | Musaza | KiPs25 | Nyarubuye |
| KiPs09 | Kigina, Kirehe | | | | |

Eastern Province



Piped Scheme (Ngoma District)

| M/P Scheme Code No. | Served Secteur |
|---------------------|----------------------------|
| NgPs01 | Gashanda |
| NgPs02 | Kazo |
| NgPs03 | Kazo |
| NgPs04 | Kazo |
| NgPs05 | Jarama, Rukumberi, Sake |
| NgPs06 | Karemba, Mugesera, Zaza |
| NgPs07 | Kibungo, Remera |
| NgPs08 | Kibungo, Murama, Mutenderi |
| NgPs09 | Mutenderi |
| NgPs10 | Mutenderi, Kazo |
| NgPs11 | Rukira, Murama, Mushikiri |
| NgPs12 | Rukira |
| NgPs13 | Rukira |
| NgPs14 | Rurenge |
| NgPs15 | Rurenge |
| NgPs16 | Zaza |

2009.7

図3-7 計画給水スキーム配置図：ソゴス、キレヘ郡

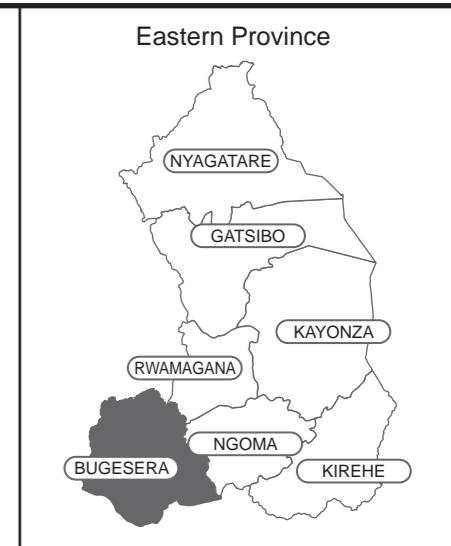
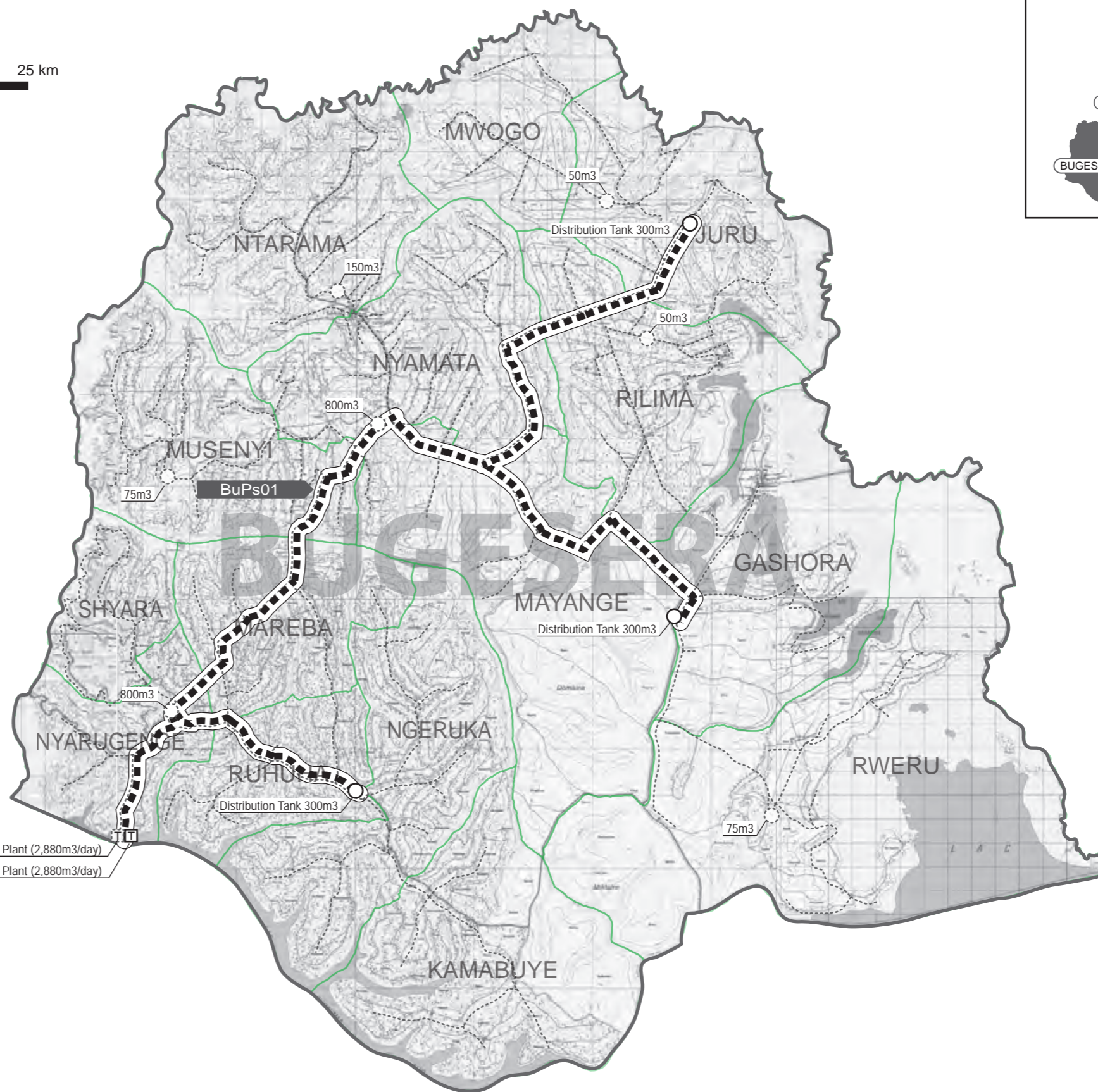


Legend

- ■ ■ ■ ■ Planned Transmission Main (New Installation)
- Existing Pipe Line (Out of scope)
- Distribution Tank : 300m³
- Water Treatment Plant
- Existing Tank (Out of scope)
- Existing Treatment Plant (Out of scope)

Piped Scheme

| M/P Scheme Code No. | Treatment plant | Transmission main | Distribution Tank | Public Tap Stand |
|---------------------|--------------------------|-------------------|-----------------------|------------------|
| BuPs01 | 2,880m ³ /day | 66.7 km | 300m ³ x 3 | 718 |



3-11

図3-8 計画給水スキーム配置図：ブゲセラ郡

Des 3. Carte abrégée du site prévu pour le projet prioritaire

- 3-1 PP01 Mushikiri
- 3-2 PP02 Rukira
- 3-3 PP03 Gashanda
- 3-4 PP04 Mukarange
- 3-5 PP05 Kageyo
- 3-6 PP06 Kigina
- 3-7 PP07 Katabagemu
- 3-8 PP08 Rwimbogo
- 3-9 PP09 Remera
- 3-10 PP10 Mahama

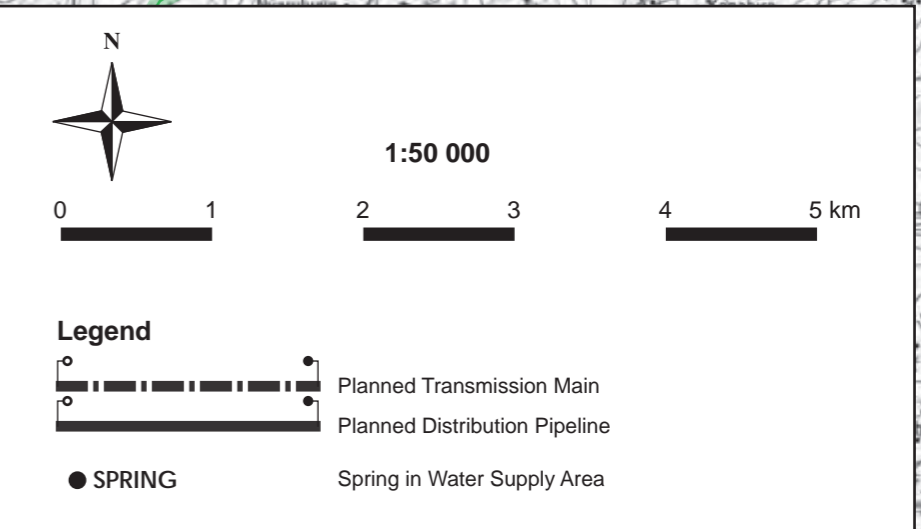
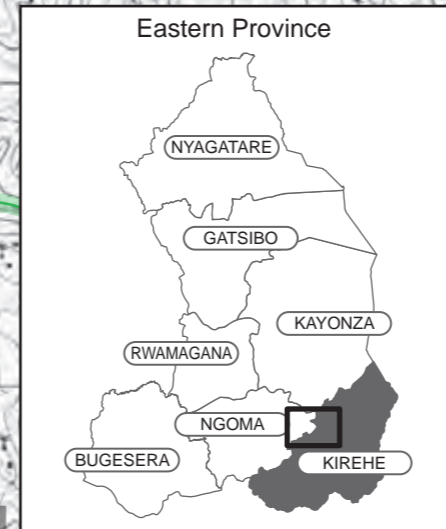
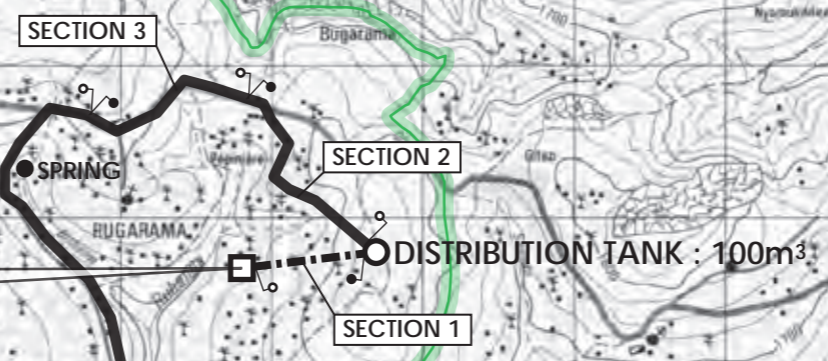
PLUMBING WORKS : TRANSMISSION and DISTRIBUTION PIPELINE

| SECTION No. | MATERIAL | DN.[mm] | LENGTH[m] | BREAK PRESSURE TANK |
|-------------|-----------|---------|-----------|---------------------|
| 1 | GI | 80 | 1 057 | - |
| 2 | PVC(PN10) | 90 | 1 443 | 1 |
| 3 | PVC(PN10) | 90 | 912 | 0 |
| 4 | PVC(PN10) | 90 | 7 255 | 2 |

| | |
|--|----|
| PUBLIC TAP STAND (4 taps) | 25 |
| VALVE BOX (Gate Valve, Air Valve, Washout Valve) | 19 |

WATER SOURCE PUMPING STATION

- CYANTABARA Water Source
- Collecting Weir
- Receiving Tank : 50m³
- Transmission Pump : 600L/min x 150m x 30.0kW
- Generator : 125 kVA
- Pump House
- Fence / Gate



3-22 図3-9 優先プロジェクト計画概略図 : PP01 MUSHIKIRI