

M I N I N F R A
PROVINCE DE L'EST

REPUBLIQUE DU RWANDA

ETUDE POUR
AMELIORATION DE L'ALIMENTATION EN EAU
EN MILIEU RURAL
DANS
LA PROVINCE DE L'EST
EN
REPUBLIQUE DU RWANDA

RAPPORT FINAL
RECUEIL DE DESSINS

NOVEMBRE 2010

AGENCE JAPONAISE DE COOPERATION INTERNATIONALE

JAPAN TECHNO CO., LTD.
NIPPON KOEI CO., LTD.

GED
JR
11-023

Table des Matières

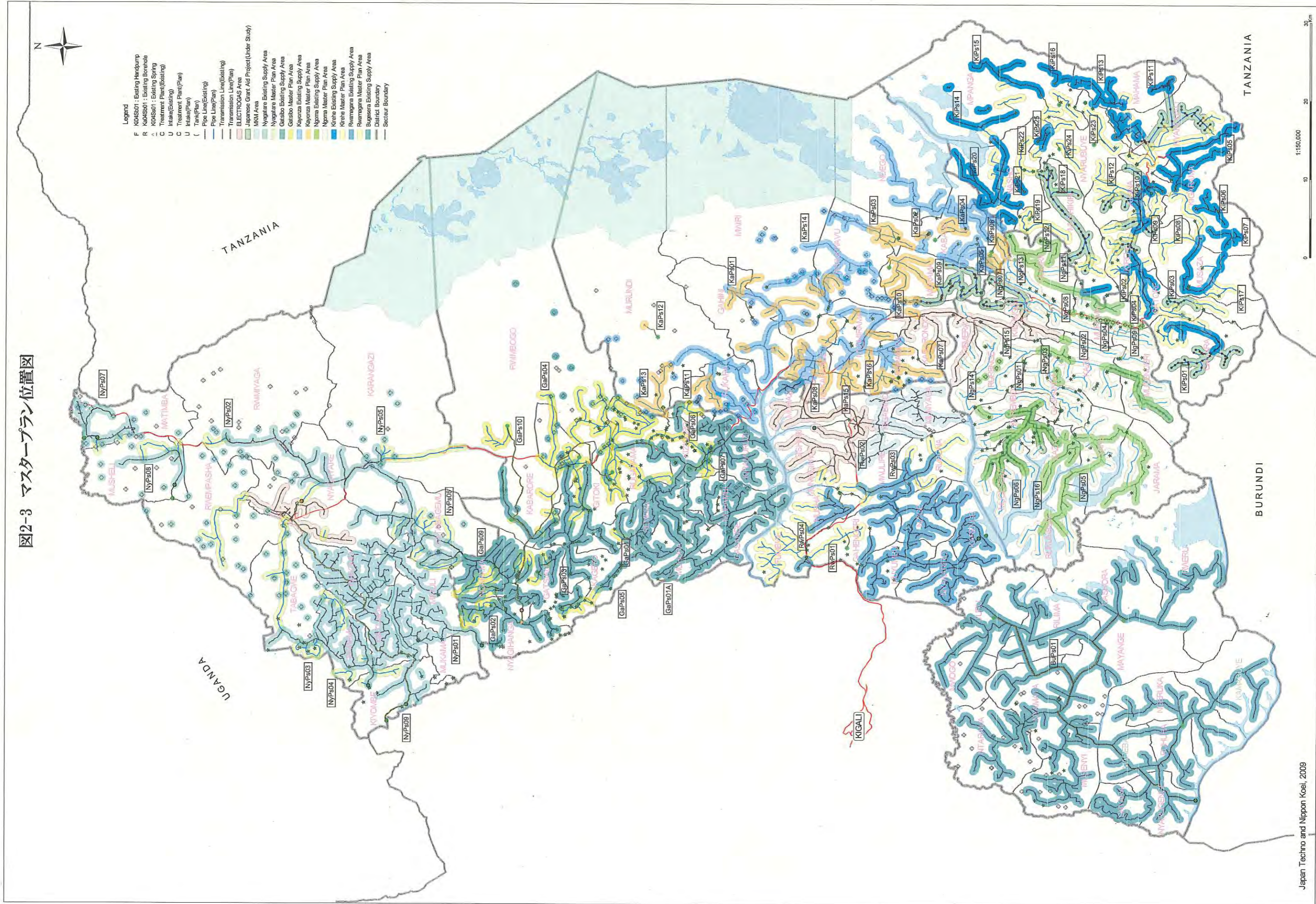
- Des 1. Carte de localisation du Plan Directeur

- Des 2. Carte de disposition prévue des systèmes d'eau dans le cadre du Plan Directeur
 - 2-1 District du Nyagatare
 - 2-2 District du Gatsibo
 - 2-3 District du Kayonza et du Rwamagana
 - 2-4 District du Ngoma et du Kirehe
 - 2-5 District du Bugesera

- Des 3. Carte abrégée du site prévu pour le projet prioritaire
 - 3-1 PP01 Mushikiri
 - 3-2 PP02 Rukira
 - 3-3 PP03 Gashanda
 - 3-4 PP04 Mukarange
 - 3-5 PP05 Kageyo
 - 3-6 PP06 Kigina
 - 3-7 PP07 Katabagemu
 - 3-8 PP08 Rwimbogo
 - 3-9 PP09 Remera
 - 3-10 PP10 Mahama

- Des 4. Plan d'ouvrage (Référence)
 - 4-1 Ouvrage de captage de source
 - 4-2 Réservoir d'eau
 - 4-3 Brise charge
 - 4-4 Borne fontaine

図2-3 マスタープラン位置図



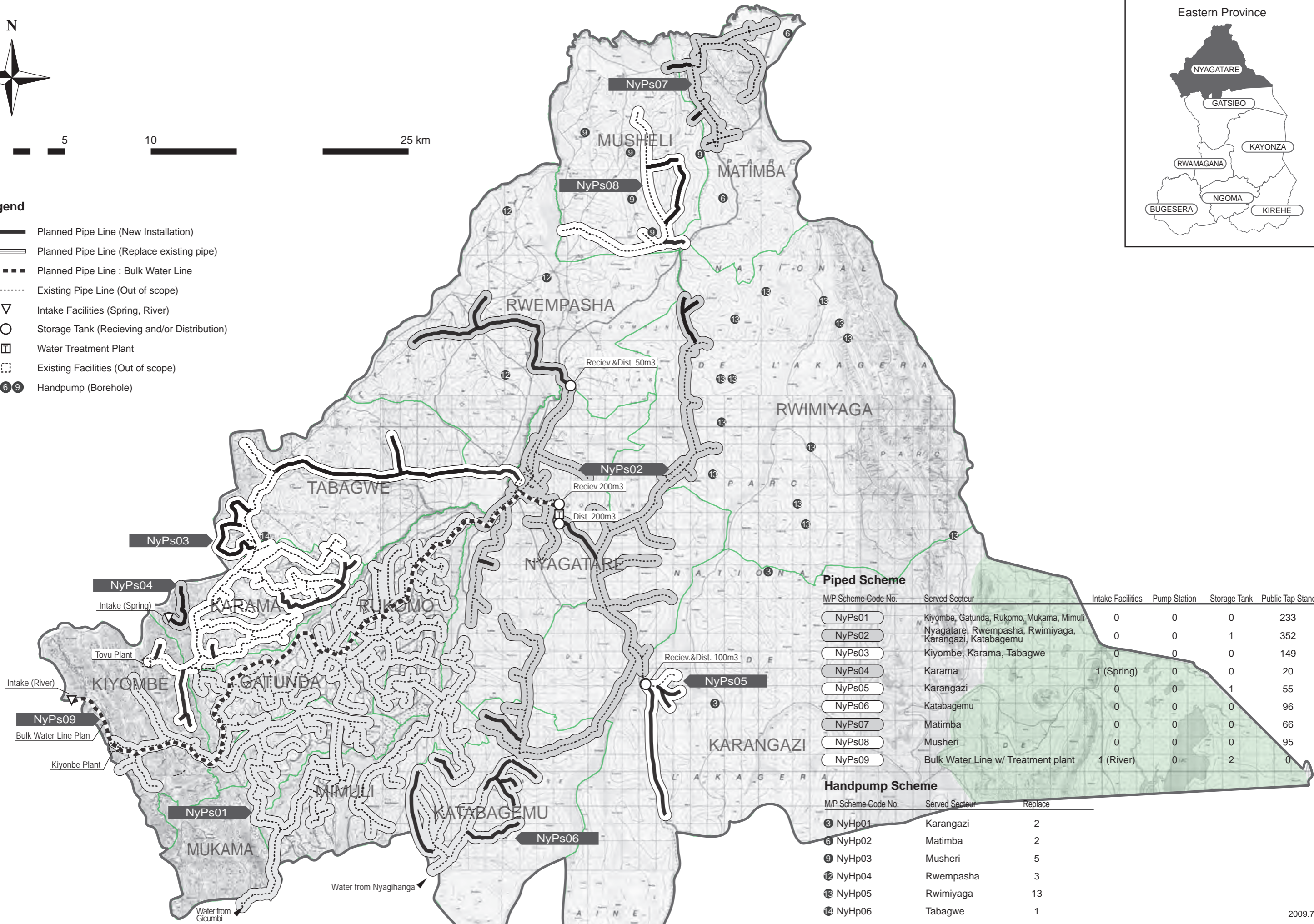
Des 2. Carte de disposition prévue des systèmes d'eau dans le cadre du Plan Directeur

- 2-1 District du Nyagatare
- 2-2 District du Gatsibo
- 2-3 District du Kayonza et du Rwamagana
- 2-4 District du Ngoma et du Kirehe
- 2-5 District du Bugesera



Legend

- Planned Pipe Line (New Installation)
- Planned Pipe Line (Replace existing pipe)
- Planned Pipe Line : Bulk Water Line
- Existing Pipe Line (Out of scope)
- Intake Facilities (Spring, River)
- Storage Tank (Receiving and/or Distribution)
- Water Treatment Plant
- Existing Facilities (Out of scope)
- 3 6 9 Handpump (Borehole)



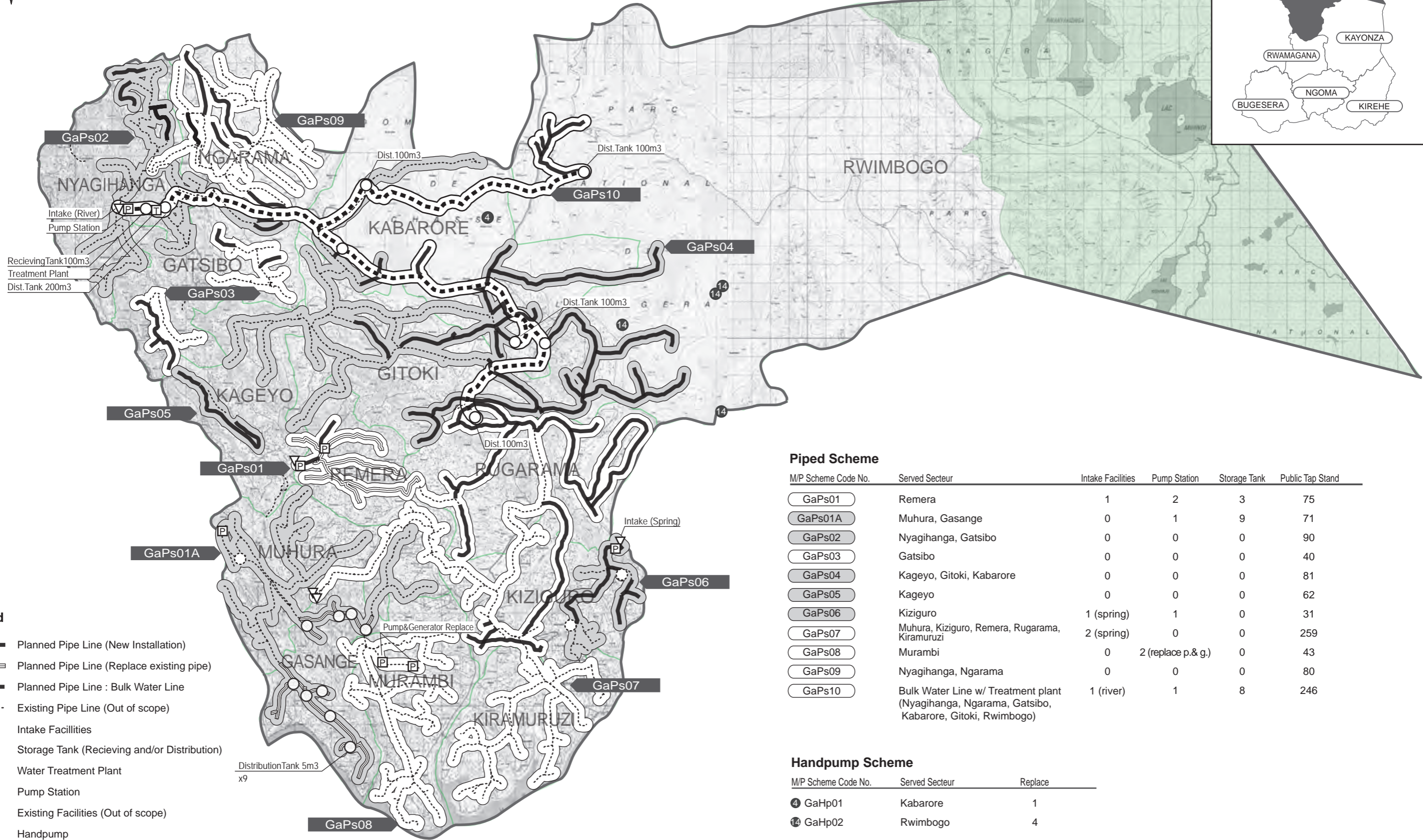
Piped Scheme

M/P Scheme Code No.	Served Sector	Intake Facilities	Pump Station	Storage Tank	Public Tap Stand
NyPs01	Kiyombe, Gatunda, Rukomo, Mukama, Mimuli	0	0	0	233
NyPs02	Nyagatare, Rwempasha, Rwimiyaga, Karangazi, Katabagemu	0	0	1	352
NyPs03	Kiyombe, Karama, Tabagwe	0	0	0	149
NyPs04	Karama	1 (Spring)	0	0	20
NyPs05	Karangazi	0	0	1	55
NyPs06	Katabagemu	0	0	0	96
NyPs07	Matimba	0	0	0	66
NyPs08	Musheri	0	0	0	95
NyPs09	Bulk Water Line w/ Treatment plant	1 (River)	0	2	0

Handpump Scheme

M/P Scheme Code No.	Served Sector	Replace
3 NyHp01	Karangazi	2
6 NyHp02	Matimba	2
9 NyHp03	Musheri	5
12 NyHp04	Rwempasha	3
13 NyHp05	Rwimiyaga	13
14 NyHp06	Tabagwe	1

2009.7



Legend

- Planned Pipe Line (New Installation)
- Planned Pipe Line (Replace existing pipe)
- Planned Pipe Line : Bulk Water Line
- Existing Pipe Line (Out of scope)
- Intake Facilities
- Storage Tank (Receiving and/or Distribution)
- Water Treatment Plant
- Pump Station
- Existing Facilities (Out of scope)
- Handpump

Piped Scheme

M/P Scheme Code No.	Served Secteur	Intake Facilities	Pump Station	Storage Tank	Public Tap Stand
GaPs01	Remera	1	2	3	75
GaPs01A	Muhura, Gasange	0	1	9	71
GaPs02	Nyagihanga, Gatsibo	0	0	0	90
GaPs03	Gatsibo	0	0	0	40
GaPs04	Kageyo, Gitoki, Kabarore	0	0	0	81
GaPs05	Kageyo	0	0	0	62
GaPs06	Kiziguro	1 (spring)	1	0	31
GaPs07	Muhura, Kiziguro, Remera, Rugarama, Kiramuruzi	2 (spring)	0	0	259
GaPs08	Murambi	0	2 (replace p.&g.)	0	43
GaPs09	Nyagihanga, Ngarama	0	0	0	80
GaPs10	Bulk Water Line w/ Treatment plant (Nyagihanga, Ngarama, Gatsibo, Kabarore, Gitoki, Rwimbogo)	1 (river)	1	8	246

Handpump Scheme

M/P Scheme Code No.	Served Secteur	Replace
④ GaHp01	Kabarore	1
⑭ GaHp02	Rwimbogo	4