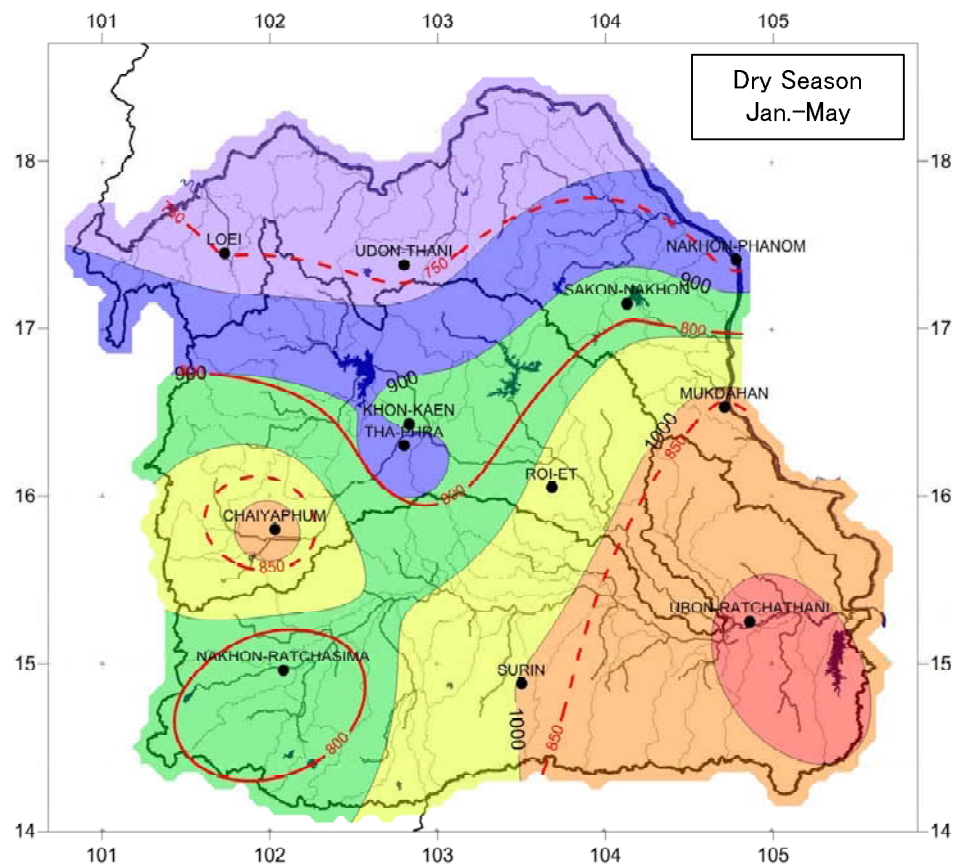


Crop (Rice) Water Requirement in Wet Season



Crop (Rice) Water Requirement in Dry Season

Summary of ET0 and crop water requirement

Station	ET0 Year Avg. (mm/day)	ET0 Year Total (mm/year)	Wet Season (mm/Jun-Nov)				Dry Season (mm/Dec-May)			
			ET0	Etc	Eff rain	CWR	ET0	Etc	Eff rain	CWR
UDON-THANI	4.0	1,442	744	607	704	306	698	665	194	822
UBON-RATCHATHANI	4.6	1,678	889	674	732	313	789	790	178	1,059
THA-PHRA	4.1	1,483	770	614	583	377	713	679	179	844
SURIN	4.4	1,606	838	668	670	349	768	744	169	1,003
SAKON-NAKHON	4.2	1,519	795	618	718	309	725	711	210	931
ROI-ET	4.4	1,591	822	668	692	341	769	724	188	964
NAKHON-RATCHASIMA	4.1	1,508	767	653	547	521	741	677	176	901
CHAIYAPHUM	4.6	1,674	884	635	716	311	790	769	177	1,020
MUKDAHAN	4.4	1,615	854	619	629	353	761	683	205	829
LOEI	4.0	1,447	749	648	643	361	698	691	166	924
KHON-KAEN	4.2	1,530	785	571	796	301	745	653	220	863
NAKHON-PHANOM	3.9	1,422	741	684	582	503	680	794	190	1,031

NOTE: ET0: Potential evapotranspiration is calculated by CROPWAT with FAO CLIMAT's data.  
 WET: Wet Season from Jun. to Oct.  
 DRY: Dry Season from Jan. to May.  
 Etc: Evapotranspiration under standard conditions.  
 Eff rain: Effective rainfall.  
 CWR: Crop water requirement.

5-2 Crop Water Requirement in Wet and Dry Season

Note: Data Source: Processed by JICA study Team using TMD observation data and FAO CLIMAT database

Date: September 2010

LEGEND

Crop (Rice) Water Requirement in Wet Season

- CWR < 300 mm
- 300-350 mm
- 350-400 mm
- 400-450 mm
- 450-500 mm

ET0 in Wet Season (mm)

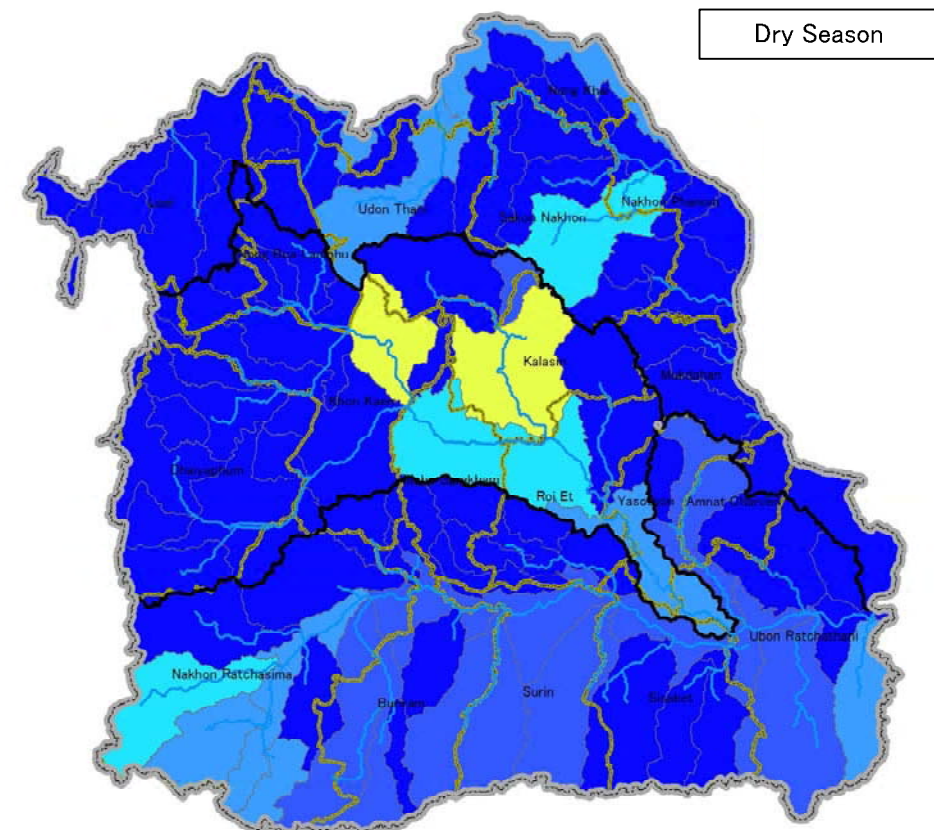
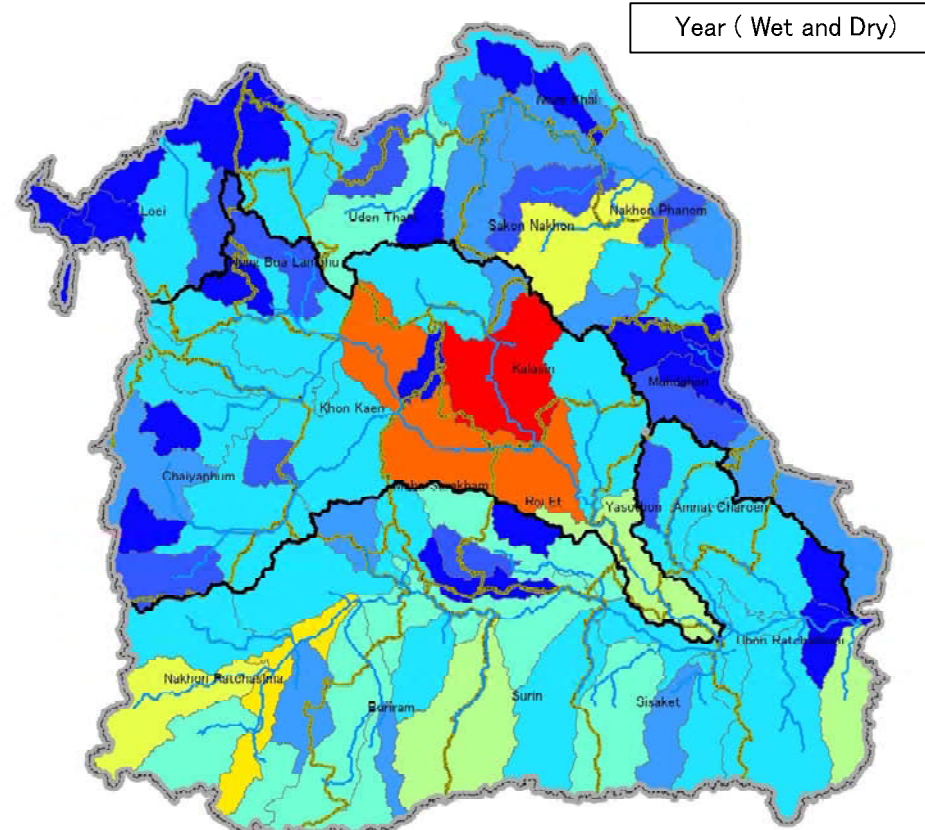
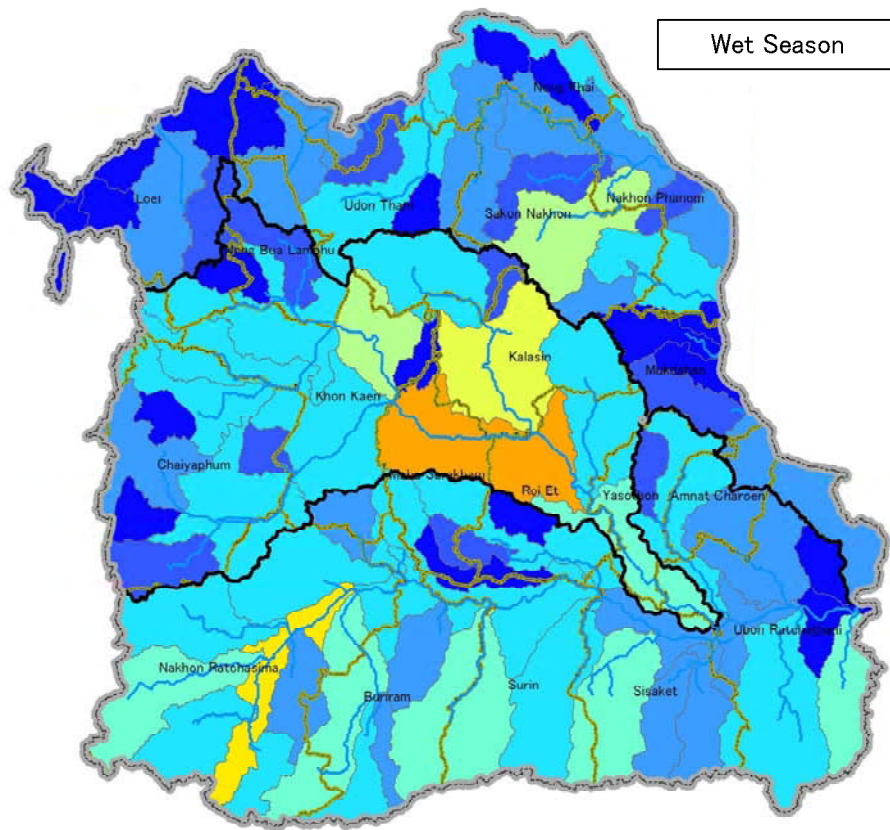
Crop (Rice) Water Requirement in Dry Season

- CWR < 850 mm
- 850-900 mm
- 900-950 mm
- 950-1000 mm
- 1000-1000 mm

ET0 in Dry Season (mm)







Agricultural Water Demand for Sub-basins

Subbasin Name	Code	W. Reqr. (MCM) -Year-	W. Reqr. (MCM) -Wet-	W. Reqr. (MCM) -Dry-	Subbasin Name	Code	W. Reqr. (MCM) -Year-	W. Reqr. (MCM) -Wet-	W. Reqr. (MCM) -Dry-
Khong part 3	0210	1	1	0	Upper Lampao	0417	133	108	25
Nam Mhun	0211	0	0	0	Lam Phanchard	0418	62	35	28
Nam Sarn	0212	3	3	0	Lower Lampao	0419	922	460	462
Khong part 4	0213	16	15	1	Lam Namyoung	0420	171	151	20
Huai Nampuan	0214	48	47	1	Lower Chi	0421	334	263	71
Lower Loei	0215	102	91	11	LOWER CHI		1,622	1,017	605
Khong part 5	0216	18	18	0	CHI (TOTAL)		4,074	2,890	1,184
Huai Namsoem	0217	18	17	1	Upper Mun	0502	592	533	58
Nam Moeng	0218	111	91	21	Lam Sae	0503	211	149	62
Khong part 6	0219	160	87	73	Lam Phra Ploeng	0504	277	198	79
Nam Suai	0220	49	45	5	Lam Takong	0505	411	291	120
Huai Luang	0221	209	156	53	Lam Choeng Krai	0506	147	145	2
Huai Darn	0222	5	5	0	Lam Chakkaraj	0507	84	79	5
Khong part 7	0223	179	125	54	Lam Nang Rong	0508	218	192	25
UPPER KHONG		920	701	219	Lam Pa Tear	0509	69	52	17
Upper Songkhram	0224	63	59	4	Lam Plai Maas	0510	297	251	46
Lower Songkhram	0225	72	66	7	Mun part 2	0511	204	168	36
Huai Khong	0226	12	12	0	Huai Aek	0512	65	65	1
Huai Hii	0227	8	8	0	Lam Sathaed	0513	128	126	2
Huai Namyarm	0228	45	41	3	Lam Phang Chu	0514	115	108	7
Huai Nam Oon	0229	478	325	153	UPPER MUN		2,817	2,357	460
Huai Thuay	0230	46	42	5	Huai Ta Khong	0515	104	91	13
Khong part 8	0231	56	50	6	Lam Chi	0516	306	260	46
Nam Phung	0232	71	65	6	Lam Phub Phlao	0517	22	22	0
Huai Nam Kham	0233	156	140	16	Lam Tao	0518	27	26	1
Khong part 9	0234	14	13	1	Lam Siew Noi	0519	18	15	4
Huai Bangsai	0235	22	20	2	Lam Siew Yai	0520	208	189	19
Huai Muk	0236	17	15	2	Huai Thab Thun	0521	181	152	29
Huai Bang Ei	0237	40	34	5	Mun part 3	0522	115	88	27
Lower Khong	0238	59	52	6	Huai Samran	0523	271	249	22
LOWER KHONG		1,159	944	215	Huai Tha	0524	69	67	2
KHONG (TOTAL)		2,079	1,645	434	Huaia Khayung	0525	115	91	24
Upper Chi	0402	52	52	0	MIDDLE MUN		1,437	1,249	188
Lam Saphung	0403	7	7	0	Huai Phoeng	0526	28	28	0
Lam Krajuan	0404	7	7	0	Lam Sebai	0527	187	154	33
Lam Khanchoo	0405	45	43	3	Lam Sebok	0528	108	91	17
Chi part 2	0406	196	193	3	Lam Dom Yai	0529	162	137	25
Huai Sammo	0407	28	28	0	Lower Mun	0530	5	4	1
Chi part 3	0408	134	131	2	Huai Tung Lung	0531	4	4	0
UPPER CHI		469	461	8	Lam Dom Noi	0532	305	222	83
Upper Phong	0409	105	102	2	LOWER MUN		798	639	159
Huai Phuyai	0410	7	7	0	MUN (TOTAL)		5,052	4,244	808
Lam Phanieng	0411	34	32	1	KHONG/CHI/MUN (TOTAL)		11,205	8,780	2,426
Nam Phrom	0412	144	126	18					
Lam Namchern	0413	135	123	12					
Lower Phong	0414	769	342	427					
Huai Saibarth	0415	17	17	0					
Chi part 4	0416	773	663	111					
MIDDLE CHI		1,983	1,412	571					

### 5-3 Agriculture Water Demand for Sub-basins

**Note:**  
Data Source: Processed by JICA study Team using TMD observation data and FAO CLIMAT database

**Date:** September 2010

#### LEGEND

