

No.	Conservation Forest Name	Area_rai
0	Phu Pha Man National Park	222,363
1	Pha Phung Wildlife Sanctuary	117,975
2	Yod-dome Wildlife Sanctuary	143,881
3	Phu-khieo Wildlife Sanctuary	982,163
4	Tat Ton National Park	138,794
5	Tat Mok National Park	27,050
6	Ta Phraya National Park	247,369
7	Pang Sida National Park	944
8	Nam Phong National Park	141,656
9	Phu-si-tan Wildlife Sanctuary	158,738
10	Hui Sala Wildlife Sanctuary	235,400
11	Phukao-Phu Phan Kham National Park	194,281
12	Sai Thong National Park	208,550
13	Phu Phan National Park	442,888
14	Phanom-dong-rak Wildlife Sanctuary	207,831
15	Phu Pha Dang Wildlife Sanctuary	13
16	Khao Yai National Park	228,850
17	Phu Wiang National Park	197,519
18	Huai Taboh Huaiyai Wildlife Sanctuary	197,419
19	Kaeng Tana National Park	52,944
20	Dongyai Wildlife Sanctuary	194,669
21	Thap Lan National Park	1,163,231
22	Phu Kradueng National Park	160,250
23	Phu Sa Dok Bua National Park	9,050
24	Phu Chong Na Yoi National Park	437,369
25	Huay Tabtan - Huay Samran Wildlife Sanctuary	319,388
26	Sub-lungka Wildlife Sanctuary	313
27	Khao Phra Wihan National Park	85,106
28	Nam Nao National Park	409,669
29	Ang-Keb-Nam-Sa-Nam-Bin Non-Hunting Area	4,094
30	Ang-Keb-Nam-Huai-Ta-Lat Non-Hunting Area	6,525
31	Ang-Keb-Nam-Huai-Cha-Rakhe-Mak Non-Hunting Area	5,488
32	Khao-Kra-Dong Non-Hunting Area	1,206
33	Dun-Lam-Phan Non-Hunting Area	381
34	Nong-Waeng Non-Hunting Area	125
35	Tham-Pha-Nam-Thip Non-Hunting Area	57,769
36	Lam-Pao Non-Hunting Area	137,544
37	Huai Huad National Park	495,581
38	Muk Da Han National Park	31,263
39	Nam Narw National Park	3,081
40	Nam Tok Chat Ta Kan National Park	1,250
41	Pa Tam National Park	220,838
42	Pu Rue National Park	75,019
43	Pu Wo Wild Sanctuary	118,019
44	Pu Hin Rong Kar National Park	64,263
45	Pu Luang Wild Sanctuary	446,781
46	Pu Sa Dok Bur National Park	122,394
	<b>Total</b>	<b>8,717,288</b>

### 4-3 Forest Zone and Conservation Area in Northeast Region

**Note:**  
 Data Source:  
 1) Khong basin: Final Report on Formulation of Integrated plan for Water Resources Management in Khong basin (Northeast) 2006, DWR  
 2) Chi and Mun Basin: Region 6 Office, RID

**Date:** September 2010

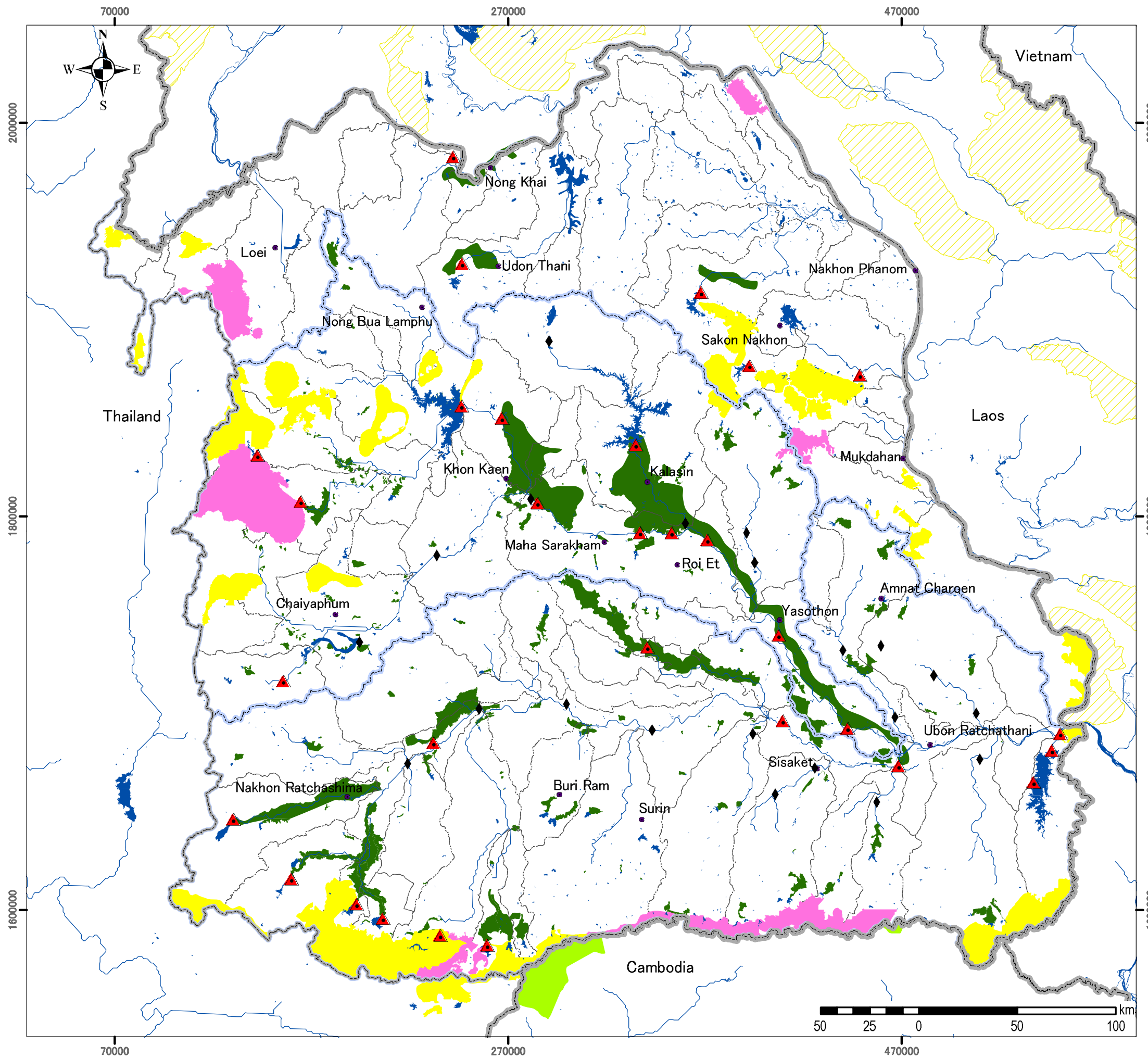
#### LEGEND

**Forest Use Type**

- Area for conservation
- Area for agriculture
- Area for forest economy
- Not forest area
- no information
- Forest Conservation Area
- Reservoirs/Ponds
- International Boundary
- Basin Boundary
- River
- Road
- Rail

\*Name of forest conserve refers to 'No' in drawing and explanation at top-right





### 4-4 Protected Area of Northeast Region

**Note:**  
 Data Source:  
 1) Protected Area: Mekong River Commission  
 2) Irrigation Area (existing): RID

**Date:** September 2010

#### LEGEND

**Forest Function**

- National Park
- Wildlife Sanctuary
- National Biodiversity Conservation Area
- Protected Landscape
- Existing Irrigation Area
- RID Large scale project
- RID Major Weir
- Basin Boundary
- subbasin boundary