

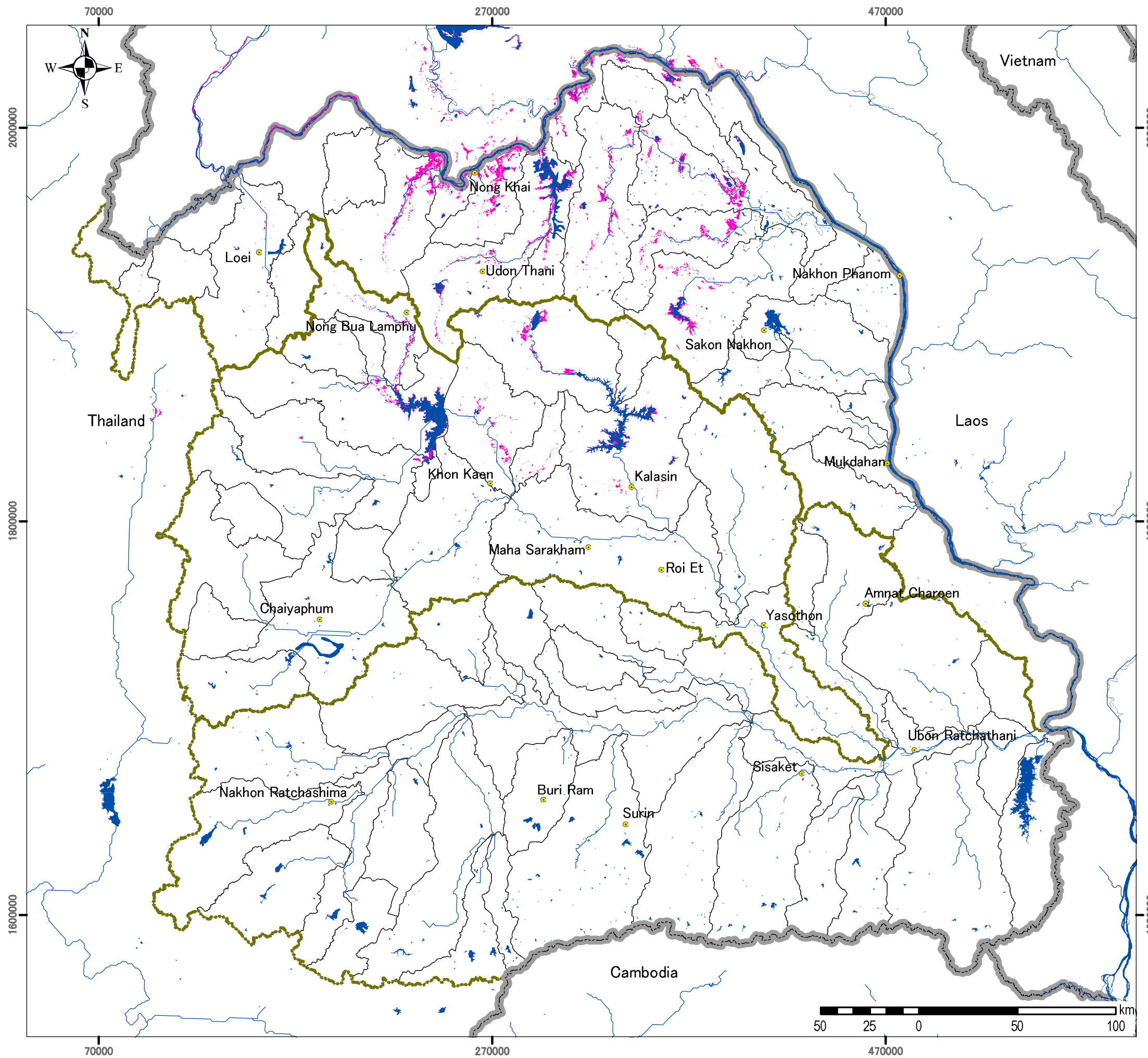
3-15
Drought Experienced Area in Chi and Mun River Basins

Note:
 Data Source: Region 6 Office, RID

Date: September 2010

LEGEND

- Drought Experienced Area**
- No Drought
 - Few Drought
 - Moderate Drought
 - Frequent Drought
- International Boundary
 Basin Boundary
 Subbasin Boundary
 River
 Road
 Built Area
 Rail



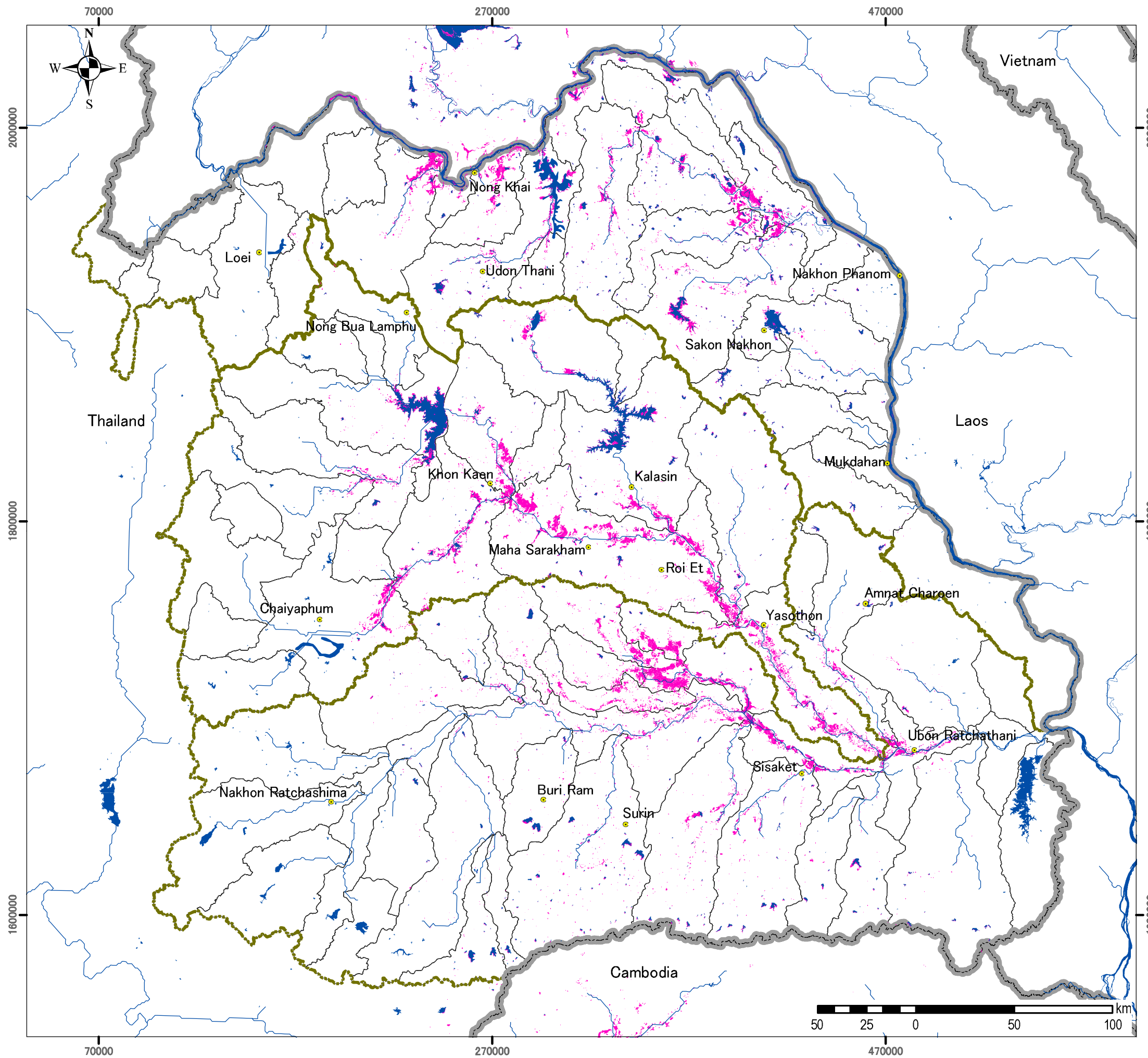
3-16
Inundation Area of Northeast Region
as of 9 Sep 2002

Note:
 Data Source: Mekong River Commission

Date: September 2010

LEGEND

- Inundation Area
- Basin Boundary
- Sub-basin Boundary
- Reservoirs/Ponds
- Rivers



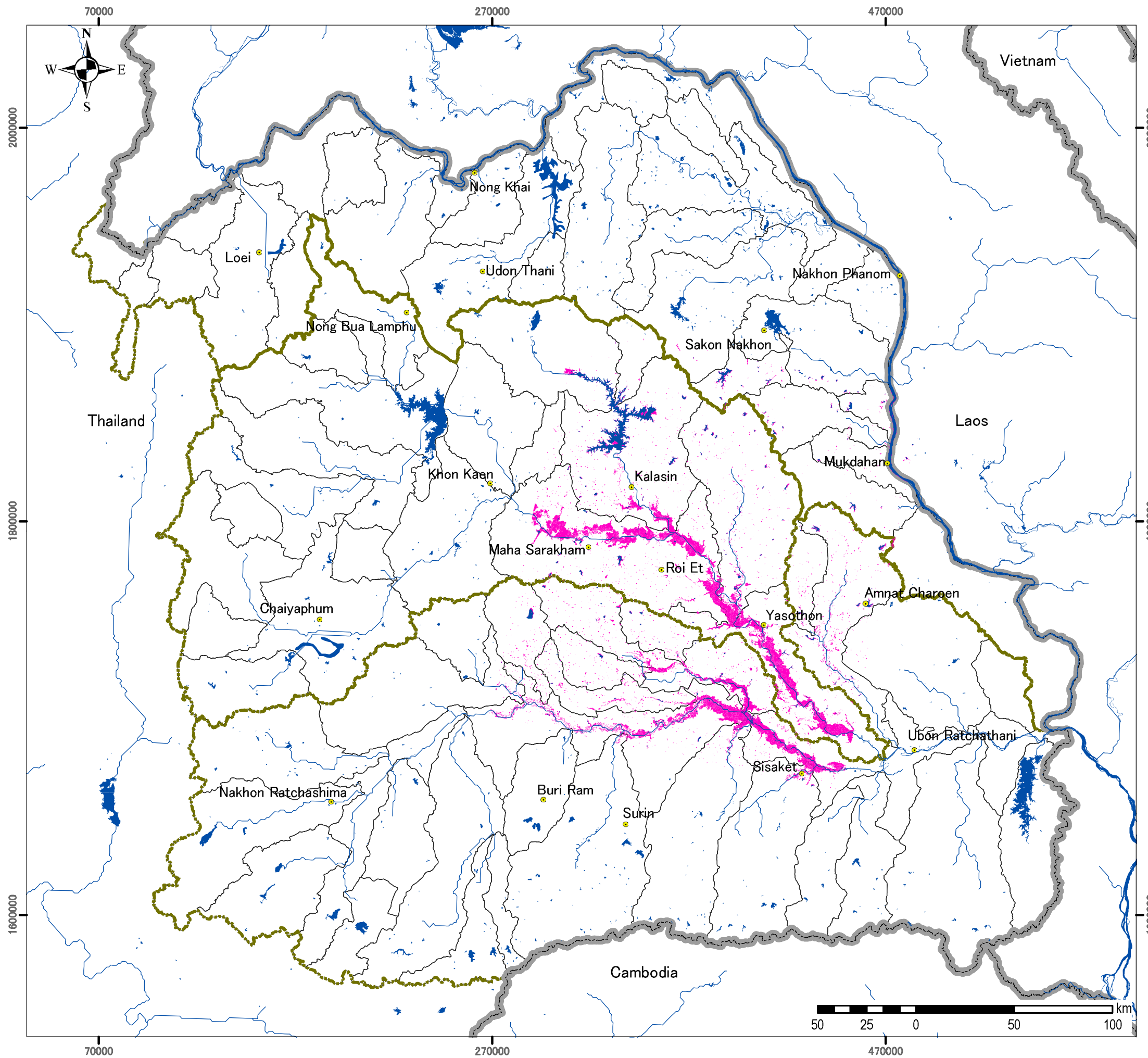
3-17
Inundation Area of Northeast Region
as of 18 Sep 2002

Note:
 Data Source: Mekong River Commission

Date: September 2010

LEGEND

- Inundation Area
- Basin Boundary
- Sub-basin Boundary
- Reservoirs/Ponds
- Rivers



3-18
Inundation Area of Northeast Region
as of 10 Oct 2002

Note:
 Data Source: Mekong River Commission

Date: September 2010

LEGEND

- Inundation Area
- Basin Boundary
- Sub-basin Boundary
- Reservoirs/Ponds
- Rivers