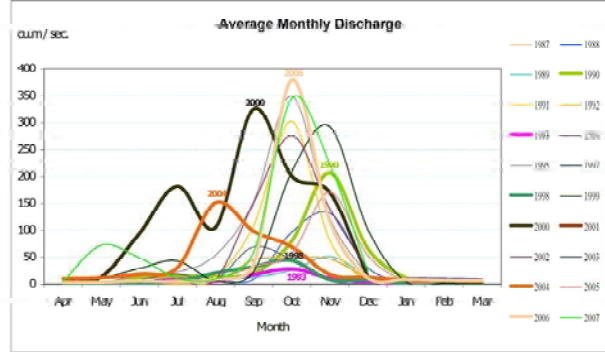
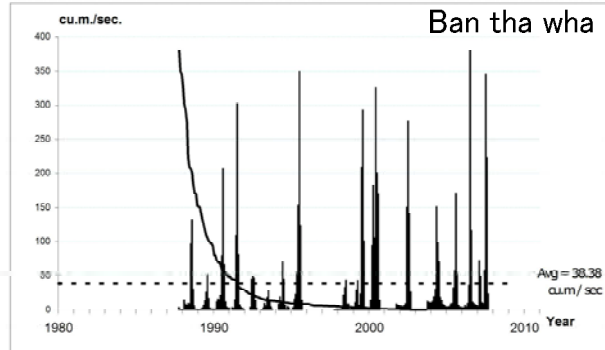
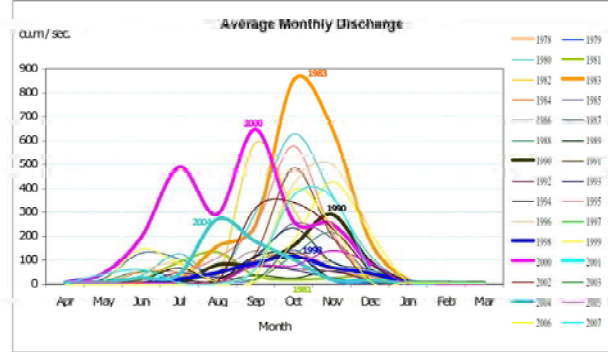
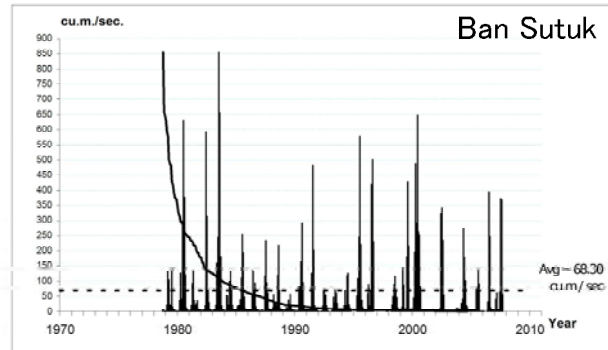


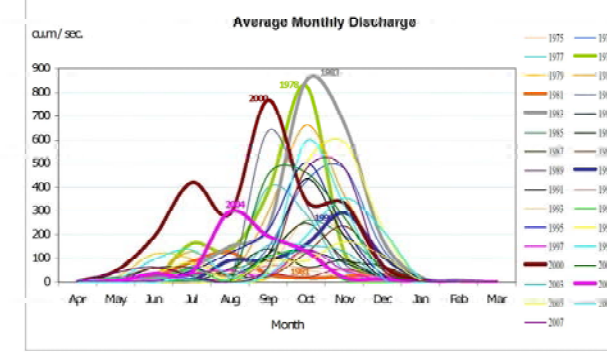
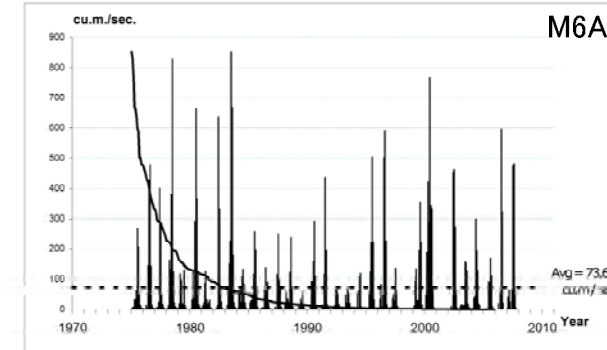
Station: Ban tha wha River: Mun River
 Station Code: 050102 Location: Tambon Kra Bung Nok Amphoe Chumuang Nakhonratchasima Province
 Rainfed Area: 15100 Sq.km Coordinate: 15-22-48 N 102-45-18 E
 Unit: Cum/Sec Client: Department of water resources



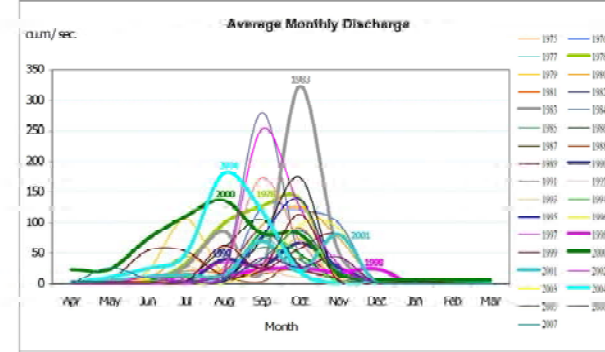
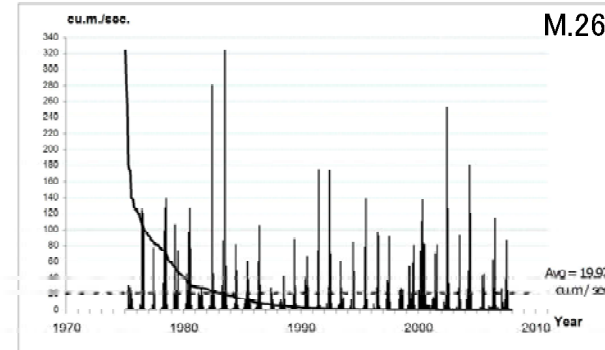
Station: Ban Sutuk River: Mun River
 Station Code: 050105 Location: Tambon Sitouk Amphoe Sitouk Buriram Province
 Rainfed Area: 28800 Sq.km Coordinate: 15-18-12 N 103-17-21 E
 Unit: Cum/Sec Client: Department of water resources



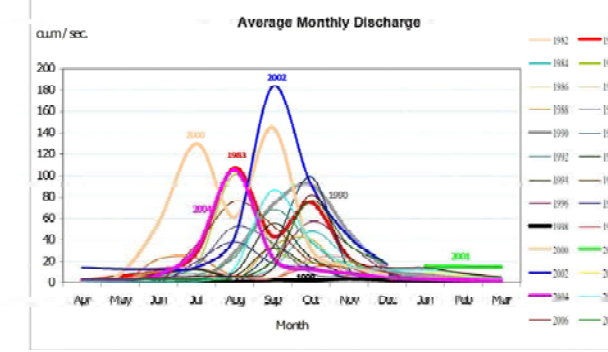
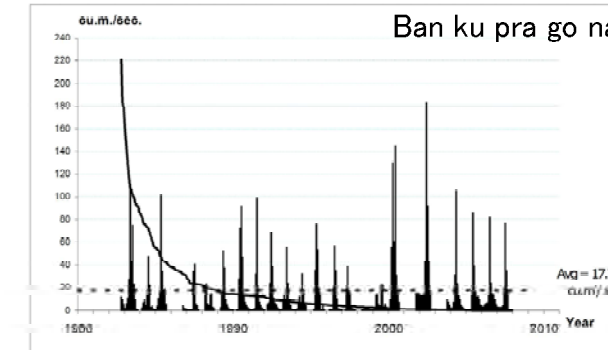
Station: M6A River: Mun River
 Station Code: M6A Location: Tambon Mueang Amphoe Mueang Buriram Province
 Rainfed Area: 5000 Sq.km Coordinate: 15-18-12 N 103-17-21 E
 Unit: Cum/Sec Client: Royal Irrigation Department



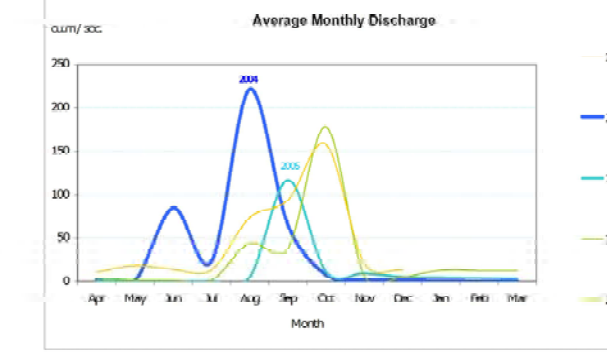
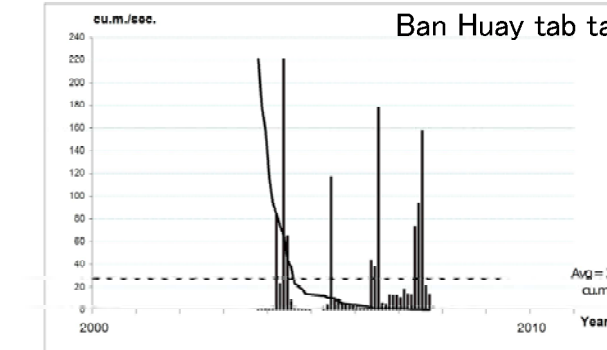
Station: M.26 River: Mun River
 Station Code: M.26 Location: Tambon Mueang Amphoe Mueang Buriram Province
 Rainfed Area: 2527 Sq.km Coordinate: 14-54-03 N 103-24-21 E
 Unit: Cum/Sec Client: Royal Irrigation Department



Station: Ban ku pra go na River: Mun River
 Station Code: 052001 Location: Tambon Tungkhua Amphoe Samsat Buriram Province
 Rainfed Area: 3200 Sq.km Coordinate: 15-34-12 N 103-49-24 E
 Unit: Cum/Sec Client: Department of water resources



Station: Ban Huay tab tan River: Mun River
 Station Code: 052101 Location: Tambon Huaytabtan Amphoe Huaytabtan Buriram Province
 Rainfed Area: 2000 Sq.km Coordinate: 15-14-03 N 104-01-24 E
 Unit: Cum/Sec Client: Department of water resources

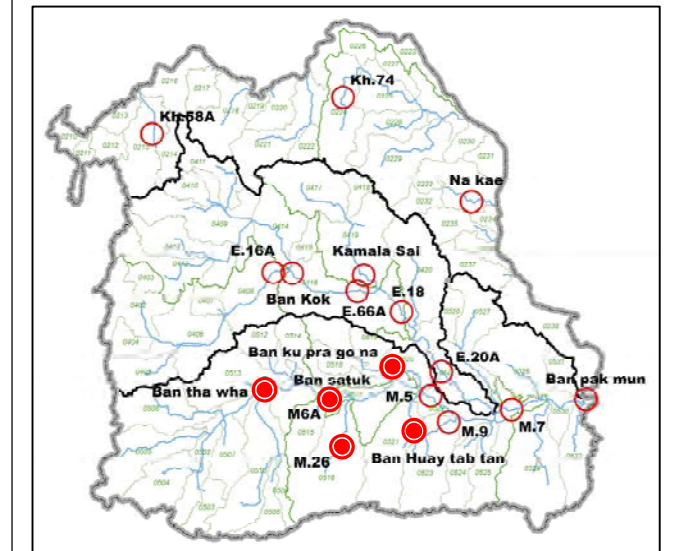
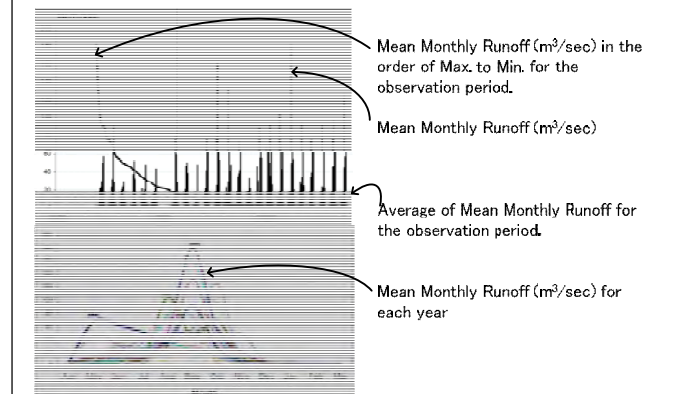


3-3 (3) Monthly Runoff Records for Control Points in Mun Basin

Note:
 Data Source: Processed by JICA study Team using RID and DWR observation data

Date: September 2010

LEGEND



Survey on Basic Data –
 Information Collection and Confirmation
 on Water Resources Management
 in Northeast Region of Thailand

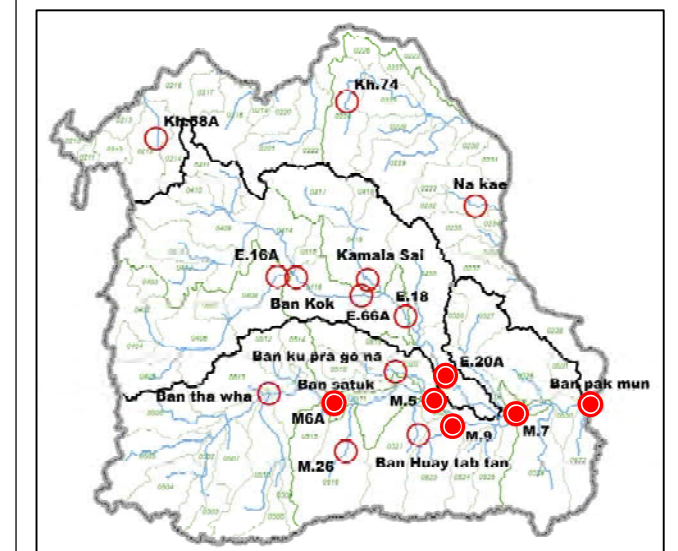
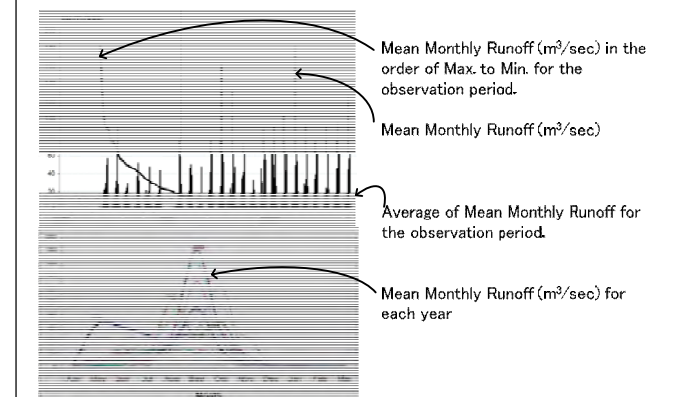


3-3 (4) Monthly Runoff Records for Control Points in Mun Basin

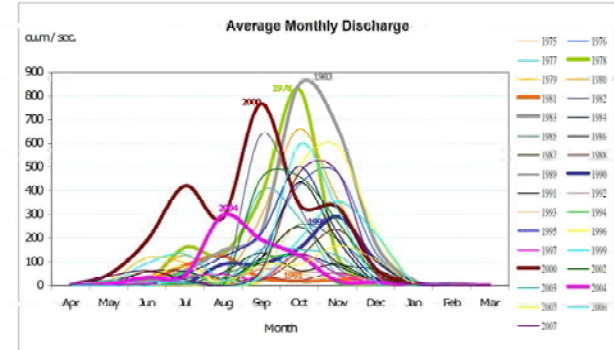
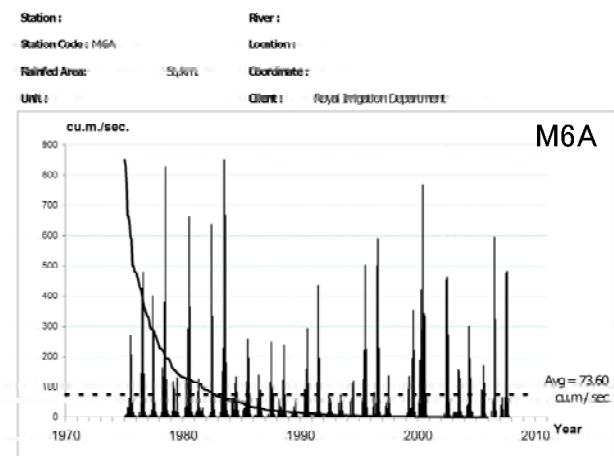
Note:
Data Source: Processed by JICA study Team using
RID and DWR observation data

Date: September 2010

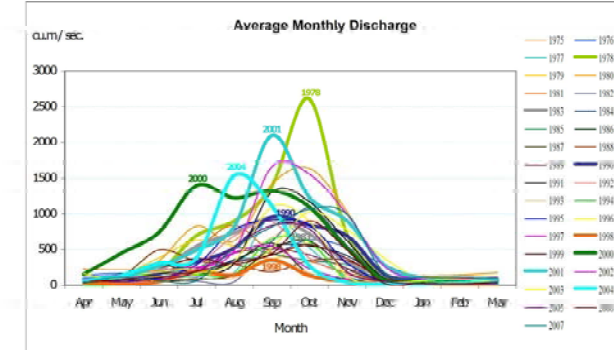
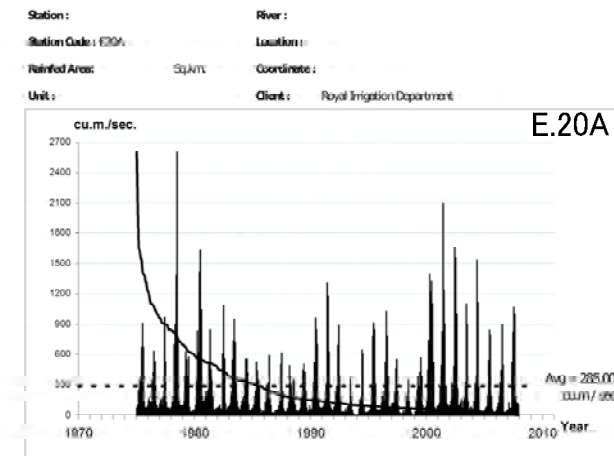
LEGEND



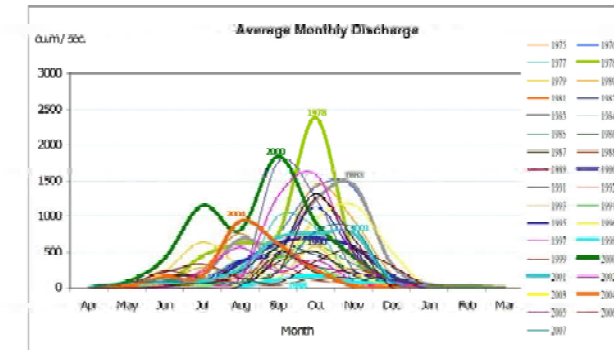
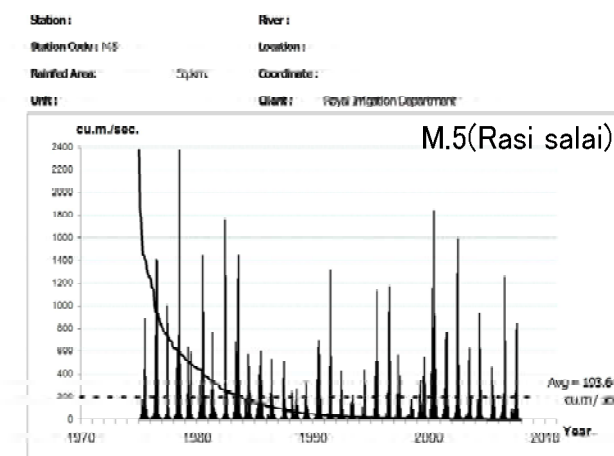
Survey on Basic Data –
Information Collection and Confirmation
on Water Resources Management
in Northeast Region of Thailand



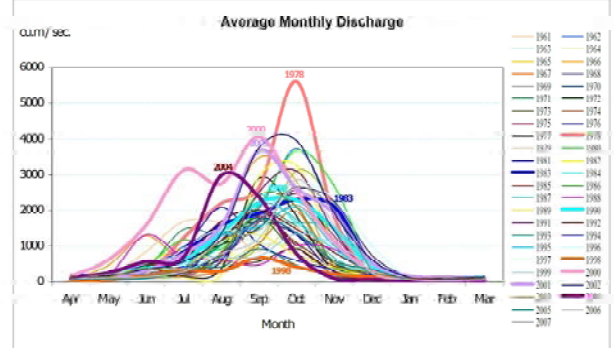
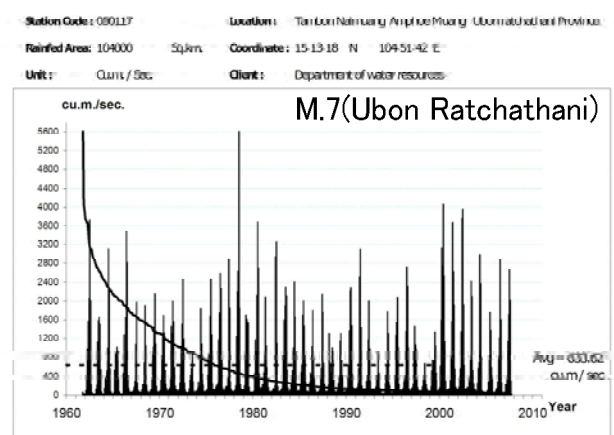
Page 67



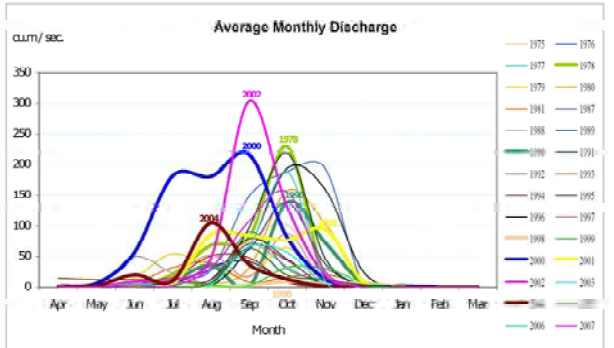
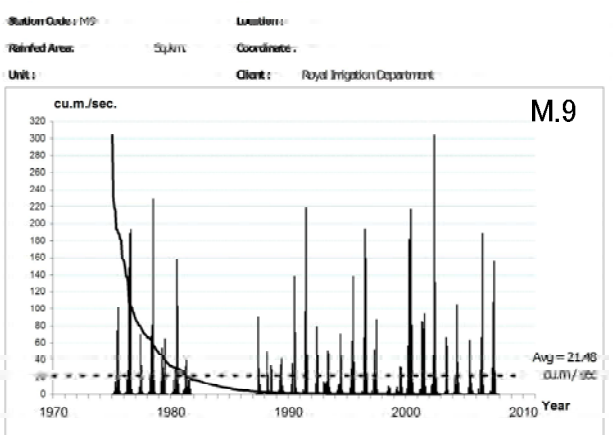
Page 57



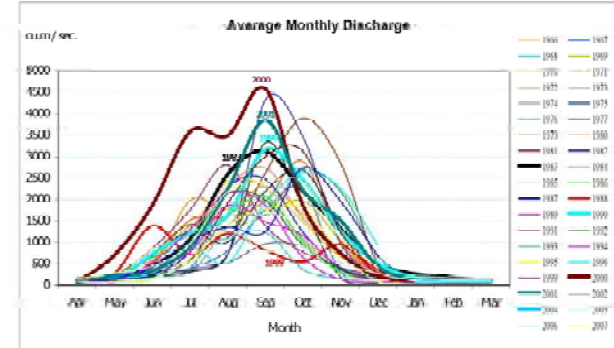
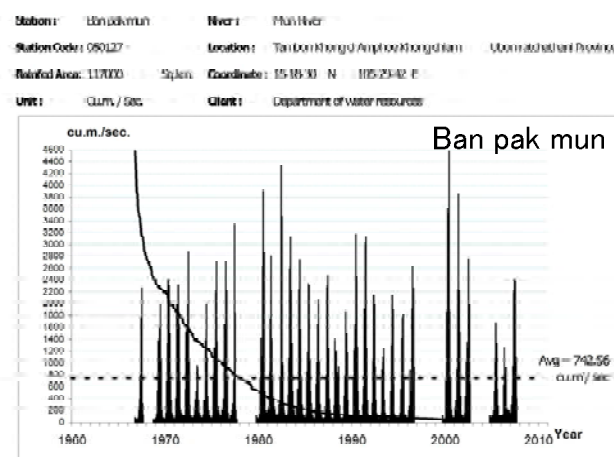
Page 57



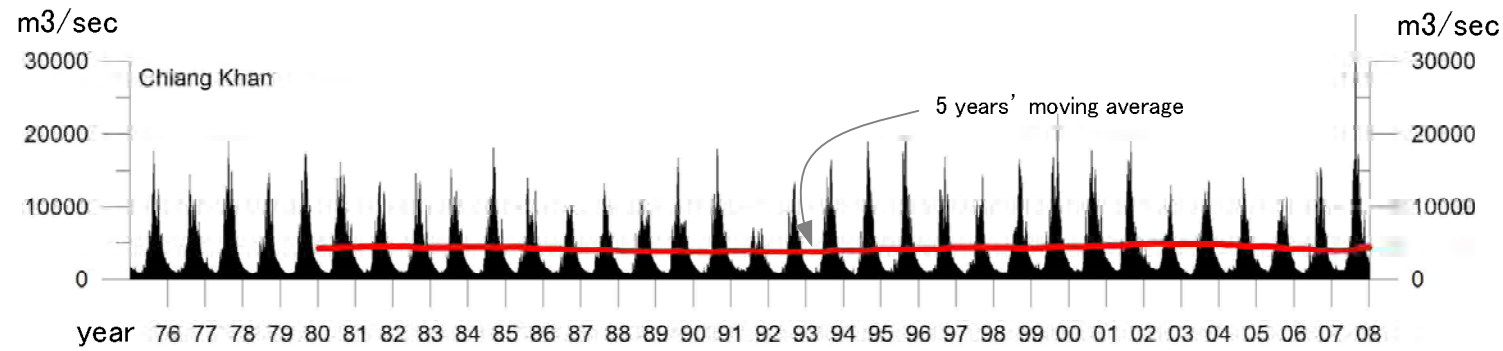
Page 74



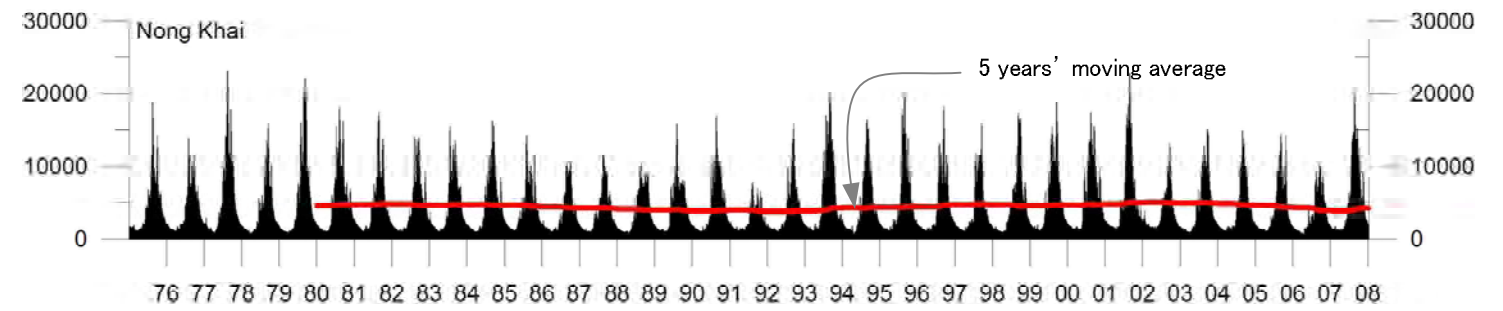
Page 78



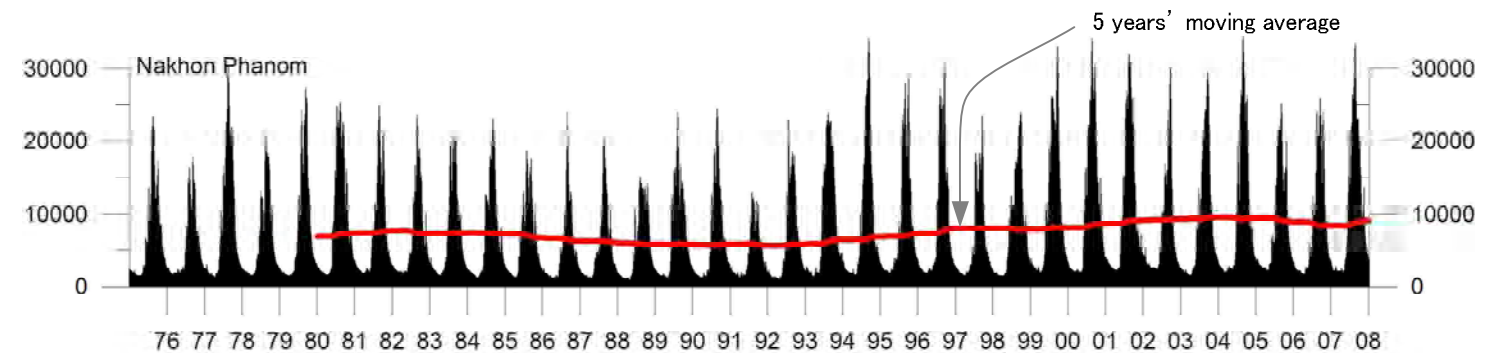
Page 85



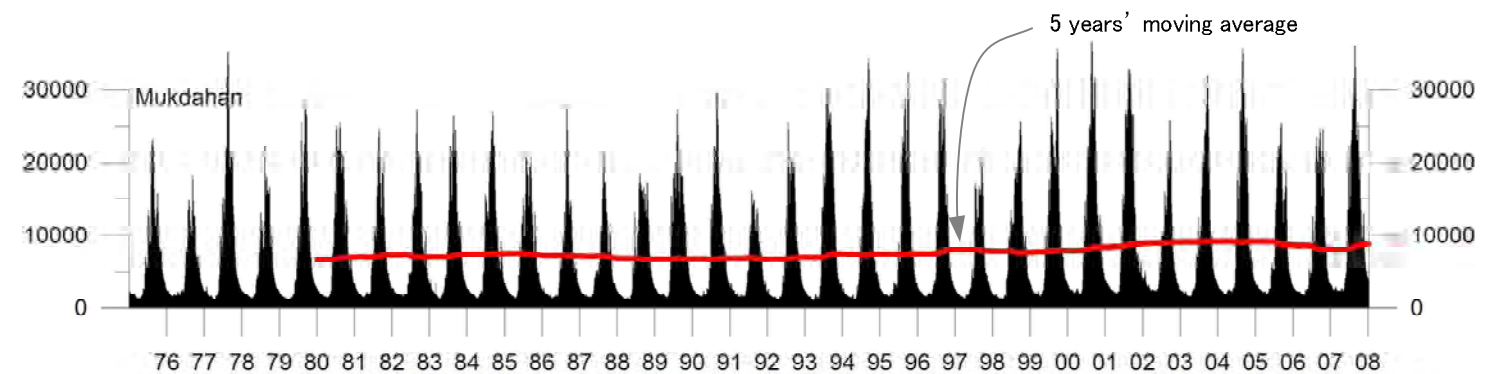
Chiang Khan	
Min.	531
Max.	36,400
Avg.	4,288



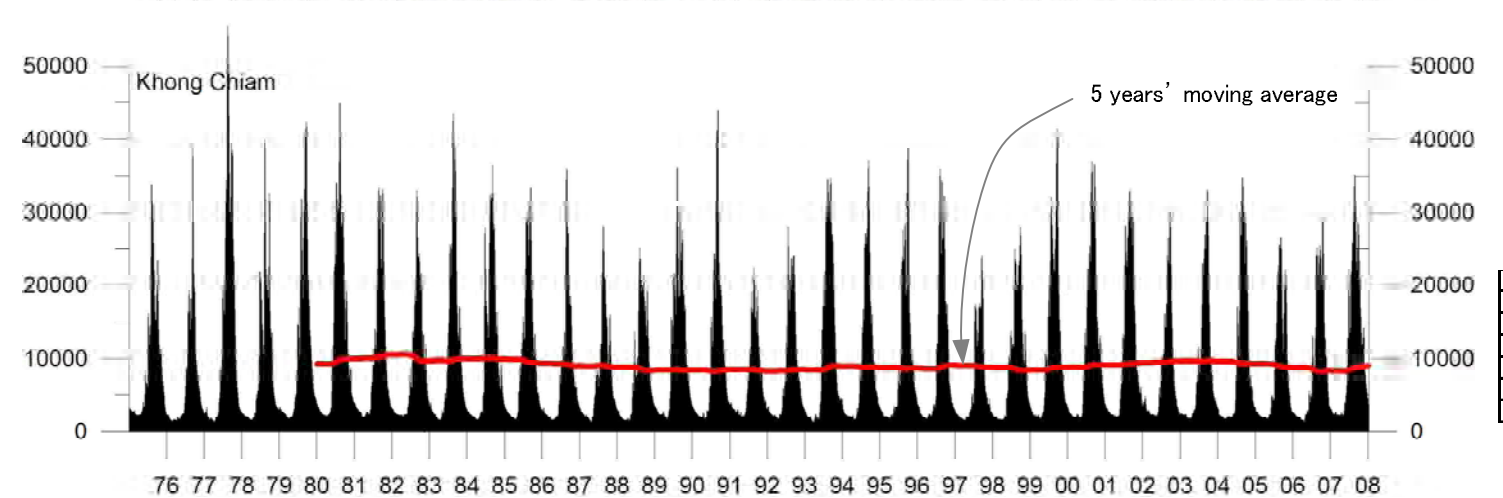
Nong Khai	
Min.	590
Max.	23,200
Avg.	4,431



Nakhon Phanom	
Min.	857
Max.	34,500
Avg.	7,537



Mukdahan	
Min.	1,070
Max.	36,800
Avg.	7,645



Khong Chiam	
Min.	1,250
Max.	9,078
Avg.	9,077

Average Discharge in 1977-2006 (MCM/year)

STATION	BASIN	ANNUAL	DRY	WET
Chiang Khan	Mekong	50,572	9,403	41,169
Pa Mong Dam (Ban Kok Suag)	Mekong	51,139	9,499	41,640
Nong khai	Mekong	53,713	9,959	43,754
Na khon pa nom	Mekong	88,529	13,790	74,739
Muk da han	Mekong	92,029	13,718	78,311
Khong Chiam (Ban Dan)	Mekong	108,008	15,616	92,392

3-4

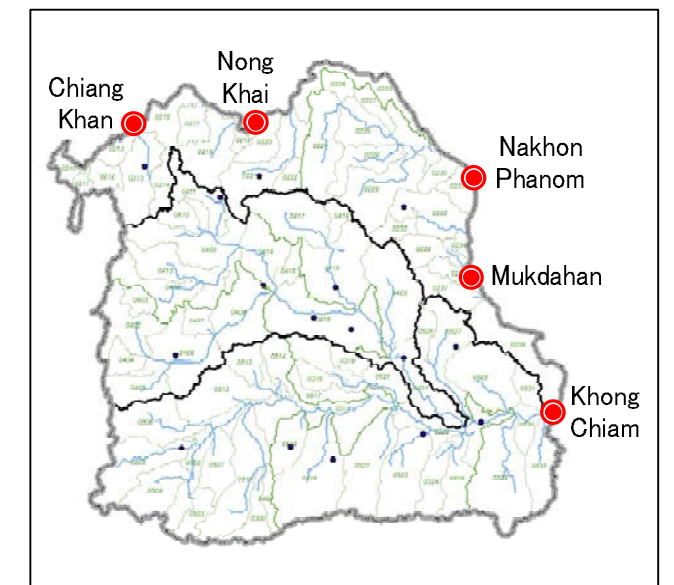
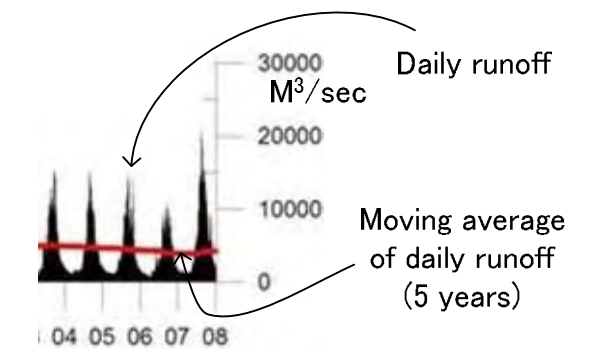
Daily Runnoff of Mekong River

Note:

Data Source: Processed by JICA study Team using DWR observation data

Date: September 2010

LEGEND



Survey on Basic Data –
Information Collection and Confirmation
on Water Resources Management
in Northeast Region of Thailand

