

### 3-2 Location Map of Collected Runoff Stations

Location of River Gauging Station



Average Annual Runoff and Yield (1977 – 2006)

#### Chi Basin

Code	Name	Sub Basin	Area (km2)	Annual Runoff		Annual Yield	
				(MCM)	(CMS)	(lit/sec)	mm
40201	Ban Non Tum	0402	1,440	535		11.8	371
E.32A	E.32A	0402	2,905	789	19	8.6	272
40602	Ban Tad Ton	0406	326	118	2	11.5	362
E.23	E.23	0406	6,835	1,128	40	5.2	165
40101	Ban Chot	0408	10,200	1,675	36	5.2	164
E.16A	E.16A	0408	13,171	1,944	40	4.7	148
E.9	E.9	0408	11,020	1,692	36	4.9	154
40903	Ban Kae	0409	1,260	404		10.2	320
40904	Ban Non Sam Ran	0409	1,190	371		9.9	312
40908	Ban Jom Thong	0409	2,570	739		9.1	287
40909	Ban Nong Ja Plong	0409	315	22		2.2	69
41001	Ban Khok laem	0410	815	211		8.2	259
41103	Ban wang Muen	0411	1,260	342	14	8.6	272
41201	Ban Phrom Tai	0412	2,000	167		2.7	84
41304	Ban Tha Dua	0413	1,500	425		9.0	284
E.22A	E.22A	0414	13,183	1,466	58	3.5	111
40103	Ban Kok	0416	28,500	3,817	115	4.3	134
40104	Ban Kui Koh	0416	39,200	5,671		4.6	145
40105	Ban Bung Klah	0416	39,700	6,594		5.3	166
40106	Ban sa Baeng	0416	40,100	7,288		5.8	182
E.18	E.18	0416	41,594	6,791	159	5.2	163
E.8A	E.8A	0416	30,764	4,192	104	4.3	136
E66A	E.66A	0416	32,190	5,592	104	5.5	174
E91	E.91	0416	29,265	2,893	62	3.1	99
41901	Kamala Sai	0419	5,680	1,713		9.6	302
42003	Ban Na Thom	0420	3,240	968		9.5	299
40107	Yasothon	0421	43,100	8,653	210	6.4	201
E.20A	E.20A	0421	47,818	8,965	214	6.0	187

#### Khong Basin

Code	Name	Sub Basin	Area (km2)	Annual Runoff		Annual Yield	
				(MCM)	(CMS)	(lit/sec)	mm
21101	Dan Sai	0211	401	200	4	15.8	498
21201	Tee Tang Khuan	0212	703	338	7	15.2	481
21302	Ban pak huay	0213	4,090	1,469	22	11.4	359
21502	Wang sa pung	0215	1,240	595		15.2	480
21503	Ban loei wang sai	0215	235	252	4	34.0	1,073
KH.58A	Kh.58A	0215	3,101	995	32	10.2	321
20105	Chiang Khan	0216	292,000	133,393	3,886	14.5	457
21803	Ban gruad	0218	2,370	925		12.4	390
21804	Ban pho tak	0218	255	140		17.4	549
20112	Pa Mong Dam(Ban Kok)	0219	299,000	131,728	3,865	14.0	441
20114	Nong khai	0219	302,000	139,345	4,086	14.6	461
40907	Ban Hua Khua	0219	233	43		5.9	186
KH.73	Kh.73	0221	3,015	608	28	6.4	202
KH.74	Kh.74	0224	2,145	1,280	45	18.9	597
22501	Ban tah kok daeng	0225	4,650	4,699		32.1	1,011
22601	Ban tah si chom chuen	0225	710	1,213		54.2	1,708
22701	Ban Nong yang	0227	598	954		50.6	1,595
22801	Ban korn sai	0228	780	824		33.5	1,056
22901	Ban porkyai	0229	2,140	818		12.1	382
KH.54	Kh.54	0229	3,123	1,556	42	15.8	498
20122	Na khon pa nom	0231	373,000	234,751	5,393	20.0	629
23202	Ban sa phan thang hai	0232	1,070	311	4	9.2	291
KH.21B	Kh.21B	0232	641	218	11	10.8	339
23303	Na kae	0233	2,360	1,205	12	16.2	511
KH.19	Kh.19	0233	3,424	933	30	8.6	273
23501	Ban sa phan nong aek	0235	1,340	628		14.9	468
23504	Ban na kam noi	0235	1,220	571		14.9	468
23505	Ban na lak	0235	925	448		15.4	484
20129	Muk da han	0236	391,000	242,335	5,393	19.7	620

#### Mun Basin

Code	Name	Sub Basin	Area (km2)	Annual Runoff		Annual Yield	
				(MCM)	(CMS)	(lit/sec)	mm
50101	Bansom	0502	7,850	713		2.9	91
50102	Ban kham klang	0502	14,800	350		0.8	24
50103	Ban tha wha	0502	15,100	890		1.9	59
M.2	M.2	0502	4,800	527	16	3.5	110
M8	M.8	0510	5,025	433	8	2.7	86
50104	Ban bung bao	0511	23,200	1,934		2.6	83
50105	Ban satuk	0511	26,800	1,875		2.2	70
50106	Ban chumponburi	0511	28,400	1,806		2.0	64
50108	Ban tha toom	0511	34,400	3,224		3.0	94
M.6A	M.6A	0511	28,275	2,282	67	2.6	81
51301	Ban dorn man	0513	2,120	571		8.5	269
51603	Ban la loon	0516	3,000	760		8.0	253
M26	M.26	0516	2,927	636	9	6.9	217
52001	Ban ku pra go na	0520	3,230	396		3.9	123
52101	Ban Huay tab tan	0521	2,030	776		12.1	382
50112	Rasi salai (Ban klang)	0522	44,600	5,742		4.1	129
50117	Ubon Ratchathani	0522	104,000	20,590	528	6.3	198
M.5	M.5	0522	44,275	5,981	172	4.3	135
M.7	M.7	0522	106,673	19,383	516	5.8	182
52302	Ban tha rua	0523	2,890	639		7.0	221
M.9	M.9	0523	3,026	643	10	6.7	212
52501	Ban rai Charoen	0525	912	503		17.5	552
52502	Ban saphan huaykayung	0525	2,900	1,113		12.2	384
M32	M.32	0527	1,654	854	17	16.4	516
M32A	M.32A	0527	1,654	597	21	11.5	361
20139	Khong Chiam ( Ban Dan)	0530	419,000	283,018	6,803	21.4	675
50120	Tai kaeng sa pue	0530	116,000	25,786		7.1	222
50127	Ban pak mun	0530	117,000	24,010		6.5	205

Data Source: Processed by JICA study Team using RID and DWR observation data

Survey on Basic Data – Information Collection and Confirmation on Water Resources Management in Northeast Region of Thailand



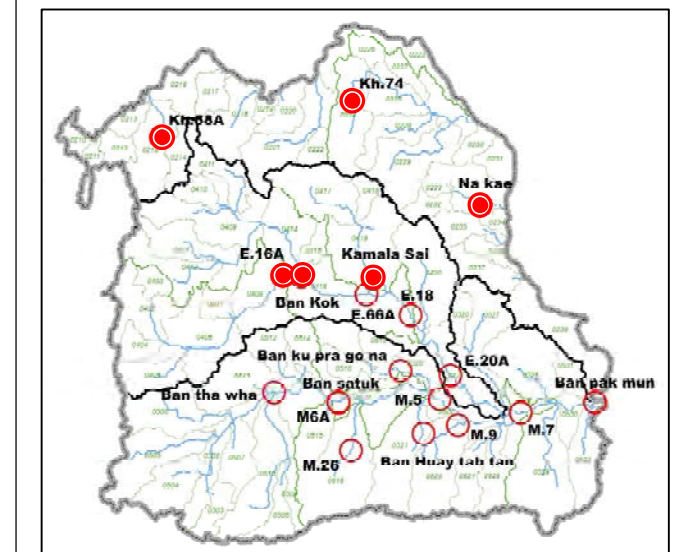
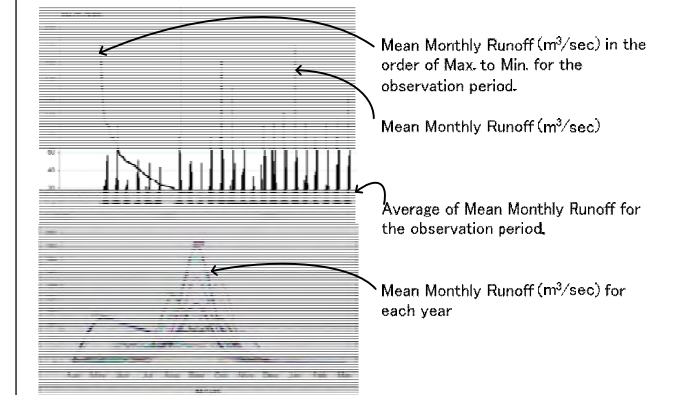
### 3-3 (1) Monthly Runoff Records for Control Points in Khong and Chi Basin

**Note:**

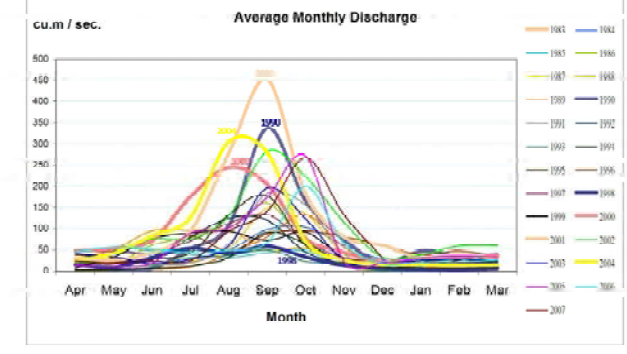
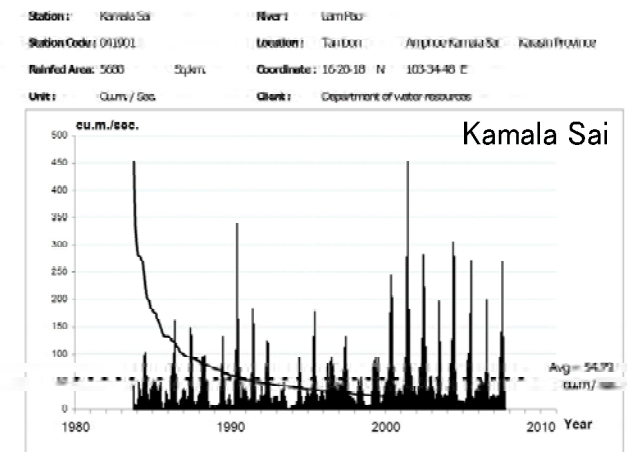
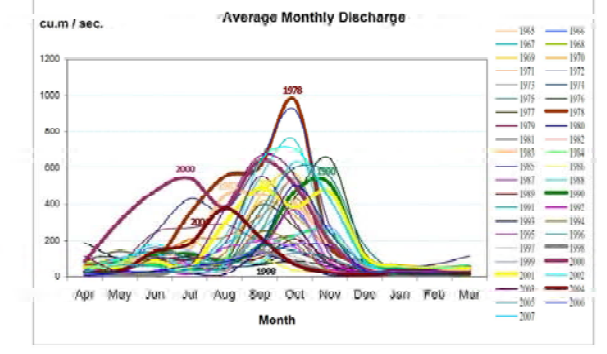
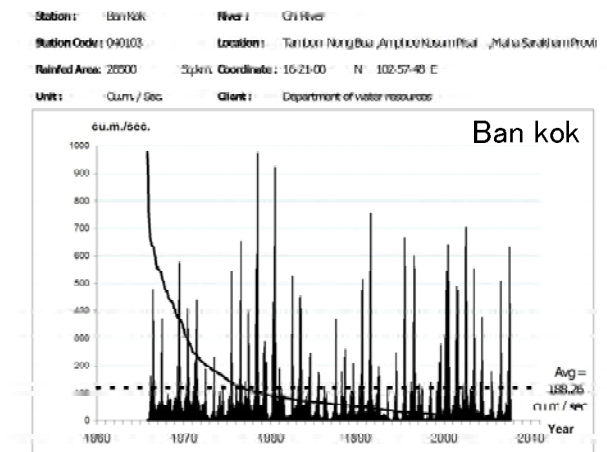
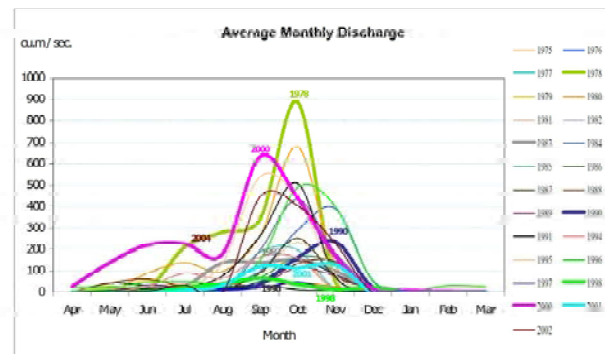
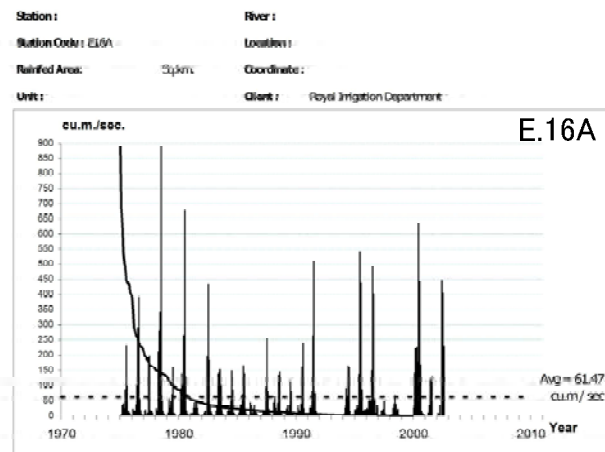
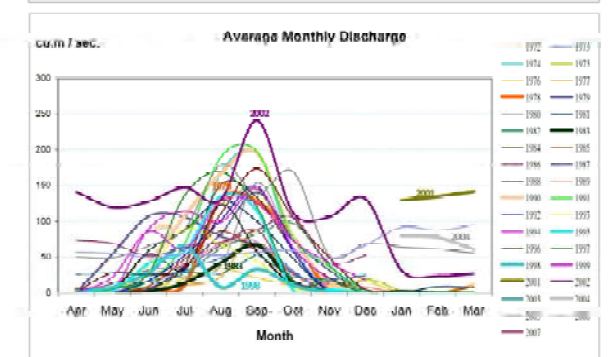
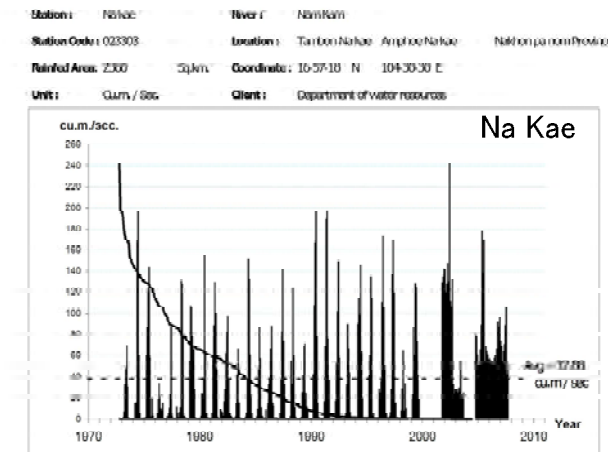
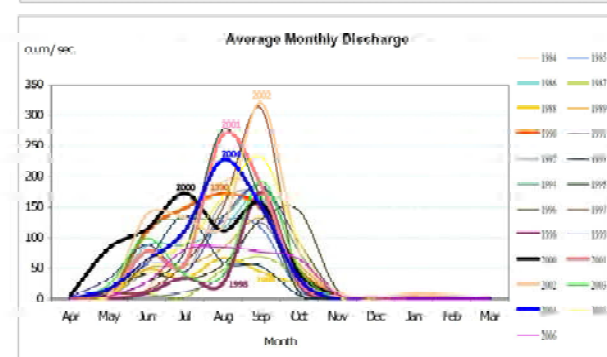
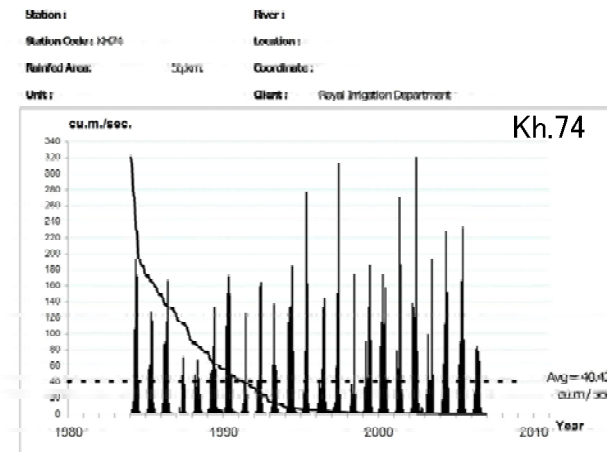
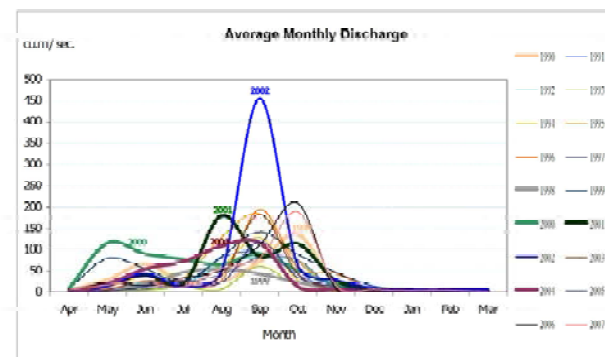
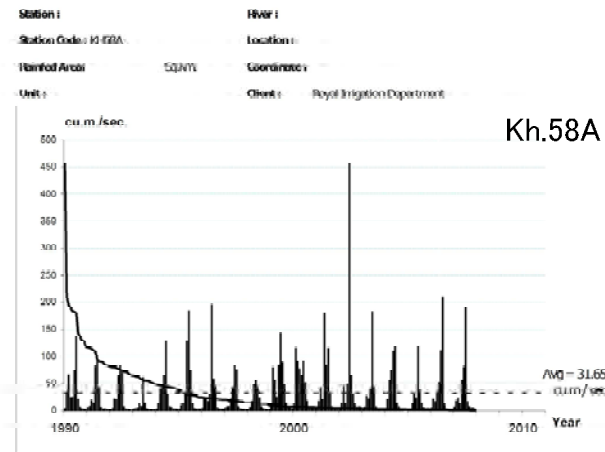
Data Source: Processed by JICA study Team using  
RID and DWR observation data

Date: September 2010

**LEGEND**



Survey on Basic Data –  
Information Collection and Confirmation  
on Water Resources Management  
in Northeast Region of Thailand



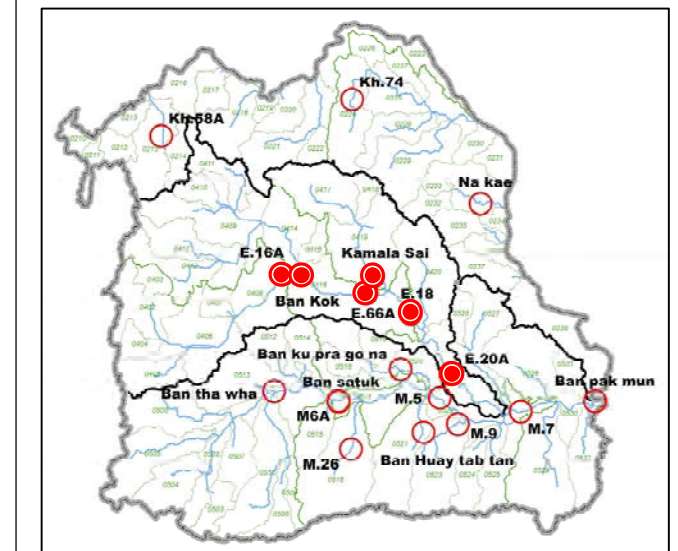
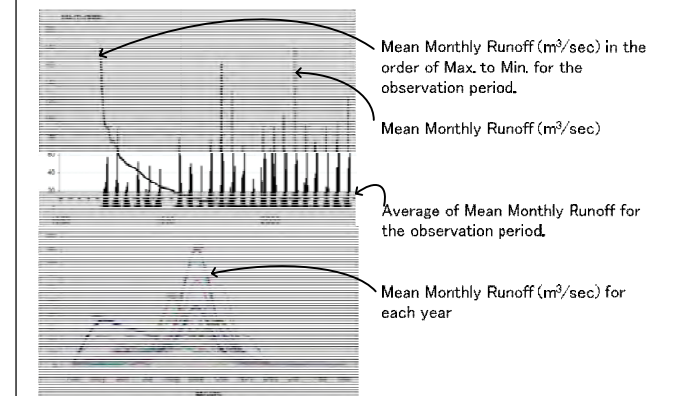
### 3-3 (2) Monthly Runoff Records for Control Points in Chi Basin

**Note:**

Data Source: Processed by JICA study Team using  
RID and DWR observation data

Date: September 2010

**LEGEND**



Survey on Basic Data –  
Information Collection and Confirmation  
on Water Resources Management  
in Northeast Region of Thailand

