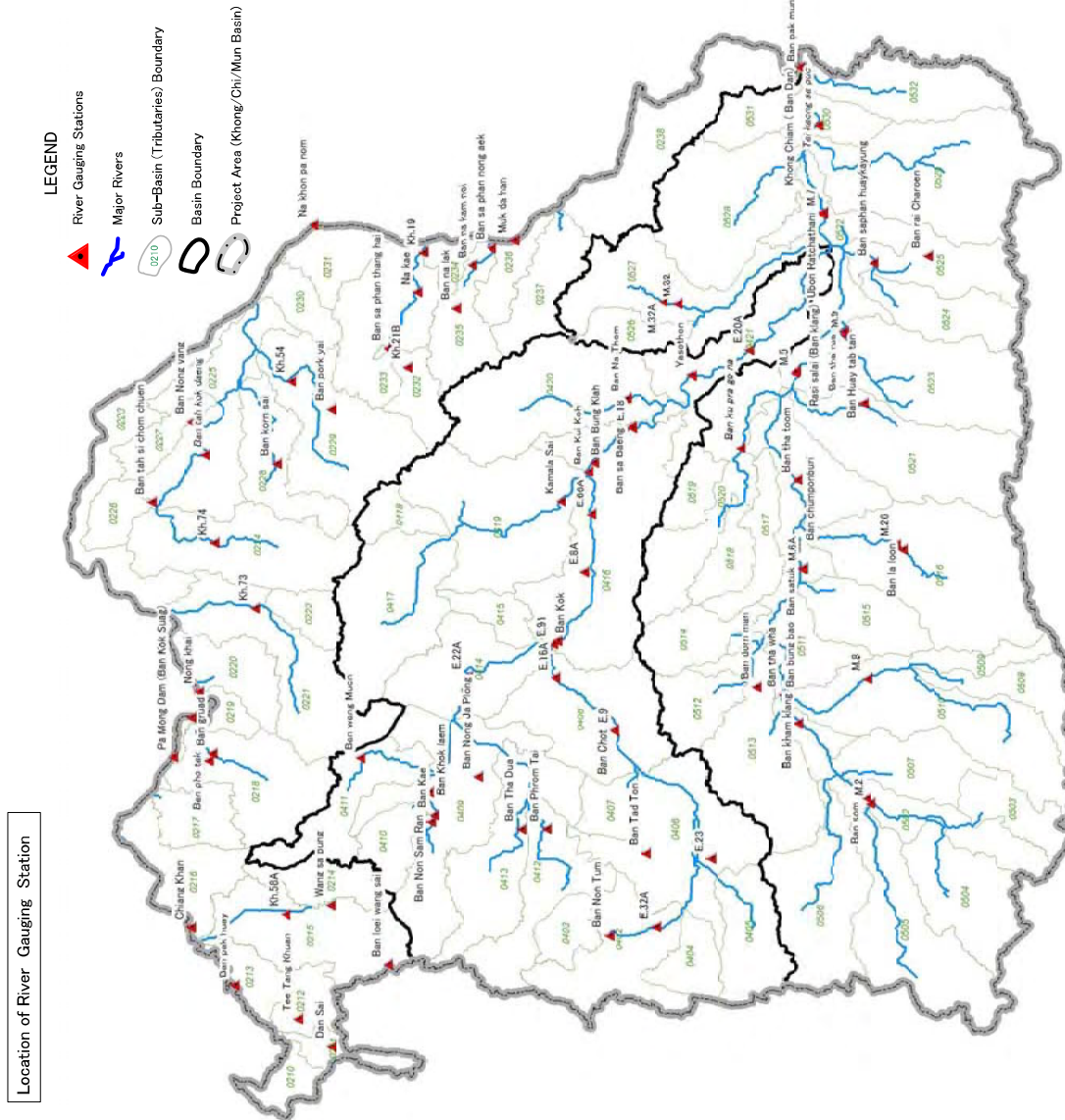


Appendix 3.6.2 Records of Major Runoff Station (Location map and Hydrographs)



Average Annual Runoff and Yield (1977 – 2006)

Code	Name	Sub Basin (km ²)	Area (km ²)	Annual Runoff (mm)	Annual Yield (mm)
21101	Ban Sai	401	401	15.8	498
21102	Ban Tha Dua	41304	1500	425	90
21201	Tee Bangkuan	0212	703	338	7
21302	Banpak huay	0213	4080	1469	22
21302	Wangsa pang	0215	1248	955	15.2
21303	Banba wangsai	0215	235	252	4
21304	Kh.59A	0215	3101	995	32
21305	Chang Khan	0216	292,000	133,393	3,888
21803	Banquay	0218	2,370	925	12.4
21804	Banphokak	0218	295	140	17.4
20112	Pa Mong Dam (Ban Kok Stage)	0219	299,000	131,728	3,865
20114	Nongphai	0219	302,000	139,345	4,086
40307	BanThaKha	0219	233	43	5.8
Kh.173	Kh.73	0221	3,015	668	28
Kh.174	Kh.74	0224	2,145	1,280	45
22501	Banhekkabang	0225	4,653	4,699	32.1
22601	Banhsa chomchuen	0225	710	1,213	54.2
22701	BanKangyong	0227	598	954	50.6
22801	BanKomsal	0228	780	824	33.5
22901	Banponkyai	0229	2,148	818	12.1
Kh.154	Kh.54	0229	3,123	1,556	42
20222	Maknonparom	0231	373,000	224,751	5,393
20232	BansaphanThanghai	0232	1,070	311	4
Kh.218	Kh.218	0232	641	216	11
23303	Na kee	0233	2,360	1,205	12
Kh.119	Kh.19	0233	3,424	933	30
23504	Banrelemlad	0235	1,220	571	14.9
23505	Banrelak	0235	925	448	15.4
20229	Mukdahan	0236	391,000	242,335	5,395
04001	BanNonTun	0402	2,905	789	19
04002	E.30A	0402	1,440	535	11.8
04003	BanTadTon	0406	326	118	2
04005	E.23	0406	6,825	1,128	40
04008	E.16A	0408	13,171	1,944	40
E9	E9	0408	11,020	1,692	36
04009	BanK	0409	1,268	49	10.2
04009	BanNonSan	0409	1,190	371	9.9
04009	BanNonThong	0409	2,570	728	9.1
04009	BanKongJaKong	0409	315	22	2.2
04101	BanKokIam	0410	815	211	8.2
04103	BanVangMuan	0411	1,260	342	14
041201	BanPhromTha	0412	2,008	167	2.7
0413	BanTha Dua	0413	1,500	425	90
0414	E.22A	0414	13,183	1,466	58
0416	BanKok	0416	28,500	3,817	115
0416	BanKhaKha	0416	39,200	5,071	146
0416	BanBangMeh	0416	39,700	6,994	53
0416	E.18	0416	40,100	7,298	58
0416	E.18	0416	41,594	6,791	159
0416	E.8A	0416	30,764	4,192	104
0416	E.66A	0416	32,190	5,932	104
0416	E.91	0416	29,265	2,893	62
0419	Kamla Sai	0419	5,680	1,713	9.6
0420	BanThom	0420	3,240	968	9.5
0421	Yaechon	0421	43,100	8,625	210
0421	E.20A	0421	47,818	8,965	214
0502	Bansom	0502	7,850	713	2.5
0502	BanKamMang	0502	14,800	350	0.8
0502	BanThaWta	0502	15,100	894	1.5
0510	M.2	0510	4,800	57	3.5
0510	M.8	0510	5,025	433	8
0511	Banbungbao	0511	23,200	1,934	2.6
0511	Bansatuk	0511	26,800	1,979	2.2
0511	Banchumponburi	0511	28,400	1,906	2.0
0511	Banhtoom	0511	34,400	3,224	30
0511	M.6A	0511	28,275	2,282	67
0513	Banbomnin	0513	2,120	571	8.5
0516	M.26	0516	2,927	688	9
0520	BanKungprora	0520	3,230	396	3.9
0521	Banhuayabun	0521	2,088	774	12.1
0522	Rasi Saka (BanMang)	0522	44,600	20,984	56
0522	UbonRatchaburi	0522	44,275	5,881	172
0522	M.5	0522	106,675	19,388	56
0523	BanThaUua	0523	2,890	638	7.0
0523	M.9	0523	3,088	648	10
0525	BanCharon	0525	912	503	17.5
0525	Bansaphanhuayayong	0525	2,900	1,113	12.2
0527	M.32	0527	1,694	854	17
0527	M.32A	0527	1,656	597	21
0530	KhongCham (BanDan)	0530	419,000	283,018	6,803
0530	PaKangSapae	0530	116,000	25,986	71
0530	BanKamun	0530	117,000	24,010	6.5

Major River Gauging Station and Average Annual Runoff / Yield in 1977–2006

List of Stations

Station code	Station name	Page
21101	Dan Sai	1
21201	Tee Tang Khuan	2
21302	Ban pak huay	3
21502	Wang sa pung	4
21503	Ban loei wang sai	5
KH.58A	Kh.58A	6
20105	Chiang Khan	7
21803	Ban gruad	8
21804	Ban pho tak	9
20112	Pa Mong Dam (Ban Kok Suag)	10
20114	Nong khai	11
40907	Ban Hua Khua	12
KH.73	Kh.73	13
KH.74	Kh.74	14
22501	Ban tah kok daeng	15
22601	Ban tah si chom chuen	16
22701	Ban Nong yang	17
22801	Ban kom sai	18
22901	Ban pork yai	19
KH.54	Kh.54	20
20122	Na khon pa nom	21
23202	Ban sa phan thang hai	22
KH.21B	Kh.21B	23
23303	Na kae	24
KH.19	Kh.19	25
23501	Ban sa phan nong aek	26
23504	Ban na kam noi	27
23505	Ban na lak	28
20129	Muk da han	29
40201	Ban Non Tum	30
E.32A	E.32A	31
40602	Ban Tad Ton	32
E.23	E.23	33
40101	Ban Chot	34
E.16A	E.16A	35
E.9	E.9	36
40903	Ban Kae	37
40904	Ban Non Sam Ran	38
40908	Ban Jom Thong	39
40909	Ban Nong Ja Plong	40
41001	Ban Khok laem	41
41103	Ban wang Muen	42
41201	Ban Phrom Tai	43
41304	Ban Tha Dua	44
E.22A	E.22A	45

Station code	Station name	Page
40103	Ban Kok	46
40104	Ban Kui Koh	47
40105	Ban Bung Klah	48
40106	Ban sa Baeng	49
E.18	E.18	50
E.8A	E.8A	51
E66A	E.66A	52
E91	E.91	53
41901	Kamala Sai	54
42003	Ban Na Thom	55
40107	Yasothon	56
E.20A	E.20A	57
50101	Ban som	58
50102	Ban kham klang	59
50103	Ban tha wha	60
M.2	M.2	61
M8	M.8	62
50104	Ban bung bao	63
50105	Ban satuk	64
50106	Ban chumponburi	65
50108	Ban tha toom	66
M.6A	M.6A	67
51301	Ban dorn man	68
51603	Ban la loon	69
M26	M.26	70
52001	Ban ku pra go na	71
52101	Ban Huay tab tan	72
50112	Rasi salai (Ban Klang)	73
50117	Ubon Ratchathani	74
M.5	M.5	75
M.7	M.7	76
52302	Ban tha rua	77
M.9	M.9	78
52501	Ban rai Charoen	79
52502	Ban saphan huaykayung	80
M32	M.32	81
M32A	M.32A	82
20139	Khong Chiam (Ban Dan)	83
50120	Tai kaeng sa pue	84
50127	Ban pak mun	85

Station : Dan Sai

River : Nam Man

Station Code : 021101

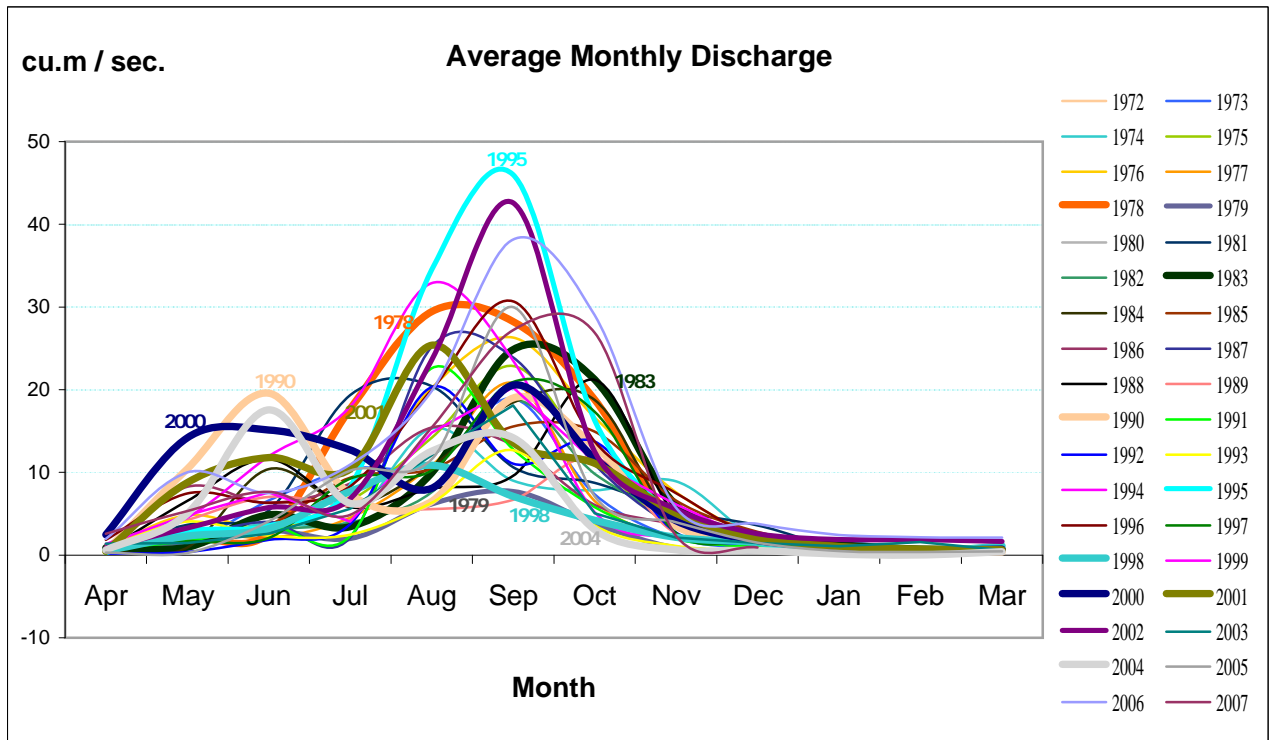
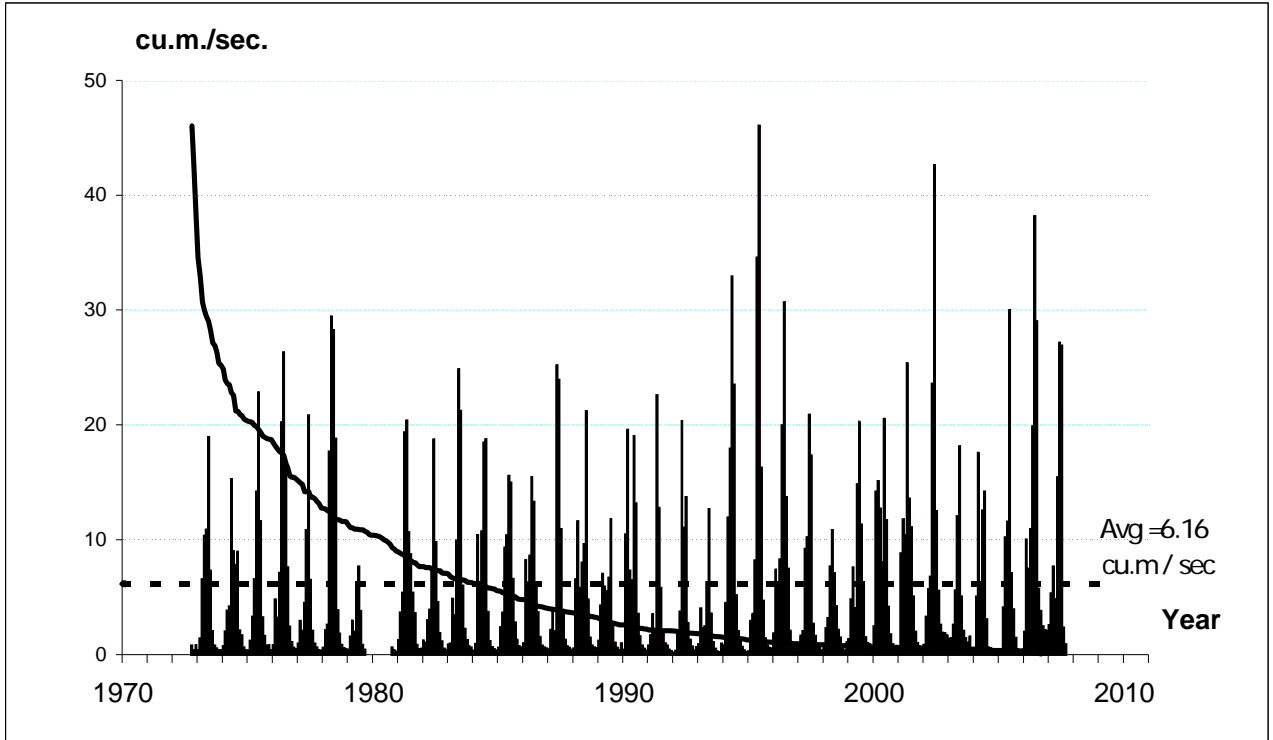
Location : Tambon Dan sai Amphoe Dan sai Loei Province

Rainfed Area: 401 Sq.km.

Coordinate : 17-17-06 N 101-09-06 E

Unit : Cu.m. / Sec.

Client : Department of water resources



Station : Tee Tang Khuan

River : Nam San

Station Code : 021201

Location : Tambon Lad khar Amphoe Phu rua

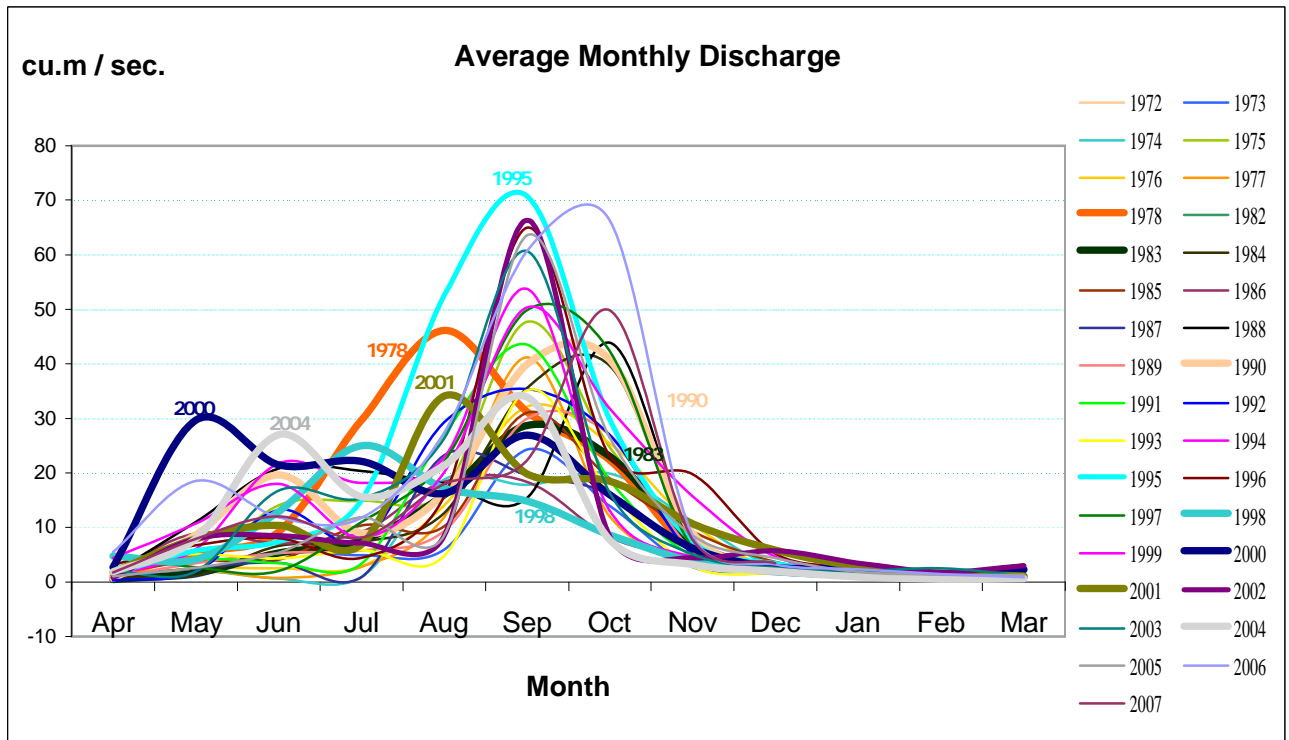
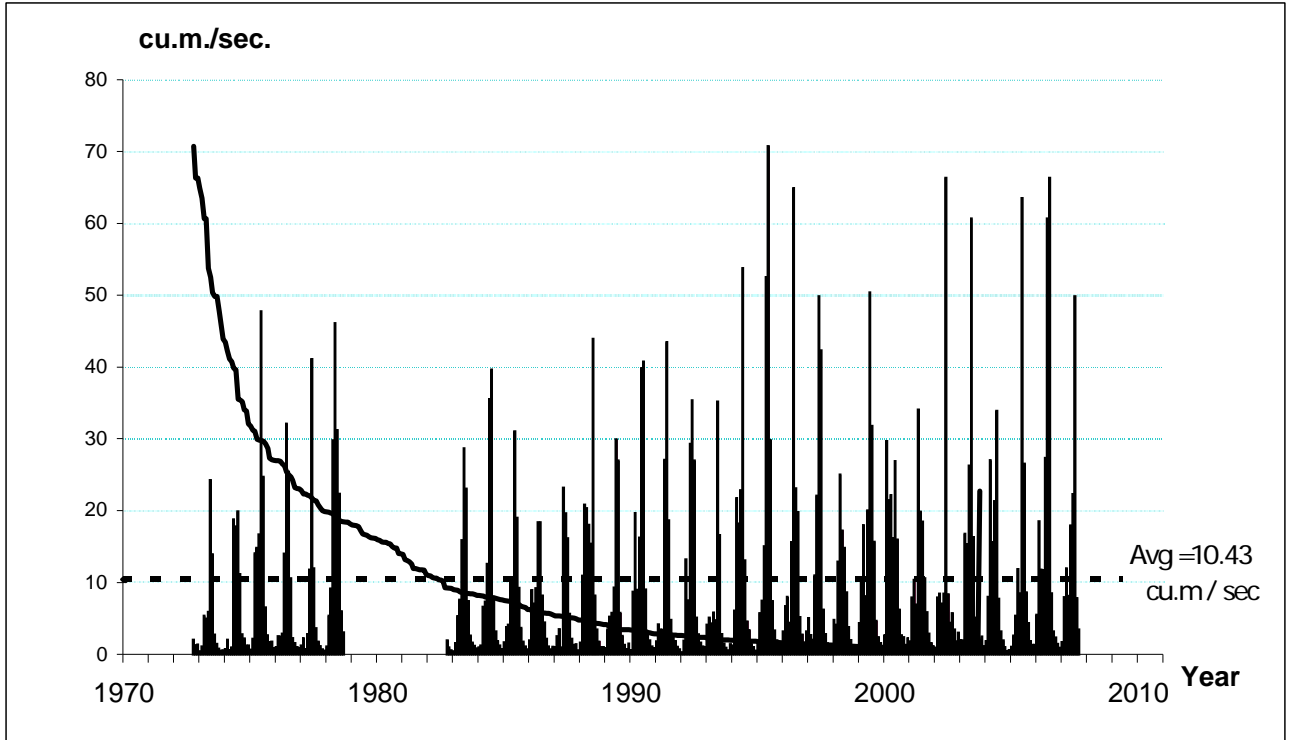
Loei Province

Rainfed Area: 703 Sq.km.

Coordinate : 17-25-54 N 101-16-12 E

Unit : Cu.m. / Sec.

Client : Department of water resources



Detailed data sets for each stations are included in Data CD for reference

Appendix 3.6.3 Monthly Records of Selected 18 Stations

Station : Ban Fak Loei **River :** Nam Loei
Station Code : KH58A **Location :** Amphoe Muang Loei Province
Catchment Area (CA) 3,101 km² **Coordinate** 17-29-35 N 101-44-19 E
Unit : MCM

Year	Wet Season						Dry Season						Total	Wet Season Total	Dry Season Total	
	Jun	July	Aug	Sep	Oct	Nov	Dec	Jan	Feb	Mar	Apr	May				
1987 - 1988	-	-	-	-	-	-	-	-	-	-	-	-	-	-	-	-
1988 - 1989	-	-	-	-	-	-	-	-	-	-	-	-	-	-	-	-
1989 - 1990	-	-	-	-	-	-	-	-	-	-	-	9	77	-	-	-
1990 - 1991	171	63	64	186	363	52	16	8	5	4	14	19	966	901	66	
1991 - 1992	46	36	215	244	114	14	7	7	4	2	2	10	700	669	31	
1992 - 1993	55	53	168	214	187	17	7	3	1	1	7	9	721	693	28	
1993 - 1994	12	31	18	158	36	7	3	1	1	2	4	32	306	263	43	
1994 - 1995	100	123	170	332	76	16	15	7	5	4	5	23	876	817	59	
1995 - 1996	33	88	345	476	197	30	9	6	5	6	10	53	1,256	1,167	89	
1996 - 1997	55	45	73	505	155	113	13	6	5	5	11	17	1,002	946	56	
mean (1987 - 1997)	67	63	150	302	161	36	10	6	4	3	8	30	833	779	53	
1997 - 1998	18	57	111	210	203	17	7	4	2	1	2	15	648	616	32	
1998 - 1999	44	125	146	112	62	16	9	4	2	2	21	212	755	505	250	
1999 - 2000	144	65	224	369	239	122	36	12	9	5	24	309	1,557	1,162	395	
2000 - 2001	234	206	174	236	136	44	17	12	8	13	11	45	1,138	1,031	107	
2001 - 2002	107	52	482	217	306	71	18	13	6	4	12	35	1,323	1,235	88	
2002 - 2003	113	33	130	1,181	173	76	24	16	16	16	11	16	1,806	1,706	100	
2003 - 2004	68	57	104	472	116	16	8	6	8	3	5	54	917	834	83	
2004 - 2005	143	193	291	301	36	18	3	1	0	0	1	8	994	981	13	
2005 - 2006	31	74	60	306	95	33	13	8	9	11	11	56	705	599	106	
2006 - 2007	41	92	137	286	562	23	8	5	3	3	16	46	1,224	1,142	82	
mean (1997 - 2007)	94	96	186	369	193	44	14	8	6	6	12	79	1,107	981	126	
Total Mean	83	82	171	342	180	40	13	7	5	5	10	57	994	898	96	
Wet Year Mean	104	83	223	467	252	68	18	10	7	8	14	74	1,329	1,199	131	
Dry Year Mean	69	81	135	254	129	21	9	5	4	3	7	44	759	688	71	

Station : Ban Hui Lua **River :** Songkarn
Station Code : KH74 **Location :** Amphoe Ban Muang Sakon Nakhom Province
Catchment Area (CA) 2,145 km² **Coordinate** 17-49-05 N 103-23-28 E
Unit : MCM

Year	Wet Season						Dry Season						Total	Wet Season Total	Dry Season Total	
	Jun	July	Aug	Sep	Oct	Nov	Dec	Jan	Feb	Mar	Apr	May				
1977 - 1978	-	-	-	-	-	-	-	-	-	-	-	-	-	-	-	-
1978 - 1979	-	-	-	-	-	-	-	-	-	-	-	-	-	-	-	-
1979 - 1980	-	-	-	-	-	-	-	-	-	-	-	-	-	-	-	-
1980 - 1981	-	-	-	-	-	-	-	-	-	-	-	-	-	-	-	-
1981 - 1982	-	-	-	-	-	-	-	-	-	-	-	-	-	-	-	-
1982 - 1983	-	-	-	-	-	-	-	-	-	-	-	-	-	-	-	-
1983 - 1984	-	-	-	-	-	-	-	-	-	-	0	12	-	-	-	-
1984 - 1985	41	274	498	445	100	9	1	1	1	1	2	15	1,386	1,366	20	
1985 - 1986	145	159	330	301	37	17	2	1	1	1	4	33	1,031	989	42	
1986 - 1987	226	229	298	431	34	6	3	1	1	0	0	0	1,228	1,223	5	
mean (1977 - 1987)	137	221	376	392	57	10	2	1	1	0	2	15	1,215	1,193	22	
1987 - 1988	21	7	124	181	95	7	1	1	0	0	2	8	446	435	12	
1988 - 1989	127	87	174	116	59	11	3	2	2	2	13	18	613	574	39	
1989 - 1990	131	142	215	343	146	21	14	13	11	11	4	20	1,072	998	73	
1990 - 1991	284	385	445	384	124	16	8	7	5	4	0	3	1,665	1,638	27	
1991 - 1992	9	30	98	325	60	8	0	0	0	0	0	9	541	531	9	
1992 - 1993	107	107	412	426	33	5	4	1	0	0	5	23	1,123	1,090	33	
1993 - 1994	158	353	156	140	16	3	3	2	1	1	3	15	852	826	26	
1994 - 1995	295	340	348	477	199	14	8	5	2	3	3	14	1,707	1,672	34	
1995 - 1996	71	202	718	421	28	2	0	0	2	0	5	32	1,480	1,441	39	
1996 - 1997	108	84	146	338	374	39	7	4	7	3	3	21	1,133	1,089	44	
mean (1987 - 1997)	131	174	284	315	113	12	5	4	3	2	4	16	1,063	1,029	34	
1997 - 1998	37	151	387	808	61	6	4	2	1	2	1	1	1,461	1,449	12	
1998 - 1999	26	91	66	452	61	9	4	3	2	1	10	86	811	705	106	
1999 - 2000	230	117	345	480	238	22	4	3	2	2	16	216	1,675	1,432	243	
2000 - 2001	296	449	291	407	109	16	4	3	2	2	3	10	1,591	1,568	24	
2001 - 2002	204	148	696	483	72	12	4	2	2	0	5	18	1,647	1,614	32	
2002 - 2003	357	342	308	832	200	31	10	21	16	4	5	60	2,186	2,070	116	
2003 - 2004	258	104	101	499	127	3	0	0	0	0	2	42	1,136	1,091	44	
2004 - 2005	161	290	589	394	84	0	0	0	0	0	0	14	1,532	1,519	14	
2005 - 2006	160	229	430	601	240	15	2	0	0	0	2	13	1,693	1,675	18	
2006 - 2007	70	209	220	200	170	20	5	1	0	0			895	888	6	
mean (1997 - 2007)	180	213	343	516	136	13	4	4	3	1	5	51	1,463	1,401	61	
Total Mean	153	197	322	412	116	13	4	3	2	2	4	30	1,257	1,212	44	
Wet Year Mean	194	266	460	521	132	13	4	4	3	2	4	36	1,638	1,586	53	
Dry Year Mean	116	134	195	313	101	12	4	2	2	2	4	25	909	870	39	

Station : Na kae **River :** Nam Kam
Station Code : 023303 **Location :** Tambon Na kae Amphoe Na kae Nakhon pa nom Province
Catchment Area (CA) 2,360 km² **Coordinate :** 16-57-18 N 104-30-30 E
Unit : MCM

Year	Wet Season						Dry Season						Total	Wet Season Total	Dry Season Total		
	Jun	July	Aug	Sep	Oct	Nov	Dec	Jan	Feb	Mar	Apr	May					
1967 - 1968	-	-	-	-	-	-	-	-	-	-	-	-	-	-	-	-	
1968 - 1969	-	-	-	-	-	-	-	-	-	-	-	-	-	-	-	-	
1969 - 1970	-	-	-	-	-	-	-	-	-	-	-	-	-	-	-	-	
1970 - 1971	-	-	-	-	-	-	-	-	-	-	-	-	-	-	-	-	
1971 - 1972	-	-	-	-	-	-	-	-	-	-	-	-	-	-	-	-	
1972 - 1973	-	-	-	-	-	-	-	-	3	1	0.4	-	1	-	5	-	
1973 - 1974	18	83	130	181	82	3	1	1	1	1	1	1	1	1	503	497	6
1974 - 1975	38	42	449	508	160	10	2	2	2	2	2	2	2	5	1,223	1,208	15
1975 - 1976	152	232	332	373	156	6	51	9	1	1	1	1	1	2	1,315	1,251	65
1976 - 1977	12	53	90	55	27	20	40	2	1	1	1	2	7	308	256	52	
mean (1967 - 1977)	55	102	250	279	106	10	23	3	1	1	1	1	4	837	803	34	
1977 - 1978	10	28	60	225	9	3	2	2	2	31	14	5	390	336	55		
1978 - 1979	16	29	351	331	208	9	4	2	2	1	1	145	1,098	943	155		
1979 - 1980	277	284	211	171	73	4	2	2	2	2	2	8	1,038	1,021	17		
1980 - 1981	63	62	103	400	166	11	4	3	3	2	3	14	834	805	29		
1981 - 1982	154	237	347	259	129	6	3	2	21	19	15	8	1,199	1,131	68		
1982 - 1983	43	73	167	212	261	101	12	9	6	3	2	3	892	857	35		
1983 - 1984	6	36	112	172	41	4	2	2	1	2	1	5	385	372	14		
1984 - 1985	14	105	406	345	163	55	10	2	1	1	1	7	1,110	1,088	22		
1985 - 1986	24	127	230	148	30	8	3	2	2	22	1	35	633	568	65		
1986 - 1987	83	100	178	228	41	32	3	2	4	2	1	2	677	663	14		
mean (1977 - 1987)	69	108	217	249	112	23	5	3	4	8	4	23	826	778	47		
1987 - 1988	12	101	221	365	198	83	2	1	1	0.4	0.4	7	991	980	12		
1988 - 1989	141	88	331	151	30	6	2	1	1	1	2	5	761	748	13		
1989 - 1990	66	108	183	185	66	30	21	1	1	1	1	1	664	638	26		
1990 - 1991	109	288	447	508	208	39	6	3	2	2	2	2	1,615	1,599	16		
1991 - 1992	42	184	508	511	204	95	2	2	1	2	1	0.3	1,551	1,544	7		
1992 - 1993	44	140	272	385	155	7	2	2	1	1	1	10	1,020	1,004	16		
1993 - 1994	81	240	179	114	17	3	1	1	2	1	1	6	645	633	12		
1994 - 1995	233	306	265	377	169	51	3	1	0.5	1	1	5	1,412	1,401	11		
1995 - 1996	105	158	362	296	9	12	2	2	1	1	3	76	1,026	942	83		
1996 - 1997	65	95	296	449	282	127	13	10	4	3	7	16	1,367	1,314	53		
mean (1987 - 1997)	90	171	306	334	134	45	5	2	1	1	2	13	1,105	1,080	25		

Station : Na kae **River :** Nam Kam
Station Code : 023303 **Location :** Tambon Na kae Amphoe Na kae Nakhon pa nom Province
Catchment Area (CA) 2,360 km² **Coordinate :** 16-57-18 N 104-30-30 E
Unit : MCM

Year	Wet Season						Dry Season						Total	Wet Season Total	Dry Season Total
	Jun	July	Aug	Sep	Oct	Nov	Dec	Jan	Feb	Mar	Apr	May			
1997 - 1998	72	365	453	309	38	40	2	5	2	1	3	20	1,310	1,277	33
1998 - 1999	74	174	21	87	27	4	1	-	-	-	1	59	-	-	-
1999 - 2000	224	162	344	323	194	108	47	-	-	-	-	-	-	-	-
2000 - 2001	-	-	-	-	-	-	-	-	-	-	-	-	-	-	-
2001 - 2002	-	-	-	-	-	-	-	346	329	380	366	321	-	-	-
2002 - 2003	331	395	349	624	299	276	352	84	58	73	69	75	2,984	2,273	711
2003 - 2004	65	79	70	141	57	46	67	-	-	-	-	-	-	-	-
2004 - 2005	-	-	-	-	-	-	-	214	189	163	131	132	-	-	-
2005 - 2006	170	239	478	359	454	136	183	172	150	150	149	148	2,789	1,836	953
2006 - 2007	130	144	140	149	159	124	178	247	213	255	191	184	2,114	845	1,269
mean (1997 - 2007)	152	222	265	285	175	105	119	178	157	170	130	134	2,299	1,558	741
Total Mean	93	153	261	288	133	47	33	37	32	36	30	41	1,138	1,001	137
Wet Year Mean	136	230	369	402	205	83	72	49	41	46	40	42	1,716	1,425	291
Dry Year Mean	60	107	211	233	93	23	7	2	2	4	2	20	763	727	37

Station : Ban Tha Pha **River :** Chi
Station Code : E16A **Location :** Amphoe Muang Khon Kaen Province
Catchment Area (CA) 13,572 km² **Coordinate :** 16-21-14 N 102-48-16 E
Unit : MCM

Year	Wet Season						Dry Season						Total	Wet Season Total	Dry Season Total	
	Jun	July	Aug	Sep	Oct	Nov	Dec	Jan	Feb	Mar	Apr	May				
1967 - 1968	-	-	-	-	-	-	-	-	-	-	-	-	-	-	-	-
1968 - 1969	-	-	-	-	-	-	-	-	-	-	-	-	-	-	-	-
1969 - 1970	-	-	-	-	-	-	-	-	-	-	-	-	-	-	-	-
1970 - 1971	-	-	-	-	-	-	-	-	-	-	-	-	-	-	-	-
1971 - 1972	-	-	-	-	-	-	-	-	-	-	-	-	-	-	-	-
1972 - 1973	-	-	-	-	-	-	-	-	-	-	-	-	-	-	-	-
1973 - 1974	-	-	-	-	-	-	-	-	-	-	-	-	-	-	-	-
1974 - 1975	-	-	-	-	-	-	-	-	-	-	-	-	5	13	-	-
1975 - 1976	75	103	64	219	623	258	43	28	14	5	3	60	1,496	1,342	154	
1976 - 1977	35	43	96	258	776	1,015	148	48	17	5	8	41	2,488	2,222	266	
mean (1967 - 1977)	55	73	80	238	699	637	95	38	15	5	5	38	1,992	1,782	210	
1977 - 1978	52	11	26	489	528	45	40	26	5	1	3	64	1,291	1,151	140	
1978 - 1979	40	566	750	885	2,375	128	39	18	6	6	7	26	4,845	4,743	102	
1979 - 1980	141	73	119	182	428	24	16	6	0	0	4	15	1,008	967	41	
1980 - 1981	230	370	261	687	1,816	332	44	19	8	7	20	19	3,813	3,696	117	
1981 - 1982	23	70	114	68	118	68	19	7	3	1	10	6	506	460	46	
1982 - 1983	28	38	9	510	1,164	479	83	30	12	6	2	6	2,367	2,228	139	
1983 - 1984	40	78	368	359	409	259	52	18	9	5	4	7	1,609	1,514	95	
1984 - 1985	34	54	42	130	397	218	26	13	7	5	5	24	954	875	79	
1985 - 1986	49	93	93	179	443	357	57	19	8	4	8	113	1,424	1,214	209	
1986 - 1987	80	22	62	86	37	28	12	3	1	1	3	11	346	316	31	
mean (1977 - 1987)	72	138	184	357	771	194	39	16	6	4	7	29	1,816	1,716	100	
1987 - 1988	47	33	34	236	678	197	59	19	7	3	9	114	1,435	1,225	210	
1988 - 1989	159	69	37	105	357	375	45	15	4	2	1	6	1,174	1,101	73	
1989 - 1990	60	78	39	86	309	198	30	10	4	6	6	9	835	770	65	
1990 - 1991	73	48	38	97	433	614	64	19	7	4	6	19	1,422	1,302	120	
1991 - 1992	67	72	205	684	1,361	191	39	27	8	3	-	-	-	-	-	
1992 - 1993	-	-	-	-	-	-	-	-	-	-	-	-	-	-	-	-
1993 - 1994	-	-	-	-	-	-	-	-	-	-	-	1	19	-	-	-
1994 - 1995	71	239	173	427	426	34	9	13	15	6	49	55	1,517	1,369	148	
1995 - 1996	74	74	364	1,402	1,174	220	38	47	48	54	65	57	3,618	3,308	310	
1996 - 1997	117	137	123	387	1,311	1,042	139	23	77	75	1	5	3,436	3,116	320	
mean (1987 - 1997)	83	94	126	428	756	359	53	22	21	19	17	36	1,920	1,742	178	

Station : Ban Tha Pha **River :** Chi
Station Code : E16A **Location :** Amphoe Muang Khon Kaen Province
Catchment Area (CA) 13,572 km² **Coordinate :** 16-21-14 N 102-48-16 E
Unit : MCM

Year	Wet Season						Dry Season						Total	Wet Season Total	Dry Season Total	
	Jun	July	Aug	Sep	Oct	Nov	Dec	Jan	Feb	Mar	Apr	May				
1997 - 1998	8	42	45	54	130	21	7	2	0	0	9	11	329	300	29	
1998 - 1999	13	67	103	173	101	39	59	12	5	7	-	-	579	496	83	
1999 - 2000	-	-	-	-	-	-	-	-	-	-	70	371	-	-	-	
2000 - 2001	571	607	478	1,643	1,182	437	40	24	14	11	0	0	5,008	4,919	89	
2001 - 2002	4	26	88	312	303	337	0	0	0	0	0	23	1,091	1,069	23	
2002 - 2003	17	88	1	1,156	1,086	596	0	0	0	0	-	-	-	-	-	
2003 - 2004	-	-	-	-	-	-	-	-	-	-	-	-	-	-	-	-
2004 - 2005	-	-	-	-	-	-	-	-	-	-	-	-	-	-	-	-
2005 - 2006	-	-	-	-	-	-	-	-	-	-	-	-	-	-	-	-
2006 - 2007	-	-	-	-	-	-	-	-	-	-	-	-	-	-	-	-
mean (1997 - 2007)	123	166	143	668	560	286	21	7	4	4	20	101	1,752	1,696	56	
Total Mean	84	124	149	433	718	300	44	18	11	9	12	44	1,852	1,726	126	
Wet Year Mean	156	262	297	825	1,400	522	76	30	26	24	15	22	3,654	3,462	192	
Dry Year Mean	58	69	90	200	357	192	34	13	6	3	8	36	1,066	967	99	

Station : Ban Kok **River :** Chi River
Station Code : 040103 **Location :** Tambon Nong Bua ,Amphoe Kosum Pisai ,Maha Sarakham Province
Catchment Area (CA) 28,500 km² **Coordinate :** 16-21-00 N 102-57-48 E
Unit : MCM

Year	Wet Season						Dry Season						Total	Wet Season Total	Dry Season Total	
	Jun	July	Aug	Sep	Oct	Nov	Dec	Jan	Feb	Mar	Apr	May				
1957 - 1958	-	-	-	-	-	-	-	-	-	-	-	-	-	-	-	-
1958 - 1959	-	-	-	-	-	-	-	-	-	-	-	-	-	-	-	-
1959 - 1960	-	-	-	-	-	-	-	-	-	-	-	-	-	-	-	-
1960 - 1961	-	-	-	-	-	-	-	-	-	-	-	-	-	-	-	-
1961 - 1962	-	-	-	-	-	-	-	-	-	-	-	-	-	-	-	-
1962 - 1963	-	-	-	-	-	-	-	-	-	-	-	-	-	-	-	-
1963 - 1964	-	-	-	-	-	-	-	-	-	-	-	-	-	-	-	-
1964 - 1965	-	-	-	-	-	-	-	-	-	-	-	-	-	-	-	-
1965 - 1966	-	-	-	-	-	-	-	-	13	3	19	81	182	-	-	-
1966 - 1967	424	198	350	1,240	969	382	158	105	43	132	138	167	4,306	3,563	742	
mean (1957 - 1967)	424	198	350	1,240	969	382	158	59	23	75	110	174	4,306	3,563	742	
1967 - 1968	175	158	176	643	999	178	142	151	53	130	140	191	3,136	2,329	808	
1968 - 1969	251	158	200	204	205	100	86	109	52	181	214	223	1,984	1,119	865	
1969 - 1970	197	537	278	1,139	1,534	511	180	119	47	88	89	191	4,910	4,196	714	
1970 - 1971	213	253	349	1,061	897	400	193	177	55	157	173	273	4,200	3,172	1,028	
1971 - 1972	285	559	588	862	1,176	397	195	170	54	89	99	158	4,633	3,867	766	
1972 - 1973	149	163	160	175	504	180	60	41	12	22	20	12	1,496	1,330	166	
1973 - 1974	58	75	91	280	614	84	37	36	35	134	115	230	1,791	1,203	589	
1974 - 1975	262	136	131	183	346	180	60	38	18	63	91	89	1,597	1,237	360	
1975 - 1976	202	241	153	638	1,448	550	168	131	48	135	291	288	4,294	3,233	1,061	
1976 - 1977	187	151	179	397	1,163	1,694	356	175	51	162	224	384	5,124	3,771	1,353	
mean (1967 - 1977)	198	243	231	558	889	427	148	115	43	116	146	204	3,317	2,546	771	
1977 - 1978	237	153	217	1,025	741	194	130	138	40	90	147	205	3,318	2,568	750	
1978 - 1979	225	935	1,483	1,572	2,612	447	236	142	53	148	144	214	8,211	7,274	937	
1979 - 1980	633	720	775	525	572	66	74	19	5	35	34	79	3,537	3,291	246	
1980 - 1981	620	1,154	979	1,645	2,469	735	209	151	70	308	488	259	9,085	7,600	1,485	
1981 - 1982	215	310	249	177	243	147	57	31	12	43	28	39	1,552	1,341	211	
1982 - 1983	58	59	52	809	1,407	521	125	74	49	105	132	190	3,582	2,906	675	
1983 - 1984	319	408	1,198	1,169	1,093	478	136	72	53	118	195	234	5,473	4,665	808	
1984 - 1985	163	176	269	410	615	633	63	36	10	53	48	83	2,559	2,266	293	
1985 - 1986	82	153	220	317	467	433	61	24	11	28	32	218	2,045	1,673	373	
1986 - 1987	312	93	214	259	99	72	17	16	6	16	23	34	1,160	1,049	111	
mean (1977 - 1987)	286	416	566	791	1,032	373	111	70	31	94	127	156	4,052	3,463	589	

Station : Ban Kok **River :** Chi River
Station Code : 040103 **Location :** Tambon Nong Bua ,Amphoe Kosum Pisai ,Maha Sarakham Province
Catchment Area (CA) 28,500 km² **Coordinate :** 16-21-00 N 102-57-48 E
Unit : MCM

Year	Wet Season						Dry Season						Total	Wet Season Total	Dry Season Total
	Jun	July	Aug	Sep	Oct	Nov	Dec	Jan	Feb	Mar	Apr	May			
1987 - 1988	81	38	167	339	991	226	77	50	21	52	75	228	2,345	1,843	502
1988 - 1989	462	229	227	210	605	671	190	74	24	77	84	138	2,992	2,404	587
1989 - 1990	243	288	224	268	556	252	89	52	25	87	71	102	2,258	1,831	427
1990 - 1991	311	341	222	440	1,262	1,333	287	118	32	93	82	165	4,687	3,909	778
1991 - 1992	186	166	594	1,407	2,023	528	204	159	41	97	82	169	5,655	4,904	751
1992 - 1993	247	177	427	516	438	111	44	39	17	58	67	57	2,198	1,915	283
1993 - 1994	60	47	35	314	179	24	18	10	3	9	7	29	735	660	75
1994 - 1995	85	251	190	640	483	77	32	17	5	7	7	22	1,818	1,727	91
1995 - 1996	94	170	994	1,729	1,498	322	71	45	18	74	77	270	5,362	4,808	554
1996 - 1997	367	274	171	928	1,607	1,438	460	78	30	135	262	357	6,108	4,786	1,322
mean (1987 - 1997)	214	198	325	679	964	498	147	64	22	69	81	154	3,416	2,879	537
1997 - 1998	252	154	152	306	298	64	12	15	7	17	37	18	1,332	1,226	106
1998 - 1999	23	135	227	363	217	67	41	15	5	39	65	290	1,486	1,032	454
1999 - 2000	277	381	194	556	455	716	118	44	34	116	223	827	3,942	2,580	1,362
2000 - 2001	1,226	1,458	1,035	1,661	1,351	499	118	65	27	107	136	148	7,833	7,231	602
2001 - 2002	227	138	787	1,264	1,026	1,218	306	154	48	126	109	266	5,669	4,659	1,010
2002 - 2003	331	111	203	1,641	1,887	1,123	241	137	45	175	296	83	6,273	5,296	977
2003 - 2004	270	255	491	1,436	806	160	79	109	39	62	79	88	3,874	3,418	456
2004 - 2005	362	489	1,013	572	184	64	31	53	16	44	57	62	2,946	2,683	263
2005 - 2006	52	115	112	463	382	279	83	25	8	17	21	53	1,610	1,403	206
2006 - 2007	88	160	225	437	1,354	636	96	65	20	77	81	173	3,411	2,899	512
mean (1997 - 2007)	311	340	444	870	796	483	112	68	25	78	110	201	3,837	3,243	595
Total Mean	256	297	390	737	921	444	130	78	30	89	116	178	3,671	3,046	626
Wet Year Mean	554	786	774	1,489	1,985	848	253	114	45	175	265	212	7,502	6,437	1,064
Dry Year Mean	215	229	337	633	774	387	113	75	28	79	96	174	3,139	2,574	565

Station : Ban Mueang Lan, Chang han **River :** Chi
Station Code : E66A **Location :** Roi Et
Catchment Area (CA) 32,190 km² **Coordinate** 16-12-13 N 103-31-27 E
Unit : MCM

Year	Wet Season						Dry Season						Total	Wet Season Total	Dry Season Total
	Jun	July	Aug	Sep	Oct	Nov	Dec	Jan	Feb	Mar	Apr	May			
1997 - 1998	-	-	-	-	-	-	-	-	-	-	-	-	-	-	-
1998 - 1999	-	-	-	-	-	-	-	-	-	-	0	229	-	-	-
1999 - 2000	92	462	177	532	567	785	123	67	102	155	314	1053	4,429	2,615	1,814
2000 - 2001	1655	2005	1594	2134	2213	734	113	80	79	133	164	177	11,082	10,336	746
2001 - 2002	307	258	834	1435	1267	1505	310	152	112	130	144	270	6,723	5,605	1,118
2002 - 2003	334	162	387	2159	2649	1855	344	138	113	178	291	86	8,696	7,547	1,149
2003 - 2004	299	309	525	1432	1114	194	65	133	109	73	80	189	4,523	3,874	649
2004 - 2005	424	501	1387	826	189	88	36	68	23	30	61	32	3,664	3,414	250
2005 - 2006	39	123	160	576	428	258	121	89	46	55	34	30	1,960	1,585	375
2006 - 2007	66	194	243	454	1517	818	42	39	20	45	96	204	3,738	3,291	446
mean (1997 - 2007)	402	502	663	1,193	1,243	780	144	96	76	100	131	252	5,602	4,783	818
Total Mean	402	502	663	1,193	1,243	780	144	96	76	100	131	252	5,602	4,783	818
Wet Year Mean	765	808	938	1,909	2,043	1,365	256	123	101	147	200	178	8,834	7,829	1,004
Dry Year Mean	184	318	498	764	763	429	77	79	60	71	117	302	3,663	2,956	707

Station : Kamela Sai **River :** Lam Pao
Station Code : 041901 **Location :** Tambon Amphoe Kamala Sai Kalasin Province
Catchment Area (CA) 8,215 km² **Coordinate** 16-20-18 N 103-34-48 E
Unit : MCM

Year	Wet Season						Dry Season						Total	Wet Season Total	Dry Season Total
	Jun	July	Aug	Sep	Oct	Nov	Dec	Jan	Feb	Mar	Apr	May			
1977 - 1978	-	-	-	-	-	-	-	-	-	-	-	-	-	-	-
1978 - 1979	-	-	-	-	-	-	-	-	-	-	-	-	-	-	-
1979 - 1980	-	-	-	-	-	-	-	-	-	-	-	-	-	-	-
1980 - 1981	-	-	-	-	-	-	-	-	-	-	-	-	-	-	-
1981 - 1982	-	-	-	-	-	-	-	-	-	-	-	-	-	-	-
1982 - 1983	-	-	-	-	-	-	-	-	-	-	-	-	-	-	-
1983 - 1984	-	-	-	-	-	-	-	117	22	20	46	131	-	-	-
1984 - 1985	92	58	131	253	277	157	72	45	88	111	120	140	1,544	968	576
1985 - 1986	126	105	85	112	128	30	4	28	76	74	44	45	856	586	270
1986 - 1987	157	219	274	417	170	28	13	44	48	94	95	87	1,646	1,265	381
mean (1977 - 1987)	125	127	163	261	191	72	30	58	58	75	76	101	1,349	940	409
1987 - 1988	45	61	140	385	361	101	32	21	29	65	75	135	1,451	1,093	358
1988 - 1989	245	256	261	127	142	32	7	16	9	9	8	9	1,120	1,063	58
1989 - 1990	13	26	106	211	356	145	40	21	43	70	43	13	1,086	856	230
1990 - 1991	18	140	288	875	442	192	50	125	88	100	80	56	2,455	1,955	500
1991 - 1992	41	50	172	476	416	106	29	43	31	67	112	63	1,606	1,261	344
1992 - 1993	69	213	333	311	119	49	29	53	54	59	57	32	1,380	1,095	285
1993 - 1994	34	85	96	128	62	37	4	2	4	12	9	11	486	443	43
1994 - 1995	18	32	85	237	174	55	24	32	52	88	75	62	933	601	332
1995 - 1996	74	115	356	460	160	69	37	57	76	82	63	45	1,596	1,235	361
1996 - 1997	87	221	124	228	252	210	164	103	116	90	121	123	1,839	1,122	717
mean (1987 - 1997)	64	120	196	344	248	100	42	47	50	64	64	55	1,395	1,072	323
1997 - 1998	110	190	303	346	188	81	63	56	47	51	38	25	1,497	1,218	280
1998 - 1999	82	143	110	150	89	34	19	13	11	18	19	88	775	608	167
1999 - 2000	198	238	251	188	246	79	28	33	65	110	122	144	1,700	1,199	500
2000 - 2001	184	470	655	530	208	114	57	77	82	97	78	70	2,623	2,161	462
2001 - 2002	111	251	746	1,171	487	209	162	84	97	78	66	103	3,564	2,974	590
2002 - 2003	196	201	348	732	596	297	86	100	143	160	101	89	3,050	2,370	680
2003 - 2004	46	76	158	510	330	66	54	68	68	65	63	112	1,615	1,186	429
2004 - 2005	215	337	818	725	189	68	40	41	34	38	35	29	2,567	2,350	217
2005 - 2006	49	239	271	452	727	59	50	82	86	87	114	150	2,365	1,797	568
2006 - 2007	132	118	131	173	536	167	47	58	55	71	63	54	1,607	1,258	349
mean (1997 - 2007)	132	226	379	498	360	117	61	61	69	78	70	86	2,136	1,712	424
Total Mean	102	167	271	400	289	104	48	55	59	72	69	76	1,711	1,333	378
Wet Year Mean	123	266	464	673	414	164	87	87	92	93	85	89	2,638	2,104	533
Dry Year Mean	93	124	187	280	235	77	31	37	47	65	63	66	1,306	996	310

Station : Ban Tha Kai **River :** Chi
Station Code : E18 **Location :** Amphoe Sa Lead Pume Roi Et Province
Catchment Area (CA) 41,187 km² **Coordinate :** 16-01-59 N 103-54-38 E
Unit : MCM

Year	Wet Season						Dry Season						Total	Wet Season Total	Dry Season Total	
	Jun	July	Aug	Sep	Oct	Nov	Dec	Jan	Feb	Mar	Apr	May				
1967 - 1968	-	-	-	-	-	-	-	-	-	-	-	-	-	-	-	-
1968 - 1969	-	-	-	-	-	-	-	-	-	-	-	-	-	-	-	-
1969 - 1970	-	-	-	-	-	-	-	-	-	-	-	-	-	-	-	-
1970 - 1971	-	-	-	-	-	-	-	-	-	-	-	-	-	-	-	-
1971 - 1972	-	-	-	-	-	-	-	-	-	-	-	-	-	-	-	-
1972 - 1973	-	-	-	-	-	-	-	-	-	-	-	-	-	-	-	-
1973 - 1974	-	-	-	-	-	-	-	-	-	-	-	-	-	-	-	-
1974 - 1975	-	-	-	-	-	-	-	-	-	-	-	205	249	-	-	-
1975 - 1976	379	546	439	1,082	1,957	1,184	295	194	186	243	362	420	7,286	5,586	1,701	
1976 - 1977	300	257	378	692	1,289	1,354	542	215	148	171	284	423	6,052	4,269	1,782	
mean (1967 - 1977)	339	401	408	887	1,623	1,269	418	205	167	207	284	364	6,669	4,928	1,741	
1977 - 1978	380	220	393	1,445	951	287	166	189	141	148	156	281	4,757	3,676	1,081	
1978 - 1979	384	1,354	1,676	2,777	5,624	1,345	430	282	248	270	243	356	14,990	13,161	1,829	
1979 - 1980	886	1,060	1,035	786	940	152	82	102	104	88	95	185	5,515	4,859	655	
1980 - 1981	823	1,727	1,274	2,514	3,990	1,658	309	315	313	434	516	430	14,304	11,987	2,317	
1981 - 1982	404	787	1,299	710	511	312	94	99	134	137	174	179	4,842	4,024	817	
1982 - 1983	152	135	66	1,269	2,130	1,023	217	84	152	180	276	341	6,024	4,775	1,249	
1983 - 1984	572	894	1,750	1,685	1,347	716	325	173	126	135	234	391	8,349	6,966	1,384	
1984 - 1985	319	330	581	841	1,115	896	196	84	103	160	194	263	5,081	4,082	999	
1985 - 1986	332	359	506	631	718	588	118	51	114	110	106	327	3,959	3,133	826	
1986 - 1987	690	404	631	1,056	372	185	41	58	54	124	104	115	3,836	3,339	497	
mean (1977 - 1987)	494	727	921	1,372	1,770	716	198	144	149	179	210	287	7,166	6,000	1,165	
1987 - 1988	124	167	318	969	1,349	474	133	74	87	103	146	320	4,264	3,401	863	
1988 - 1989	778	569	529	389	721	740	226	86	66	77	104	159	4,445	3,727	718	
1989 - 1990	280	364	541	636	919	444	133	67	104	201	143	147	3,980	3,185	794	
1990 - 1991	403	738	801	1,649	1,808	1,606	272	208	150	244	169	216	8,266	7,006	1,260	
1991 - 1992	284	308	686	1,936	2,259	1,015	272	232	146	138	198	253	7,727	6,489	1,239	
1992 - 1993	428	565	1,100	1,202	628	216	62	74	76	88	-	-	-	-	-	
1993 - 1994	-	-	-	-	-	-	-	-	-	-	16	39	-	-	-	
1994 - 1995	120	254	273	1,111	850	162	61	53	68	97	92	108	3,247	2,769	479	
1995 - 1996	183	445	1,312	1,749	1,868	487	111	95	110	116	127	315	6,917	6,044	873	
1996 - 1997	452	550	329	1,097	1,808	1,751	816	240	171	143	283	280	7,920	5,986	1,934	
mean (1987 - 1997)	339	440	654	1,193	1,357	766	232	126	109	134	142	204	5,846	4,826	1,020	

Station : Ban Tha Kai **River :** Chi
Station Code : E18 **Location :** Amphoe Sa Lead Pume Roi Et Province
Catchment Area (CA) 41,187 km² **Coordinate :** 16-01-59 N 103-54-38 E
Unit : MCM

Year	Wet Season						Dry Season						Total	Wet Season Total	Dry Season Total
	Jun	July	Aug	Sep	Oct	Nov	Dec	Jan	Feb	Mar	Apr	May			
1997 - 1998	265	376	580	821	455	164	55	49	77	101	106	60	3,108	2,660	448
1998 - 1999	113	350	341	640	292	112	49	14	8	14	109	368	2,411	1,849	562
1999 - 2000	491	691	498	743	889	819	191	101	170	256	397	1,056	6,300	4,130	2,169
2000 - 2001	1,561	2,278	2,230	2,373	2,281	884	168	156	162	230	241	277	12,840	11,607	1,233
2001 - 2002	622	689	1,842	4,439	2,318	1,725	517	247	216	224	221	354	13,412	11,634	1,778
2002 - 2003	570	385	873	2,865	3,370	2,065	464	202	218	311	363	157	11,842	10,128	1,714
2003 - 2004	311	358	656	1,818	1,517	260	97	179	185	137	158	360	6,036	4,920	1,117
2004 - 2005	731	936	2,625	1,780	446	138	41	70	57	69	99	120	7,112	6,656	456
2005 - 2006	146	456	716	1,229	1,175	351	114	57	45	64	77	110	4,540	4,074	467
2006 - 2007	269	429	583	824	2,002	1,192	197	104	57	95	108	229	6,089	5,299	790
mean (1997 - 2007)	508	695	1,094	1,753	1,475	771	189	118	119	150	188	309	7,369	6,296	1,073
Total Mean	444	612	866	1,412	1,545	784	219	134	129	158	191	278	6,848	5,714	1,134
Wet Year Mean	580	904	1,320	2,162	2,423	1,214	335	201	175	213	255	297	10,080	8,604	1,476
Dry Year Mean	353	420	551	923	1,011	529	151	93	101	126	157	279	4,694	3,787	906

Station : Amphoe Ma-Ha-Cha-Na-Chai River : Chi
 Station Code : E20A Location : Amphoe Ma-Ha-Cha-Na-Chai Yasothon Province
 Catchment Area (CA) 47,800 km² Coordinate 15-31-59 N 104-15-24 E
 Unit : MCM

Year	Wet Season						Dry Season						Total	Wet Season Total	Dry Season Total	
	Jun	July	Aug	Sep	Oct	Nov	Dec	Jan	Feb	Mar	Apr	May				
1967 - 1968	-	-	-	-	-	-	-	-	-	-	-	-	-	-	-	-
1968 - 1969	-	-	-	-	-	-	-	-	-	-	-	-	-	-	-	-
1969 - 1970	-	-	-	-	-	-	-	-	-	-	-	-	-	-	-	-
1970 - 1971	-	-	-	-	-	-	-	-	-	-	-	-	-	-	-	-
1971 - 1972	-	-	-	-	-	-	-	-	-	-	-	-	-	-	-	-
1972 - 1973	-	-	-	-	-	-	-	-	-	-	-	-	-	-	-	-
1973 - 1974	-	-	-	-	-	-	-	-	-	-	-	-	-	-	-	-
1974 - 1975	-	-	-	-	-	-	-	-	-	-	-	177	263	-	-	-
1975 - 1976	637	935	872	1,742	2,441	1,742	344	188	171	228	362	445	10,106	8,368	1,738	
1976 - 1977	333	320	923	1,093	1,692	1,370	769	245	163	182	271	406	7,767	5,731	2,036	
mean (1967 - 1977)	485	627	897	1,418	2,066	1,556	556	216	167	205	270	372	8,937	7,049	1,887	
1977 - 1978	430	244	469	2,507	1,404	320	185	192	147	160	189	331	6,578	5,375	1,204	
1978 - 1979	487	1,863	2,408	3,601	6,978	1,862	392	250	212	233	237	390	18,914	17,199	1,715	
1979 - 1980	994	1,669	1,468	955	1,546	191	83	94	101	77	132	244	7,551	6,822	729	
1980 - 1981	882	2,222	1,651	3,668	4,383	2,690	480	359	348	475	578	570	18,305	15,495	2,810	
1981 - 1982	639	1,369	2,256	1,174	909	450	142	128	152	157	191	196	7,762	6,797	966	
1982 - 1983	252	166	134	1,571	2,906	1,444	290	113	162	210	224	307	7,778	6,472	1,306	
1983 - 1984	538	1,453	1,965	2,453	1,934	838	372	202	134	146	219	376	10,631	9,182	1,449	
1984 - 1985	429	496	960	1,433	1,479	1,074	265	103	101	167	160	249	6,916	5,871	1,045	
1985 - 1986	447	630	1,398	1,141	931	743	157	50	98	93	99	330	6,117	5,290	827	
1986 - 1987	770	453	873	1,524	432	227	62	58	40	104	87	114	4,743	4,278	464	
mean (1977 - 1987)	587	1,056	1,358	2,003	2,290	984	243	155	149	182	212	311	9,530	8,278	1,251	
1987 - 1988	135	228	379	1,306	1,641	590	156	79	85	91	159	332	5,181	4,279	902	
1988 - 1989	1,274	908	787	483	927	896	272	112	87	86	113	170	6,114	5,274	840	
1989 - 1990	413	515	1,194	1,317	1,141	614	183	80	108	230	139	153	6,088	5,195	893	
1990 - 1991	418	878	1,383	2,491	2,257	1,799	412	216	159	182	159	216	10,571	9,227	1,344	
1991 - 1992	319	404	823	3,379	3,139	1,614	267	182	125	106	200	252	10,810	9,678	1,132	
1992 - 1993	553	755	1,842	2,298	1,026	409	77	90	69	79	144	93	7,435	6,883	552	
1993 - 1994	189	277	259	939	461	112	42	14	7	4	7	18	2,330	2,238	91	
1994 - 1995	152	402	408	1,673	1,625	217	73	57	62	82	90	131	4,971	4,476	495	
1995 - 1996	261	768	2,080	2,366	2,252	808	150	107	118	120	129	310	9,469	8,535	934	
1996 - 1997	475	602	394	1,344	2,746	2,021	1,007	212	181	144	284	305	9,717	7,584	2,133	
mean (1987 - 1997)	419	574	955	1,760	1,721	908	264	115	100	112	143	198	7,269	6,337	932	

Station : Amphoe Ma-Ha-Cha-Na-Chai River : Chi
 Station Code : E20A Location : Amphoe Ma-Ha-Cha-Na-Chai Yasothon Province
 Catchment Area (CA) 47,800 km² Coordinate 15-31-59 N 104-15-24 E
 Unit : MCM

Year	Wet Season						Dry Season						Total	Wet Season Total	Dry Season Total
	Jun	July	Aug	Sep	Oct	Nov	Dec	Jan	Feb	Mar	Apr	May			
1997 - 1998	299	596	1,233	1,425	620	224	71	35	23	57	99	53	4,734	4,396	338
1998 - 1999	127	519	381	923	363	132	63	20	4	1	84	424	3,041	2,445	596
1999 - 2000	640	1,005	797	1,104	1,507	978	248	83	133	212	399	1,200	8,306	6,031	2,276
2000 - 2001	1,914	3,740	3,271	3,421	2,950	1,346	199	144	127	220	235	306	17,873	16,641	1,232
2001 - 2002	684	1,317	2,203	5,442	3,300	2,347	760	287	236	212	238	368	17,393	15,293	2,100
2002 - 2003	815	678	1,297	4,295	4,174	2,594	702	226	227	312	419	176	15,914	13,852	2,062
2003 - 2004	344	444	889	2,843	2,406	338	109	176	192	127	157	366	8,391	7,263	1,127
2004 - 2005	804	1,027	4,115	2,886	732	110	47	49	90	89	125	184	10,260	9,675	585
2005 - 2006	210	514	1,444	2,172	2,113	483	147	56	45	68	116	205	7,573	6,936	637
2006 - 2007	299	518	866	1,151	2,403	1,287	73	79	47	123	111	312	7,269	6,523	746
mean (1997 - 2007)	614	1,036	1,649	2,566	2,057	984	242	115	112	142	198	360	10,075	8,906	1,170
Total Mean	536	872	1,294	2,066	2,026	996	269	134	124	149	192	297	8,957	7,791	1,166
Wet Year Mean	686	1,324	1,872	3,091	3,107	1,648	428	202	177	206	266	325	13,330	11,727	1,603
Dry Year Mean	447	601	948	1,451	1,377	605	173	93	91	115	149	282	6,332	5,429	904

Station : Ban tha wha **River :** Mun River
Station Code : 050103 **Location :** Tambon Kra buang nok ,Amphoe Chumpuan Nakhonratchasima Province
Catchment Area (CA) 15100 km² **Coordinate :** 15-22-48 N 102-44-18 E
Unit : MCM

Year	Wet Season						Dry Season						Total	Wet Season Total	Dry Season Total
	Jun	July	Aug	Sep	Oct	Nov	Dec	Jan	Feb	Mar	Apr	May			
1987 - 1988	-	-	-	-	-	-	-	9	2	1	0	38	-	-	-
1988 - 1989	21	17	24	23	259	342	81	15	2	1	1	1	787	686	101
1989 - 1990	3	7	16	33	68	133	43	6	3	3	2	3	320	260	60
1990 - 1991	30	40	38	53	213	537	176	32	10	6	6	0	1,141	911	230
1991 - 1992	9	7	39	281	810	210	19	11	5	3	0	0	1,394	1,356	38
1992 - 1993	0	0	10	116	130	121	35	6	0	0	0	0	418	377	41
1993 - 1994	8	25	15	46	75	29	12	3	0	0	0	0	213	198	15
1994 - 1995	21	50	25	180	120	16	5	14	7	0	0	8	446	412	34
1995 - 1996	40	60	144	397	936	320	36	-	-	-	-	-	-	-	-
1996 - 1997	-	-	-	-	-	-	-	-	-	-	-	-	-	-	-
mean (1987 - 1997)	17	26	39	141	326	214	51	12	4	2	1	6	674	600	74
1997 - 1998	-	-	-	-	-	-	-	1	1	2	2	2	-	-	-
1998 - 1999	2	14	56	84	117	22	22	2	7	4	10	29	369	295	74
1999 - 2000	76	114	17	60	559	759	271	11	4	2	9	36	1,918	1,585	333
2000 - 2001	243	488	282	845	539	442	36	-	-	-	-	-	-	-	-
2001 - 2002	-	-	-	-	-	-	-	22	15	16	14	14	-	-	-
2002 - 2003	12	16	24	391	742	362	70	-	-	-	-	-	-	-	-
2003 - 2004	-	-	-	-	-	-	-	33	28	27	27	32	-	-	-
2004 - 2005	49	81	406	255	185	46	35	21	16	13	11	12	1,130	1,022	108
2005 - 2006	13	22	25	84	154	443	141	17	11	10	8	9	937	741	196
2006 - 2007	16	11	25	93	1017	302	31	25	18	16	14	193	1,761	1,464	297
mean (1997 - 2007)	59	107	119	259	473	339	87	17	13	11	12	41	1,223	1,021	202
Total Mean	36	63	76	196	395	272	68	14	8	7	7	24	903	776	127
Wet Year Mean	34	44	27	145	795	424	107	16	9	7	8	76	1,691	245	37
Dry Year Mean	16	28	68	97	147	188	61	13	6	4	4	7	53	91	16

Station : Ban satuk **River :** Mun River
Station Code : 50105 **Location :** Tambon Sateuk ,Amphoe Sateuk Buri ram Province
Catchment Area (CA) 26800 km² **Coordinate :** 15-18-12 N 103-17-24 E
Unit : MCM

Year	Wet Season						Dry Season						Total	Wet Season Total	Dry Season Total
	Jun	July	Aug	Sep	Oct	Nov	Dec	Jan	Feb	Mar	Apr	May			
1977 - 1978	-	-	-	-	-	-	-	-	-	-	-	-	-	-	-
1978 - 1979	-	-	-	-	-	-	-	14	4	2	2	59	-	-	-
1979 - 1980	338	282	64	48	382	38	12	6	3	3	1	3	1,180	1,152	28
1980 - 1981	91	339	110	774	1687	973	320	34	10	5	3	6	4,352	3,974	378
1981 - 1982	51	247	359	90	54	66	92	21	11	6	6	5	1,008	867	141
1982 - 1983	6	7	50	1533	837	190	80	21	6	3	4	6	2,743	2,623	120
1983 - 1984	16	55	423	635	2287	1701	487	49	16	8	4	6	5,687	5,117	570
1984 - 1985	133	133	59	256	353	185	52	19	12	10	8	45	1,265	1,119	146
1985 - 1986	52	52	104	289	680	500	127	24	12	11	11	14	1,876	1,677	199
1986 - 1987	14	12	138	360	170	239	42	15	6	5	5	4	1,010	933	77
mean (1977 - 1987)	88	141	163	498	806	487	152	23	9	6	5	16	2,390	2,183	207
1987 - 1988	7	4	3	301	631	242	162	24	11	9	8	35	1,437	1,188	249
1988 - 1989	140	75	79	55	319	561	181	24	8	7	6	7	1,462	1,229	233
1989 - 1990	7	39	24	96	65	144	41	9	4	6	4	4	443	375	68
1990 - 1991	4	5	217	214	432	756	254	30	14	12	12	12	1,962	1,628	334
1991 - 1992	15	20	28	327	1295	526	52	19	8	5	1	0	2,296	2,211	85
1992 - 1993	3	3	49	197	171	137	50	7	3	0	0	1	621	560	61
1993 - 1994	16	124	77	191	158	69	17	24	15	14	14	23	742	635	107
1994 - 1995	48	179	51	303	337	59	31	2	0	0	0	0	1,010	977	33
1995 - 1996	0	134	293	637	1548	569	97	35	19	20	11	15	3,378	3,181	197
1996 - 1997	150	237	48	182	1125	1299	620	-	-	-	-	-	-	-	-
mean (1987 - 1997)	39	82	87	250	608	436	151	19	9	8	6	11	1,483	1,332	152
1997 - 1998	-	-	-	-	-	-	-	10	2	1	1	0	-	-	-
1998 - 1999	1	57	130	229	308	180	122	29	18	17	18	37	1,146	905	241
1999 - 2000	374	232	23	25	483	1108	576	21	13	24	22	119	3,020	2,245	775
2000 - 2001	504	1308	780	1682	703	655	217	-	-	-	-	-	-	-	-
2001 - 2002	-	-	-	-	-	-	-	19	14	10	10	10	-	-	-
2002 - 2003	12	16	26	827	918	612	143	-	-	-	-	-	-	-	-
2003 - 2004	-	-	-	-	-	-	-	28	24	22	19	23	-	-	-
2004 - 2005	68	109	729	462	274	51	40	16	12	11	11	9	1,792	1,693	99
2005 - 2006	10	12	12	202	206	362	240	1	1	1	1	1	1,049	804	245
2006 - 2007	1	1	1	80	1057	642	33	16	8	7	5	109	1,960	1,782	178
mean (1997 - 2007)	139	248	243	501	564	516	196	18	12	12	11	39	1,793	2,210	308
Total Mean	82	147	155	400	659	475	164	20	10	8	7	21	1,884	1,676	207
Wet Year Mean	84	131	155	655	1,356	845	269	30	12	11	8	25	3,579	3,225	354
Dry Year Mean	56	83	131	211	350	264	94	17	9	7	7	19	1,248	1,095	152

Station : Ban Satuk **River :** Mun
Station Code : MGA **Location :** Amphoe Satuk Buri Ram Province
Catchment Area (CA) 28,275 km² **Coordinate :** 15-17-44 N 103-17-51 E
Unit : MCM

Year	Wet Season						Dry Season						Total	Wet Season Total	Dry Season Total	
	Jun	July	Aug	Sep	Oct	Nov	Dec	Jan	Feb	Mar	Apr	May				
1967 - 1968	-	-	-	-	-	-	-	-	-	-	-	-	-	-	-	-
1968 - 1969	-	-	-	-	-	-	-	-	-	-	-	-	-	-	-	-
1969 - 1970	-	-	-	-	-	-	-	-	-	-	-	-	-	-	-	-
1970 - 1971	-	-	-	-	-	-	-	-	-	-	-	-	-	-	-	-
1971 - 1972	-	-	-	-	-	-	-	-	-	-	-	-	-	-	-	-
1972 - 1973	-	-	-	-	-	-	-	-	-	-	-	-	-	-	-	-
1973 - 1974	-	-	-	-	-	-	-	-	-	-	-	-	-	-	-	-
1974 - 1975	-	-	-	-	-	-	-	-	-	-	-	-	10	16	-	-
1975 - 1976	24	88	90	156	713	535	134	37	15	11	2	8	8	1,814	1,606	208
1976 - 1977	6	36	14	374	1142	1242	383	41	14	10	5	6	6	3,272	2,813	459
mean (1967 - 1977)	15	62	52	265	928	888	259	39	14	10	6	10	10	2,543	2,209	333
1977 - 1978	18	18	64	1039	765	125	46	20	7	5	3	15	2126	2,030	96	
1978 - 1979	35	436	356	984	2219	320	59	25	11	10	10	52	4517	4,349	168	
1979 - 1980	305	263	55	42	348	33	11	3	1	1	4	9	1075	1,046	30	
1980 - 1981	86	344	98	759	1775	948	304	44	17	13	8	31	4428	4,011	417	
1981 - 1982	55	229	337	85	50	61	87	20	7	4	1	1	937	818	119	
1982 - 1983	5	15	37	1654	889	203	68	12	3	2	1	7	2894	2,802	92	
1983 - 1984	36	172	403	589	2276	1734	482	59	19	7	6	13	5797	5,211	586	
1984 - 1985	156	165	66	281	356	214	59	16	5	2	5	59	1383	1,237	146	
1985 - 1986	72	82	134	303	690	509	183	23	3	1	8	11	2020	1,791	229	
1986 - 1987	19	14	151	361	172	235	58	17	4	3	3	2	1038	952	86	
mean (1977 - 1987)	79	174	170	610	954	488	136	24	8	5	5	20	2,622	2,425	197	
1987 - 1988	7	21	4	301	668	257	185	24	5	3	6	41	1,523	1,257	265	
1988 - 1989	151	100	87	60	328	616	199	27	4	2	1	3	1,578	1,342	236	
1989 - 1990	4	41	22	90	58	144	41	7	2	3	1	1	415	359	55	
1990 - 1991	6	23	245	239	425	758	299	36	7	3	1	1	2,043	1,697	346	
1991 - 1992	5	41	14	301	1167	506	46	13	6	4	1	1	2,104	2,034	70	
1992 - 1993	6	7	38	179	159	133	48	6	3	2	1	2	583	522	61	
1993 - 1994	6	126	60	193	141	52	7	2	0	0	0	2	590	578	12	
1994 - 1995	17	146	16	277	321	24	4	1	0	0	0	7	812	801	12	
1995 - 1996	10	135	330	571	1348	581	88	14	4	4	8	11	3,105	2,976	129	
1996 - 1997	89	220	23	116	1340	1530	610	44	14	9	12	20	4,027	3,319	708	
mean (1987 - 1997)	30	86	84	233	596	460	153	17	4	3	3	9	1,678	1,488	190	

Station : Ban Satuk **River :** Mun
Station Code : MGA **Location :** Amphoe Satuk Buri Ram Province
Catchment Area (CA) 28,275 km² **Coordinate :** 15-17-44 N 103-17-51 E
Unit : MCM

Year	Wet Season						Dry Season						Total	Wet Season Total	Dry Season Total	
	Jun	July	Aug	Sep	Oct	Nov	Dec	Jan	Feb	Mar	Apr	May				
1997 - 1998	18	99	133	73	367	130	29	10	5	3	-	-	-	-	-	-
1998 - 1999	-	-	-	-	-	-	-	-	-	-	-	10	31	-	-	-
1999 - 2000	244	361	74	81	520	918	591	41	8	2	11	129	2,979	2,198	782	
2000 - 2001	490	1130	772	1989	919	864	195	20	2	0	-	-	-	-	-	-
2001 - 2002	-	-	-	-	-	-	-	-	-	-	0	0	0	-	-	-
2002 - 2003	2	28	10	1176	1239	707	141	16	0	0	25	41	3,386	3,162	224	
2003 - 2004	43	28	39	401	410	332	48	17	14	7	2	15	1,357	1,254	103	
2004 - 2005	94	113	800	504	347	49	36	5	1	0	0	0	1,949	1,907	42	
2005 - 2006	1	8	2	236	236	440	300	26	5	0	0	0	1,253	923	331	
2006 - 2007	0	51	0	145	1594	839	57	0	0	0	9	108	2,803	2,629	174	
mean (1997 - 2007)	112	227	229	576	704	535	175	17	4	2	7	40	2,288	2,012	276	
Total Mean	67	151	149	452	766	501	160	21	6	4	5	21	2,207	1,986	221	
Wet Year Mean	51	180	135	645	1,434	902	278	30	9	6	10	42	3,721	3,347	374	
Dry Year Mean	55	84	124	281	409	279	100	17	5	3	2	10	1,367	1,231	136	

Station : M26 **River :** Mun River
Station Code : M26 **Location :** Surin Province
Catchment Area (CA) 2927 km² **Coordinate :** 14-54-03 N 103-24-21 E
Unit : MCM

Year	Wet Season						Dry Season						Total	Wet Season Total	Dry Season Total	
	Jun	July	Aug	Sep	Oct	Nov	Dec	Jan	Feb	Mar	Apr	May				
1967 - 1968	-	-	-	-	-	-	-	-	-	-	-	-	-	-	-	-
1968 - 1969	-	-	-	-	-	-	-	-	-	-	-	-	-	-	-	-
1969 - 1970	-	-	-	-	-	-	-	-	-	-	-	-	-	-	-	-
1970 - 1971	-	-	-	-	-	-	-	-	-	-	-	-	-	-	-	-
1971 - 1972	-	-	-	-	-	-	-	-	-	-	-	-	-	-	-	-
1972 - 1973	-	-	-	-	-	-	-	-	-	-	-	-	-	-	-	-
1973 - 1974	-	-	-	-	-	-	-	-	-	-	-	-	-	-	-	-
1974 - 1975	-	-	-	-	-	-	-	-	-	-	-	-	0	4	-	-
1975 - 1976	2	78	19	71	58	35	7	1	0	0	0	0	1	272	263	9
1976 - 1977	2	19	12	322	320	260	4	0	0	0	0	0	1	940	156	1
mean (1967 - 1977)	2	49	16	197	189	148	6	1	0	0	0	0	2	606	209	5
1977 - 1978	4	1	17	198	56	1	1	0	0	0	0	0	7	285	277	8
1978 - 1979	9	88	264	328	373	18	3	1	0	0	0	0	3	1,087	1,080	7
1979 - 1980	53	284	47	59	197	2	0	0	0	0	0	1	4	647	642	5
1980 - 1981	21	121	61	249	337	197	15	2	1	1	1	1	4	1,010	986	24
1981 - 1982	3	56	46	42	71	49	11	1	1	1	1	3	3	287	267	20
1982 - 1983	11	12	55	726	121	44	10	2	2	1	1	2	5	990	969	21
1983 - 1984	6	77	230	53	866	141	15	4	2	1	1	2	2	1,399	1,373	26
1984 - 1985	6	7	22	211	131	17	5	2	1	1	1	1	8	412	394	18
1985 - 1986	22	34	47	155	104	36	21	2	1	1	1	1	6	430	398	32
1986 - 1987	9	23	157	272	82	20	2	1	1	1	1	0	0	568	563	5
mean (1977 - 1987)	14	70	95	229	234	53	8	2	1	1	1	1	4	712	695	17
1987 - 1988	1	1	1	71	56	28	11	1	1	1	1	0	2	174	158	16
1988 - 1989	24	30	26	8	112	34	3	1	0	0	0	0	1	239	234	5
1989 - 1990	6	9	51	228	76	20	3	1	1	1	1	1	2	399	390	9
1990 - 1991	3	7	107	76	180	72	7	1	0	0	0	1	1	455	445	10
1991 - 1992	3	6	12	191	467	14	3	2	1	1	1	2	2	704	693	11
1992 - 1993	21	6	75	449	187	21	3	2	2	3	1	3	3	773	759	14
1993 - 1994	15	20	160	71	29	38	1	1	1	0	0	0	1	337	333	4
1994 - 1995	12	30	5	217	126	7	2	1	0	0	1	1	1	402	397	5
1995 - 1996	1	7	13	202	372	31	4	1	1	1	1	0	3	636	626	10
1996 - 1997	20	7	3	71	258	240	12	1	0	1	1	0	4	617	599	18
mean (1987 - 1997)	11	12	45	158	186	51	5	1	1	1	1	1	2	474	463	10

Station : M26 **River :** Mun River
Station Code : M26 **Location :** Surin Province
Catchment Area (CA) 2927 km² **Coordinate :** 14-54-03 N 103-24-21 E
Unit : MCM

Year	Wet Season						Dry Season						Total	Wet Season Total	Dry Season Total	
	Jun	July	Aug	Sep	Oct	Nov	Dec	Jan	Feb	Mar	Apr	May				
1997 - 1998	3	35	93	87	245	26	2	1	1	2	1	1	1	497	489	8
1998 - 1999	3	3	35	60	71	49	67	1	0	0	2	16	2	307	221	86
1999 - 2000	140	142	37	54	155	209	16	1	0	0	61	64	879	737	142	
2000 - 2001	190	295	366	213	218	45	18	16	14	15	6	13	1,409	1,327	82	
2001 - 2002	32	40	38	181	54	210	4	1	0	0	1	2	563	555	8	
2002 - 2003	26	14	46	655	334	85	8	2	2	4	1	1	1,178	1,160	18	
2003 - 2004	4	10	3	71	249	27	1	0	0	0	2	31	398	364	34	
2004 - 2005	66	130	484	310	54	2	1	1	0	0	0	0	1,048	1,046	2	
2005 - 2006	1	9	8	111	73	116	4	0	0	0	12	9	343	318	25	
2006 - 2007	9	11	168	69	304	15	4	9	3	1	1	71	665	576	89	
mean (1997 - 2007)	47	69	128	181	176	78	13	3	2	2	9	21	729	679	49	
Total Mean	23	50	85	190	198	66	8	2	1	1	3	8	636	587	24	
Wet Year Mean	40	87	134	277	308	77	7	3	2	2	6	13	955	922	33	
Dry Year Mean	9	22	47	122	113	57	9	1	0	1	1	5	388	370	18	

Station : Ban ku pra go na River : Lam siao yai
 Station Code : 052001 Location : Tambon Tung kula Amphoe Suwan na bhum Roi et Province
 Catchment Area (CA) 3230 km² Coordinate : 15-34-12 N 103-49-24 E
 Unit : MCM

Year	Wet Season						Dry Season						Total	Wet Season Total	Dry Season Total	
	Jun	July	Aug	Sep	Oct	Nov	Dec	Jan	Feb	Mar	Apr	May				
1977 - 1978	-	-	-	-	-	-	-	-	-	-	-	-	-	-	-	-
1978 - 1979	-	-	-	-	-	-	-	-	-	-	-	-	-	-	-	-
1979 - 1980	-	-	-	-	-	-	-	-	-	-	-	-	-	-	-	-
1980 - 1981	-	-	-	-	-	-	-	-	-	-	-	-	-	-	-	-
1981 - 1982	-	-	-	-	-	-	-	-	-	-	-	-	-	-	-	-
1982 - 1983	-	-	-	-	-	-	-	-	33	22	16	6	17	-	-	-
1983 - 1984	28	75	288	112	201	60	24	4	1	0	0	7	800	764	36	
1984 - 1985	18	22	13	35	129	58	8	10	4	3	0	10	310	275	35	
1985 - 1986	28	44	271	89	49	50	16	-	-	-	-	-	-	-	-	-
1986 - 1987	-	-	-	-	-	-	-	4.12	2.47	1.87	1.34	0.66	-	-	-	-
mean (1977 - 1987)	25	47	191	79	126	56	16	13	7	5	2	9	555	520	36	
1987 - 1988	1	2	3	90	109	16	11	1	0	0	0	0	233	221	12	
1988 - 1989	57	62	16	12	40	36	8	6	0	0	0	0	237	223	14	
1989 - 1990	7	44	141	97	24	15	8	3	1	1	0	0	341	328	13	
1990 - 1991	0	1	75	188	246	122	36	20	12	8	5	3	716	632	84	
1991 - 1992	2	3	6	84	266	34	21	13	6	2	0	0	437	395	42	
1992 - 1993	15	19	64	177	103	29	18	15	7	4	2	4	457	407	50	
1993 - 1994	22	35	26	144	64	21	13	3	2	1	0	5	336	312	24	
1994 - 1995	20	33	18	85	39	15	11	0	0	0	0	0	221	210	11	
1995 - 1996	3	95	203	139	53	38	3	12	3	0	0	0	549	531	18	
1996 - 1997	3	4	2	53	153	91	28	5	4	2	0	0	345	306	39	
mean (1987 - 1997)	13	30	55	107	110	42	16	8	4	2	1	1	387	357	31	
1997 - 1998	0	53	103	47	40	11	5	3	0	0	0	0	262	254	8	
1998 - 1999	0	2	3	6	5	9	6	3	1	0	0	5	40	25	15	
1999 - 2000	36	38	16	11	61	59	10	16	8	4	2	22	283	221	62	
2000 - 2001	144	349	163	376	84	41	20	-	-	-	-	-	-	-	-	-
2001 - 2002	-	-	-	-	-	-	-	41	36	39	37	35	-	-	-	-
2002 - 2003	33	39	113	476	247	111	46	-	-	-	-	-	-	-	-	-
2003 - 2004	-	-	-	-	-	-	-	25	19	13	7	7	-	-	-	-
2004 - 2005	19	85	282	61	34	23	13	9	5	3	2	2	538	504	34	
2005 - 2006	2	3	36	225	106	42	32	33	21	14	10	9	533	414	119	
2006 - 2007	14	17	19	35	220	62	39	38	22	16	9	8	499	367	132	
mean (1997 - 2007)	31	73	92	155	100	45	21	21	14	11	8	11	359	298	62	
Total Mean	22	49	89	121	108	45	18	14	8	6	4	6	397	355	42	
Wet Year Mean	14	38	182	150	224	91	30	12	7	4	3	5	758	688	60	
Dry Year Mean	14	32	59	81	90	35	15	11	5	3	2	4	351	312	39	

Station : Ban Huay tab tan River : Huay Tab tan
 Station Code : 052101 Location : Tambon Huay tab tan Amphoe Huay tab tan Sri sa khet Province
 Catchment Area (CA) 2030 km² Coordinate : 15-02-48 N 104-01-24 E
 Unit : MCM

Year	Wet Season						Dry Season						Total	Wet Season Total	Dry Season Total	
	Jun	July	Aug	Sep	Oct	Nov	Dec	Jan	Feb	Mar	Apr	May				
1997 - 1998	-	-	-	-	-	-	-	-	-	-	-	-	-	-	-	-
1998 - 1999	-	-	-	-	-	-	-	-	-	-	-	-	-	-	-	-
1999 - 2000	-	-	-	-	-	-	-	-	-	-	-	-	-	-	-	-
2000 - 2001	-	-	-	-	-	-	-	-	-	-	-	-	-	-	-	-
2001 - 2002	-	-	-	-	-	-	-	-	-	-	-	-	-	-	-	-
2002 - 2003	-	-	-	-	-	-	-	-	-	-	-	-	-	-	-	-
2003 - 2004	-	-	-	-	-	-	-	3	2	3	2	3	-	-	-	-
2004 - 2005	219	61	592	169	20	3	2	2	0	0	0	0	1,068	1,064	4	
2005 - 2006	0	0	13	303	29	24	15	12	10	9	8	4	427	369	58	
2006 - 2007	3	3	118	97	477	16	14	35	31	33	28	49	904	714	190	
mean (1997 - 2007)	74	21	241	190	175	14	10	13	11	11	10	14	800	716	84	
Total Mean	74	21	241	190	175	14	10	13	11	11	10	14	800	716	84	
Wet Year Mean	111	32	355	133	249	10	8	19	16	17	14	25	986	889	97	
Dry Year Mean	0	0	13	303	29	24	15	12	10	9	8	4	427	369	58	