

4-2 Dispatch of Japanese Experts

(1) Assignment of the 1st Year

Expert	Person in Charge	Assigned Period	Belongings
Hiroataka ONISHI	Chief Advisor /Medical education / Pedagogy (1)	2007/12/13 – 12/21 2008/1/21 – 2/10 2008/2/18 – 3/3	University of Tokyo, International Research Center for Medical Education
Chuji KUROIWA	Medical education / Pedagogy (2)	2007/12/4 – 12/9 2008/2/12 – 2/17 2008/2/26 – 3/6	University of Tokyo, Graduate School of Medicine, Dept. of International Health Planning
Shuji NOGUCHI	Training management & evaluation (1)	2007/12/4 – 12/20 2008/1/18 – 2/7	System Science Consultants Inc.
Sakiko YANAGUCHI	Training management & evaluation (2)	2007/12/19– 2008/ 1/19 2008/2/26 – 3/15	System Science Consultants Inc.
Masamine JIMBA	EBM/ Epidemiology	2007/12/12 – 12/16 2007/12/20 – 12/24 2008/1/13 – 1/19 2008/2/21 – 3/4	University of Tokyo, Graduate School of Medicine, Dept. of Community Health
Kiyoshi KITAMURA	Clinical Pathology	2007/12/24– 2008/1/5 2008/2/18 – 2/28	University of Tokyo, International Research Center for Medical Education
Masaru SHIMIZU	Medical Record	2008/2/10 – 2/24	System Science Consultants Inc.
Hiroshi NISHIGORI	Internal Medicine/ Emergency	2008/1/27 – 2/2 2008/3/9 – 3/15	University of Tokyo, International Research Center for Medical Education
Keiko MURAMATSU	Clinical Laboratory	2007/12/9 – 12/29	System Science Consultants Inc.

(2) Assignment of the 2nd Year

Expert	Person in Charge	Assigned Period	Belongings
Hiroataka ONISHI	Chief Advisor /Medical education / Pedagogy (1)	2008/6/3 – 7/8 2008/9/25 – 10/20 2008/11/18 – 12/18 2009/1/15 – 2/10 2009/3/2 – 3/16	University of Tokyo, International Research Center for Medical Education
Takuya ADACHI	Medical education (2)	2008/9/1 – 9/30 2008/10/17 – 11/15 2009/2/15 – 3/16	IMG Inc.
Takeo MORI	Pedagogy (2)/Hospital Management	2008/7/5 – 7/24 2008/8/9 – 8/21 2008/11/2 – 11/18	System Science Consultants Inc.
Keiichi YAMAMOTO	Facility Management	2008/10/26 – 11/4 2009/2/7 – 2/26	System Science Consultants Inc.
Keiko MURAMATSU	Training management & evaluation (1)/ Clinical Laboratory	2008/5/27 – 6/20 2008/9/1 – 9/30 2009/2/15 – 3/16	System Science Consultants Inc.
Sakiko YAMAGUCHI	Training management & evaluation (2)	2008/8/2 – 9/5 2008/10/17 – 11/8 2008/12/7 – 12/27 1009/1/4 – 1/29	System Science Consultants Inc.
Masamine JIMBA	EBM/ Epidemiology	2008/5/27 – 6/10 2008/9/11 – 9/20 2008/11/17 – 11/28 2009/3/7 – 3/16	University of Tokyo, Graduate School of Medicine, Community and Global Health
Kiyoshi KITAMURA	Clinical Pathology	2008/6/11 – 6/25 2008/10/4 – 10/18 2008/12/24– 2009/1/7	University of Tokyo, International Research Center for Medical Education
Makoto TOBE	Medical Record	2008/9/8 – 10/3 2009/2/8 – 3/13	System Science Consultants Inc.
Hiroshi NISHIGORI	Internal Medicine/ Emergency	2008/6/30 – 7/17 2008/8/11 – 8/20 2008/11/3 – 11/16 2009/2/9 – 2/26	University of Tokyo, International Research Center for Medical Education

¥ O 1.8

(3) Assignment of the 3rd Year

Expert	Person in Charge	Assigned Period	Belongings
Hiroataka ONISHI	Chief Advisor /Medical education / Pedagogy (1)	2009/6/3 – 7/2 2009/9/29 – 10/30 2009/12/24 – 2010/1/7 2010/1/26 – 2/19 2010/3/1 – 3/16	University of Tokyo, International Research Center for Medical Education
Akiteru TAKAMURA	Medical education (2)	2009/6/19 – 7/18 2009/11/4 – 11/28 2010/2/18 – 3/14	University of Tokyo, International Research Center for Medical Education
Takeo MORI	Pedagogy (2)/Hospital Management	2009/8/20 – 8/31 2010/2/20 – 3/3	System Science Consultants Inc.
Keiichi YAMAMOTO	Facility Management	2010/2/17 – 2/28	System Science Consultants Inc.
Keiko MURAMATSU	Training management & evaluation (1)/ Clinical Laboratory	2009/5/13 – 6/29 2009/10/25 – 11/11 2010/1/6 – 2/6 2010/2/24 – 3/15	System Science Consultants Inc.
Satoko OKAMOTO	Training management & evaluation (2)	2009/7/8 – 8/12 2009/9/14 – 10/20 2010/1/6 – 2/3	System Science Consultants Inc.
Masamine JIMBA	EBM/ Epidemiology	2009/6/1 – 6/10 2009/9/28 – 10/7 2010/3/4 – 3/14	University of Tokyo, Graduate School of Medicine, Community and Global Health
Kiyoshi KITAMURA	Clinical Pathology / Medical education (3)	2009/6/18 – 7/2 2009/11/12 – 11/26	University of Tokyo, International Research Center for Medical Education
Toshiharu HATA	Medical Record	2009/6/3 – 6/27 2009/11/14 – 12/28 2010/1/13 – 1/31	System Science Consultants Inc.
Keiko YANO	Internal Medicine / Emergency	2010/1/30 – 3/15	University of Tokyo, International Research Center for Medical Education

(4) Assignment of the 4th Year

Expert	Person in Charge	Assigned Period	Belongings
Hiroataka ONISHI	Chief Advisor /Medical education / Pedagogy (1)	2010/6/1-23 2010/6/29-7/9 2010/9/13-27 2010/10/1-30	University of Tokyo, International Research Center for Medical Education
Akiteru TAKAMURA	Medical education (2)	2010/9/14-10/7	University of Tokyo, International Research Center for Medical Education
Keiko MURAMATSU	Training management & evaluation (1)/ Clinical Laboratory	2010/5/11-28 2010/6/22-7/10 2010/10/12-31	System Science Consultants Inc.
Satoko OKAMOTO	Training management & evaluation (2)	2010/5/24-6/13 2010/6/26-8/10 2010/8/24-9/17 2010/10/2-31	System Science Consultants Inc.
Masamine JIMBA	EBM/ Epidemiology	2010/6/28-7/9 2010/10/5-16	University of Tokyo, Graduate School of Medicine, Community and Global Health
Kiyoshi KITAMURA	Clinical Pathology/ Medical education (3)	2010/6/19-7/2 2010/10/6-19	University of Tokyo, International Research Center for Medical Education
Toshiharu HATA	Medical Record	2010/6/1-7/7 2010/8/10-27	System Science Consultants Inc.
Keiko YANO	Internal Medicine/ Emergency	2010/10/2-31	University of Tokyo, International Research Center for Medical Education

4 (2)

8

4-3 Counterpart Training

Name of Trainees	Position	Training Field	Period of Training	Training Institute
Dr. Sisomphone TANDAVOUNG	Deputy Chief, Outpatient Department, Setthathirath Hospital	Medical Education	2008/4/9 ~5/1	University of Tokyo, International Research Center for Medical Education
Dr. Bounmy SOMSAMOUTH	Deputy Chief, Internal Medicine I, Setthathirath Hospital	Medical Education	2008/4/9 ~5/1	University of Tokyo, International Research Center for Medical Education
Dr. Ketsomsouk BOUPHAVANH	Academic Affair Department, UHS	Medical Education	2008/4/9 ~5/1	University of Tokyo, International Research Center for Medical Education
Dr. Oua PHIMMASARN	Faculty of Graduate Sciences, UHS	Medical Education	2008/4/9 ~5/1	University of Tokyo, International Research Center for Medical Education

Handwritten marks and signatures at the bottom right of the page.

4-4 Provision of Equipment and Materials

(1/2)

No.	Name	Purpose	Main Specification	Quantity	Procurement Country
Clinical Training Center					
Training Simulator					
1	CPR model (Adult)	Training of artificial respiration and cardiac compression	full body, face mask, mannequin cleaner	4	Thailand
2	Airway Management Trainer	Training of airway management, tracheal cannula and bronchoscopy examination	head to thorax adult model	2	Thailand
3	Midwifery Practice Model	Training of conduct of labor and palpation	abdominal to external genitalia part model, fetal model	2	Thailand
4	Vital Sign Infant Model	Training of detection of cardiac sound and sphygmopalpation	Newborn full body (approx. 50cm), control panel of cardiac sound and pulse	2	Thailand
5	Male Catheterization Simulator	Learning of male urethral catheterization	amputation model for male lower half of the body	2	Thailand
6	Female Catheterization Simulator	Learning of female urethral catheterization	amputation model for female lower half of the body	2	Thailand
7	Simulator Intravenous Arm	Practice of blood sampling and intravenous injection	arm model, exchangable pad, blood circulation pump	2	Thailand
8	Eye Examination Simulator	Practice of hemorrhage in the eye ground	adult head full-size model, exercise films for funduscopy	2	Thailand
9	Ear Examination simulator	Practice of otoscopy	adult head full-size model, exercise films for tympanum	2	Thailand
10	Suture Practice Simulator	Practice of trauma suture	skin model for suture	12	Thailand
Clinical Training Instrument					
11	Minor Surgical Instrument Set	Equipment for the practice of minor surgery (suture and disinfecting)	Forceps, suture holder, scissors, handle scalpel, etc., in total 8 items, stainless	4	Laos
12	Instrumental Tray	Equipment for instrument preparation and sanitation control	material: stainless, catheter tray, size: approx. W320xD80H50mm	8	Laos
13	Instrument Set for Treatment of Ob/ Gyn	Practice for Ob/Gyn treatment such as detection of pregnancy, delivery and examination	vaginal retractor speculum, plastic surgery scalpel, tissue forcep, forceps (no hook), lectructor, suture needle container, forcep case for autoclave, pelvimeter, etc. 23 items, stainless	2	Laos
14	Stethoscope, adult	Auscultation of adult cardiac sound and cardiac murmur	material: stainless, for adult, dual type (bell or diaphragm type) chestpiece: aluminum or stainless	60	Laos
15	Sphygmomanometer, newborn/ infant	Auscultation of infant cardiac sound and cardiac murmur	material: stainless, for infant, dual type (bell or diaphragm type) chestpiece: aluminum or stainless	20	Thailand
16	Electric Stethoscope System	Lecturer can allow students or colleagues to hear the patient's body sounds at the time the exam is performed	Master Elite Plus, Distributor & 5 Headsets	2	Thailand
17	Universal Diagnostic Set	Practice of ENT consultation and treatment, and general medical examination	pharyngoscope, funduscope, pen light, head mirror, aural speculum, nasal speculum, tone depressor, etc. total item 9, stainless	2	Thailand
18	Sphygmomanometer, Table Top Type	Practice for sphygmomanometry	table top type, mercury type, bulb with valve, adult and child cuff with latex bag	40	Laos
19	Clinical Thermometer	Practice for body temperature to diagnose	digital type, with case	40	Laos
20	Timer/ Stop watch	Practice for pulsation and respiration suture	digital type, lap timer, 60 minutes measurement	20	Laos
21	Hammer, Taylor Type	Practice of neuroreflex	Taylor type, material: handle- stainless or equivalent, head-rubber	20	Laos
22	Intubation Set, adult	Training of maintenance of a patent airway for adult	pharyngoscope blade (adult), cuff syringe, intubation tube, bite block, hemostasis forceps, etc.	1	Thailand
23	Intubation Set, infant	Training of maintenance of a patent airway for infant	pharyngoscope blade (infant), cuff syringe, intubation tube, bite block, hemostasis forceps, etc.	1	Thailand

No.	Name	Purpose	Main Specification	Quantity	Procurement Country
Medical Furniture					
24	IV Pole	Practice of intravenous drip infusion	height: 90-200 cm, material:stainless, with wheels attached, hook: 3-4	8	Laos
25	Negatoscope (Stand Type)	Training of reading X-ray film and diagnosis	stand type with wheels attached film capacity:4 films (1 film size:14*17) 2 leps Fluorescent lamp: 15W	8	Thailand
26	Instrument Pushcart/Trolley	Organizing equipment for clinical training	material: stainless steel or equivalent, size:W450xD300xH800mm shelf: 2 shelves with guard rail, drawers: 2 or more, on casters	8	Thailand
27	Folding Meeting Table	Table for practice of blood collection and suture	size:approx. W1800xD800xH715mm, frame: steel pipe, on casters, folding legs	8	Laos
28	Round Chair with Caster	Chairs for clinical training such as consultaion and palpation	round chair without armrest and backrest, 360 degree round, height adjuster, on casters	100	Laos
29	Examining Table	Practicice of clinical training such as consultaion and palpation	size:approx. L180xW60xH50cm material: metal and urethane foam matress (if possible, legs are foldable)	8	Laos
30	Cabinet	Storage for equipment and simulators	size: approx.H180xW120xD40cm, shelf: 2 shelves or more, material: steel, with lock key	4	Laos
31	White Board (Wall Hung Type)	For lecture and conference	size: appr. W1700xH850mm, magnet correspondence, with marker pen (black, red, blue) each 10pcs, board eraser 5pcs	8	Laos
32	Air Conditioner	Temperature control for clinical training room with equipment	separate type, for room dimation:25m2, capacity: approx.3.0kW, power supply: single phase	8	Laos
33	Audio Visual Set	Learning through DVD and visual teaching material	LCD projector:16000 LMS, PC : notebook type, HD:160GB, OS:WindowXP or more, display:approx. 15inchs, memory size:2GB or more screen size:approx.2x1m with a tripod speaker:power amplifier, connection cable, speaker with wall bracket	4	Laos
Hospital					
Equipment related to Medical Education					
34	Locker for Medical Students	Storage for medical student private properties	size: approx.H180xW120xD40cm, shelf: 3shelves, in total 12 lockers or more, material: stainless steel or wood	15	Laos
35	PC for EBM Data Research	Correcting information for medical treatment, practice and documents	desktop type, HD:160GB, OS:WindowXP, display:approx. 15inchs, memory size:2GB or more	10	Laos
36	Shelf for Medical Record/ X-ray Film	Organizing and storage for medical records and X-ray films	size:approx.H180xW120xD40cm, shelf: 4 more more, material: steel	20	Laos
Clinical Equipment					
37	Electric Cardio Graphy (ECG)	Practice for cardiovascular diseases and basic examination	Standards 12 leads, channel number:6ch, sensitivity:5, 10, 20mm/mV, display:LCD monitor, with carry cart, with rechargeable battery	3	Laos
38	Fatal Doppler	Practice for detection of pregnancy and basic examination	united type of main unit and prove, flequency:2.5- 3.0MHz , , , sinic output: under 10mW/cm2, with gel 5 pcs, battery chager	5	Laos
39	Ventilator, Adult	Training for treatment of adult patients in severe condition under specialist	composition: main unit, air compressor, mobile type, for adult, patient's breathing circuit, reusable, ventilation mode:VCV, PCV, SIM+PSV, tidal volume:50~2,000mL or wider, safety device:equipped	1	Laos
40	Ventilator, Newborn-Infant	Training for treatment of pediatric patients in severe condition under specialist	composition: main unit, air compressor, mobile type, for infant, patient's breathing circuit, reusable, ventilation mode:CMV, IMV, PEEP/CPAP, tidal volume:50~2,000mL or wider, safety device:equipped, with heat humidifier or equivalent	1	Laos
41	Ultrasound Appratus (B/W)	Training for diagnosis and examination of ultrasoundgraphy under specialist	scanning method: electronic convex, electronic linear, display mode: B, B/B, B/M, M or equivalent, display size: max. 24cm or bigger, application: abdominal, Ob/Gyn, pediatrics, urology, breast, vascular, cardiology, with printer	3	Laos

Handwritten signatures and initials at the bottom right of the page.

4-5 Operational Expenses

(1) Inputs of Japanese side

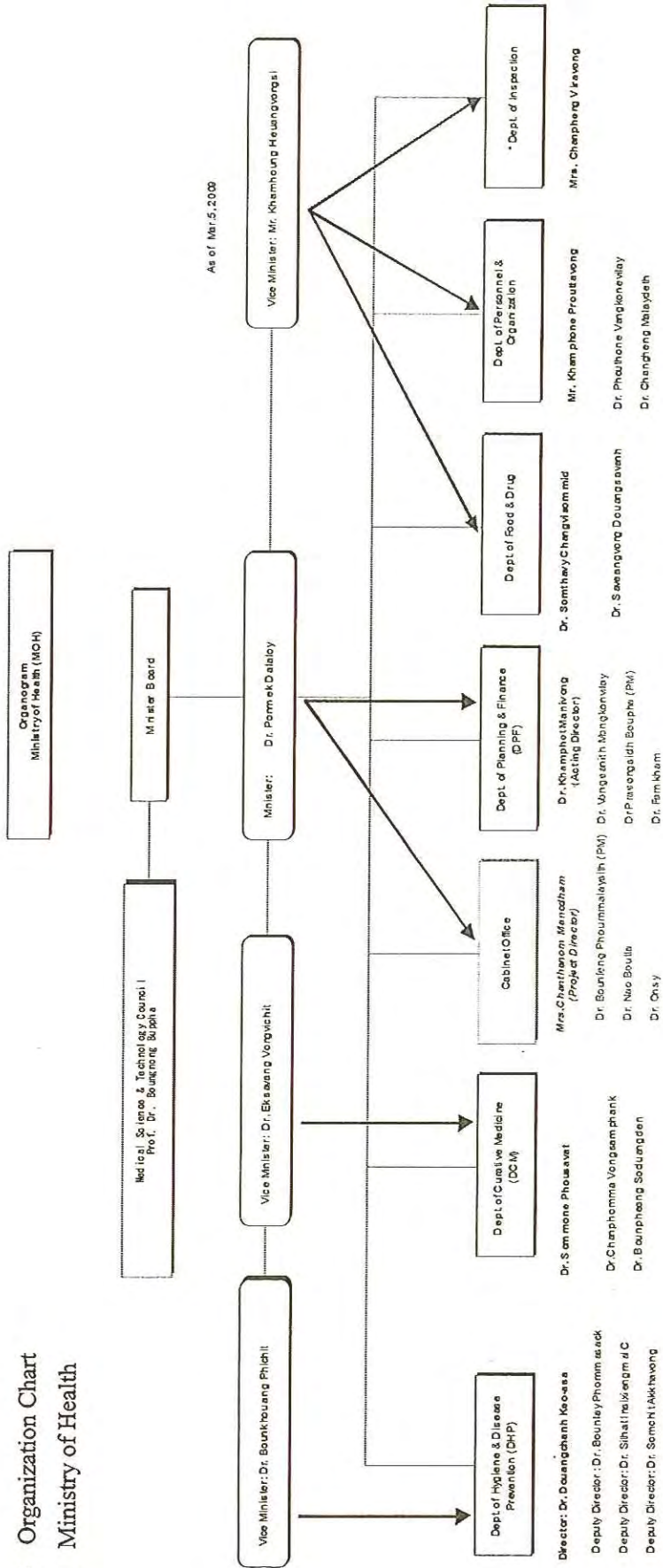
Components	2007	2008	2009	2010
Local costs	¥ 1,036,000	¥8,721,000	¥5,340,000	¥3,714,000
Provision of Equipment			¥ 35,000,000	
Construction of Facility			¥ 10,000,000	

(2) Inputs of Lao side

- Project office
- Utilities for the Project activities, such as heating, lighting and electricity expenses
- Other necessary expenses for maintenance and purchases for the Project activities

f w C. B.

4-6 Organization Chart
(1) Ministry of Health



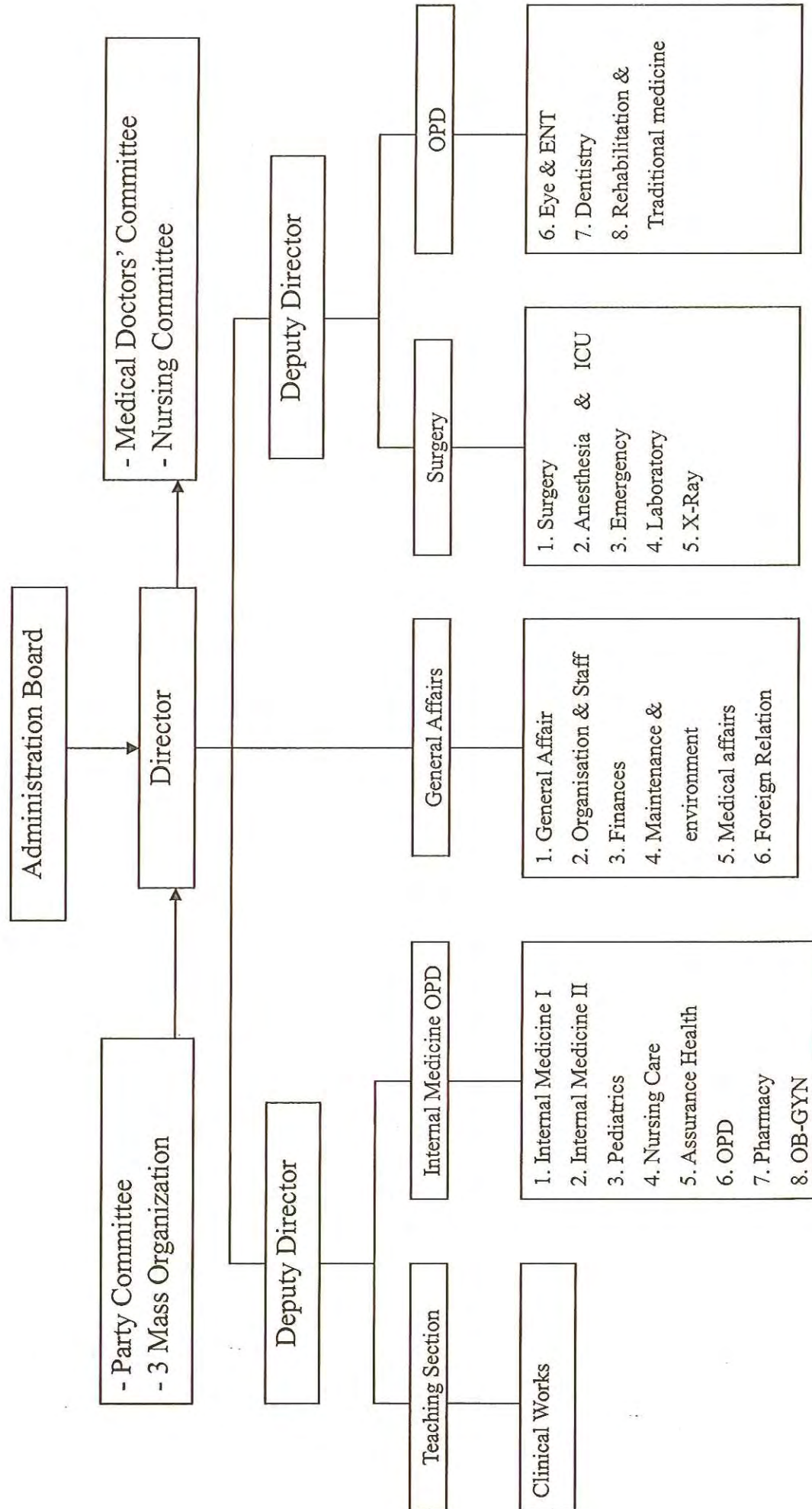
- ** NCH Center
- * Center of Malaria, Parasitology and Entomology (CMPE)
- Laboratory and Epidemiology Center
- National Committee for Control of HIV/AIDS (NCCA)
- Center of Information and Education for Health (CIEH)
- The Environmental Sanitation & Water Supply Center
- Tuberculosis Center
- Chief of Training Div. Dr. Kanhong Sindhath
- * Mahosot Hospital
- * Friends Hip Hospital
- * Dermatology Center
- * Sathath Hospital
- Mother & Child Hospital
- Rehabilitation Center
- Eye Treatment Center

- * Food and Drug Quality Control Center
- Traditional Medicine Research Center
- Pharmaceutical Factory No.11
- Pharmaceutical Factory No.11
- Medical Equipment Center
- Medicine and Food Analysis Center
- Pharmacies

- ** National Institute of Public Health (NIGPH)
- * College of Health Technology
- Auxiliary Nursing School
- University of Health Science (UHS)

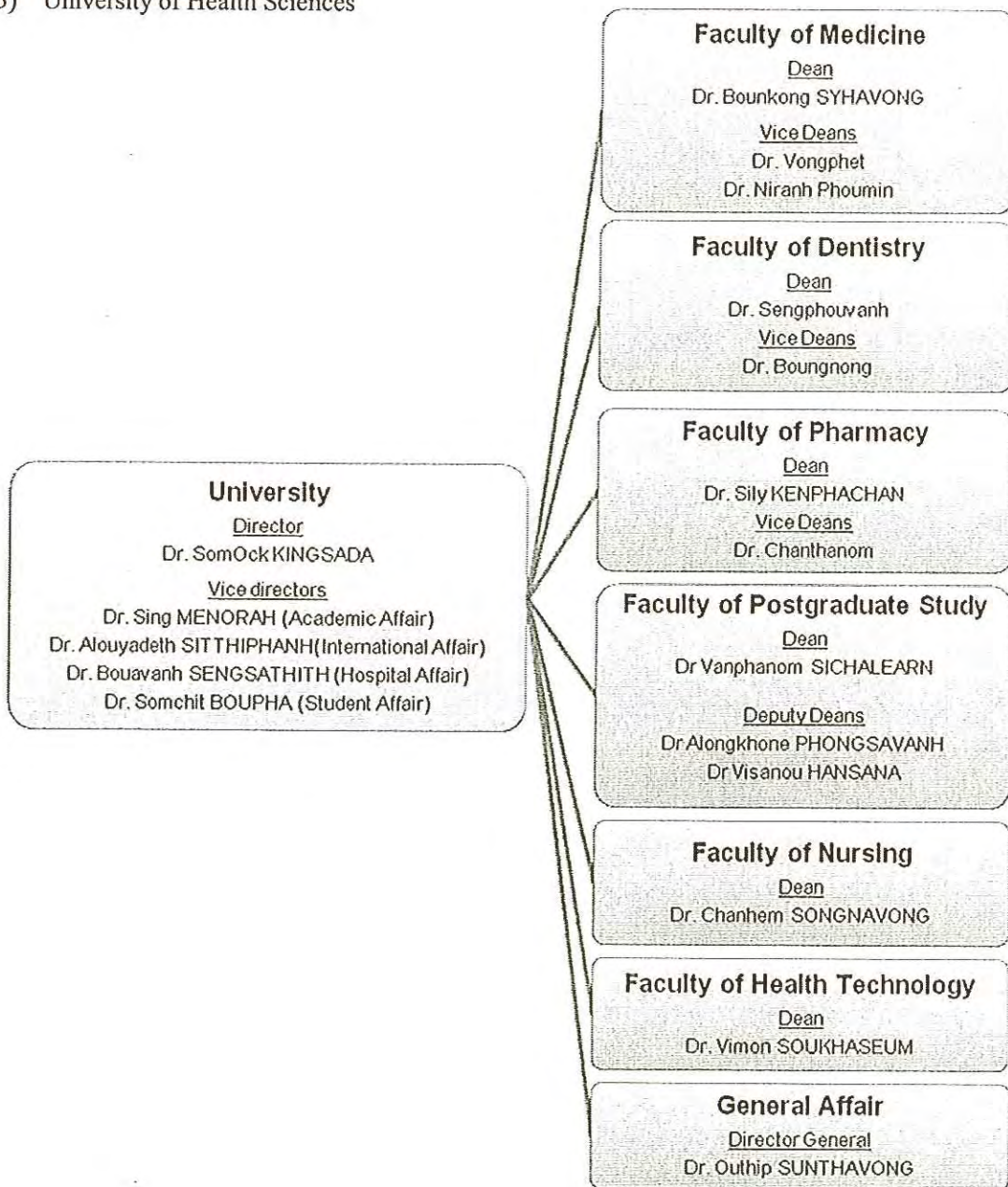
Handwritten signatures and initials at the bottom of the page.

(2) Seththirath Hospital



Handwritten signatures and initials at the bottom of the page.

(3) University of Health Sciences



Handwritten marks and signatures at the bottom of the page.

Attendance list 6th JCC on 8/7/2010

At Setthathirath Hospital (Conference room)

No	Name	Family name	Position	DEPT
1	Dr.Ponemek	DALALOY	Minister	MOH
2	Dr.Nao	BOUTTA	Director of Cabinet	MOH
3	Dr.Bounfeng	PHOUMMALAISIT	Vice Director of Cabinet	MOH
4	Dr.Phouthone	VANGKHONVILAI	Vice Director of Organ & Personal Dept.	MOH
5	Dr.Phisith	PHOUTSAVAT	Chief of Academic Section	Curative.MOH
7	As.Prof.Dr.SomOck	KINGSADA	President of	UHS
8	As.Prof.Sing	MENORATH	Vice President of	UHS
9	Dr.Alounyadeth	SITTHIPHANH	Vice President of	UHS
10	As.Prof.Dr. Manivanh	SOUPHANHTHONG	Dean of Faculty of Medicine	UHS
11	Dr.Phoutthavong	PHENGSIOMBOUN	Chief of Faculty of Academic	UHS
12	Dr.Vongphet	LOUANGXAY	Deputy Chief of AoM	UHS
13	Dr.Ketsomsouk	BOUPHAVANH	D. chief of Academic	UHS
14	Dr.Oua	PHIMMASARN	T.C of Post- Graduate	UHS
15	Dr.Chanhem	SONGMAVONG	Faculty of Nurse	UHS
16	Dr.Niranh	PHOUMINH	Faculty of Medicine	UHS
17	Dr.Khampe	PHONGSAVATH	Director of	Settha hospital
18	Dr.Vangyer	-NENGMONGVANG	Vice Director of	Settha hospital
19	Dr.Phay	DOUANGSY	Chief of General Affair	Settha hospital
20	As.Prof.Dr.Onekham	DOUANGBOUBPHA	Chief of Surgery section	Settha hospital
21	Dr.Viengphouthong	PHROMSAVANH	D. Chief of Surgery	Settha hospital
22	Dr.Bounthieng	APHAY	Chief of OB/GYN	Settha hospital
24	Dr.Keokethong	PHONGSAVATH	D.Chief of OB/GYN	Settha hospital
25	Dr.Keomanichanh	OUPATHANA	Academic of OB/GYN	Settha hospital
26	Dr.Somchanh	SOULARAY	Chief of IM	Settha hospital
27	Dr.Bounmy	SISAMOOUTH	Chief of Endocrine System	Settha hospital
28	Dr.Phouphet	VISOUNNARATH	Chief of Pediatric	Settha hospital
29	Dr.Khamsavanh	KHODXAY	D. Chief of Personal	Settha hospital
30	Mrs.Mimala	PATHOUMXAD	Chief of Relation ship	Settha hospital
31	Dr.Kongsinh	Akkarath	D.Chief of Relation ship	Settha hospital
32	Dr.Viengvansay	NABANDITH	D. Chief of Labo	Settha hospital
33	Dr.Sisomphone	TANDAVONG	Chief of OPD	Settha hospital
34	Dr.Douangkham	PHOMMACHAN	PICU, Pediatric	Mahosot hospital
35	Dr.Khaysy	RASSAVONG	PICU, Pediatric	Mahosot hospital
36	Dr.Phouvong	VONGPHAKDY	Chief of Surgery	Mahosot hospital
37	Dr.Anan	SACKPASEUTH	Chief of OB/GYN	Mahosot hospital
38	As.Pro.Dr.Vanleum	BOUALAVONG	Director of	Mittaphab hos
39	Dr.Phoukieng	DOUACHAK	D. Director of	Mittaphab hos
40	Dr.Sinpasong	SINVONGSA	Chief of Surgey	Mittaphab hos
41	As.Prof.Dr.Bouavanh	SENSATHIT	Vice President of UHS, & Director of MCH	MCH
42	Dr.Somsai	BINLAMAI	Chief of Pediatric	MCH
43	Dr.Sivansay	CHANTHAVONGSACK	OB/GYN	MCH

44	Ms.Yuki	YOSHIMURA	Representative of	JICA Lao office
45	Mr.Yoshiharu	YONEYAMA	Senior Representative	JICA
46	Ms.Yumiko	TERAO	Senior Volunteer	Nursing SH
47	Mr.Yoichi	INOUE	JDS, Final Evaluation	JICA,
48	Mr.Mitsuhiro	USHIO	Chief of Final Evaluation Team	JICA
49	Ms.Ayumi	MIZUNO	Final Evaluation Team	JICA
50	Dr.Hirotaka	ONISHI	Chief Advisor	MESH Project
51	Dr.Masamine	JIMBA	EBM	MESH Project
52	Mrs.Keiko	MURAMATSU	Training Management & Evaluation/ Medical Lab	MESH Project



**Agenda for the 7th Joint Coordination Committee
of
The Project for Medical Education and Research for
the Setthathirath Hospital, Lao P. D. R.**

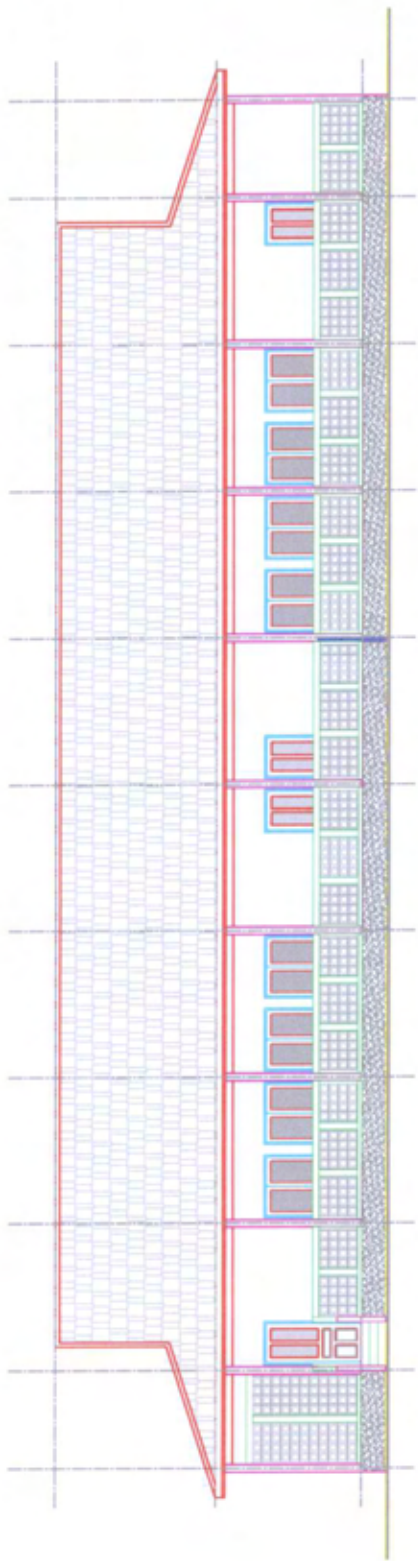
Date: 28 October 2010
 Time: 9:30 – 12:00
 Venue: Conference Room, Setthathirath Hospital
 Agenda and Timetable

Time	Agenda	Care of
9:00	Registration (until 9:30)	
9:30	Opening remarks Introduction of guests	Deputy Project Director Dr. Khampe PHONGSAVATH Chief Representative JICA Office Mr. Masato TOGAWA Chief Advisor, JICA Expert Team Dr. Hirotaka Onishi
9:45	Overview and achievement of the Project activities of April 2009 - March 2010	Chief Advisor, JICA Expert Team Dr. Hirotaka ONISHI
10:15	Questions, answers and discussion	Deputy Project Director Dr. Khampe PHONGSAVATH
10:30	Coffee break	
10:45	Suggestions for further improvement after the Project	Chief Advisor, JICA Expert Team Dr. Hirotaka ONISHI
11:15	Questions, answers and discussion	Deputy Project Director Dr. Khampe PHONGSAVATH
11:50	Closing remarks	Minister of Health Dr. Ponmek DALAROY
12:00	Basi ceremony	Deputy Project Director Dr. Khampe PHONGSAVATH

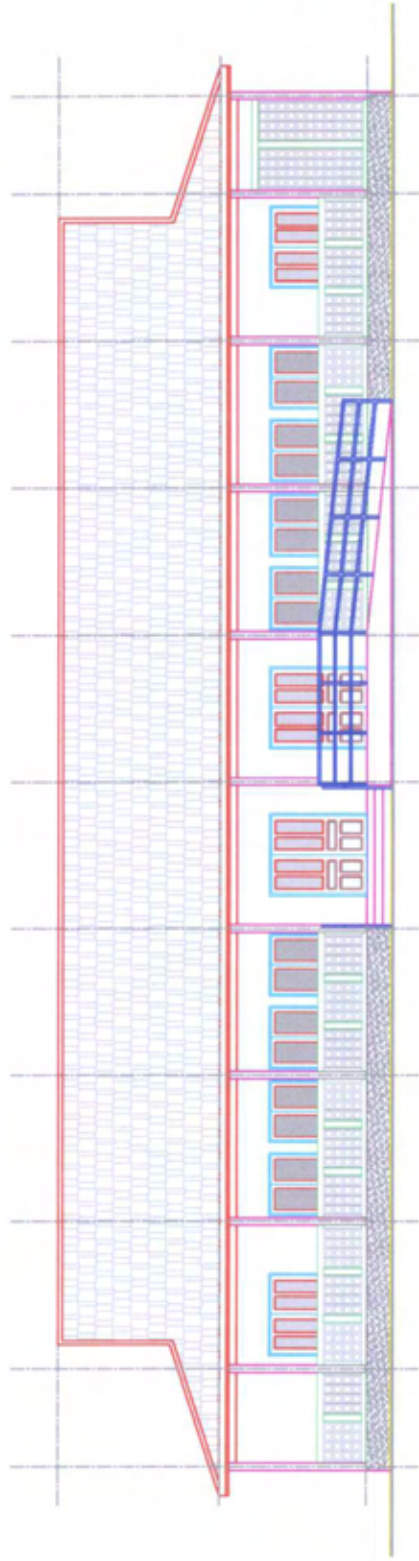
Attendance list of the 7th JCC (28/10/2010)

No	Name	Organization
1	Dr.Vakkhaly Boudtavong	Settha Hosp.
2	Dr. Phouphet Visounnarath	Settha Hosp.
3	Dr. Khamstone Phongsavathdy	Laungphabang
4	Dr. Pemkanda Saicosy	Laungphabang
5	Dr. Khamphet Thanmavong	Laungphabang
6	Dr. Phanomxay Phakone	Laungphabang
7	Dr. Bounthan Phag thanavanh	Champasak
8	Dr. Sinthavong Phromsavanh	Laungphabang
9	Dr. Boungho Monmanychanh	Laungphabang
10	Dr. Viengvansay Nabandith	Laungphabang
11	Dr. Tavanh Manivong	Laungphabang
12	Dr. Khamta Lienkhammy	Settha Hosp.
13	Ms. Pindavone Phaxayavong	Laungphabang
14	Dr. Phimseng Phitthanousone	Settha Hosp.
15	Ms. Mimala Phathoumazad	Settha Hosp.
16	Dr. Sisomphone Thandavong	Settha Hosp.
17	Dr. Oua Phimmasarn	UHS
18	Dr. Viengsakhone Louangradith	Laungphabang
19	Dr. Chanthla Phamisith	Savannakhet
20	Ms. Sisouphat Luangxay	Laungphabang
21	Ms. Choummaly Vimany	Laungphabang
22	Dr. Bounthoum Samontry	Laungphabang
23	Dr. Onekham Douangboupaha	Settha Hosp.
24	Mr. Yoshiharu Yoneyama	JICA
25	Dr. Bounfeng Phoummalaisith	JICA
26	Dr. Padit Souvanlasy	Champasak
27	Dr. Somchit Boupaha	UHS
28	Mr. Souphon Kousonsavath	JICA
29	Dr. Kesomsouk Boupavath	UHS
30	Ms. Satoko Okamoto	MESH
31	Dr. Vanilem Bouaravong	Mittaphab
32	Dr. Khammek Singhavong	Settha Hosp.
33	Dr. Phetnoulath Phannavong	Mariateresa Hosp.
34	Ms. Bouakeo Keodouangdy	Settha Hosp.
35	Dr. Outhip Sounthavong	UHS
36	Dr. R. Pons	Settha Hosp.
37	Mr. Sayavath Phannavong	Vietaine Time News
38	Dr. Kaysy Rassavong	Mahosot
39	Dr. Oukeo Khounthalyvong	Settha Hosp.
40	Dr. Keo Phommarath	Settha Hosp.
41	Dr. Bounthieng Aphay	Settha Hosp.
42	Dr. Boulam Insyxiengmai	Settha Hosp.
43	Dr. Bounkong Sihavong	Mahosot
44	Dr. Douangkham Phommachanh	Mahosot
45	Ms. Khamla Sioudom	Settha Hosp.
46	Dr. Chanthala Phamesith	Savannakhet
47	Dr. Khamsing Phoulivong	UHS
48	Dr. Bounsai Thovisouk	MESH
49	Dr. Vilack Vidamang	Mariateresa Hosp.
50	Mr. Toshiharu Hata	MESH
51	Dr. Keiko Yano	MESH
52	Dr. Hirotaka Onishi	MESH

4. Construction Document of Clinical Learning Center (CLC)

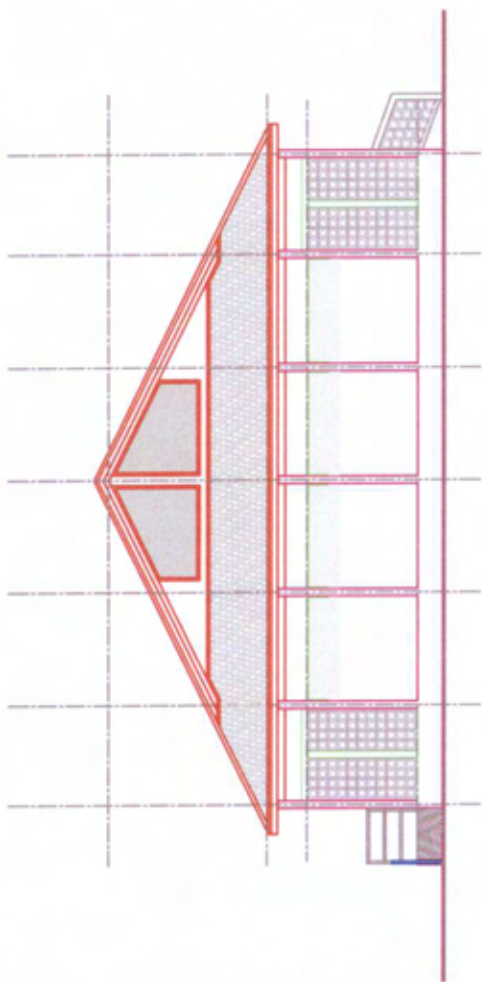


BACK ELEVATION

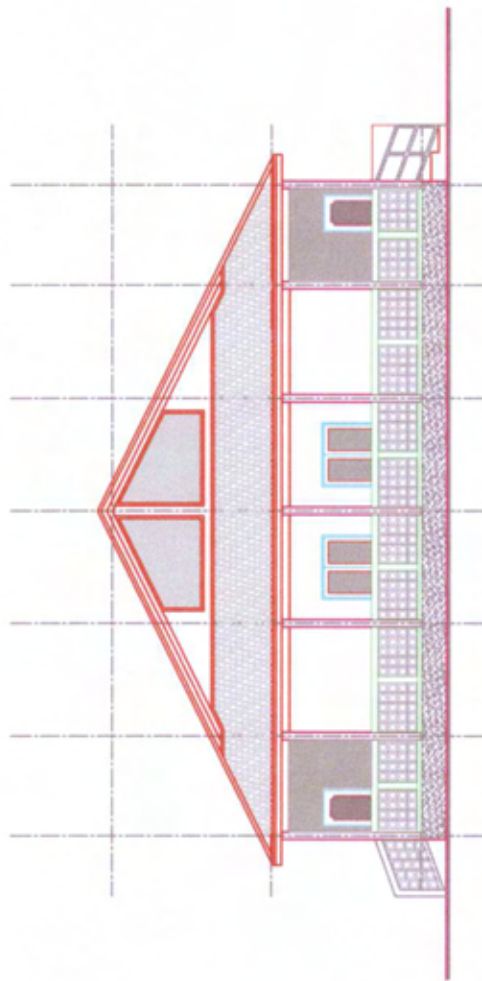


FRONT ELEVATION



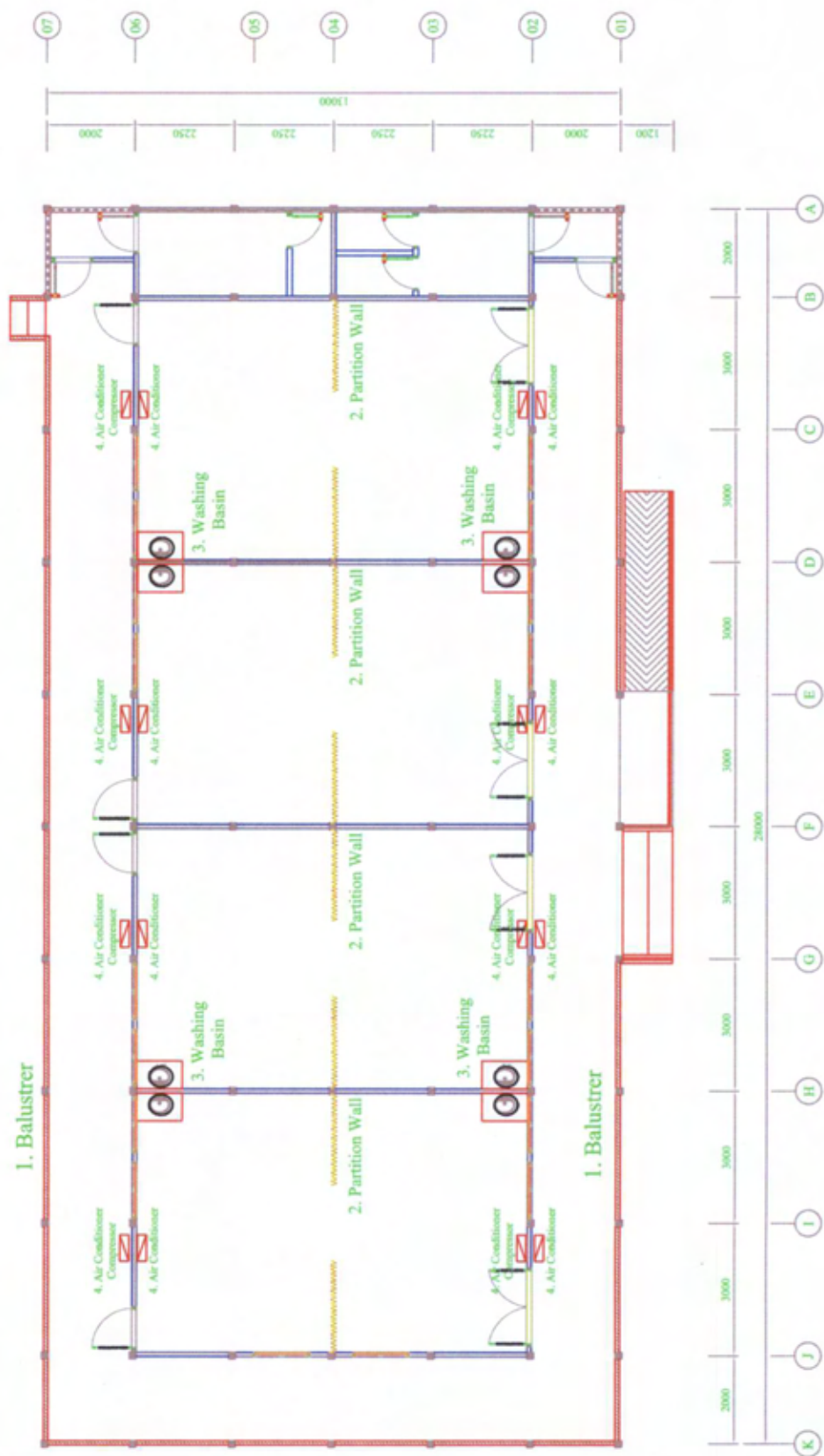


RIGHT ELEVATION



LEFT ELEVATION





5. Questionnaires of Sub-contracted Surveyy

Questionnaire 1.
Dundee Ready Education Environment Measure (DREEM)

5- Strongly agree, 4- Agree, 3- Don't know, 2- Disagree, 1- Strong disagree

	Item
1	I am encouraged to participate in class
2	The teachers are knowledgeable
3	There is a good support system for students who get stressed
4	*I am too tired to enjoy the course
5	Learning strategies which worked for me before continue to work for me now
6	The teachers are patient with patients
7	The teaching is often stimulating
8	*The teachers ridicule the students
9	*The teachers are authoritarian
10	I am confident about my passing this year
11	The atmosphere is relaxed during the ward teaching
12	This school is well timetabled
13	The teaching is student centered
14	I am rarely bored on this course
15	I have good friends in this school
16	The teaching helps to develop my competence
17	*Cheating is a problem in this school
18	The teachers have good communications skills with patients
19	My social life is good
20	The teaching is well focused
21	I feel I am being well prepared for my profession
22	The teaching helps to develop my confidence
23	The atmosphere is relaxed during lectures
24	The teaching time is put to good use
25	*The teaching over-emphasizes factual learning
26	Last year's work has been a good preparation for this year's work
27	I am able to memorize all I need
28	I seldom feel lonely
29	The teachers are good at providing feedback to student
30	There are opportunities for me to develop interpersonal skills
31	I have learned a lot about empathy in my profession
32	The teachers provide constructive criticism here
33	I feel comfortable in class socially
34	The atmosphere is relaxed during seminars / tutorials
35	*I feel the experience disappointing
36	I am able to concentrate well
37	The teachers give clear examples
38	I am clear about the learning objectives of the course
39	*The teachers get angry in class
40	The teachers are well prepared for their classes
41	My problem solving skills are being well developed here
42	The enjoyment outweighs the stress of the course
43	The atmosphere motivates me as a learner
44	The teaching encourages me to be an active learner
45	Much of what I have to learn seems relevant to a career in healthcare
46	My accommodation is pleasant
47	Long term learning is emphasized over short term learning
48	*The teaching is too teacher-centered
49	I feel able to ask the question I want
50	*The students irritate the teachers

* Inverted questions

Questionnaire 2.
Postgraduates Hospital Education Environmental Measure (PHEEM)

5- Strongly agree, 4- Agree, 3- Don't know, 2- Disagree, 1- Strong disagree

#	Item
1	I have contract to employment that provides information about working hours
2	My clinical teachers set clear expectations
3	I have protected educational time in this post
4	I had an informative induction program
5	I have the appropriate level of responsibility in this post
6	I have good clinical supervision at all times
7	*There is racism in this post (due to my minority, nationality)
8	*I have to perform in appropriate tasks
9	There is an informative new doctors handbook
10	My clinical teachers have good communication skills
11	*I am called in appropriately
12	I am able to participate actively in educational events
13	*There is sex discrimination in this post
14	There is clear clinical protocols in this post
15	My clinical teachers are enthusiastic
16	I have good collaboration with other doctors in my grade
17	My working hours conform to the regulation
18	I have the opportunity to provide continuity of care
19	I have suitability access to careers advice
20	This hospital has good quality accommodation for young doctors especially when on call
21	There is access to an educational program relevant to my needs
22	I get regular feed back from senior staff
23	My clinical teachers are well organized
24	I feel physically safe within the hospital environment
25	There is a no-blame culture in this post
26	There are adequate meal facilities when I am on call
27	I have enough clinical learning opportunities for my needs
28	My clinical teachers have good teaching skills
29	I feel part of a team working here
30	I have opportunities to acquire the appropriate practical procedures for my grade
31	My clinical teachers are accessible
32	My workload in this job is fine
33	Senior staff utilize learning opportunities effectively
34	The training in this post makes me feel ready to be a specialized doctor
35	My clinical teachers have good mentoring skills
36	I get a lot of enjoyment out of my present job
37	My clinical teachers encourage me to be an independent learner
38	There are good counseling opportunities for young doctors who fail to complete their training satisfactorily
39	The clinical teachers provide me with good feedback on my strengths and weaknesses
40	My clinical teachers promote an atmosphere of mutual respect

* Inverted questions

Questionnaire 3.
Clinical Teacher Evaluation by Medical Students

Please rate each preceptor with whom you have worked according to the scales below. Focus this evaluation on your experience with each preceptor as a teacher. You can leave blank if you have had contacts only with small number of teachers.

How many sessions of Teaching CONTACT:	5 = Frequent (>10)	Education VALUE:	5 = Exceptional Teacher (top 10-20% of preceptor)
	4 = Moderate (7-9)		4 = Above Average Teacher (15-25% of preceptor)
	3 = Some (4-6)		3 = Average Teacher (25-35% of preceptor)
	2 = Minimal (1-3)		2 = Below Average Teacher (15-25% of preceptor)
	1 = None		1 = Poor Teacher (bottom 10-20% of preceptor)

Session = At least one hour precepting in the ward round or sitting in a conference.

	Name of the preceptor	<u>CONTACT</u>	<u>VALUE</u>	Comments
Preceptor 1				
Preceptor 2				
Preceptor 3				
Preceptor 4				
Preceptor 5				
Preceptor 6				
Preceptor 7				
Preceptor 8				
Preceptor 9				

Questionnaire 4.

Clinical Teacher Evaluation by Medical Students

The original source of the following items has used to assess satisfaction of patients in the U.S. and its translation in Japanese has seen valid to measure in Japanese settings. After discussing among person who are familiar Lao language and culture based on it, we developed the questionnaire to assess medical student's dissatisfaction as bellow.

5- Strongly agree, 4- Agree, 3- Don't know, 2- Disagree, 1- Strong disagree

Questions	
Q01	Telling you everything; being truthful, upfront and frank; not keeping things from you that you should know
Q02	Greeting you warmly; calling you by the name you prefer; being friendly, never crabby or rude
Q03	Treating you like you're on the same level; never "talking down" to you or treating you like a child
Q04	Letting you tell your story; listening carefully; asking thoughtful questions; not interrupting you while your talking
Q05	Showing interest in you as a person; not acting bored or ignoring what you have to say
Q06	Warning you during the physical exam about what he/she is going to do and why; telling you what he/she finds
Q07	Discussing options with you; asking your opinion; offering choices and letting you help decide what to do; asking what you think before telling you what to do
Q08	Encouraging you to ask questions; answering them clearly; never avoiding your questions or lecturing you
Q09	Explaining what you need to know about your problems, how and why they occurred, and what to expect next
Q10	Using words you can understand when explaining your problems and treatment; explaining any technical medical terms in plain language

Questionnaire 5.

Questionnaire for Preceptors as a Group in Medical Students

Definition of clinical teachers is all the physicians working with you in the team. Please read the items below carefully and tick for all the questions.

	Items	Poor	Fair	Good	Very good	Excellent
1	My clinical teachers work hard not only for patient care but also teaching.	<input type="checkbox"/>	<input type="checkbox"/>	<input type="checkbox"/>	<input type="checkbox"/>	<input type="checkbox"/>
2	My clinical teachers' communication is clear for me.	<input type="checkbox"/>	<input type="checkbox"/>	<input type="checkbox"/>	<input type="checkbox"/>	<input type="checkbox"/>
3	My clinical teachers prepare for work spaces, study guides, and schedules	<input type="checkbox"/>	<input type="checkbox"/>	<input type="checkbox"/>	<input type="checkbox"/>	<input type="checkbox"/>
4	I regard my clinical teachers as role models	<input type="checkbox"/>	<input type="checkbox"/>	<input type="checkbox"/>	<input type="checkbox"/>	<input type="checkbox"/>
5	My clinical teachers give feedback on my performance repeatedly.	<input type="checkbox"/>	<input type="checkbox"/>	<input type="checkbox"/>	<input type="checkbox"/>	<input type="checkbox"/>
6	My clinical teachers accepted and included me as a professional team member.	<input type="checkbox"/>	<input type="checkbox"/>	<input type="checkbox"/>	<input type="checkbox"/>	<input type="checkbox"/>
7	My clinical teachers stimulated my problem-solving capabilities by asking probing questions.	<input type="checkbox"/>	<input type="checkbox"/>	<input type="checkbox"/>	<input type="checkbox"/>	<input type="checkbox"/>
8	My clinical teachers guided self-learning for patient problems and their management.	<input type="checkbox"/>	<input type="checkbox"/>	<input type="checkbox"/>	<input type="checkbox"/>	<input type="checkbox"/>
9	My clinical teachers encouraged me to ask questions.	<input type="checkbox"/>	<input type="checkbox"/>	<input type="checkbox"/>	<input type="checkbox"/>	<input type="checkbox"/>
10	My clinical teachers assigned appropriate number of patients to me for learning.	<input type="checkbox"/>	<input type="checkbox"/>	<input type="checkbox"/>	<input type="checkbox"/>	<input type="checkbox"/>

Questionnaire 6.
Cause Management Evaluation Questionnaire

Please read the items below carefully and tick for all the questions.

Items	Poor	Fair	Good	Very good	Excellent
1. Clarity of course goals, objective and expectations.	<input type="checkbox"/>	<input type="checkbox"/>	<input type="checkbox"/>	<input type="checkbox"/>	<input type="checkbox"/>
2. Overall course organization and consistency.	<input type="checkbox"/>	<input type="checkbox"/>	<input type="checkbox"/>	<input type="checkbox"/>	<input type="checkbox"/>
3. How well the course achieved stated goals.	<input type="checkbox"/>	<input type="checkbox"/>	<input type="checkbox"/>	<input type="checkbox"/>	<input type="checkbox"/>
4. Your participation in the MTU team to assist patient care.	<input type="checkbox"/>	<input type="checkbox"/>	<input type="checkbox"/>	<input type="checkbox"/>	<input type="checkbox"/>
5. Educational value/amount learned from the course.	<input type="checkbox"/>	<input type="checkbox"/>	<input type="checkbox"/>	<input type="checkbox"/>	<input type="checkbox"/>
6. How much did you learn from residents and interns?	<input type="checkbox"/>	<input type="checkbox"/>	<input type="checkbox"/>	<input type="checkbox"/>	<input type="checkbox"/>
7. How much did you learn from preceptors?	<input type="checkbox"/>	<input type="checkbox"/>	<input type="checkbox"/>	<input type="checkbox"/>	<input type="checkbox"/>
8. Were residents and interns helpful when you had problems or questions?	<input type="checkbox"/>	<input type="checkbox"/>	<input type="checkbox"/>	<input type="checkbox"/>	<input type="checkbox"/>
9. Were preceptors helpful when you had problems or questions?	<input type="checkbox"/>	<input type="checkbox"/>	<input type="checkbox"/>	<input type="checkbox"/>	<input type="checkbox"/>
10. How well did the workload fit you?	<input type="checkbox"/>	<input type="checkbox"/>	<input type="checkbox"/>	<input type="checkbox"/>	<input type="checkbox"/>
11. Overall rating / quality of course	<input type="checkbox"/>	<input type="checkbox"/>	<input type="checkbox"/>	<input type="checkbox"/>	<input type="checkbox"/>

Any comments, such strengths, weaknesses or suggestions for future improvements: