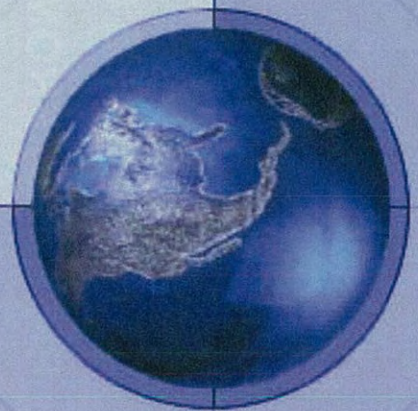


Mega Rice Project

Flash Back

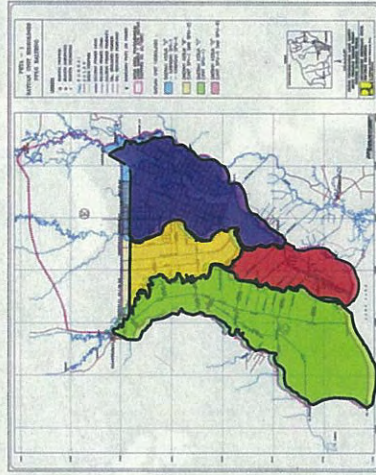




BLOCKING AREA OF EX MRP

There were formally 4 (four) blocking area, the E block was added later since this area from the early beginning has been identified as non suitable area for development (designated as preservation area in the original land zonation of MPR, for the deep sandy peat soil) >>> see the color code for picture and list below):

- **A Block = 227,100 Ha**
- **B Block = 161,480 Ha**
- **C Block = 568,635 Ha**
- **D block = 162,278 Ha**

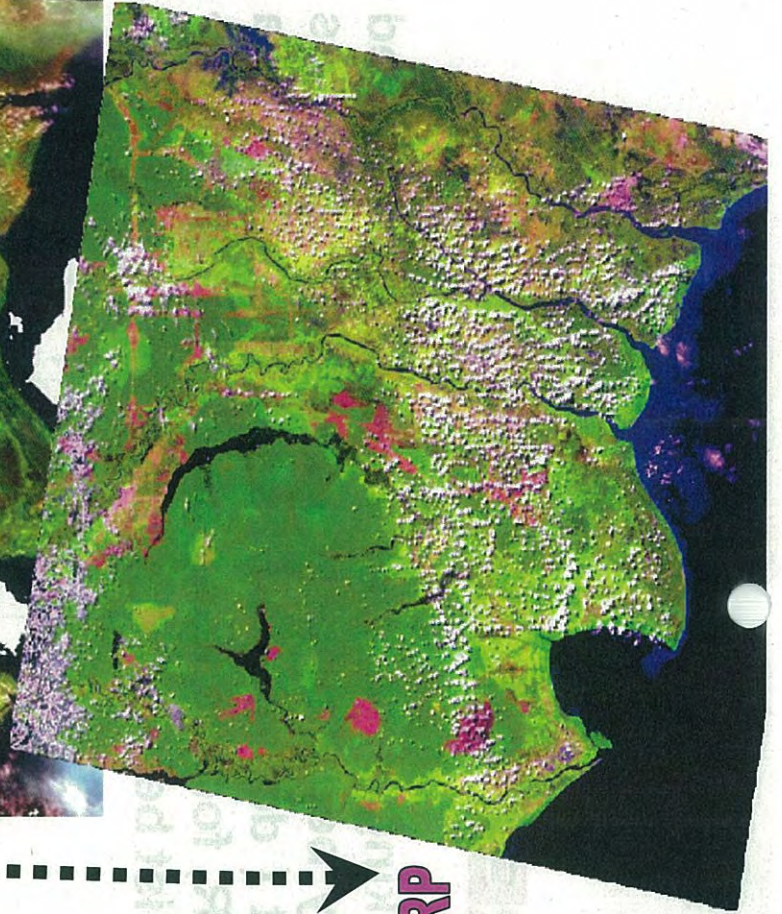
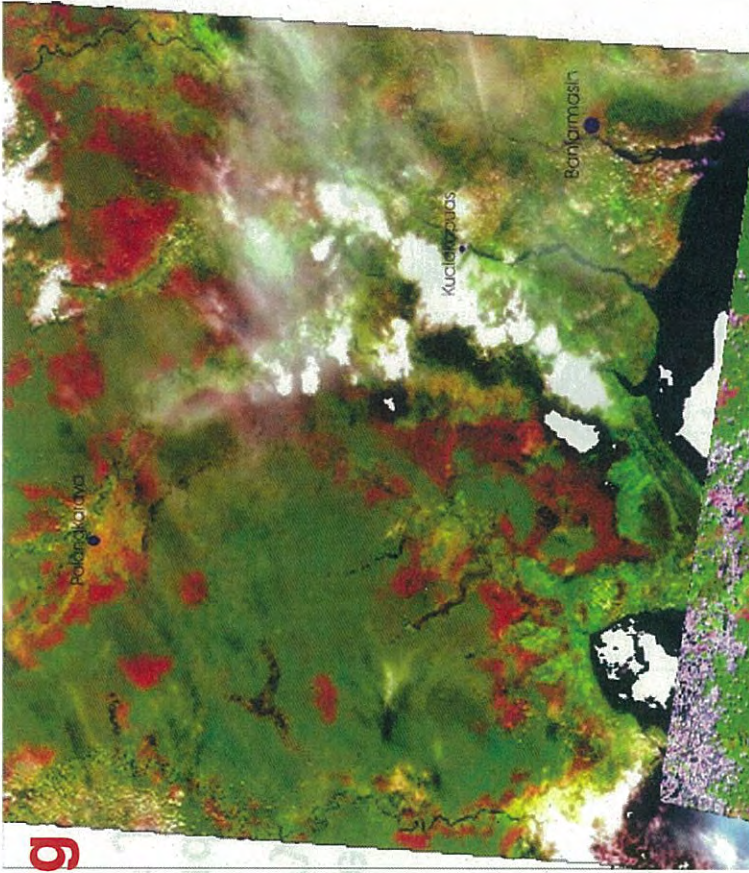
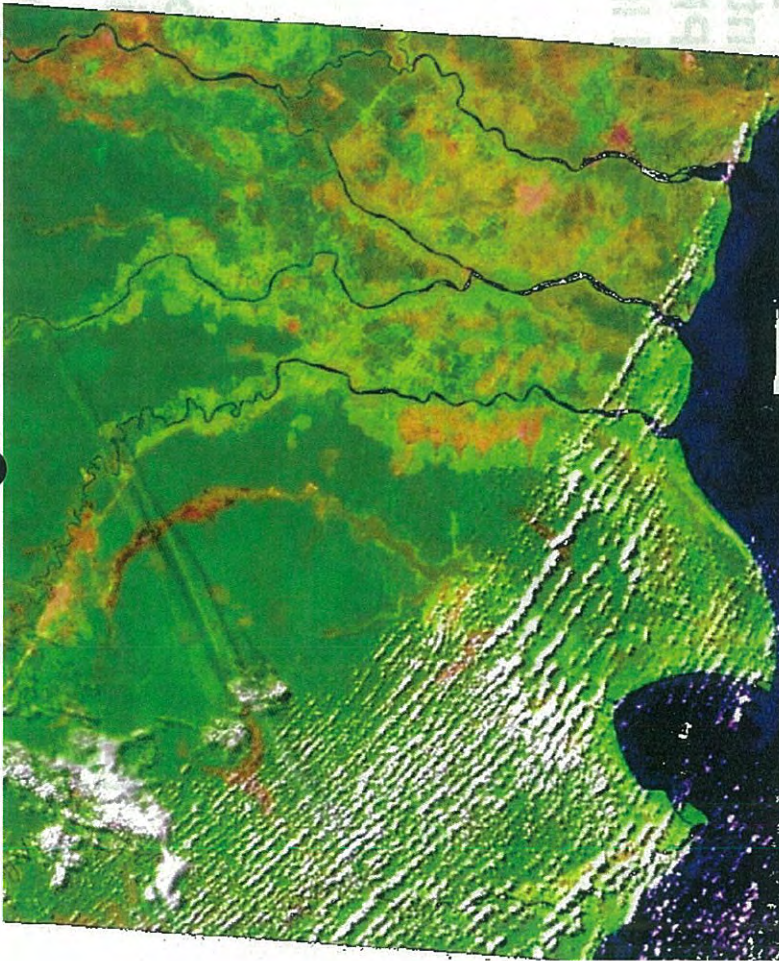


- **E Block = 337,607 Ha, located up north SPI 1 and SPI 2 (Saluran Primer Induk, Main Primary Channel)**

Total length of channel network (intended as irrigation and drainage) is more than 4,000 km, 4x the length of Java Island

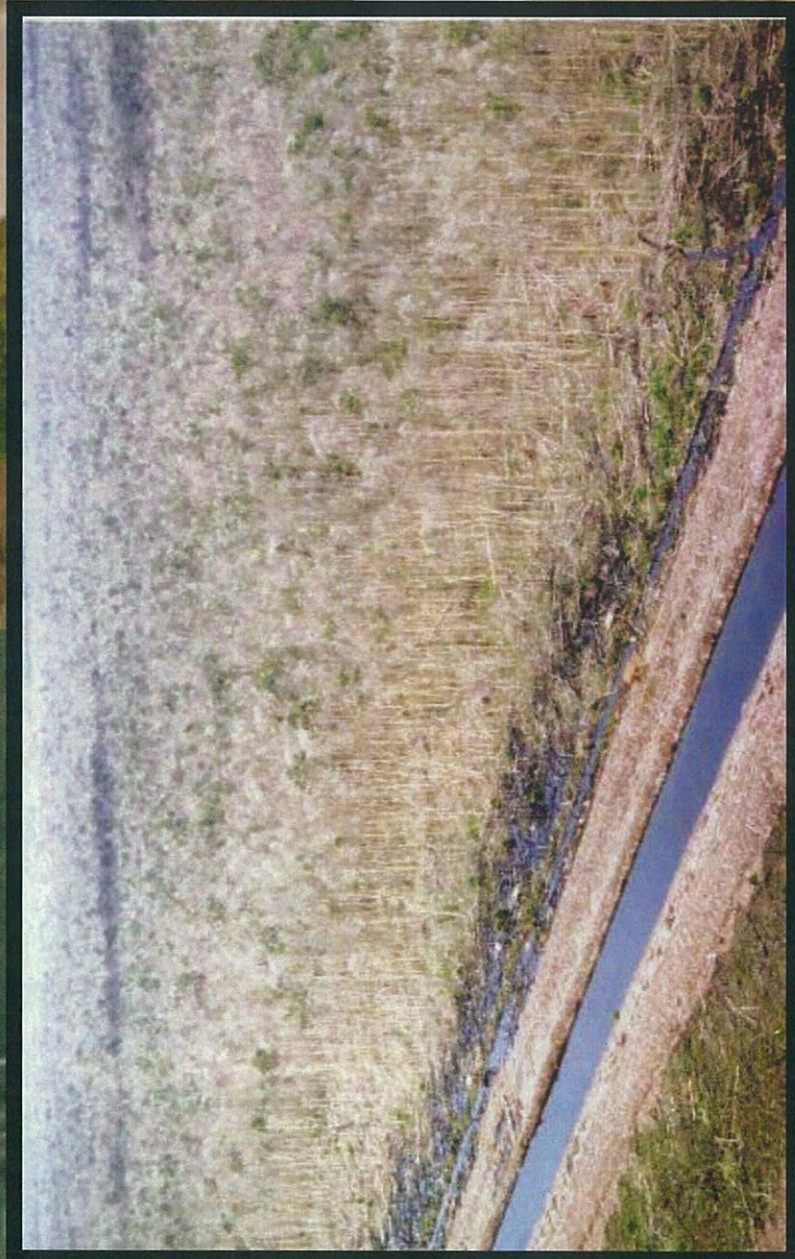
1998, MRP on going

1994, Pre MRP



2003, post MRP

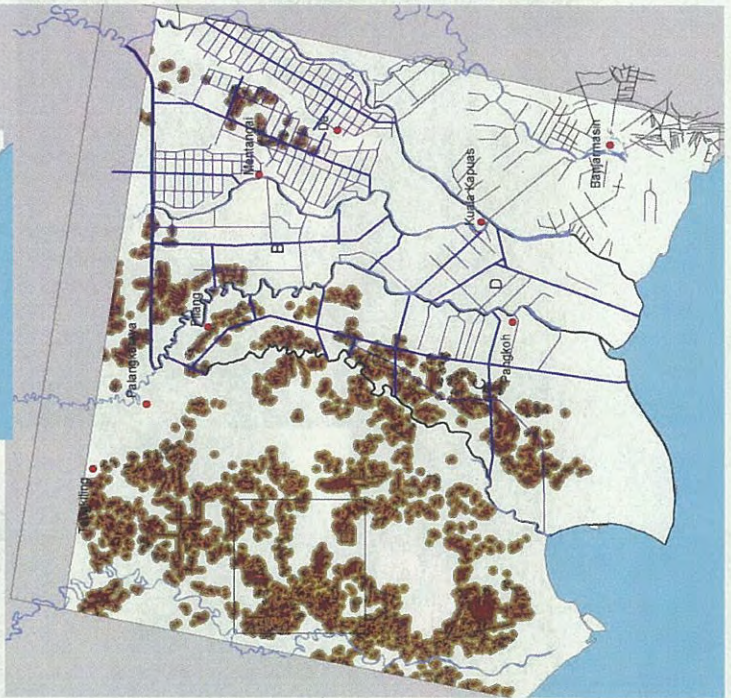
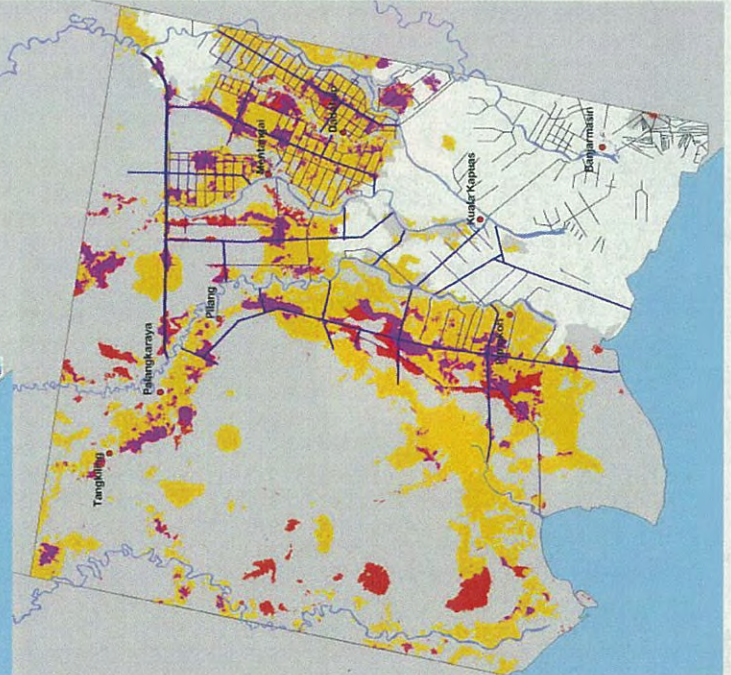
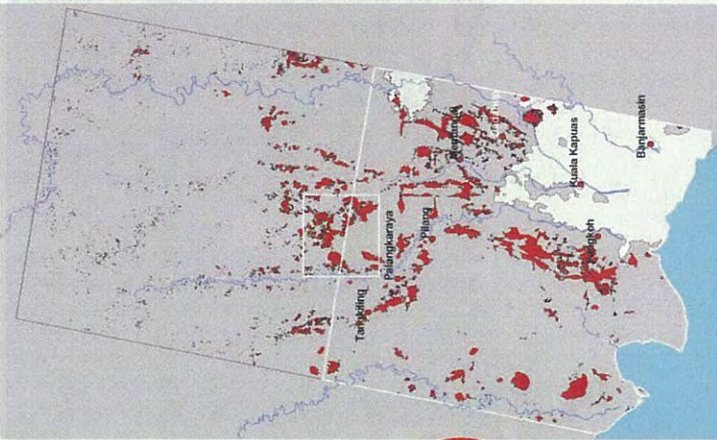
OVERDRAIN

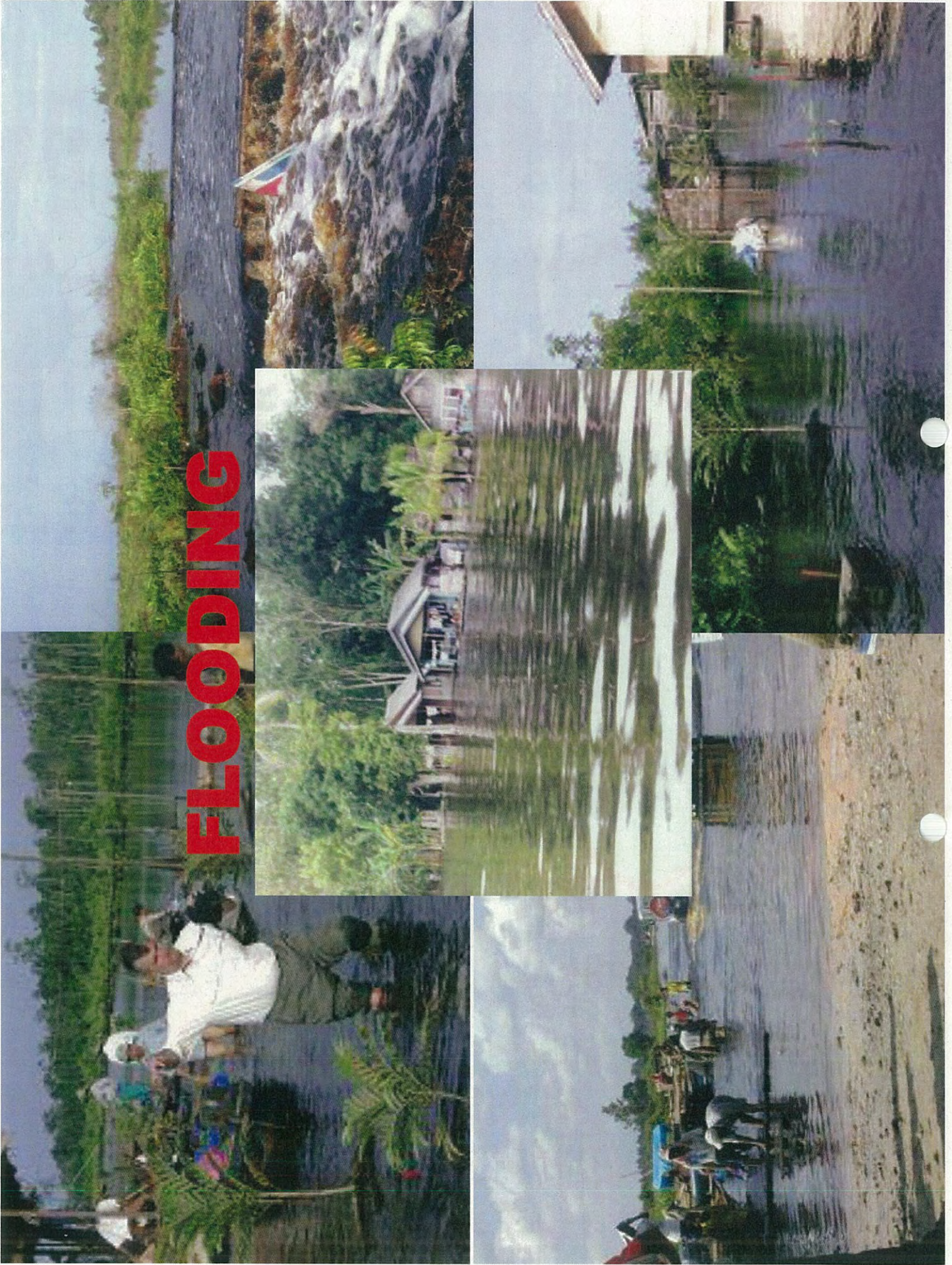


FIRE



Correlation
between peatfire
and canal network





FLOODING