

# LOG PRODUCTION Target and Realization from Forest Concessioners (HPH)

No.	Year	Target (Mi M3)	Product (Mi M3)
1.	2000	3.233	1.658
2.	2001	3.285	1.403
3.	2002	2.500	1.369
4.	2003	1.987	1.024
5.	2004	2.113	1,013
6.	2005	2.355	0.985

Significantly decreasing  
from from year to year





## NON TIMBER FOREST PRODUCTS (2004)

- Primary Non Timber Forest Products

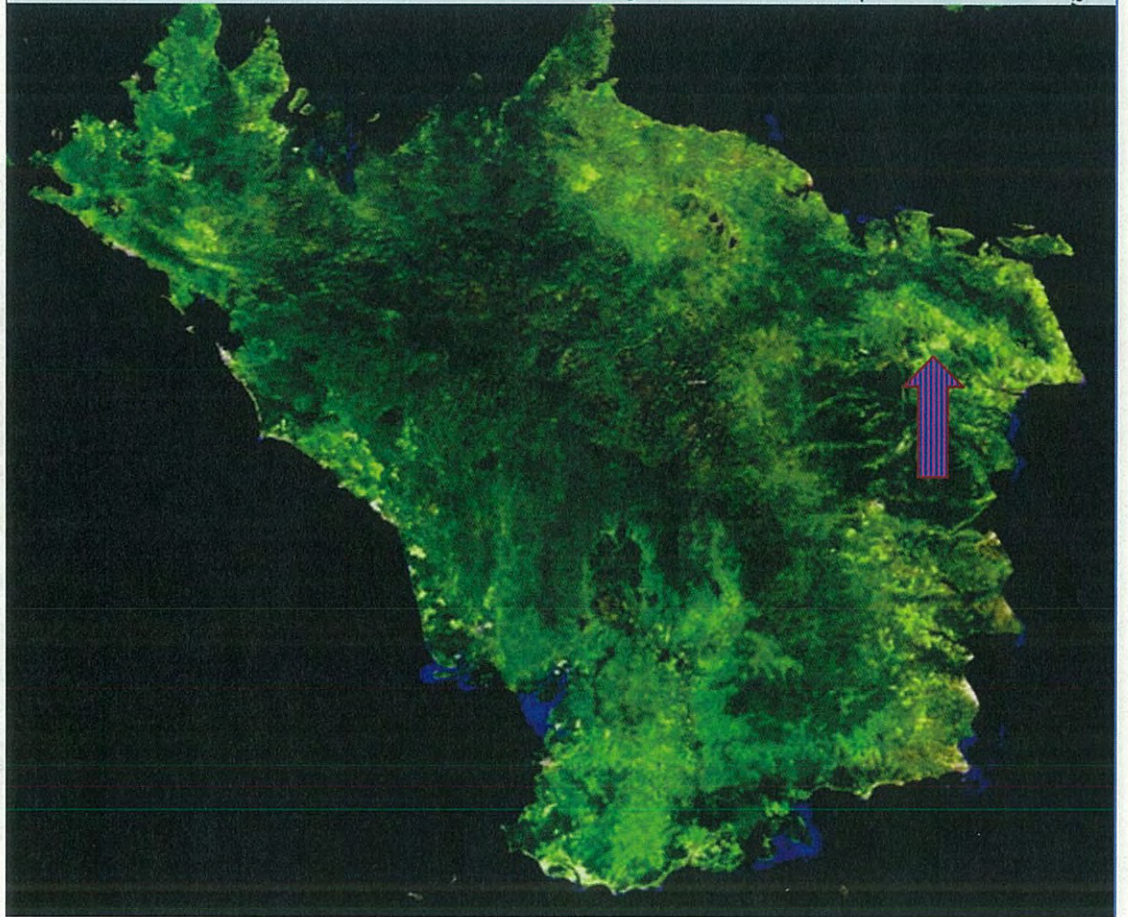
- |                       |               |
|-----------------------|---------------|
| 1. Rattan             | 5,301,436 Ton |
| 2. Resin (2003)       | 38,000 Kg     |
| 3. Wild rubber (2004) | 4,438 Kg      |
| 4. Tree Bark (2003)   | 37,433 Kg     |

- Environmental services and other forest services not yet developed.
- Carbon scheme and climate change adaptive scheme not yet operational

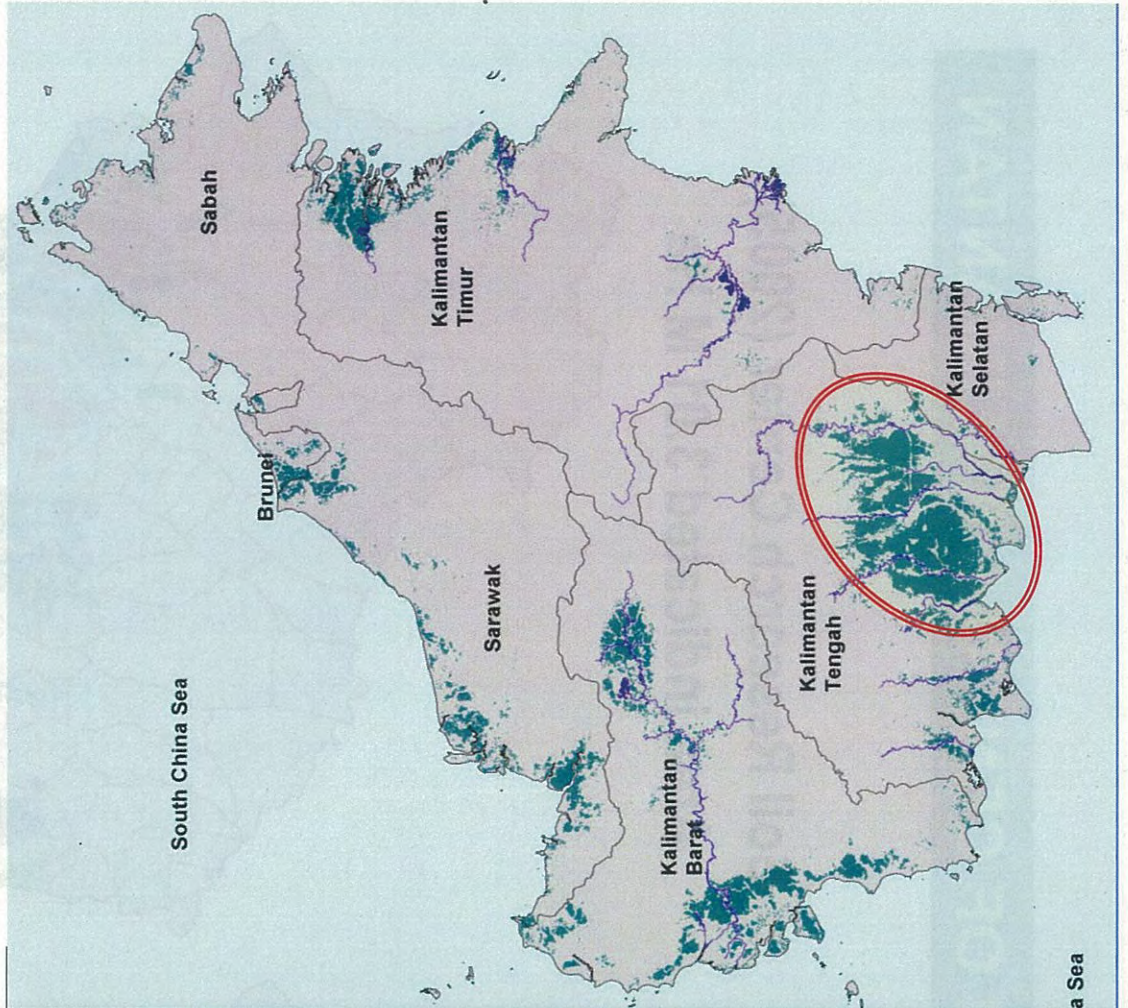


# PEATLAND DISTRIBUTION OF KALIMANTAN

MODIS Images Mosaic (2003)



Indication of Remaining Peatland of Central Kalimantan

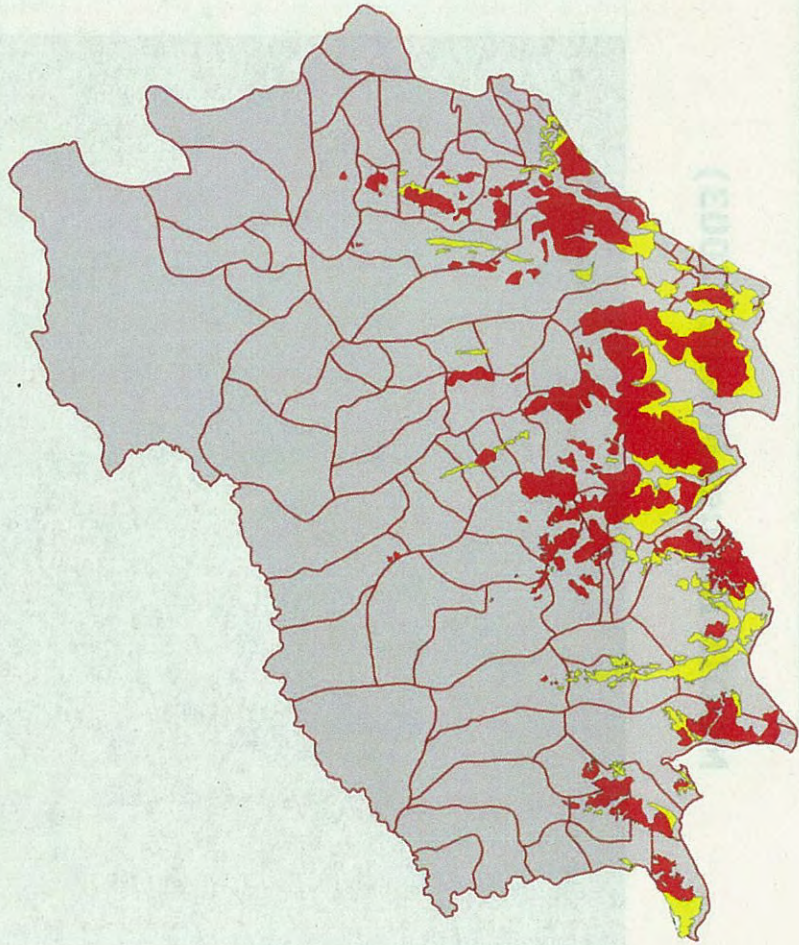




# PEATLAND DISTRIBUTION OF CENTRAL KALIMANTAN

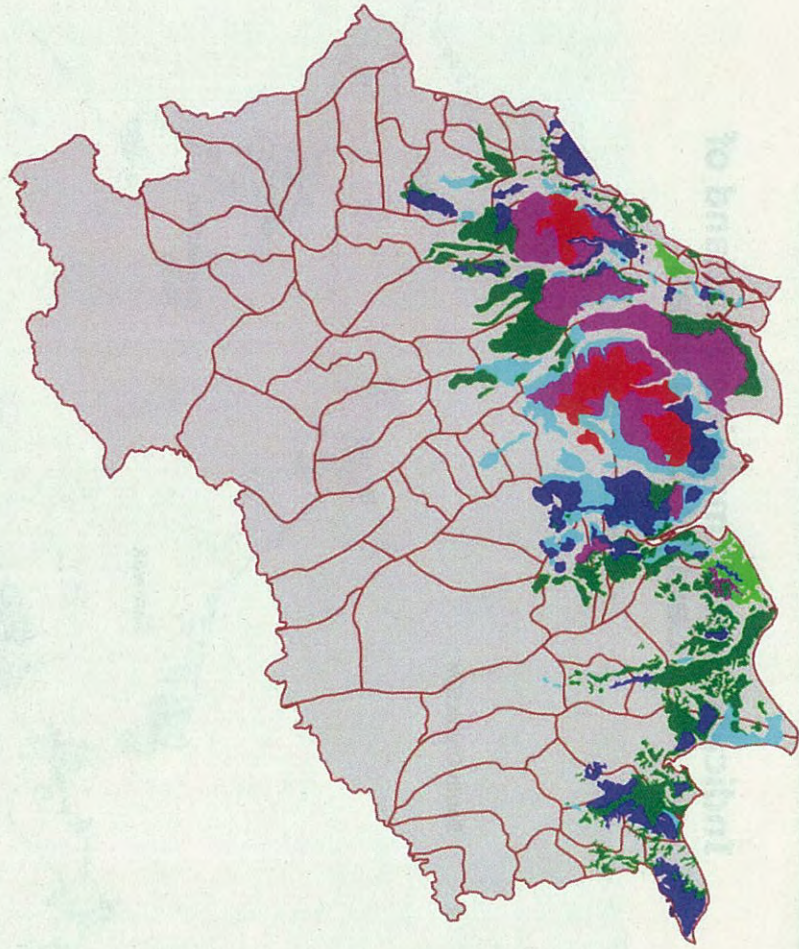
**Reprot Study (1993)**

**Area indicated 3.4 M Ha**



**Soil Research Center (2005)**

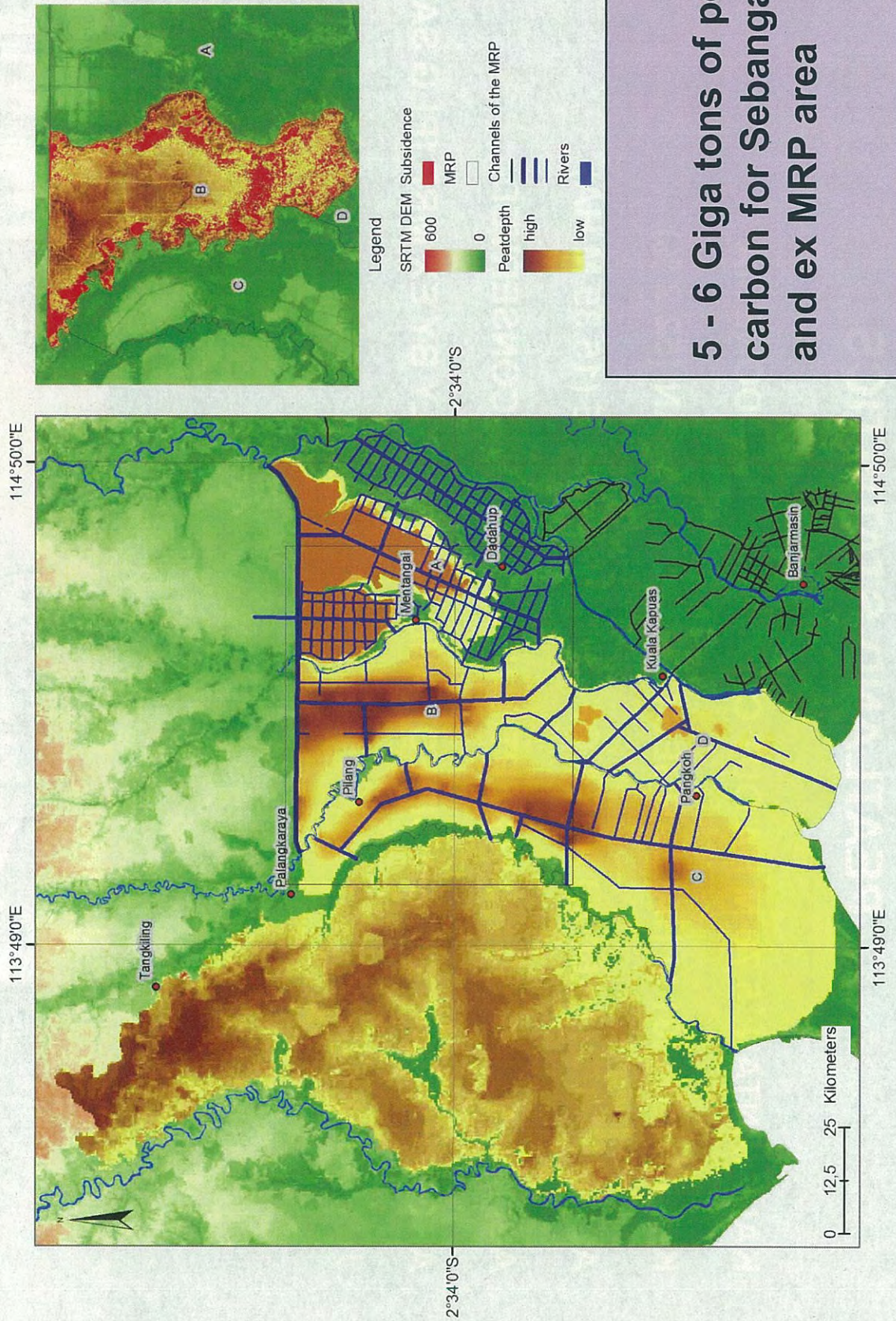
**Area indicated 3.01 M Ha**





# PEATDEPTH AND CARBON STORAGE

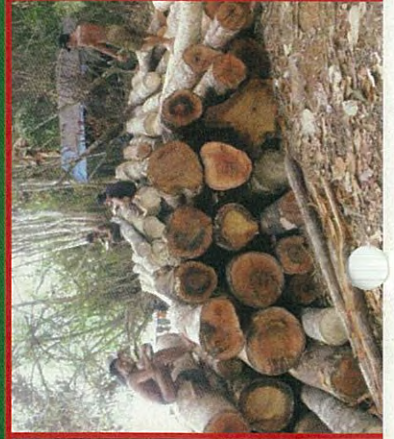
(Florian Siegert, University of Munich)





## PEATLAND STATISTICS

1. KALIMANTAN: 5.76 M HA OUT OF 20 M HA IN INDONESIA
2. KALTENG: 3.01 M HA, LARGEST IN KALIMANTAN (52.2 %)
3. ALMOST 1/5 (19.60 %) AREA OF THE PROVINCE (15.35 M HA)
4. ABOUT 1/3 WITH  $\Rightarrow$  3 M DEPTH, NEEDS TO BE CONSERVED
5. AROUND  $\frac{1}{2}$  AFFECTED DIRECT AND INDIRECTLY BY EX MRP (PLG SATU JUTA HA)





## CARBON STATISTICS

1. LARGEST CARBON STORAGE IN KALIMANTAN (56.34 %)
2. COUNT TO 6.35 GT, COMPARABLE TO ONE YEAR OF US CARBON EMISSION FROM FOSSIL FUEL (UNFCCC 1990)
3. STILL ACCUMULATING IN SEBANGAU AREA, QUESTIONABLE FOR EX MRP & SURROUNDINGS
4. LOCATED MAINLY ON 5 SOUTHERN DISTRICTS OF CENTRAL KALIMANTAN

