

DESCRIPTION OF ECONOMY OF CENTRAL KALIMANTAN

1. Significant increasing contribution of plantation sub sector to the formation of GRDP
2. The contribution has little impact on the total share of agriculture sector for the significant decreasing contribution of forestry
3. Business investment plan mostly intended to plantation sub sector
4. Large portion (61.11%) of productive population works in agriculture sector in general (foodcrops, livestock, plantation, fishery, forestry)

Income Per Capita (Rp)

Year	Current Price	Constant Price (Yr 2000)
(1)	(2)	(3)
2000	4.690.781	4.690.781
2001	5.143.664	4.721.579
2002	5.788.725	4.905.426
2003	6.259.908	5.011.323
2004	7.193.988	5.195.432

Exchange Rate US \$ ~ Rp.9.200,-

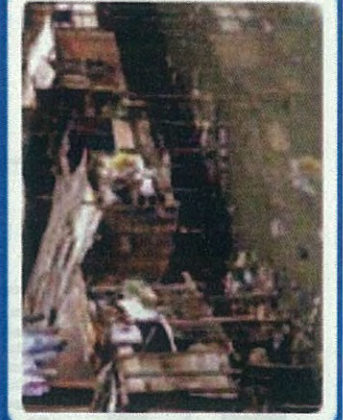
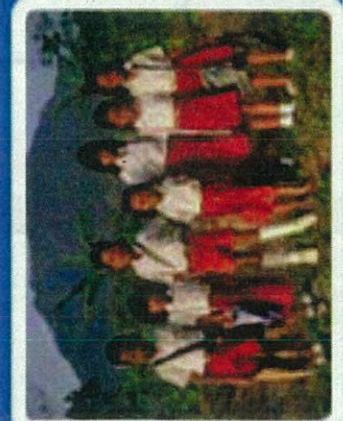
- Based on Current Price, Income per capita US \$ 782
- Based on Constant Price, Income per capita US \$ 565

STILL BELOW INTERNATIONAL STANDARD (US \$ 1.000)

Poverty Level

Population 2005: 1,935,699 (553,057 Households)

YEAR	POOR HH
2001	28,35 %
2002	28,48 %
2003	31,61 %
2004	27,70 %
2005	41,58 %*



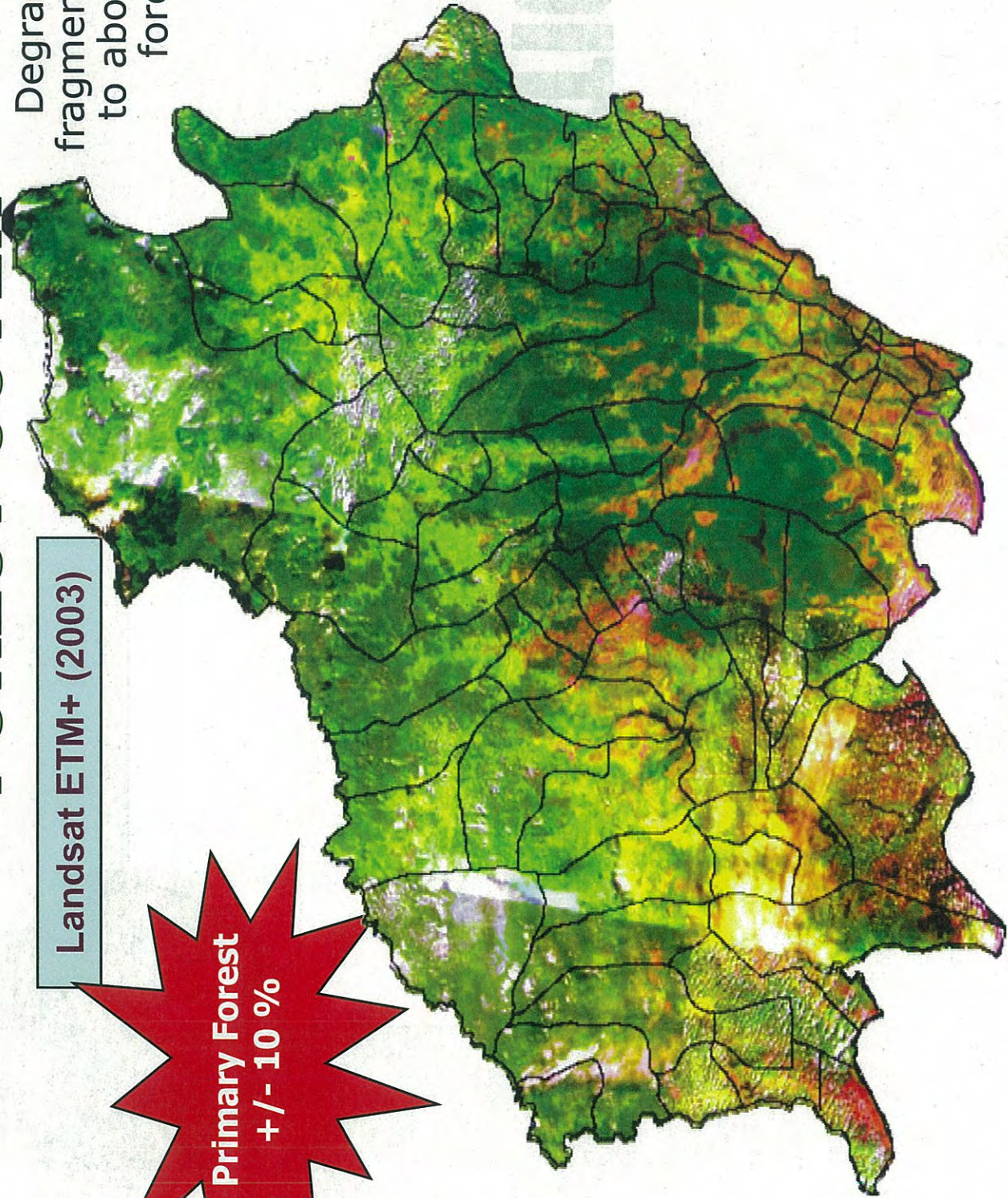
FORESTRY CONDITION



FOREST COVER

Degradation and fragmentation count to about 40 % of forest land

Landsat ETM+ (2003)



Primary Forest +/- 10 %

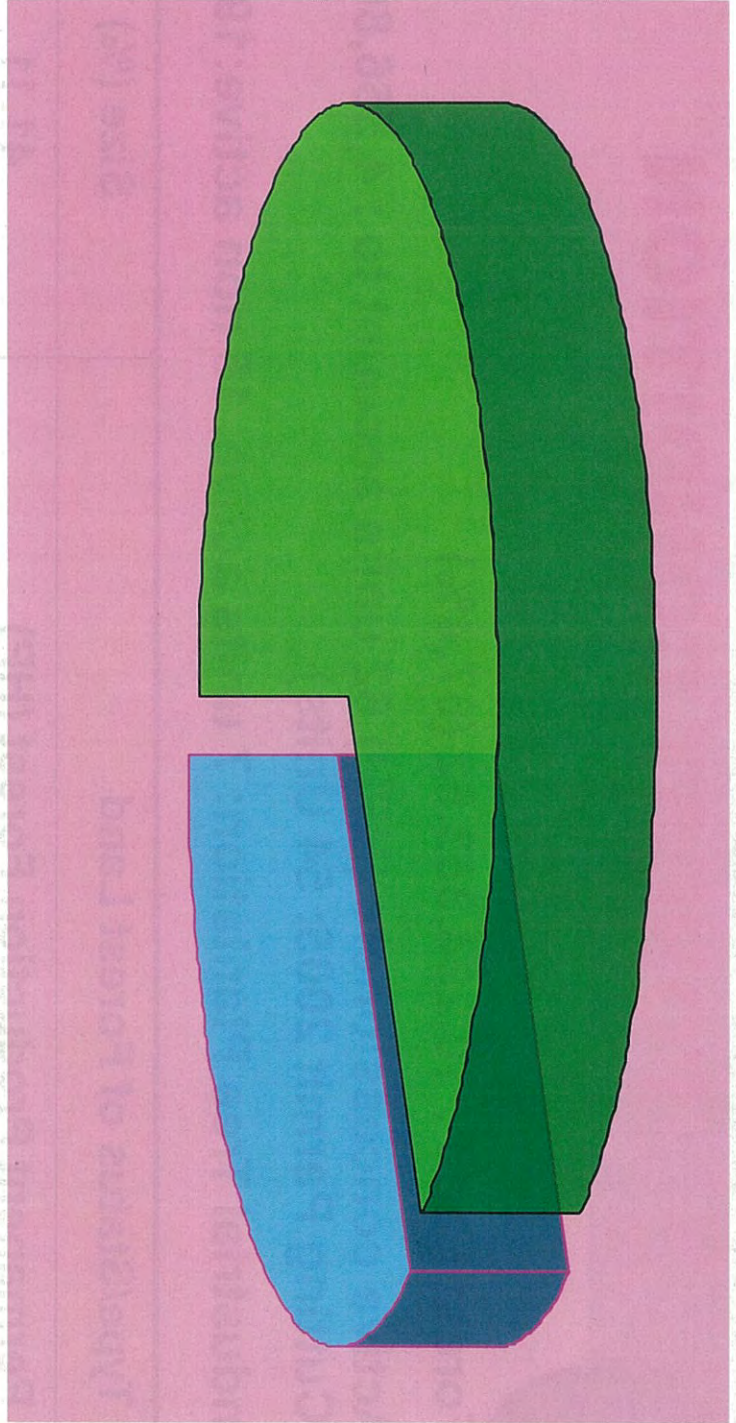
Land Use according to Provincial Spatial Plan (Local Ordinance No. 8 / 2003)



TOTAL: 15,356,700 Ha

**Non Forest Area
5,061,846.48 Ha
(32.96%)**

**Forest Land
10,294,853.52 Ha
(67.04%)**





FOREST CONDITION

Forest Land : 10,294,853.52 (67,4%)

**Active concessioners (HPH) 62 units account to : 4,556,863 Ha
(Cutting Permit 2005: 54 Units)**

Industrial Tree Plantation: 7 units active, 15 non active:193,315 Ha

Type/Status of Forest Land	Size (%)
Permanent Production Forest (HP)	41.11
Limited Production Forest (HPT)	36.76
Conservation Forest	14.42
Protection Forest	7.44
Industrial Tree Plantation Forest	0.21
Education and Research Forest	0.05