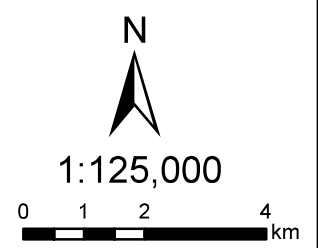


**FloodExtent2007  
(Flood Prone Area)**



**Legend**

- City
- Main Road
- +— Rail Way
- River
- Lake/Reservoir
- ▭ Upper Citarum River Basin Boundary
- ▭ Kabupaten/Kota Boundary
- ▭ Kecamatan Boundary
- ▭ Desa Boundary

**River Improvement Works  
by Japanese ODA Loan Projects**

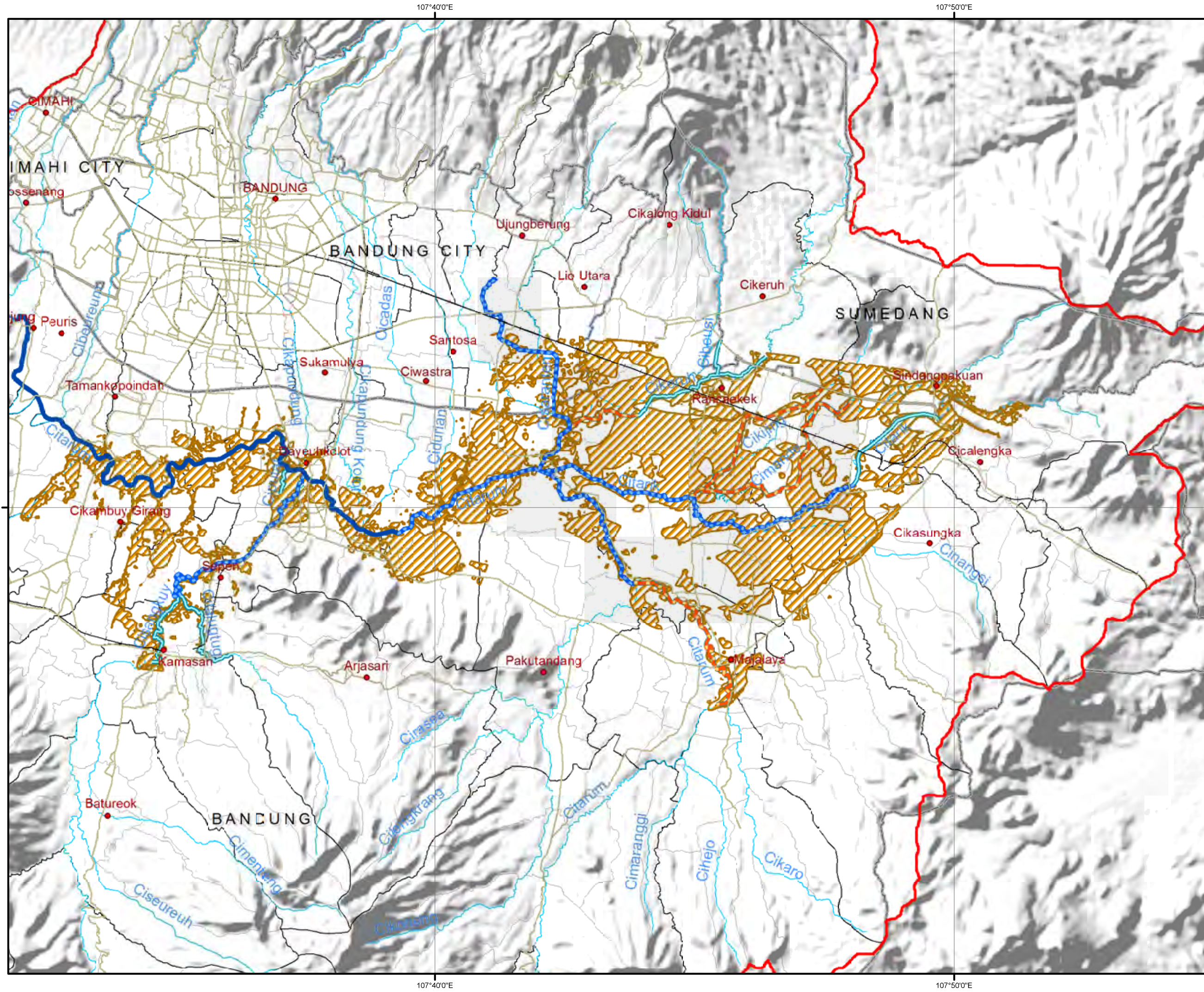
- Stage (I) (IP-405, 1994-1999)
- Stage (II) (IP-497, 1999-2007)
- Proposed Stage (III)  
based on 2007 D/D
- Proposed ODA Loan Project  
by Surver(2010)
- ▨ FloodExtent2007

Data Source :  
UCBFM, ICWRMIP, ADB(2010)

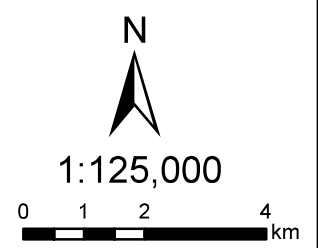


**The Preparatory  
Survey for Citarum  
Upper Basin  
Tributaries Flood  
Management Project**





**FloodExtent2010  
(Flood Prone Area)**



**Legend**

- City
- Main Road
- +— Rail Way
- River
- Lake/Reservoir
- Upper Citarum River Basin Boundary
- Kabupaten/Kota Boundary
- Kecamatan Boundary
- Desa Boundary

**River Improvement Works  
by Japanese ODA Loan Projects**

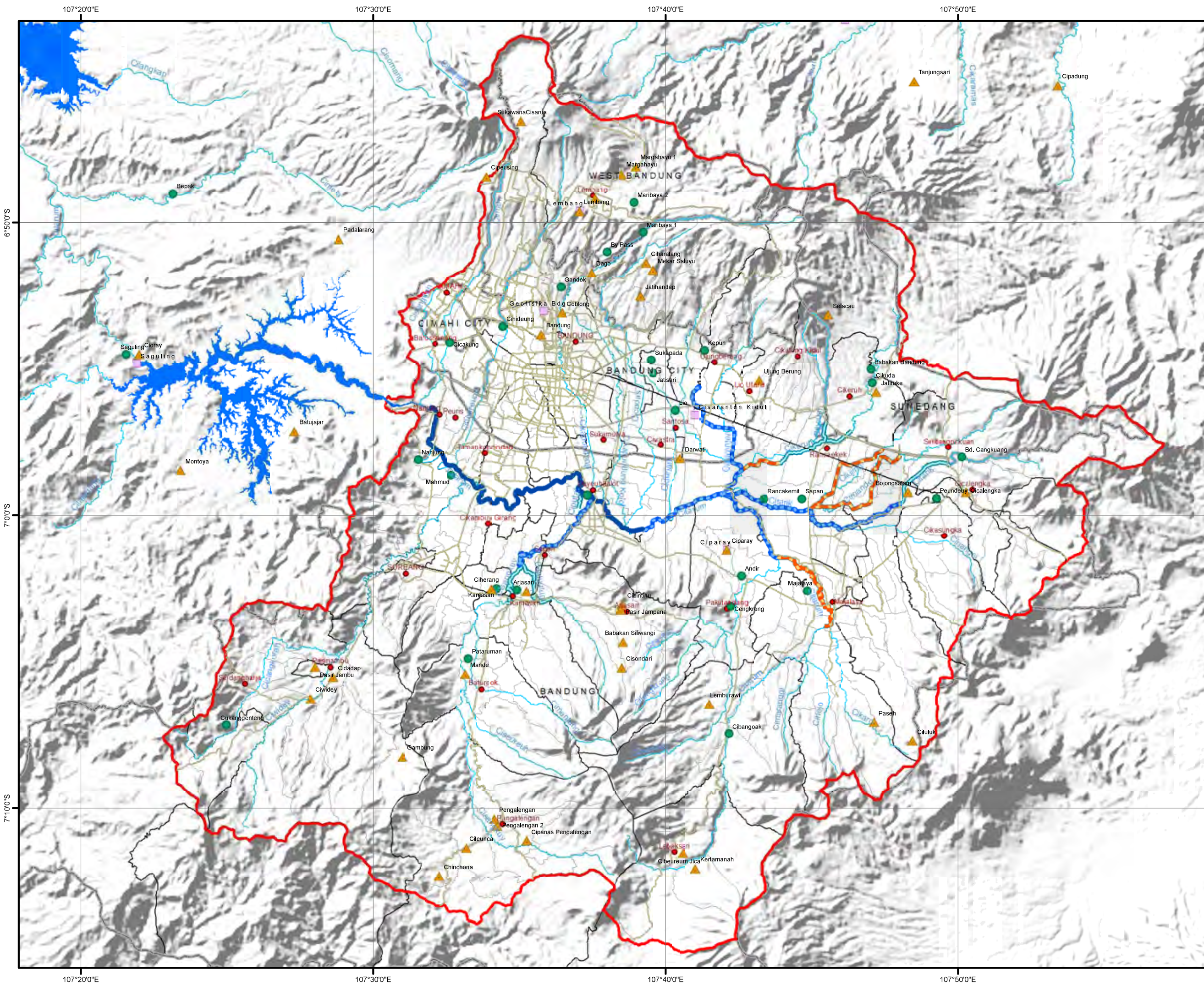
- Stage (I) (IP-405, 1994-1999)
- Stage (II) (IP-497, 1999-2007)
- Proposed Stage (III)  
based on 2007 D/D
- Proposed ODA Loan Project  
by Surver(2010)
- FloodExtent2010

Data Source :  
UCBFM, ICWRMIP, ADB(2010)

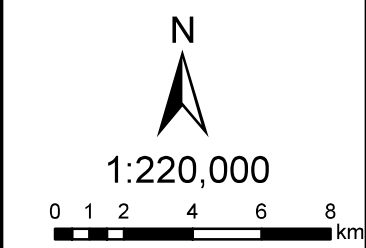


**The Preparatory  
Survey for Citarum  
Upper Basin  
Tributaries Flood  
Management Project**





**Observation Station**



- Legend**
- City
  - Main Road
  - +— Rail Way
  - River
  - Lake/Reservoir
  - ▭ Upper Citarum River Basin Boundary
  - ▭ Kabupaten/Kota Boundary
  - ▭ Kecamatan Boundary
  - ▭ Desa Boundary

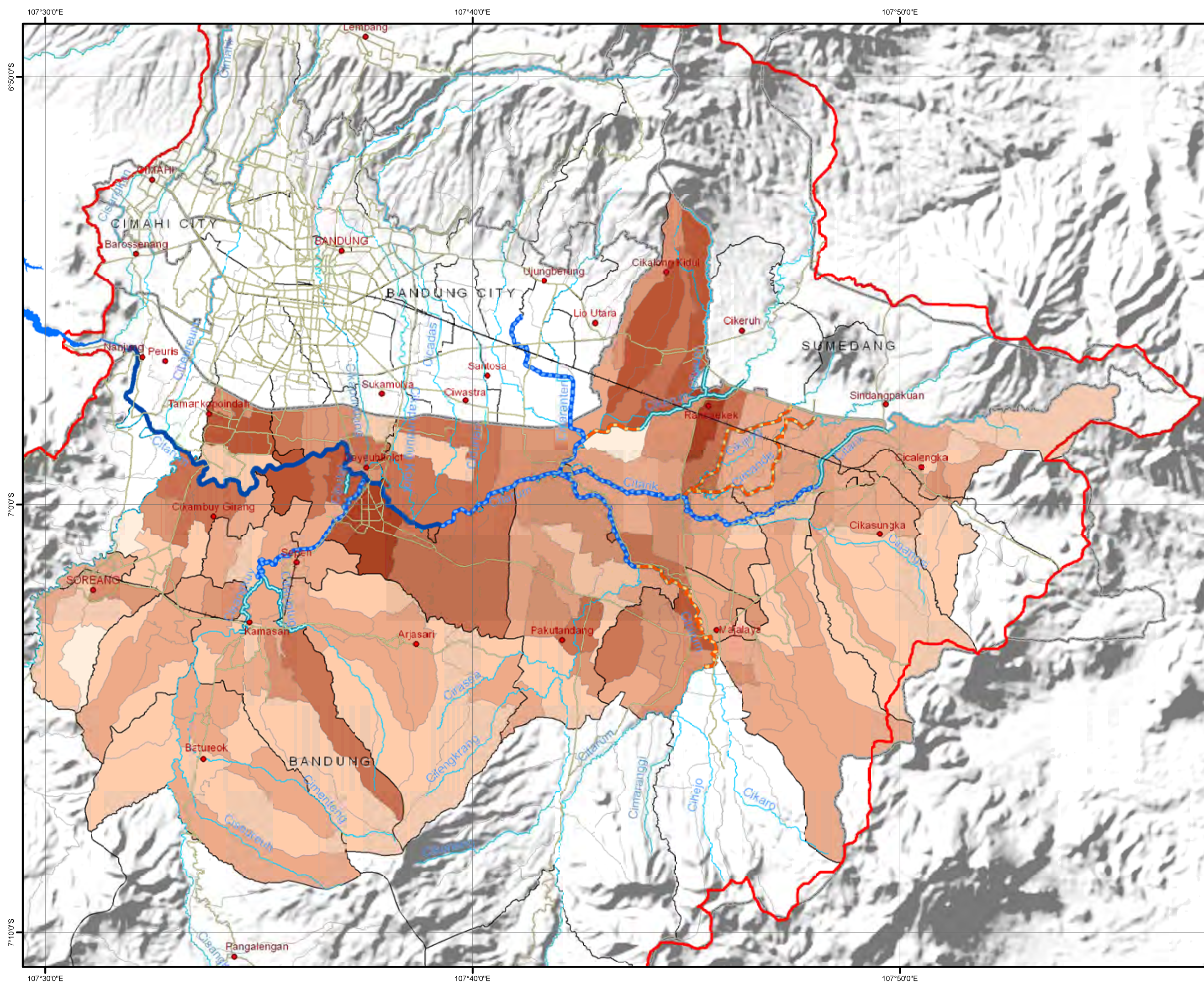
- River Improvement Works by Japanese ODA Loan Projects**
- Stage (I) (IP-405, 1994-1999)
  - Stage (II) (IP-497, 1999-2007)
  - Proposed Stage (III) based on 2007 D/D
  - Proposed ODA Loan Project by Surver(2010)
  - Climatology Station
  - Water level Station
  - ▲ Rainfall Station

Data Source :  
UCBFM, ICWRMIP, ADB(2010)

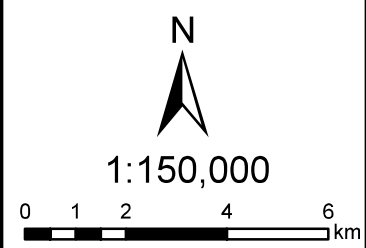


**The Preparatory Survey for Citarum Upper Basin Tributaries Flood Management Project**





**Number of Houses**



- Legend**
- City
  - Main Road
  - +— Rail Way
  - River
  - Lake/Reservoir
  - Upper Citarum River Basin Boundary
  - Kabupaten/Kota Boundary
  - Kecamatan Boundary
  - Desa Boundary

- River Improvement Works by Japanese ODA Loan Projects**
- Stage (I) (IP-405, 1994-1999)
  - Stage (II) (IP-497, 1999-2007)
  - Proposed Stage (III) based on 2007 D/D
  - Proposed ODA Loan Project by Surver(2010)

- HOUSES(Unit : number)**
- 1 - 1000
  - 1001 - 2000
  - 2001 - 3000
  - 3001 - 4000
  - 4001 - 5000
  - 5001 - 10000
  - 10001 -

**Data Source :**  
 Bakosurtanal(2006)  
 UCBFM,ICWRMIP,ADB(2010)

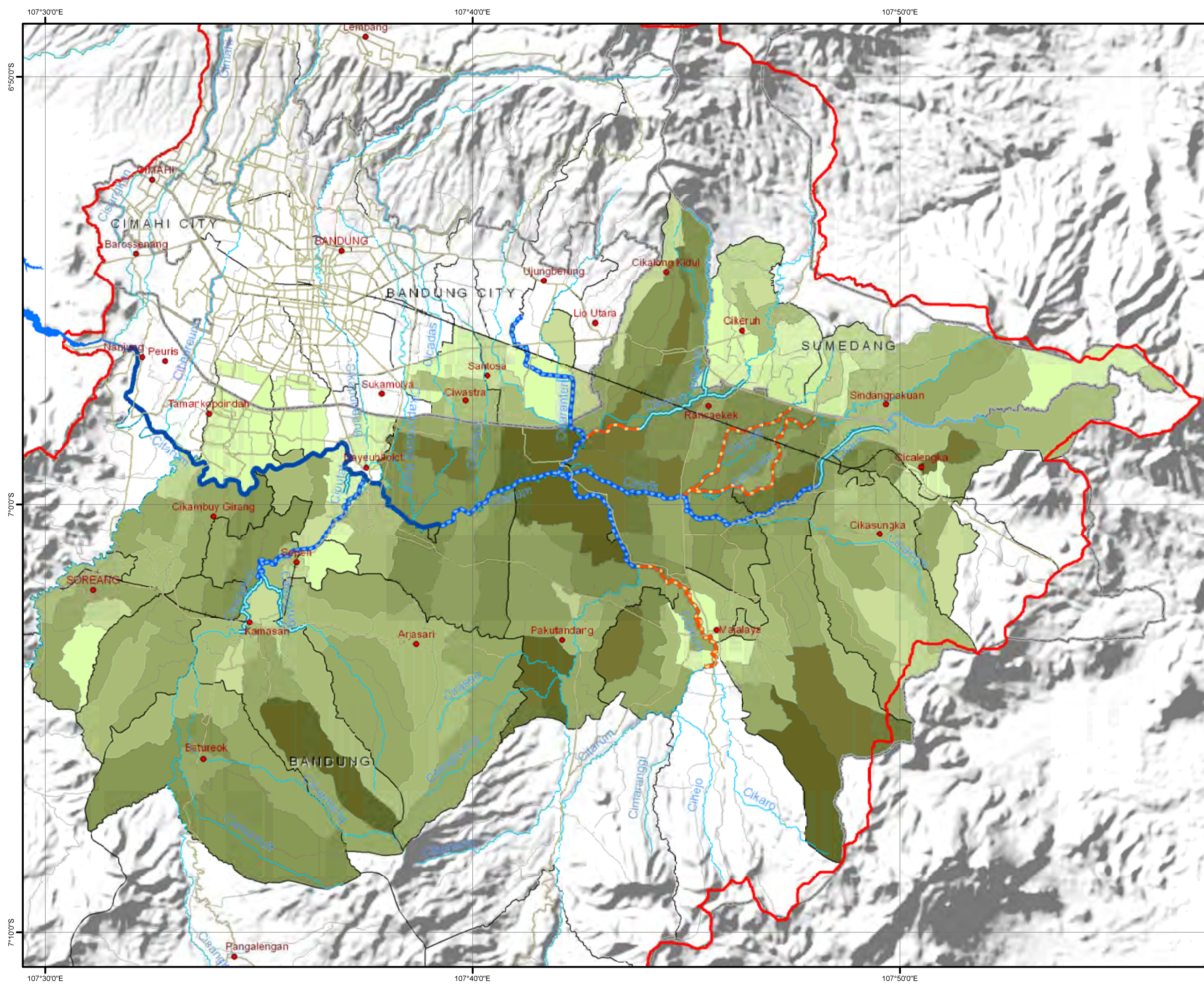


**The Preparatory Survey for Citarum Upper Basin Tributaries Flood Management Project**

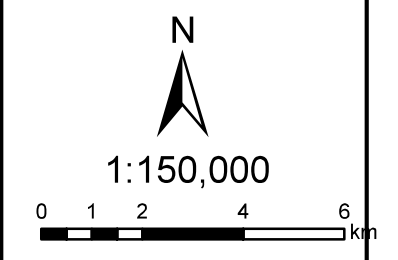
6°50'0"S  
7°0'0"S  
7°10'0"S

107°30'0"E  
107°40'0"E  
107°50'0"E





**Area of Paddy Field**



- Legend**
- City
  - Main Road
  - +— Rail Way
  - River
  - Lake/Reservoir
  - Upper Citarum River Basin Boundary
  - Kabupaten/Kota Boundary
  - Kecamatan Boundary
  - Desa Boundary

- River Improvement Works by Japanese ODA Loan Projects**
- Stage (I) (IP-405, 1994-1999)
  - Stage (II) (IP-497, 1999-2007)
  - Proposed Stage (III) based on 2007 D/D
  - Proposed ODA Loan Project by Surver(2010)

**PADDY (Unit: ha)**

0 - 25
26 - 50
51 - 100
101 - 200
201 - 300
301 - 400
401 - 630

**Data Source :**  
 Bakosurtanal(2006)  
 UCBFM,ICWRMIP,ADB(2010)



**The Preparatory Survey for Citarum Upper Basin Tributaries Flood Management Project**

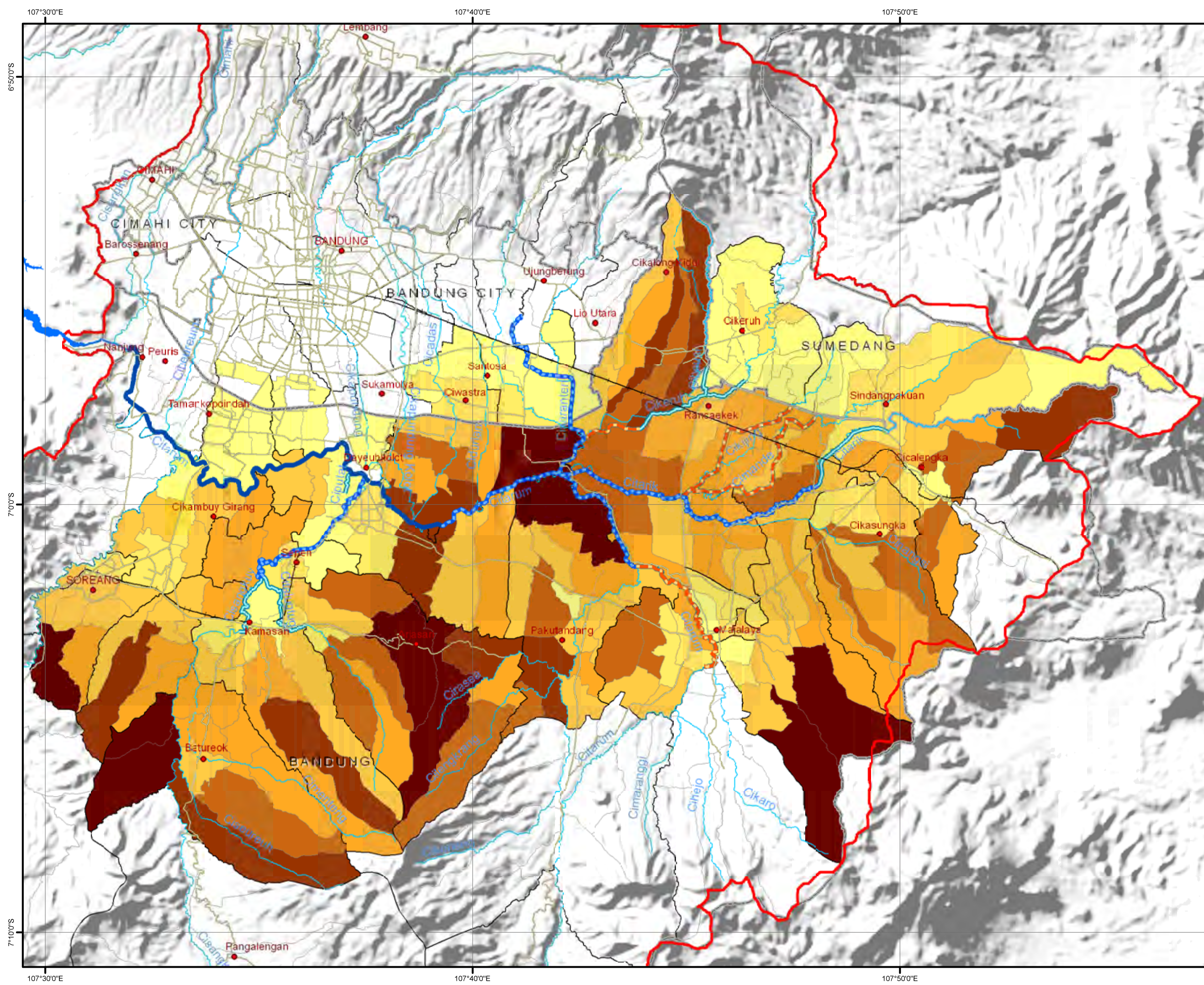
6°50'0"S  
7°0'0"S  
7°10'0"S

107°30'0"E  
107°40'0"E  
107°50'0"E

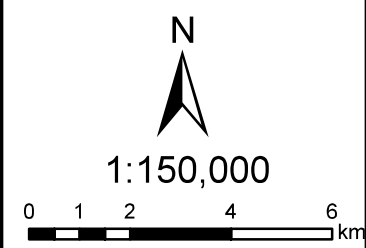
107°30'0"E  
107°40'0"E  
107°50'0"E

6°50'0"S  
7°0'0"S  
7°10'0"S



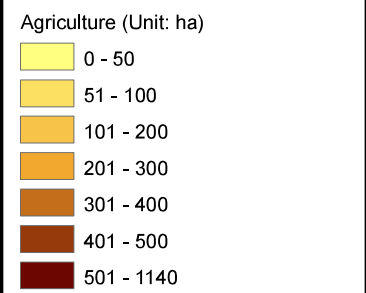


**Area of Agriculture**



- Legend**
- City
  - Main Road
  - +— Rail Way
  - River
  - Lake/Reservoir
  - Upper Citarum River Basin Boundary
  - Kabupaten/Kota Boundary
  - Kecamatan Boundary
  - Desa Boundary

- River Improvement Works by Japanese ODA Loan Projects**
- Stage (I) (IP-405, 1994-1999)
  - Stage (II) (IP-497, 1999-2007)
  - Proposed Stage (III) based on 2007 D/D
  - Proposed ODA Loan Project by Surver(2010)



**Data Source :**  
 Bakosurtanal(2006)  
 UCBFM,ICWRMIP,ADB(2010)

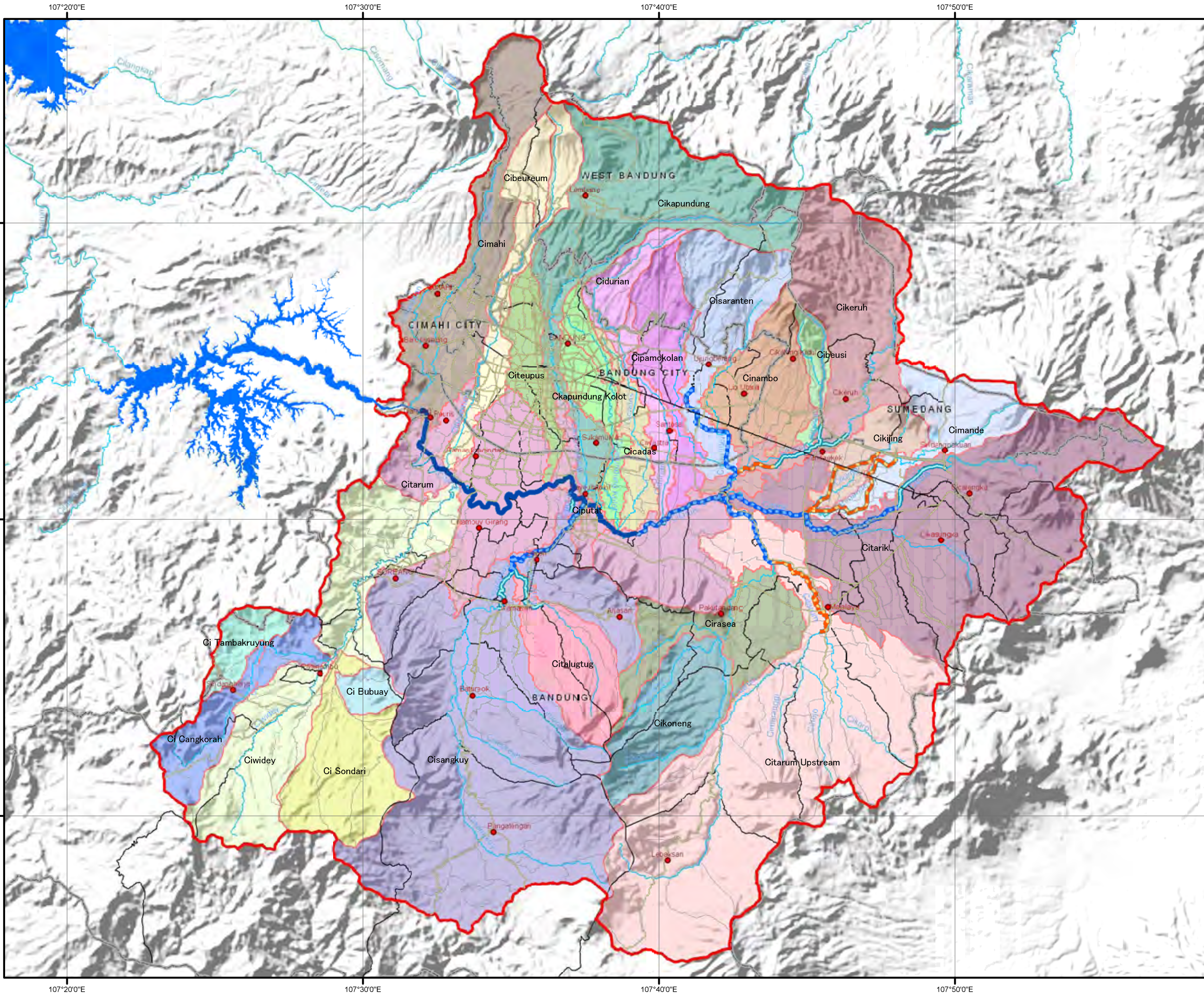


**The Preparatory Survey for Citarum Upper Basin Tributaries Flood Management Project**

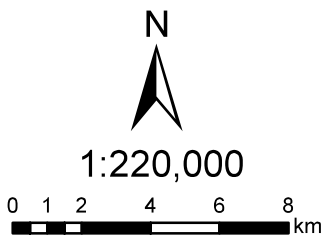
6°50'0"S  
7°0'0"S  
7°10'0"S

107°30'0"E  
107°40'0"E  
107°50'0"E





**CatchmentArea**



**Legend**

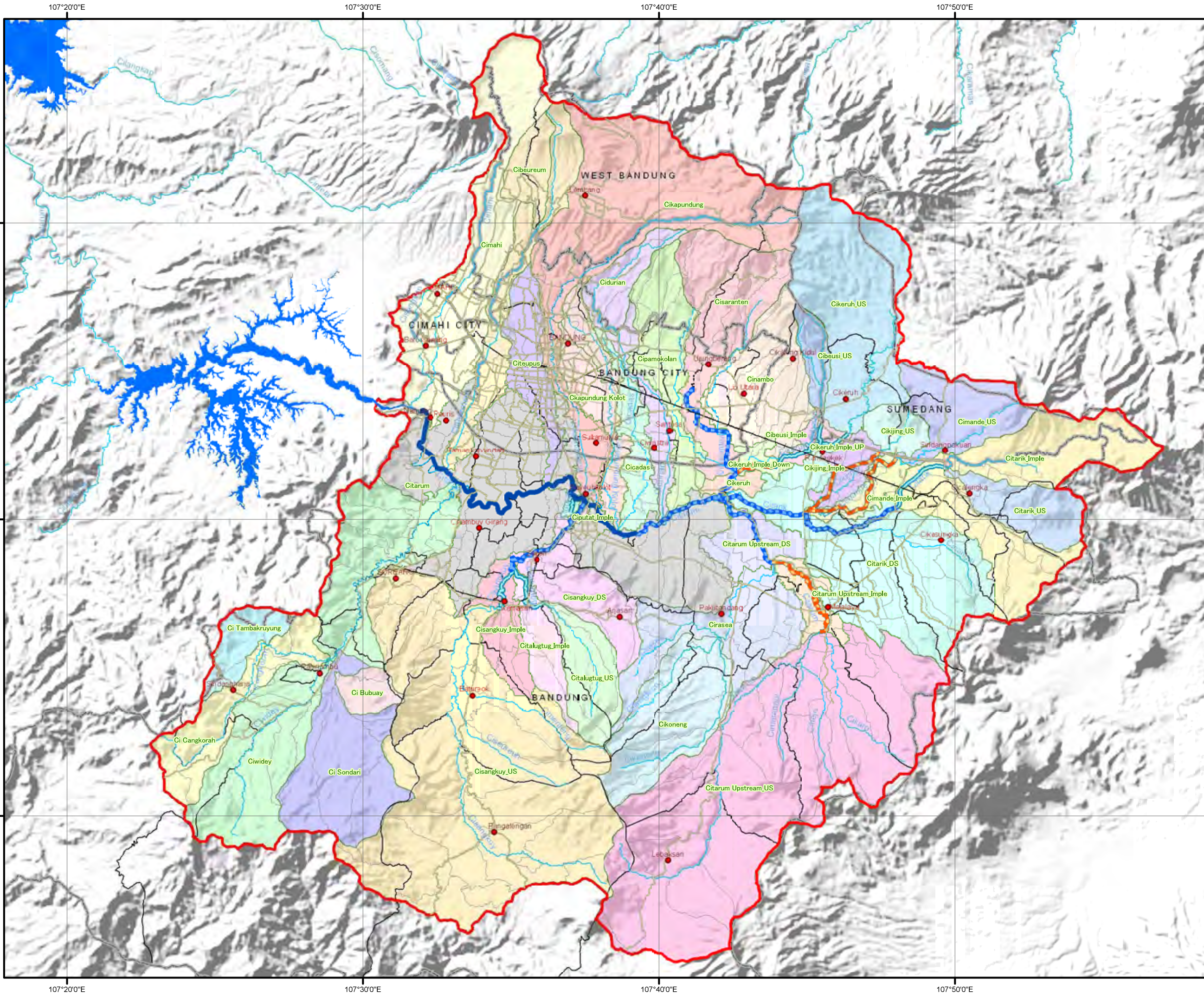
- City
  - Main Road
  - +— Rail Way
  - River
  - Lake/Reservoir
  - Upper Citarum River Basin Boundary
  - Kabupaten/Kota Boundary
  - Kecamatan Boundary
  - Desa Boundary
- River Improvement Works by Japanese ODA Loan Projects**
- Stage (I) (IP-405, 1994-1999)
  - Stage (II) (IP-497, 1999-2007)
  - Proposed Stage (III) based on 2007 D/D
  - Proposed ODA Loan Project by Surver(2010)
- CatchmentArea

Data Source :  
UCBFM, ICWRMIP, ADB(2010)

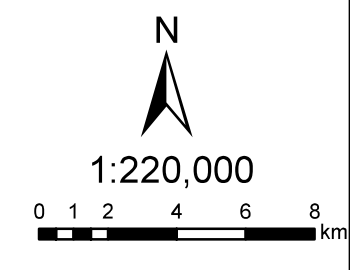


**The Preparatory Survey for Citarum Upper Basin Tributaries Flood Management Project**





**CatchmentArea Segment Division**



- Legend**
- City
  - Main Road
  - +— Rail Way
  - River
  - Lake/Reservoir
  - ▭ Upper Citarum River Basin Boundary
  - ▭ Kabupaten/Kota Boundary
  - ▭ Kecamatan Boundary
  - ▭ Desa Boundary

- River Improvement Works by Japanese ODA Loan Projects**
- Stage (I) (IP-405, 1994-1999)
  - Stage (II) (IP-497, 1999-2007)
  - Proposed Stage (III) based on 2007 D/D
  - Proposed ODA Loan Project by Surver(2010)
- CatchmentArea Segment Division

Data Source :  
UCBFM, ICWRMIP, ADB(2010)



**The Preparatory Survey for Citarum Upper Basin Tributaries Flood Management Project**