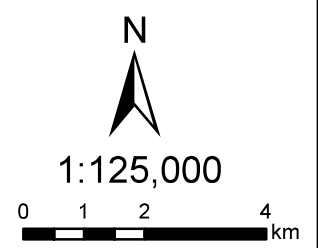


**River Network  
(Flood Prone Area)**



**Legend**

- City
- Main Road
- +— Rail Way
- River
- Lake/Reservoir
- Upper Citarum River Basin Boundary
- Kabupaten/Kota Boundary
- Kecamatan Boundary
- Desa Boundary

**River Improvement Works  
by Japanese ODA Loan Projects**

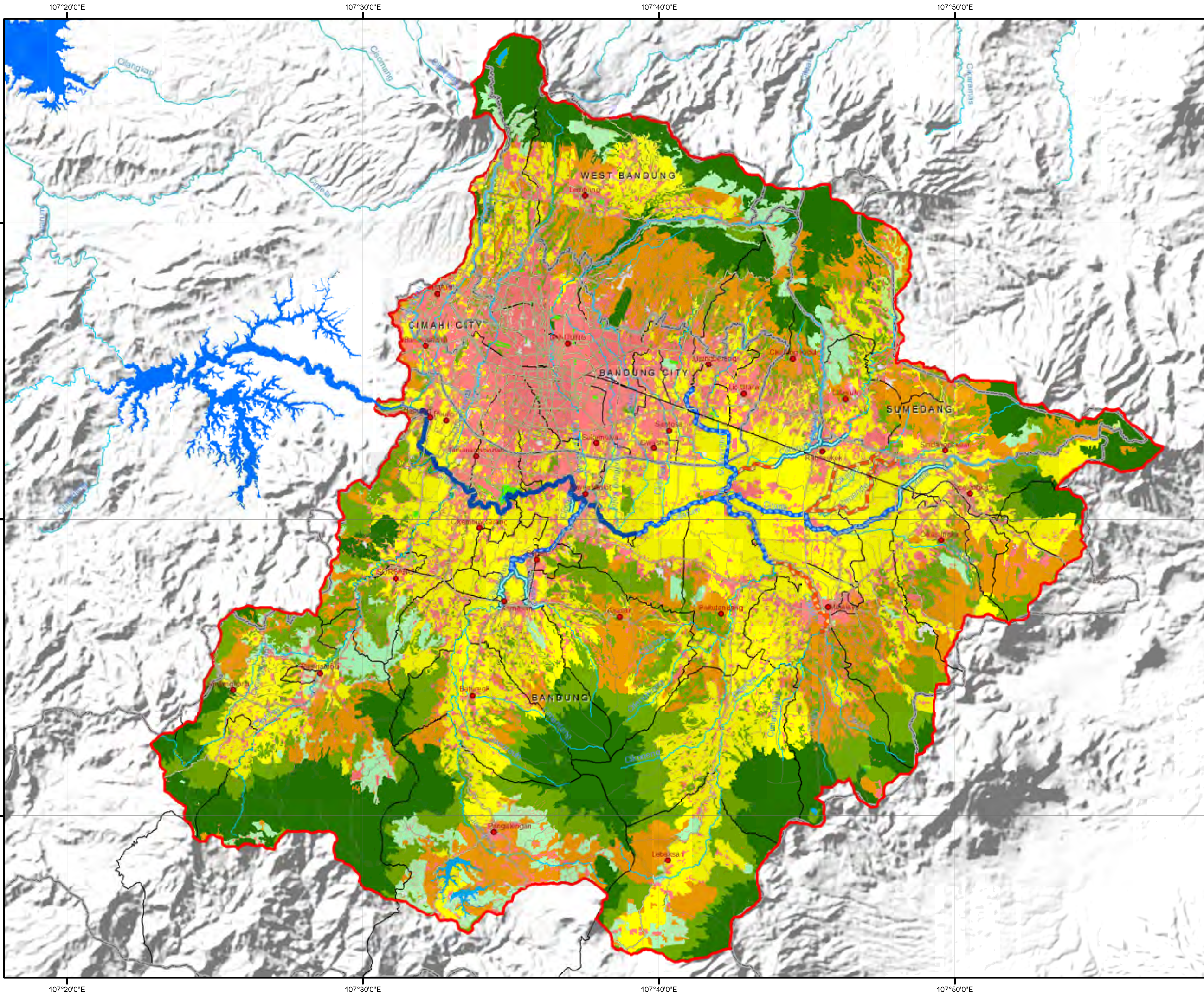
- Stage (I) (IP-405, 1994-1999)
- - - Stage (II) (IP-497, 1999-2007)
- · · Proposed Stage (III)  
based on 2007 D/D
- - - Proposed ODA Loan Project  
by Surver(2010)

Data Source :  
UCBFM, ICWRMIP, ADB(2010)



**The Preparatory  
Survey for Citarum  
Upper Basin  
Tributaries Flood  
Management Project**





**Land Use**

N

1:220,000

0 1 2 4 6 8 km

- Legend**
- City
  - Main Road
  - +— Rail Way
  - River
  - Lake/Reservoir
  - Upper Citarum River Basin Boundary
  - Kabupaten/Kota Boundary
  - Kecamatan Boundary
  - Desa Boundary

- River Improvement Works by Japanese ODA Loan Projects**
- Stage (I) (IP-405, 1994-1999)
  - Stage (II) (IP-497, 1999-2007)
  - Proposed Stage (III) based on 2007 D/D
  - Proposed ODA Loan Project by Surver(2010)

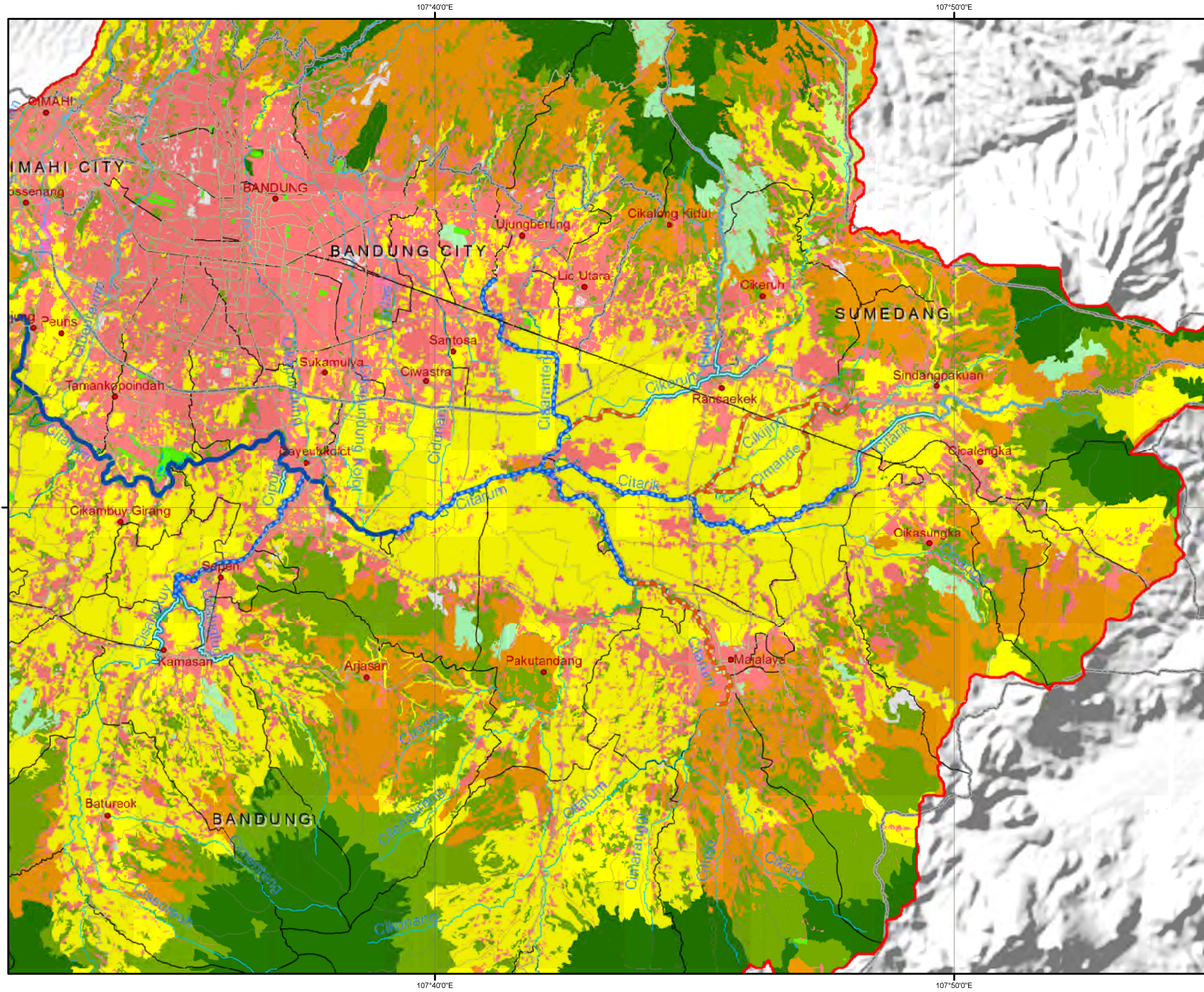
- Land Use**
- Barrenland
  - Bush
  - Dry crops
  - Estate
  - Forest
  - Grass
  - Rice Irrigation
  - Rice rainfed
  - River/Lake
  - Settlement
  - Swamp

**Data Source :**  
 Bakosurtanal(2006)  
 UCBFM,ICWRMIP,ADB(2010)

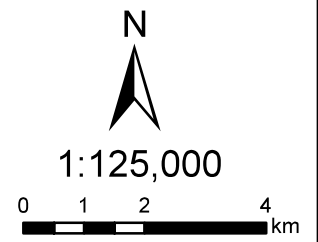
**jica** Japan International Cooperation Agency

**The Preparatory Survey for Citarum Upper Basin Tributaries Flood Management Project**





**Land Use  
(Flood Prone Area)**



**Legend**

- City
- Main Road
- +— Rail Way
- River
- Lake/Reservoir
- ▭ Upper Citarum River Basin Boundary
- ▭ Kabupaten/Kota Boundary
- ▭ Kecamatan Boundary
- ▭ Desa Boundary

**River Improvement Works  
by Japanese ODA Loan Projects**

- Stage (I) (IP-405, 1994-1999)
- Stage (II) (IP-497, 1999-2007)
- Proposed Stage (III)  
based on 2007 D/D
- Proposed ODA Loan Project  
by Surver(2010)

**Land Use**

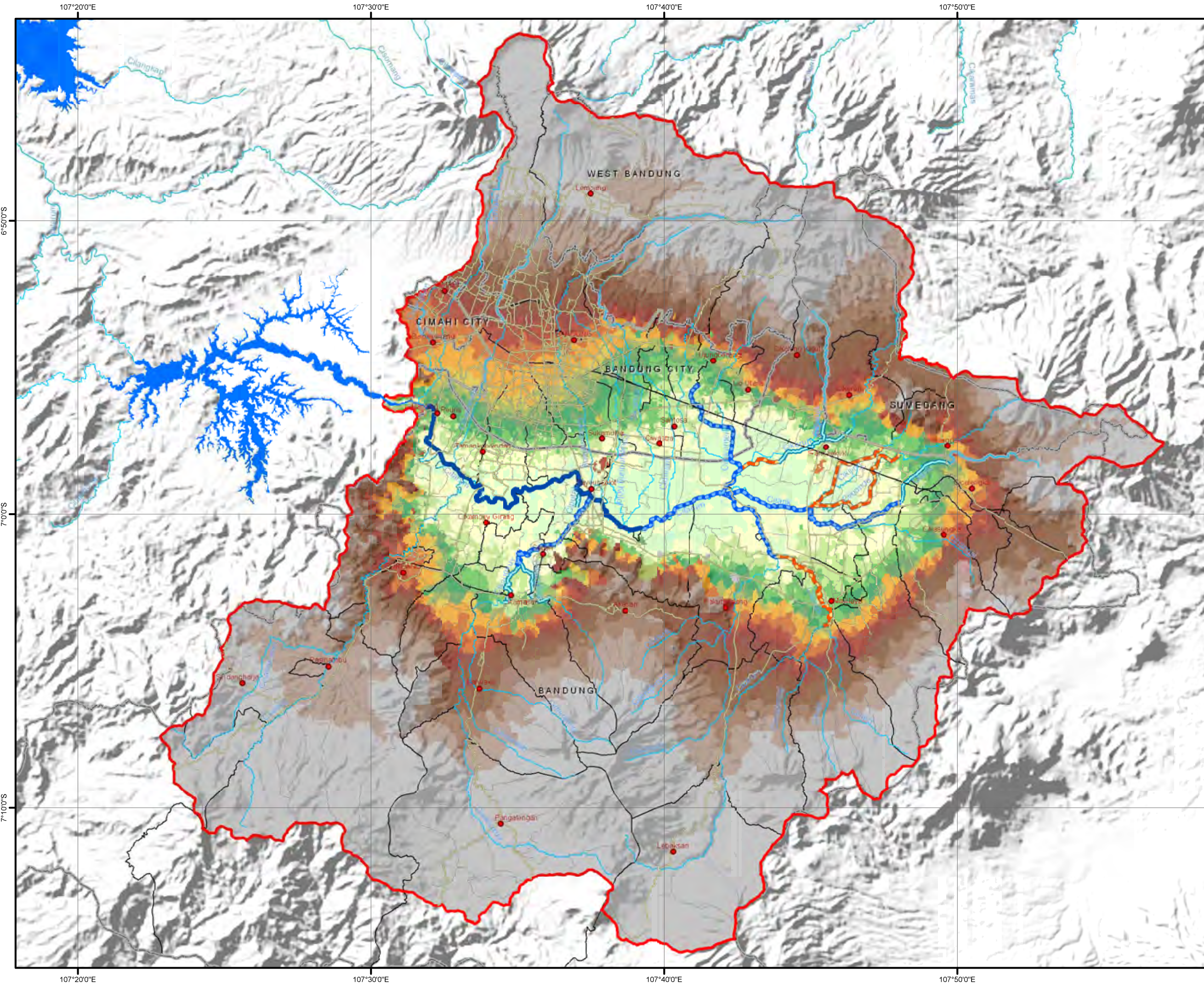
- ▭ Barrenland
- ▭ Bush
- ▭ Dry crops
- ▭ Estate
- ▭ Forest
- ▭ Grass
- ▭ Rice Irrigation
- ▭ Rice rainfed
- ▭ River/Lake
- ▭ Settlement
- ▭ Swamp

**Data Source :**  
Bakosurtanal(2006)  
UCBFM,ICWRMIP,ADB(2010)



**The Preparatory  
Survey for Citarum  
Upper Basin  
Tributaries Flood  
Management Project**





### Elevation

N

1:220,000

0 1 2 4 6 8 km

---

#### Legend

- City
- Main Road
- Rail Way
- River
- Lake/Reservoir
- Upper Citarum River Basin Boundary
- Kabupaten/Kota Boundary
- Kecamatan Boundary
- Desa Boundary

---

#### River Improvement Works by Japanese ODA Loan Projects

- Stage (I) (IP-405, 1994-1999)
- Stage (II) (IP-497, 1999-2007)
- Proposed Stage (III) based on 2007 D/D
- Proposed ODA Loan Project by Surver(2010)

---

#### Elevation(Unit : m)

	650 - 655		701 - 720
	656 - 660		721 - 740
	661 - 665		741 - 760
	666 - 670		761 - 780
	671 - 675		781 - 800
	676 - 680		801 - 850
	681 - 685		851 - 900
	686 - 690		901 - 1000
	691 - 695		1001 - 1200
	696 - 700		1201 -

---

**Data Source :**  
UCBFM,ICWRMIP,ADB(2010)

---

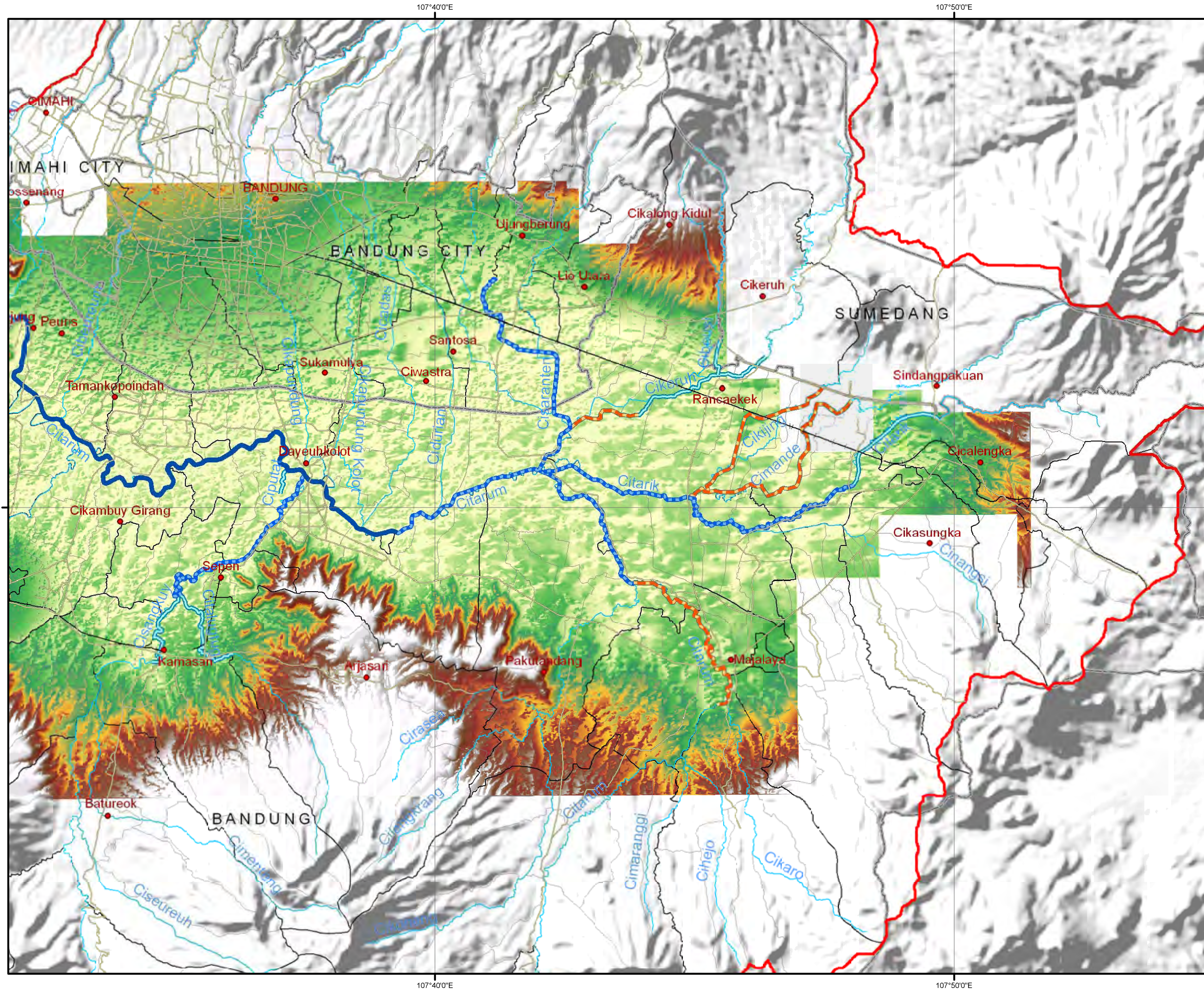
Japan International Cooperation Agency

**The Preparatory Survey for Citarum Upper Basin Tributaries Flood Management Project**

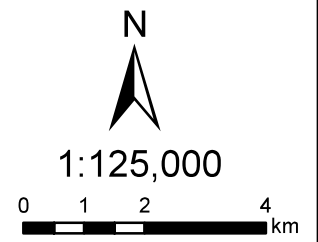
107°20'0"E      107°30'0"E      107°40'0"E      107°50'0"E

6°50'0"S  
7°0'0"S  
7°10'0"S





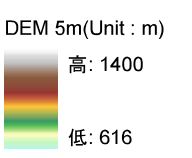
**Elevation  
(Flood Prone Area)**



**Legend**

- City
- Main Road
- +— Rail Way
- River
- Lake/Reservoir
- ▭ Upper Citarum River Basin Boundary
- ▭ Kabupaten/Kota Boundary
- ▭ Kecamatan Boundary
- ▭ Desa Boundary

- River Improvement Works  
by Japanese ODA Loan Projects**
- Stage (I) (IP-405, 1994-1999)
  - Stage (II) (IP-497, 1999-2007)
  - Proposed Stage (III)  
based on 2007 D/D
  - Proposed ODA Loan Project  
by Surver(2010)

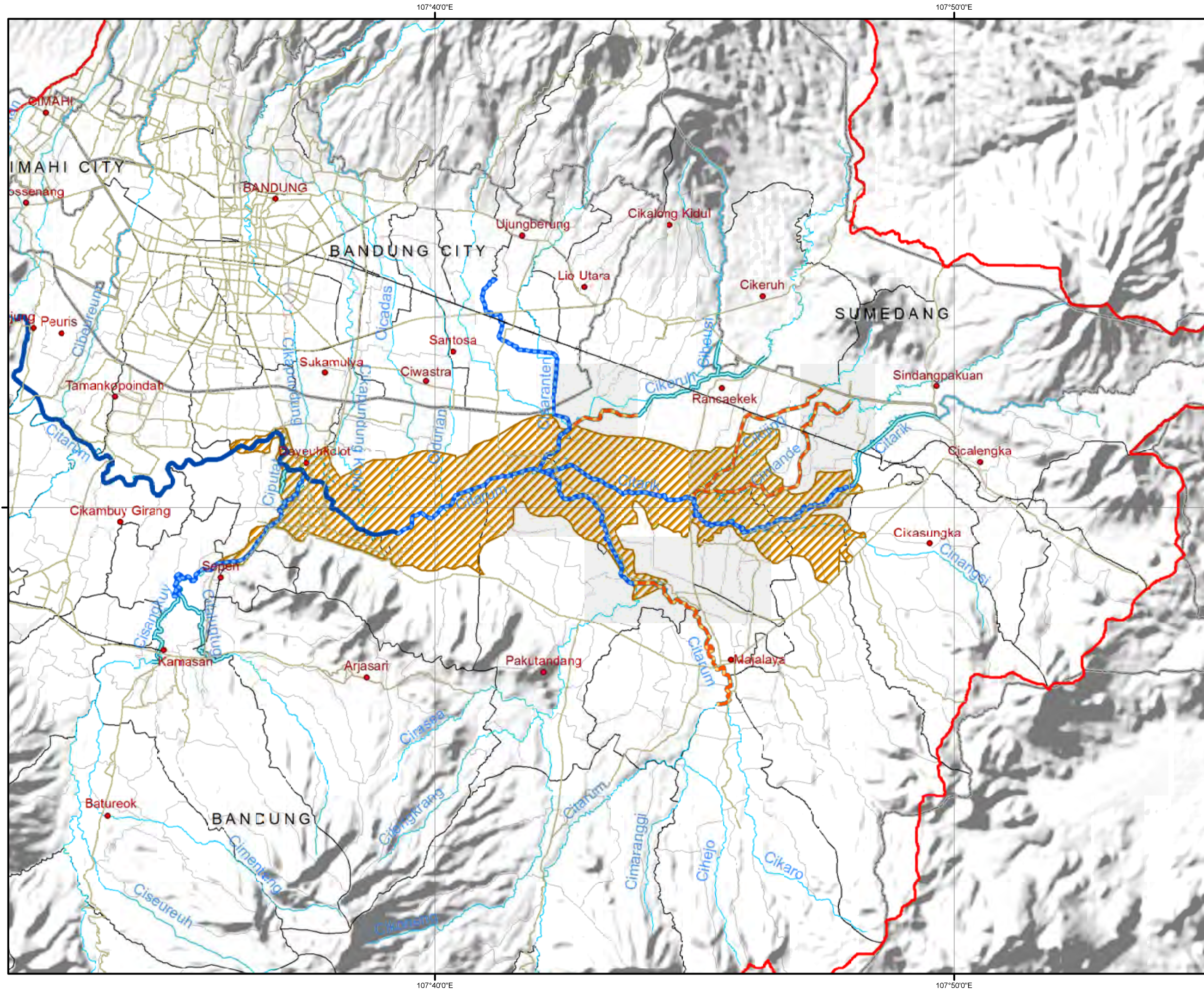


Data Source :  
UCBFM,ICWRMIP,ADB(2010)

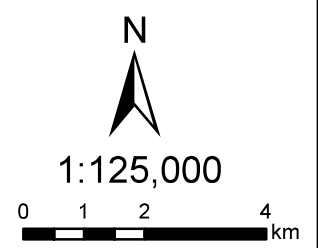


**The Preparatory  
Survey for Citarum  
Upper Basin  
Tributaries Flood  
Management Project**





**FloodExtent1986  
(Flood Prone Area)**



**Legend**

- City
- Main Road
- +— Rail Way
- River
- Lake/Reservoir
- Upper Citarum River Basin Boundary
- Kabupaten/Kota Boundary
- Kecamatan Boundary
- Desa Boundary

**River Improvement Works  
by Japanese ODA Loan Projects**

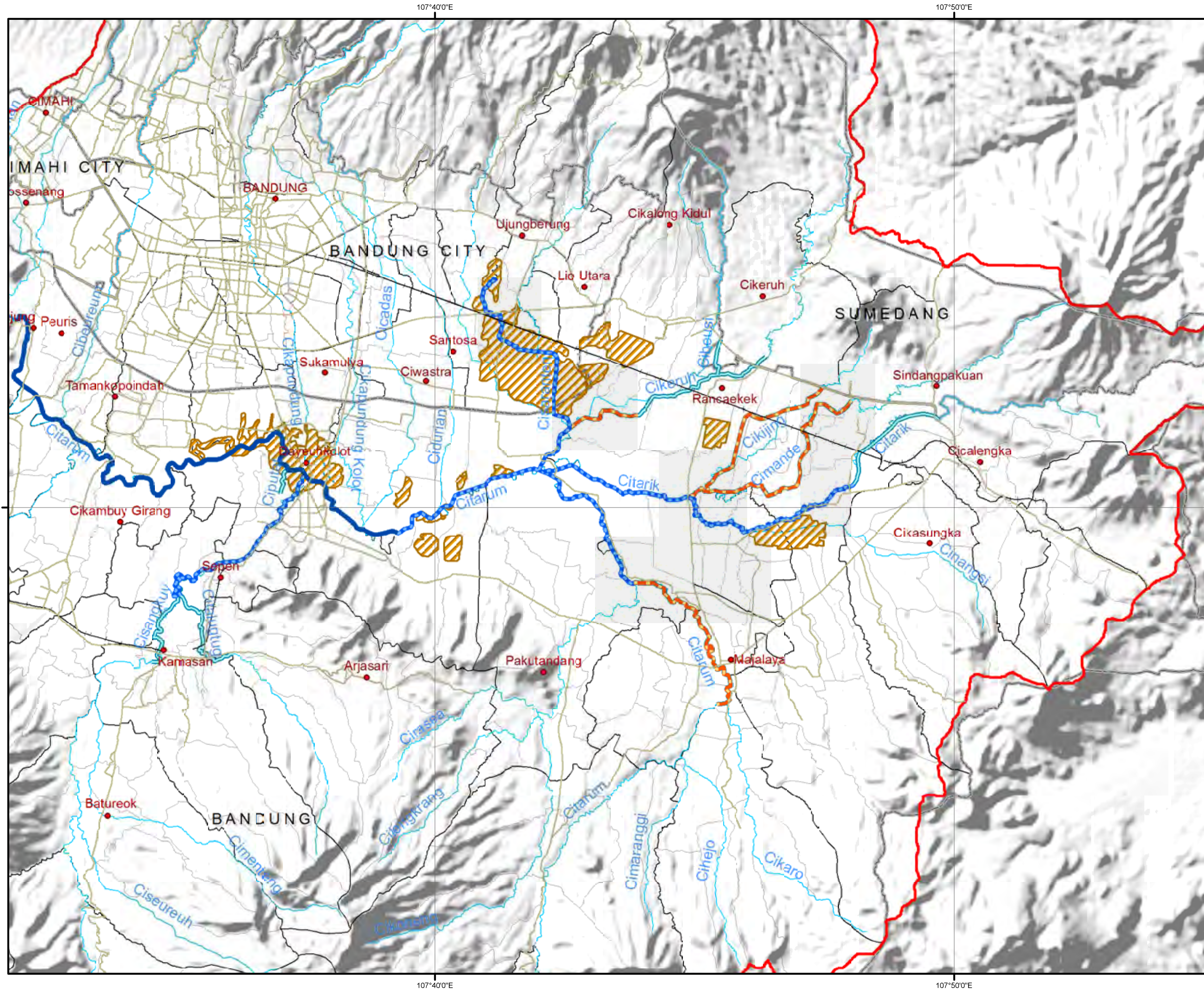
- Stage (I) (IP-405, 1994-1999)
- Stage (II) (IP-497, 1999-2007)
- Proposed Stage (III)  
based on 2007 D/D
- Proposed ODA Loan Project  
by Surver(2010)
- FloodExtent1986

Data Source :  
UCBFM, ICWRMIP, ADB(2010)

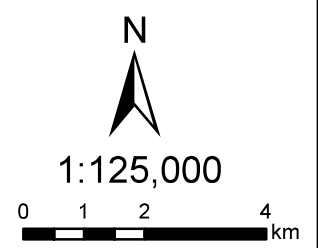


**The Preparatory  
Survey for Citarum  
Upper Basin  
Tributaries Flood  
Management Project**





**FloodExtent2005  
(Flood Prone Area)**



**Legend**

- City
- Main Road
- +— Rail Way
- River
- Lake/Reservoir
- ▭ Upper Citarum River Basin Boundary
- ▭ Kabupaten/Kota Boundary
- ▭ Kecamatan Boundary
- ▭ Desa Boundary

**River Improvement Works  
by Japanese ODA Loan Projects**

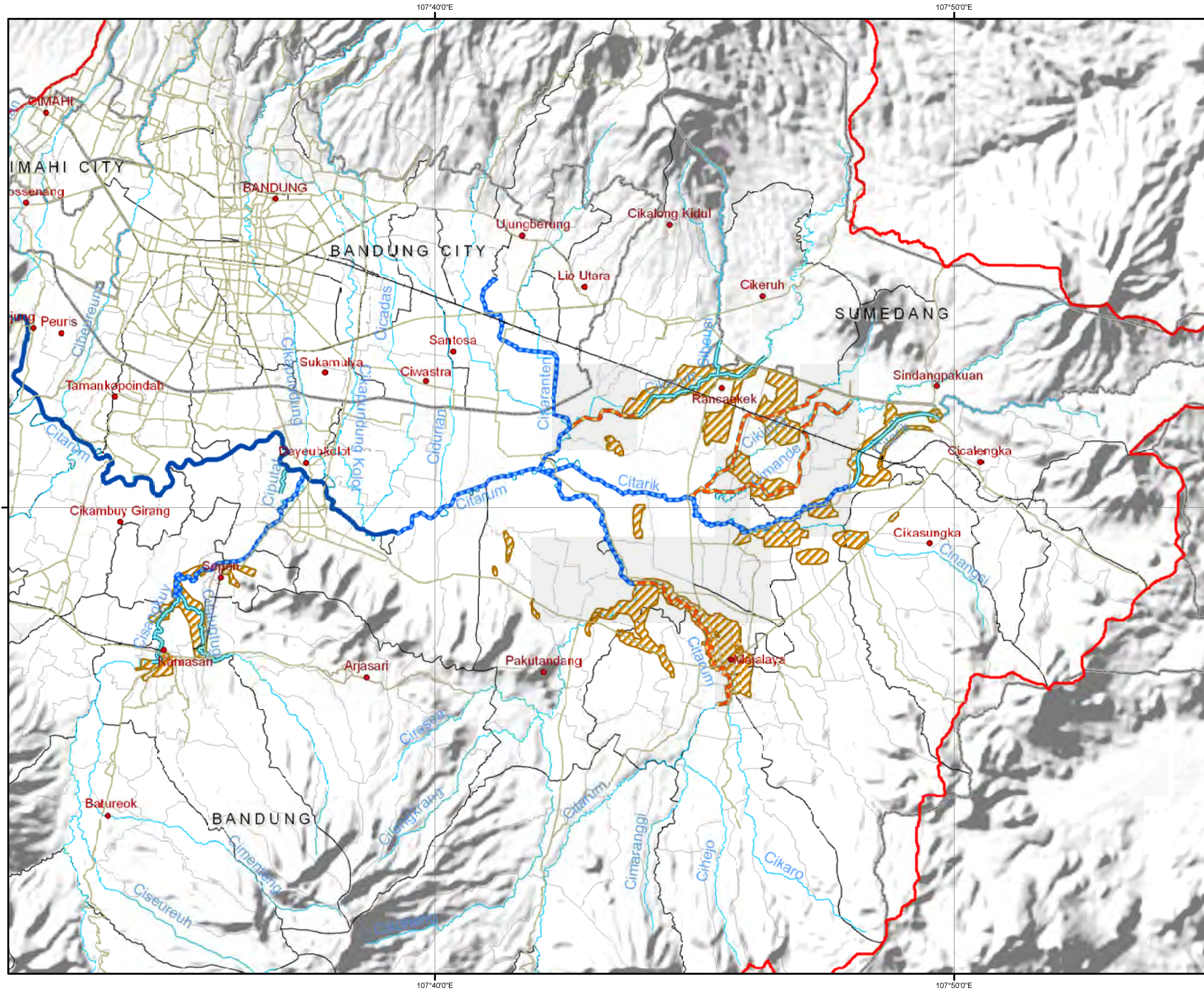
- Stage (I) (IP-405, 1994-1999)
- Stage (II) (IP-497, 1999-2007)
- Proposed Stage (III)  
based on 2007 D/D
- Proposed ODA Loan Project  
by Surver(2010)
- ▨ FloodExtent2005

Data Source :  
UCBFM, ICWRMIP, ADB(2010)

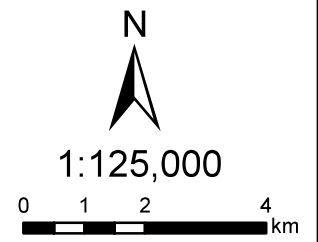


**The Preparatory  
Survey for Citarum  
Upper Basin  
Tributaries Flood  
Management Project**





**FloodExtent2006  
(Flood Prone Area)**



**Legend**

- City
- Main Road
- +— Rail Way
- River
- Lake/Reservoir
- ▭ Upper Citarum River Basin Boundary
- ▭ Kabupaten/Kota Boundary
- ▭ Kecamatan Boundary
- ▭ Desa Boundary

**River Improvement Works  
by Japanese ODA Loan Projects**

- Stage (I) (IP-405, 1994-1999)
- Stage (II) (IP-497, 1999-2007)
- Proposed Stage (III)  
based on 2007 D/D
- Proposed ODA Loan Project  
by Surver(2010)
- ▨ FloodExtent2006

Data Source :  
UCBFM, ICWRMIP, ADB(2010)



**The Preparatory  
Survey for Citarum  
Upper Basin  
Tributaries Flood  
Management Project**