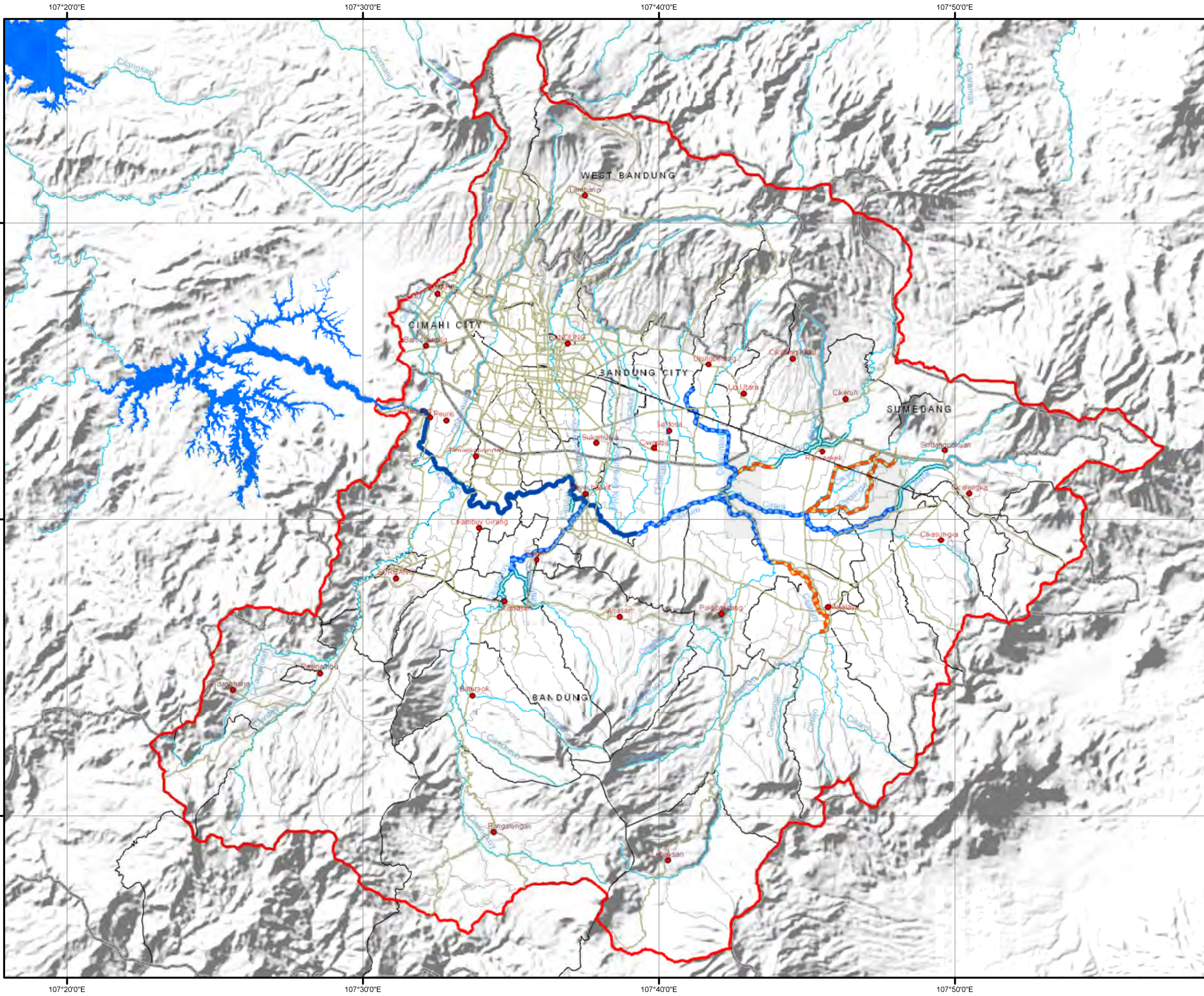
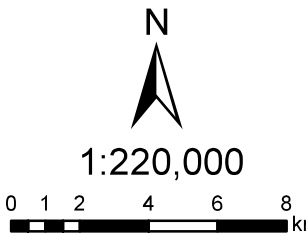


**APPENDIX VIII:**  
**GIS MAPS**



**Administration map**



**Legend**

- City
- Main Road
- +— Rail Way
- River
- Lake/Reservoir
- ▭ Upper Citarum River Basin Boundary
- ▭ Kabupaten/Kota Boundary
- ▭ Kecamatan Boundary
- ▭ Desa Boundary

- River Improvement Works by Japanese ODA Loan Projects**
- Stage (I) (IP-405, 1994-1999)
  - Stage (II) (IP-497, 1999-2007)
  - Proposed Stage (III) based on 2007 D/D
  - Proposed ODA Loan Project by Surver(2010)

Data Source :  
UCBFM, ICWRMIP, ADB(2010)

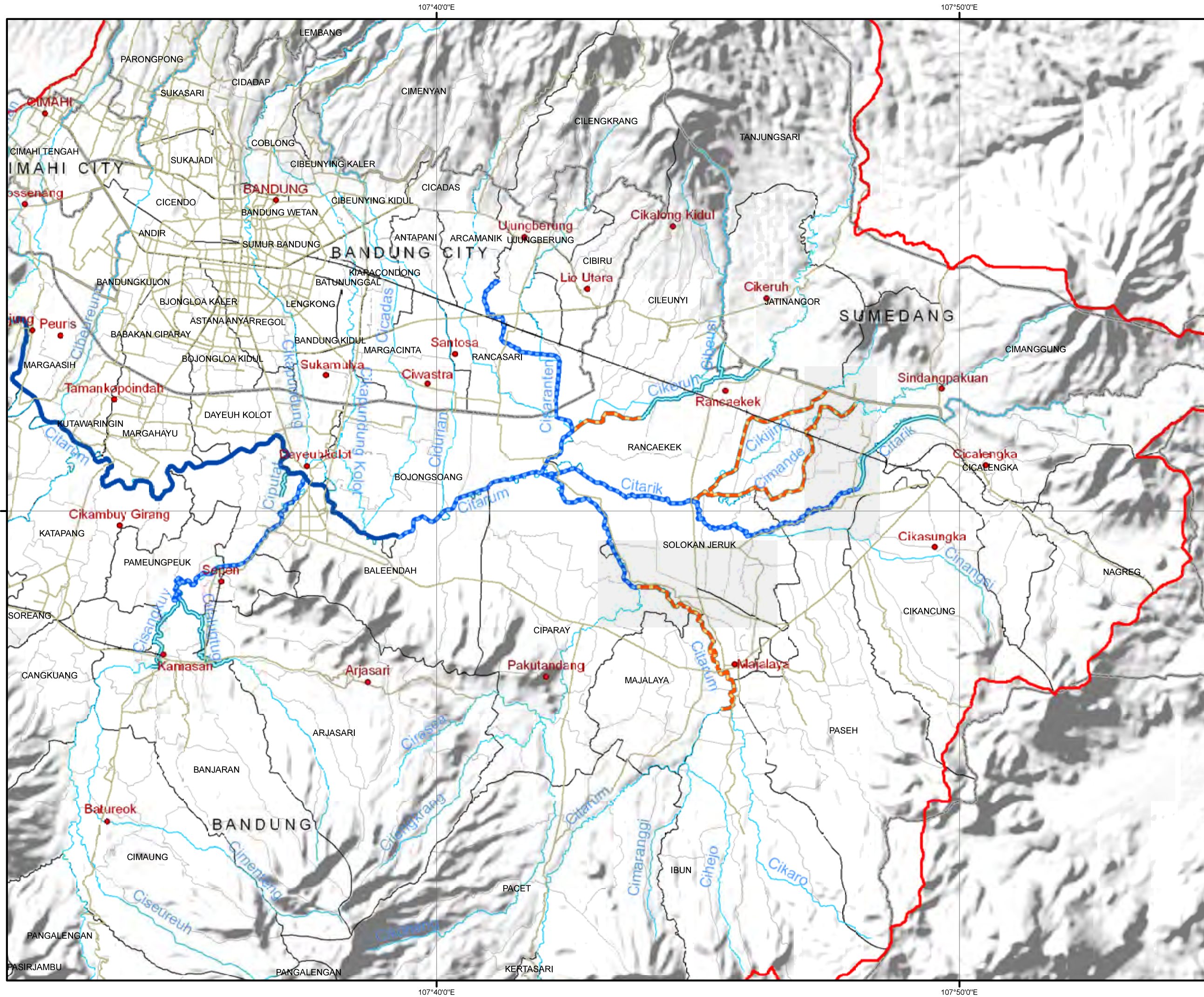


**The Preparatory Survey for Citarum Upper Basin Tributaries Flood Management Project**

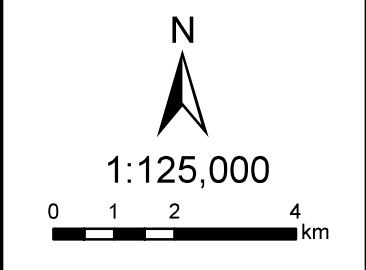
6°50'0"S  
7°0'0"S  
7°10'0"S

6°50'0"S  
7°0'0"S  
7°10'0"S

107°20'0"E 107°30'0"E 107°40'0"E 107°50'0"E



**Administration Map  
(Flood Prone Area)**



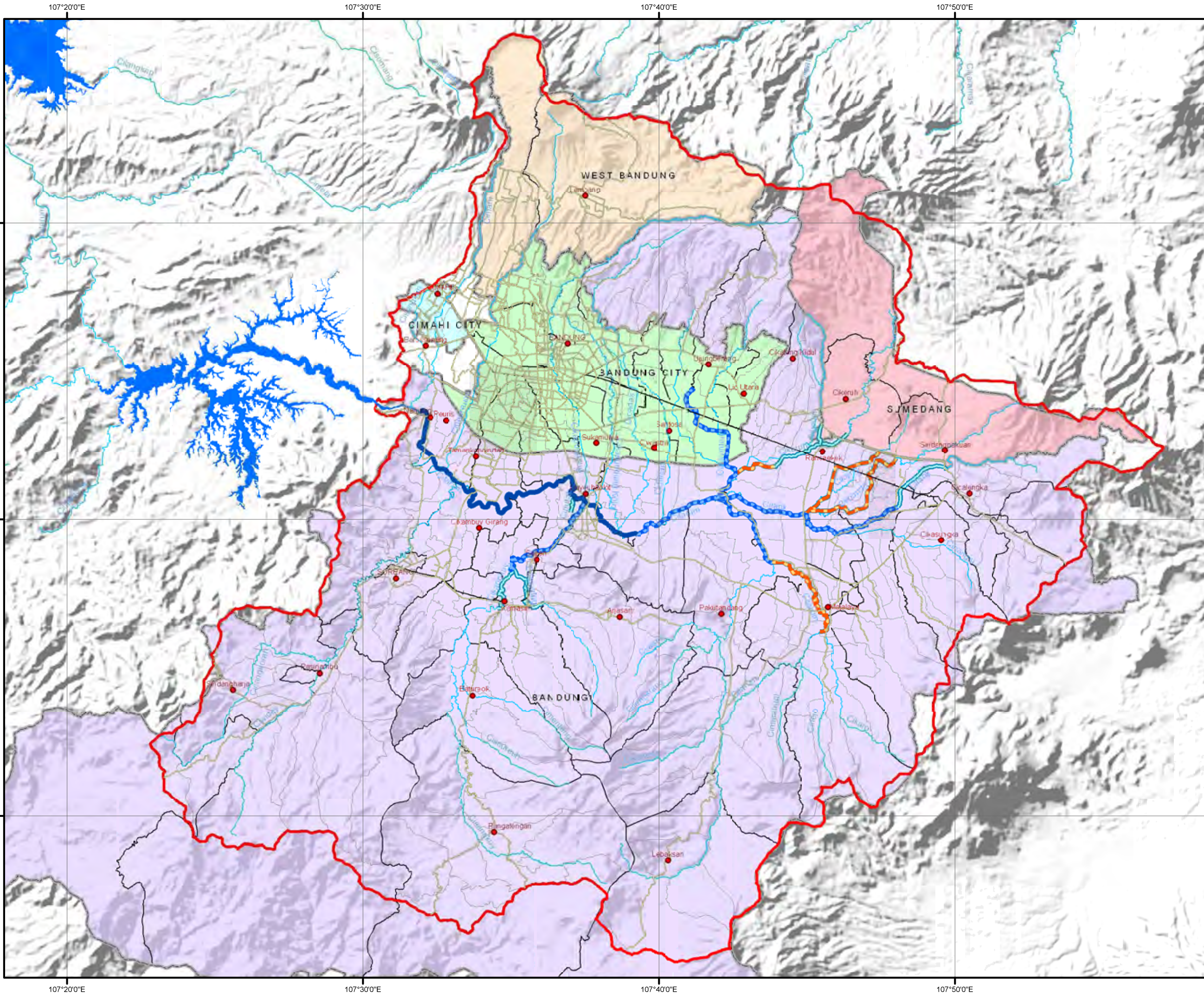
- Legend**
- City
  - Main Road
  - +— Rail Way
  - River
  - Lake/Reservoir
  - - - Upper Citarum River Basin Boundary
  - ▭ Kabupaten/Kota Boundary
  - ▭ Kecamatan Boundary
  - ▭ Desa Boundary

- River Improvement Works  
by Japanese ODA Loan Projects**
- Stage (I) (IP-405, 1994-1999)
  - Stage (II) (IP-497, 1999-2007)
  - Proposed Stage (III)  
based on 2007 D/D
  - Proposed ODA Loan Project  
by Surver(2010)

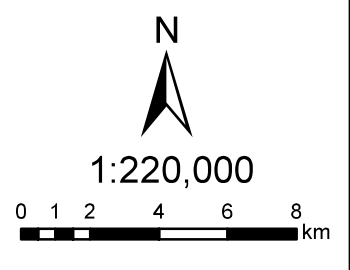
Data Source :  
UCBFM, ICWRMIP, ADB(2010)



**The Preparatory  
Survey for Citarum  
Upper Basin  
Tributaries Flood  
Management Project**



**Administrationmap  
(Kabupaten-Kota)**



- Legend**
- City
  - Main Road
  - +— Rail Way
  - River
  - Lake/Reservoir
  - ▭ Upper Citarum River Basin Boundary
  - ▭ Kabupaten/Kota Boundary
  - ▭ Kecamatan Boundary
  - ▭ Desa Boundary

- River Improvement Works  
by Japanese ODA Loan Projects**
- Stage (I) (IP-405, 1994-1999)
  - Stage (II) (IP-497, 1999-2007)
  - Proposed Stage (III)  
based on 2007 D/D
  - Proposed ODA Loan Project  
by Surver(2010)

Data Source :  
UCBFM, ICWRMIP, ADB(2010)



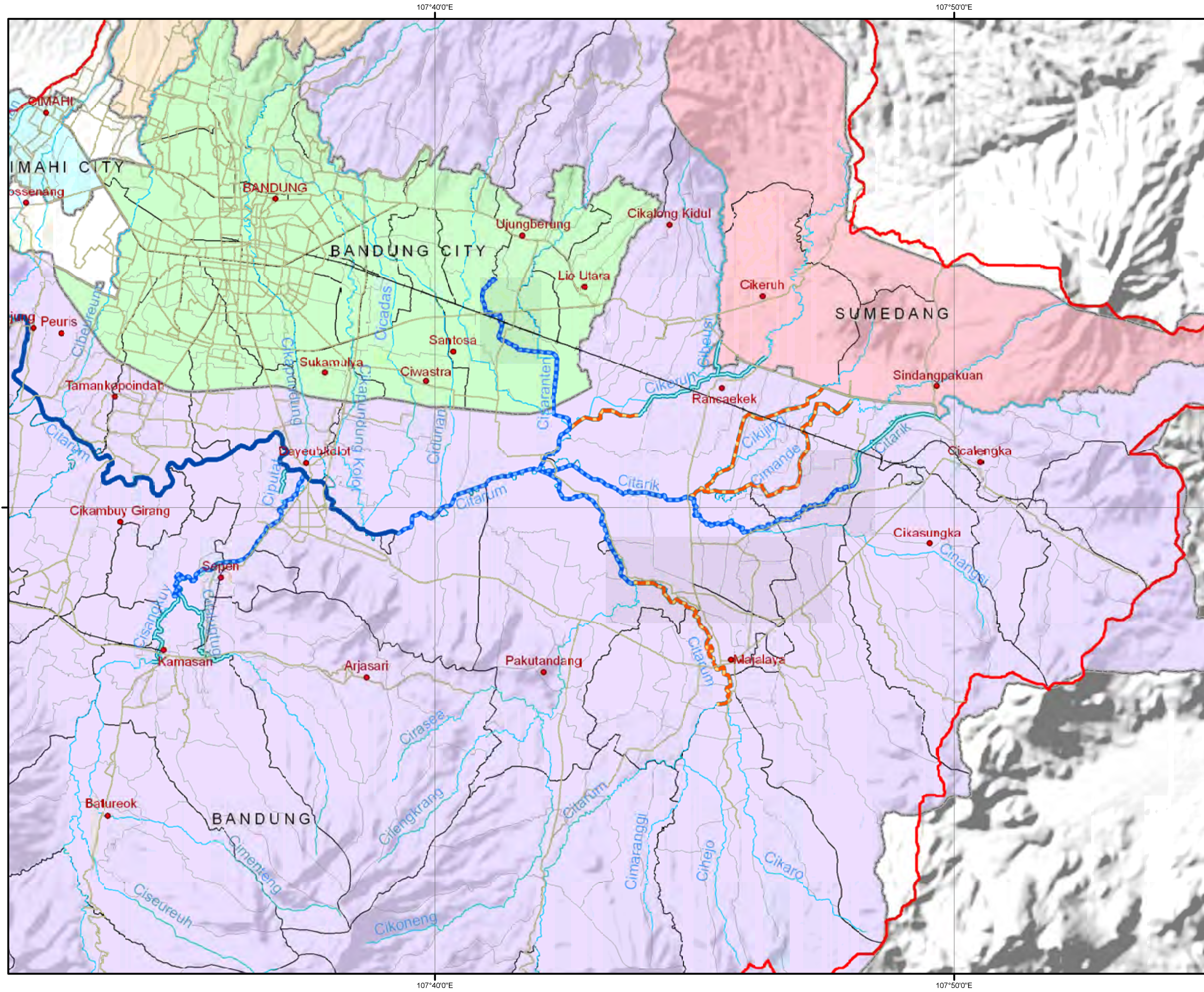
**The Preparatory  
Survey for Citarum  
Upper Basin  
Tributaries Flood  
Management Project**

6°50'0"S  
7°0'0"S  
7°10'0"S

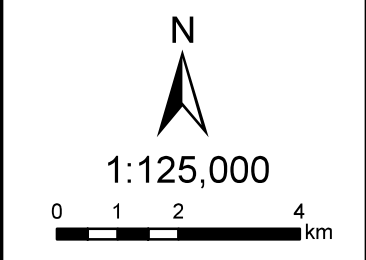
6°50'0"S  
7°0'0"S  
7°10'0"S

107°20'0"E 107°30'0"E 107°40'0"E 107°50'0"E

107°20'0"E 107°30'0"E 107°40'0"E 107°50'0"E



**Administrationmap  
(Kabupaten-Kota)**



**Legend**

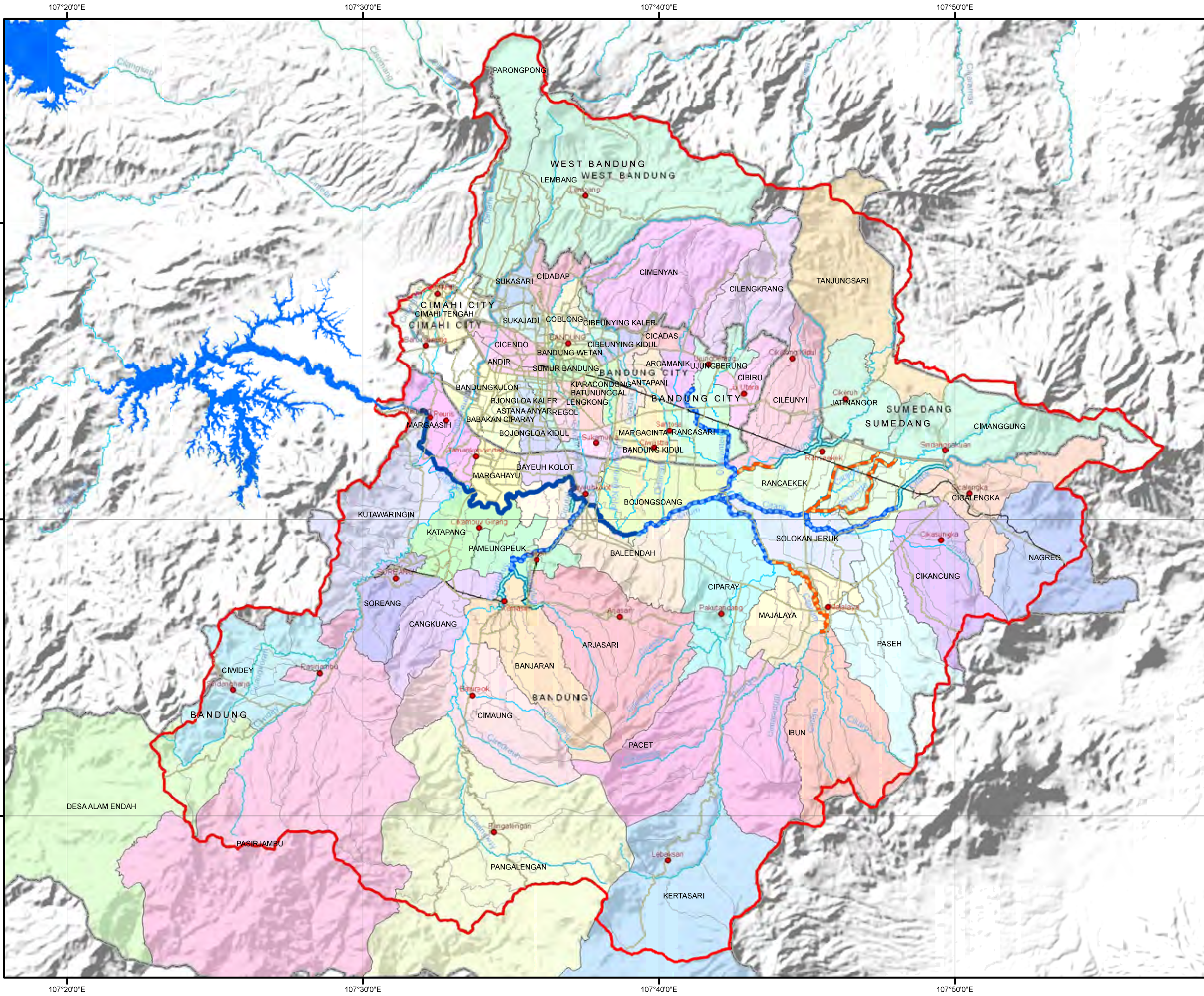
- City
- Main Road
- +— Rail Way
- River
- Lake/Reservoir
- ▭ Upper Citarum River Basin Boundary
- ▭ Kabupaten/Kota Boundary
- ▭ Kecamatan Boundary
- ▭ Desa Boundary

- River Improvement Works  
by Japanese ODA Loan Projects**
- Stage (I) (IP-405, 1994-1999)
  - Stage (II) (IP-497, 1999-2007)
  - Proposed Stage (III)  
based on 2007 D/D
  - Proposed ODA Loan Project  
by Surver(2010)

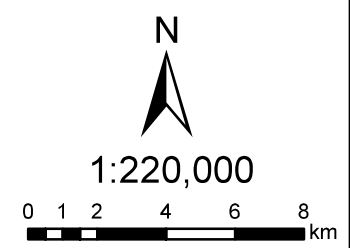
Data Source :  
UCBFM,ICWRMIP,ADB(2010)



**The Preparatory  
Survey for Citarum  
Upper Basin  
Tributaries Flood  
Management Project**



**Administrationmap  
(Kecamatan)**



**Legend**

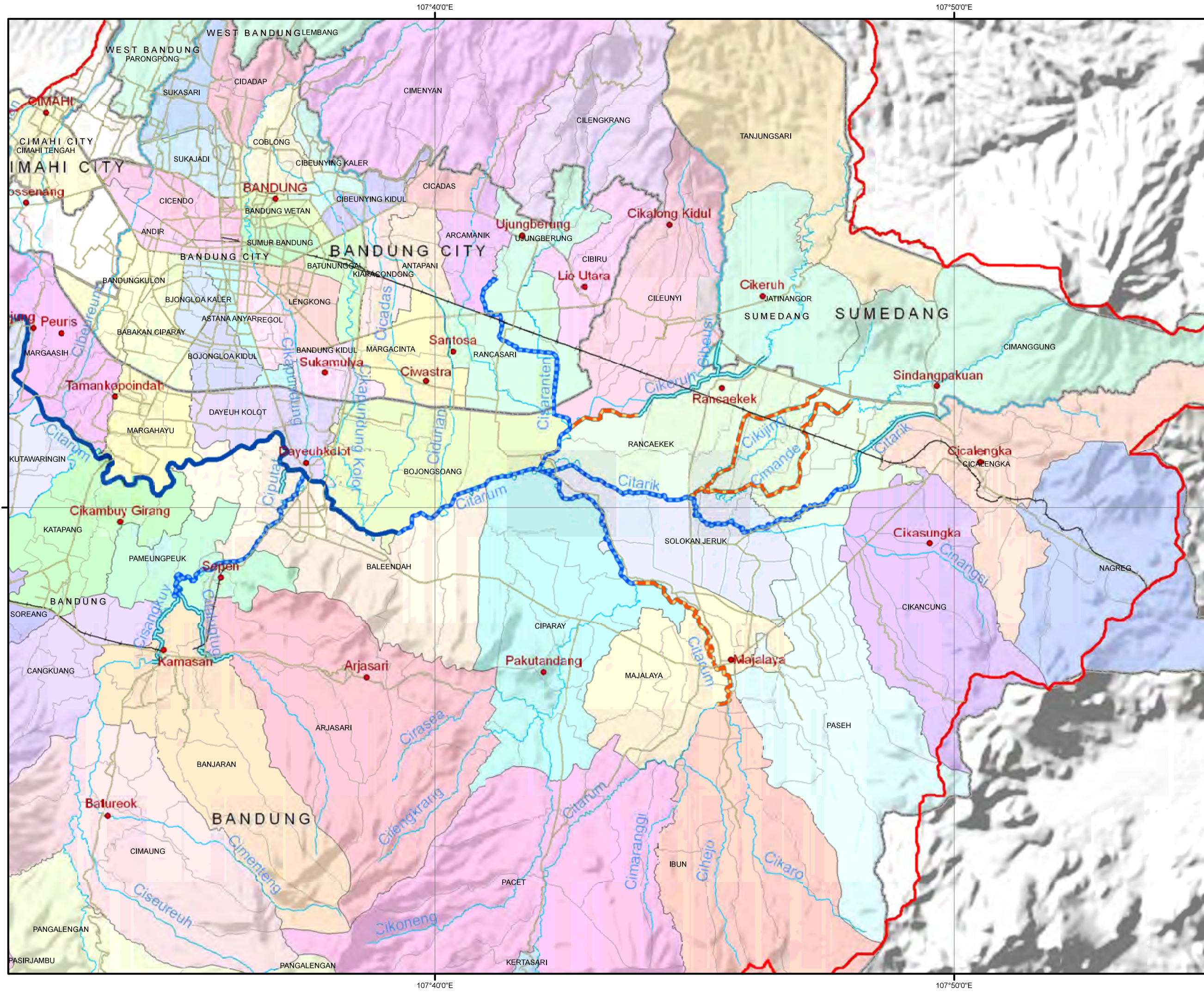
- City
- Main Road
- +— Rail Way
- River
- Lake/Reservoir
- ▭ Upper Citarum River Basin Boundary
- ▭ Kabupaten/Kota Boundary
- ▭ Kecamatan Boundary
- ▭ Desa Boundary

- River Improvement Works  
by Japanese ODA Loan Projects**
- Stage (I) (IP-405, 1994-1999)
  - Stage (II) (IP-497, 1999-2007)
  - Proposed Stage (III)  
based on 2007 D/D
  - Proposed ODA Loan Project  
by Surver(2010)

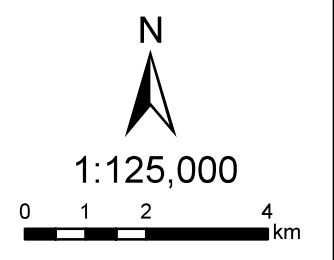
**Data Source :**  
UCBFM, ICWRMIP, ADB(2010)



**The Preparatory  
Survey for Citarum  
Upper Basin  
Tributaries Flood  
Management Project**



**Administrationmap  
(Kecamatan)  
(Flood Prone Area)**



**Legend**

- City
- Main Road
- +— Rail Way
- River
- Lake/Reservoir
- Upper Citarum River Basin Boundary
- Kabupaten/Kota Boundary
- Kecamatan Boundary
- Desa Boundary

- River Improvement Works  
by Japanese ODA Loan Projects**
- Stage (I) (IP-405, 1994-1999)
  - Stage (II) (IP-497, 1999-2007)
  - Proposed Stage (III)  
based on 2007 D/D
  - Proposed ODA Loan Project  
by Surver(2010)

Data Source :  
UCBFM, ICWRMIP, ADB(2010)



**The Preparatory  
Survey for Citarum  
Upper Basin  
Tributaries Flood  
Management Project**