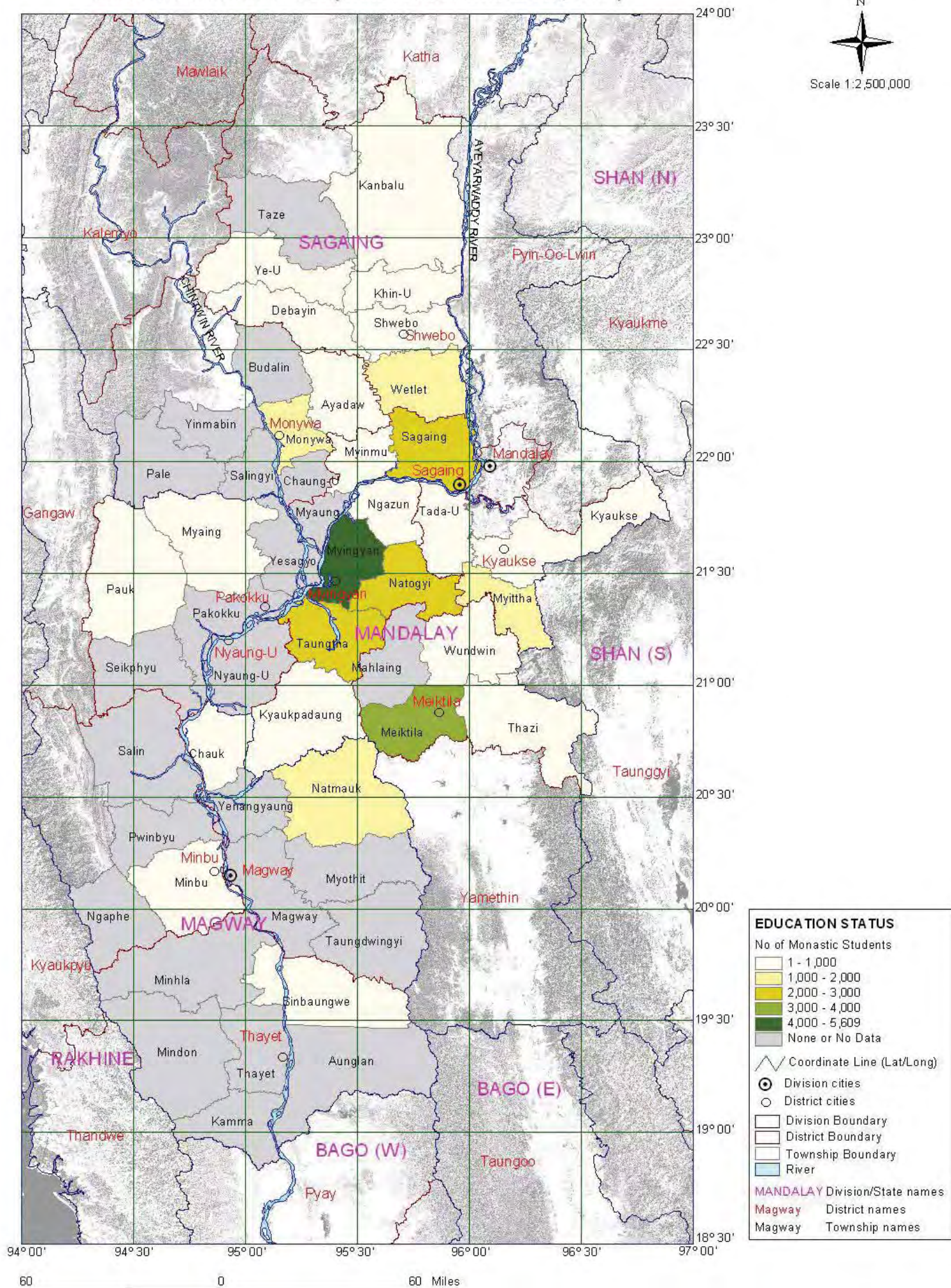
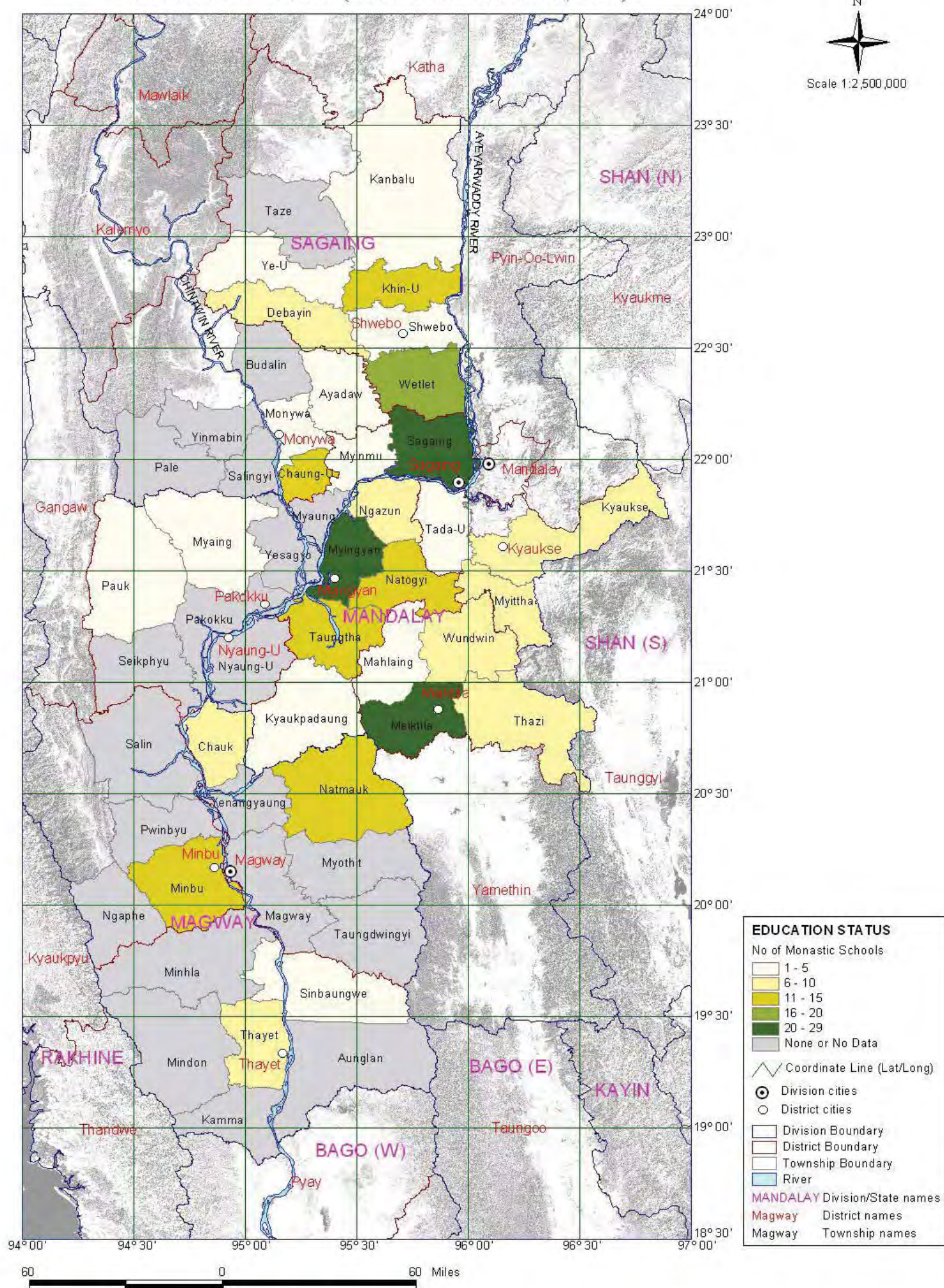


EDUCATION STATUS No. of Monastic Students (Non Formal Education, 2005)



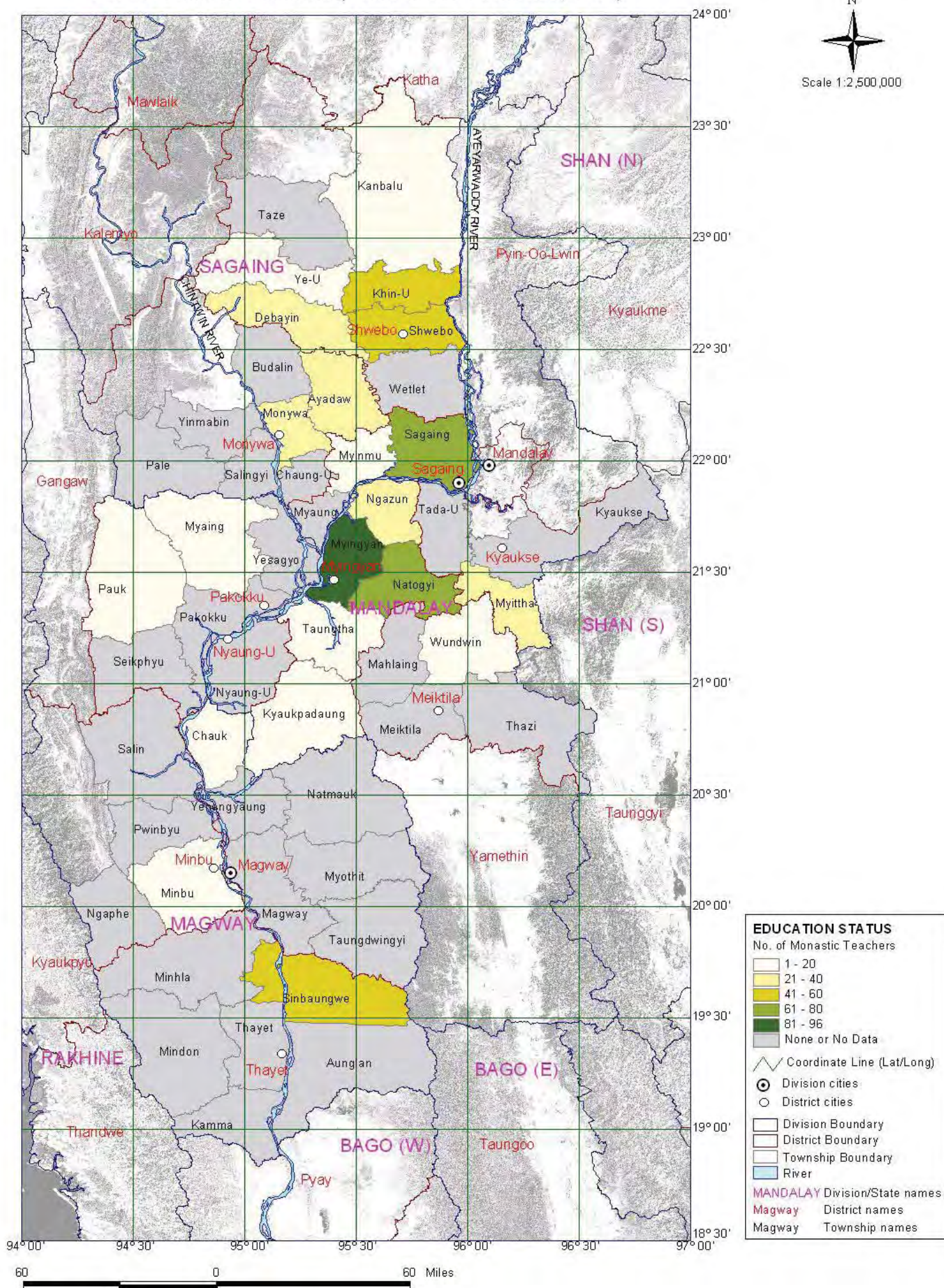
EDUCATION STATUS

No. of Monastic Schools (Non Formal Education, 2005)

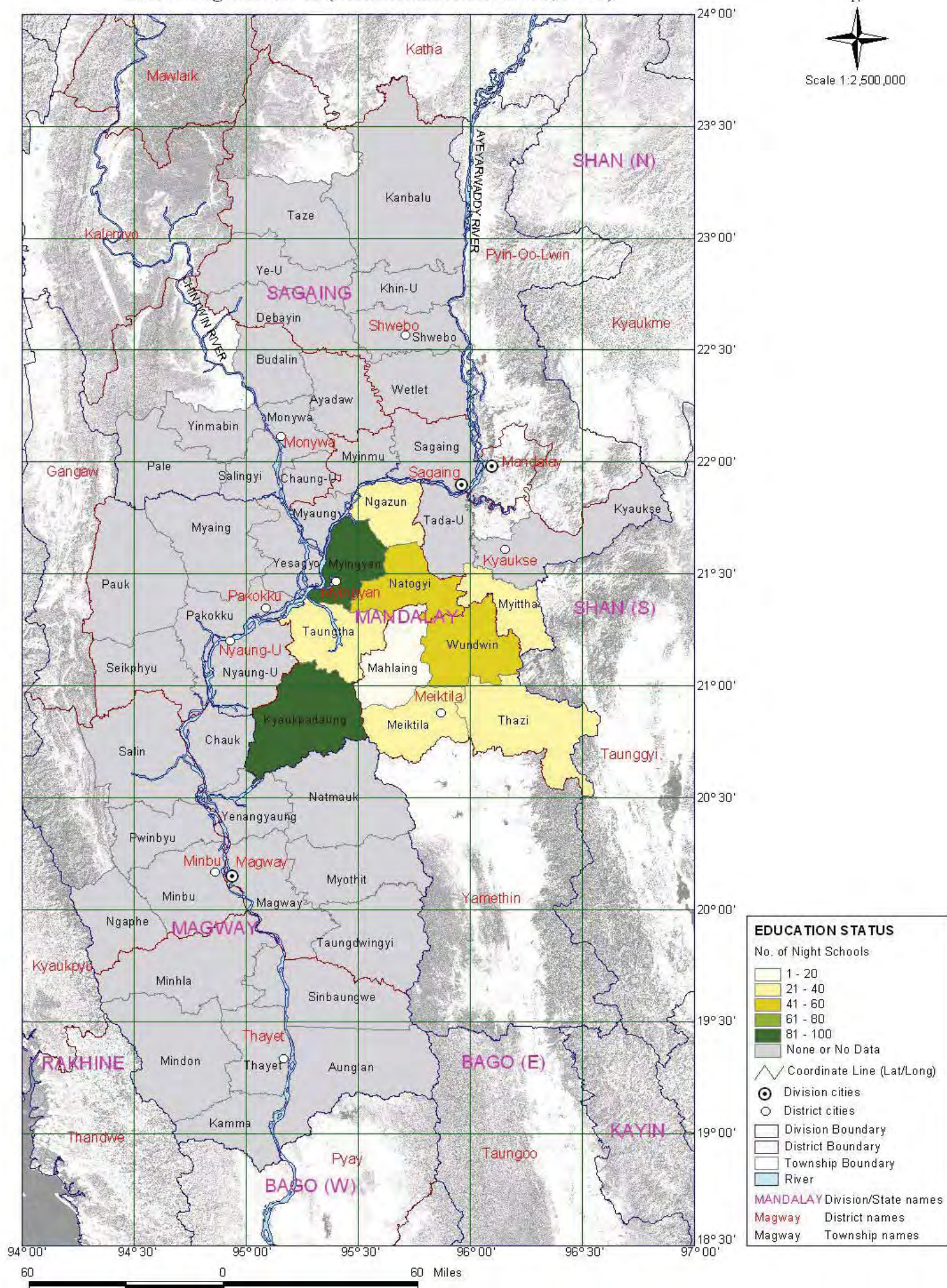


Source: Township Profile, Township Peace and Development Council

EDUCATION STATUS No. of Monastic Teachers (Non Formal Education, 2005)

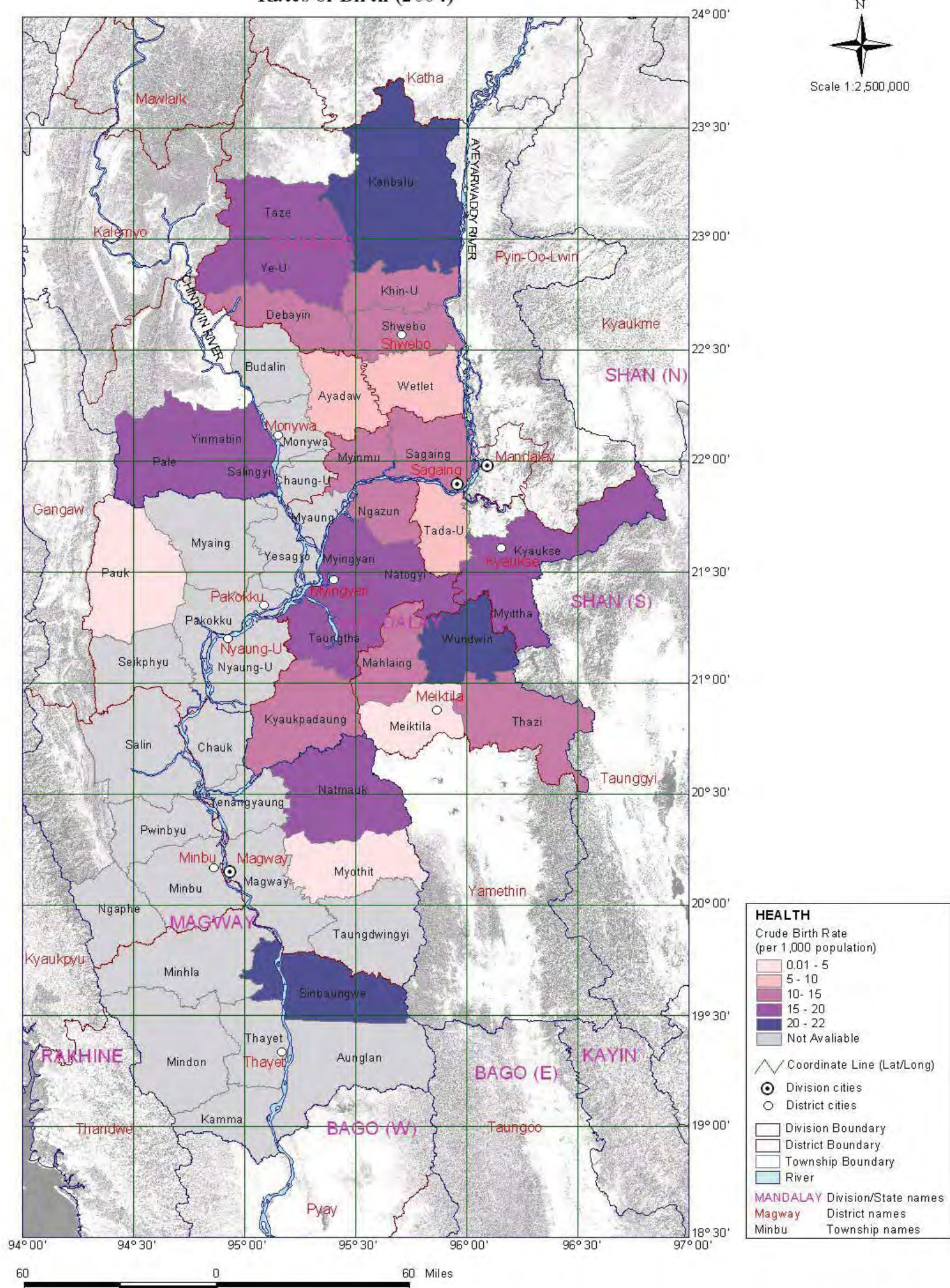


EDUCATION STATUS No. of Night Schools (Non Formal Education, 2005)



HEALTH

Rates of Birth (2004)

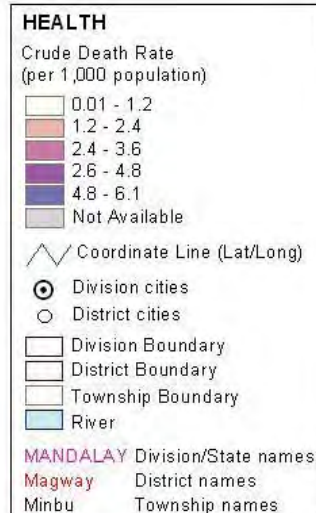
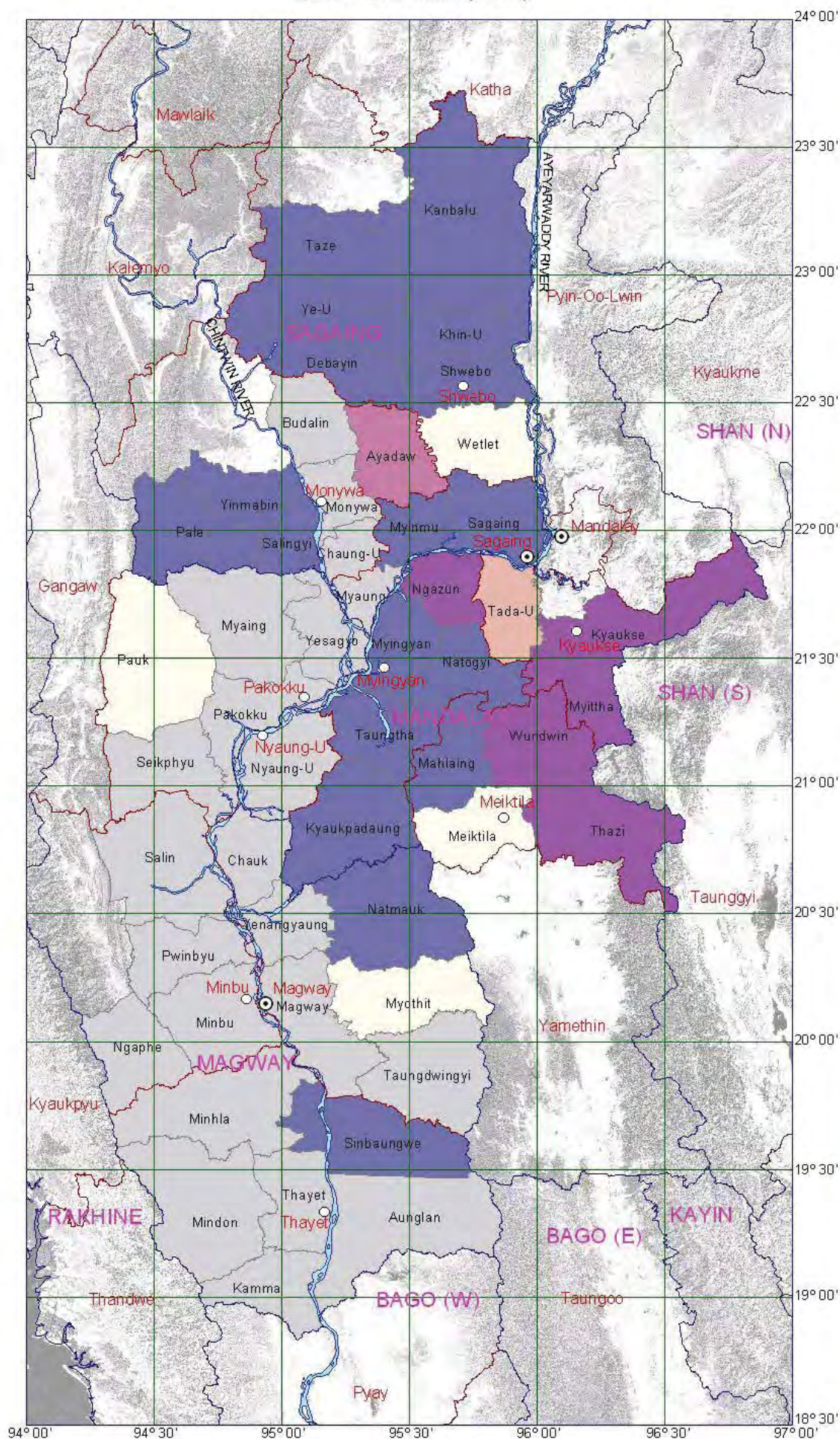


HEALTH Rates of Death (2004)

MAP 9.2



Scale 1:2,500,000

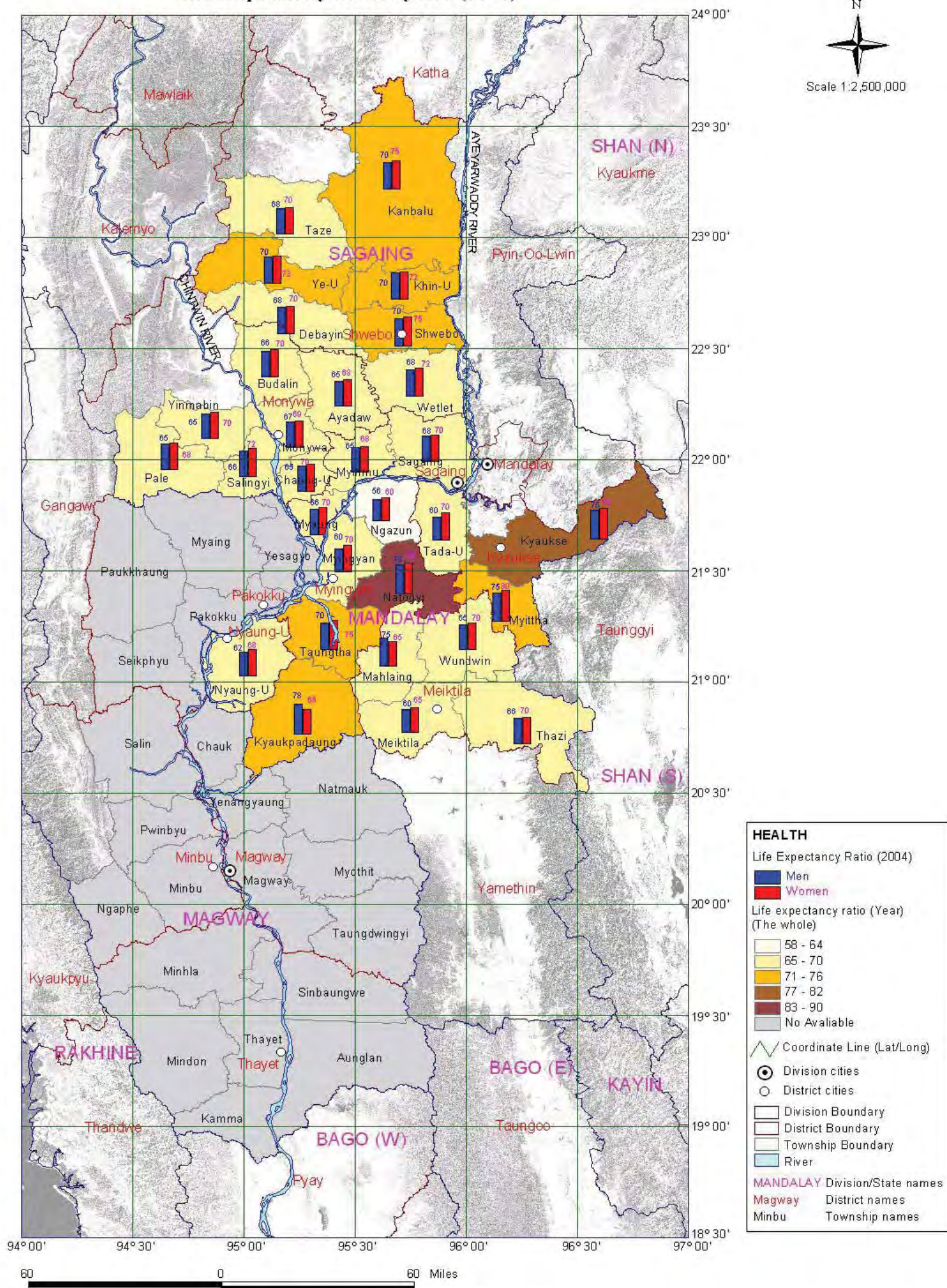


60 0 60 Miles

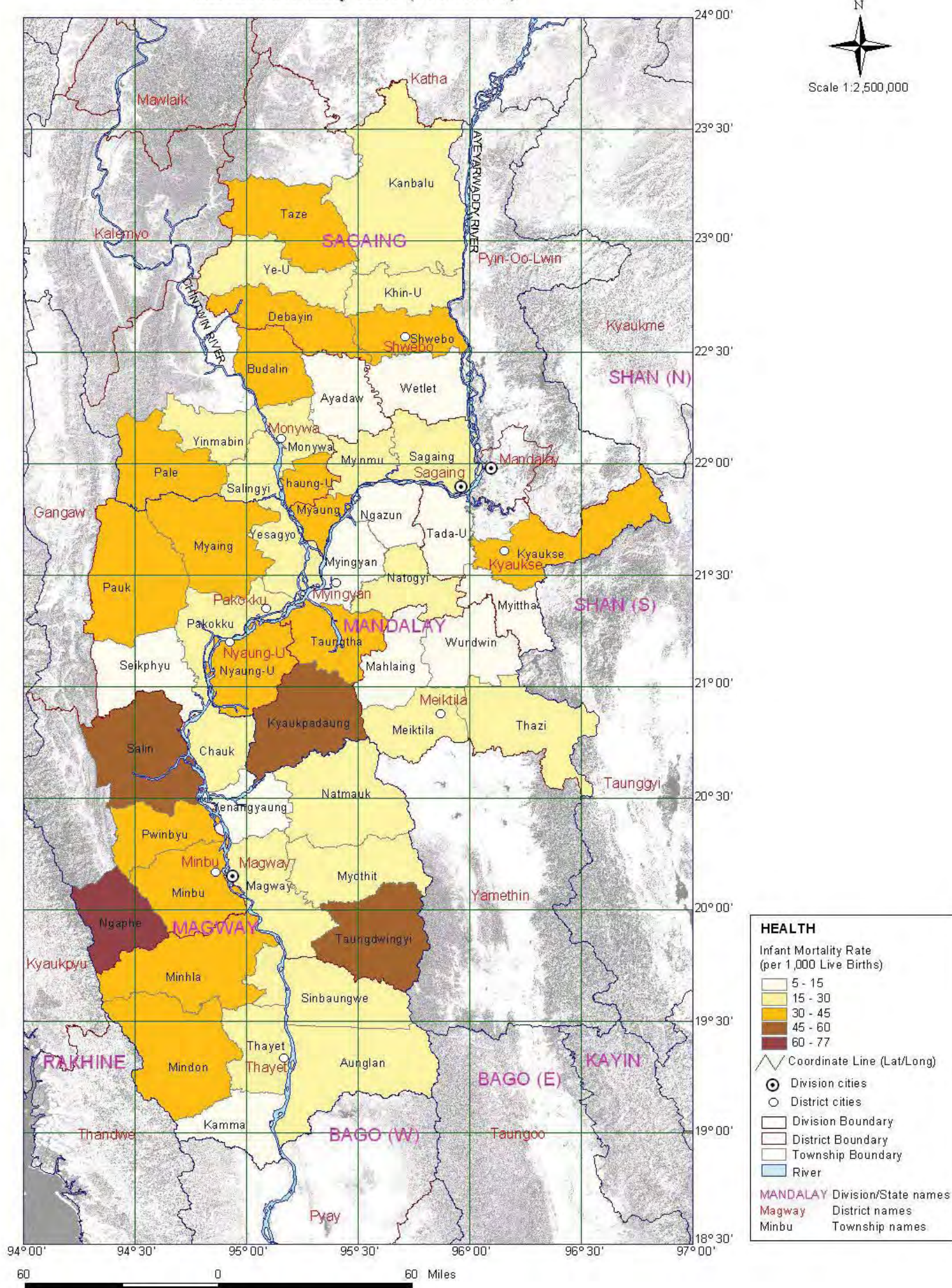
Source: Township Profile, Township Peace and Development Council

HEALTH

Life Expectancy Ratio by Sex (2004)

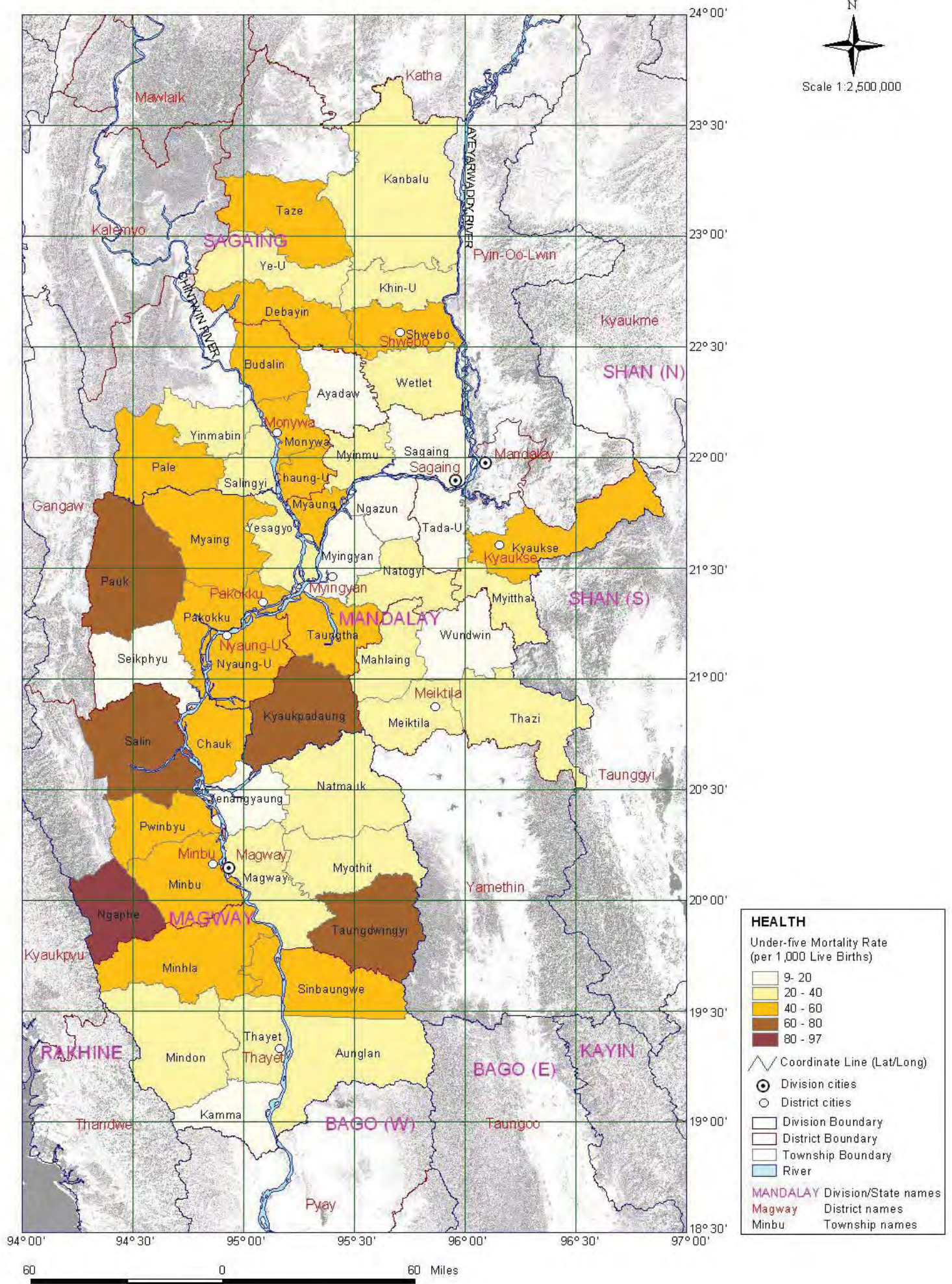


HEALTH Infant Mortality Rate (2004-2005)



HEALTH Under-five Mortality Rate (2004-2005)

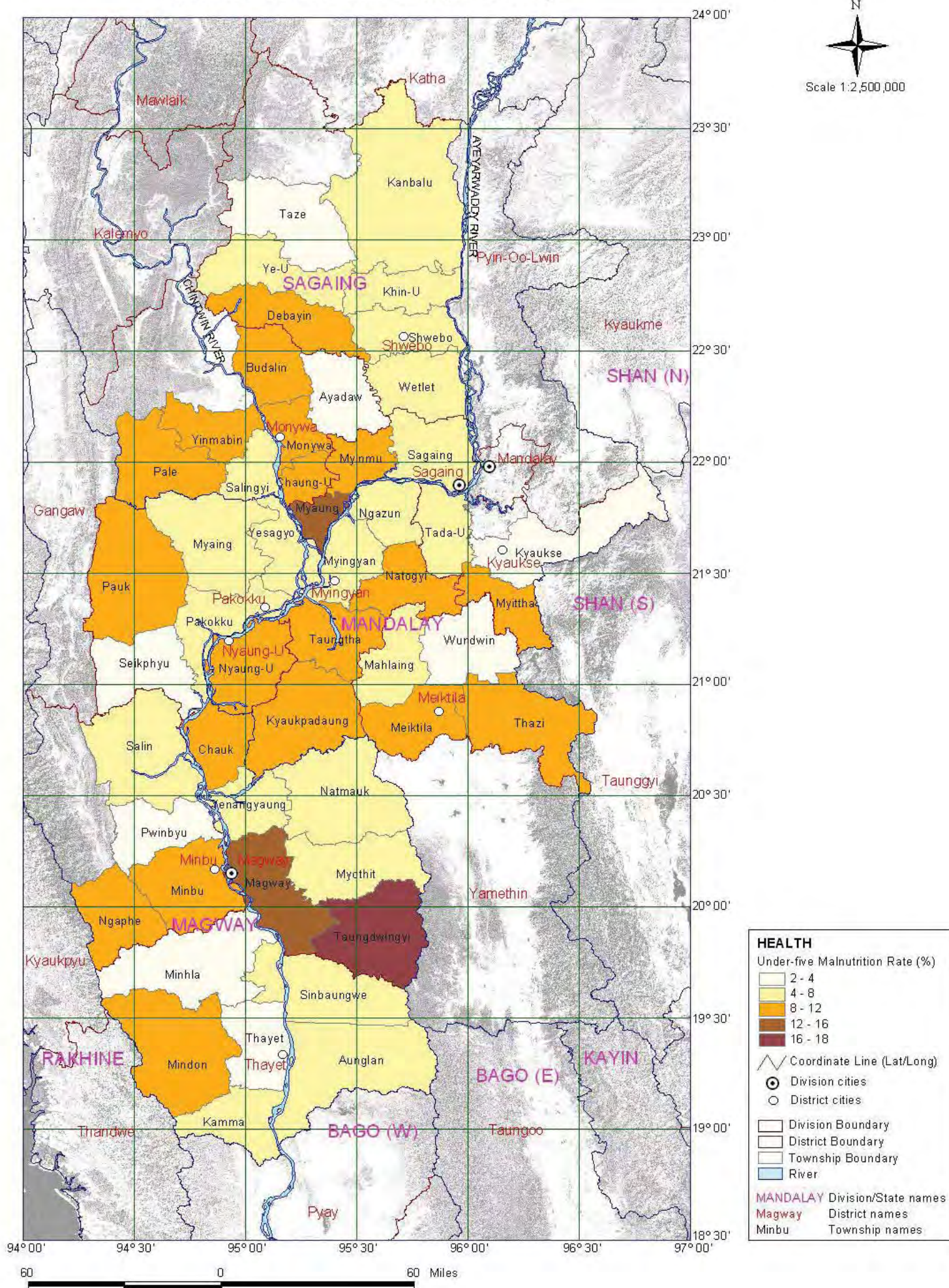
MAP 9.5



HEALTH

Under-five Malnutrition Rate (2004-2005)

MAP 9.6



Source: Health Management Information System (HMIS)

HEALTH Maternal Mortality Rate (2004-2005)

MAP 9.7

