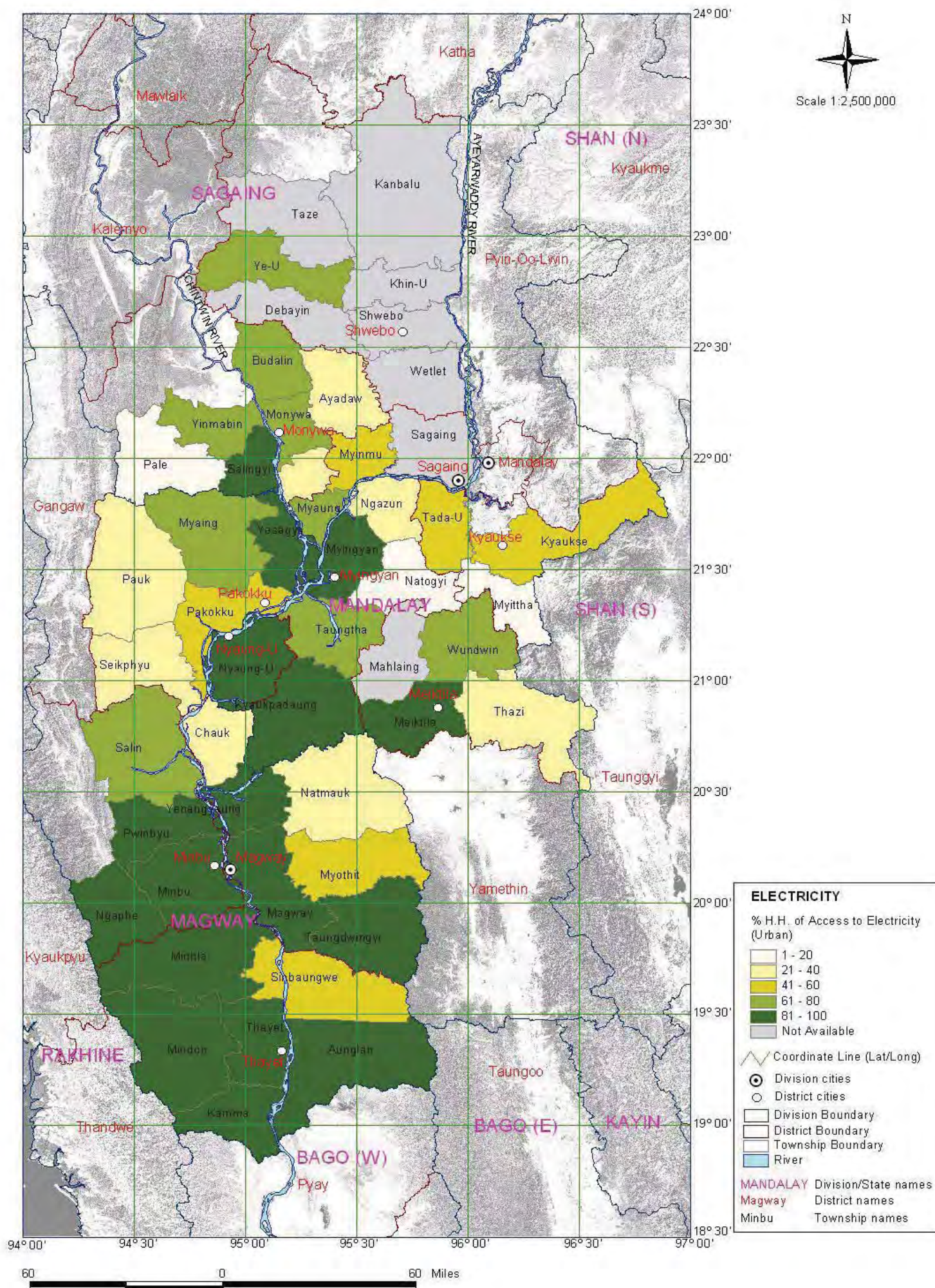
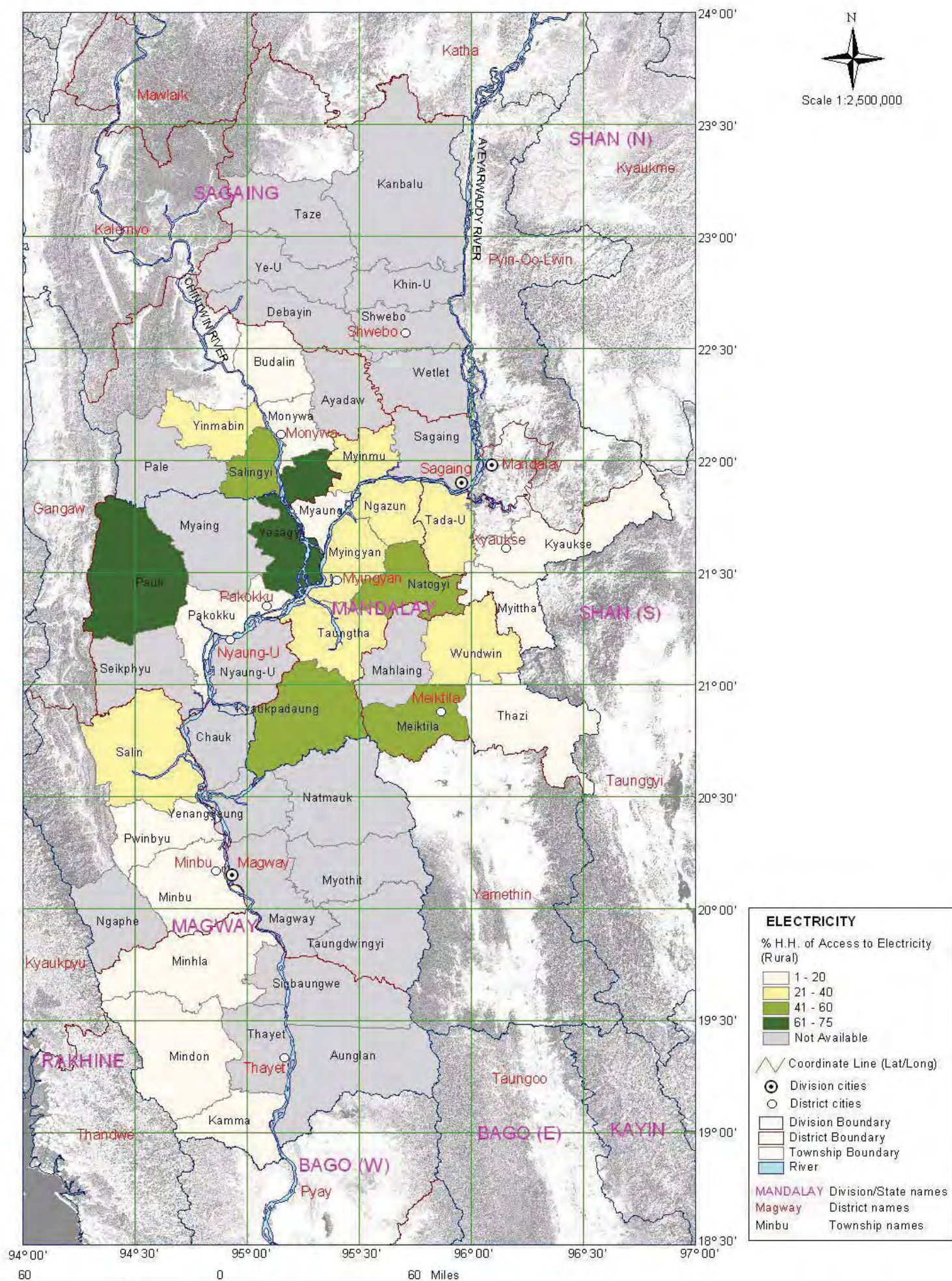


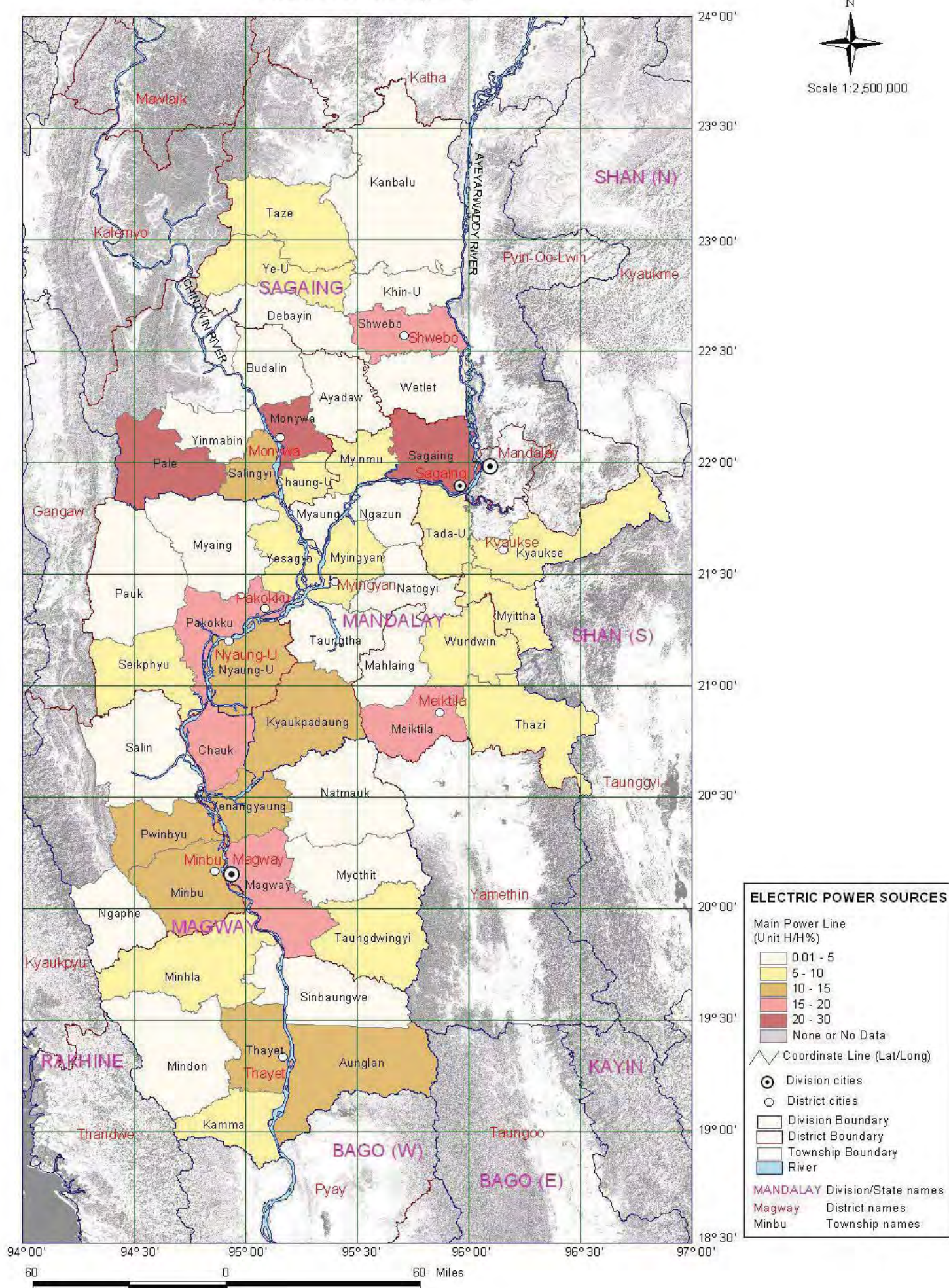
Access to Electrification for Urban (2005)



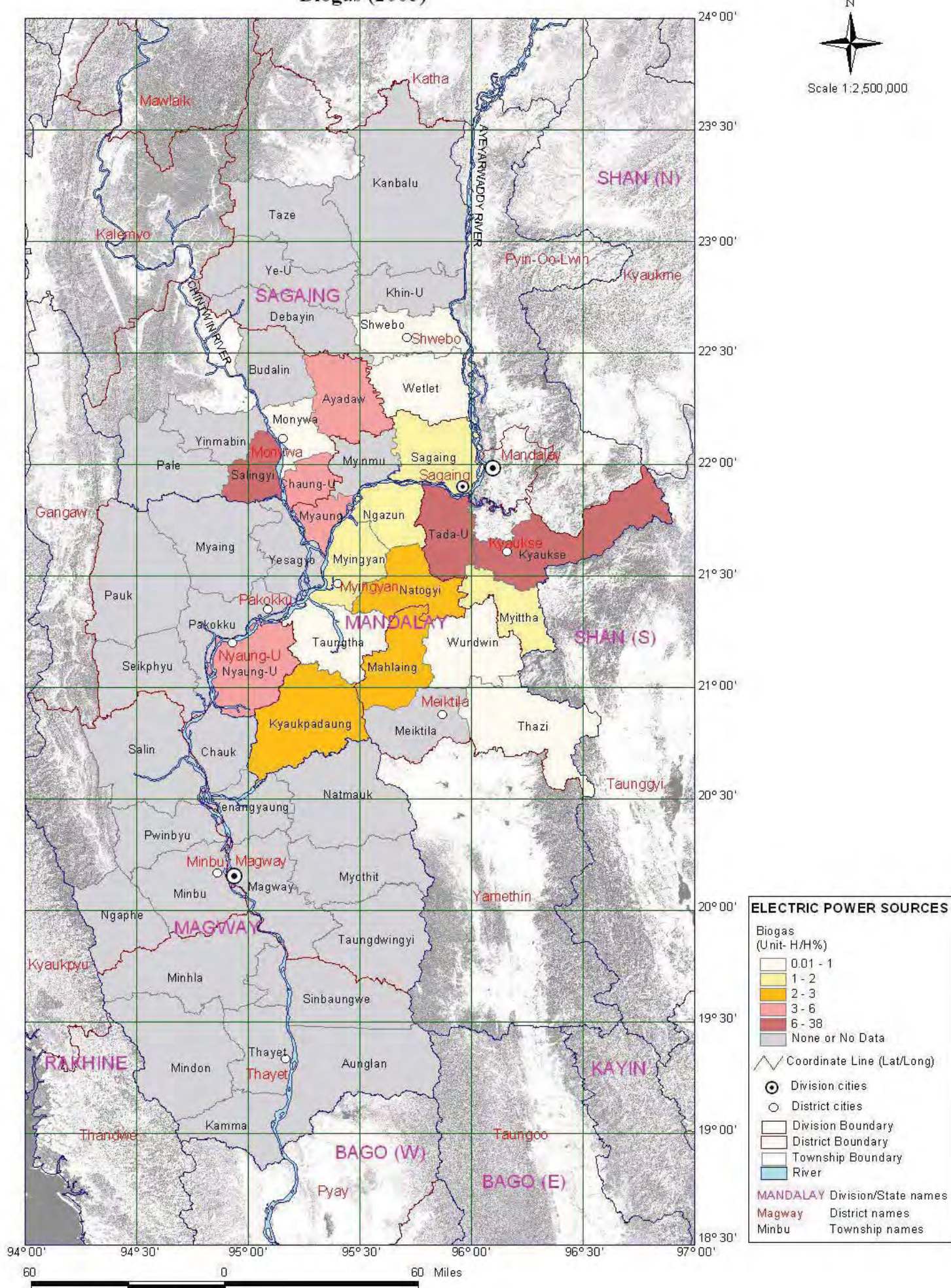
Access to Electrification for Rural (2005)



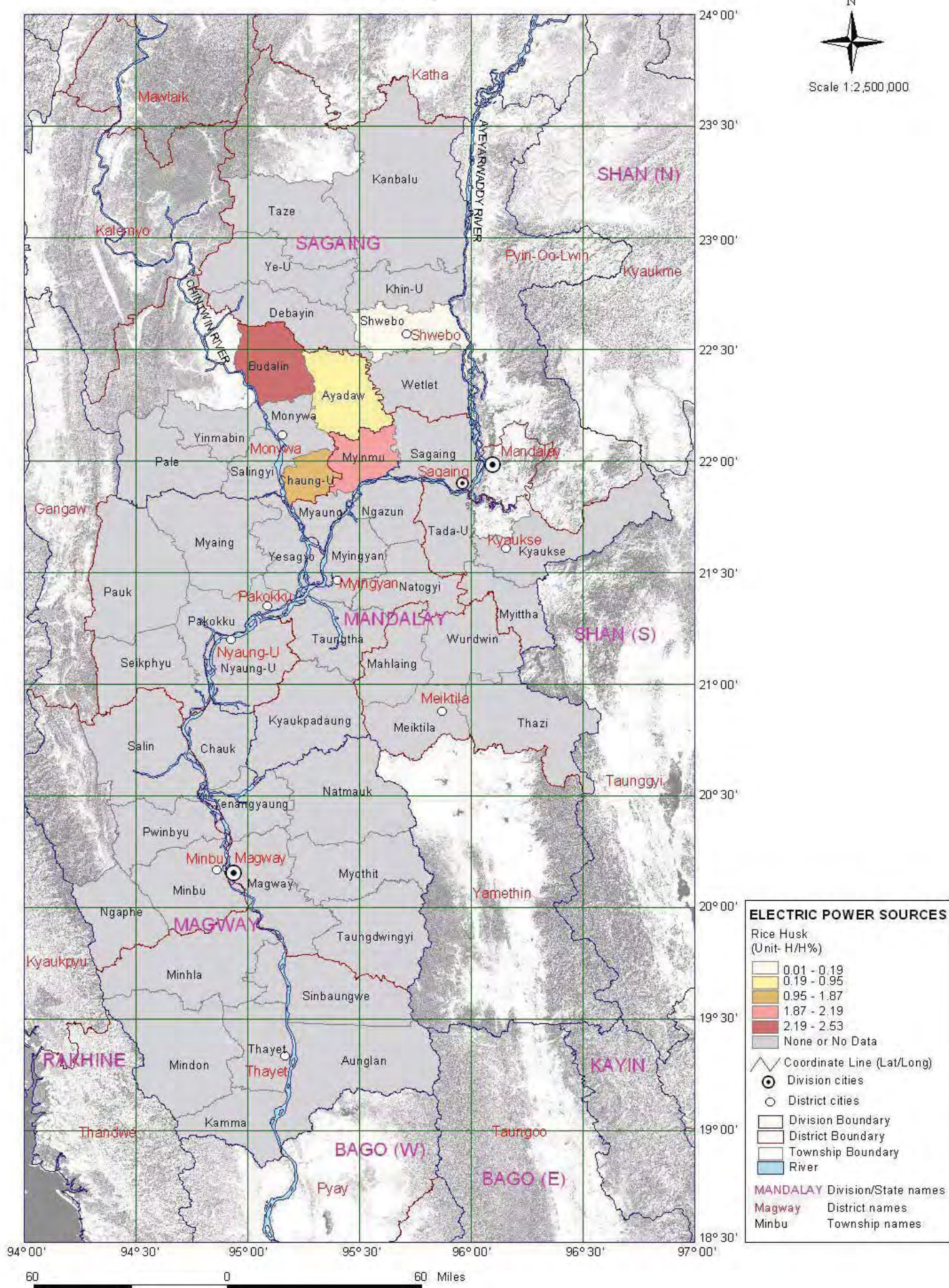
Rate of Households by Electric Power Sources Main Power Line (2005)



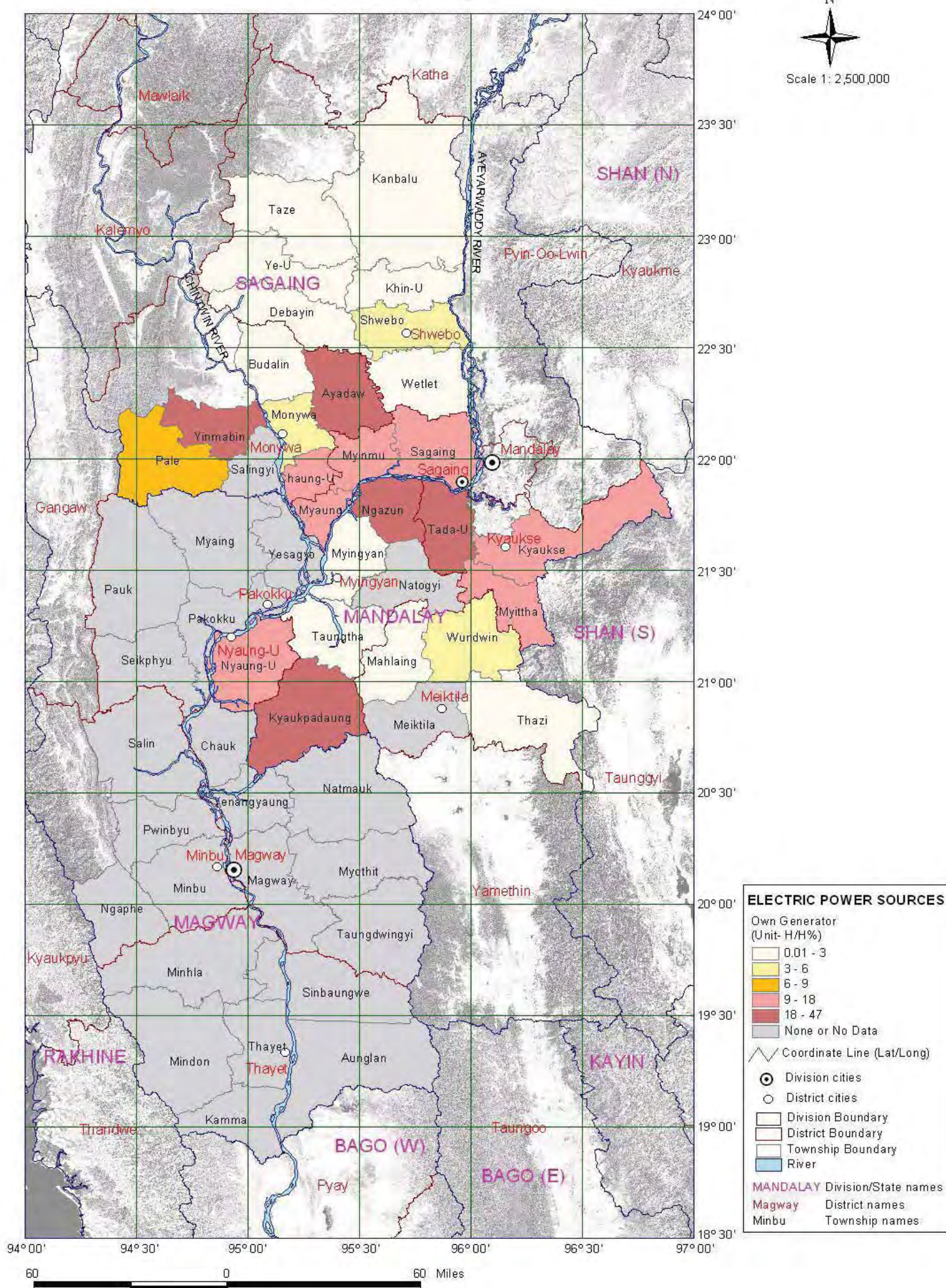
Rate of Households by Electric Power Sources Biogas (2005)



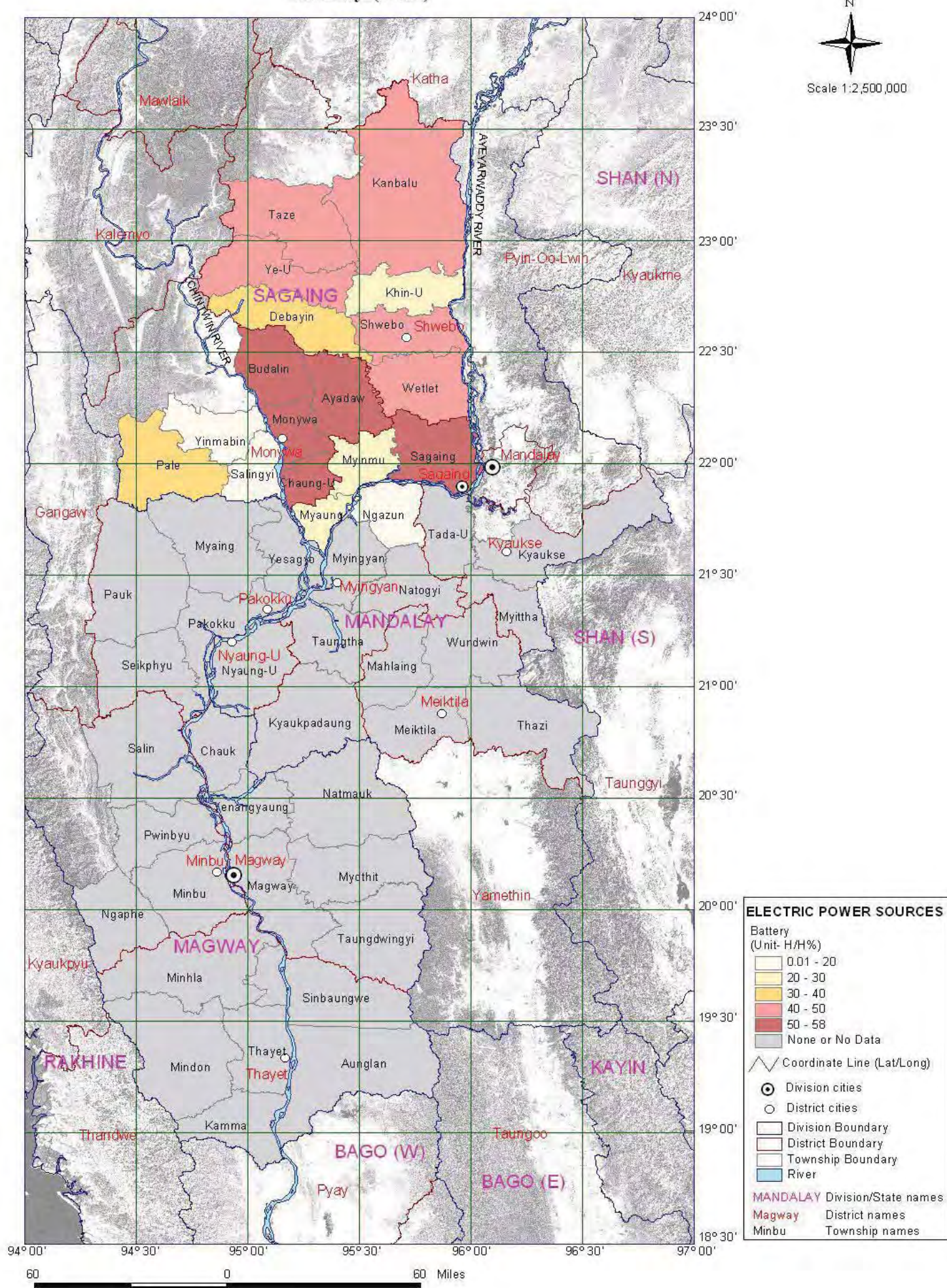
Rate of Households by Electric Power Sources Rice Husk (2005)



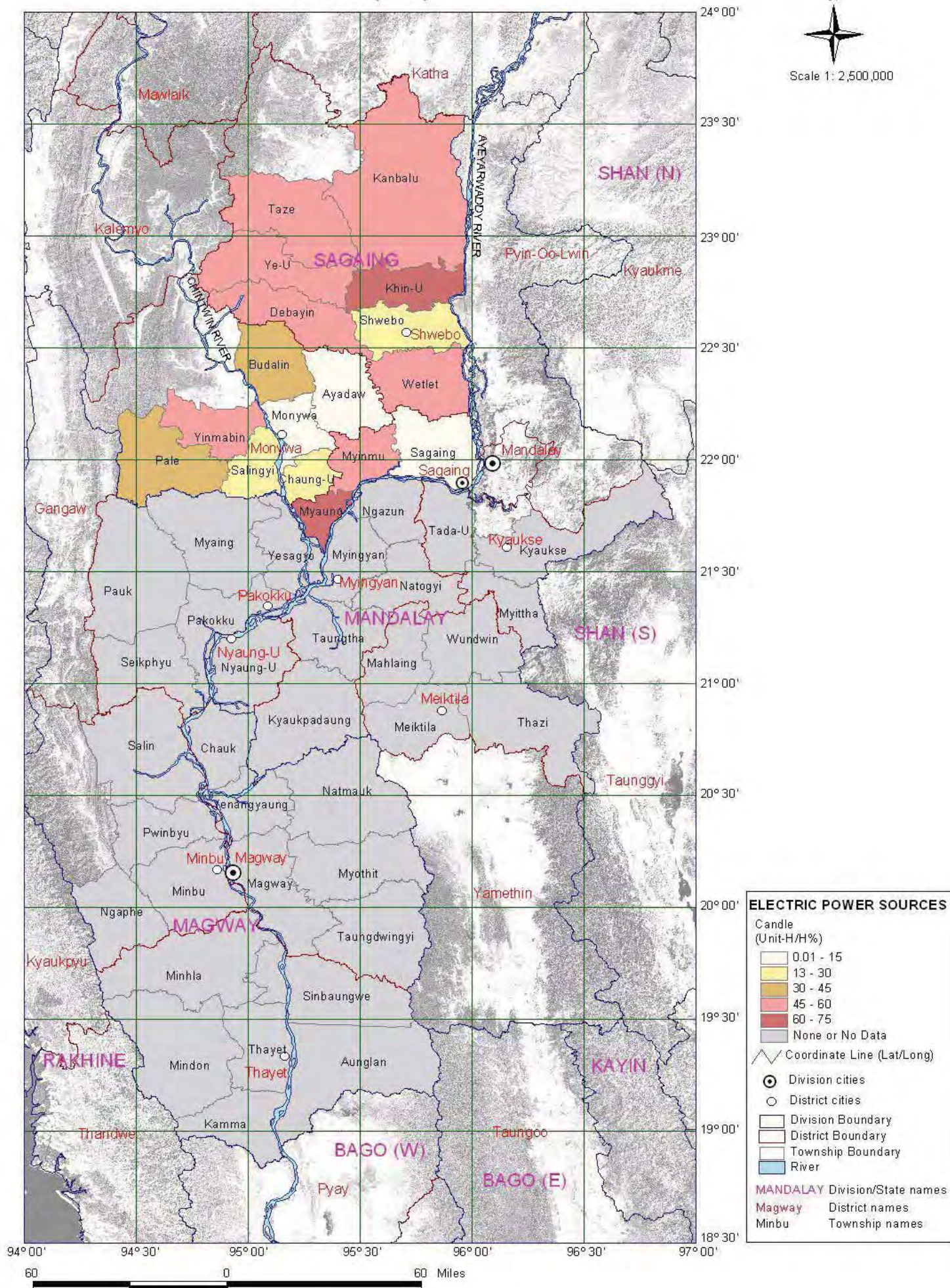
Rate of Households by Electric Power Sources Own Generator (2005)



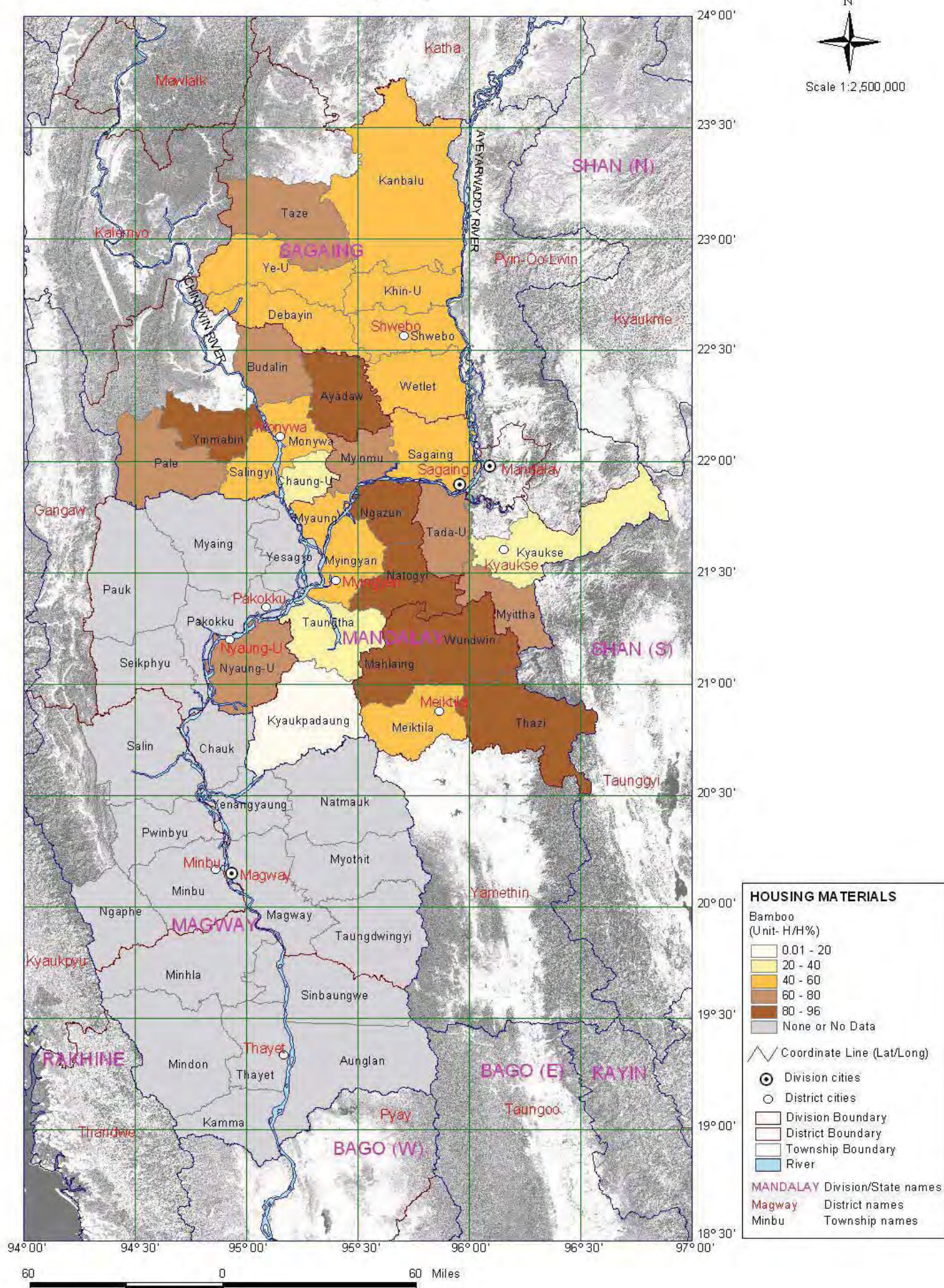
Rate of Households by Electric Power Sources Battery (2005)



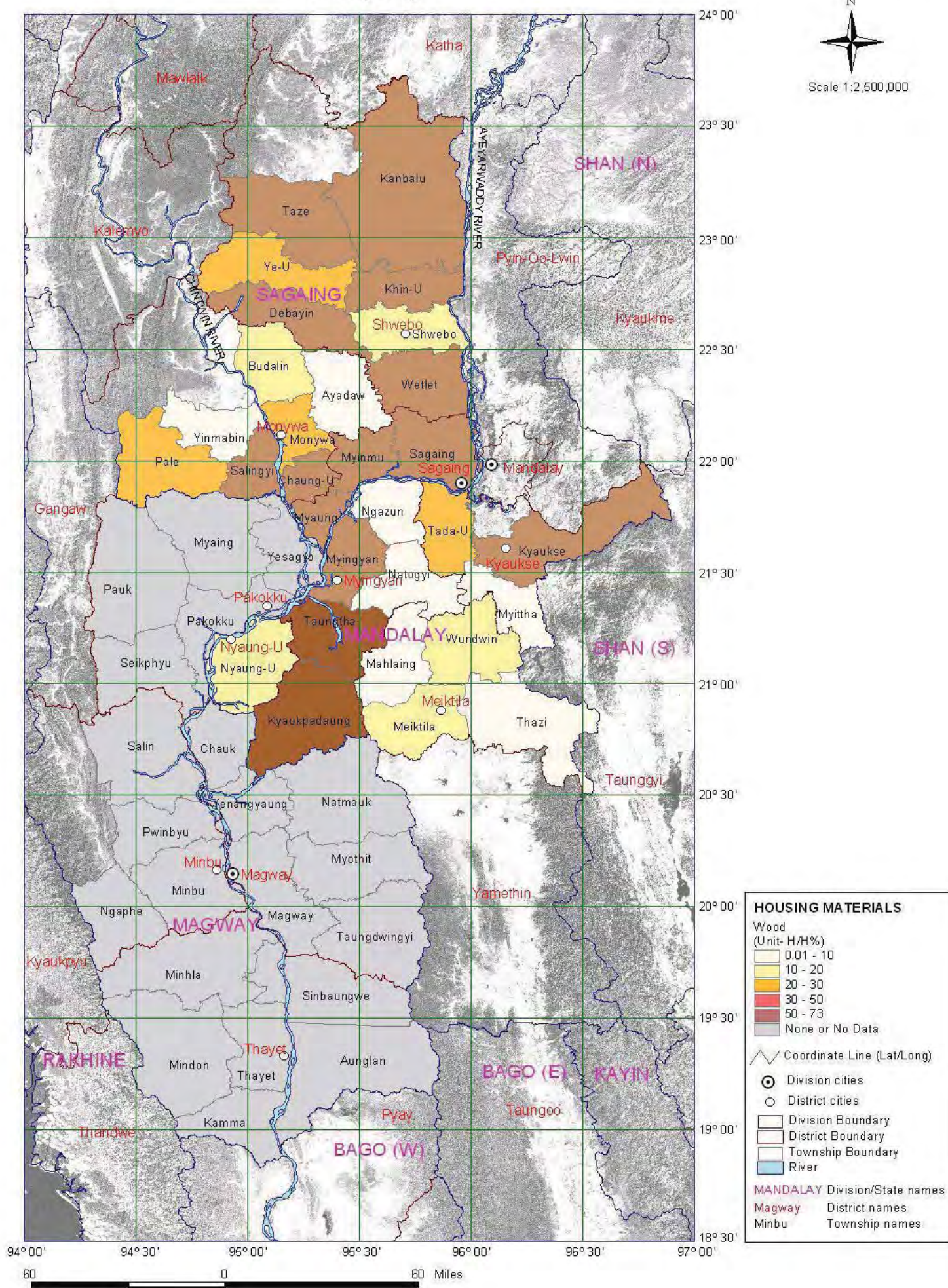
Rate of Households by Electric Power Sources Candle (2005)



Rate of Households by Type of Housing Materials Bamboo (2005)



Rate of Households by Type of Housing Materials Wood (2005)



Rate of Households by Type of Housing Materials Brick (2005)

