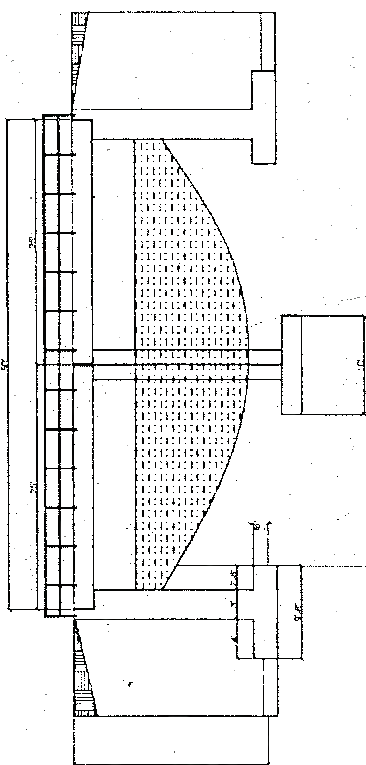
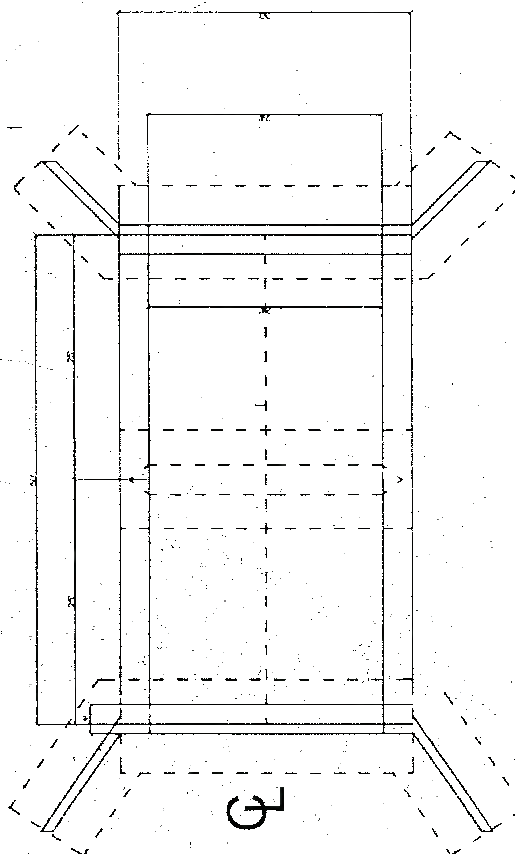


**TECHNICAL SPECIFICATION (AASHTO)**

- CONCRETE STRESS @ 98 DAYS 3000 PSI
- STEEL YIELD STRESS 48000 PSI
- CONCRETE COVER 2 INCHES
- MINIMUM STEEL LAP 30 INCHES
- SOIL PRESSURE (WIM) 1000 PSI
- MIX RATIO 1:1 1/2:2
- COARSE AGGREGATE X-1
- BLINDING COARSE MIX RATIO 1:3:4



**TYPICAL ELEVATION**

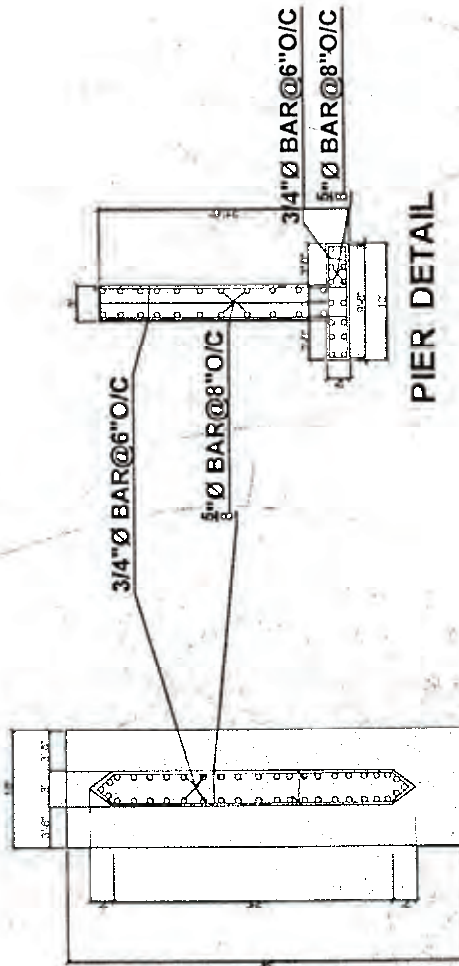


**TYPICAL 2-LANE PLAN**

MINISTRY OF PUBLIC WORKS	
PROJECT	TYPICAL BRIDGE
LOCATION	PRIMARY & Bypass ROAD
DESIGNED BY	I. SASAY, CHIEF ENGINEER
APPROVED BY	[Signature]

**TECHNICAL SPECIFICATION (AASHTO)**

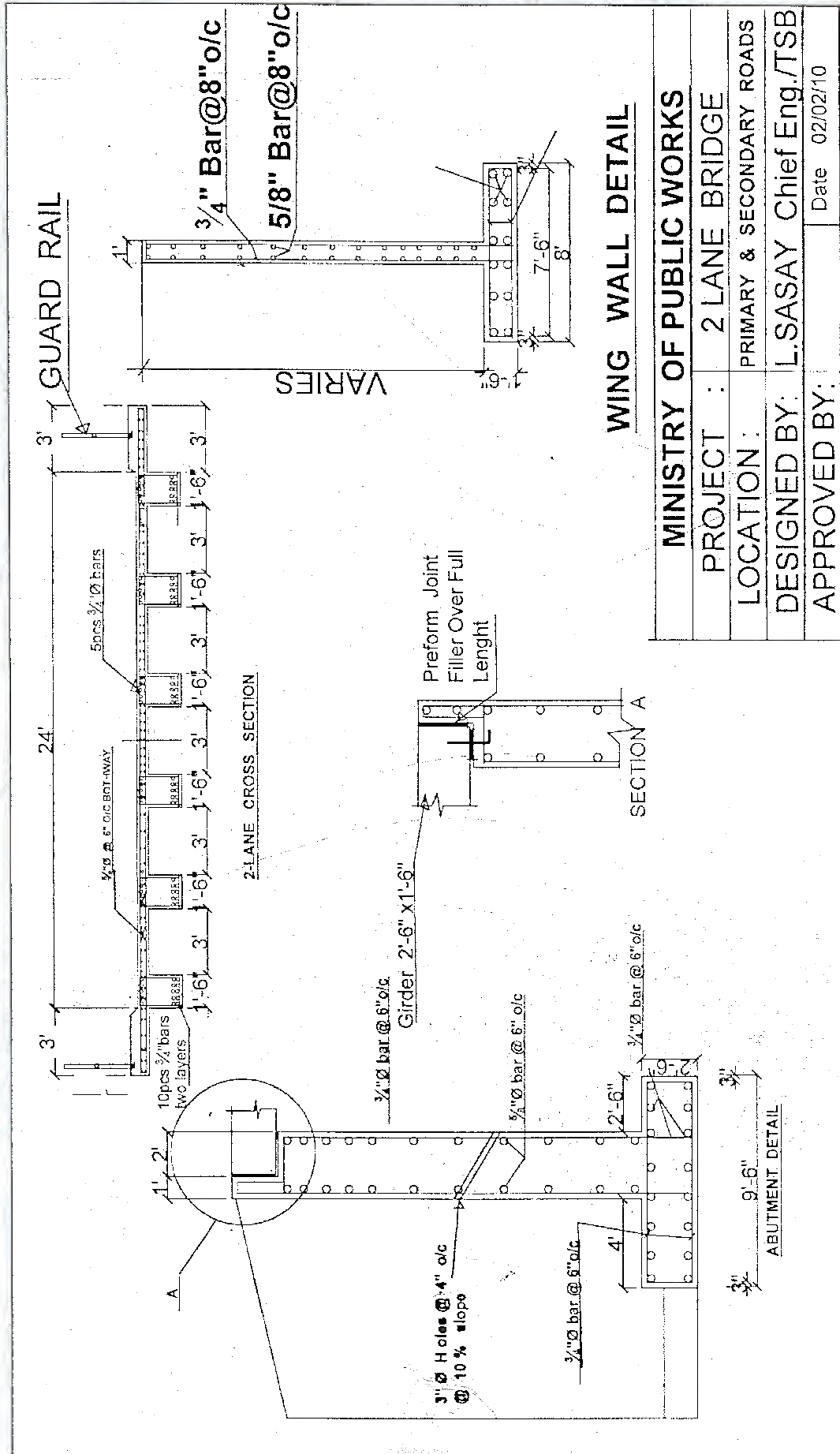
- CONCRETE STRESS @ 28 DAYS 3000 PSI
- STEEL YIELD STRESS =36000 PSI
- CONCRETE COVER = 3inches
- MINIMUM STEEL LAP = 30 inches
- SOIL PRESSURE (MIN.) =3000 PSI
- MIX RATIO 1: 1 1/2: 2
- COARSE AGGREGATE 1/4"- 1/2"
- BLINDING COARSE MIX RATIO 1:3:4



**PIER PLAN**

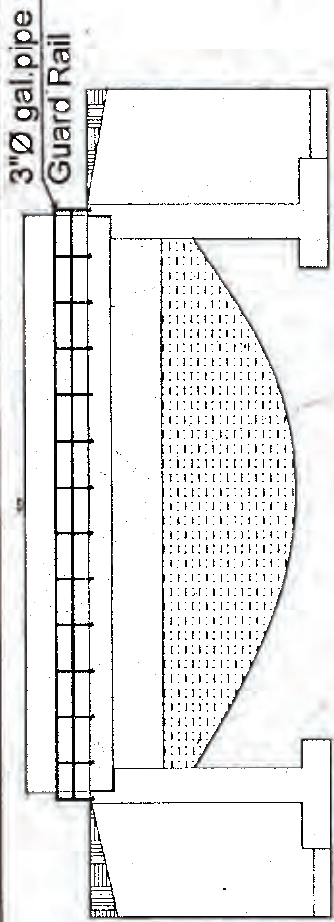
**PIER DETAIL**

MINISTRY OF PUBLIC WORKS
PROJECT : TYPICAL PIER DETAIL
LOCATION : PUNJAB & HARYANA REGION
DESIGNED BY : T. SANSAL, Chief Engr., JTSB
APPROVED BY : <span style="float: right;">Date: 06/08/88</span>

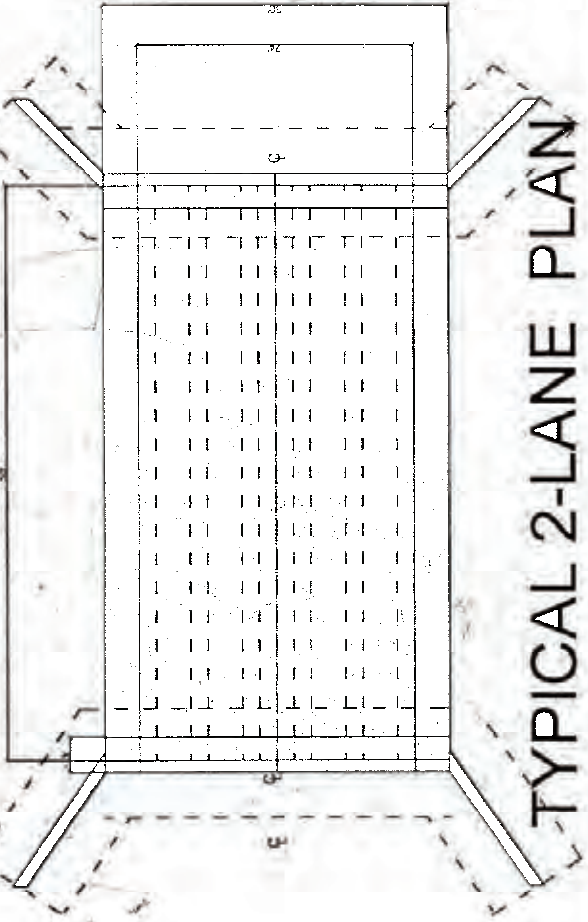


**WING WALL DETAIL**

<b>MINISTRY OF PUBLIC WORKS</b>	
<b>PROJECT :</b>	2 LANE BRIDGE
<b>LOCATION :</b>	PRIMARY & SECONDARY ROADS
<b>DESIGNED BY:</b>	L.SASAY Chief Eng./TSB
<b>APPROVED BY:</b>	Date 02/02/10



TYPICAL ELEVATION



TYPICAL 2-LANE PLAN

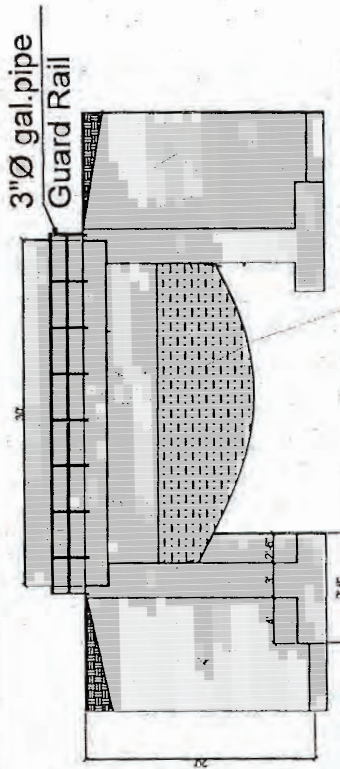
**TECHNICAL SPECIFICATION (AASHTO)**

- CONCRETE STRESS @ 28 DAYS =3000 PSI
- STEEL YIELD STRESS =36000 PSI
- CONCRETE COVER = 3inches
- MINIMUM STEEL LAP = 30 inches
- SOIL PRESSURE (MIN.) =3000 PSI
- MIX RATIO 1:1 1/2:2
- COARSE AGGREGATE X<sub>2</sub>-X<sub>3</sub>
- BLINDING COARSE MIX RATIO 1:3:4

MINISTRY OF PUBLIC WORKS
PROJECT: TYPICAL BRIDGE 30-50
LOCATION: PRIMARY & SECONDARY ROADS
DESIGNED BY: T. SASAKI, Chief Eng. (T&B)
APPROVED BY: [Signature] Date: 02/01/18



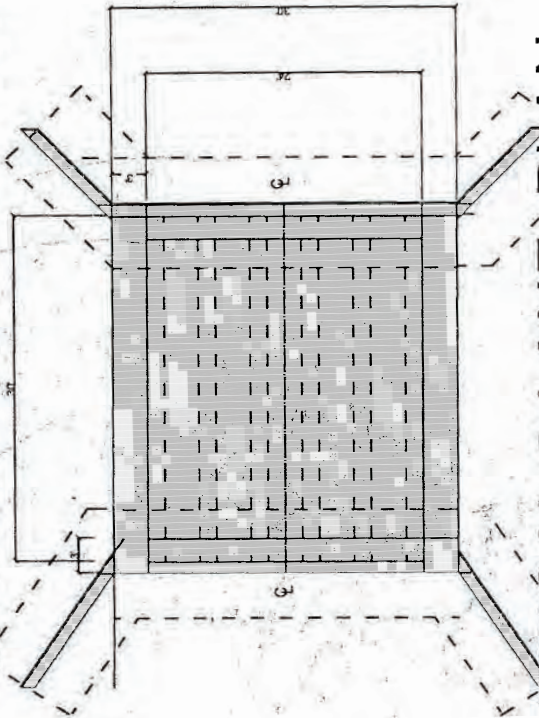




**TECHNICAL SPECIFICATION (AASHTO)**

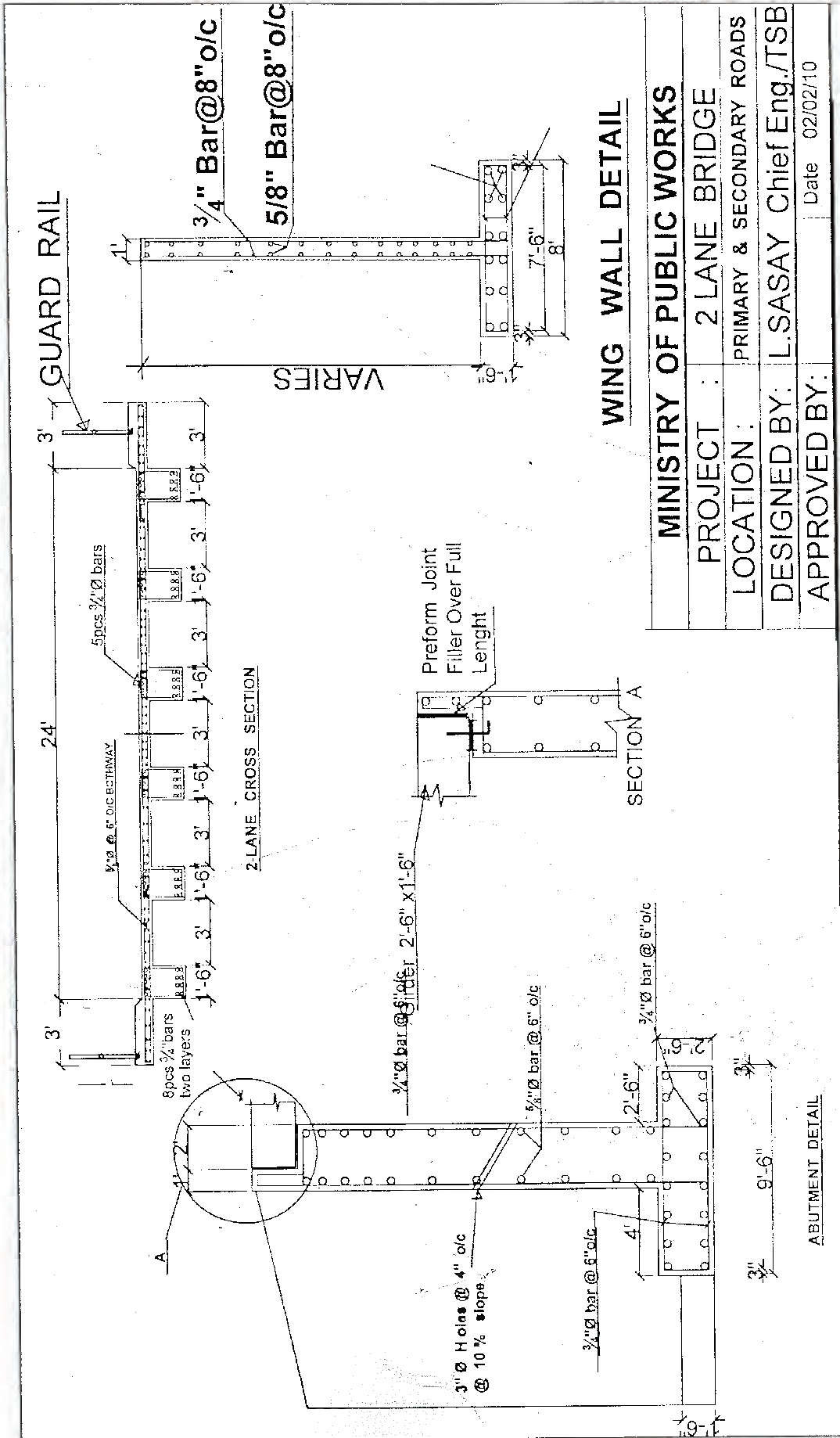
- CONCRETE STRESS @ 28 DAYS 3000 PSI
- STEEL YIELD STRESS =36000 PSI
- CONCRETE COVER = 3inches
- MINIMUM STEEL LAP = 30 inches
- SOIL PRESSURE (MIN.) =3000 PSI
- MIX RATIO 1:1 1/2:2
- COARSE AGGREGATE 1/2"-1 1/2"
- BLINDING COARSE MIX RATIO 1:3:4

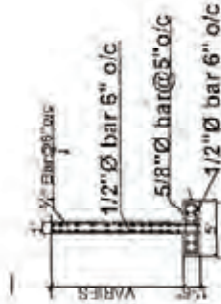
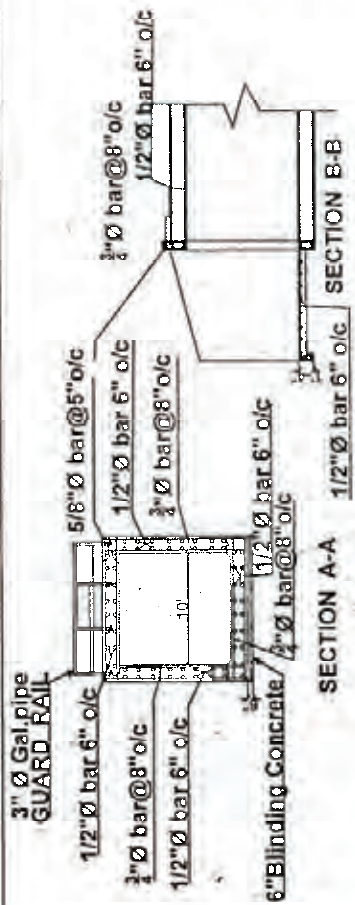
**TYPICAL ELEVATION**



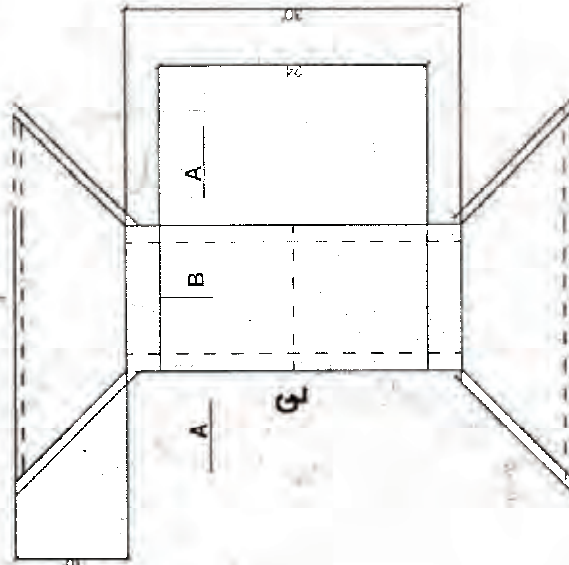
**TYPICAL 2-LANE PLAN**

MINISTRY OF PUBLIC WORKS	
PROJECT :	TYPICAL BRIDGE 30'-50'
LOCATION :	PRIMARY & SECONDARY ROADS
DESIGNED BY :	L.SASAY Chief Eng./TSB
APPROVED BY :	Page 02/02/16





WING WALL DETAIL



PLAN

**TECHNICAL SPECIFICATION (AASHTO)**

- CONCRETE STRESS @ 28 DAYS 3000 PSI
- STEEL YIELD STRESS =36000 PSI
- CONCRETE COVER = 3inches
- MINIMUM STEEL LAP = 30 inches
- SOIL PRESSURE (MIN) =3000 PSI
- MIX RATIO 1:1 1/2: 2
- COARSE AGGREGATE 3/4" 2"
- BLINDING COURSE MIX RATIO 1:3:4

**MINISTRY OF PUBLIC WORKS**

PROJECT	SINGLE BOX CULVERT
LOCATION	PRIMARY AND SECONDARY ROADS
DESIGNED BY	LSASAY Chief Eng. ITSB
APPROVED BY	DATE 12/02/10