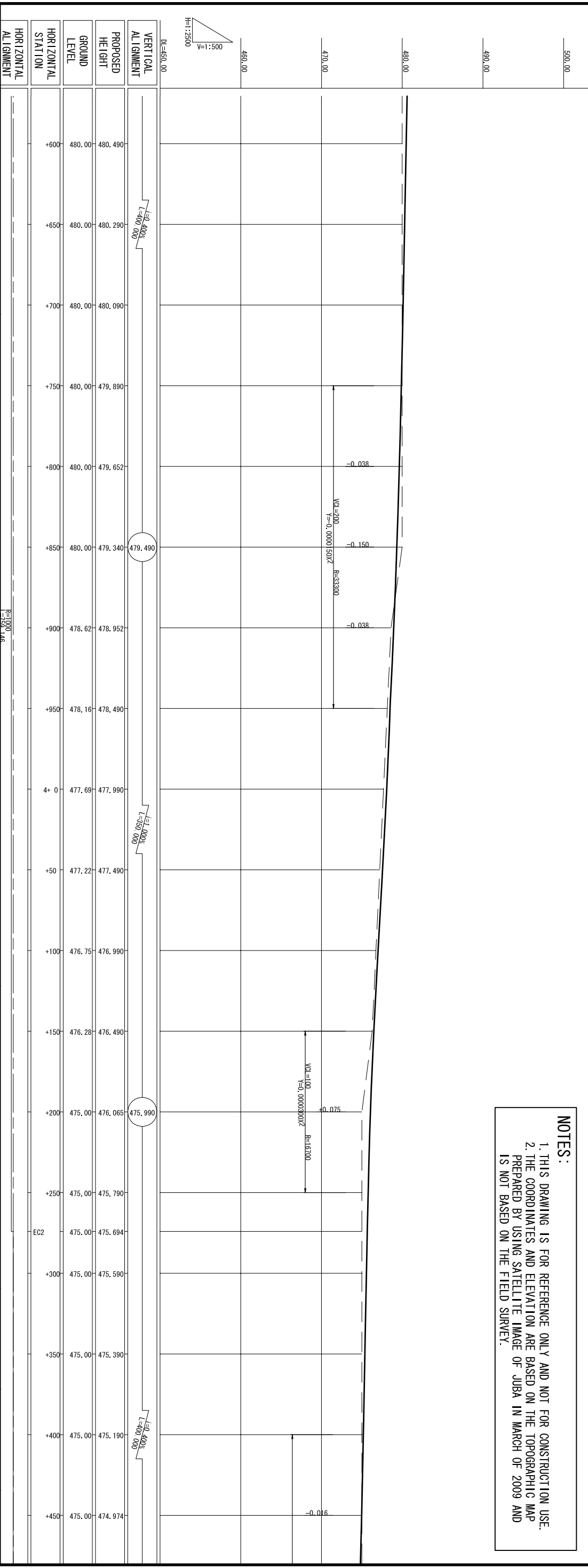
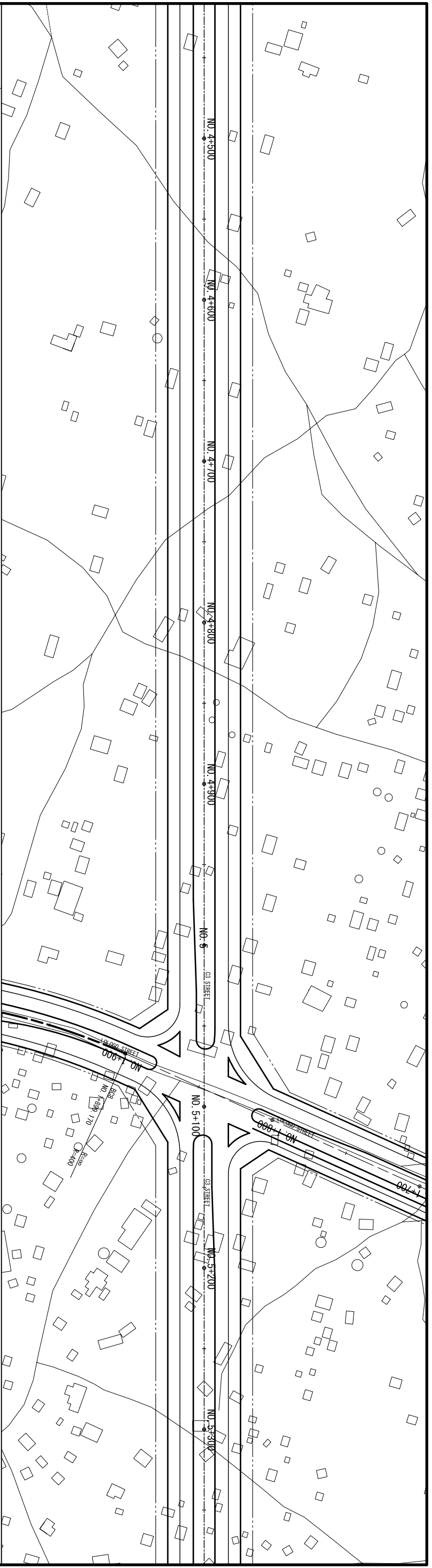


**NOTES:**

1. THIS DRAWING IS FOR REFERENCE ONLY AND NOT FOR CONSTRUCTION USE.
2. THE COORDINATES AND ELEVATION ARE BASED ON THE TOPOGRAPHIC MAP PREPARED BY USING SATELLITE IMAGE OF JUBA IN MARCH OF 2009 AND IS NOT BASED ON THE FIELD SURVEY.

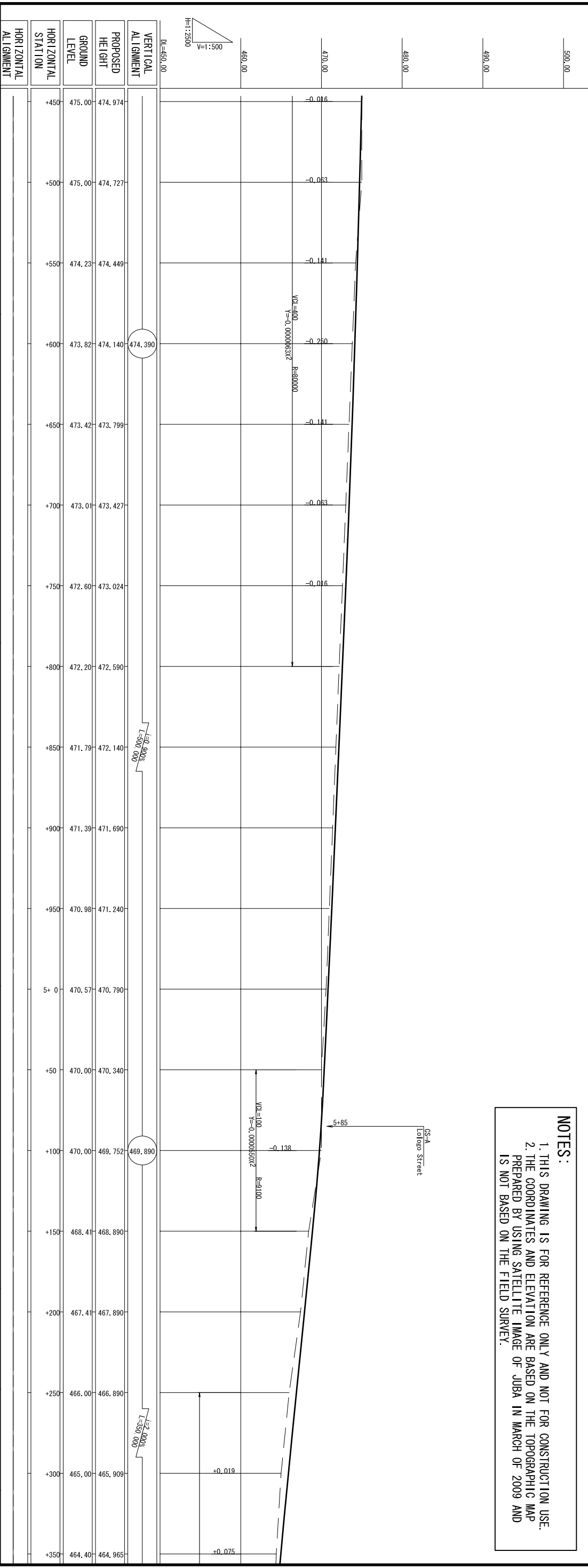


MINISTRY OF TRANSPORT AND ROADS GOVERNMENT OF SOUTHERN SUDAN MINISTRY OF PHYSICAL INFRASTRUCTURE CENTRAL EQUATORIA STATE		JUBA URBAN TRANSPORT INFRASTRUCTURE AND CAPACITY DEVELOPMENT STUDY IN THE SOUTHERN SUDAN		CTI ENGINEERING INTERNATIONAL CO.,LTD YACHIYO ENGINEERING CO.,LTD.		TITLE : PLAN AND PROFILE (ROUTE-C3) (5/14)		SCALE H=1:2500, V=1:500		Drawing No. PL3-5	
										Sheet No. 19	



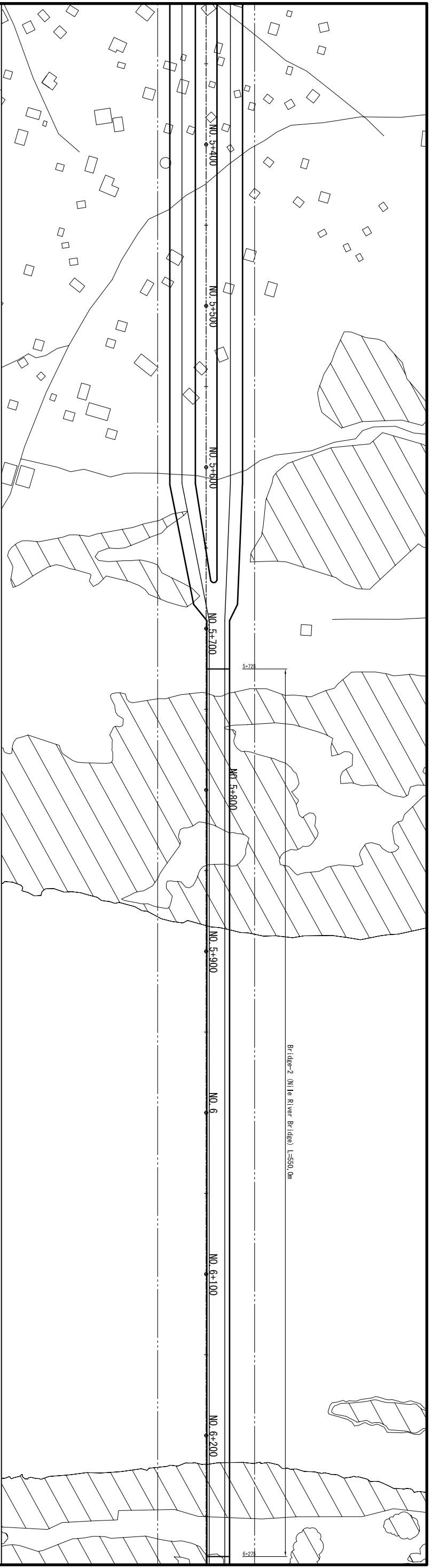
**NOTES:**

1. THIS DRAWING IS FOR REFERENCE ONLY AND NOT FOR CONSTRUCTION USE.
2. THE COORDINATES AND ELEVATION ARE BASED ON THE TOPOGRAPHIC MAP PREPARED BY USING SATELLITE IMAGE OF JUBA IN MARCH OF 2009 AND IS NOT BASED ON THE FIELD SURVEY.

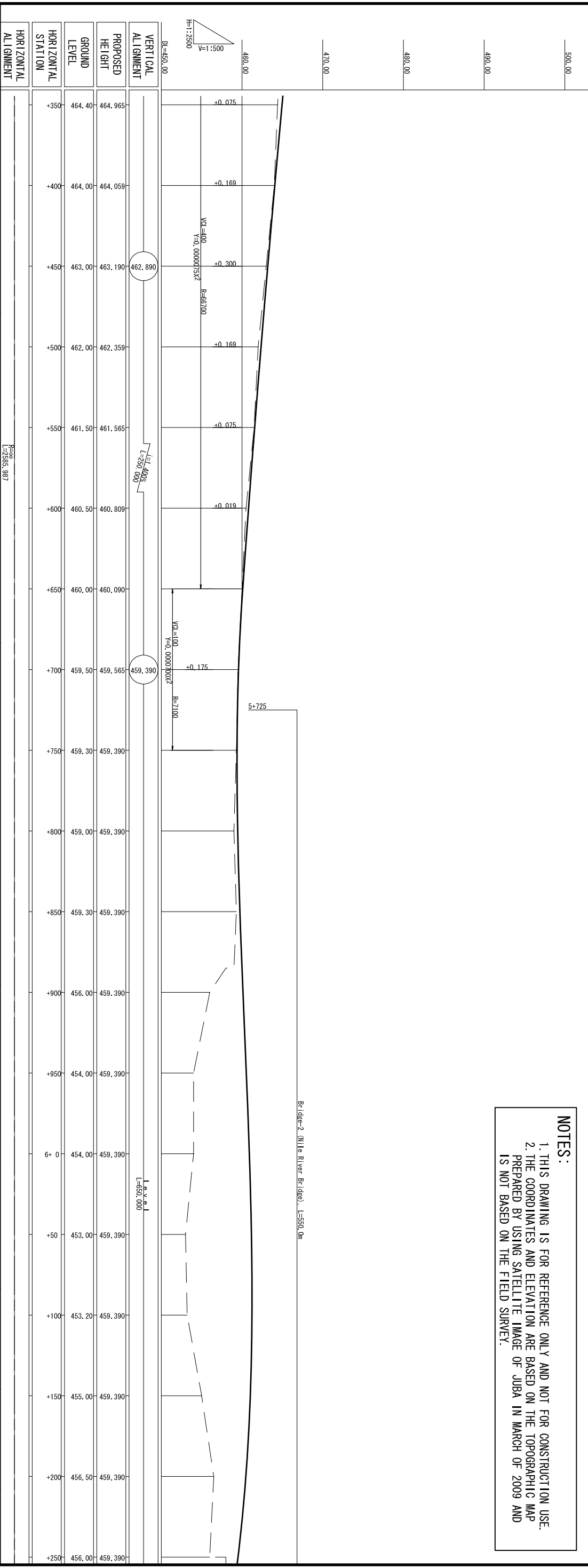


HORIZONTAL STATION	GROUND LEVEL	PROPOSED HEIGHT	VERTICAL ALIGNMENT
+450	475.00	474.974	
+500	475.00	474.727	
+550	474.23	474.449	
+600	473.82	474.140	474.390
+650	473.42	473.799	
+700	473.01	473.427	
+750	472.60	473.024	
+800	472.20	472.590	
+850	471.79	472.140	
+900	471.39	471.690	
+950	470.98	471.240	
+5+0	470.57	470.790	
+50	470.00	470.340	
+100	470.00	469.752	469.890
+150	468.41	468.890	
+200	467.41	467.890	
+250	466.00	466.890	
+300	465.00	465.909	+0.019
+350	464.40	464.965	+0.075

MINISTRY OF TRANSPORT AND ROADS GOVERNMENT OF SOUTHERN SUDAN MINISTRY OF PHYSICAL INFRASTRUCTURE CENTRAL EQUATORIA STATE		JUBA URBAN TRANSPORT INFRASTRUCTURE AND CAPACITY DEVELOPMENT STUDY IN THE SOUTHERN SUDAN		CTI ENGINEERING INTERNATIONAL CO.,LTD YACHIYO ENGINEERING CO.,LTD.		TITLE : PLAN AND PROFILE (ROUTE-C3) (6/14)		SCALE H=1:2500, V=1:500		Drawing No. Sheet No.	
						PL3-6				20	



**NOTES:**  
 1. THIS DRAWING IS FOR REFERENCE ONLY AND NOT FOR CONSTRUCTION USE.  
 2. THE COORDINATES AND ELEVATION ARE BASED ON THE TOPOGRAPHIC MAP PREPARED BY USING SATELLITE IMAGE OF JUBA IN MARCH OF 2009 AND IS NOT BASED ON THE FIELD SURVEY.



HORIZONTAL STATION	GROUND LEVEL	PROPOSED HEIGHT	VERTICAL ALIGNMENT
+350	464.40	464.965	
+400	464.00	464.059	
+450	463.00	463.190	462.890
+500	462.00	462.359	
+550	461.50	461.565	
+600	460.50	460.809	
+650	460.00	460.090	
+700	459.50	459.565	459.390
+750	459.30	459.390	
+800	459.00	459.390	
+850	459.30	459.390	
+900	456.00	459.390	
+950	454.00	459.390	
+0	454.00	459.390	
+50	453.00	459.390	
+100	453.20	459.390	
+150	455.00	459.390	
+200	456.50	459.390	
+250	456.00	459.390	

MINISTRY OF TRANSPORT AND ROADS  
 GOVERNMENT OF SOUTHERN SUDAN  
 MINISTRY OF PHYSICAL INFRASTRUCTURE  
 CENTRAL EQUATORIA STATE

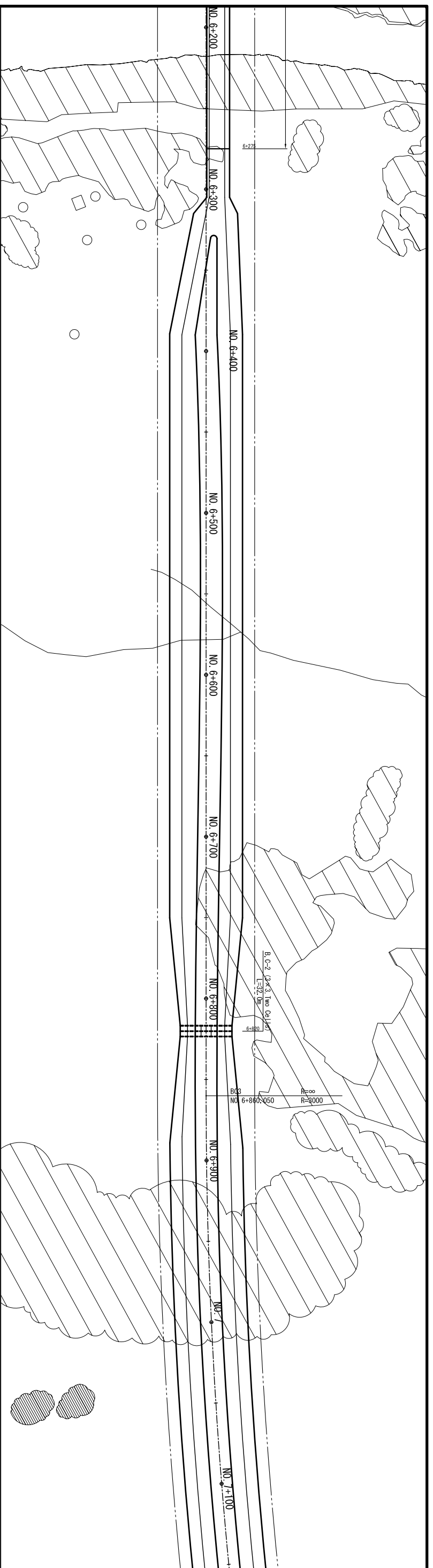
JUBA URBAN TRANSPORT INFRASTRUCTURE  
 AND CAPACITY DEVELOPMENT STUDY  
 IN THE SOUTHERN SUDAN

CTI ENGINEERING INTERNATIONAL CO.,LTD  
 YACHIYO ENGINEERING CO.,LTD.

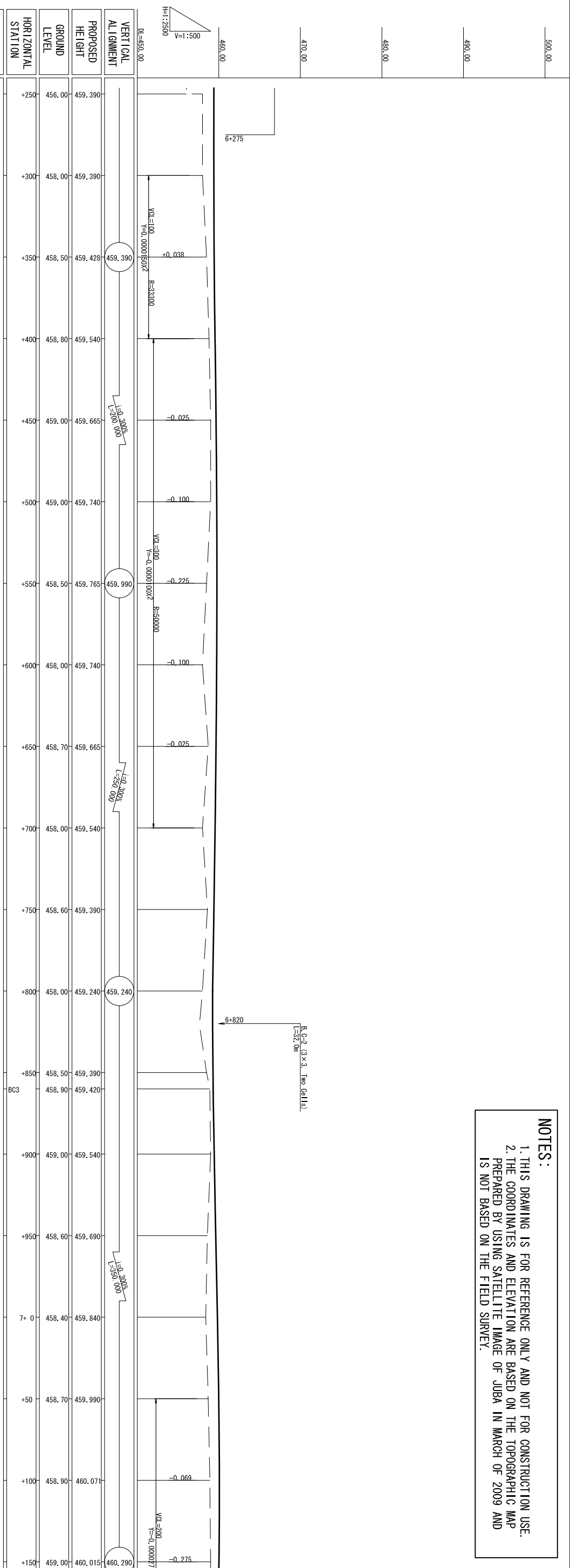
TITLE :  
 PLAN AND PROFILE (ROUTE-C3) (7/14)

SCALE  
 H=1:2500, V=1:500

Drawing No. PL3-7  
 Sheet No. 21



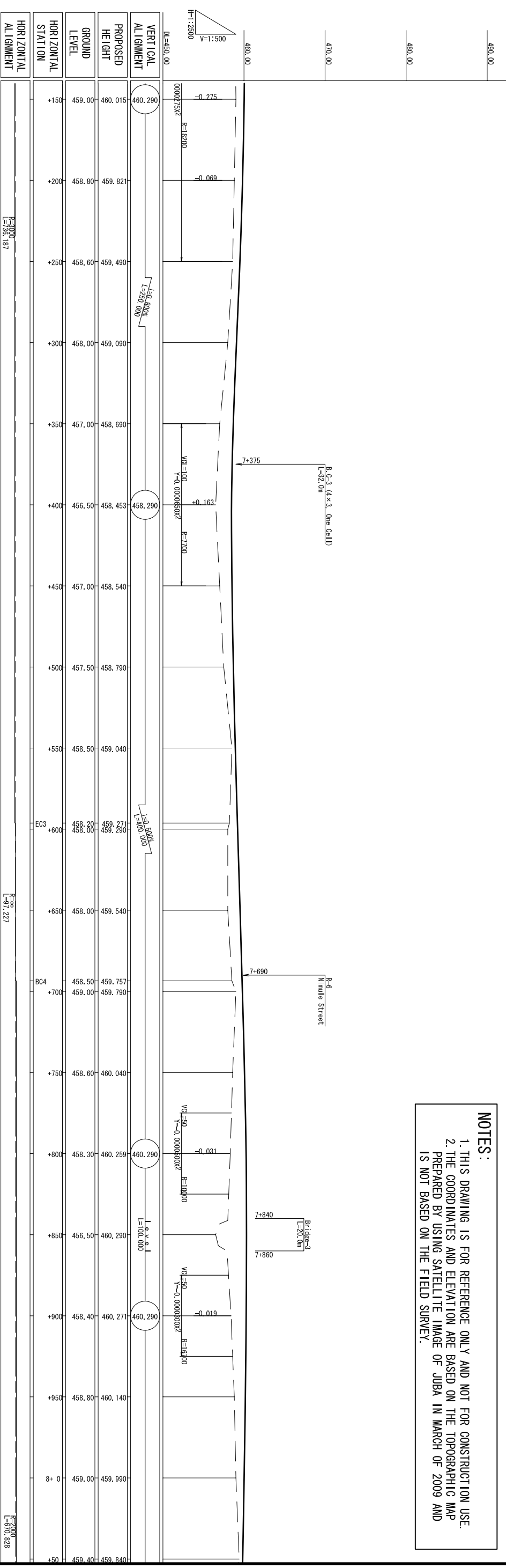
**NOTES:**  
 1. THIS DRAWING IS FOR REFERENCE ONLY AND NOT FOR CONSTRUCTION USE.  
 2. THE COORDINATES AND ELEVATION ARE BASED ON THE TOPOGRAPHIC MAP PREPARED BY USING SATELLITE IMAGE OF JUBA IN MARCH OF 2009 AND IS NOT BASED ON THE FIELD SURVEY.



MINISTRY OF TRANSPORT AND ROADS GOVERNMENT OF SOUTHERN SUDAN MINISTRY OF PHYSICAL INFRASTRUCTURE CENTRAL EQUATORIA STATE		JUBA URBAN TRANSPORT INFRASTRUCTURE AND CAPACITY DEVELOPMENT STUDY IN THE SOUTHERN SUDAN		CTI ENGINEERING INTERNATIONAL CO.,LTD YACHIYO ENGINEERING CO.,LTD.		TITLE : PLAN AND PROFILE (ROUTE-C3) (8/14)		SCALE H=1:2500, V=1:500		Drawing No. Sheet No.		PL3-8 22	
-----------------------------------------------------------------------------------------------------------------------------------	--	------------------------------------------------------------------------------------------------	--	-----------------------------------------------------------------------	--	-----------------------------------------------	--	----------------------------	--	--------------------------	--	-------------	--



**NOTES:**  
 1. THIS DRAWING IS FOR REFERENCE ONLY AND NOT FOR CONSTRUCTION USE.  
 2. THE COORDINATES AND ELEVATION ARE BASED ON THE TOPOGRAPHIC MAP PREPARED BY USING SATELLITE IMAGE OF JUBA IN MARCH OF 2009 AND IS NOT BASED ON THE FIELD SURVEY.



HORIZONTAL ALIGNMENT	HORIZONTAL STATION	GROUND LEVEL	PROPOSED HEIGHT	VERTICAL ALIGNMENT
[Scale: 1:2500, 1:500]	+150	459.00	459.015	[Scale: 1:2500, 1:500]
	+200	458.80	459.821	
	+250	458.60	459.490	
	+300	458.00	459.090	
	+350	457.00	458.690	
	+400	456.50	458.453	
	+450	457.00	458.540	
	+500	457.50	458.790	
	+550	458.50	459.040	
	+600	458.20 458.00	459.271 459.290	
[Scale: 1:2500, 1:500]	+650	458.00	459.540	[Scale: 1:2500, 1:500]
	+700	458.50 459.00	459.757 459.790	
	+750	458.60	460.040	
	+800	458.30	460.250	
	+850	456.50	460.290	
	+900	458.40	460.271	
	+950	458.80	460.140	
	8+0	459.00	459.990	
	+90	459.40	459.840	

MINISTRY OF TRANSPORT AND ROADS  
 GOVERNMENT OF SOUTHERN SUDAN  
 MINISTRY OF PHYSICAL INFRASTRUCTURE  
 CENTRAL EQUATORIA STATE

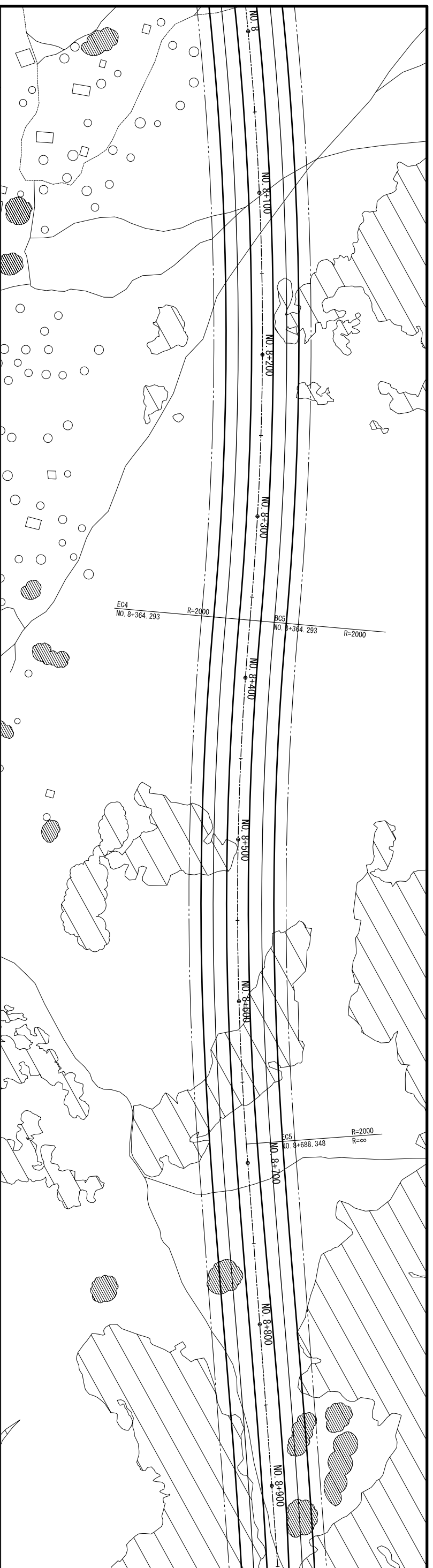
JUBA URBAN TRANSPORT INFRASTRUCTURE  
 AND CAPACITY DEVELOPMENT STUDY  
 IN THE SOUTHERN SUDAN

CTI ENGINEERING INTERNATIONAL CO.,LTD  
 YACHIYO ENGINEERING CO.,LTD.

TITLE :  
 PLAN AND PROFILE (ROUTE-C3) (9/14)

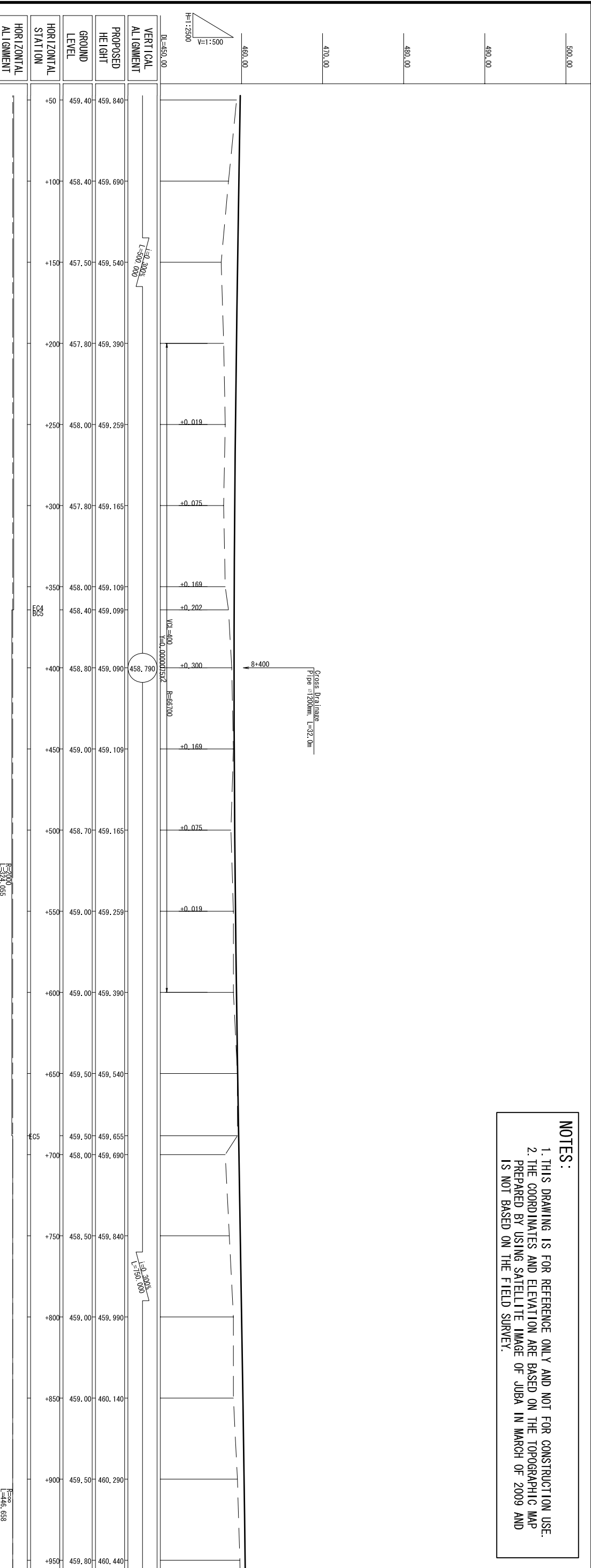
SCALE  
 H=1:2500, V=1:500

Drawing No. PL3-9  
 Sheet No. 23



**NOTES:**

1. THIS DRAWING IS FOR REFERENCE ONLY AND NOT FOR CONSTRUCTION USE.
2. THE COORDINATES AND ELEVATION ARE BASED ON THE TOPOGRAPHIC MAP PREPARED BY USING SATELLITE IMAGE OF JUBA IN MARCH OF 2009 AND IS NOT BASED ON THE FIELD SURVEY.



HORIZONTAL STATION	GROUND LEVEL	PROPOSED HEIGHT	VERTICAL ALIGNMENT
+50	459.40	459.840	
+100	458.40	459.690	
+150	457.50	459.540	
+200	457.80	459.390	
+250	458.00	459.259	+0.019
+300	457.80	459.165	+0.075
+350	458.00	459.109	+0.169
EC4 BC5	458.40	459.099	+0.202
+400	458.80	459.090	+0.300
+450	459.00	459.109	+0.169
+500	458.70	459.165	+0.075
+550	459.00	459.259	+0.019
+600	459.00	459.390	
+650	459.50	459.540	
EC5	459.50	459.655	
+700	458.00	459.690	
+750	458.50	459.840	
+800	459.00	459.990	
+850	459.00	460.140	
+900	459.50	460.290	
+950	459.80	460.440	

MINISTRY OF TRANSPORT AND ROADS  
GOVERNMENT OF SOUTHERN SUDAN  
MINISTRY OF PHYSICAL INFRASTRUCTURE  
CENTRAL EQUATORIA STATE

JUBA URBAN TRANSPORT INFRASTRUCTURE  
AND CAPACITY DEVELOPMENT STUDY  
IN THE SOUTHERN SUDAN

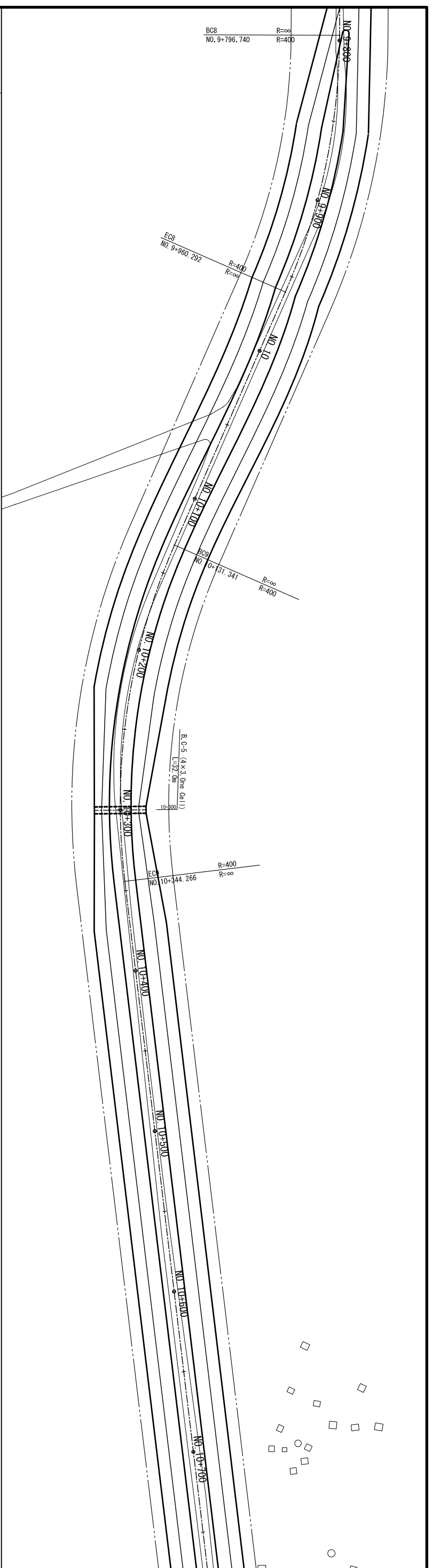
CTI ENGINEERING INTERNATIONAL CO.,LTD  
YACHIYO ENGINEERING CO.,LTD.

TITLE :  
PLAN AND PROFILE (ROUTE-C3) (10/14)

SCALE  
H=1:2500, V=1:500

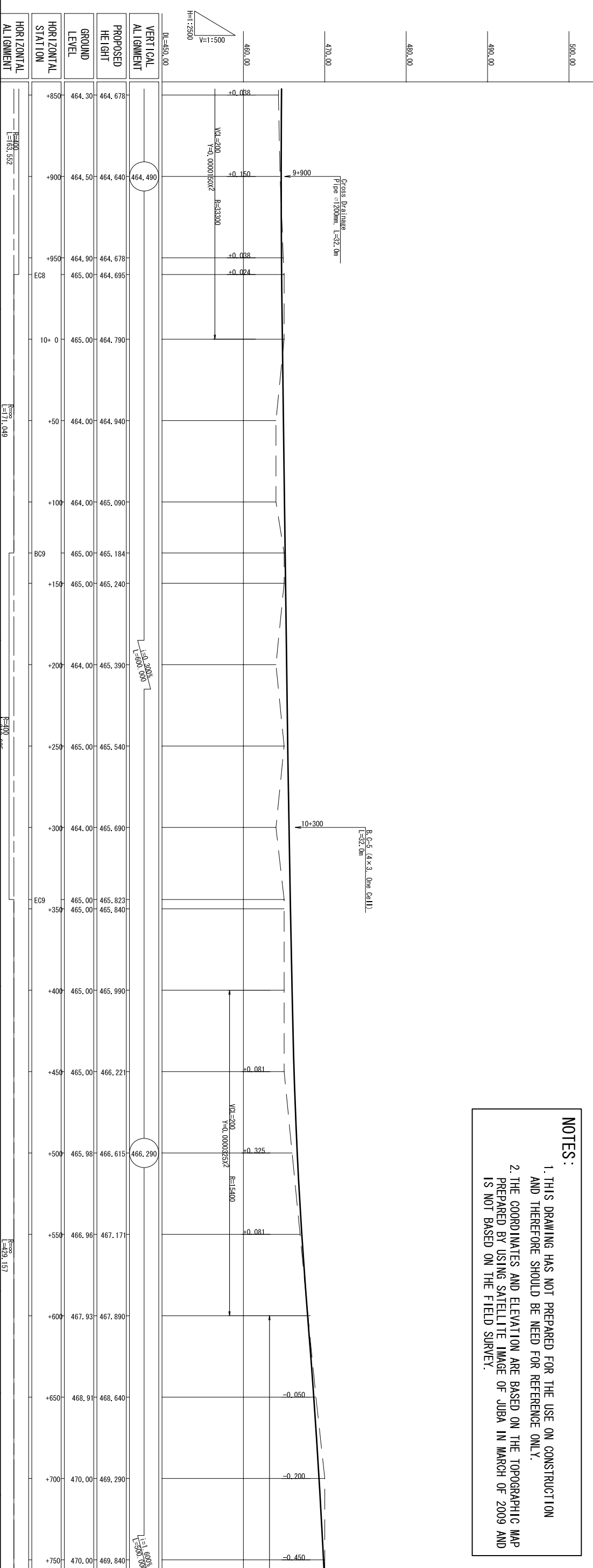
Drawing No. PL3-10  
Sheet No. 24





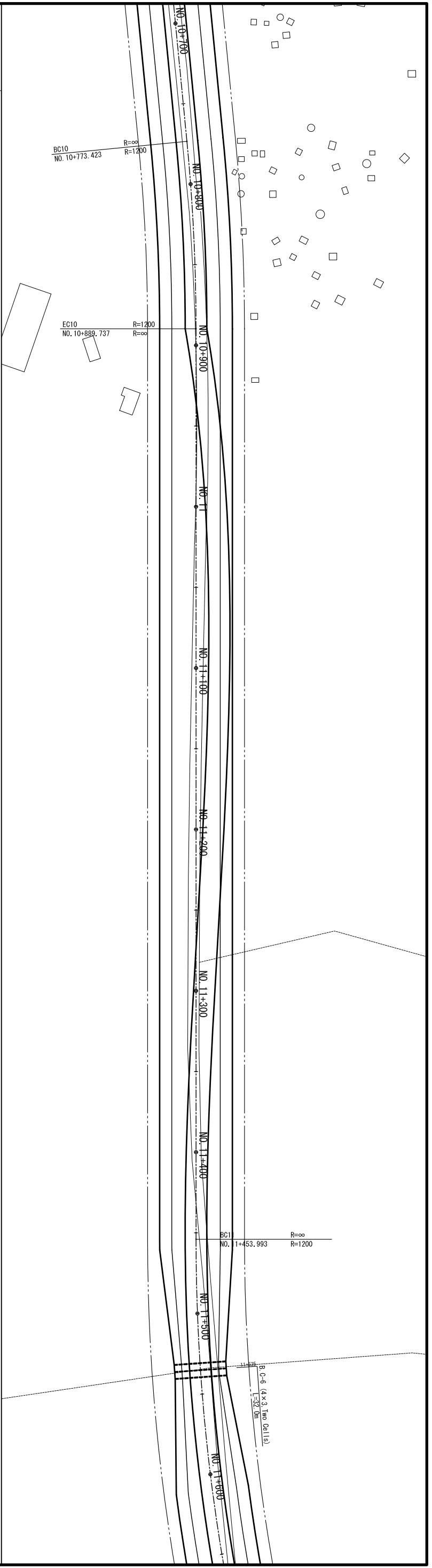
**NOTES:**

1. THIS DRAWING HAS NOT PREPARED FOR THE USE ON CONSTRUCTION AND THEREFORE SHOULD BE NEED FOR REFERENCE ONLY.
2. THE COORDINATES AND ELEVATION ARE BASED ON THE TOPOGRAPHIC MAP PREPARED BY USING SATELLITE IMAGE OF JUBA IN MARCH OF 2009 AND IS NOT BASED ON THE FIELD SURVEY.

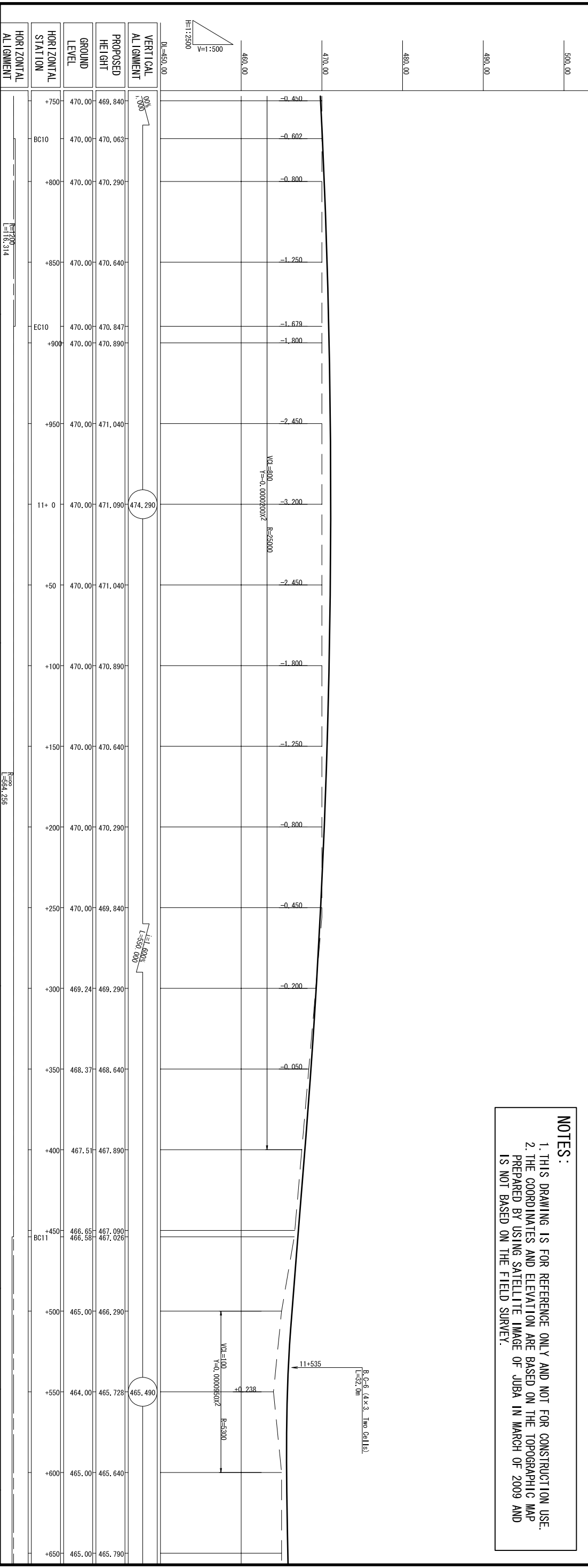


MINISTRY OF TRANSPORT AND ROADS GOVERNMENT OF SOUTHERN SUDAN MINISTRY OF PHYSICAL INFRASTRUCTURE CENTRAL EQUATORIA STATE		JUBA URBAN TRANSPORT INFRASTRUCTURE AND CAPACITY DEVELOPMENT STUDY IN THE SOUTHERN SUDAN		CTI ENGINEERING INTERNATIONAL CO.,LTD YACHIYO ENGINEERING CO.,LTD.		TITLE : PLAN AND PROFILE (ROUTE-C3) (12/14)		SCALE H=1:2500, V=1:500		Drawing No. PL3-12	
HORIZONTAL ALIGNMENT L=160.552		HORIZONTAL ALIGNMENT L=171.049		HORIZONTAL ALIGNMENT L=120.000		HORIZONTAL ALIGNMENT L=120.000		HORIZONTAL ALIGNMENT L=120.000		HORIZONTAL ALIGNMENT L=120.000	





**NOTES:**  
 1. THIS DRAWING IS FOR REFERENCE ONLY AND NOT FOR CONSTRUCTION USE.  
 2. THE COORDINATES AND ELEVATION ARE BASED ON THE TOPOGRAPHIC MAP PREPARED BY USING SATELLITE IMAGE OF JUBA IN MARCH OF 2009 AND IS NOT BASED ON THE FIELD SURVEY.



MINISTRY OF TRANSPORT AND ROADS GOVERNMENT OF SOUTHERN SUDAN MINISTRY OF PHYSICAL INFRASTRUCTURE CENTRAL EQUATORIA STATE		JUBA URBAN TRANSPORT INFRASTRUCTURE AND CAPACITY DEVELOPMENT STUDY IN THE SOUTHERN SUDAN		CTI ENGINEERING INTERNATIONAL CO.,LTD YACHIYO ENGINEERING CO.,LTD.		<b>TITLE :</b> PLAN AND PROFILE (ROUTE-C3) (1/3/14)		<b>SCALE</b> H=1:2500, V=1:500		<b>Drawing No.</b> PL3-13	
								<b>Sheet No.</b> 27			