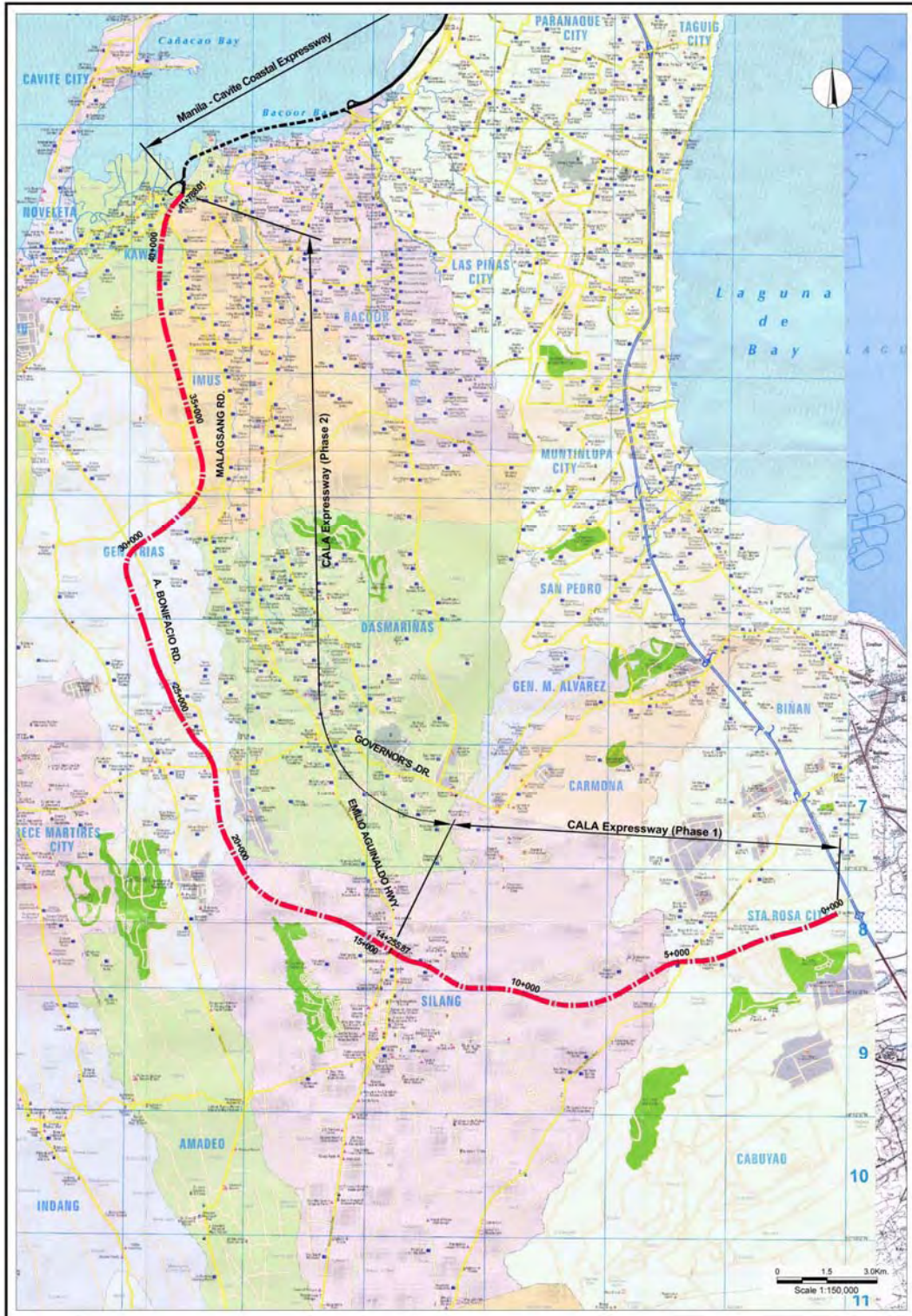


PROJECT NO. 6

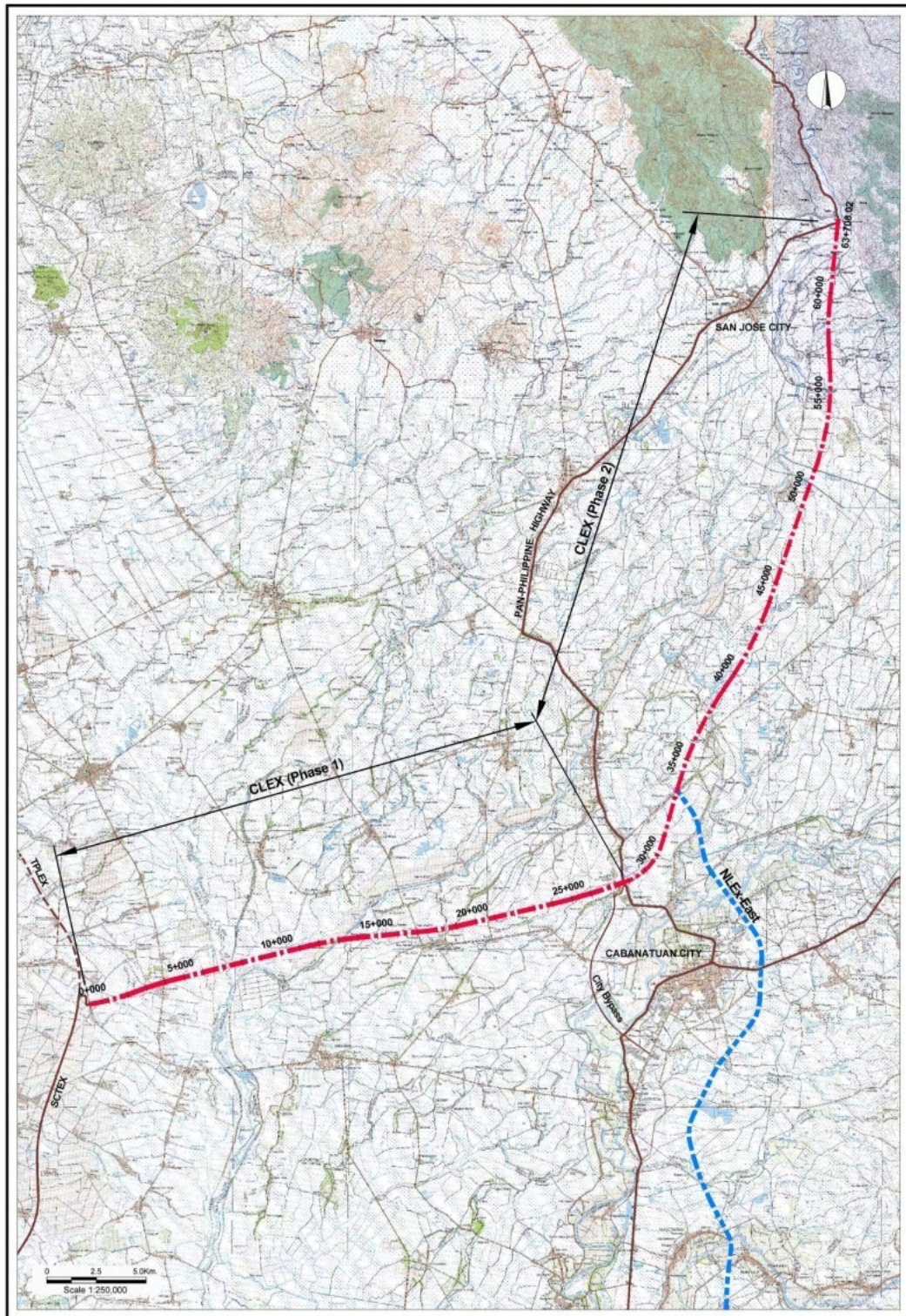
<i>Project Name</i>		CALA Expressway
<i>Objectives of the Project</i>		<ul style="list-style-type: none"> · To decongest Cavite roads traffic, particularly Aguinaldo Highway and Governor's Drive. · To provide access to economic zones to support economic development.
<i>Project Length</i>		63.9 km.
<i>Type of Structure</i>		· Cut/fill
<i>Estimated Project Cost (Billion Pesos at 2010 Prices)</i>	<i>Construction Cost</i>	15.81
	<i>ROW Acquisition</i>	1.41
	<i>Engineering Cost</i>	1.90
	<i>Admin. Cost</i>	0.56
	Total	19.68
<i>O & M Cost (Billion Pesos at 2010 Prices)</i>	<i>Operation Cost per Year</i>	0.237
	<i>Routine Maintenance Cost per Year</i>	0.177
	Total	0.414
	<i>Periodic Maintenance Cost at Every 10 Years</i>	1.581
<i>Estimated Traffic Volume (PCU/day) (Assumed Opening Year: 2015)</i>		58,400-80,400
<i>EIRR (Assumed Opening Year: 2015)</i>		49.92%
<i>Priority Group</i>		First



CALA Expressway

PROJECT NO. 7

<i>Project Name</i>		Central Luzon Expressway
<i>Objectives of the Project</i>		<ul style="list-style-type: none"> · To connect SCTEx and NLEx-East to efficiently distribute traffic to both expressways. · To decongest traffic on the Pan Philippine Highway until such time that NLEx-East becomes operational.
<i>Project Length</i>		63.9 km.
<i>Type of Structure</i>		· Cut/Fill
<i>Estimated Project Cost (Billion Pesos at 2010 Prices)</i>	<i>Construction Cost</i>	24.26
	<i>ROW Acquisition</i>	1.44
	<i>Engineering Cost</i>	2.91
	<i>Admin. Cost</i>	0.62
	Total	29.23
<i>O & M Cost (Billion Pesos at 2010 Prices)</i>	<i>Operation Cost per Year</i>	0.364
	<i>Routine Maintenance Cost per Year</i>	0.291
	Total	0.655
	<i>Periodic Maintenance Cost at Every 10 Years</i>	2.426
<i>Estimated Traffic Volume (PCU/day) (Assumed Opening Year: 2015)</i>		11,200-22,800
<i>EIRR (Assumed Opening Year: 2015)</i>		15.64%
<i>Priority Group</i>		First



Central Luzon Expressway

PROJECT NO. 8

<i>Project Name</i>		Calamba-Los Baños Expressway
<i>Objectives of the Project</i>		<ul style="list-style-type: none"> · To decongest traffic of national roads. · To support tourism industry along the corridor. · To contribute to flood control when Laguna de Bay side alignment is selected.
<i>Project Length</i>		15.5 km
<i>Type of Structure</i>		<ul style="list-style-type: none"> · Cut/Fill and/or combined structure of flood control dike and road
<i>Estimated Project Cost (Billion Pesos at 2010 Prices)</i>	<i>Construction Cost</i>	5.05
	<i>ROW Acquisition</i>	0.85
	<i>Engineering Cost</i>	0.40
	<i>Admin. Cost</i>	0.15
	Total	6.45
<i>O & M Cost (Billion Pesos at 2010 Prices)</i>	<i>Operation Cost per Year</i>	0.076
	<i>Routine Maintenance Cost per Year</i>	0.076
	Total	0.152
	<i>Periodic Maintenance Cost at Every 10 Years</i>	0.505
<i>Estimated Traffic Volume (PCU/day) (Assumed Opening Year: 2015)</i>		24,300
<i>EIRR (Assumed Opening Year: 2015)</i>		17.40%
<i>Priority Group</i>		First



Calamba-Los Baños Expressway

PROJECT NO. 9

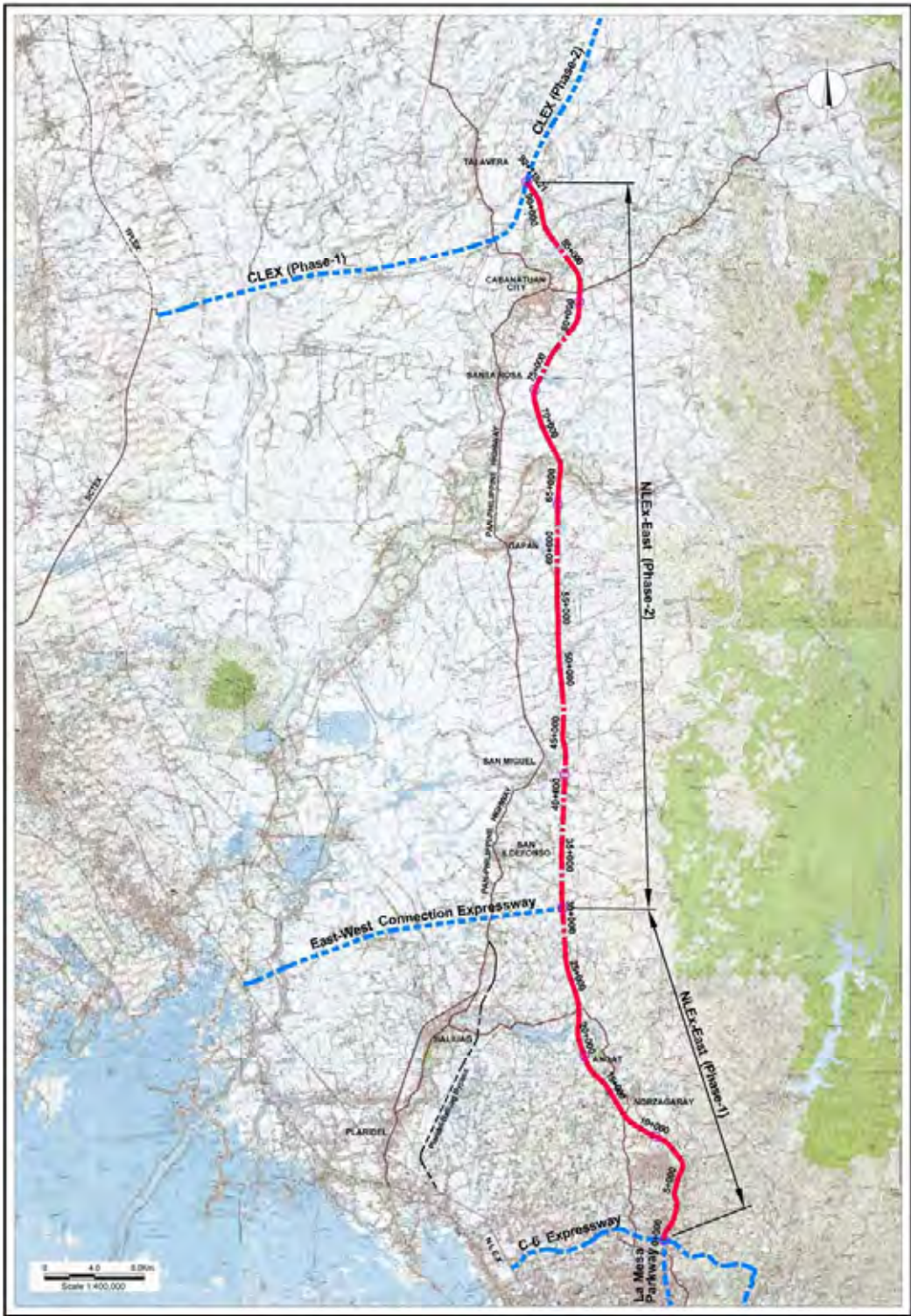
<i>Project Name</i>		SLEX Extension (to Lucena City)
<i>Objectives of the Project</i>		<ul style="list-style-type: none"> · To form South Luzon Development Transport Axis. · To contribute to economic development of Region IV-A and Region V. · To decongest of traffic on Pan Philippine Highway.
<i>Project Length</i>		47.8 km.
<i>Type of Structure</i>		· Cut/Fill
<i>Estimated Project Cost (Billion Pesos at 2010 Prices)</i>	<i>Construction Cost</i>	13.96
	<i>ROW Acquisition</i>	0.38
	<i>Engineering Cost</i>	1.68
	<i>Admin. Cost</i>	0.28
	Total	16.30
<i>O & M Cost (Billion Pesos at 2010 Prices)</i>	<i>Operation Cost per Year</i>	0.279
	<i>Routine Maintenance Cost per Year</i>	0.209
	Total	0.488
	<i>Periodic Maintenance Cost at Every 10 Years</i>	1.396
<i>Estimated Traffic Volume (PCU/day) (Assumed Opening Year: 2015)</i>		23,000
<i>EIRR (Assumed Opening Year: 2015)</i>		20.30%
<i>Priority Group</i>		First



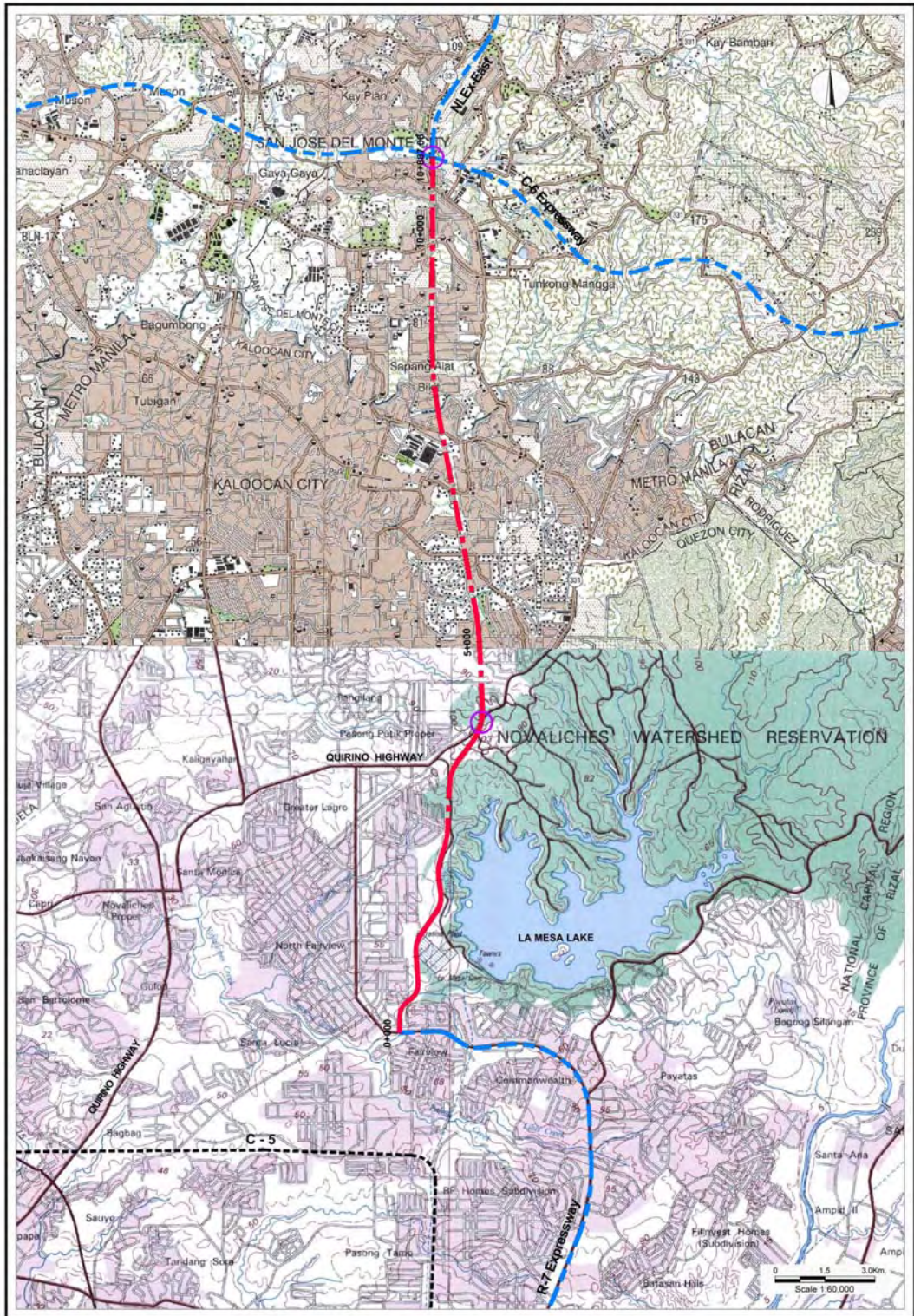
SLEX Extension (to Lucena City)

PROJECT NO. 10

<i>Project Name</i>		NLEX East and La Mesa Parkway
<i>Objectives of the Project</i>		<p>NLEX East</p> <ul style="list-style-type: none"> · To form North-East Luzon Development axis. · To decongest traffic of Pan Philippine Highway · To contribute to economic development of Regions II and III. <p>La Mesa Parkway</p> <ul style="list-style-type: none"> · To be connected with NLEx-East to form North-East Luzon Development Axis. · To decongest Quirino Highway traffic
<i>Project Length</i>		<ul style="list-style-type: none"> · NLEX East: 92.1 km · La Mesa Parkway: 10.9 km
<i>Type of Structure</i>		<ul style="list-style-type: none"> · NLEX East: Cut/Fill · La Mesa Parkway: Cut/Fill
<i>Estimated Project Cost (Billion Pesos at 2010 Prices)</i>	<i>Construction Cost</i>	32.53
	<i>ROW Acquisition</i>	1.19
	<i>Engineering Cost</i>	3.74
	<i>Admin. Cost</i>	1.12
	Total	38.58
<i>O & M Cost (Billion Pesos at 2010 Prices)</i>	<i>Operation Cost per Year</i>	0.651
	<i>Routine Maintenance Cost per Year</i>	0.574
	Total	1.225
	<i>Periodic Maintenance Cost at Every 10 Years</i>	3.253
<i>Estimated Traffic Volume (PCU/day) (Assumed Opening Year: 2015)</i>		NLEX East: 11,200-12,000; La Mesa Parkway: 59,600
<i>EIRR (Assumed Opening Year: 2015)</i>		23.25%
<i>Priority Group</i>		Second



NLEX East



La Mesa Parkway

PROJECT NO. 11

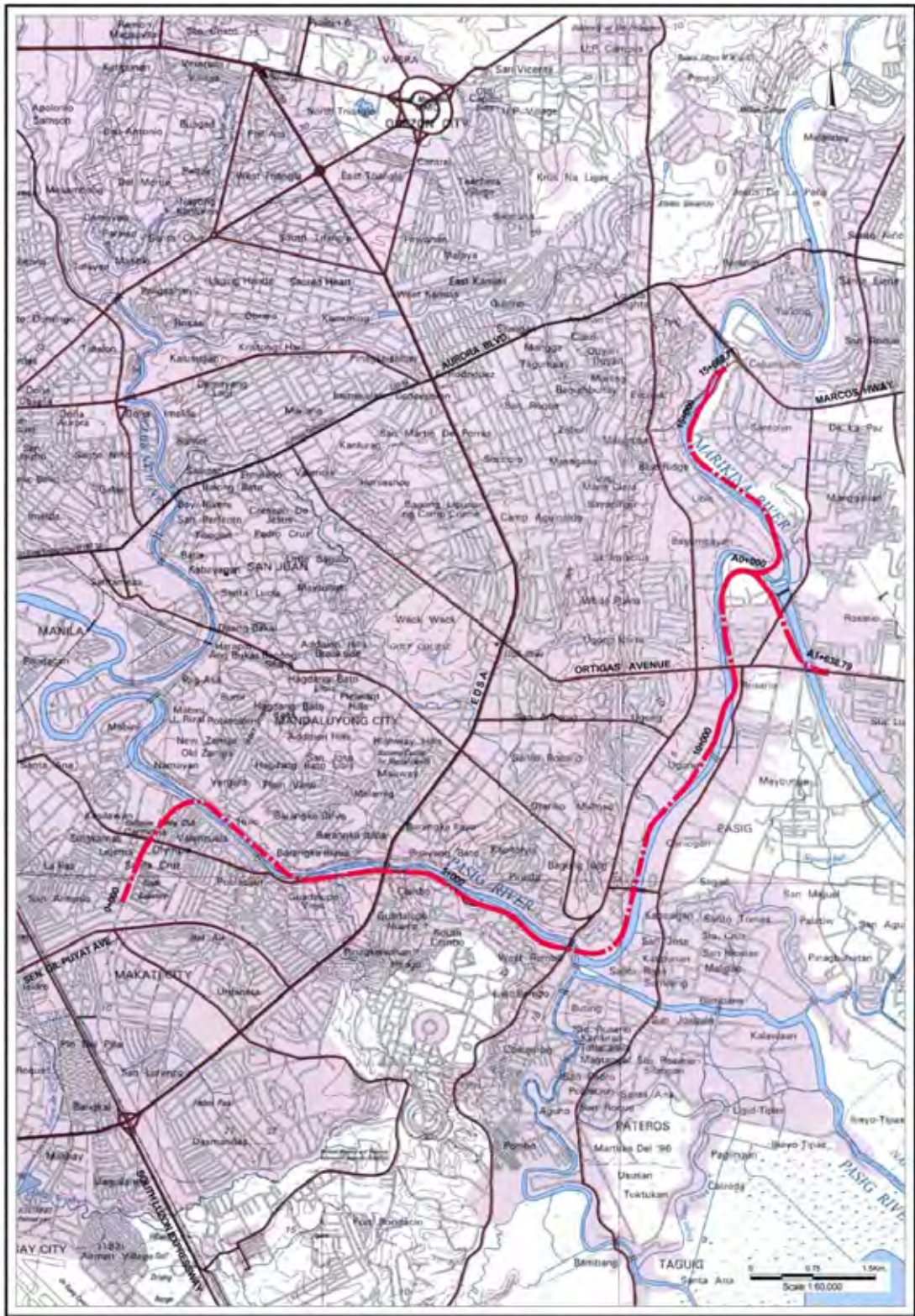
<i>Project Name</i>		C-5/FTI/Skyway Connector Road
<i>Objectives of the Project</i>		<ul style="list-style-type: none"> · To provide access to FTI area for redevelopment of FTI area. · To connect Skyway with C-5.
<i>Project Length</i>		3.0 km
<i>Type of Structure</i>		<ul style="list-style-type: none"> · Elevated structure
<i>Estimated Project Cost (Billion Pesos at 2010 Prices)</i>	<i>Construction Cost</i>	5.32
	<i>ROW Acquisition</i>	0.10
	<i>Engineering Cost</i>	0.16
	<i>Admin. Cost</i>	0.03
	Total	5.61
<i>O & M Cost (Billion Pesos at 2010 Prices)</i>	<i>Operation Cost per Year</i>	0.032
	<i>Routine Maintenance Cost per Year</i>	0.011
	Total	0.043
	<i>Periodic Maintenance Cost at Every 10 Years</i>	0.106
<i>Estimated Traffic Volume (PCU/day) (Assumed Opening Year: 2015)</i>		52,900
<i>EIRR (Assumed Opening Year: 2015)</i>		26.00%
<i>Priority Group</i>		First



C-5/FTI/Skyway Connector Road

PROJECT NO. 12

<i>Project Name</i>		Pasig-Marikina Expressway
<i>Objectives of the Project</i>		<ul style="list-style-type: none"> · To decongest Metro Manila traffic, especially C-4 and C-5 traffic. · To provide alternative access to Makati CBD.
<i>Project Length</i>		15.7 km.
<i>Type of Structure</i>		· Elevated structure
<i>Estimated Project Cost (Billion Pesos at 2010 Prices)</i>	<i>Construction Cost</i>	34.65
	<i>ROW Acquisition</i>	1.00
	<i>Engineering Cost</i>	2.77
	<i>Admin. Cost</i>	1.04
	Total	39.46
<i>O & M Cost (Billion Pesos at 2010 Prices)</i>	<i>Operation Cost per Year</i>	0.208
	<i>Routine Maintenance Cost per Year</i>	0.052
	Total	0.260
	<i>Periodic Maintenance Cost at Every 10 Years</i>	0.693
<i>Estimated Traffic Volume (PCU/day) (Assumed Opening Year: 2015)</i>		79,500
<i>EIRR (Assumed Opening Year: 2015)</i>		11.53%
<i>Priority Group</i>		Second



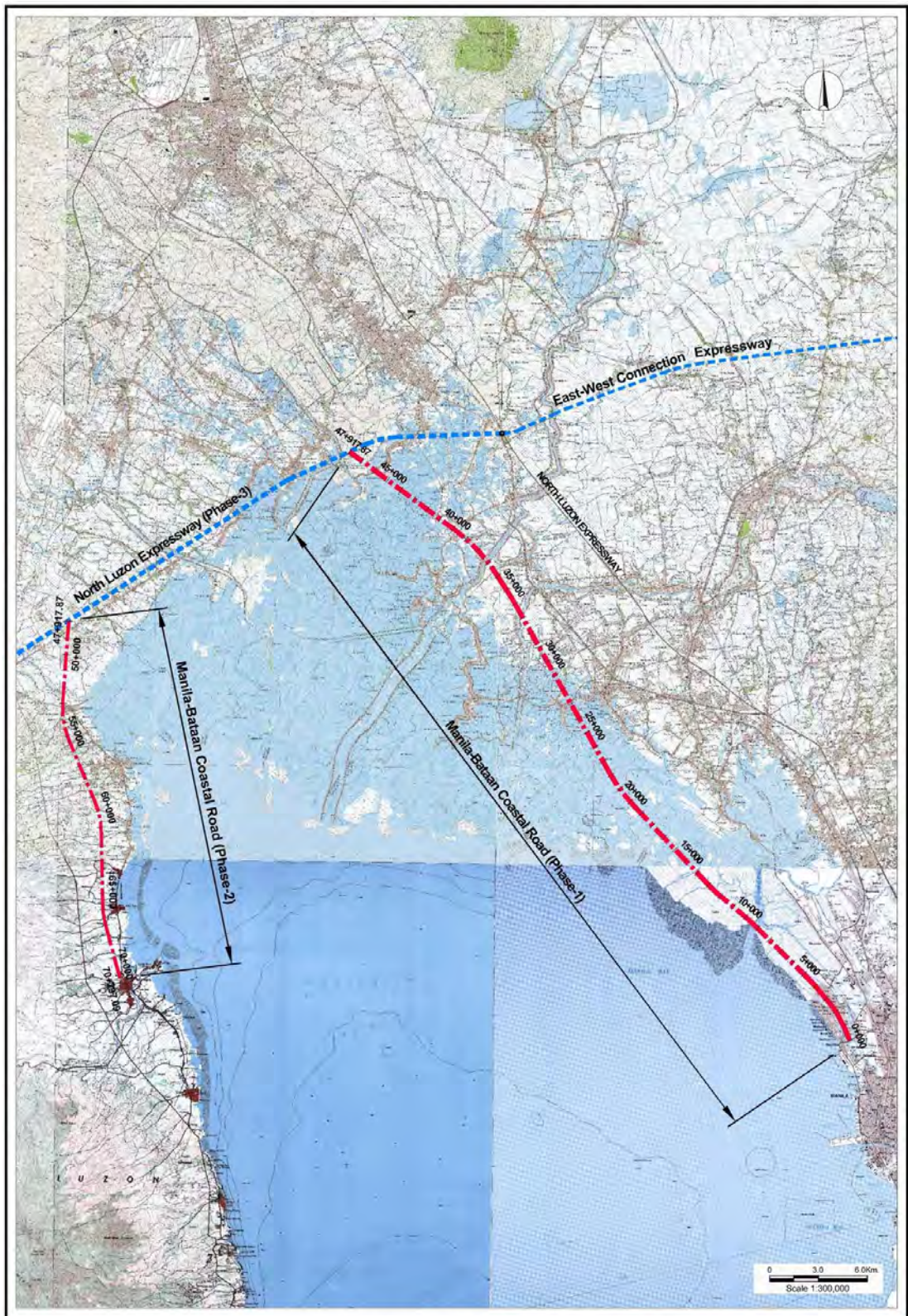
Pasig-Marikina Expressway

PROJECT NO. 13

<i>Project Name</i>		R-7 Expressway
<i>Objectives of the Project</i>		· To decongest Metro Manila traffic, particularly Quezon Avenue and Don Mariano Marcos Avenue.
<i>Project Length</i>		16.1 km.
<i>Type of Structure</i>		· Mostly elevated, underpass at Quezon Circle
<i>Estimated Project Cost (Billion Pesos at 2010 Prices)</i>	<i>Construction Cost</i>	23.98
	<i>ROW Acquisition</i>	1.00
	<i>Engineering Cost</i>	0.72
	<i>Admin. Cost</i>	0.12
	Total	25.82
<i>O & M Cost (Billion Pesos at 2010 Prices)</i>	<i>Operation Cost per Year</i>	0.192
	<i>Routine Maintenance Cost per Year</i>	0.096
	Total	0.288
	<i>Periodic Maintenance Cost at Every 10 Years</i>	0.480
<i>Estimated Traffic Volume (PCU/day) (Assumed Opening Year: 2015)</i>		83,400
<i>EIRR (Assumed Opening Year: 2015)</i>		23.41%
<i>Priority Group</i>		Second

PROJECT NO. 14

<i>Project Name</i>		Manila-Bataan Coastal Road
<i>Objectives of the Project</i>		<ul style="list-style-type: none"> · To provide alternative access to Metro Manila from Central/North Luzon. · To develop Manila Bay Coastal area.
<i>Project Length</i>		70.3 km
<i>Type of Structure</i>		· Cut/Fill and long bridges
<i>Estimated Project Cost (Billion Pesos at 2010 Prices)</i>	<i>Construction Cost</i>	82.50
	<i>ROW Acquisition</i>	0.37
	<i>Engineering Cost</i>	2.80
	<i>Admin. Cost</i>	0.58
	Total	86.25
<i>O & M Cost (Billion Pesos at 2010 Prices)</i>	<i>Operation Cost per Year</i>	0.803
	<i>Routine Maintenance Cost per Year</i>	0.402
	Total	1.205
	<i>Periodic Maintenance Cost at Every 10 Years</i>	2.930
<i>Estimated Traffic Volume (PCU/day) (Assumed Opening Year: 2015)</i>		18,400-42,400
<i>EIRR (Assumed Opening Year: 2015)</i>		17.90%
<i>Priority Group</i>		Second



Manila-Bataan Coastal Road

PROJECT NO. 15

<i>Project Name</i>		North Luzon Expressway (Phase 3)
<i>Objectives of the Project</i>		· To provide direct connection between Metro Manila and Subic.
<i>Project Length</i>		36.2 km
<i>Type of Structure</i>		· Cut/Fill and long bridges
<i>Estimated Project Cost (Billion Pesos at 2010 Prices)</i>	<i>Construction Cost</i>	24.34
	<i>ROW Acquisition</i>	0.29
	<i>Engineering Cost</i>	2.92
	<i>Admin. Cost</i>	0.85
	Total	28.40
<i>O & M Cost (Billion Pesos at 2010 Prices)</i>	<i>Operation Cost per Year</i>	0.365
	<i>Routine Maintenance Cost per Year</i>	0.170
	Total	0.535
	<i>Periodic Maintenance Cost at Every 10 Years</i>	2.434
<i>Estimated Traffic Volume (PCU/day) (Assumed Opening Year: 2015)</i>		28,800
<i>EIRR (Assumed Opening Year: 2015)</i>		18.83%
<i>Priority Group</i>		Second



North Luzon Expressway (Phase 3)

PROJECT NO. 16

<i>Project Name</i>		East-West Connection Expressway
<i>Objectives of the Project</i>		· To connect NLEX and NLEx-East to improve expressway network flexibility.
<i>Project Length</i>		26.6 km
<i>Type of Structure</i>		· Cut/Fill
<i>Estimated Project Cost (Billion Pesos at 2010 Prices)</i>	<i>Construction Cost</i>	7.93
	<i>ROW Acquisition</i>	0.21
	<i>Engineering Cost</i>	0.95
	<i>Admin. Cost</i>	0.28
	Total	9.37
<i>O & M Cost (Billion Pesos at 2010 Prices)</i>	<i>Operation Cost per Year</i>	0.238
	<i>Routine Maintenance Cost per Year</i>	0.119
	Total	0.357
	<i>Periodic Maintenance Cost at Every 10 Years</i>	0.793
<i>Estimated Traffic Volume (PCU/day) (Assumed Opening Year: 2015)</i>		4,100
<i>EIRR (Assumed Opening Year: 2015)</i>		8.04%
<i>Priority Group</i>		Second



East-West Connection Expressway

