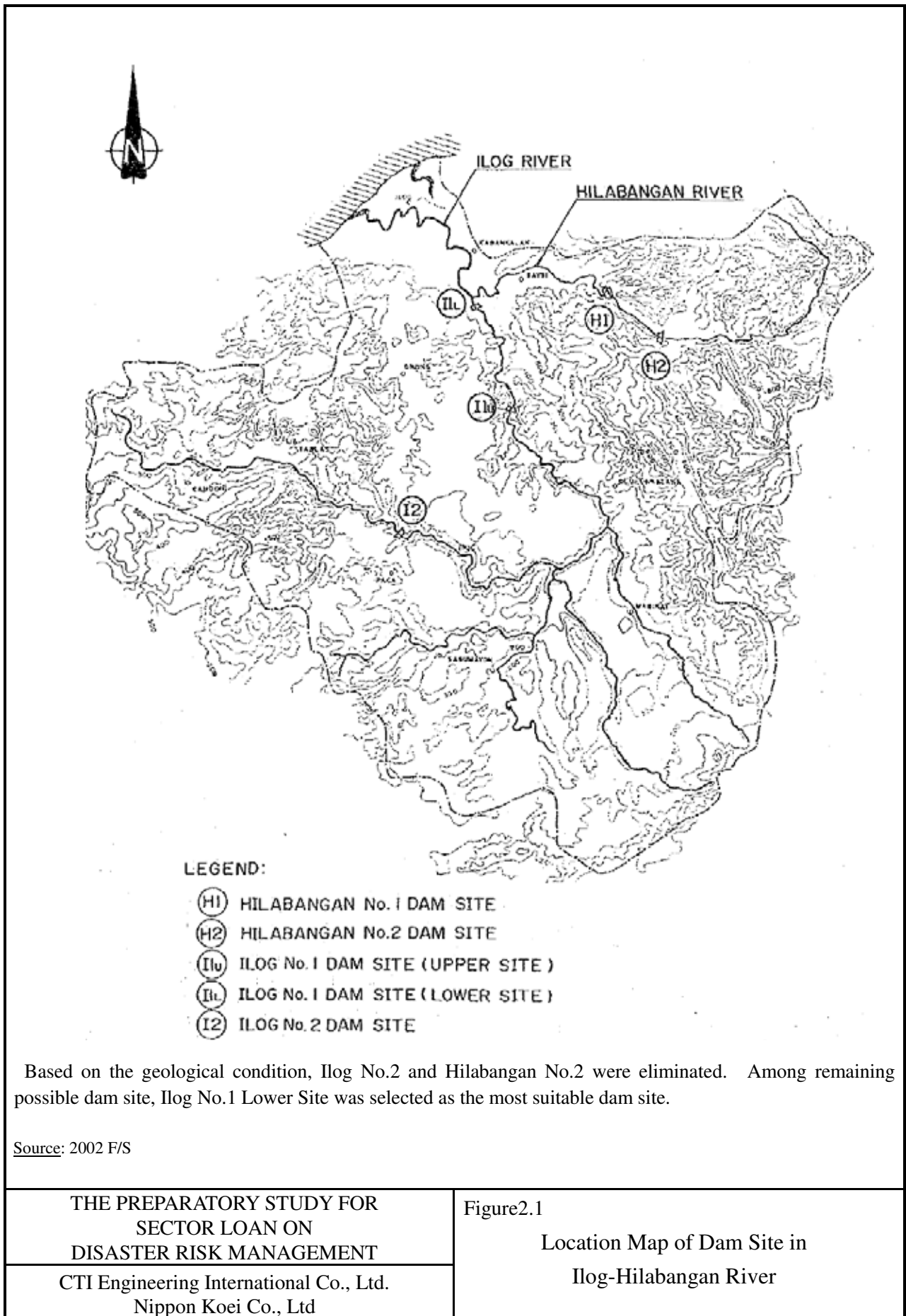
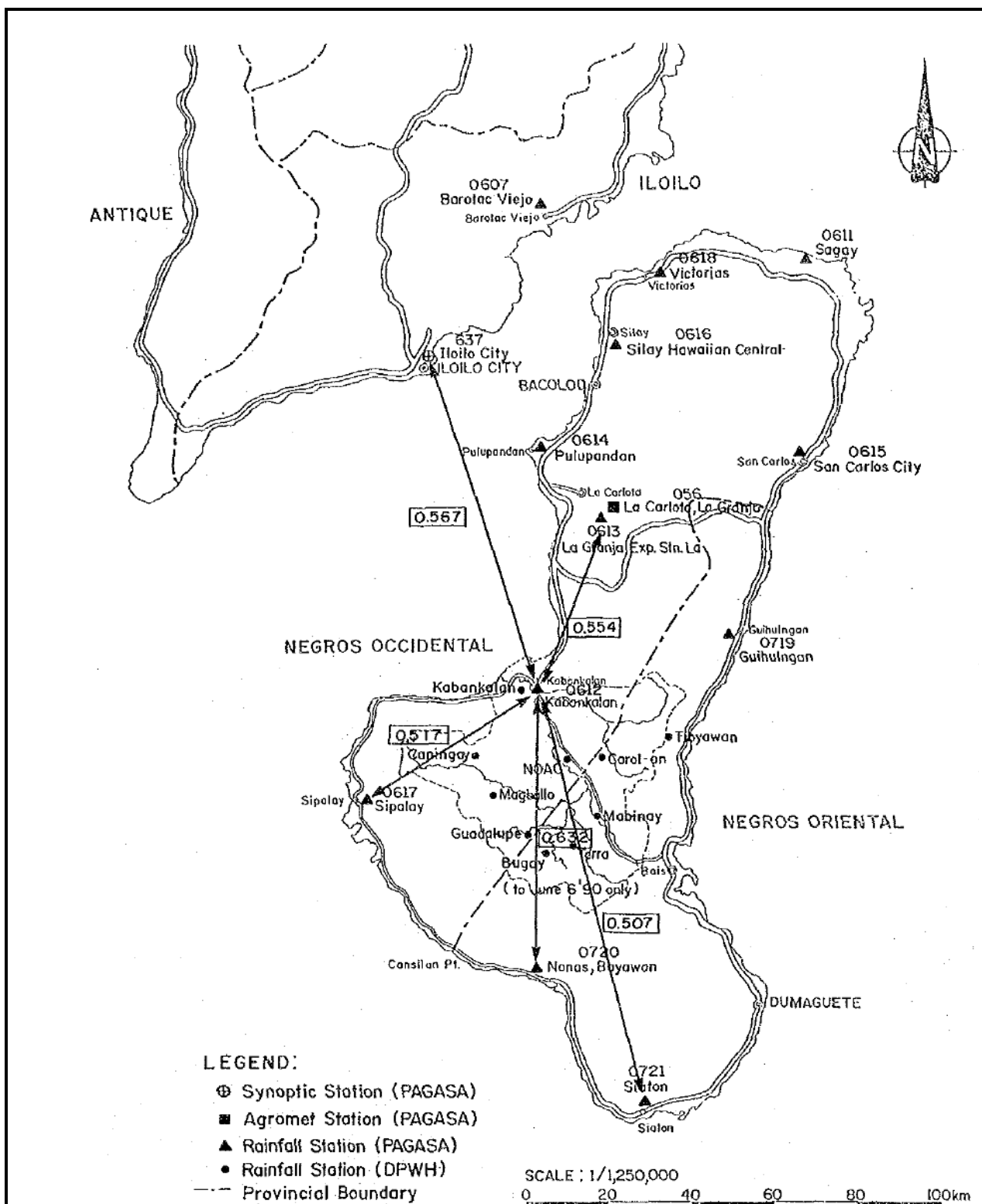


## ***FIGURES***

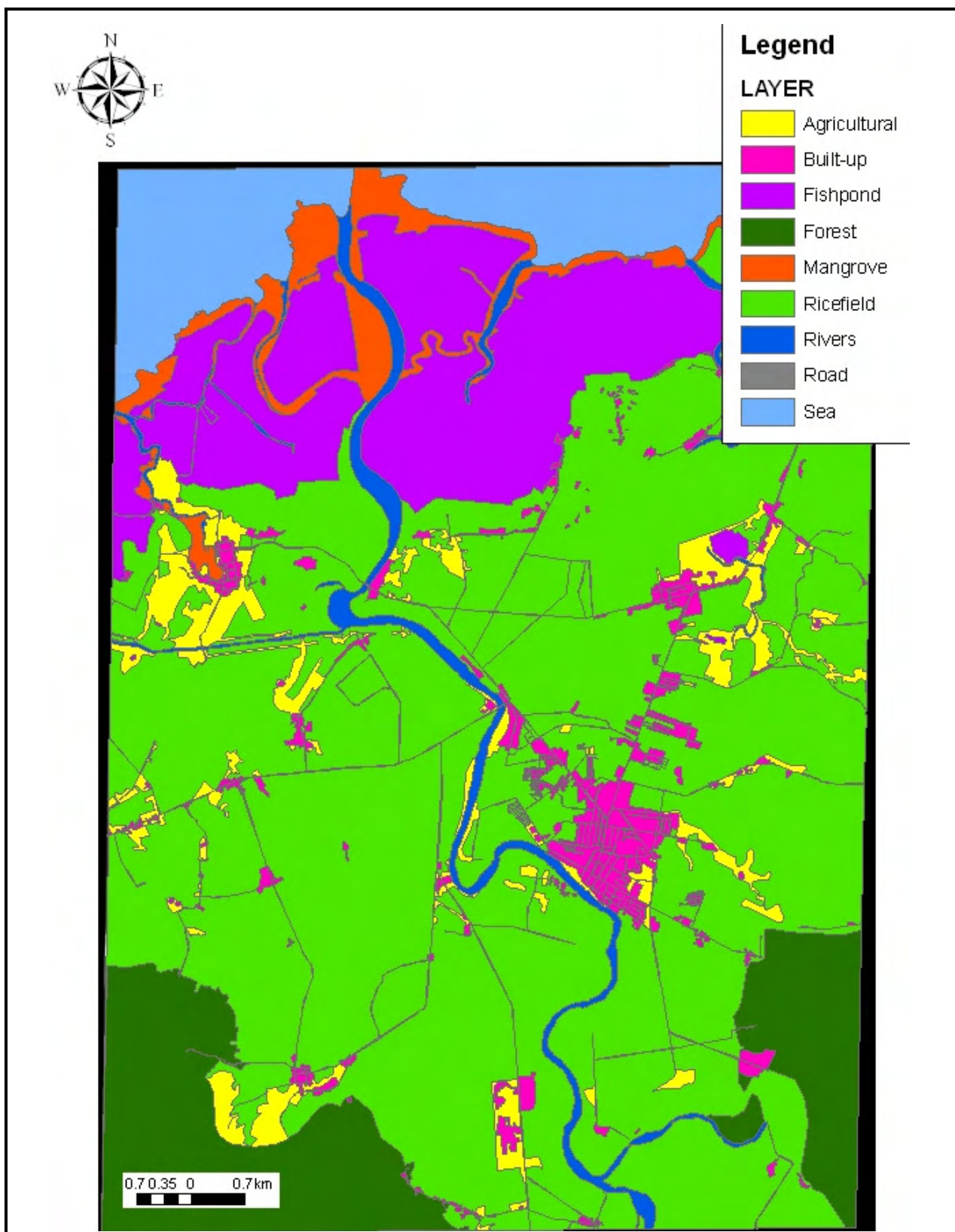






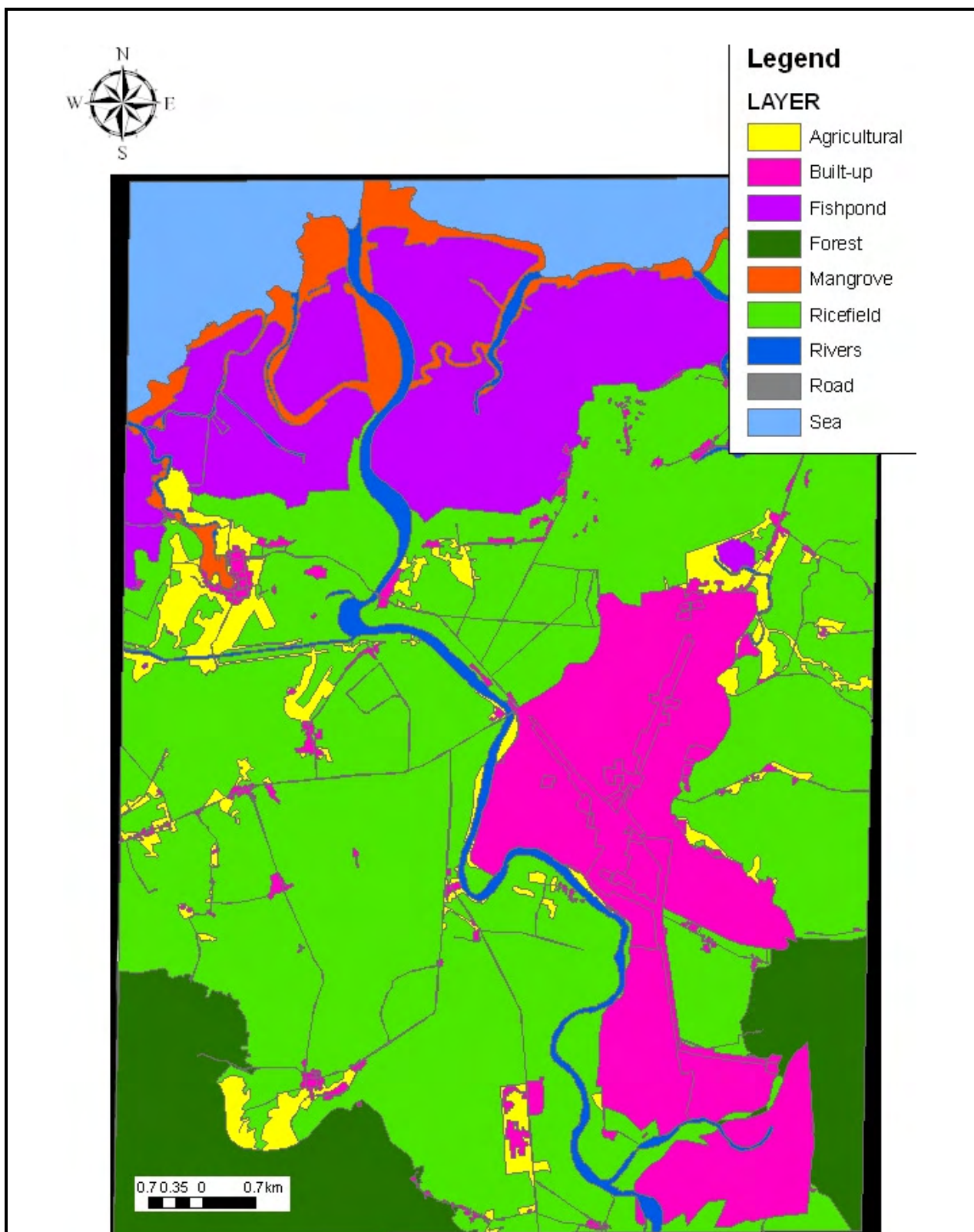
Source: 1990 M/P

<p>THE PREPARATORY STUDY FOR SECTOR LOAN ON DISASTER RISK MANAGEMENT</p>	<p>Figure 2.2 Monthly Rainfall Correlation Coefficient Between Kabankalan and Other Stations</p>
<p>CTI Engineering International Co., Ltd. Nippon Koei Co., Ltd</p>	



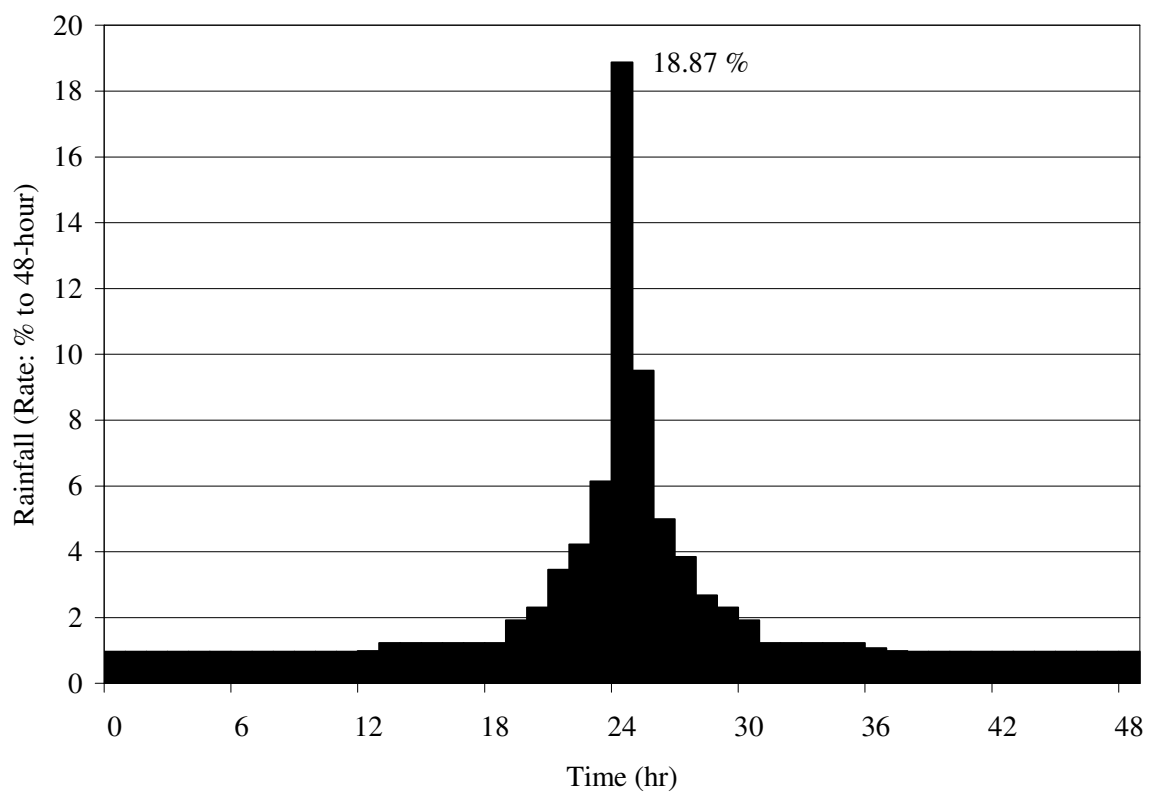
Source: Satellite Image by Quickbird 2008

<p>THE PREPARATORY STUDY FOR SECTOR LOAN ON DISASTER RISK MANAGEMENT</p>	<p>Figure 3.1</p>
<p>CTI Engineering International Co., Ltd. Nippon Koei Co., Ltd</p>	<p>Present Land Use Map in/around Kabankalan</p>



Source: CLUP and Satellite Image by Quickbird 2008

<p>THE PREPARATORY STUDY FOR SECTOR LOAN ON DISASTER RISK MANAGEMENT</p>	<p>Figure 4.1</p>
<p>CTI Engineering International Co., Ltd. Nippon Koei Co., Ltd</p>	<p>Future Land Use Condition in/around Kabankalan</p>



Hourly Rate to 48-hour Rainfall

Time Hour	Rate %	Time Hour	Rate %	Time Hour	Rate %
1	0.97	17	1.23	33	1.23
2	0.97	18	1.23	34	1.23
3	0.97	19	1.92	35	1.23
4	0.97	20	2.3	36	1.07
5	0.97	21	3.45	37	0.98
6	0.97	22	4.22	38	0.97
7	0.97	23	6.14	39	0.97
8	0.97	24	18.87	40	0.97
9	0.97	25	9.51	41	0.97
10	0.97	26	4.99	42	0.97
11	0.97	27	3.84	43	0.97
12	0.98	28	2.68	44	0.97
13	1.23	29	2.3	45	0.97
14	1.23	30	1.92	46	0.97
15	1.23	31	1.23	47	0.97
16	1.23	32	1.23	48	0.97

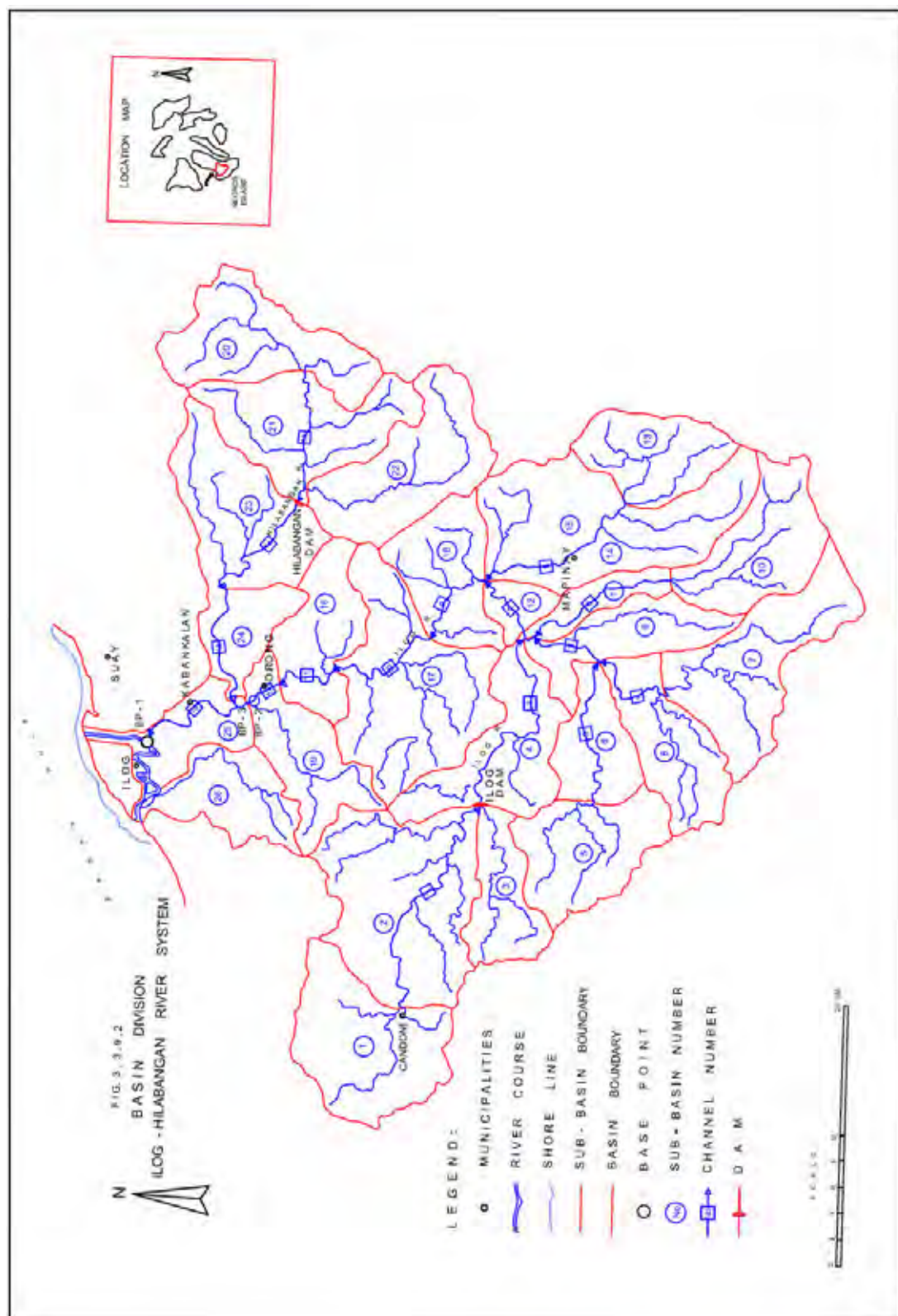
THE PREPARATORY STUDY FOR  
SECTOR LOAN ON  
DISASTER RISK MANAGEMENT

CTI Engineering International Co., Ltd.  
Nippon Koei Co., Ltd

Figure 5.1

Model Hyetograph  
of Ilog-Hilabangan River Basin





THE PREPARATORY STUDY FOR  
SECTOR LOAN ON  
DISASTER RISK MANAGEMENT



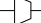
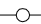

CTI Engineering International Co., Ltd.  
Nippon Koei Co., Ltd

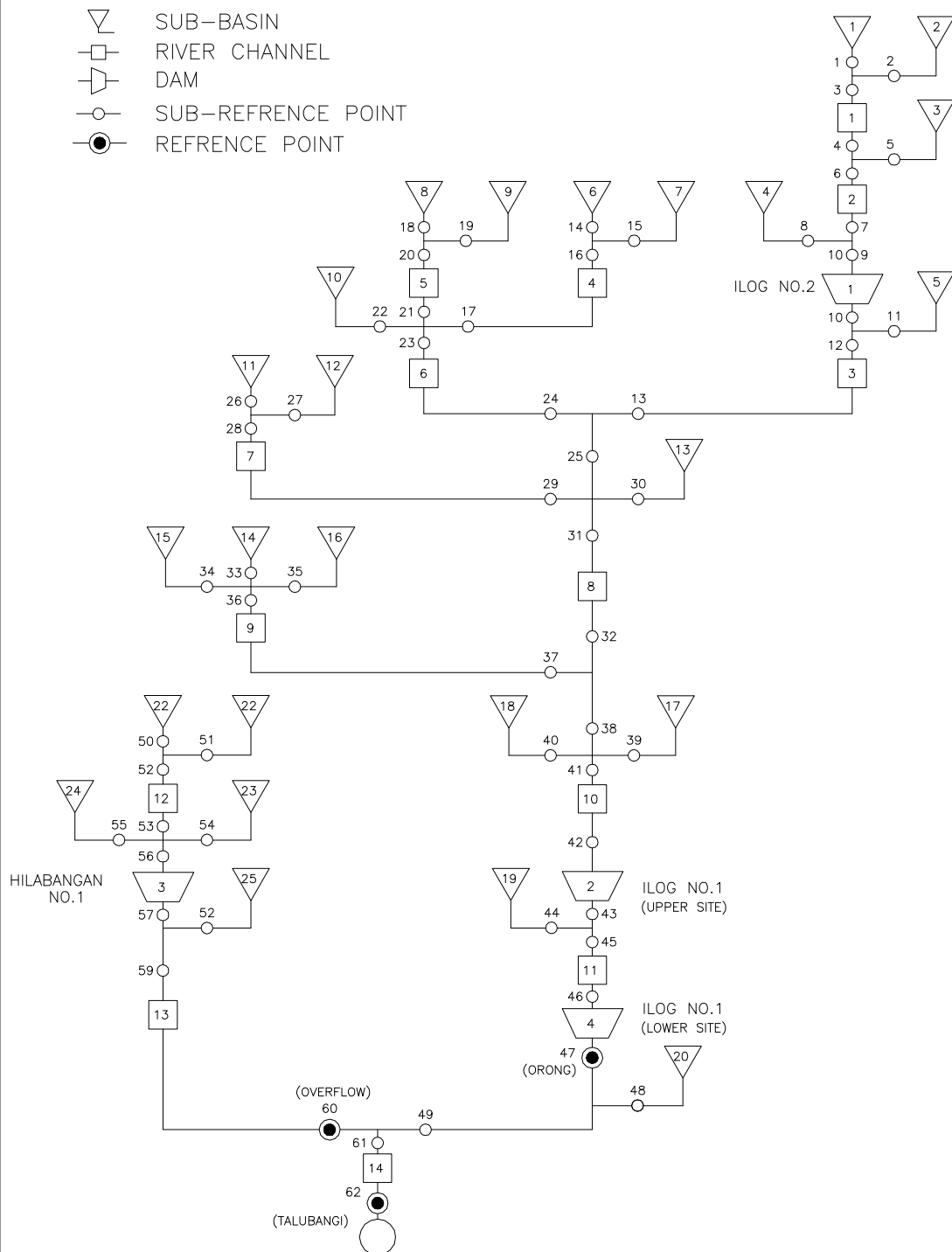
Figure 5.2

Catchment Delineation of  
Ilog-Hilabangan River Basin



LEGEND:

-  SUB-BASIN
-  RIVER CHANNEL
-  DAM
-  SUB-REFERENCE POINT
-  REFERENCE POINT

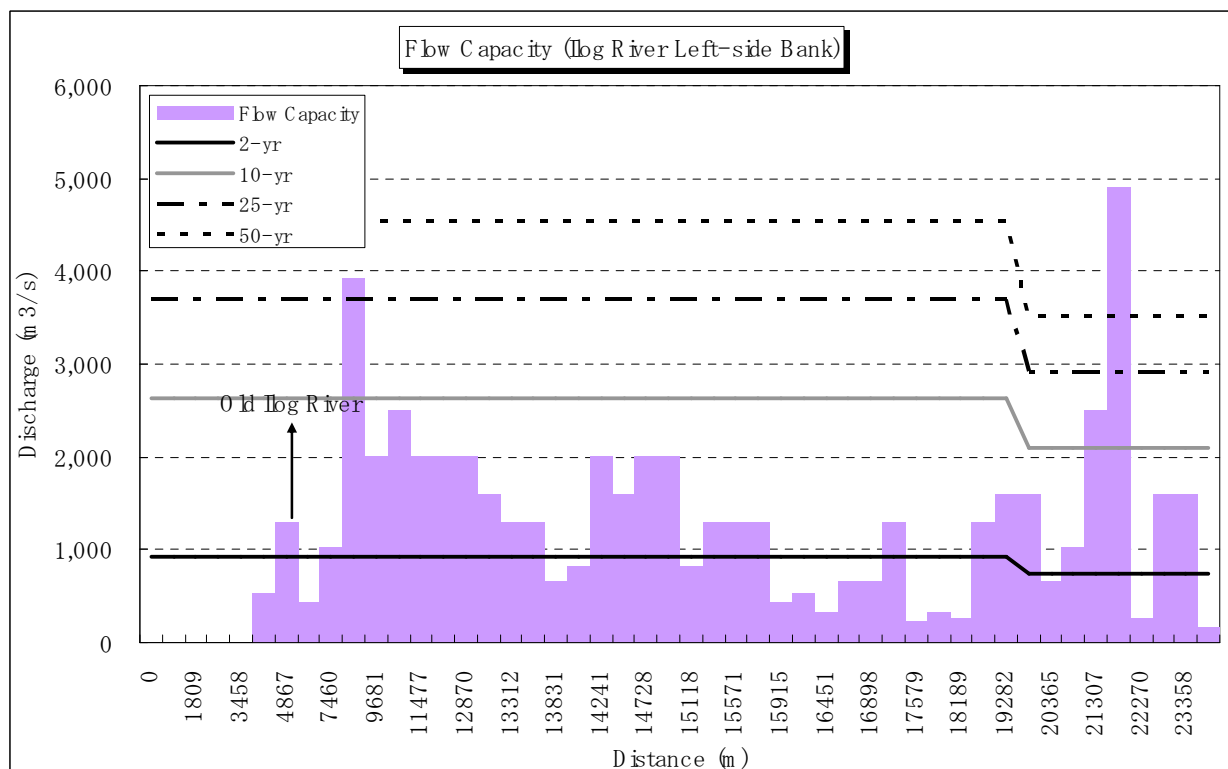
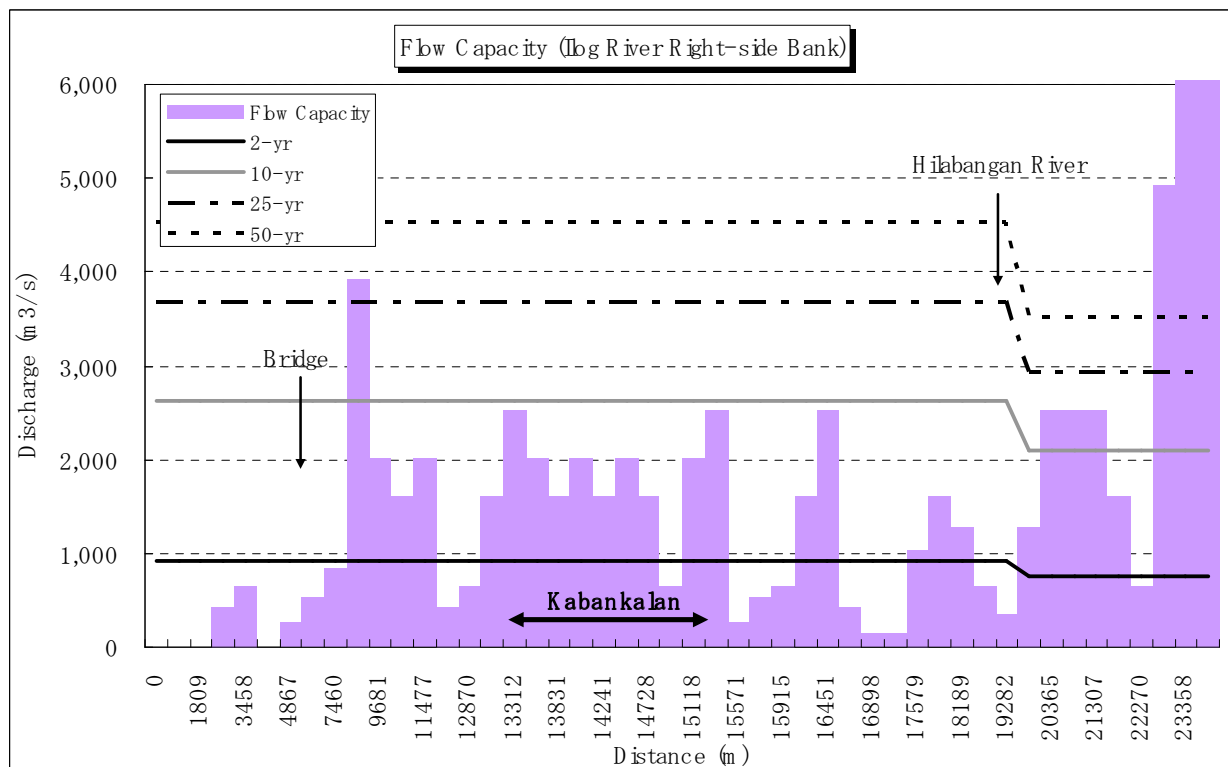


THE PREPARATORY STUDY FOR  
SECTOR LOAN ON  
DISASTER RISK MANAGEMENT

CTI Engineering International Co., Ltd.  
Nippon Koei Co., Ltd

Figure 5.3

River System Model for Flood Runoff Analysis  
of Ilog-Hilabangan River Basin

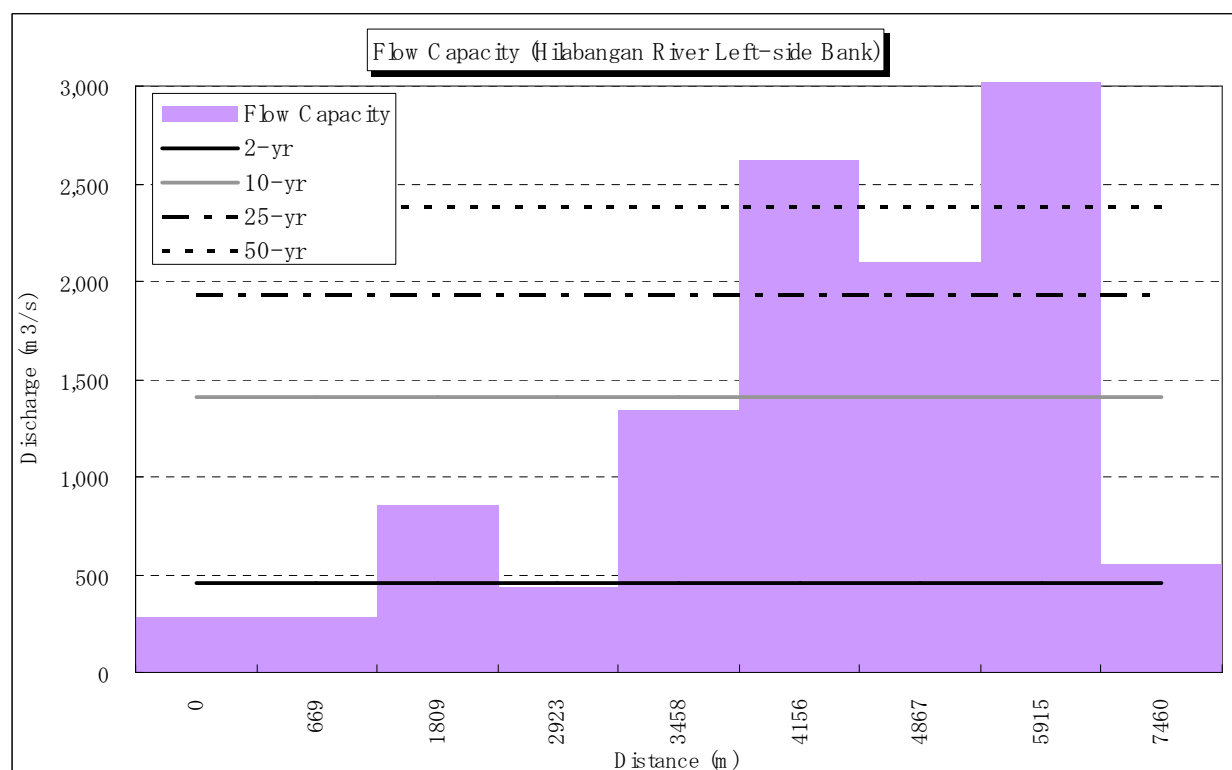
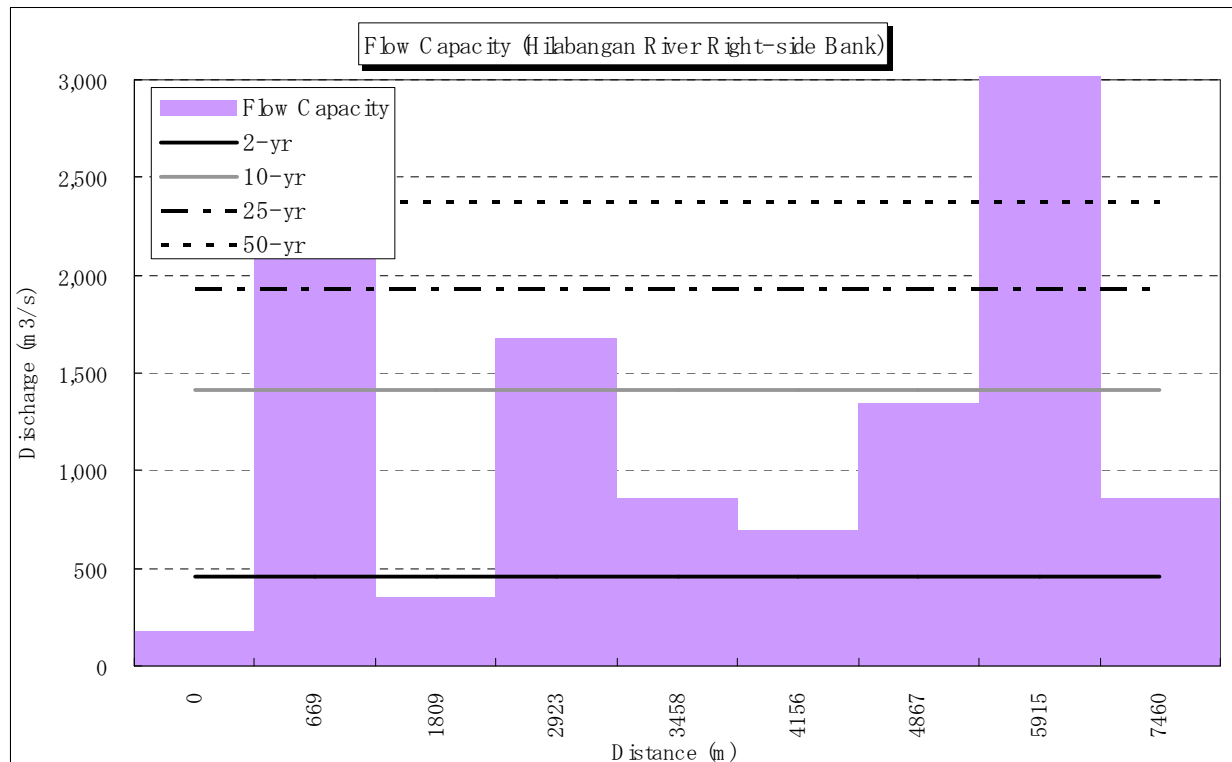


THE PREPARATORY STUDY FOR  
SECTOR LOAN ON  
DISASTER RISK MANAGEMENT

CTI Engineering International Co., Ltd.  
Nippon Koei Co., Ltd

Figure 5.4(1/2)

Flow Capacity  
(Ilog River)

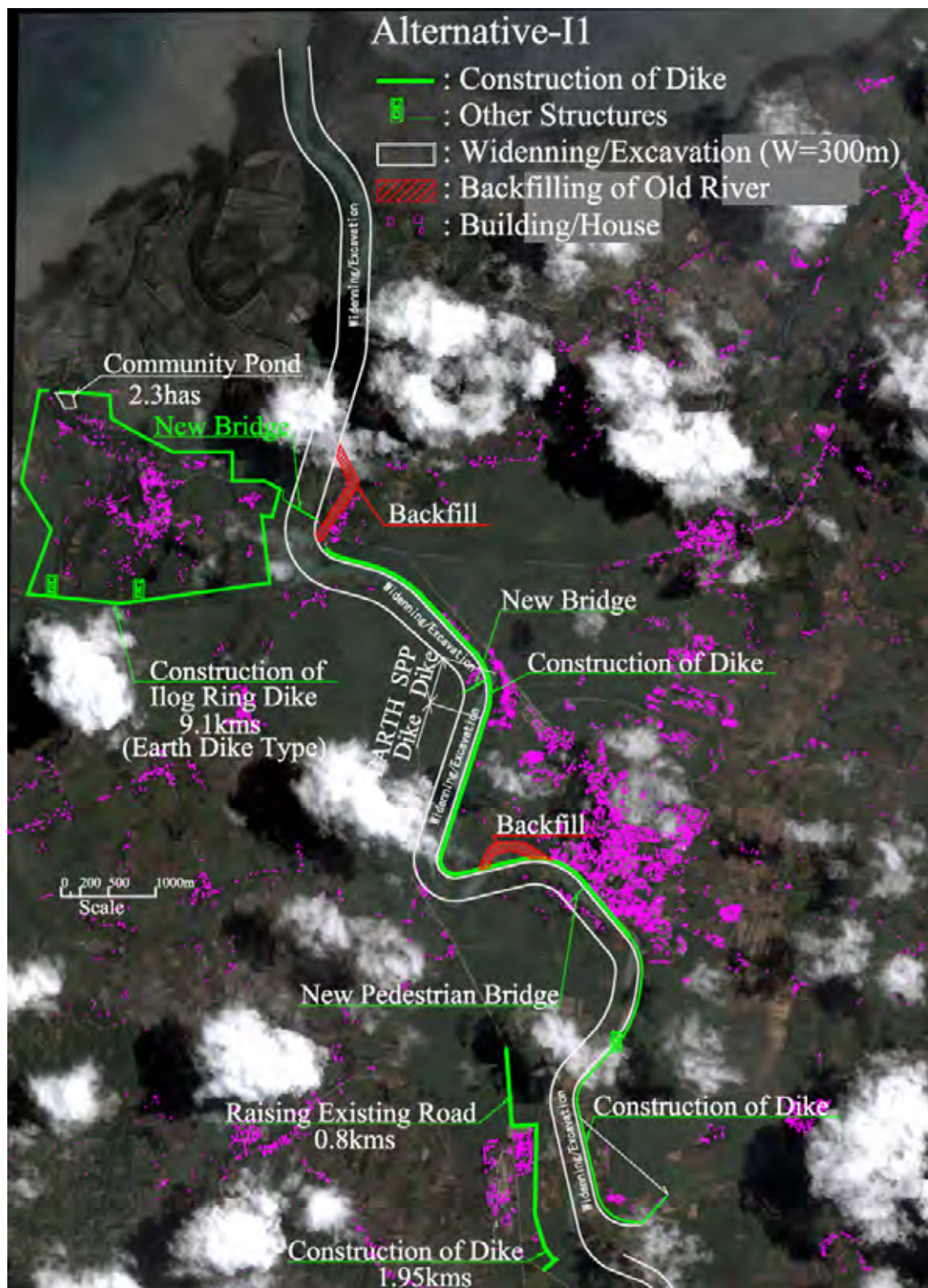


THE PREPARATORY STUDY FOR  
SECTOR LOAN ON  
DISASTER RISK MANAGEMENT

CTI Engineering International Co., Ltd.  
Nippon Koei Co., Ltd

Figure 5.4(2/2)

Flow Capacity  
(Hilabangan River)



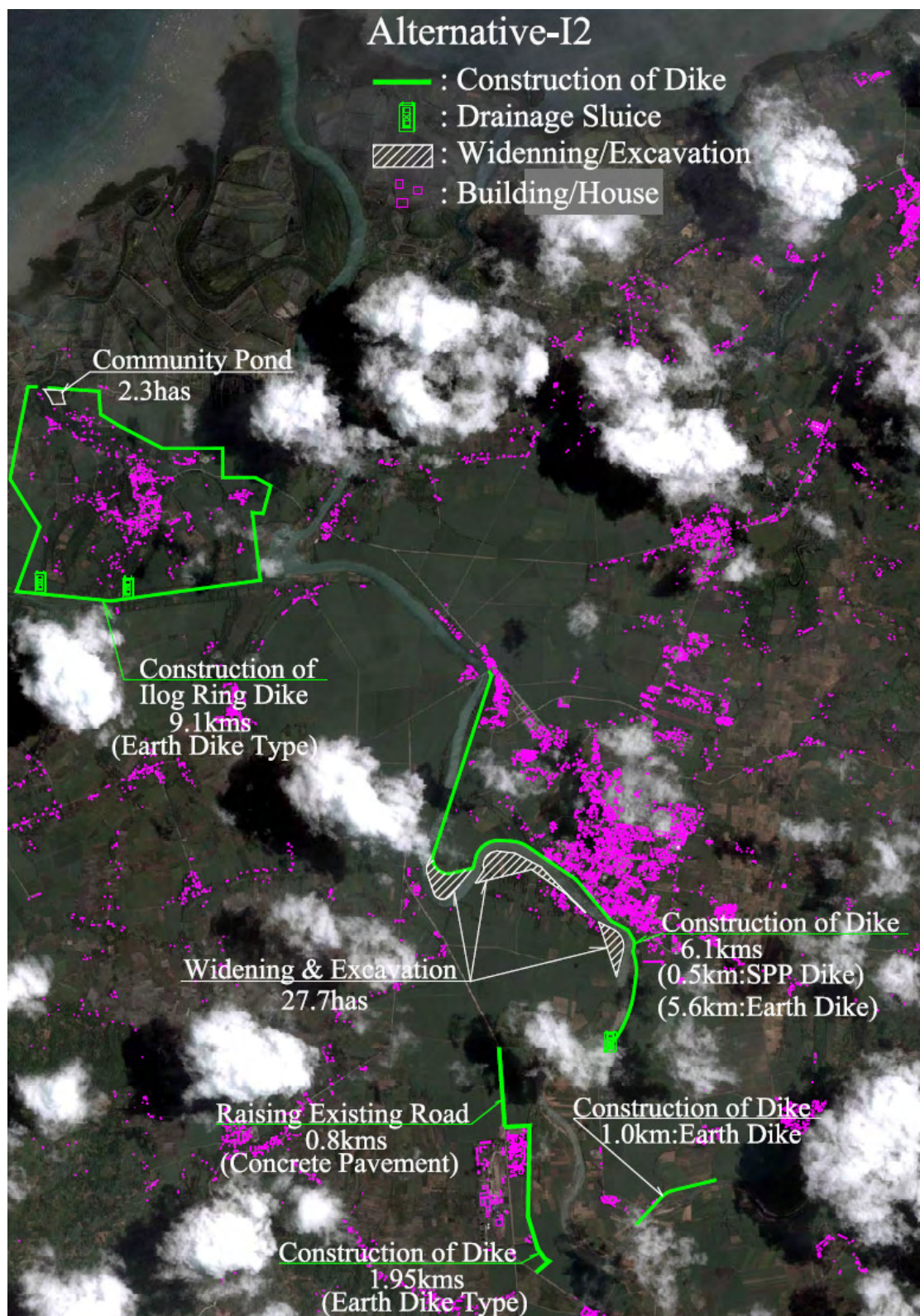
THE PREPARATORY STUDY FOR  
SECTOR LOAN FOR  
DISASTER RISK MANAGEMENT

CTI Engineering International Co., Ltd.  
Nippon Koei Co., Ltd

Figure 7.1

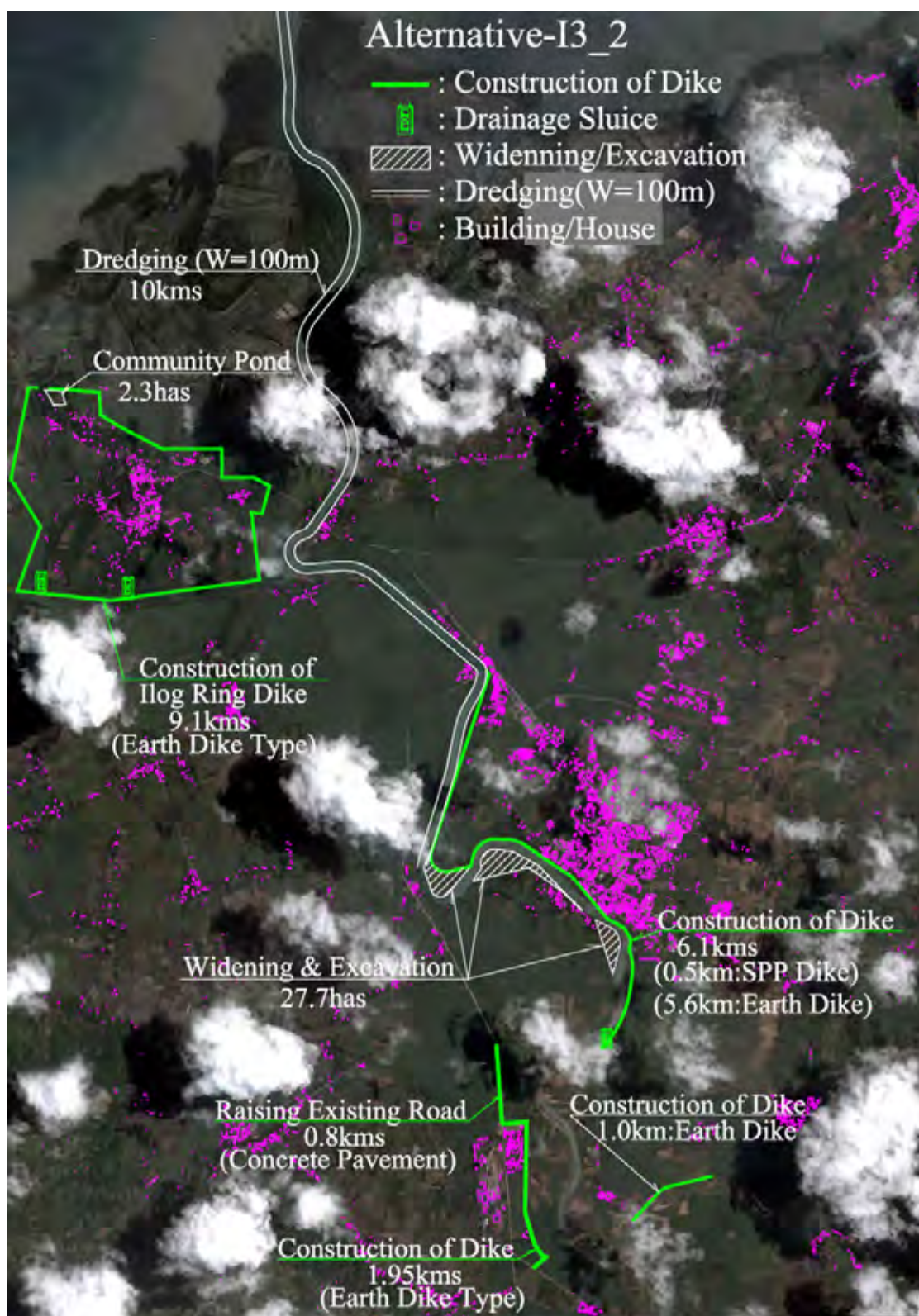
Ilog-Hilabangan River Improvement Plan  
(Alternative I-1: Full Improvement)





<p style="text-align: center;">THE PREPARATORY STUDY FOR SECTOR LOAN FOR DISASTER RISK MANAGEMENT</p>	<p>Figure 7.2</p> <p style="text-align: center;">Ilog-Hilabangan River Improvement Plan (Alternative I-2: Construction of Dike)</p>
<p style="text-align: center;">CTI Engineering International Co., Ltd. Nippon Koei Co., Ltd</p>	





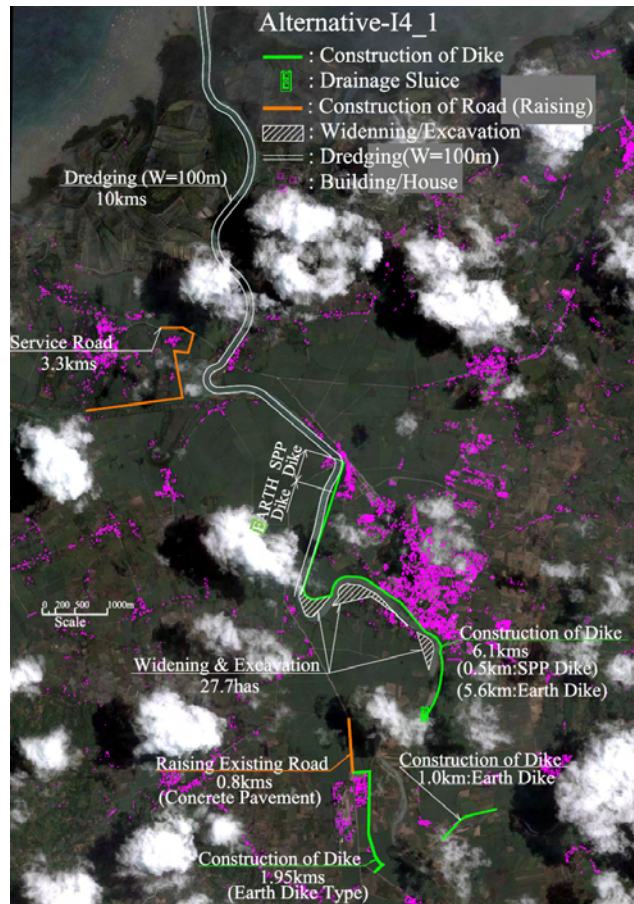
THE PREPARATORY STUDY FOR  
SECTOR LOAN FOR  
DISASTER RISK MANAGEMENT

CTI Engineering International Co., Ltd.  
Nippon Koei Co., Ltd

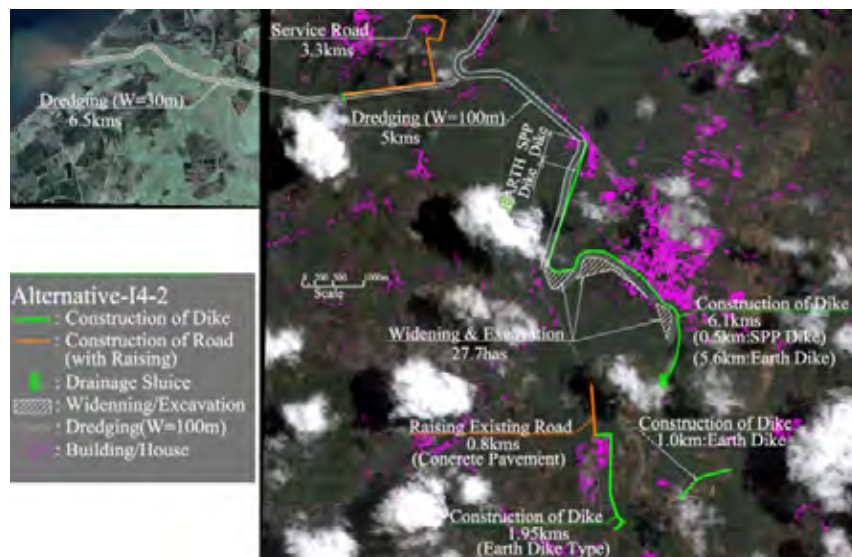
Figure 7.3

Ilog-Hilabangan River Improvement Plan  
(Alternative I-3: Dike and Dredging)





Alternative I-4\_1



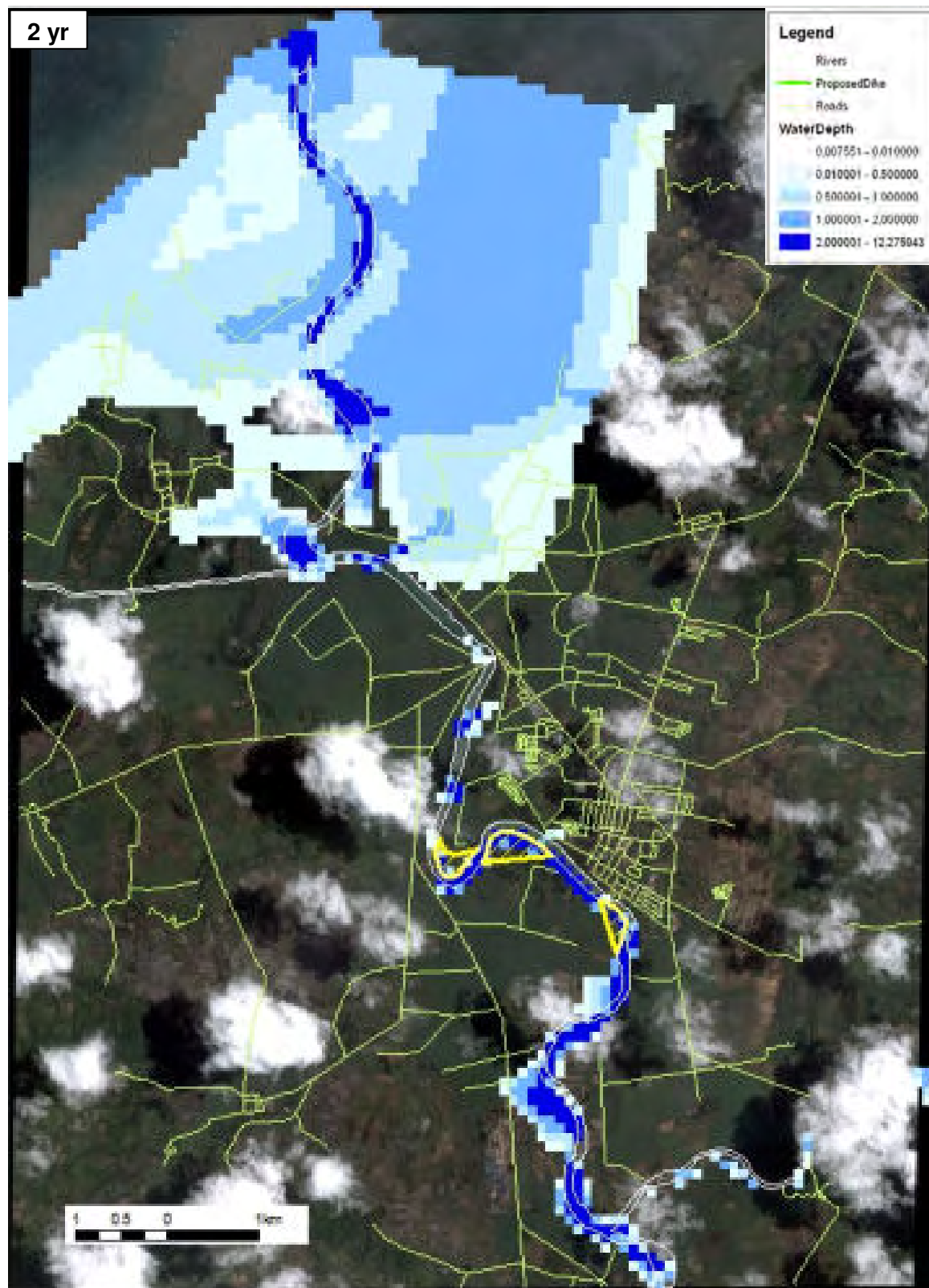
Alternative I-4\_2

THE PREPARATORY STUDY FOR  
SECTOR LOAN FOR  
DISASTER RISK MANAGEMENT

CTI Engineering International Co., Ltd.  
Nippon Koei Co., Ltd

Figure 7.4

Ilog-Hilabangan River Improvement Plan  
(Alternative I-4: Dike and Dredging:  
Partial Protection)

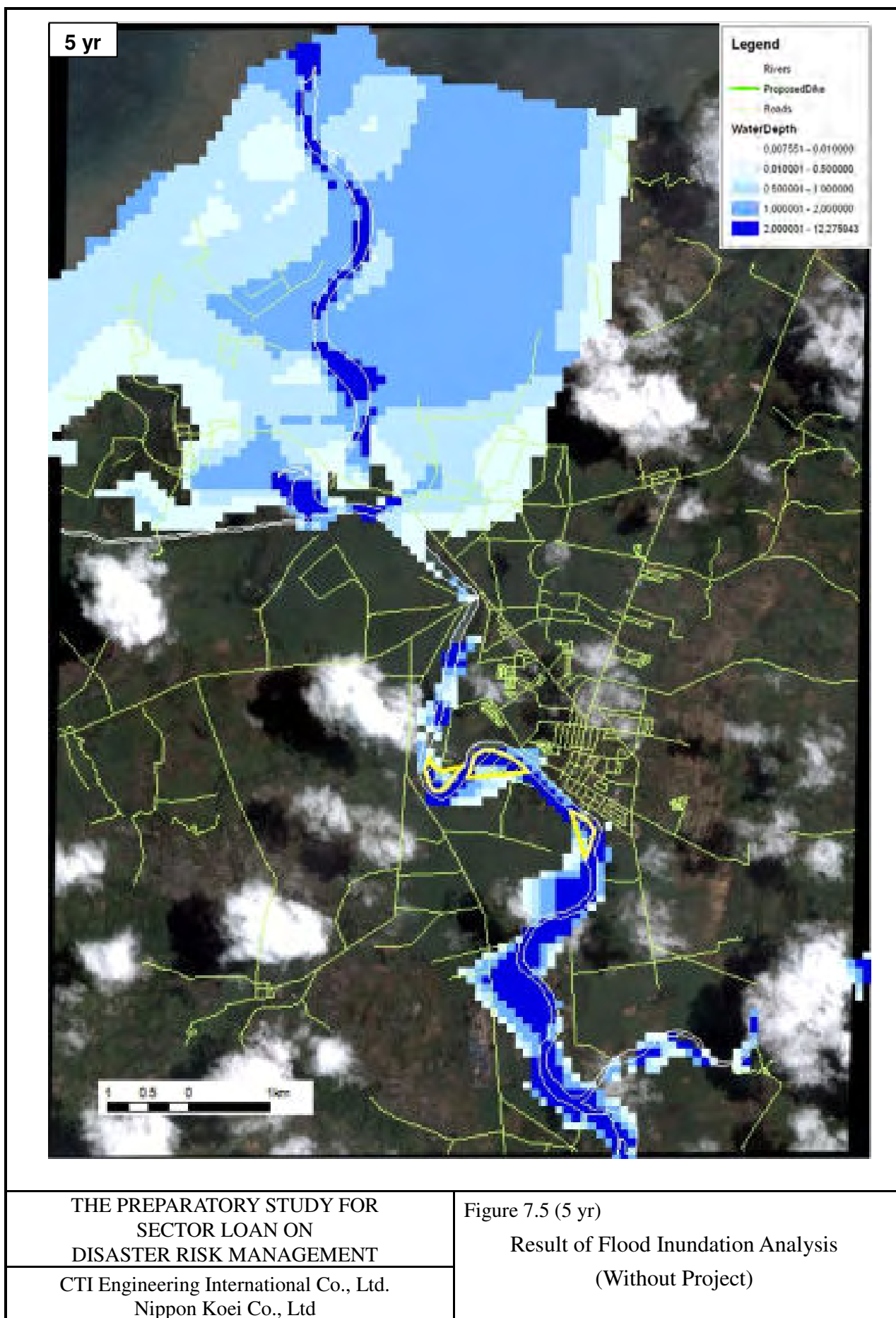


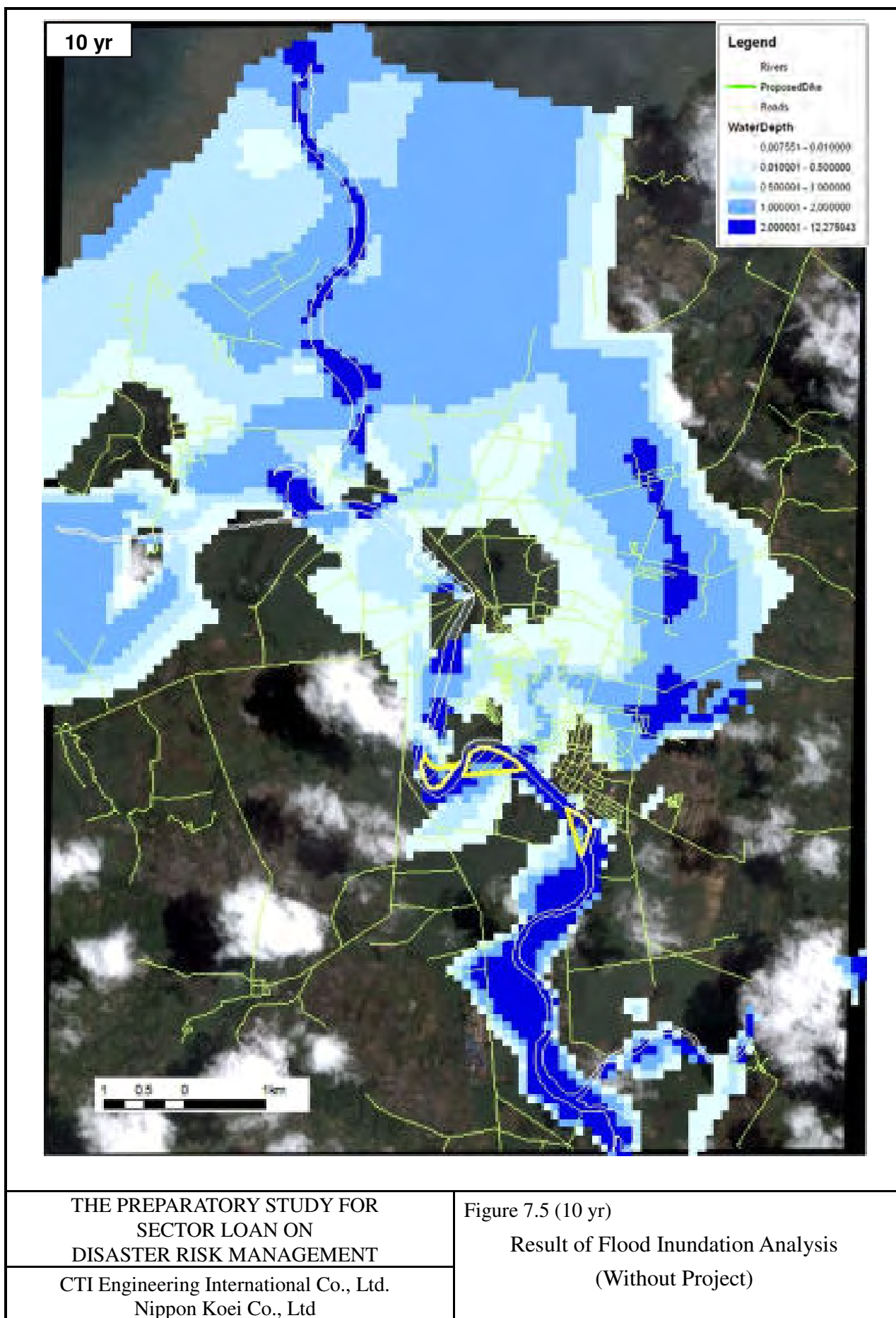
THE PREPARATORY STUDY FOR  
SECTOR LOAN ON  
DISASTER RISK MANAGEMENT

CTI Engineering International Co., Ltd.  
Nippon Koei Co., Ltd

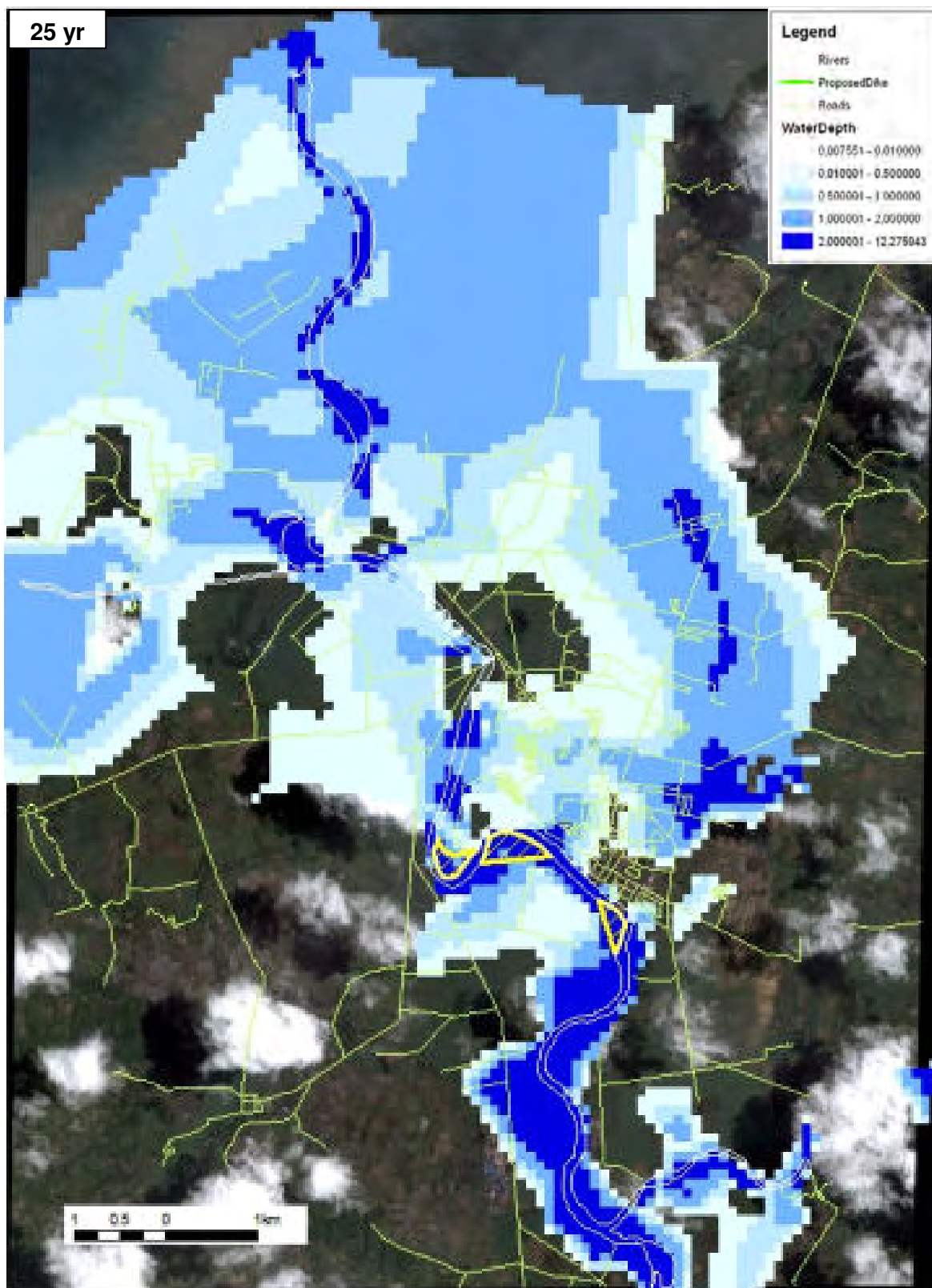
Figure 7.5 (1/6)

Result of Flood Inundation Analysis  
(Without Project)







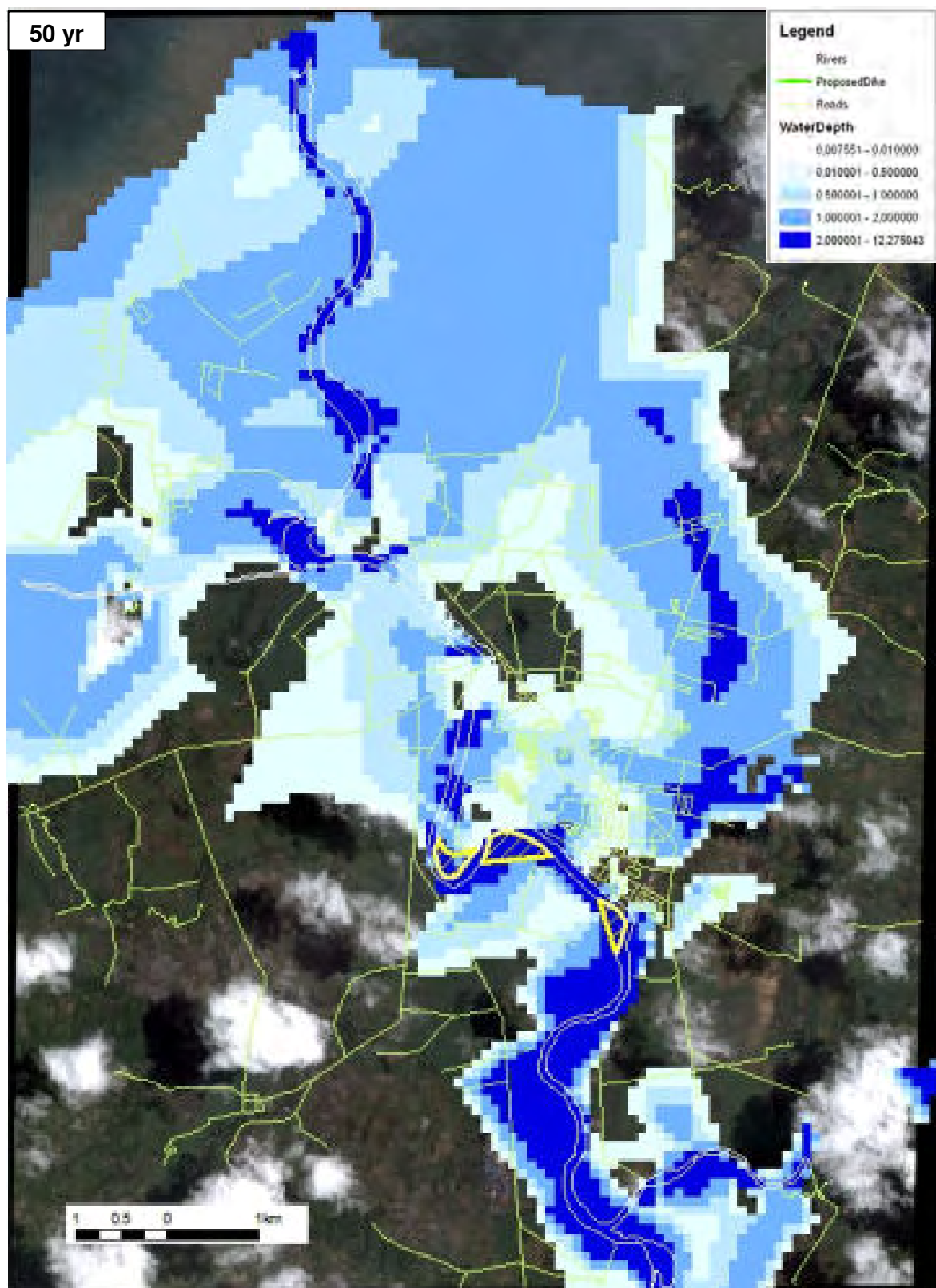


THE PREPARATORY STUDY FOR  
SECTOR LOAN ON  
DISASTER RISK MANAGEMENT

CTI Engineering International Co., Ltd.  
Nippon Koei Co., Ltd

Figure 7.5 (25 yr)

Result of Flood Inundation Analysis  
(Without Project)



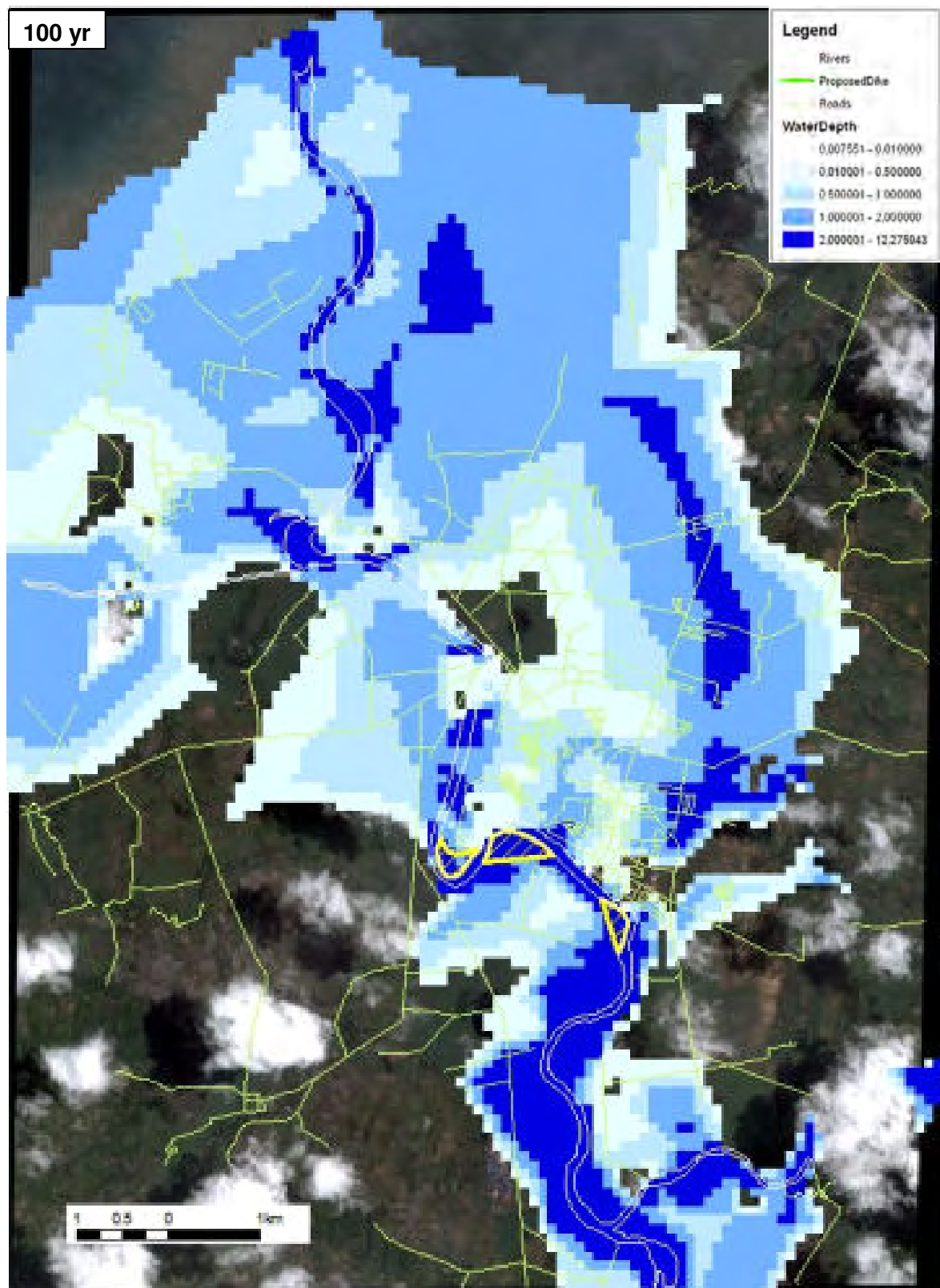
THE PREPARATORY STUDY FOR  
SECTOR LOAN ON  
DISASTER RISK MANAGEMENT

CTI Engineering International Co., Ltd.  
Nippon Koei Co., Ltd

Figure 7.5 (50 yr)

Result of Flood Inundation Analysis  
(Without Project)



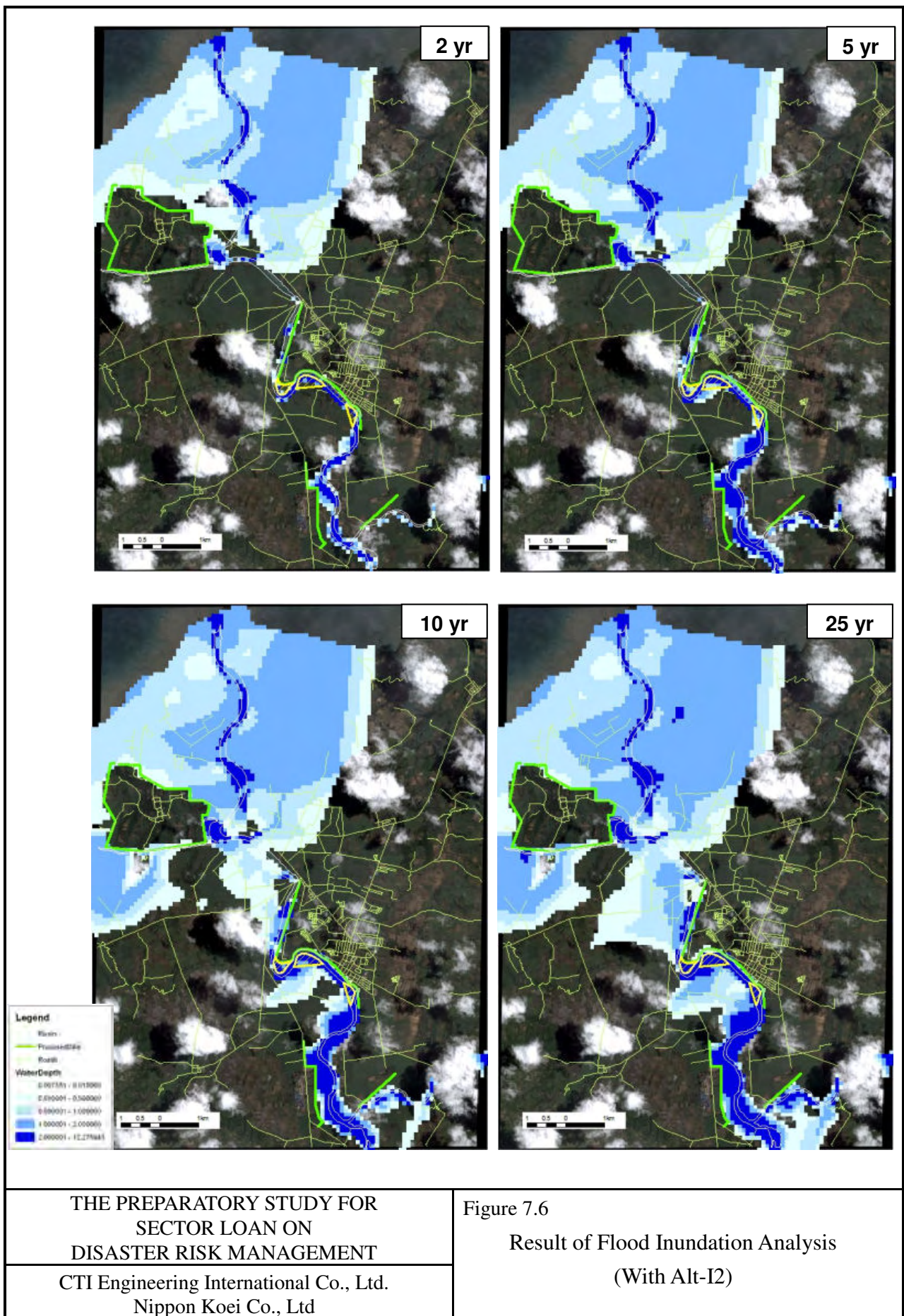


THE PREPARATORY STUDY FOR  
SECTOR LOAN ON  
DISASTER RISK MANAGEMENT

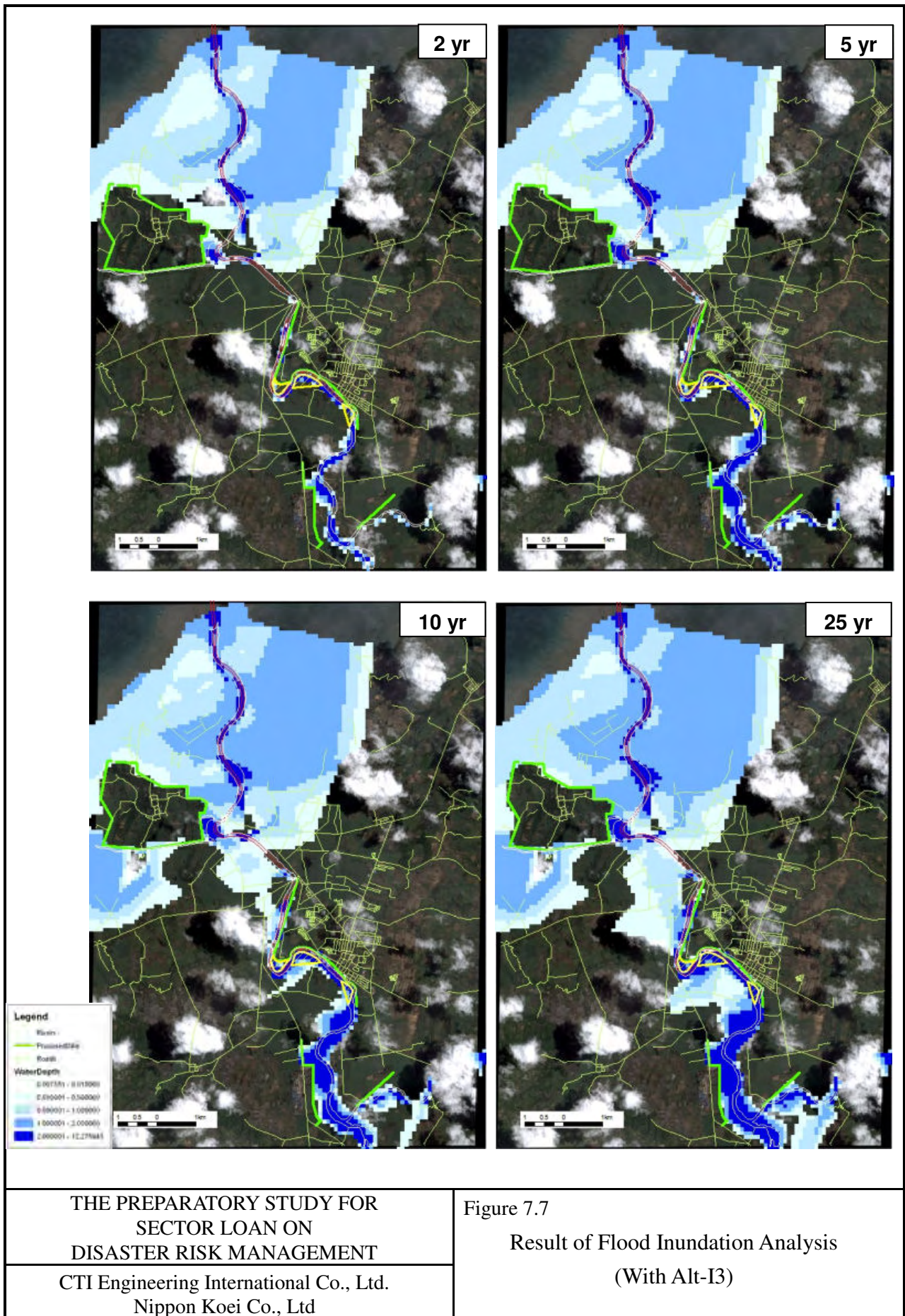
CTI Engineering International Co., Ltd.  
Nippon Koei Co., Ltd

Figure 7.5 (100 yr)

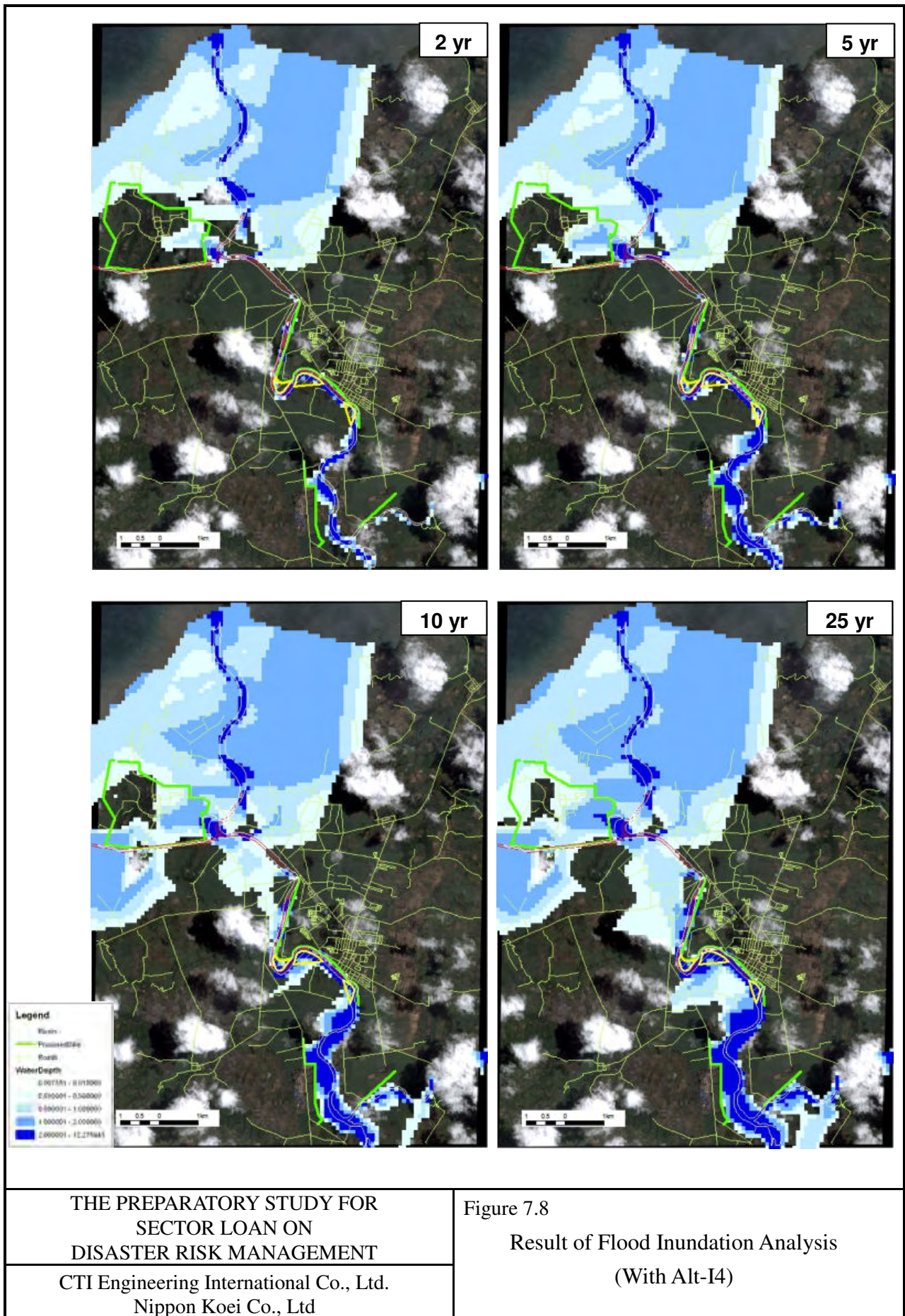
Result of Flood Inundation Analysis  
(Without Project)

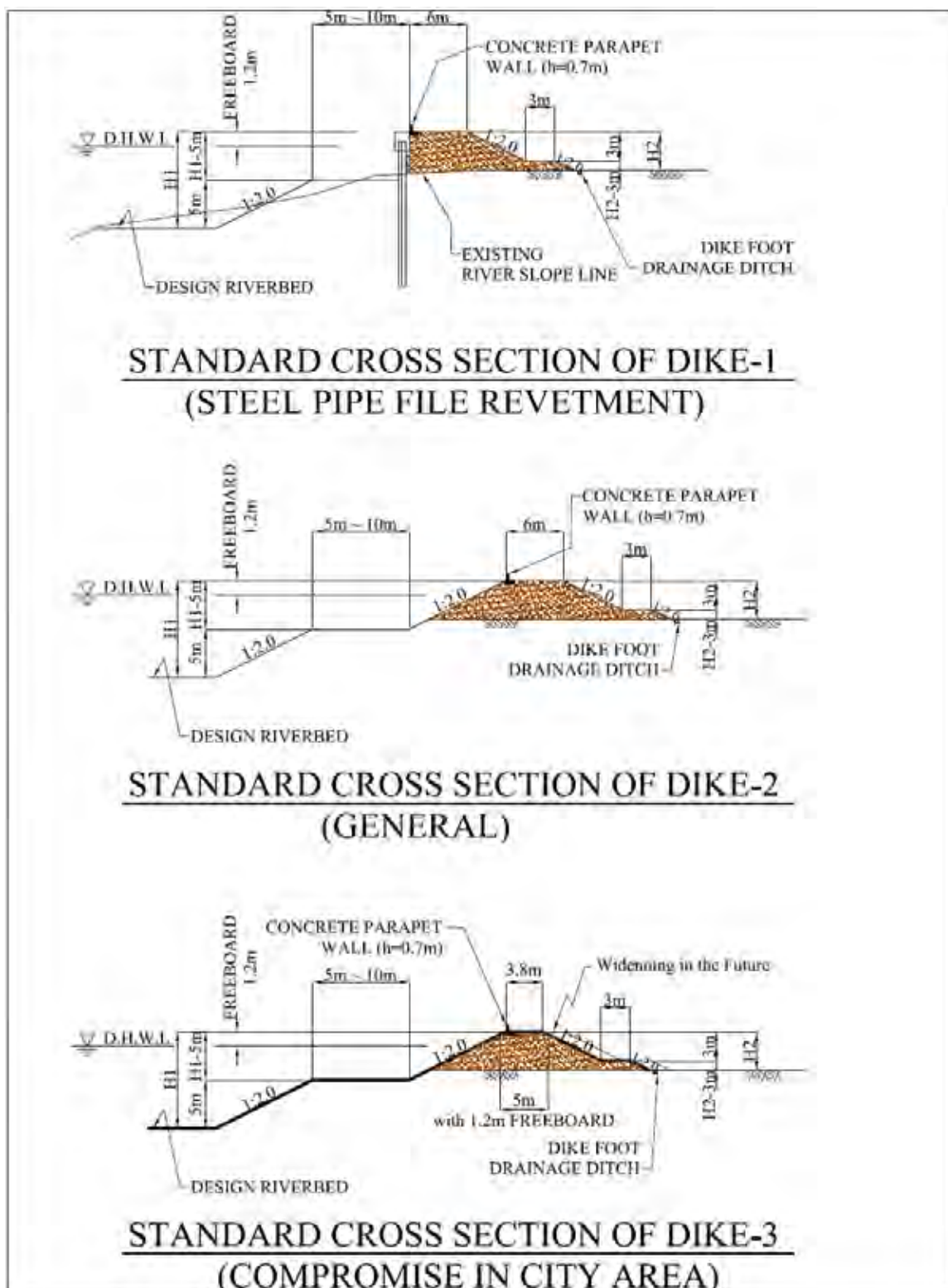












THE PREPARATORY STUDY FOR  
SECTOR LOAN FOR  
DISASTER RISK MANAGEMENT

---

CTI Engineering International Co., Ltd.  
Nippon Koei Co., Ltd

Figure 7.9  
Typical Cross Sections of  
Flood Protection Dikes Proposed for  
Ilog-Hilabangan River Improvement Plan