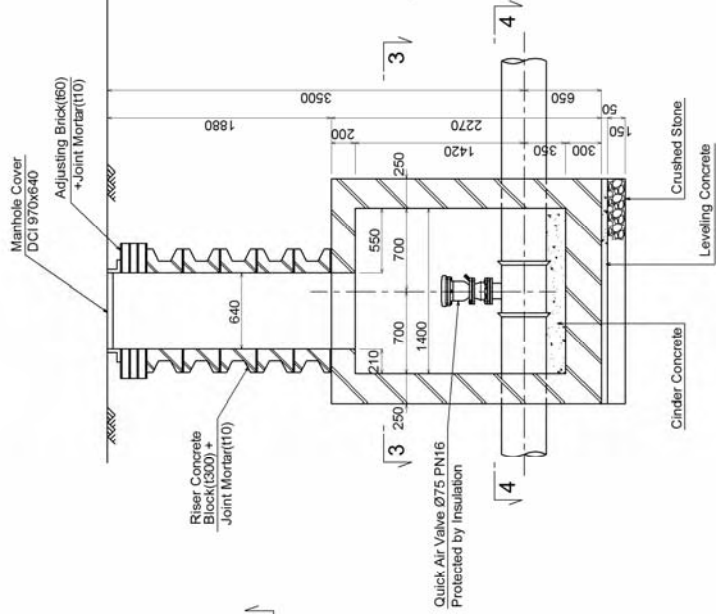
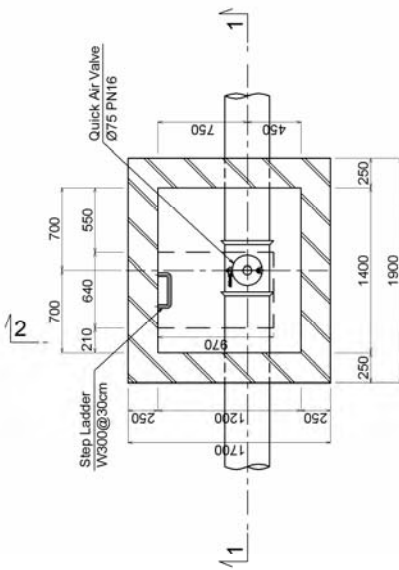


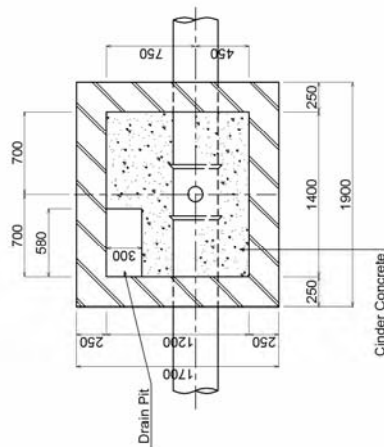
SECTION 2-2



SECTION 1-1



SECTION 3-3

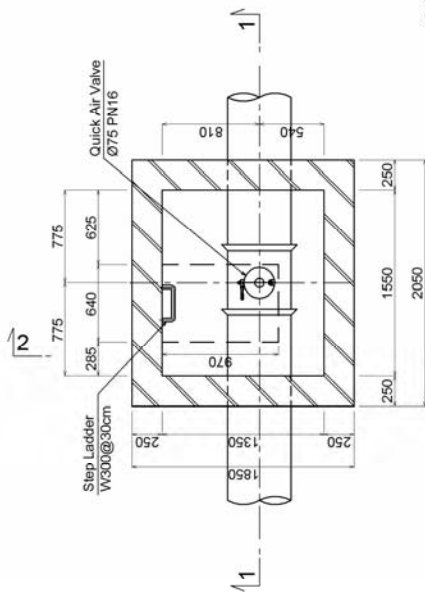


SECTION 4-4

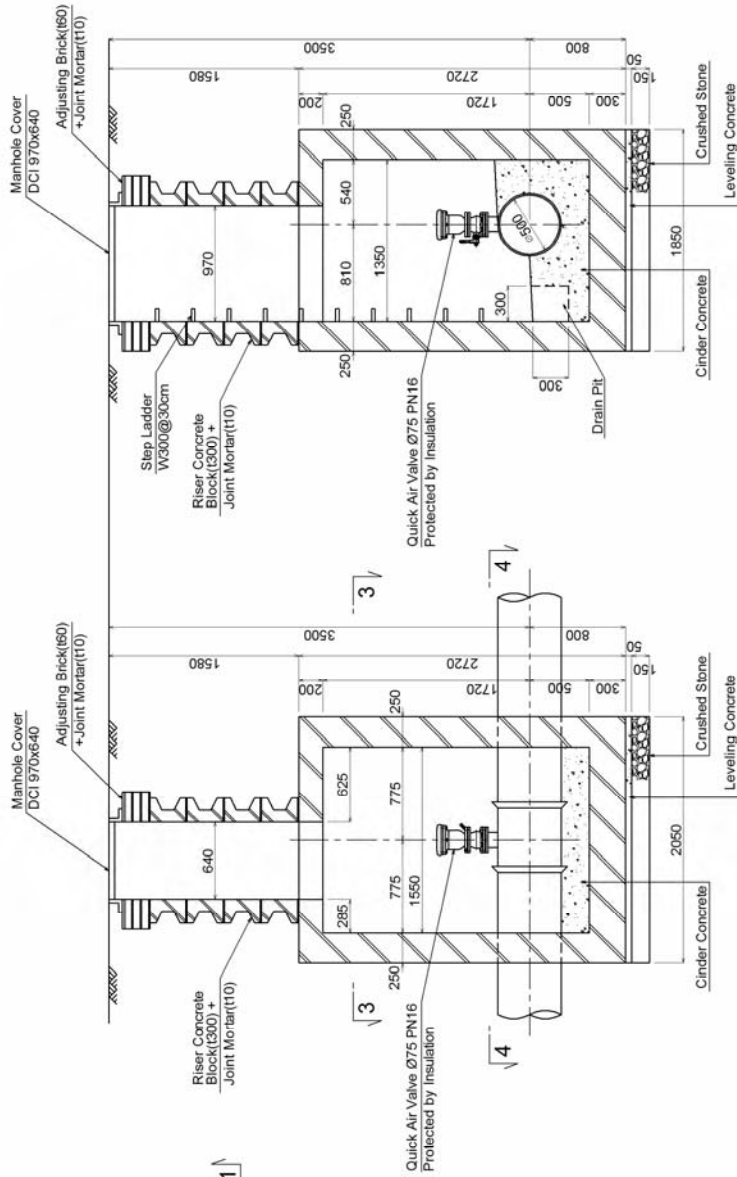
NO.	DATE	REVISION	BY	CHECKED	PROJECT
1					
2					
3					
4					
5					

WATER SUPPLY AND SEWERAGE AUTHORITY
 OF ULAANBAATAR CITY (USL&D) CO., LTD.
 PROJECT NAME: PREPARATORY STUDY (BASIC DESIGN) ON
 THE ULAANBAATAR WATER SUPPLY DEVELOPMENT PROJECT
 DESIGN TITLE:
 IN UULHUUETIN MONGOLIA
 (CIVIL WORKS)
 AIR VALVE CHAMBERS FOR
 CONVEYANCE PIPE (1/2)
 DRAWING NO. DW-C-020
 EXPLANATION
 SHEET 1 OF
 CONTRACT NAME AND NUMBER
 CONTRACTOR
 DESIGN/ENGINEER/ARCHITECT
 CONSULTANT/PROJECT MANAGER
 CITI ENGINEERING INTERNATIONAL CO., LTD.
 TOKYO, JAPAN

AIR VALVE CHAMBER FOR Ø350

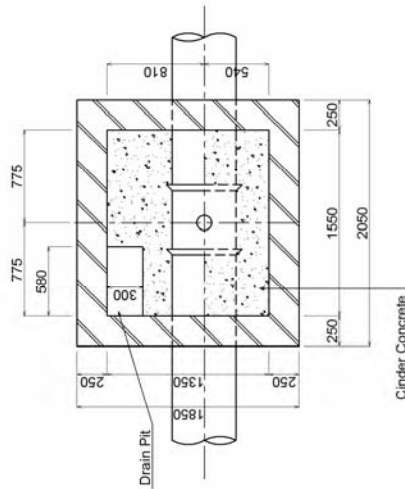


SECTION 3-3



SECTION 1-1

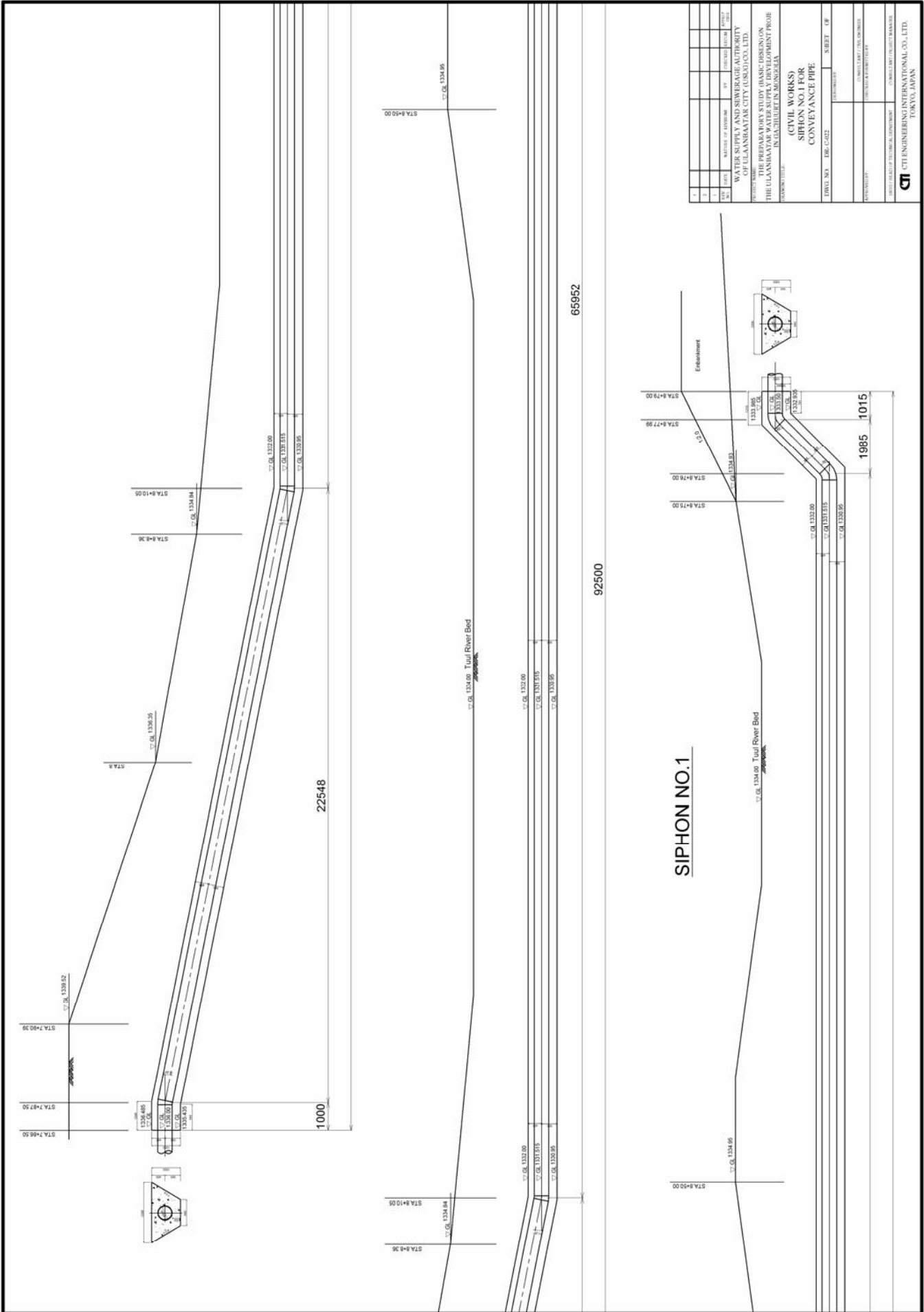
SECTION 2-2



SECTION 4-4

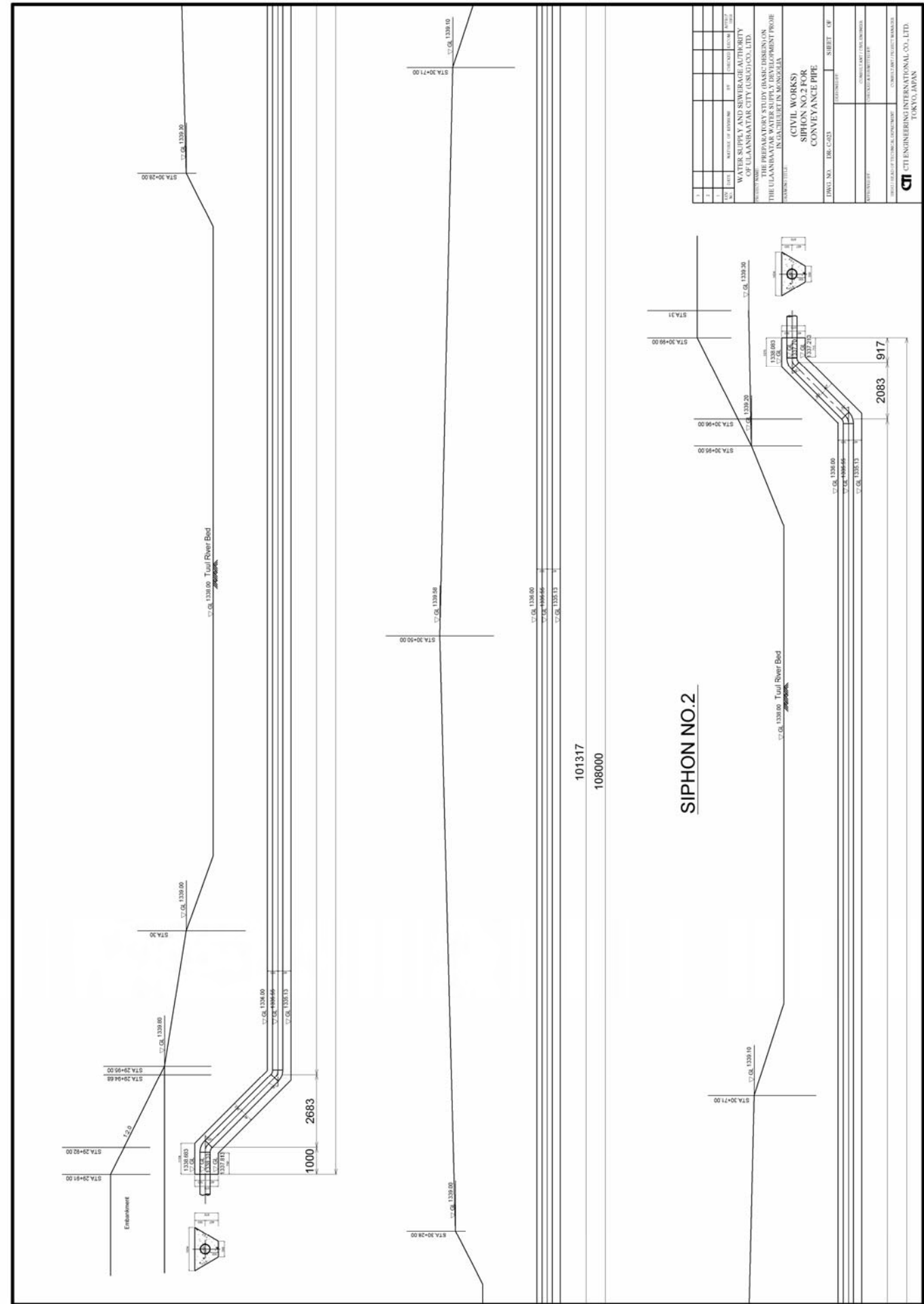
1					
2					
3					
4					
5					
6					
7					
8					
9					
10					
11					
12					
13					
14					
15					
16					
17					
18					
19					
20					
21					
22					
23					
24					
25					
26					
27					
28					
29					
30					
31					
32					
33					
34					
35					
36					
37					
38					
39					
40					
41					
42					
43					
44					
45					
46					
47					
48					
49					
50					
51					
52					
53					
54					
55					
56					
57					
58					
59					
60					
61					
62					
63					
64					
65					
66					
67					
68					
69					
70					
71					
72					
73					
74					
75					
76					
77					
78					
79					
80					
81					
82					
83					
84					
85					
86					
87					
88					
89					
90					
91					
92					
93					
94					
95					
96					
97					
98					
99					
100					

AIR VALVE CHAMBER FOR Ø500

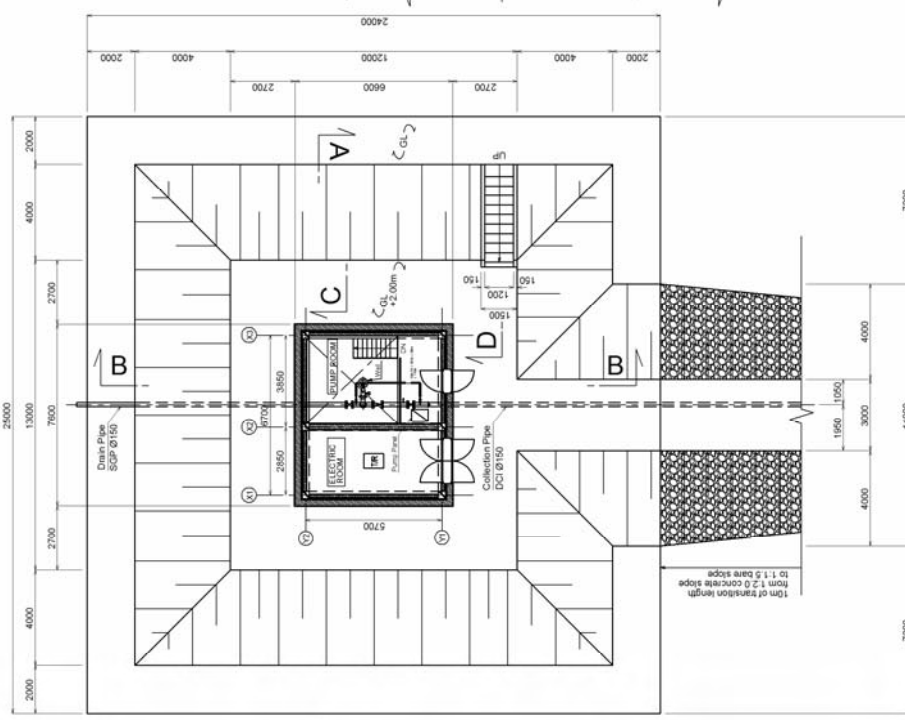


4	5	6	7	8	9	10	11	12	13	14	15	16	17	18	19	20	21	22	23	24	25	26	27	28	29	30	31	32	33	34	35	36	37	38	39	40	41	42	43	44	45	46	47	48	49	50	51	52	53	54	55	56	57	58	59	60	61	62	63	64	65	66	67	68	69	70	71	72	73	74	75	76	77	78	79	80	81	82	83	84	85	86	87	88	89	90	91	92	93	94	95	96	97	98	99	100
---	---	---	---	---	---	----	----	----	----	----	----	----	----	----	----	----	----	----	----	----	----	----	----	----	----	----	----	----	----	----	----	----	----	----	----	----	----	----	----	----	----	----	----	----	----	----	----	----	----	----	----	----	----	----	----	----	----	----	----	----	----	----	----	----	----	----	----	----	----	----	----	----	----	----	----	----	----	----	----	----	----	----	----	----	----	----	----	----	----	----	----	----	----	----	----	-----

WATER SUPPLY AND SEWERAGE AUTHORITY
 OF ULAANBAATAR CITY (USAD) CO., LTD.
 PROJECT TITLE: THE PREPARATORY STUDY (BASIC DESIGN) ON THE ULAANBAATAR WATER SUPPLY DEVELOPMENT PROJECT IN UULZHUUT IN MONGOLIA.
 DRAWING TITLE: (CIVIL WORKS) SIPHON NO.1 FOR CONVEYANCE PIPE
 DRAWING NO.: DWG-C-022
 SHEET: 08



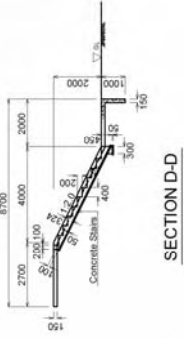
WEST OR EAST



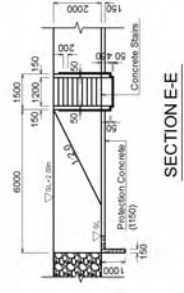
SOUTH OR NORTH

EAST OR WEST

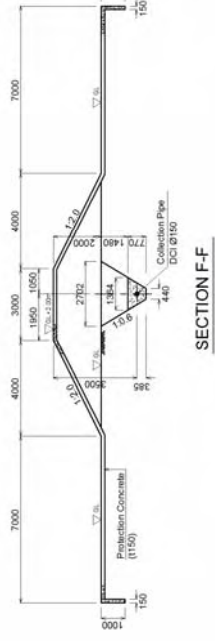
LAYOUT OF WELL PUMPING STATION



SECTION D-D



SECTION E-E



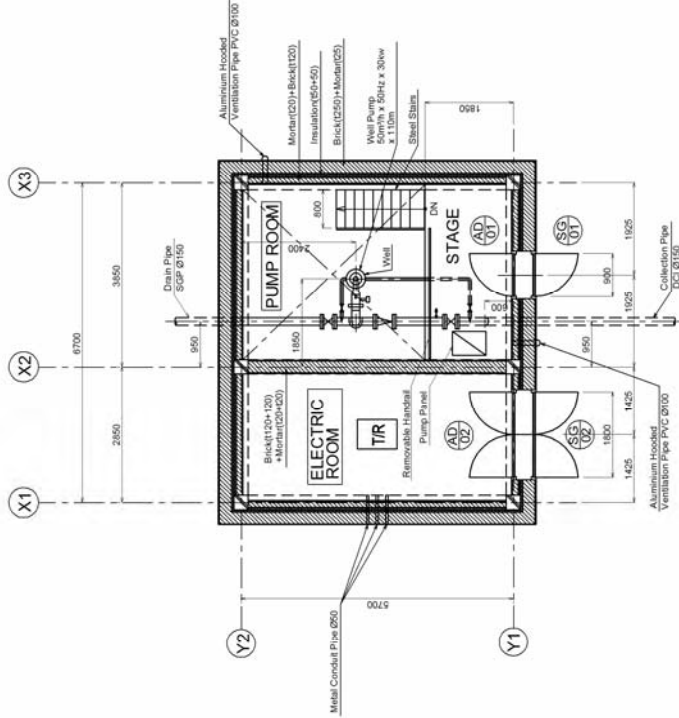
SECTION F-F

SLOPE PROTECTION

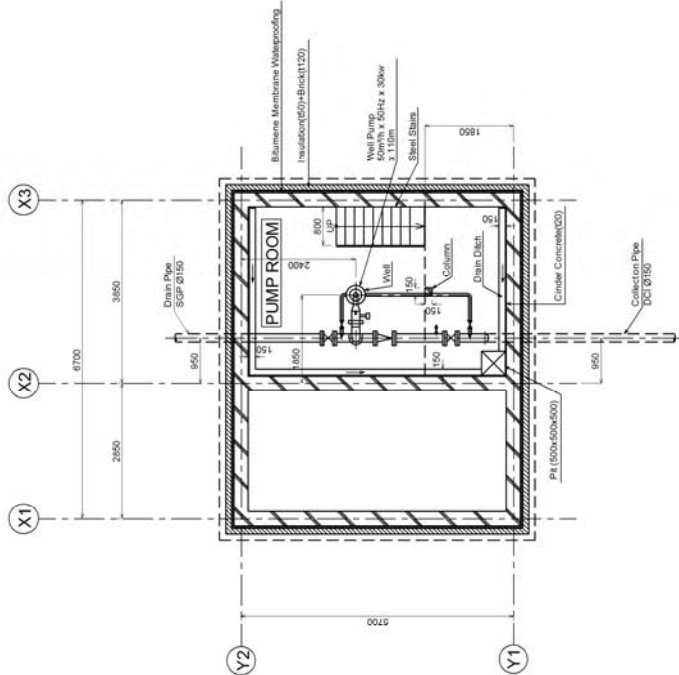
No.	DATE	REVISION	BY	CHECKED	SCALE
1					
2					
3					

WATER SUPPLY AND SEWERAGE AUTHORITY
 OF LAANBAATAR CITY (USGJ) CO., LTD.
 THE PREPARATORY STUDY (BASIC DESIGN) ON
 THE LAANBAATAR WATER SUPPLY DEVELOPMENT PROJECT
 IN GAUCHUUT IN MONGOLIA
 (ARCHITECTURAL WORKS)
 WELL PUMPING STATION
 LAYOUT
 DWG. NO. : 1B-WP-A-001
 SHEET : 08

CONSULTANT ARCHITECT
 CONSULTING ENGINEER
 CONSULTING ELECTRICAL ENGINEER
 CONSULTING STRUCTURAL ENGINEER
CTI ENGINEERING INTERNATIONAL CO., LTD.
 TOKYO JAPAN



FL

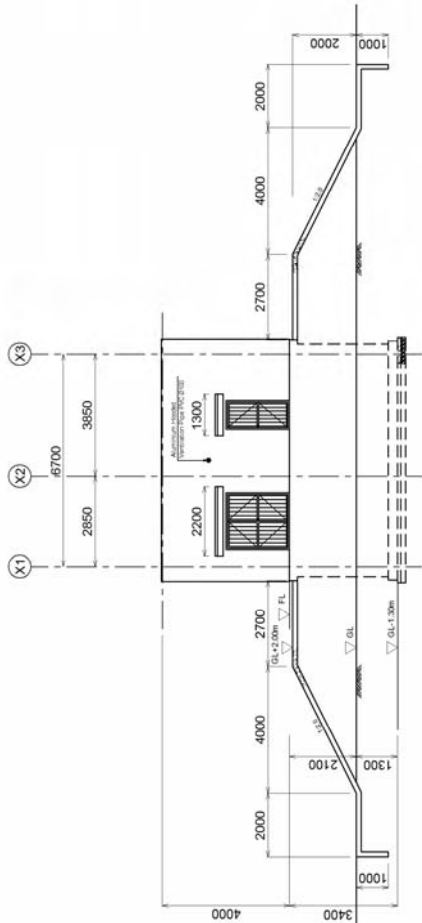


BFL

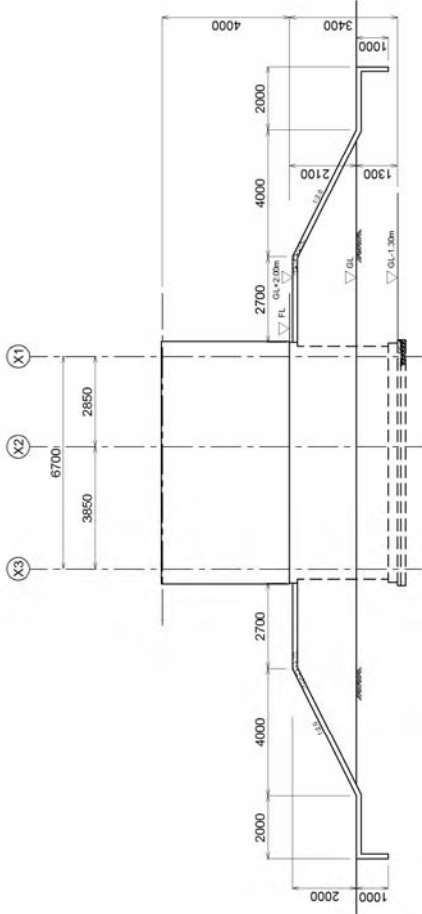
PLANS OF PUMP HOUSE

1									
2									
3									
4									
5									
6									
7									
8									
9									
10									
11									
12									
13									
14									
15									
16									
17									
18									
19									
20									
21									
22									
23									
24									
25									
26									
27									
28									
29									
30									
31									
32									
33									
34									
35									
36									
37									
38									
39									
40									
41									
42									
43									
44									
45									
46									
47									
48									
49									
50									
51									
52									
53									
54									
55									
56									
57									
58									
59									
60									
61									
62									
63									
64									
65									
66									
67									
68									
69									
70									
71									
72									
73									
74									
75									
76									
77									
78									
79									
80									
81									
82									
83									
84									
85									
86									
87									
88									
89									
90									
91									
92									
93									
94									
95									
96									
97									
98									
99									
100									

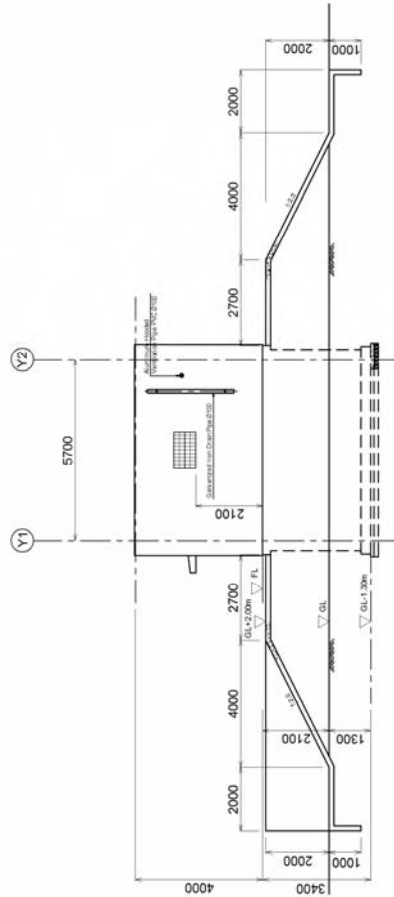
CTI ENGINEERING INTERNATIONAL CO., LTD.
TOKYO, JAPAN



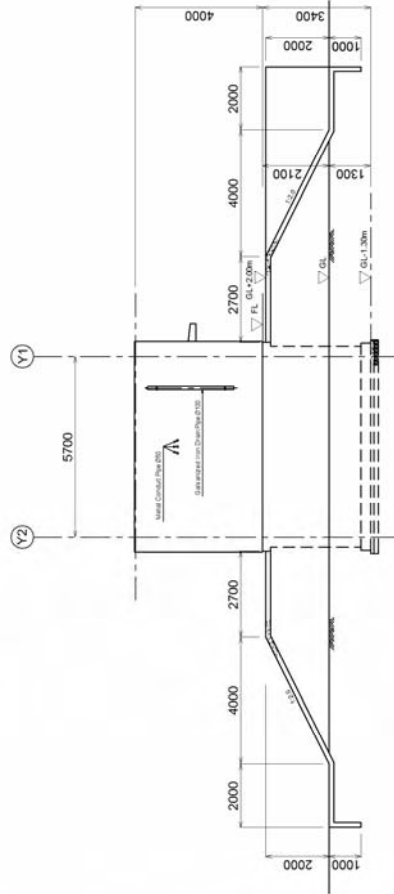
EAST OR WEST SIDE ELEVATION



WEST OR EAST SIDE ELEVATION



NORTH OR SOUTH SIDE ELEVATION



SOUTH OR NORTH SIDE ELEVATION

NO.	REVISION	DATE	BY	CHECKED	APPROVED
1					
2					
3					
4					
5					

PROJECT NAME: WATER SUPPLY AND SEWERAGE AUTHORITY OF ULAANBAATAR CITY (USAG/CU, LTD.)

THE PREPARATORY STUDY (BASIS DESIGN) OF THE ULAANBAATAR WATER SUPPLY AND SEWERAGE PROJECT IN GASHULLET IN MONGOLIA

PROJECT TITLE: (ARCHITECTURAL WORKS) WELL PUMPING STATION ELEVATIONS

DRAWING NO.: DS-A-003 SHEET: 01

DESIGNED BY: ARCHITECT

CHECKED BY: ARCHITECT

APPROVED BY: ARCHITECT

SCALE: AS SHOWN

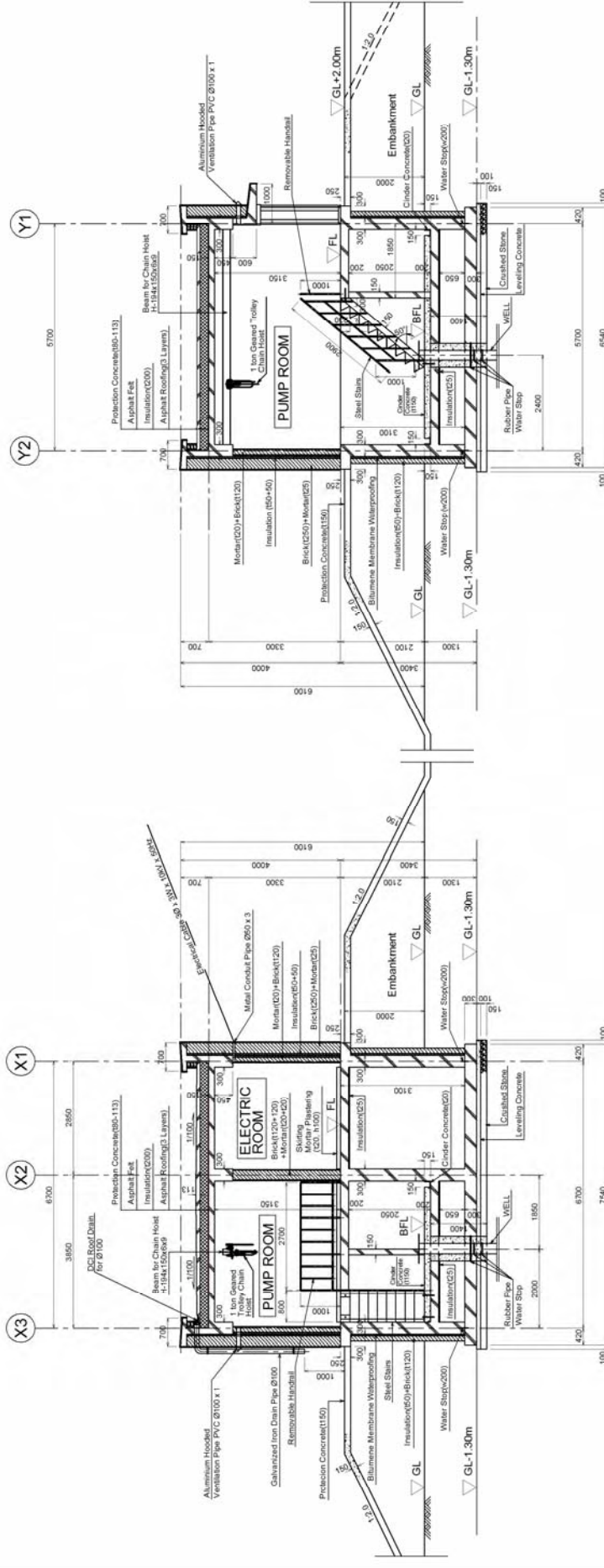
DATE: 2023.10.20

PROJECT LOCATION: ULAANBAATAR CITY, MONGOLIA

CLIENT: ULAANBAATAR WATER SUPPLY AND SEWERAGE AUTHORITY

DESIGNER: GTCI ENGINEERING INTERNATIONAL CO., LTD. TOKYO, JAPAN

ELEVATIONS OF WELL PUMPING STATION



SECTION A-A

SECTION B-B

SECTIONS OF PUMP HOUSE

NO.	DATE	REVISION	BY	CHECKED	APPROVED
1					
2					
3					
4					

WATER SUPPLY AND SEWERAGE AUTHORITY
OF ULAANBAATAR CITY (USOJ) CO., LTD.
THE PREPARATORY STUDY (BASIC DESIGN)
OF THE ULAANBAATAR WATER SUPPLY DEVELOPMENT PROJECT
IN GACHUULET IN MONGOLIA
PROJECT TITLE
(ARCHITECTURAL WORKS)
WELL PUMPING STATION
SECTIONS OF PUMP HOUSE
DRAWING NO. 106. A/04
SHEET 08

DESIGNED BY
CHECKED BY
APPROVED BY

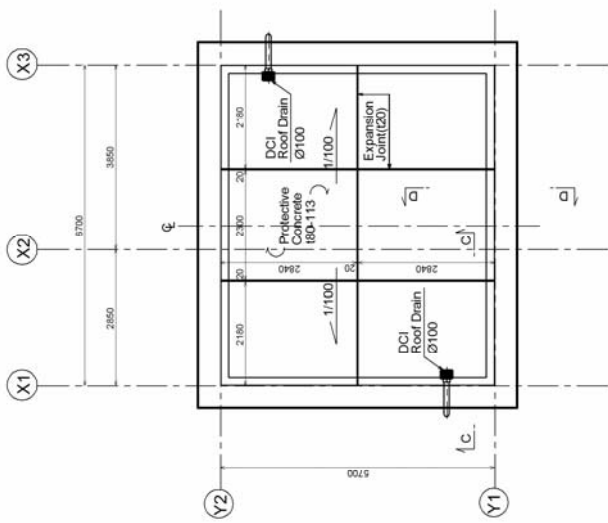
GENERAL CONTRACTOR
GENERAL CONTRACTOR
GENERAL CONTRACTOR

CHIEF ENGINEER
CHIEF ENGINEER
CHIEF ENGINEER

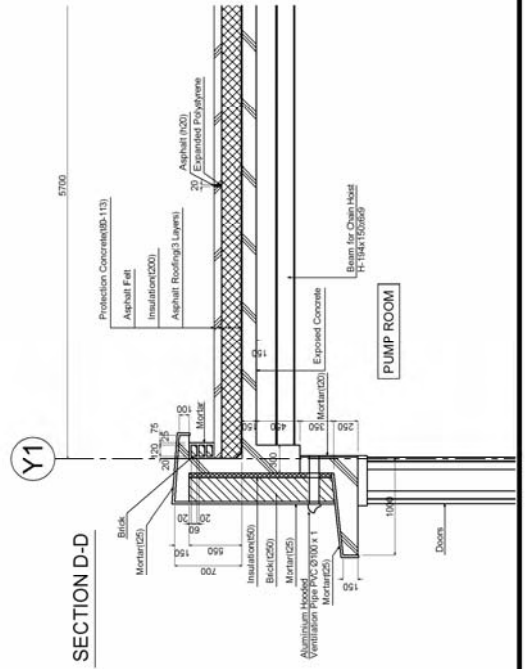
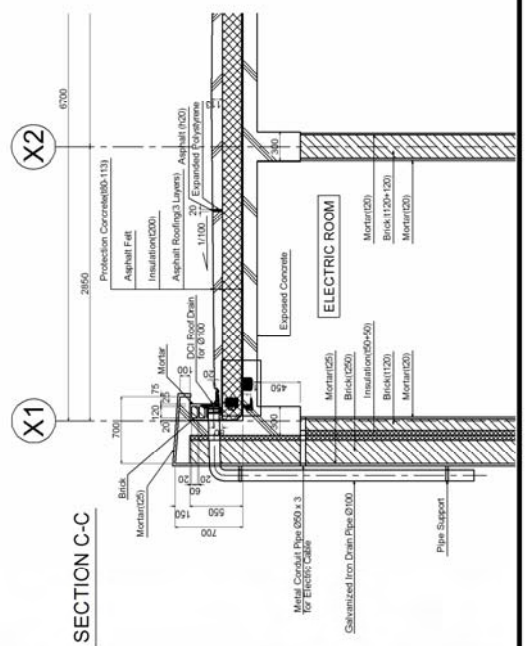
CTI ENGINEERING INTERNATIONAL CO., LTD.
TOKYO, JAPAN

Symbols	Aluminum Single Inward-Swinging Flush Door Chamber Room	Aluminum Double Inward-Swinging Louvered Flush Door Electric Room	Glass Block Window
Locations	Chamber Room	Electric Room	
Thickness	40 mm	40 mm	66 mm
Finish	Alumite	Alumite	Glass Block 145x45
Hardware	Hinge, Knob, Cylinder lock, Door closer	Hinge, Knob, Cylinder lock, Door closer, Louver	
Drawings			
Symbols	Steel Single Outward-Swinging Frame Door Pump Room	Steel Double Outward-Swinging Frame Door Pump Room	
Locations	Pump Room	Electric Room	
Thickness	40 mm	40 mm	
Finish	Black Oil Paint (JIS SGP or equivalent)	Black Oil Paint (JIS SGP or equivalent)	
Hardware	Hinge, Knob, Cylinder lock	Hinge, Knob, Cylinder lock	
Drawings			

FITTING LIST



DRAINAGE OF ROOF



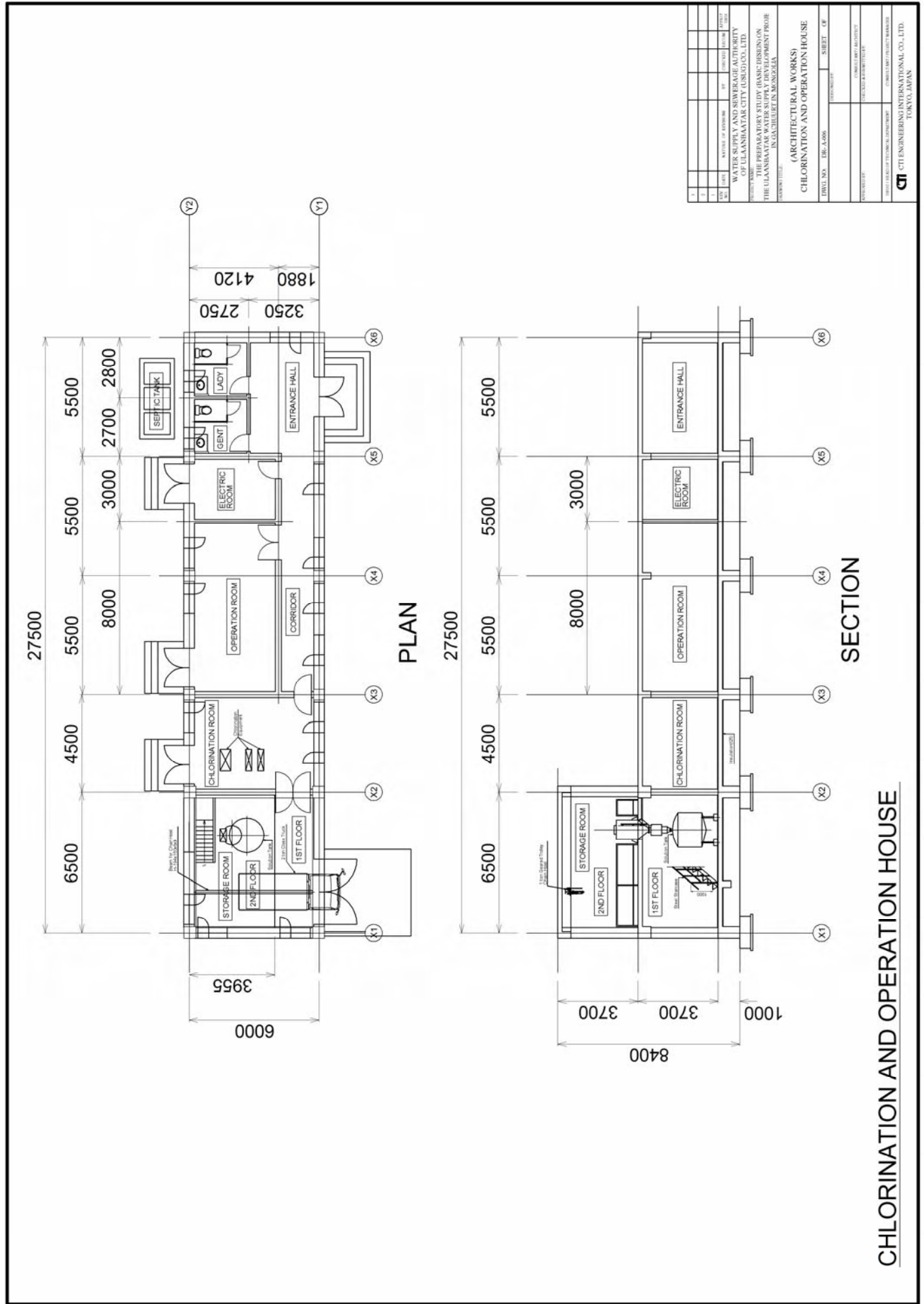
NO.	DATE	REVISION OF DRAWING	BY	CHECKED BY	SCALE
1					
2					
3					

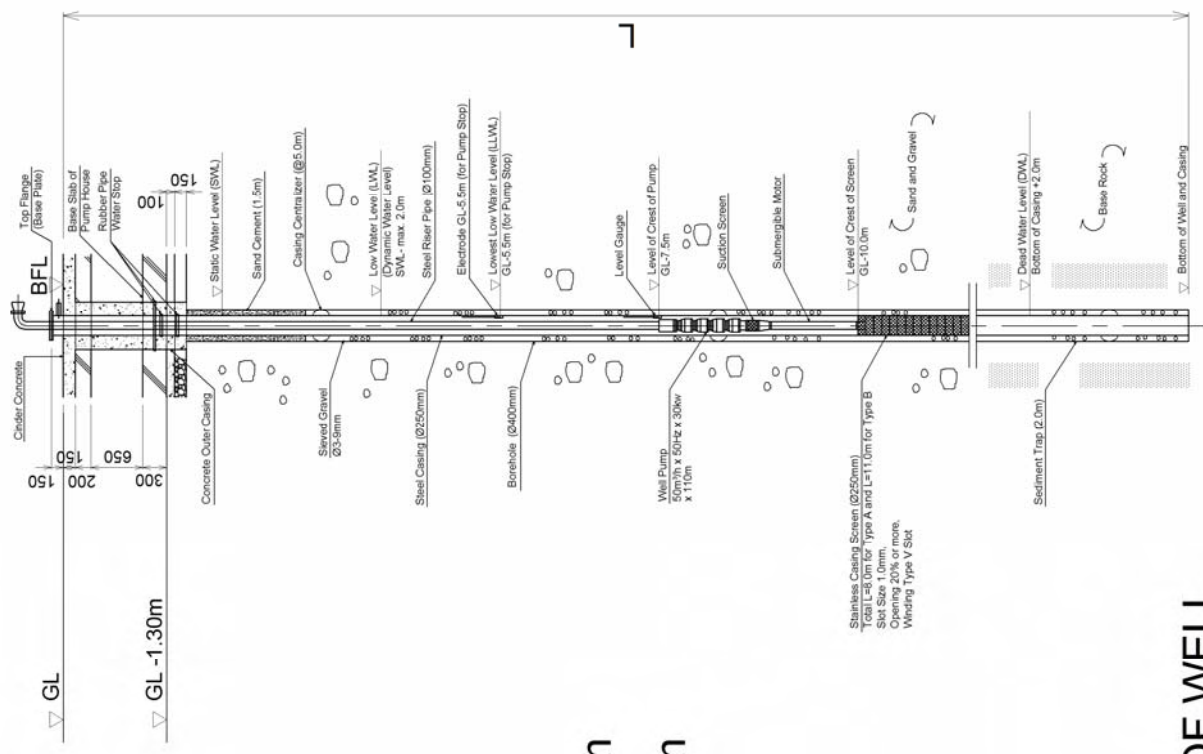
WATER SUPPLY AND SEWERAGE AUTHORITY
OF ULAANBAATAR CITY (U.S.A.) LTD.
THE PREPARATORY STUDY (BASIC DESIGN) ON
THE ULAANBAATAR WATER SUPPLY DEVELOPMENT PROJECT
IN GACHUIUT IN MONGOLIA
(ARCHITECTURAL WORKS)
WELL PUMPING STATION
DETAIL AND FITTING LIST

UJNGI NO. : 106.3/06
SHEET : 04

DESIGNED BY :
CHECKED BY :
DRAWN BY :
CONSULTANT PROJECT MANAGER :

CTI ENGINEERING INTERNATIONAL CO., LTD.
TOKYO, JAPAN

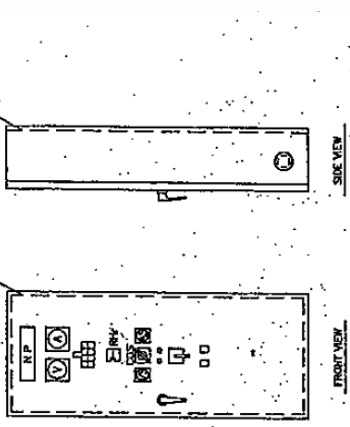
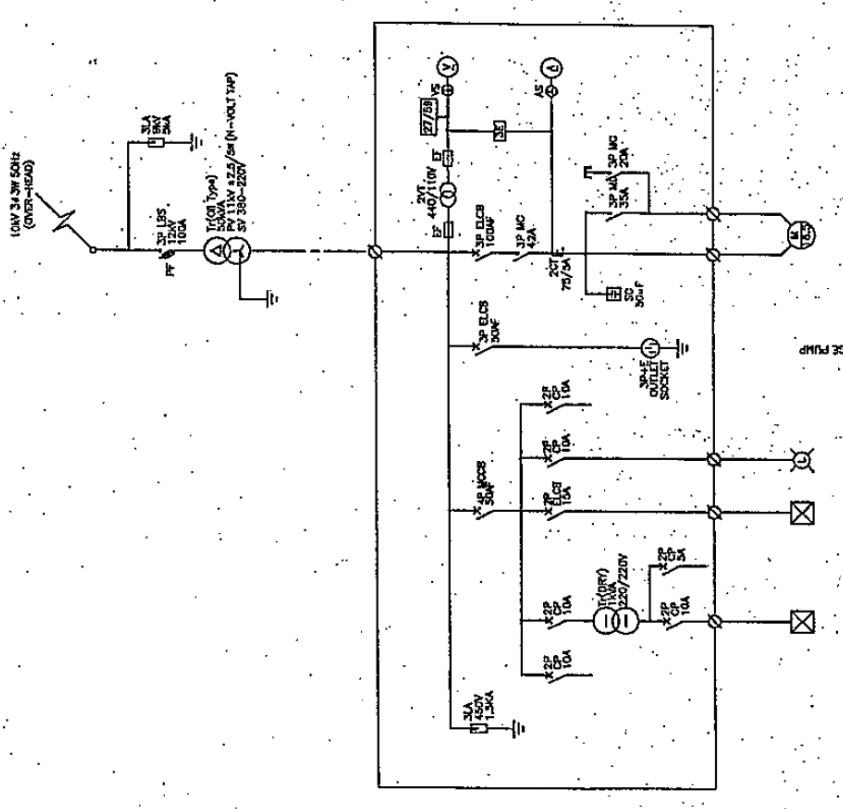




Type A: L=20m
Type B: L=30m

TYPICAL DRAWING OF WELL

NO.	DATE	REVISION	BY	CHECKED	APPROVED
WATER SUPPLY AND SEWERAGE AUTHORITY OF ULAANBAATAR CITY (USUJCO), LTD. PREPARATION OF THE PREPARATORY STUDY (BASIC DESIGN) ON THE ULAANBAATAR WATER SUPPLY DEVELOPMENT PROJECT IN GACHUULET, UMNUGOHA					
(MECHANICAL WORKS) STANDARD DESIGN OF WELLS					
DRAWN BY		DESIGNED BY		CHECKED BY	
APPROVED BY					
PROJECT HEAD OF TECHNICAL DEPARTMENT PROJECT ENGINEER PROJECT ASSISTANT PROJECT MANAGER					
CTI CTI ENGINEERING INTERNATIONAL CO., LTD. TOKYO, JAPAN					



WELL PUMP STARTER PANEL 16 Sets
WQ101/0110

REV	NO	DESCRIPTION	DATE	BY	CHECKED
WATER SUPPLY AND SEWERAGE AUTHORITY OF ULAANBAATAR CITY (USJAO) CO. LTD. PROJECT NAME: THE PREPARATORY STUDY (BASIC DESIGN) ON THE ULAANBAATAR WATER SUPPLY DEVELOPMENT PROJE CT IN UULHUUET IN MONGHOLIA DRAWING TITLE: (MECHANICAL WORKS) WELL PUMP STATION SINGLE LINE DIAGRAM DWG. NO.: 0101-0110 SHEET: 01					
DESIGNED BY: TECHNICAL ENGINEER CHECKED BY: CHIEF ENGINEER APPROVED BY: PROJECT MANAGER PROJECT: ULAANBAATAR WATER SUPPLY DEVELOPMENT PROJECT DRAWING NO.: 0101-0110-01					
CTI ENGINEERING INTERNATIONAL CO., LTD. TOKYO, JAPAN					

WELL PUMP STATION SINGLE LINE DIAGRAM