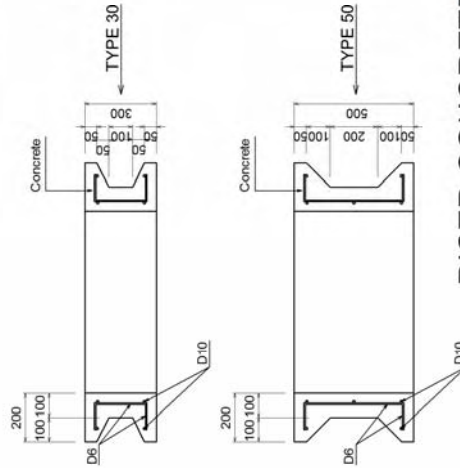
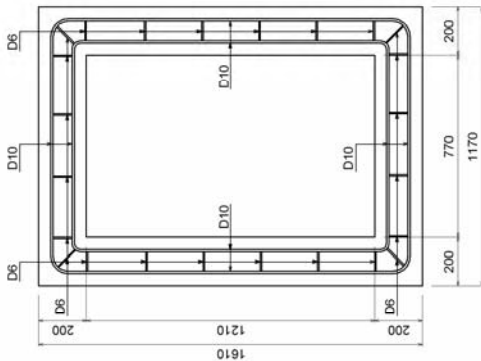
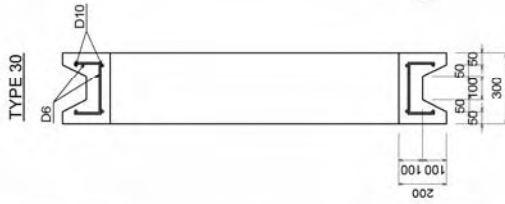


### TOP SLAB

Reinforcing Bar Table

D	Symbol	Reinforcing Bar Diameter	a	b	c	d	e	f	g	h
700	D	D16	9x2.15	7x0.20	7x0.65	11x2.15	3x2.30	12x0.60	12x0.65	10x2.30
			nx(m)	nx(m)	nx(m)	nx(m)	nx(m)	nx(m)	nx(m)	nx(m)



### RISER CONCRETE (1210x770)

## REINFORCEMENT DRAWING OF VALVE CHAMBER

NO.	DATE	REVISION	BY	CHECKED	DATE
1					
2					
3					

WATER SUPPLY AND SEWERAGE AUTHORITY  
 OF ULAANBAATAR CITY (USAC) CO. LTD.  
 PROJECT NAME: THE PREPARATORY STUDY (BASIC DESIGN) ON  
 THE ULAANBAATAR WATER SUPPLY DEVELOPMENT PROJECT  
 (CONTRACT NO. 15-143/01/01 IN ULAANBAATAR, MONGOLIA)

(CIVIL WORKS)  
 REINFORCEMENT DRAWING  
 OF VALVE CHAMBER

DRAWING NO.: DR-C-008  
 SHEET NO.: 1 OF 1

CONSULTANT / DESIGNER:  
 CONTRACTOR / SUBCONTRACTOR:  
 PROJECT LOCATION:  
 ULAANBAATAR, MONGOLIA

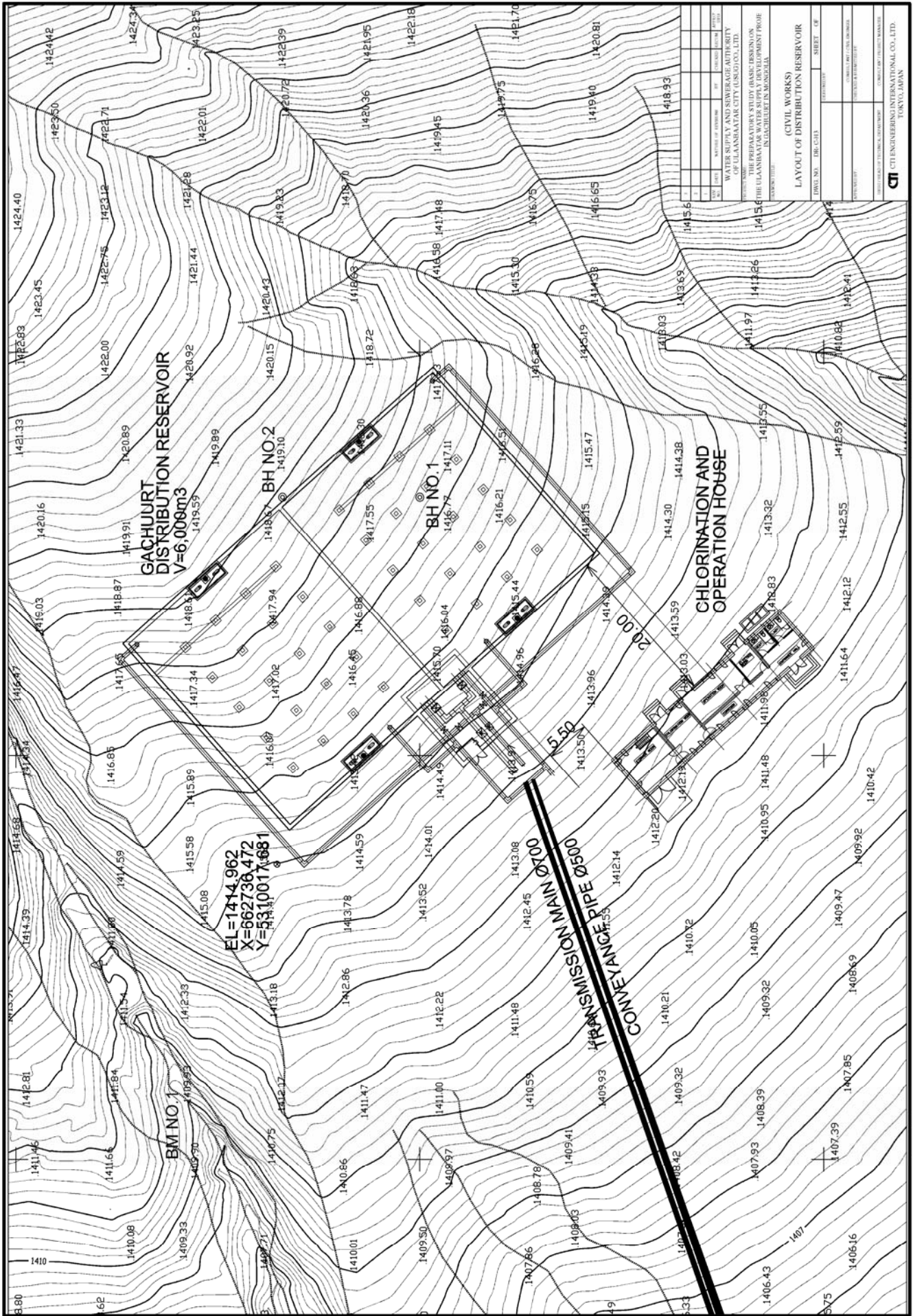
CTE ENGINEERING INTERNATIONAL CO., LTD.  
 TOKYO, JAPAN













**NORTH EAST  
DISTRIBUTION  
RESERVOIR  
V=3,000m<sup>3</sup> x 2=6,000m<sup>3</sup>**

1	DATE	REVISION	BY	REASON
2				
3				
4				
5				
6				
7				
8				
9				
10				
11				
12				
13				
14				
15				
16				
17				
18				
19				
20				
21				
22				
23				
24				
25				
26				
27				
28				
29				
30				
31				
32				
33				
34				
35				
36				
37				
38				
39				
40				
41				
42				
43				
44				
45				
46				
47				
48				
49				
50				
51				
52				
53				
54				
55				
56				
57				
58				
59				
60				
61				
62				
63				
64				
65				
66				
67				
68				
69				
70				
71				
72				
73				
74				
75				
76				
77				
78				
79				
80				
81				
82				
83				
84				
85				
86				
87				
88				
89				
90				
91				
92				
93				
94				
95				
96				
97				
98				
99				
100				

WATER SUPPLY AND SEWERAGE AUTHORITY  
OF ULAANBAATAR CITY (USUDOO), LTD.  
THE PREPARATORY STUDY (BASIC DESIGN) ON  
THE ULAANBAATAR WATER SUPPLY DEVELOPMENT PROJECT  
IN THE ULAANBAATAR AREA  
(CIVIL WORKS)  
TRANSMISSION MAIN  
PIPE CONNECTION TO  
NORTH EAST RESERVOIR  
DWG. NO. DR-0244 SHEET OF

PROJECT NO. DR-0244  
DATE: 2004.05  
SCALE: 1:500  
DRAWN BY: [Name]  
CHECKED BY: [Name]  
APPROVED BY: [Name]

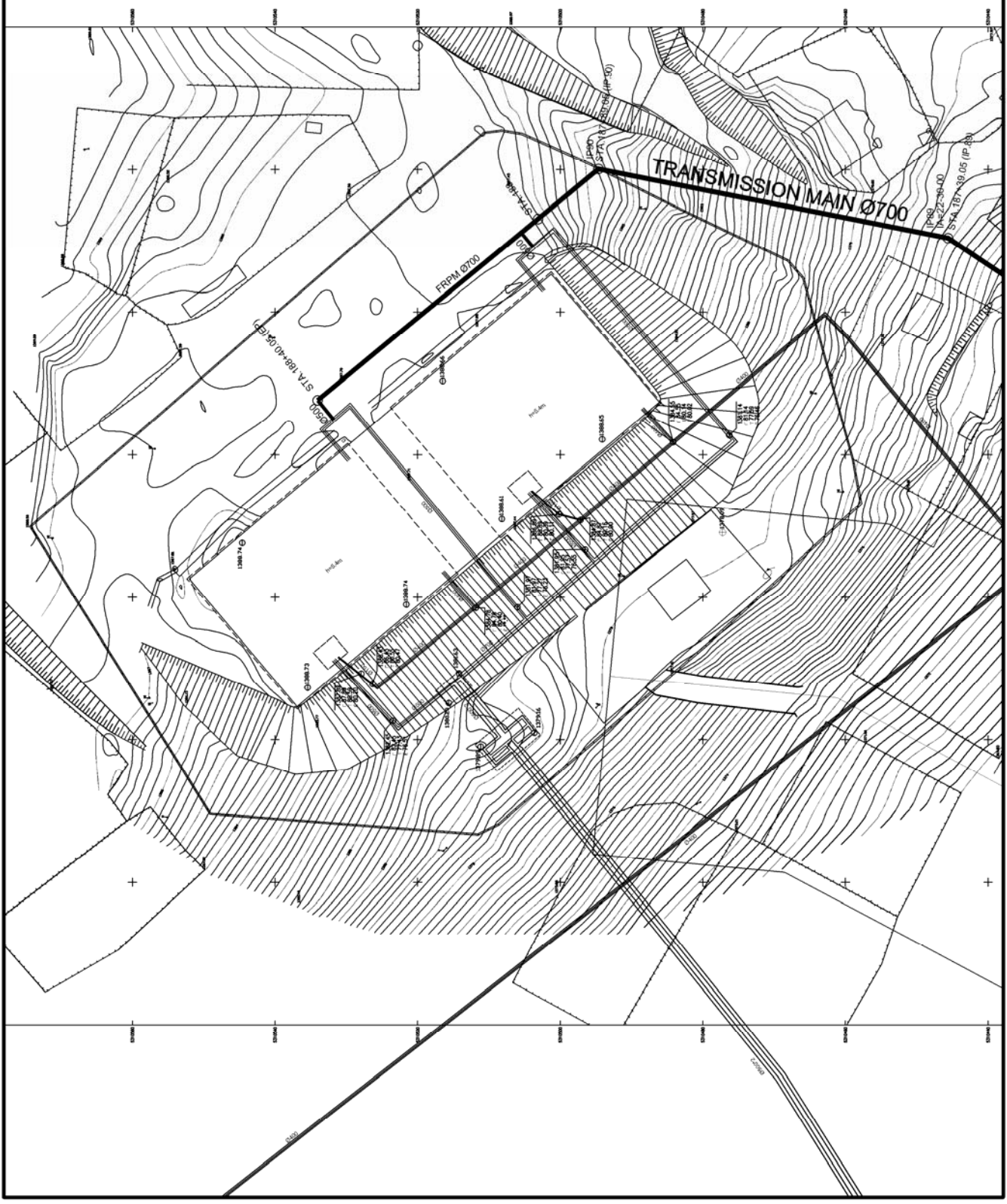
PROJECT NO. DR-0244  
DATE: 2004.05  
SCALE: 1:500  
DRAWN BY: [Name]  
CHECKED BY: [Name]  
APPROVED BY: [Name]

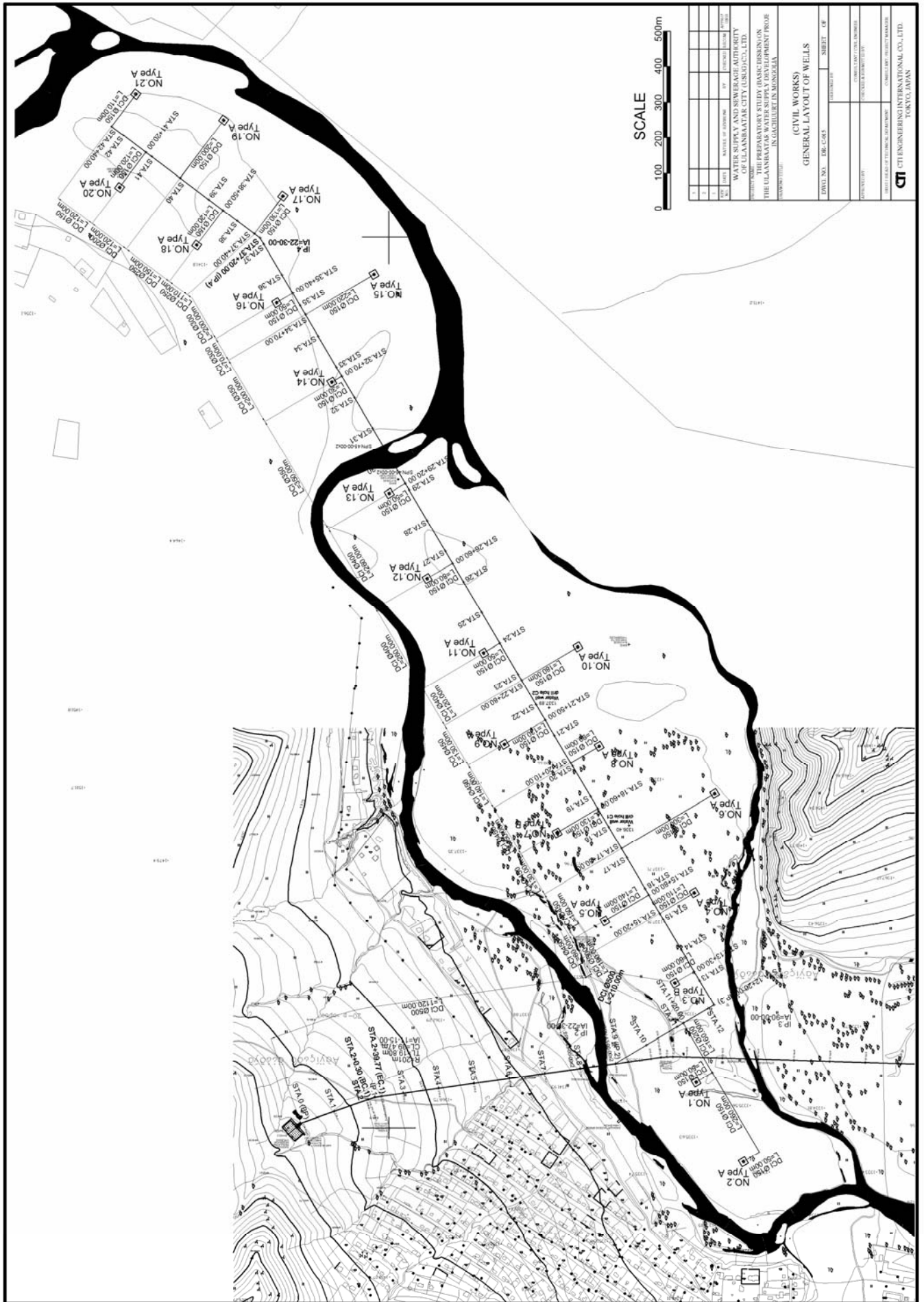
PROJECT NO. DR-0244  
DATE: 2004.05  
SCALE: 1:500  
DRAWN BY: [Name]  
CHECKED BY: [Name]  
APPROVED BY: [Name]

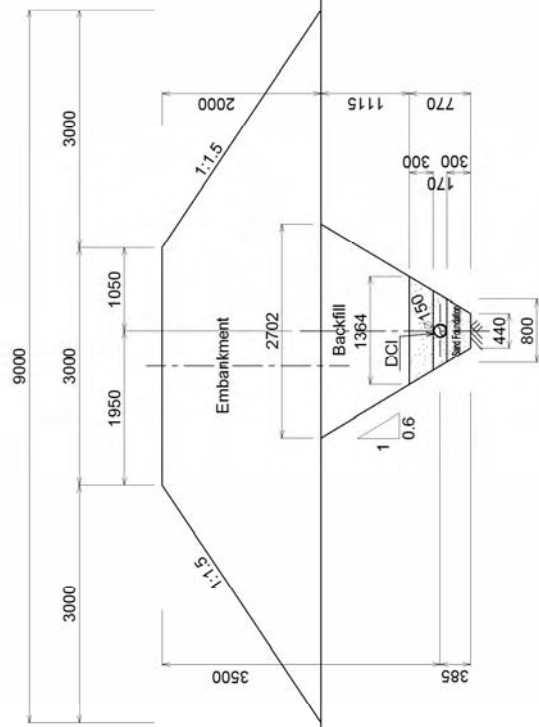
PROJECT NO. DR-0244  
DATE: 2004.05  
SCALE: 1:500  
DRAWN BY: [Name]  
CHECKED BY: [Name]  
APPROVED BY: [Name]

PROJECT NO. DR-0244  
DATE: 2004.05  
SCALE: 1:500  
DRAWN BY: [Name]  
CHECKED BY: [Name]  
APPROVED BY: [Name]

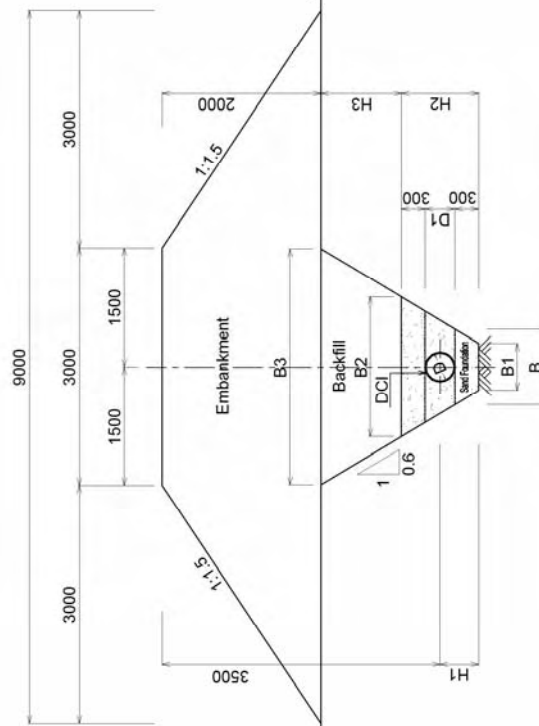
PROJECT NO. DR-0244  
DATE: 2004.05  
SCALE: 1:500  
DRAWN BY: [Name]  
CHECKED BY: [Name]  
APPROVED BY: [Name]







TYPICAL CROSS SECTION OF COLLECTION PIPES



TYPICAL CROSS SECTION OF CONVEYANCE PIPE

Unit: mm										
D <sup>1)</sup>	D <sup>2)</sup>	B	B1	B2	B3	H1	H2	H3		
150	170	800	440	1364	2702	385	770	1115		
200	220	800	440	1324	2732	410	820	1090		
250	270	850	490	1534	2812	435	870	1065		
300	325	900	540	1650	2895	463	925	1038		
350	375	950	590	1760	2975	488	975	1013		
400	425	1000	640	1870	3085	513	1025	988		
450	475	1050	690	1980	3135	538	1075	963		
500	530	1300	940	2296	3418	565	1130	935		

Notes  
<sup>1)</sup> Nominal inside diameter  
<sup>2)</sup> Rounded outside diameter of ISO 2531 K-9 or JIS G5526 D3

NO.	DATE	REVISION	BY	CHKD	DATE
1					
2					
3					
4					
5					
6					
7					
8					
9					
10					

PROJECT: WATER SUPPLY AND SEWERAGE AUTHORITY OF ULAANBAATAR CITY (USLD) CO., LTD.  
 TITLE: PREPARATORY STUDY (BASIC DESIGN) ON THE ULAANBAATAR WATER SUPPLY DEVELOPMENT PROJECT IN GAZILURTIN MONSIZULA  
 DRAWING TITLE: (CIVIL WORKS)  
 TYPICAL CROSS SECTION FOR CONVEYANCE PIPE AND COLLECTION PIPES  
 DRAWING NO.: DWG-C014  
 SHEET NO.: SHEET 48  
 PROJECT NO.: 2015-2016-001  
 CONTRACT NO.: 2015-2016-001  
 PROJECT MANAGER: [Name]  
 DESIGNER: [Name]  
 CHECKER: [Name]  
 APPROVED: [Name]  
 DATE: [Date]  
 CITE ENGINEERING INTERNATIONAL CO., LTD. TOKYO, JAPAN





