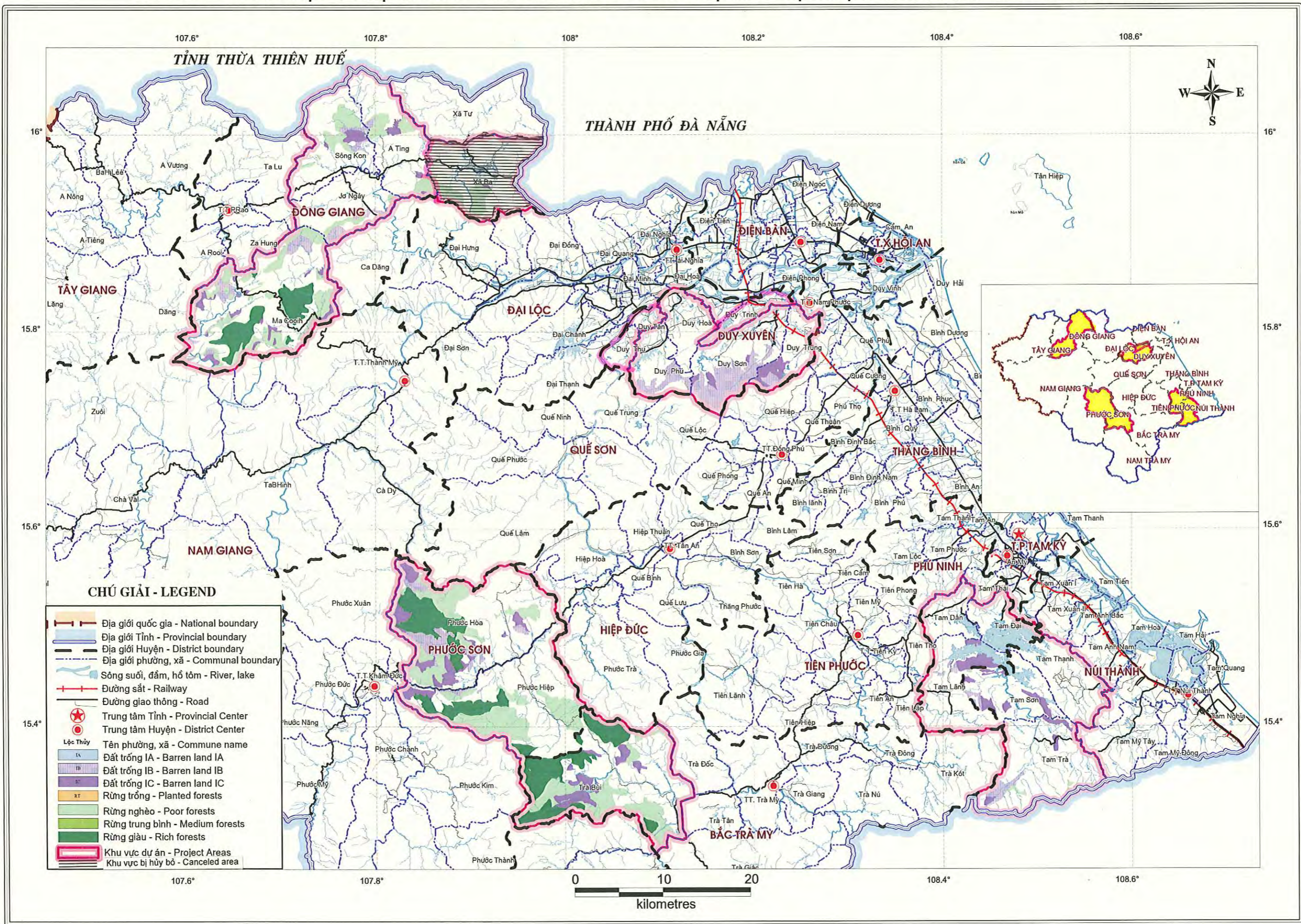


MAP OF LAND USE CLASSIFICATION OF PROTECTION FOREST LAND IN THE PROPOSED PROJECT AREA OF QUANG NAM PROVINCE
 BẢN ĐỒ PHÂN LOẠI SỬ DỤNG ĐẤT TRONG RỪNG PHÒNG HỘ KHU VỰC DỰ ÁN ĐỀ XUẤT TỈNH QUẢNG NAM

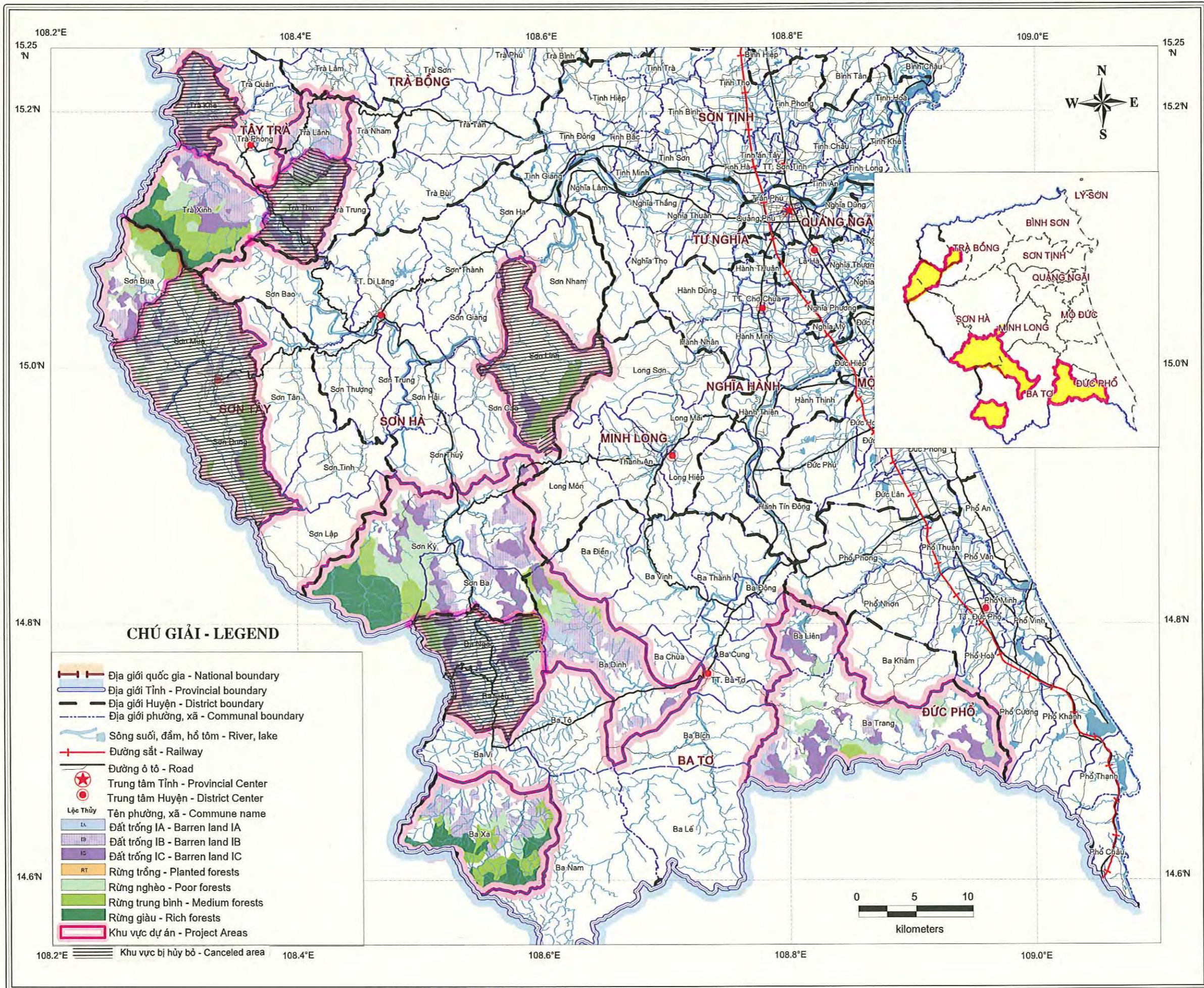


CHÚ GIẢI - LEGEND

- Địa giới quốc gia - National boundary
- Địa giới Tỉnh - Provincial boundary
- Địa giới Huyện - District boundary
- Địa giới phường, xã - Communal boundary
- Sông suối, đầm, hồ tôm - River, lake
- Đường sắt - Railway
- Đường giao thông - Road
- Trung tâm Tỉnh - Provincial Center
- Trung tâm Huyện - District Center
- Tên phường, xã - Commune name
- Đất trống IA - Barren land IA
- Đất trống IB - Barren land IB
- Đất trống IC - Barren land IC
- Rừng trồng - Planted forests
- Rừng nghèo - Poor forests
- Rừng trung bình - Medium forests
- Rừng giàu - Rich forests
- Khu vực dự án - Project Areas
- Khu vực bị hủy bỏ - Canceled area

0 10 20 kilometres

MAP OF LAND USE CLASSIFICATION OF PROTECTION FOREST LAND IN THE PROPOSED PROJECT AREA OF QUANG NGAI PROVINCE
 BẢN ĐỒ PHÂN LOẠI SỬ DỤNG ĐẤT TRONG RỪNG PHÒNG HỘ KHU VỰC DỰ ÁN ĐỀ XUẤT TỈNH QUẢNG NGÃI

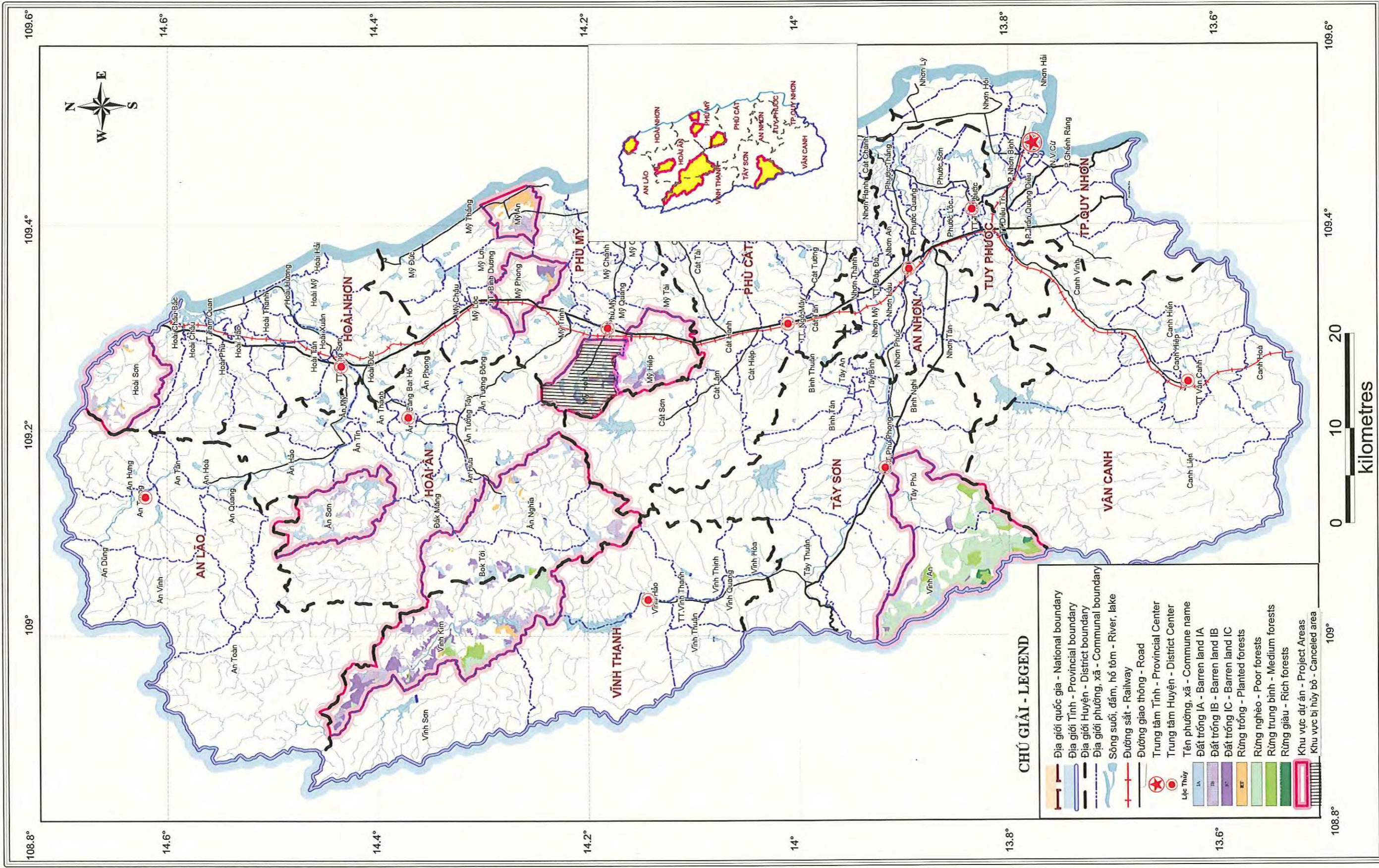


MAP OF LAND USE CLASSIFICATION OF PROTECTION FOREST LAND IN THE PROPOSED

PROJECT AREA OF BINH DINH PROVINCE

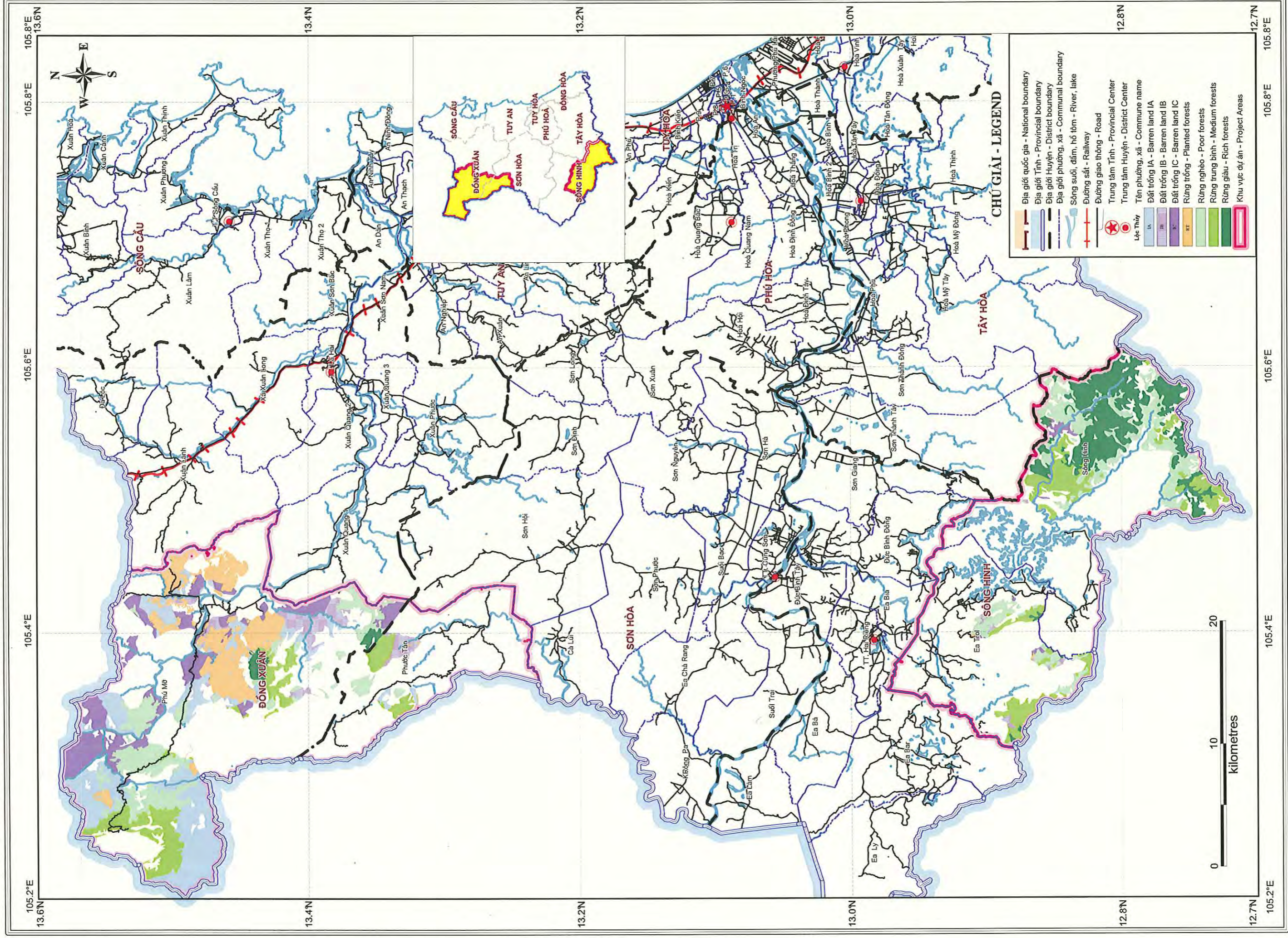
BẢN ĐỒ PHÂN LOẠI SỬ DỤNG ĐẤT TRONG RỪNG PHÒNG HỘ

KHU VỰC DỰ ÁN ĐỀ XUẤT TỈNH BÌNH ĐỊNH

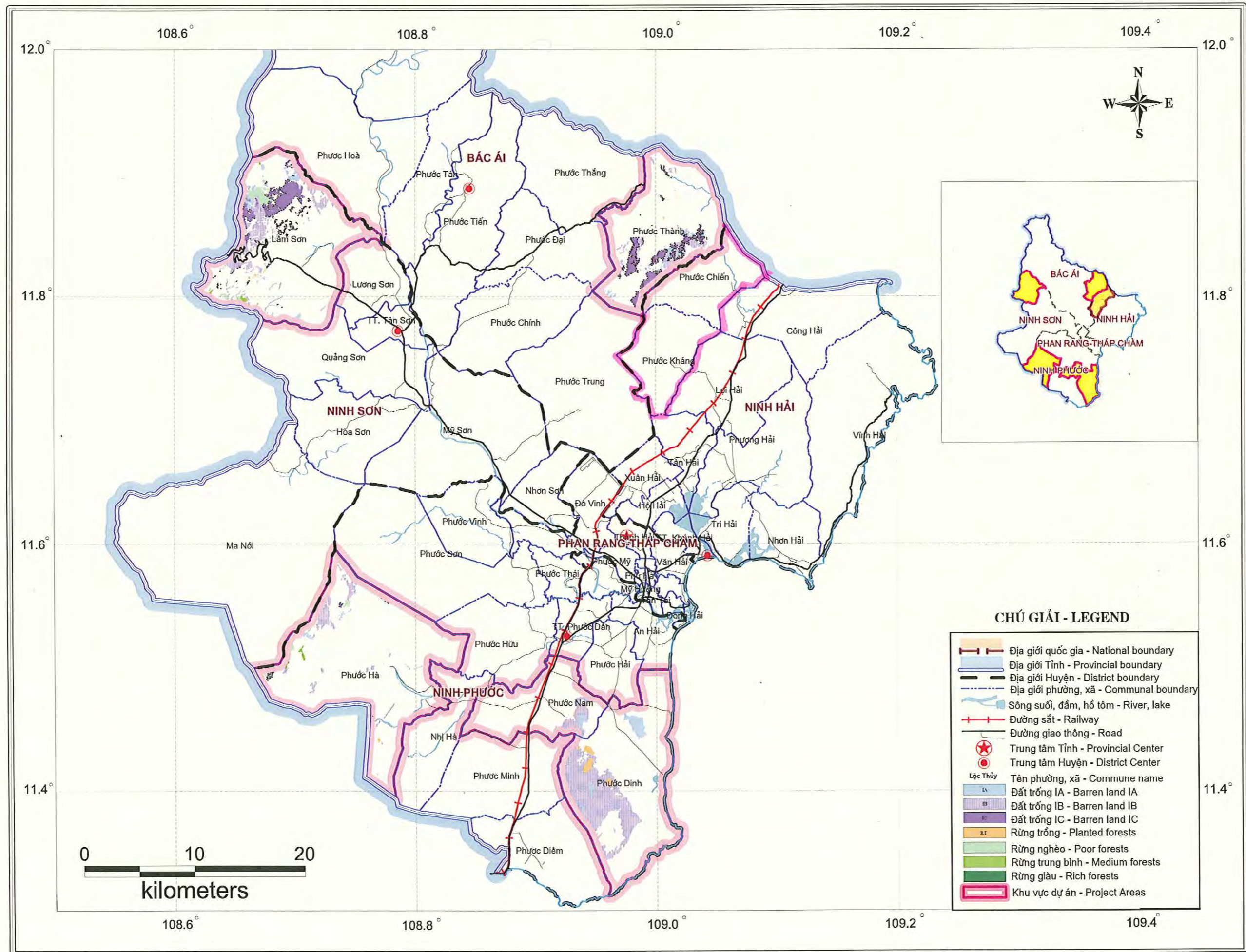


MAP OF LAND USE CLASSIFICATION OF PROTECTION FOREST LAND IN THE PROPOSED PROJECT AREA OF PHU YEN PROVINCE

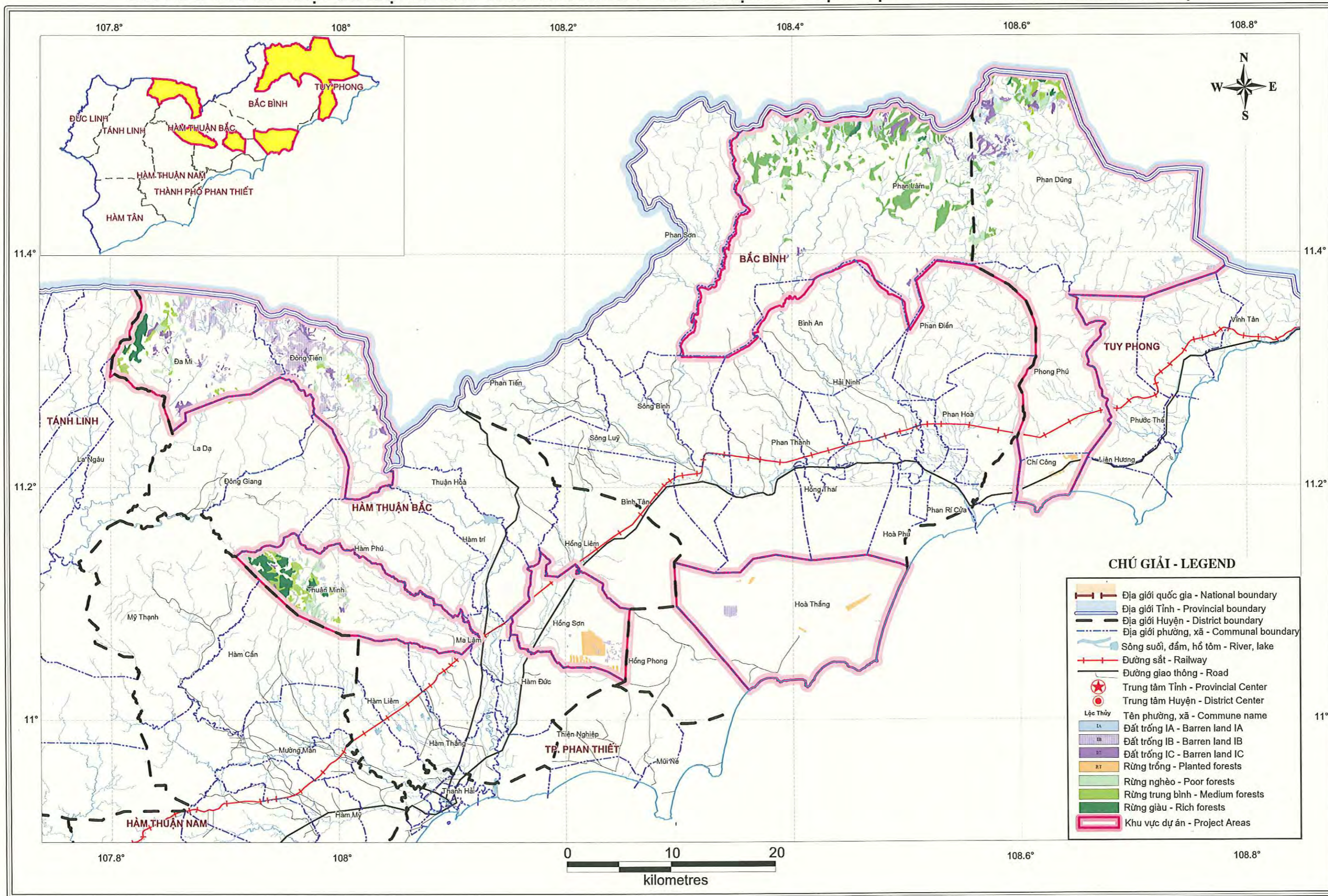
BẢN ĐỒ PHÂN LOẠI SỬ DỤNG ĐẤT TRONG RỪNG PHÒNG HỘ KHU VỰC DỰ ÁN ĐỀ XUẤT TỈNH PHÚ YÊN



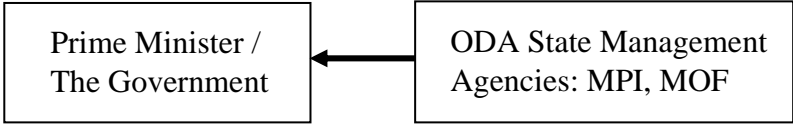
MAP OF LAND USE CLASSIFICATION OF PROTECTION FOREST LAND IN THE PROPOSED PROJECT AREA OF NINH THUAN PROVINCE
 BẢN ĐỒ PHÂN LOẠI SỬ DỤNG ĐẤT TRONG RỪNG PHÒNG HỘ KHU VỰC DỰ ÁN ĐỀ XUẤT TỈNH NINH THUẬN



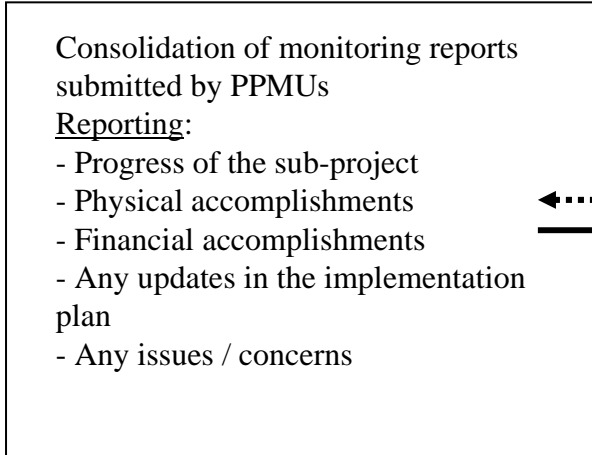
MAP OF LAND USE CLASSIFICATION OF PROTECTION FOREST LAND IN THE PROPOSED
PROJECT AREA OF BINH THUAN PROVINCE
BẢN ĐỒ PHÂN LOẠI SỬ DỤNG ĐẤT TRONG RỪNG PHÒNG HỘ KHU VỰC DỰ ÁN ĐỀ XUẤT TỈNH BÌNH THUẬN



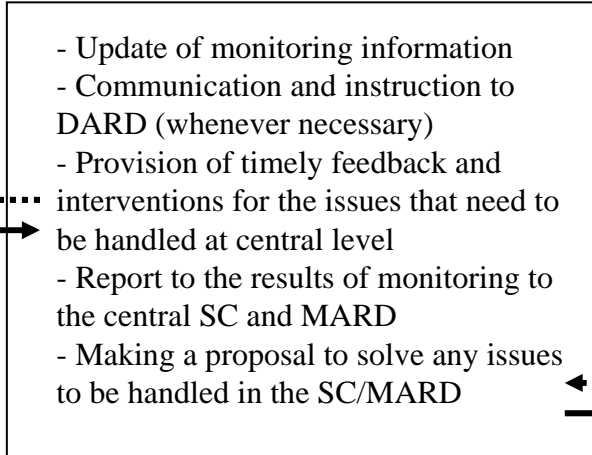
Central level



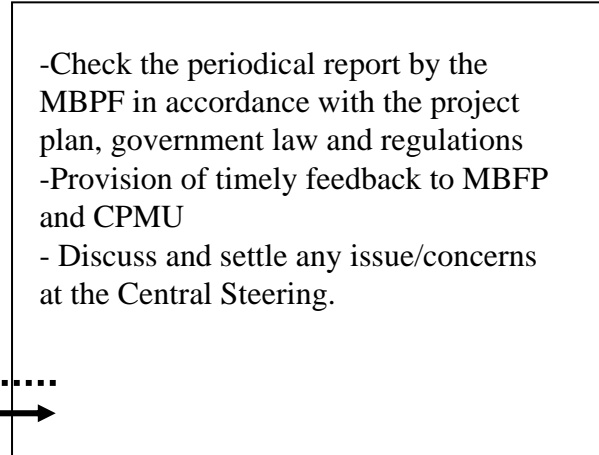
CPMU



MBFP (Project Owner)



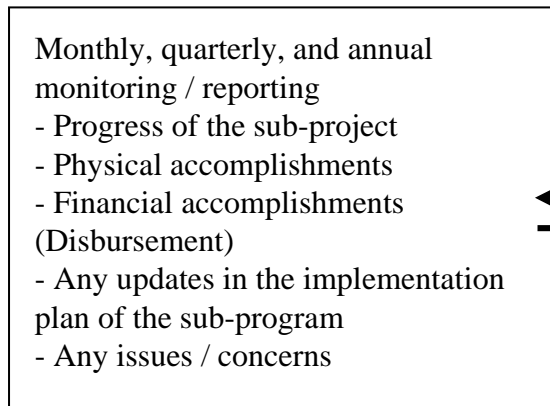
CSC/MARD (Line Agency)



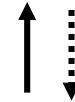
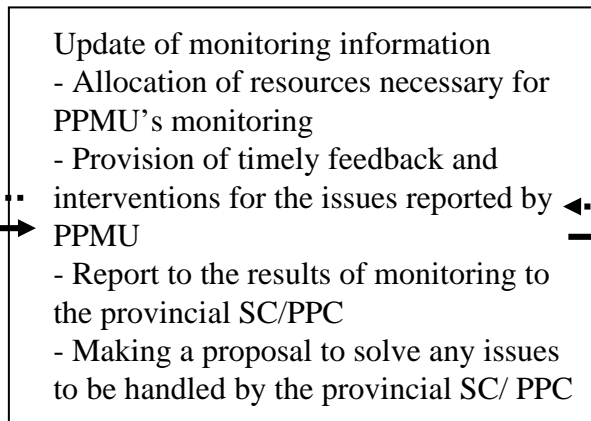
Provincial level



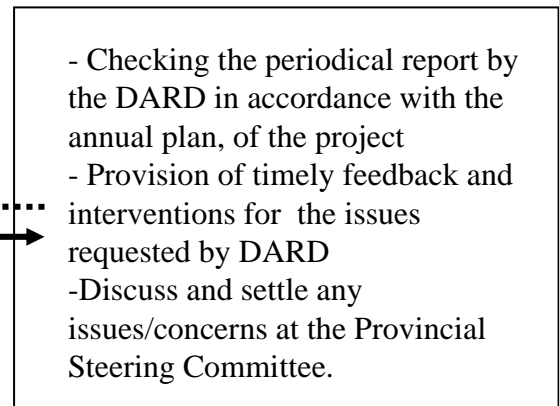
PPMU



DARD (Project Owner)



PSC/PPC (Line Agency)



→ Reporting → Instruction & Suggestion

Figure 3-1. Reporting and Communication System to Monitor the Project Implementation

Figure 3.2 Implementation Schedule of the Project

Name of the province
 Proposed Implementation Schedule
 Please fill in the cell colored yellow.

	Responsible party	Executer (contractor)	Participation party	1st												2nd												3rd												4th												5th				6th				7th				8th				9th				10th				11th			
				2010												2011												2012												2013												2014				2015				2016				2017				2018				2019				2020			
				1	2	3	4	5	6	7	8	9	10	11	12	1	2	3	4	5	6	7	8	9	10	11	12	1	2	3	4	5	6	7	8	9	10	11	12	1	2	3	4	5	6	7	8	9	10	11	12	I	II	III	IV	I	II	III	IV	I	II	III	IV	I	II	III	IV	I	II	III	IV	I	II	III	IV	I	II	III	IV
3 Capacity Development, Information Dissemination, and Phase-in / Phase-out Works																																																																															
3.1 Capacity development of Government Staff																																																																															
3.1.1 Capacity development at the Central Level (by CPMU)																																																																															
(1) Procurement of Contractor (with guidance to the contractor)	CPMU																																																																														
(2) Project orientation to CPMU, MBFP and Relevant Depts. of MARD	CPMU	NAFEC	4 (Consultant)																																																																												
(3) Project orientation to PPMU and DARD	CPMU	NAFEC	4 (Consultant)																																																																												
(4) Technical guidance to PAFEC	CPMU	NAFEC	4 (Consultant)																																																																												
(5) Training of and guidance to CPMU on Project Management	CPMU	NAFEC																																																																													
(6) Training of and guidance to PPMU on Project Management	CPMU	NAFEC																																																																													
(7) Guidance to MARD and CPMU on Benefit Sharing Mechanism and FDP Fund	CPMU	Consultant																																																																													
(8) Guidance to DARD and PPMU on Benefit Sharing Mechanism and FDP Fund	CPMU	Consultant																																																																													
(9) Guidance to CPMU on Monitoring and Evaluation	CPMU	NAFEC	4 (Consultant)																																																																												
(10) Monitoring of PAFEC's Performance (every six months)	CPMU	NAFEC																																																																													
3.1.2 Capacity development at the Provincial Level (by PPMUs)																																																																															
(1) Procurement of Contractor	ppmu																																																																														
(2) Project orientation to Relevant Depts of PPC/DARD and DPCs	PPMU	PAFEC	4 (CPMU/Consultant)																																																																												
(3) Project orientation to PFMBs, DECs, CPCs	PPMU	PAFEC																																																																													
(4) Training of PPMU																																																																															
(5) Training of PFMBs																																																																															
(6) Training of DEC and extension workers for facilitation of local people																																																																															
- Detailed planning stage	PPMU	PAFEC																																																																													
- Project implementation stage	PPMU	PAFEC																																																																													
3.1.3 Study tour																																																																															
(1) Overseas tours	CPMU	CPMU																																																																													
3.1.4 Review Meetings																																																																															
(1) Semi-annual Review meeting at central level	CPMU	CPMU	4 (Consultant)																																																																												
(2) Semi-annual Review meeting at provincial level	PPMU	PPMU	4 (Consultant)																																																																												
3.2 Capacity Development of Local Communities																																																																															
3.2.1 Information dissemination to local households in the new sites																																																																															
3.2.2 Information dissemination to local households in the SPL-3 sites																																																																															
3.2.3 Publication																																																																															
(1) Preparation of information dissemination materials	CPMU/PPMU	CPMU/PAFEC	4 (Consultant)																																																																												
- Project brief																																																																															
- Newsletter (Annual)																																																																															
- Environmental education booklet																																																																															
- Poster and DVD/VCD																																																																															
(2) Review and finalization of information dissemination materials	CPMU	Consultant																																																																													
(3) Distribution of information dissemination materials	PPMU	PAFEC	4 (PFMBs)																																																																												
3.2.4 Guidance and Training on Forest Management in the new sites																																																																															
(1) Consultation of long-term agreement and benefit sharing	PPMU	PAFEC	4 (PFMBs)																																																																												
(2) Facilitation of group organization for contract	PPMU	PAFEC	4 (PFMBs)																																																																												
(3) Preparation of a work plan under the sub-contract with PFMB	PPMU	PAFEC	4 (PFMBs)																																																																												
(4) Silvicultural techniques	PPMU	PFMBs	4 (PFMBs)																																																																												
(5) Development of rules on forest protection and management	PPMU	PAFEC	4 (PFMBs)																																																																												
(6) Guidance on forest management planning (only for those willing to enter into the long-term contract)	PPMU	PAFEC	4 (PFMBs)																																																																												
(7) Trial preparation of a forest management plan	PPMU	PAFEC	4 (PFMBs)																																																																												
(8) Bi-annual meetings with local communities	PPMU	PAFEC	4 (PFMBs)																																																																												
3.2.5 Guidance and Training on Forest Management in the SPL-3 sites																																																																															
(1) Consultation of long-term agreement and benefit sharing	PPMU	PAFEC	4 (PFMBs)																																																																												
(2) Facilitation of group organization for contract	PPMU	PAFEC	4 (PFMBs)																																																																												
(3) Preparation of a work plan under the sub-contract with PFMB	PPMU	PAFEC	4 (PFMBs)																																																																												
(4) Silvicultural techniques	PPMU	PFMBs	4 (PFMBs)																																																																												
(5) Development of rules on forest protection and management	PPMU	PAFEC	4 (PFMBs)																																																																												
(6) Guidance on forest management planning (only for those willing to enter into the long-term contract)	PPMU	PAFEC	4 (PFMBs)																																																																												
(7) Trial preparation of a forest management plan	PPMU	PAFEC	4 (PFMBs)																																																																												
(8) Bi-annual meetings with local communities	PPMU	PAFEC	4 (PFMBs)																																																																												
3.3 Phase-out/ Phase-in works																																																																															
3.3.1 Facilitation of hand-over of forest ownership from PPMU to PFMB	CPMU	Consultant	4 (PPMU)																																																																												
3.3.2 Guidance to PPMUs, PFMBs and PAFECs for the new sites																																																																															
3.3.3 Guidance to PPMUs, PFMBs and PAFECs for the SPL-3 sites																																																																															
3.3.4 Guidance to local communities in the new sites																																																																															
3.3.4 Guidance to local communities in the SPL-3 sites																																																																															

