

4.3.11 Kaliganj Upazilla

General description: Kaliganj Upazilla is situated in the north-east of Dhaka Metropolitan area (DMA). It is surrounded by Balu River in the east and Shitalakhaya River in the west. In the south it is Rugganj Upzia and in the north Gazipur Sadar Upzia. The total administrative area is 15,878 hectare (39,237 acre or 158.79 Sq. Km.). In this Upzia, about 32% of the land belongs to RAJUK administrative area. It has Upzia headquarter at the river bank of Shitalakhaya. The population has increased from 143,348 inhabitants in 1981 to 175,915 inhabitants in 1991 and to 239,527 inhabitants in 2001. The population density was about 15 persons per hectare in 2001. The built up area of this Upzia is 9.6% of the total land area.

Table 4.3-11 shows land use composition and Figure 4.3-11 show the existing land use map of Kaliganj Upazilla.

Table 4.3-11 Land Use Composition in Kaliganj Upazilla

Land use category	Area (ha)	Ratio (%)	Land use category	Area (ha)	Ratio (%)
Residential Area	2,022.16	9.00	Park/Play Ground/Urban Green area	0.00	0.00
Commercial	23.98	0.11	Restricted Area /Brick Field	18.20	0.08
Industrial Area	0.00	0.00	Cultivated Land/Open Space/Forest	4,717.28	21.00
Mixed use area	0.37	0.00	Swamp/Marsh/Char/Island/Water Bodies	321.50	1.43
Public facilities	44.35	0.20	Not Available	15,248.10	67.88
Road/Railways	66.38	0.30			

Major characteristics of the land use in Kaliganj Upazilla are summarized below.

Agricultural area: This area is mostly dominant by agricultural land use with the total area of 4,717 ha. Besides this, about 321 ha is char/island/swamp area. In the dry season, some seasonal crops are grown in these char/island area.

Housing area: About 2,022 ha (9.0% of total land area) is occupied by the housing area. Most of the residential areas are rural home stead area with low and middle income people. RAJUK's Purbachal new town is located partially in this Upzia. Along with Purbachal new town, some real estate developers are now developing new residential areas.

Commercial area: It has 0.11% (23.98 ha) of commercial activity. Most of commercial areas are located along the Dhaka – Kaliganj road in the Kaliganj Upzia head quarter area.

Transport Network: Dhaka By-pass road, a national highway, and Dhaka-Kaliganj regional highway pass through this Upzia. About 0.30% (66.3 ha) land area belongs to road space. This area is connected by Dhaka – Chittagong railway line. Arikhola railway station is adjacent to Kaliganj Upzia head quarter. This railway line connect the people of Kaliganj with Dhaka and Bhairab and then up to Chittagong and Sylhet. The Shitalakhaya River is used as water ways by local people by using traditional boat in that area.

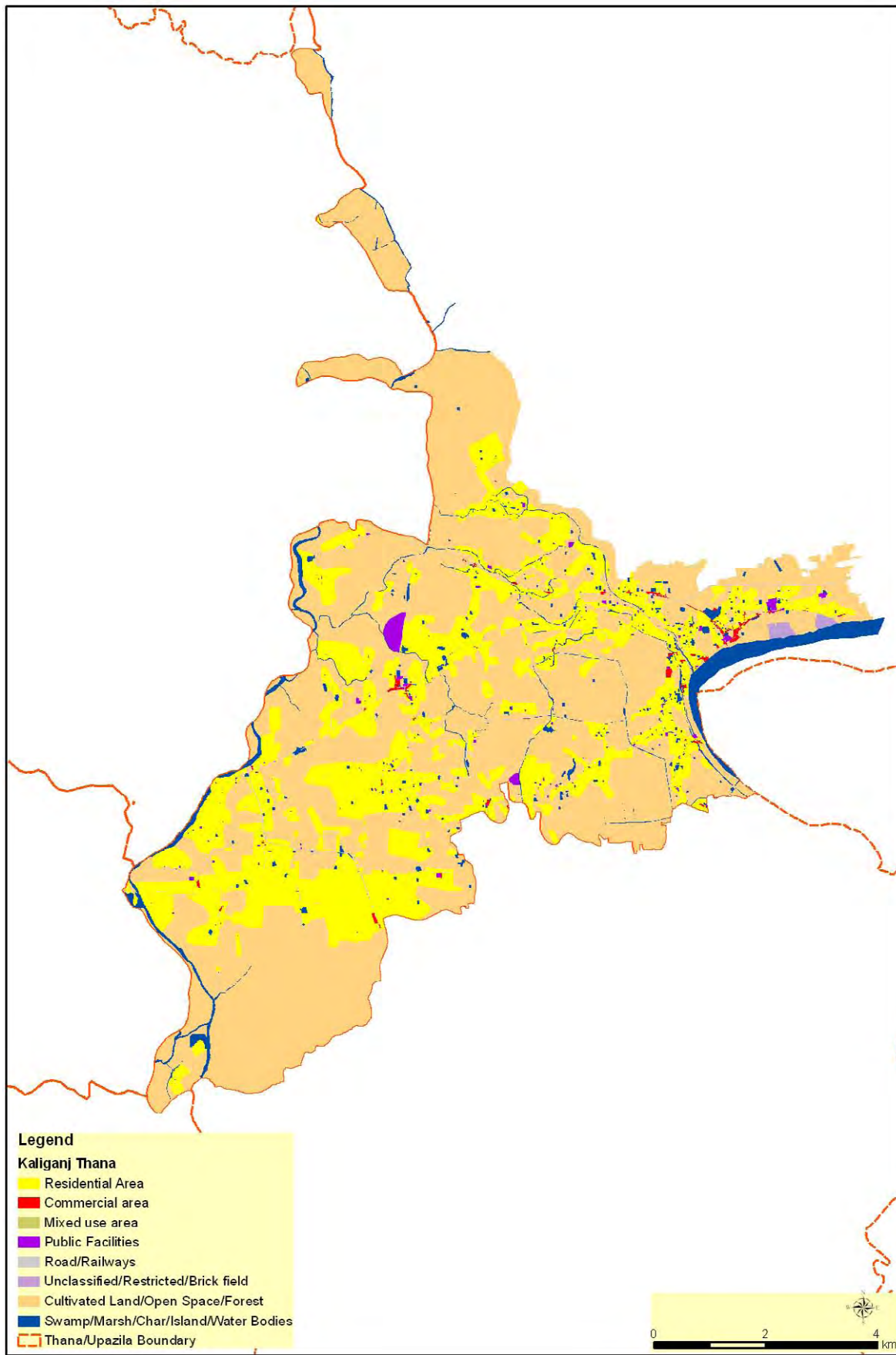


Figure 4.3-11 Existing Land Use in Keraniganj Upzia (Year 2009)

4.3.12 Kamrangir Char Thana

General description: Kamrangir Char Thana is situated in the south of DCC. It is surrounded by Buri Ganga River in the west and in the south. It consists of only one union named Sultanganj Union. The total administrative area is 368 hectare (909 acre, 3.68 Sq. Km.). The population was 143,208 inhabitants and the population density was 389 persons per hectare in 2001. The built up area is 69.4% of total land area.

Table 4.3-12 shows land use composition and Figure 4.3-12 show the existing land use map of Kamrangir Char Thana.

Table 4.3-12 Land Use Composition in Kamrangir Char Thana

Land use category	Area (ha)	Ratio (%)	Land use category	Area (ha)	Ratio (%)
Residential Area	142.93	63.07	Park/Play Ground/Urban Green area	0.00	0.00
Commercial	0.11	0.05	Restricted Area /Brick Field	0.00	0.00
Industrial Area	1.66	0.73	Cultivated Land/Open Space/Forest	57.79	25.50
Mixed use area	2.18	0.96	Swamp/Marsh/Char/Island/Water Bodies	11.46	5.06
Public facilities	1.28	0.57	Not Available	0.00	0.00
Road/Railways	9.22	4.07			

Major characteristics of the land use in Kamrangir Char Thana are summarized below.

Agricultural area: About 57.8 ha (25.5%) belongs to agricultural activity. Besides this about 11.5 ha (5.1%) is occupied by water body, the branch of Burgi Ganga River. In the dry season, some seasonal crops are grown in swamp area.

Industrial area: A small number of industries are located at the peripheral area in this Thana.

Housing area: About 142.9 ha (63.1% of total land area) is occupied by the housing area. Administratively, it is not included in the DCC and separated by small branch of Burhi Ganga River from DDC. This area is developed as high density residential area for lower income group.

Commercial area: Commercial activities are very few in this Thana with only 0.1 ha.

Transport Network: In this area all are local and feeder roads.

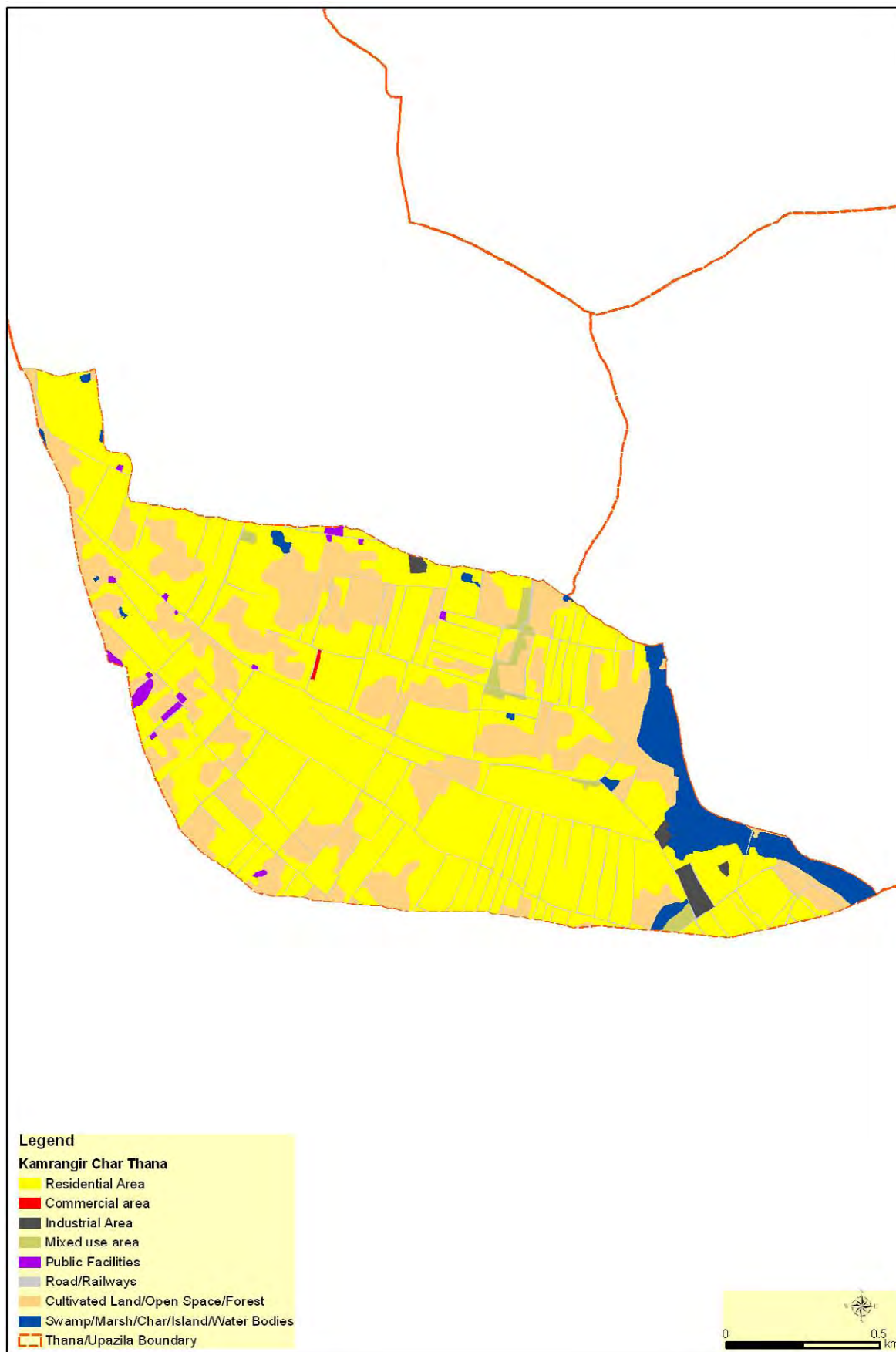


Figure 4.3-12 Existing Land Use in Kamrangir Char Thana (Year 2009)

4.3.13 Keraniganj Upzia

General description: Keraniganj Upzia is situated in the west of Dhaka Metropolitan Area (DMA) and west of Sonargaon Upzia. The total administrative area is 16,687 hectare (41,234.48 acre or 166.87 Sq. Km.). Some industrial and commercial area is situated by the river bank of the Buriganga. The population was 361,625.inhabitants in 1981, 530,174.inhabitants in 1991 and 603,114 inhabitants in 2001. The population density was about 36 persons per hectare in 2001. The built up area of this Upzia is 21.4% of total land area.

Table 4.3-13 shows land use composition and Figure 4.3-13 show the existing land use map of Keraniganj Upzia.

Table 4.3-13 Land use Composition in Keraniganj Upzia

Land use category	Area (ha)	Ratio (%)	Land use category	Area (ha)	Ratio (%)
Residential Area	3,583.53	18.66	Park/Play Ground/Urban Green area	0.02	0.00
Commercial	86.25	0.45	Restricted Area /Brick Field	453.42	2.36
Industrial Area	128.59	0.67	Cultivated Land/Open Space/Forest	11,903.62	62.00
Mixed use area	24.83	0.13	Swamp/Marsh/Char/Island/Water Bodies	2,237.72	11.65
Public facilities	69.56	0.36	Not Available	497.60	2.59
Road/Railways	215.54	1.12			

Major characteristics of the land use in Keraniganj Upzia are summarized below.

Brick Field: There are many brick fields in this Upzia with the total area of 453 ha.

Agricultural area: There are 11,903.6 ha of agricultural land, which occupies 62% of the total lands area. Another 2,237.7 ha is occupied by water body/char/island/swamp area. In the dry season, some seasonal crops are grown in these char/island/swamp areas.

Industrial area: In the areas along Dhaka-Mawa highway and Dhaka-Keraniganj road and the river bank of Buri Ganga, some industrial development has been occurred, with the total land area of 128.6 ha.

Housing area: About 18.6% (3,583.5 ha) of total land area is occupied by the housing area. Along after the industrial area by the river bank of Buriganga, by the road side of Dhaka-Mawa road and Dhaka-Keraniganj road and within the growth centers, some sub urban residential areas with middle income group residential areas are located here. Other than that area, all are the rural home stead area with low income people. There is a housing project named “Jheelmeel Abashik Prokolpo” initiated by RAJUK is still to be developed. New planned private housing areas are being developed by the real estate developers recently in this area. Some of private housing projects are: BDC South Town project and Bashundhara River View project

Commercial area: It has 0.45% (86.25 ha) of commercial activity area in respect of total land area. It is very insignificant in respect to other land use category. By the river side of Buriganga and by the

Dhaka-Keraniganj road side area, some commercial activity is situated here.

Transport Network: As Dhaka-Mawa highway passes through this Upzia area, this area is always congested by Inter-district traffic. Regional highways are the roads towards Rohitpur via Keraniganj and Keraniganj to Kalatia are the major regional highways. Other those roads, all are feeder roads. Road network on this Upzia is about 1.12% (215.54 ha) of the total land use.

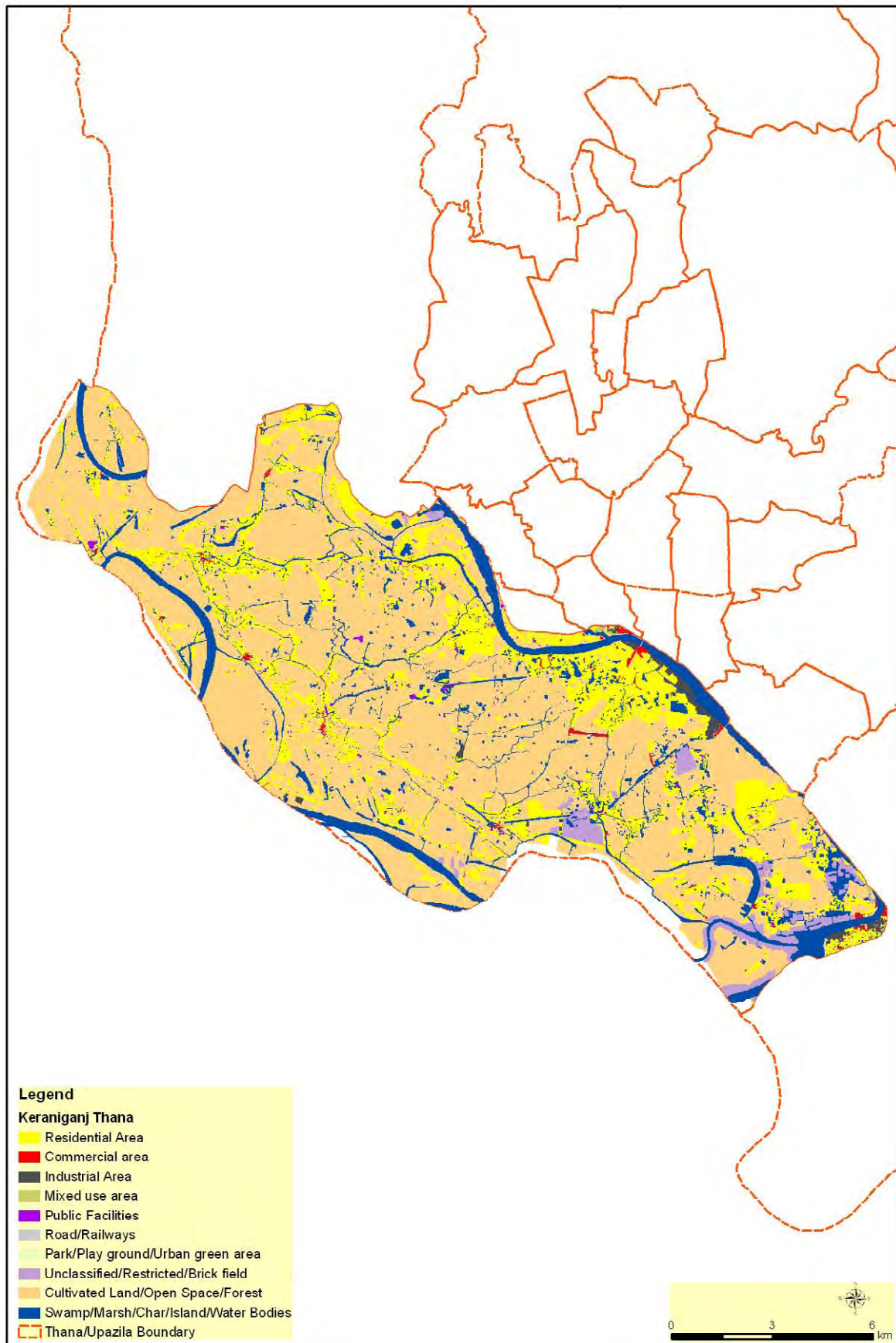


Figure 4.3-13 Existing Land Use in Keraniganj Upzia (Year 2009)

4.3.14 Khilgaon Thana

General description: This Thana is situated east of Dhaka City Corporation area. This Thana is consists of DCC ward# 22, 23, 24, 25 and 26. The north-eastern side is surrounded by the Balu River. The total administrative area is 757.16 hectare (1871 acre, 7.57 Sq. Km.). Some industrial and commercial area is situated by the road side of DIT road and Atish Dipankar road area. The population of this area in the census 2001 was 336,895. The population density in 2001 was 445 persons per hectare. In the census year 1991, this Thana was not existed within that time. So it is a new Thana established after the census year 1991 within Dhaka Metropolitan area (DMA). The built up area of this Thana is 45.81% of total land area.

Table 4.3-14 shows land use composition by category and Figure 4.3-14 shows land use map in 2009.

Table 4.3-14 Land use Composition

Land use category	Area (ha)	Ratio (%)	Land use category	Area (ha)	Ratio (%)
Residential Area	608.33	35.46	Park/Play Ground/Urban Green area	1.81	0.11
Commercial	33.52	1.95	Restricted Area /Brick Field	5.56	0.32
Industrial Area	3.38	0.20	Cultivated Land/Open Space/Forest	600.11	34.98
Mixed use area	34.68	2.02	Swamp/Marsh/Char/Island/Water Bodies	323.96	18.88
Public facilities	20.95	1.22	Not Available	0.00	0.00
Road/Railways	83.19	4.85			

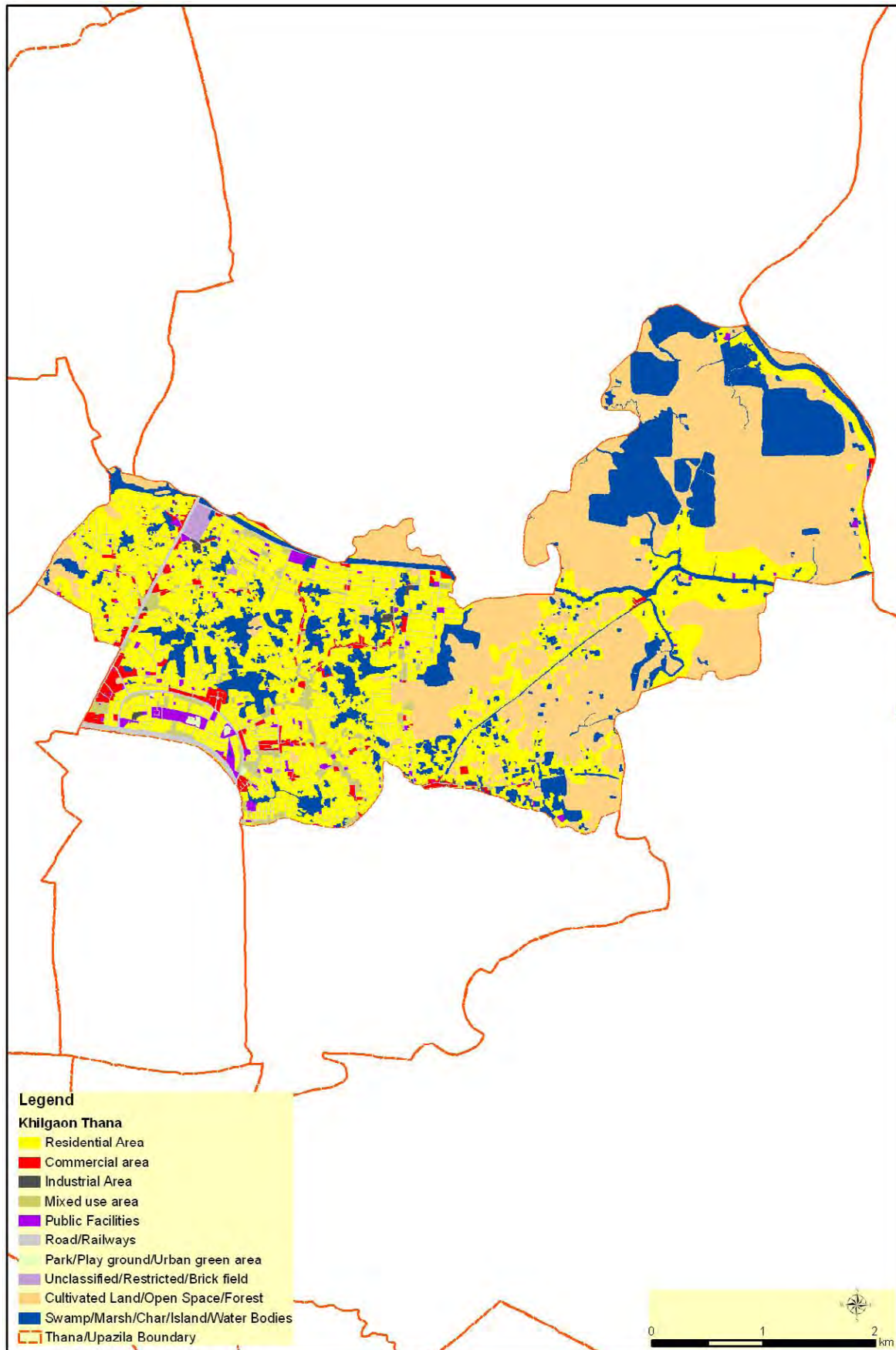


Figure 4.3-14 Existing Land Use in Khilgaon Thana (Year 2009)

4.3.15 Kotwali Thana

General description: This Thana is situated south of Dhaka City Corporation (DCC) area. This Thana consists of DCC ward# 66 (partly), 67 (partly), 68, 69, 70, 71, 72, 73. The total administrative area is 193.03 hectare (477 acre, 1.93 Sq. Km.). Some industrial and major commercial areas are situated by the major road side area within this Thana. This Thana is surrounded by Buri Ganga River in the south. The population of this area in the census 2001 was 253,558 and in the census 1991, it was 210,504. In 1981, the population was 180,427. In ten years interval from 1991 to 2001 the population has been increased up to 43,054. The increase of population occurs day by day within this Thana area. The population density in 2001 was about 1314 persons per hectare. The built up area of this Thana is 96.75% of total land area.

Table 4.3-15 shows land use composition by category and Figure 4.3-15 shows land use map in 2009.

Table 4.3-15 Land use composition in Kotwali Thana

Land use category	Area (ha)	Ratio (%)	Land use category	Area (ha)	Ratio (%)
Residential Area	46.52	20.00	Park/Play Ground/Urban Green area	0.18	0.08
Commercial	60.59	26.04	Restricted Area /Brick Field	0.76	0.33
Industrial Area	0.61	0.26	Cultivated Land/Open Space/Forest	2.43	1.04
Mixed use area	64.38	27.67	Swamp/Marsh/Char/Island/Water Bodies	4.37	1.88
Public facilities	21.03	9.04	Not Available	0.00	0.00
Road/Railways	31.78	13.66			

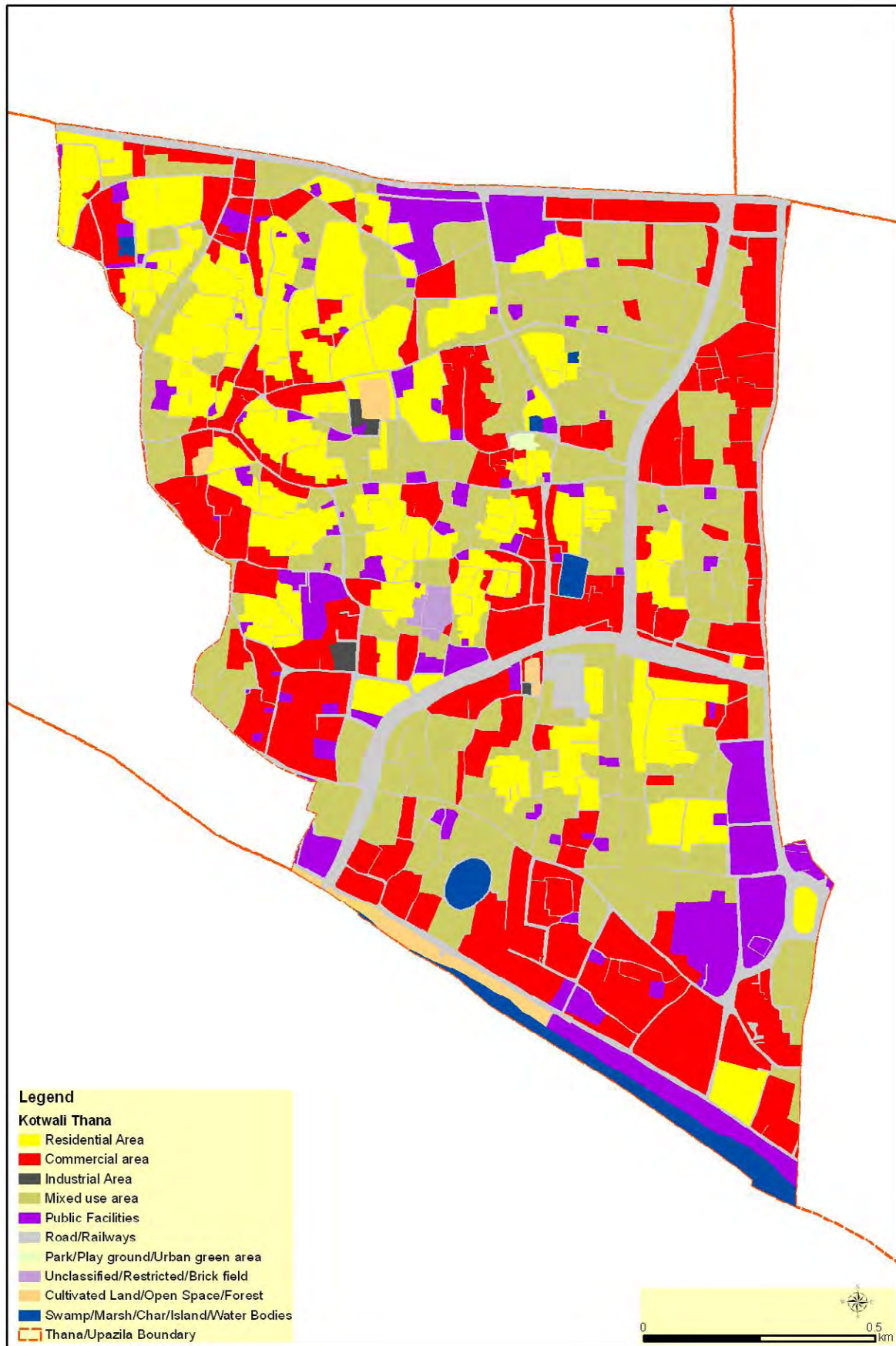


Figure 4.3-15 Existing Land Use in Kotwali Thana (Year 2009)

4.3.16 Lalbag Thana

General description: This Thana is situated in the southern side of DCC area. This Thana consists of DCC ward# 56(partly), 59, 60, 61, 62, 63, 64, 65, 66(partly) and 67(partly). The total administrative area is 408.32 hectare (1009 acre, 4.08 Sq. Km.). Some industrial and commercial area is situated by the road side of some feeder roads of this area. This Thana is surrounded by the Buri Ganga River in the south. The population of this area in the census 2001 was 346,204 and in the census 1991, it was 401,387. In 1981, the population was 307,843. In ten years interval from 1991 to 2001 the population has been decreased up to 55,183 as the area of this Thana reduces from 9.14 sq km to 4.08 sq km. The population density in this Thana in 2001 was about 848 persons per hectare. The built up area of this Thana is 88.14% of total land area.

Table 4.3-16 shows land use composition by category and Figure 4.3-16 shows land use map in 2009.

Table 4.3-16 Land use composition in Lalbag Thana

Land use category	Area (ha)	Ratio (%)	Land use category	Area (ha)	Ratio (%)
Residential Area	162.13	43.89	Park/Play Ground/Urban Green area	7.66	2.07
Commercial	25.41	6.88	Restricted Area /Brick Field	28.68	7.76
Industrial Area	5.96	1.61	Cultivated Land/Open Space/Forest	6.86	1.86
Mixed use area	44.00	11.91	Swamp/Marsh/Char/Island/Water Bodies	8.24	2.23
Public facilities	42.11	11.40	Not Available	0.00	0.00
Road/Railways	38.35	10.38			

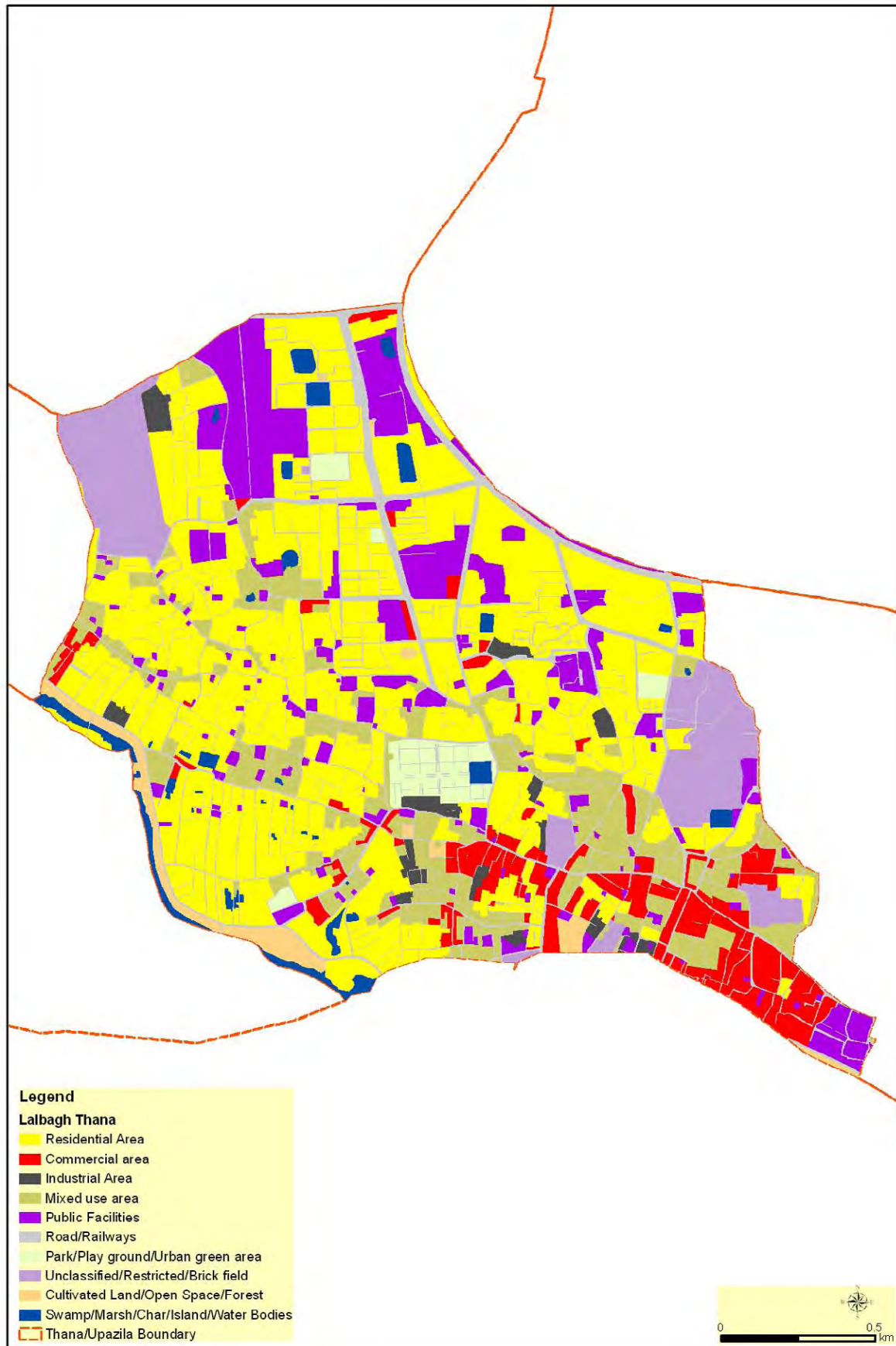


Figure 4.3-16 Existing Land Use in Lalbagh Thana (Year 2009)

4.3.17 Mirpur Thana

General description: This Thana is situated middle-west of Dhaka City Corporation (DCC) Area. This Thana consists of DCC ward# 7, 8, 9, 10, 11, 12, 13 and 14(partly). The total administrative area is 1422.47 hectare (3515 acre, 14.22 Sq. Km.). The Mirpur road, Darus Salam road, Mazar road, Mirpur-1 to Mirpur-2 road and Rokeya Sarani pass through this area. Some industrial and commercial area is situated by the road side of these roads. The population of this area in the census 2001 was 551,167 and in the census 1991, it was 641,630. In 1981, the population was 332,231. In ten years interval from 1991 to 2001 the population has been decreased up to 90,463 as the area of this Thana reduced from 58.66 sq km to 14.22 sq km. The population density in 2001 was about 387 persons per hectare. The built up area of this Thana is 78.91% of total land area.

Table 4.3-17 shows land use composition by category and Figure 4.3-17 shows land use map in 2009.

Table 4.3-17 Land Use Composition in Lalbag Thana

Land use category	Area (ha)	Ratio (%)	Land use category	Area (ha)	Ratio (%)
Residential Area	859.79	55.30	Park/Play Ground/Urban Green area	9.38	0.60
Commercial	31.52	2.03	Restricted Area /Brick Field	20.91	1.35
Industrial Area	37.35	2.40	Cultivated Land/Open Space/Forest	168.56	10.48
Mixed use area	26.73	1.72	Swamp/Marsh/Char/Island/Water Bodies	138.23	8.89
Public facilities	124.57	8.01	Not Available	0.00	0.00
Road/Railways	137.59	8.85			

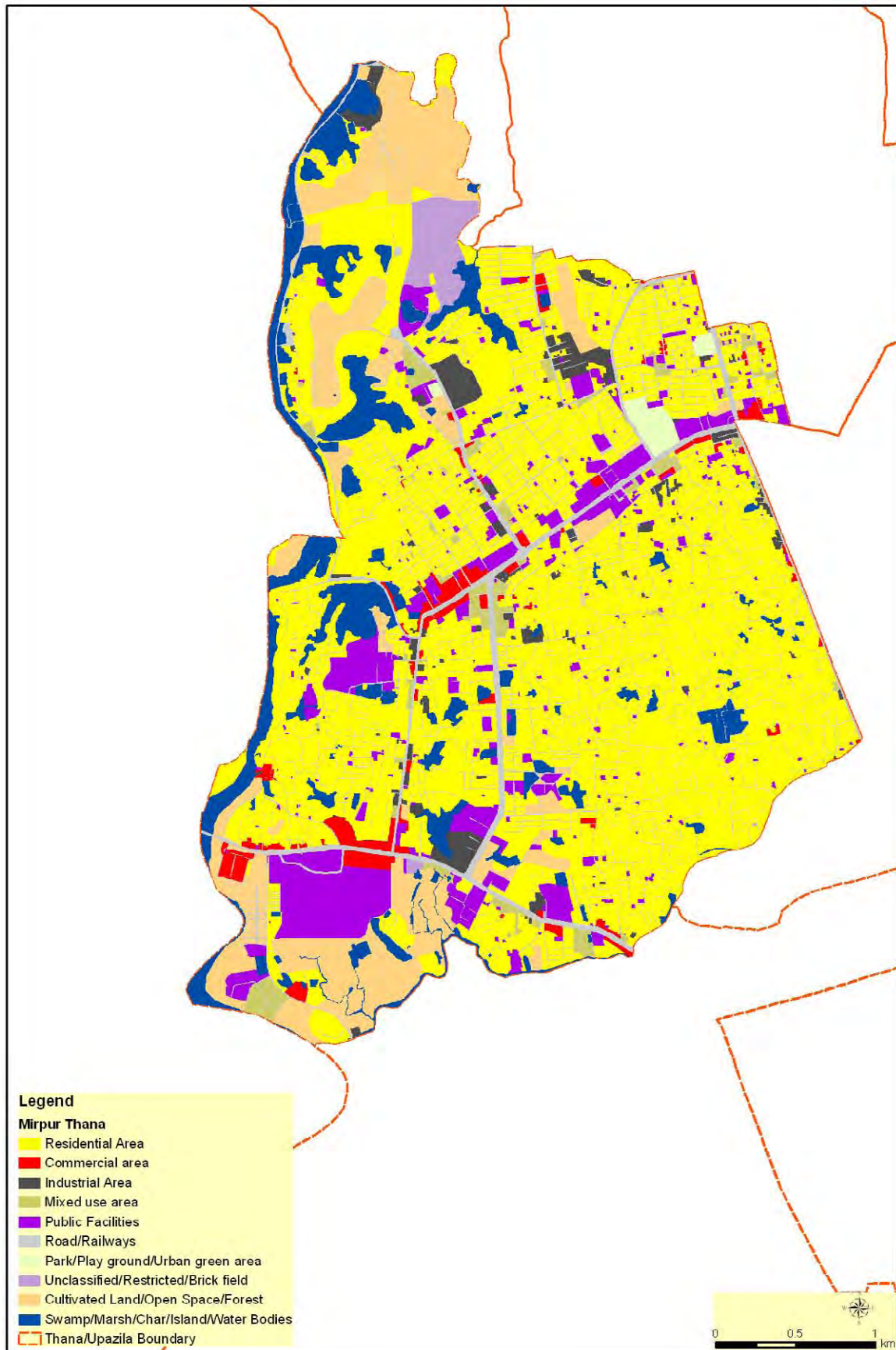


Figure 4.3-17 Existing Land Use in Mirpur Thana (Year 2009)

4.3.18 Mohammadpur Thana

General description: This Thana is situated west of Dhaka City Corporation area. This Thana consists of DCC ward# 41, 42, 43, 44, 45, 46, 47(partly) and 51(partly). The total administrative area is 1213.65 hectare (2999 acre, 12.14 Sq. Km.). Some industrial and commercial area is situated by the road side area within this Thana. The population of this area in the census 2001 was 456,058 and in the census 1991, it was 316,203. In 1981, the population was 219,609. In ten years interval from 1991 to 2001 the population has been increased up to 139,855. The increase of population occurs day by day in this Thana area. The population density in 2001 was about 376 persons per hectare. The built up area of this Thana is 68.11% of total land area.

Table 4.3-18 shows land use composition by category and Figure 4.3-18 shows land use map in 2009.

Table 4.3-18 Land Use Composition in Lalbag Thana

Land use category	Area (ha)	Ratio (%)	Land use category	Area (ha)	Ratio (%)
Residential Area	470.05	43.48	Park/Play Ground/Urban Green area	7.55	0.70
Commercial	12.36	1.14	Restricted Area /Brick Field	3.94	0.36
Industrial Area	5.53	0.51	Cultivated Land/Open Space/Forest	183.07	16.93
Mixed use area	63.81	5.90	Swamp/Marsh/Char/Island/Water Bodies	157.61	14.58
Public facilities	73.05	6.76	Not Available	0.00	0.00
Road/Railways	104.05	9.62			

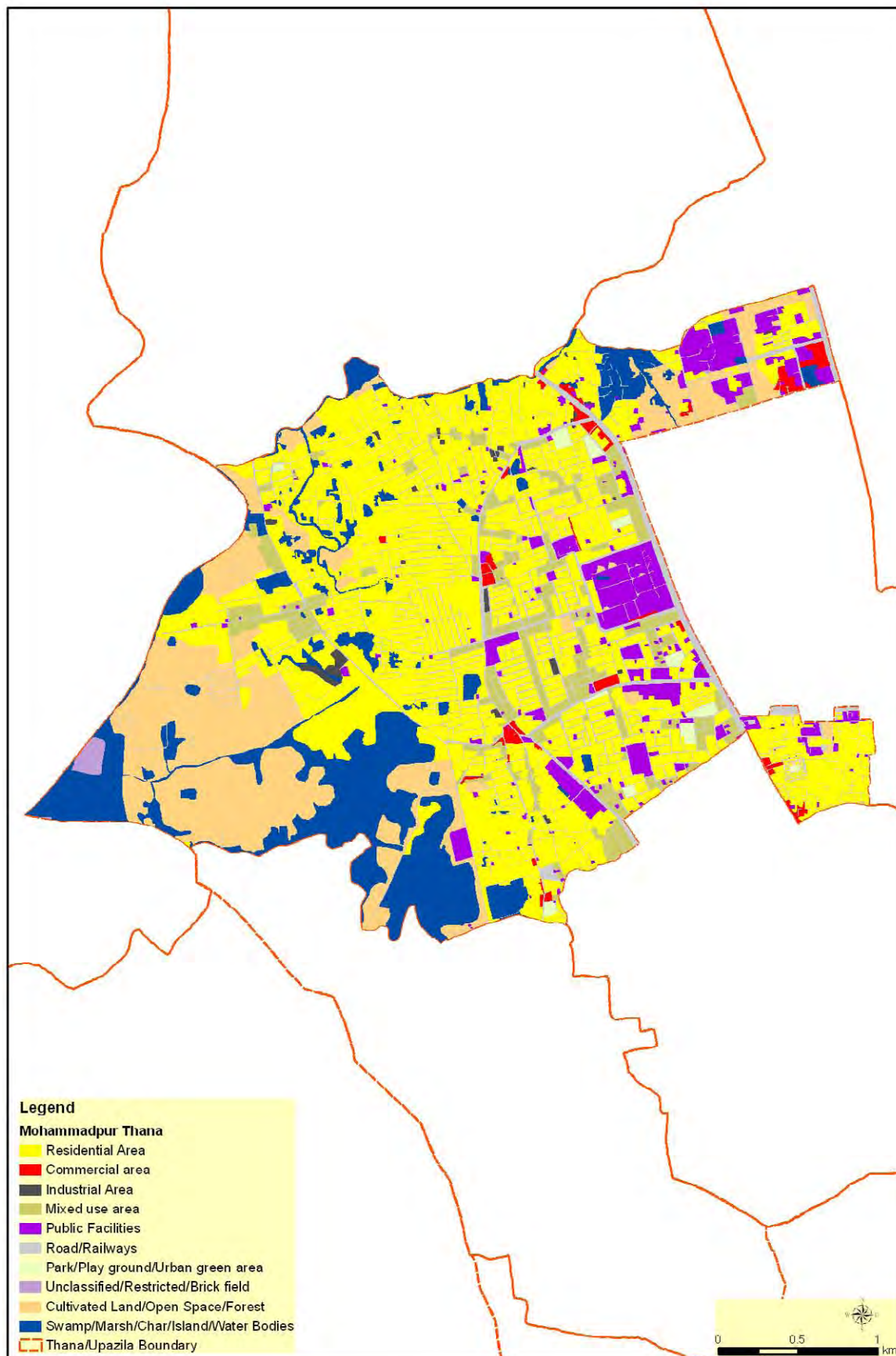


Figure 4.3-18 Existing Land Use in Mohammadpur Thana (Year 2009)

4.3.19 Motijheel Thana

General description: This Thana is situated south-eastern part of Dhaka City Corporation (DCC) area. This Thana consists of DCC ward# 31, 32, 33, 34, 35 and 36. The total administrative area is 494.52 hectare (1222 acre, 4.95 Sq. Km.). The population of this area in the census 2001 was 269,628 and in the census 1991, it was 223,676. In 1981, the population was 180,694. In ten years interval from 1991 to 2001 the population has been increased up to 45,952. The increase of population occurs day by day within this Thana area. The population density in 2001 was about 545 persons per hectare. The built up area of this Thana is 89.76% of total land area.

Table 4.3-19 shows land use composition by category and Figure 4.3-19 shows land use map in 2009.

Table 4.3-19 Land use Composition in Motijheel Thana

Land use category	Area (ha)	Ratio (%)	Land use category	Area (ha)	Ratio (%)
Residential Area	194.94	40.16	Park/Play Ground/Urban Green area	13.81	2.84
Commercial	31.25	6.44	Restricted Area /Brick Field	39.39	8.11
Industrial Area	0.89	0.18	Cultivated Land/Open Space/Forest	4.76	0.98
Mixed use area	46.39	9.56	Swamp/Marsh/Char/Island/Water Bodies	5.57	1.15
Public facilities	70.99	14.63	Not Available	0.00	0.00
Road/Railways	77.44	15.95			

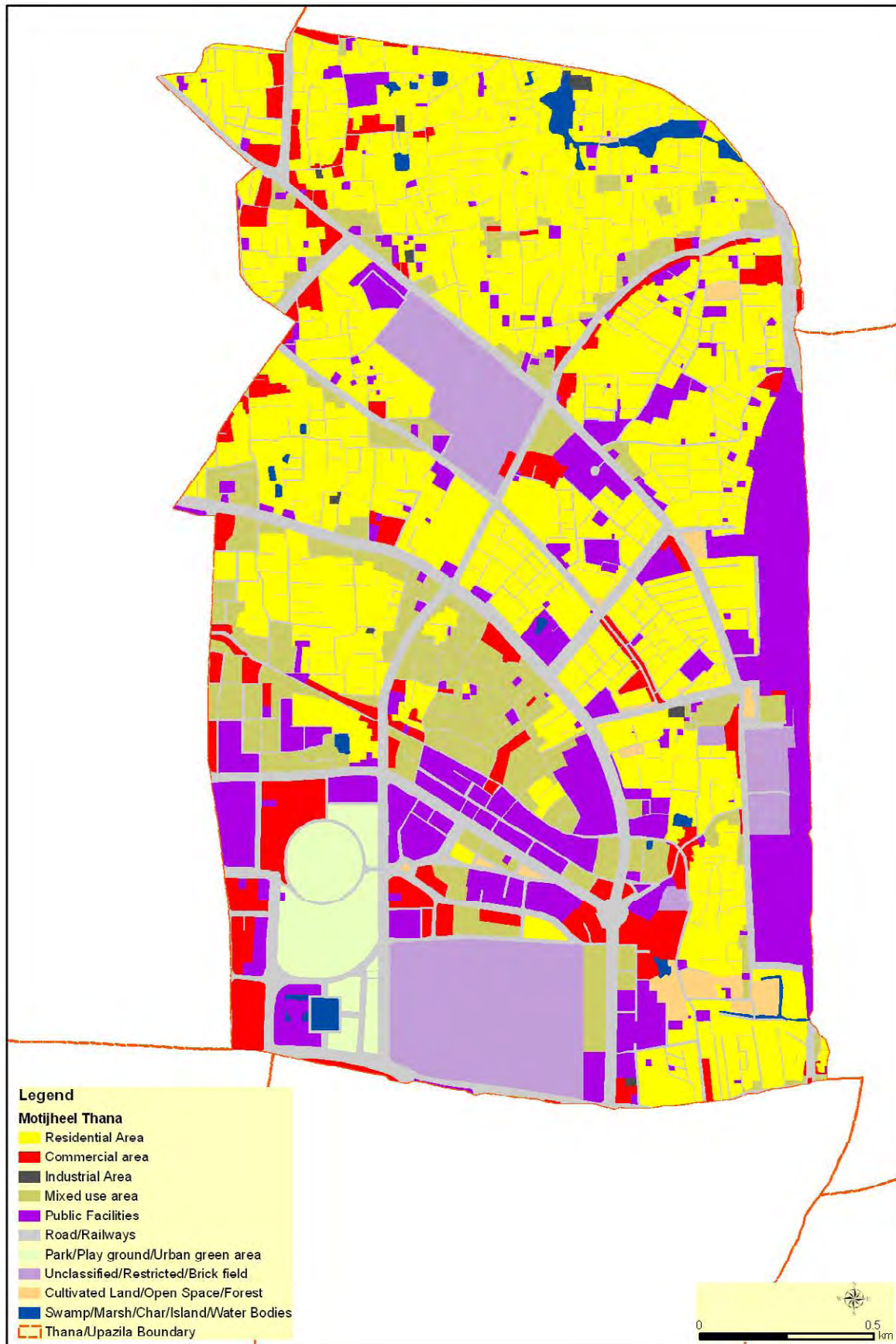


Figure 4.3-19 Existing Land Use in Motijheel Thana (Year 2009)

4.3.20 Narayanganj Sadar Upzia

General description: This Upzia is situated south-east of Dhaka Metropolitan area (DMA). It is the district sadar Upzia. It has district headquarters and two Pourashavas, one is Narayanganj pourashava and the other is recently established Siddhirganj pourashava. It is the nearest district headquarters from DMA. Other Upzias of this District Sadar Upzia are situated in the east and north-east direction. Narayanganj grew as a centre for commercial and industrial activities as there were so many establishments of Jute and Hosiery mills. It is an important river port in Bangladesh. It is connected by three types of transport ways as Rail, Road and River. It has a good communication system with rail and river ways regarding the freight movement. Many industries are mainly situated by the river bank of the Shitolakhya. The total area of this Upzia is about 10,075.00 hectare (24,895.87 acre, 100.75 Sq. Km.). This Upzia is in a triangular shape surrounded by Buriganga and Dhaleshwari River in the west and by Shitalakhhaya River in the east. Both Narayanganj and Siddirganj pourashava is situated by the river bank of Shitalakhhaya. The population of this area in the census 2001 was 882,971 and in the census 1991, it was 604,561. In 1981, the population was 423,040. In ten years interval from 1991 to 2001 the population has been increased up to 278,410. As it is an industrial and commercial area, increase of population occurs day by day. The population density in 2001 was about 88 persons per hectare. The built up area of this Upzia is 44.66% of total land area.

Table 4.3-20 shows land use composition by category and Figure 4.3-20 shows land use map in 2009.

Table 4.3-20 Land use Composition in Narayanganj Sadar Upzia

Land use category	Area (ha)	Ratio (%)	Land use category	Area (ha)	Ratio (%)
Residential Area	3,296.28	32.96	Park/Play Ground/Urban Green area	4.27	0.04
Commercial	157.09	1.57	Restricted Area /Brick Field	237.83	2.38
Industrial Area	430.70	4.31	Cultivated Land/Open Space/Forest	3,208.11	32.08
Mixed use area	115.57	1.16	Swamp/Marsh/Char/Island/Water Bodies	1,844.97	18.45
Public facilities	191.90	1.92	Not Available	244.80	2.45
Road/Railways	269.92	2.70			

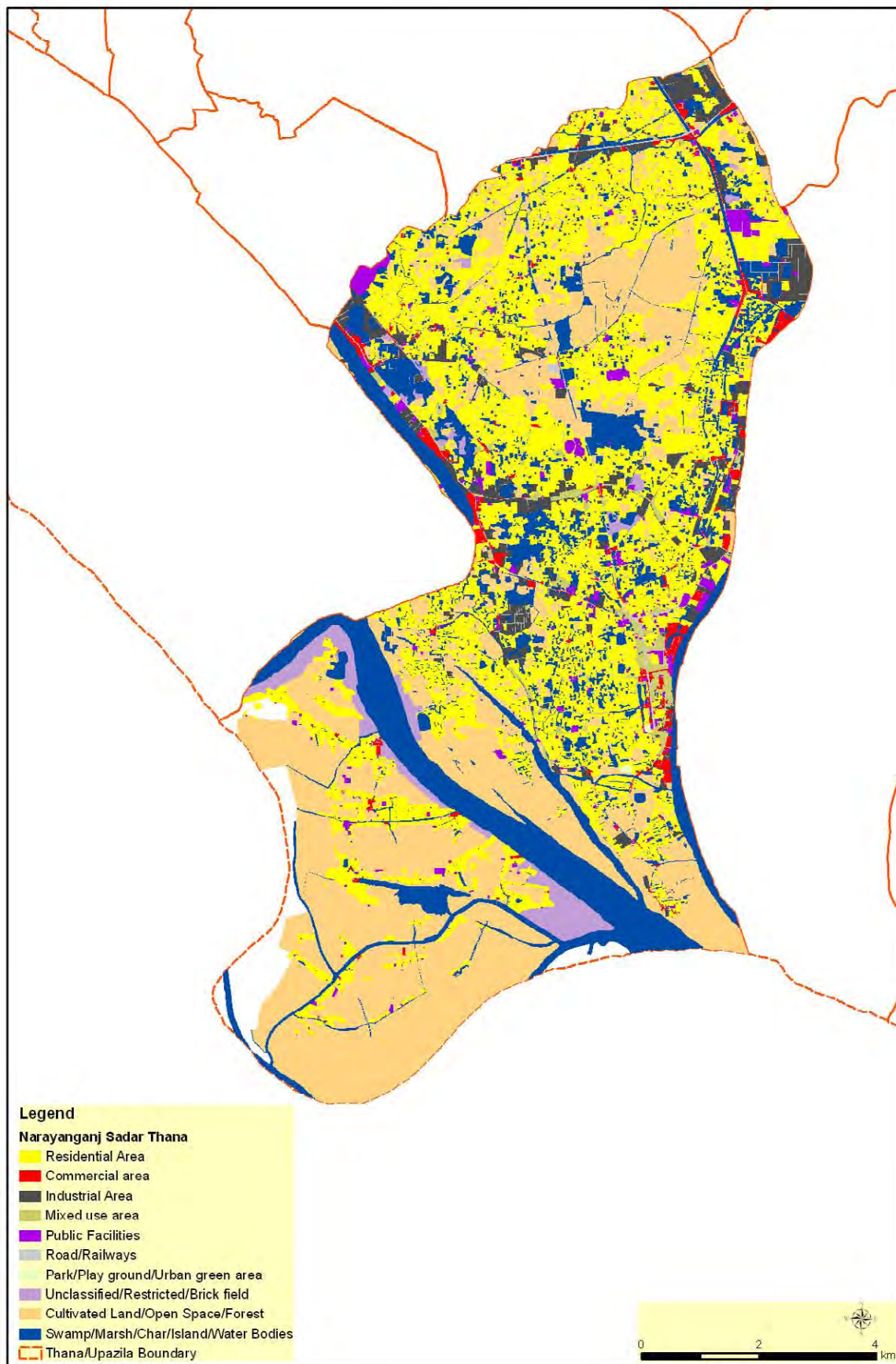


Figure 4.3-20 Existing Land Use in Narayanganj Sadar Upzia (Year 2009)

4.3.21 Pallabi Thana

General description: Pallabi Thana is situated in the north-west of DCC. This Thana consists of ward # 2, 3, 5, 6 and 15(partly). The total administrative area is 1,795.59 hectare (4,437 acre or 17.96 Sq. Km.). Some industrial and commercial area is situated along major roads. The population was 431,257 inhabitants and the population density was about 240 persons per hectare in 2001. This is a new Thana established after the census year 1991. The total built up area amount to 56.49% of total land area.

Table 4.3-21 shows land use composition by category and Figure 4.3-21 shows land use map in 2009.

Table 4.3-21 Land use composition in Pallabi Thana

Land use category	Area (ha)	Ratio (%)	Land use category	Area (ha)	Ratio (%)
Residential Area	364.27	39.40	Park/Play Ground/Urban Green area	1.08	0.12
Commercial	11.97	1.29	Restricted Area /Brick Field	144.98	15.68
Industrial Area	33.84	3.66	Cultivated Land/Open Space/Forest	58.59	6.34
Mixed use area	15.89	1.72	Swamp/Marsh/Char/Island/Water Bodies	198.61	21.48
Public facilities	23.66	2.56	Not Available	0.00	0.00
Road/Railways	71.53	7.74			

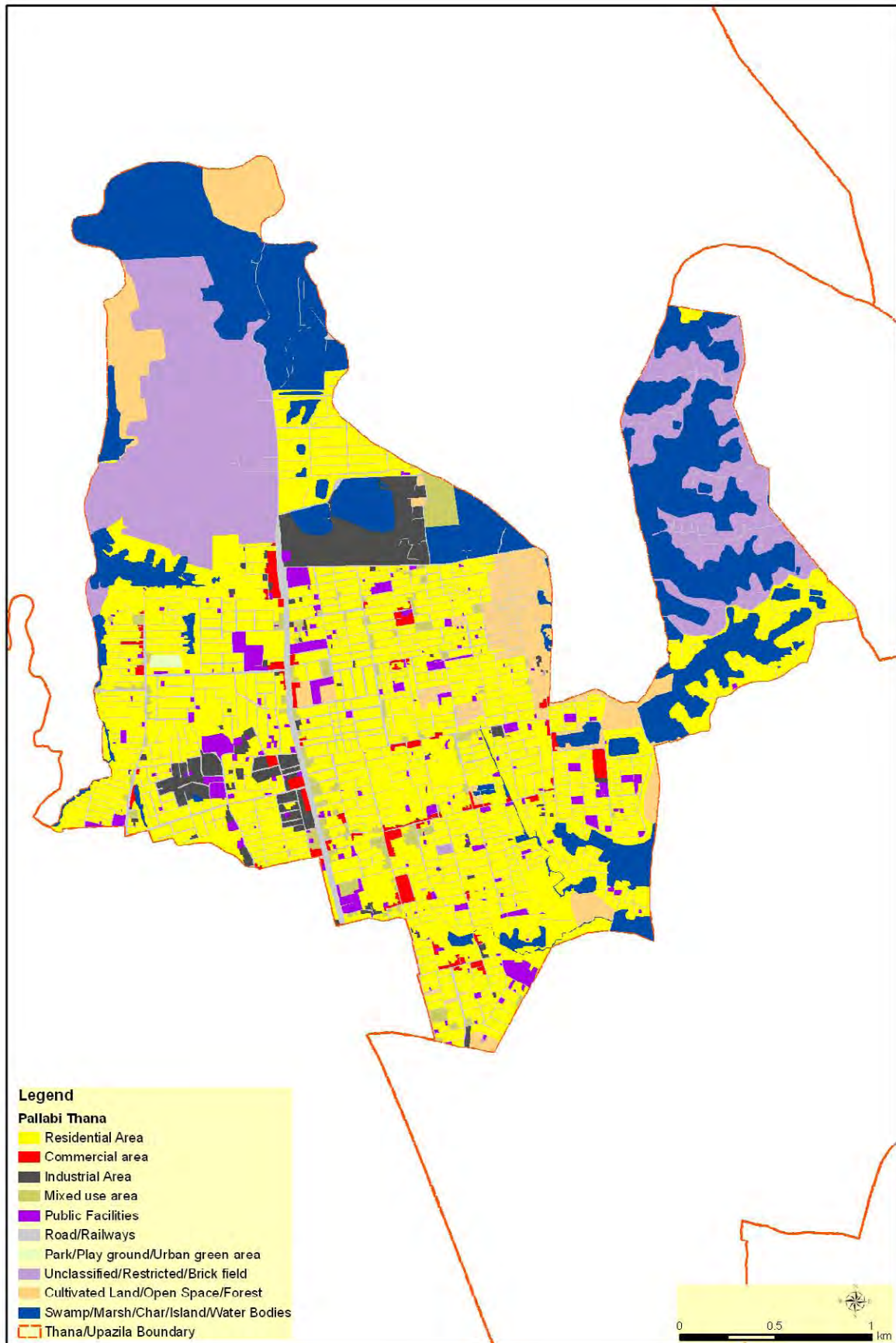


Figure 4.3-21 Existing Land Use in Pallabi Thana (Year 2009)

4.3.22 Ramna Thana

General description: This Thana is situated middle of Dhaka City Corporation (DCC) area. This Thana consists of DCC ward# 53, 54, 55, 56(partly) and 57. The total administrative area is 770.92 hectare (1905 acre, 7.71 Sq. Km.). It has Upzia headquarter and Kadam Rasul pourashava area within this Upzia area. The Dhaka-Chittagong and Dhaka –Sylhet highways passes through this area. Some industrial and commercial activity is situated by the road side of DIT road and other major roads within this Thana. The population of this area in the census 2001 was 257,288 and in the census 1991, it was 195,167. In 1981, the population was 104,384. In ten years interval from 1991 to 2001 the population has been increased up to 62,121. The increase of population occurs day by day in that Thana area. The population density in 2001 was about 334 persons per hectare. The built up area of this Thana is 85.06% of total land area.

Table 4.3-22 shows land use composition by category and Figure 4.3-22 shows land use map in 2009.

Table 4.3-22 Land use composition in Ramna Thana

Land use category	Area (ha)	Ratio (%)	Land use category	Area (ha)	Ratio (%)
Residential Area	200.35	27.83	Park/Play Ground/Urban Green area	67.17	9.33
Commercial	29.09	4.04	Restricted Area /Brick Field	52.32	7.27
Industrial Area	1.86	0.26	Cultivated Land/Open Space/Forest	23.36	3.25
Mixed use area	34.46	4.79	Swamp/Marsh/Char/Island/Water Bodies	31.86	4.43
Public facilities	174.06	24.18	Not Available	0.00	0.00
Road/Railways	105.30	14.63			

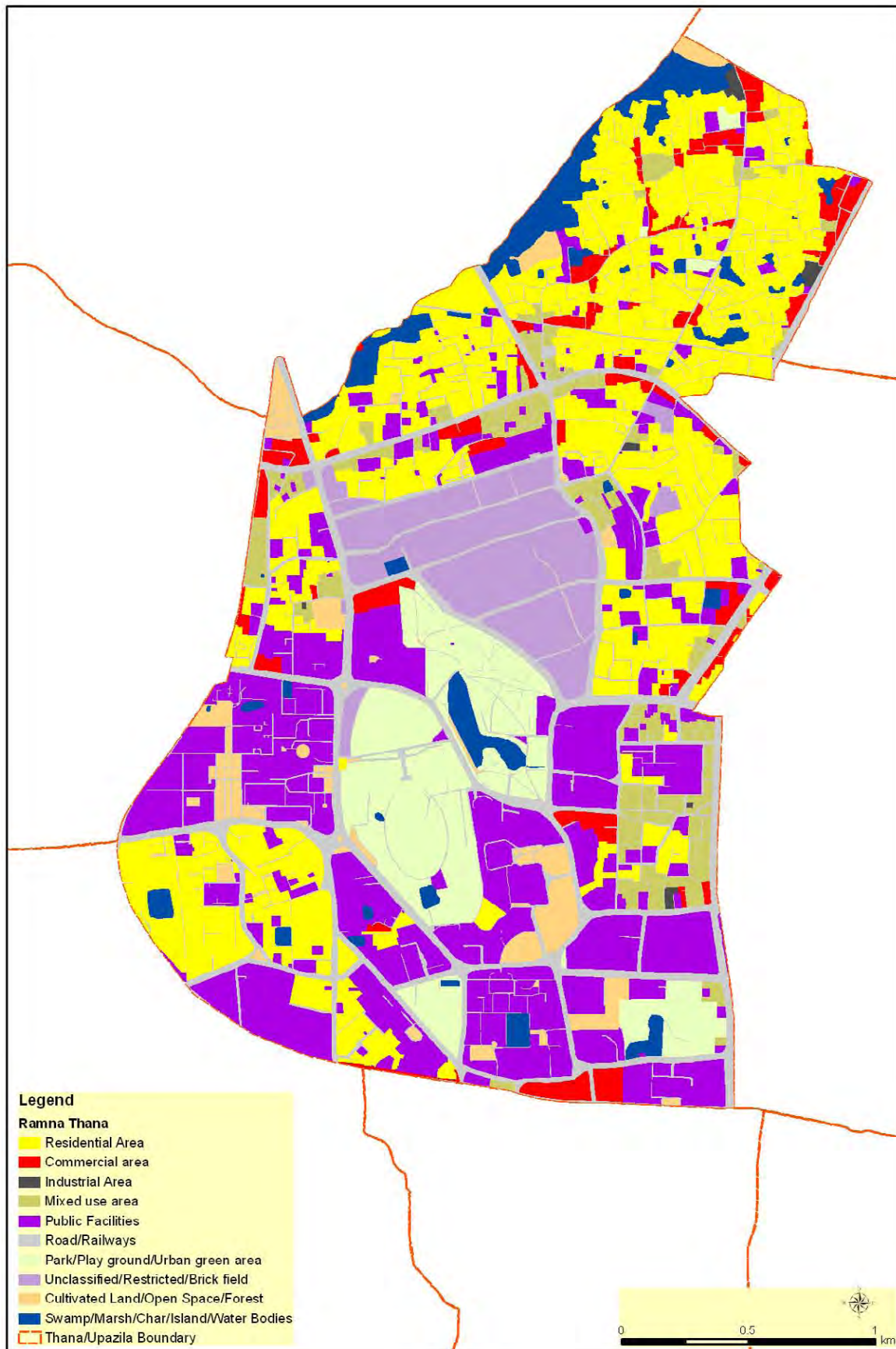


Figure 4.3-22 Existing Land Use in Ramna Thana (Year 2009)

4.3.23 Rugganj Upzia

General description: This Upzia is situated east of Dhaka Metropolitan Area (DMA) and west of Sonargaon Upzia. About 80.67% land of this Upzia belongs to RAJUK administrative area. This Upzia is surrounded by Narayanganj and Sonargaon Upzia. The total administrative area is 17615.99 hectare (43530.08 acre, 176.16 Sq. Km.). The Dhaka –Sylhet highway passes through this area. Some industrial and commercial area is situated by the road side of this highway. The population of this area in the census 2001 was 403,629 and in the census 1991, it was 375,935. In 1981, the population was 293,244. In ten years interval from 1991 to 2001 the population has been increased up to 27,694. As it is an industrial and commercial area, increase of population occurs day by day. The population density in 2001 was about 23 persons per hectare. The built up area of this Upzia is 26.61% of total land area.

Table 4.3-23 shows land use composition by category and Figure 4.3-23 shows land use map in 2009.

Table 4.3-23 Land use composition in Rugganj Upzia

Land use category	Area (ha)	Ratio (%)	Land use category	Area (ha)	Ratio (%)
Residential Area	4,141.86	22.68	Park/Play Ground/Urban Green area	0.00	0.00
Commercial	122.73	0.67	Restricted Area /Brick Field	17.40	0.10
Industrial Area	382.19	2.09	Cultivated Land/Open Space/Forest	8,707.58	47.68
Mixed use area	3.24	0.02	Swamp/Marsh/Char/Island/Water Bodies	1,145.38	6.27
Public facilities	64.21	0.35	Not Available	3,530.50	19.33
Road/Railways	146.26	0.80			

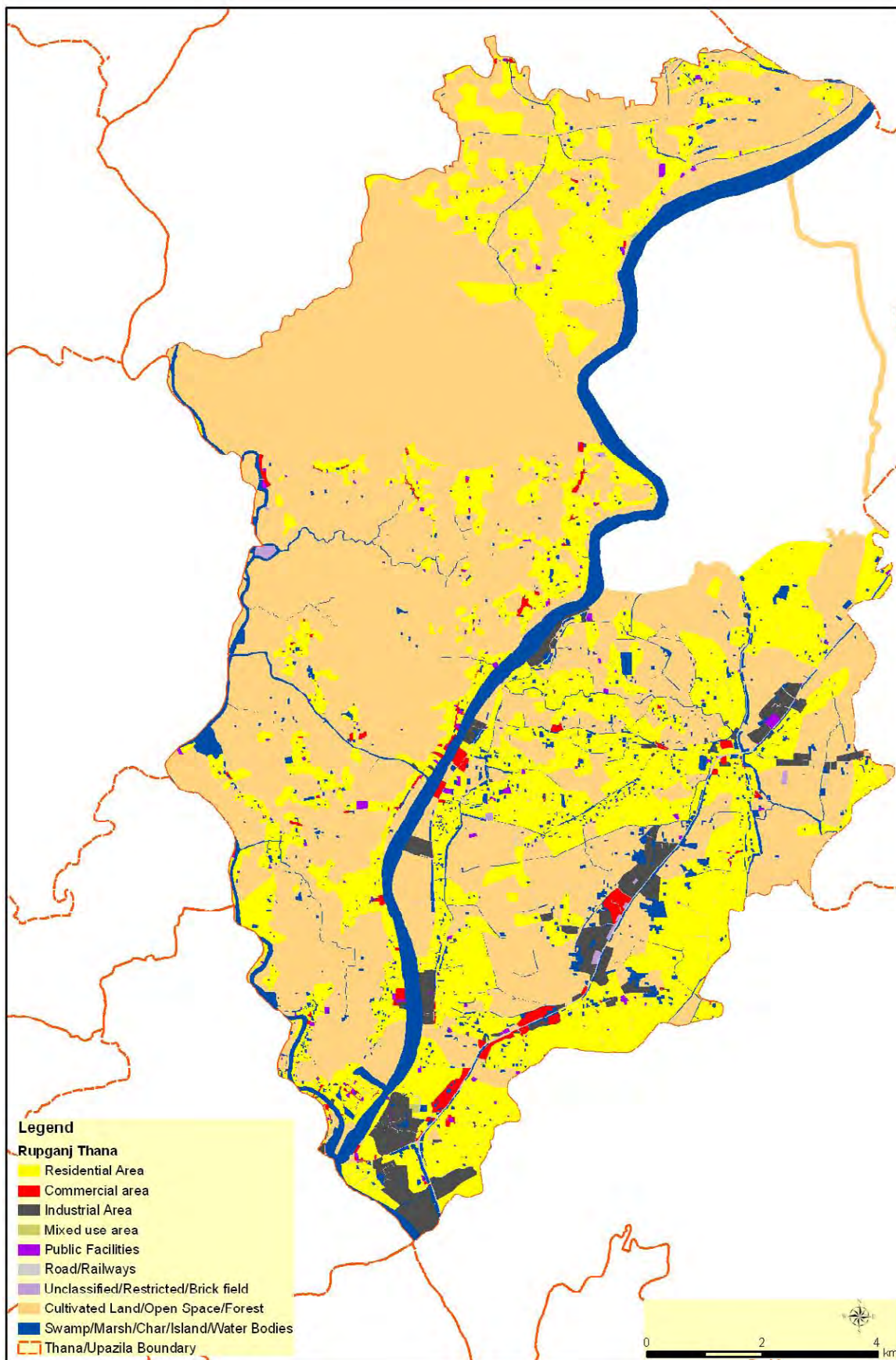


Figure 4.3-23 Existing Land Use in Rupganj Upzia (Year 2009)

4.3.24 Sabujbag Thana

General description: This Thana is situated east of Dhaka City Corporation (DCC) area. This Thana area consists of DCC ward# 27, 28, 29, 30 and Demra union (partly) and Matuail union (partly). The total administrative area is 1165.08 hectare (2879 acre, 11.65 Sq. Km.). Some industrial and commercial area is situated by the road side of major roads within this area. The population of this area in the census 2001 was 291,207 and in the census 1991, it was 354,989. In 1981, the population was 208,484. In ten years interval from 1991 to 2001 the population has been decreased up to 63,782 as the area of the Thana has been reduced from 18.18 sq km to 11.65 sq km. The population density in 2001 was about 250 persons per acre. The built up area of this Thana is 62.56% of total land area.

Table 4.3-24 shows land use composition by category and Figure 4.3-24 shows land use map in 2009.

Table 4.3-24 Land use composition in Sabujbag Thana

Land use category	Area (ha)	Ratio (%)	Land use category	Area (ha)	Ratio (%)
Residential Area	294.16	44.70	Park/Play Ground/Urban Green area	3.33	0.51
Commercial	25.90	3.94	Restricted Area /Brick Field	0.00	0.00
Industrial Area	1.27	0.19	Cultivated Land/Open Space/Forest	149.39	22.70
Mixed use area	15.49	2.35	Swamp/Marsh/Char/Island/Water Bodies	96.97	14.74
Public facilities	28.77	4.37	Not Available	0.00	0.00
Road/Railways	42.74	6.50			

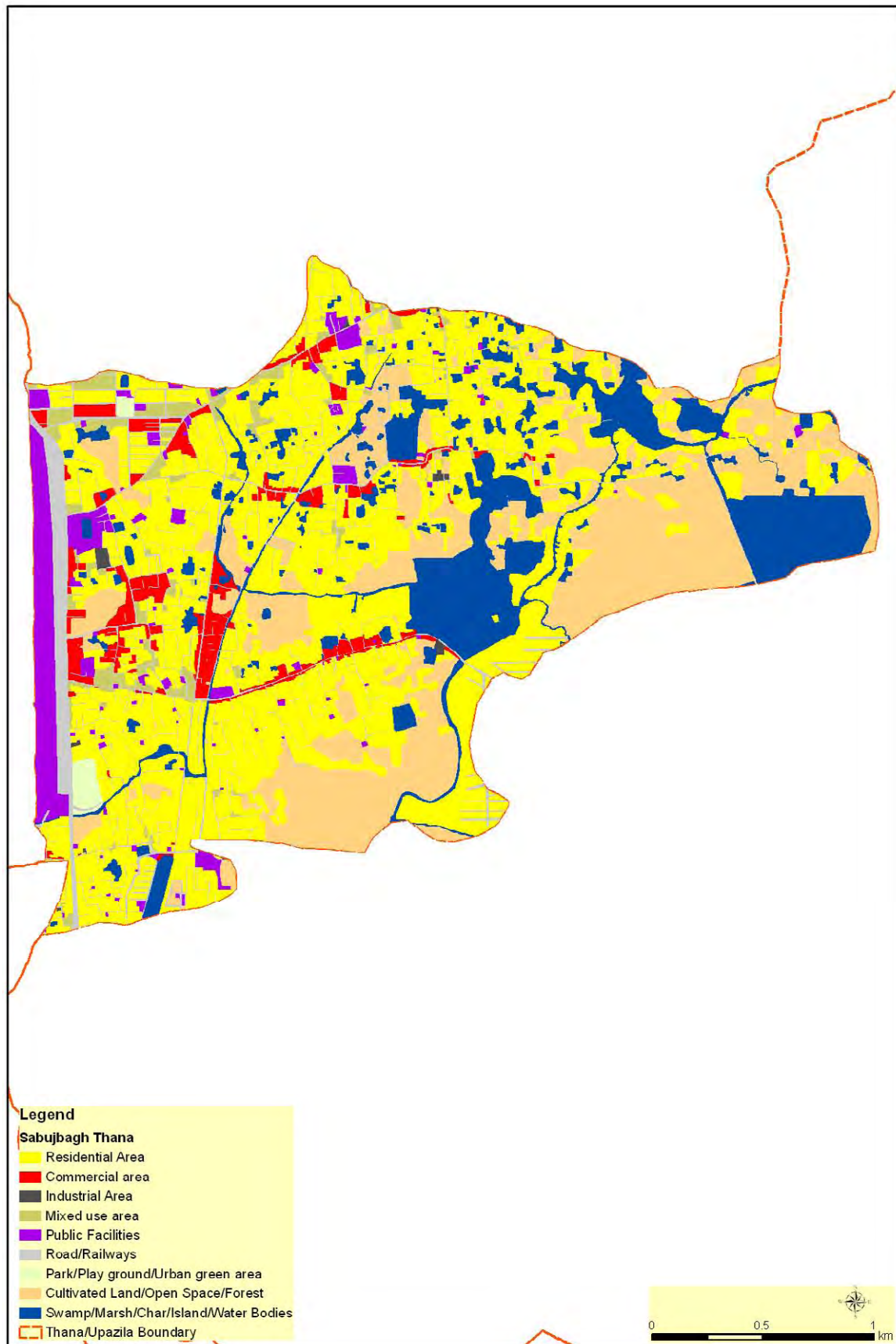


Figure 4.3-24 Existing Land Use in Sabujbagh Thana (Year 2009)

4.3.25 Savar Upazilla

General description: This Upzia is situated west of Dhaka Metropolitan Area (DMA) and west of Sonargaon Upzia. About 84.17% land of this Upzia belongs to RAJUK administrative area. The total administrative area is 28012.00 hectare (69219.16 acre, 280.12 Sq. Km.). It has Upzia headquarter and Savar pourashava area within this Upzia area. The Dhaka-Aricha and Nabinagar – Tangail highways passes through this area. Some industrial and commercial area is situated by the road side of these highways. This Upzia is surrounded by Banshi and Dhaleshwari River in the west and by Turag River in the east. The population of this area in the census 2001 was 587,041 and in the census 1991, it was 378,034. In 1981, the population was 261,904. In ten years interval from 1991 to 2001 the population has been increased up to 209,007. As it is an industrial and commercial area, increase of population occurs day by day. The population density in 2001 was about 21 persons per hectare. The built up area of this Upzia is 36.14% of total land area.

Table 4.3-25 shows land use composition by category and Figure 4.3-25 shows land use map in 2009.

Table 4.3-25 Land use composition in Savar Upzia

Land use category	Area (ha)	Ratio (%)	Land use category	Area (ha)	Ratio (%)
Residential Area	8,089.56	28.34	Park/Play Ground/Urban Green area	78.73	0.28
Commercial	138.09	0.48	Restricted Area /Brick Field	504.09	1.77
Industrial Area	533.10	1.87	Cultivated Land/Open Space/Forest	10,682.45	37.42
Mixed use area	60.33	0.21	Swamp/Marsh/Char/Island/Water Bodies	2,528.42	8.86
Public facilities	998.06	3.50	Not Available	4,520.50	15.83
Road/Railways	416.42	1.46			

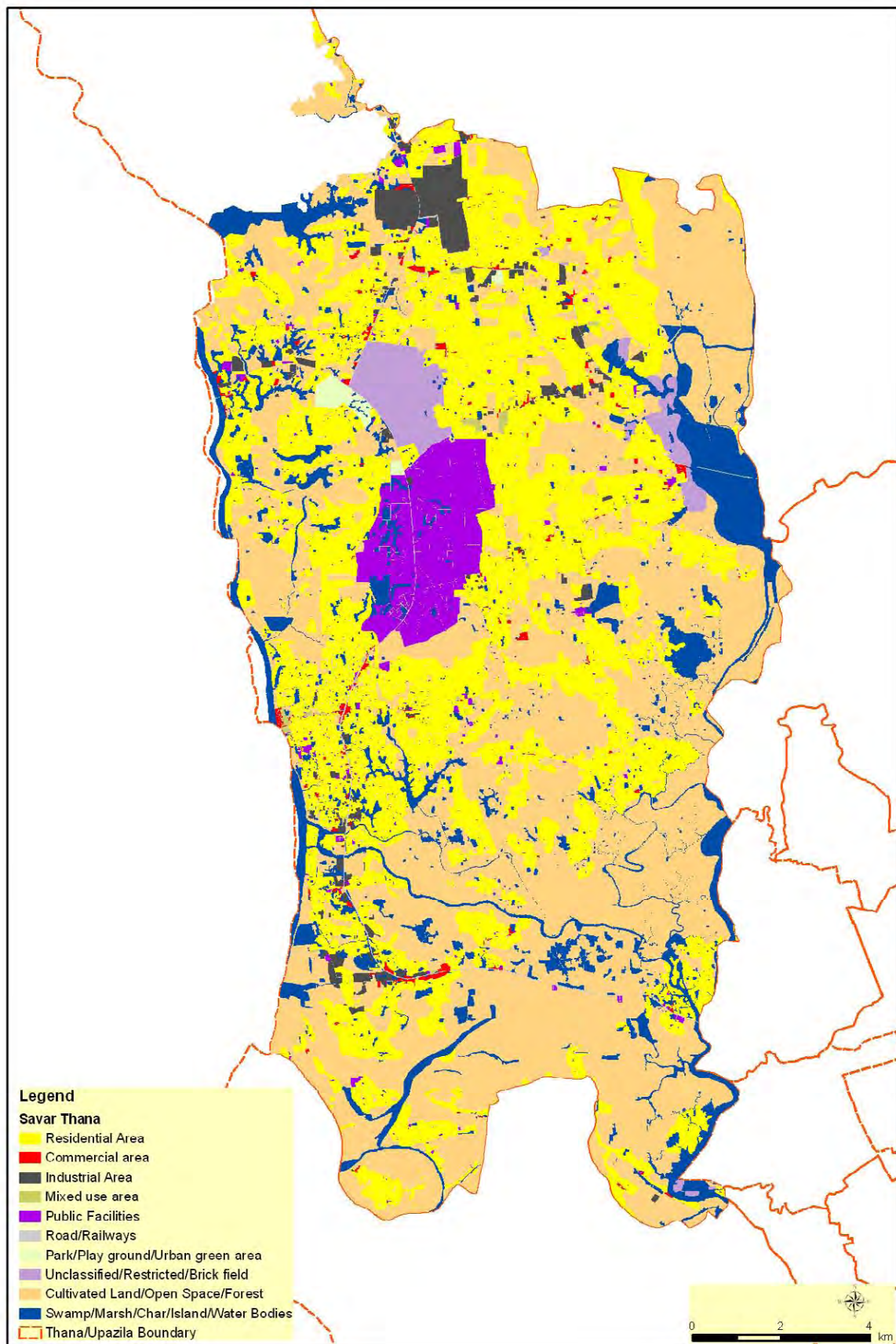


Figure 4.3-25 Existing Land Use in Savar Upzia (Year 2009)

4.3.26 Shyampur Thana

General description: This Thana is situated south of Dhaka City Corporation area (DCC). This Thana area consists of DCC ward# 83, 87, 88, 89 and 90 and Shayampur union. The total administrative area is 1016.57 hectare (2512 acre, 10.17 Sq. Km.). The Dhaka-Munshiganj and Dhaka-Chittagong highways pass through this area. Some industrial and commercial area is situated by the road side of these highways. The population of this area in the census 2001 was 376545. The population density in 2001 was 370 persons per hectare. In the census year 1991, this Thana was not existed within that time. So it is a new Thana established after the census year 1991 within Dhaka Metropolitan (DMA) area. The built up area of this Thana is 77.83% of total land area.

Table 4.3-26 shows land use composition by category and Figure 4.3-26 shows land use map in 2009.

Table 4.3-26 Land use composition in Shyampur Thana

Land use category	Area (ha)	Ratio (%)	Land use category	Area (ha)	Ratio (%)
Residential Area	448.09	42.06	Park/Play Ground/Urban Green area	0.94	0.09
Commercial	35.20	3.30	Restricted Area /Brick Field	7.03	0.66
Industrial Area	140.72	13.21	Cultivated Land/Open Space/Forest	30.84	2.89
Mixed use area	25.40	2.38	Swamp/Marsh/Char/Island/Water Bodies	198.25	18.61
Public facilities	99.45	9.33	Not Available	0.00	0.00
Road/Railways	79.50	7.46			

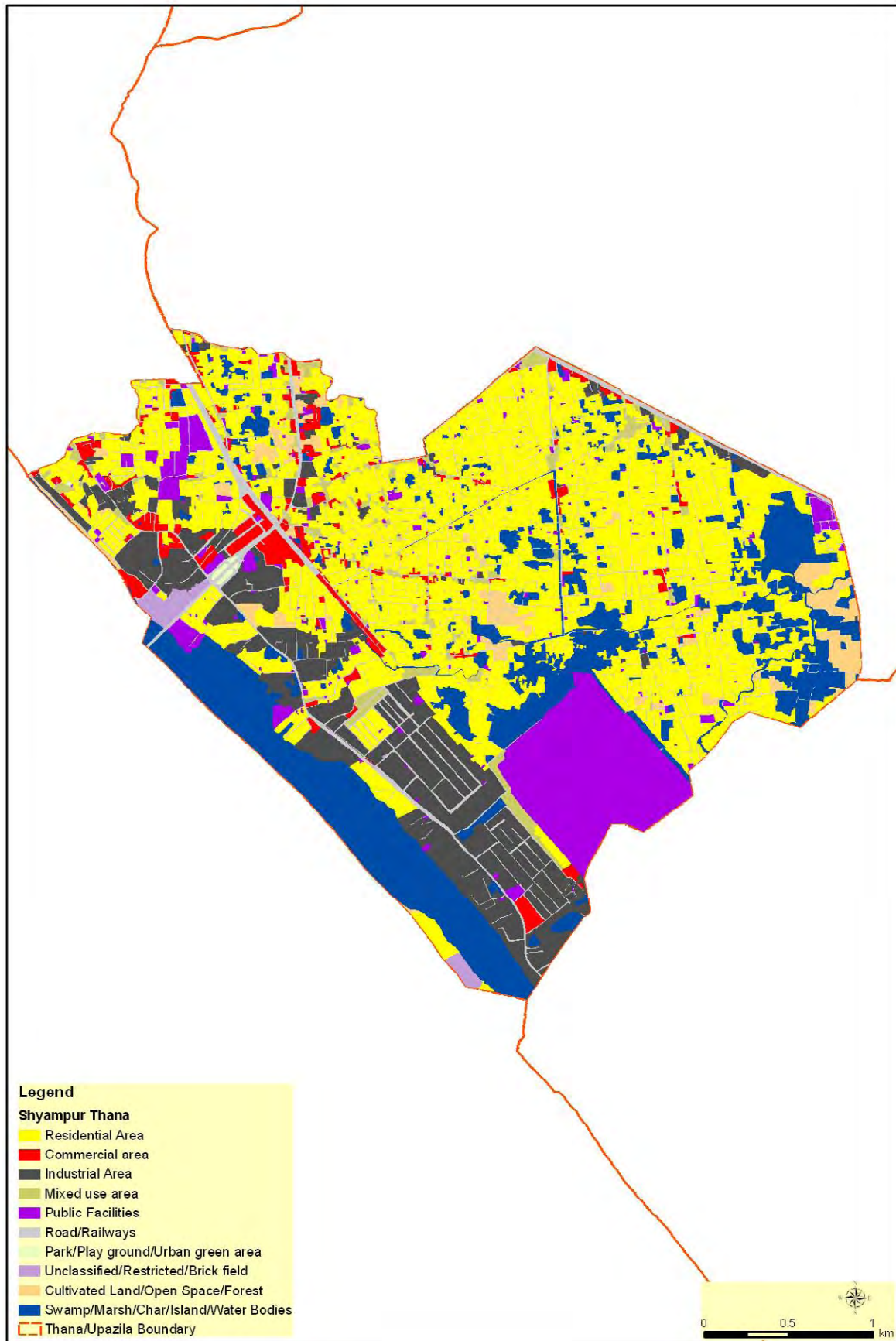


Figure 4.3-26 Existing Land Use in Shyampur Thana (Year 2009)

4.3.27 Sonargaon Upazilla

General description: This Upzia is situated east of Narayanganj and Bandar Upzia. It is the eastern boundary Upzia of Narayanganj District. The total administrative area is 17166.00 hectare (42418.11 acre, 171.66 Sq. Km.). Only 55.49% area belongs to RAJUK administrative area. In that area, only four unions named Shambhupur, Mugrapara, Sadipur and Kanchpur unions are there. Its Upzia headquarter and pourashava areas are outside of that RAJUK area. The Dhaka-Chittagong and Dhaka –Sylhet highways passes through this area. Some industrial and commercial areas are situated by the road side of these highways. This Upzia is surrounded by Old Brahmaputra River and by Shitalakhaya River in the west and by river Meghna in the south-east. The population of this area in the census 2001 was 305,562 and in the census 1991, it was 261,881. In 1981, the population was 210,330. In ten years interval from 1991 to 2001 the population has been increased up to 43,681. The increase of population occurs day by day within this Thana area. The population density in 2001 was about 18 persons per hectare. The built up area of this Upzia is 18.75% of total land area.

Table 4.3-27 shows land use composition by category and Figure 4.3-27 shows land use map in 2009.

Table 4.3-27 Land use composition in Sonargaon Upzia

Land use category	Area (ha)	Ratio (%)	Land use category	Area (ha)	Ratio (%)
Residential Area	3113.61	17.39	Park/Play Ground/Urban Green area	3.08	0.02
Commercial	57.64	0.32	Restricted Area /Brick Field	0.00	0.00
Industrial Area	55.79	0.31	Cultivated Land/Open Space/Forest	4968.97	27.75
Mixed use area	0.73	0.00	Swamp/Marsh/Char/Island/Water Bodies	1608.35	8.98
Public facilities	43.51	0.24	Not Available	7970.40	44.51
Road/Railways	84.25	0.47			

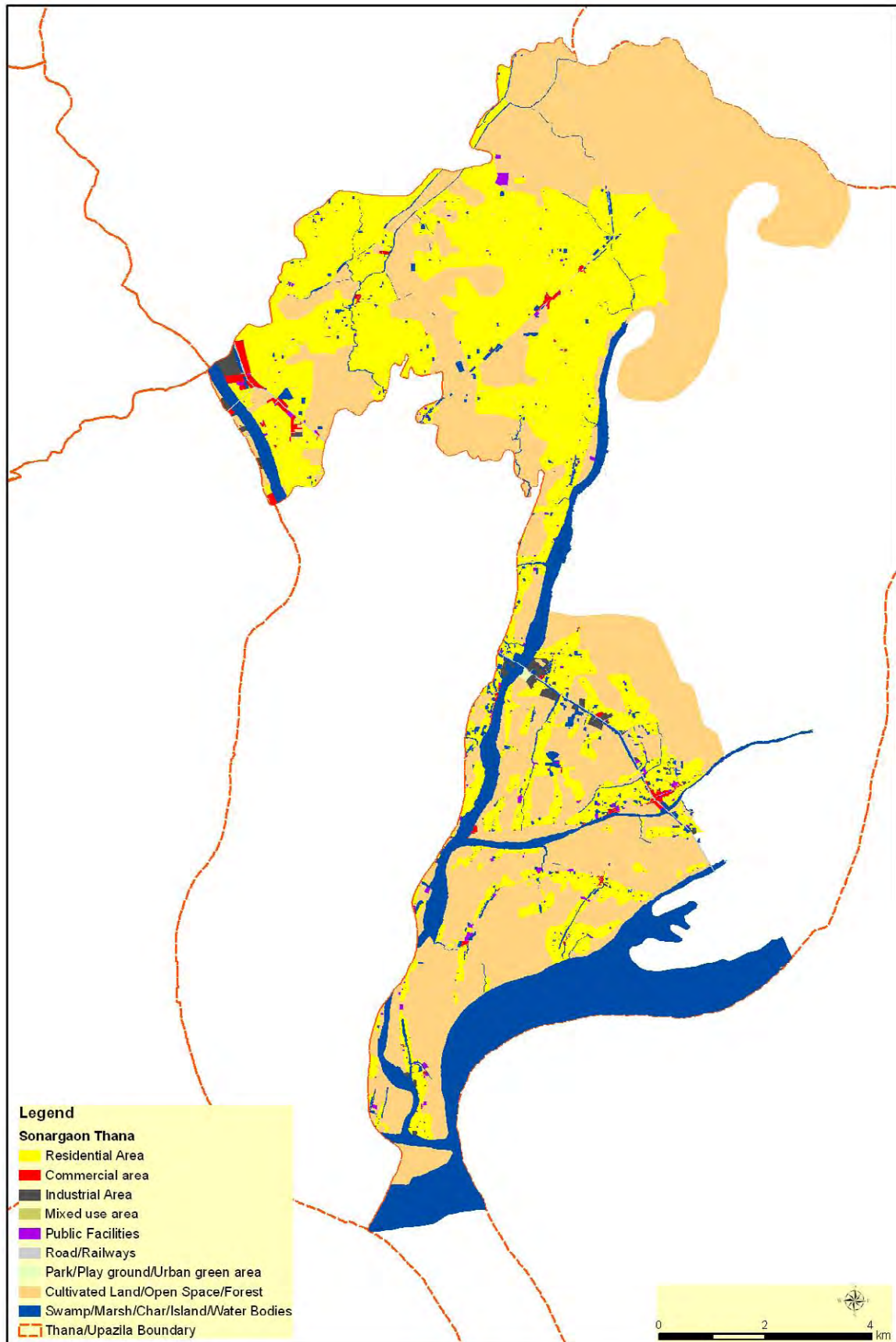


Figure 4.3-27 Existing Land Use in Sonargaon Upzia (Year 2009)

4.3.28 Sutrapur Thana

General description: This Thana is situated south of Dhaka City corporation (DCC) area. This Thana consists of DCC ward# 74, 75, 76, 77, 78, 79, 80, 81 and 82. The total administrative area is 399.02 hectare (986 acre, 3.99 Sq. Km.). Most of the commercial areas are situated by the side of the major roads within this Thana area. This Thana is surrounded by Buriganga River in the south. The population of this area in the census 2001 was 352,420 and in the census 1991, it was 307,483. In 1981, the population was 298,638. In ten years interval from 1991 to 2001 the population has been increased up to 44,937. As it is a commercial and industrial area, increase of population occurs day by day. The population density in 2001 was about 883 persons per hectare. The built up area of this Thana is 96.87% of total land area.

Table 4.3-28 shows land use composition by category and Figure 4.3-28 shows land use map in 2009.

Table 4.3-28 Land use composition in Sutrapur Thana

Land use category	Area (ha)	Ratio (%)	Land use category	Area (ha)	Ratio (%)
Residential Area	186.71	48.02	Park/Play Ground/Urban Green area	2.64	0.68
Commercial	62.13	15.98	Restricted Area /Brick Field	2.94	0.76
Industrial Area	3.51	0.90	Cultivated Land/Open Space/Forest	2.69	0.69
Mixed use area	41.01	10.55	Swamp/Marsh/Char/Island/Water Bodies	6.56	1.69
Public facilities	29.81	7.67	Not Available	0.00	0.00
Road/Railways	50.80	13.07			

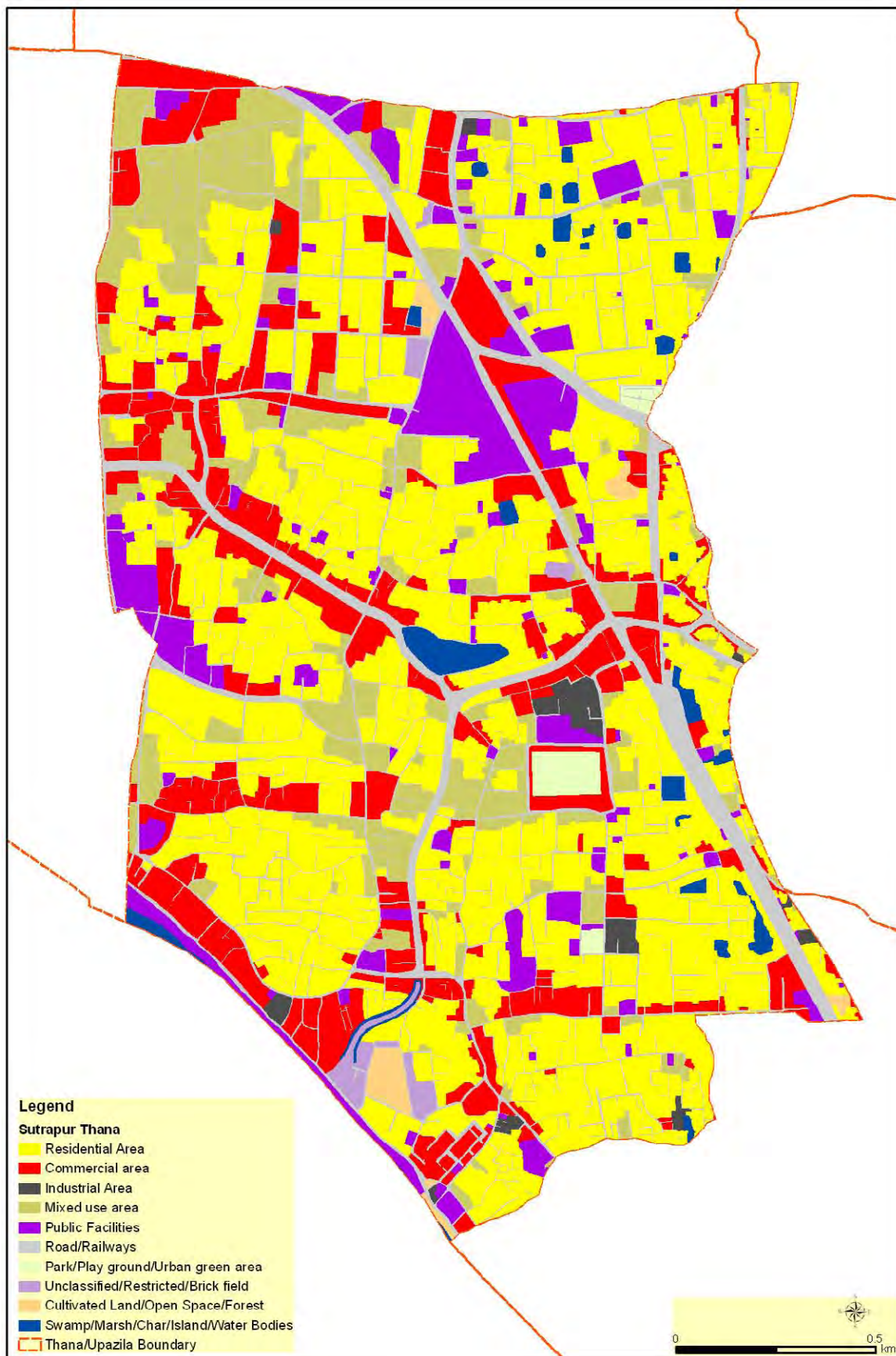


Figure 4.3-28 Existing Land Use in Sutrapur Thana (Year 2009)

4.3.29 Tejgaon Thana

General description: This Thana is situated at the middle of Dhaka City Corporation area. This Thana consists of DCC ward# 37, 38, 39 and 40. The total administrative area is 889.09 hectare (2197acre, 8.89 Sq. Km.). The Air port road and Tongi Diversion road are passing through this area. Some industrial and commercial area is situated by the road side of these highways. The population of this area in the census 2001 was 302,109 and in the census 1991, it was 220,012. In 1981, the population was 187,282. In ten years interval from 1991 to 2001 the population has been increased up to 82,097. As it is an industrial and commercial area, increase of population occurs day by day. The population density in 2001 was about 340 persons per hectare. The built up area of this Thana is 71.98% of total land area.

Table 4.3-29 shows land use composition by category and Figure 4.3-29 shows land use map in 2009.

Table 4.3-29 Land use composition in Tejgaon Thana

Land use category	Area (ha)	Ratio (%)	Land use category	Area (ha)	Ratio (%)
Residential Area	293.86	29.75	Park/Play Ground/Urban Green area	3.86	0.39
Commercial	68.78	6.96	Restricted Area /Brick Field	186.19	18.85
Industrial Area	87.14	8.82	Cultivated Land/Open Space/Forest	52.23	5.29
Mixed use area	8.52	0.86	Swamp/Marsh/Char/Island/Water Bodies	38.43	3.89
Public facilities	129.62	13.12	Not Available	0.00	0.00
Road/Railways	119.30	12.08			

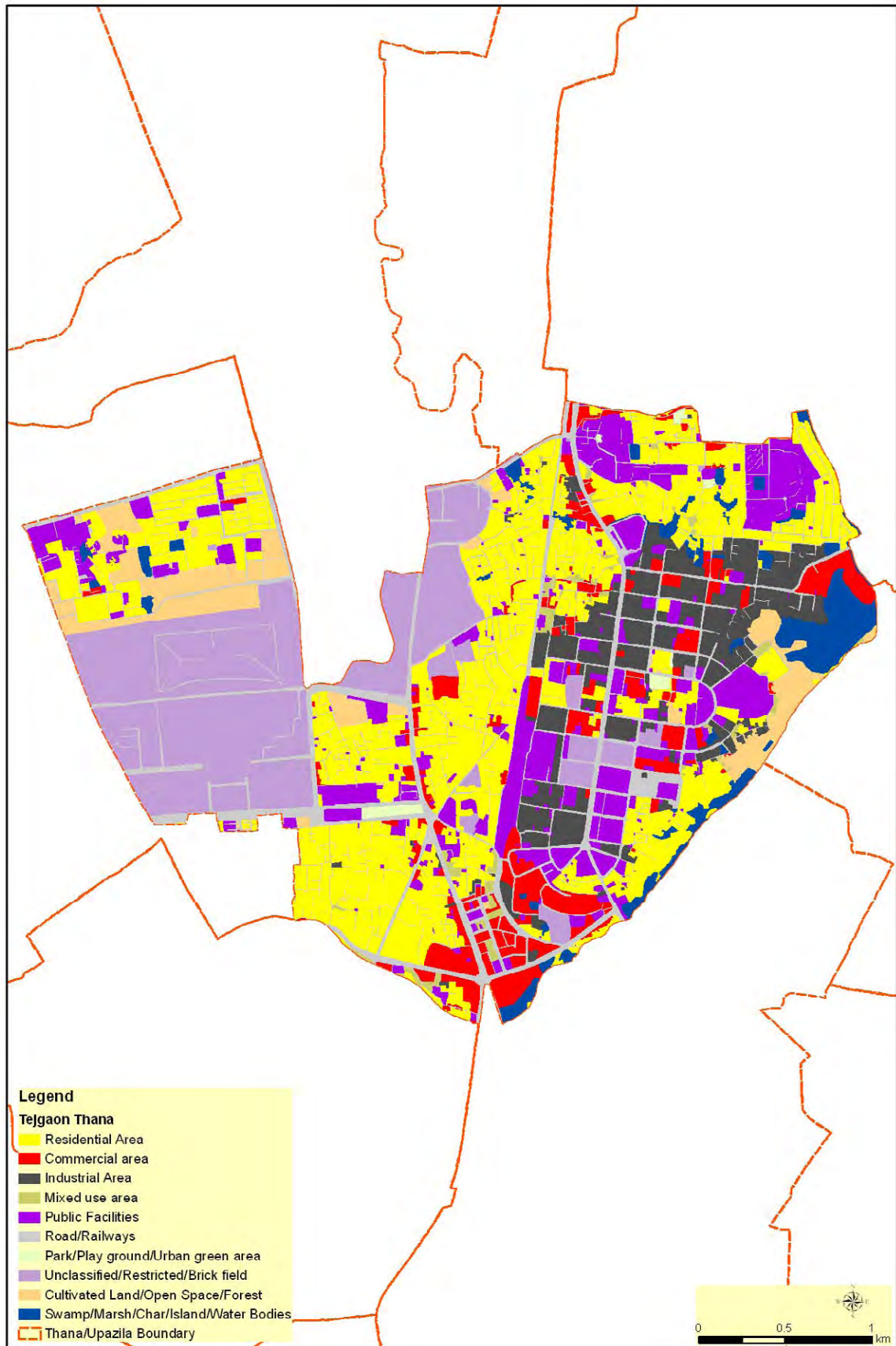


Figure 4.3-29 Existing Land Use in Tejgaon Thana (Year 2009)

4.3.30 Uttara Thana

General description: This Thana consists of City Corporation ward#1 (partly) and other three unions are Harirampur, Uttar khan and Dakshin Khan (Partly). Some portion of this Thana belongs to the DCC and some portion is outside DCC but within the DMA area. This Thana is surrounded by the river Balu in the east and river Turag in the north and west. The total administrative area is 5,829.90 hectare (14406 acre, 58.30 Sq. Km). The population of this area in the census 2001 was 345,097 and in the census 1991, it was 108,077. In 1981, the population was 43,084. In ten years interval from 1991 to 2001 the population has been increased up to 237,020. The population density in 2001 was 59 persons per hectare. The built up area of this Thana is 40.15% of total land area.

Table 4.3-30 shows land use composition by category and Figure 4.3-30 shows land use map in 2009.

Table 4.3-30 Land use composition in Uttara Thana

Land use category	Area (ha)	Ratio (%)	Land use category	Area (ha)	Ratio (%)
Residential Area	2092.17	34.53	Park/Play Ground/Urban Green area	2.19	0.04
Commercial	42.71	0.70	Restricted Area /Brick Field	98.41	1.62
Industrial Area	17.70	0.29	Cultivated Land/Open Space/Forest	2324.91	38.37
Mixed use area	20.42	0.34	Swamp/Marsh/Char/Island/Water Bodies	1203.36	19.86
Public facilities	61.87	1.02	Not Available	0.00	0.00
Road/Railways	195.55	3.23			

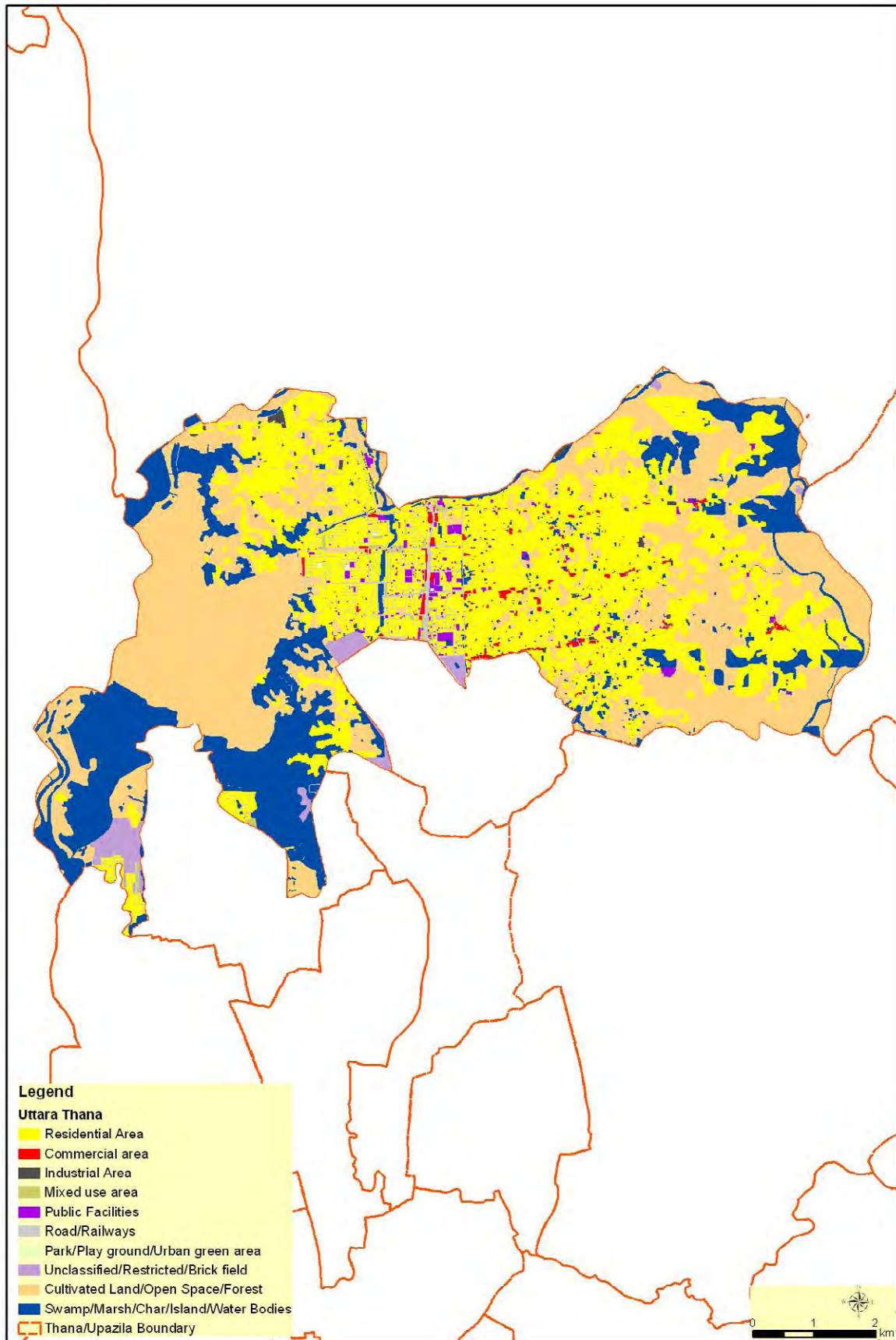


Figure 4.3-30 Existing Land Use in Uttara Thana (Year 2009)

Table 4.3-31 Built up area by Thana/Upzia

Sl. No.	Housing Area		Commercial		Industrial Area		Mixed use area		Public facilities		Road /Railways		Park /Play ground /Urban green area		Buildup area
	Area	%	Area	%	Area	%	Area	%	Area	%	Area	%	Area	%	
1	1232.3	23.47	63.26	1.20	5.27	0.10	11.44	0.22	29.84	0.57	142.3	2.71	0	0.0	28.27
2	1843.75	30.80	41.78	0.70	118.1	1.97	7.38	0.12	119.9	2.00	83.46	1.39	2.32	0.0	37.02
3	118.27	14.74	8.32	1.04	0.38	0.05	0.16	0.02	4.81	0.60	29.15	3.63	0	0.0	20.08
4	56.11	6.03	1.8	0.19	0	0.00	1.09	0.12	8.37	0.90	30.69	3.30	0.72	0.1	10.62
5	1204.47	34.83	37.47	1.08	92.15	2.67	34.49	1.00	76.02	2.20	129.6	3.75	1.93	0.1	45.59
6	279.49	48.29	20.85	3.60	0.5	0.09	46.37	8.01	59	10.19	75.06	12.97	15.7	2.7	85.86
7	10615.9	23.22	273.5	0.60	334	0.73	85.4	0.19	466	1.02	543.9	1.19	2.16	0.0	26.95
8	364.17	45.17	37.3	4.63	1.08	0.13	20.99	2.60	96.67	11.99	109.8	13.61	15.4	1.9	80.04
9	150.66	30.57	6.08	1.23	24.97	5.07	23.54	4.78	16.81	3.41	1.64	3.58	0.7	0.1	48.78
10	475.78	44.12	9.27	0.86	6.16	0.57	5.4	0.50	21.09	1.96	63.53	5.89	0.35	0.0	53.93
11	2022.16	9.00	23.98	0.11	0	0.00	0.37	0.00	44.35	0.20	66.38	0.30	0	0.0	9.61
12	142.93	63.07	0.11	0.05	1.66	0.73	2.18	0.96	1.28	0.57	9.22	4.07	0	0.0	69.45
13	3583.53	18.66	86.25	0.45	128.6	0.67	24.83	0.13	69.56	0.36	215.5	1.12	0.02	0.0	21.39
14	608.33	35.46	33.52	1.95	3.38	0.20	34.68	2.02	20.95	1.22	83.19	4.85	1.81	0.1	45.81
15	46.52	20.00	60.59	26.04	0.61	0.26	64.38	27.67	21.03	9.04	31.78	13.66	0.18	0.1	96.75
16	162.13	43.89	25.41	6.88	5.96	1.61	44	11.91	42.11	11.40	38.35	10.38	7.66	2.1	88.14
17	859.79	55.30	31.52	2.03	37.35	2.40	26.73	1.72	124.6	8.01	137.6	8.85	9.38	0.6	78.91
18	470.05	43.48	12.36	1.14	5.53	0.51	63.81	5.90	73.05	6.76	104.1	9.62	7.55	0.7	68.11
19	194.94	40.16	31.25	6.44	0.89	0.18	46.39	9.56	70.99	14.63	77.44	15.95	13.8	2.8	89.76
20	3296.28	32.96	157.1	1.57	430.7	4.31	115.6	1.16	191.9	1.92	269.9	2.70	4.27	0.0	44.66
21	364.27	39.40	11.97	1.29	33.84	3.66	15.89	1.72	23.66	2.56	71.53	7.74	1.08	0.1	56.49
22	200.35	27.83	29.09	4.04	1.86	0.26	34.46	4.79	174.1	24.18	105.3	14.63	67.2	9.3	85.06
23	4141.86	22.68	122.7	0.67	382.2	2.09	3.24	0.02	64.21	0.35	146.3	0.80	0	0.0	26.61
34	294.16	44.70	25.9	3.94	1.27	0.19	15.49	2.35	28.77	4.37	42.74	6.50	3.33	0.5	62.56
25	8089.56	28.34	138.1	0.48	533.1	1.87	60.33	0.21	998.1	3.50	416.4	1.46	78.7	0.3	36.14
26	448.09	42.06	35.2	3.30	140.7	13.21	25.4	2.38	99.45	9.33	79.5	7.46	0.94	0.1	77.83
27	3113.61	17.39	57.64	0.32	55.79	0.31	0.73	0.00	43.51	0.24	84.25	0.47	3.08	0.0	18.75
28	186.71	48.02	62.13	15.98	3.51	0.90	41.01	10.55	29.81	7.67	50.8	13.07	2.64	0.7	96.87
29	293.86	29.75	68.78	6.96	87.14	8.82	8.52	0.86	129.6	13.12	119.3	12.08	3.86	0.4	71.98
30	2092.17	34.53	42.71	0.70	17.7	0.29	20.42	0.34	61.87	1.02	195.6	3.23	2.19	0.0	40.15