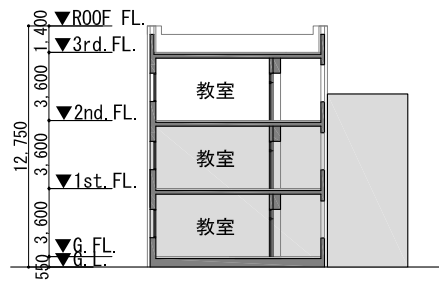


配置図 S=1:600

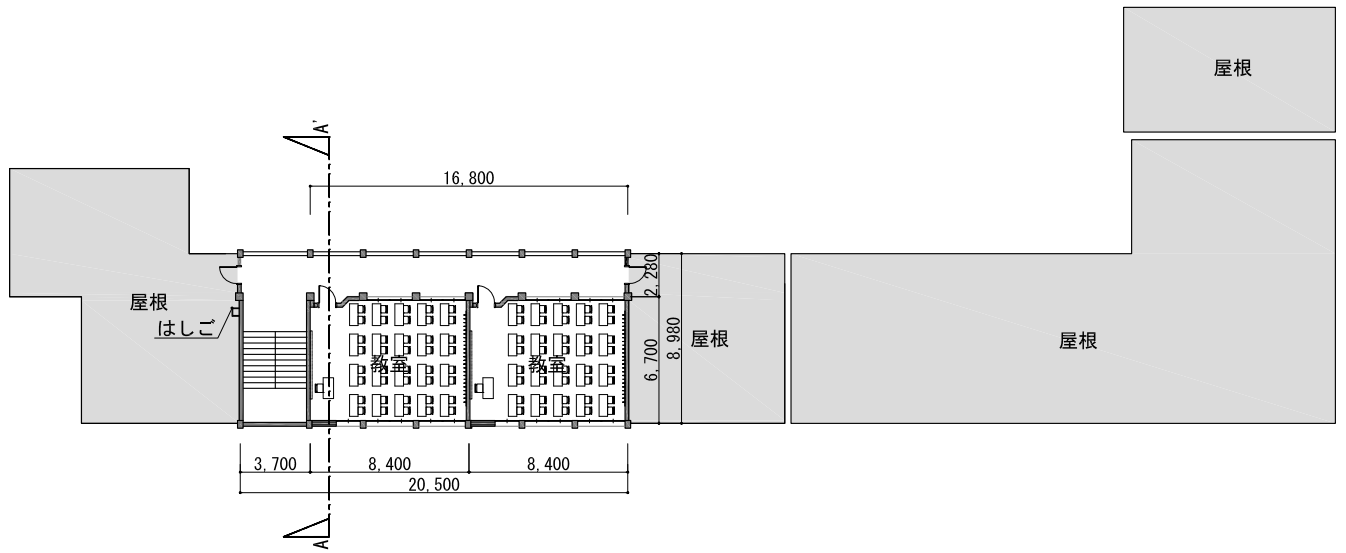


A-A' 断面図 S=1:400

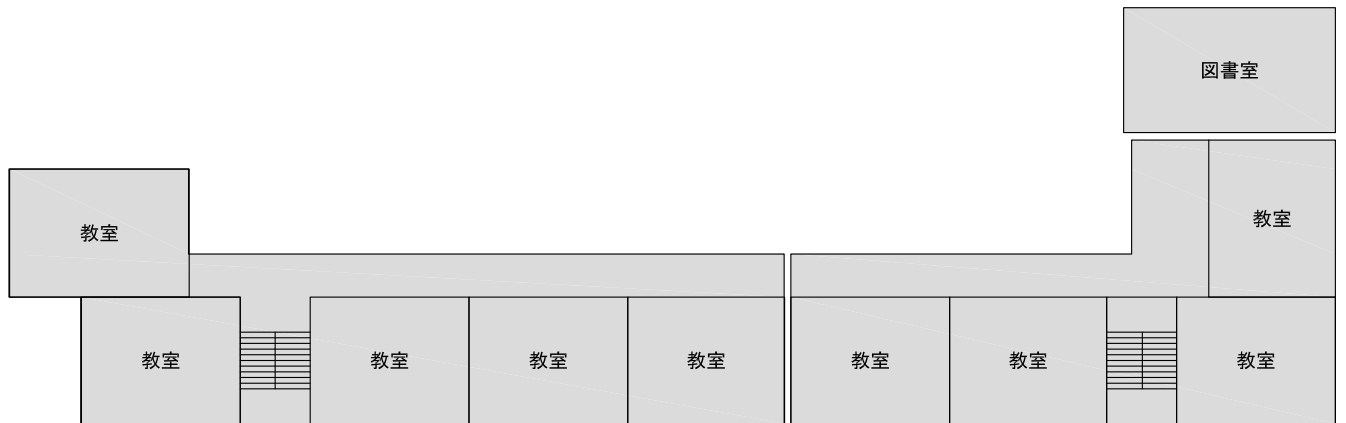
- ▨: コンクリート舗装
- : アスファルト舗装
- : 既存建物範囲



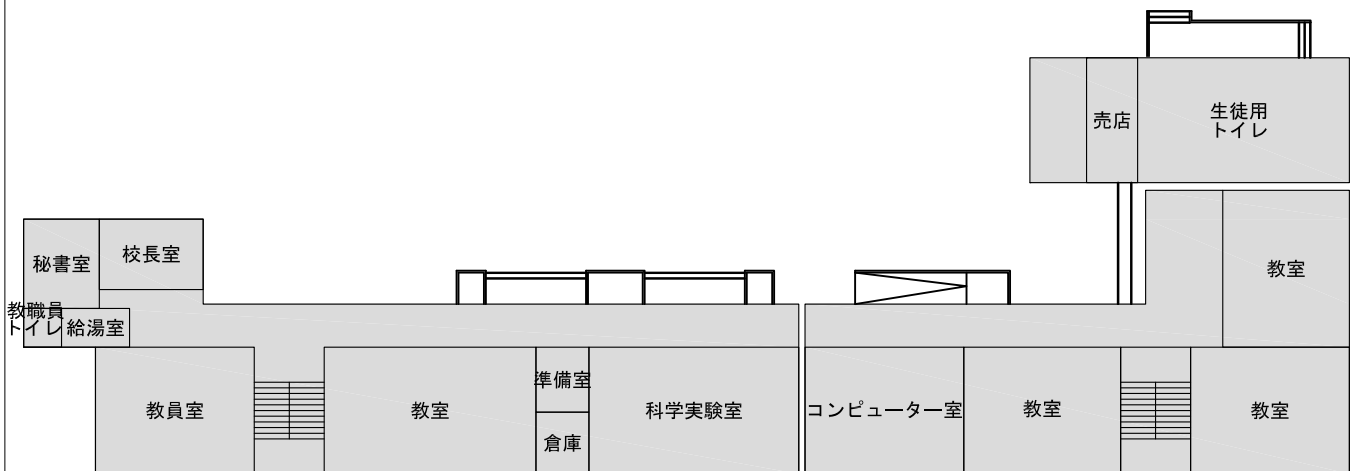
南東立面図 S=1:400



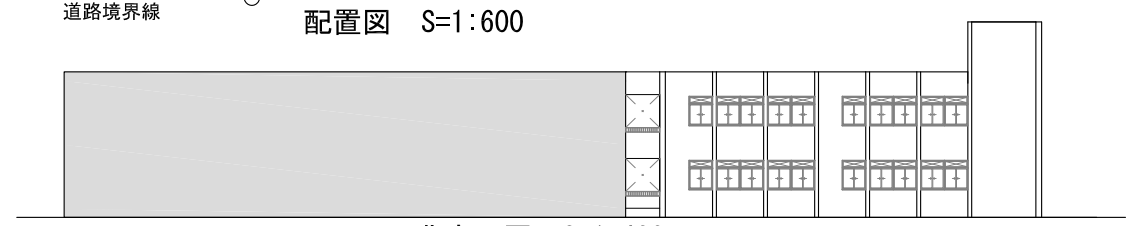
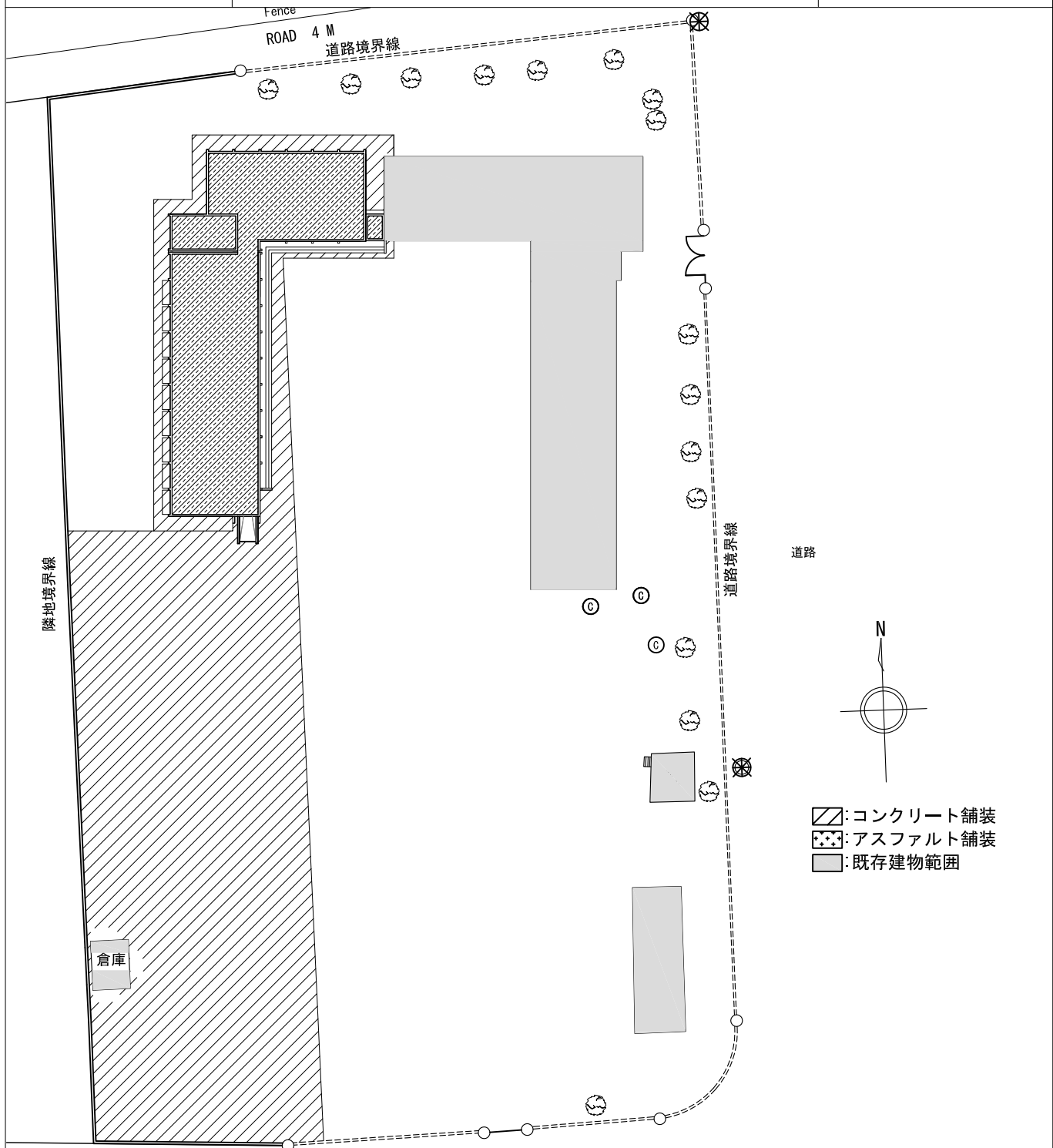
3階平面図 S=1:400



2階平面図 S=1:400



1階平面図 S=1:400



配置図 S=1:600

北立面図 S=1:400

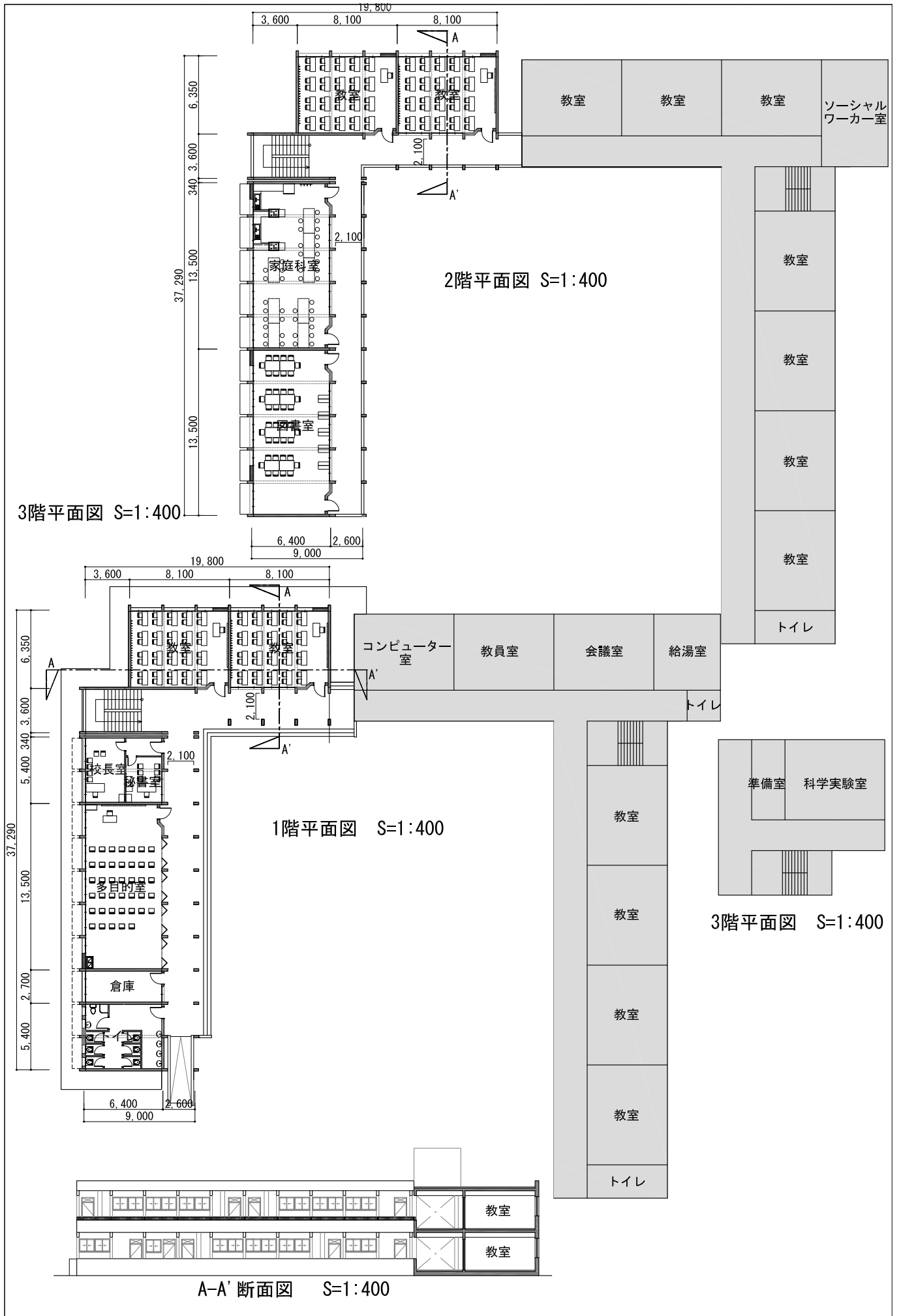
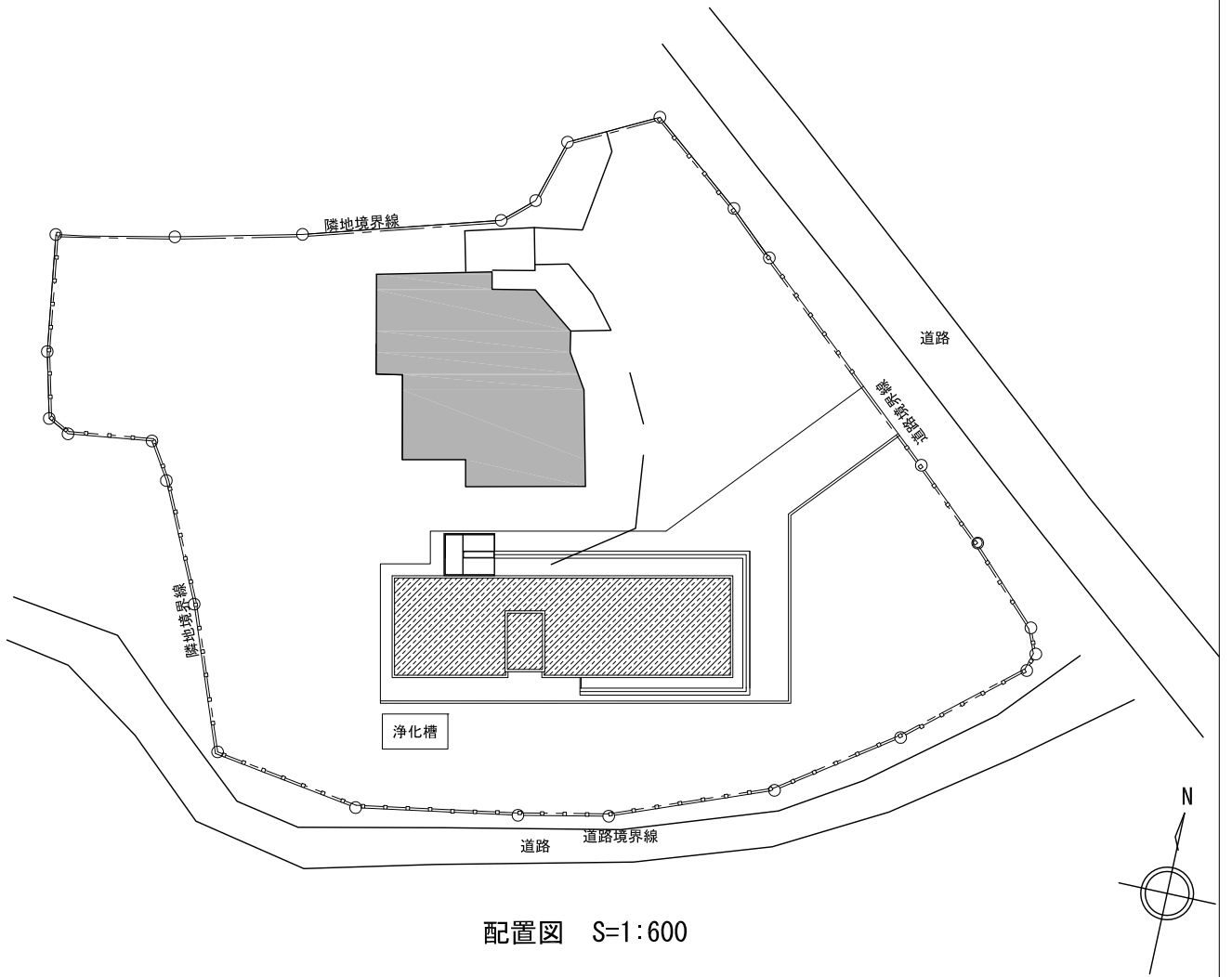
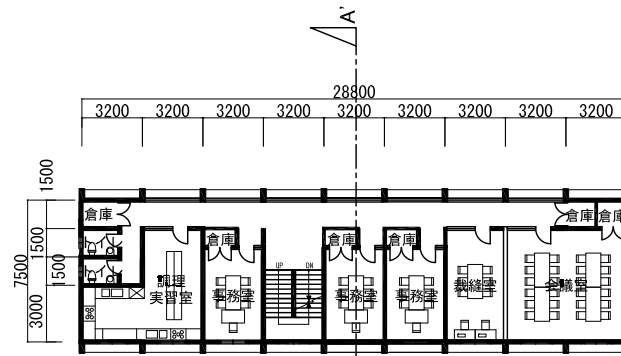


図-14

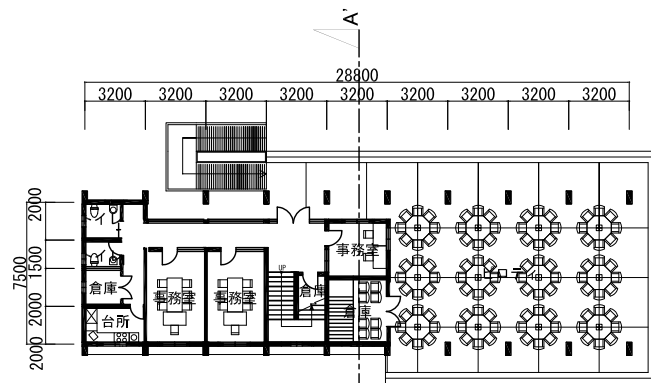


配置図 S=1:600

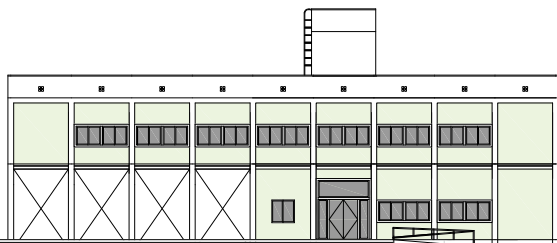
■: 既存建物範囲



2階平面図 S=1:400



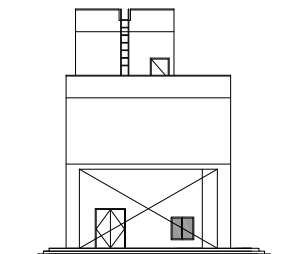
1階平面図 S=1:400



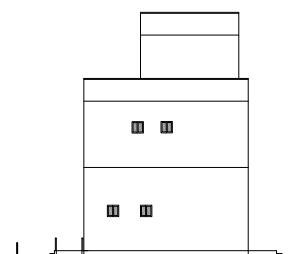
北側立面図 S=1:400



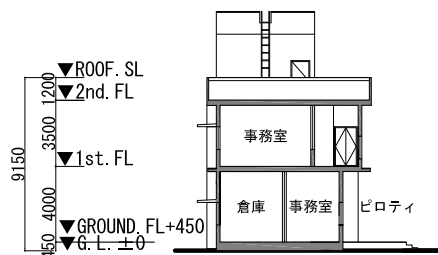
南側立面図 S=1:400



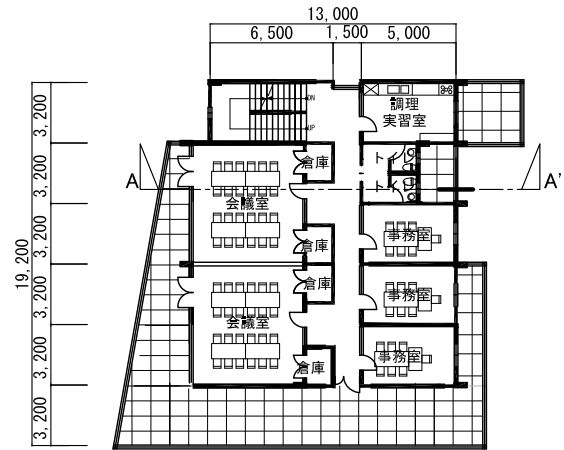
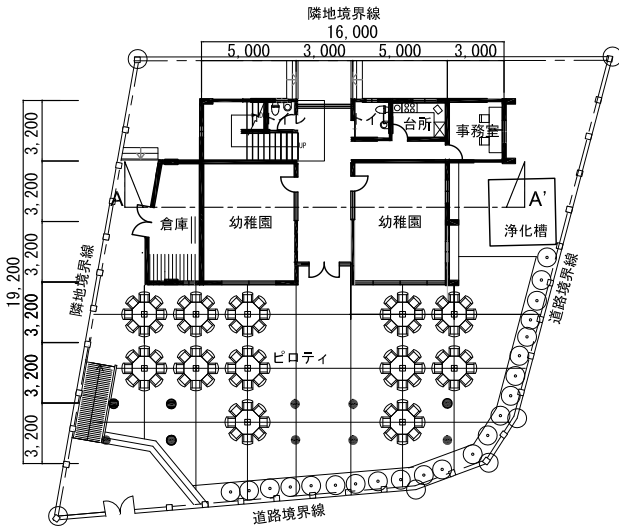
東側立面図 S=1:400



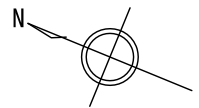
西側立面図 S=1:400



A-A'断面図 S=1:400

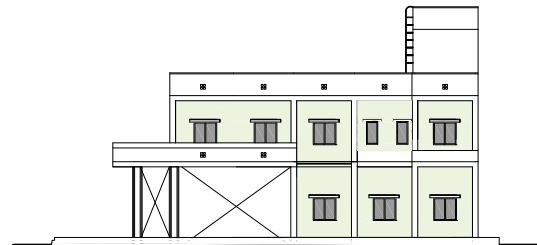
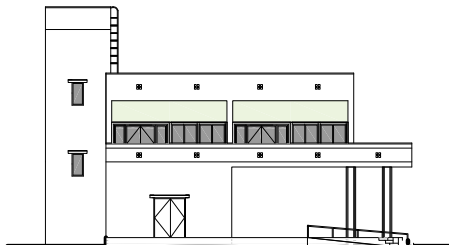


■: 既存建物範囲



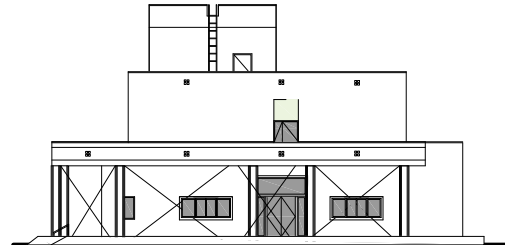
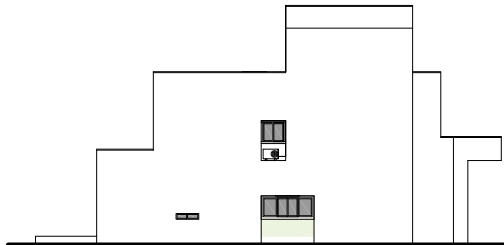
配置図兼 1階平面図 S=1:400

2階平面図 S=1:400



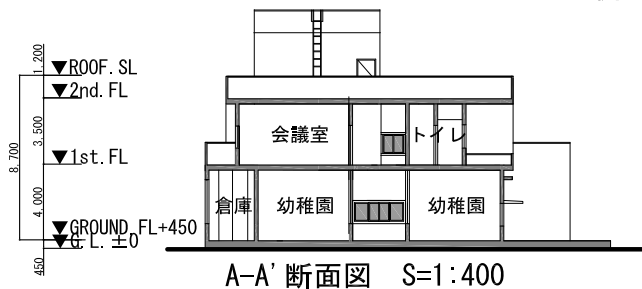
北側立面図 S=1:400

南側立面図 S=1:400

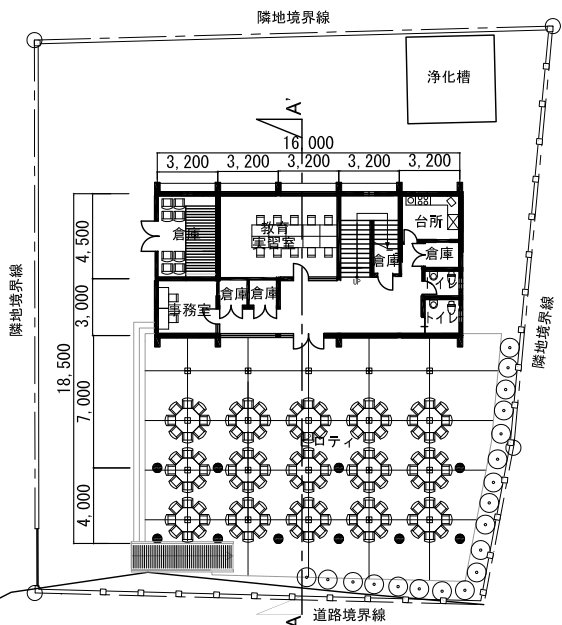


東側立面図 S=1:400

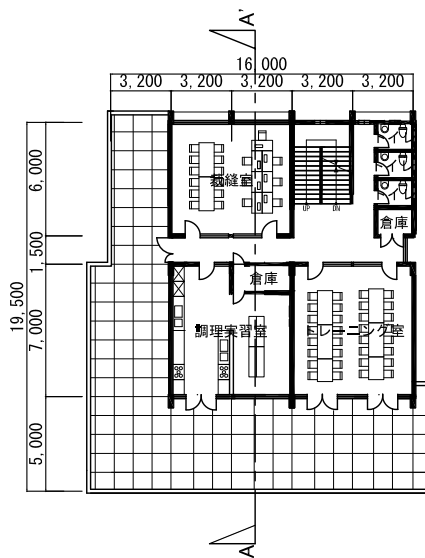
西側立面図 S=1:400



A-A' 断面図 S=1:400

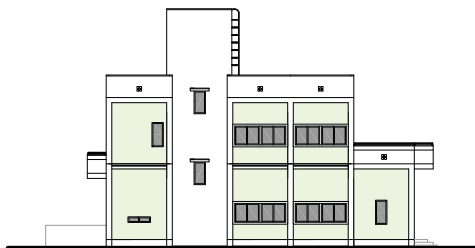
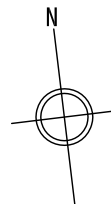


配置図兼1階平面図 S=1:400

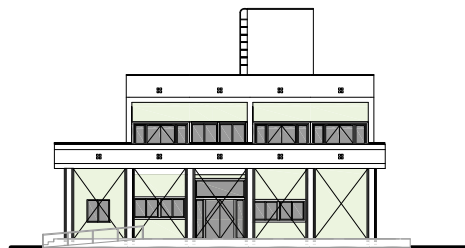


2階平面図 S=1:400

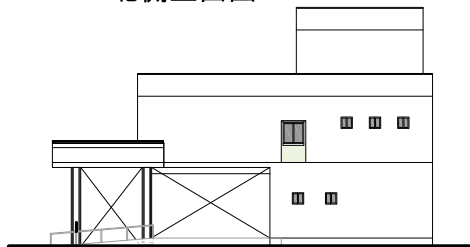
■: 既存建物範囲



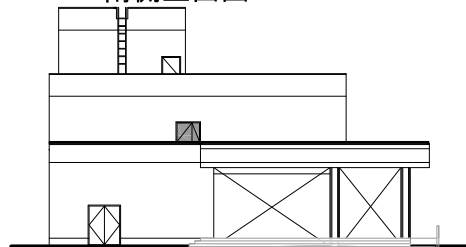
北側立面図 S=1:400



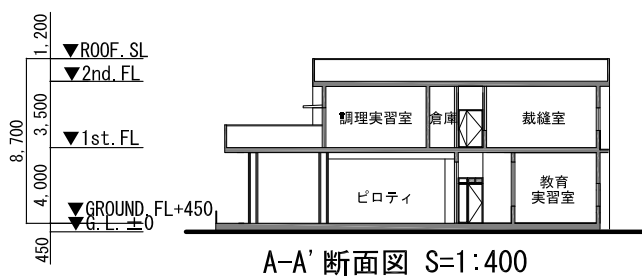
南側立面図 S=1:400



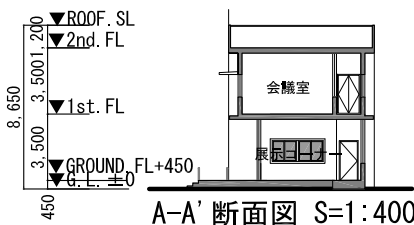
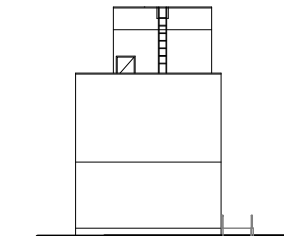
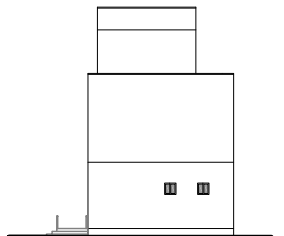
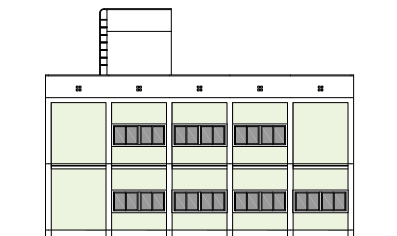
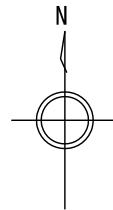
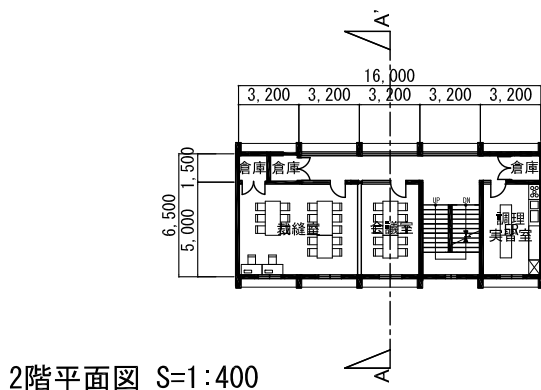
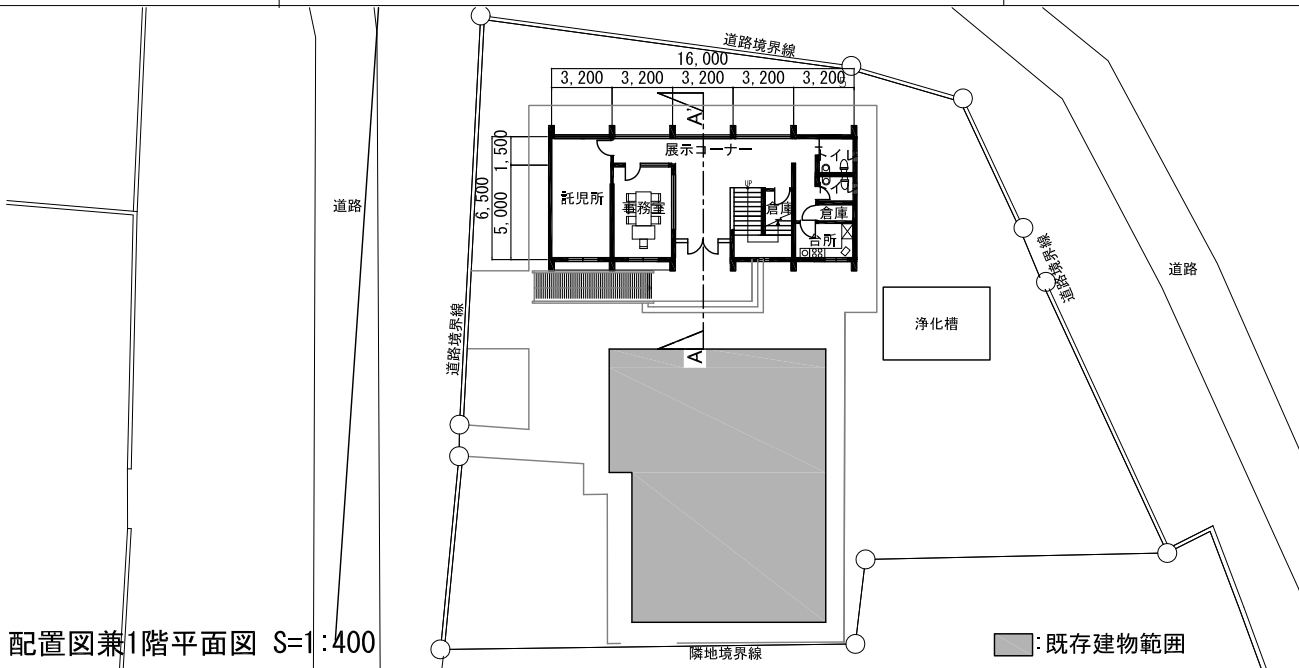
東側立面図 S=1:400

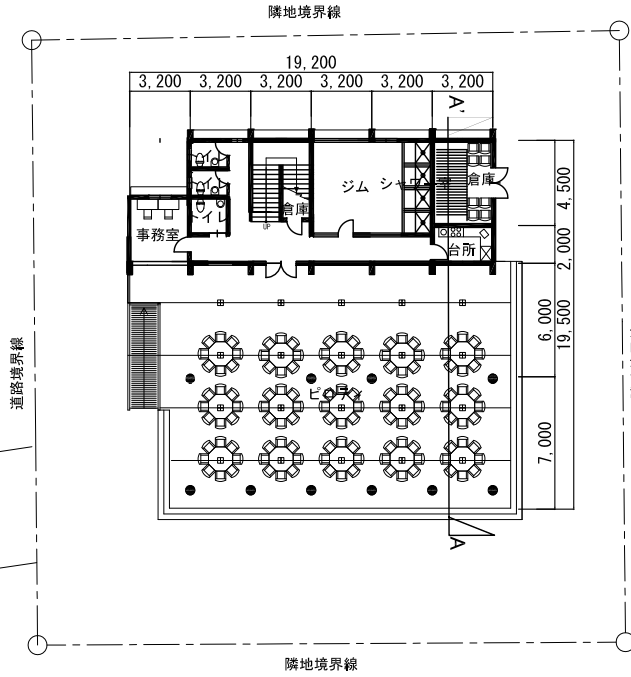


西側立面図 S=1:400

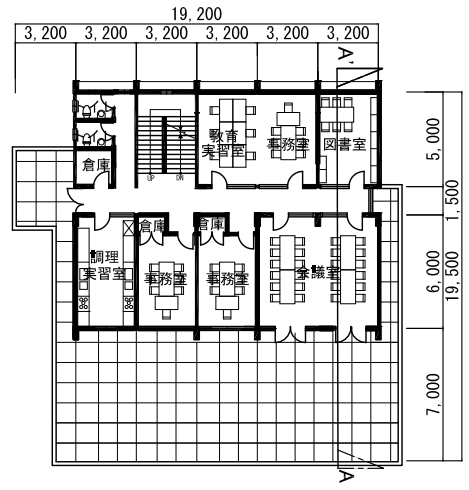


A-A' 断面図 S=1:400

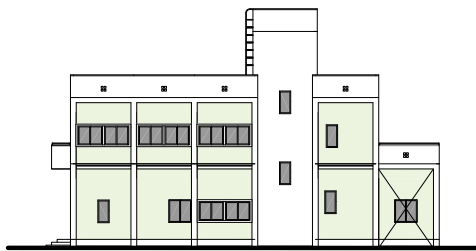




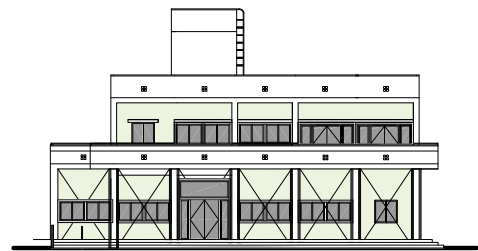
配置図兼1階平面図 S=1:400



2階平面図 S=1:400

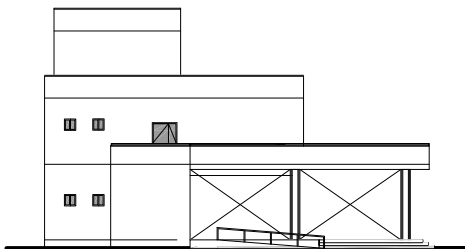


北側立面図 S=1:400

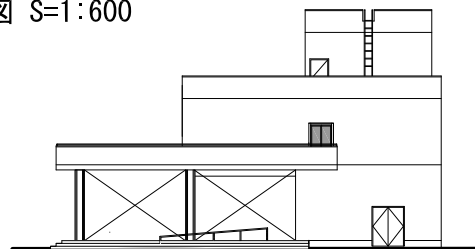


南側立面図 S=1:400

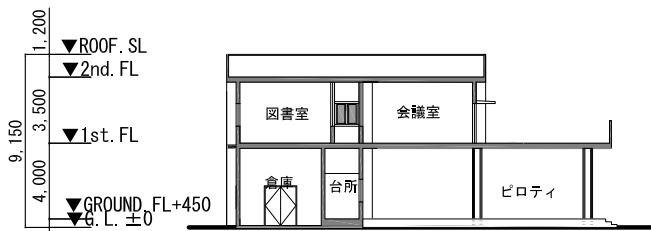
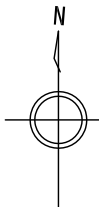
配置図 S=1:600



西側立面図 S=1:400



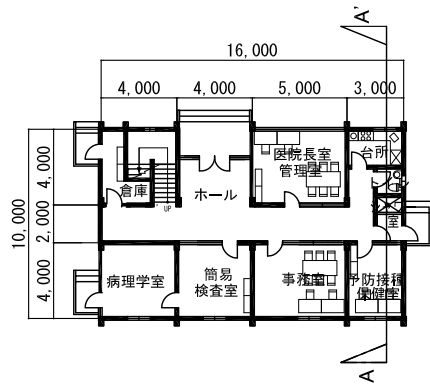
東側立面図 S=1:400



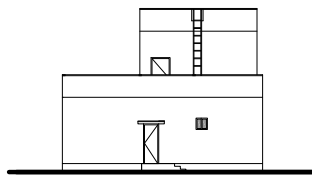
A-A' 断面図 S=1:400



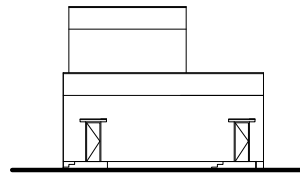
配置図 S=1:400



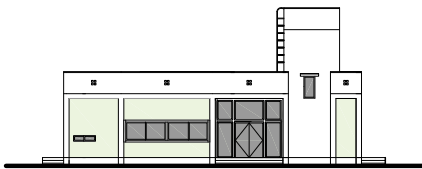
1階平面図 S=1:400



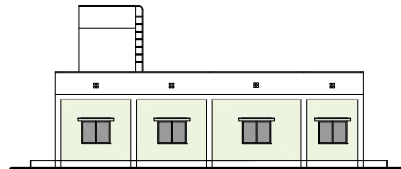
南立面図 S=1:400



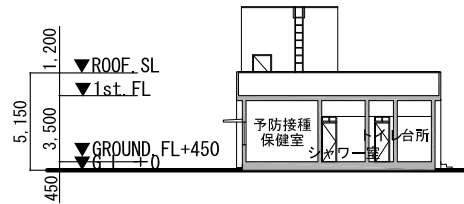
北立面図 S=1:400



東立面図 S=1:400

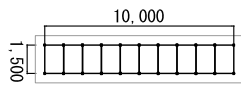


西立面図 S=1:400

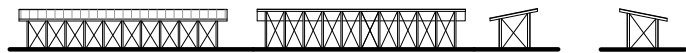


A-A' 断面図 S=1:400

家畜小屋 S=1:400



平面図



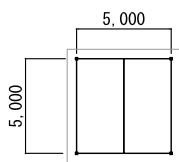
南立面図

北立面図

東立面図

西立面図

車庫 S=1:400



平面図

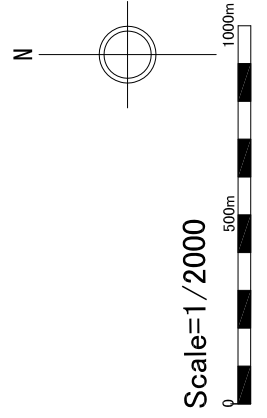


南立面図

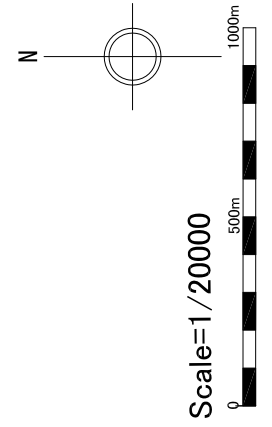
北立面図

東立面図

西立面図

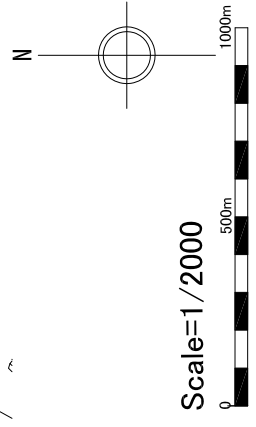


| |
|---------------|
| 凡例 |
| — 高優先度 (道路復興) |



| |
|---------------|
| 凡例 |
| — 高優先度 (道路復興) |

图-24

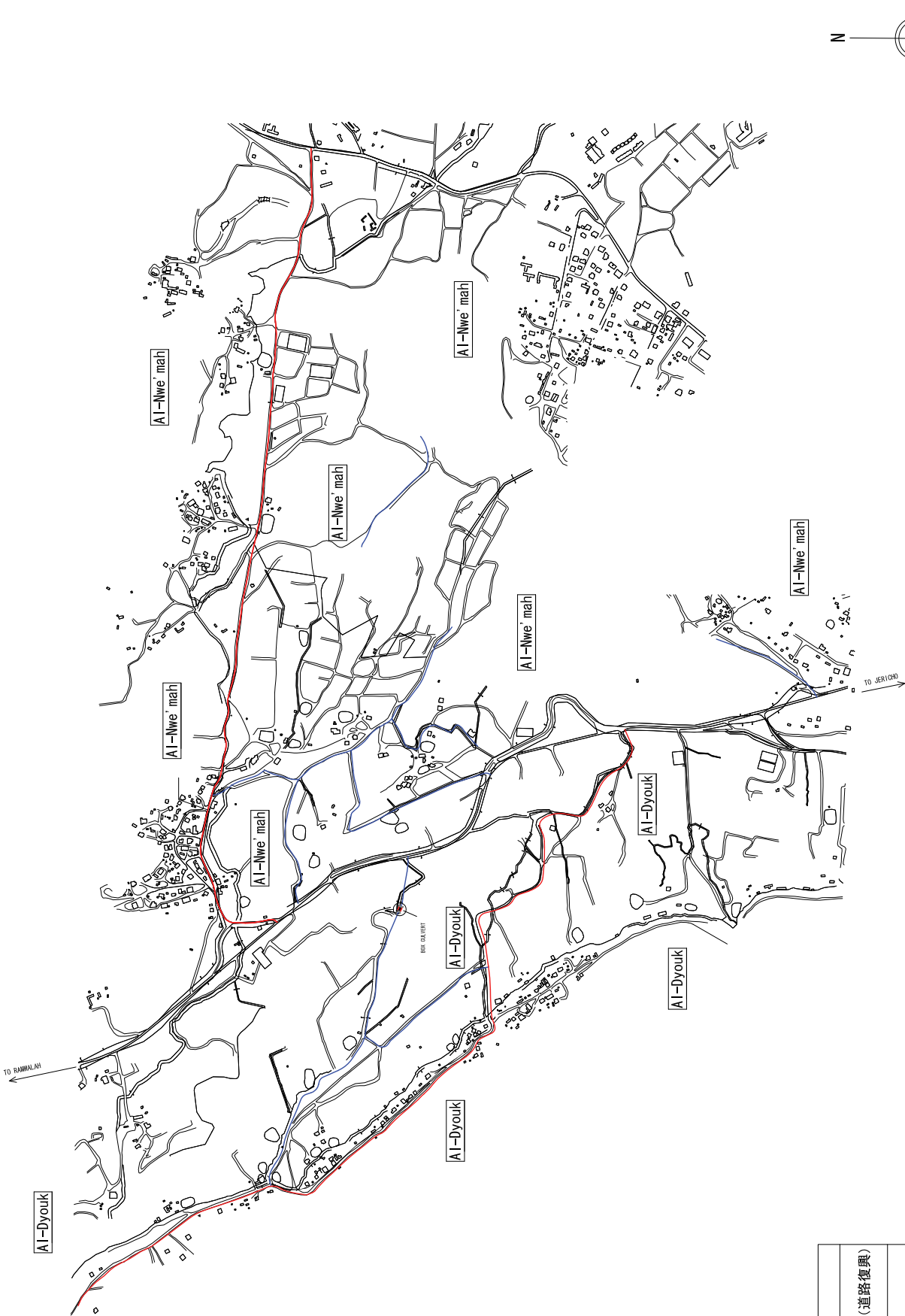


| |
|---------------|
| 凡例 |
| — 高優先度 (道路復興) |

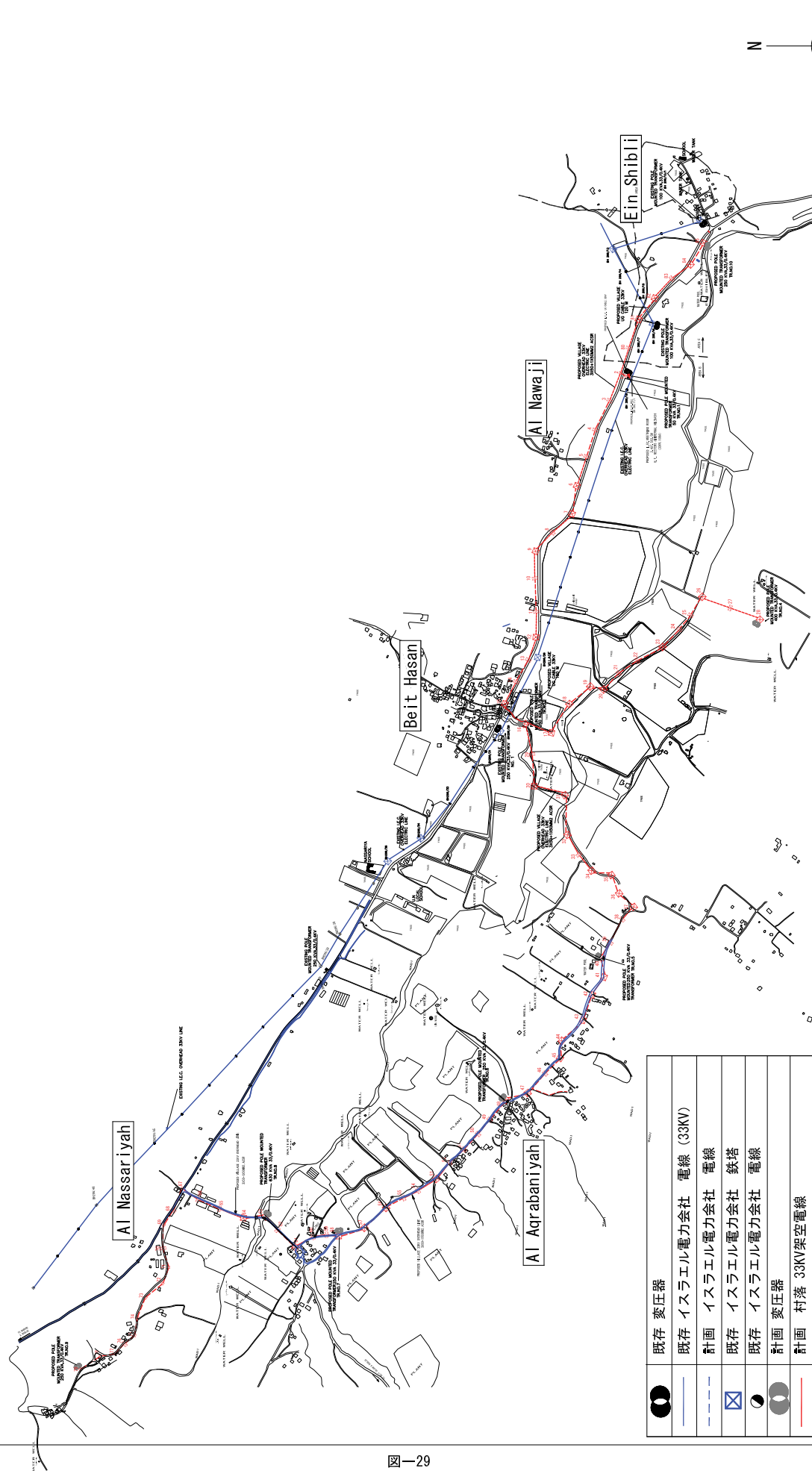
図-25



图-26



| | | |
|----|---|-------------|
| 凡例 | — | 高優先度 (道路復興) |
| | — | 高優先度 (道路修繕) |

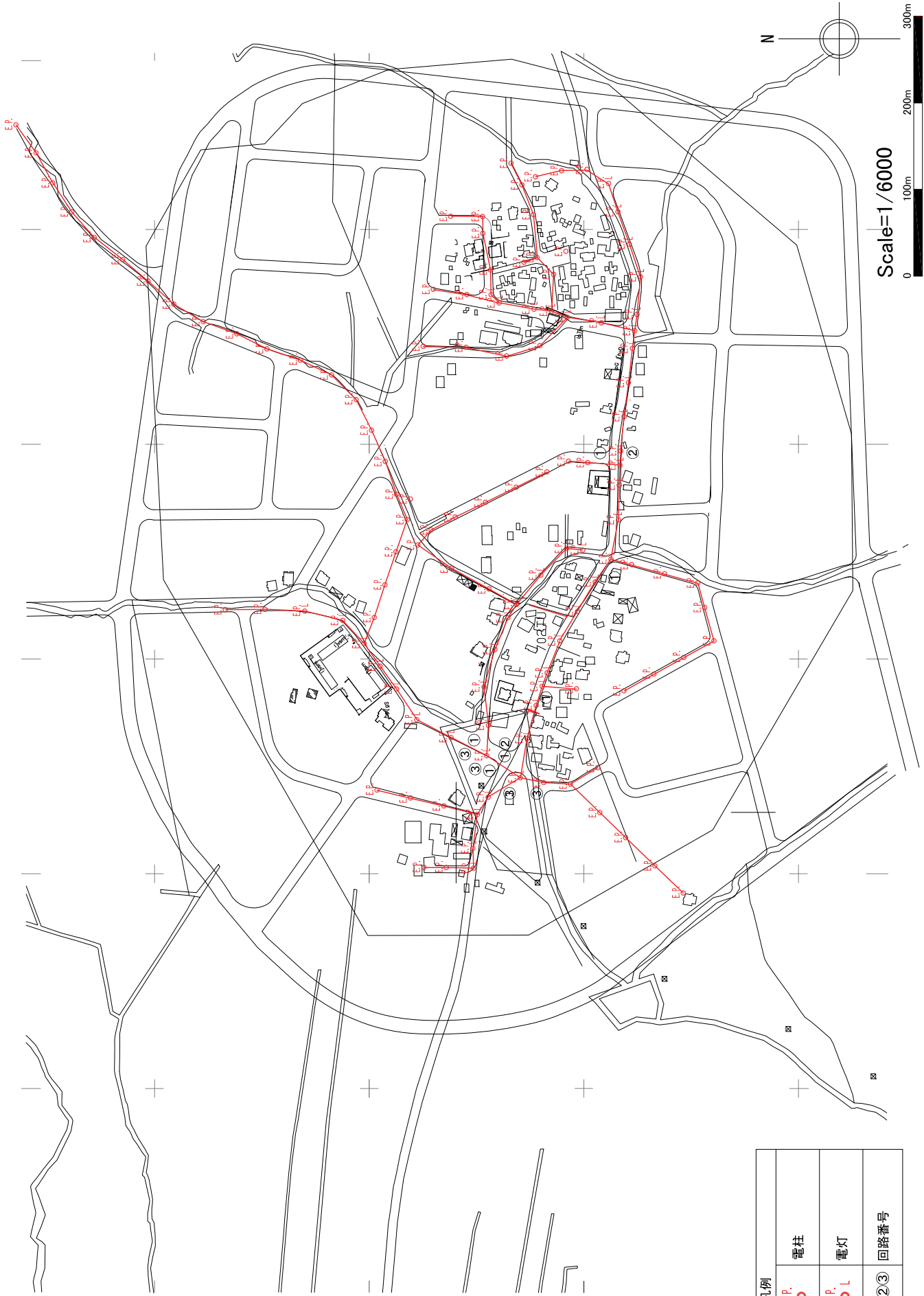


Scale=1/20000



| | |
|--|------------------------|
| | 既存 変圧器 |
| | 既存 イスラエル電力会社 電線 (33KV) |
| | 計画 イスラエル電力会社 電線 |
| | 既存 イスラエル電力会社 鉄塔 |
| | 既存 イスラエル電力会社 電線 |
| | 計画 変圧器 |
| | 計画 村落 33KV 架空電線 |
| | 計画 村落 33KV 地中電線 |
| | 計画 高圧電柱 |
| | 計画 U型電柱 |

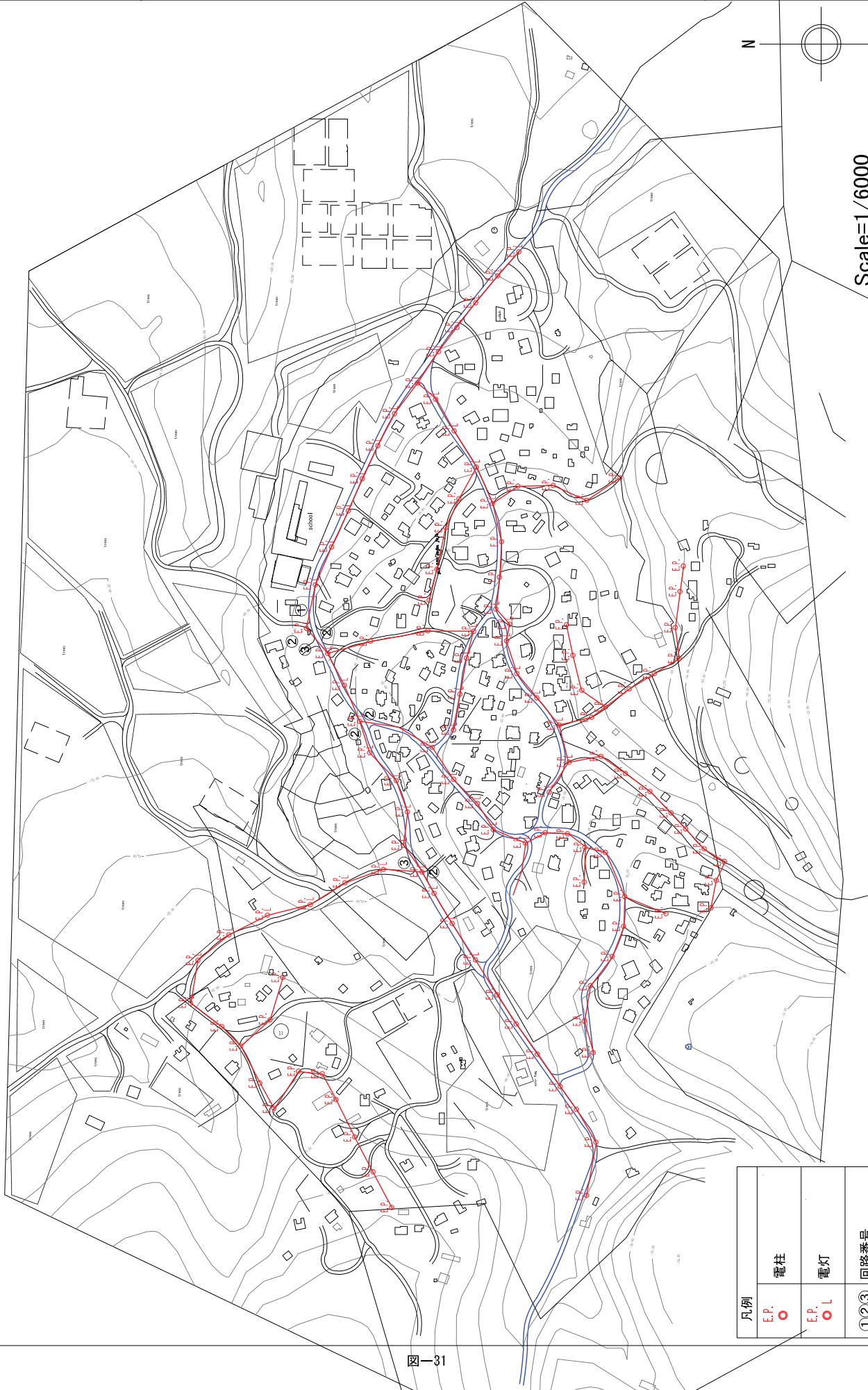
図-29



Scale=1/6000

| | |
|--------|------|
| 凡例 | |
| E.P. | 電柱 |
| E.P. L | 電灯 |
| ①②③ | 回路番号 |

图-30



Scale=1/6000



| | |
|----------|------|
| 凡例 | |
| E.P. ○ | 電柱 |
| E.P. ○ L | 電灯 |
| ①②③ | 回路番号 |

图-31