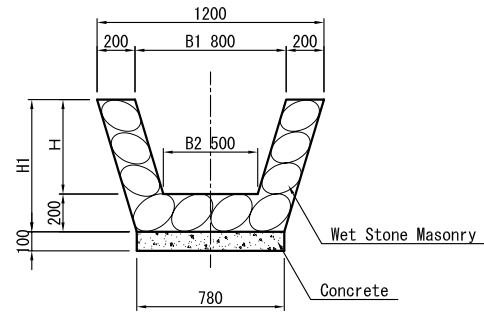


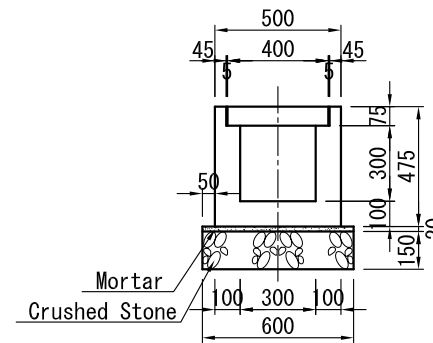
EARTH DITCH S=1:20



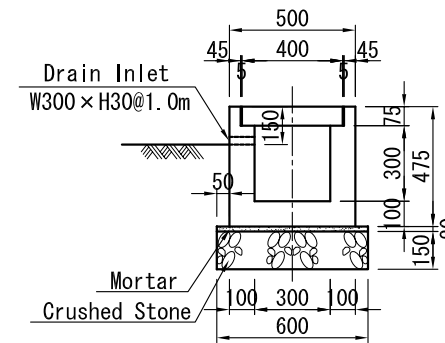
DIMENSION TABLE

Type	B x H	B1	B2	H	H1
1	800/500 x 400	800	500	400	600
2	800/500 x 500	800	500	500	700
3	800/500 x 600	800	500	600	800
4	800/500 x 700	800	500	700	900

MASONRY DITCH S=1:20

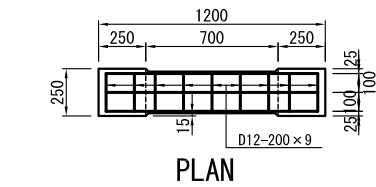


(TYPE-1)

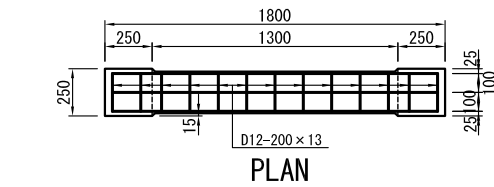


(TYPE-2)

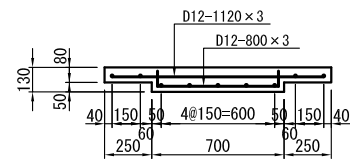
U-DITCH S=1:15



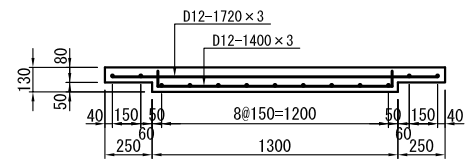
PLAN



PLAN

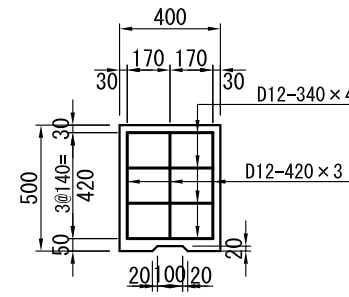


SECTION (TYPE-1)

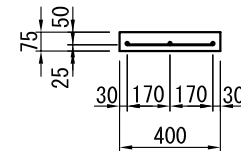


SECTION (TYPE-2)

MASONRY DITCH COVER S=1:20

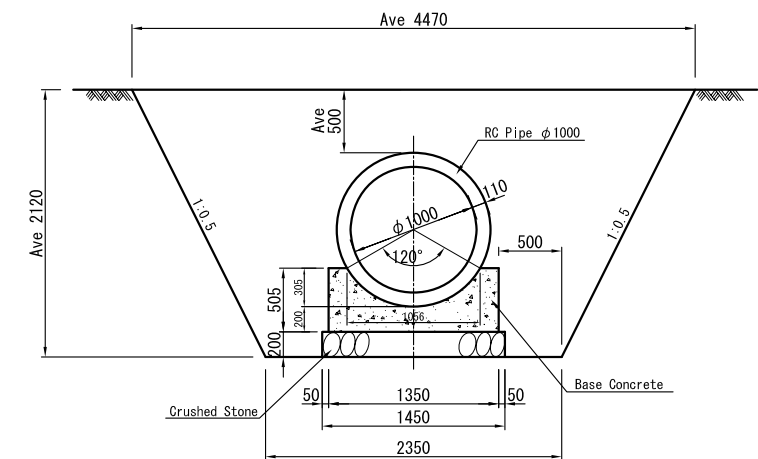


PLAN

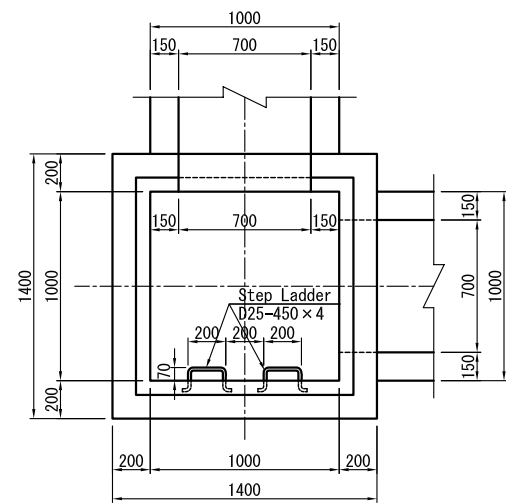


SECTION

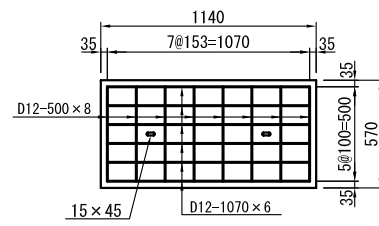
U-DITCH COVER S=1:15



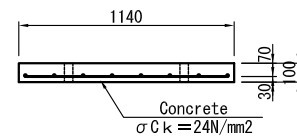
PIPE CULVERTS S=1:30



PLAN

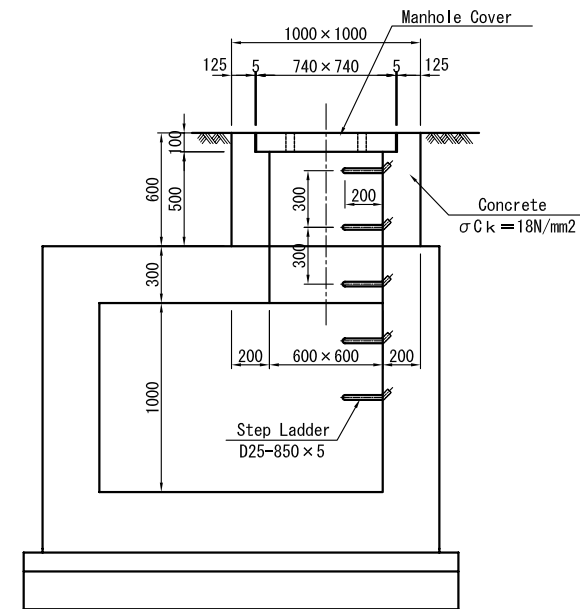


PLAN

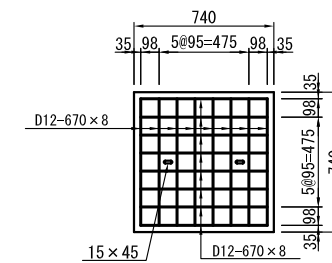


SECTION

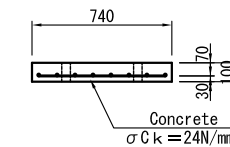
CATCH BASIN COVER S=1:20



MANHOLE S=1:20

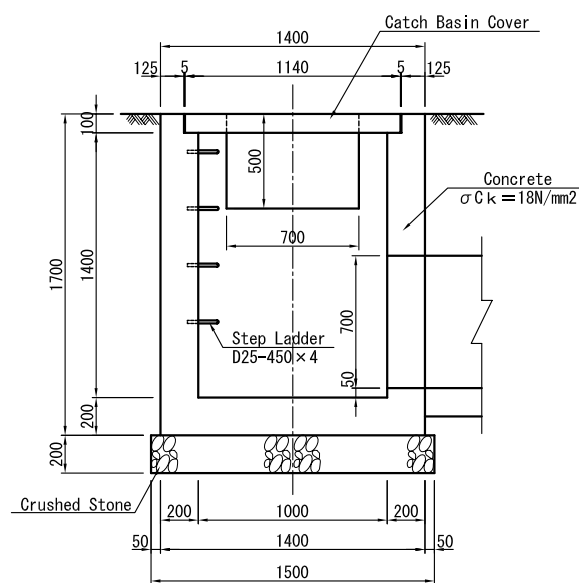


PLAN



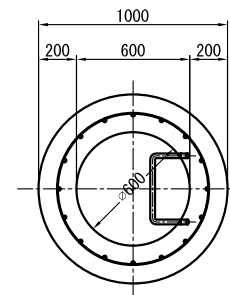
SECTION

MANHOLE COVER S=1:20

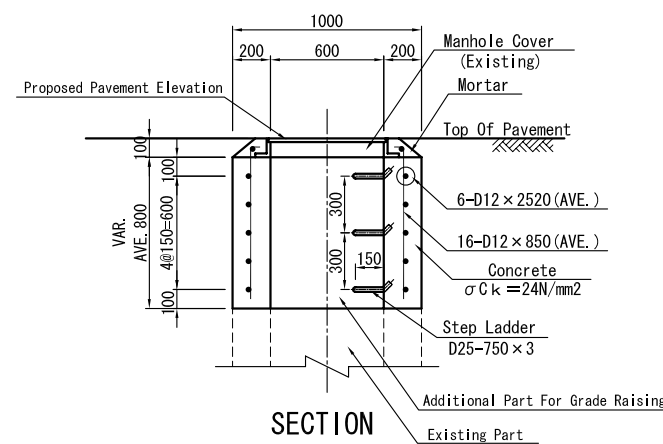


SECTION

CATCH BASIN S=1:20

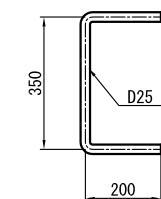
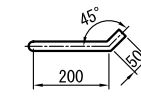


PLAN



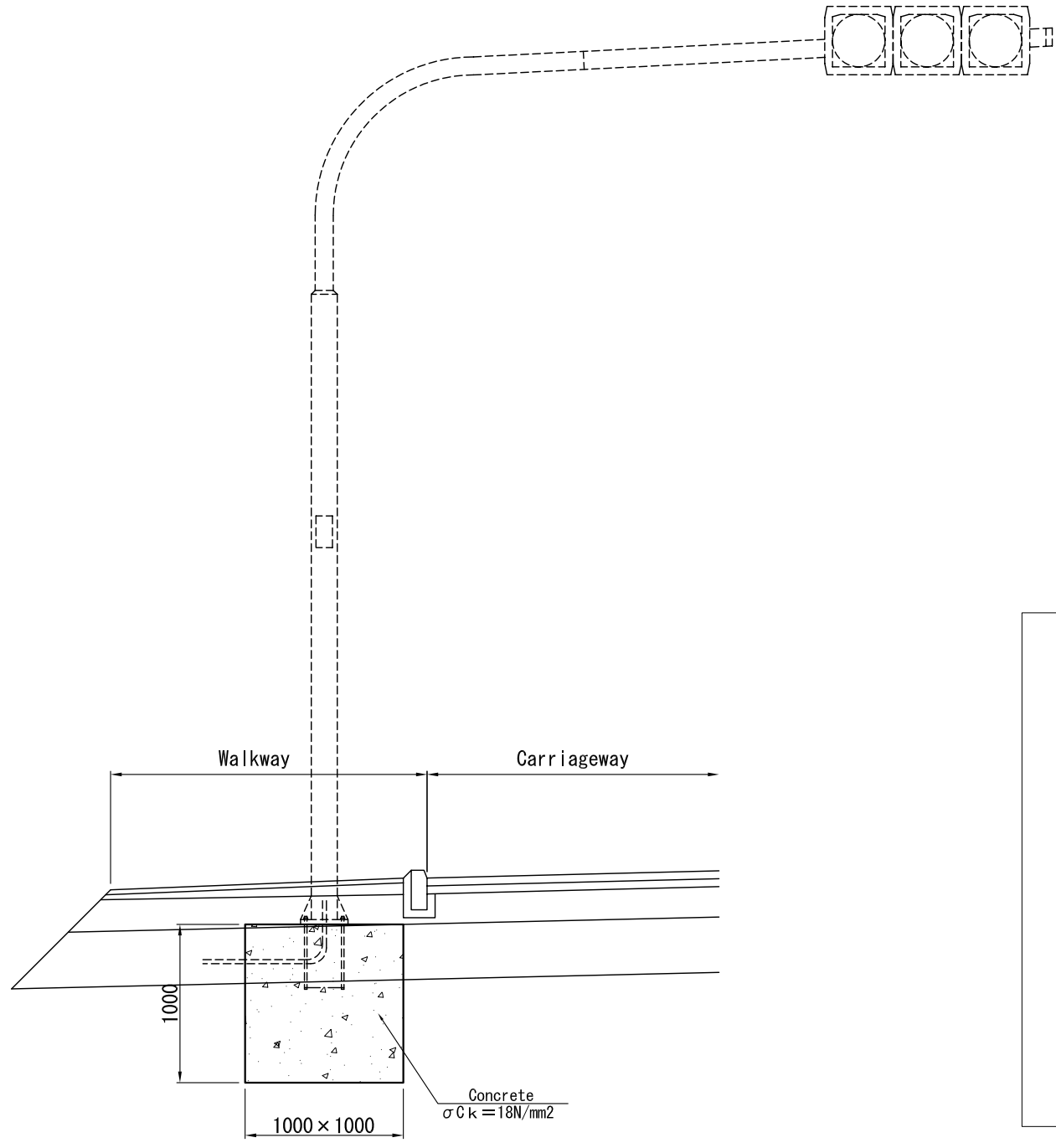
SECTION

MANHOLE RAISE S=1:20

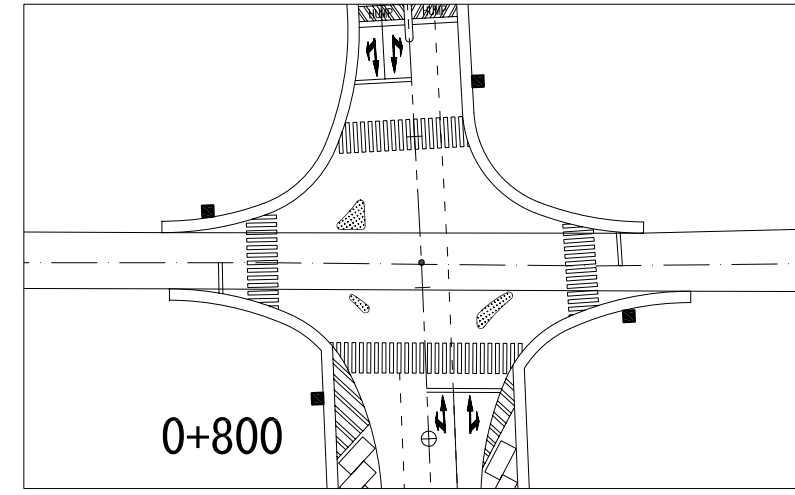


DETAIL OF STEP LADDER S=1:10

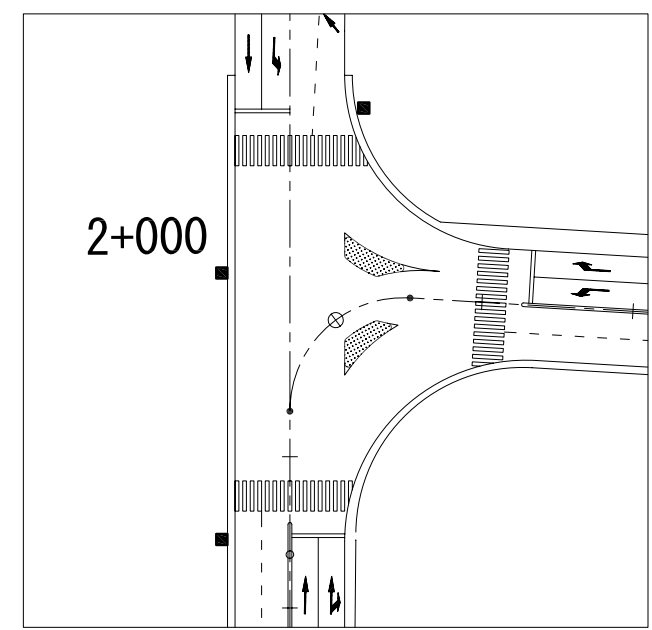




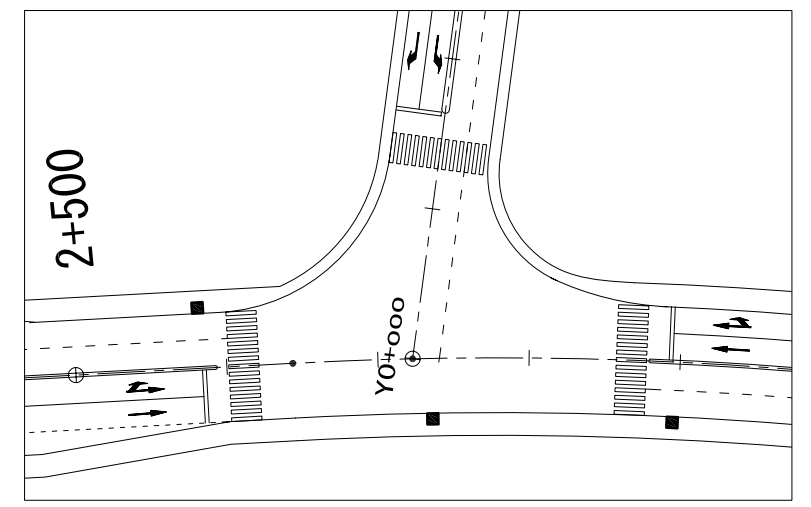
TRAFFIC POSTE FOUNDATION S=1:20



Y0+824 (NR3 CROSSING)



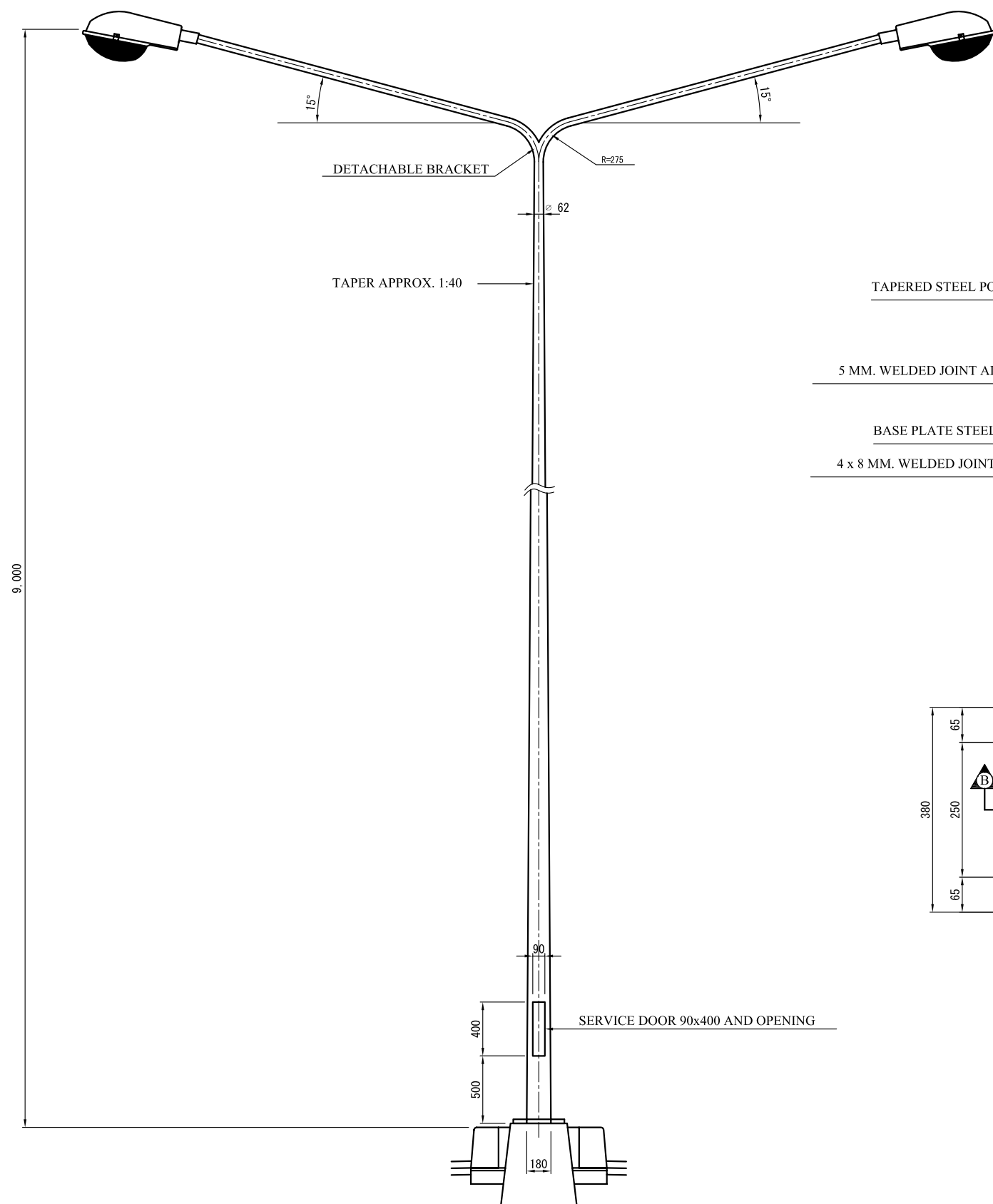
2+000 (INTERSECTION 3)



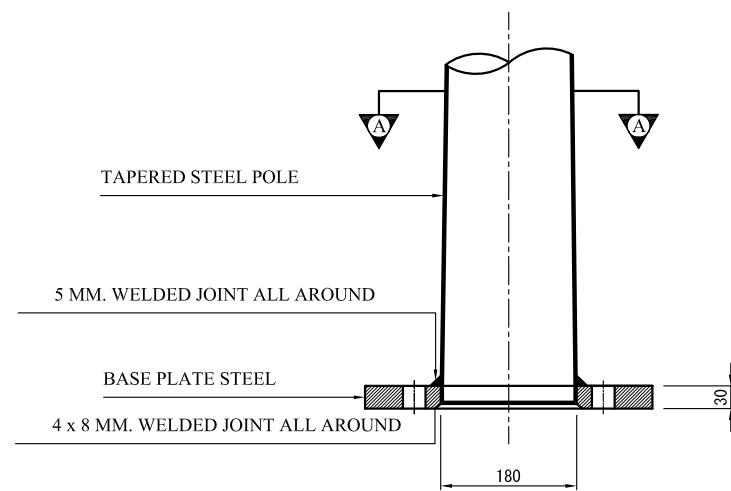
2+550 (INTERSECTION Y1)

LAYOUT DRAWING S=1:500

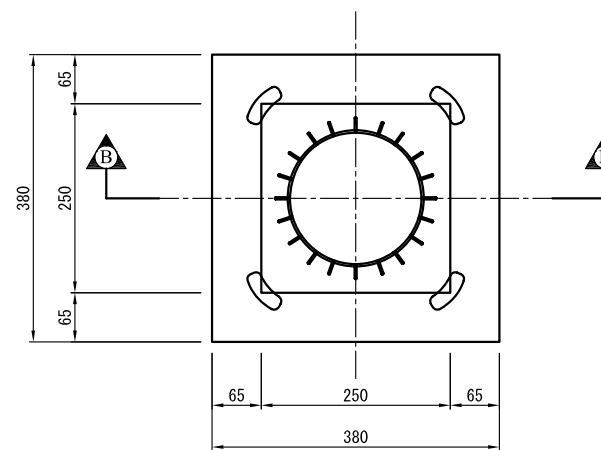
<p>L'OFFICE DES ROUTES THE REPUBLIC OF BURUNDI</p>	<p>THE BASIC DESIGN STUDY ON THE GRANT AID FOR REHABILITATION OF ROADS AND INFRASTRUCTURE FOR BUJUMBURA CITY IN THE REPUBLIC OF BURUNDI</p>	<p>JAPAN INTERNATIONAL COOPERATION AGENCY CTI ENGINEERING INTERNATIONAL CO., LTD.</p>	<p>TITLE : DETAILS OF TRAFFIC POSTE FOUNDATION</p>	<p>SCALE AS SHOWN</p>	<p>Drawing No. M-14</p>	<p>/</p>
--	---	---	--	---------------------------	-----------------------------	----------



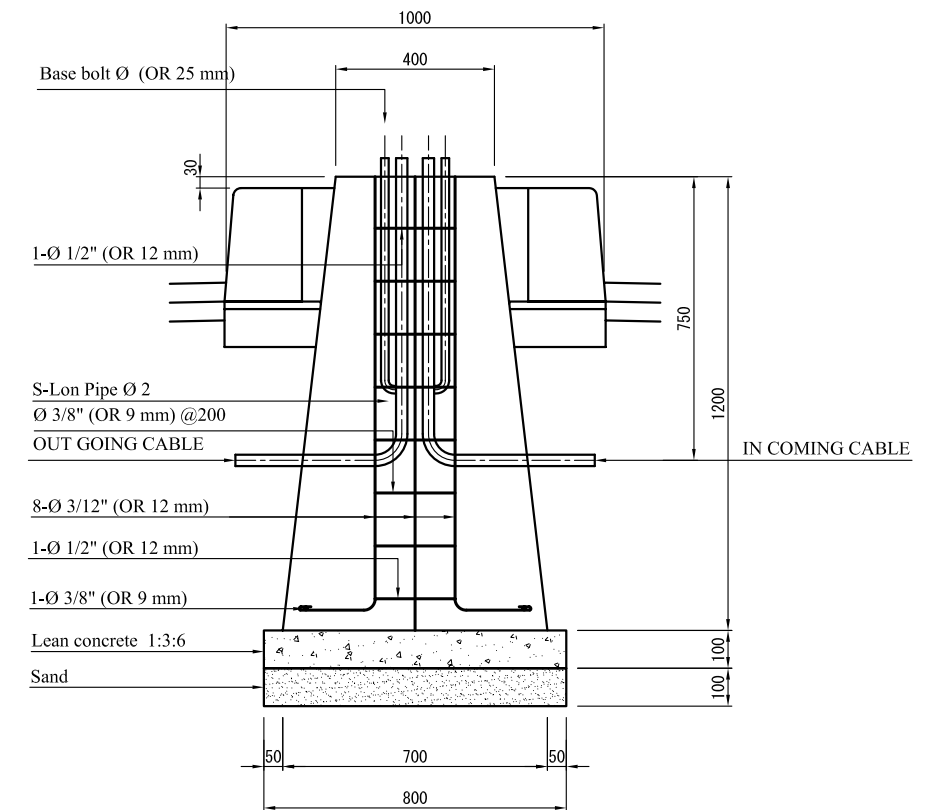
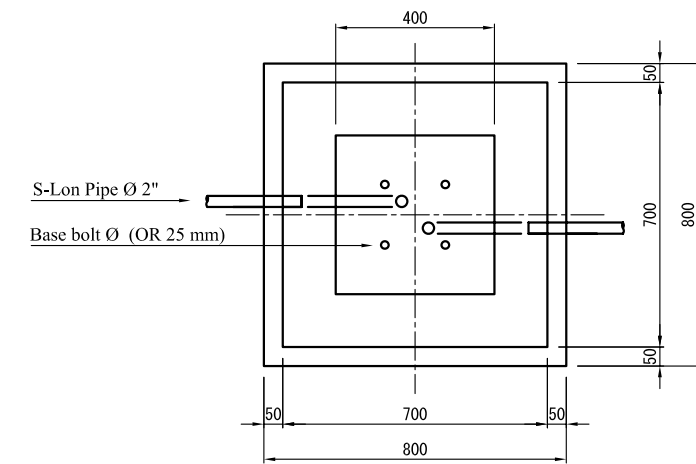
GENERAL VIEW OF LIGHTNING POLE S=1:20  
TYPE-1 (DOUBLE LAMP)



SECTION B-B S=1:5



SECTION A-A S=1:5



LIGHTING POLE FOUNDATION DETAILS S=1:10

L'OFFICE DES ROUTES  
THE REPUBLIC OF BURUNDI

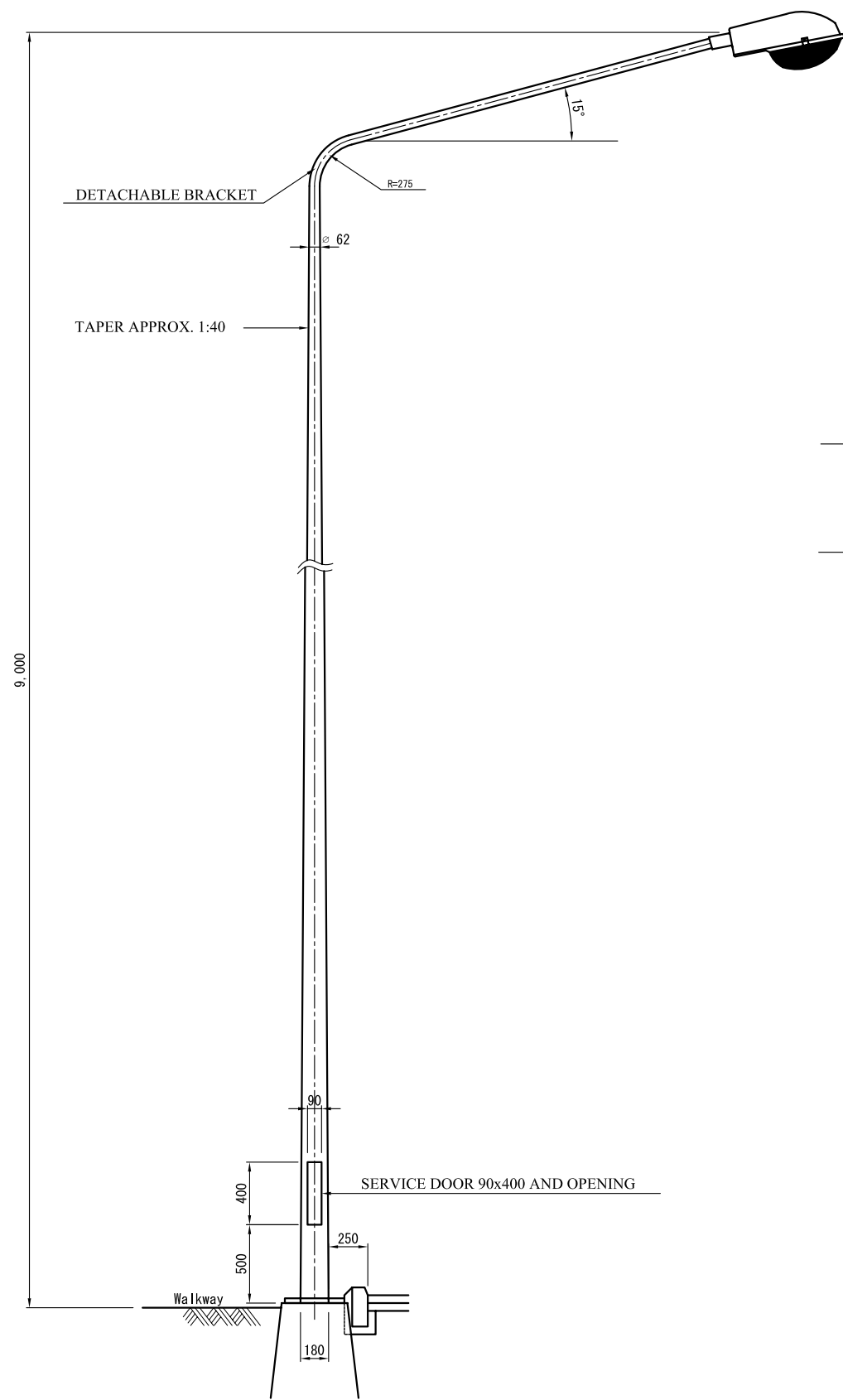
THE BASIC DESIGN STUDY  
ON THE GRANT AID FOR REHABILITATION OF  
ROADS AND INFRASTRUCTURE FOR BUJUMBURA CITY  
IN THE REPUBLIC OF BURUNDI

JAPAN INTERNATIONAL COOPERATION AGENCY  
CTI ENGINEERING INTERNATIONAL CO., LTD.

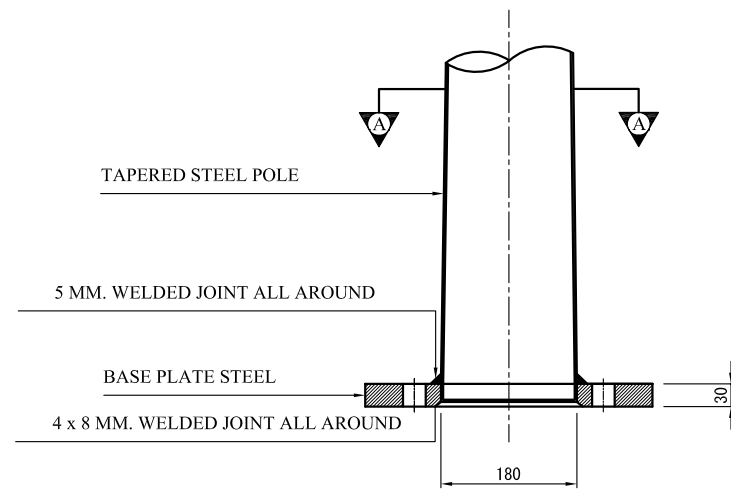
TITLE :  
ROAD LIGHTING FACILITIES  
TYPE-1 (DOUBLE LAMP)

SCALE  
AS SHOWN

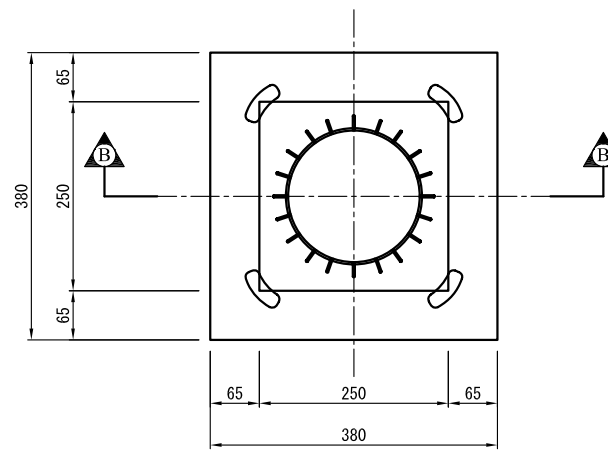
Drawing No.  
M-15



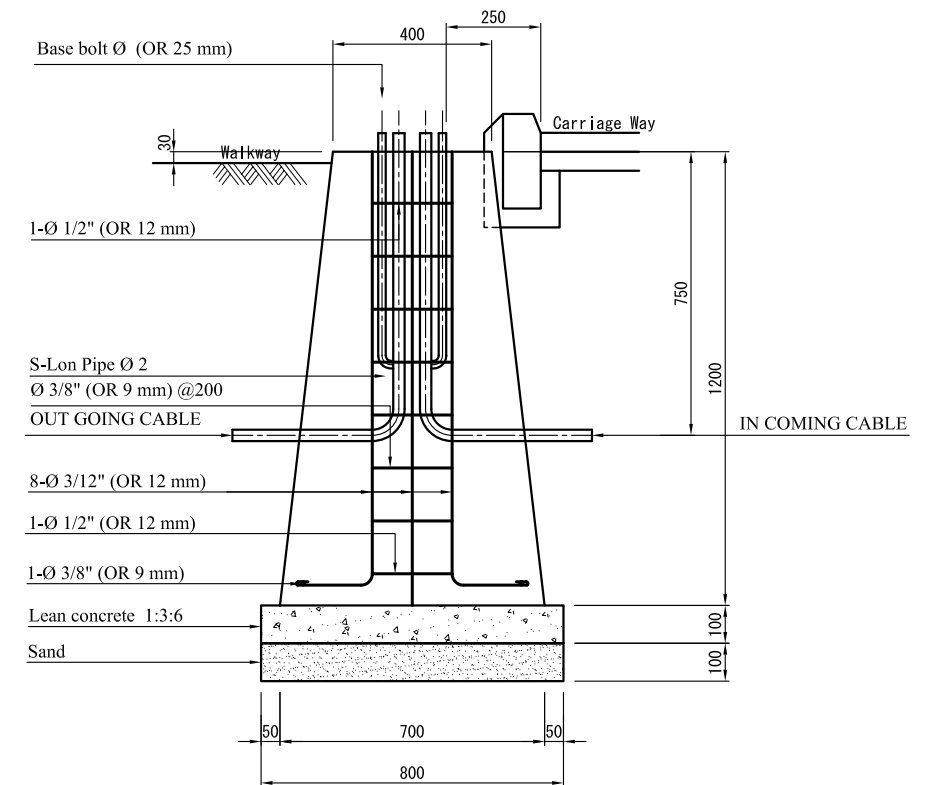
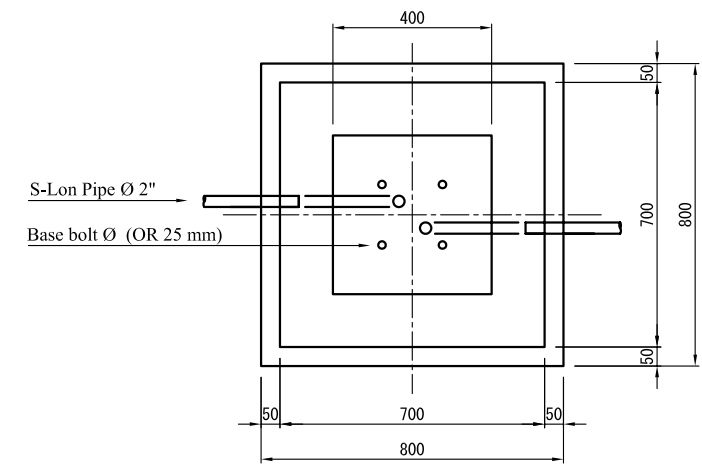
GENERAL VIEW OF LIGHTING POLE S=1:20  
TYPE-2 (SINGLE LAMP)



SECTION B-B S=1:5

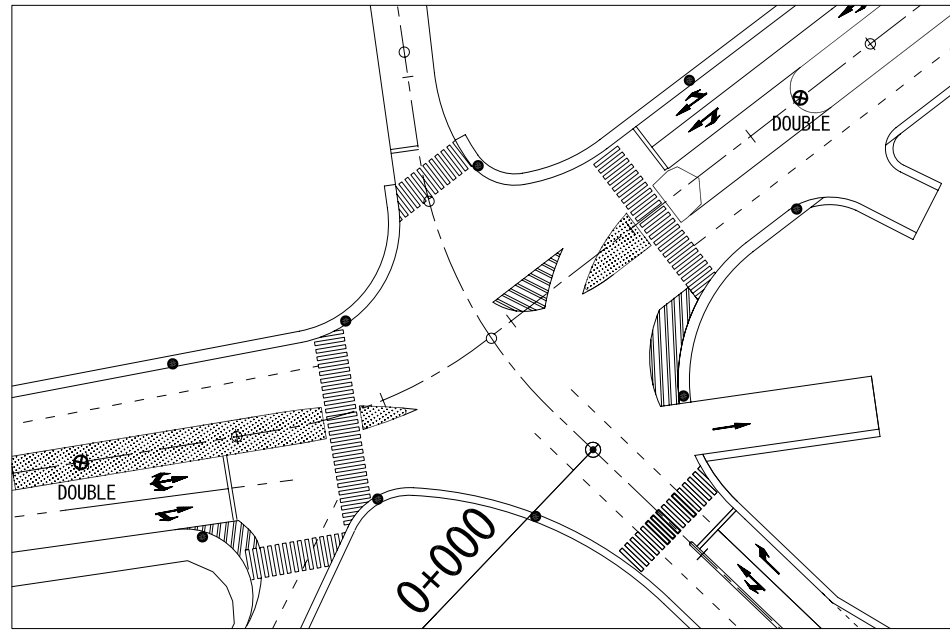


SECTION A-A S=1:5

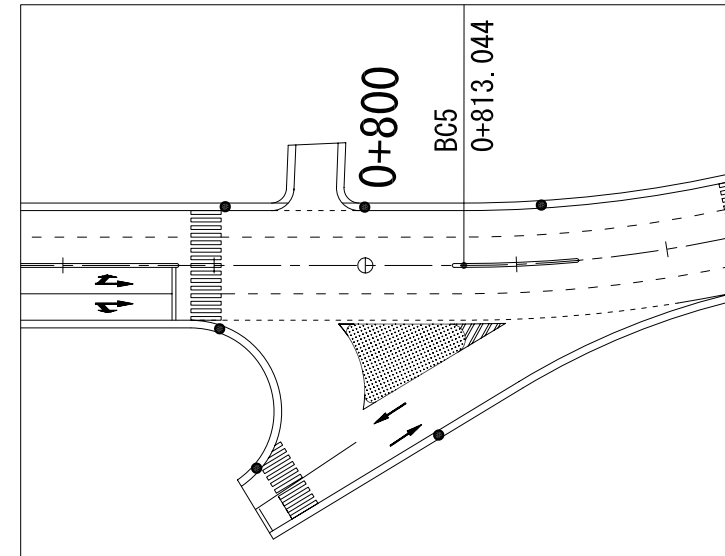


LIGHTING POLE FOUNDATION DETAILS S=1:10

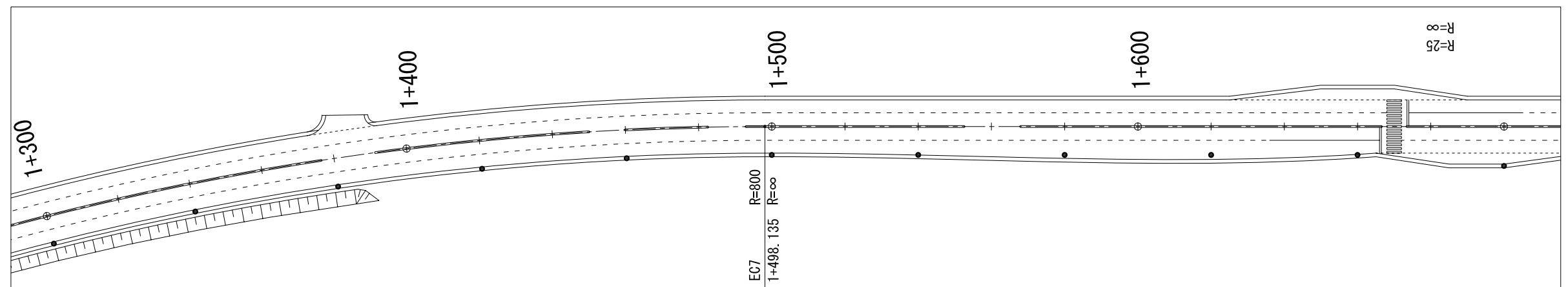
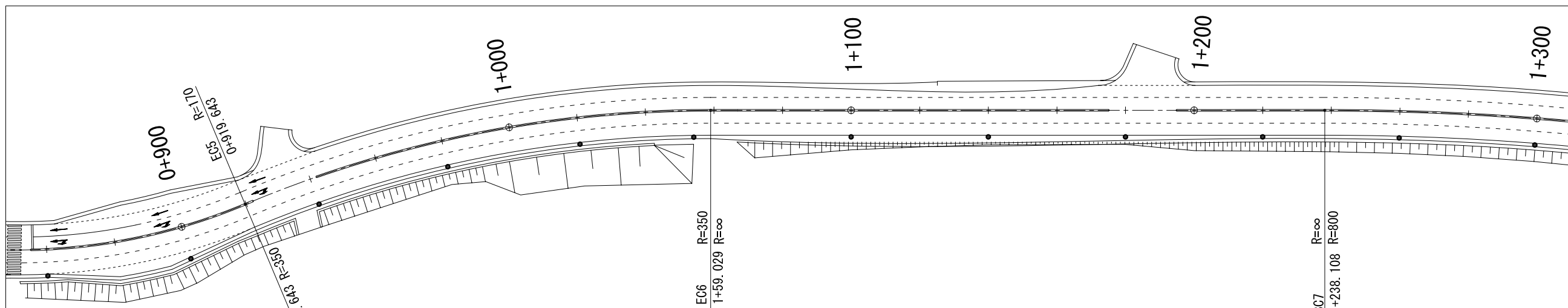
L'OFFICE DES ROUTES THE REPUBLIC OF BURUNDI	THE BASIC DESIGN STUDY ON THE GRANT AID FOR REHABILITATION OF ROADS AND INFRASTRUCTURE FOR BUJUMBURA CITY IN THE REPUBLIC OF BURUNDI	JAPAN INTERNATIONAL COOPERATION AGENCY CTI ENGINEERING INTERNATIONAL CO., LTD.	TITLE : ROAD LIGHTING FACILITIES TYPE-2 (SINGLE LAMP)	SCALE AS SHOWN	Drawing No. M-16	/
--	---	---	---	-------------------	---------------------	---



0+000 (INTERSECTION 1) S=1:500

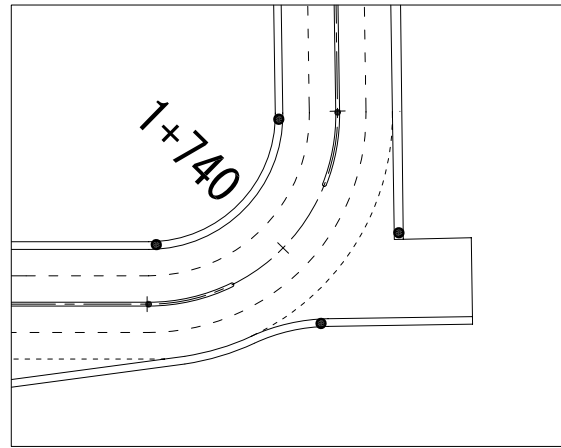


0+800 (INTERSECTION 2) S=1:500

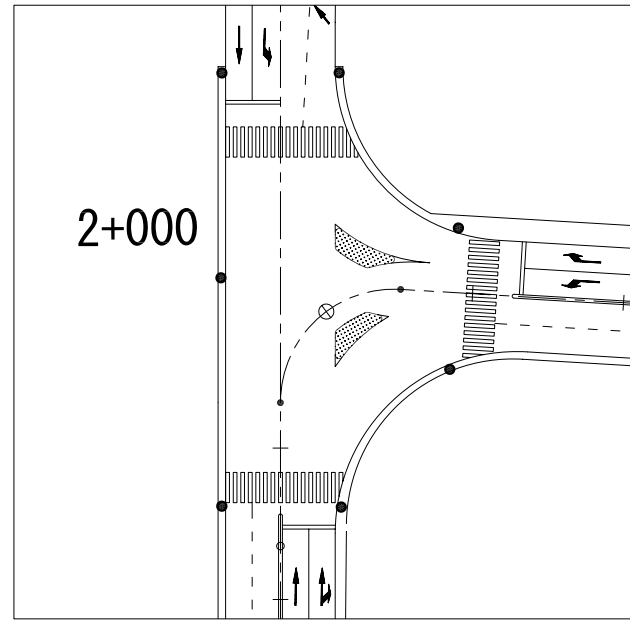


0+840 - 1+700 (RIGHT SIDE) S=1:750

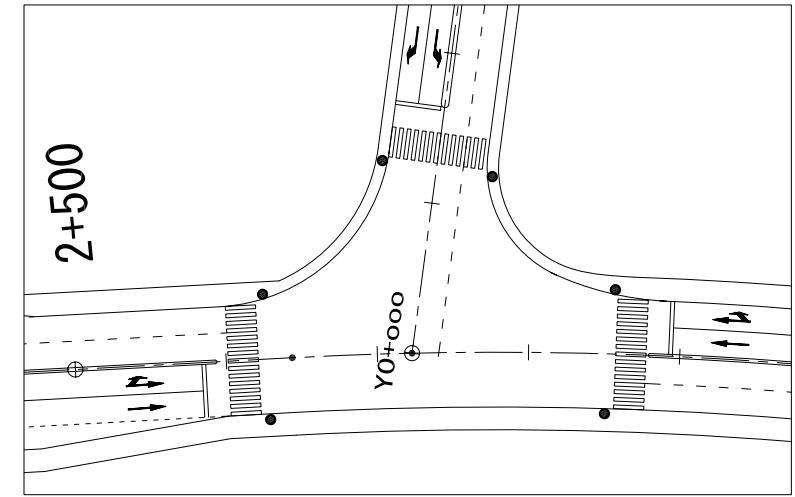
<p>L'OFFICE DES ROUTES THE REPUBLIC OF BURUNDI</p>	<p>THE BASIC DESIGN STUDY ON THE GRANT AID FOR REHABILITATION OF ROADS AND INFRASTRUCTURE FOR BUJUMBURA CITY IN THE REPUBLIC OF BURUNDI</p>	<p>JAPAN INTERNATIONAL COOPERATION AGENCY CTI ENGINEERING INTERNATIONAL CO., LTD.</p>	<p>TITLE : ROAD LIGHTING FACILITIES (LAYOUT DRAWING -1/2)</p>	<p>SCALE AS SHOWN</p>	<p>Drawing No. M-17</p>	<p>/</p>
--	---	---	---	---------------------------	-----------------------------	----------



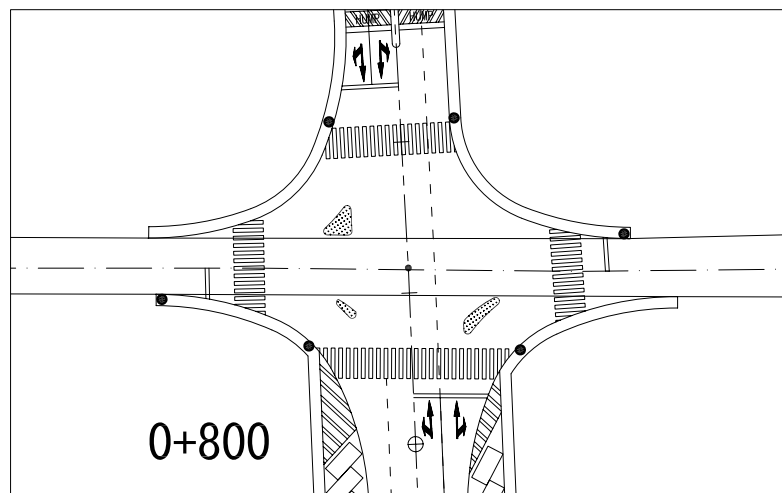
1+740 S=1:500



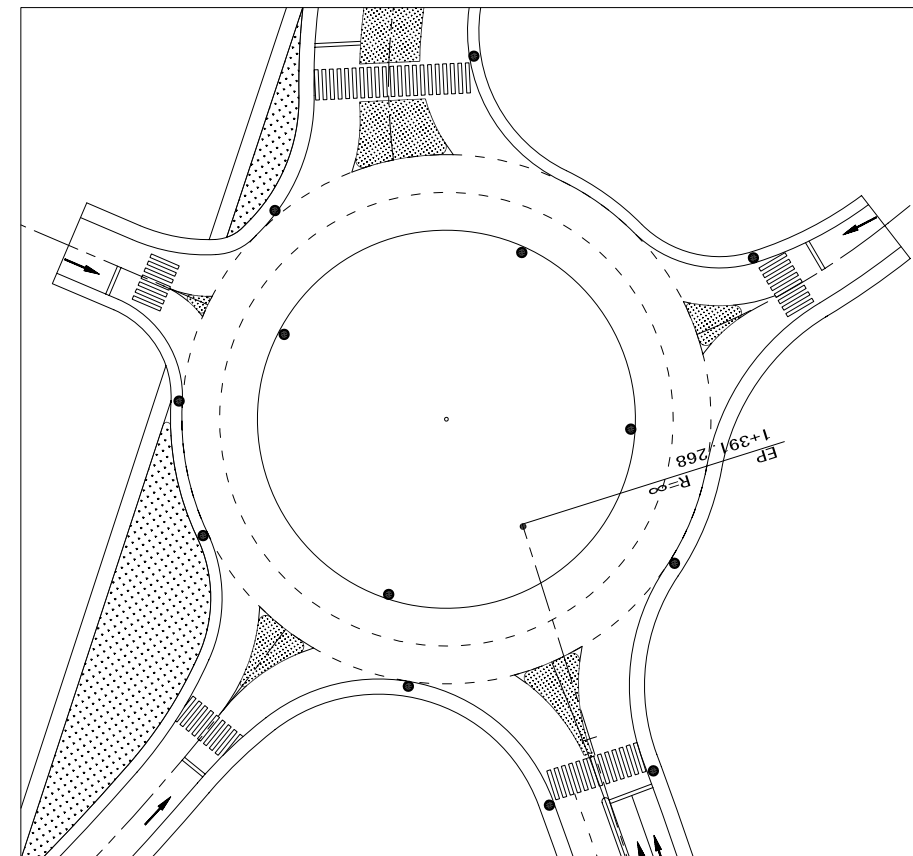
2+000 (INTERSECTION 3)



Y0+000 (INTERSECTION Y1)

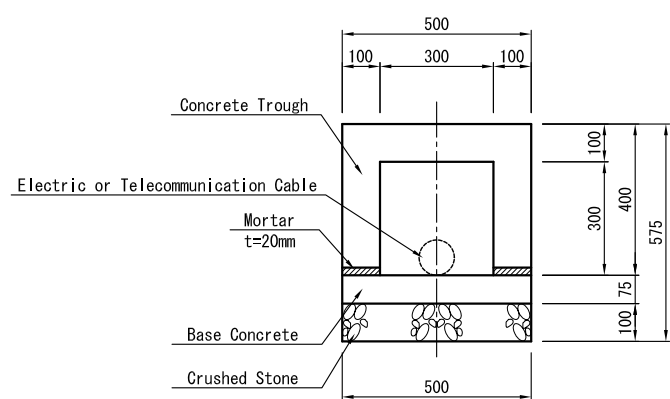


0+800  
Y0+820 (INTERSECTION Y2)

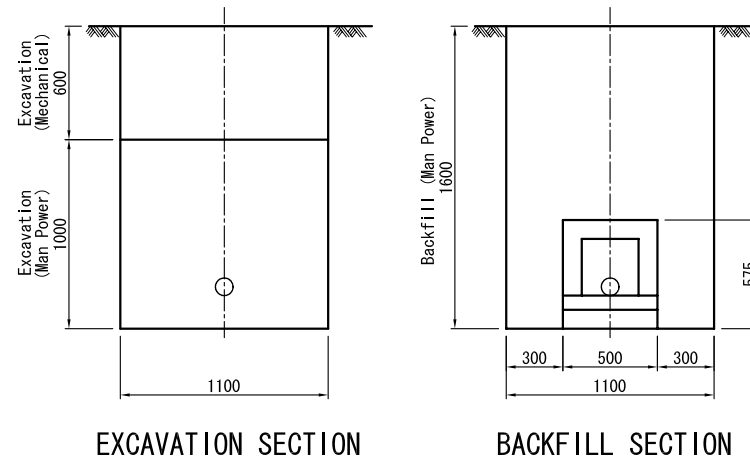


Y1+390 (INTERSECTION Y3)

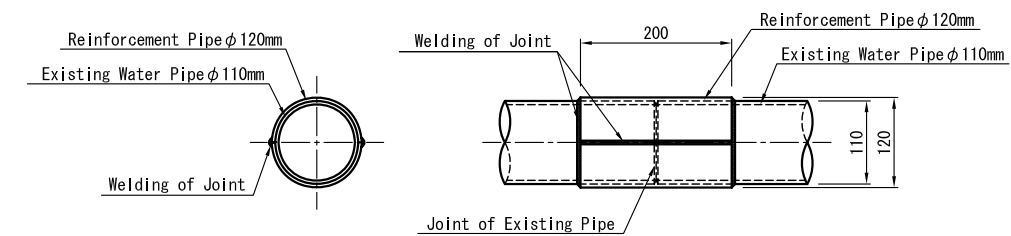




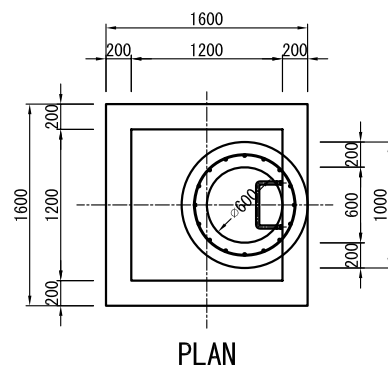
Details of Protection of Underground Utilities S=1:10



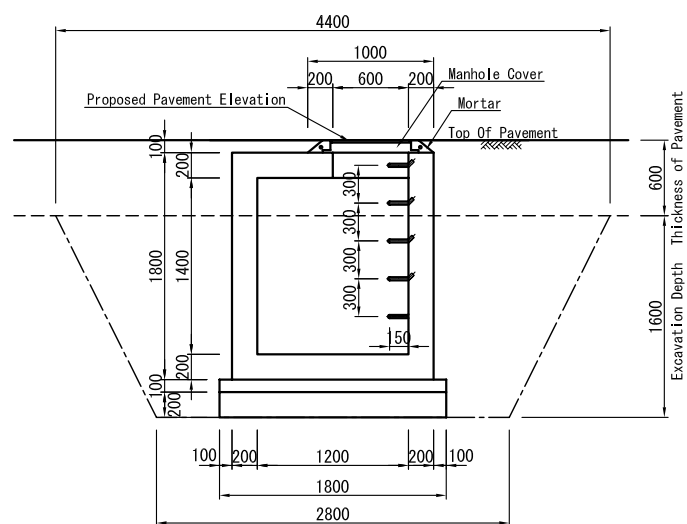
Details of Earth works for Concrete Trough S=1:20



Details of Reinforcement of Existing Water Pipe Joints S=1:5

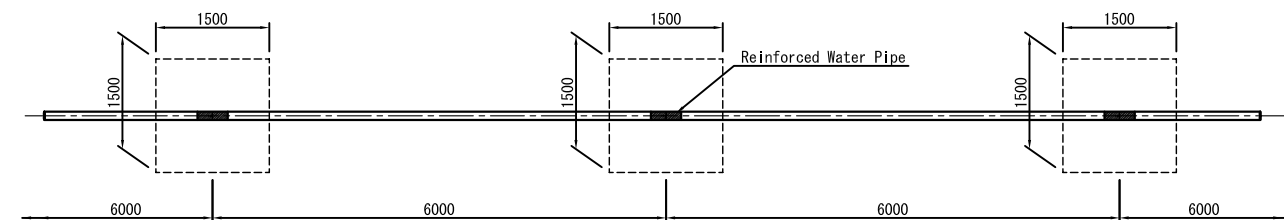


PLAN

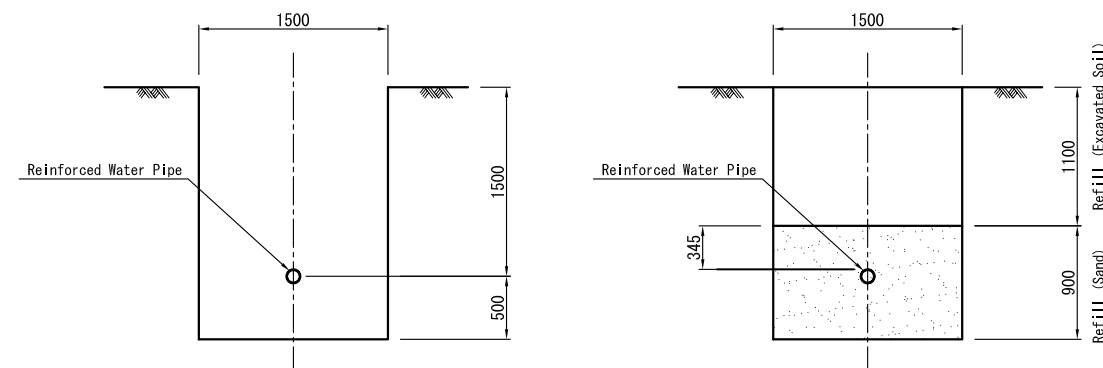


SECTION

Details of Manholes (Electric/Telecommunication Cables) S=1:30



Details of Earth Works for Reinforcement of Water Pipe S=1:50



EXCAVATION SECTION

BACKFILL SECTION

Details of Earth works for Water Pipe S=1:30

NOTES:

1. All dimensions are in millimeters unless otherwise indicated.
2. Manholes for Maintenance purpose are to be provided at an interval of 50 meters.
3. The interval for excavation is decided by assuming the joints of the existing water pipes and needs verification at the site.
4. The excavated ditch shall be refilled as shown in the drawings and compacted adequately.

L'OFFICE DES ROUTES THE REPUBLIC OF BURUNDI	THE BASIC DESIGN STUDY ON THE GRANT AID FOR REHABILITATION OF ROADS AND INFRASTRUCTURE FOR BUJUMBURA CITY IN THE REPUBLIC OF BURUNDI	JAPAN INTERNATIONAL COOPERATION AGENCY CTI ENGINEERING INTERNATIONAL CO., LTD.	TITLE : Details of Protection and Reinforcement Methods of Underground Utilities	SCALE	Drawing No.
				AS SHOWN	M-19