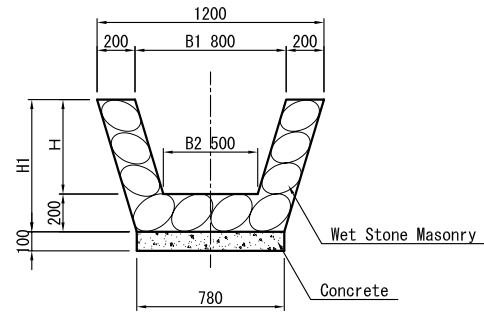


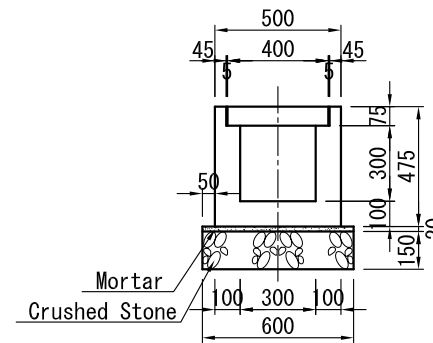
EARTH DITCH S=1:20



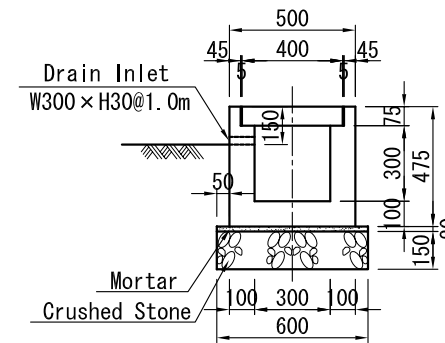
DIMENSION TABLE

Type	B x H	B1	B2	H	H1
1	800/500 x 400	800	500	400	600
2	800/500 x 500	800	500	500	700
3	800/500 x 600	800	500	600	800
4	800/500 x 700	800	500	700	900

MASONRY DITCH S=1:20

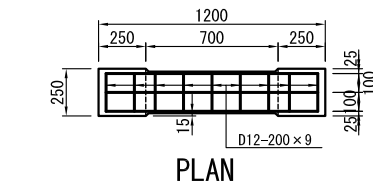


(TYPE-1)

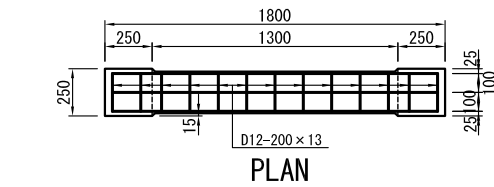


(TYPE-2)

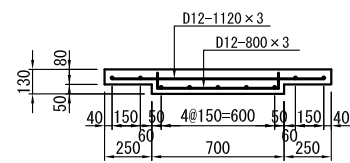
U-DITCH S=1:15



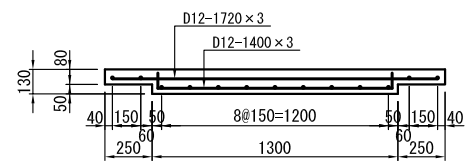
PLAN



PLAN

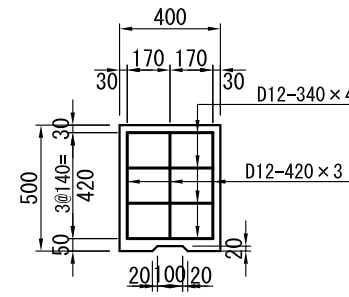


SECTION (TYPE-1)

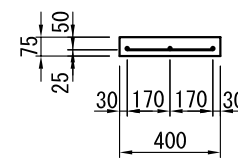


SECTION (TYPE-2)

MASONRY DITCH COVER S=1:20

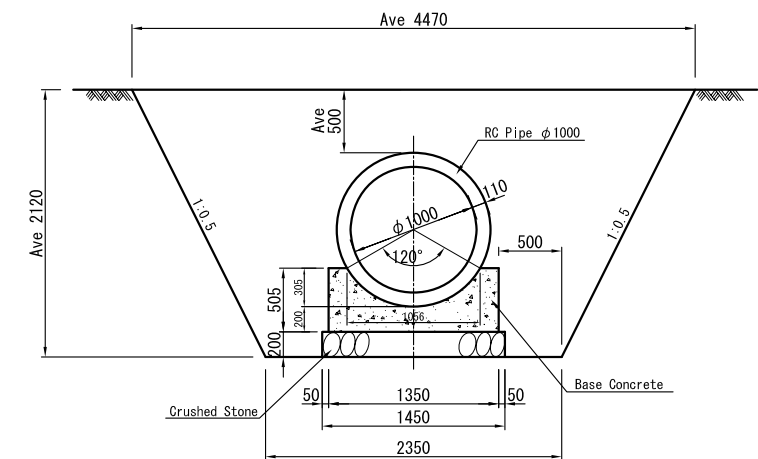


PLAN

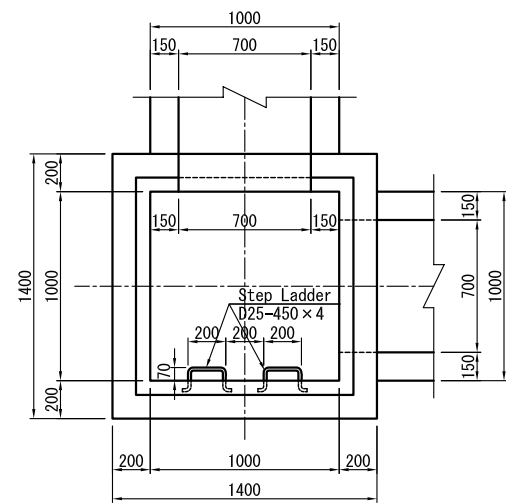


SECTION

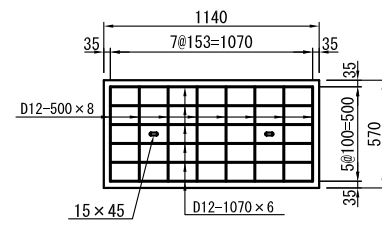
U-DITCH COVER S=1:15



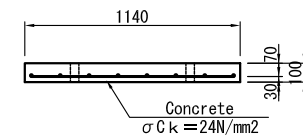
PIPE CULVERTS S=1:30



PLAN

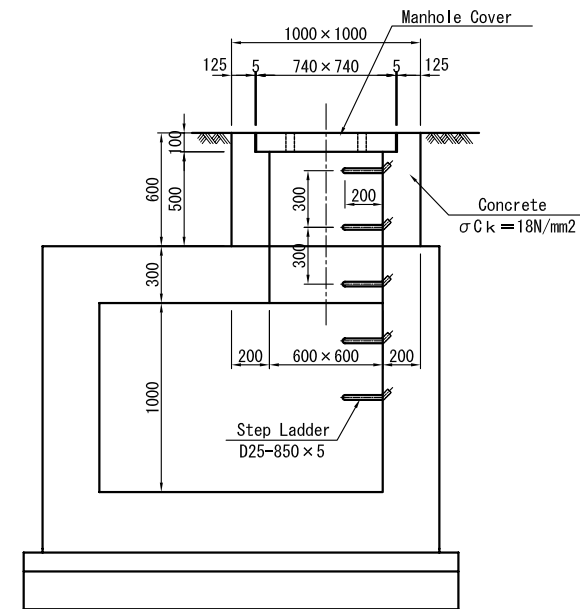


PLAN

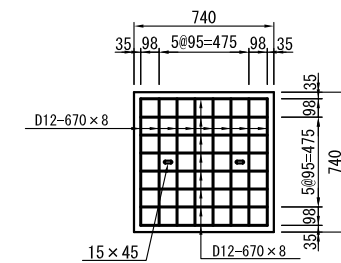


SECTION

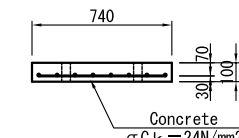
CATCH BASIN COVER S=1:20



MANHOLE S=1:20

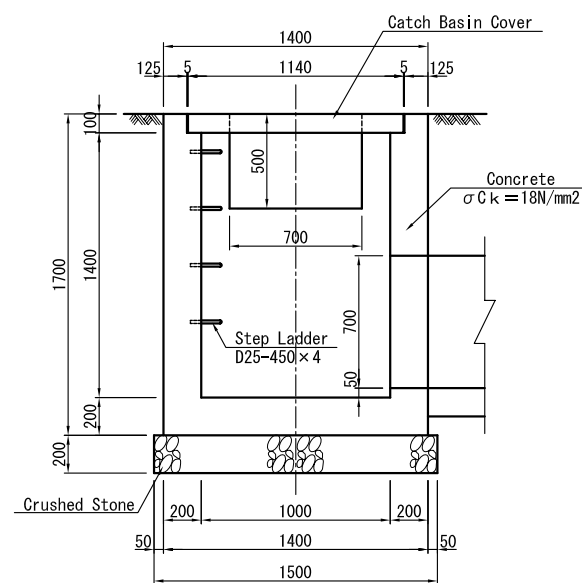


PLAN



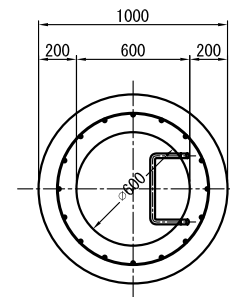
SECTION

MANHOLE COVER S=1:20

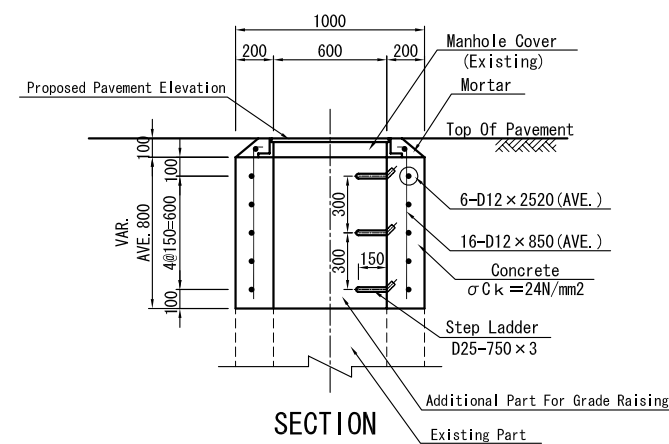


SECTION

CATCH BASIN S=1:20

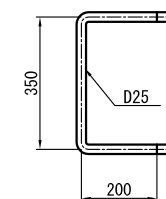
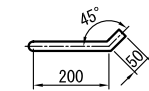


PLAN

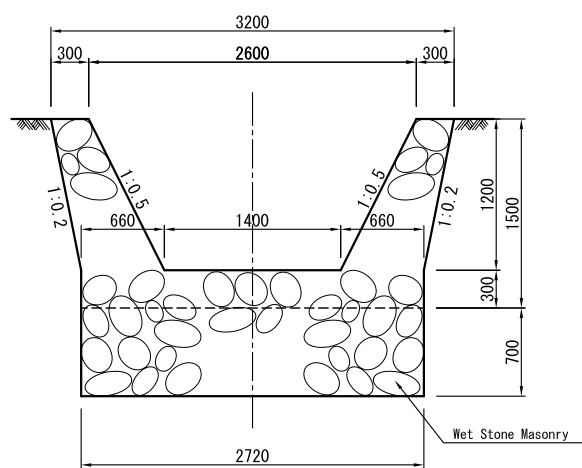
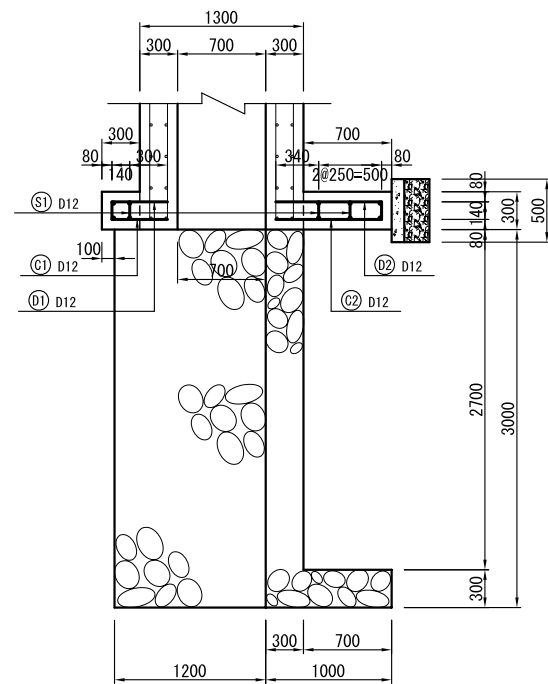
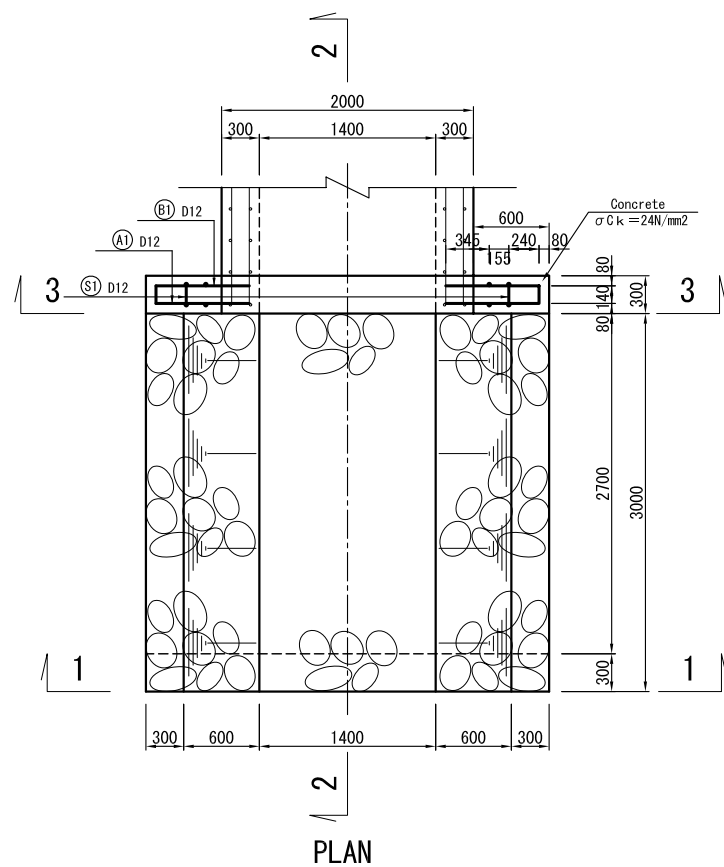


SECTION

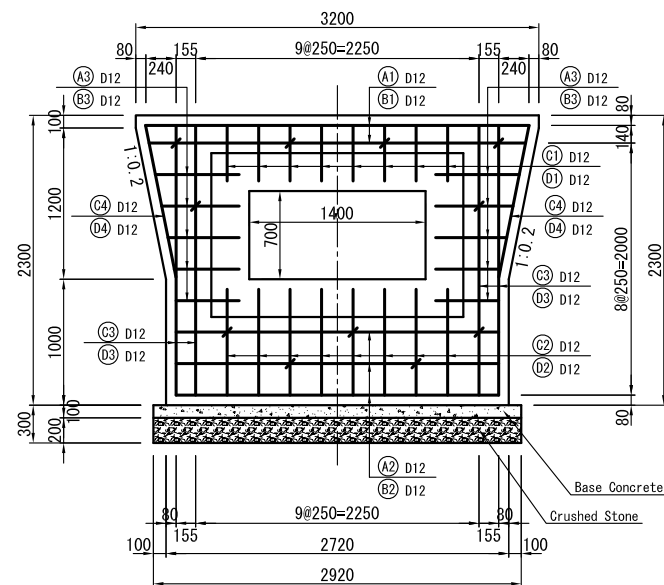
MANHOLE RAISE S=1:20



DETAIL OF STEP LADDER S=1:10



INLET/OUTLET STRUCTURE S=1:30

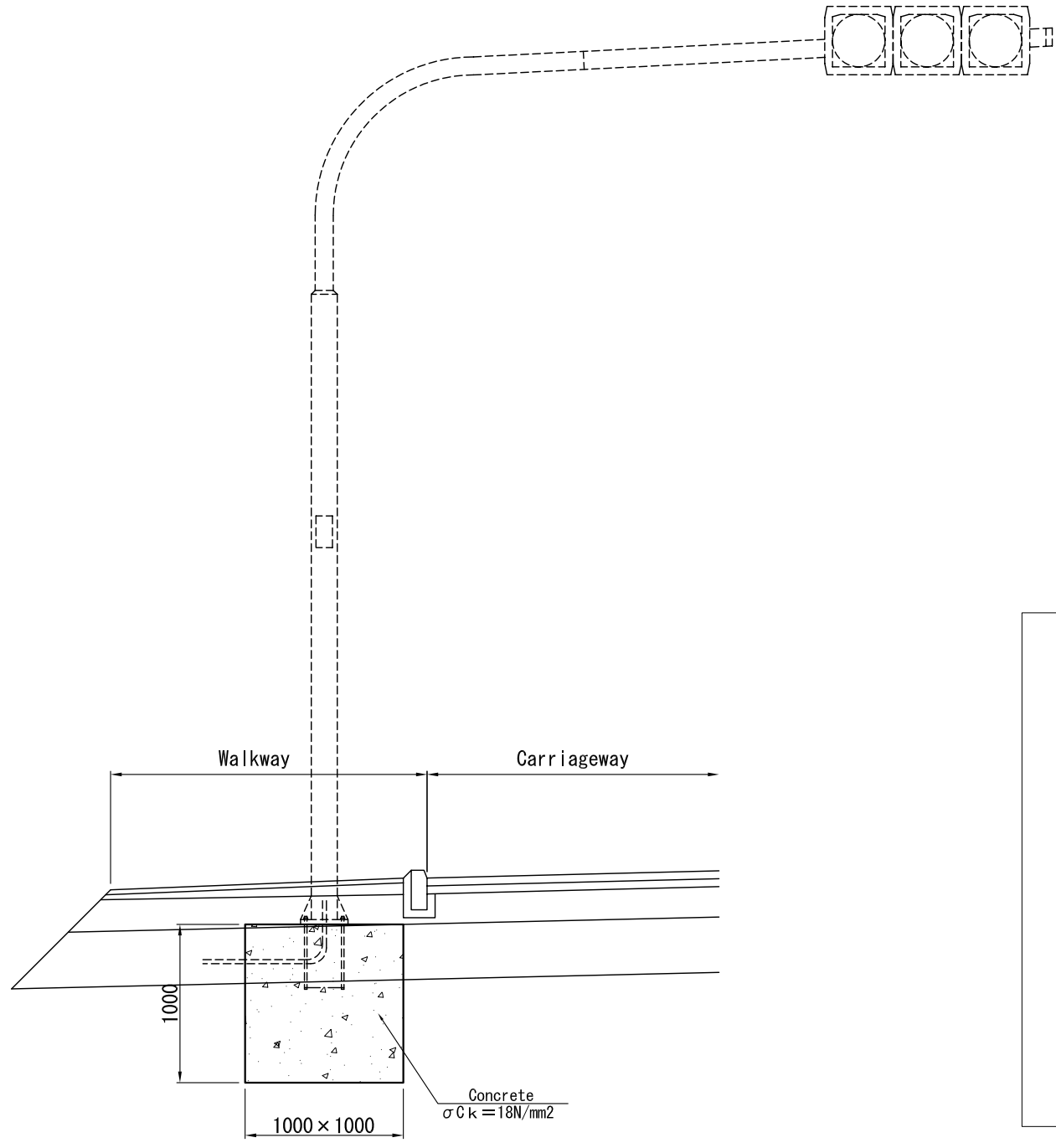


Reinforcing Bars Processing Table

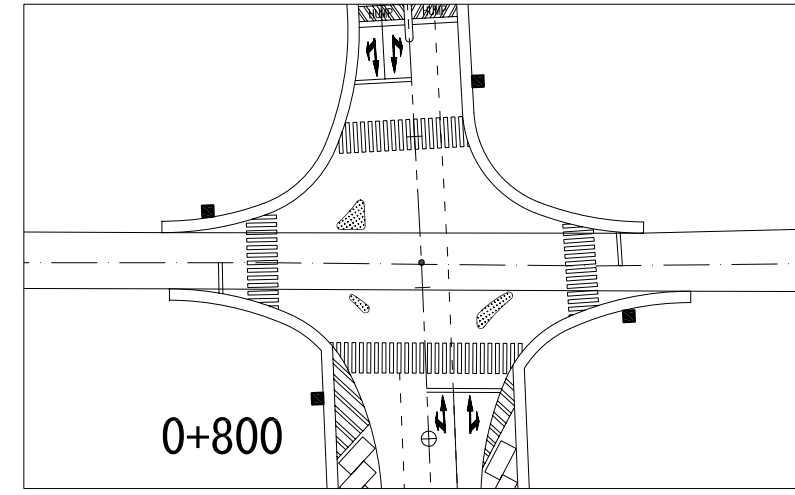
Mark	Form	Size	No.	Length	L 1 (mm)	L 2 (mm)	L 3 (mm)	L 4 (mm)	H (mm)	R (mm)
A 1	1	D12	2	3020	3020					
A 2	1	D12	3	2560	2560					
A 3	1	D12	10	580	580					
B 1	3	D12	2	3300	3020	140				
B 2	3	D12	3	2840	2560	140				
B 3	2	D12	10	720	580	140				
C 1	1	D12	8	440	440					
C 2	1	D12	8	840	840					
C 3	1	D12	4	2140	2140					
C 4	1	D12	2	1230	1230					
D 1	2	D12	8	580	440	140				
D 2	2	D12	8	980	840	140				
D 3	3	D12	4	2420	2140	140				
D 4	3	D12	2	1510	1230	140				
S 1	3	D12	11	370	164	100				

Reinforcement Bar List

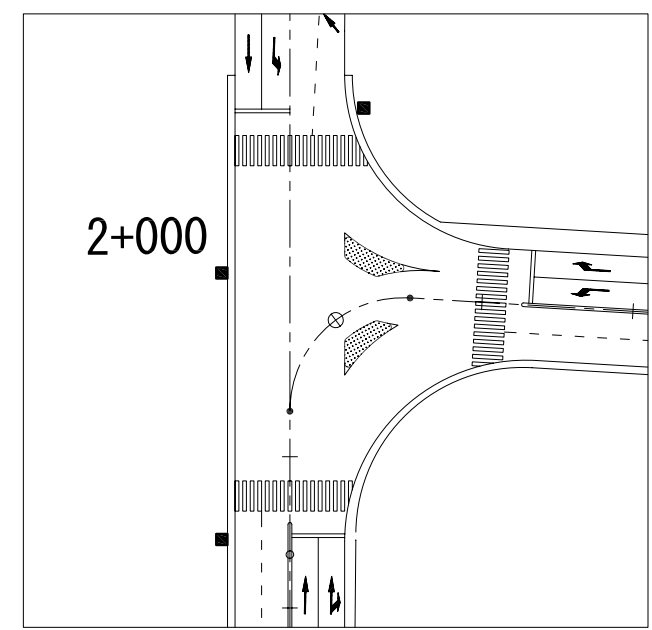
Mark	Size	Length	No.	Weight/m (kg)	Unit Weight (kg)	Weight (kg)	Remarks
A 1	D12	3020	2	0.888	2.682	5.364	
A 2	D12	2560	3	0.888	2.273	6.819	
A 3	D12	580	10	0.888	0.515	5.150	
B 1	D12	3300	2	0.888	2.930	5.860	
B 2	D12	2840	3	0.888	2.522	7.566	
B 3	D12	720	10	0.888	0.639	6.390	
C 1	D12	440	8	0.888	0.391	3.128	
C 2	D12	840	8	0.888	0.746	5.968	
C 3	D12	2140	4	0.888	1.900	7.600	
C 4	D12	1230	2	0.888	1.092	2.184	
D 1	D12	580	8	0.888	0.515	4.120	
D 2	D12	980	8	0.888	0.870	6.960	
D 3	D12	2420	4	0.888	2.149	8.596	
D 4	D12	1510	2	0.888	1.341	2.682	
S 1	D12	370	11	0.888	0.329	3.619	
				TOTAL	D12	82.006	



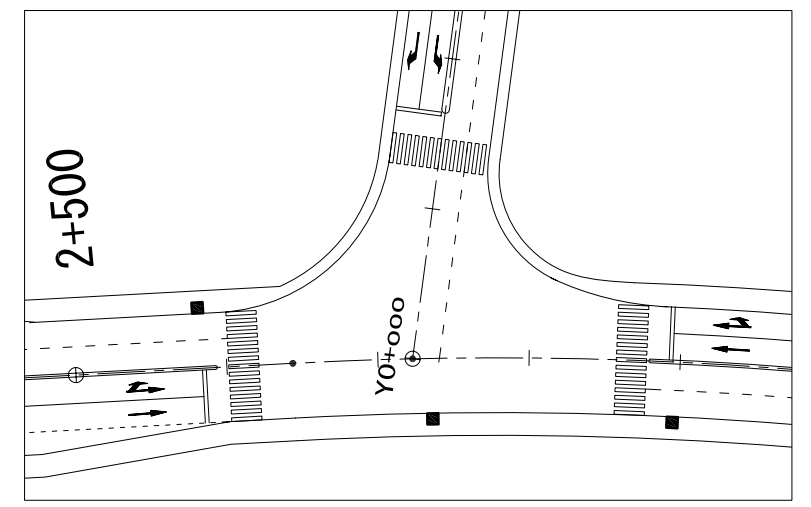
TRAFFIC POSTE FOUNDATION S=1:20



Y0+824 (NR3 CROSSING)



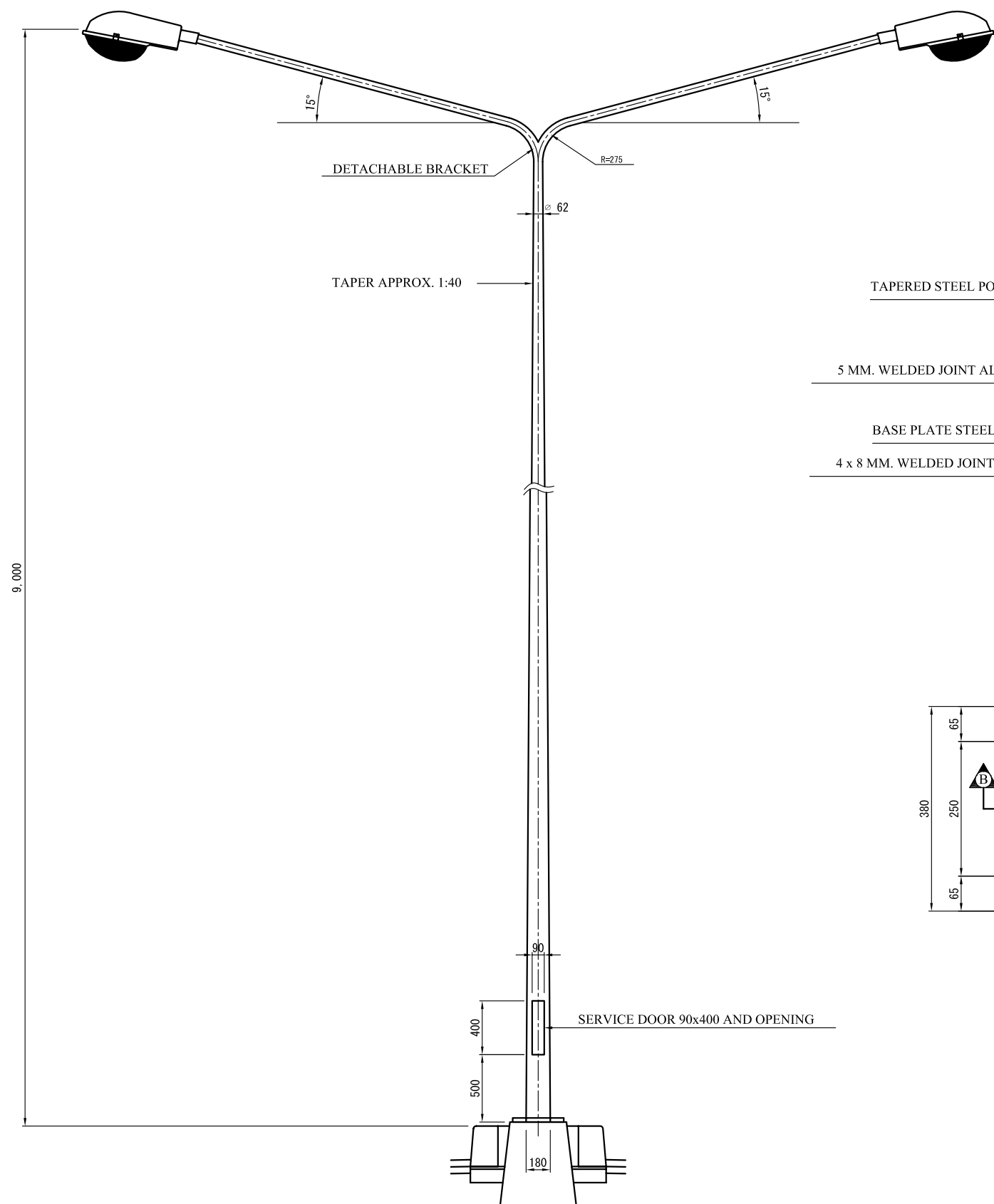
2+000 (INTERSECTION 3)



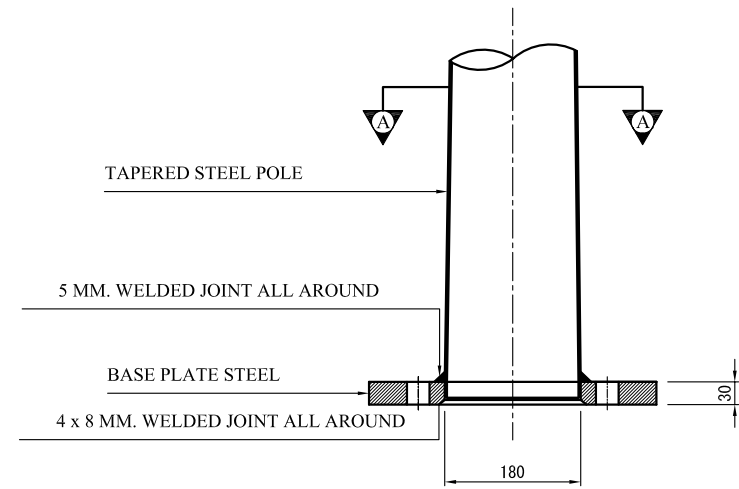
2+550 (INTERSECTION Y1)

LAYOUT DRAWING S=1:500

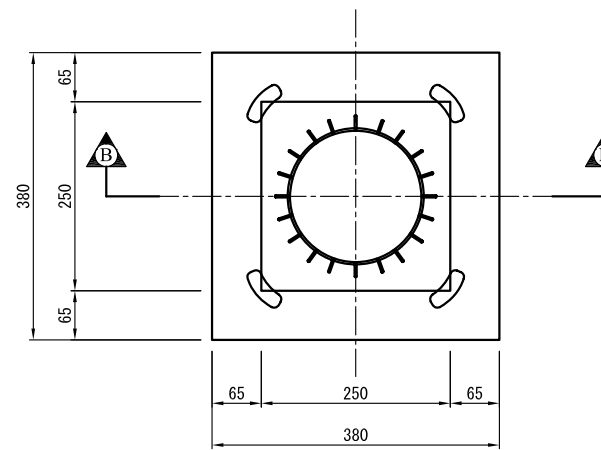
<p>L'OFFICE DES ROUTES THE REPUBLIC OF BURUNDI</p>	<p>THE BASIC DESIGN STUDY ON THE GRANT AID FOR REHABILITATION OF ROADS AND INFRASTRUCTURE FOR BUJUMBURA CITY IN THE REPUBLIC OF BURUNDI</p>	<p>JAPAN INTERNATIONAL COOPERATION AGENCY CTI ENGINEERING INTERNATIONAL CO., LTD.</p>	<p>TITLE : DETAILS OF TRAFFIC POSTE FOUNDATION</p>	<p>SCALE AS SHOWN</p>	<p>Drawing No. M-14</p>	<p>/</p>
--	---	---	--	---------------------------	-----------------------------	----------



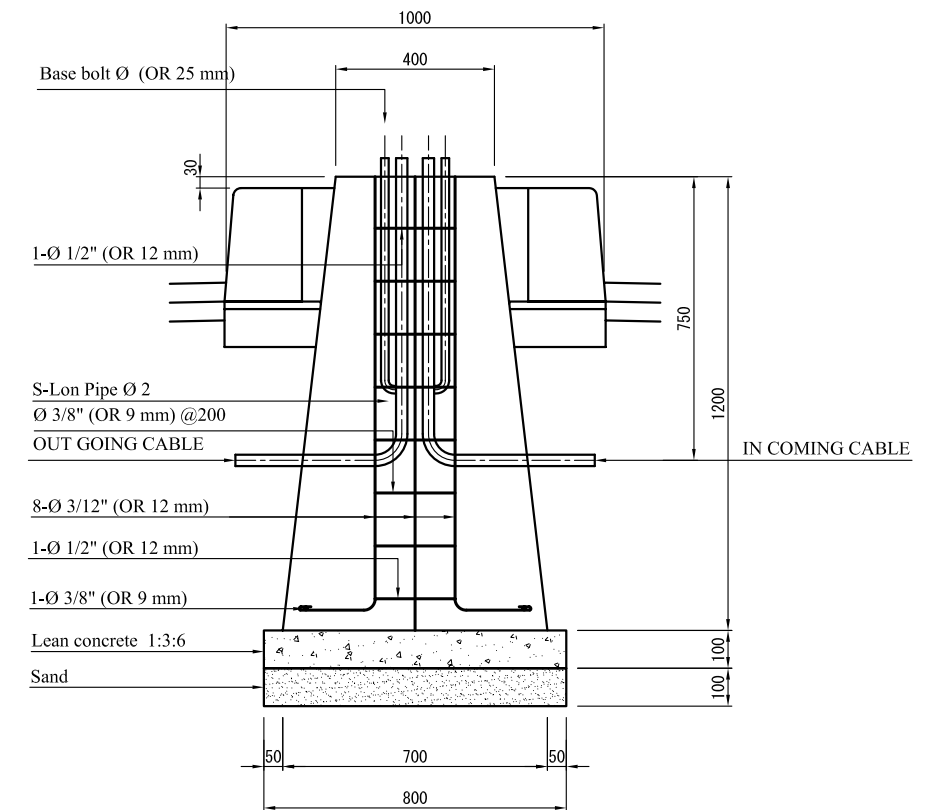
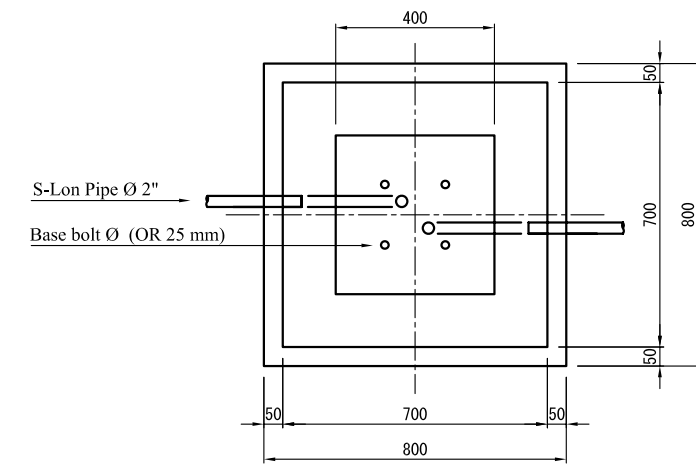
GENERAL VIEW OF LIGHTNING POLE S=1:20
TYPE-1 (DOUBLE LAMP)



SECTION B-B S=1:5

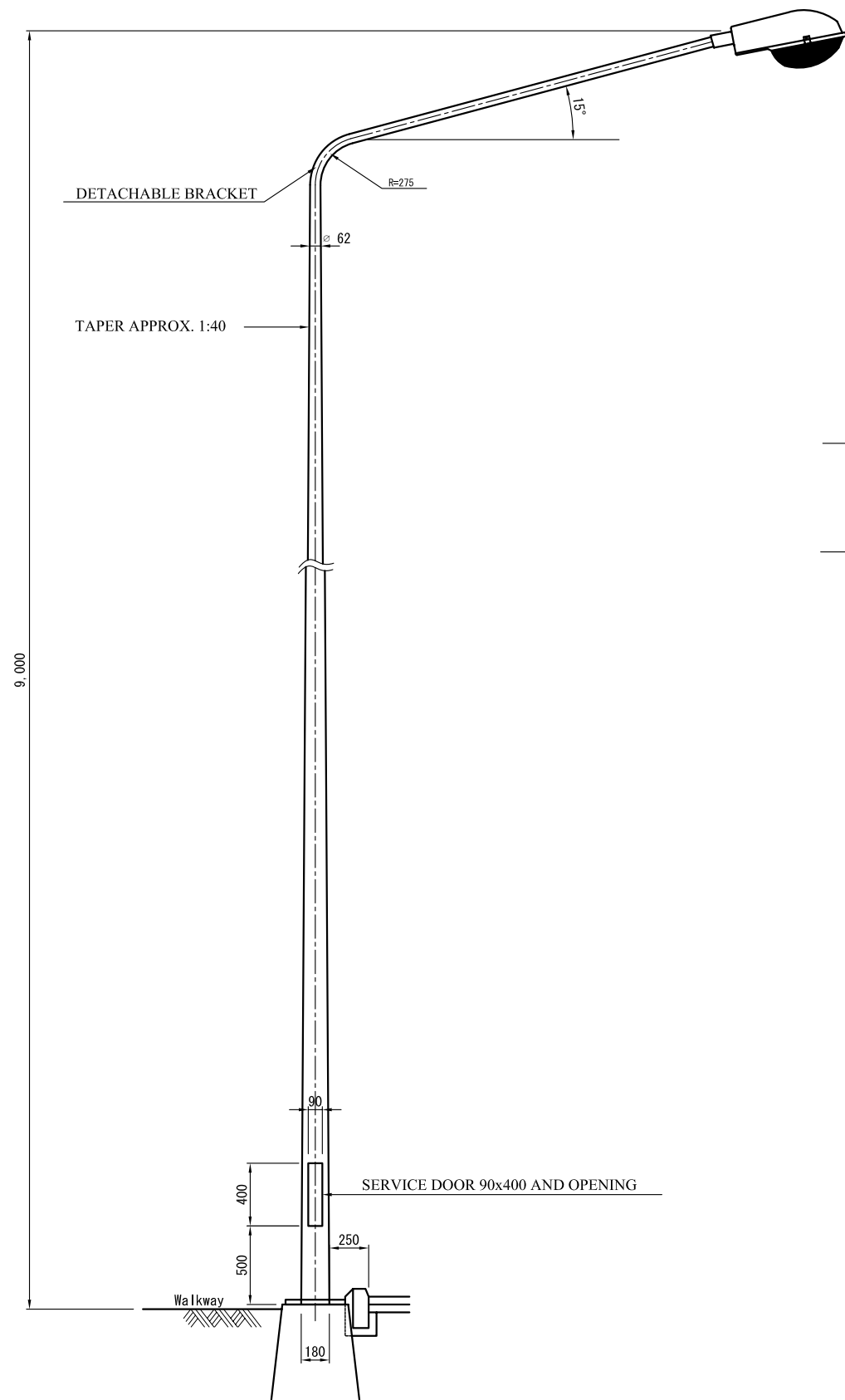


SECTION A-A S=1:5

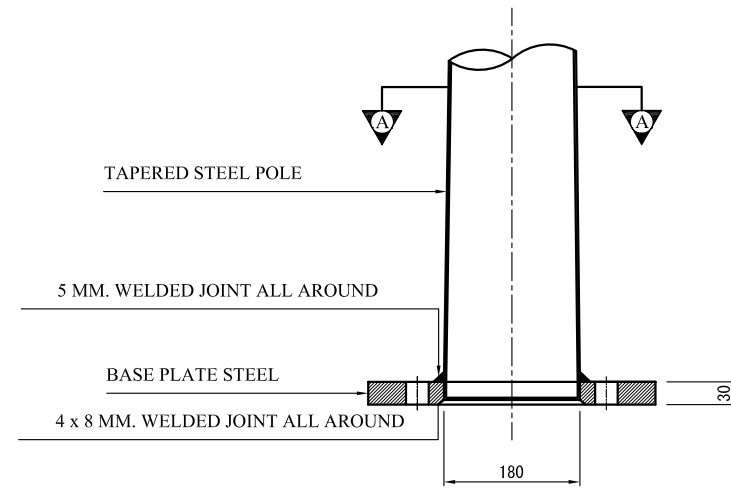


LIGHTING POLE FOUNDATION DETAILS S=1:10

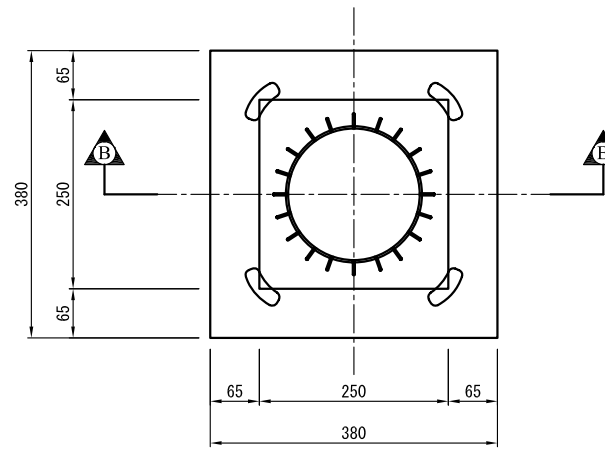
L'OFFICE DES ROUTES THE REPUBLIC OF BURUNDI	THE BASIC DESIGN STUDY ON THE GRANT AID FOR REHABILITATION OF ROADS AND INFRASTRUCTURE FOR BUJUMBURA CITY IN THE REPUBLIC OF BURUNDI	JAPAN INTERNATIONAL COOPERATION AGENCY CTI ENGINEERING INTERNATIONAL CO., LTD.	TITLE : ROAD LIGHTING FACILITIES TYPE-1 (DOUBLE LAMP)	SCALE AS SHOWN	Drawing No. M-15
--	---	---	---	-------------------	---------------------



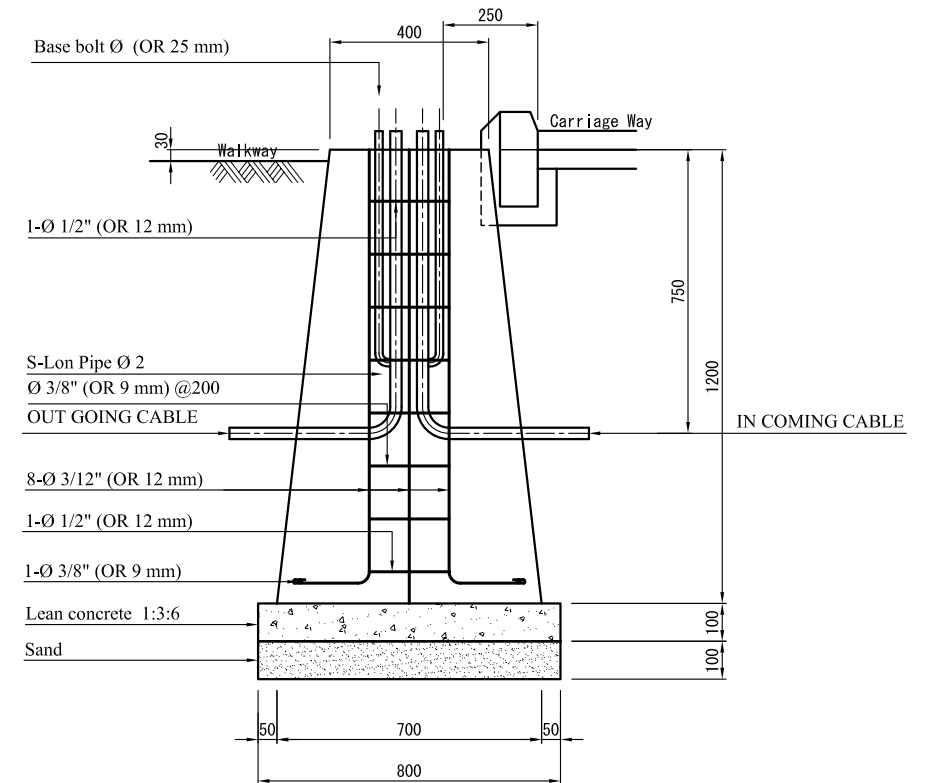
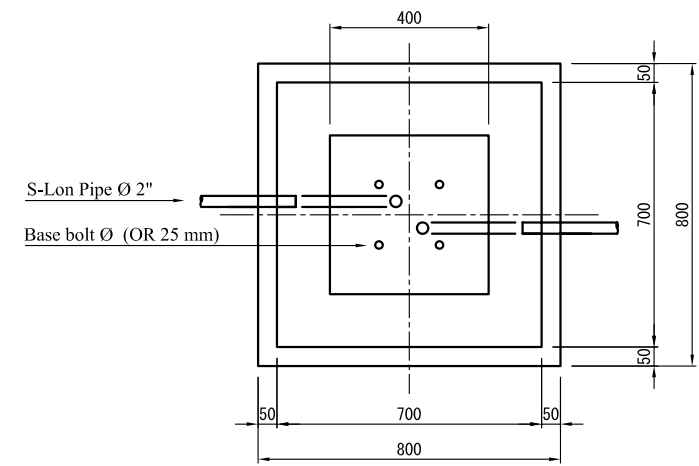
GENERAL VIEW OF LIGHTING POLE S=1:20
TYPE-2 (SINGLE LAMP)



SECTION B-B S=1:5

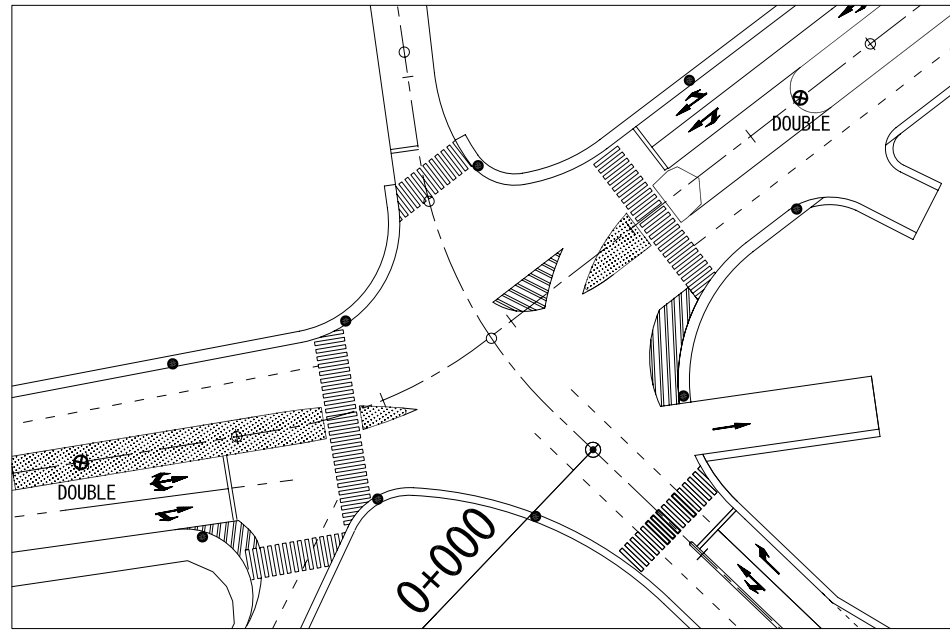


SECTION A-A S=1:5

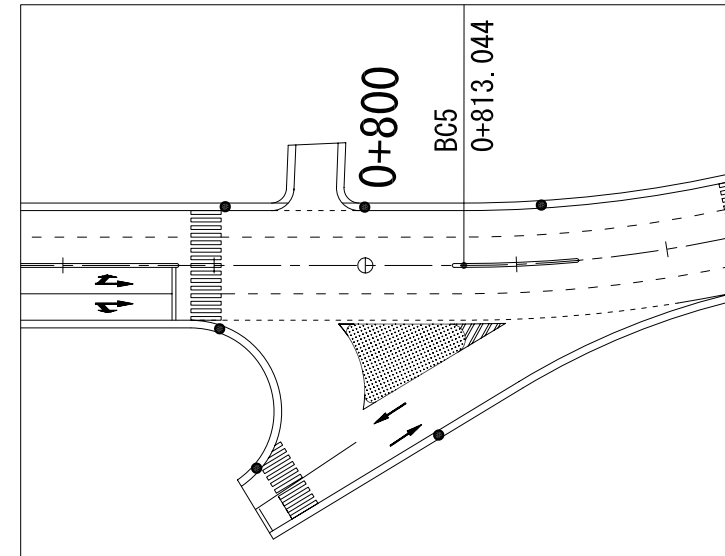


LIGHTING POLE FOUNDATION DETAILS S=1:10

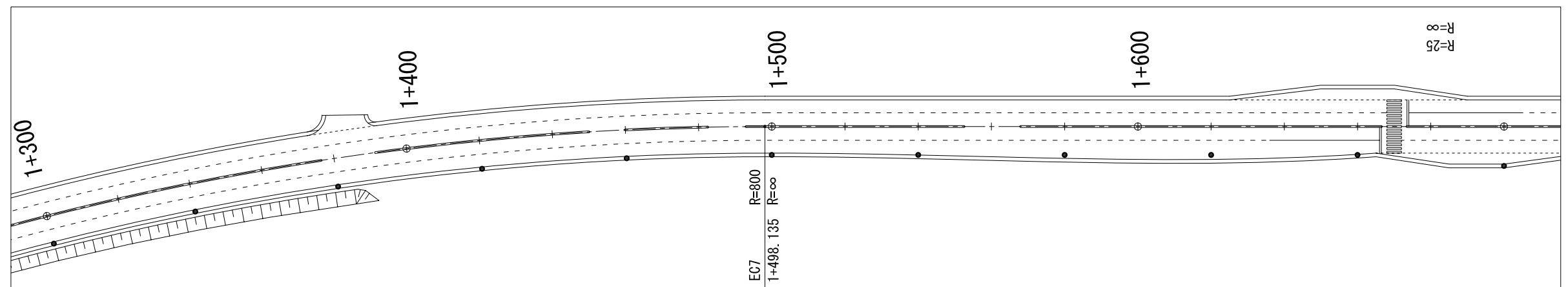
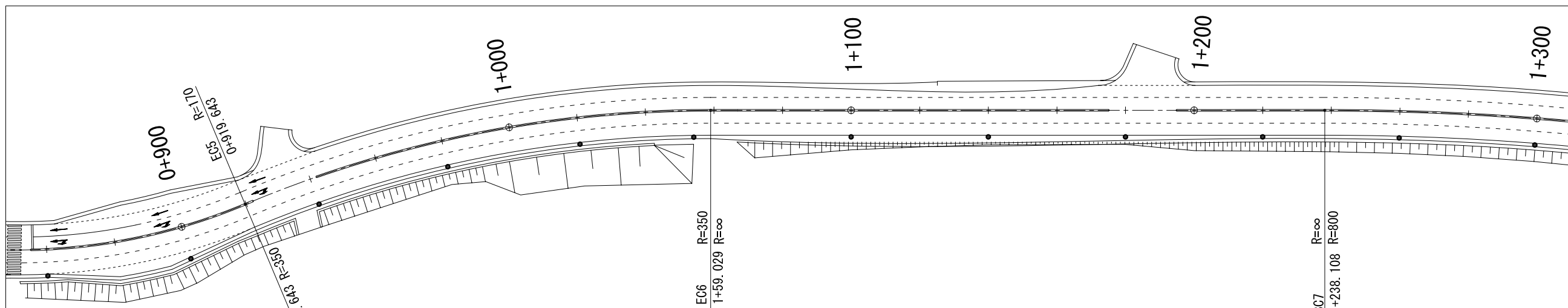
L'OFFICE DES ROUTES THE REPUBLIC OF BURUNDI	THE BASIC DESIGN STUDY ON THE GRANT AID FOR REHABILITATION OF ROADS AND INFRASTRUCTURE FOR BUJUMBURA CITY IN THE REPUBLIC OF BURUNDI	JAPAN INTERNATIONAL COOPERATION AGENCY CTI ENGINEERING INTERNATIONAL CO., LTD.	TITLE : ROAD LIGHTING FACILITIES TYPE-2 (SINGLE LAMP)	SCALE AS SHOWN	Drawing No. M-16
--	---	---	---	-------------------	---------------------



0+000 (INTERSECTION 1) S=1:500



0+800 (INTERSECTION 2) S=1:500



0+840 - 1+700 (RIGHT SIDE) S=1:750

L'OFFICE DES ROUTES
THE REPUBLIC OF BURUNDI

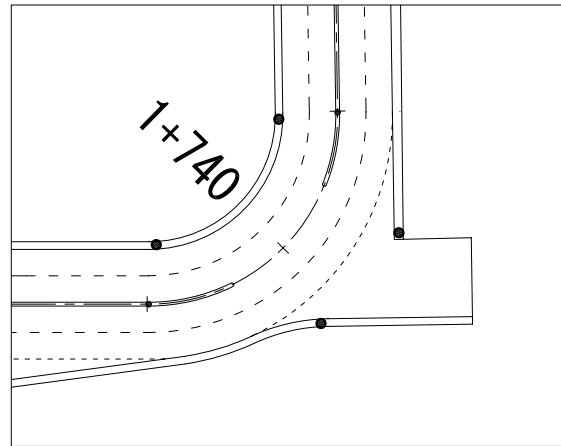
THE BASIC DESIGN STUDY
ON THE GRANT AID FOR REHABILITATION OF
ROADS AND INFRASTRUCTURE FOR BUJUMBURA CITY
IN THE REPUBLIC OF BURUNDI

JAPAN INTERNATIONAL COOPERATION AGENCY
CTI ENGINEERING INTERNATIONAL CO., LTD.

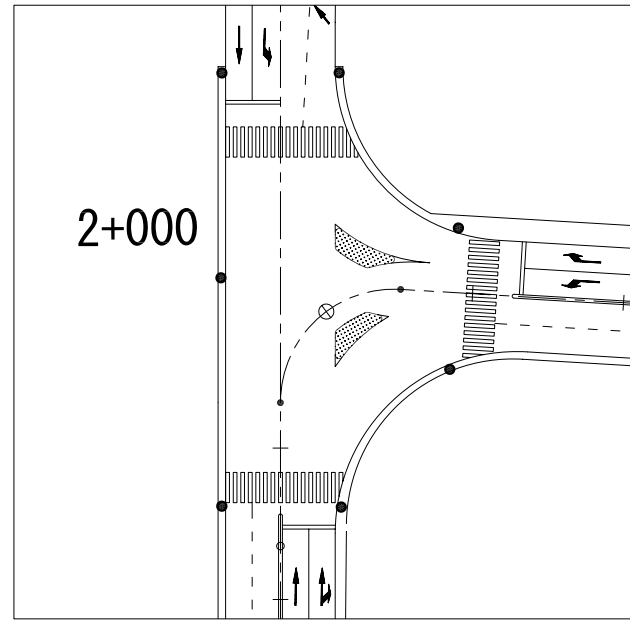
TITLE :
ROAD LIGHTING FACILITIES
(LAYOUT DRAWING -1/2)

SCALE
AS SHOWN

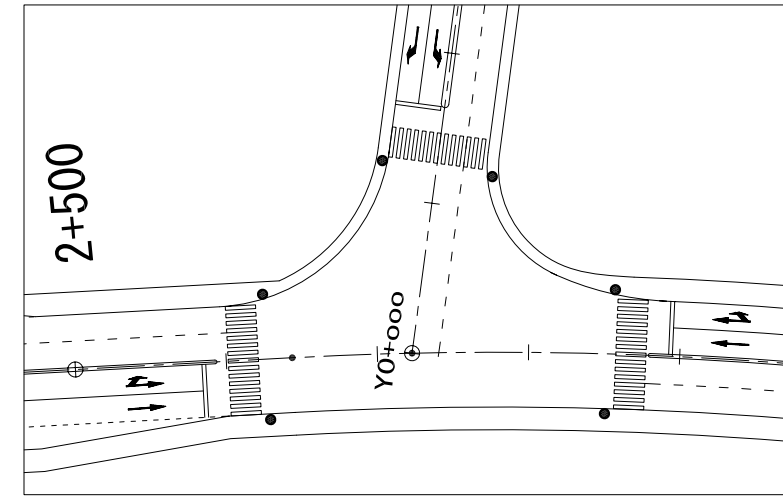
Drawing No.
M-17



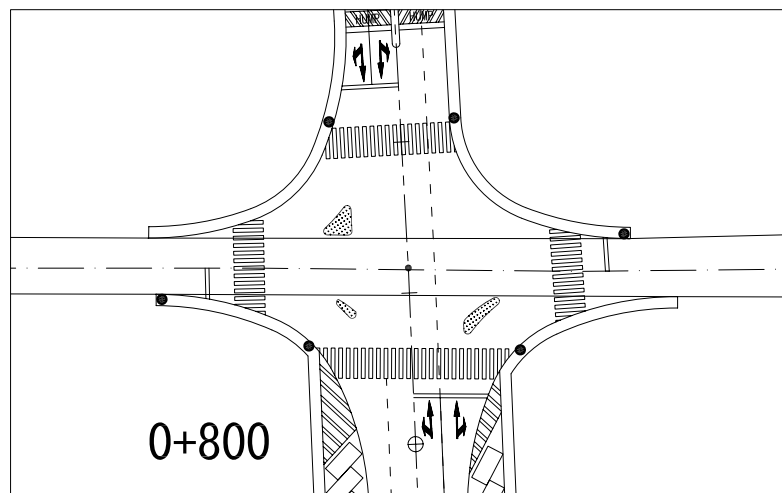
1+740 S=1:500



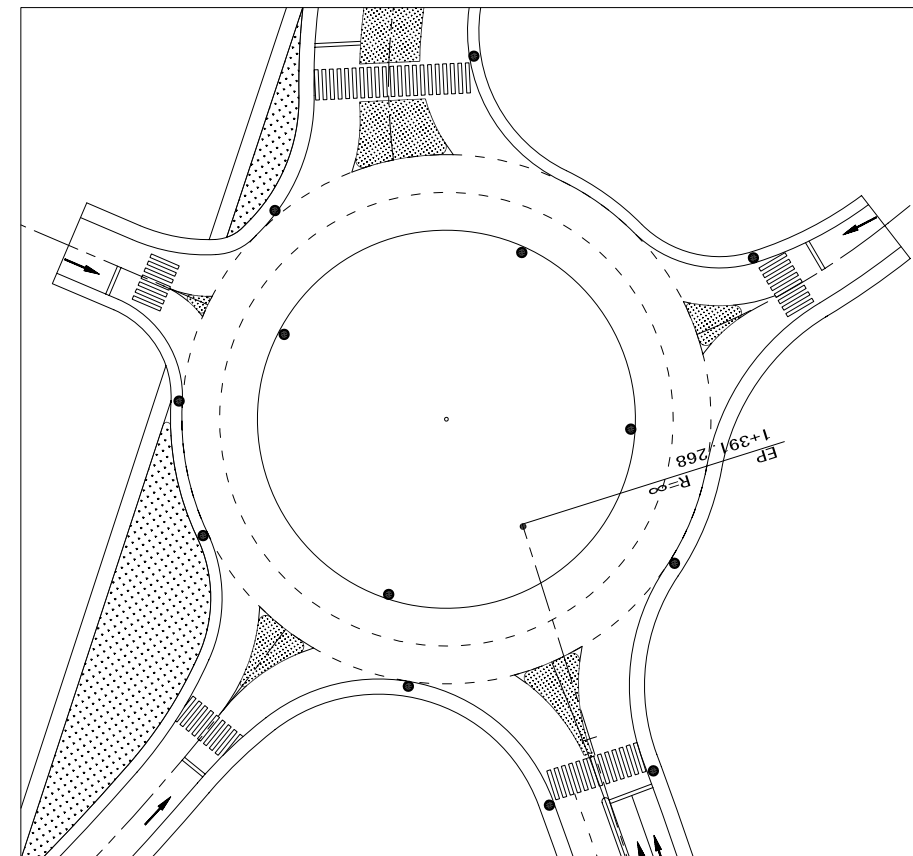
2+000 (INTERSECTION 3)



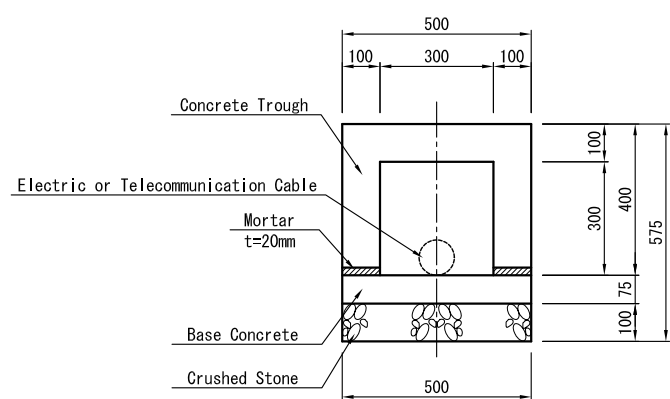
Y0+000 (INTERSECTION Y1)



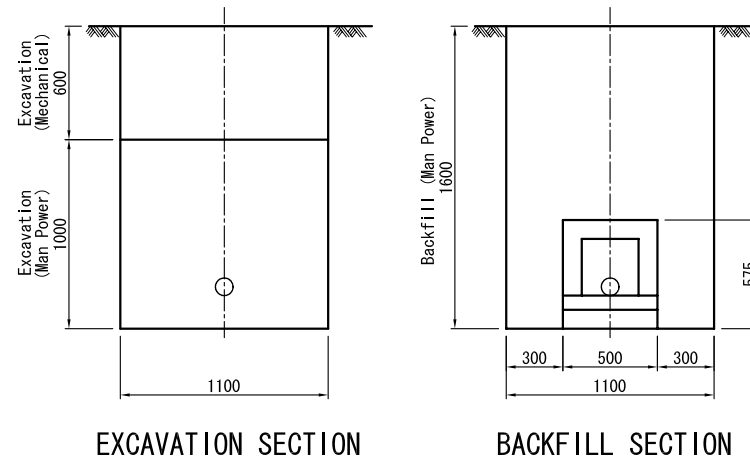
Y0+820 (INTERSECTION Y2)



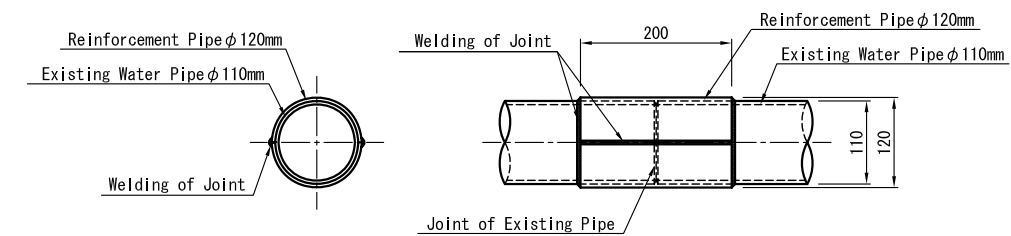
Y1+390 (INTERSECTION Y3)



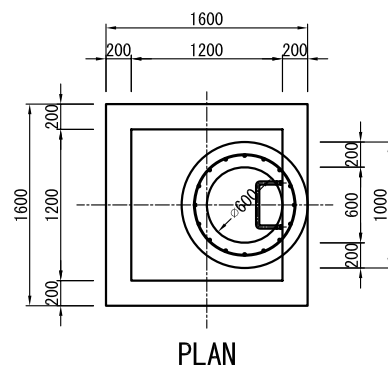
Details of Protection of Underground Utilities S=1:10



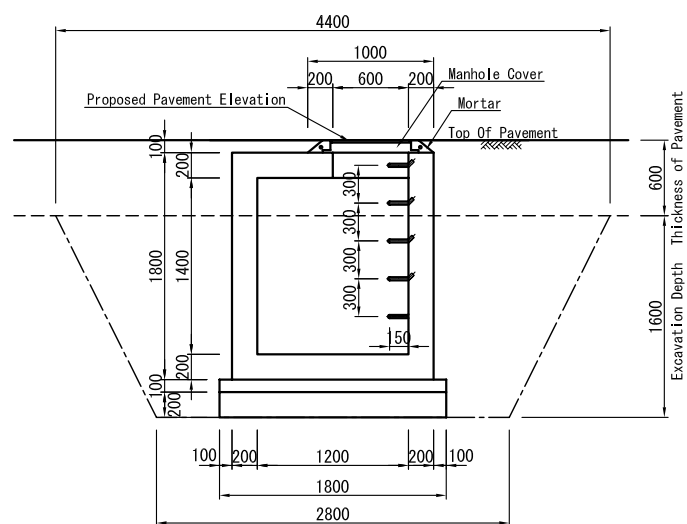
Details of Earth works for Concrete Trough S=1:20



Details of Reinforcement of Existing Water Pipe Joints S=1:5

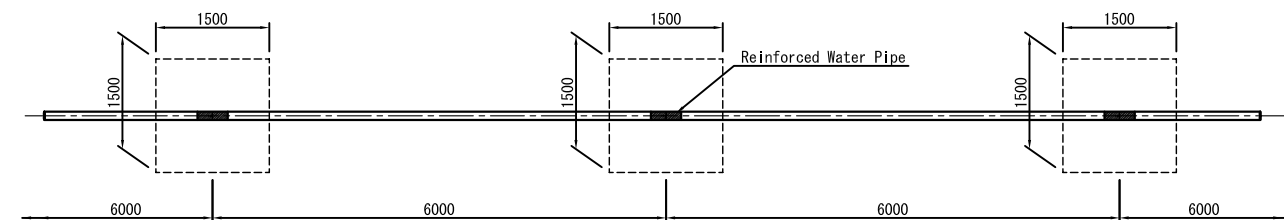


PLAN

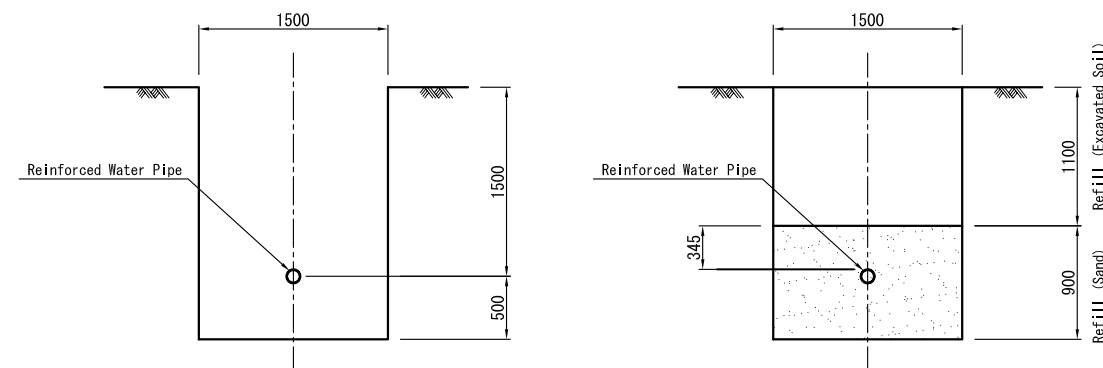


SECTION

Details of Manholes (Electric/Telecommunication Cables) S=1:30



Details of Earth Works for Reinforcement of Water Pipe S=1:50



EXCAVATION SECTION

BACKFILL SECTION

Details of Earth works for Water Pipe S=1:30

NOTES:

1. All dimensions are in millimeters unless otherwise indicated.
2. Manholes for Maintenance purpose are to be provided at an interval of 50 meters.
3. The interval for excavation is decided by assuming the joints of the existing water pipes and needs verification at the site.
4. The excavated ditch shall be refilled as shown in the drawings and compacted adequately.

L'OFFICE DES ROUTES THE REPUBLIC OF BURUNDI	THE BASIC DESIGN STUDY ON THE GRANT AID FOR REHABILITATION OF ROADS AND INFRASTRUCTURE FOR BUJUMBURA CITY IN THE REPUBLIC OF BURUNDI	JAPAN INTERNATIONAL COOPERATION AGENCY CTI ENGINEERING INTERNATIONAL CO., LTD.	TITLE : Details of Protection and Reinforcement Methods of Underground Utilities	SCALE	Drawing No.
				AS SHOWN	M-19