

REMARKS:

THE PREPARATORY SURVEY ON ROAD IMPROVEMENT PLAN IN NACALA DEVELOPMENT CORRIDOR (N13: CUAMBA-MANDIMBA-LICHINGA)

Eight-Japan Engineering Consultants Inc.
Oriental Consultants Co., Ltd

DRAWING TITLE

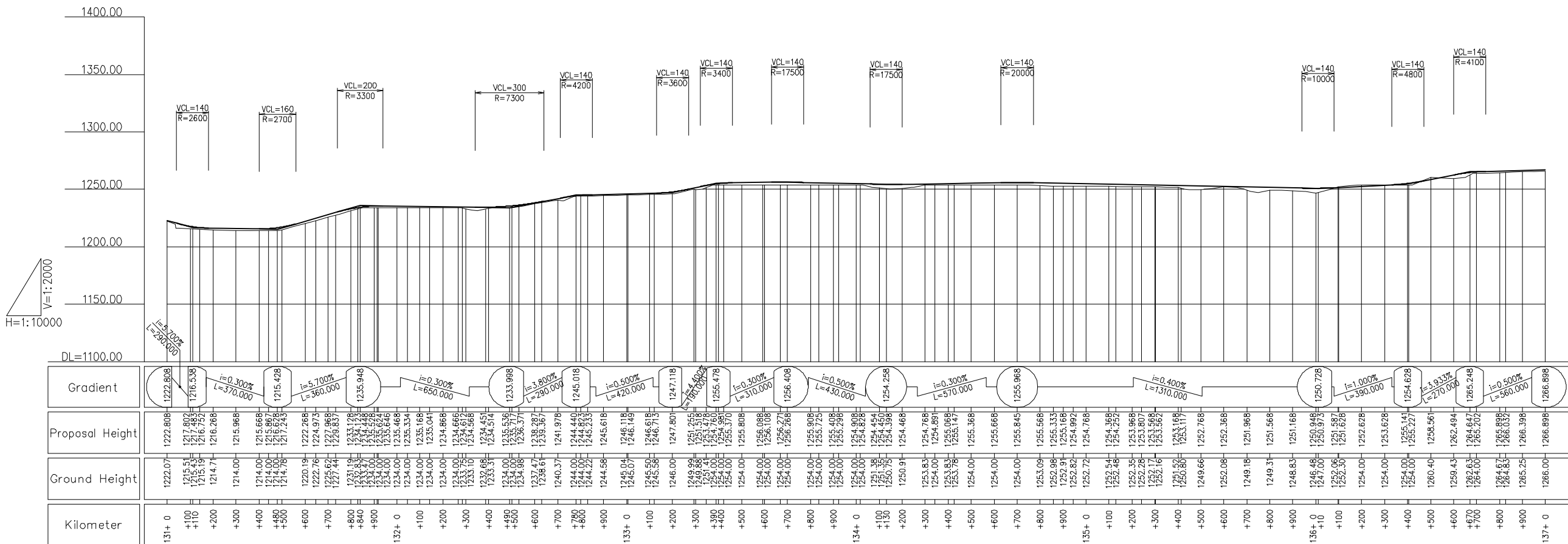
Plan and Profile (22)

	PREPARED BY	CHECKED BY	APPROVED BY
NAME			
SIGNATURE			
DATE			

SCALE	SHEET NO.	DRAWING NO.	REV. NO.
1/10,000		23	-

JICA JAPAN INTERNATIONAL COOPERATION AGENCY

NRAN NATIONAL ROAD ADMINISTRATION



JICA JAPAN INTERNATIONAL COOPERATION AGENCY

ANE NATIONAL ROAD ADMINISTRATION

REMARKS:

THE PREPARATORY SURVEY ON ROAD IMPROVEMENT PLAN IN NACALA DEVELOPMENT CORRIDOR (N13: CUAMBA-MANDIMBA-LICHINGA)

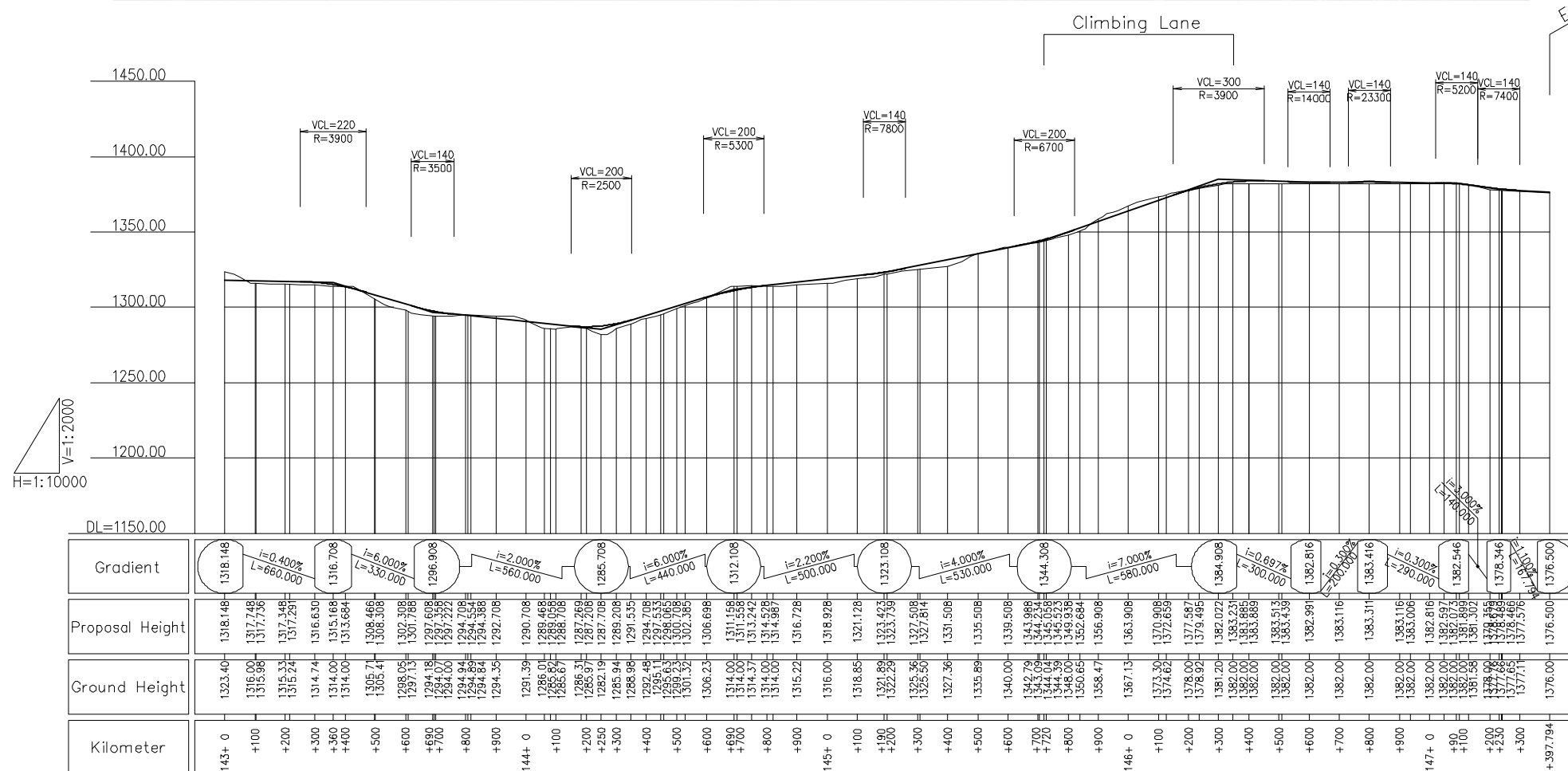
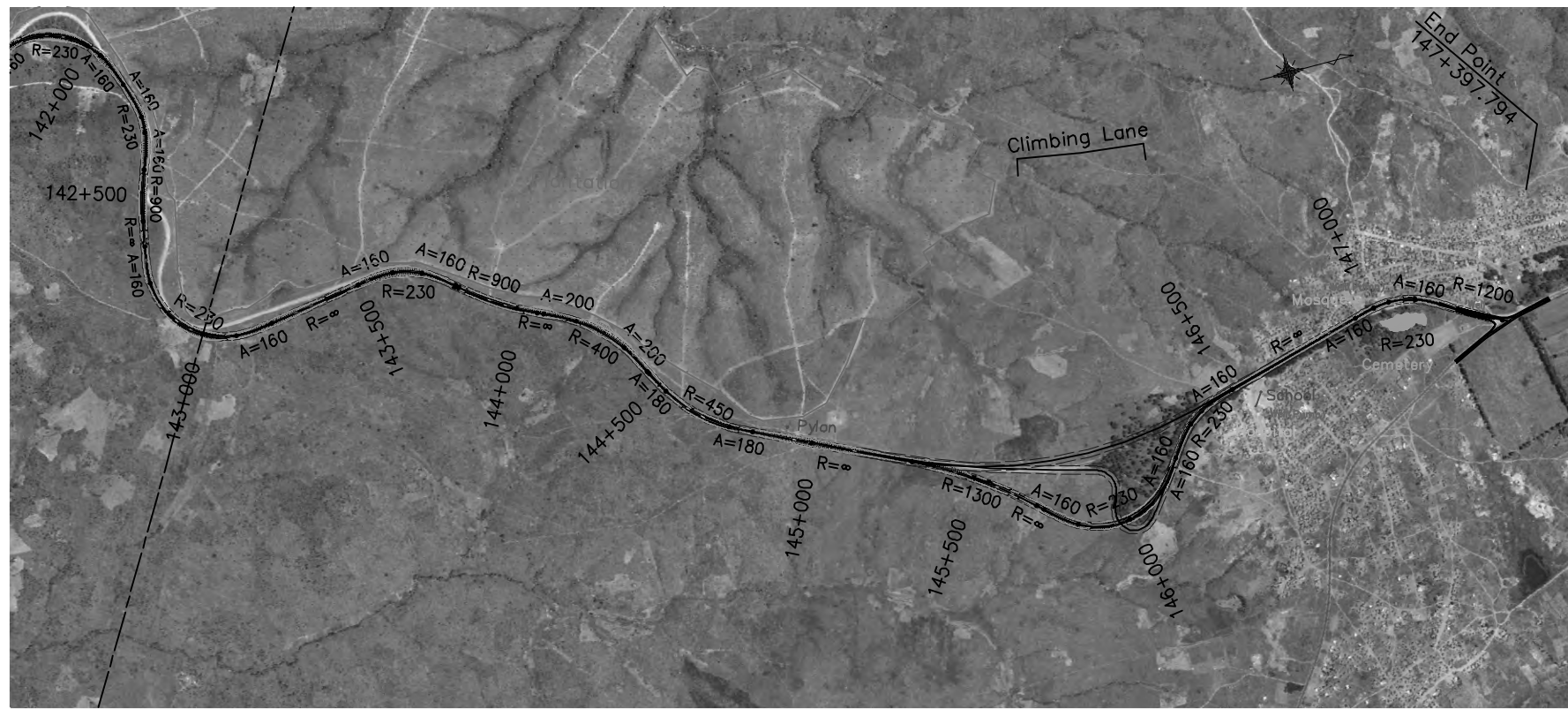
Eight-Japan Engineering Consultants Inc.
Oriental Consultants Co., Ltd

DRAWING TITLE

Plan and Profile (23)

	PREPARED BY	CHECKED BY	APPROVED BY
NAME			
SIGNATURE			
DATE			

SCALE	SHEET NO.	DRAWING NO.	REV. NO.
1/10,000		24	-



End Point
147+397.794

JICA JAPAN INTERNATIONAL COOPERATION AGENCY

ANR NATIONAL ROAD ADMINISTRATION

REMARKS:

THE PREPARATORY SURVEY ON ROAD IMPROVEMENT PLAN IN NACALA DEVELOPMENT CORRIDOR (N13: CUAMBA-MANDIMBA-LICHINGA)

Eight-Japan Engineering Consultants Inc.
Oriental Consultants Co., Ltd

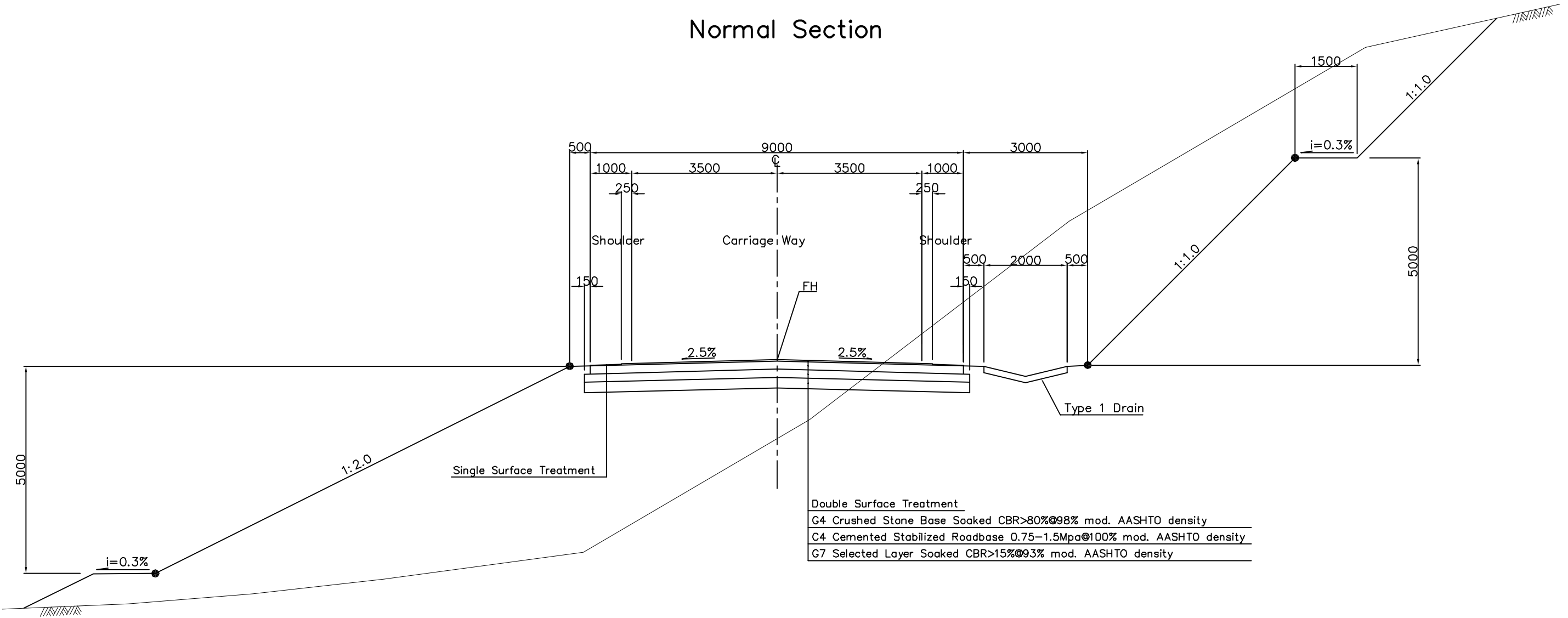
DRAWING TITLE
Plan and Profile (25)

PREPARED BY	CHECKED BY	APPROVED BY
NAME		
SIGNATURE		
DATE		

SCALE	SHEET NO.	DRAWING NO.	REV. NO.
1/10,000		26	-

Typical Cross Section (1)

Normal Section



Double Surface Treatment
 G4 Crushed Stone Base Soaked CBR>80%@98% mod. AASHTO density
 C4 Cemented Stabilized Roadbase 0.75-1.5Mpa@100% mod. AASHTO density
 G7 Selected Layer Soaked CBR>15%@93% mod. AASHTO density

Description	Unit	Sub-grade Class		
		S2	S3	S4
Double Surface Treatment	mm	-	-	-
G4 Crushed Stone Base Soaked CBR>80%@98% mod. AASHTO density	mm	200	200	150
C4 Cemented Stabilized Roadbase 0.75-1.5Mpa@100% mod. AASHTO density	mm	250	200	200
G7 Selected Layer Soaked CBR>15%@93% mod. AASHTO density	mm	250	250	200

JAPAN INTERNATIONAL COOPERATION AGENCY

NATIONAL ROAD ADMINISTRATION

REMARKS:

THE PREPARATORY SURVEY ON ROAD IMPROVEMENT PLAN IN NACALA DEVELOPMENT CORRIDOR (N13: CUAMBA-MANDIMBA-LICHINGA)

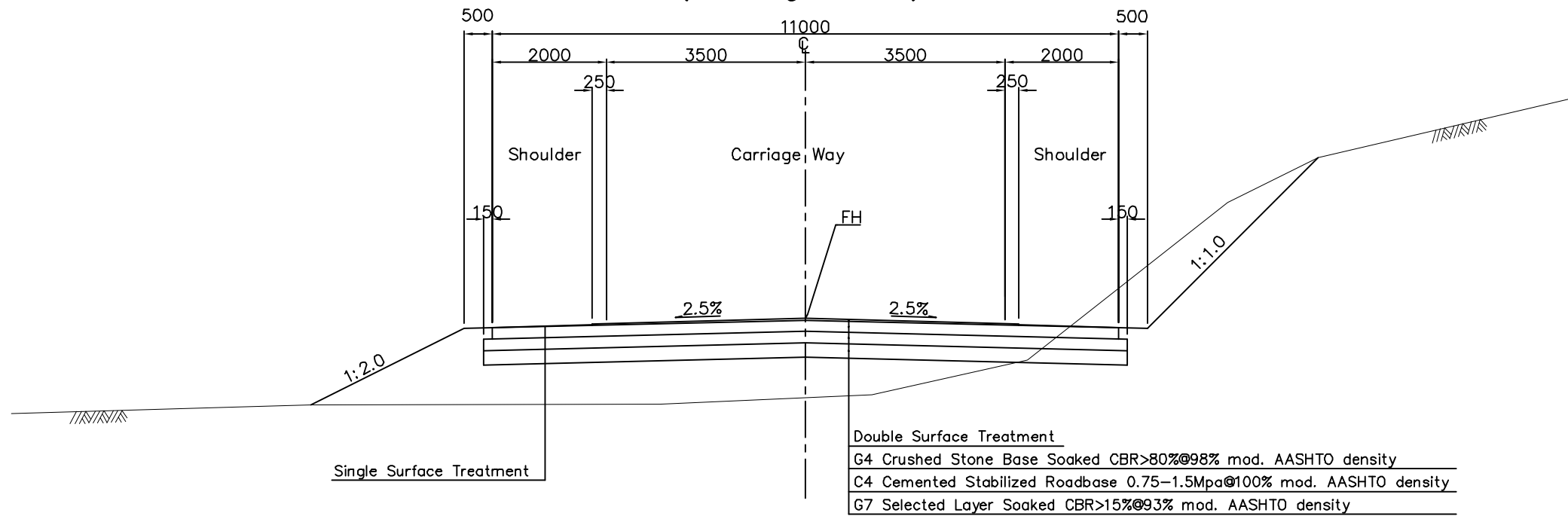
Eight-Japan Engineering Consultants Inc.
 Oriental Consultants Co., Ltd

DRAWING TITLE
Typical Cross Section (1)

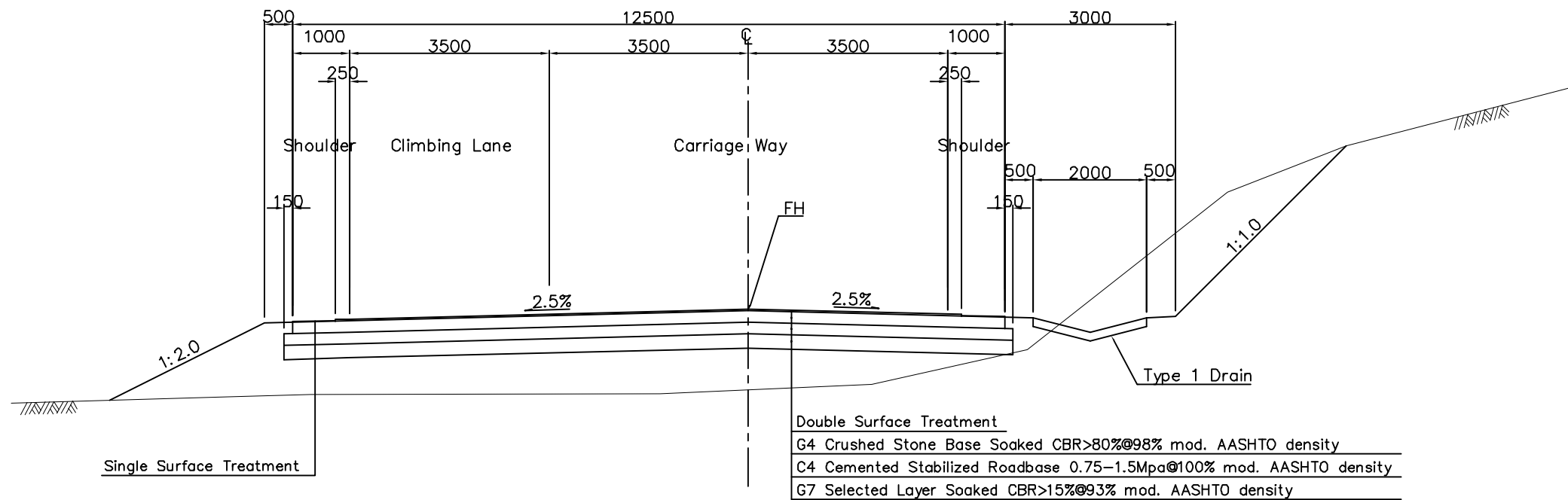
PREPARED BY	CHECKED BY	APPROVED BY	SCALE	SHEET NO.	DRAWING NO.	REV. NO.
NAME			1/50		27	-
SIGNATURE						
DATE						

Typical Cross Section (2)

Village Section (Massangulo, Lione)



Climbing Lane



JICA JAPAN INTERNATIONAL COOPERATION AGENCY

ANE NATIONAL ROAD ADMINISTRATION

REMARKS:

THE PREPARATORY SURVEY ON ROAD IMPROVEMENT PLAN IN NACALA DEVELOPMENT CORRIDOR
(N13: CUAMBA-MANDIMBA-LICHINGA)

Eight-Japan Engineering Consultants Inc.
Oriental Consultants Co., Ltd

DRAWING TITLE

Typical Cross Section (2)

	PREPARED BY	CHECKED BY	APPROVED BY
NAME			
SIGNATURE			
DATE			

SCALE	SHEET NO.	DRAWING NO.	REV. NO.
1/50		28	-