

 JAPAN INTERNATIONAL COOPERATION AGENCY
 NATIONAL ROAD ADMINISTRATION

REMARKS:

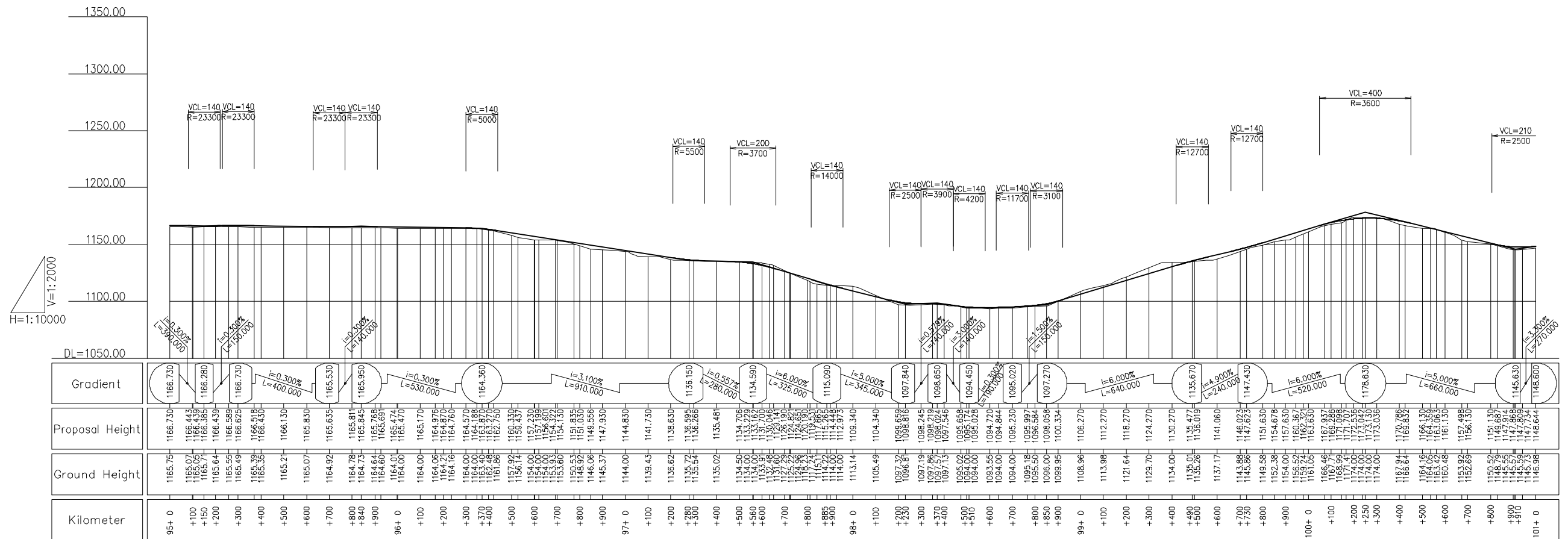
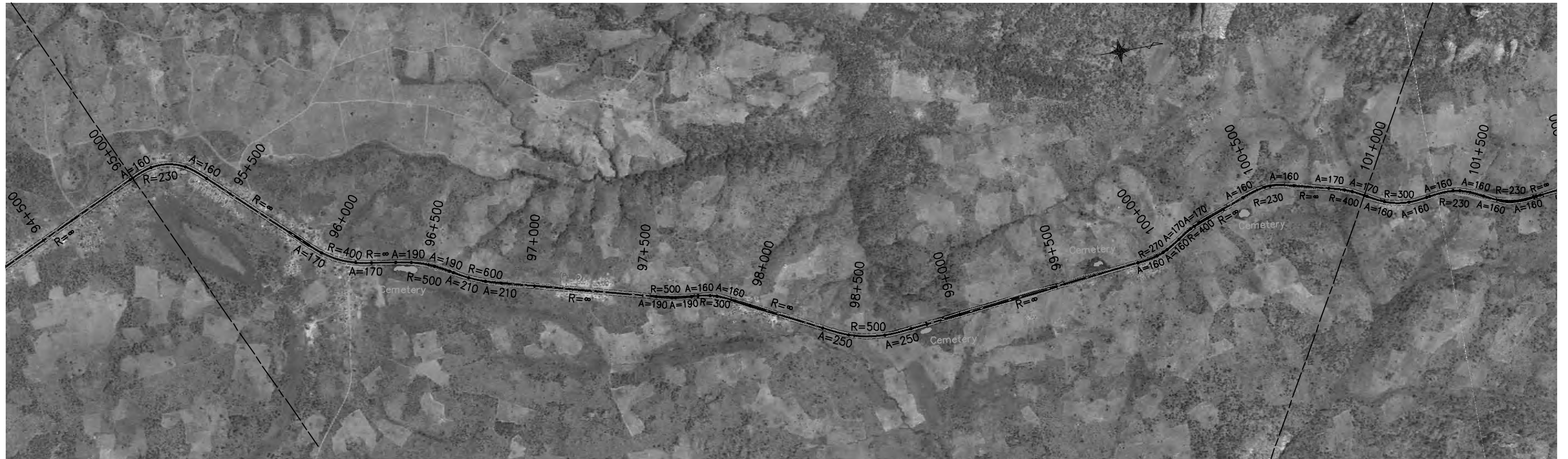
THE PREPARATORY SURVEY ON ROAD IMPROVEMENT PLAN IN NACALA DEVELOPMENT CORRIDOR
 (N13: CUAMBA-MANDIMBA-LICHINGA)
 Eight-Japan Engineering Consultants Inc.
 Oriental Consultants Co., Ltd

PREPARED BY	CHECKED BY	APPROVED BY
NAME		
SIGNATURE		
DATE		

DRAWING TITLE

Plan and Profile (16)

SCALE	SHEET NO.	DRAWING NO.	REV. NO.
1/10,000		17	-



JAPAN INTERNATIONAL COOPERATION AGENCY
 NATIONAL ROAD ADMINISTRATION

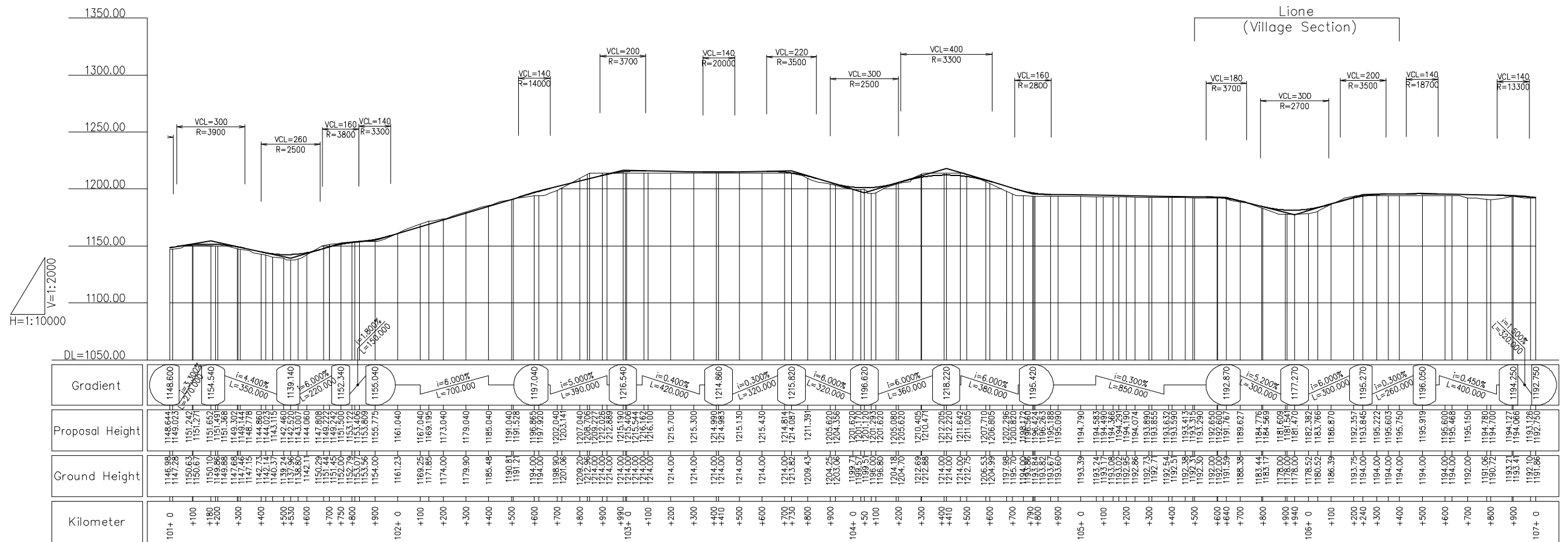
REMARKS:

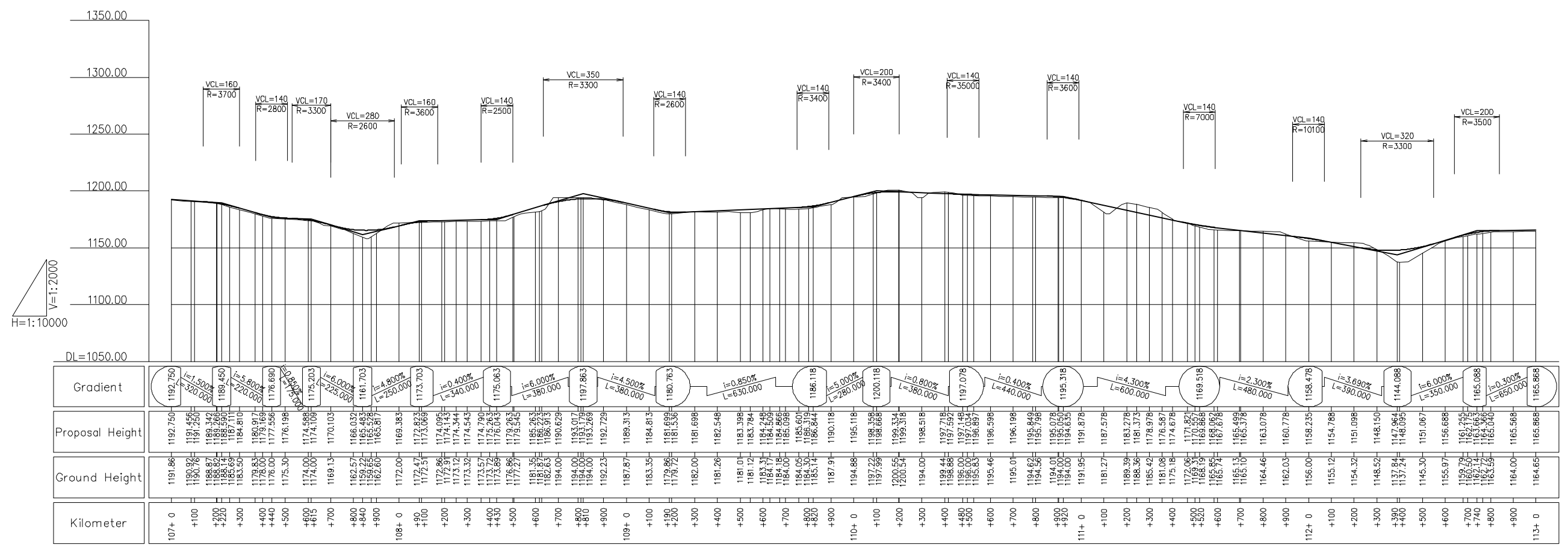
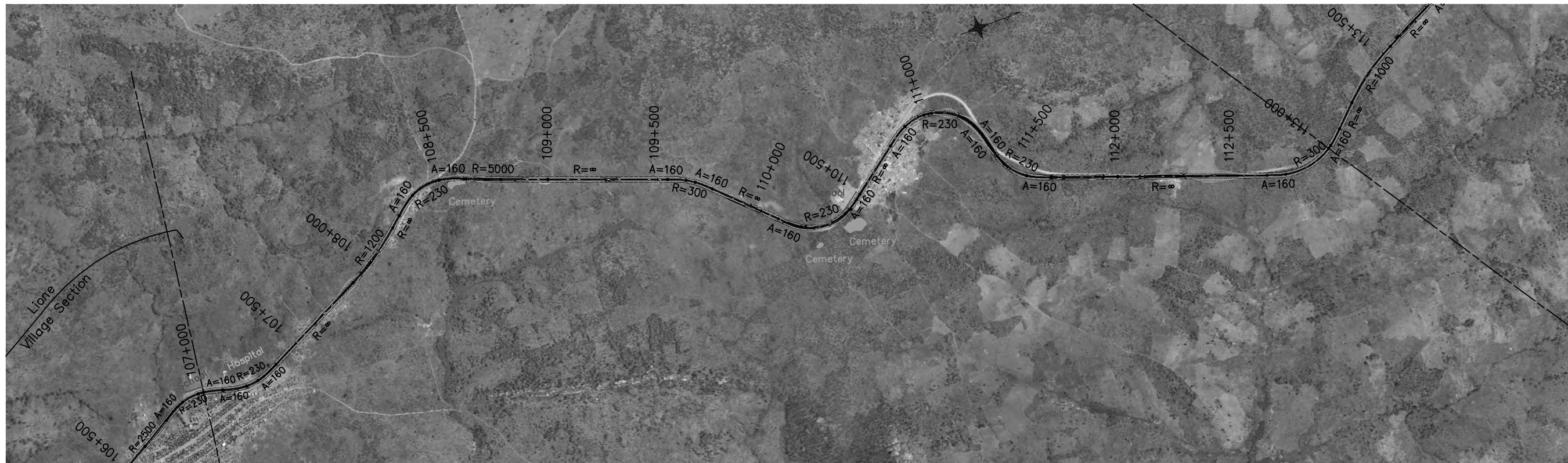
THE PREPARATORY SURVEY ON ROAD IMPROVEMENT PLAN IN NACALA DEVELOPMENT CORRIDOR
 (N13: CUAMBA-MANDIMBA-LICHINGA)
 Eight-Japan Engineering Consultants Inc.
 Oriental Consultants Co., Ltd

DRAWING TITLE: Plan and Profile (17)

PREPARED BY	CHECKED BY	APPROVED BY
NAME		
SIGNATURE		
DATE		

SCALE	SHEET NO.	DRAWING NO.	REV. NO.
1/10,000		18	-





REMARKS:

JICA JAPAN INTERNATIONAL COOPERATION AGENCY

ANE NATIONAL ROAD ADMINISTRATION

THE PREPARATORY SURVEY ON ROAD IMPROVEMENT PLAN IN NACALA DEVELOPMENT CORRIDOR (N13: CUAMBA-MANDIMBA-LICHINGA)

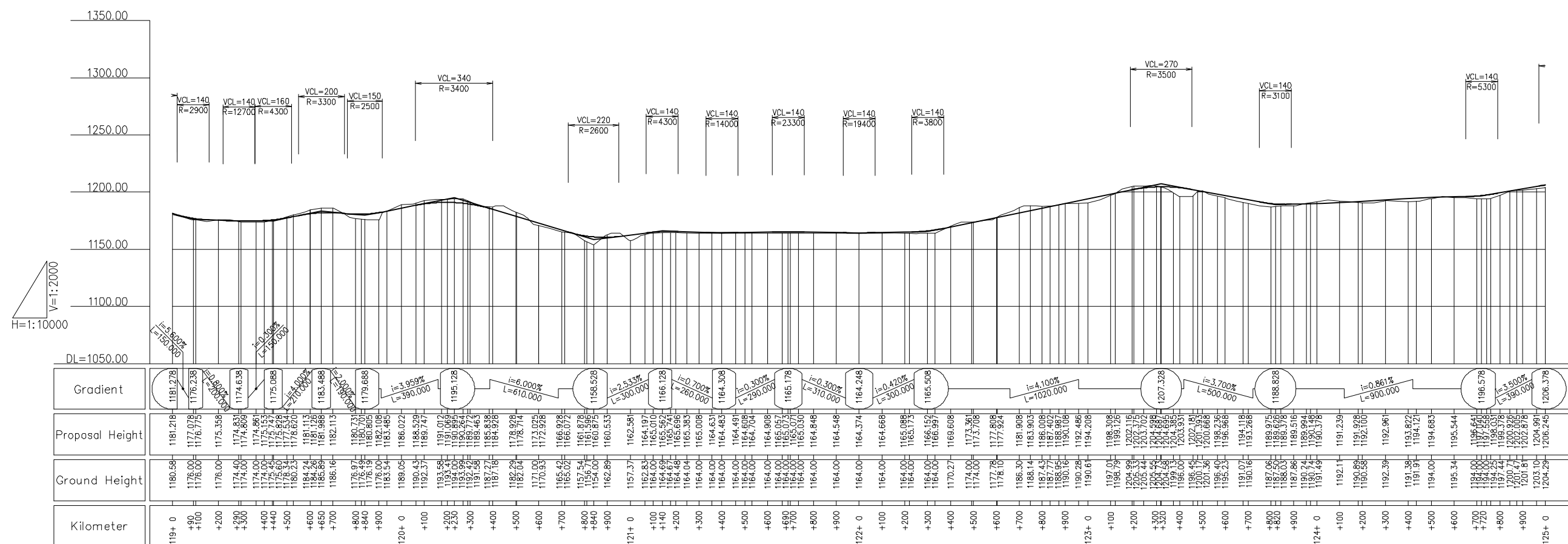
Eight-Japan Engineering Consultants Inc.
Oriental Consultants Co., Ltd

DRAWING TITLE

Plan and Profile (19)

	PREPARED BY	CHECKED BY	APPROVED BY
NAME			
SIGNATURE			
DATE			

SCALE	SHEET NO.	DRAWING NO.	REV. NO.
1/10,000		20	-



JAPAN INTERNATIONAL COOPERATION AGENCY
 NATIONAL ROAD ADMINISTRATION

REMARKS:

NAME	PREPARED BY	CHECKED BY	APPROVED BY
SIGNATURE			
DATE			

THE PREPARATORY SURVEY ON ROAD IMPROVEMENT PLAN IN NACALA DEVELOPMENT CORRIDOR
 (N13: CUAMBA-MANDIMBA-LICHINGA)
 Eight-Japan Engineering Consultants Inc.
 Oriental Consultants Co., Ltd

DRAWING TITLE: Plan and Profile (21)

SCALE	SHEET NO.	DRAWING NO.	REV. NO.
1/10,000		22	-